
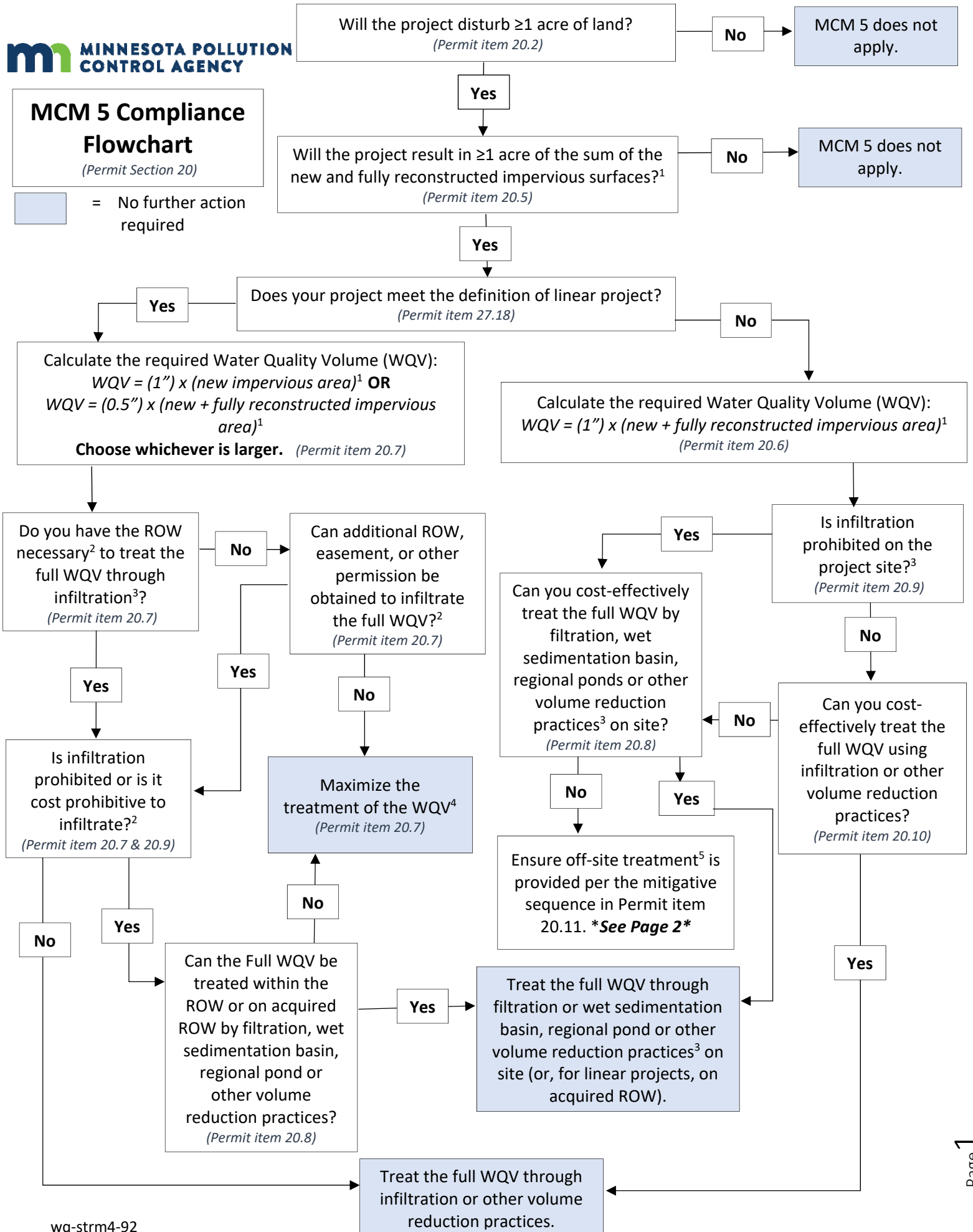


MCM 5 Compliance Flowchart

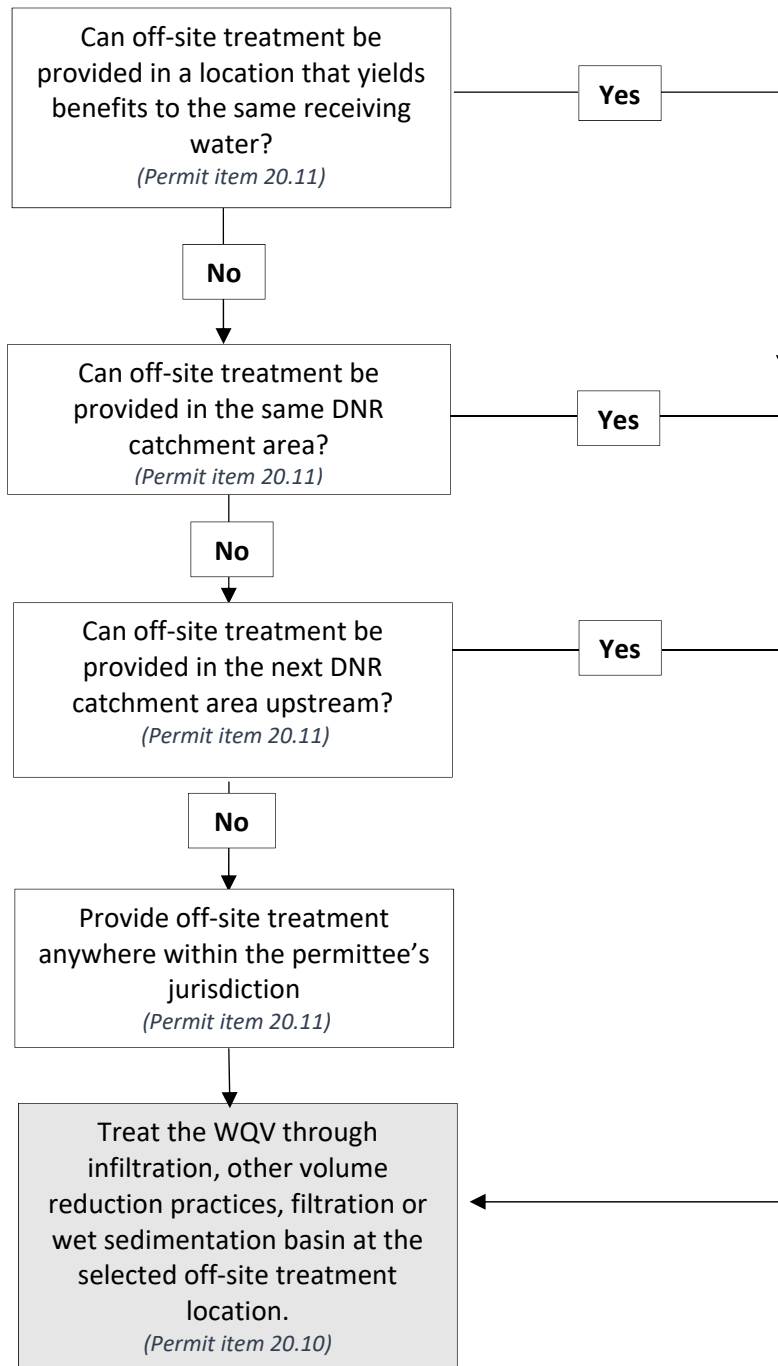
(Permit Section 20)

 = No further action required



MCM 5 Off-Site Treatment Sequence

For non-linear projects, if the WQV cannot be cost-effectively treated on-site, use this flow chart to choose an off-site treatment location⁴



1. Any portions of the impervious surfaces that are already treated by a system that meets the MS4 General Permit's requirements does not need to be included in the calculation.
2. For linear projects, the site conditions discussed in this flow chart may be variable throughout the length of the project. Therefore, it may be necessary to analyze the project in segments.
3. Volume reduction practices include many types of stormwater treatment including infiltration. The prohibitions in the MS4 General Permit (item 20.9) only apply to designed infiltration systems. Other volume reduction practices such as stormwater capture and re-use or a green roof can still be utilized.
4. For linear projects where the full WQV is not treated due to site constraints, cost limitations or lack of right-of-way, off-site mitigation is not required.
5. Off-site treatment can be accomplished using infiltration, other volume reduction practices, filtration or wet sedimentation basins.