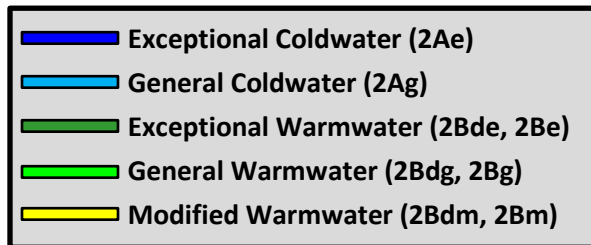
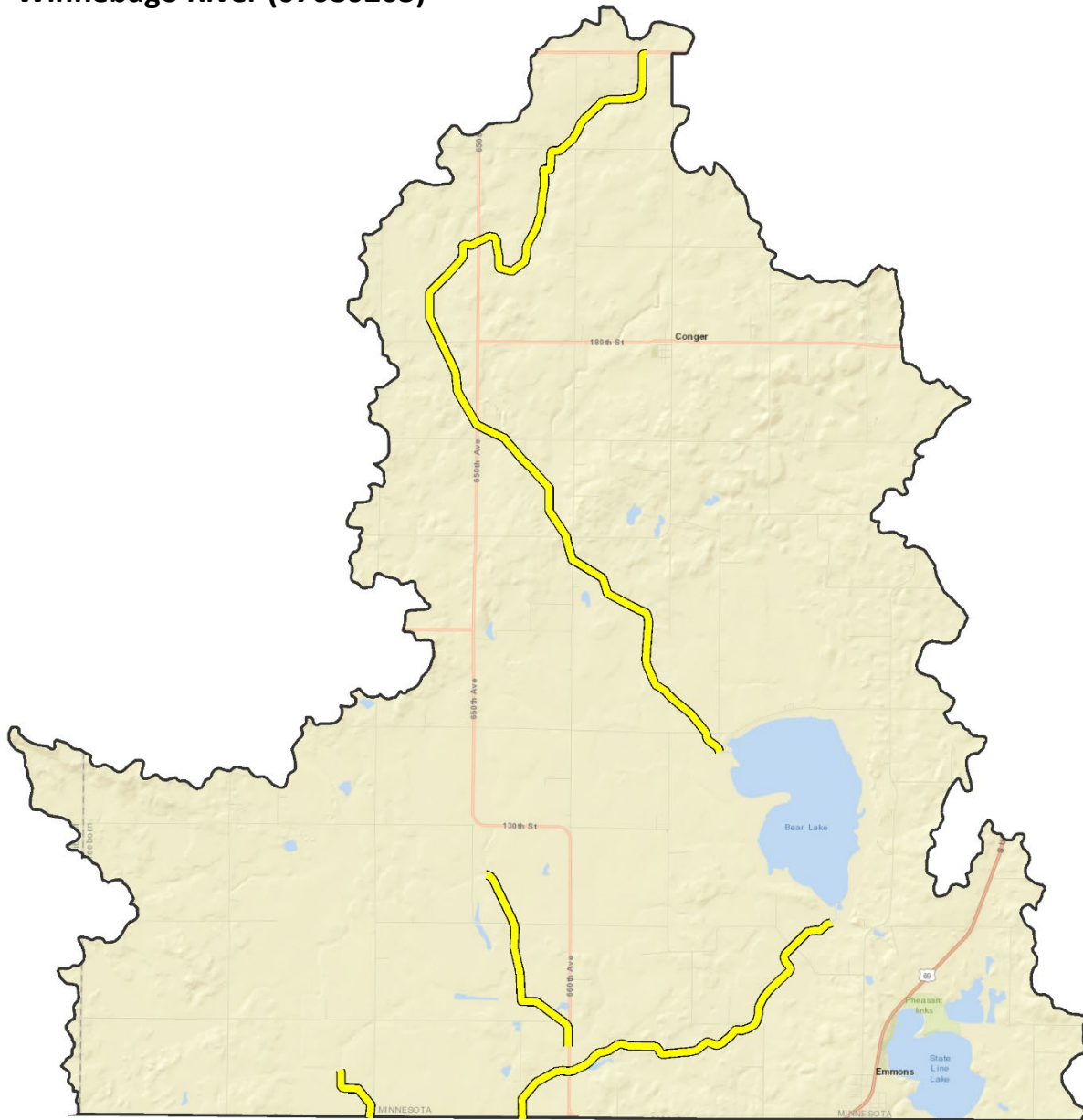


Appendix H: Maps of designated use changes - Cedar-Des Moines Rivers Basin

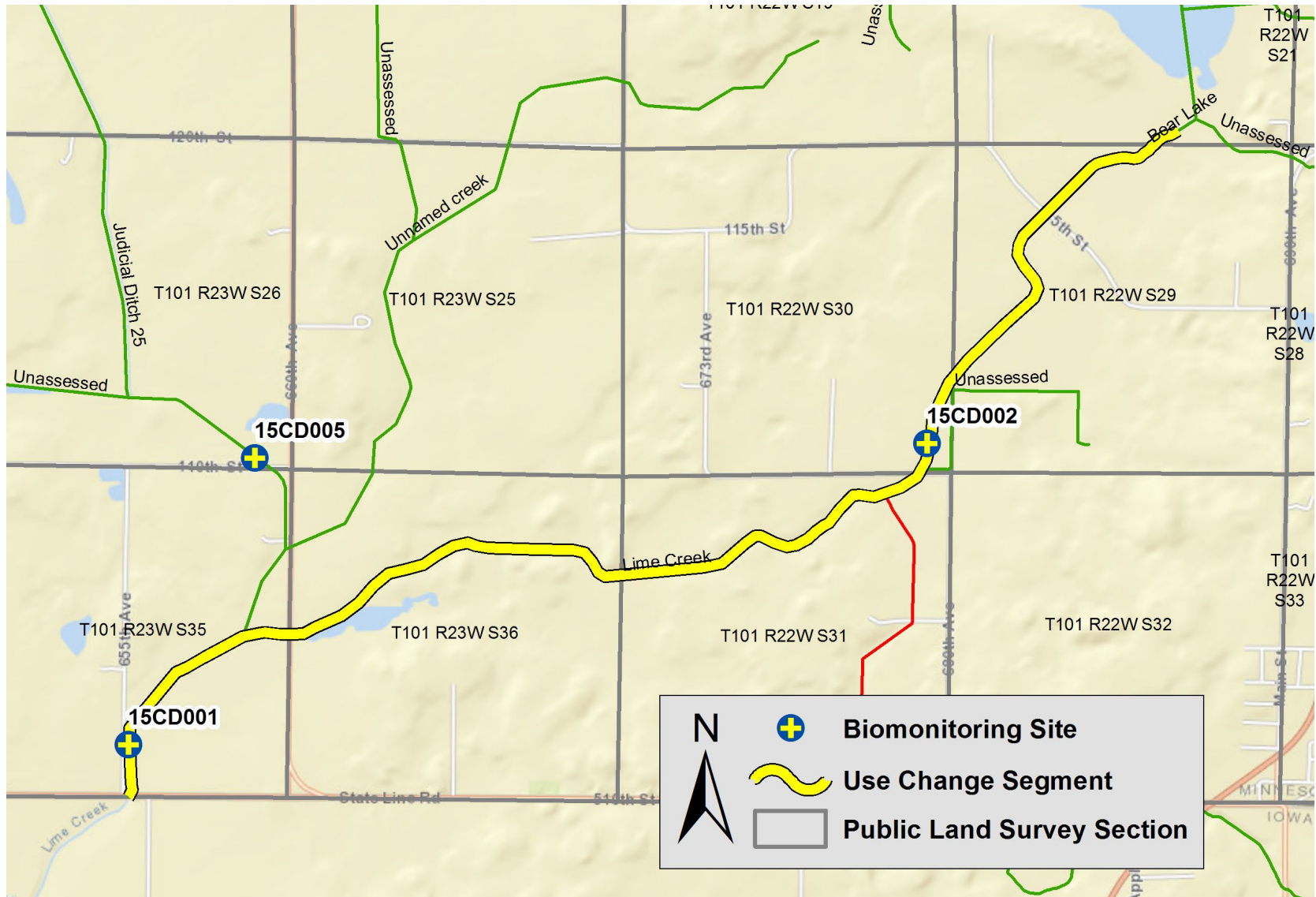
Watersheds

1. Winnebago River (07080203)
2. Des Moines River - Headwaters (07100001)
3. Des Moines River - Lower (07100002)
4. Des Moines River – East Fork (07100003)

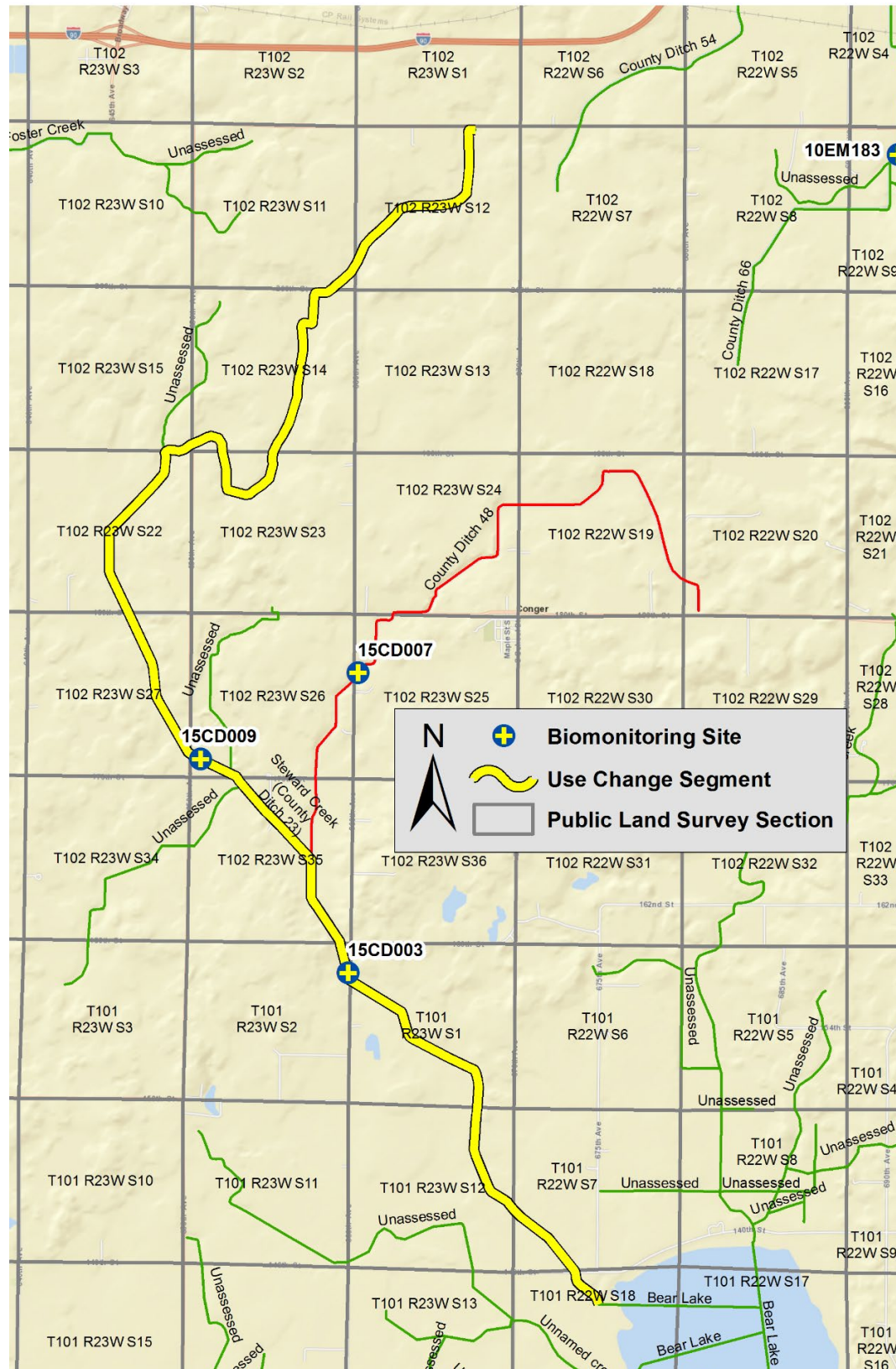
Winnebago River (07080203)



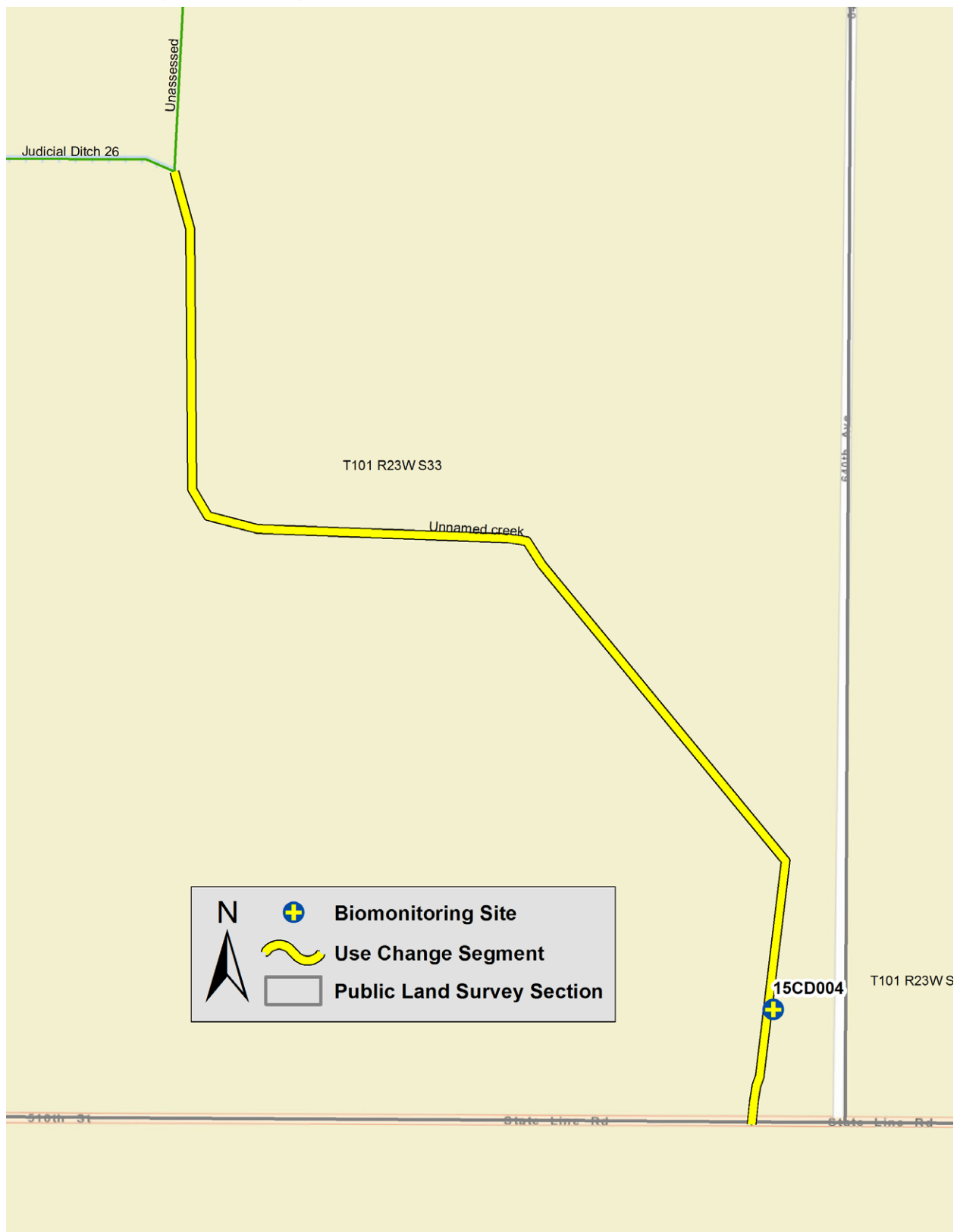
Lime Creek (07080203-501)



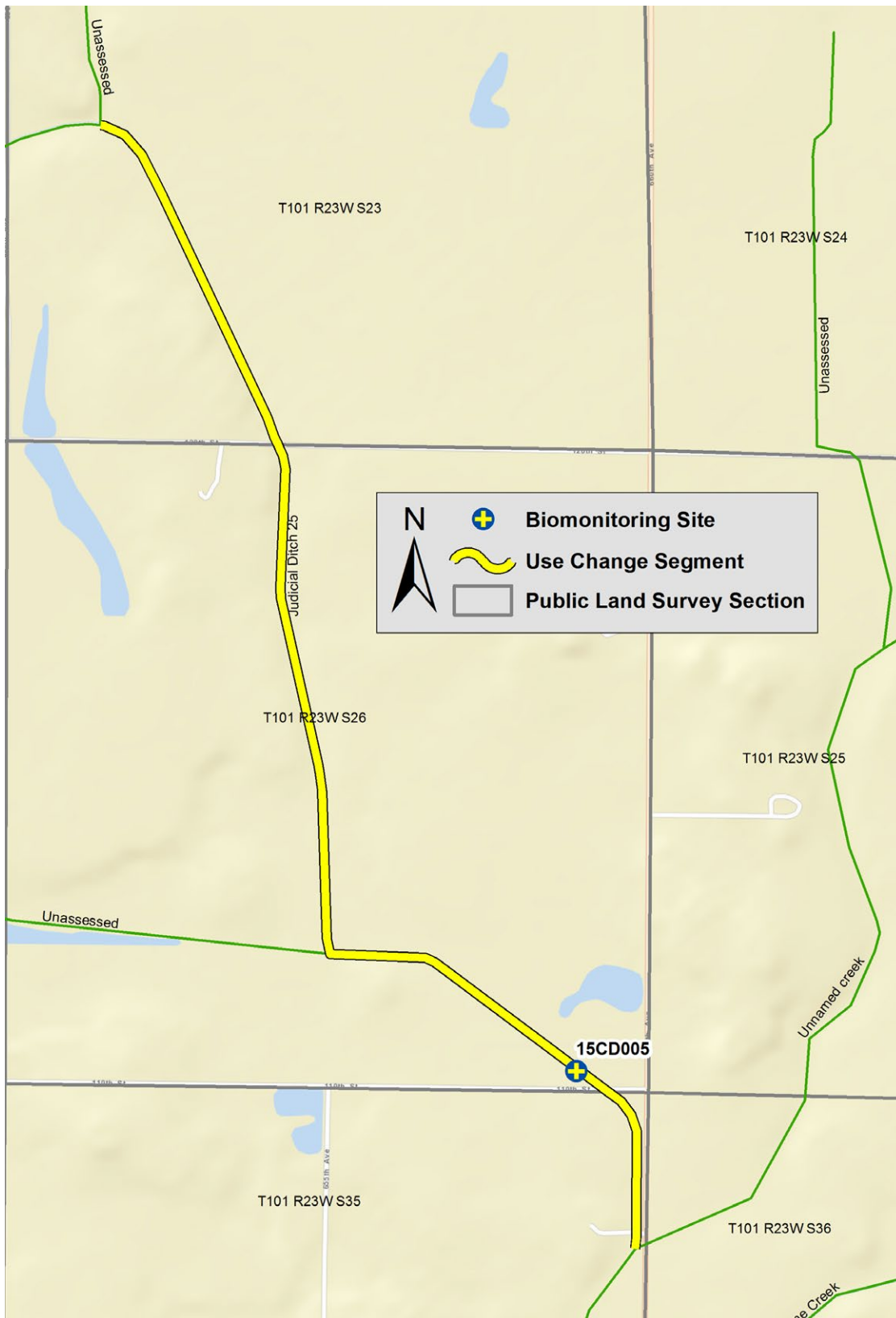
Steward Creek (County Ditch 23) (07080203-504)



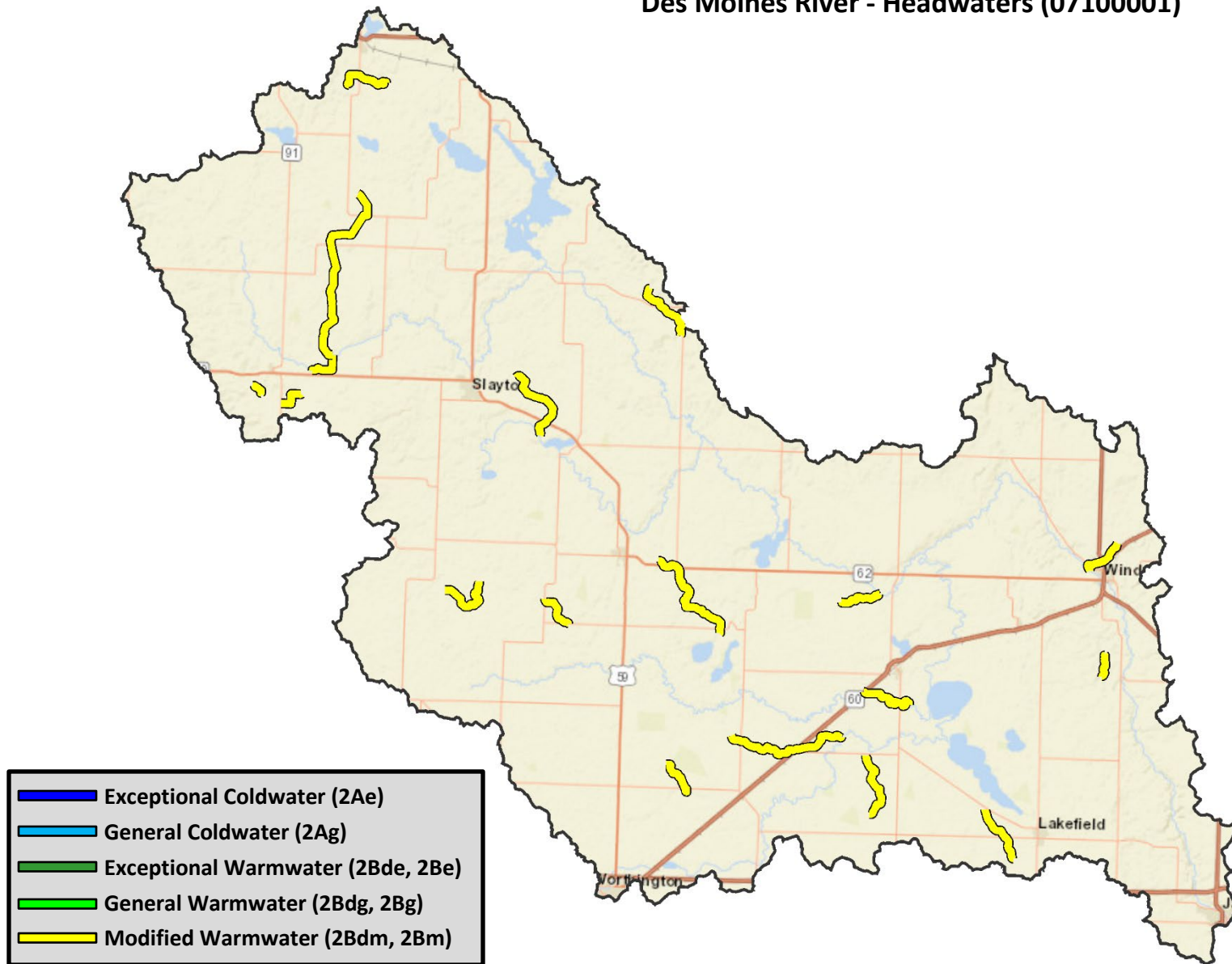
Unnamed creek (07080203-509)



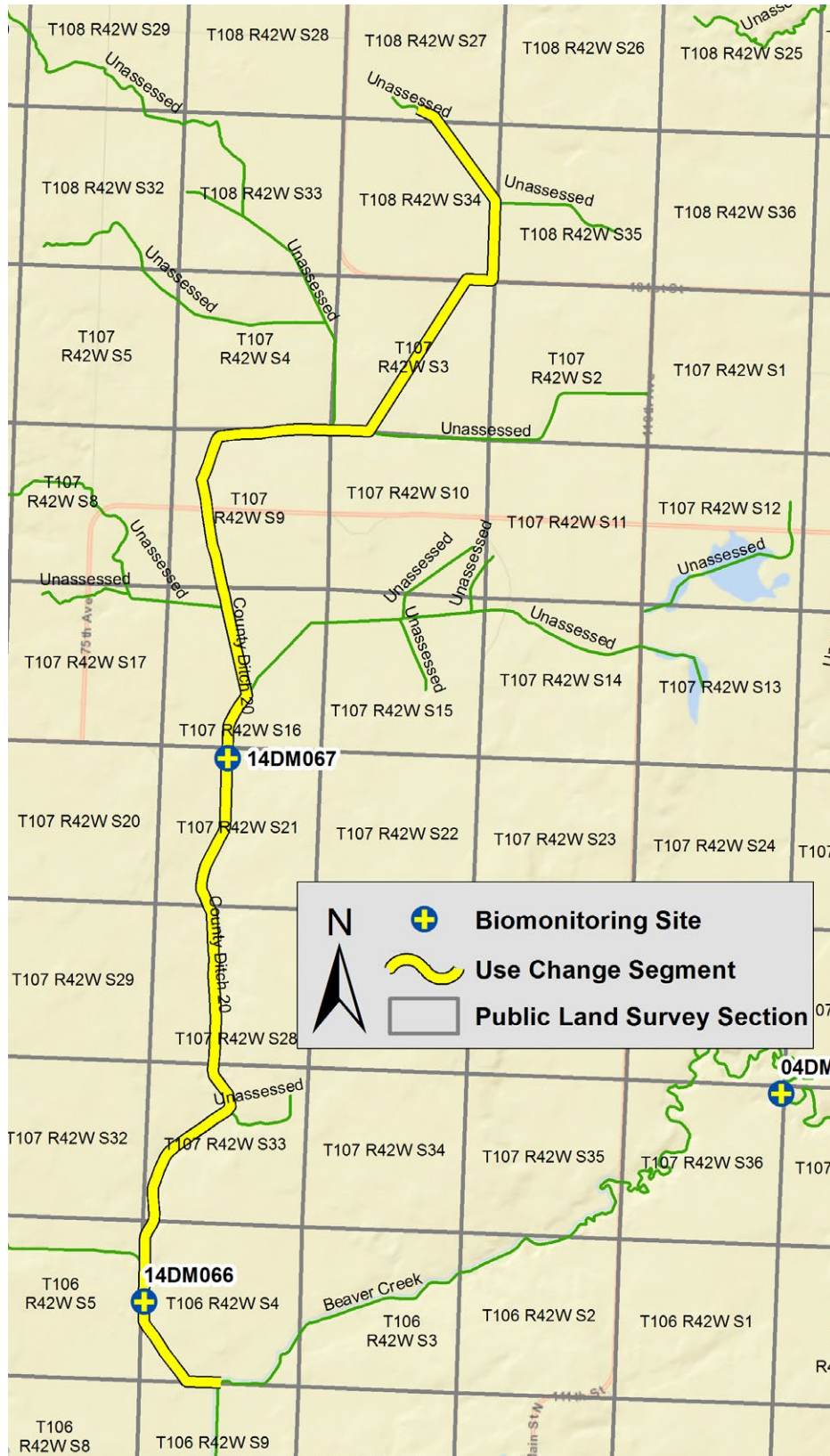
Judicial Ditch 25 (07080203-515)



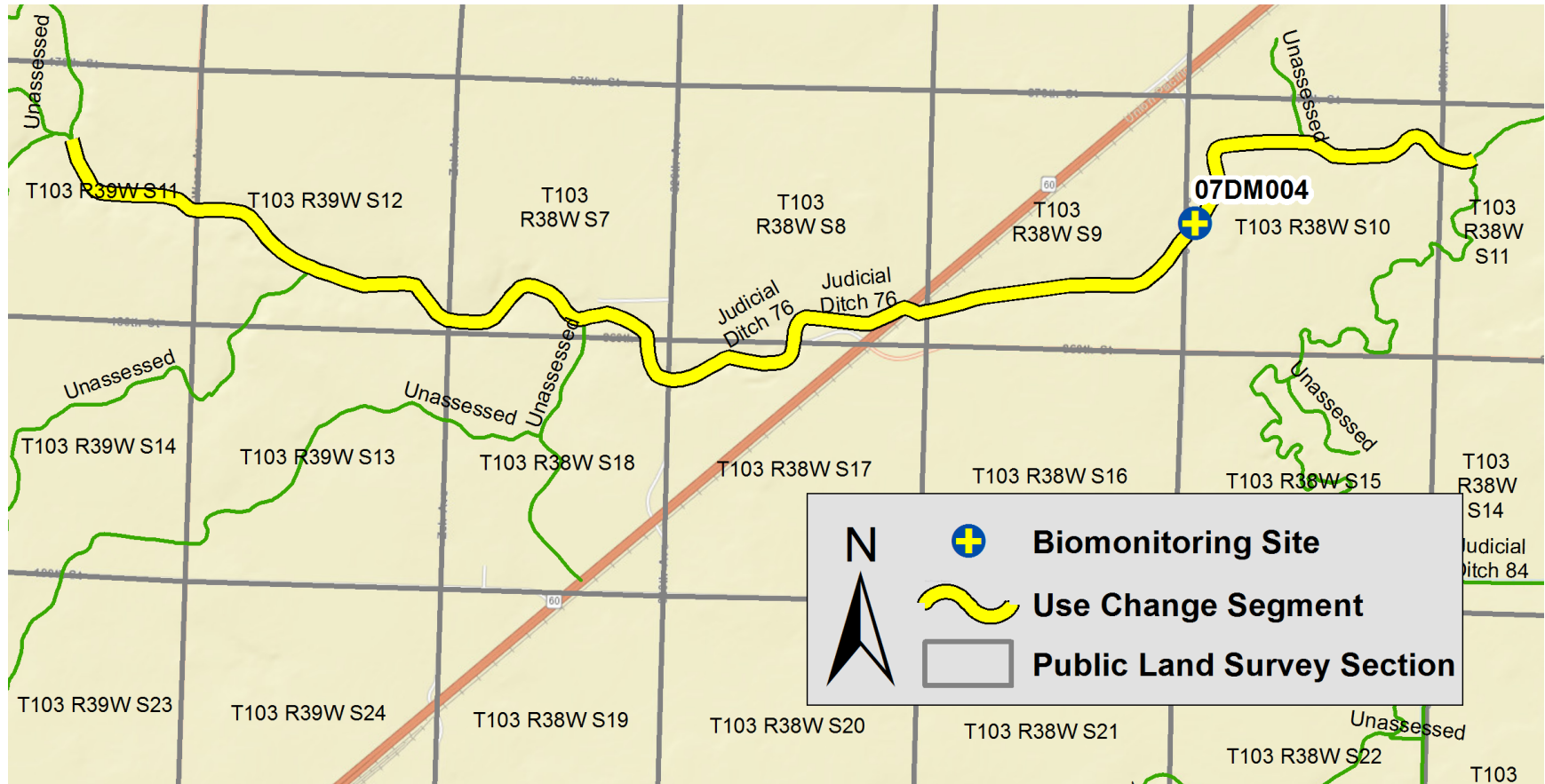
Des Moines River - Headwaters (07100001)



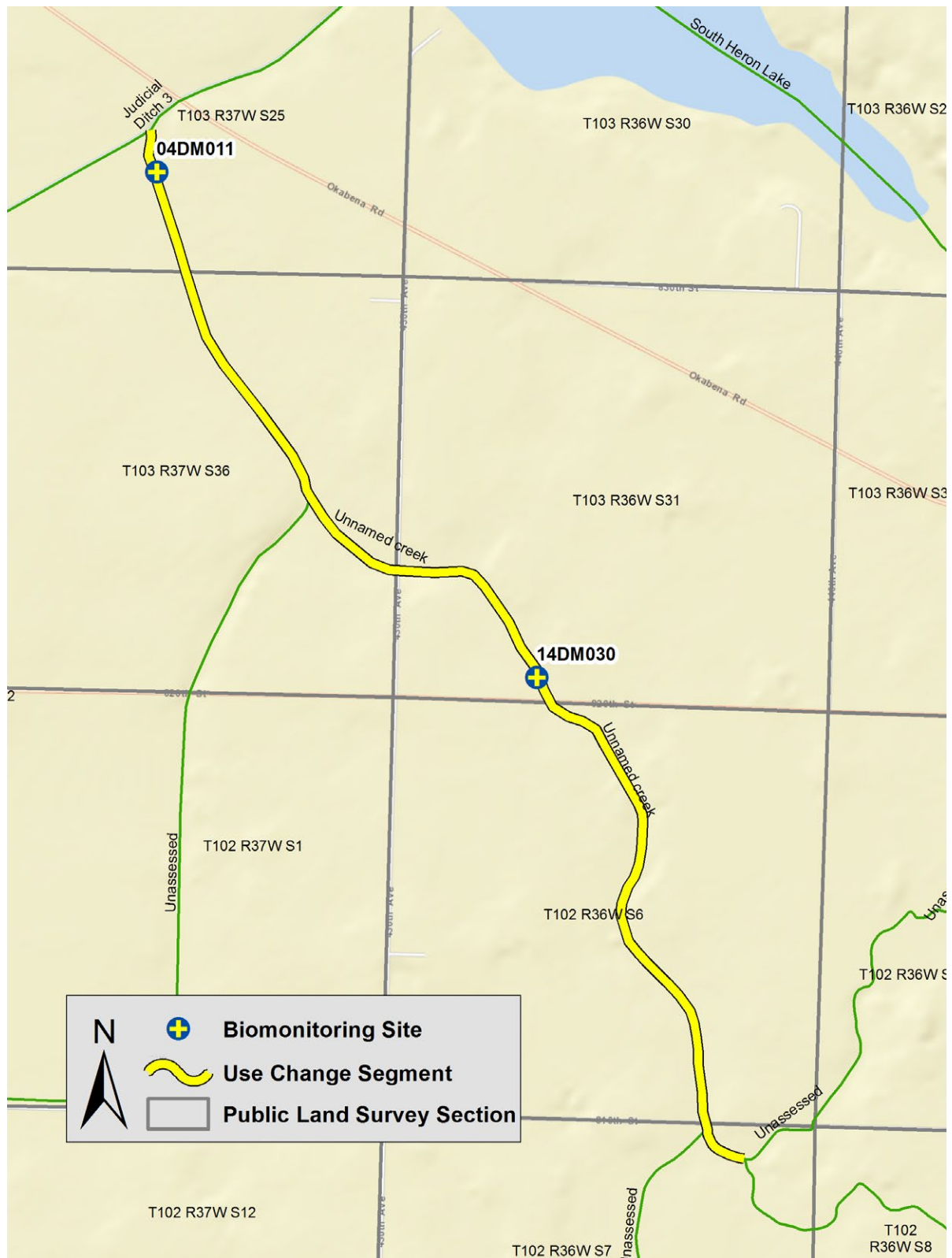
County Ditch 20 (07100001-504)



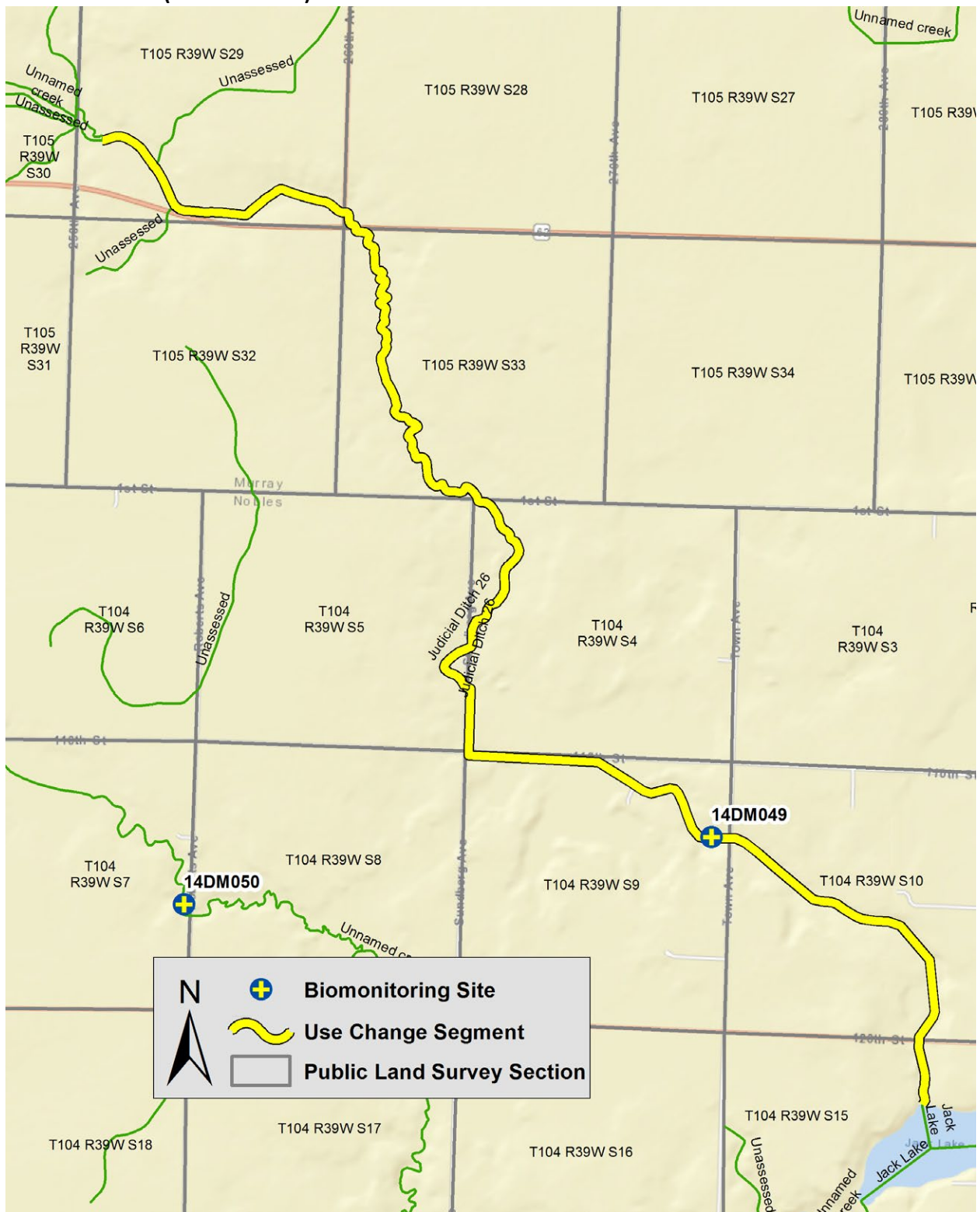
Judicial Ditch 76 (07100001-515)



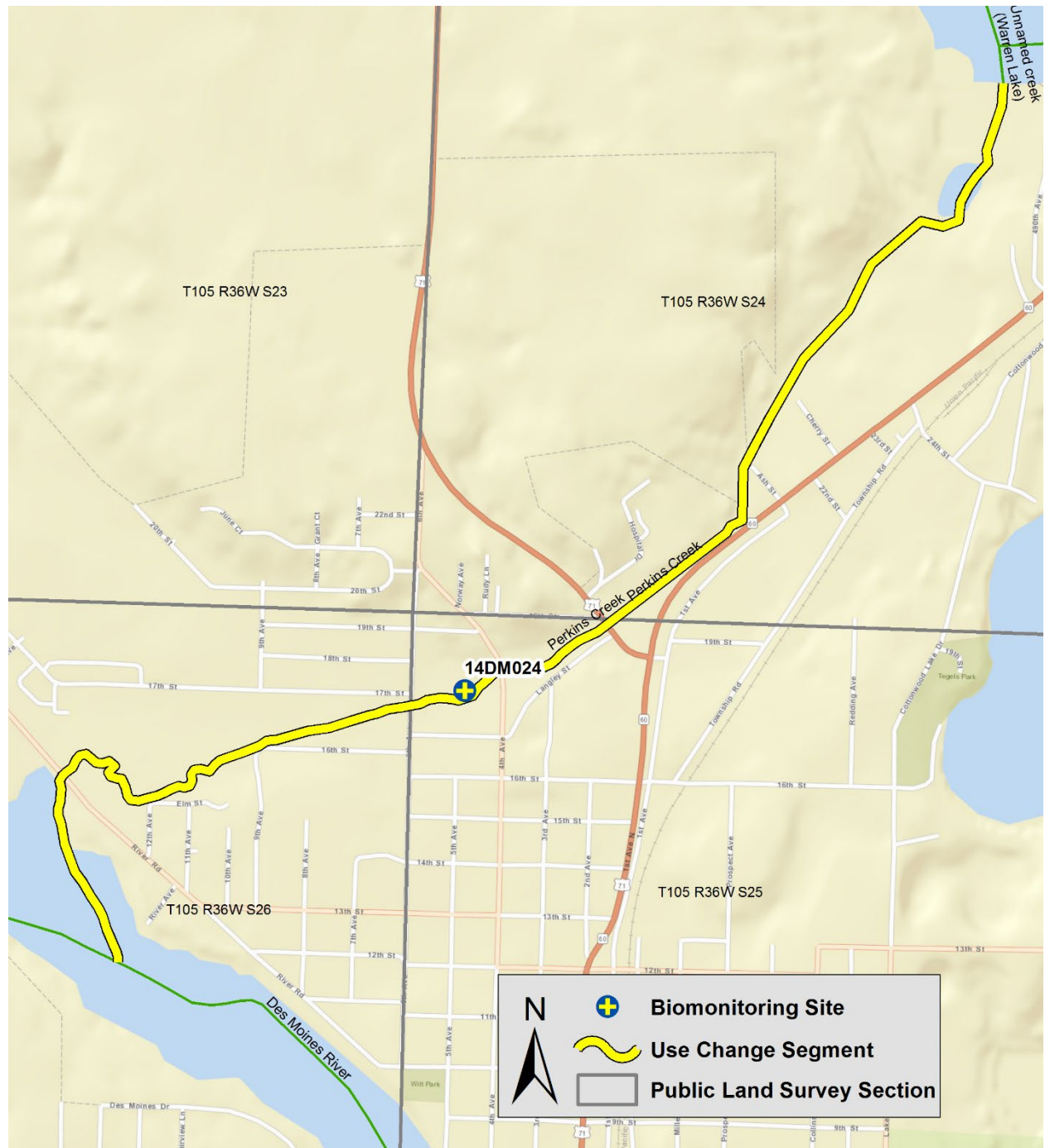
Unnamed creek (07100001-518)



Judicial Ditch 26 (07100001-523)



Perkins Creek (07100001-544)



T106 R42W S18

T106 R42W S17

T106 R42W S20

T106 R43W S24

T106 R42W S19

14DM101

Judicial Ditch 14

Unnamed ditch

Unassessed

N

Biomonitoring Site

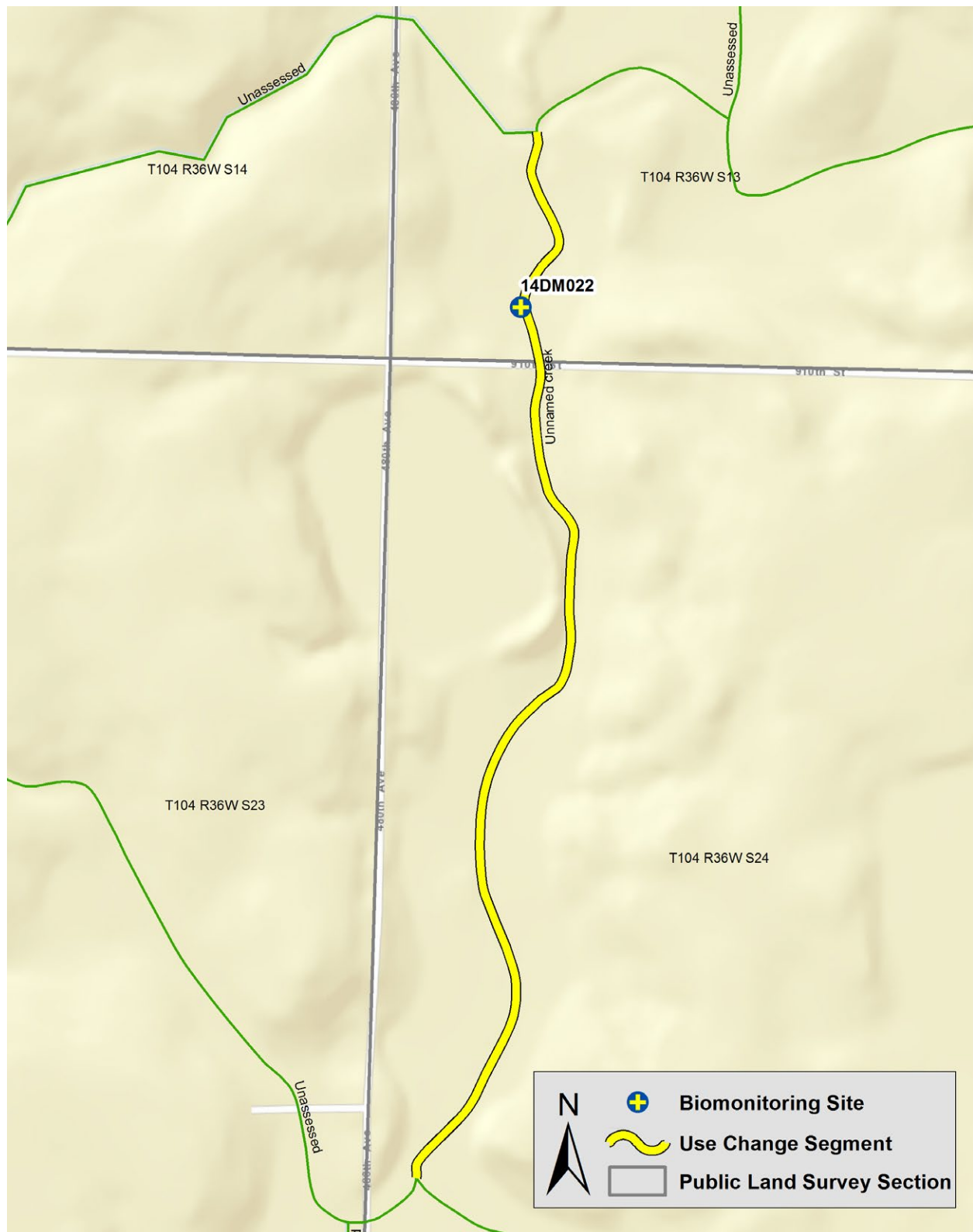
Use Change Segment

Public Land Survey Section

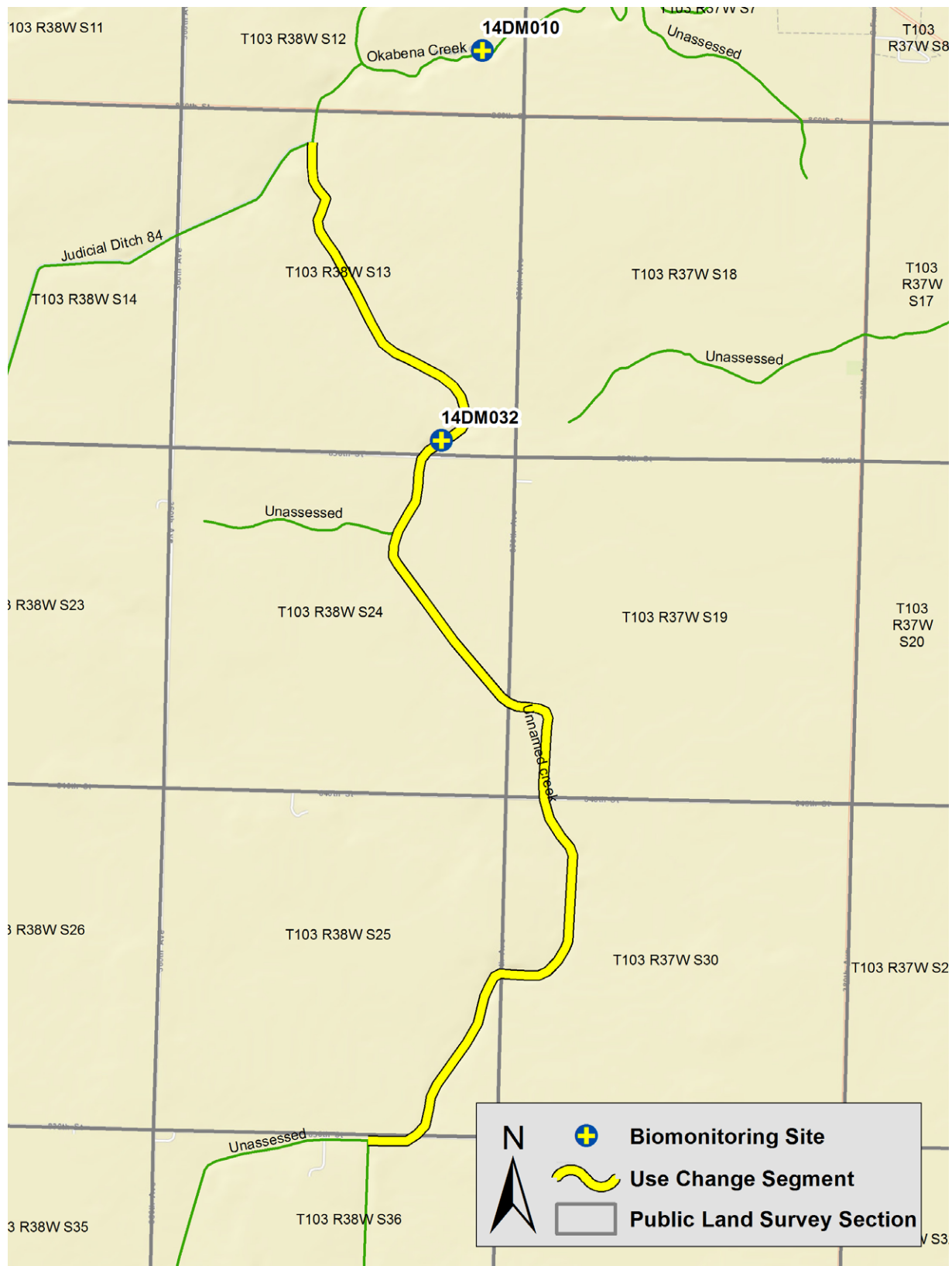
Unnamed ditch (07100001-594)



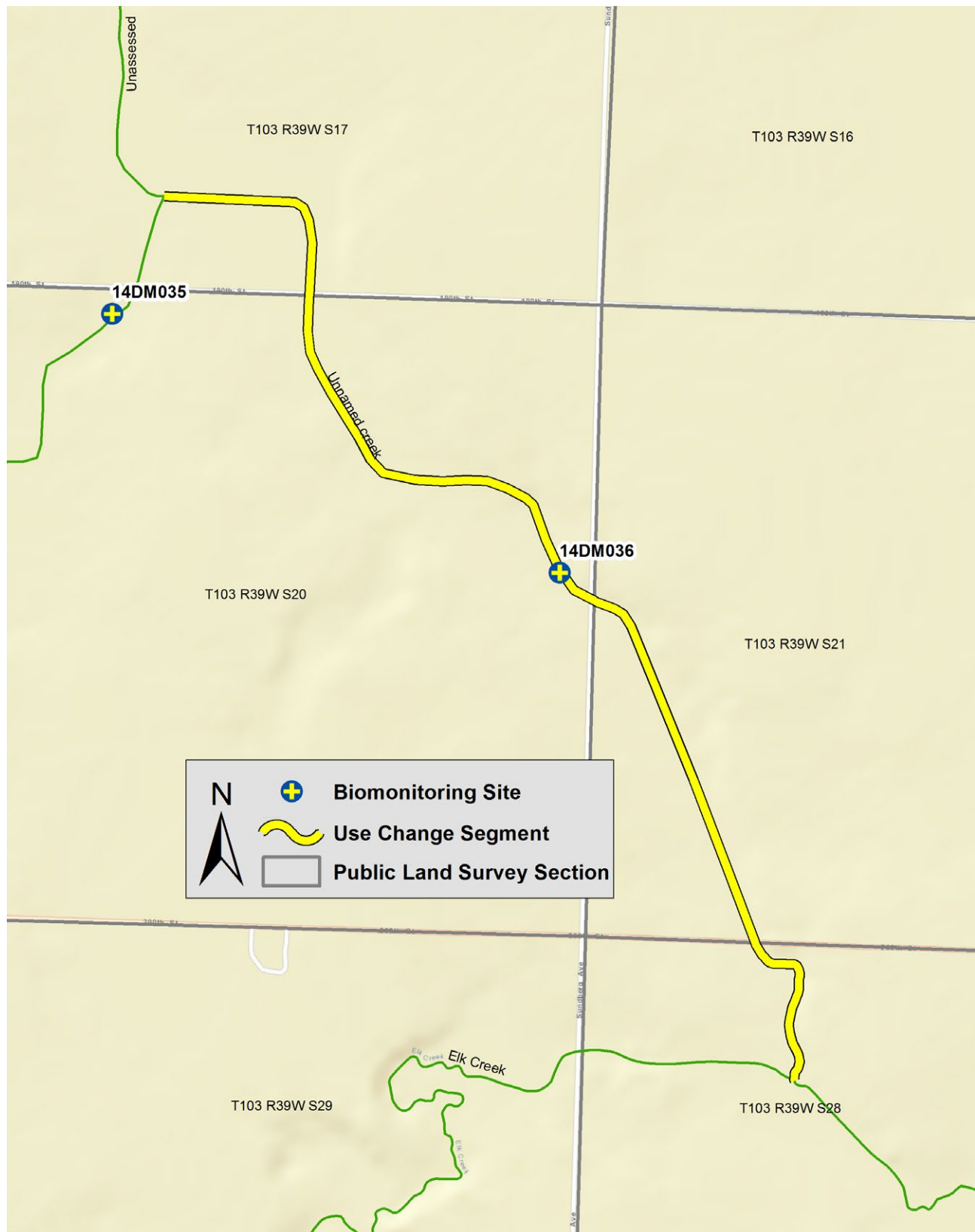
Unnamed creek (07100001-608)



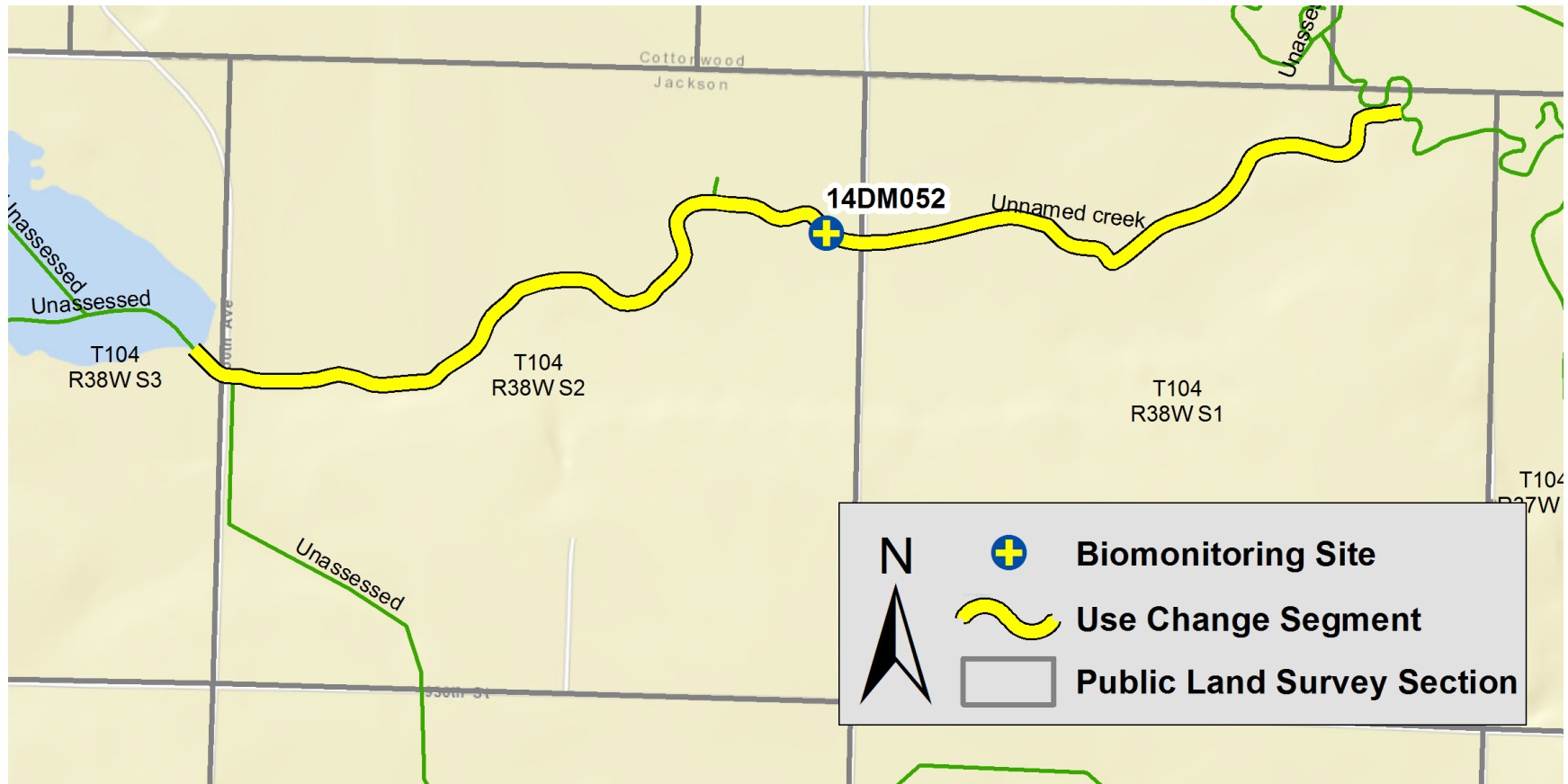
Unnamed creek (07100001-614)



Unnamed creek (07100001-615)



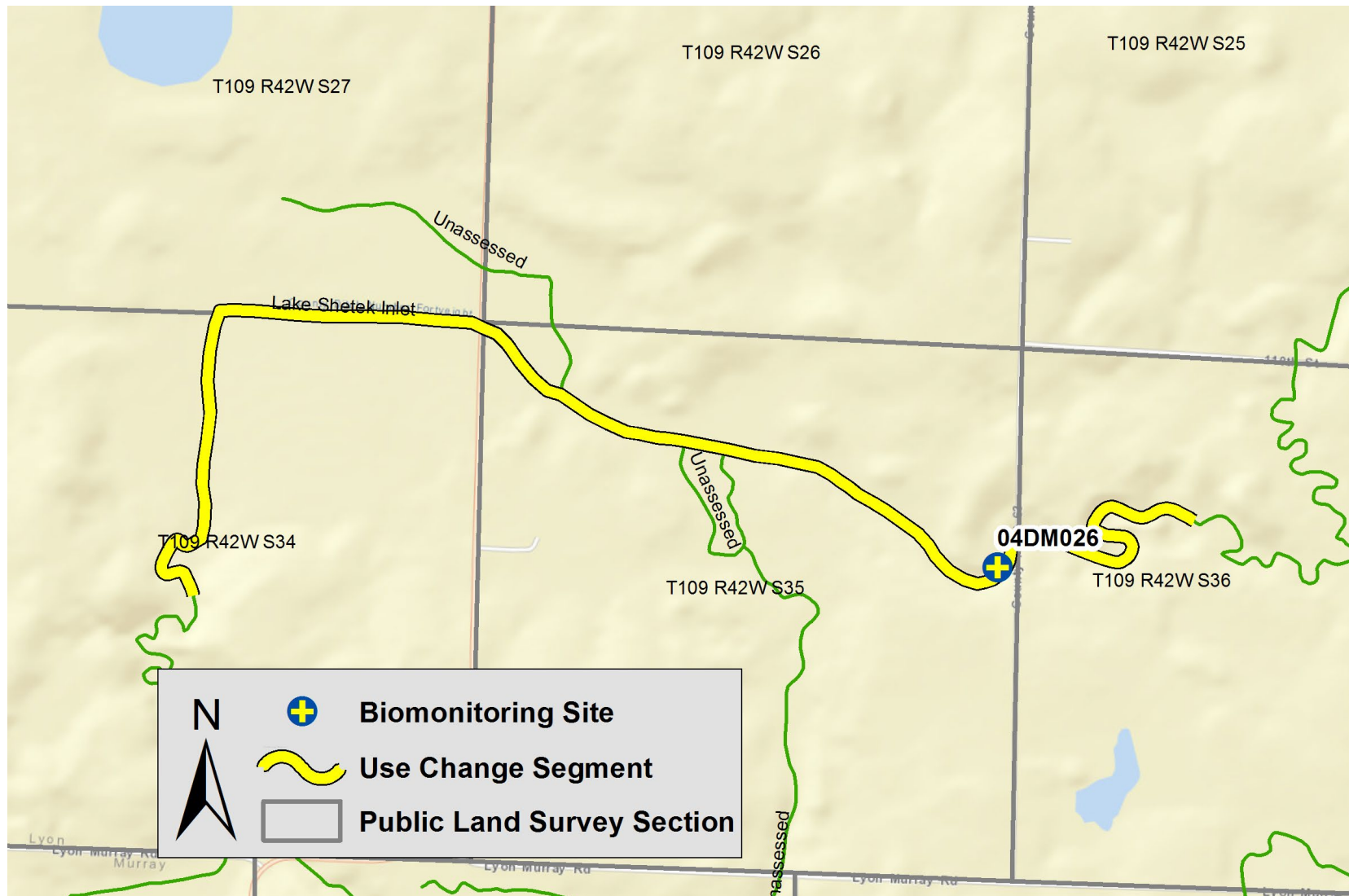
Unnamed creek (07100001-621)



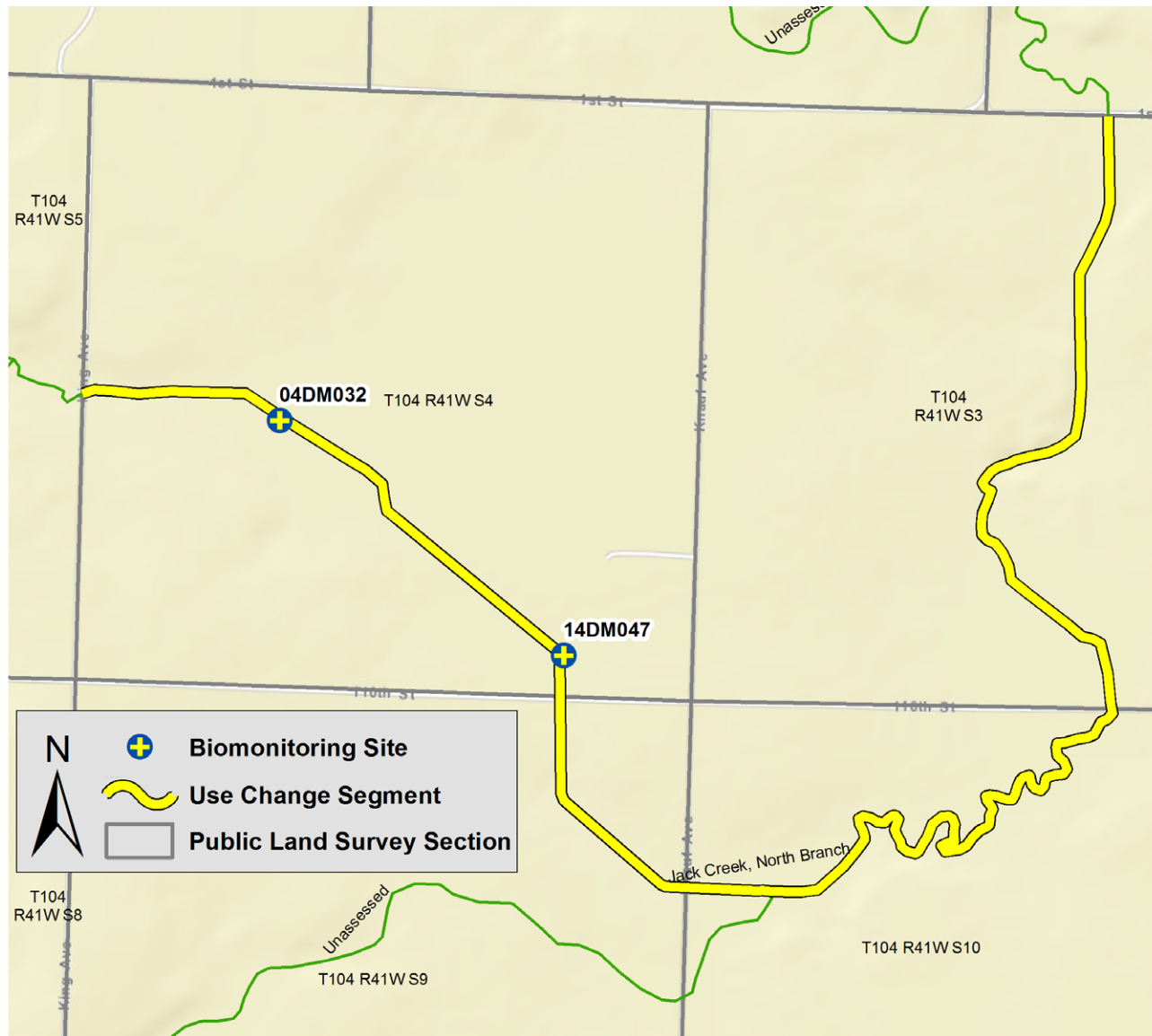
Unnamed creek (07100001-624)



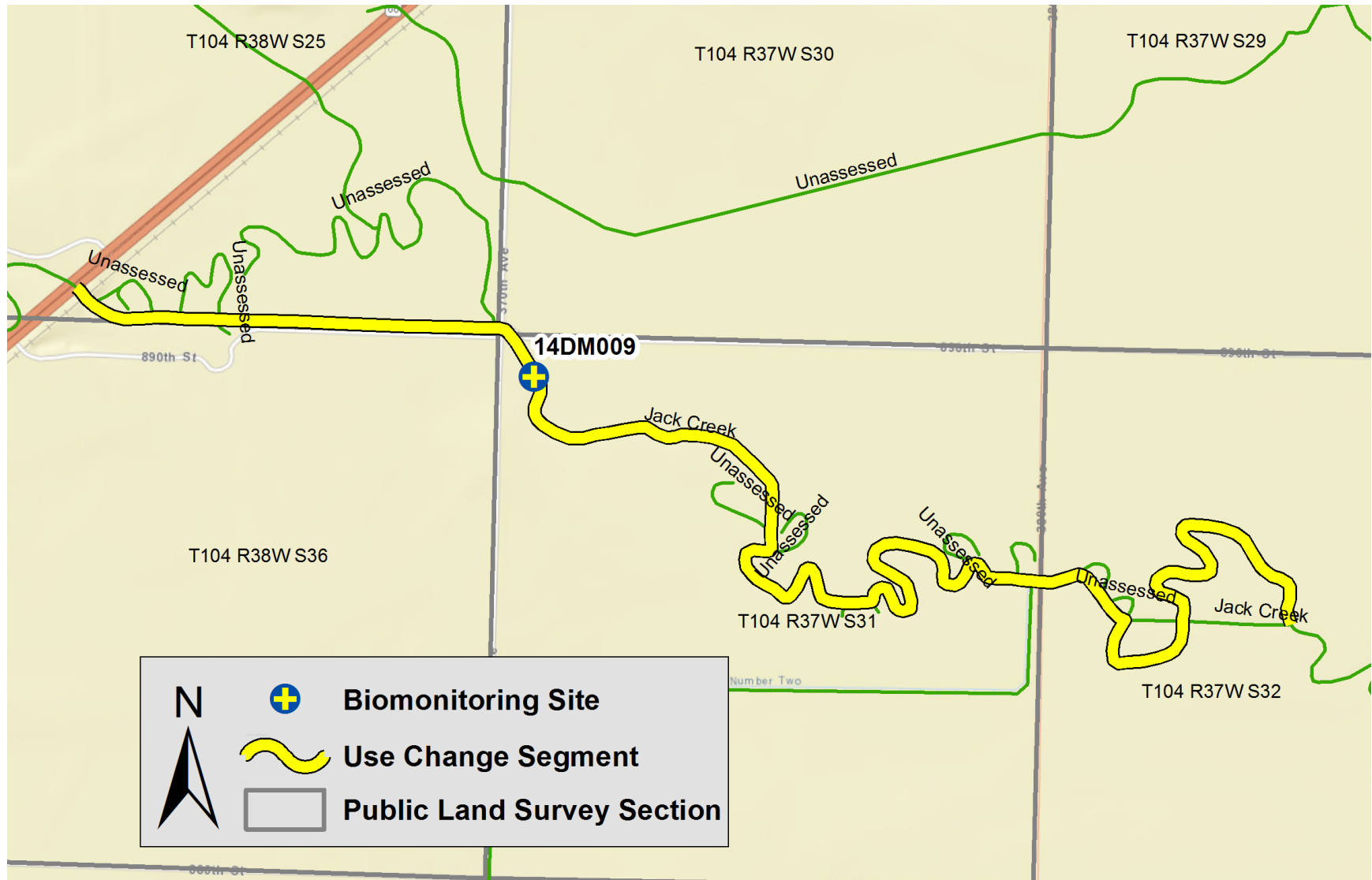
Lake Shetek Inlet (07100001-642)



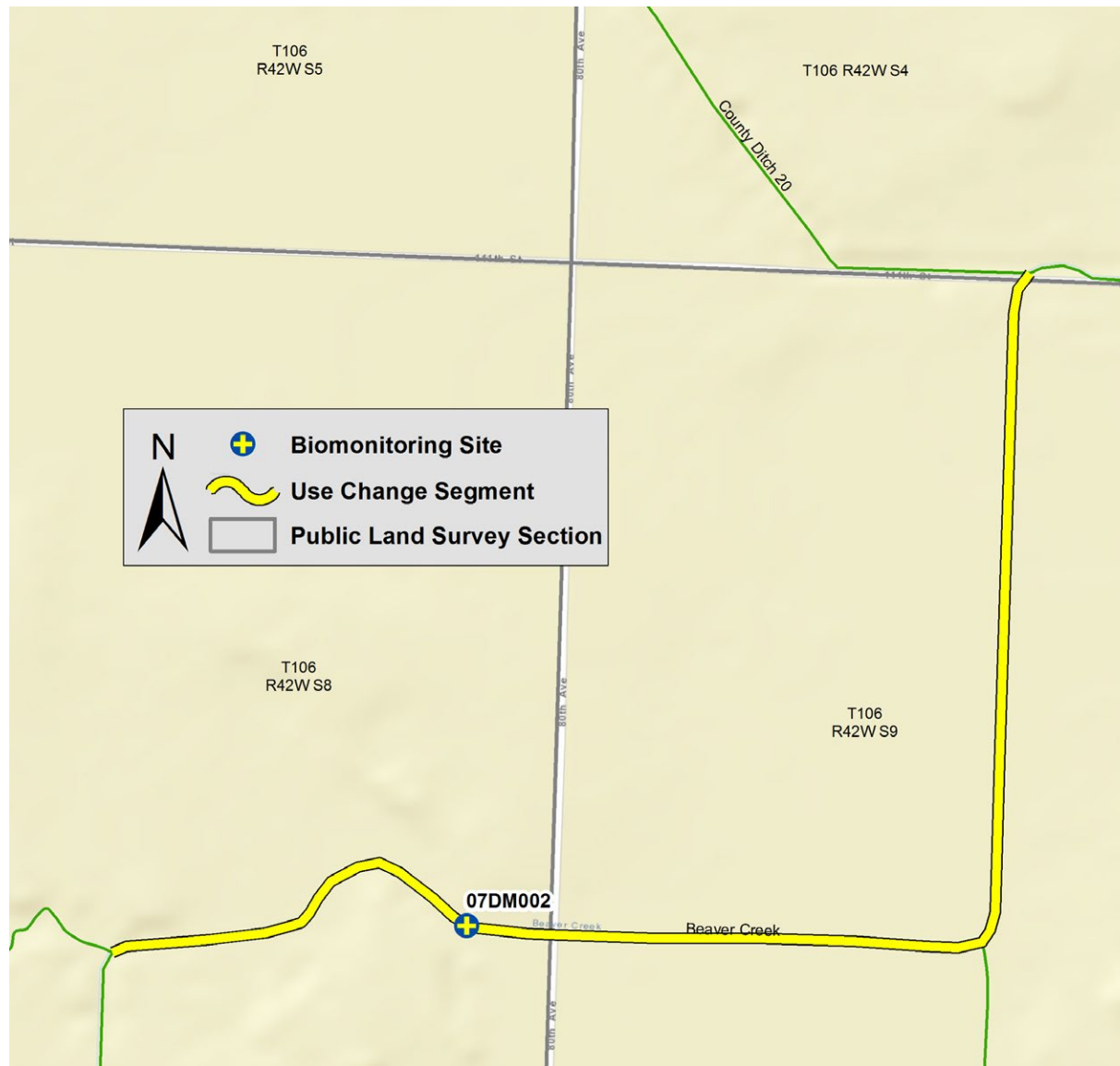
Jack Creek, North Branch (07100001-649)



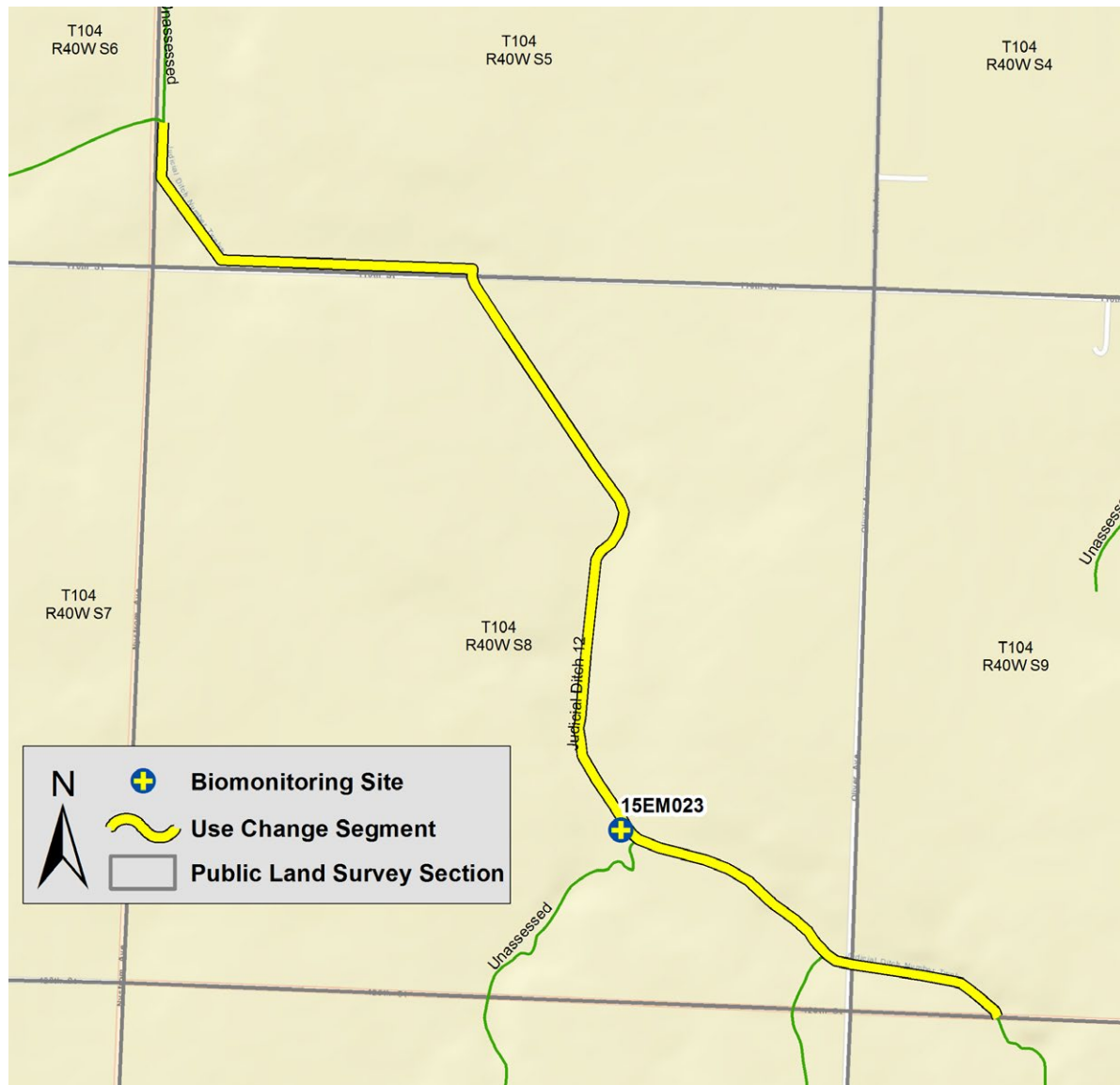
Jack Creek (07100001-658)



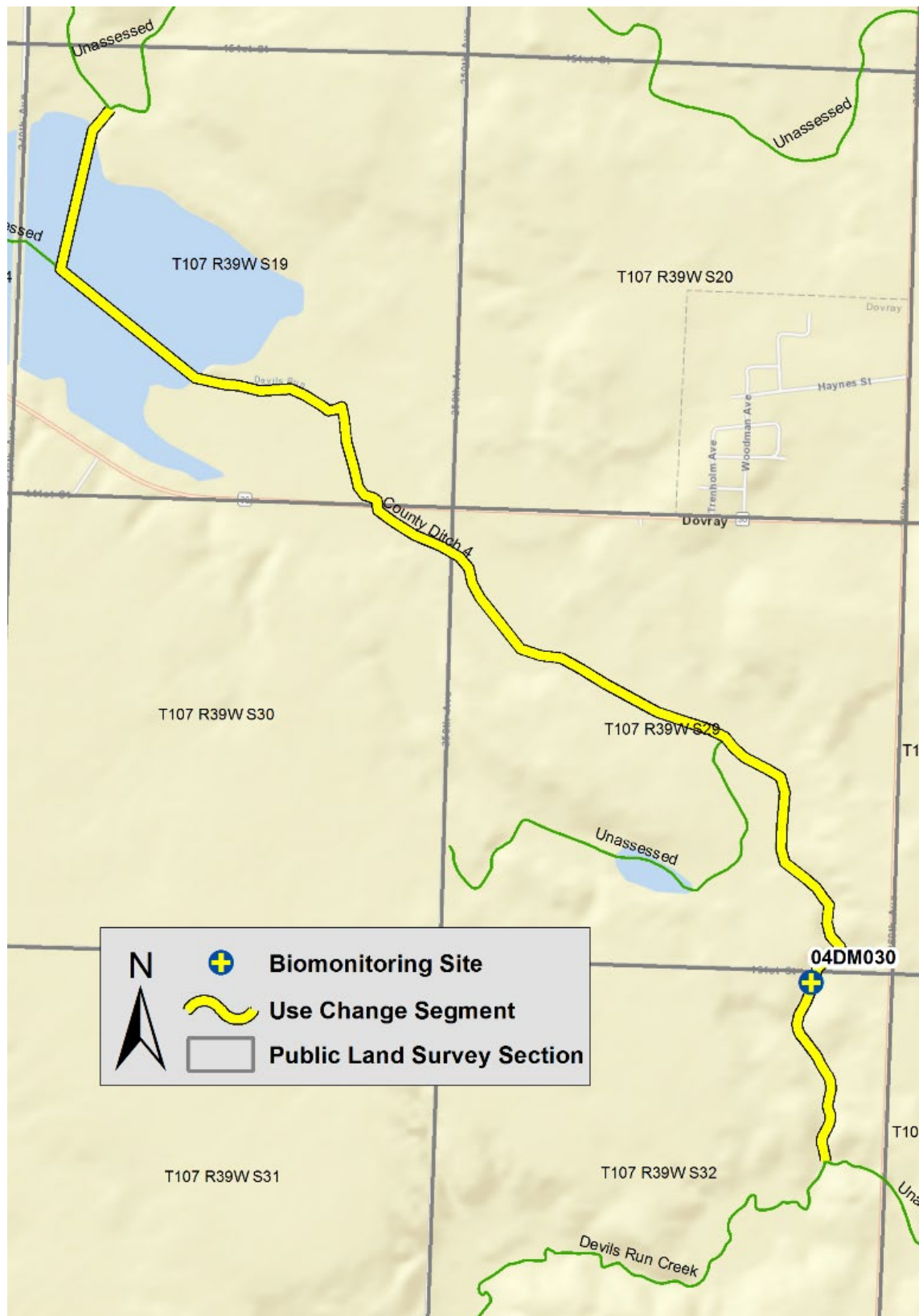
Beaver Creek (07100001-664)



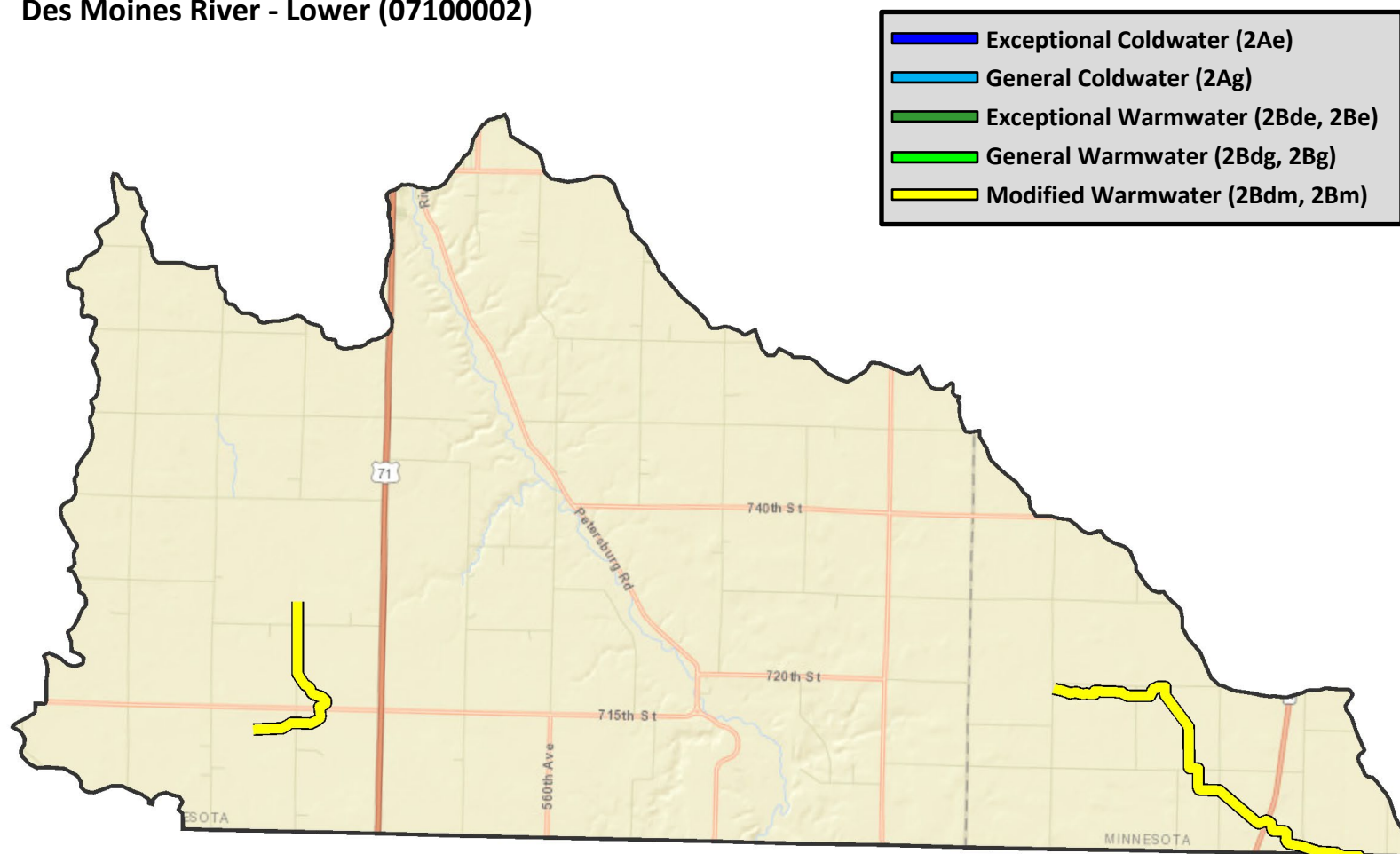
Judicial Ditch 12 (07100001-665)



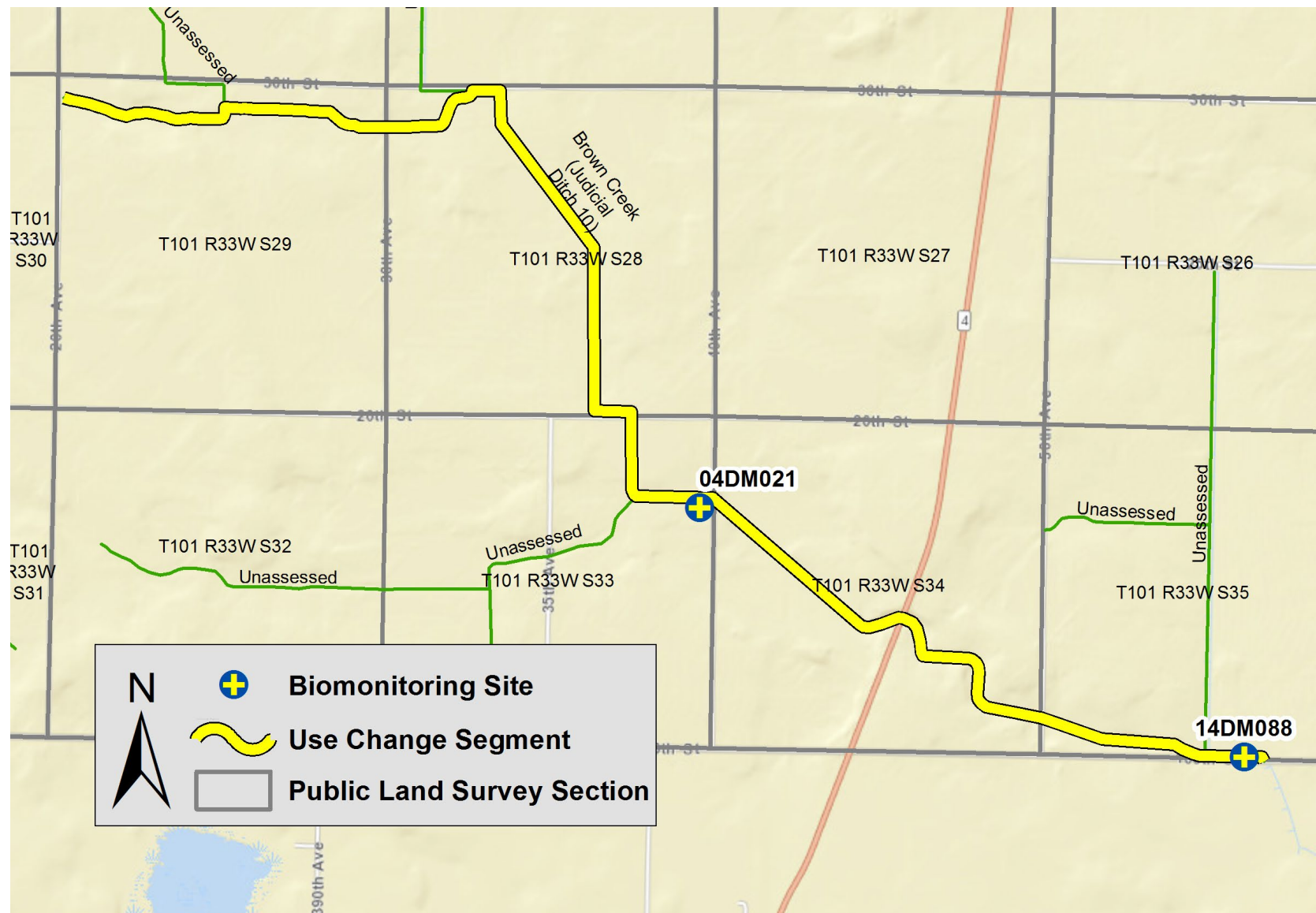
County Ditch 4 (07100001-667)



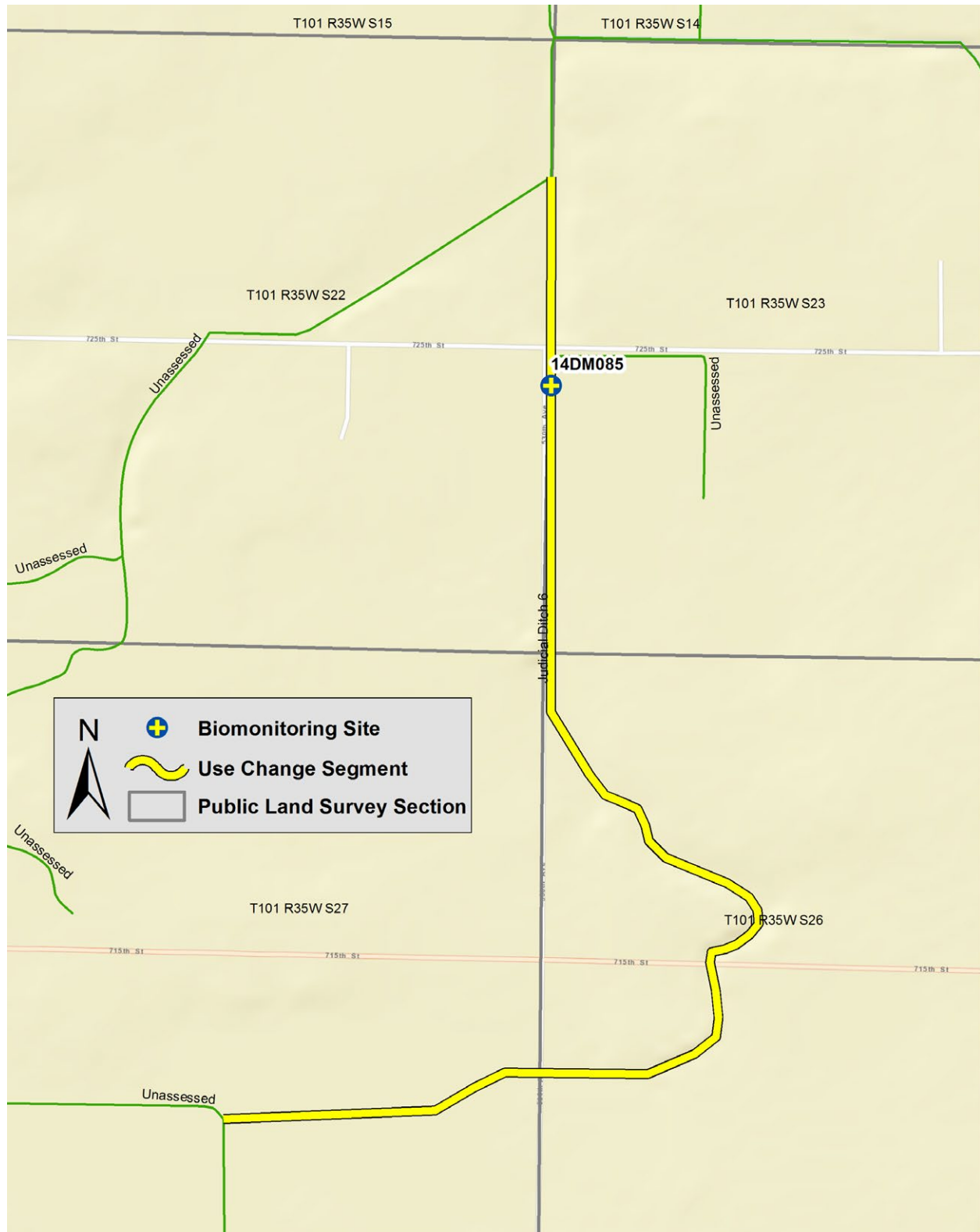
Des Moines River - Lower (07100002)



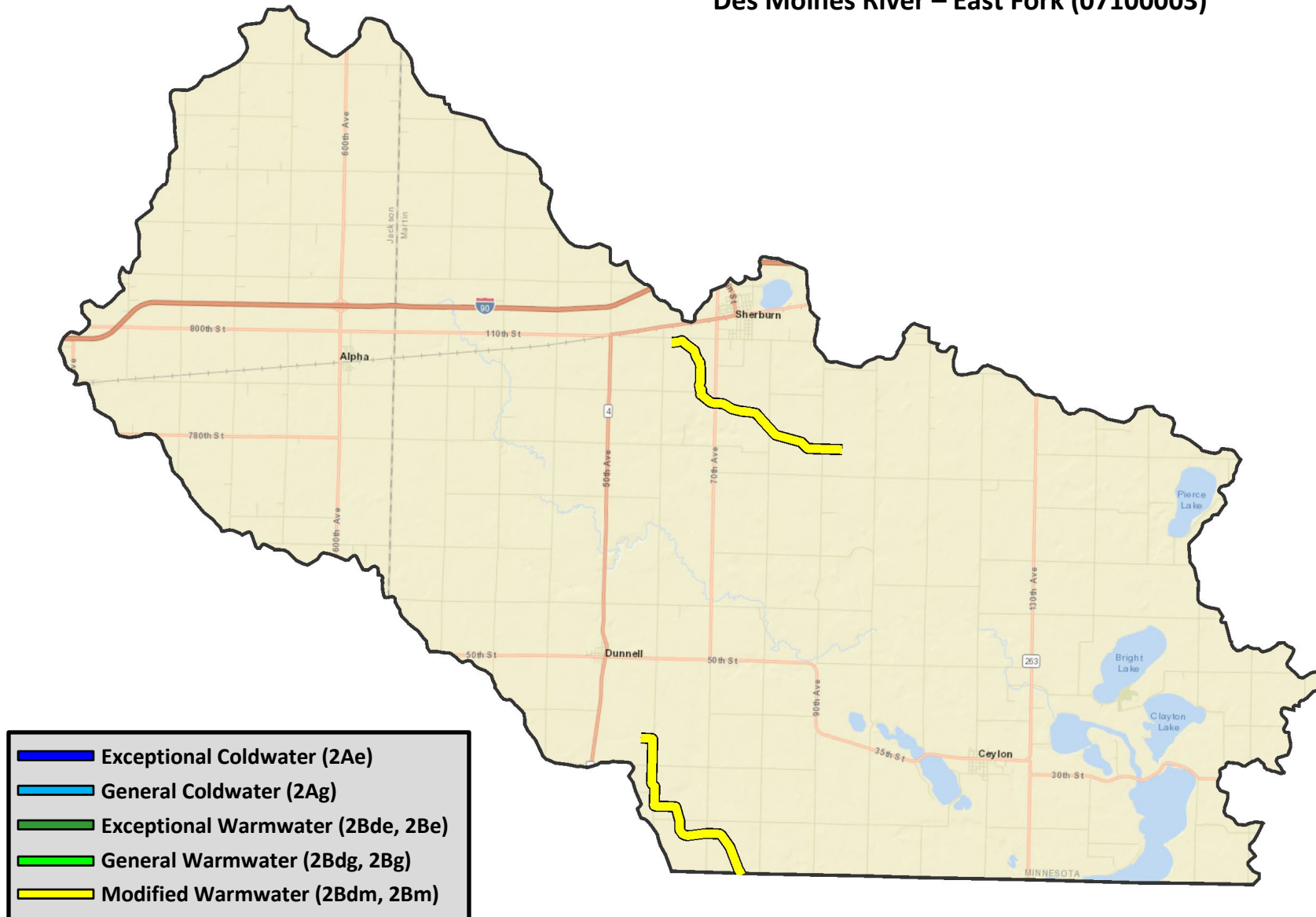
Brown Creek (Judicial Ditch 10) (07100002-502)



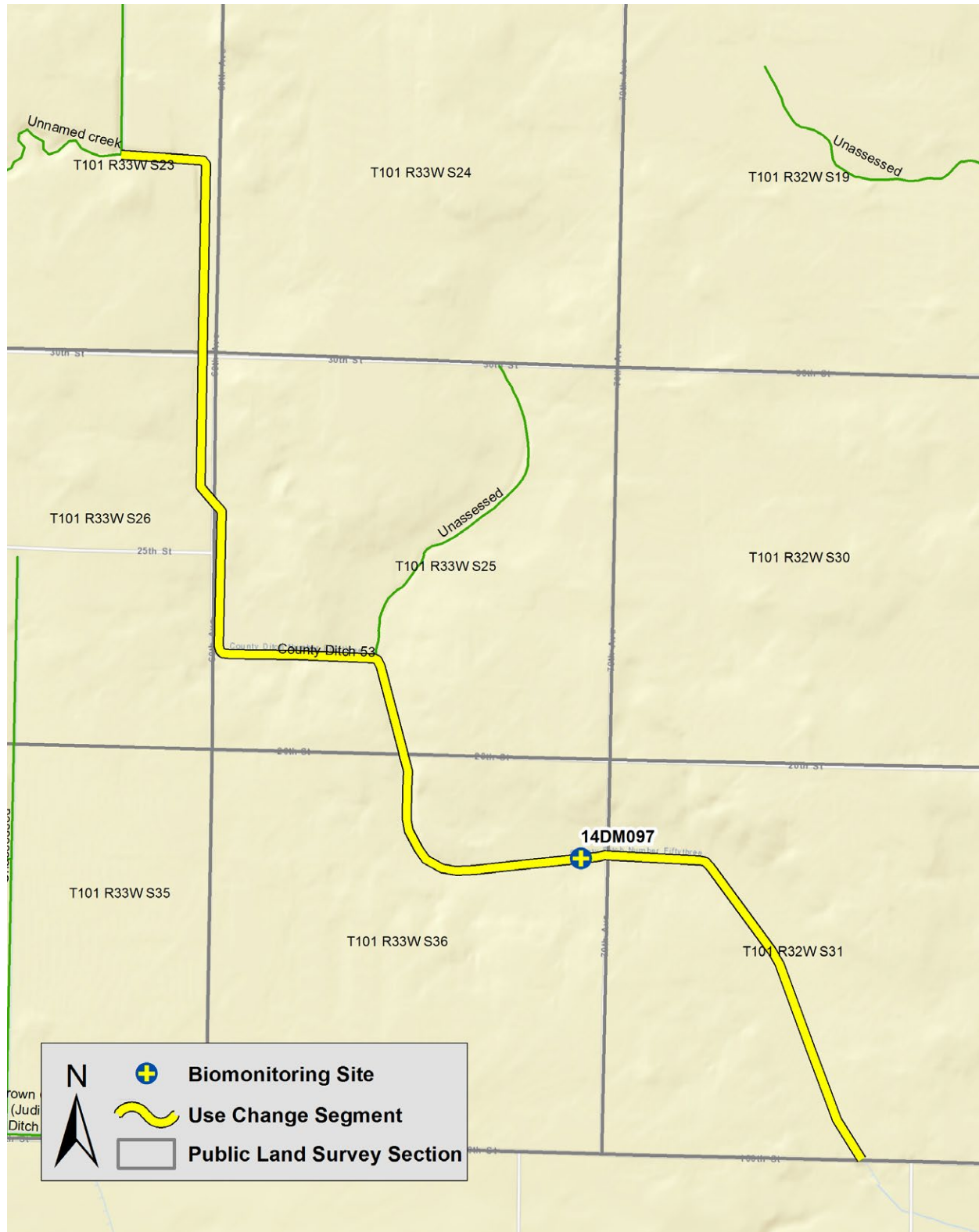
Judicial Ditch 6 (07100002-513)



Des Moines River – East Fork (07100003)



County Ditch 53 (07100003-506)



County Ditch 1/Judicial Ditch 50 (07100003-515)

