

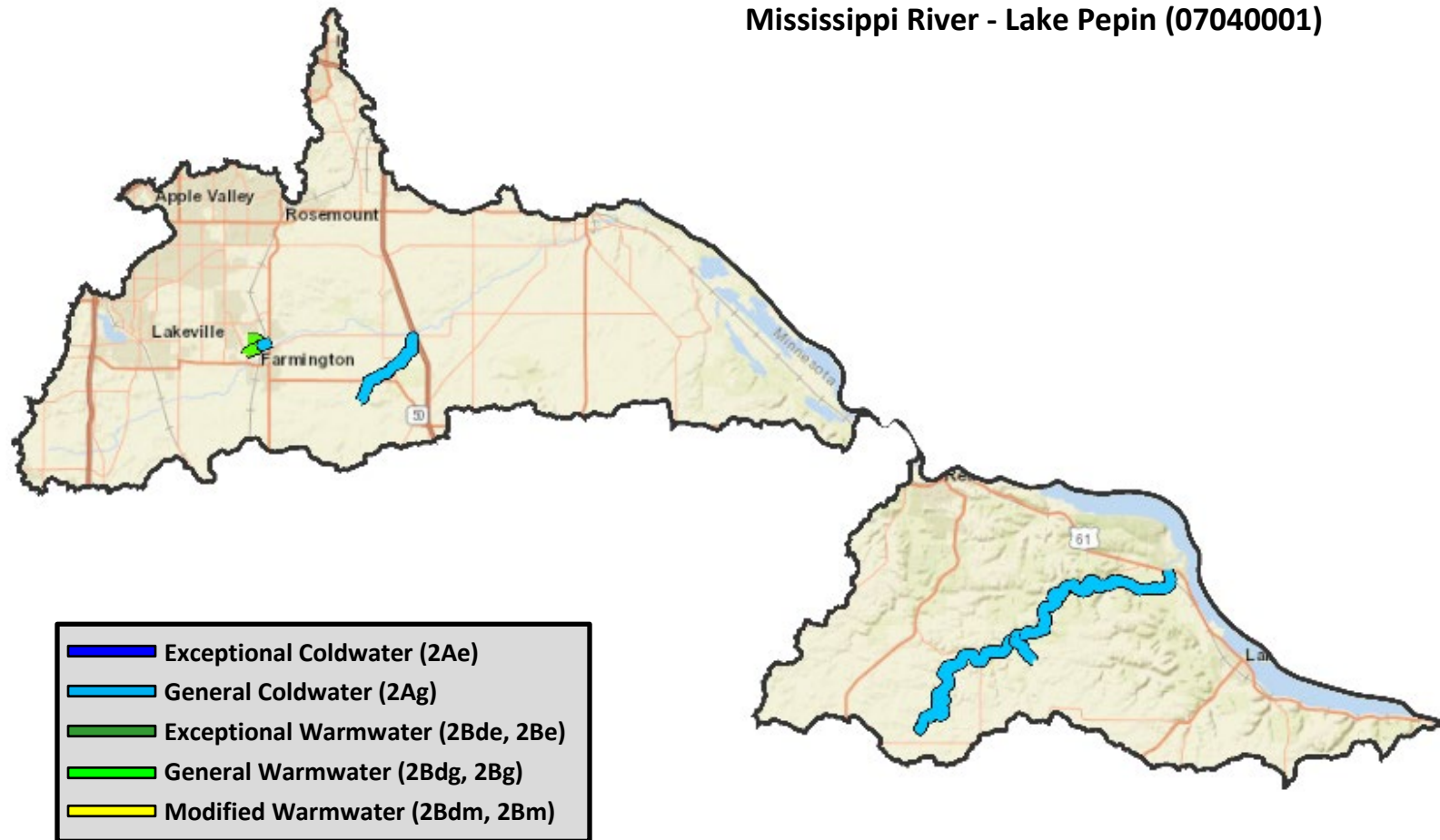
Appendix G: Maps of designated use changes - Lower Mississippi River Basin

Watersheds

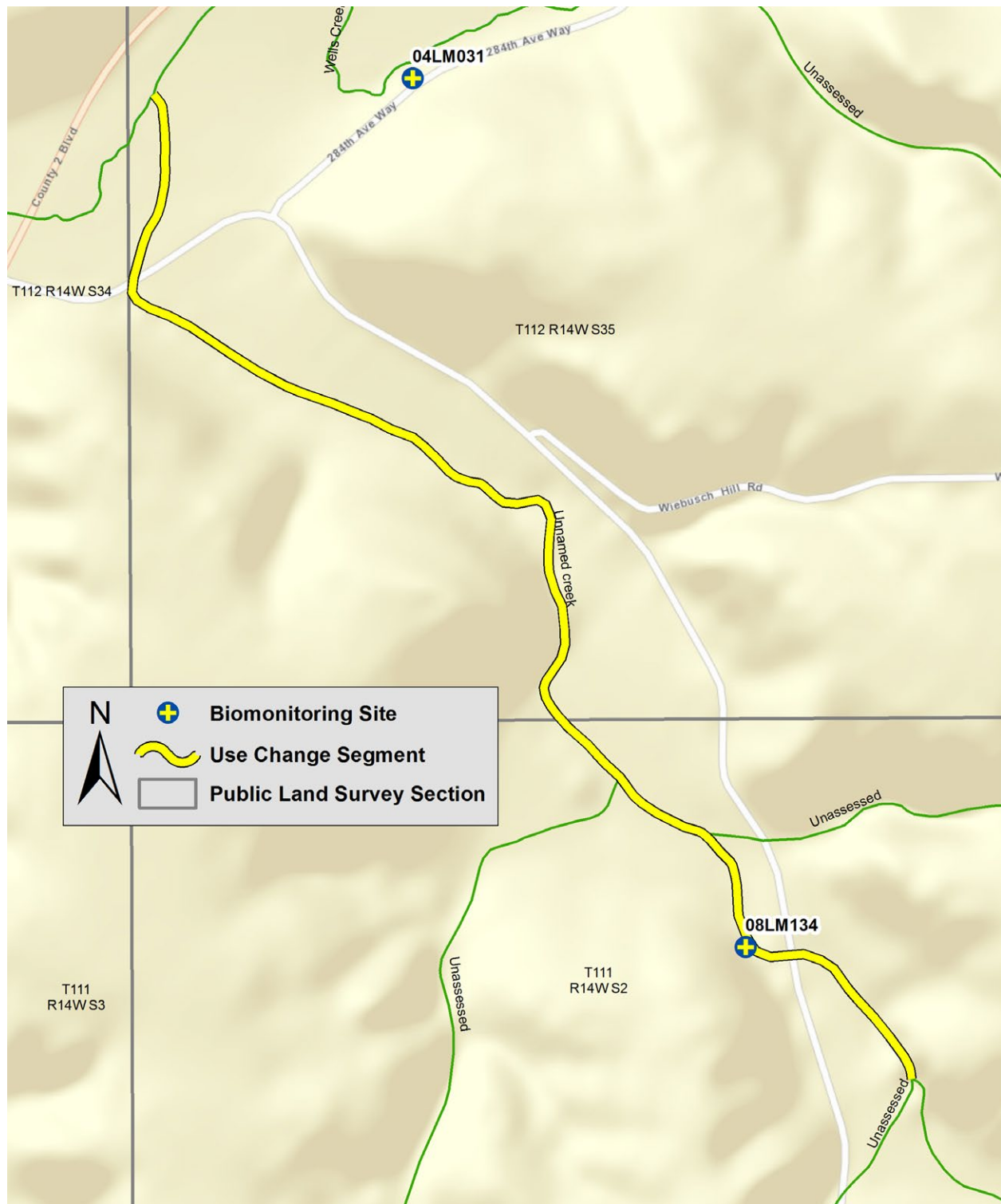
1. Mississippi River - Lake Pepin (07040001)
2. Cannon River (07040002)
3. Mississippi River - Winona (07040003)
4. Root River (07040008)
5. Upper Iowa River (07060002)

wq-rule4-21a7

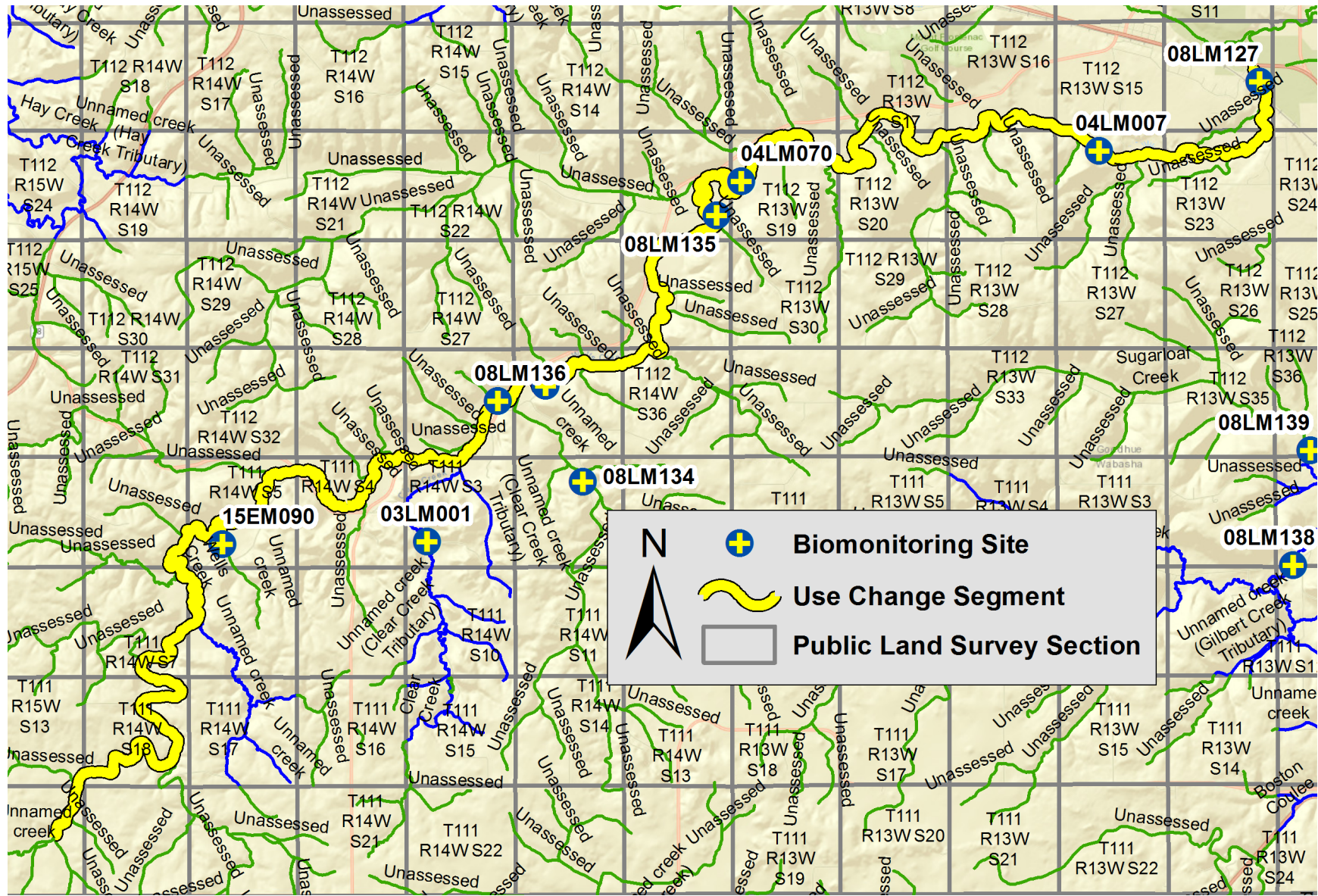
Mississippi River - Lake Pepin (07040001)



Unnamed creek (07040001-700)



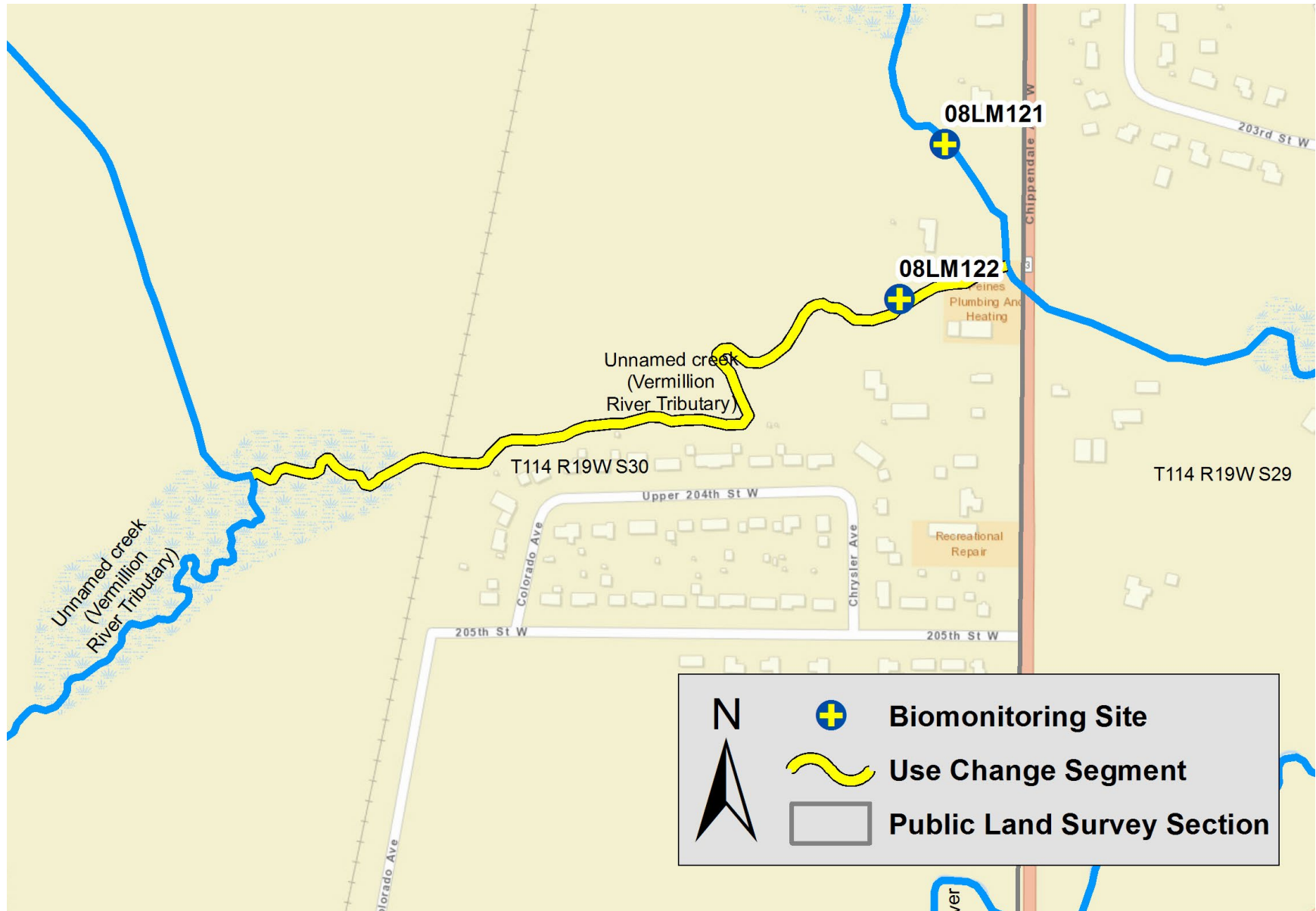
Wells Creek (07040001-708)



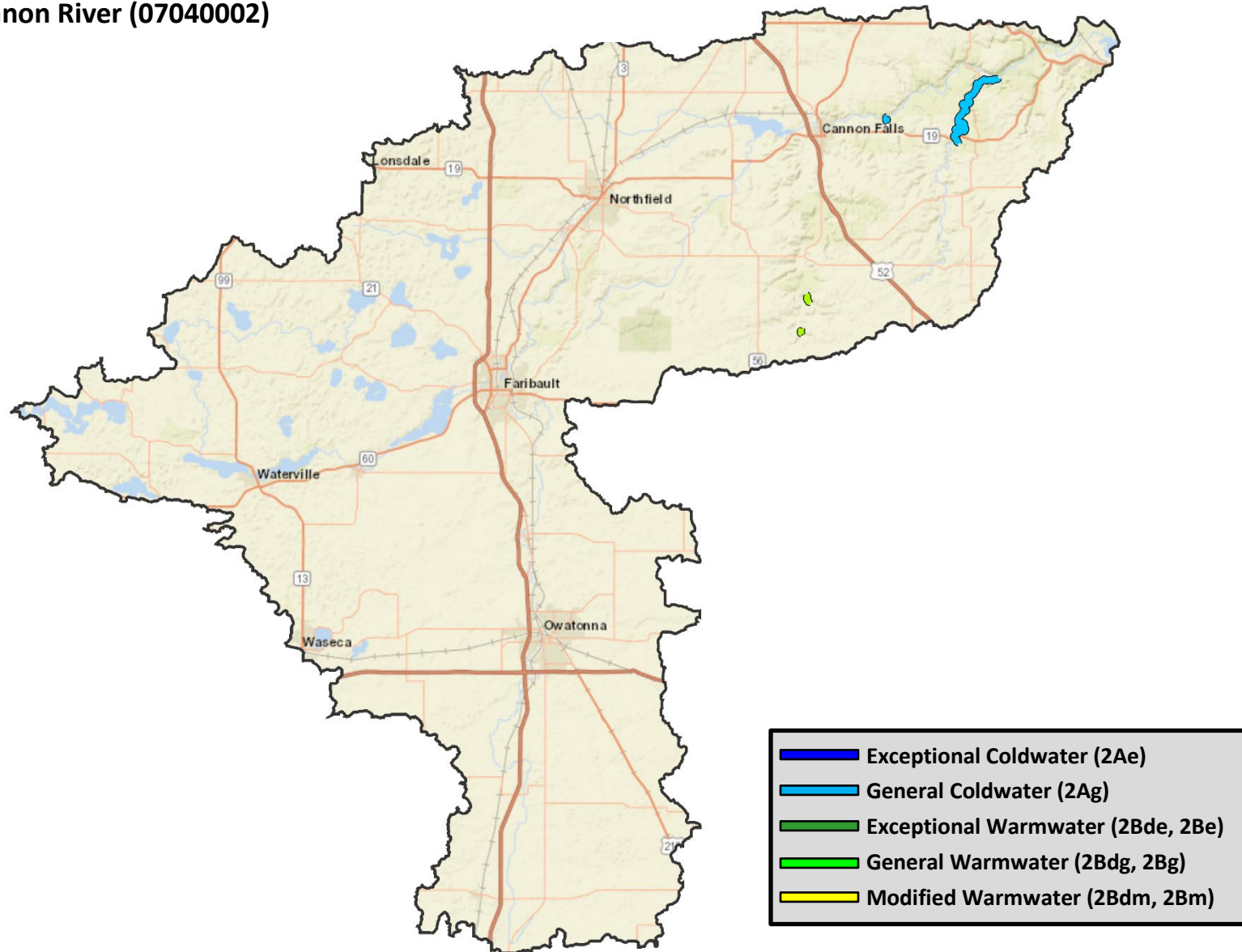
Unnamed creek (Vermillion River Tributary) (07040001-720)



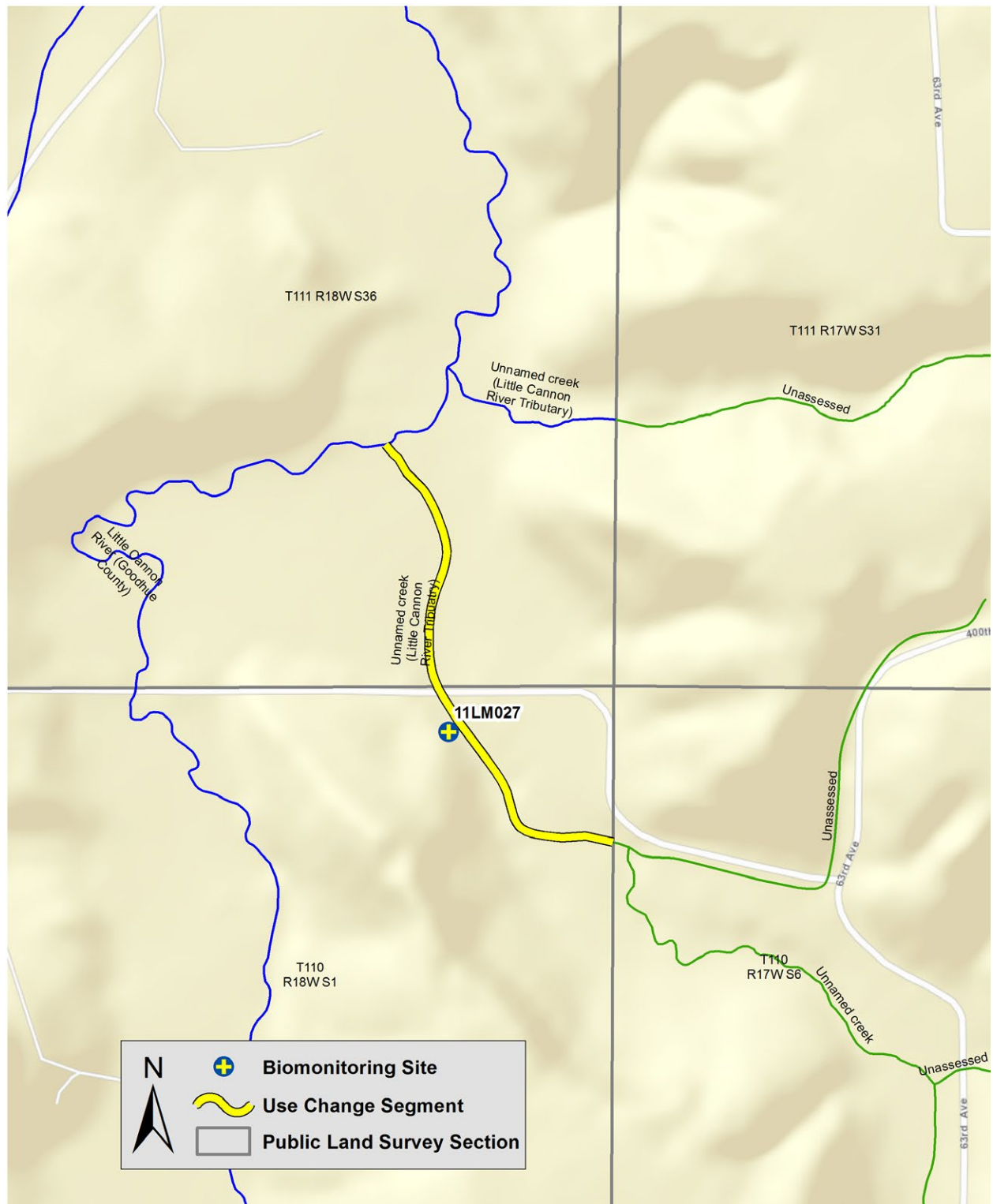
Unnamed creek (Vermillion River Tributary) (07040001-721)



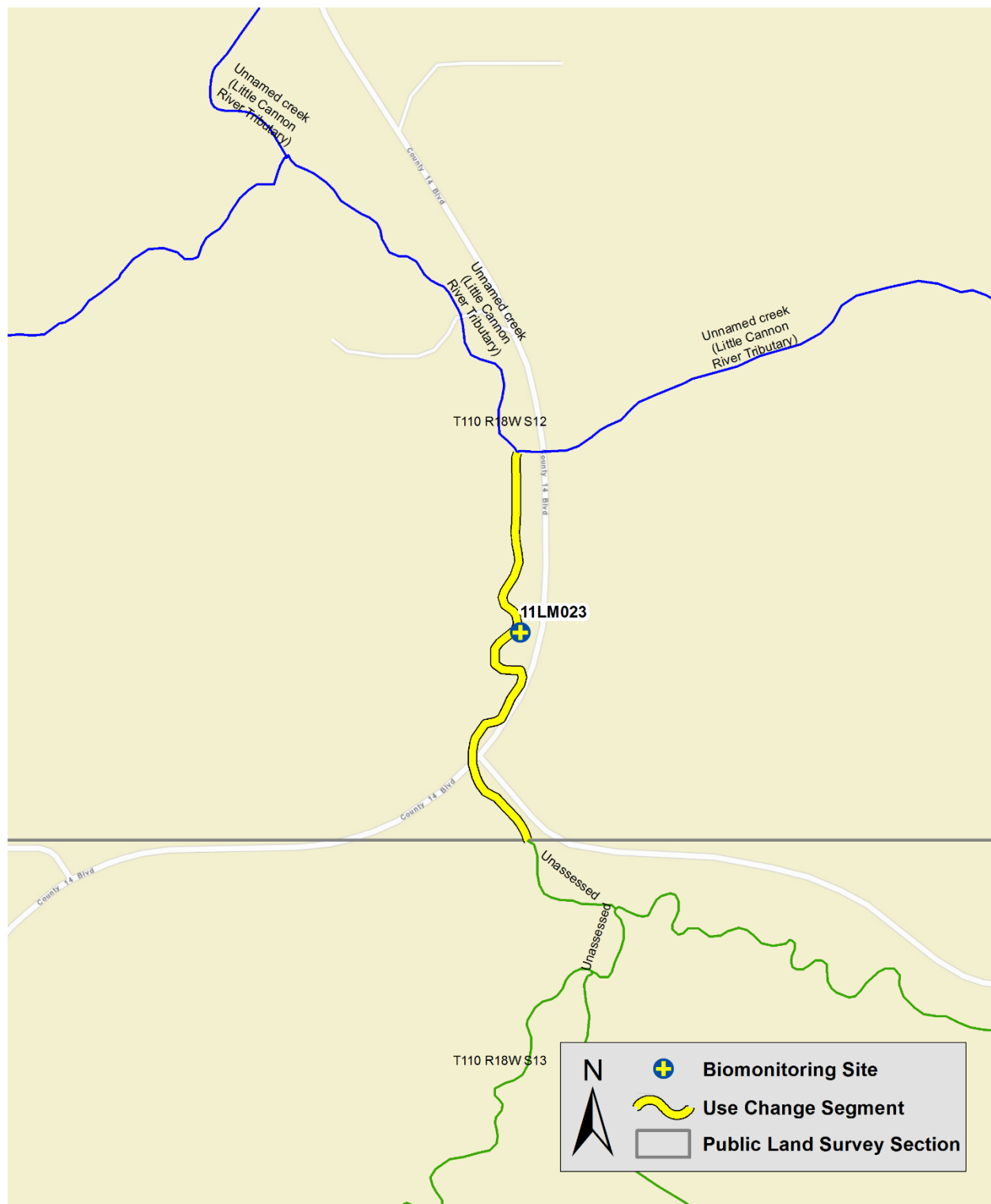
Cannon River (07040002)



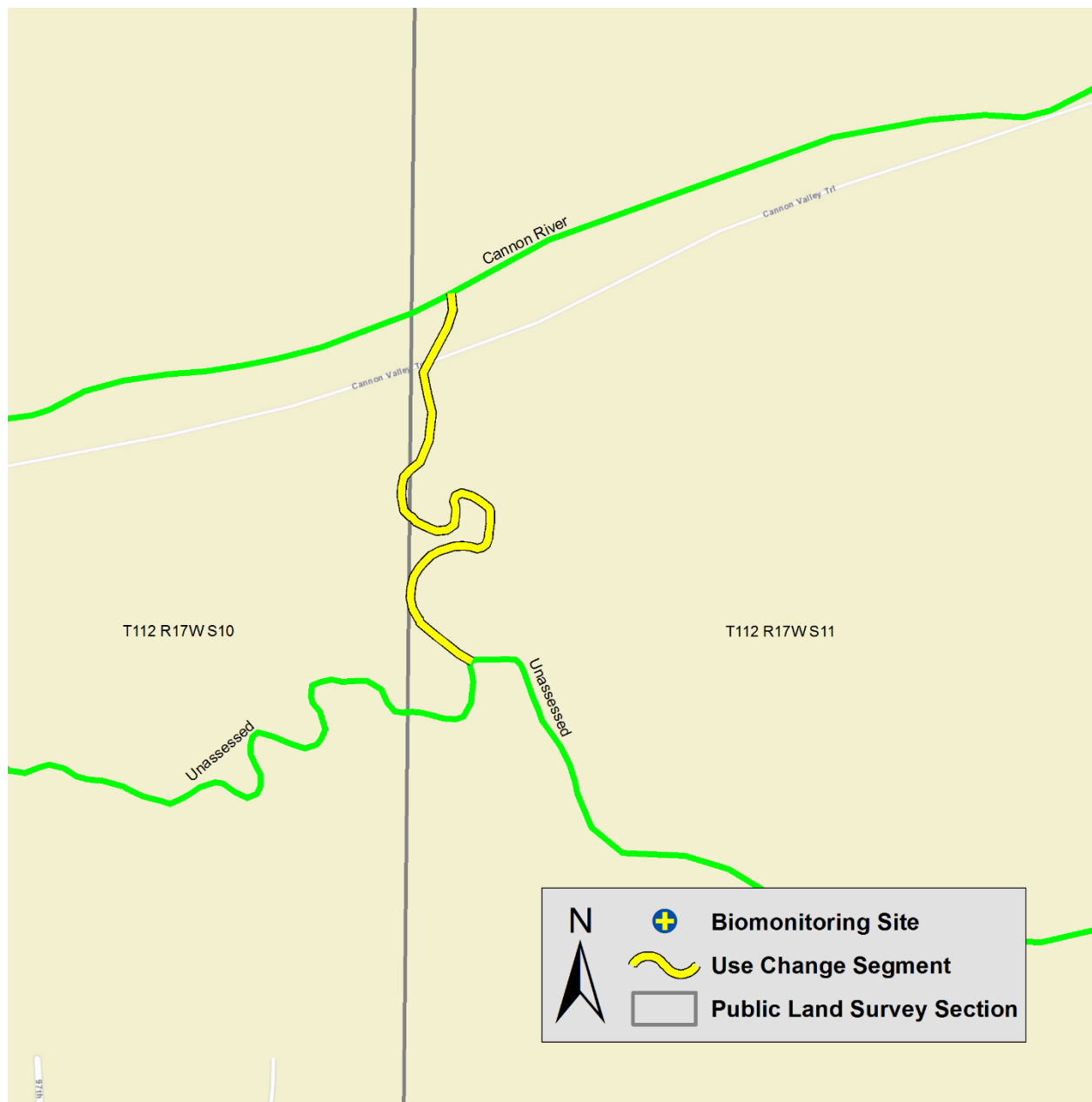
Unnamed creek (Little Cannon River Tributary) (07040002-639)



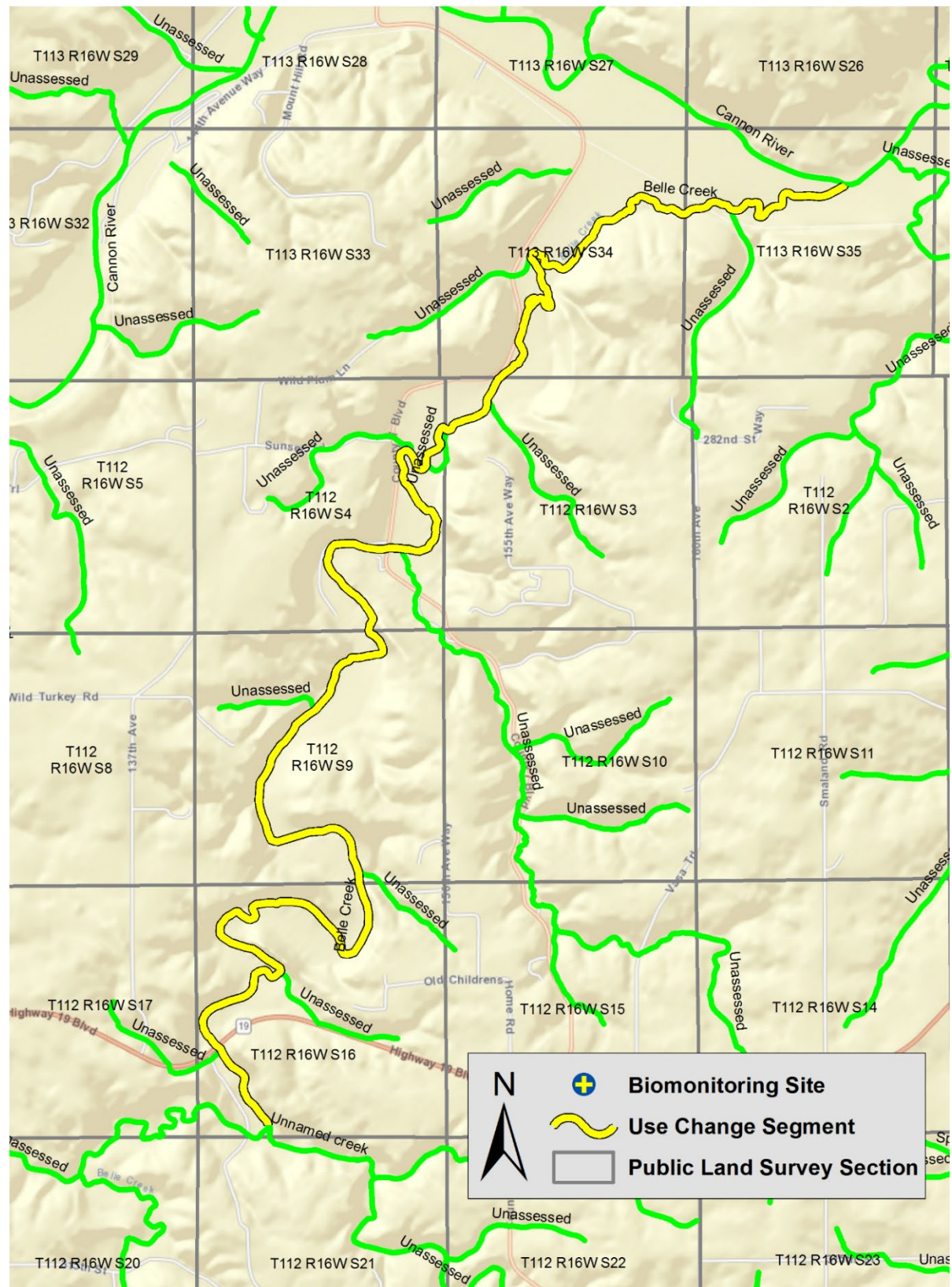
Unnamed creek (Little Cannon River Tributary) (07040002-670)



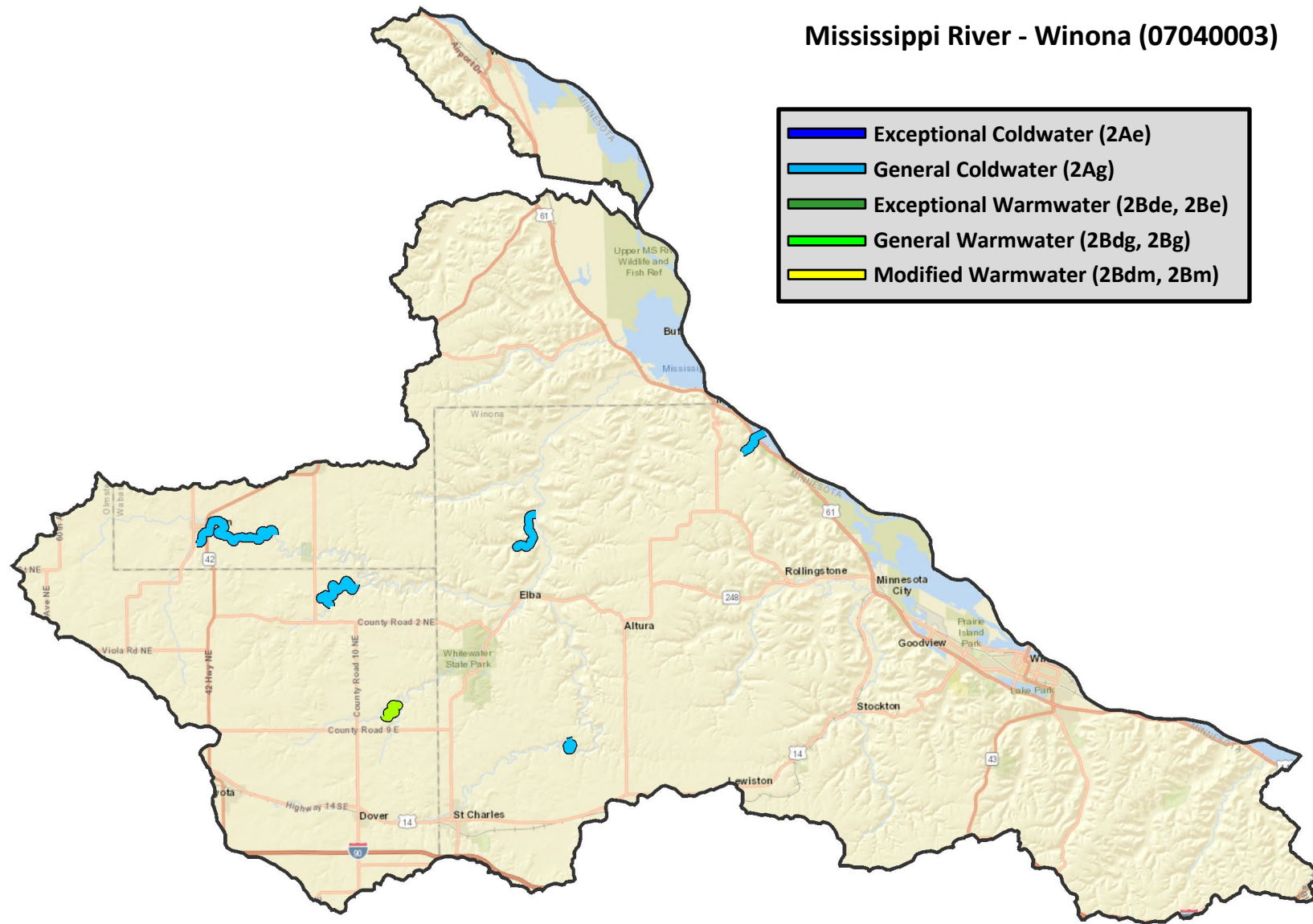
Unnamed creek (Trail Run Creek) (07040002-738)



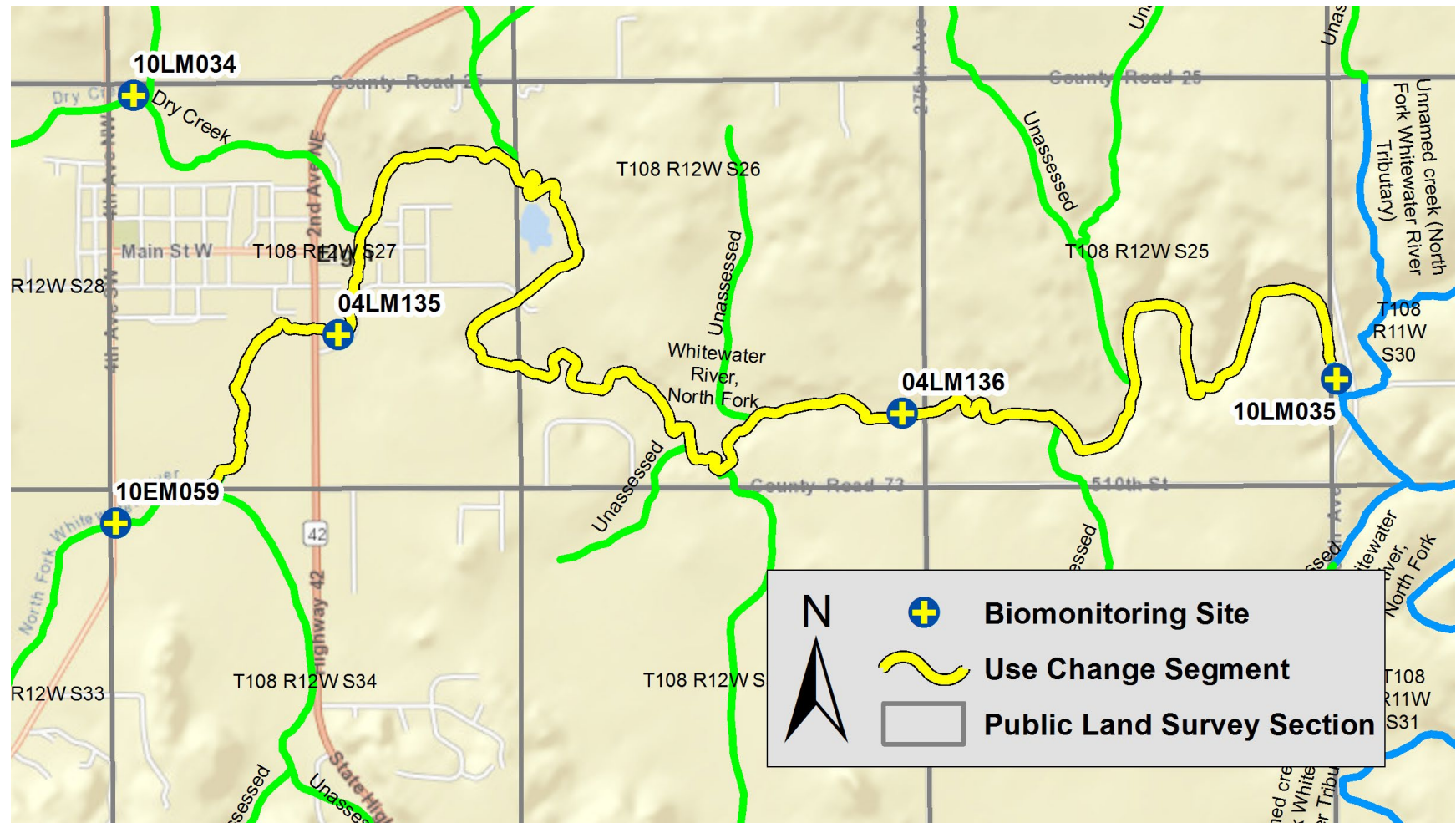
Belle Creek (07040002-740)



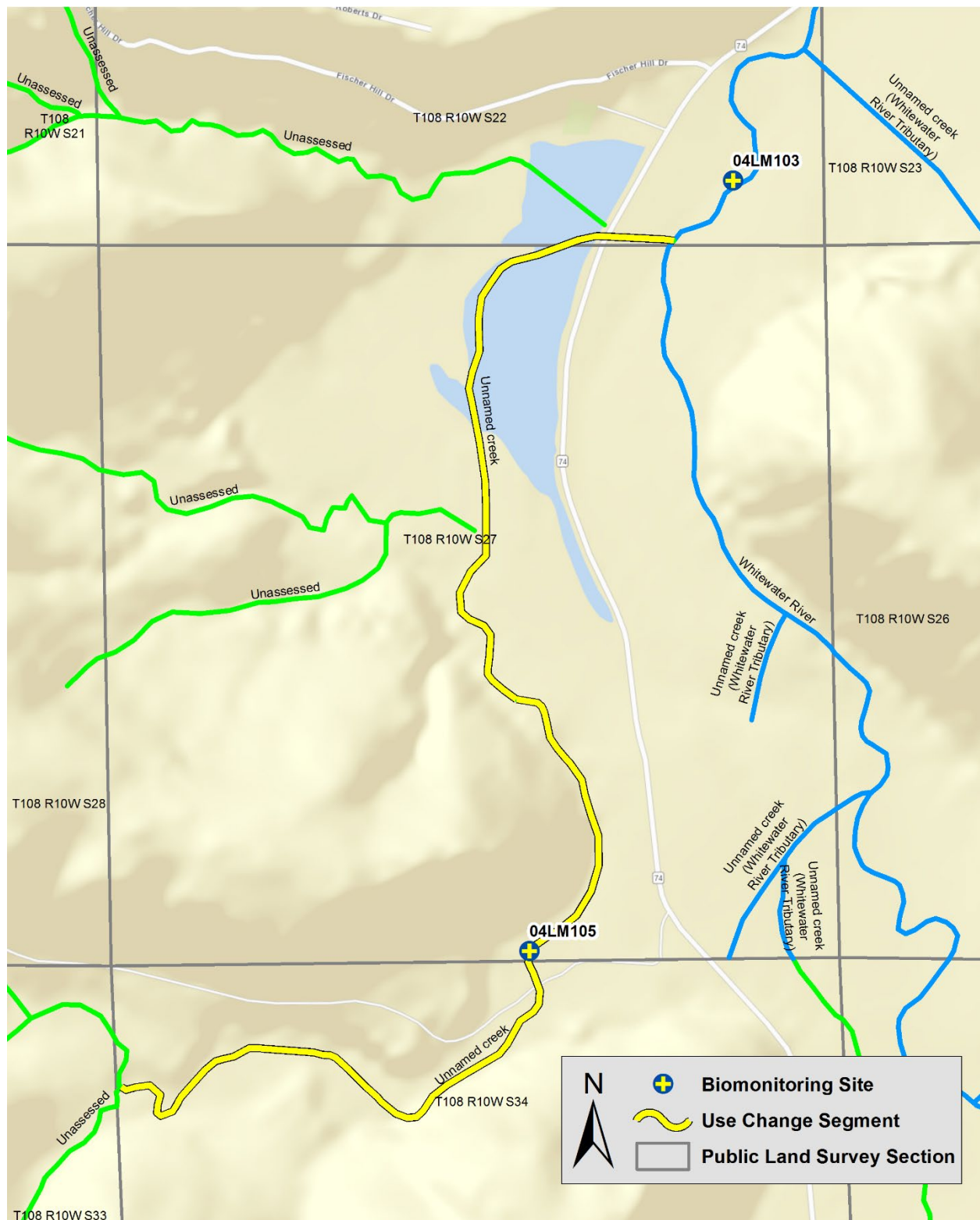
Mississippi River - Winona (07040003)



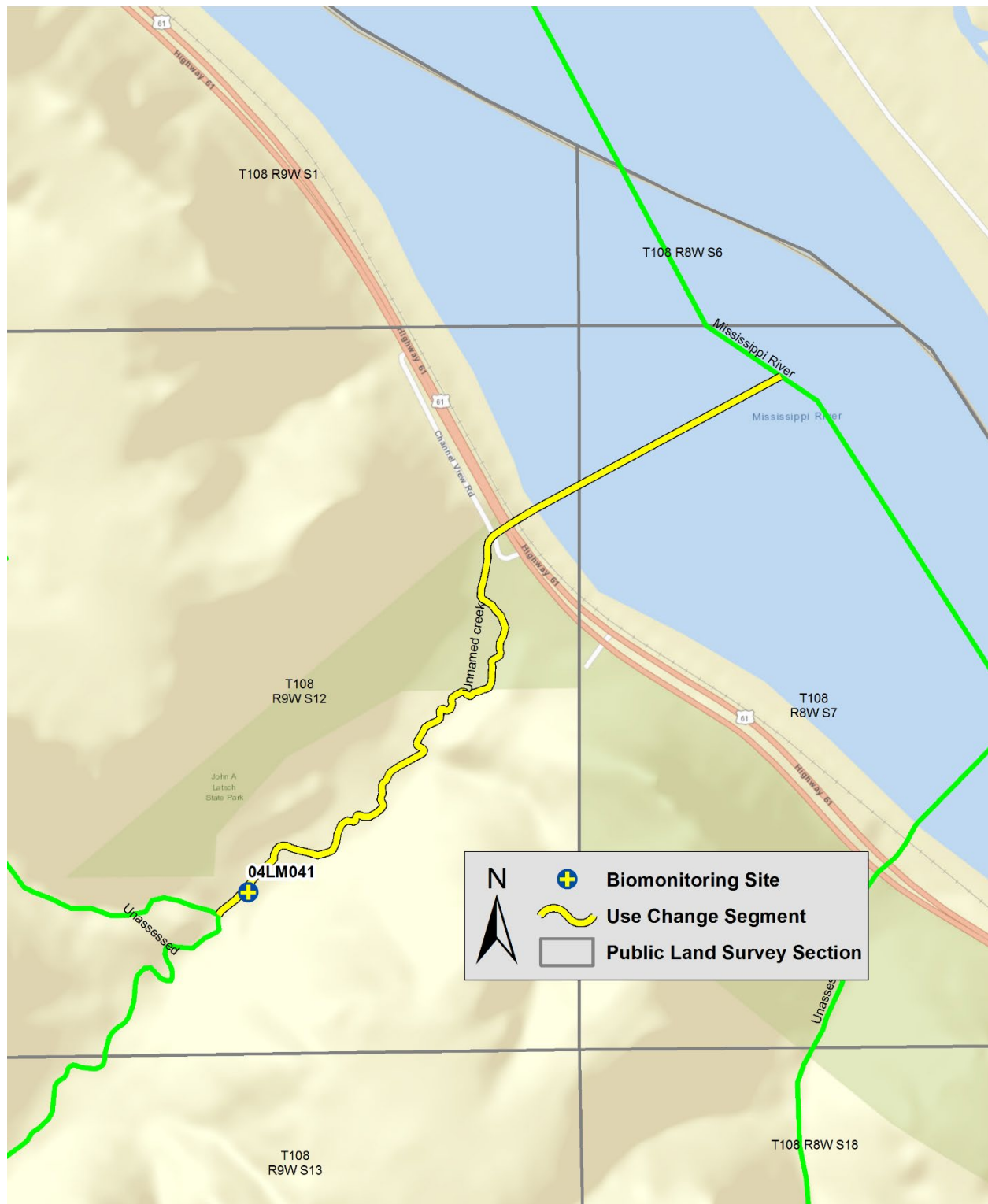
Whitewater River, North Fork (07040003-524)



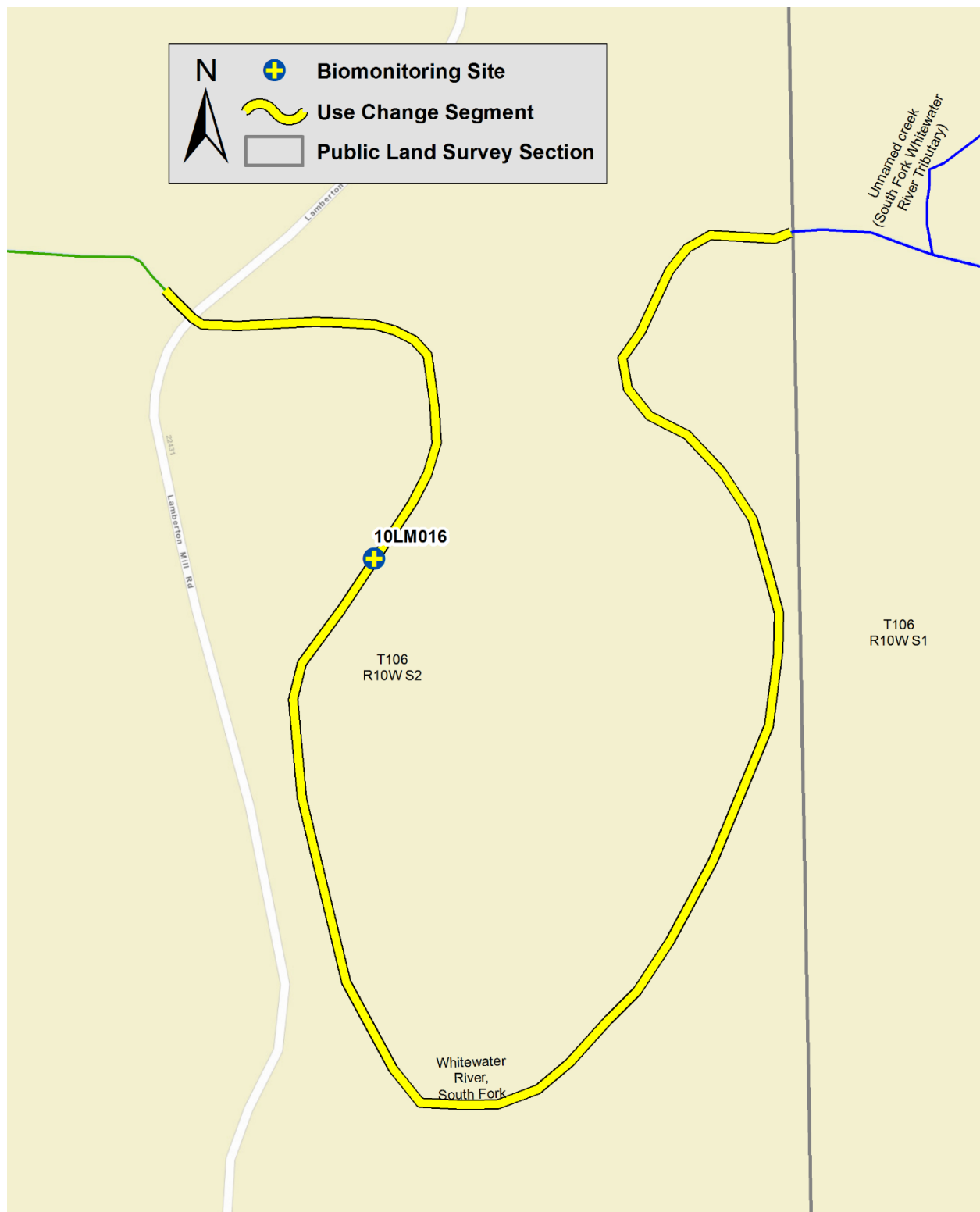
Unnamed creek (Monarch Creek) (07040003-609)



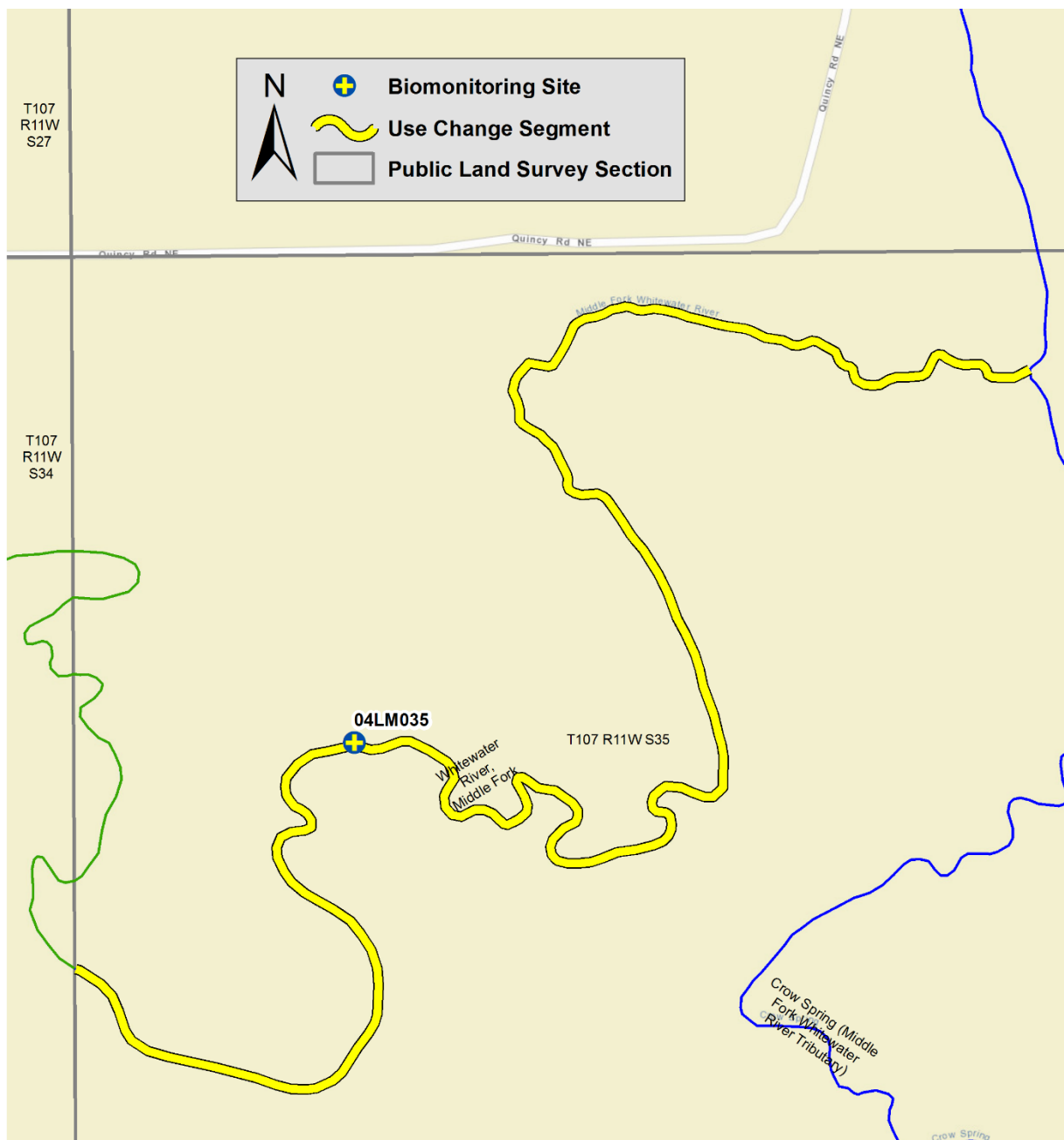
Unnamed creek (Latsch Creek) (07040003-625)



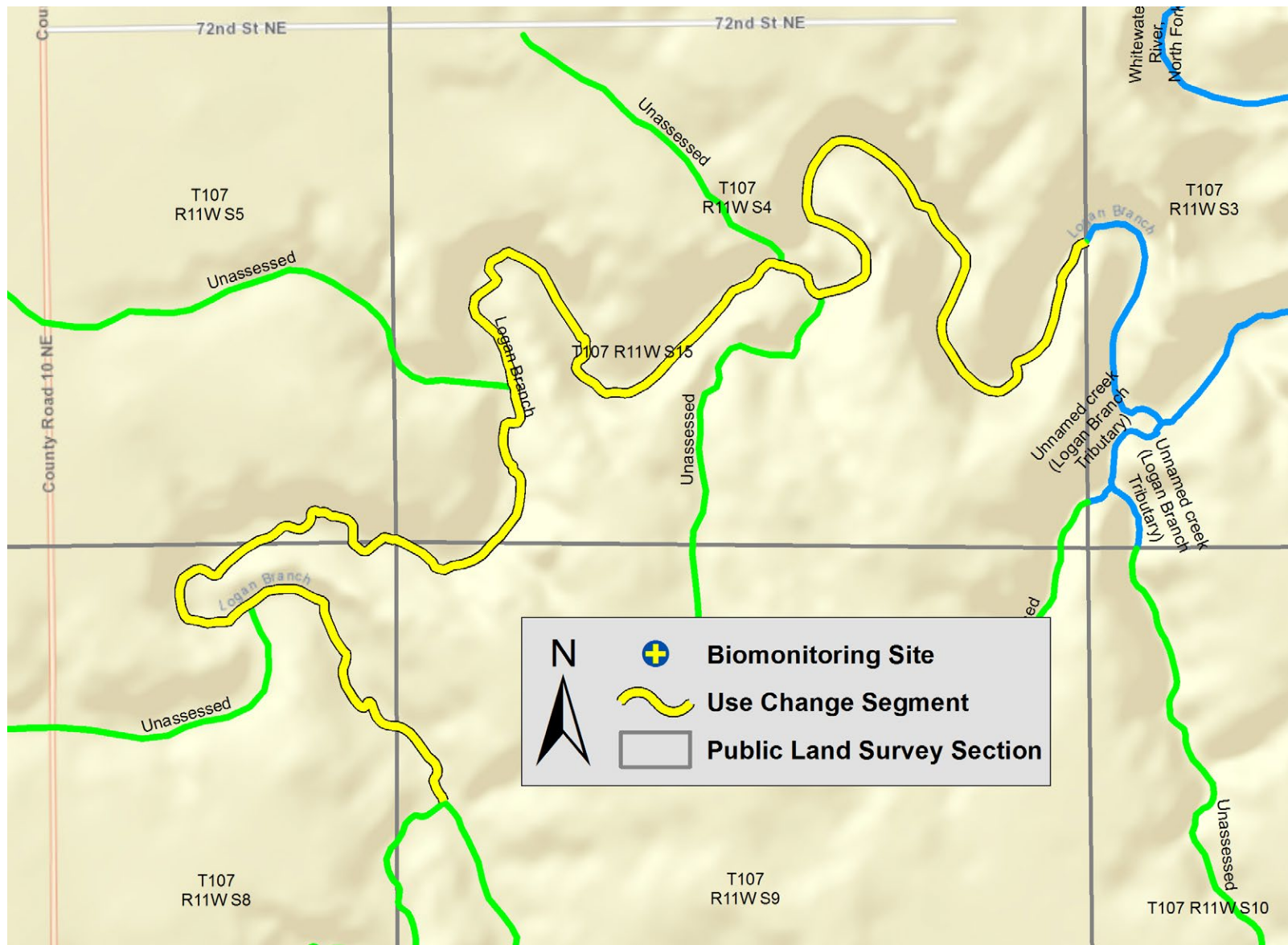
Whitewater River, South Fork (07040003-F17)



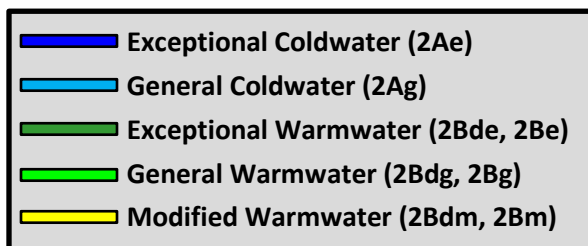
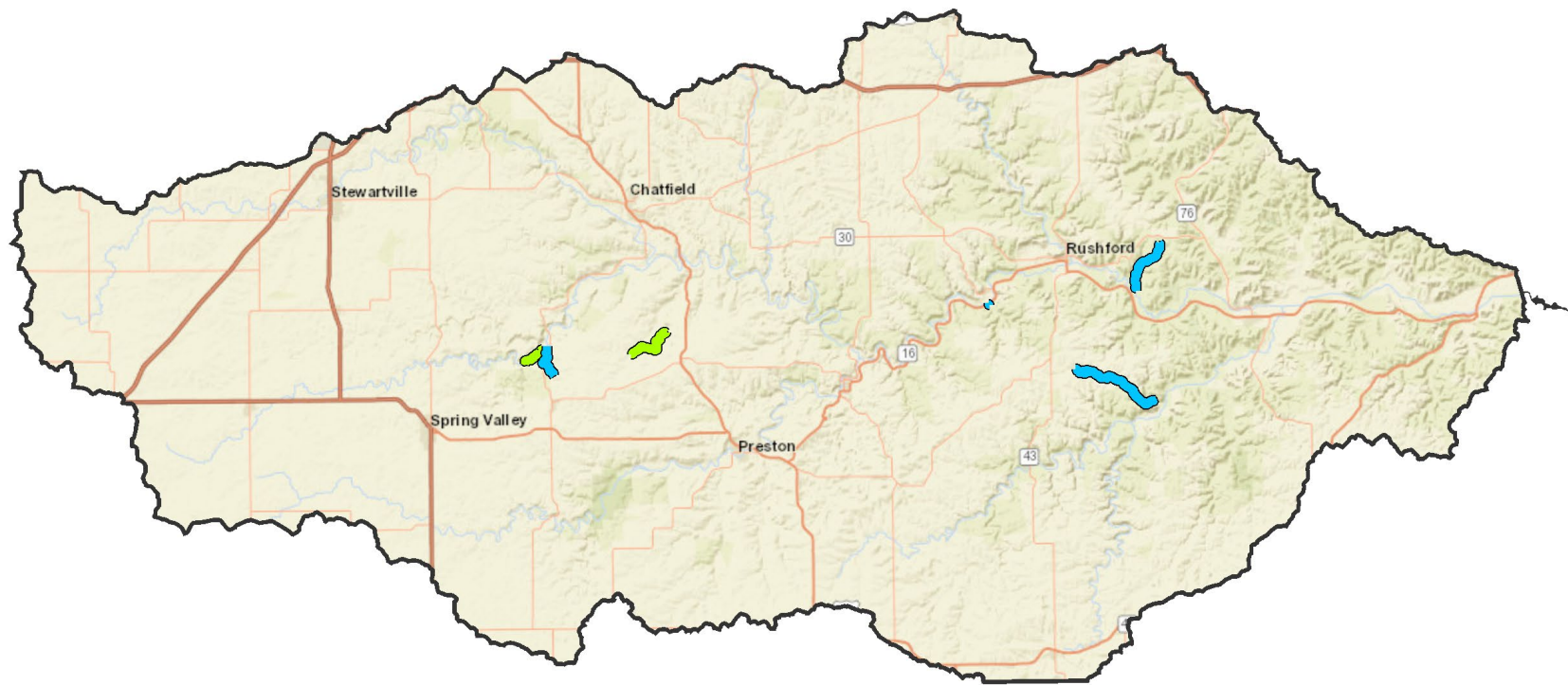
Whitewater River, Middle Fork (07040003-F18)



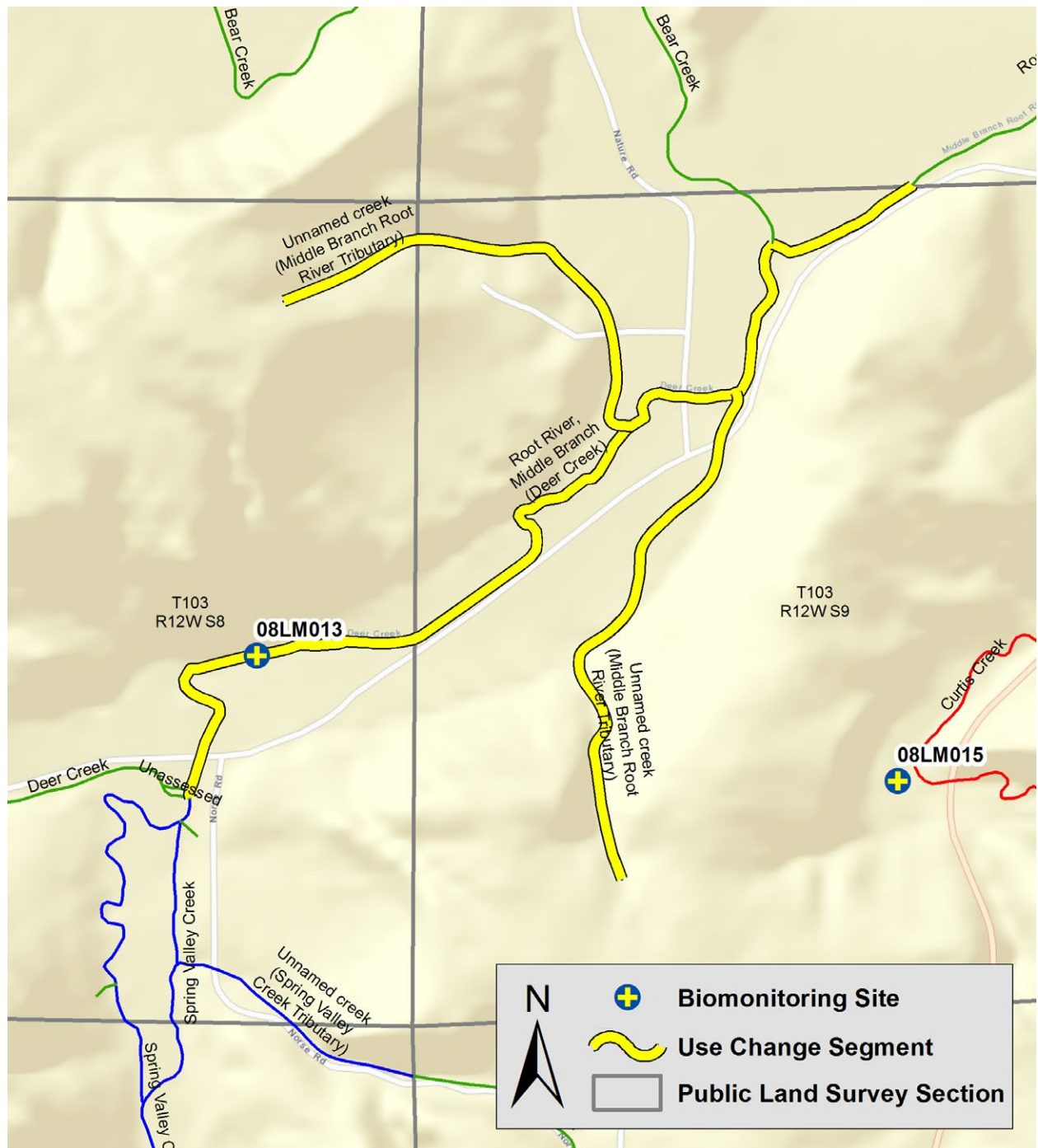
Logan Branch (07040003-F31)



Root River (07040008)

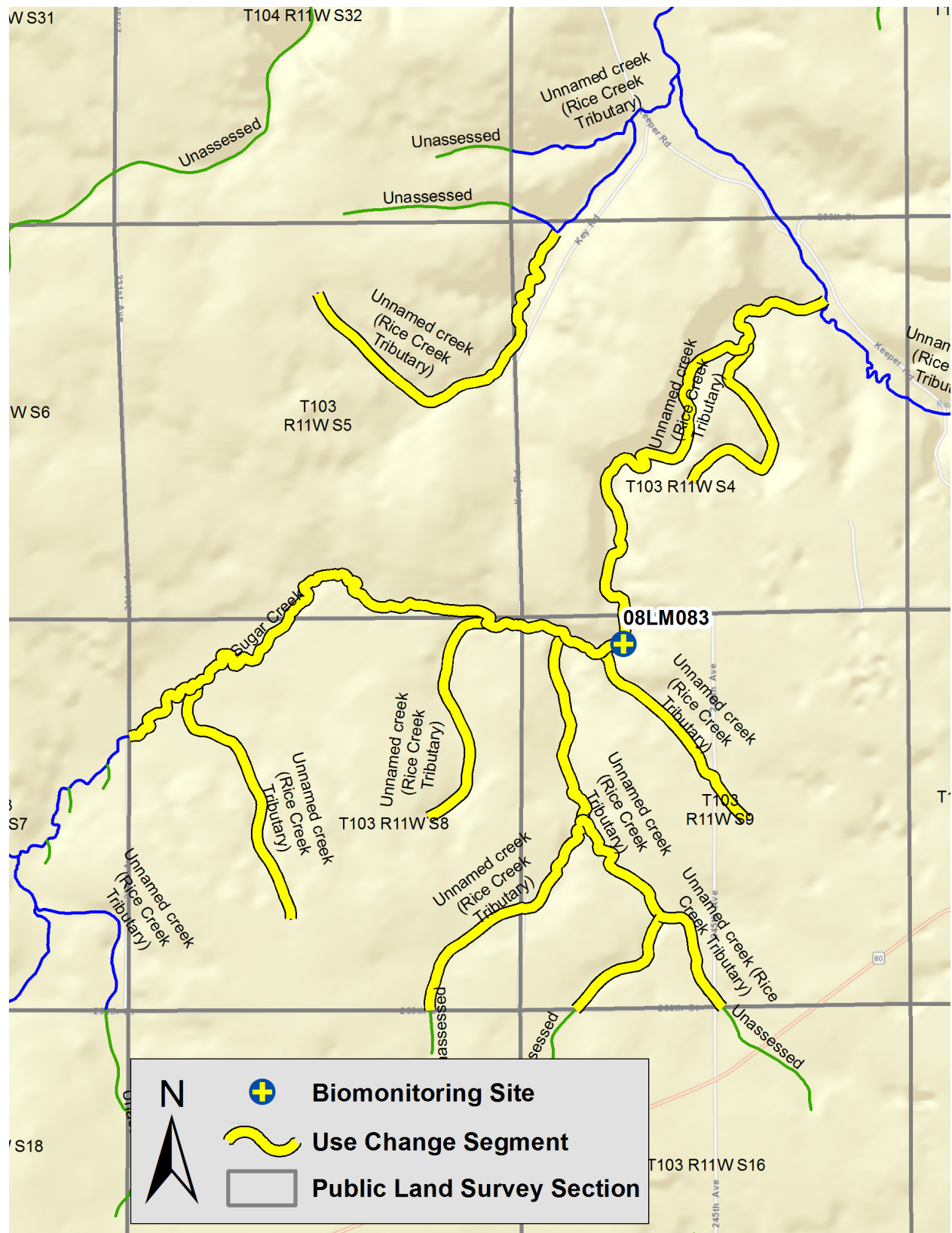


Root River, Middle Branch (07040008-545, 07040008-B95)

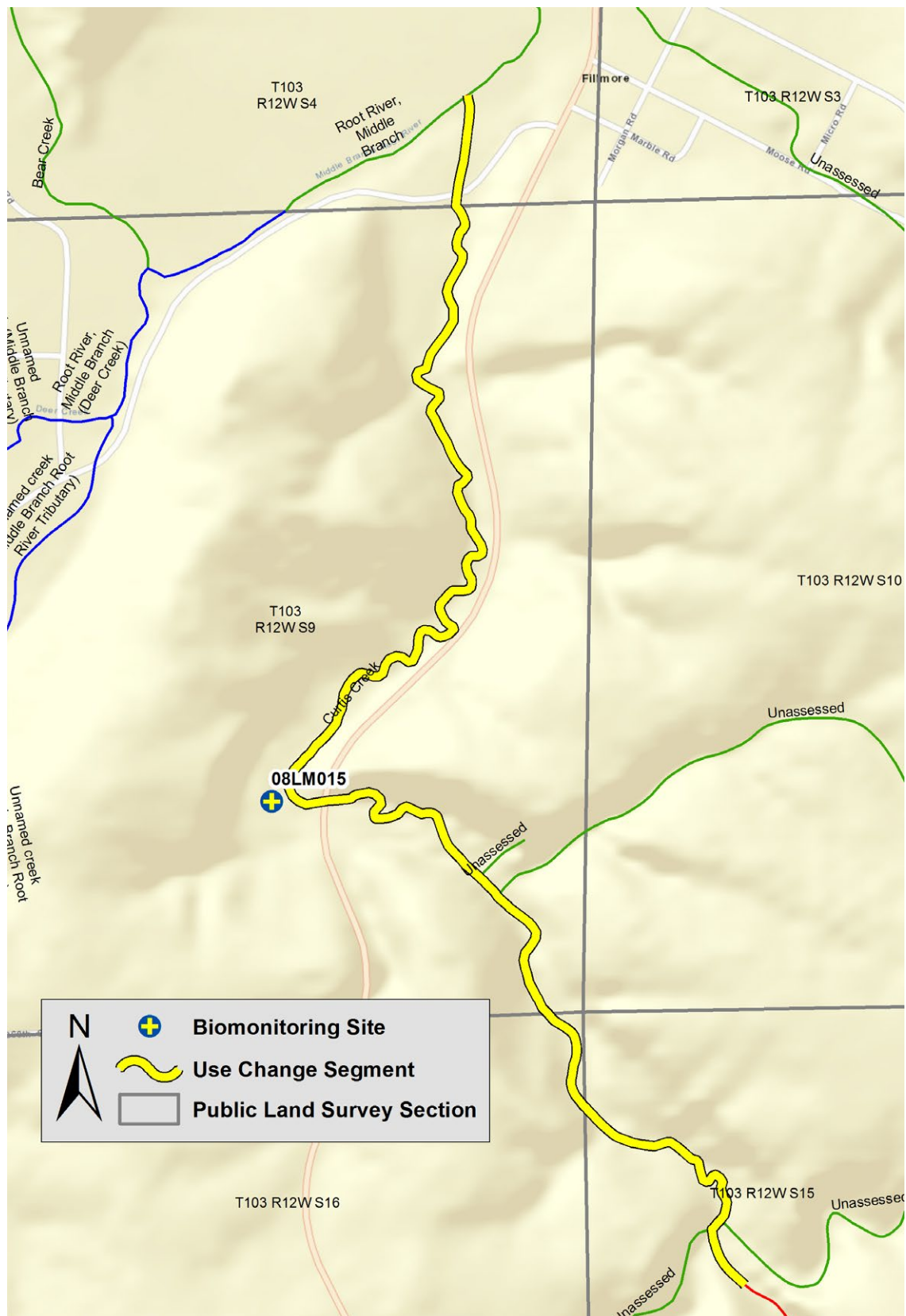


Unnamed creek (Camp Hayward Creek) (07040008-624)

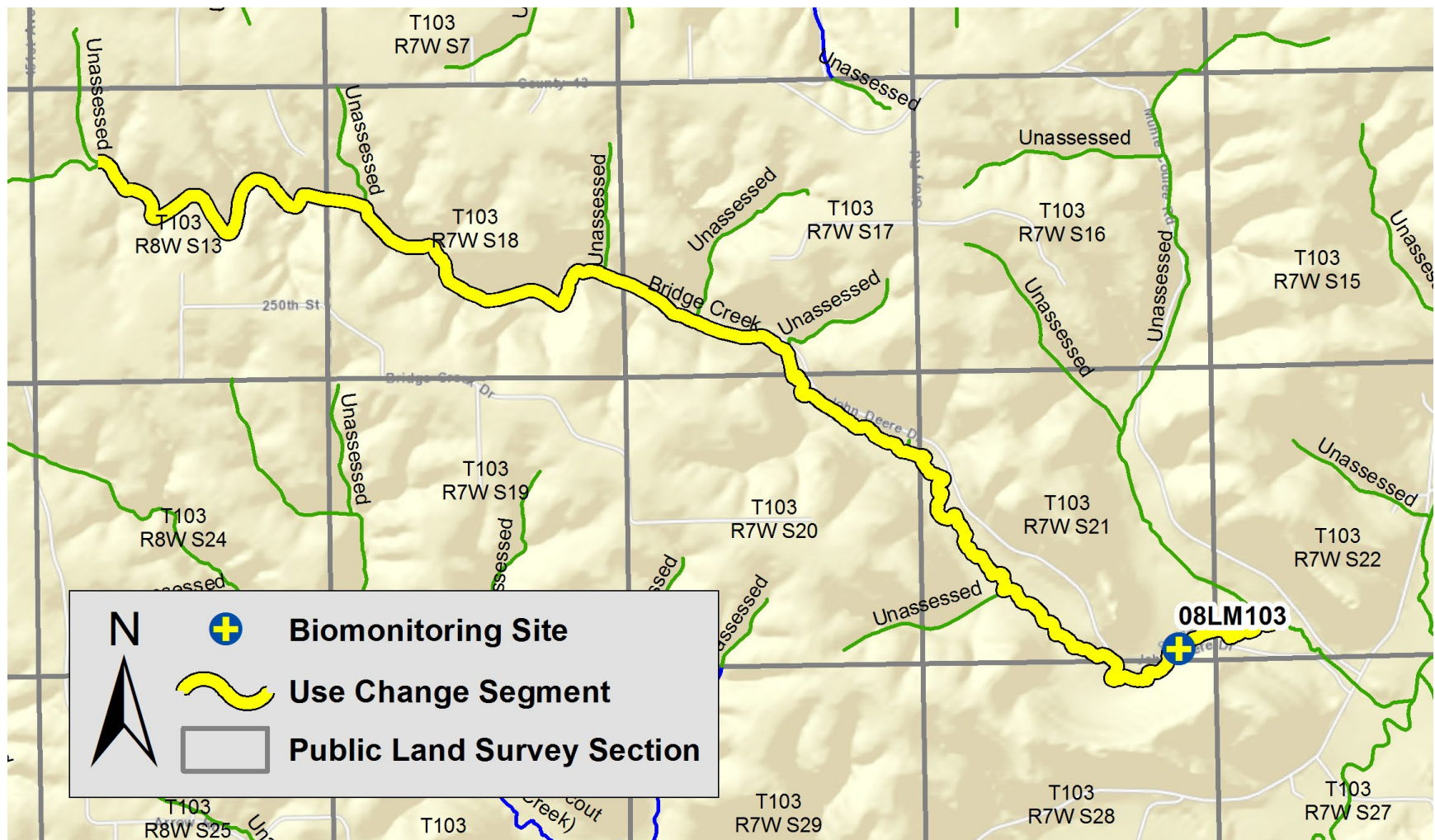
Sugar Creek (07040008-G86)



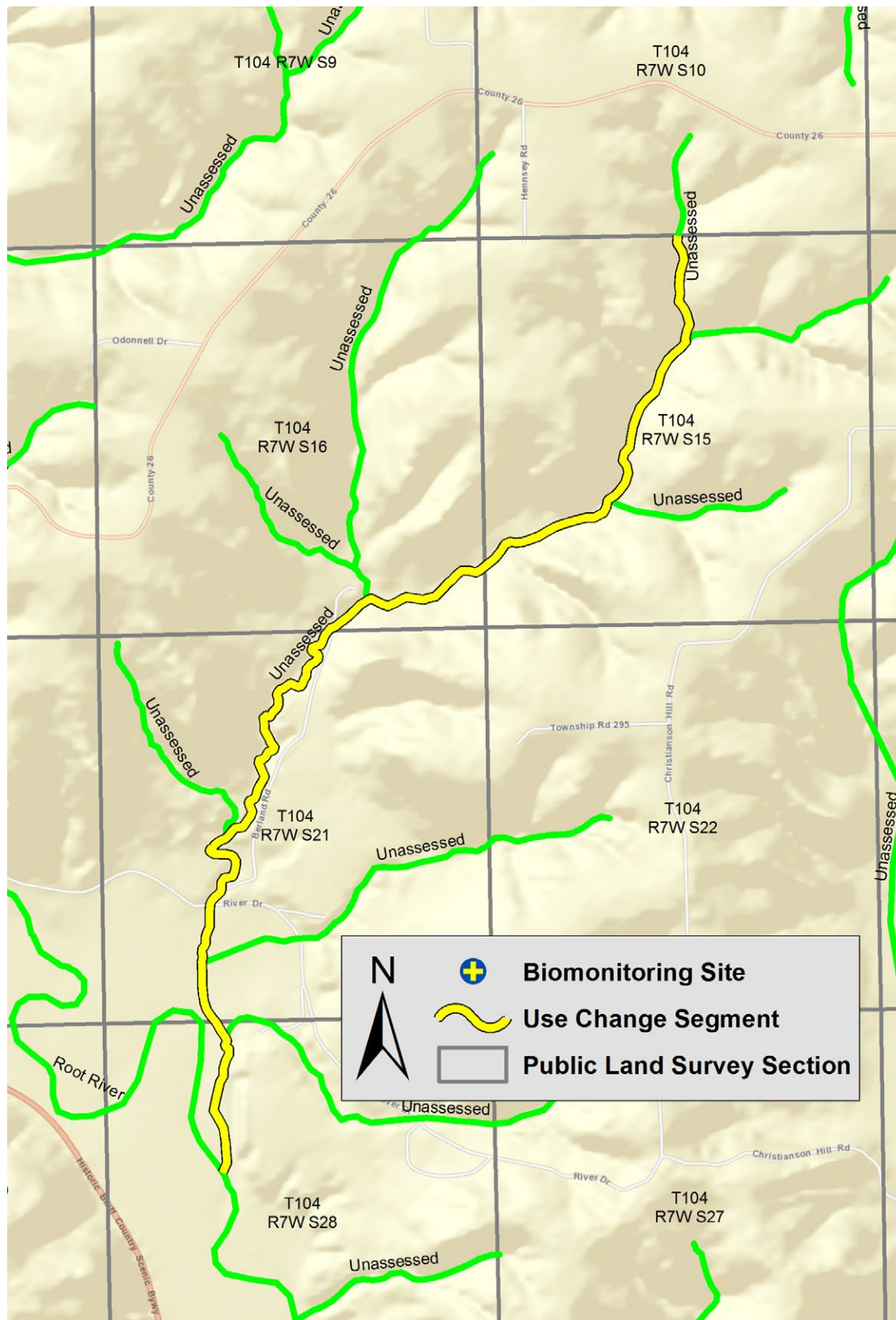
Curtis Creek (07040008-G90)



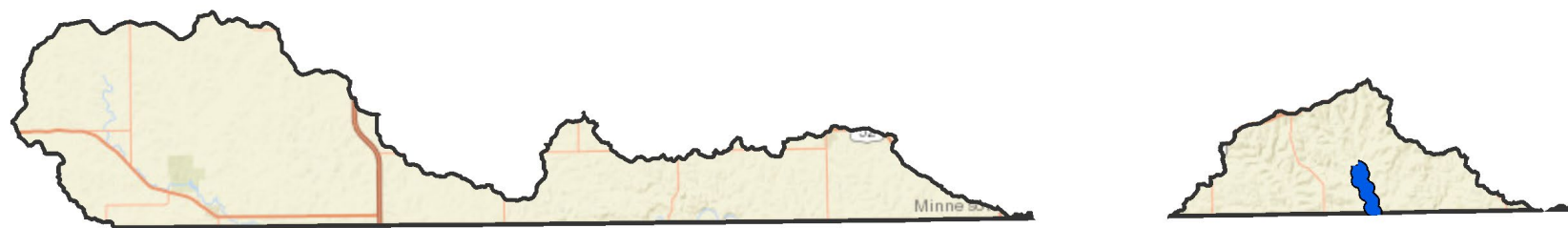
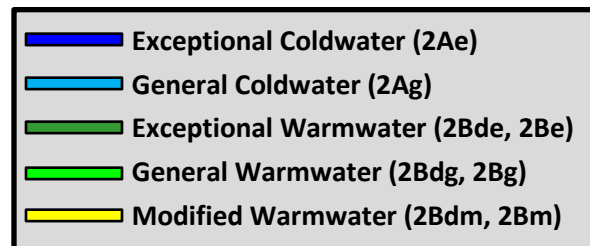
Bridge Creek (07040008-G92)



Unnamed creek (07040008-H02)



Upper Iowa River (07060002)



Bee Creek (Waterloo Creek) (07060002-515)

