

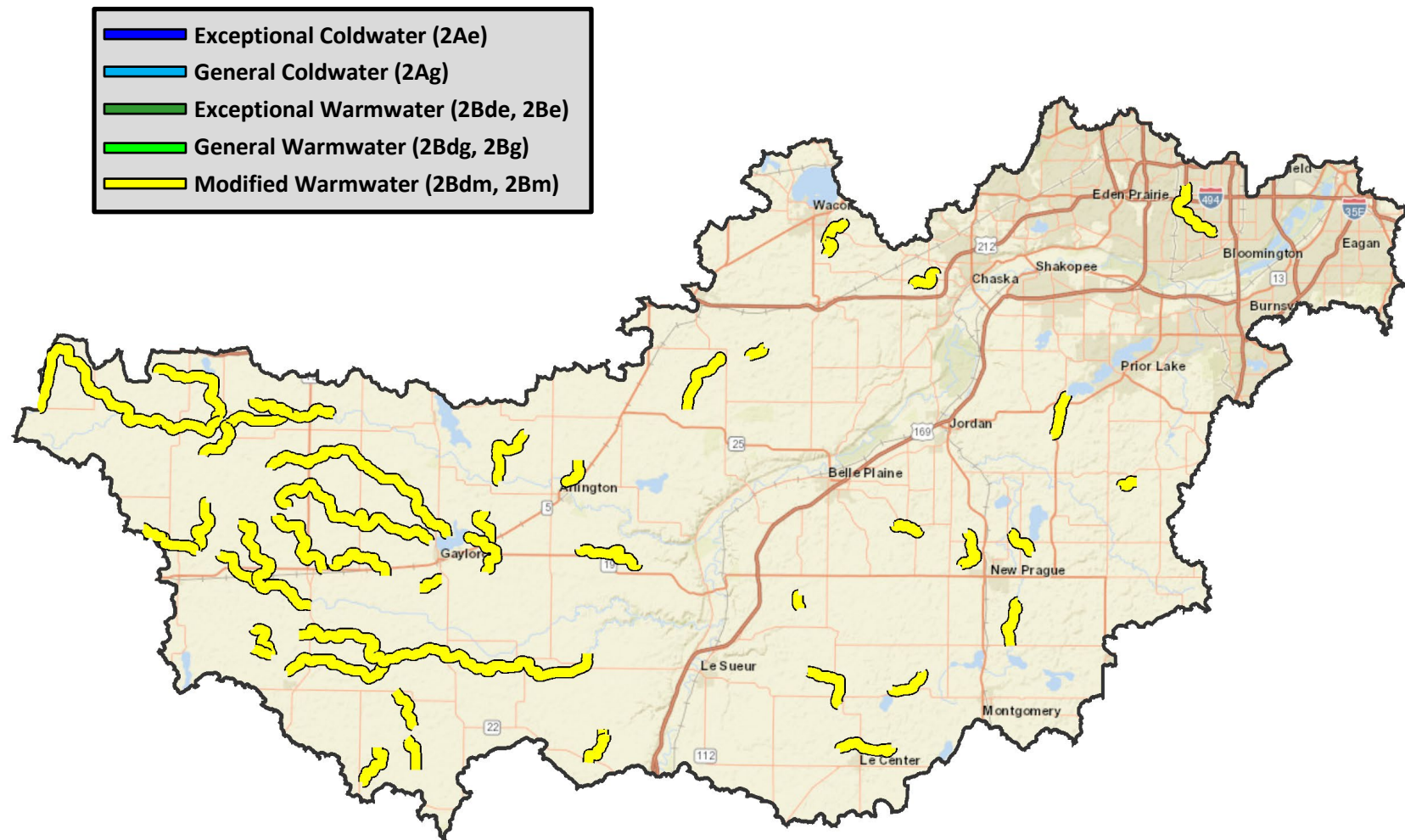
Appendix F: Maps of designated use changes - Minnesota River (part) and Saint Croix River Basins

Watersheds

1. Minnesota River - Lower (07020012) - part
2. Lower St. Croix River (07030005)

wq-rule4-21a6

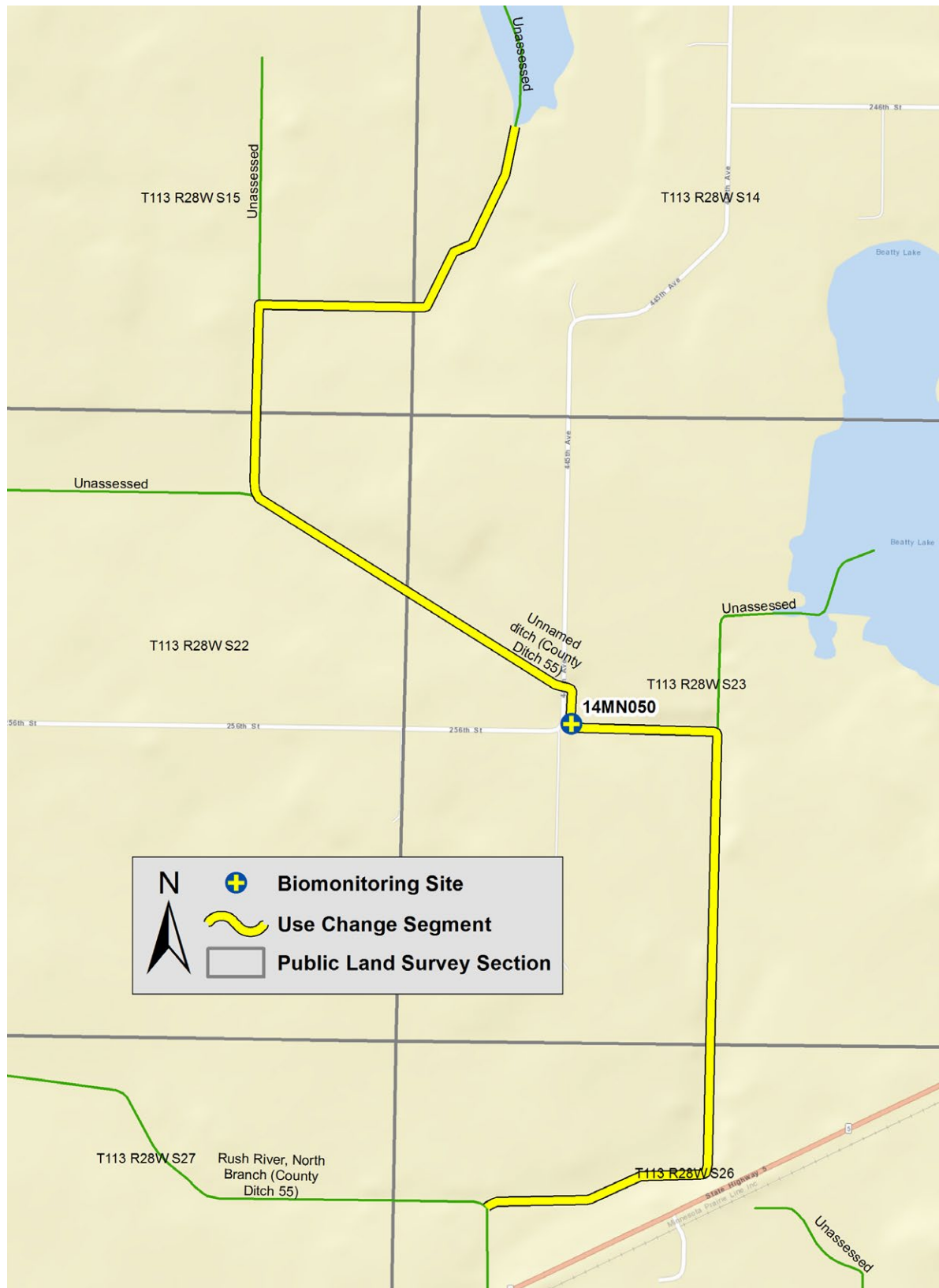
Minnesota River - Lower (07020012)



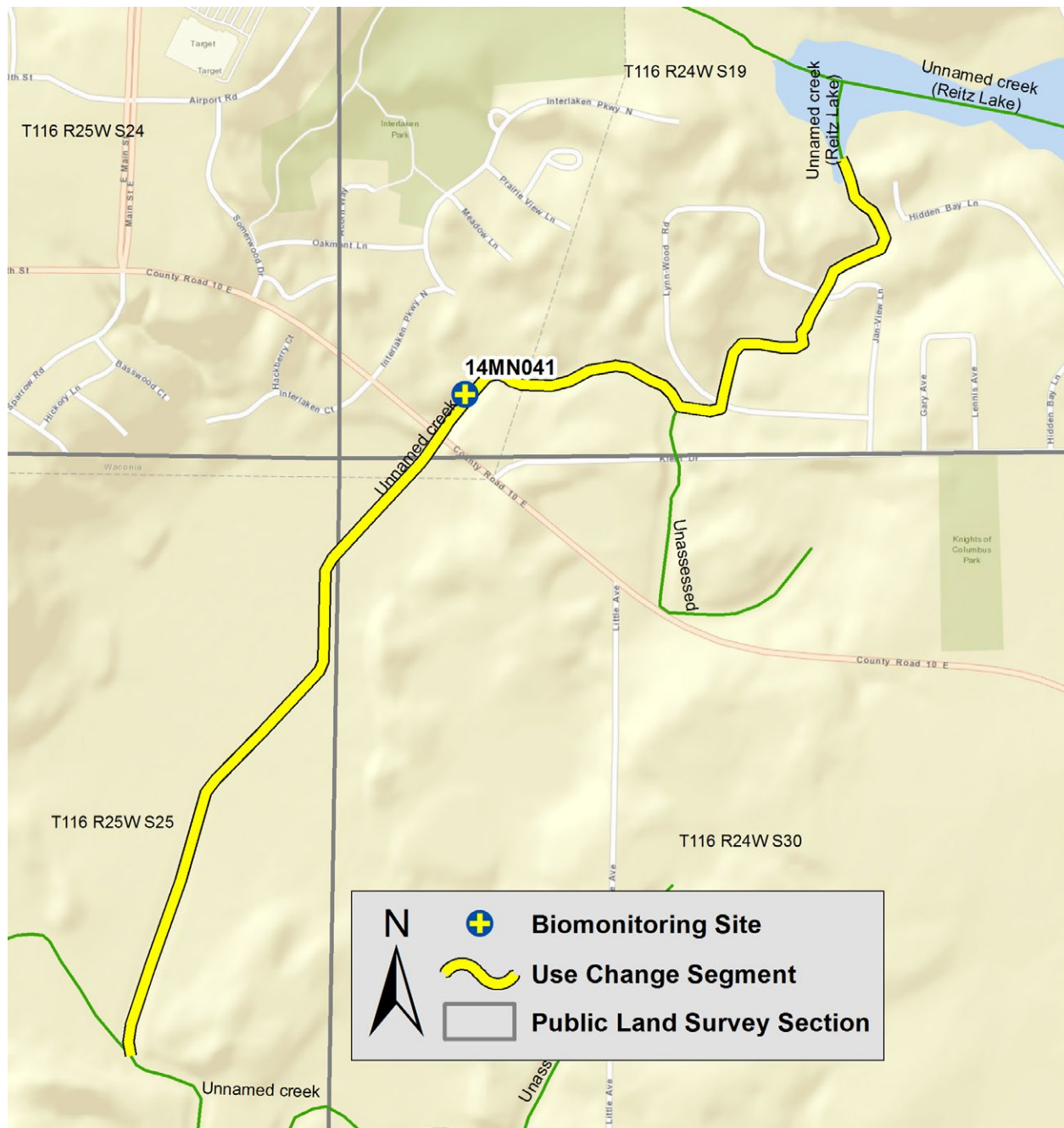
Unnamed creek (County Ditch 13) (07020012-604)



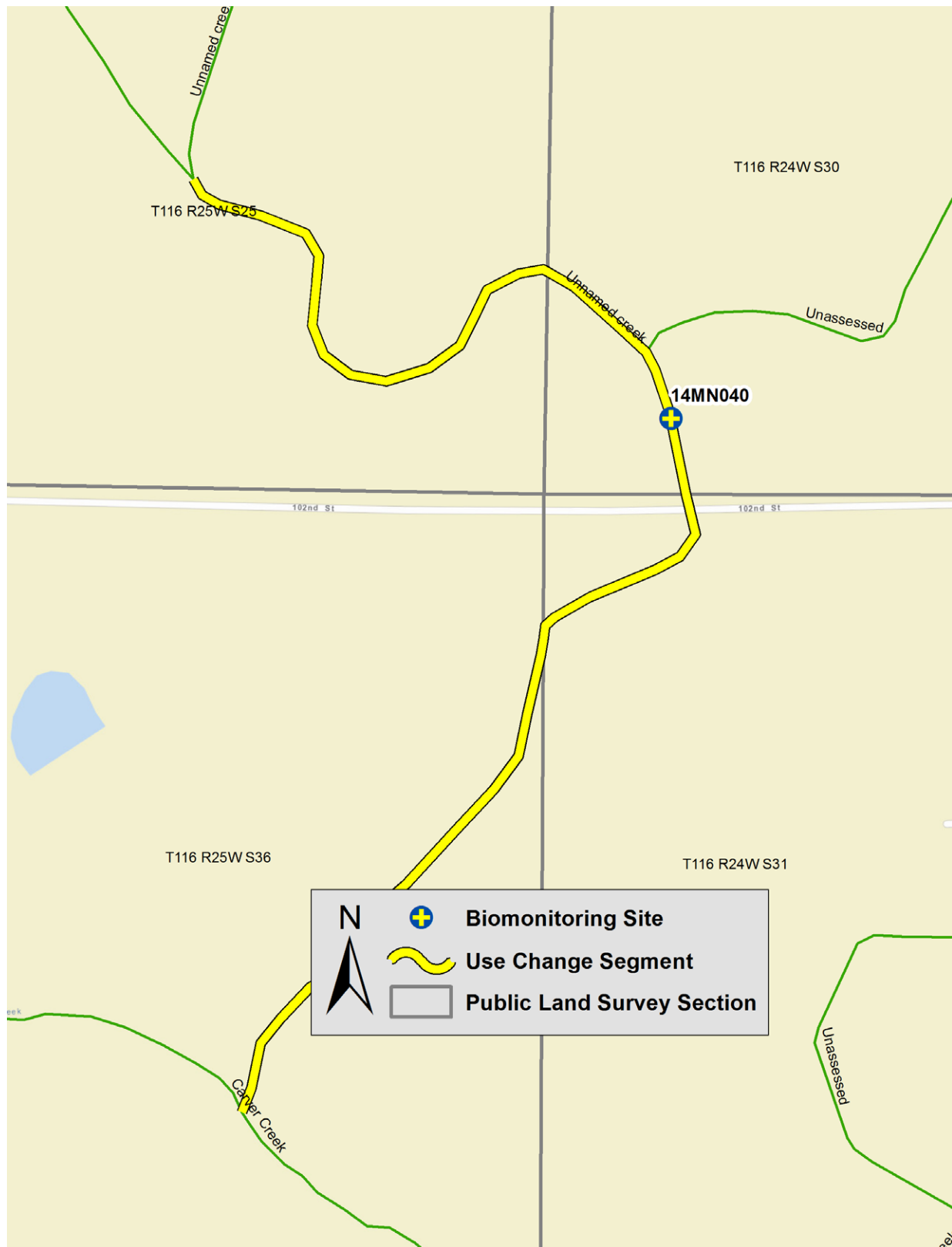
Unnamed ditch (County Ditch 55) (07020012-610)



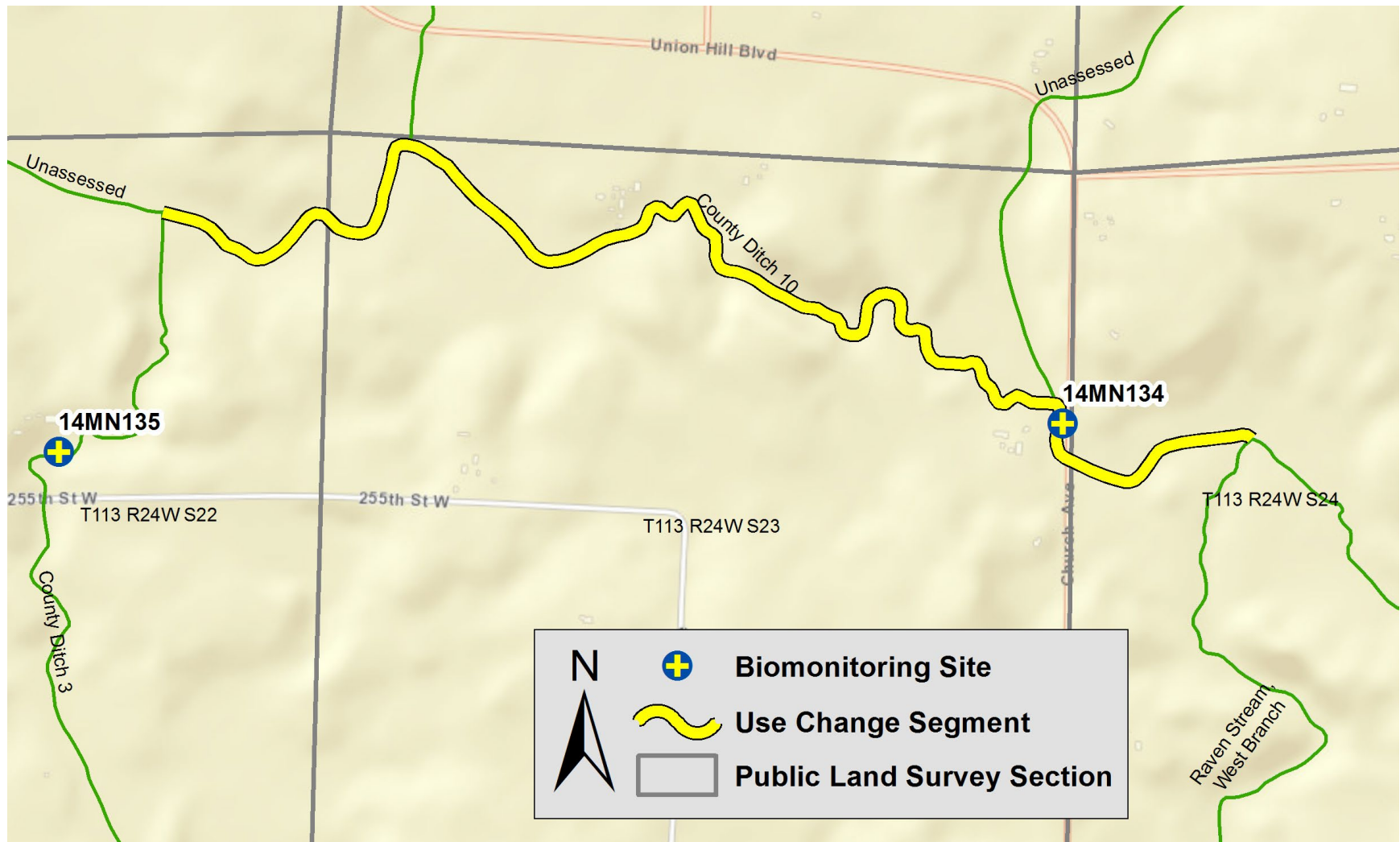
Unnamed creek (07020012-621)



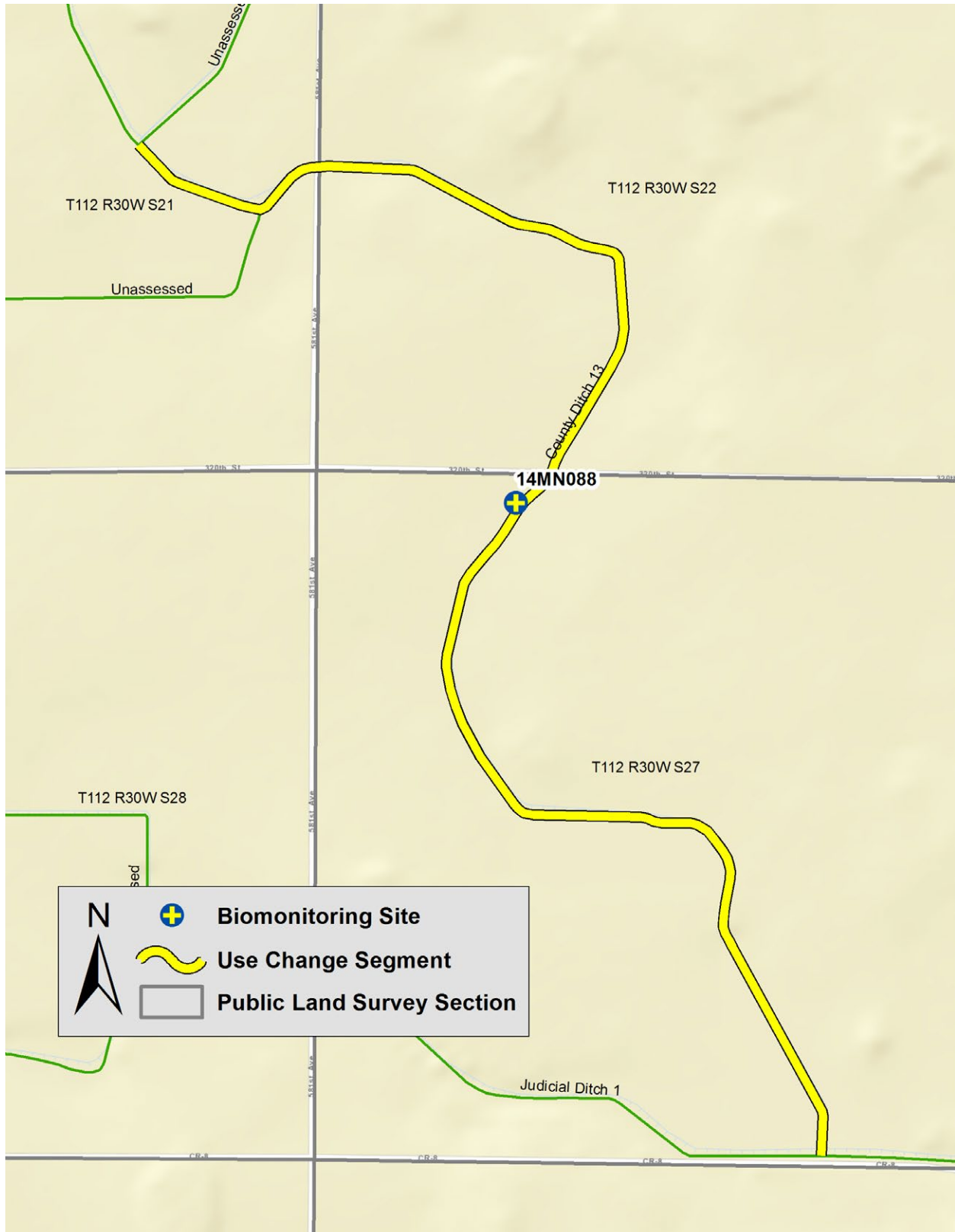
Unnamed creek (07020012-622)



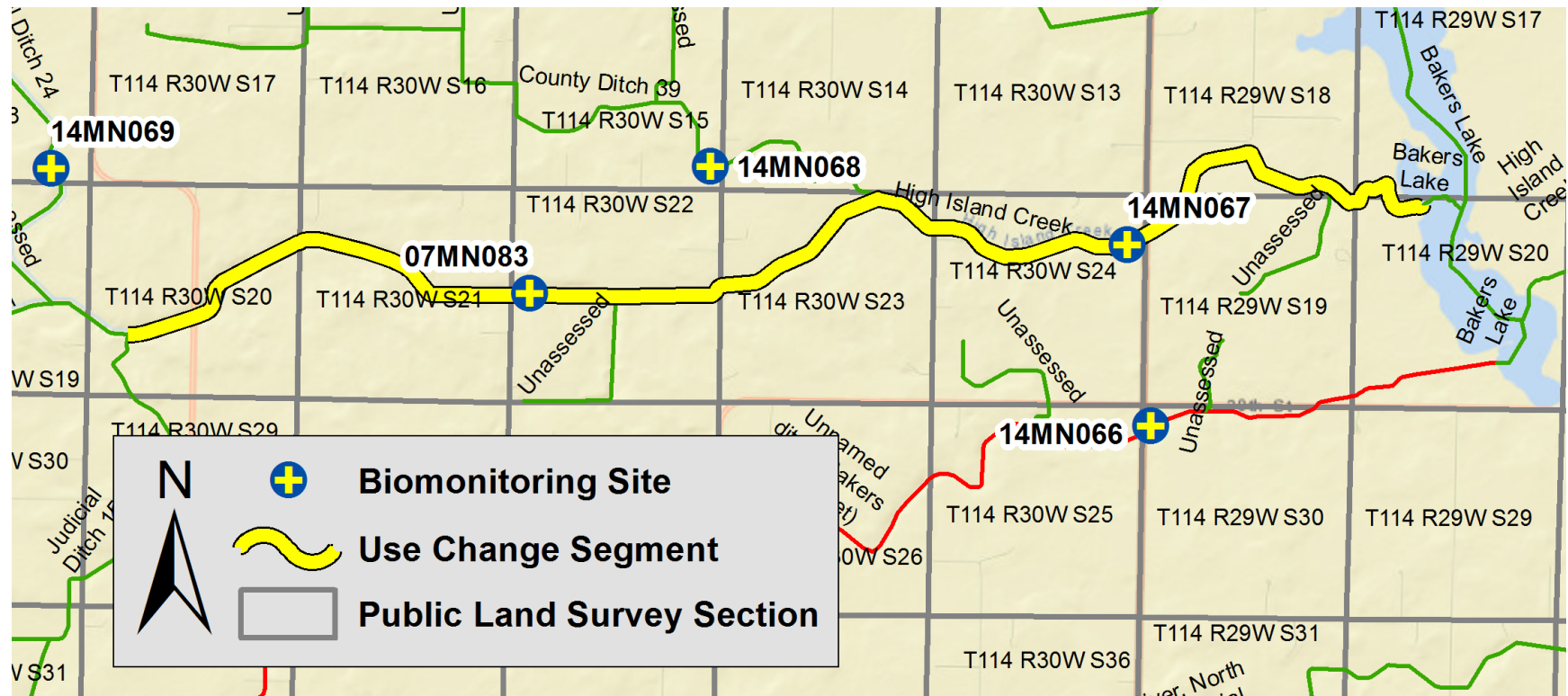
County Ditch 10 (07020012-628)



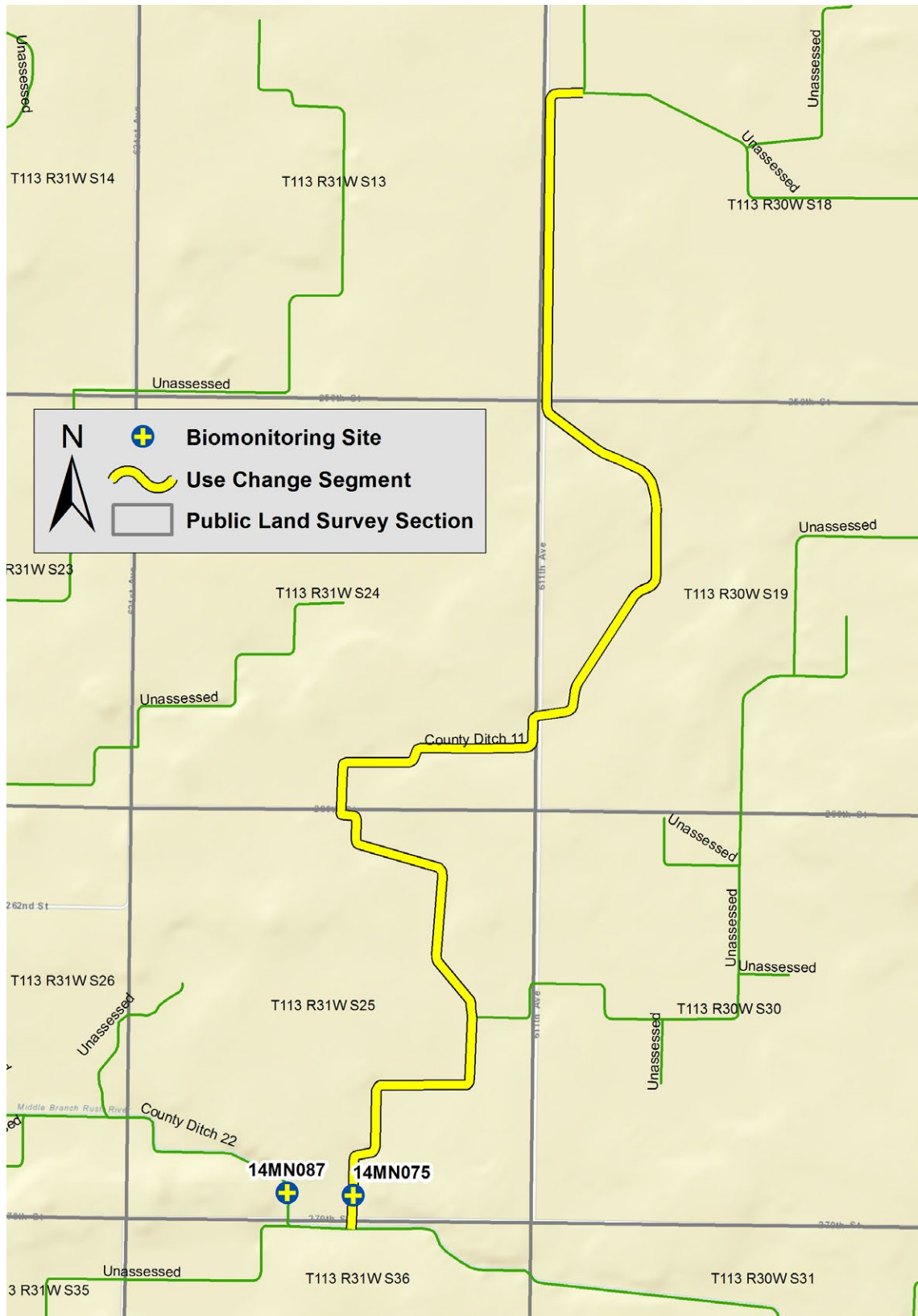
County Ditch 13 (07020012-636)



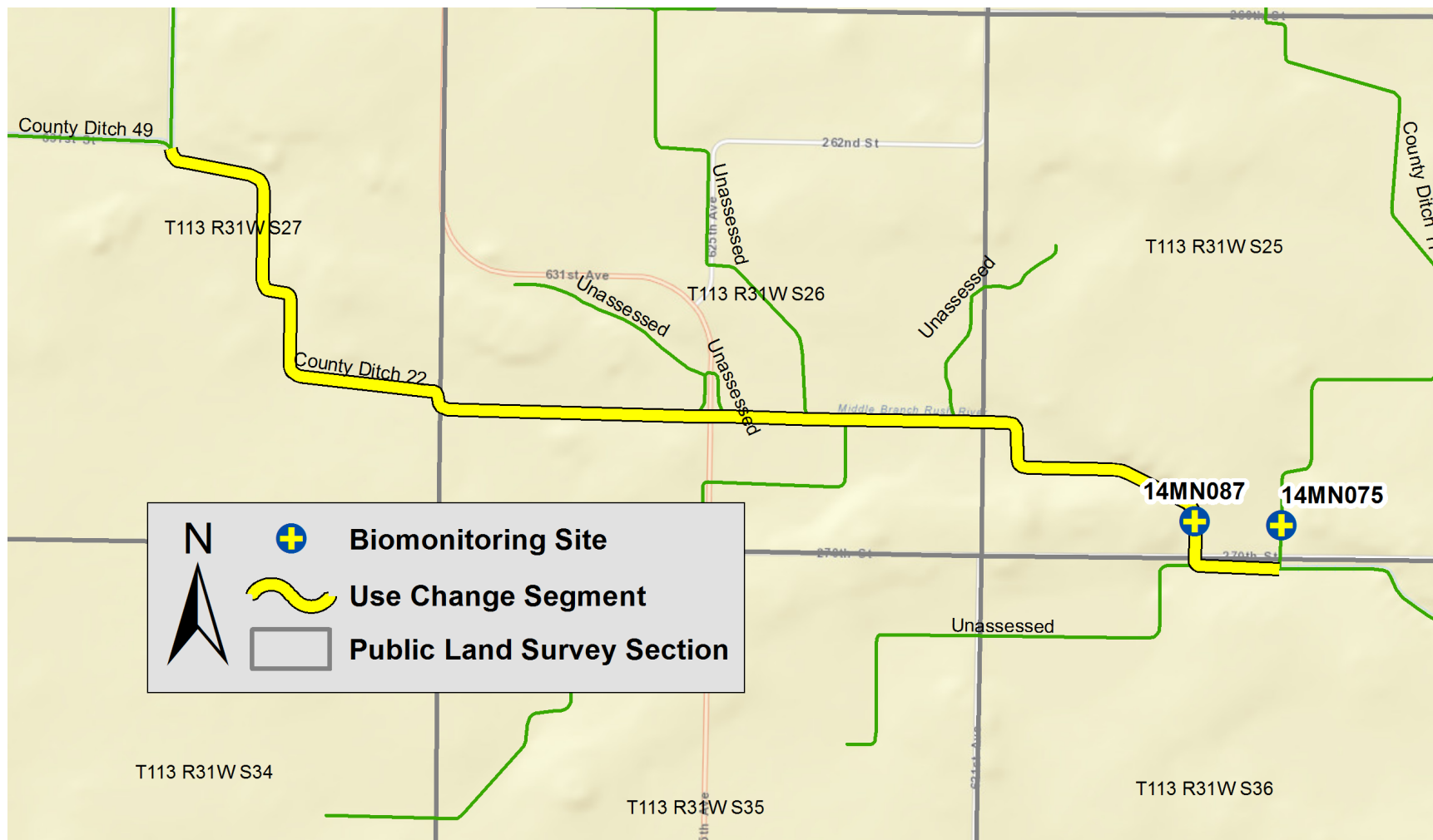
High Island Creek (07020012-653)



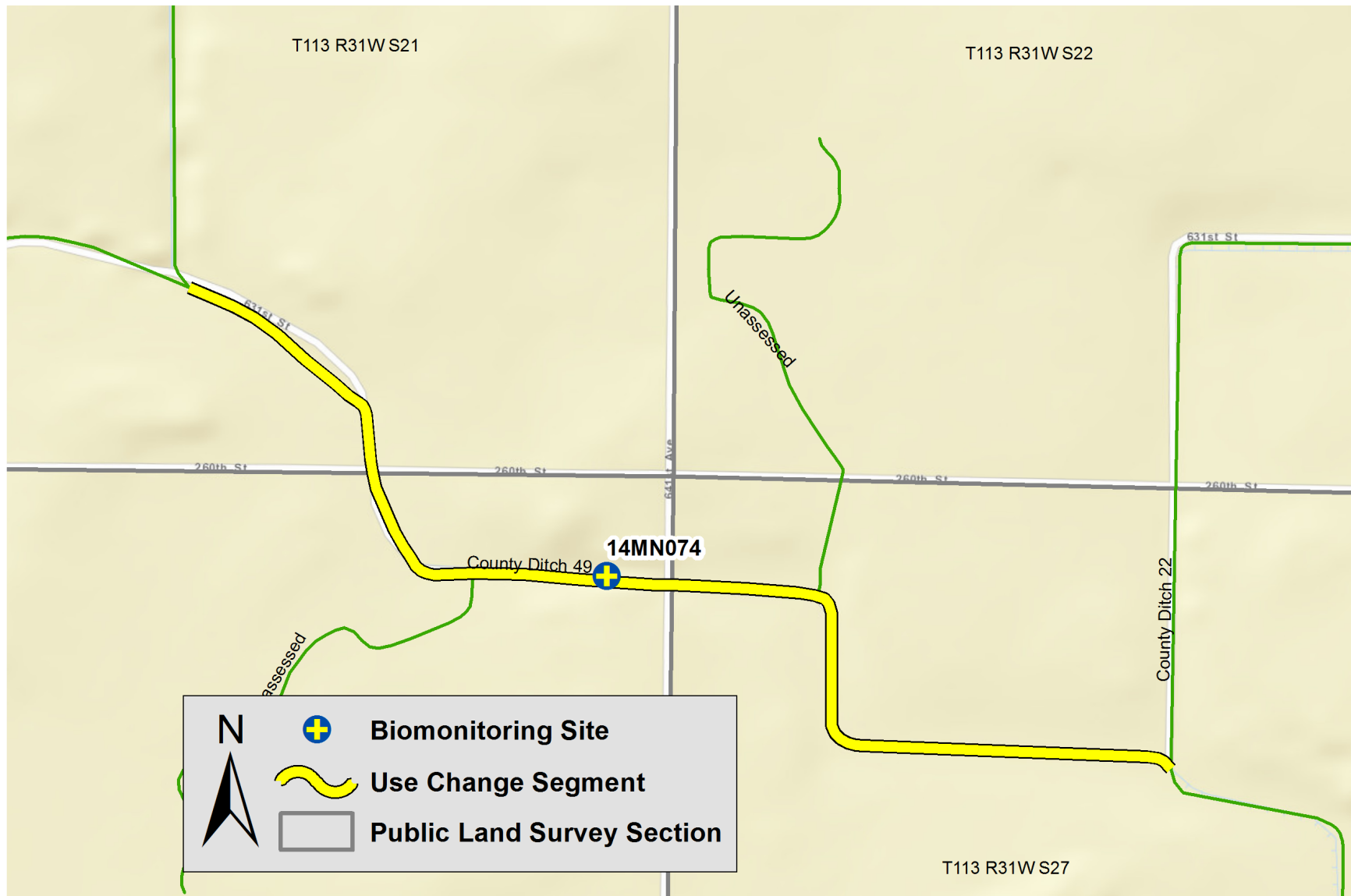
County Ditch 11 (07020012-674)



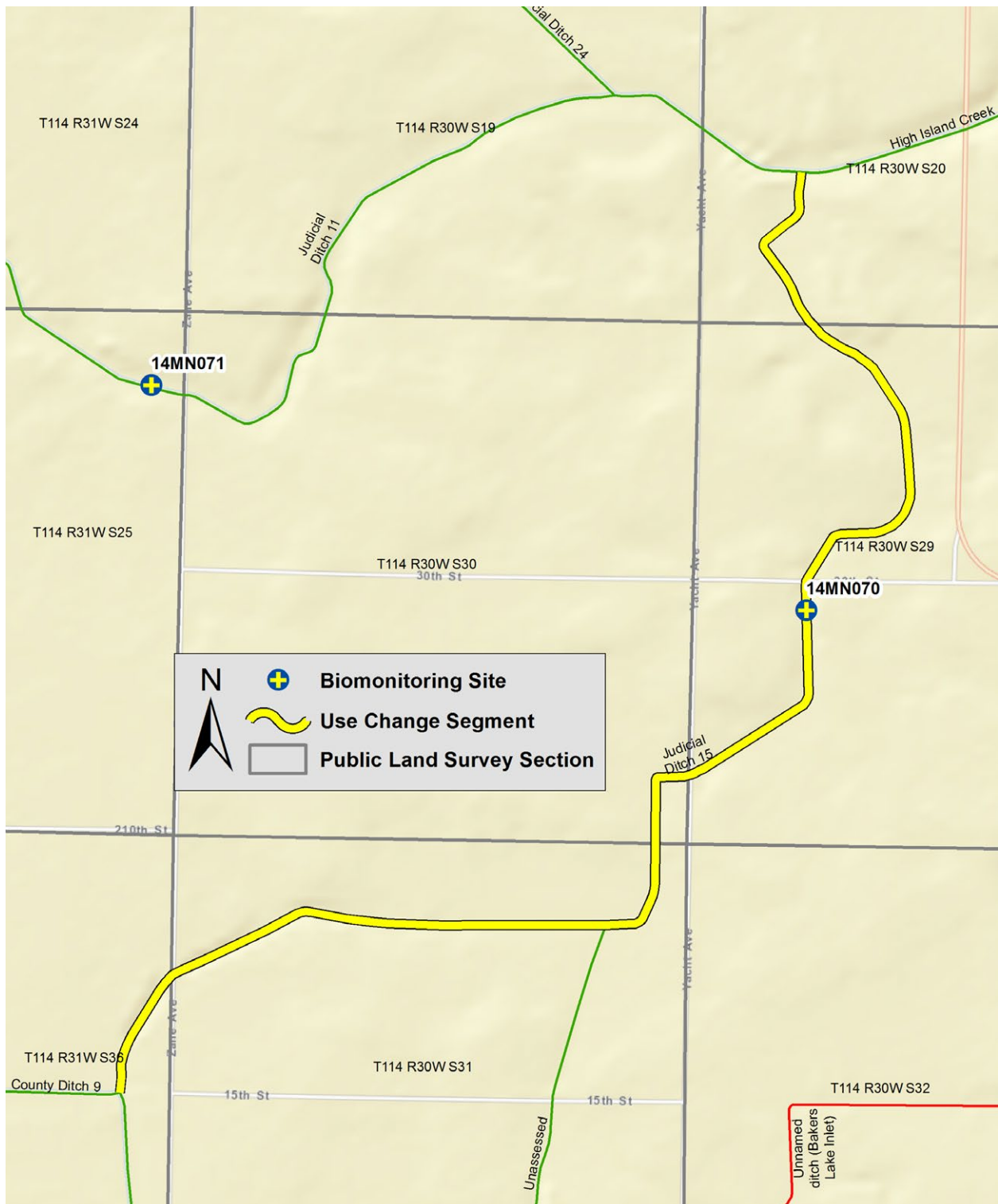
County Ditch 22 (07020012-675)



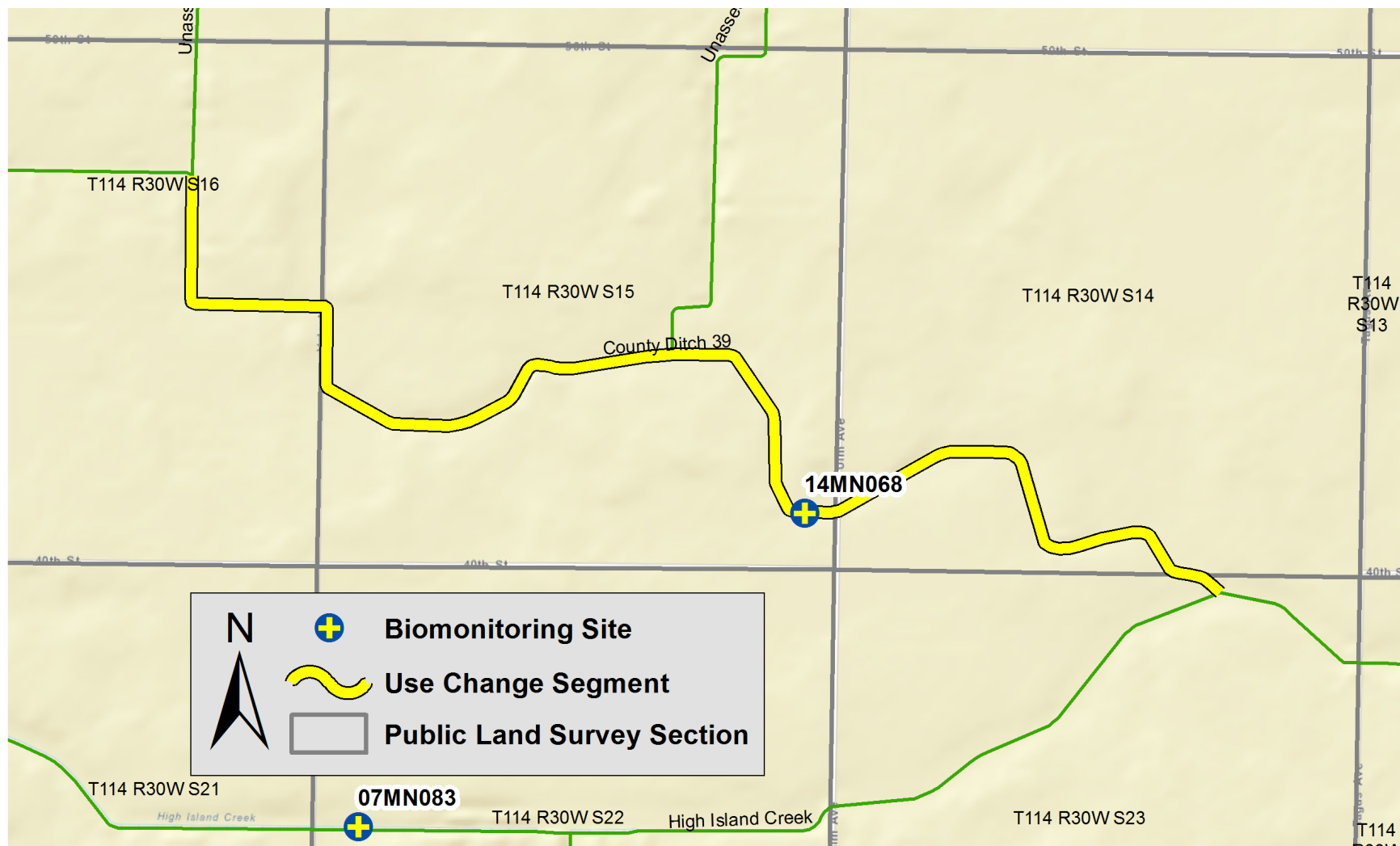
County Ditch 49 (07020012-677)



Judicial Ditch 15 (07020012-682)



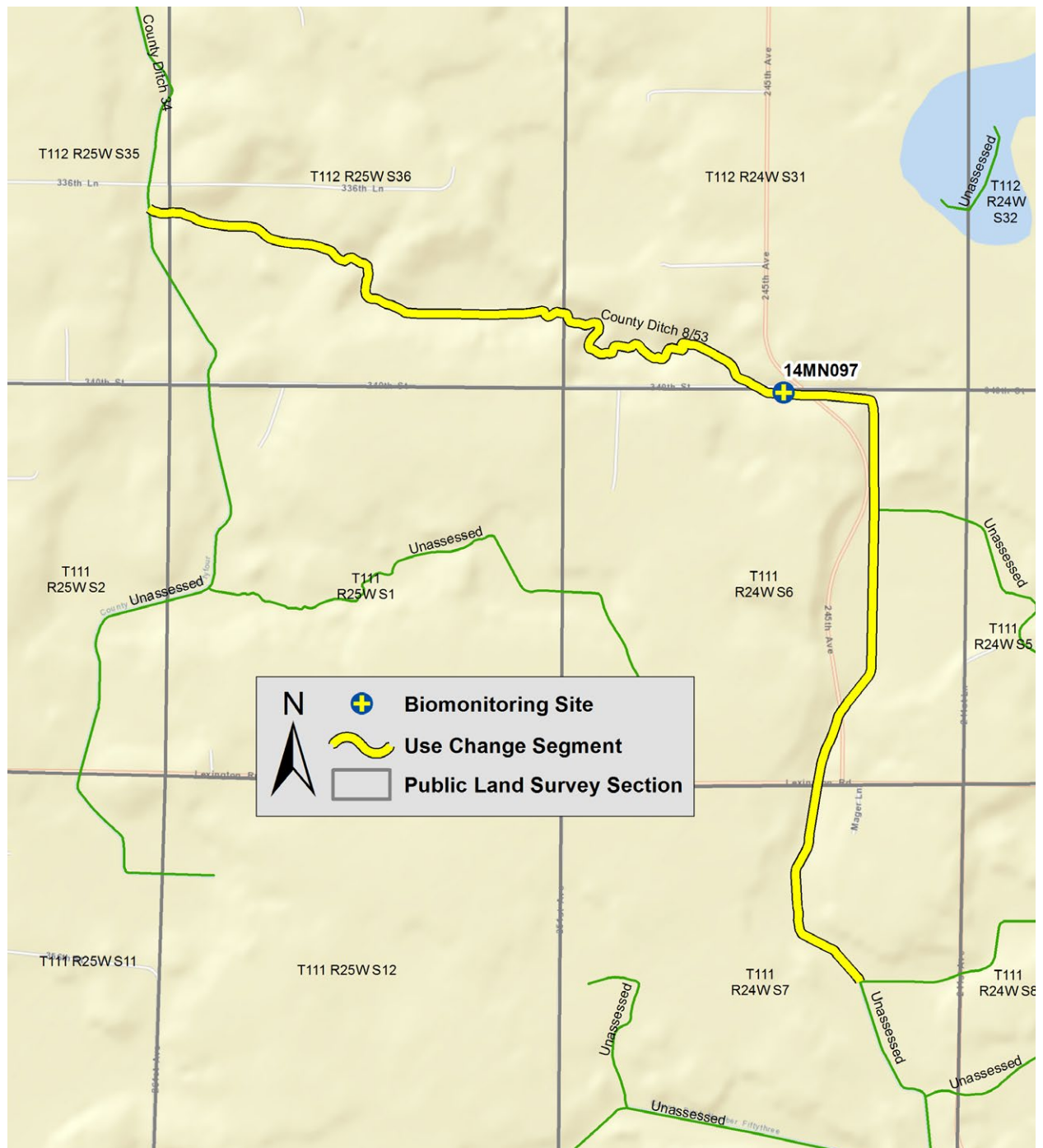
County Ditch 39 (07020012-683)



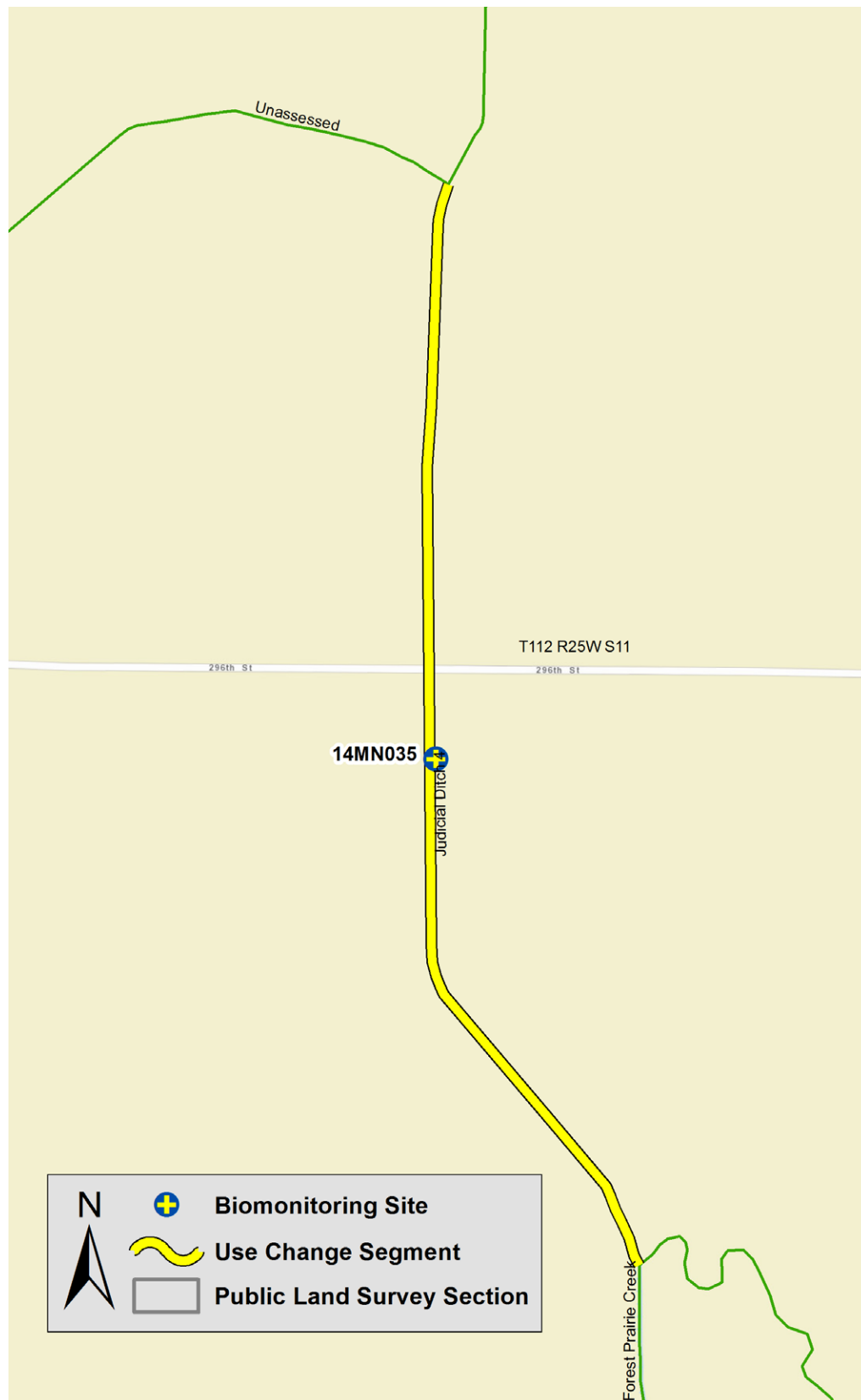
Unnamed creek (07020012-684)



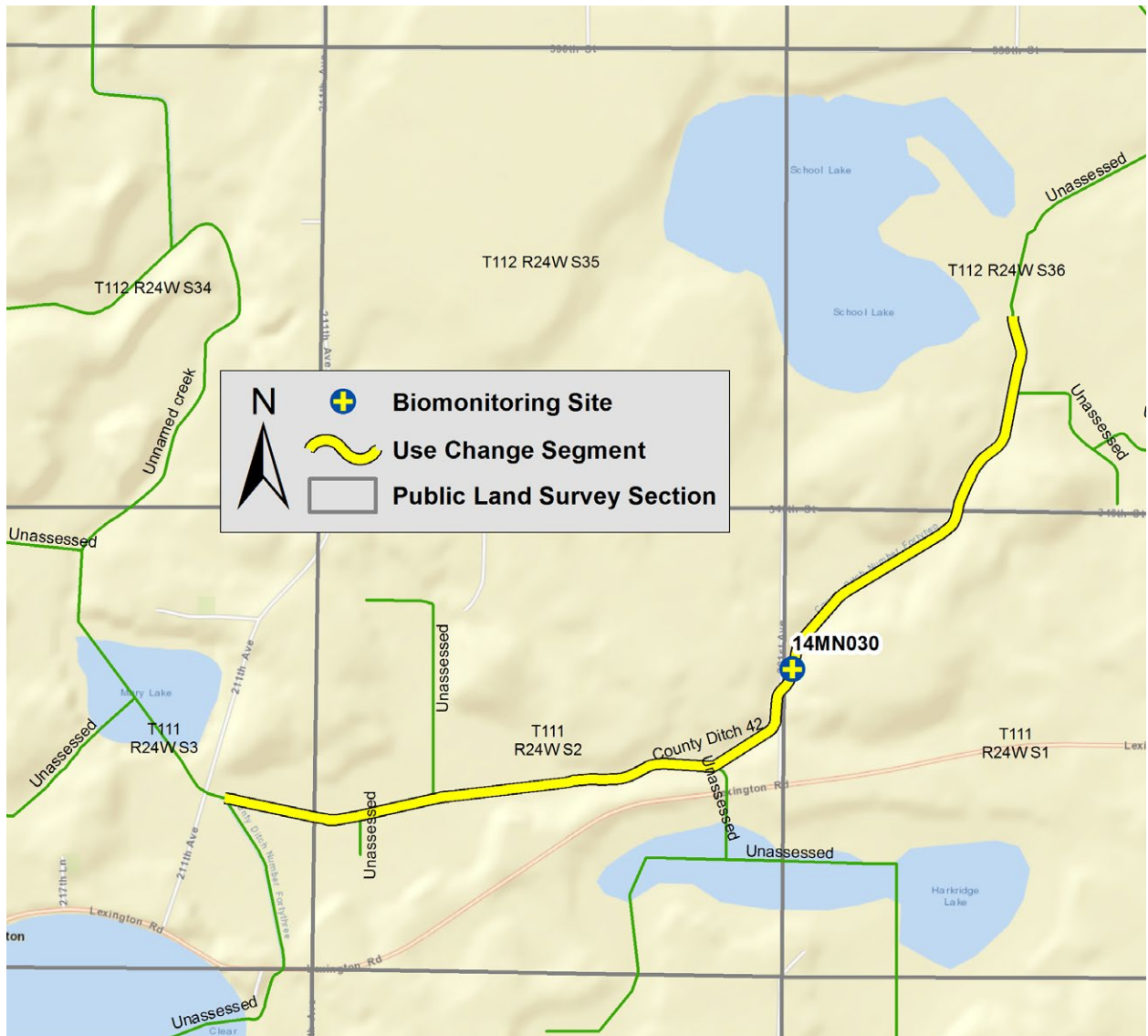
County Ditch 8/53 (07020012-766)



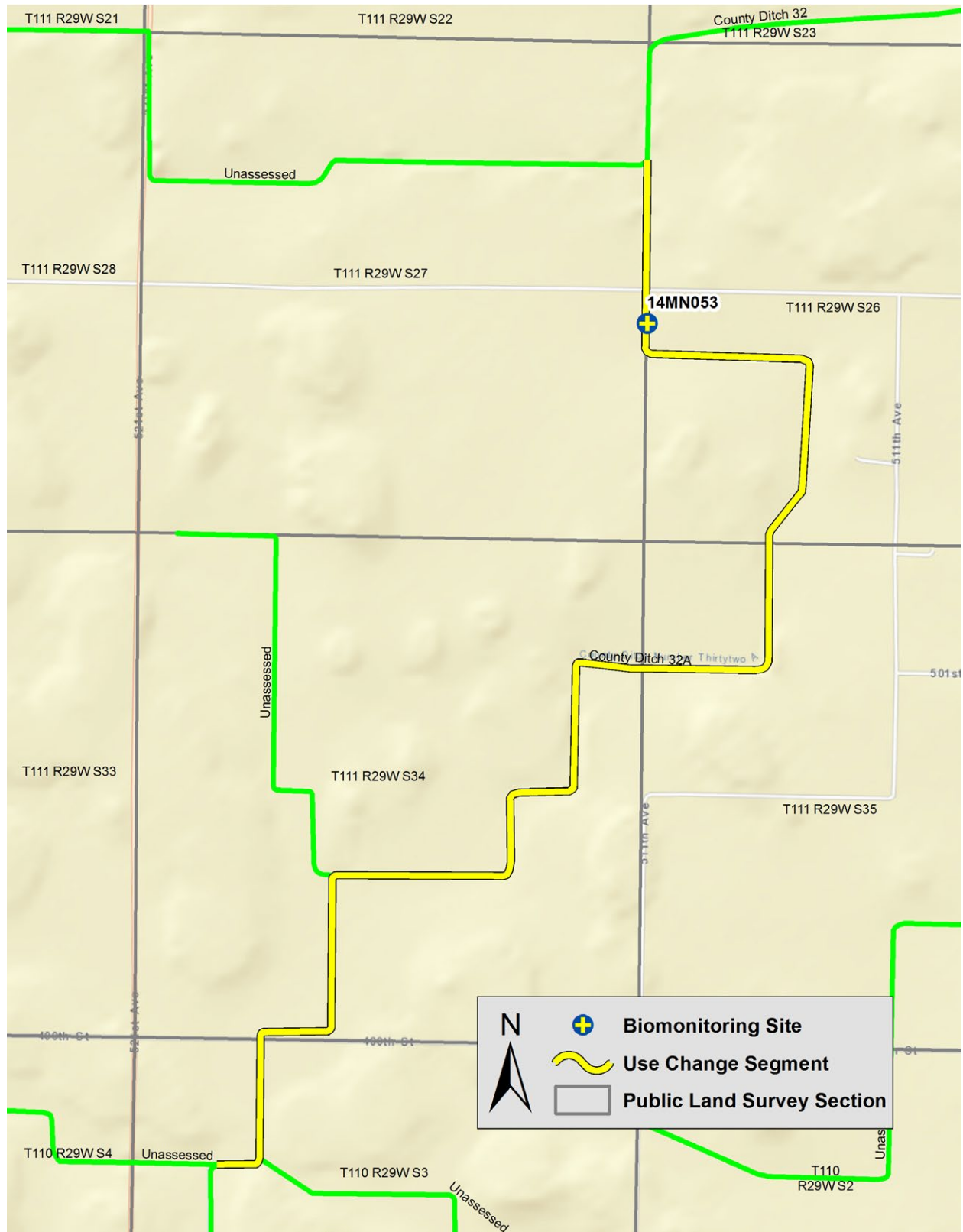
Judicial Ditch 4 (07020012-767)



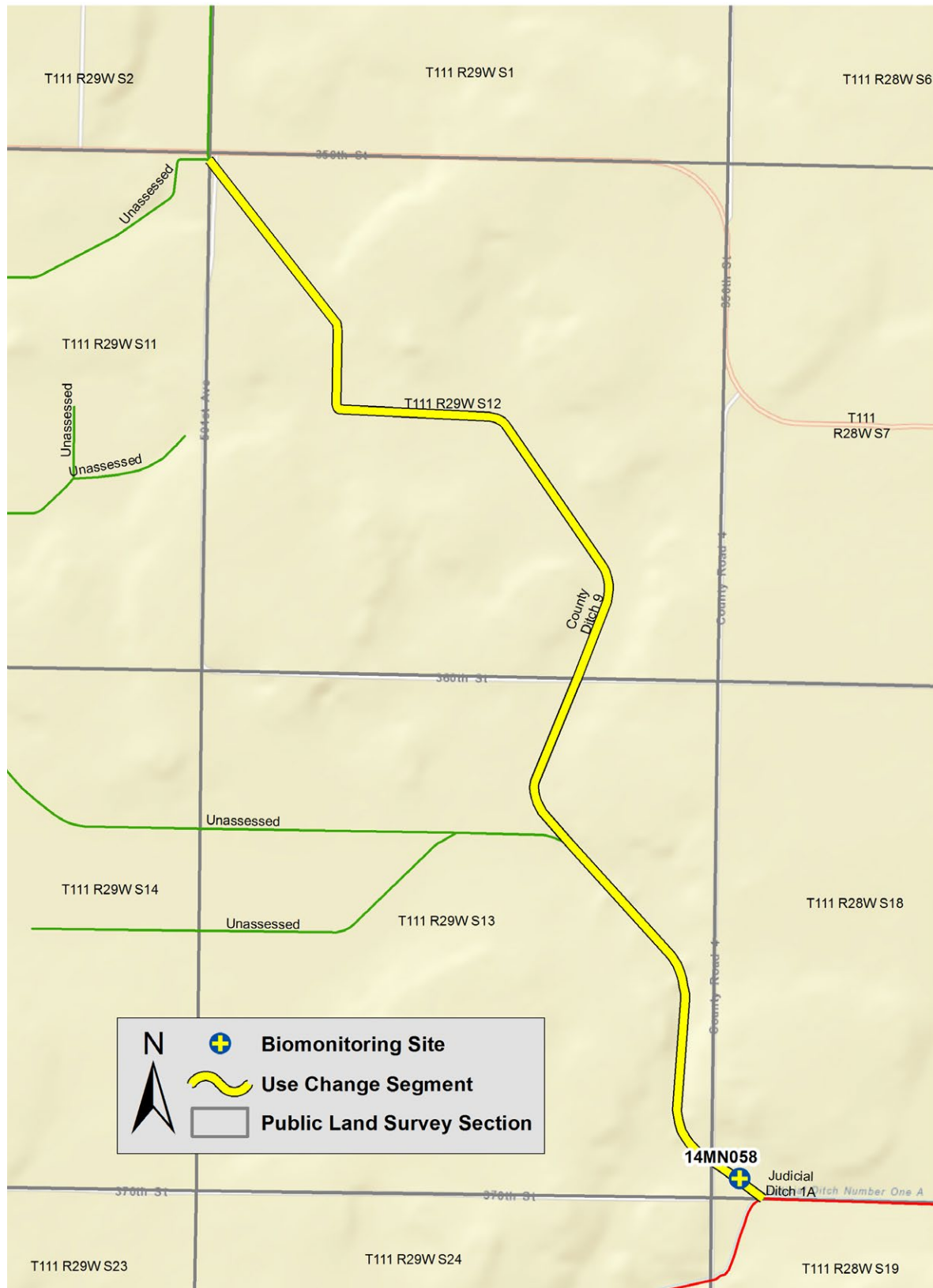
County Ditch 42 (07020012-772)



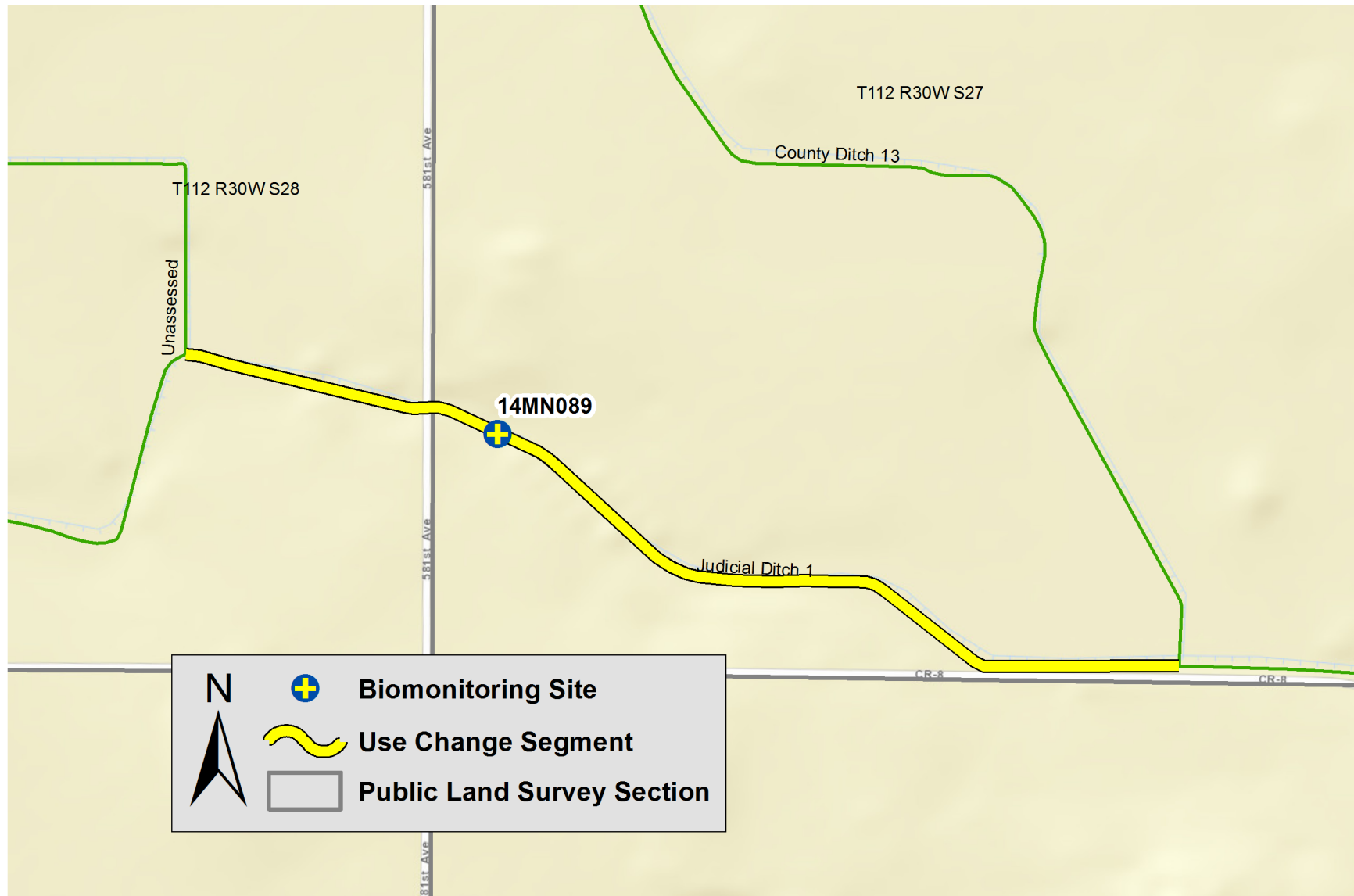
County Ditch 32A (07020012-783)



County Ditch 9 (07020012-784)



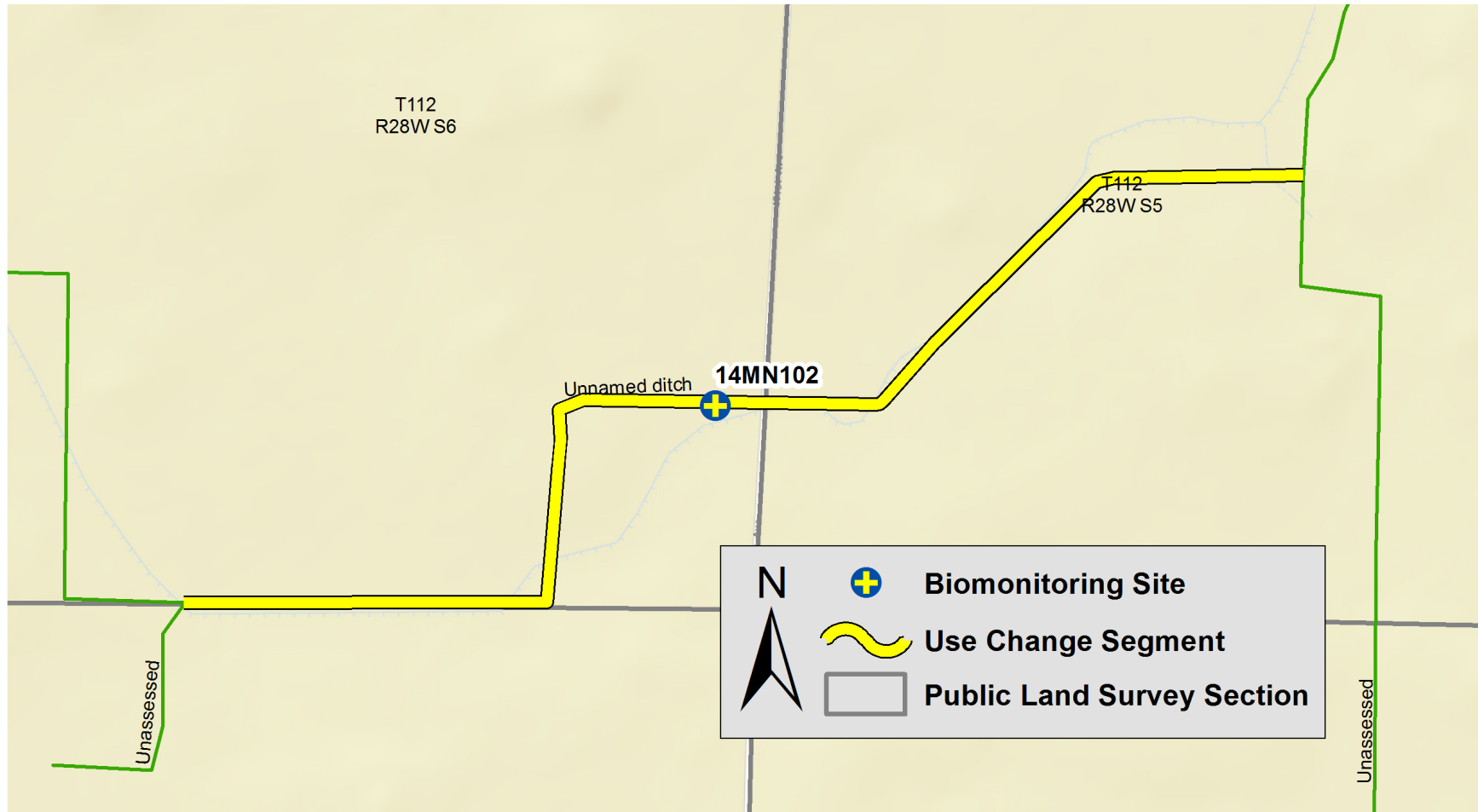
Judicial Ditch 1 (07020012-785)



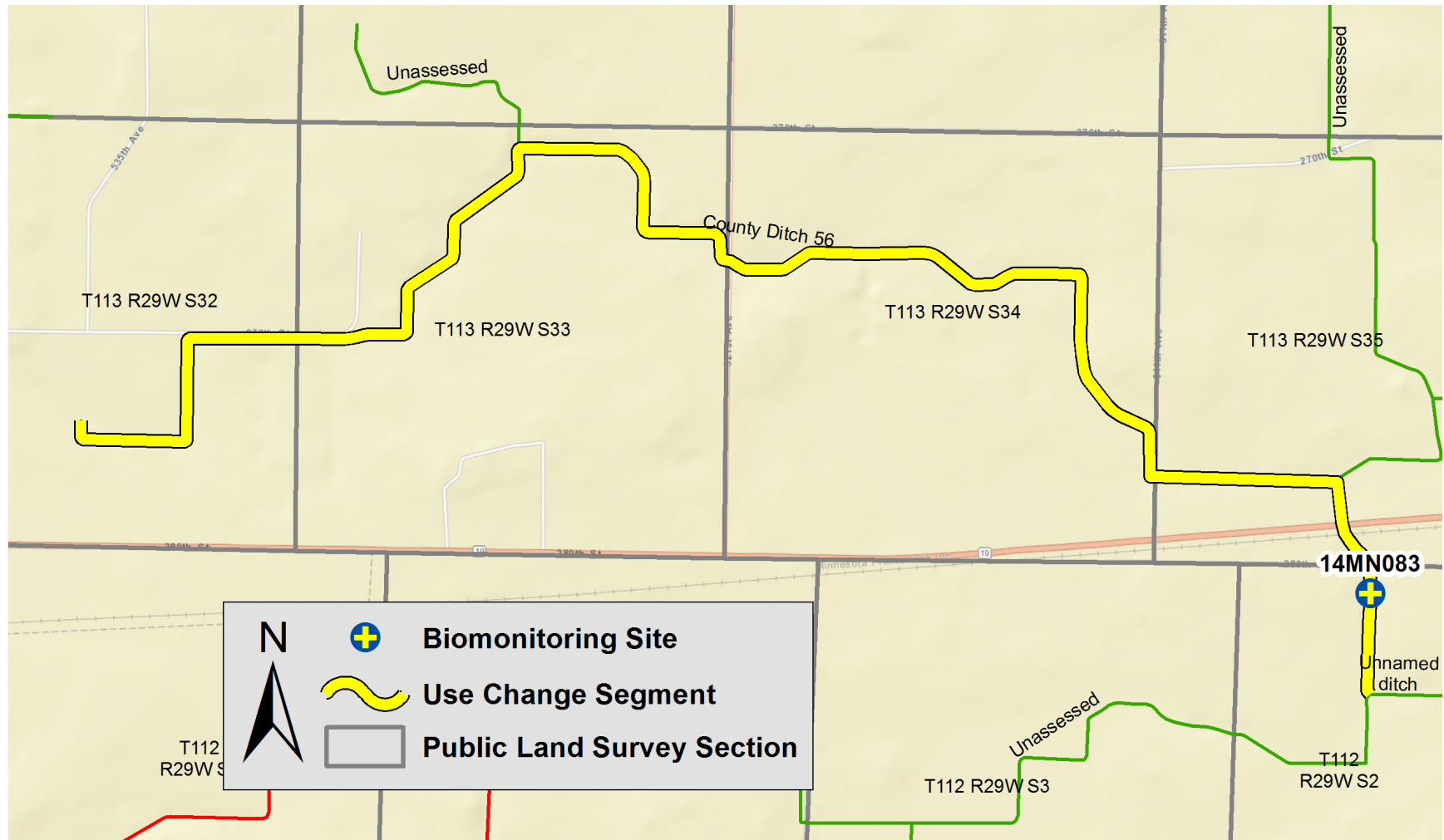
County Ditch 44 (07020012-786)



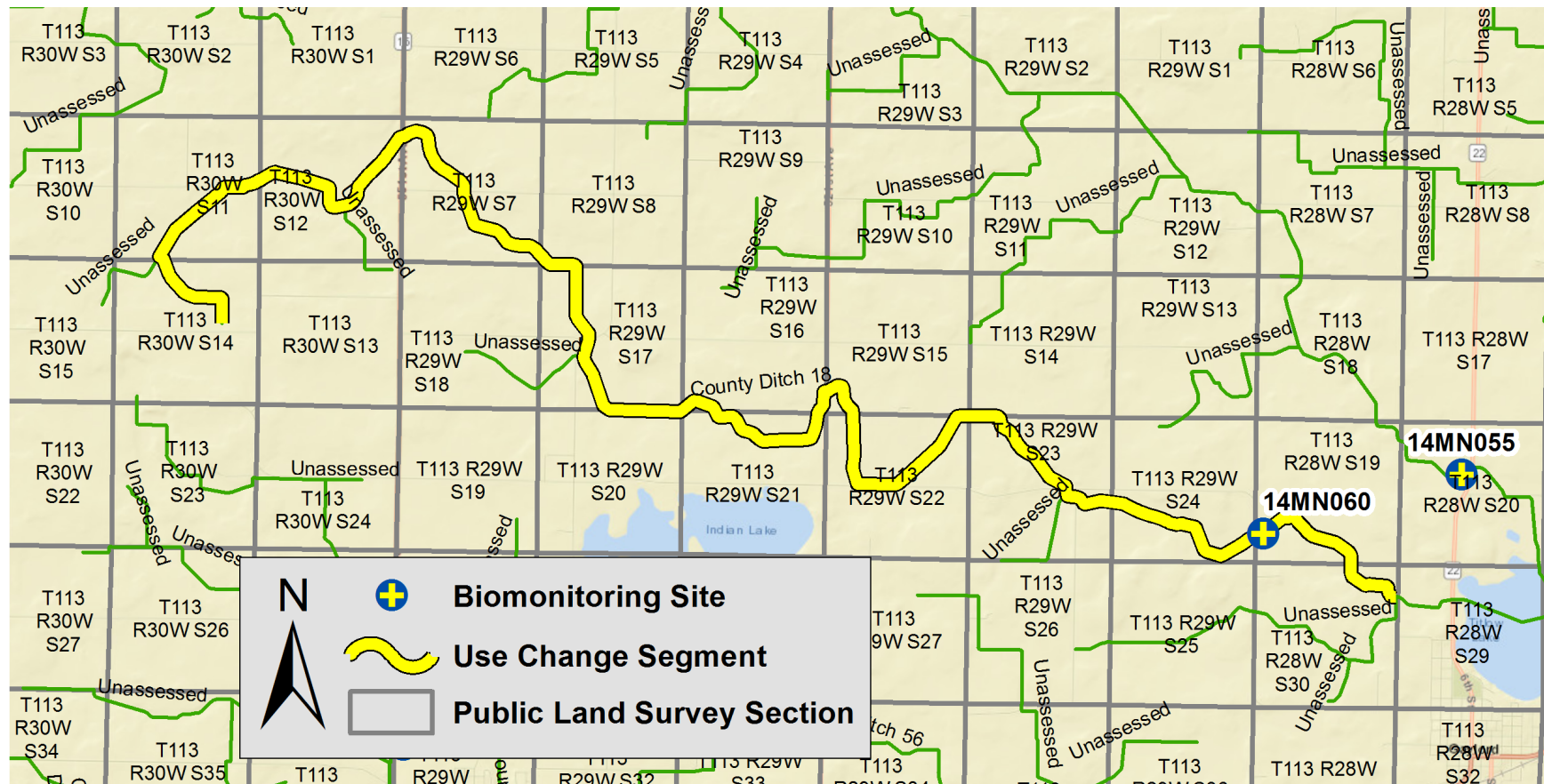
Unnamed ditch (07020012-788)



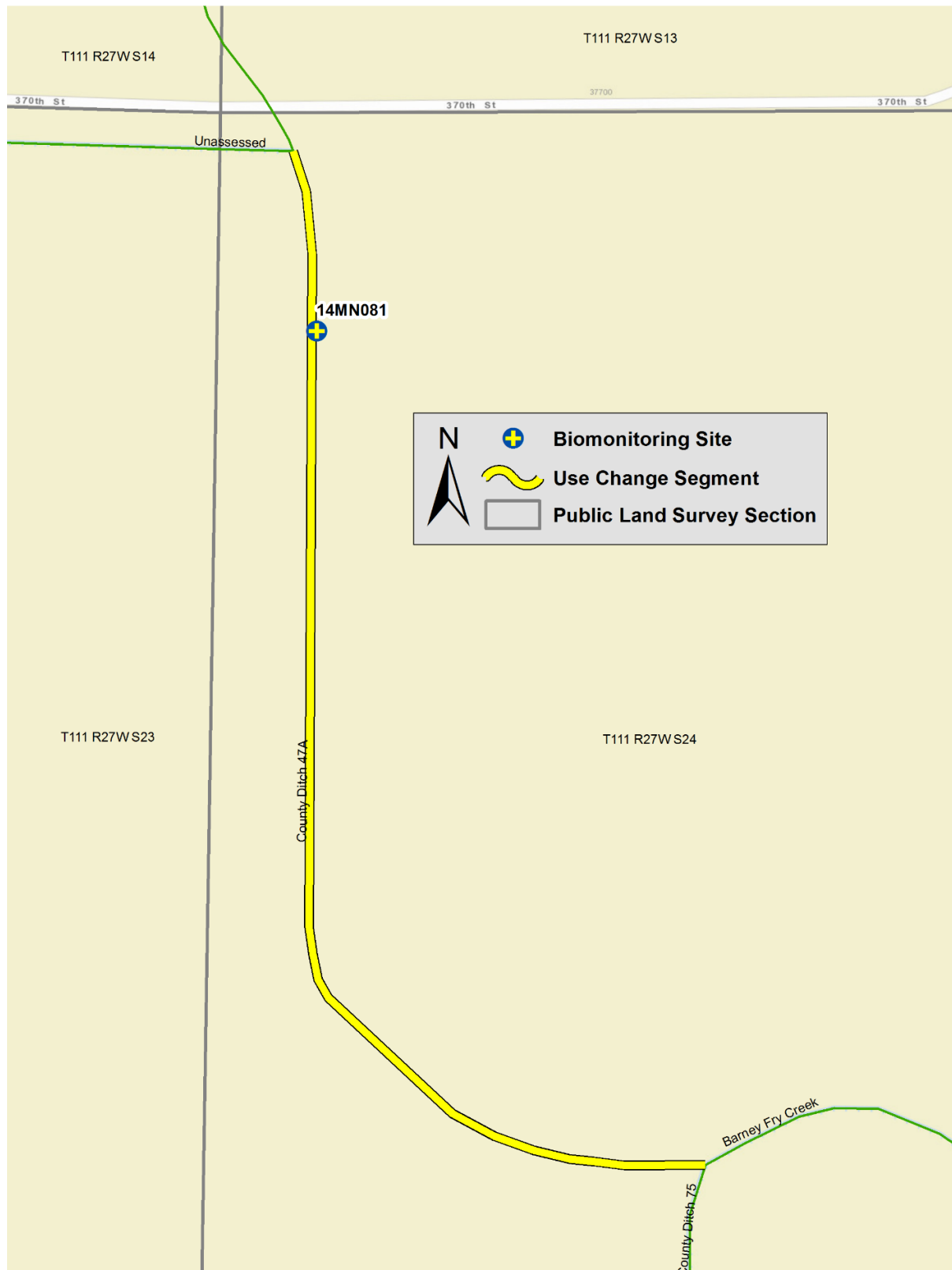
County Ditch 56 (07020012-790)



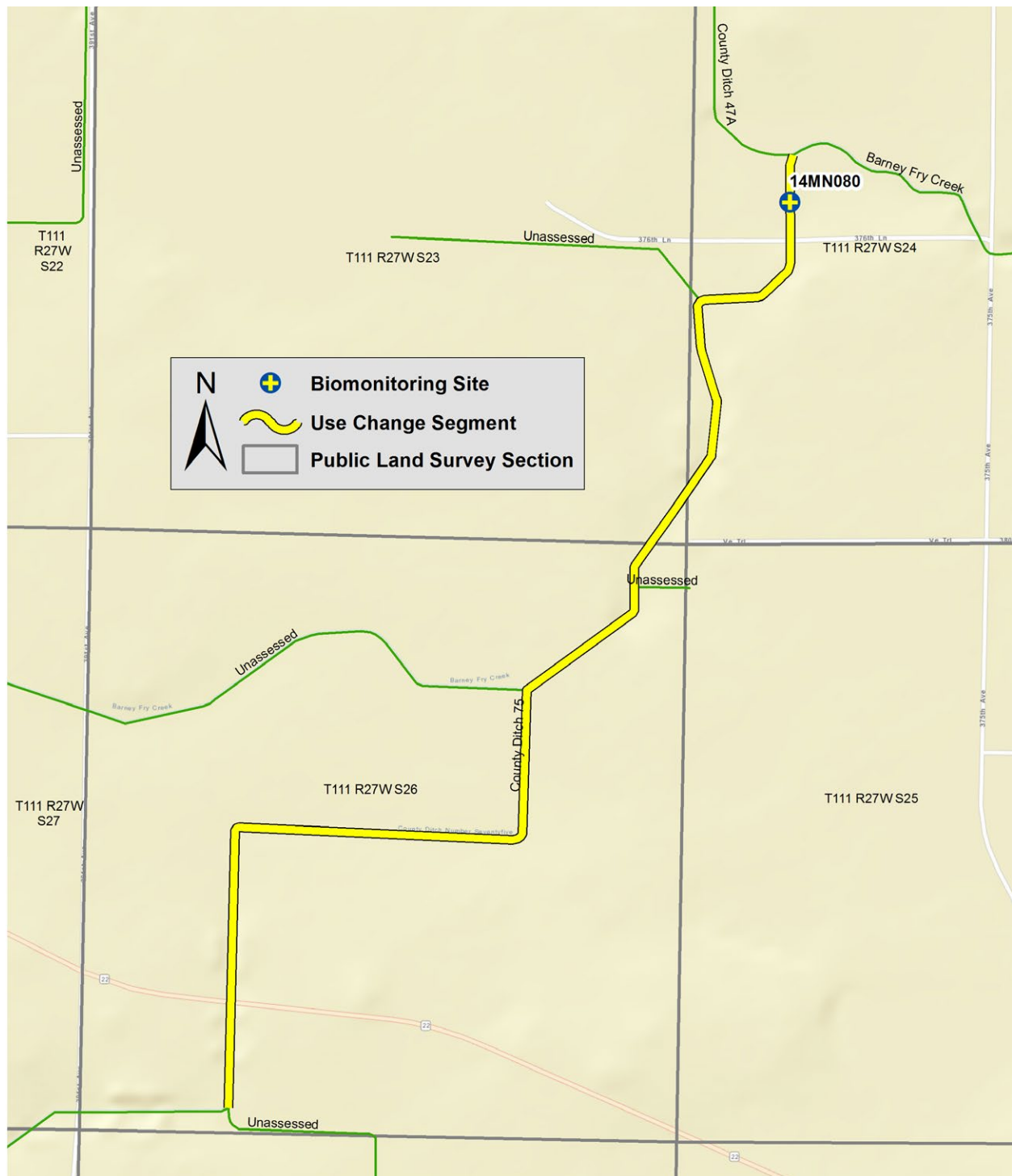
County Ditch 18 (07020012-791)



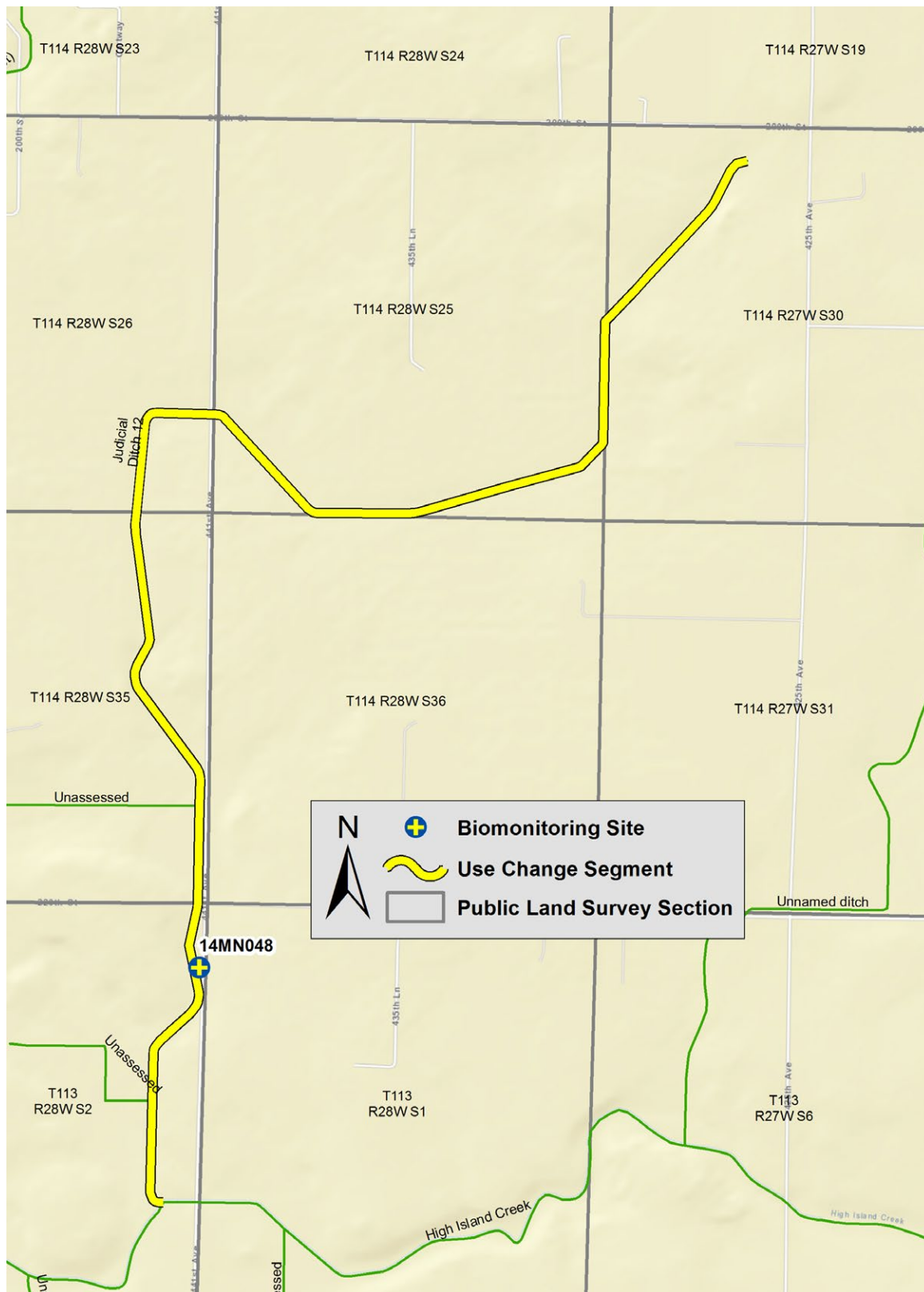
County Ditch 47A (07020012-792)



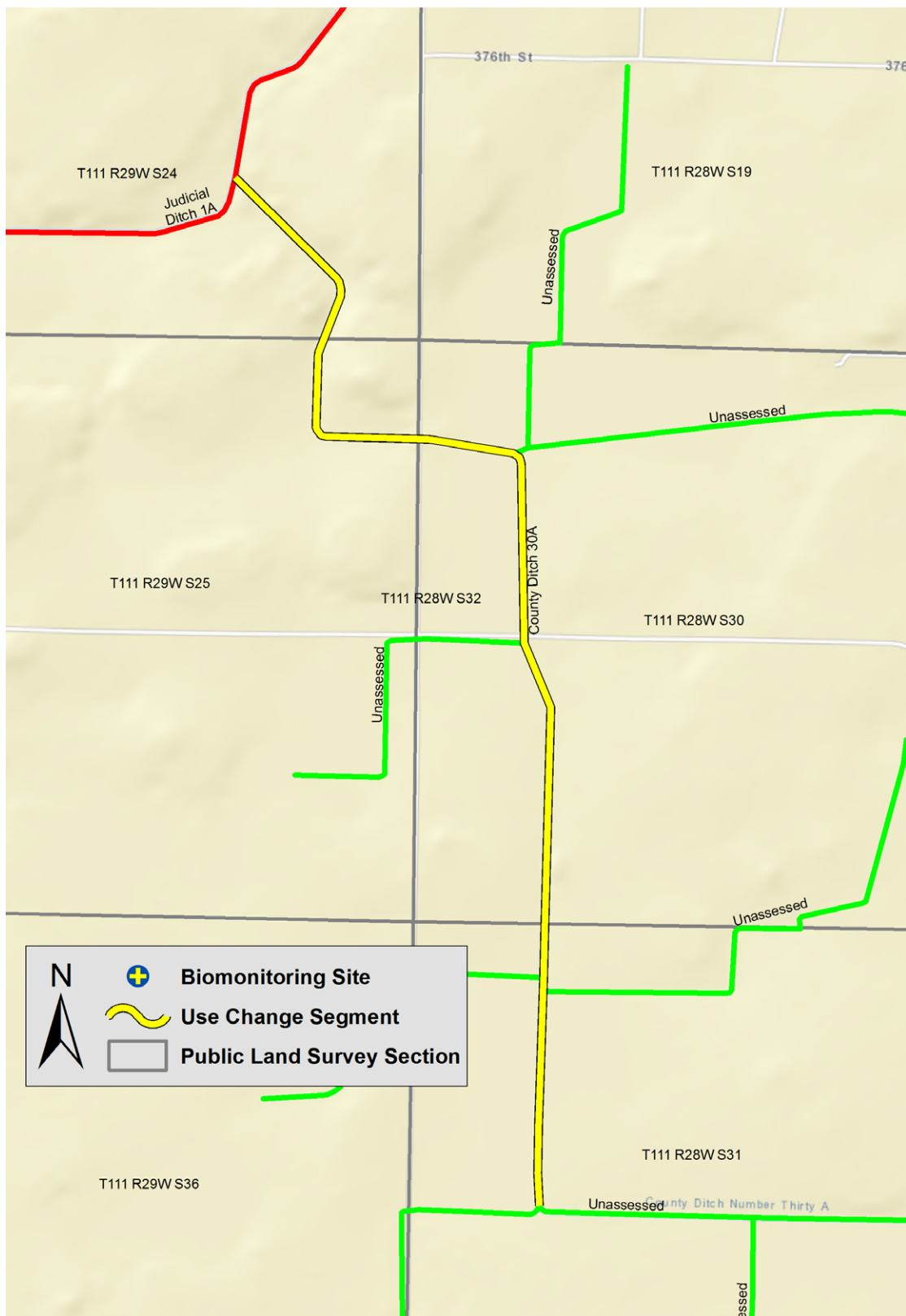
County Ditch 75 (07020012-793)



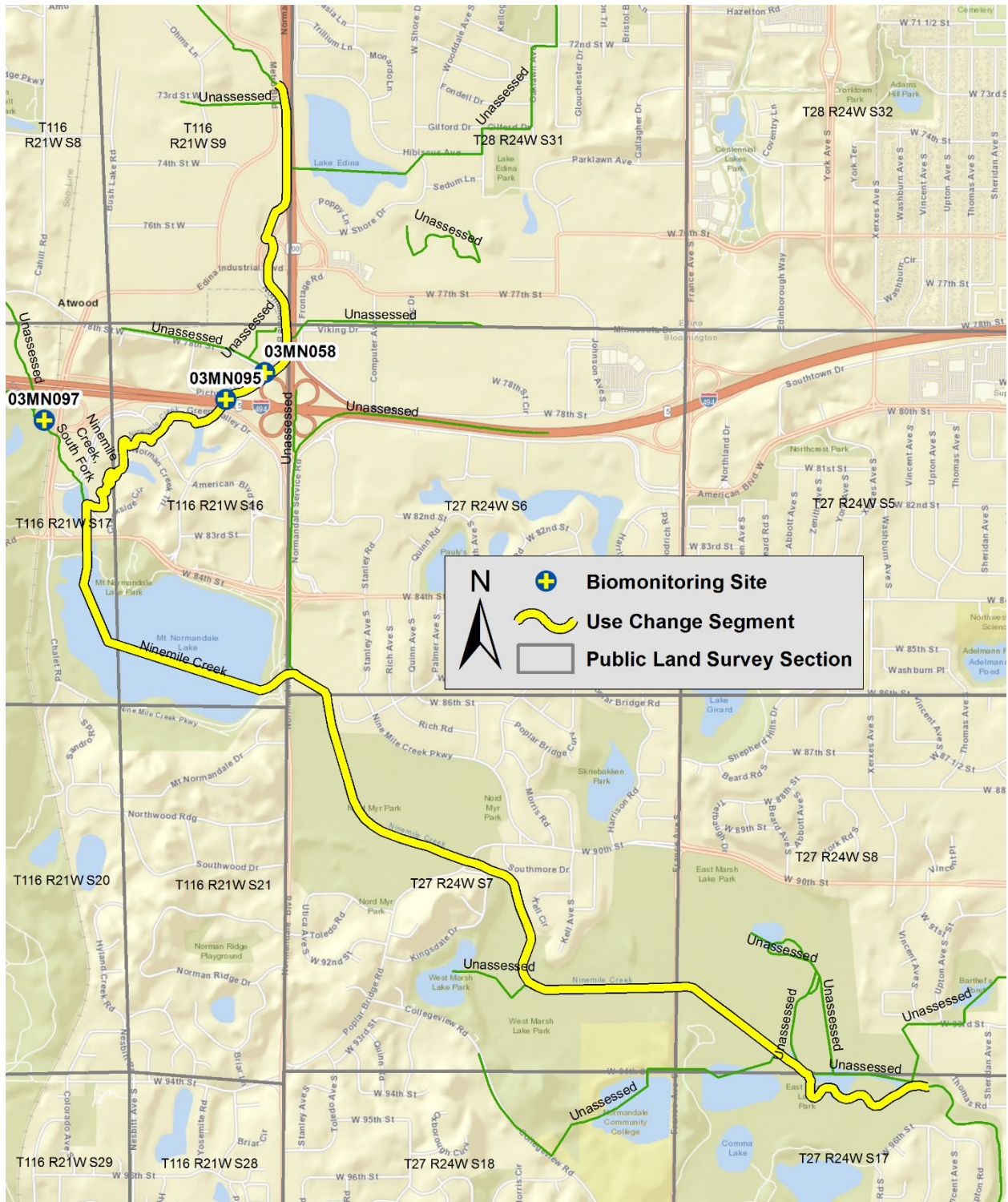
Judicial Ditch 12 (07020012-794)



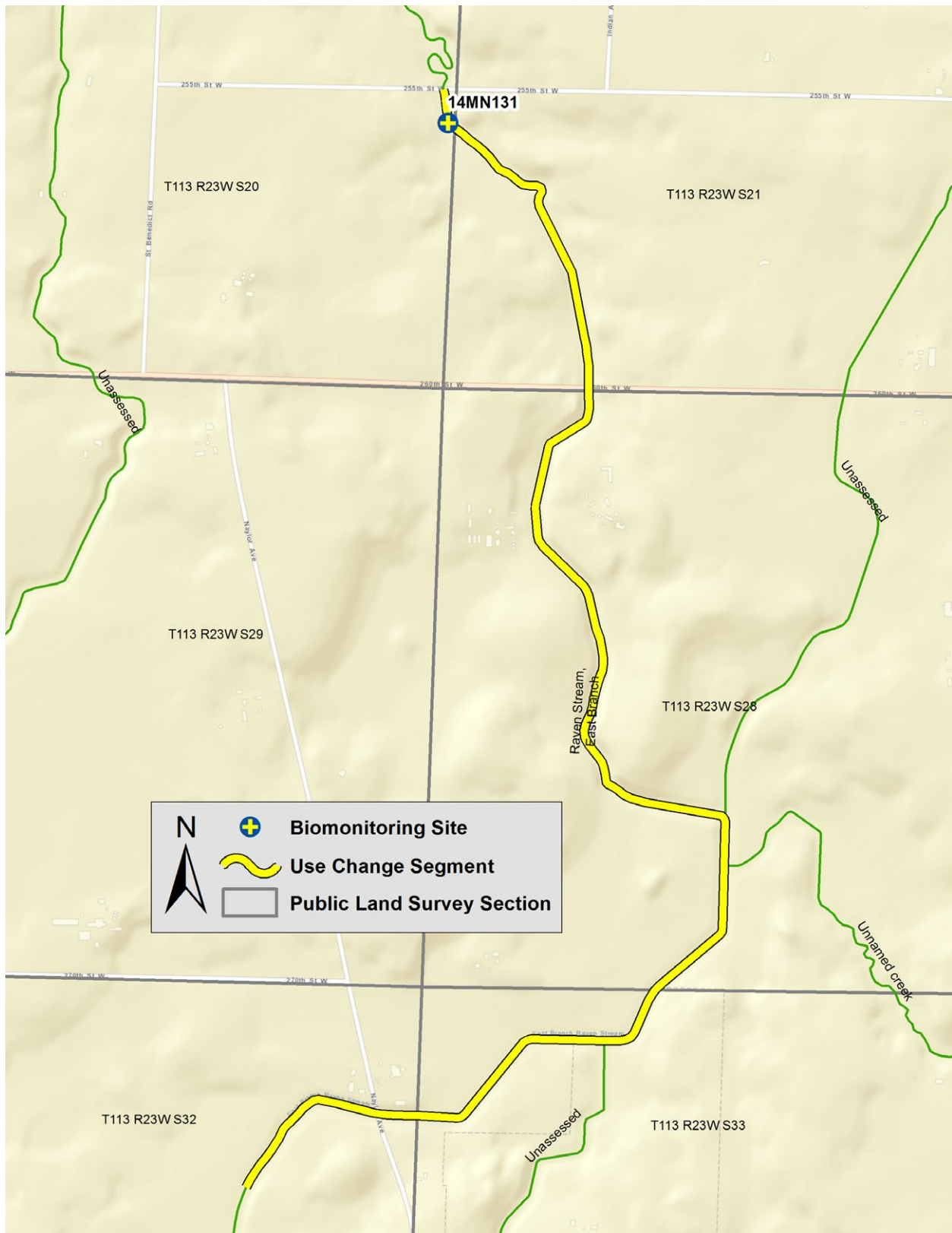
County Ditch 30A (07020012-801)



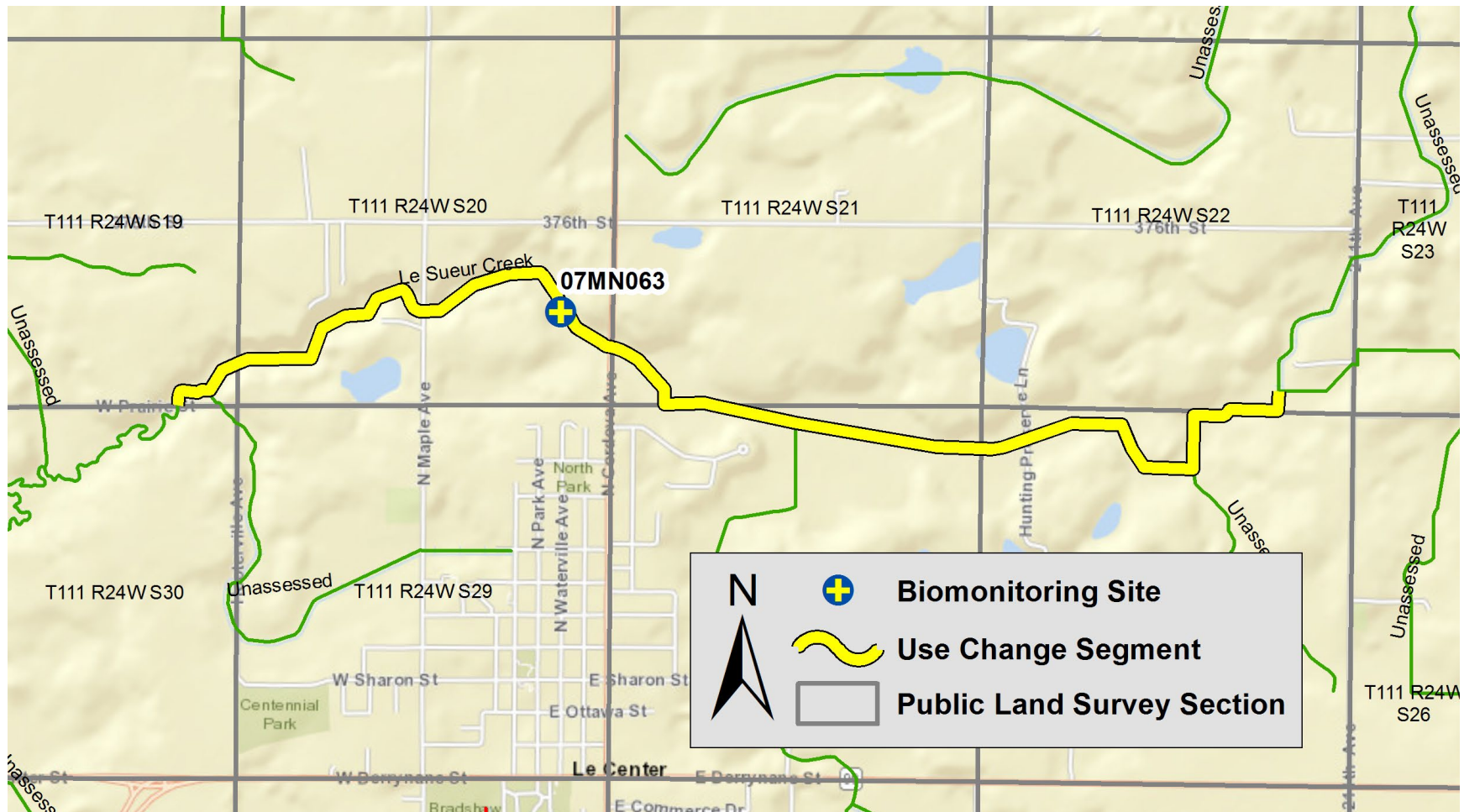
Ninemile Creek (07020012-808)



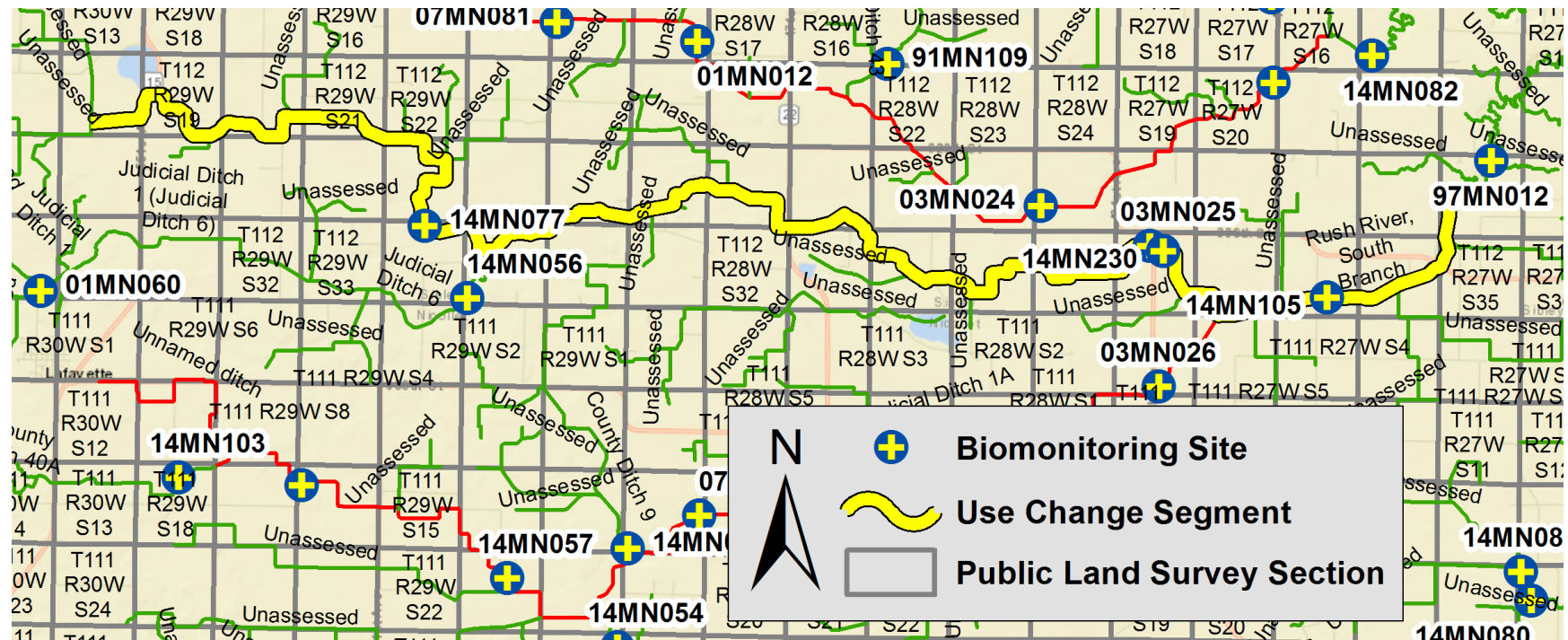
Raven Stream, East Branch (07020012-819)



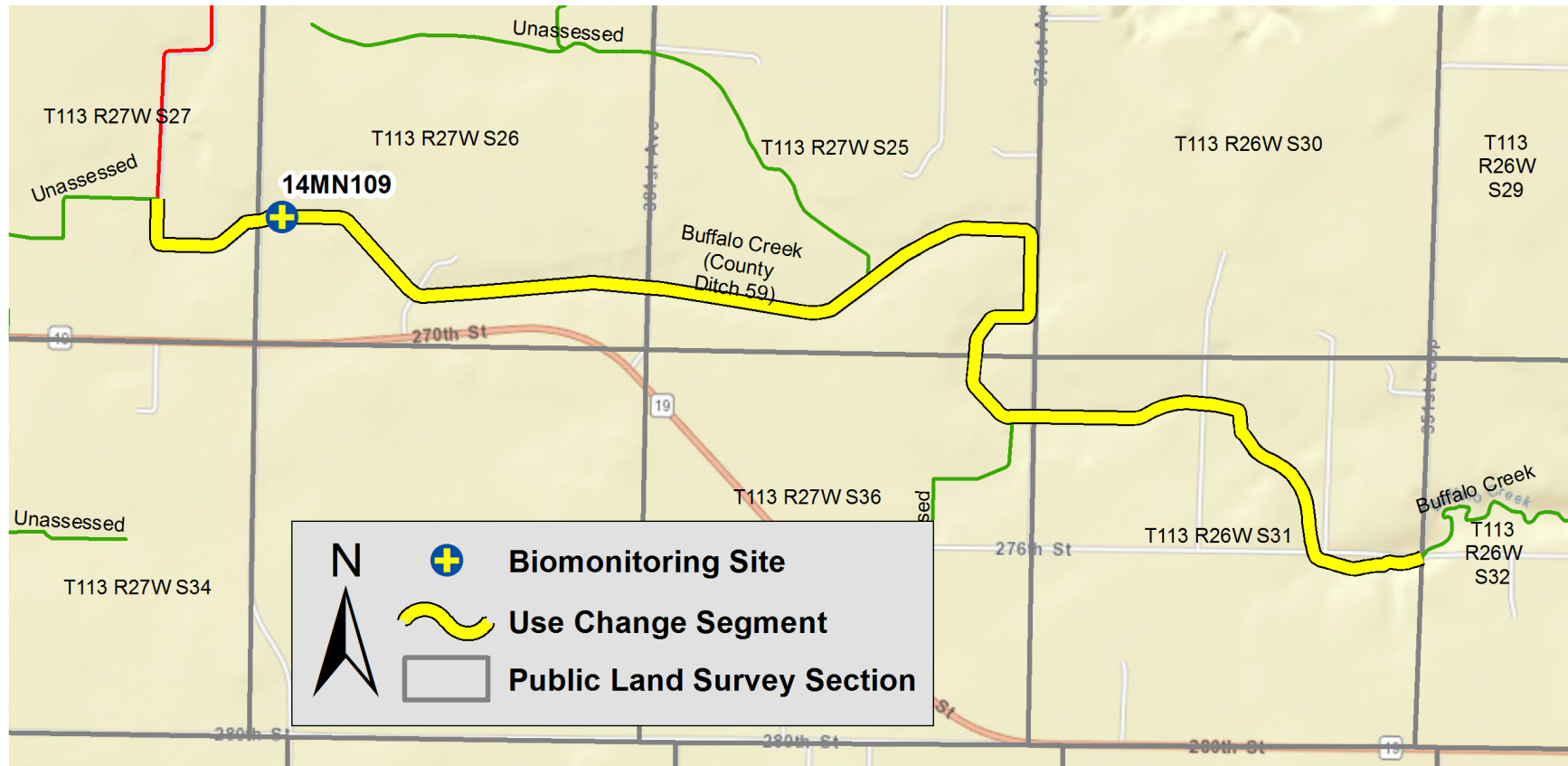
Le Sueur Creek (07020012-823)



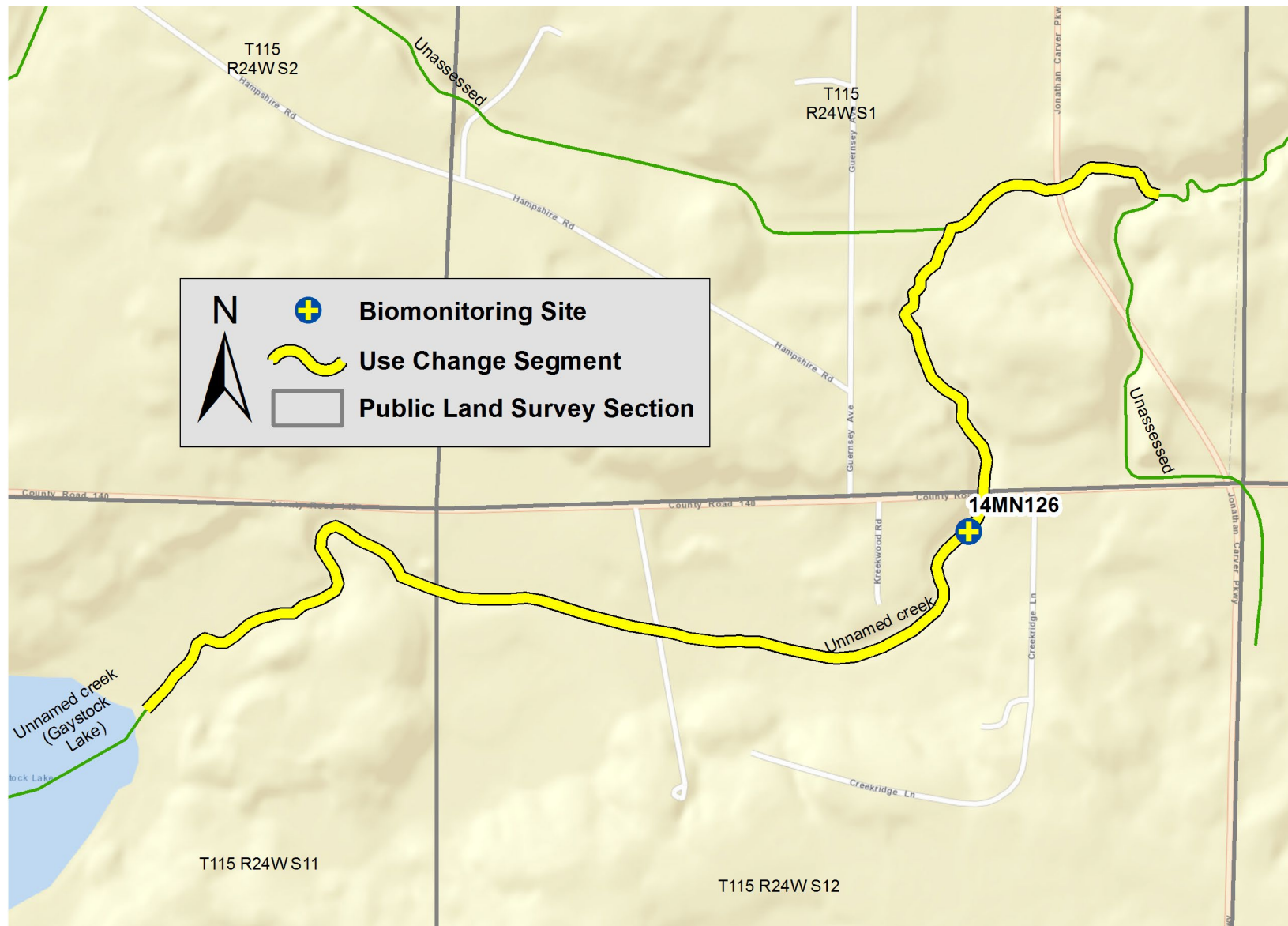
Rush River, South Branch (07020012-825)



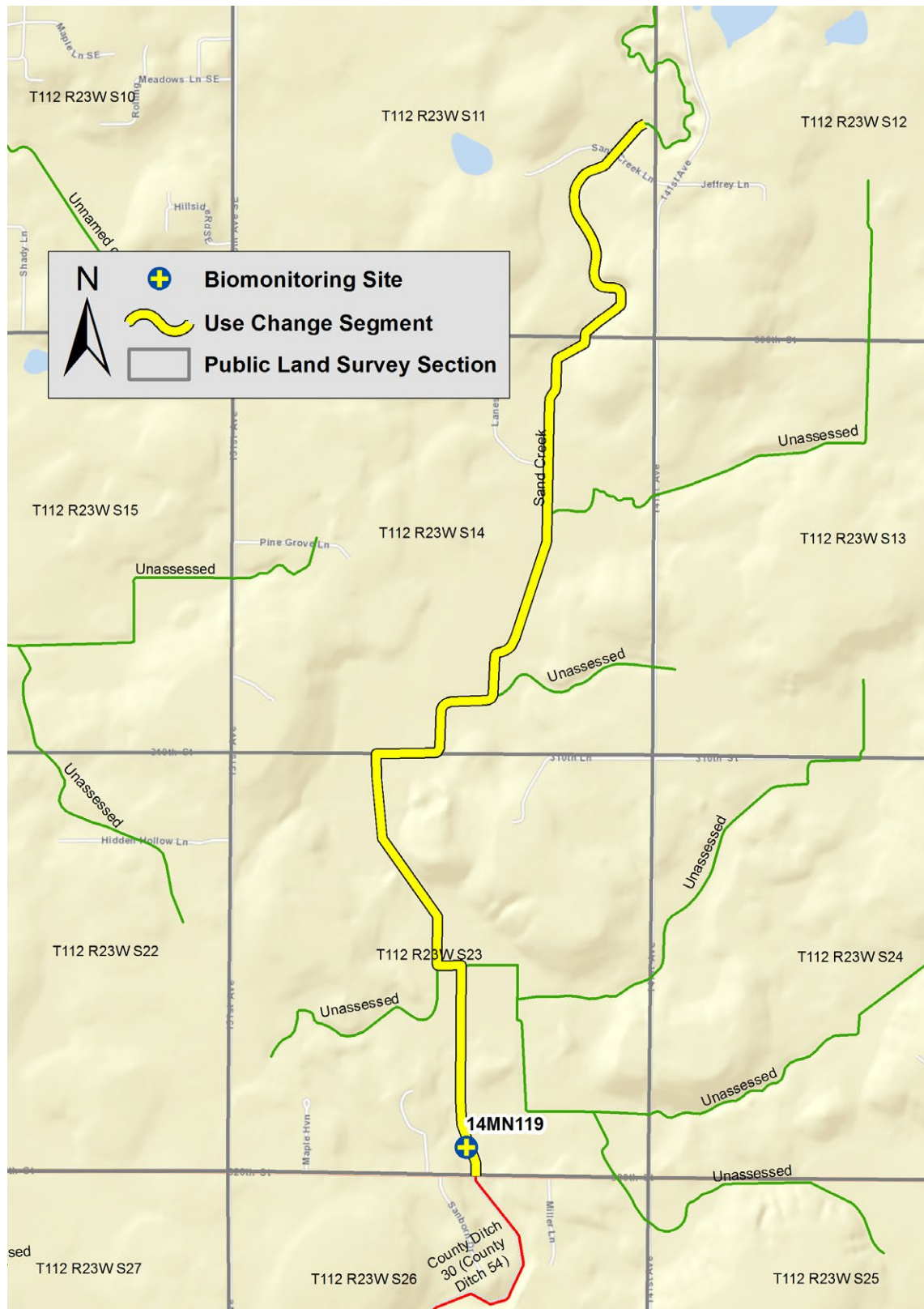
Buffalo Creek (County Ditch 59) (07020012-831)



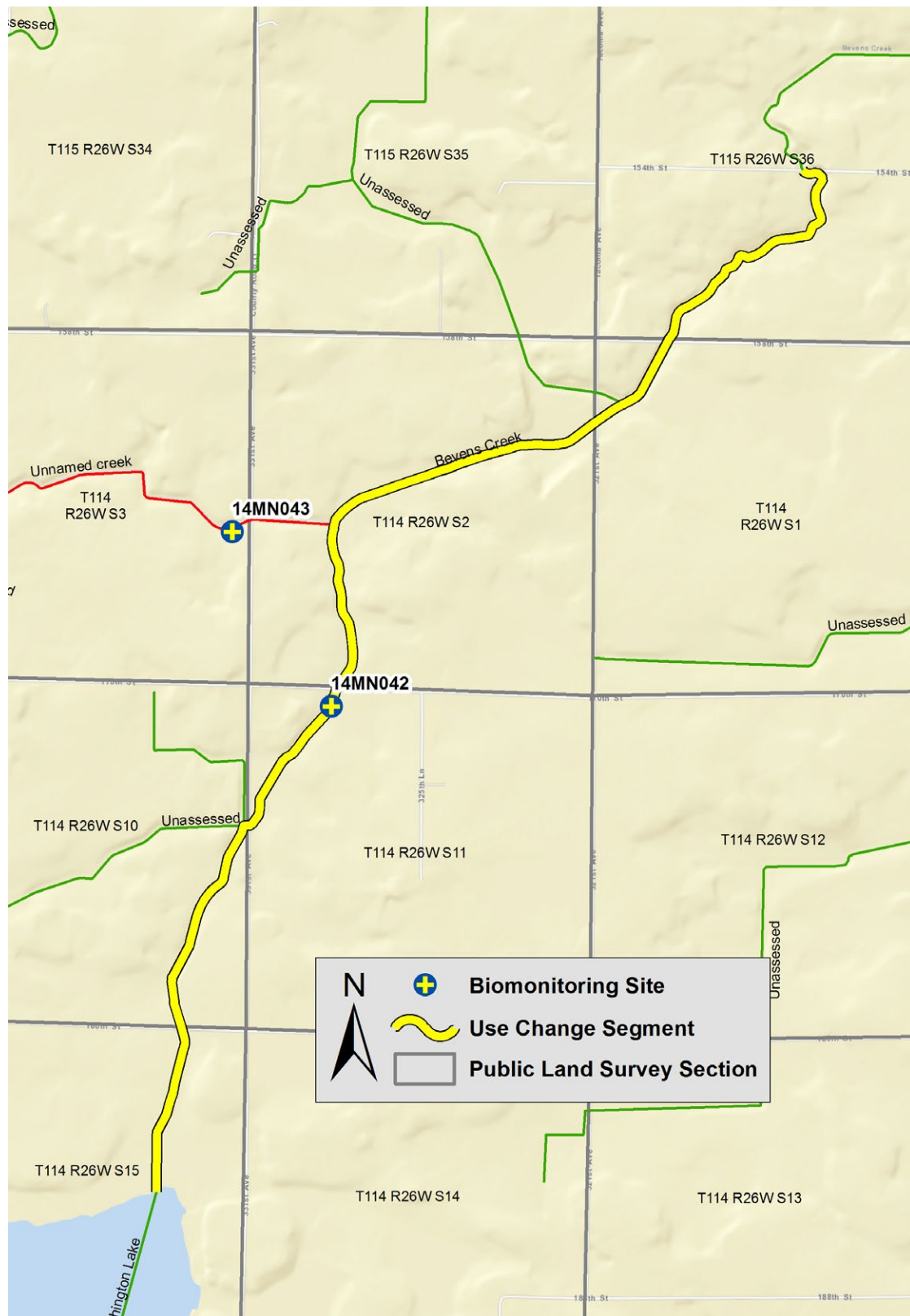
Unnamed creek (07020012-835)



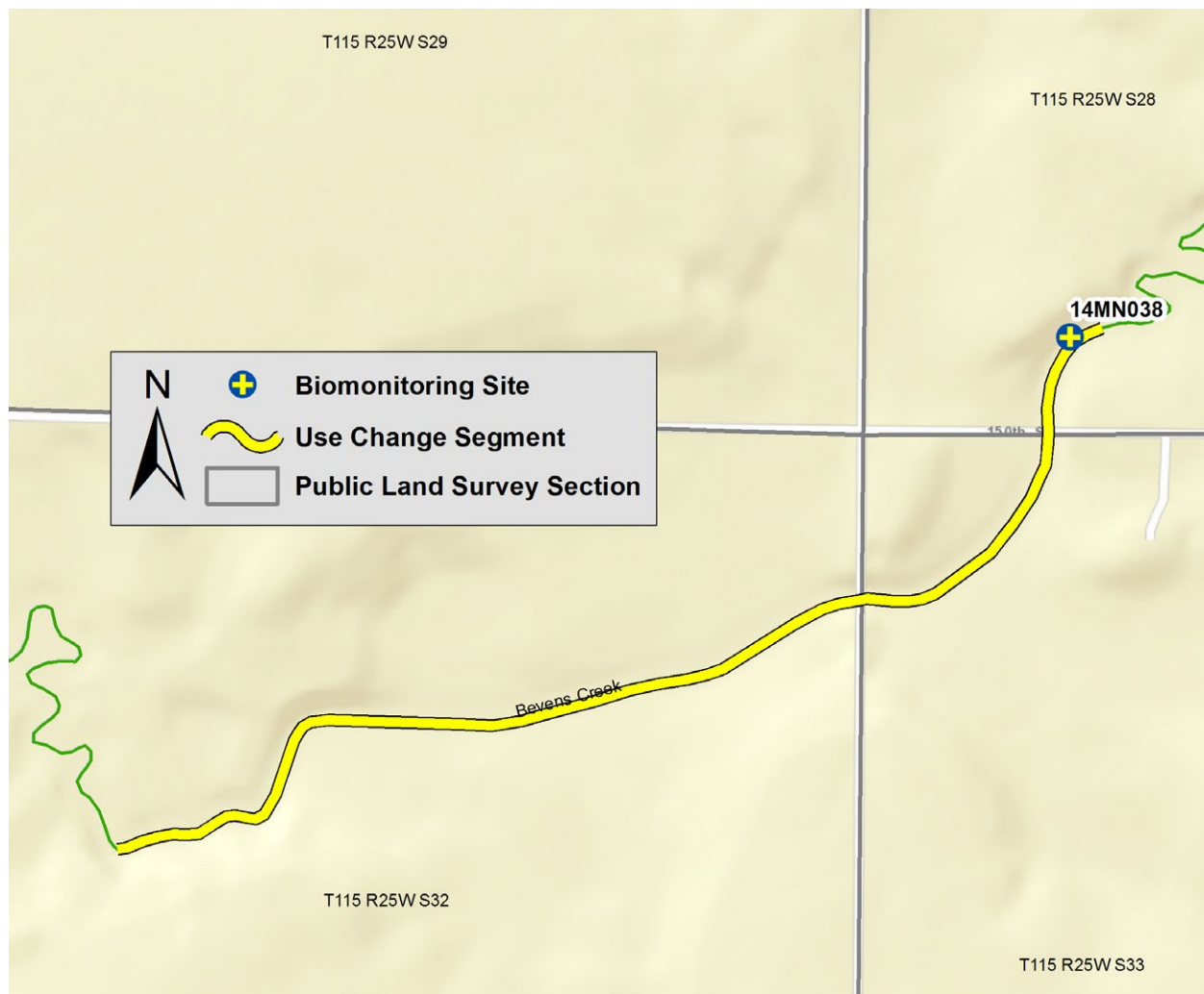
Sand Creek (07020012-839)



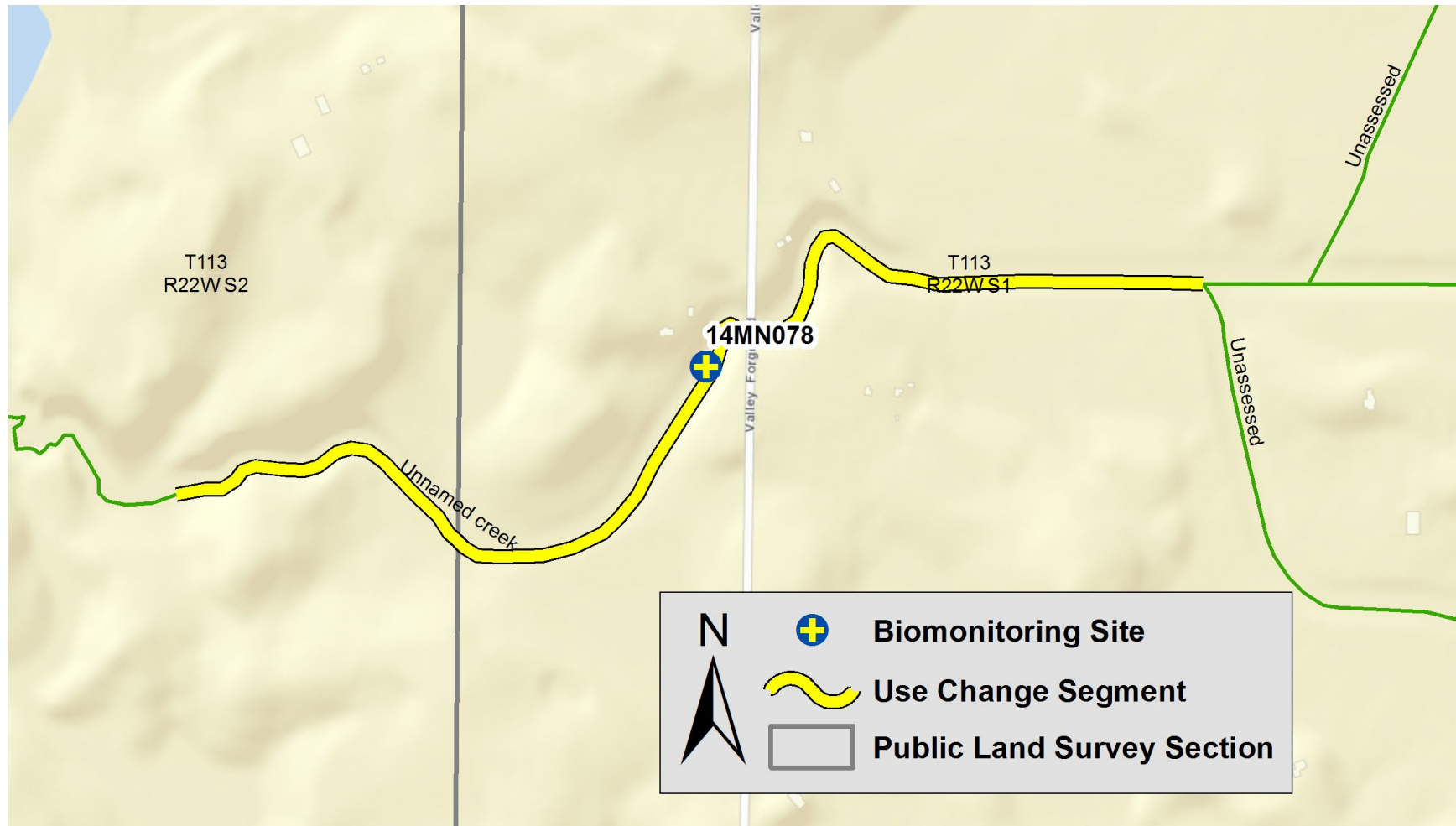
Bevens Creek (07020012-843)



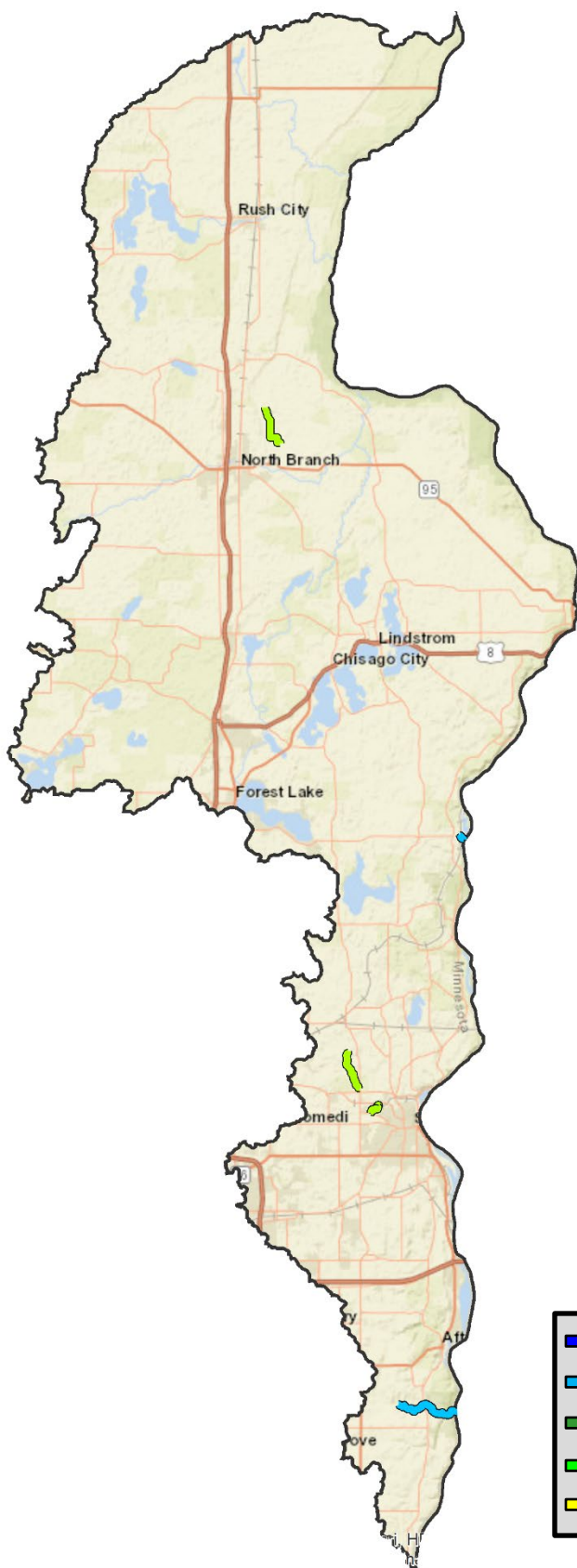
Bevens Creek (07020012-845)



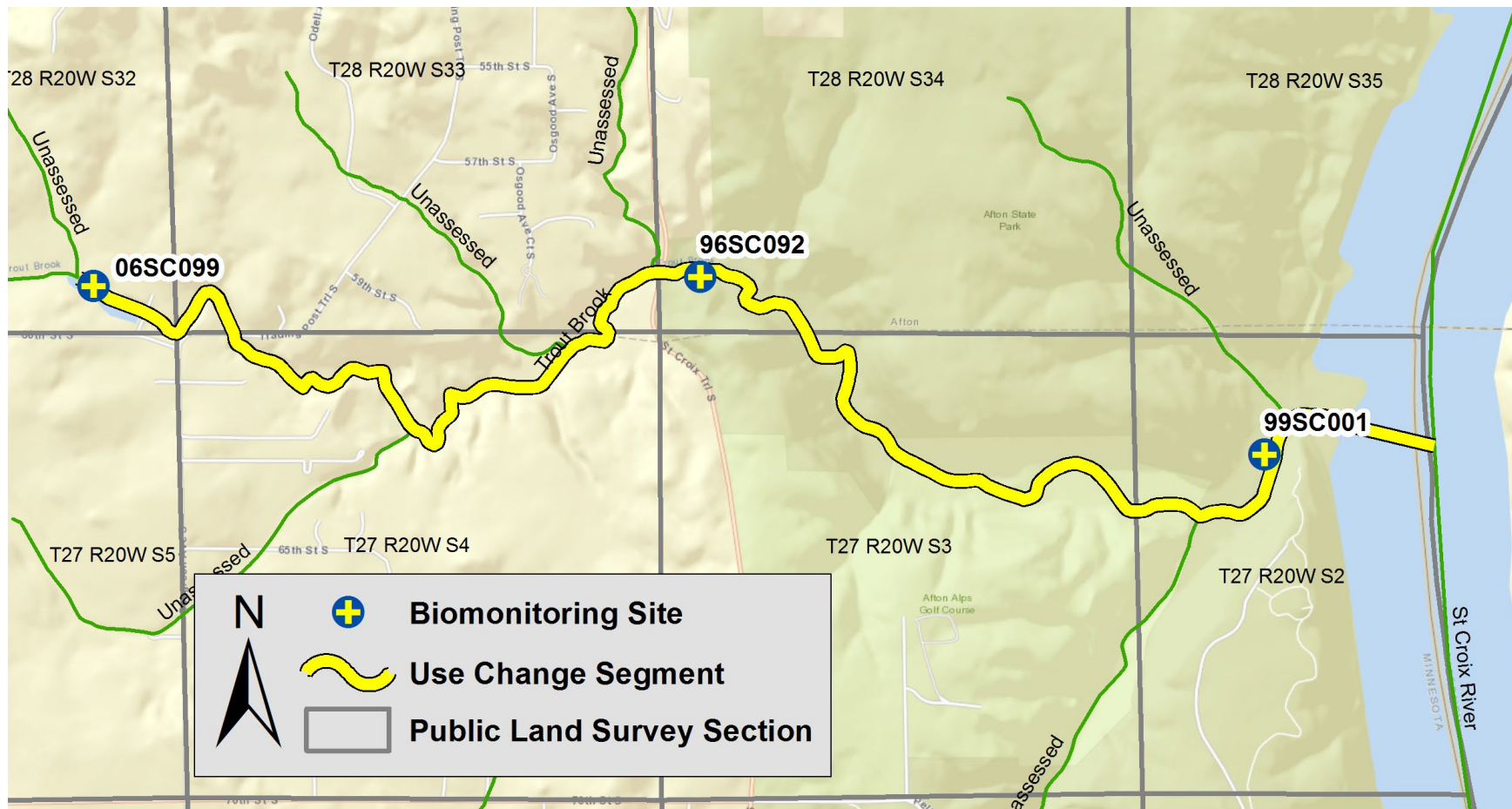
Unnamed creek (07020012-849)



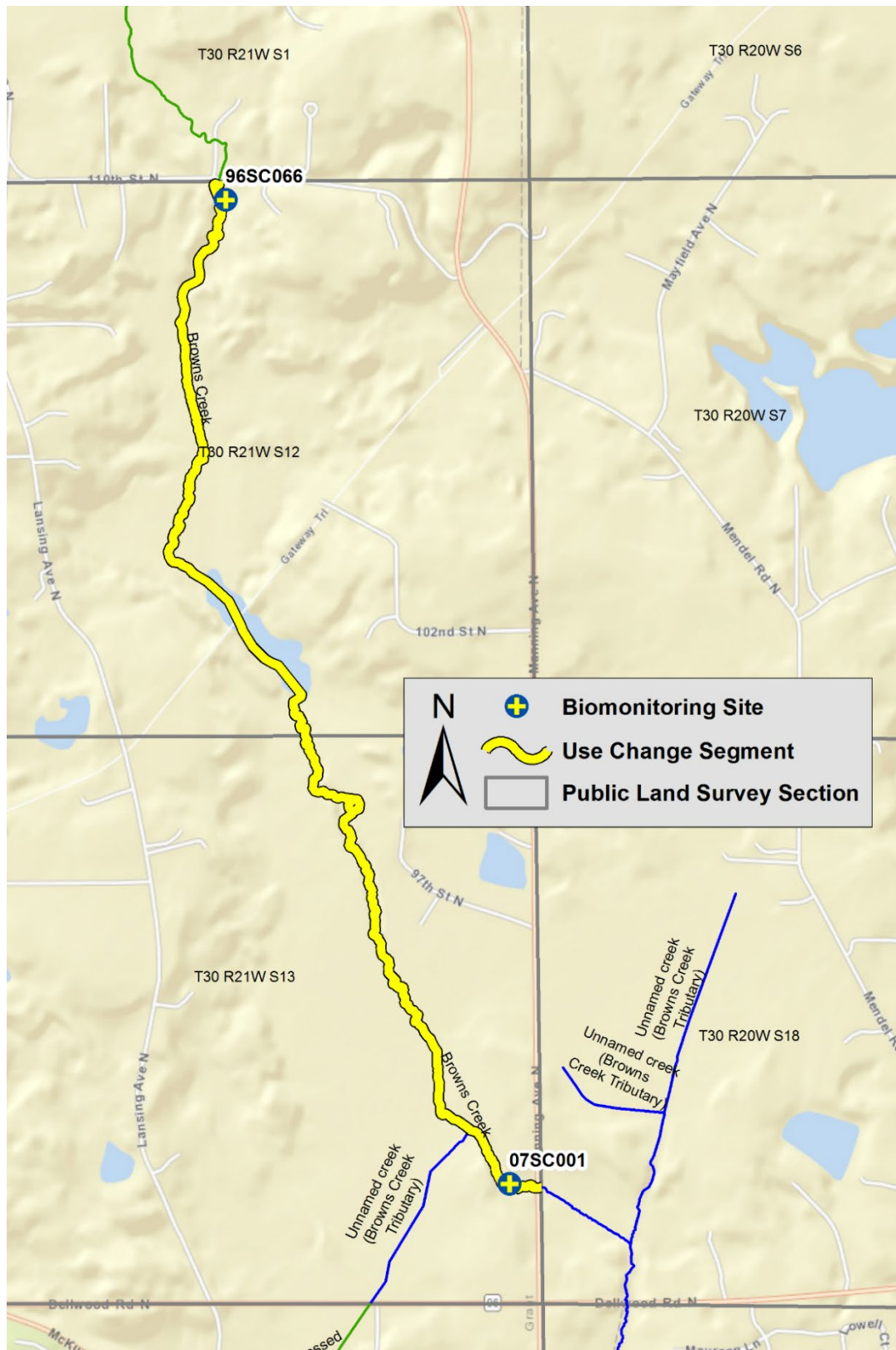
Lower St. Croix River (07030005)



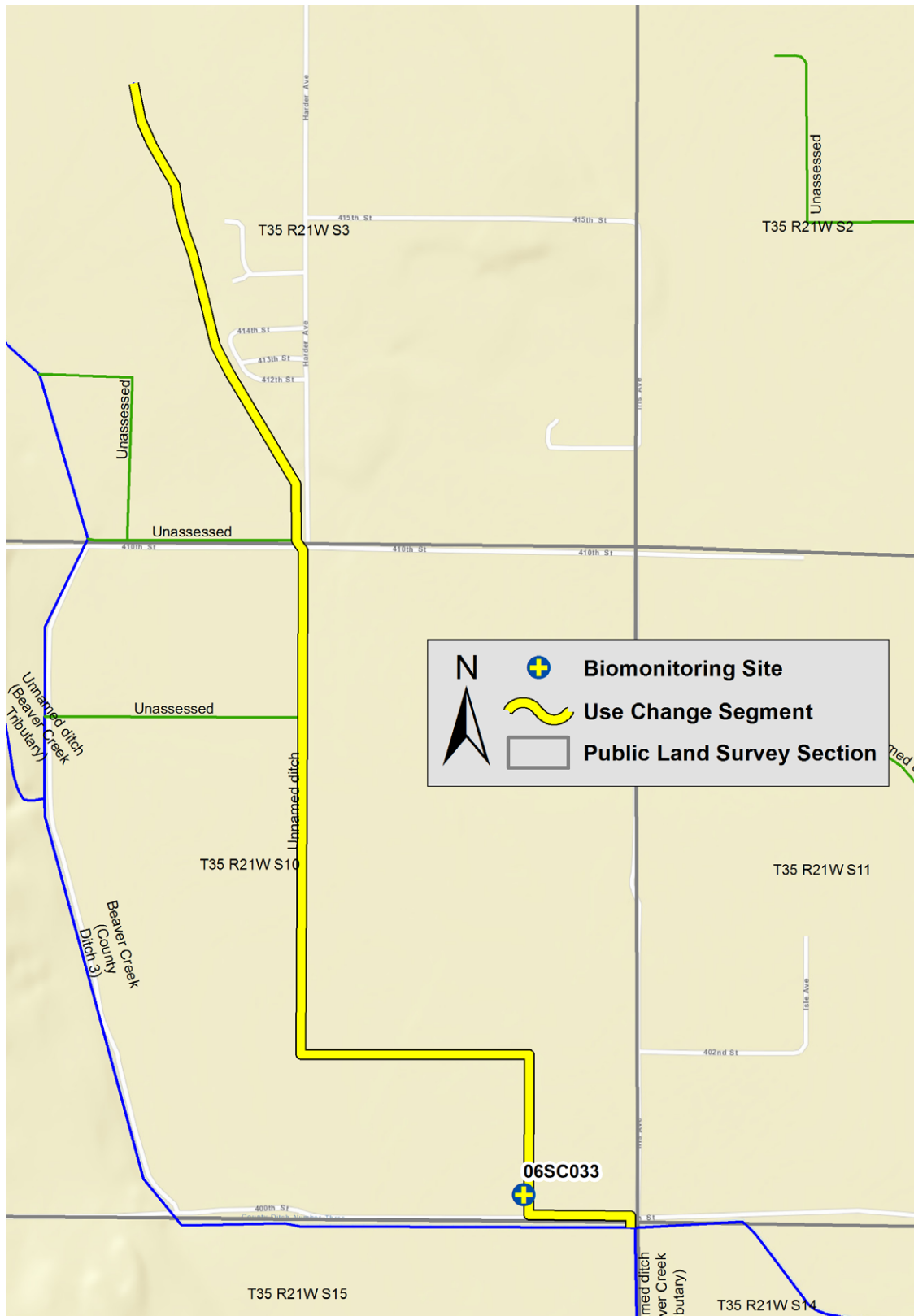
Trout Brook (07030005-568)



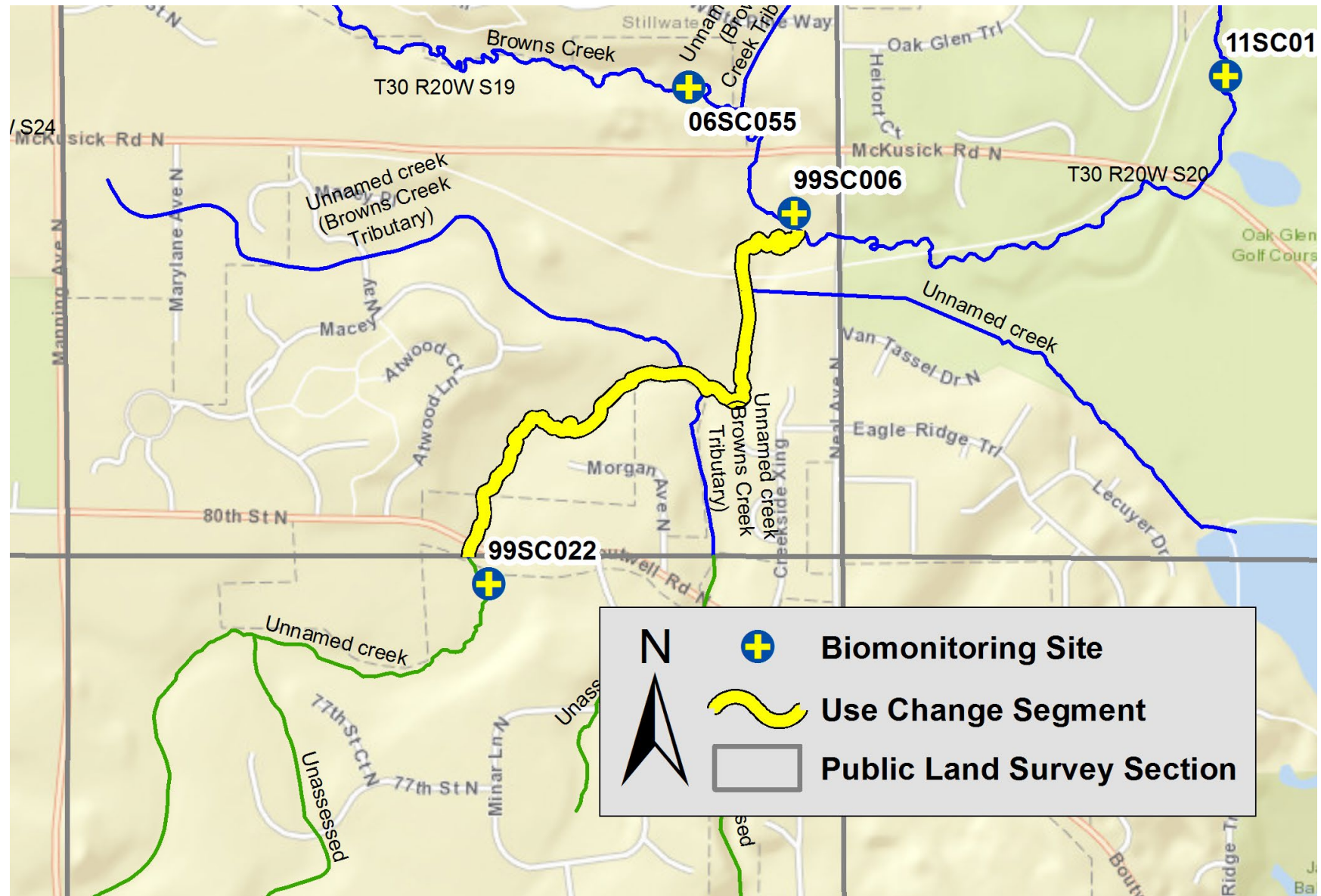
Browns Creek (07030005-587)



Unnamed ditch (07030005-593)



Unnamed creek (07030005-766, 07030005-767)



Unnamed creek (Zavoral's Creek) (07030005-778)

