

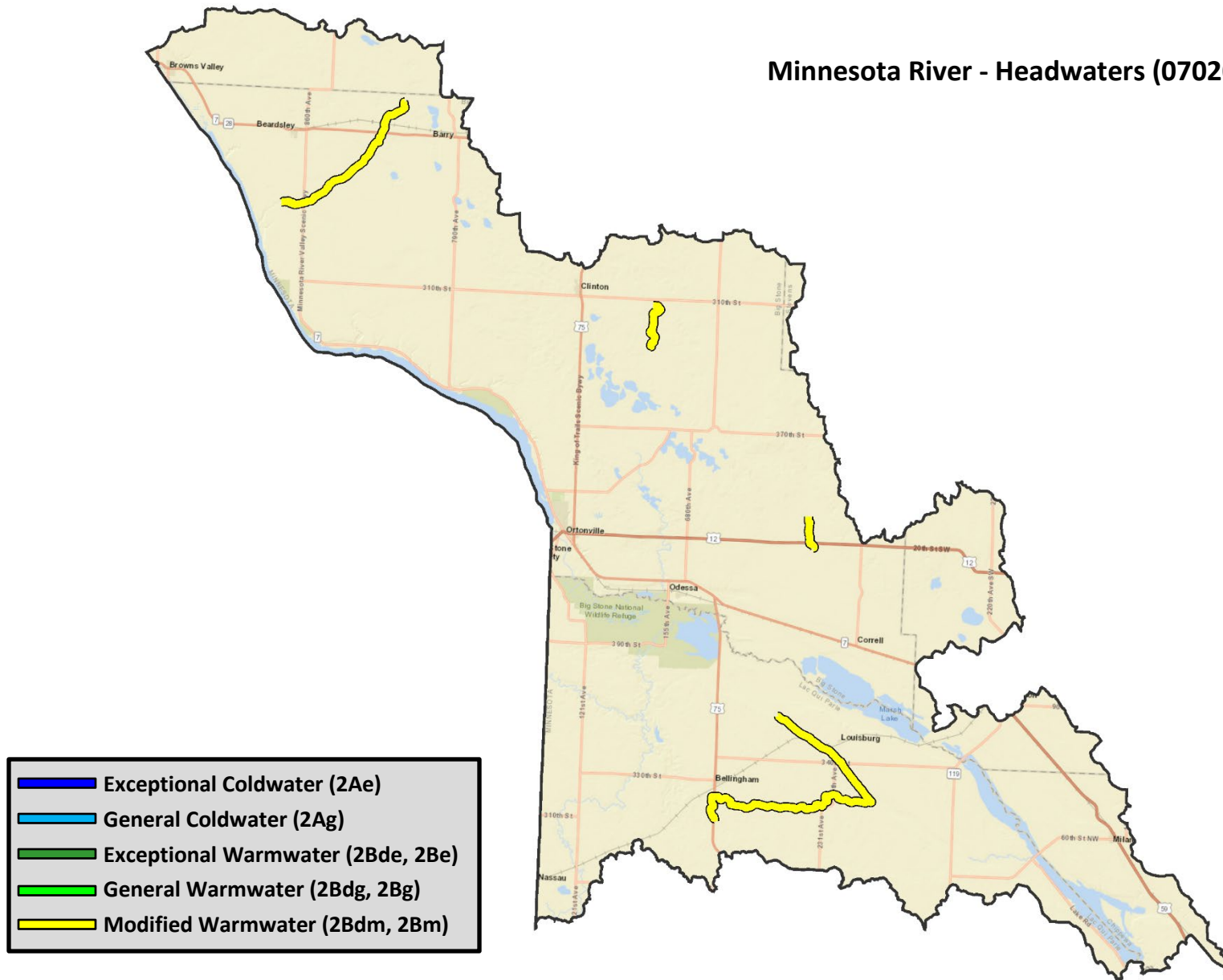
Appendix E: Maps of designated use changes - Minnesota River (part)

Watersheds

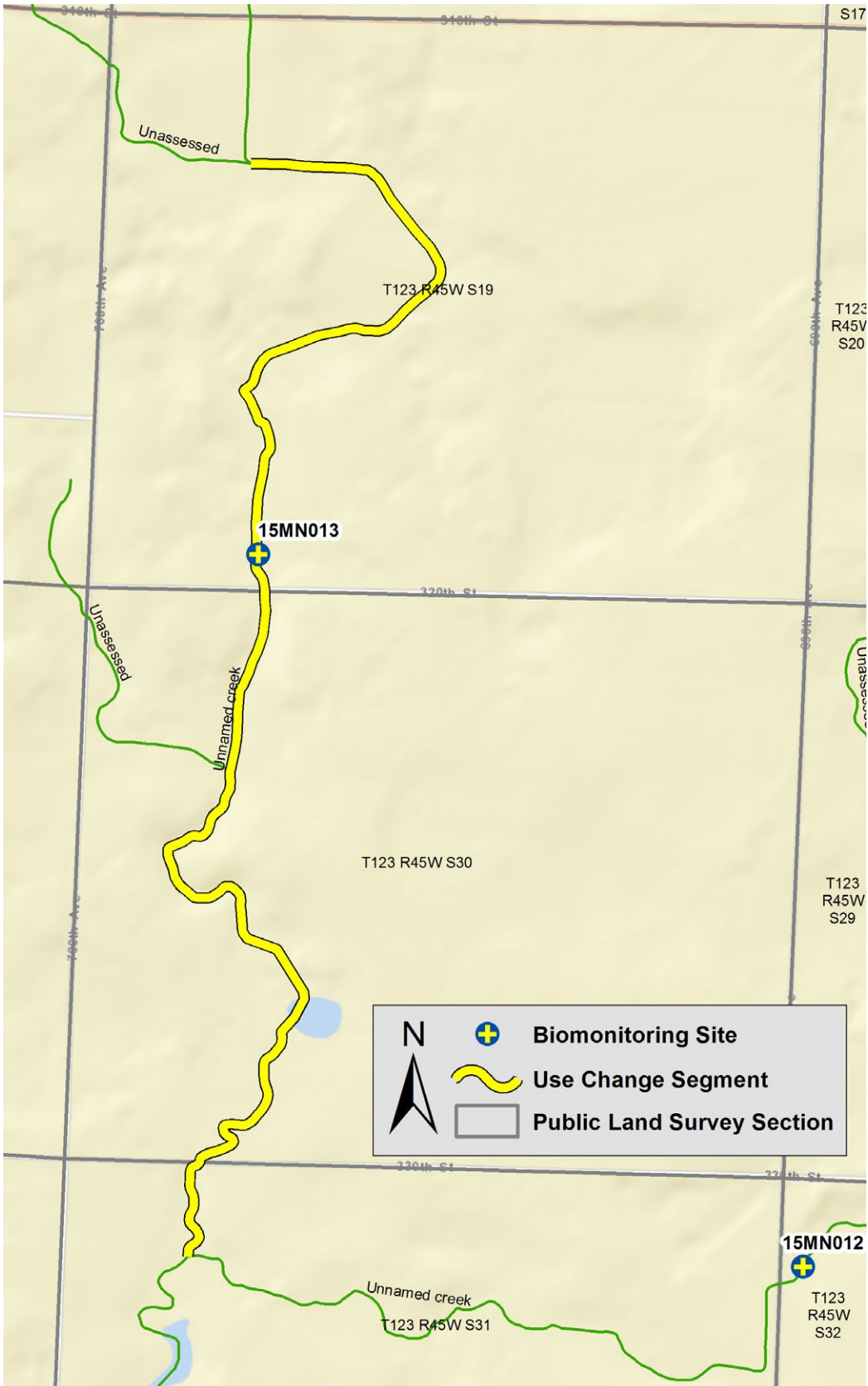
1. Minnesota River - Headwaters (07020001)
2. Lac Qui Parle River (07020003)
3. Chippewa River (07020005)
4. Minnesota River - Mankato (07020007)
5. Minnesota River - Lower (07020012) - part

wq-rule4-21a5

Minnesota River - Headwaters (07020001)



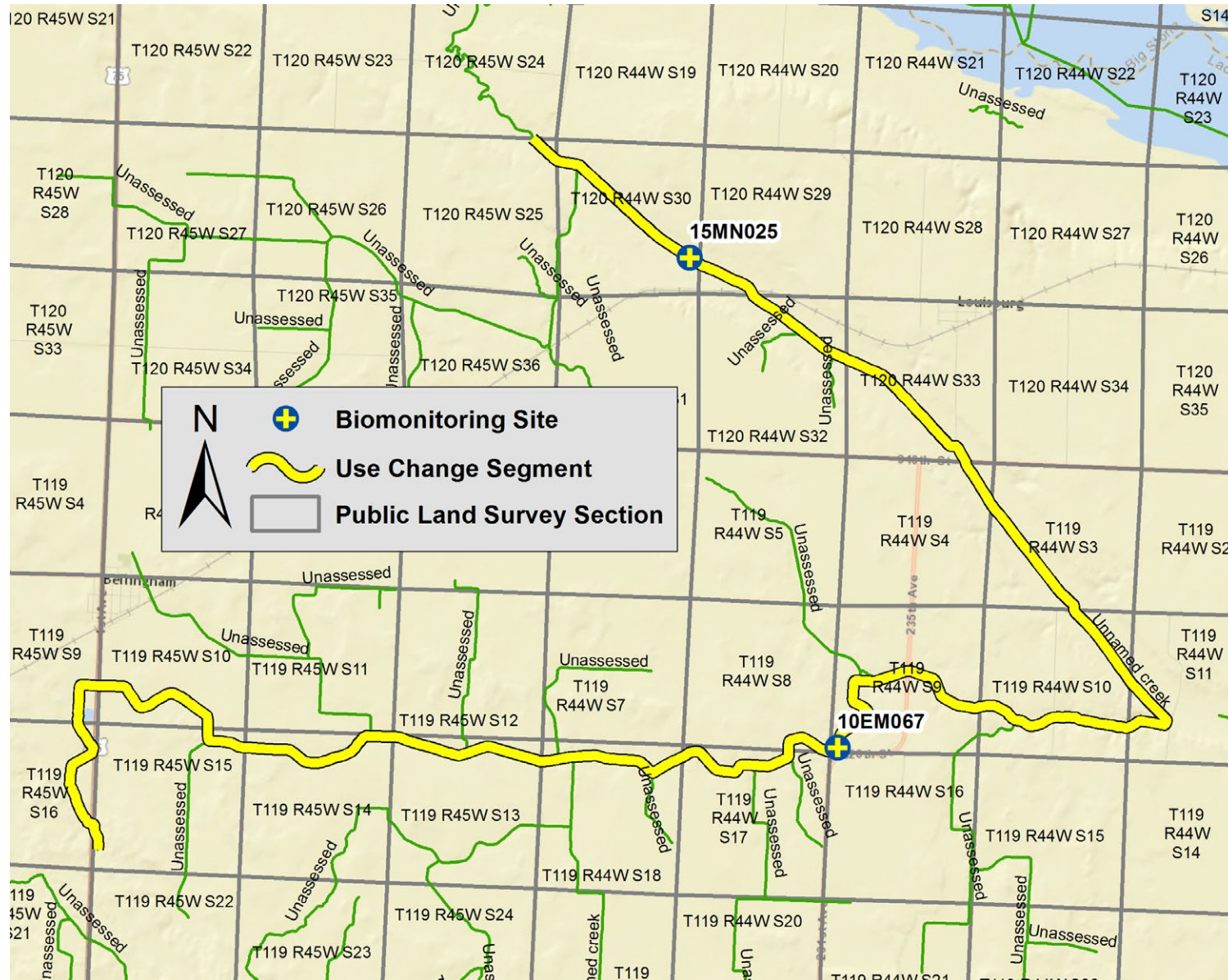
Unnamed creek (07020001-560)



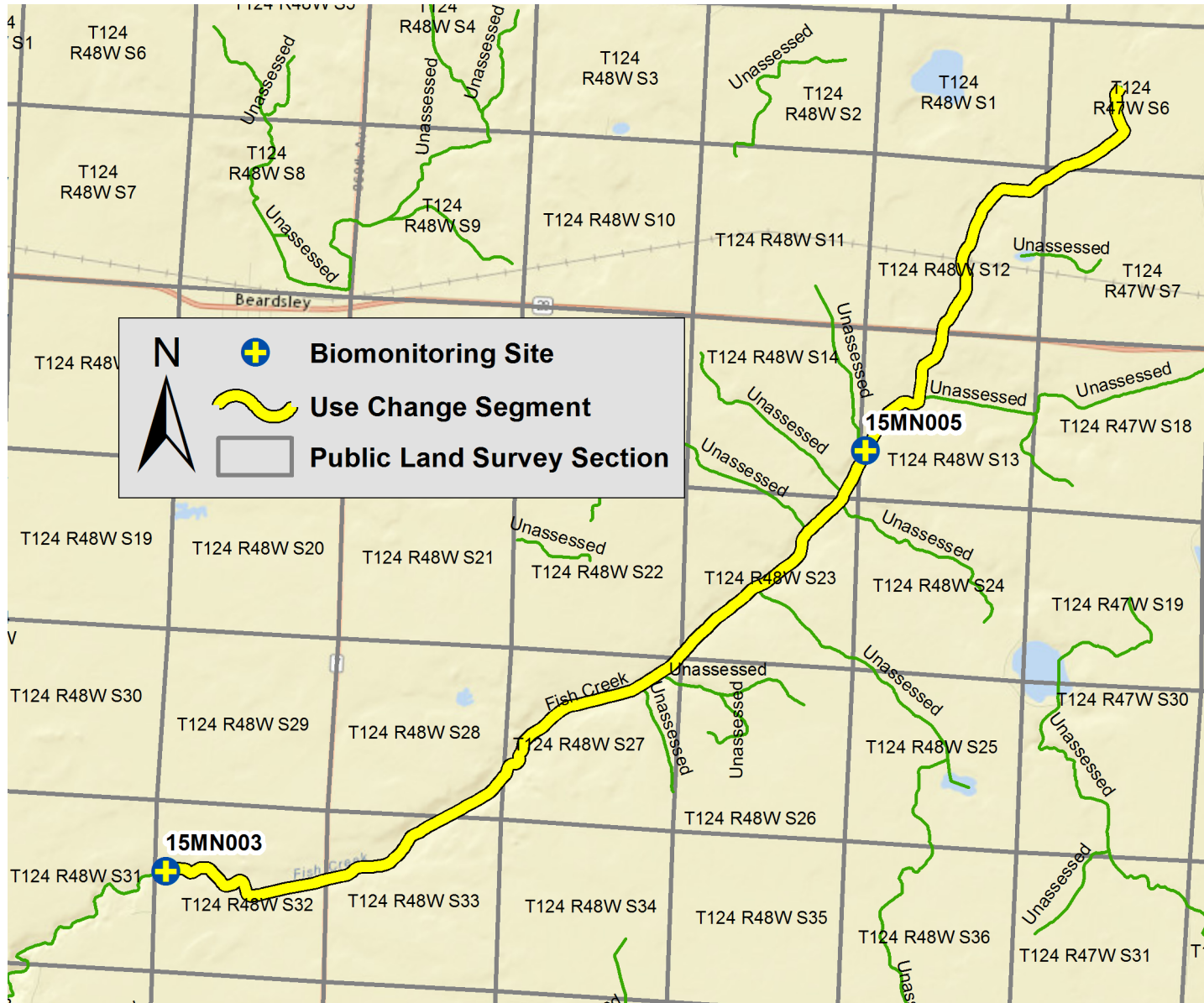
County Ditch 2 (07020001-562)



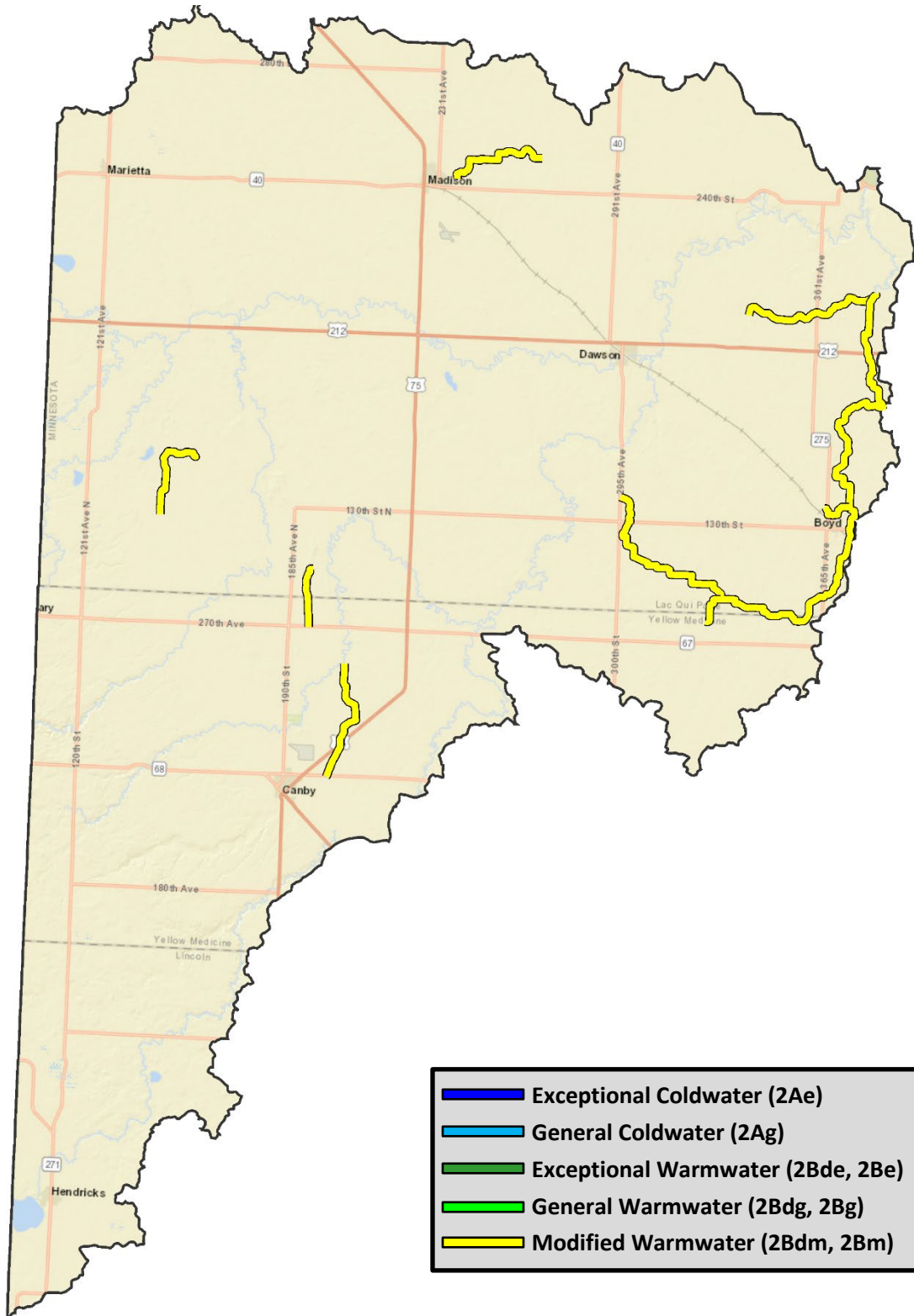
Unnamed creek (07020001-569)



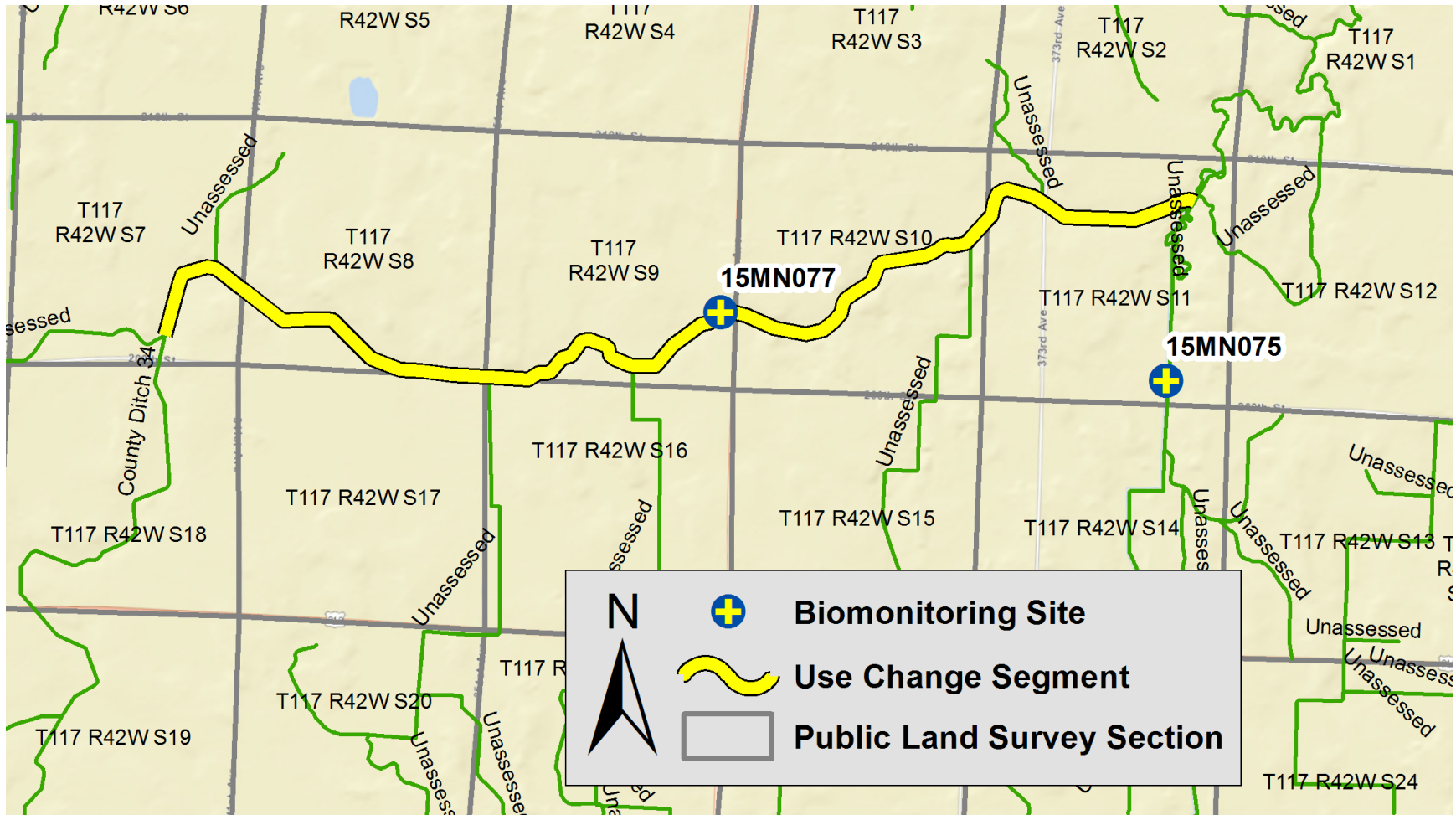
Fish Creek (07020001-571)



Lac Qui Parle River (07020003)



County Ditch 34 (07020003-526)

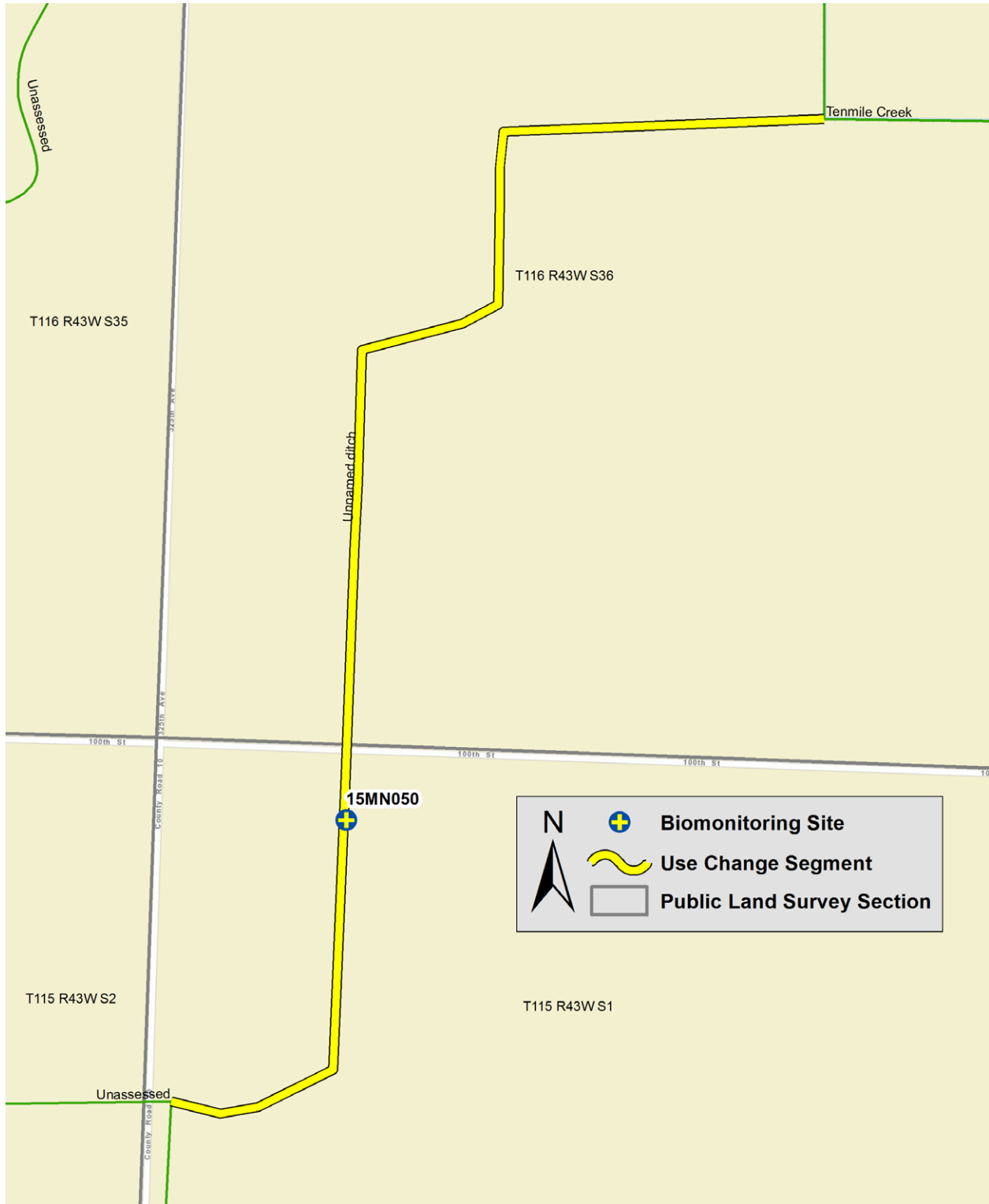


Judicial Ditch 1 (07020003-560)

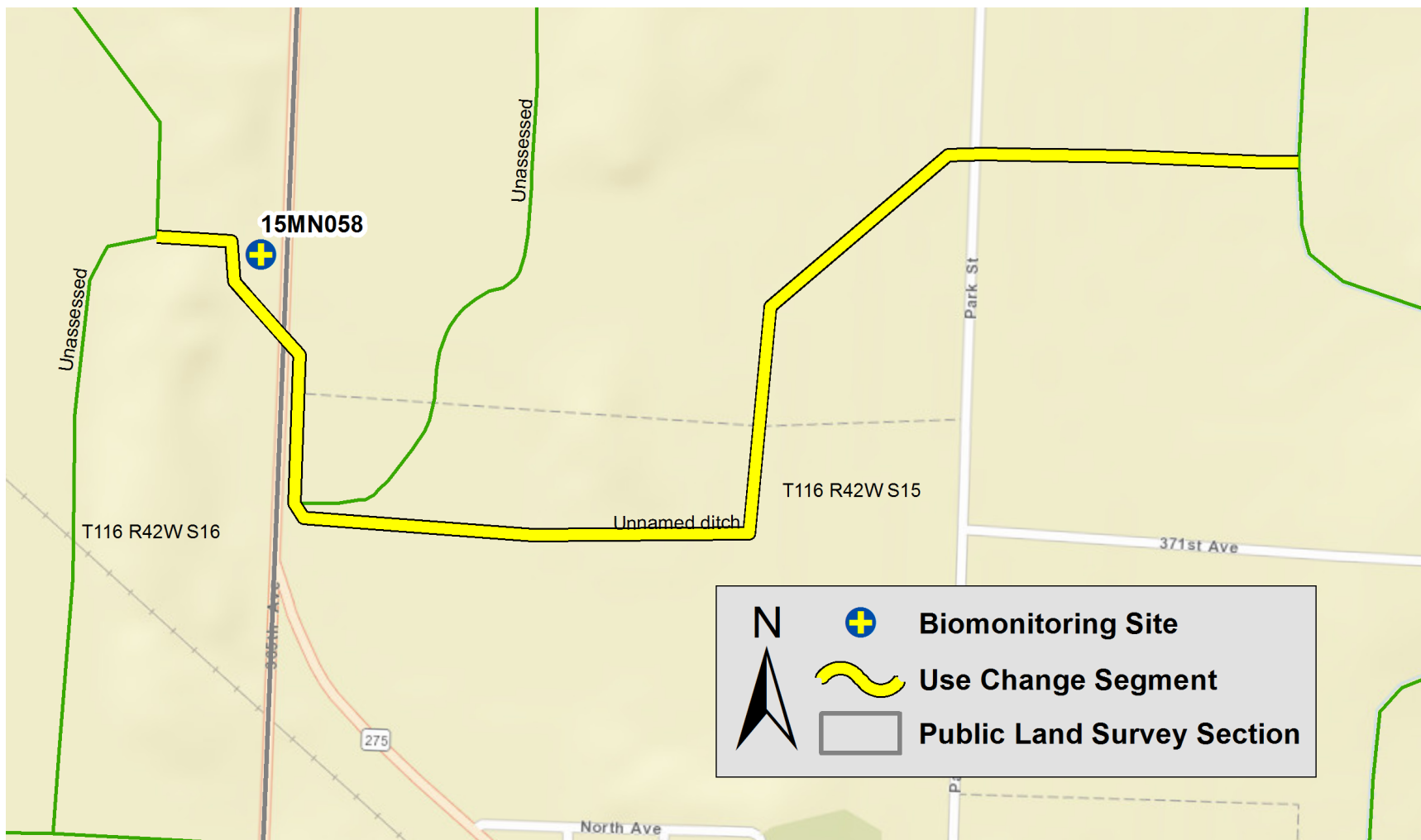


Sources: Esri, DeLorme, NAVTEQ, USGS, Intermap, iPC, NRCAN, Esri Japan, METI, Esri China (Hong Kong), Esri (Thailand), TomTom, 2013

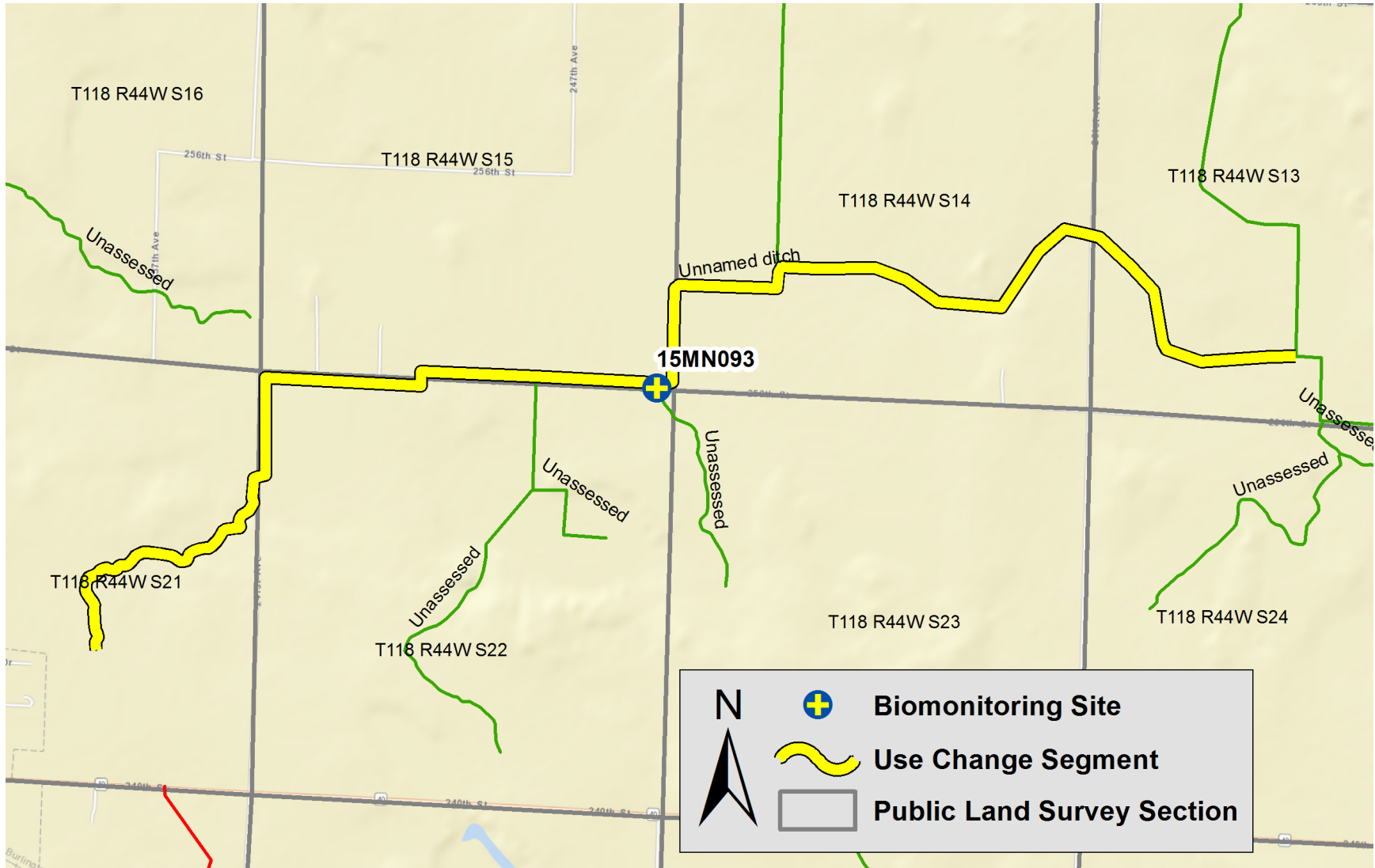
Unnamed ditch (Tributary to Tenmile Creek) (07020003-570)



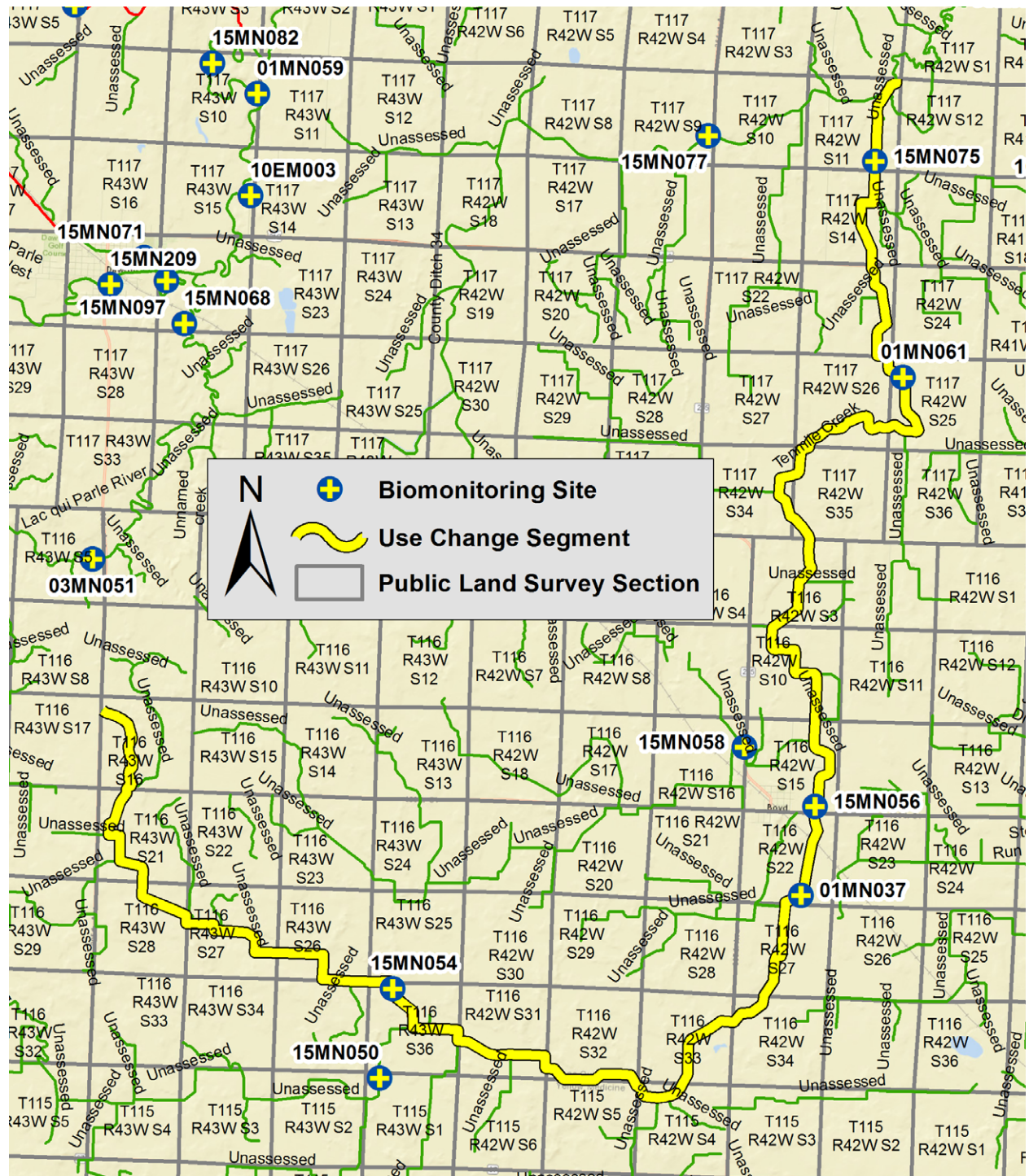
Unnamed ditch (Tributary to Tenmile Creek) (07020003-571)



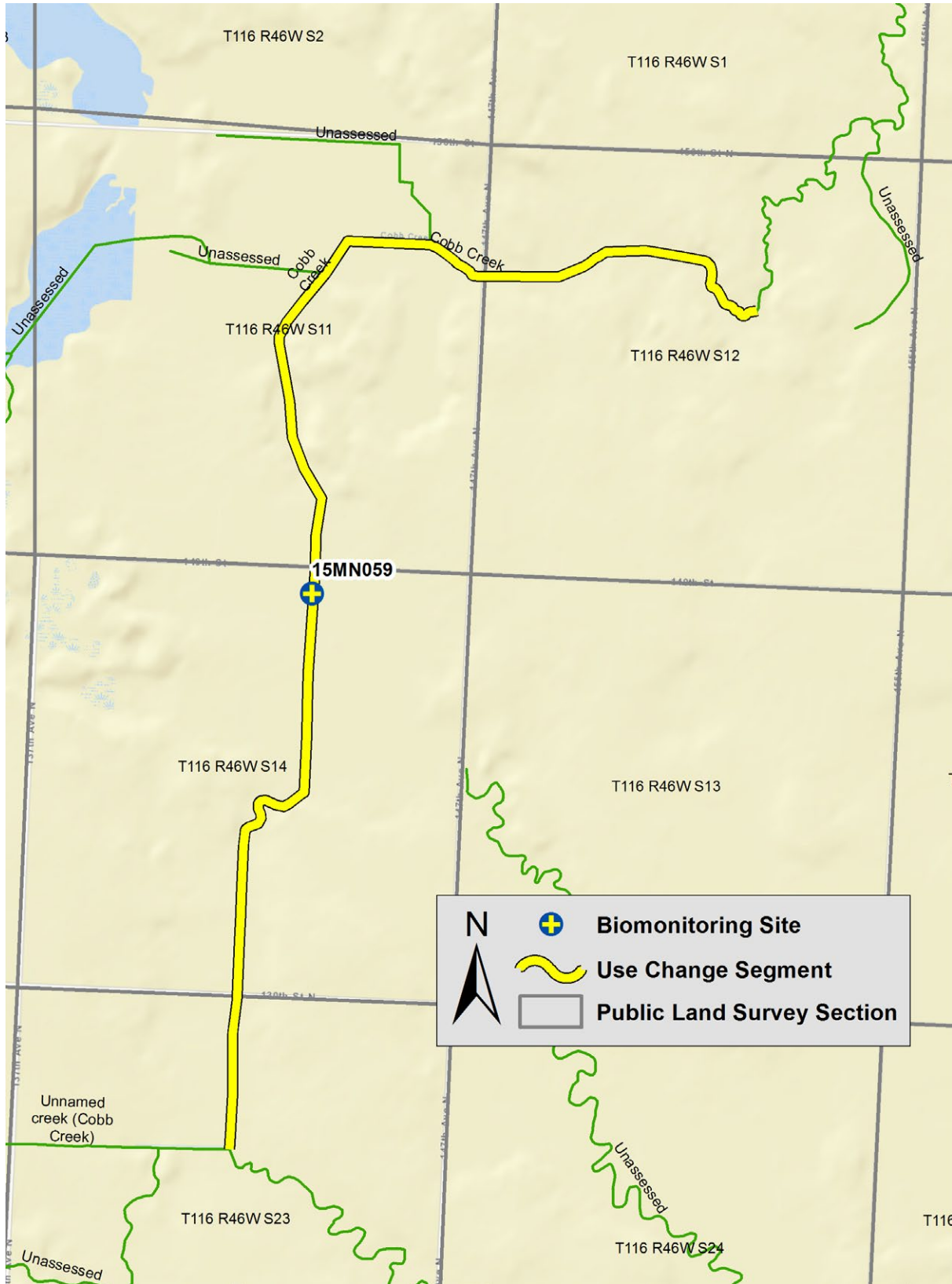
Unnamed ditch (07020003-575)



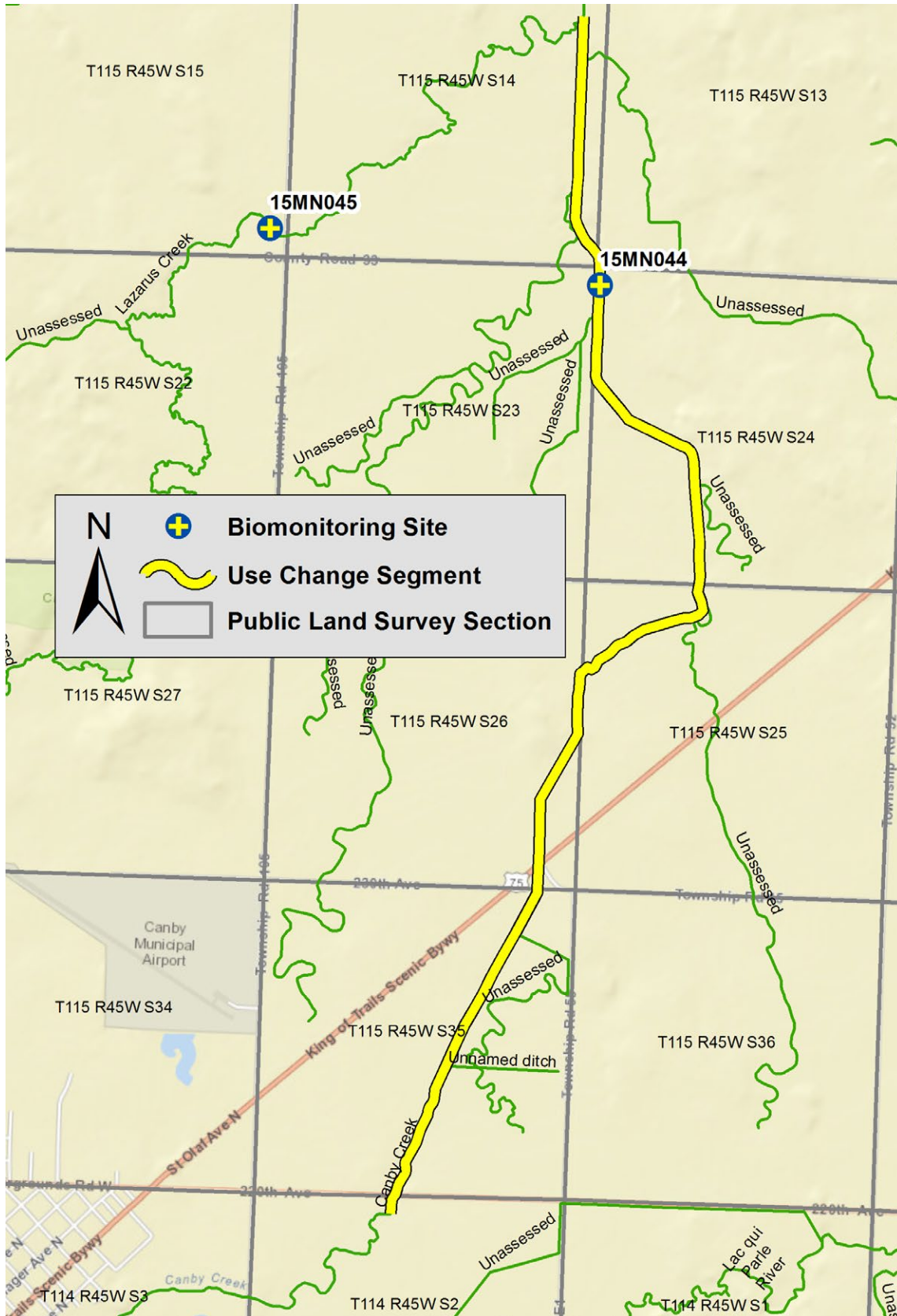
Tenmile Creek (07020003-577)



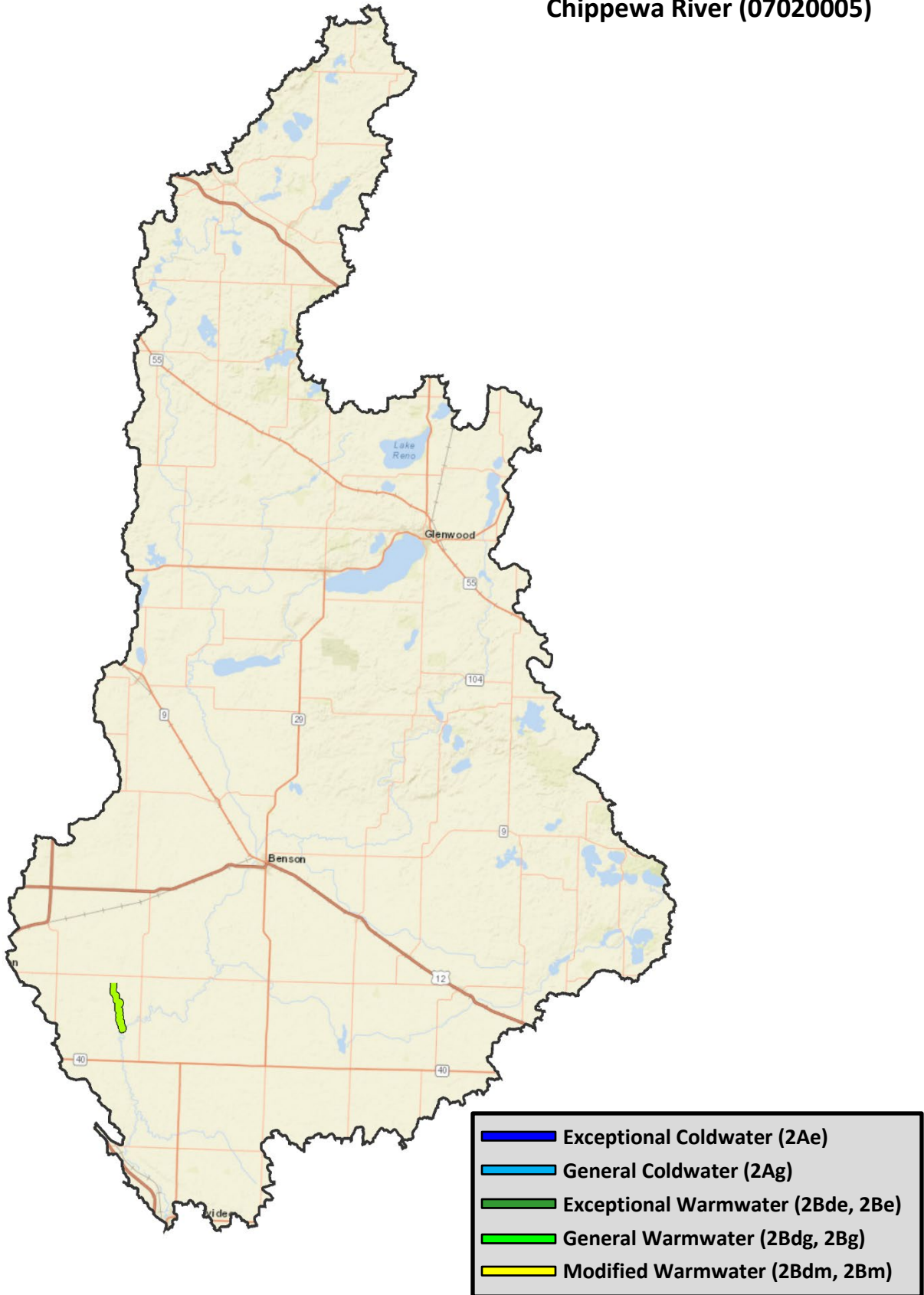
Cobb Creek (07020003-583)



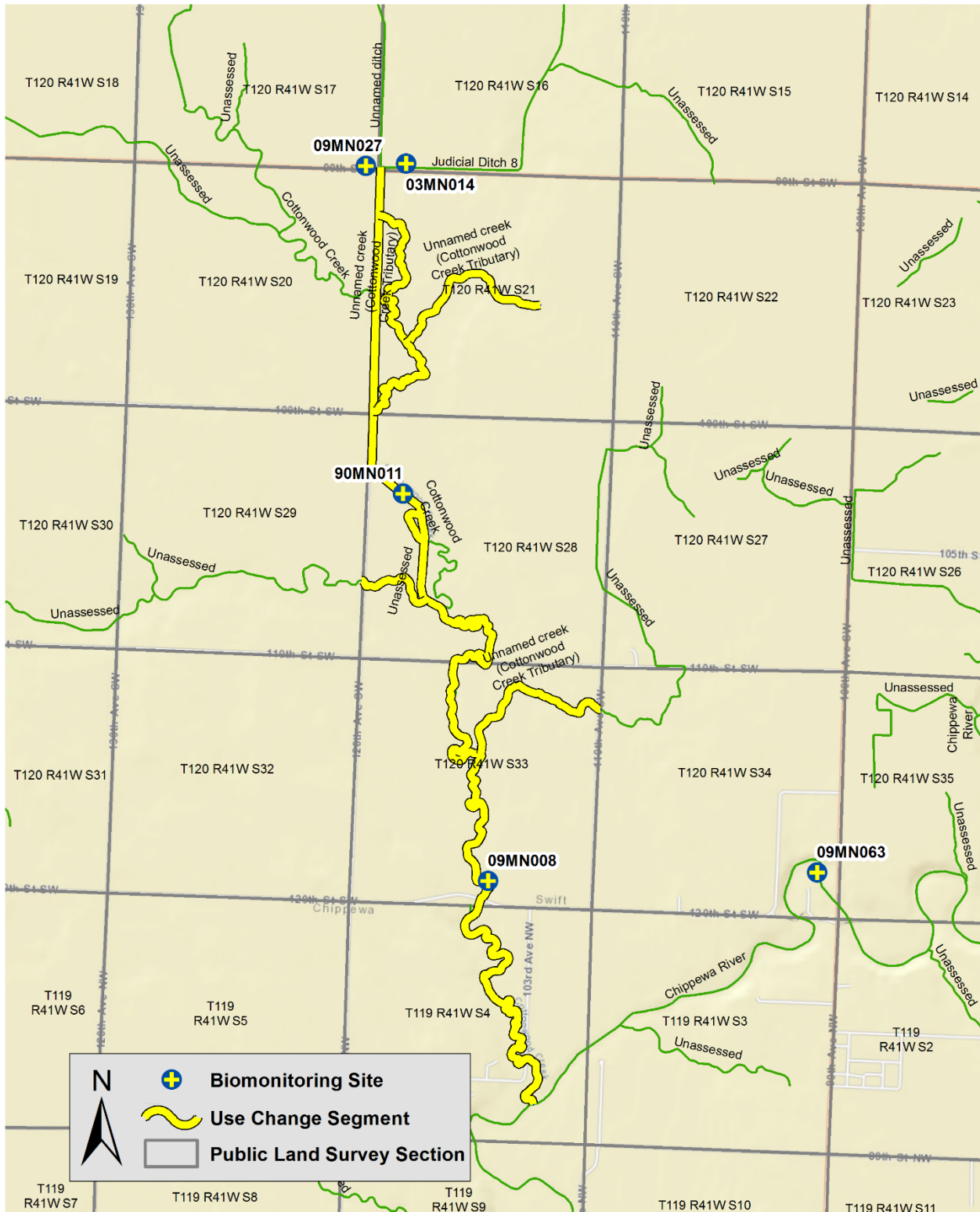
Canby Creek (07020003-586)



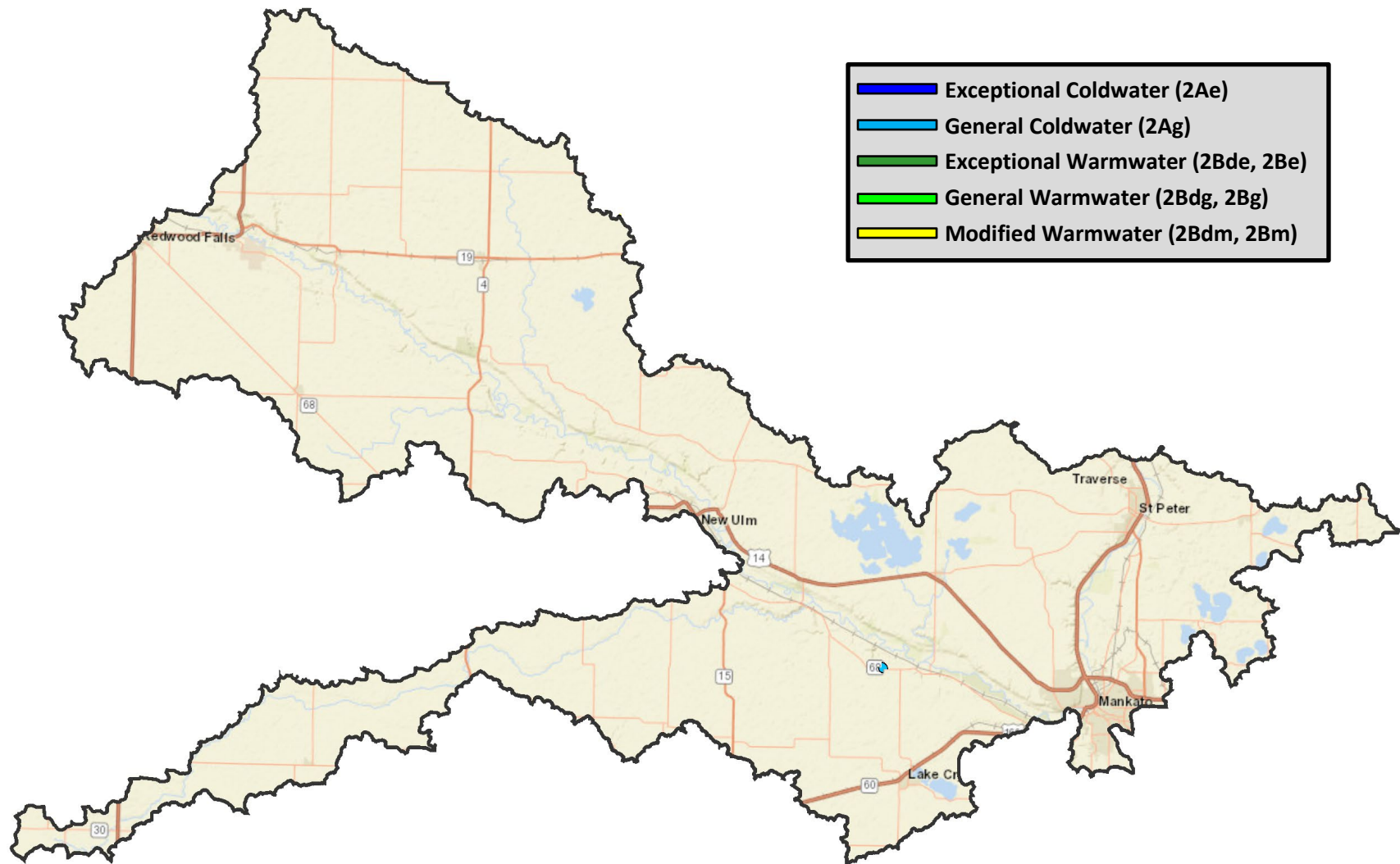
Chippewa River (07020005)



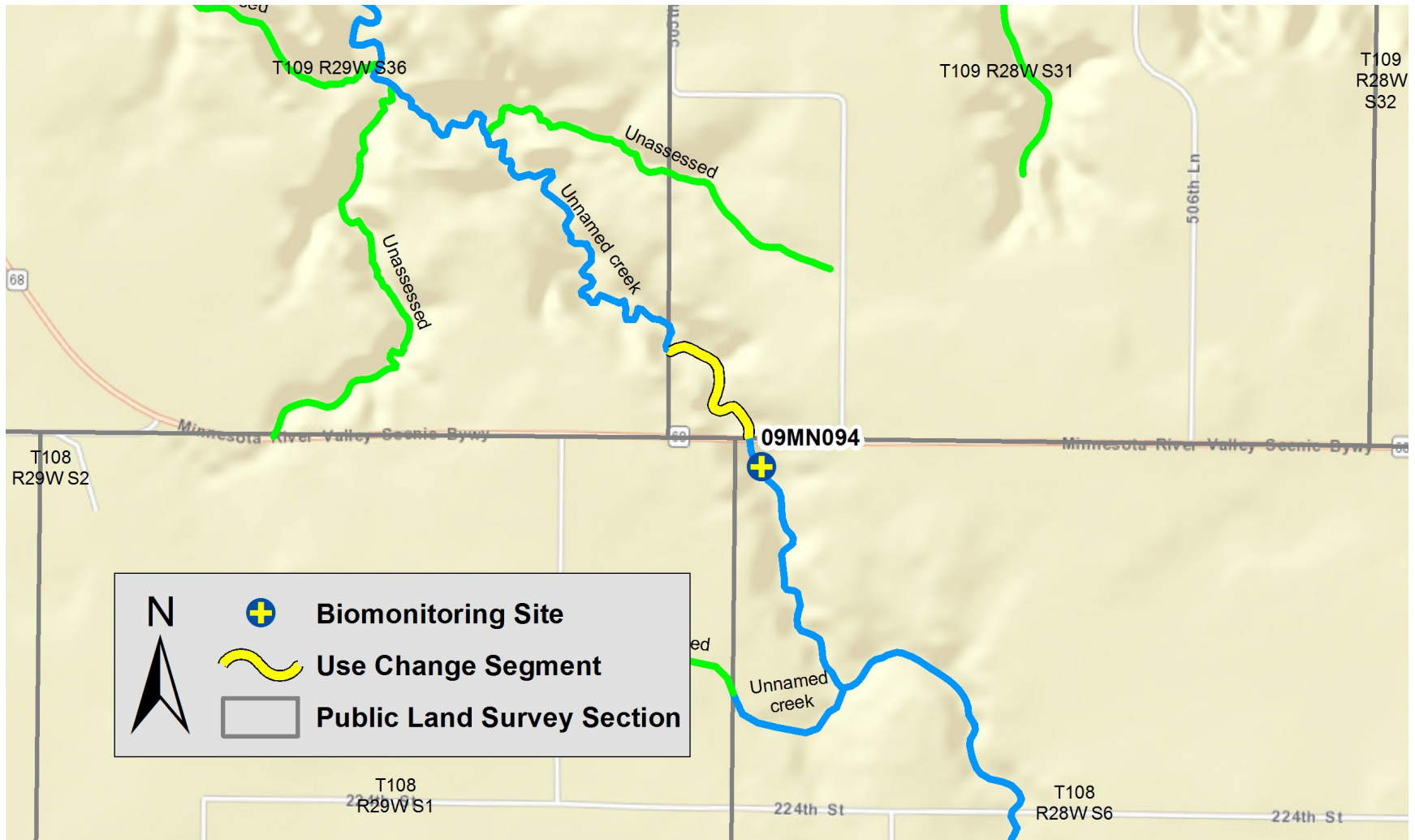
Cottonwood Creek (07020005-728, 07020005-729)



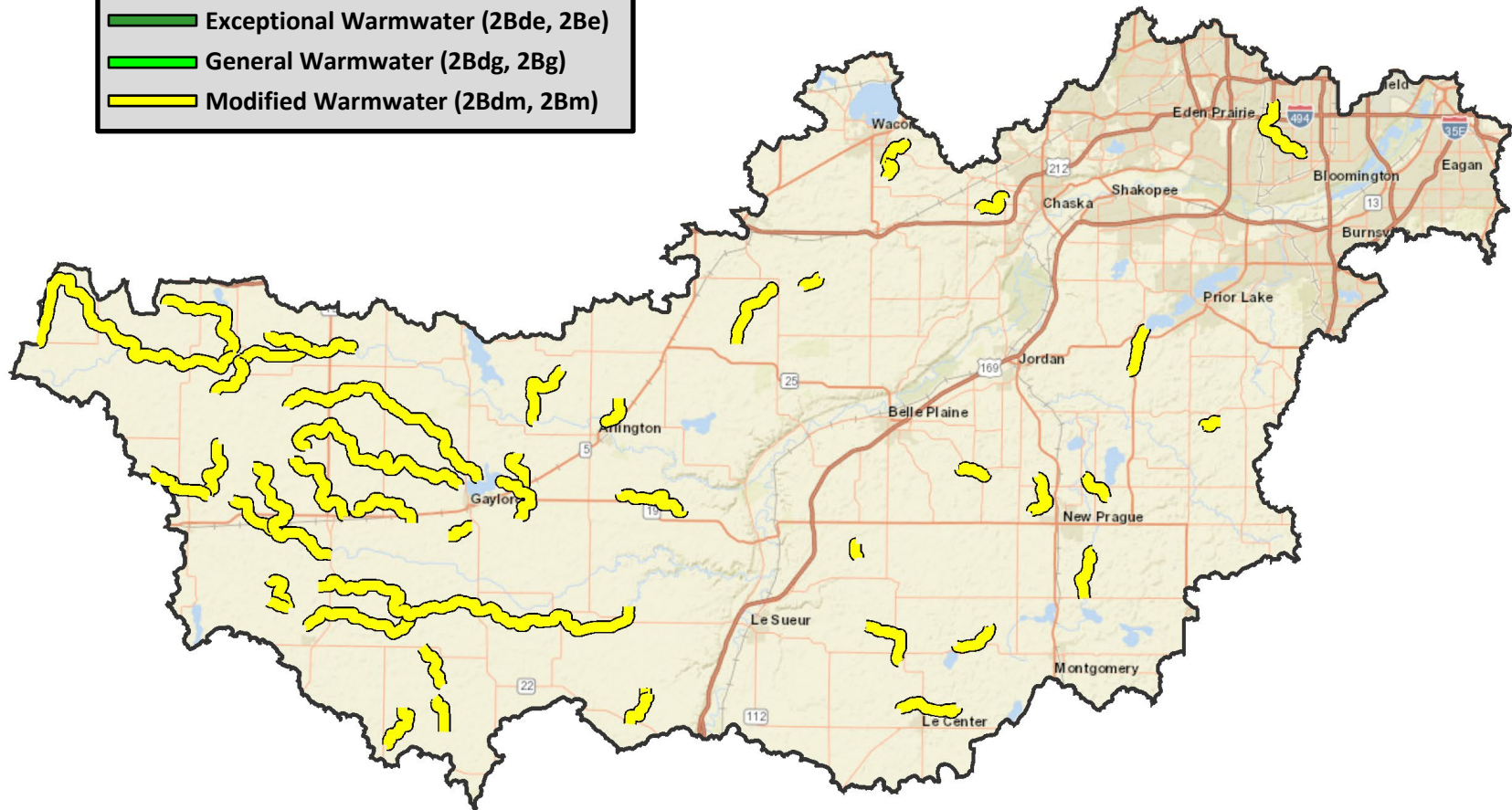
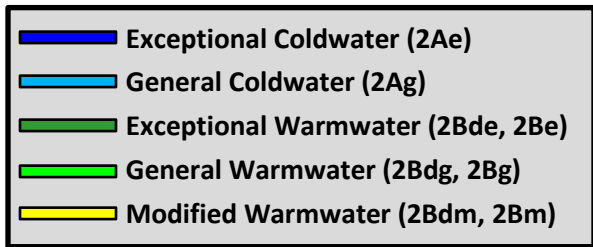
Minnesota River - Mankato (07020007)



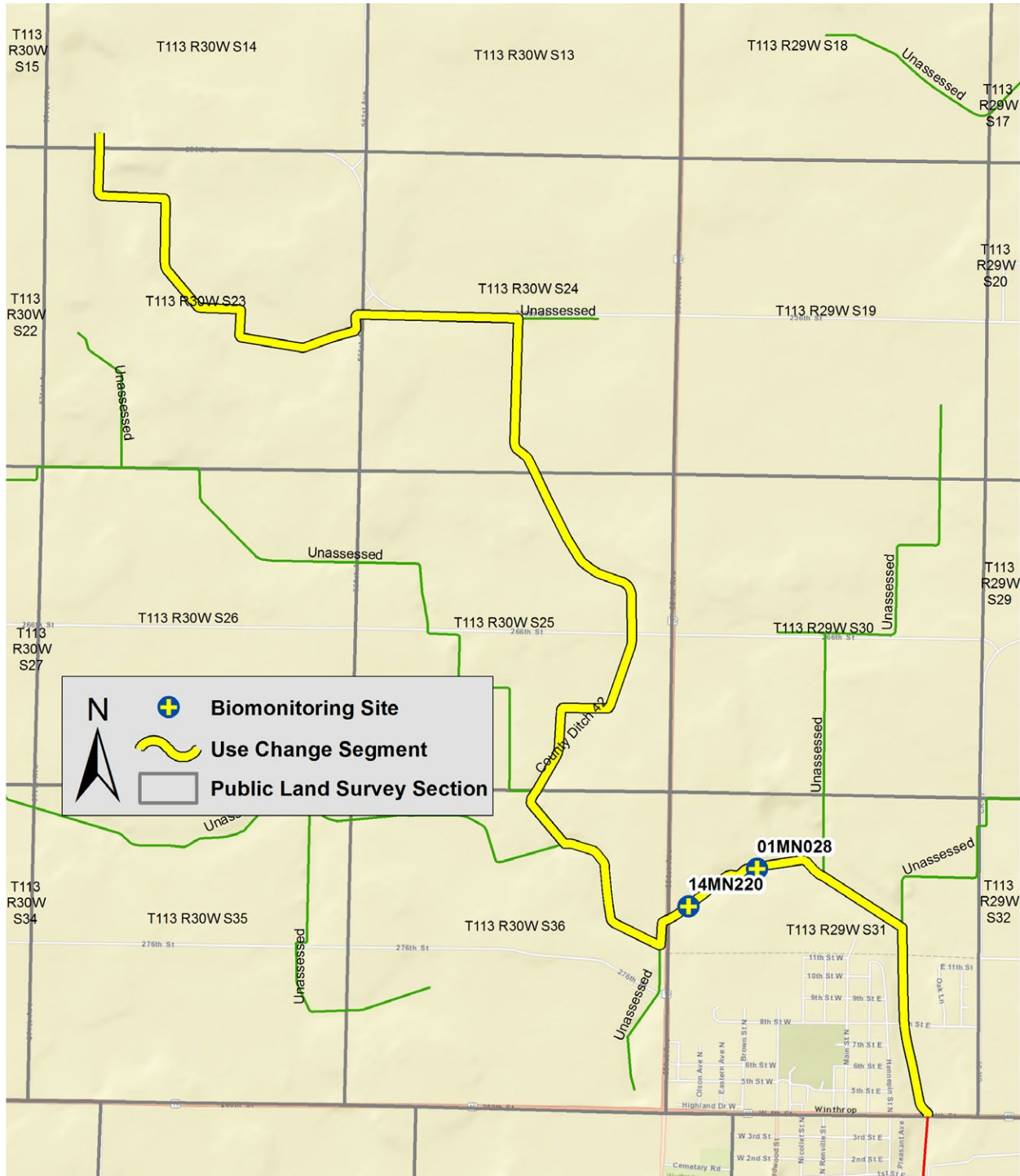
Unnamed creek (07020007-578)



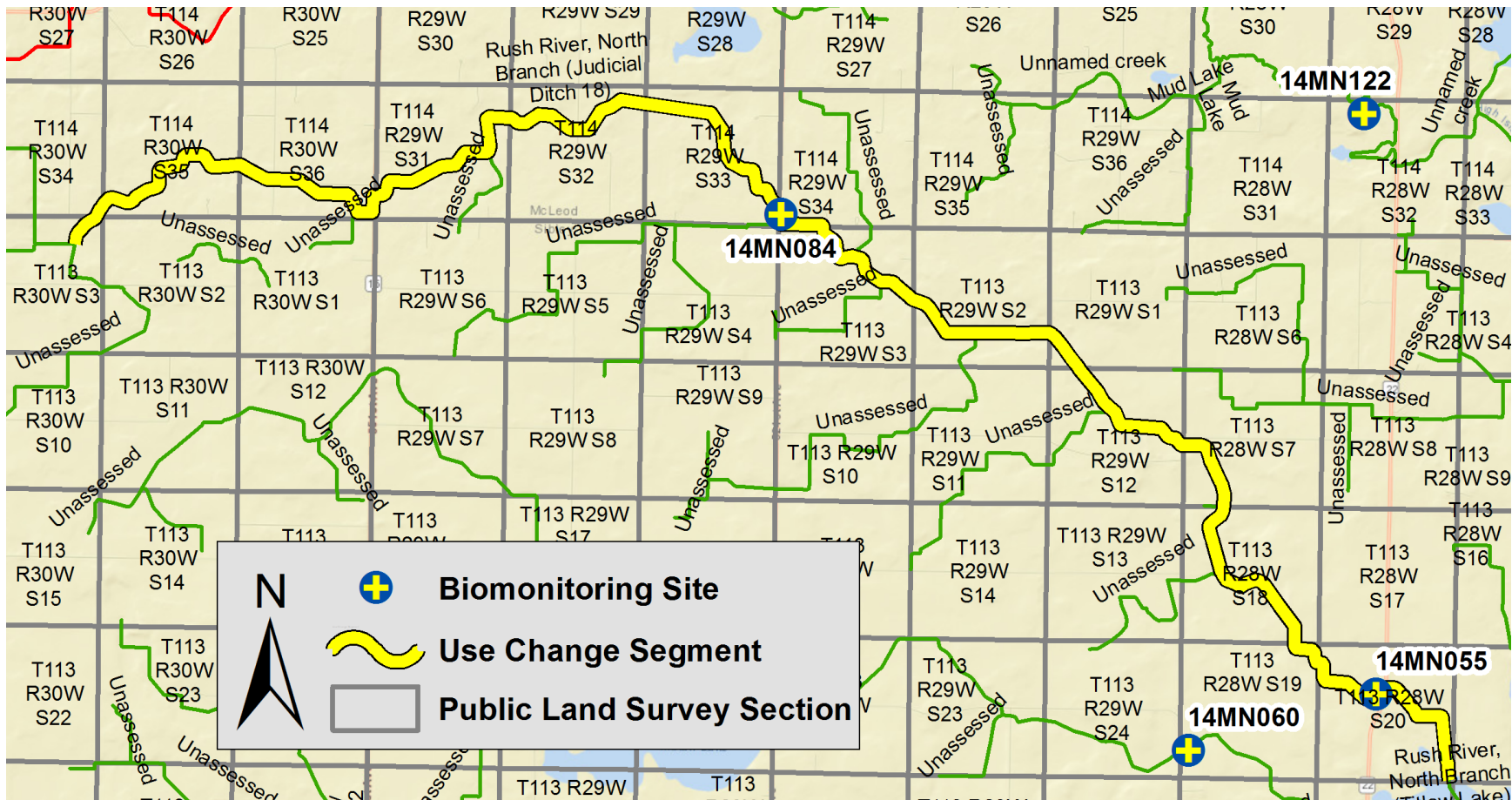
Minnesota River - Lower (07020012)



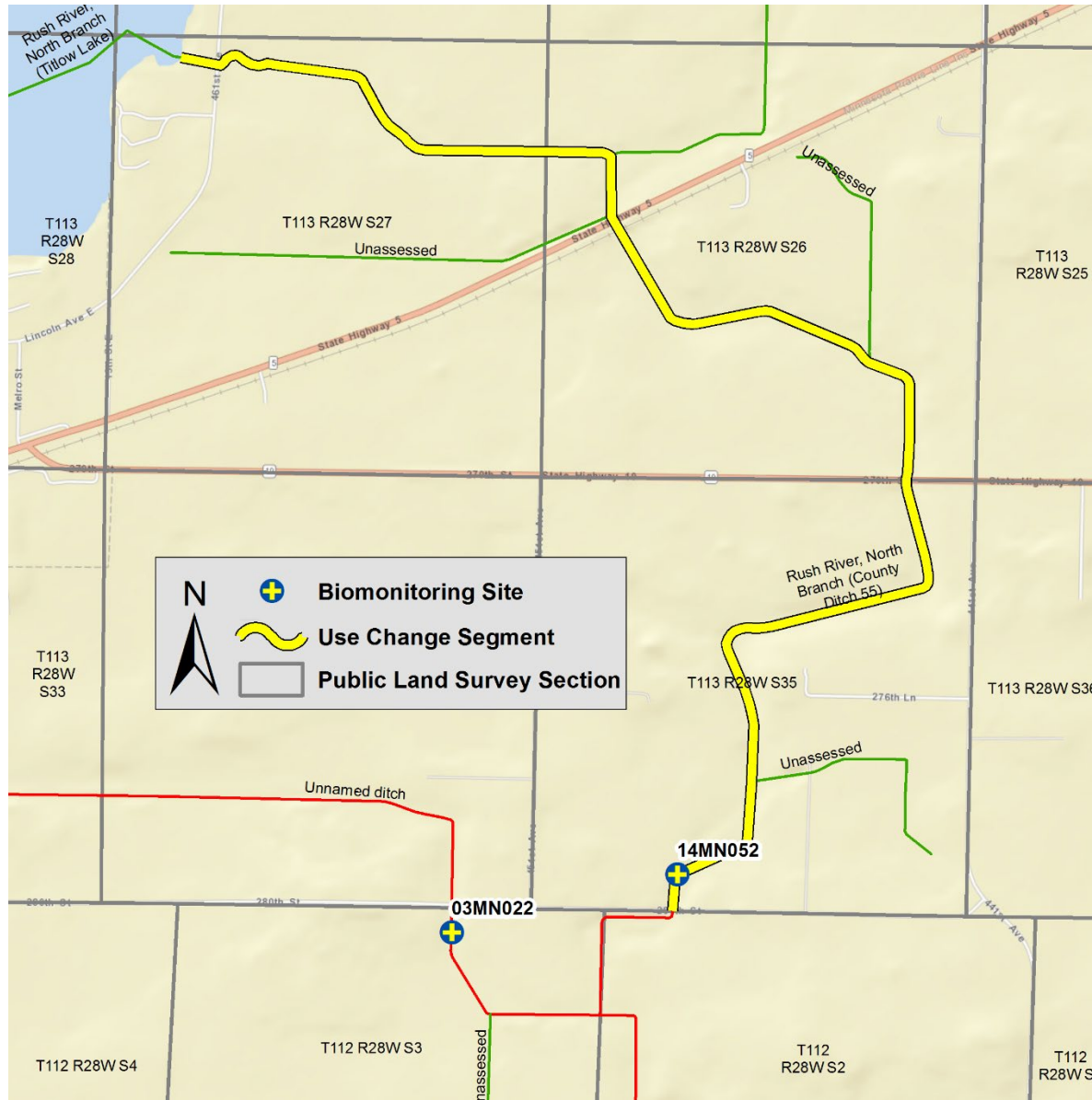
County Ditch 42 (07020012-551)



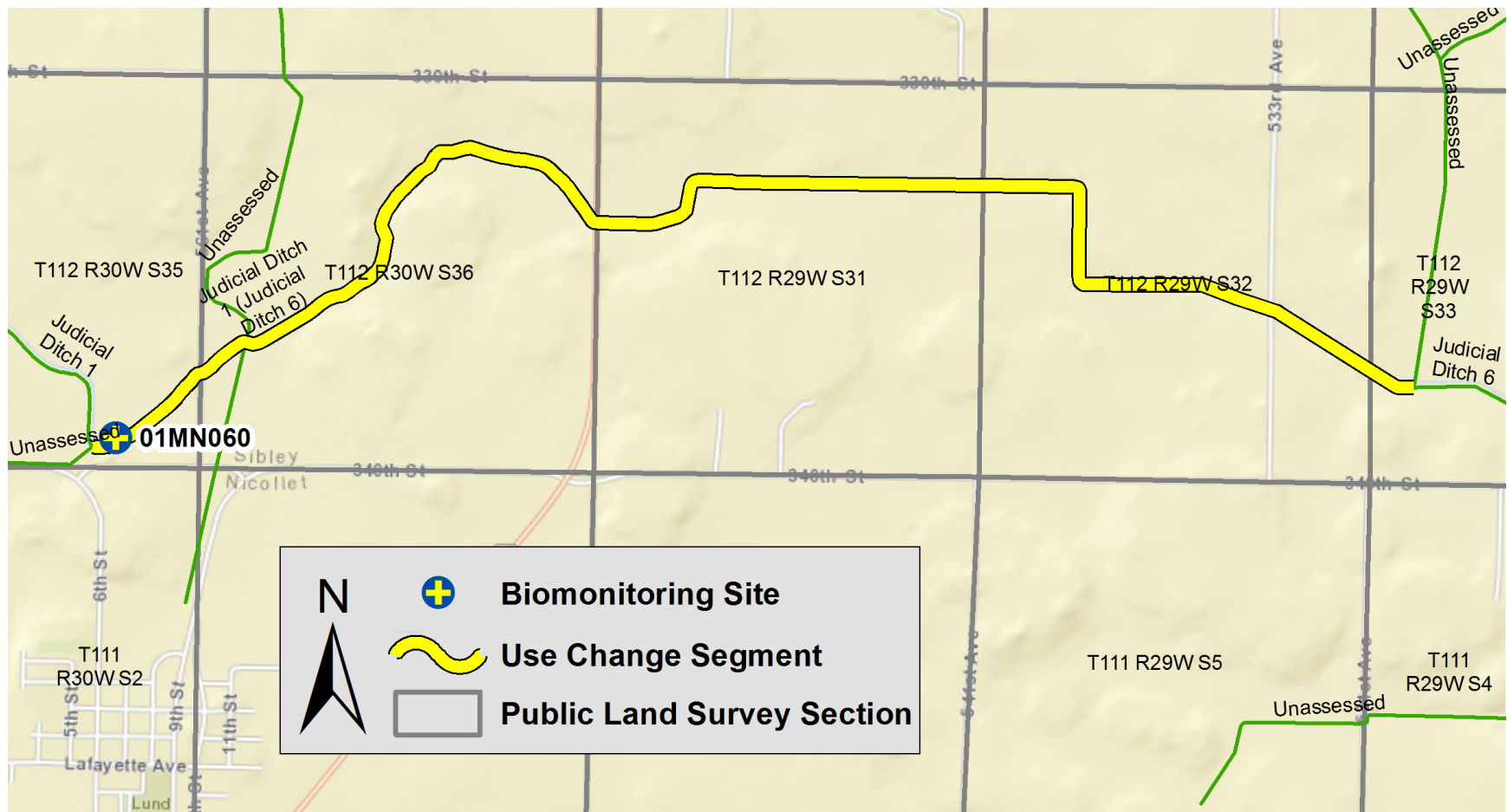
Rush River, North Branch (Judicial Ditch 18) (07020012-555)



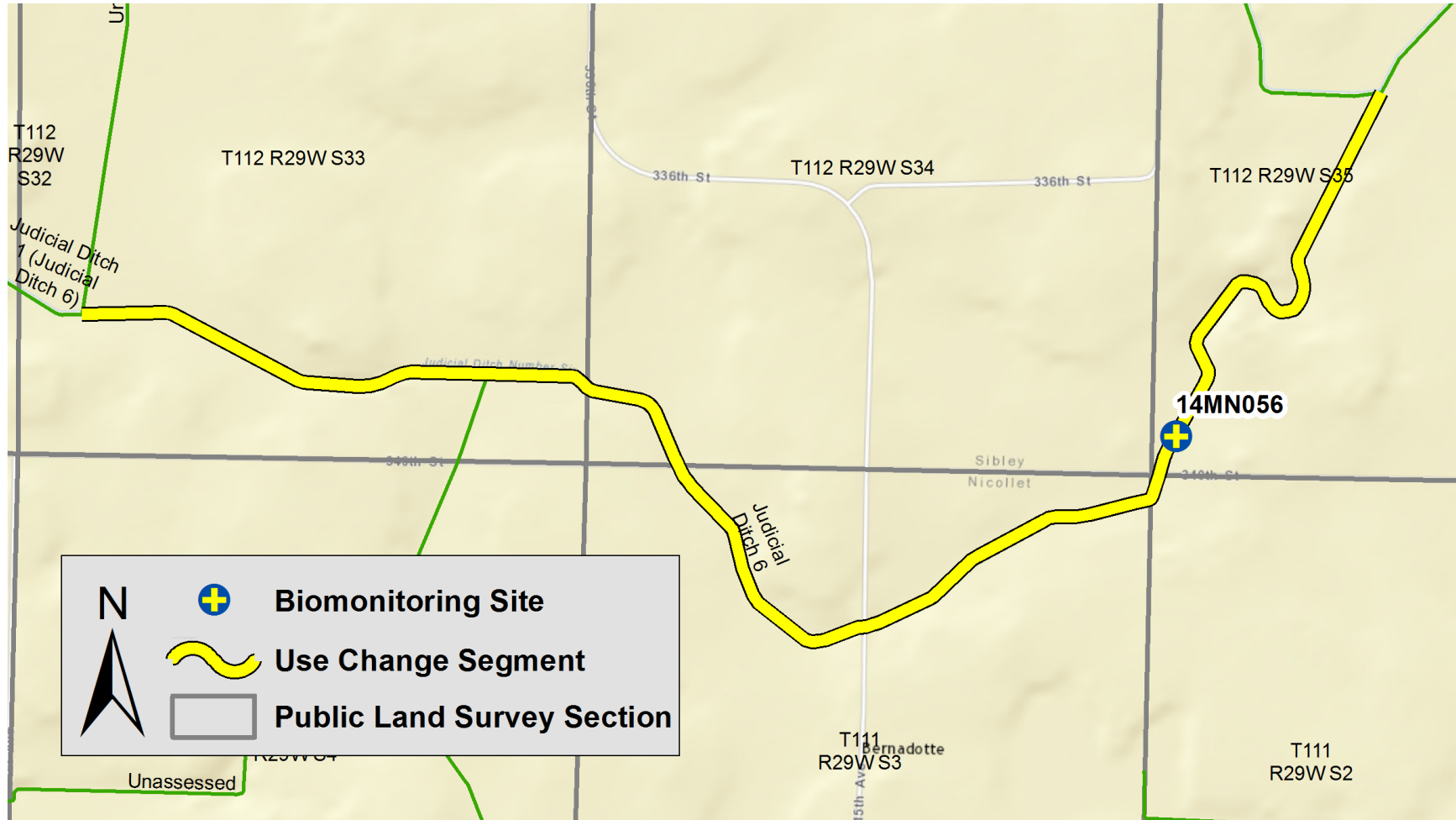
Rush River, North Branch (County Ditch 55) (07020012-556)



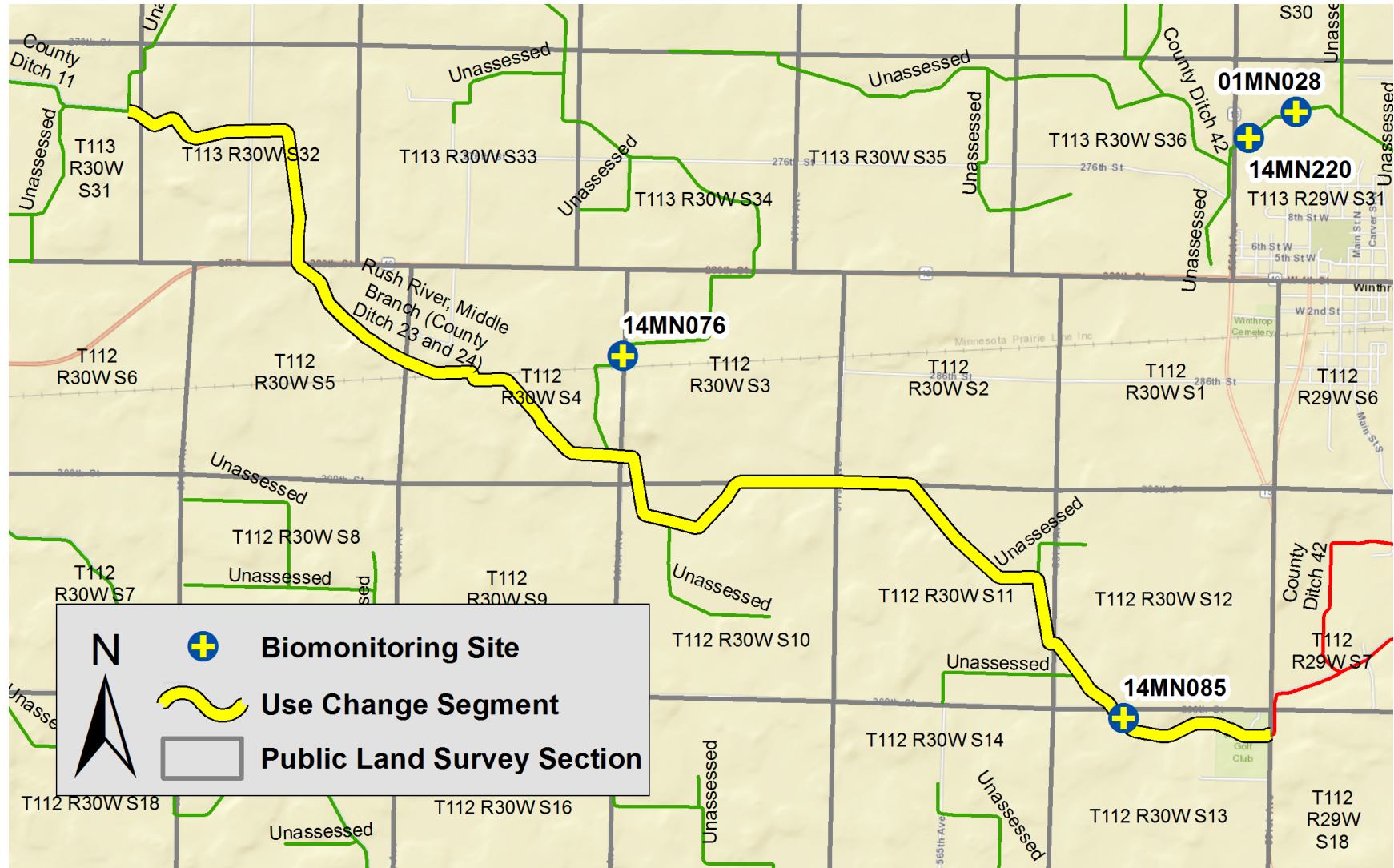
Judicial Ditch 1 (Judicial Ditch 6) (07020012-573)



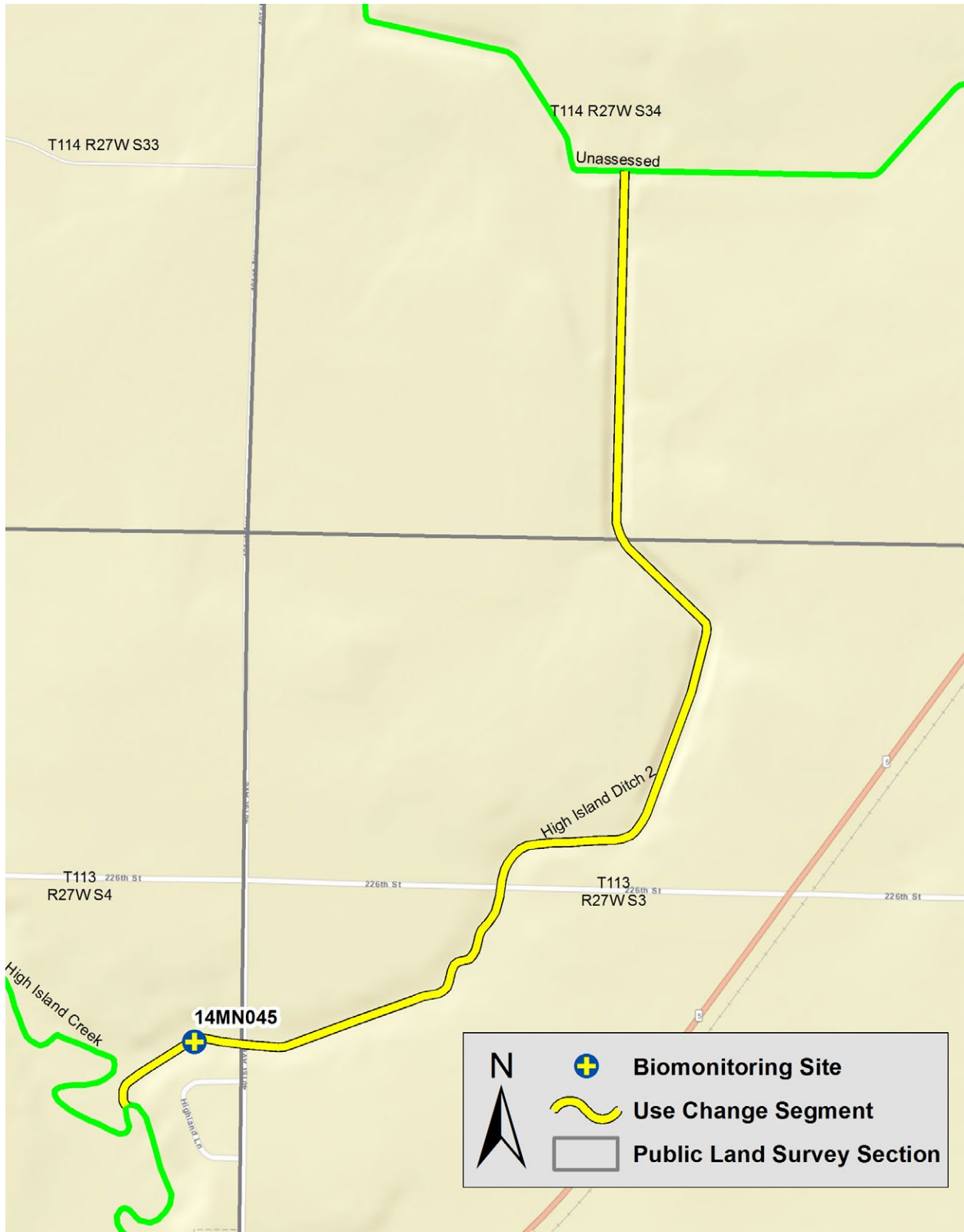
Judicial Ditch 6 (07020012-574)



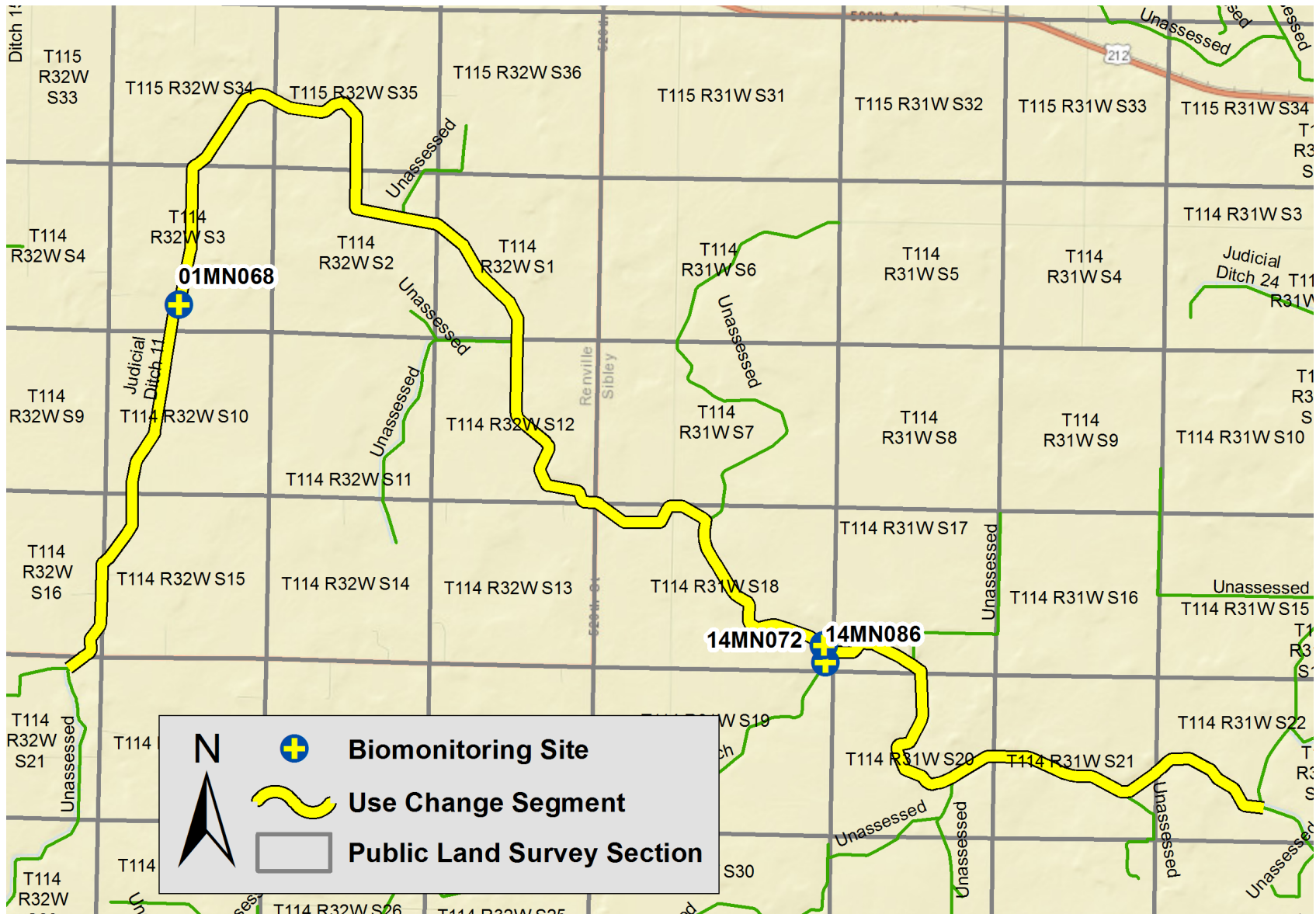
Rush River, Middle Branch (County Ditch 23 and 24) (07020012-586)



High Island Ditch 2 (07020012-588)



Judicial Ditch 11 (07020012-590)



Judicial Ditch 24 (07020012-591)



Judicial Ditch 11 (07020012-593)

