

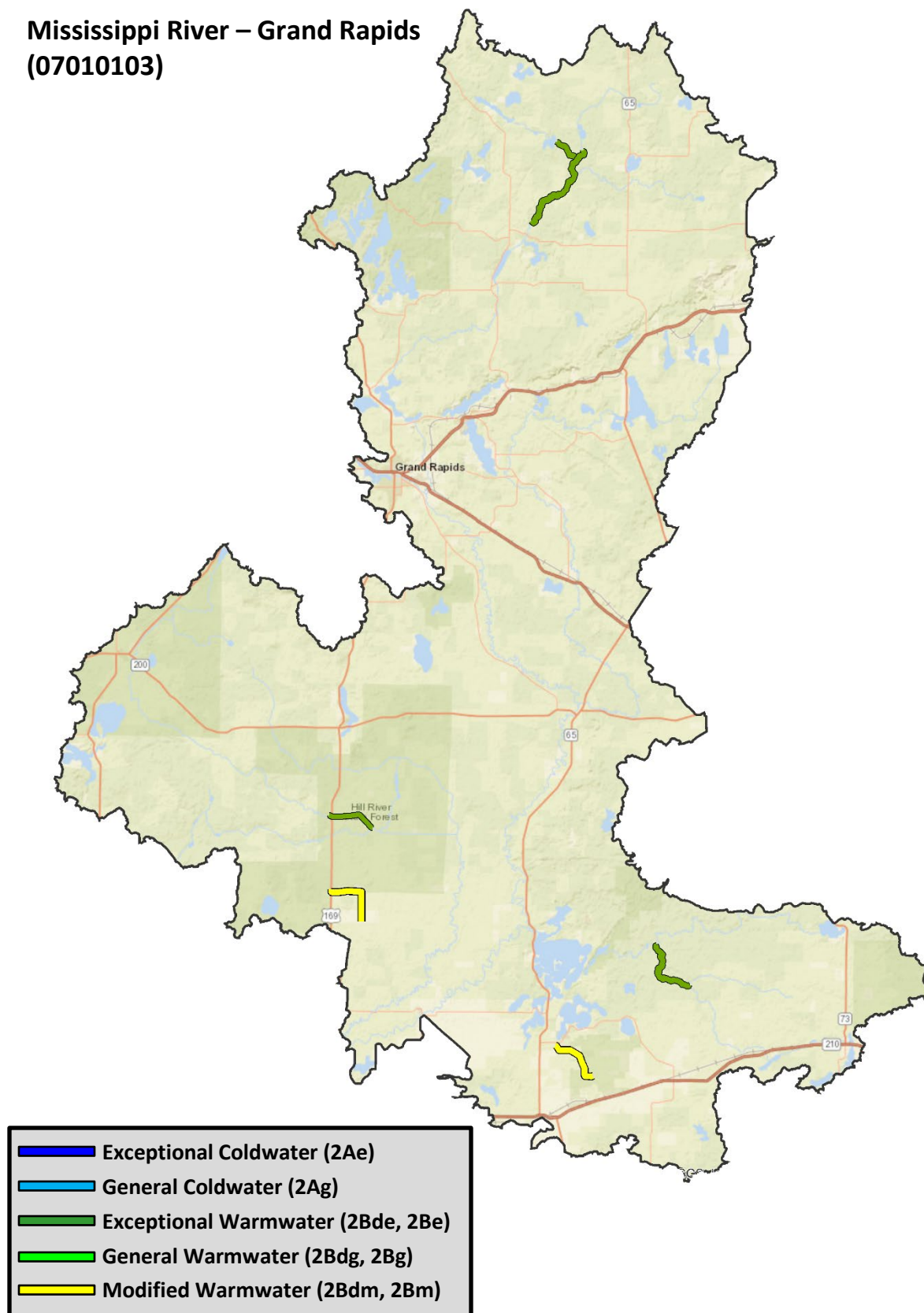
Appendix D: Maps of designated use changes - Upper Mississippi River Basin

Watersheds

1. Mississippi River – Grand Rapids (07010103)
2. Crow Wing River (07010106)
3. Redeye River (07010107)
4. Long Prairie River (07010108)
5. Mississippi River - St. Cloud (07010203)

wq-rule4-21a4

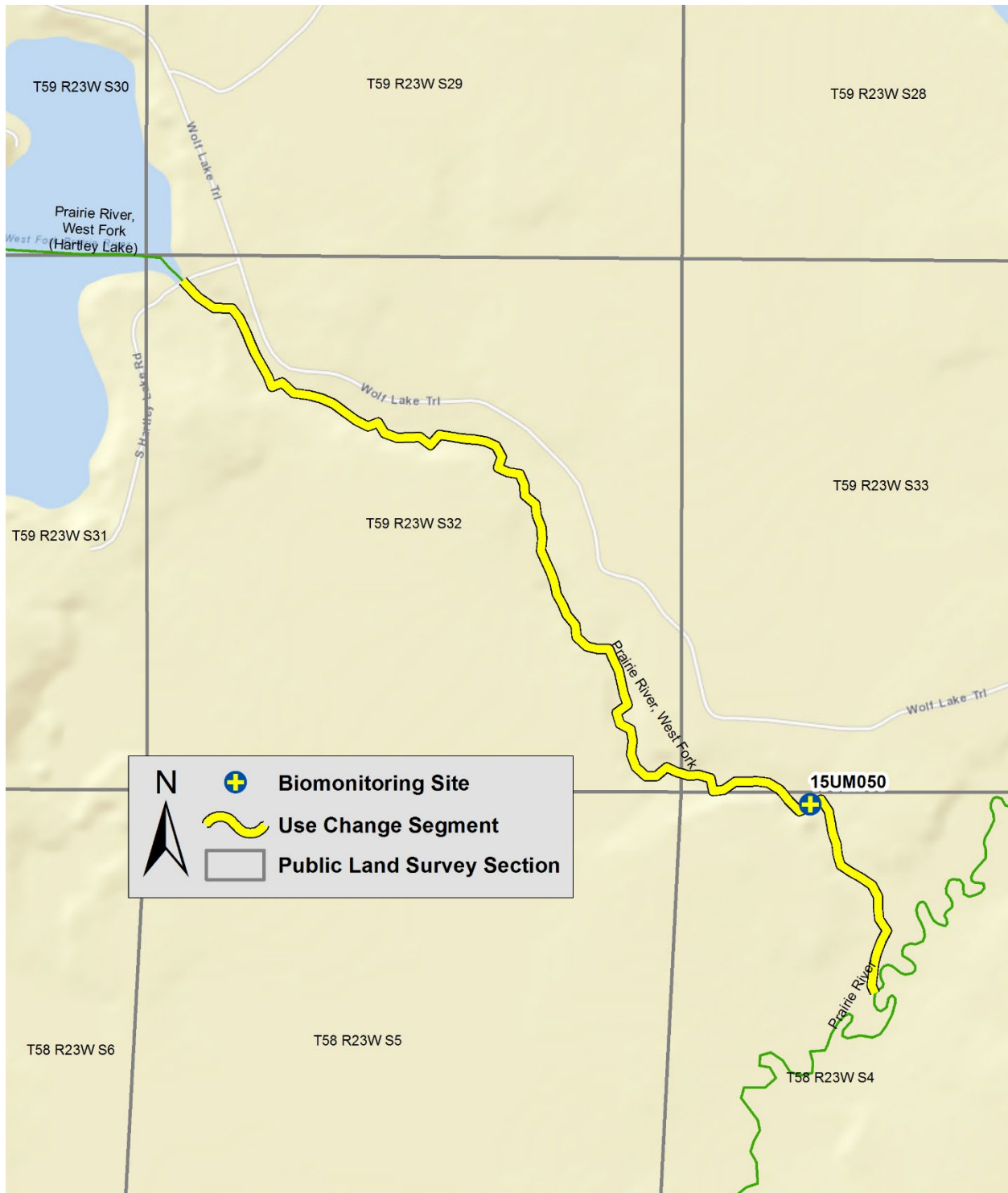
Mississippi River – Grand Rapids (07010103)



Minnewawa Creek (07010103-518)



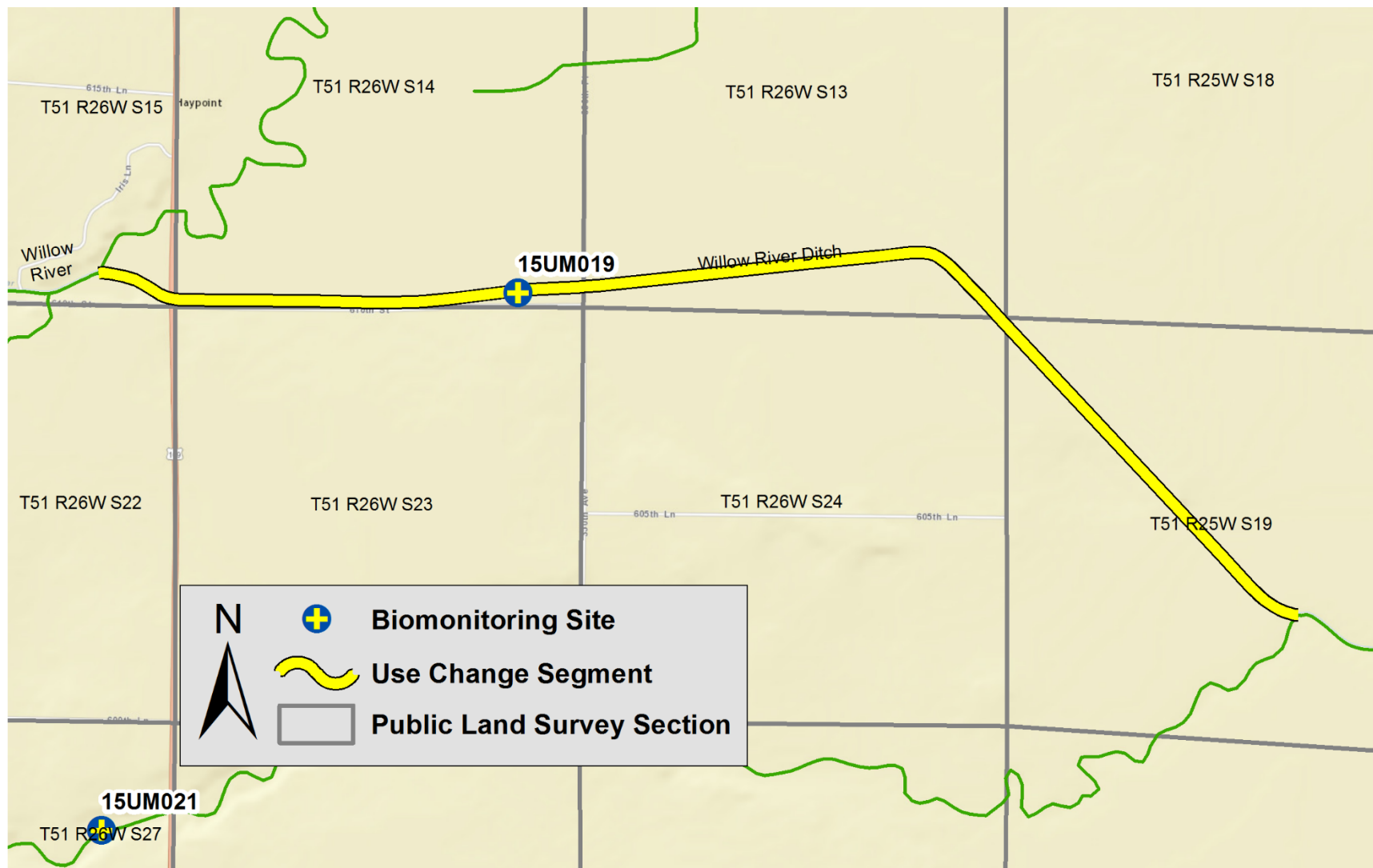
Prairie River, West Fork (07010103-571)



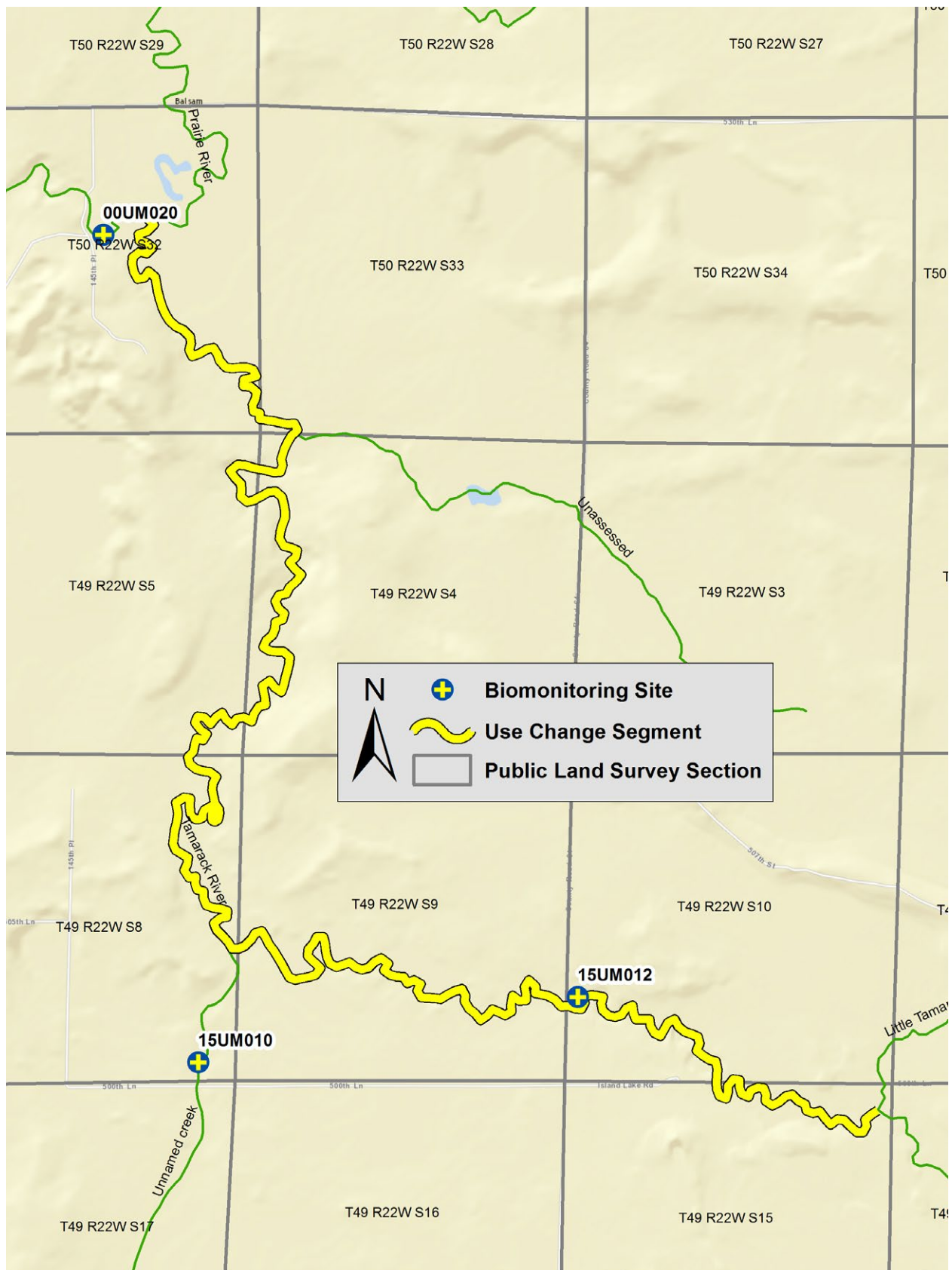
Unnamed Ditch (07010103-572)



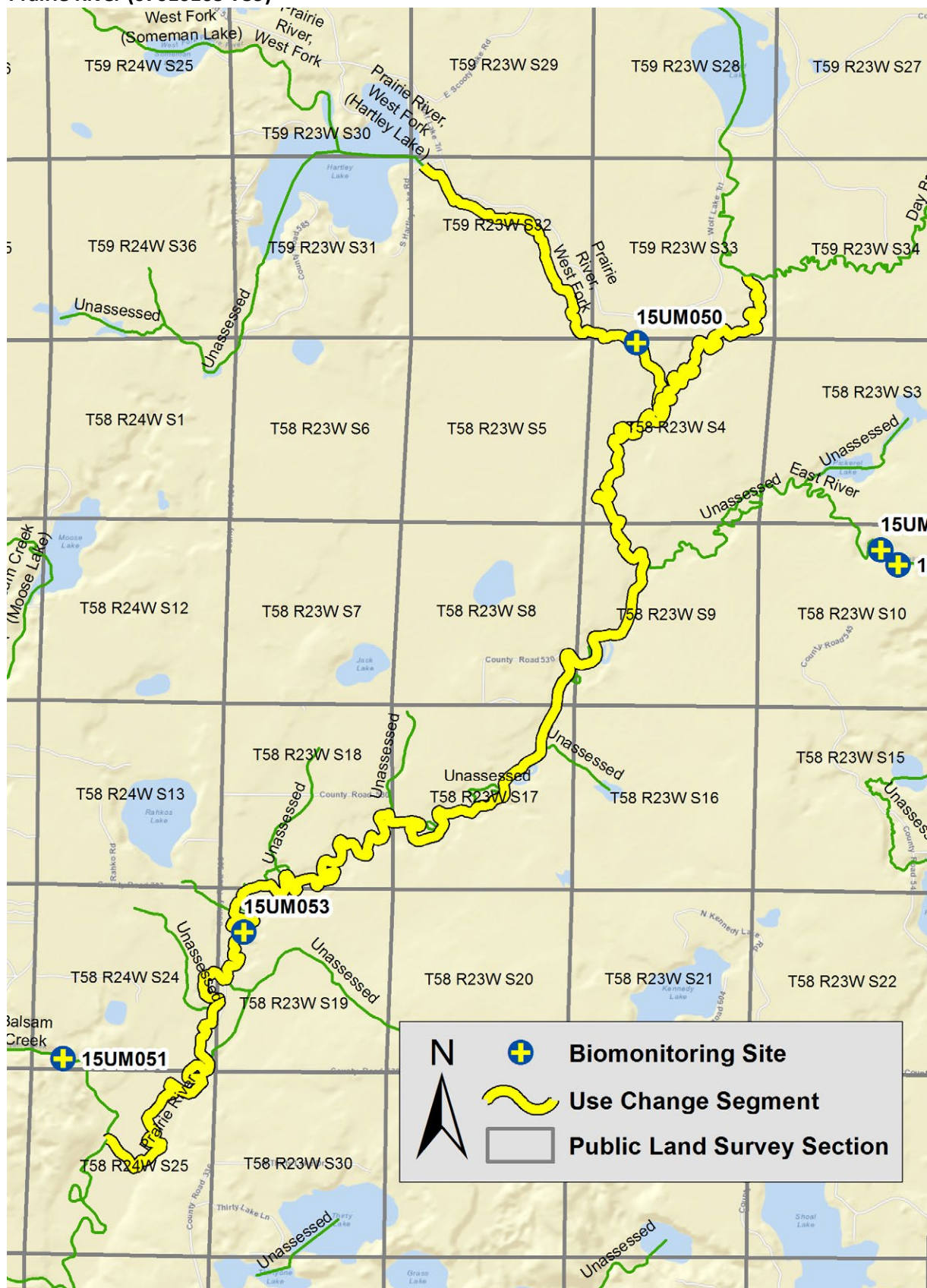
Willow River Ditch (07010103-716)



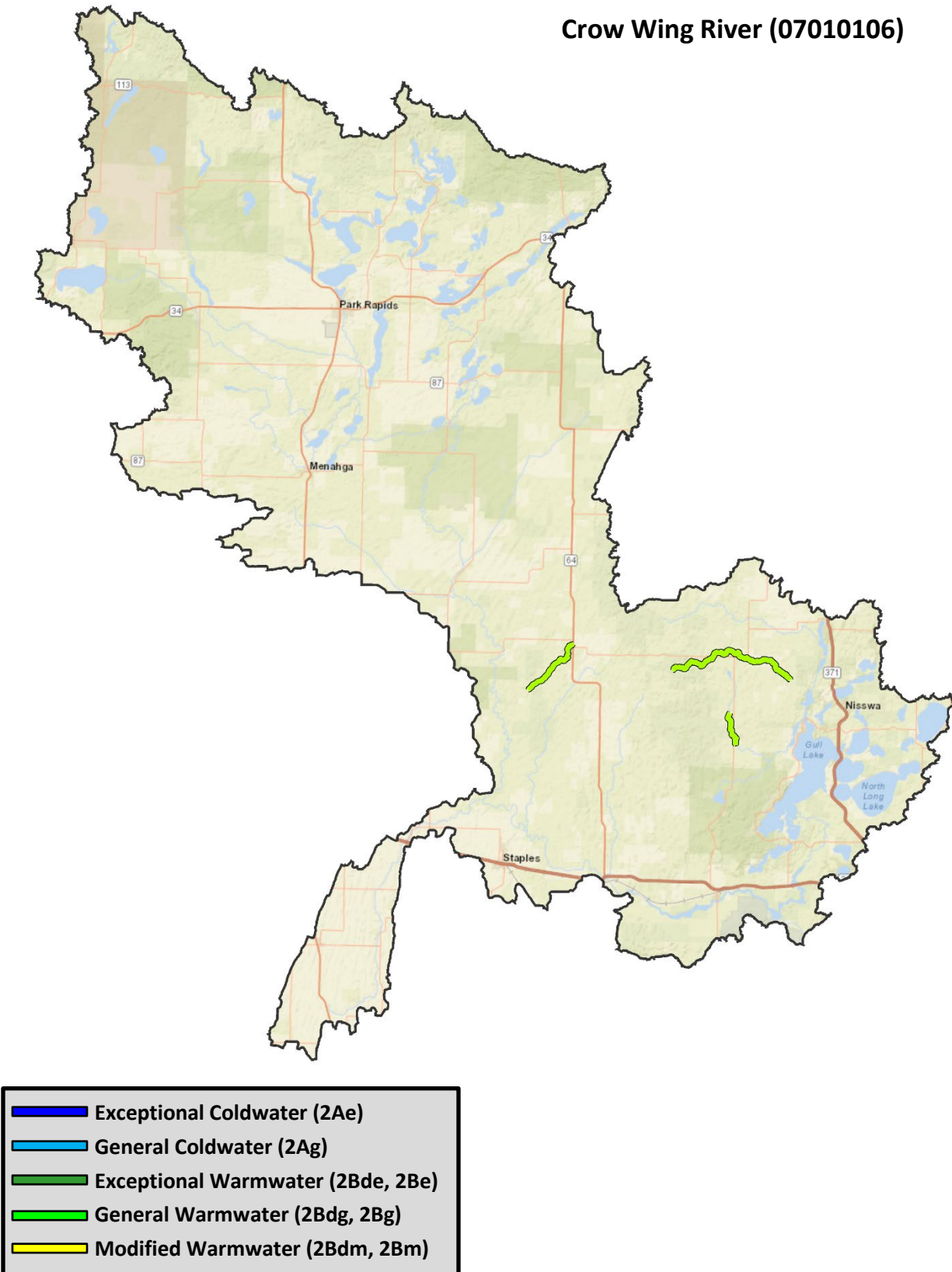
Tamarack River (07010103-758)



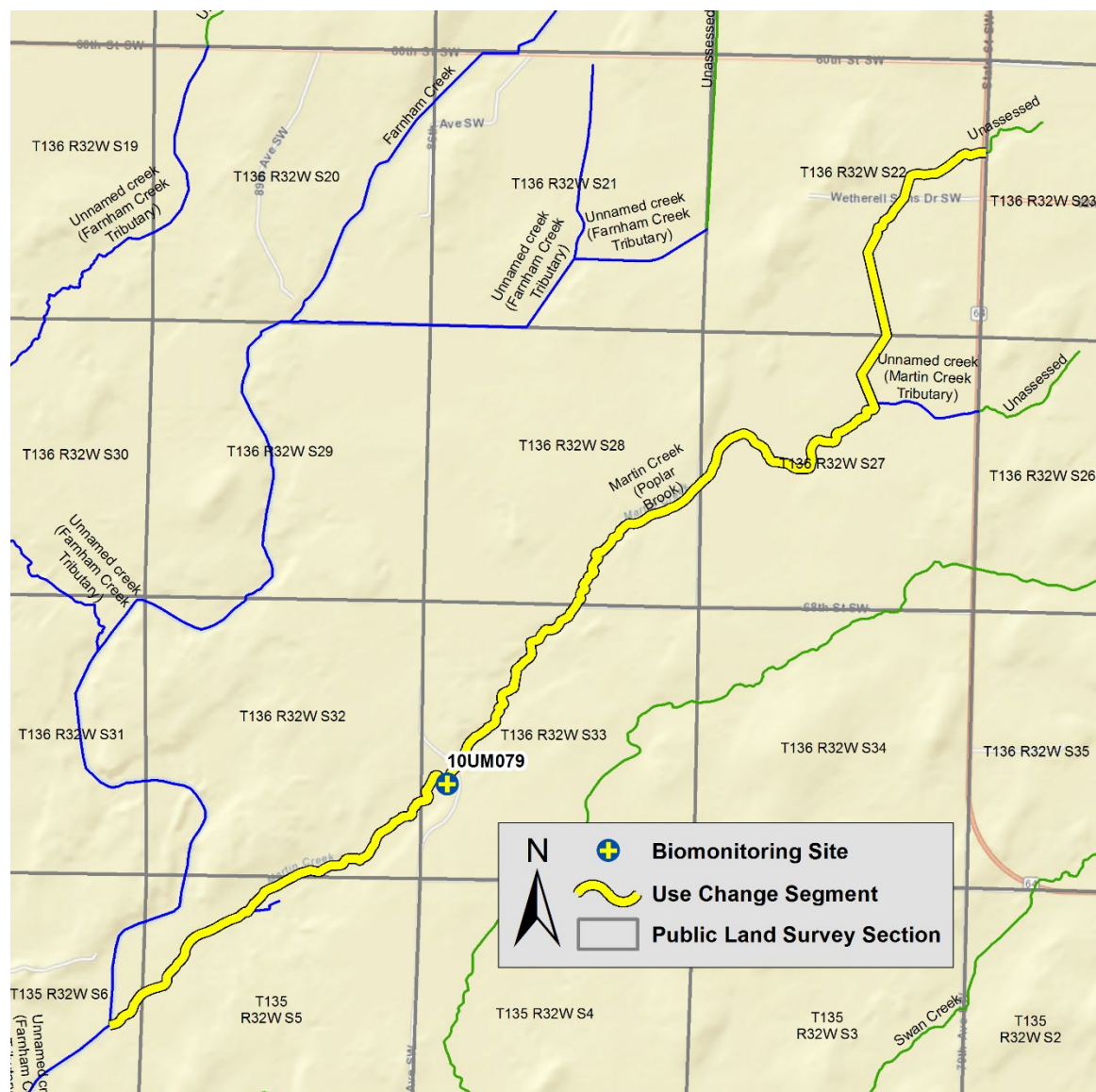
Prairie River (07010103-759)



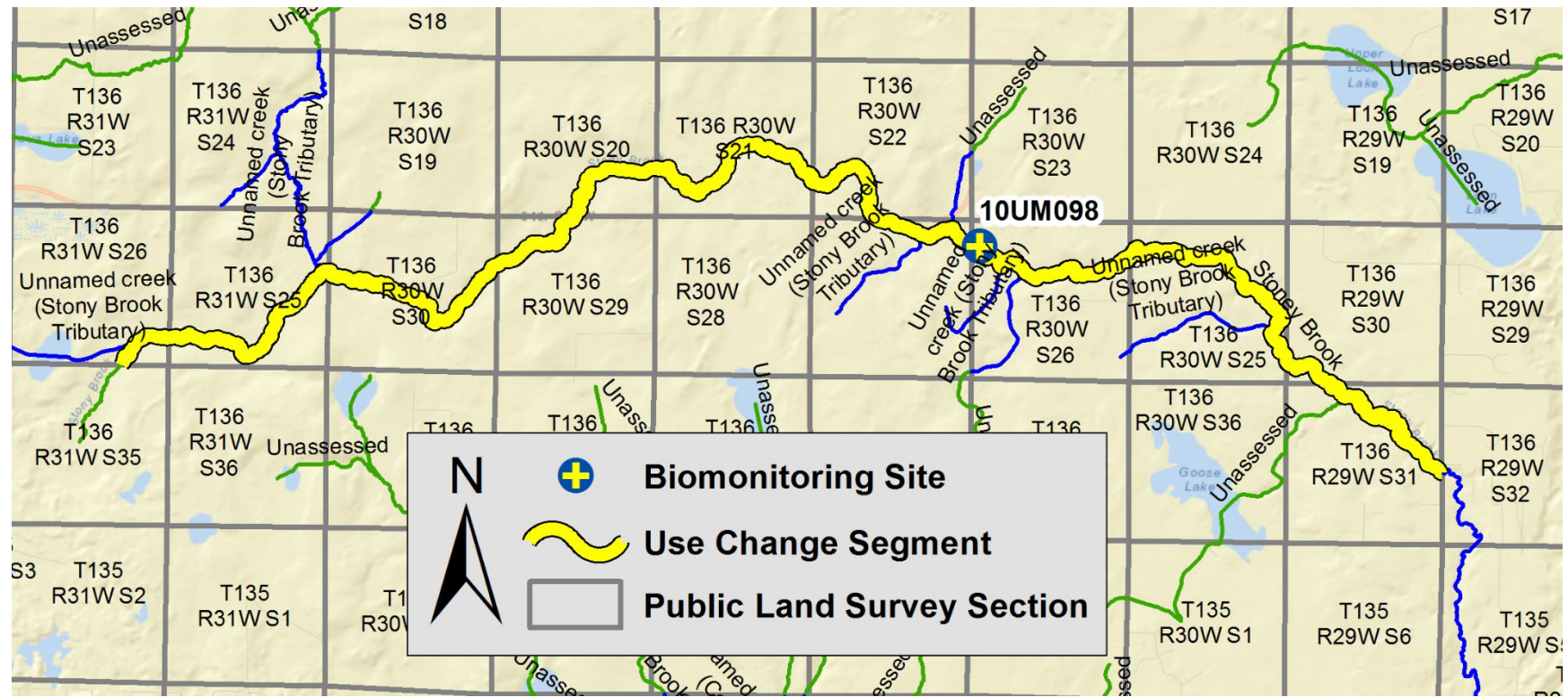
Crow Wing River (07010106)



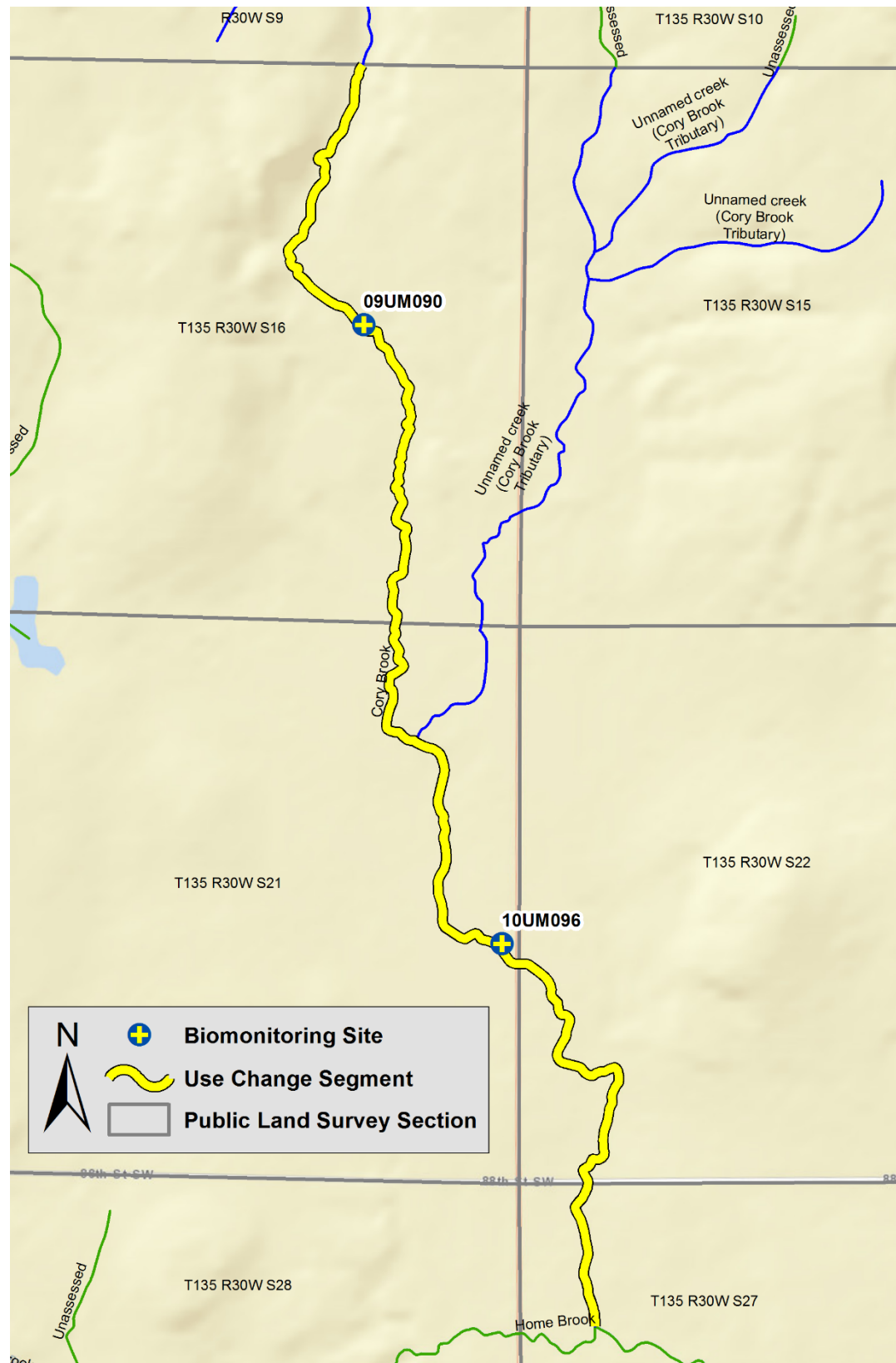
Martin Creek (Poplar Brook) (07010106-588)



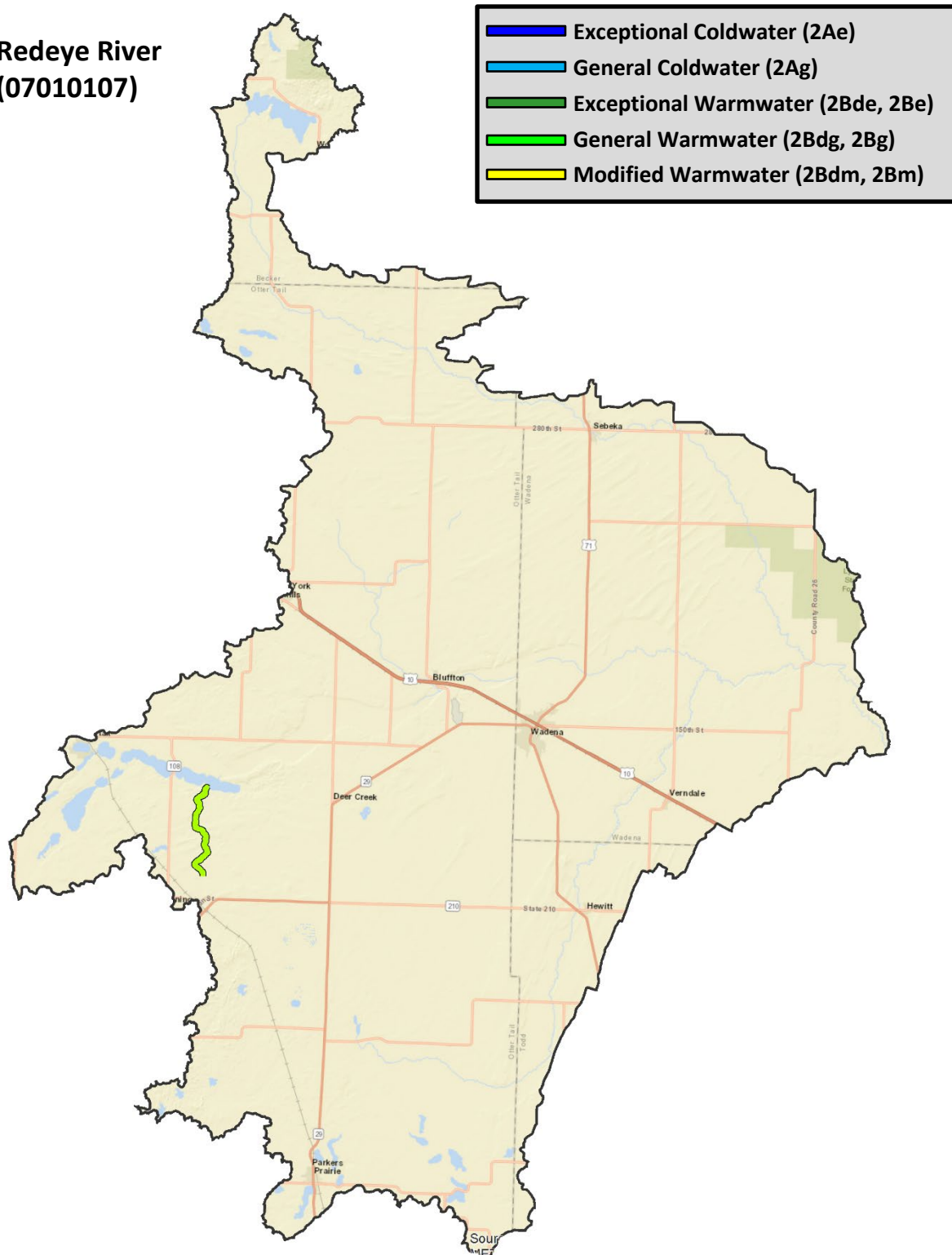
Stoney Brook (07010106-699)



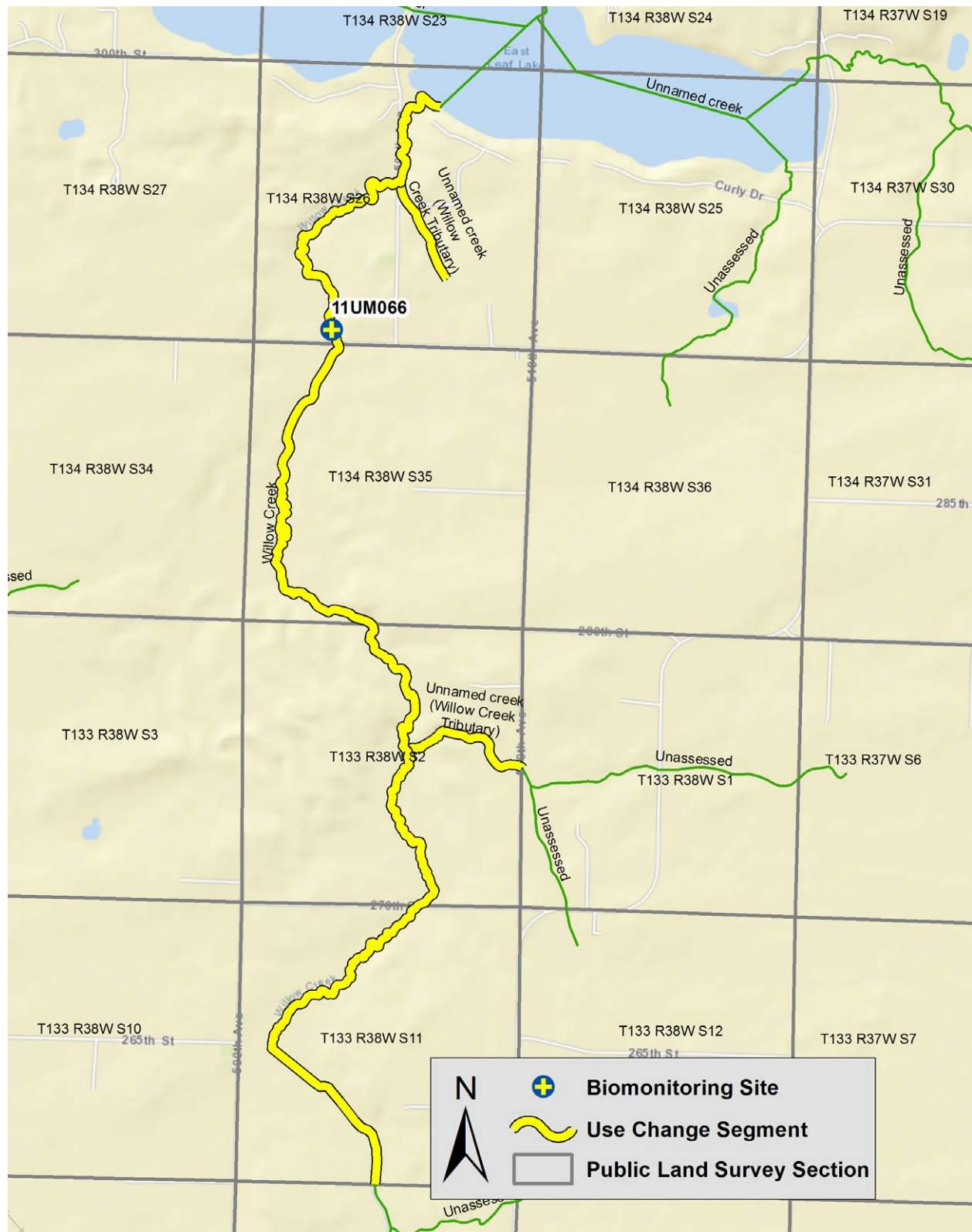
Cory Brook (07010106-700)



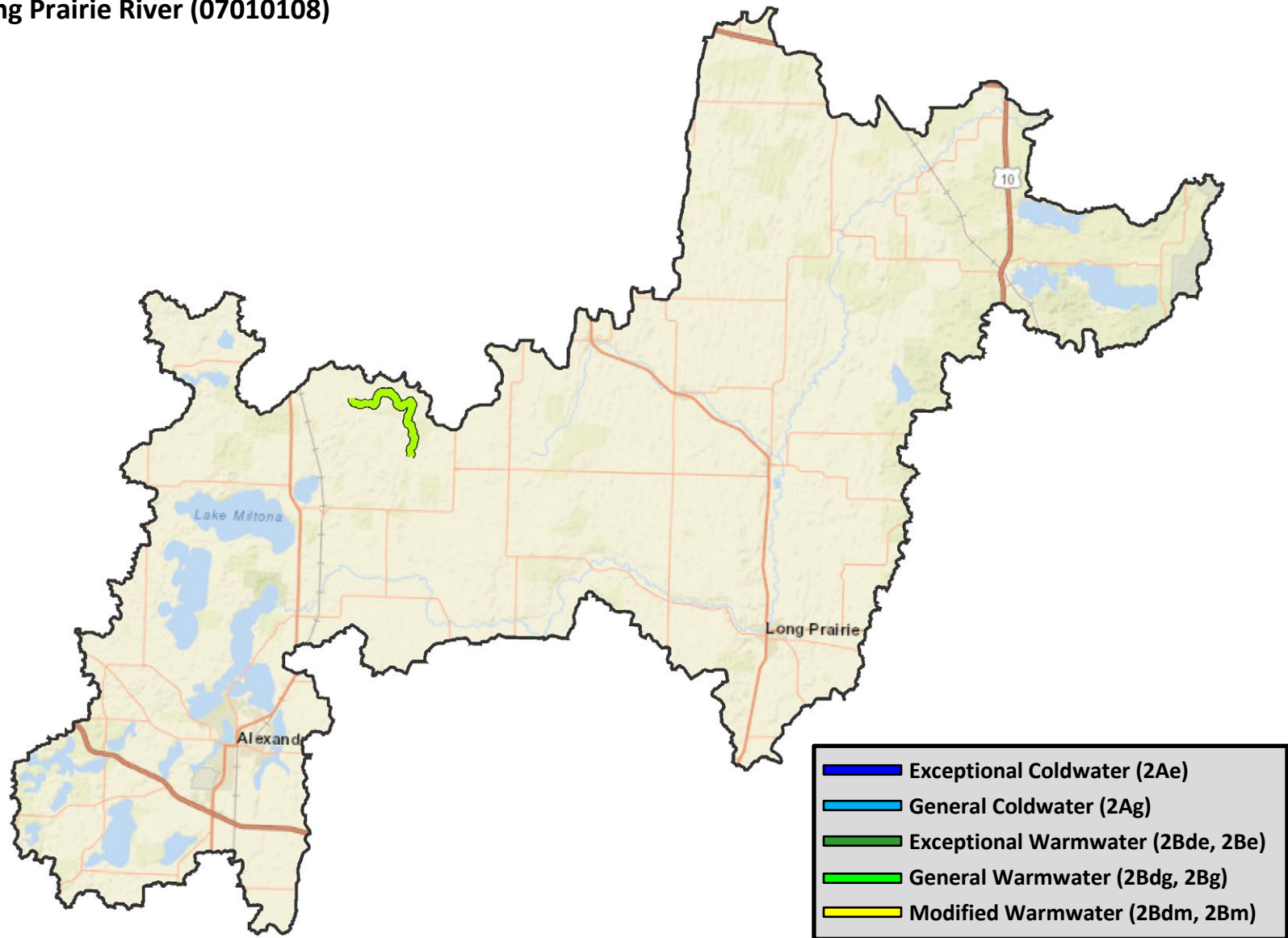
Redeye River (07010107)



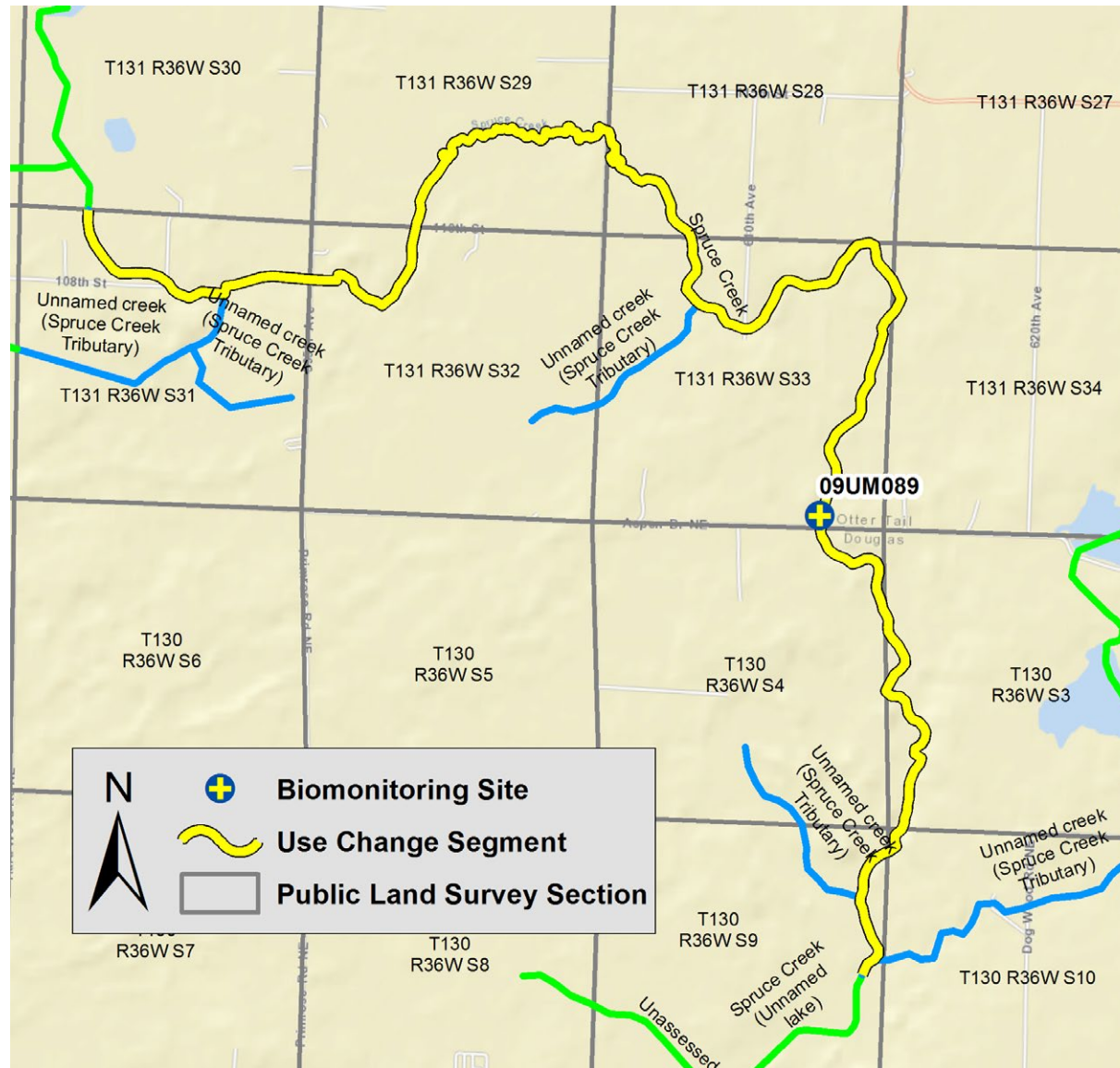
Willow Creek (07010107-525)



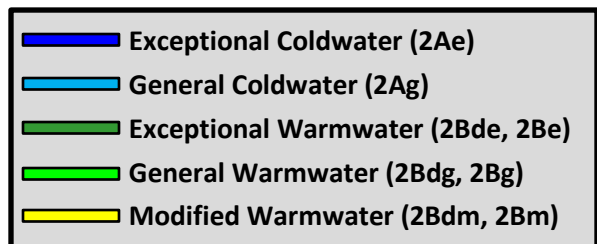
Long Prairie River (07010108)



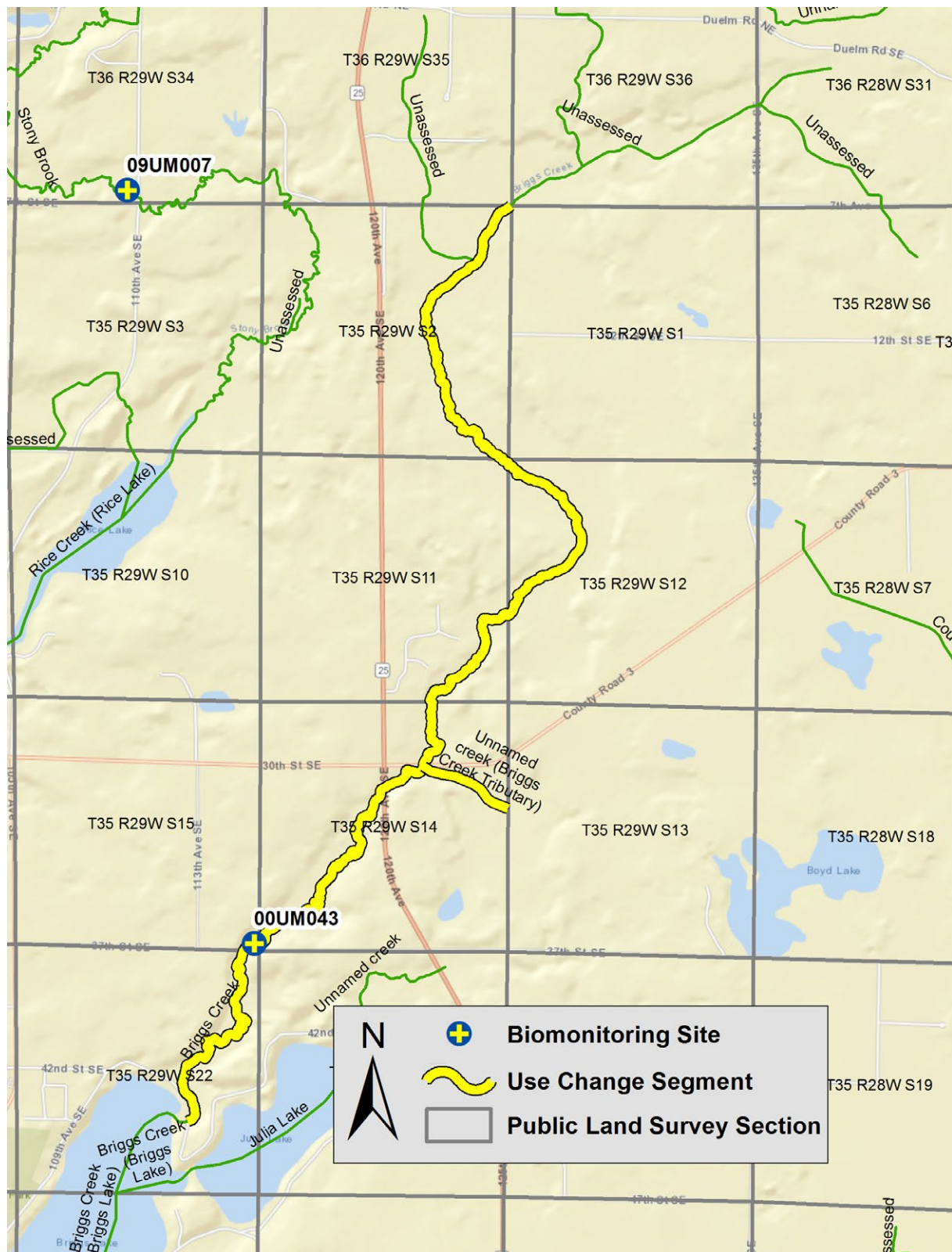
Spruce Creek (07010108-512)

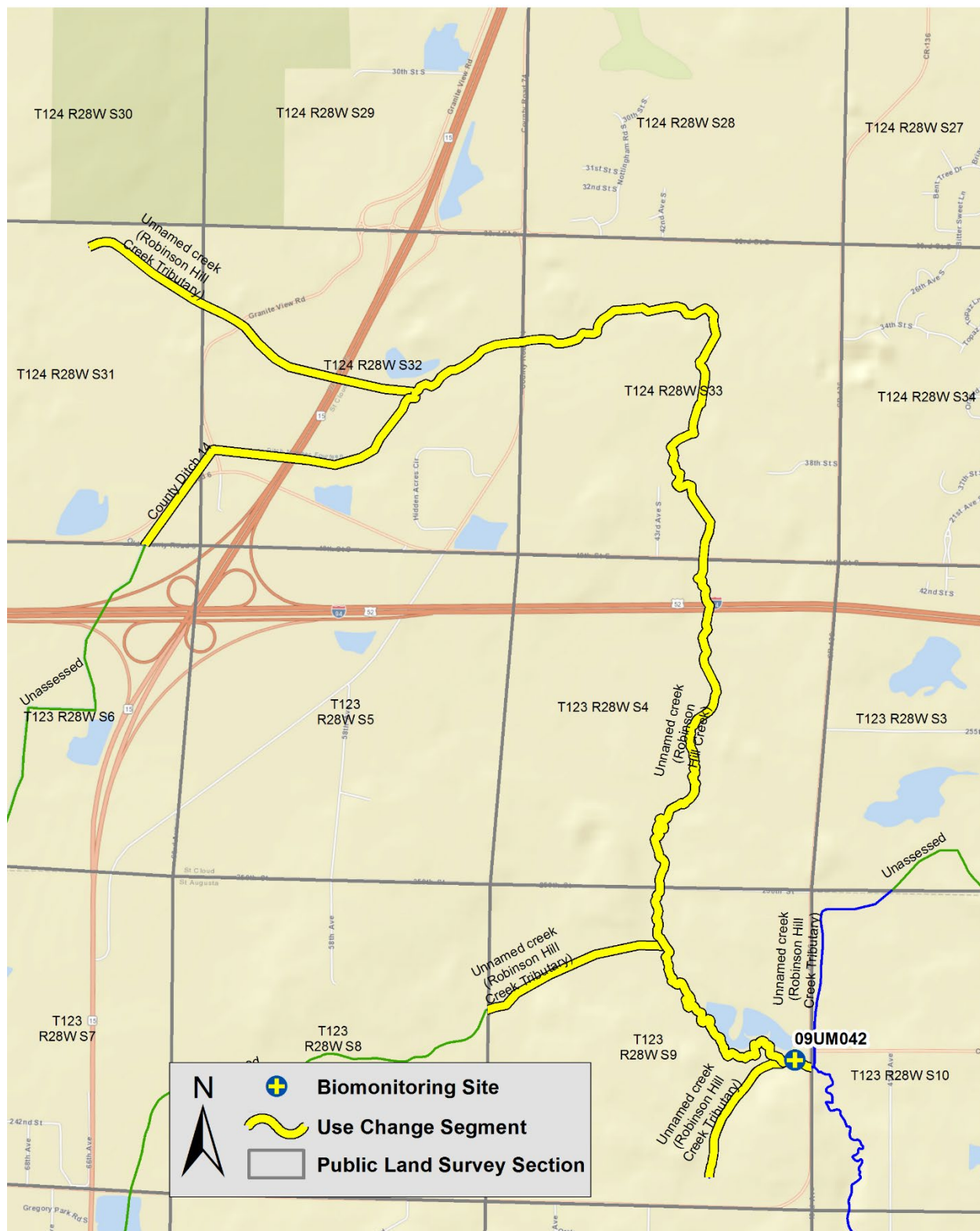


Mississippi River - St. Cloud (07010203)



Briggs Creek (07010203-538)





Unnamed creek (Robinson Hill Creek) (07010203-724)