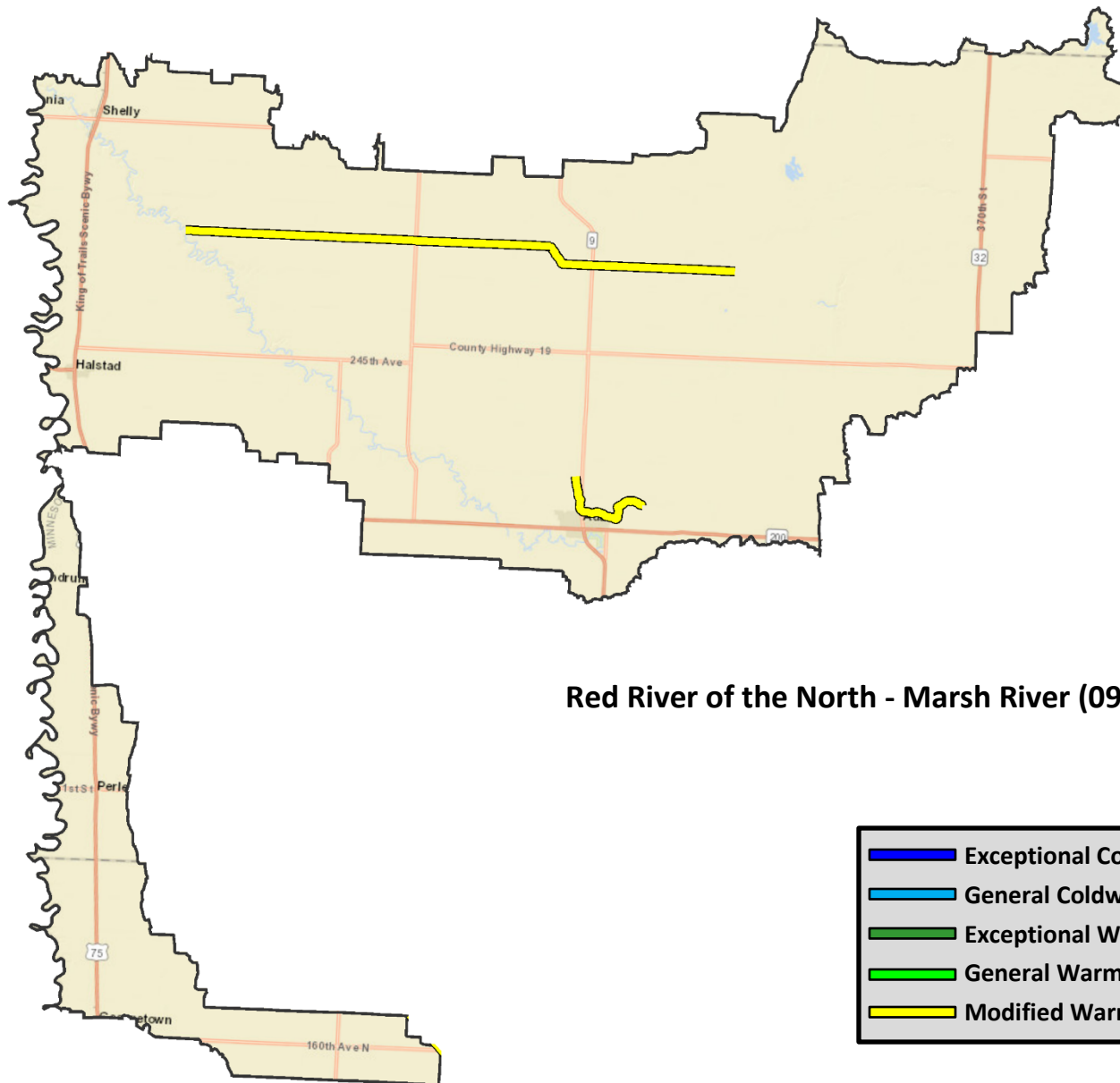


# Appendix C: Maps of designated use changes - Red River of the North Basin

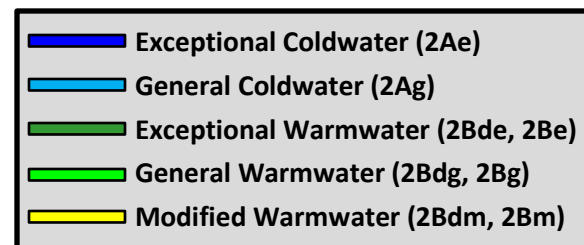
## Watersheds

1. Red River of the North - Marsh River (09020107)
2. Wild Rice River (09020108)
3. Clearwater River (09020305)

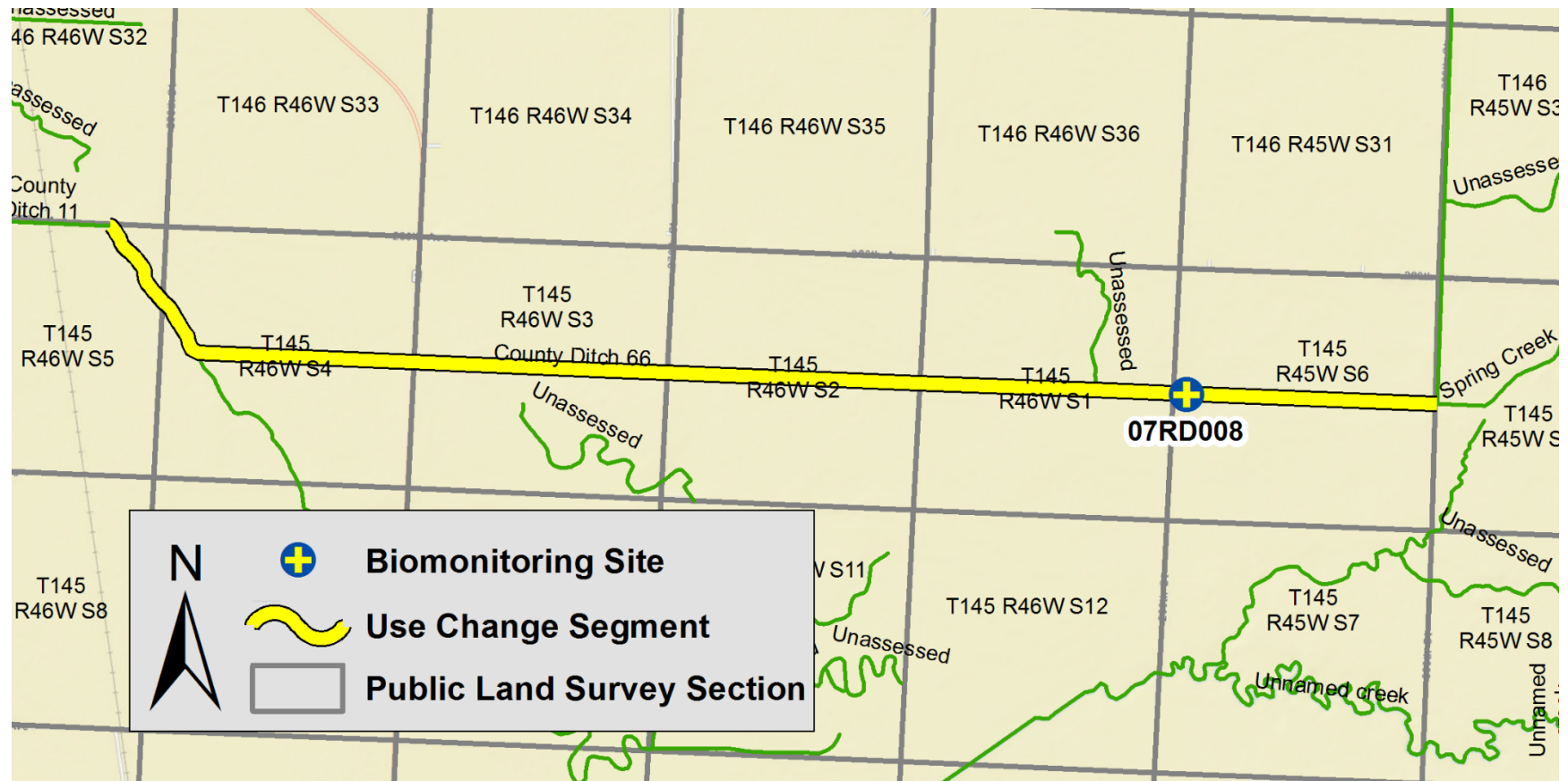
wq-rule4-21a3



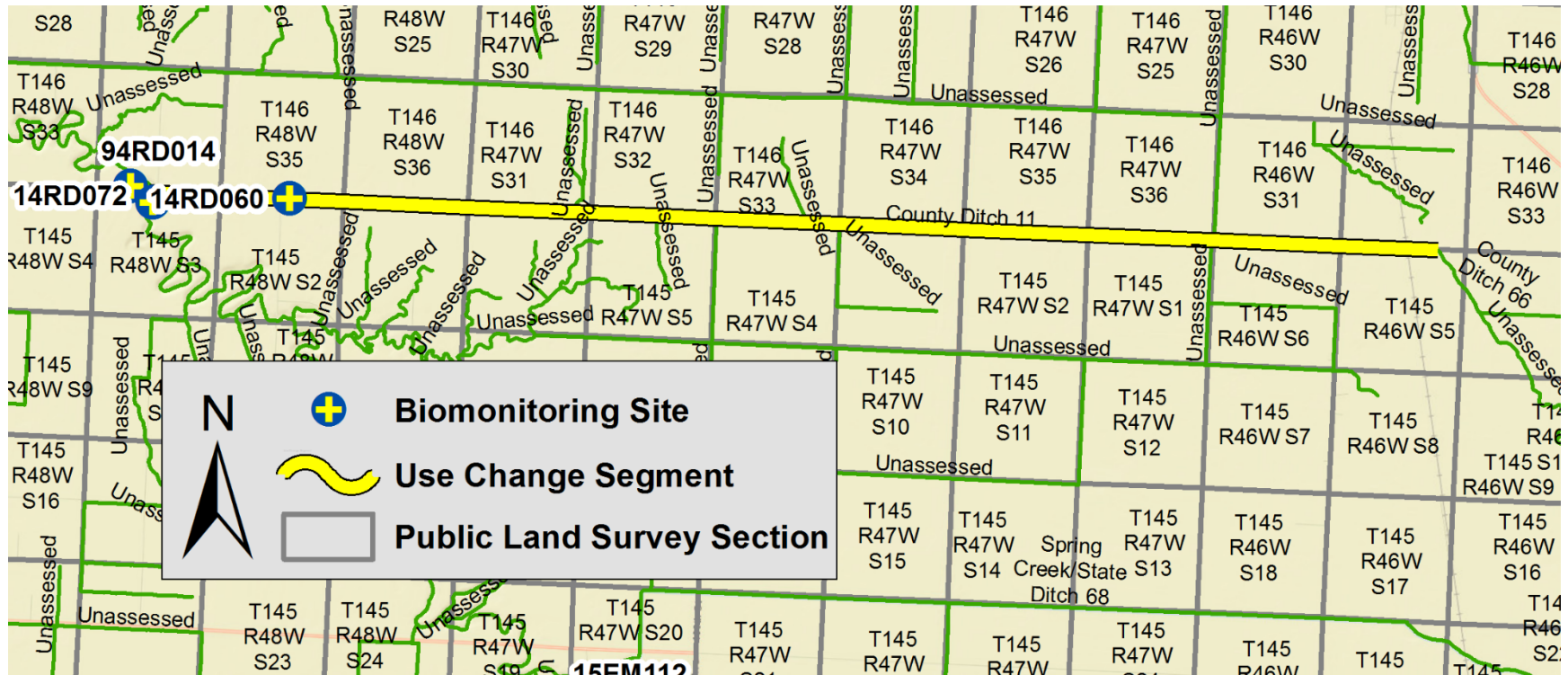
**Red River of the North - Marsh River (09020107)**



**County Ditch 66 (09020107-516)**

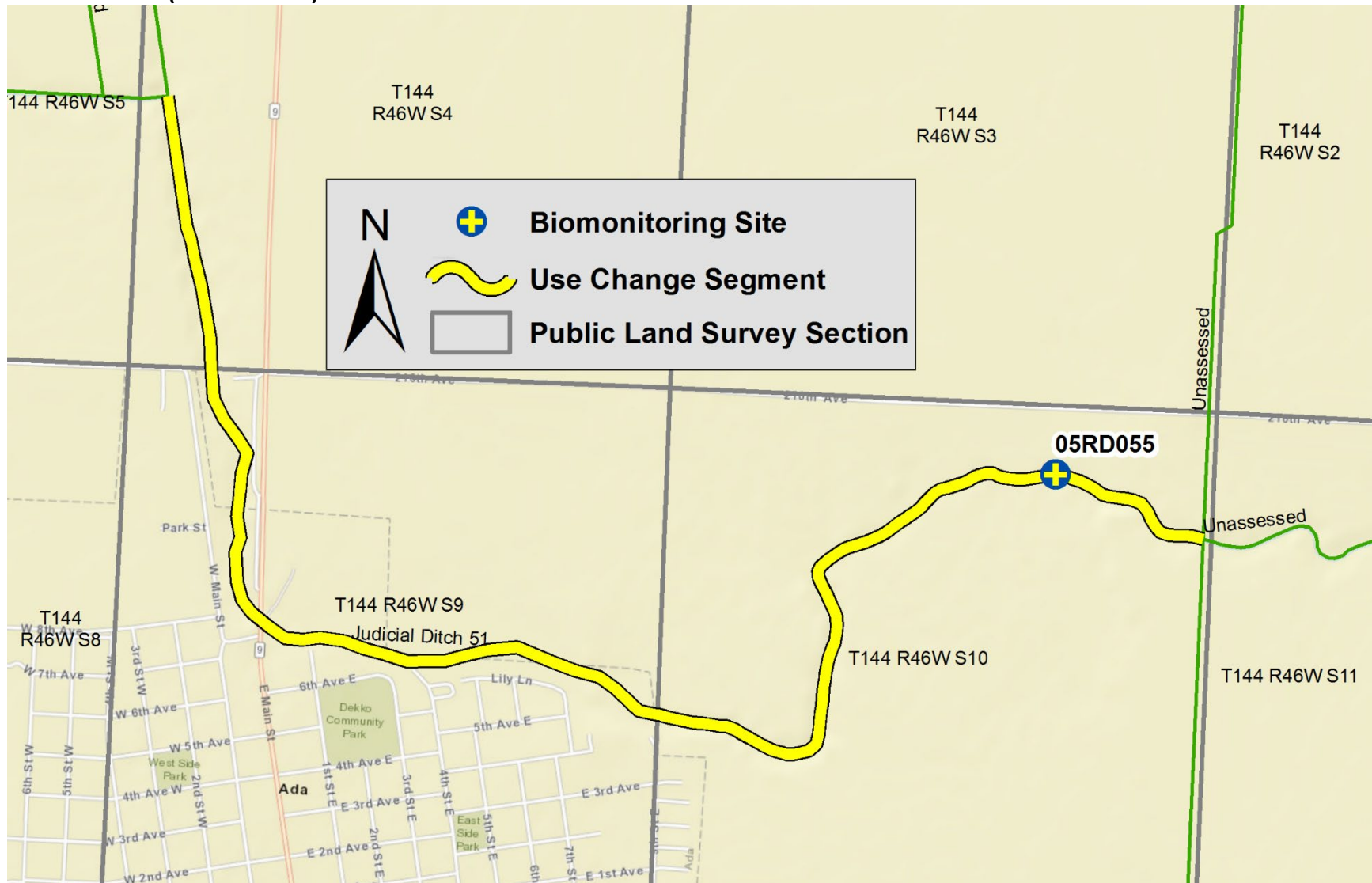


**County Ditch 11 (09020107-517)**

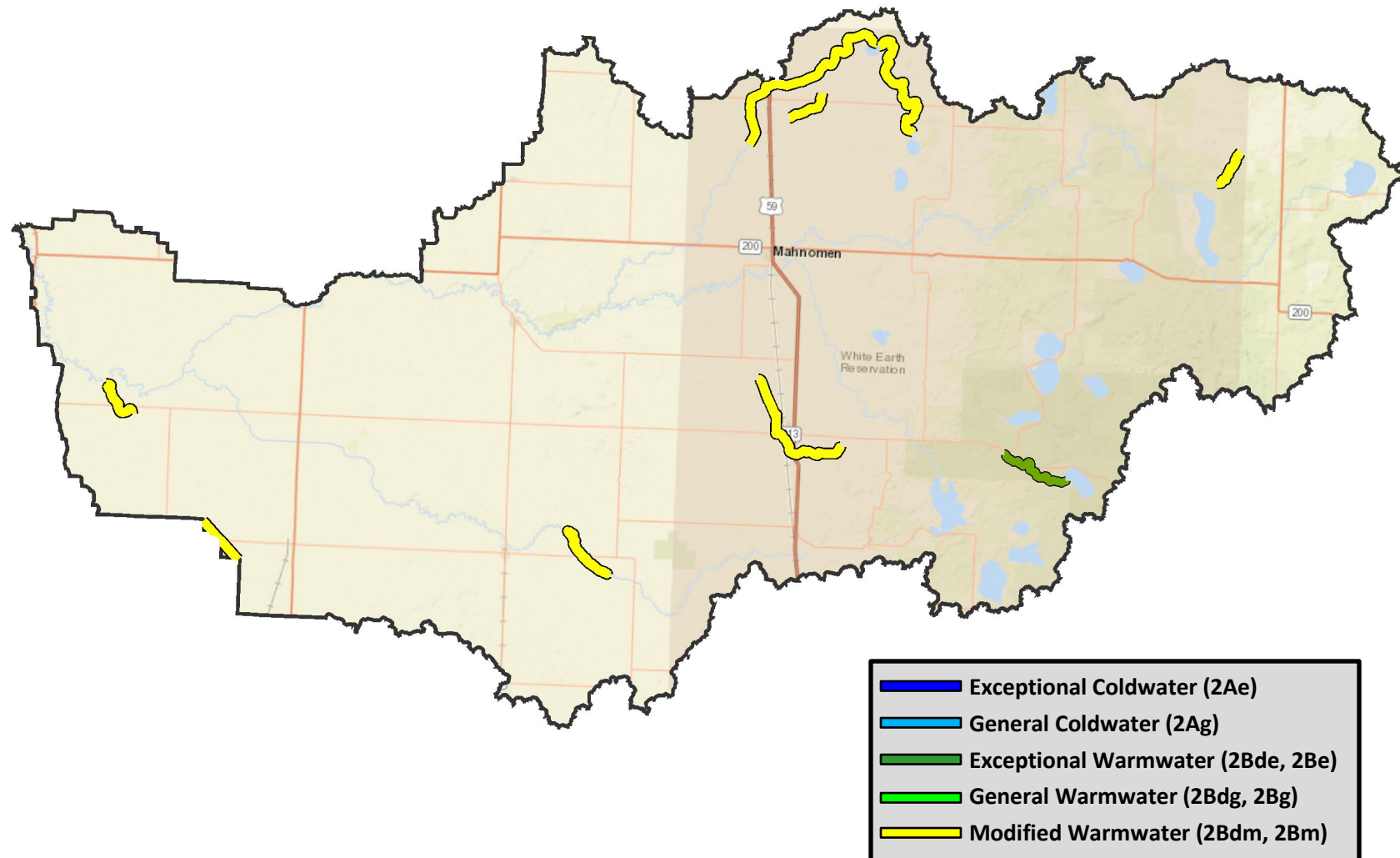




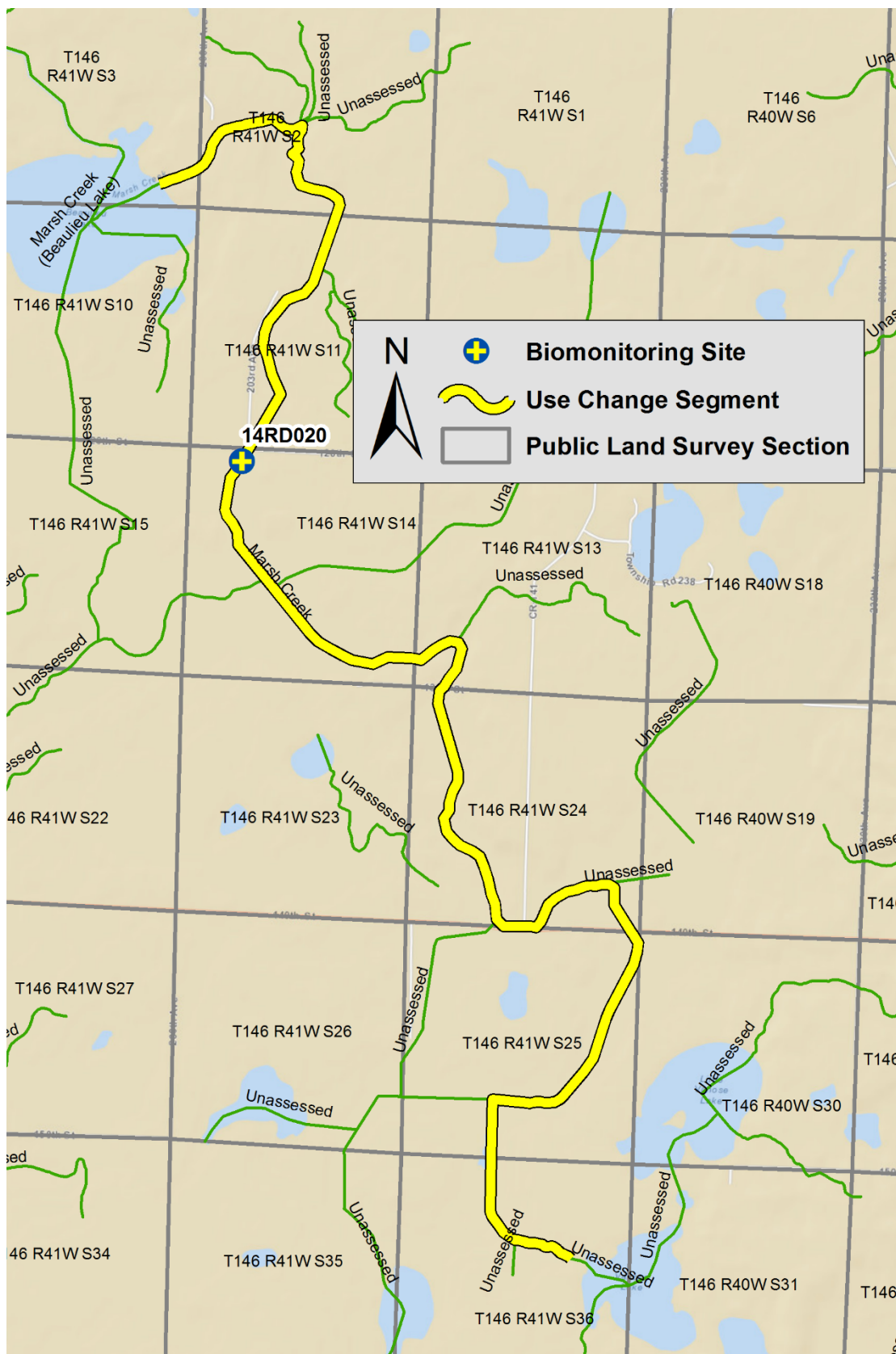
**Judicial Ditch 51 (09020107-518)**



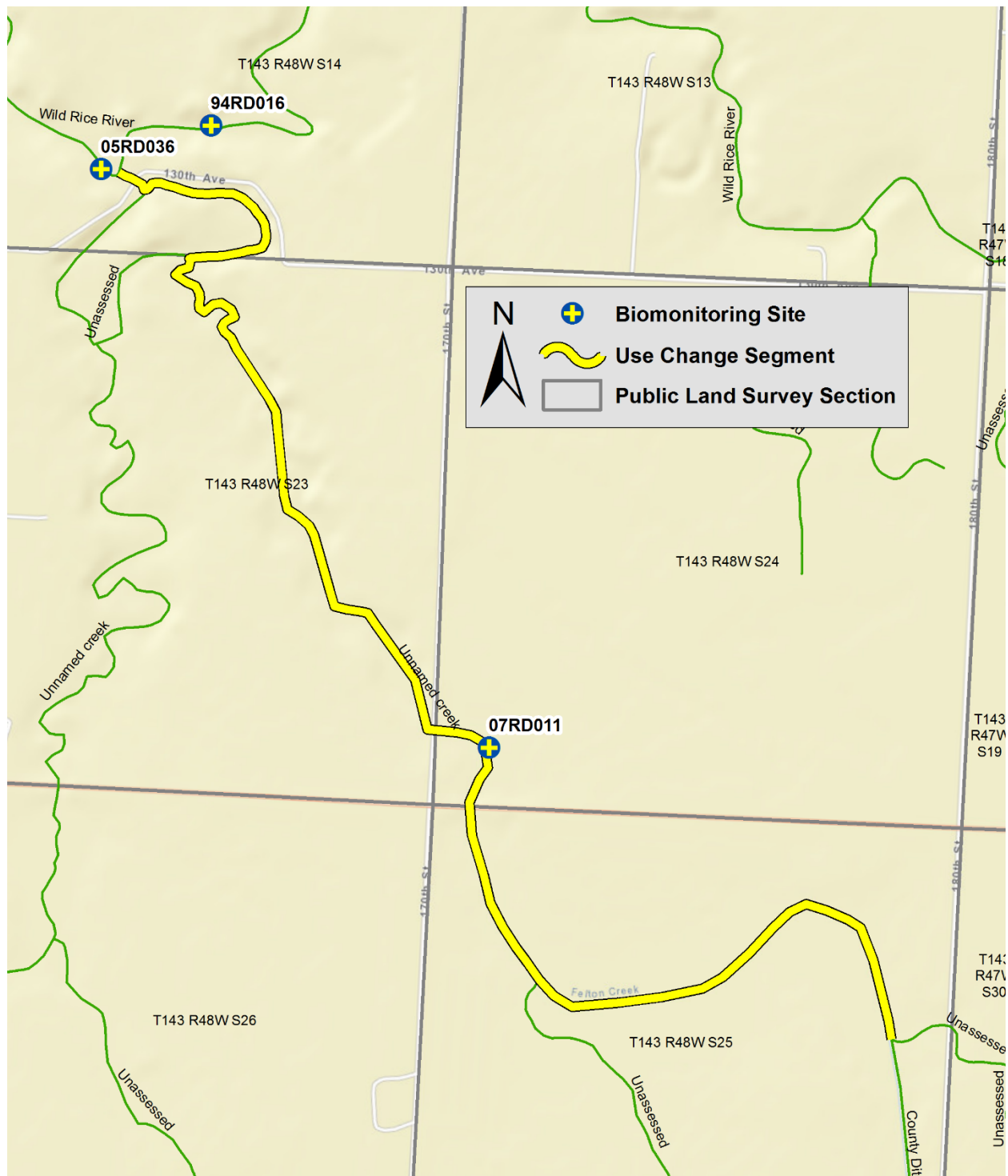
## Wild Rice River (09020108)



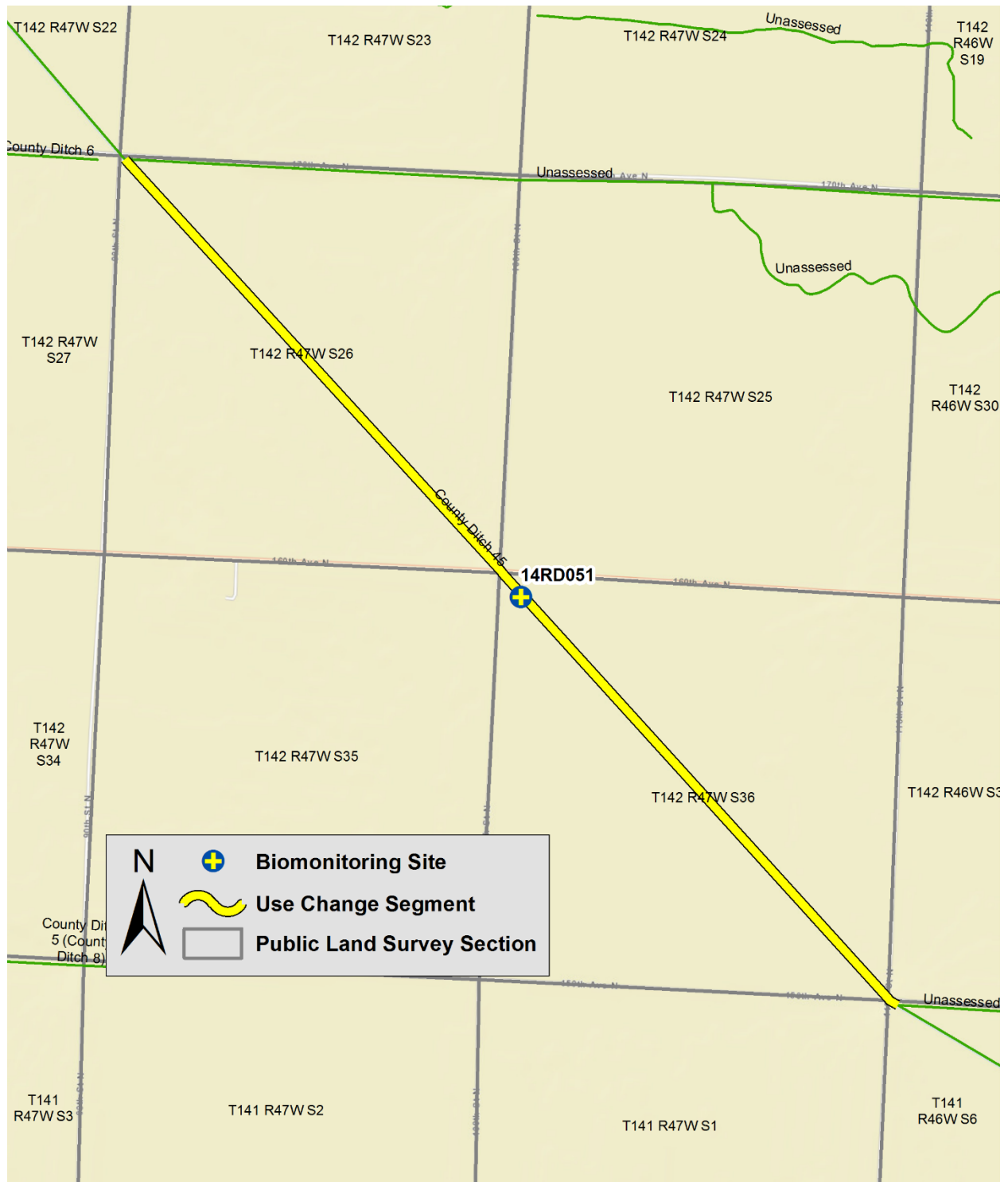
# Marsh Creek (09020108-519)



Unnamed creek (09020108-541)

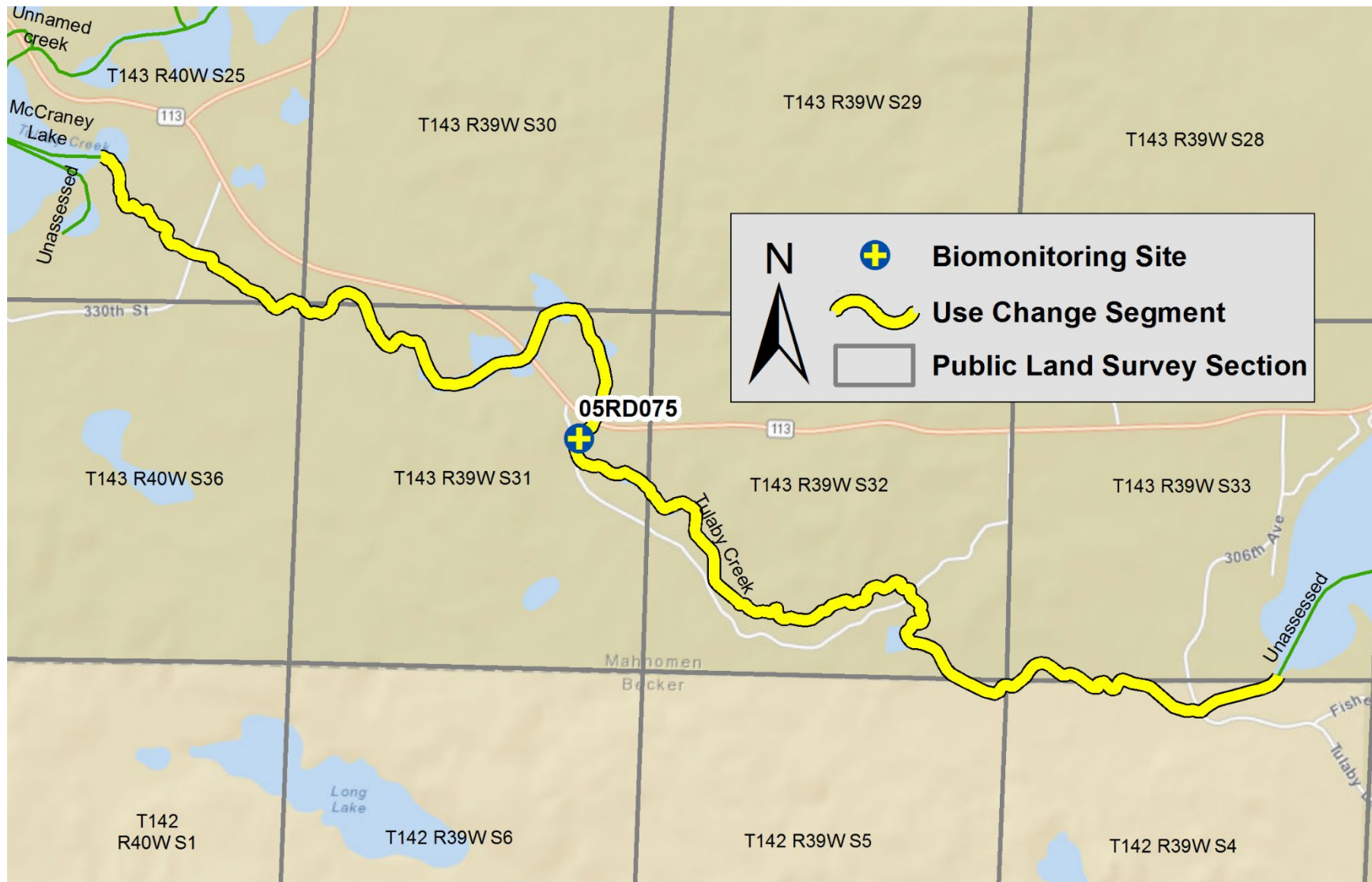


## County Ditch 45 (09020108-553)

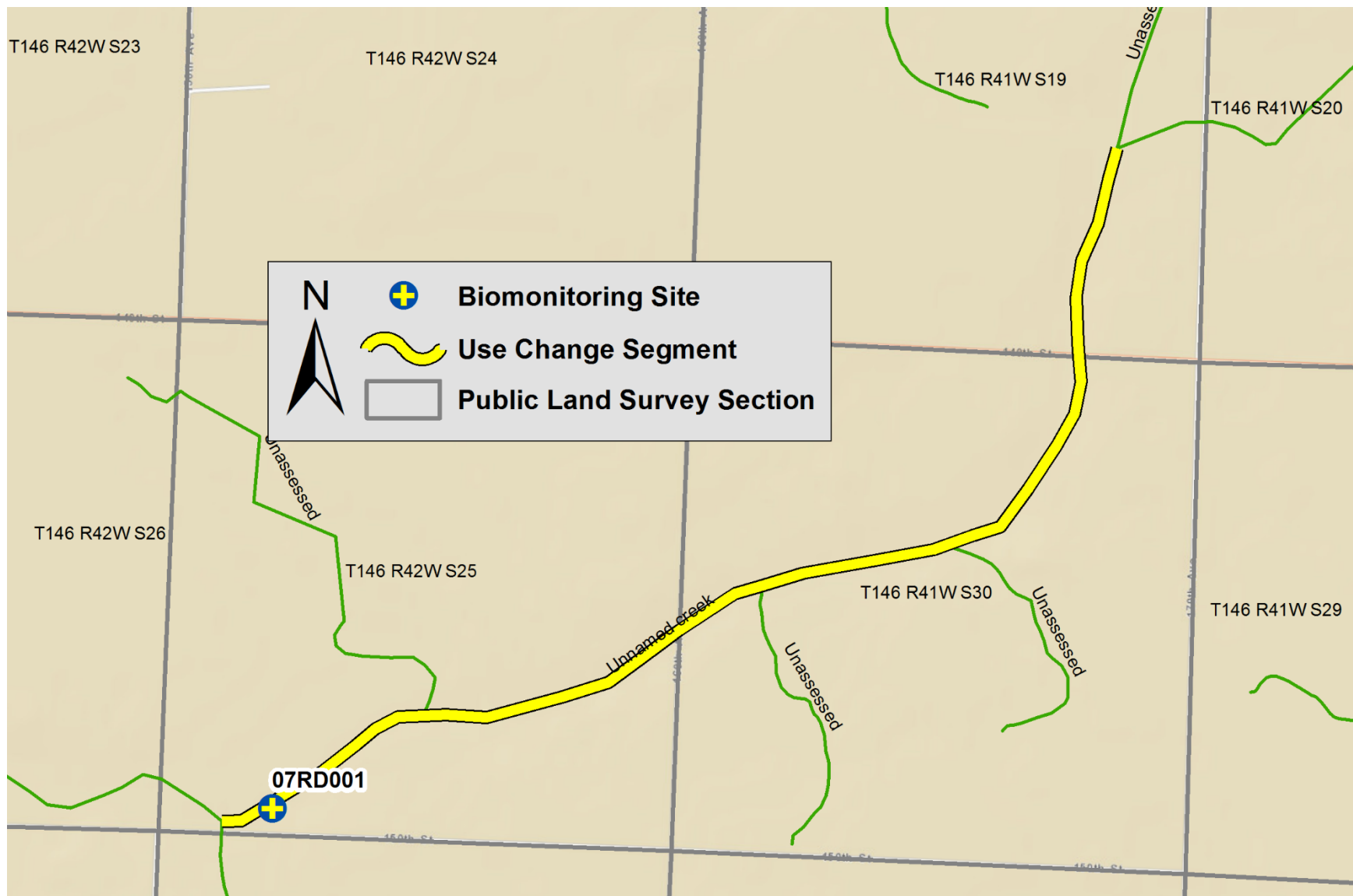




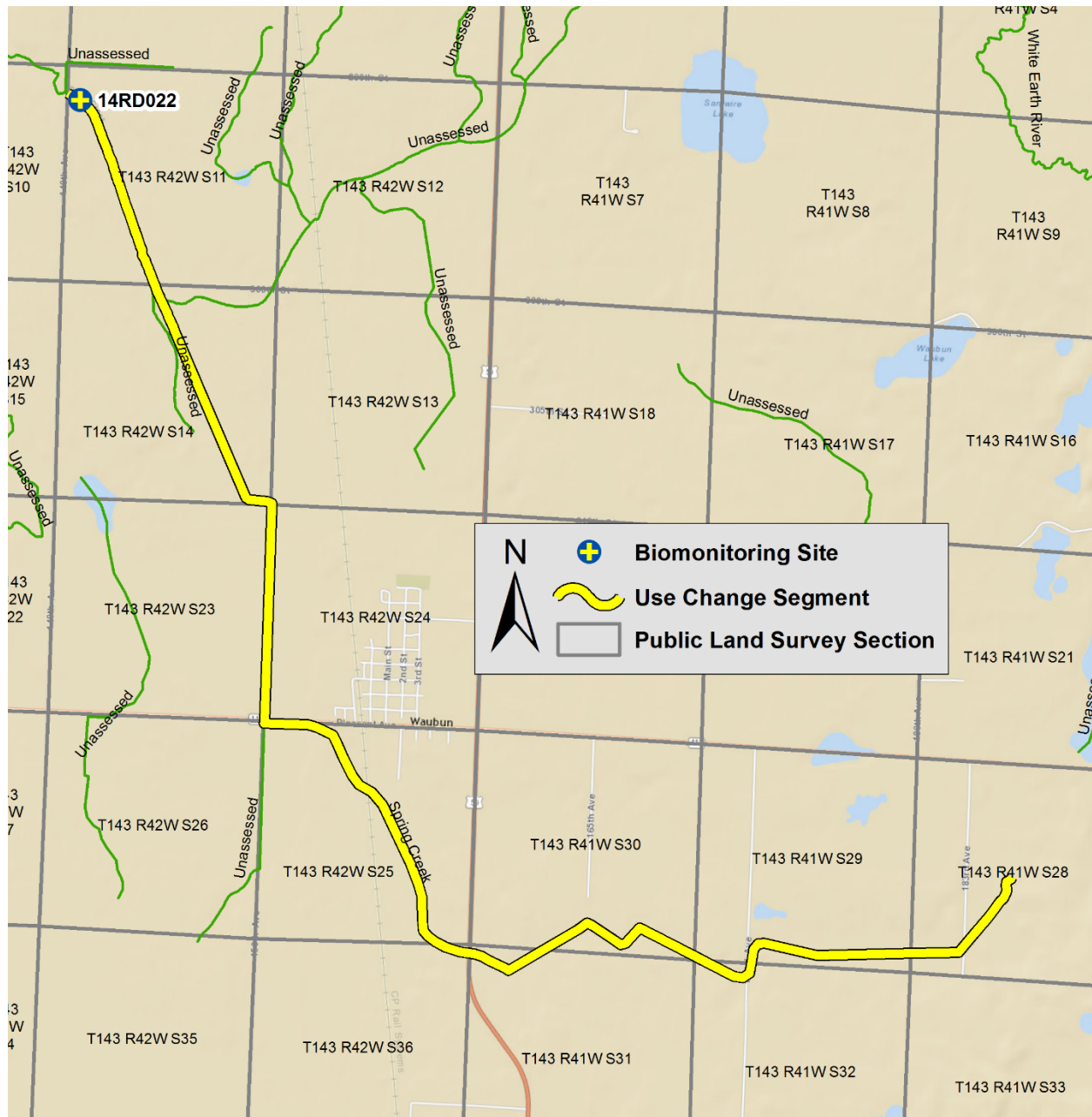
**Tulaby Creek (09020108-565)**



Unnamed creek (09020108-598)

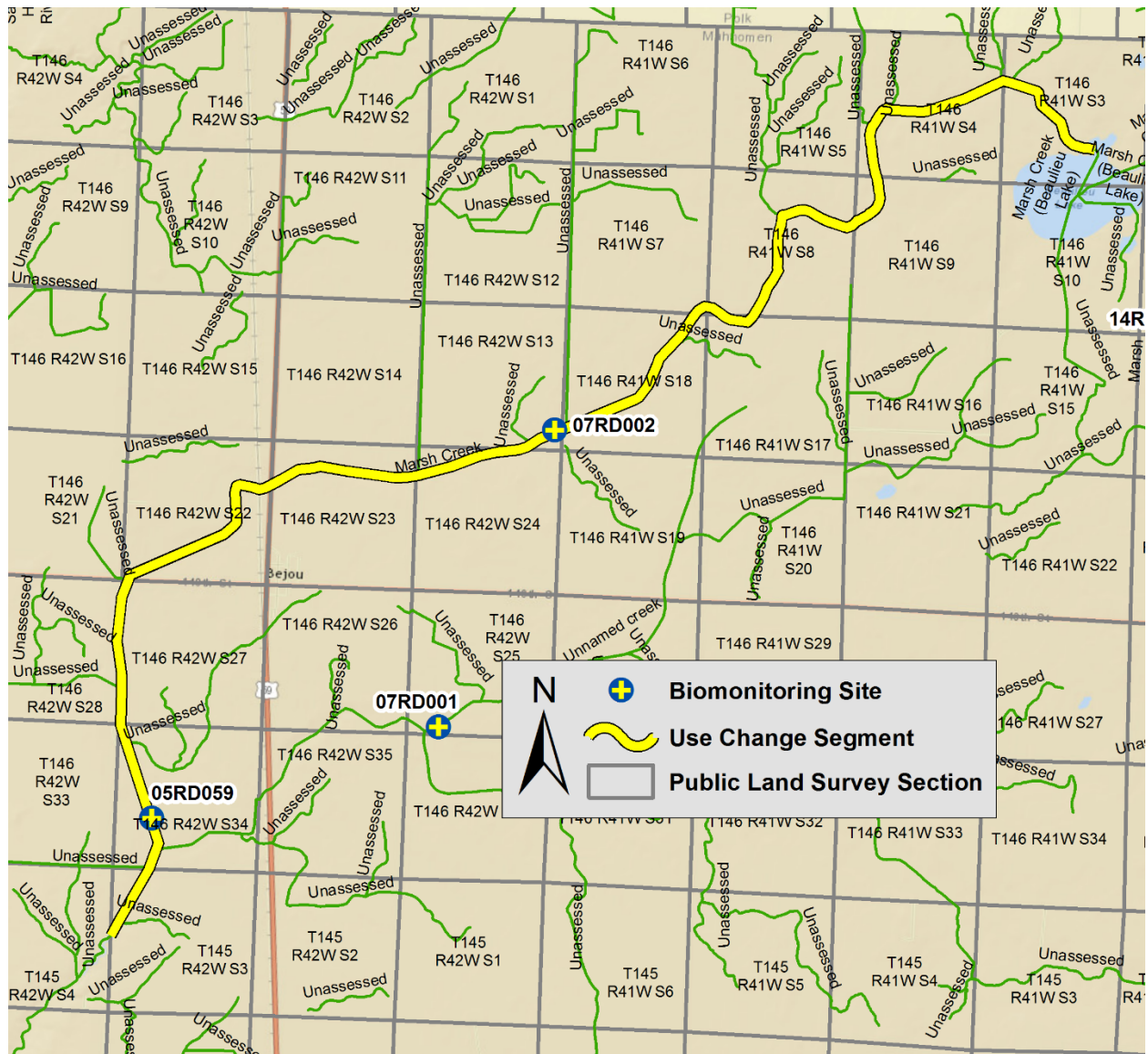


## Spring Creek (09020108-647)

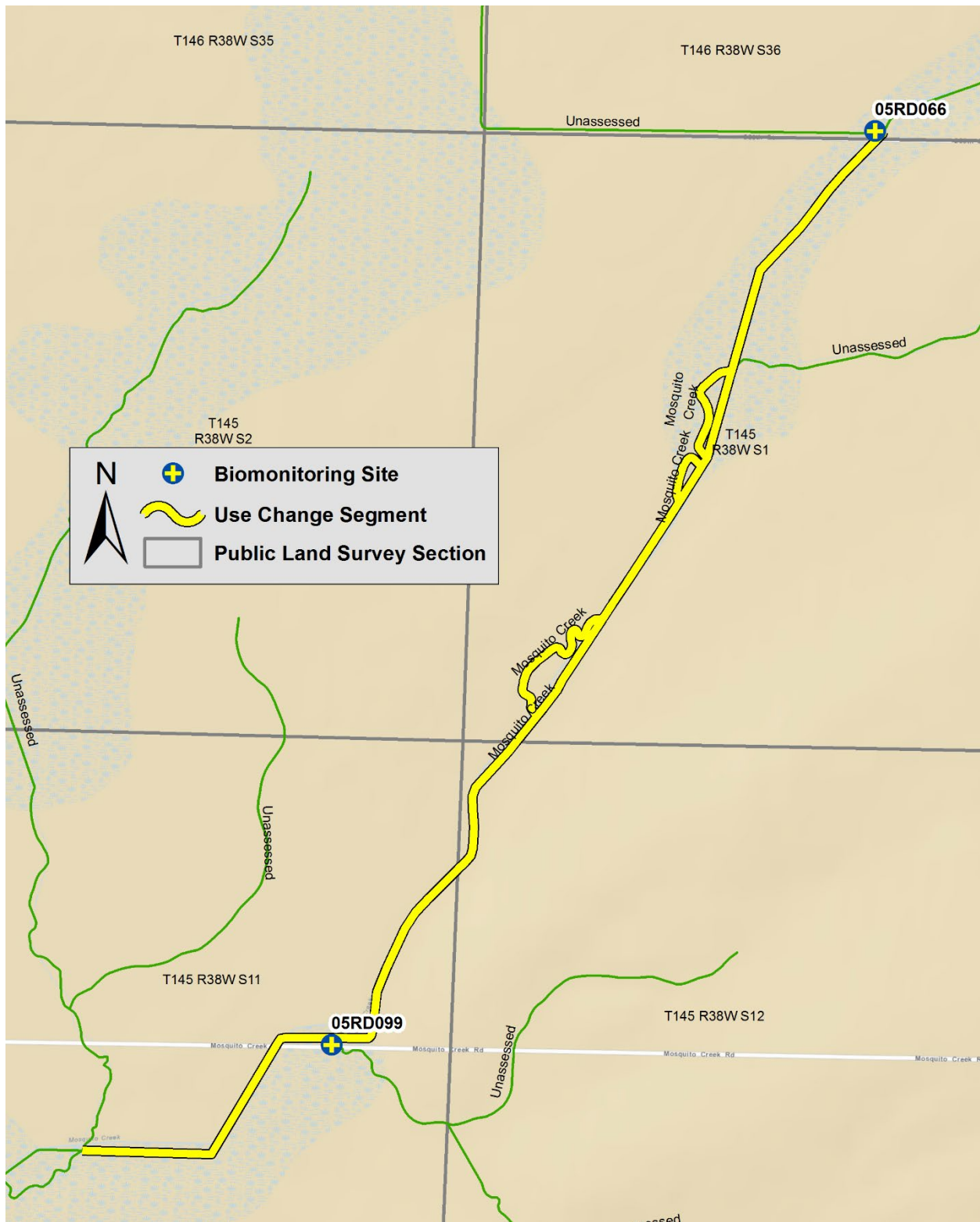




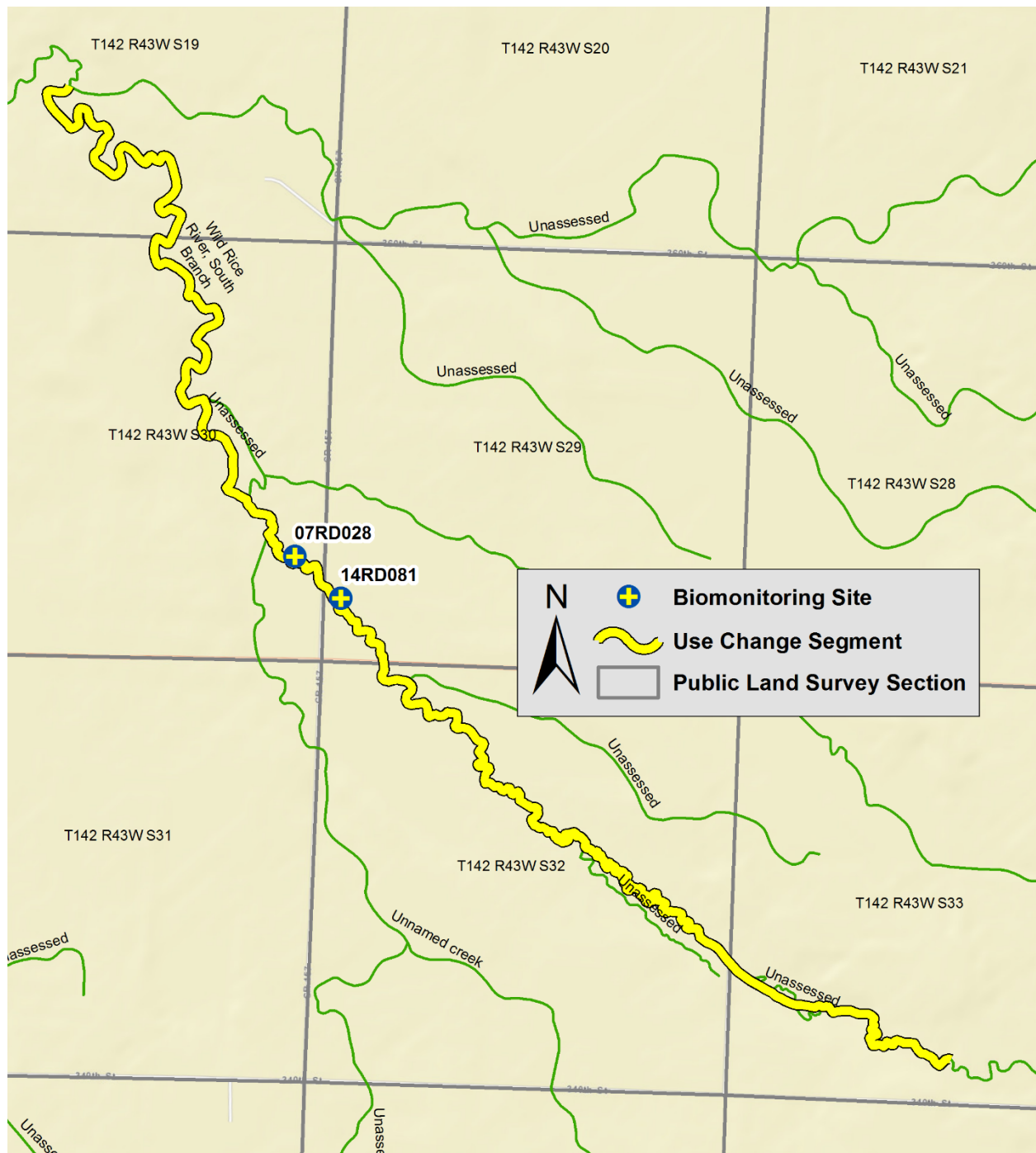
## Marsh Creek (09020108-651)



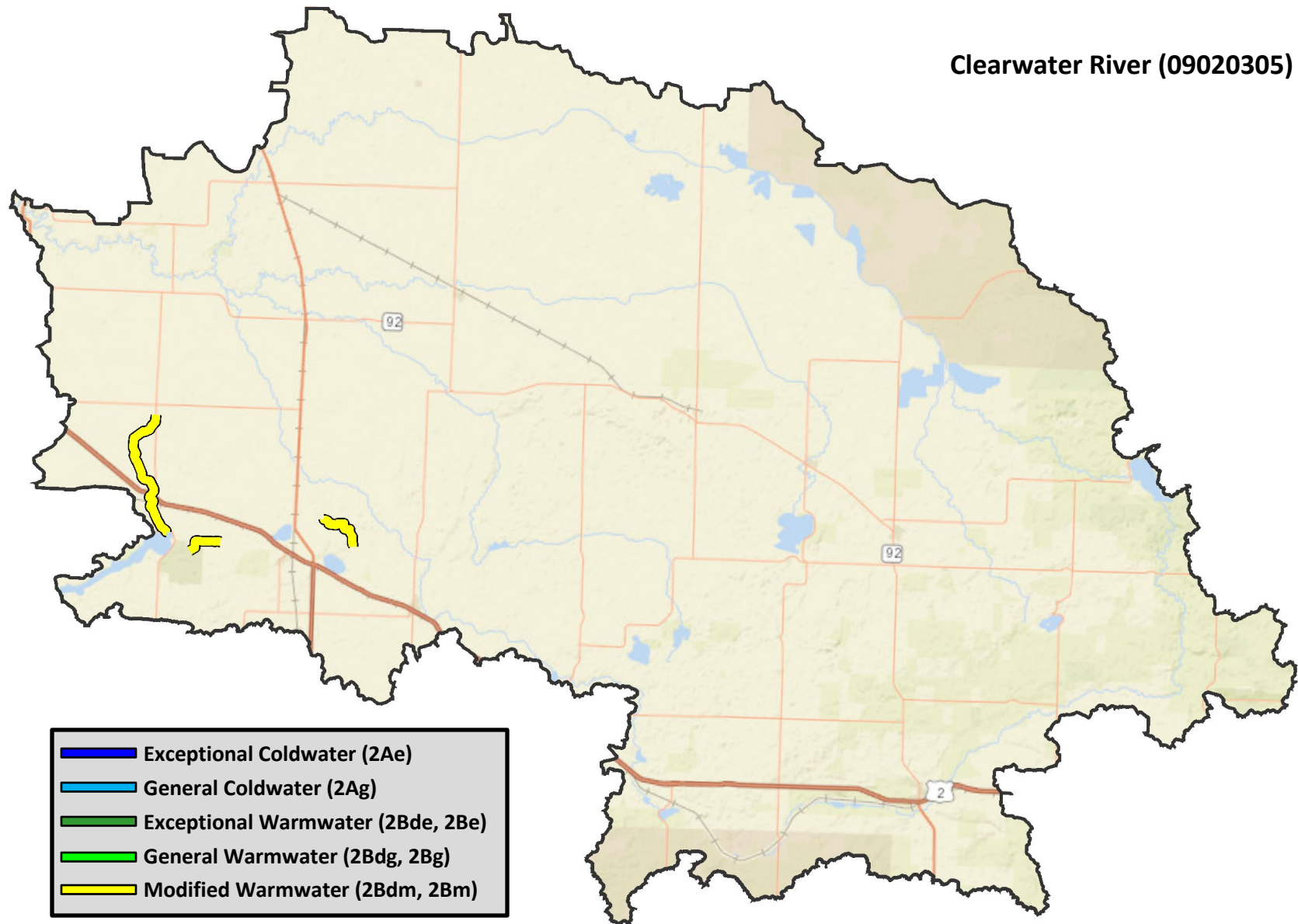
# Mosquito Creek (09020108-657)



# Wild Rice River, South Branch (09020108-661)

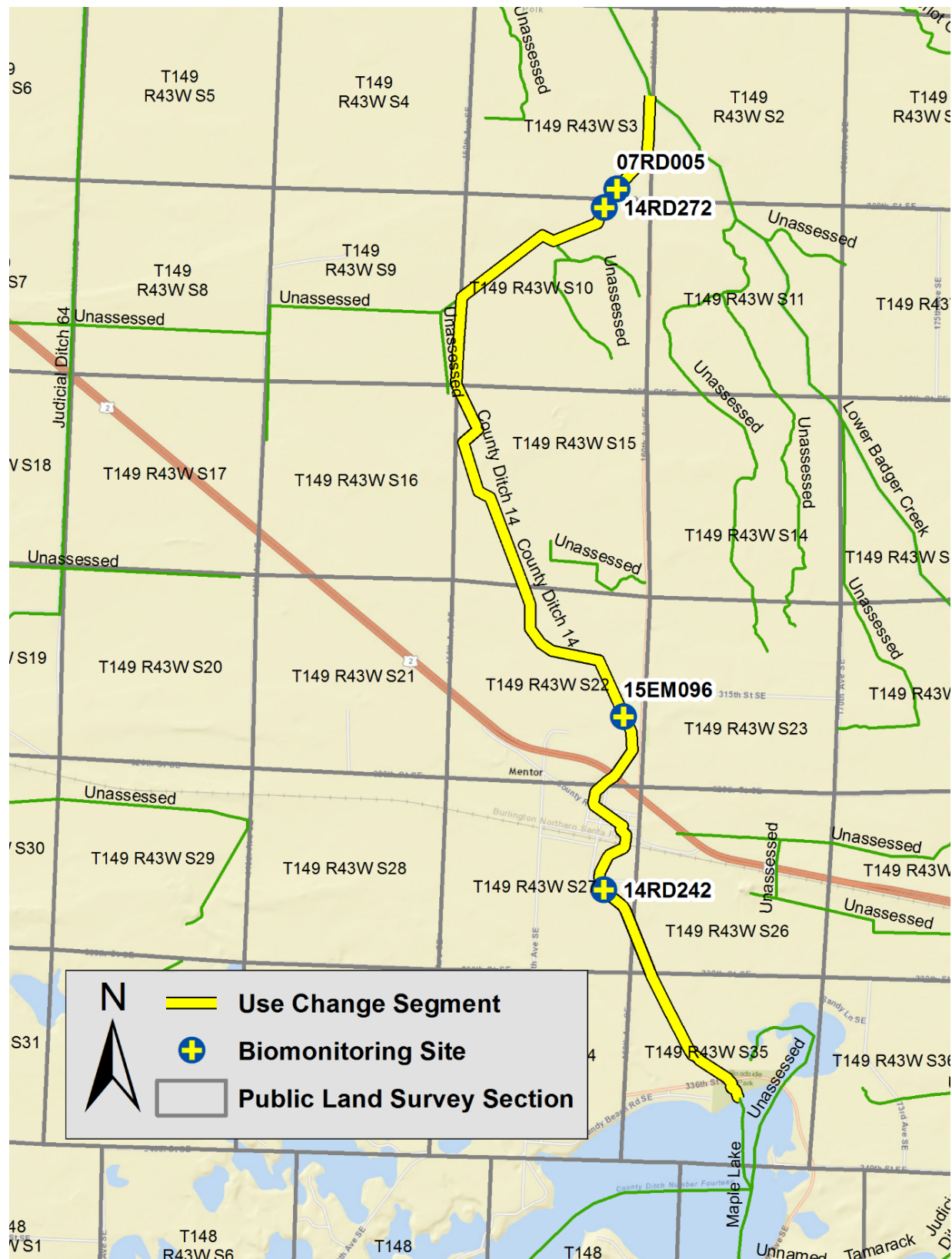


## Clearwater River (09020305)

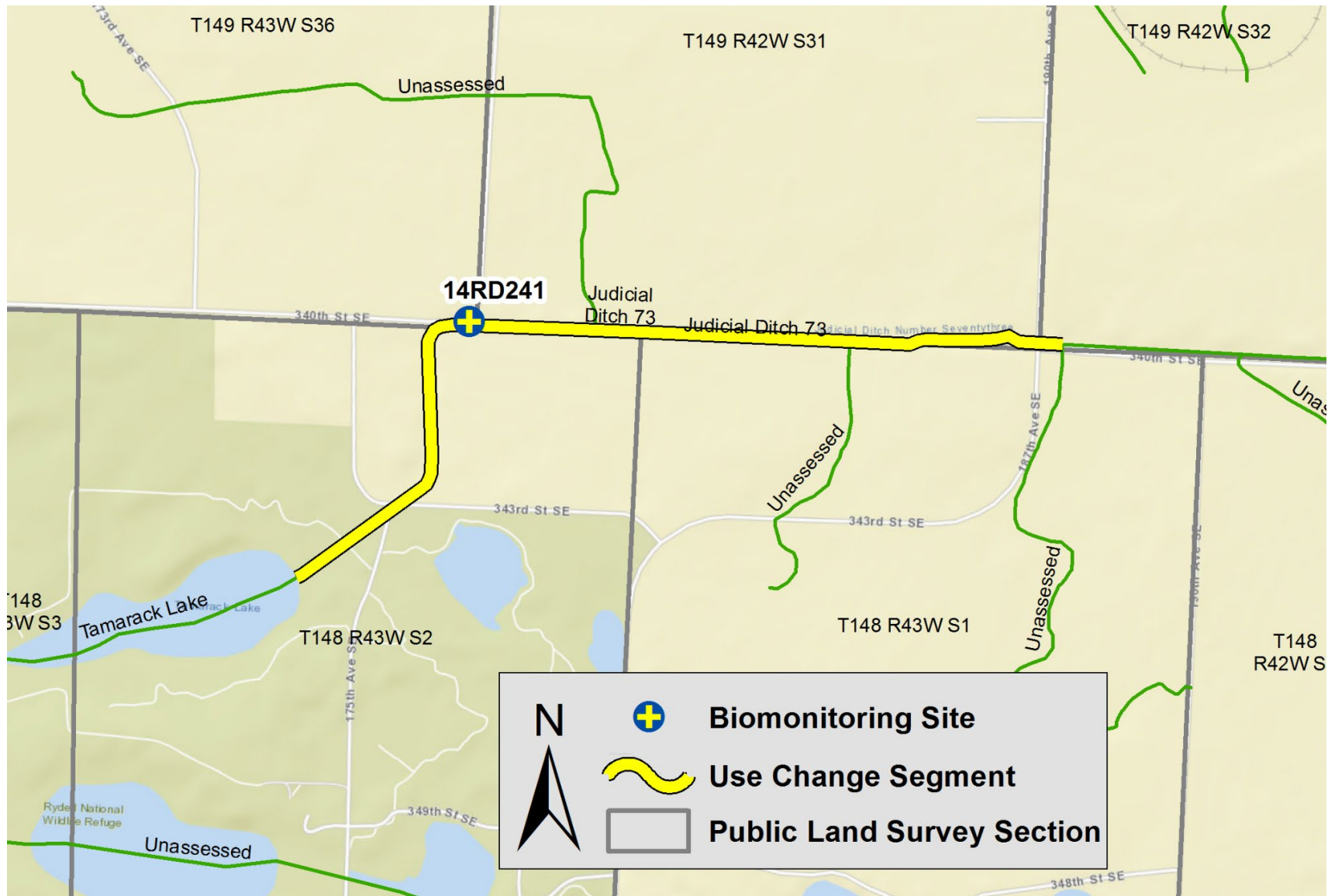




# County Ditch 14 (09020305-523)



**Judicial Ditch 73 (09020305-550)**



# Unnamed Creek (09020305-561)

