

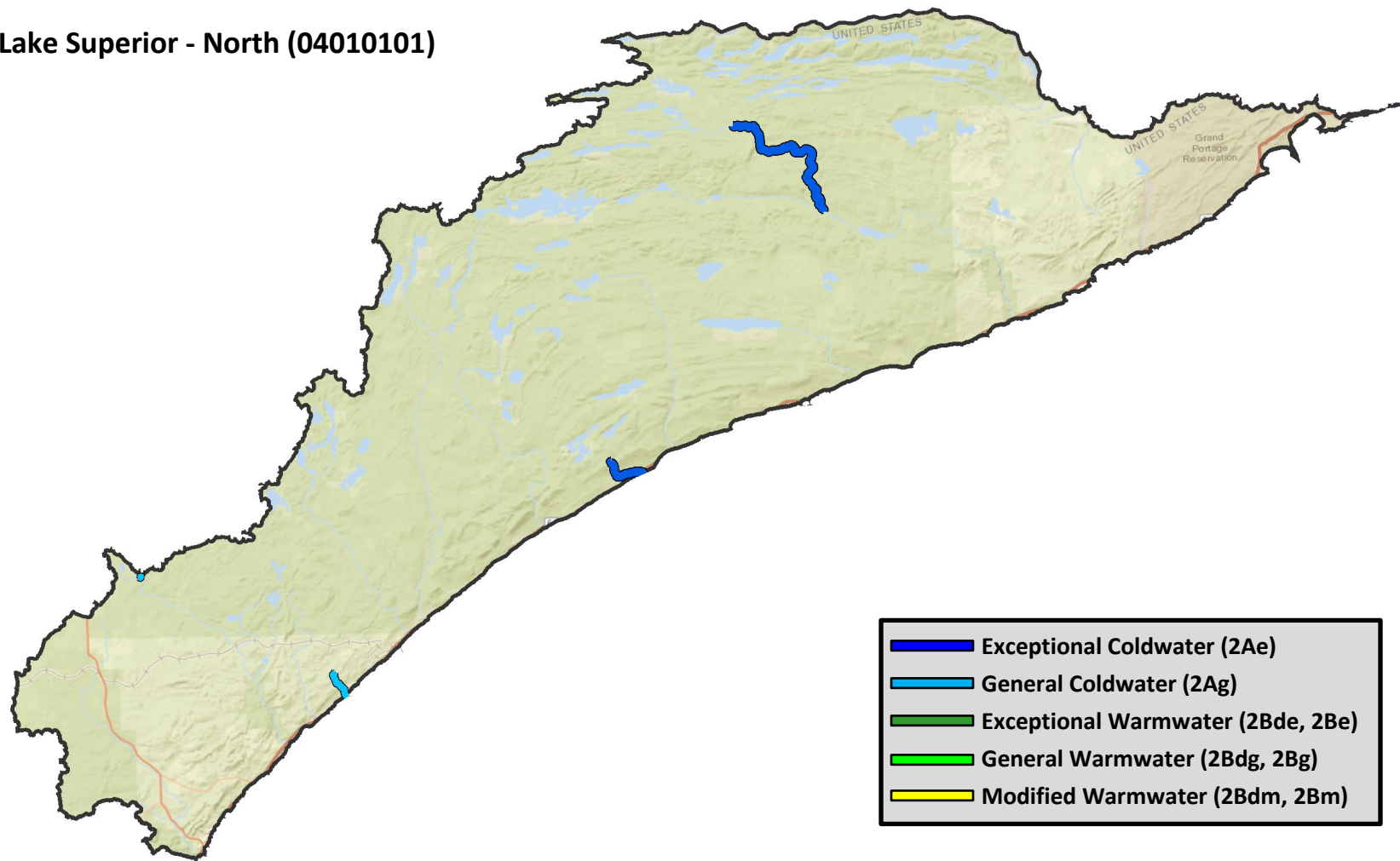
Appendix A: Maps of designated use changes - Lake Superior Basin

Watersheds

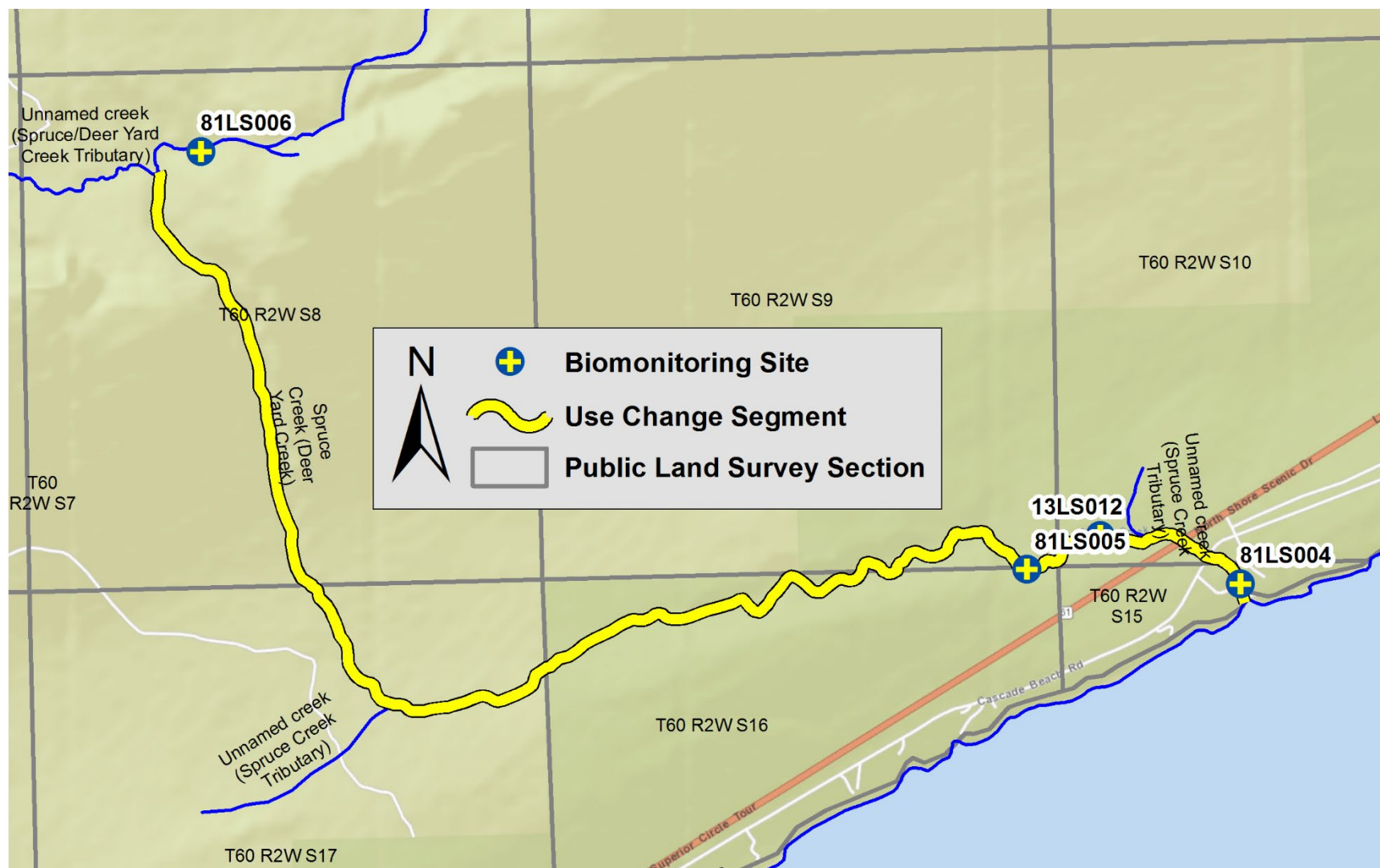
1. Lake Superior - North (04010101)
2. Lake Superior – South (04010102)
3. St. Louis River (04010201)
4. Cloquet River (04010202)
5. Nemadji River (04010301)

wq-rule4-21a1

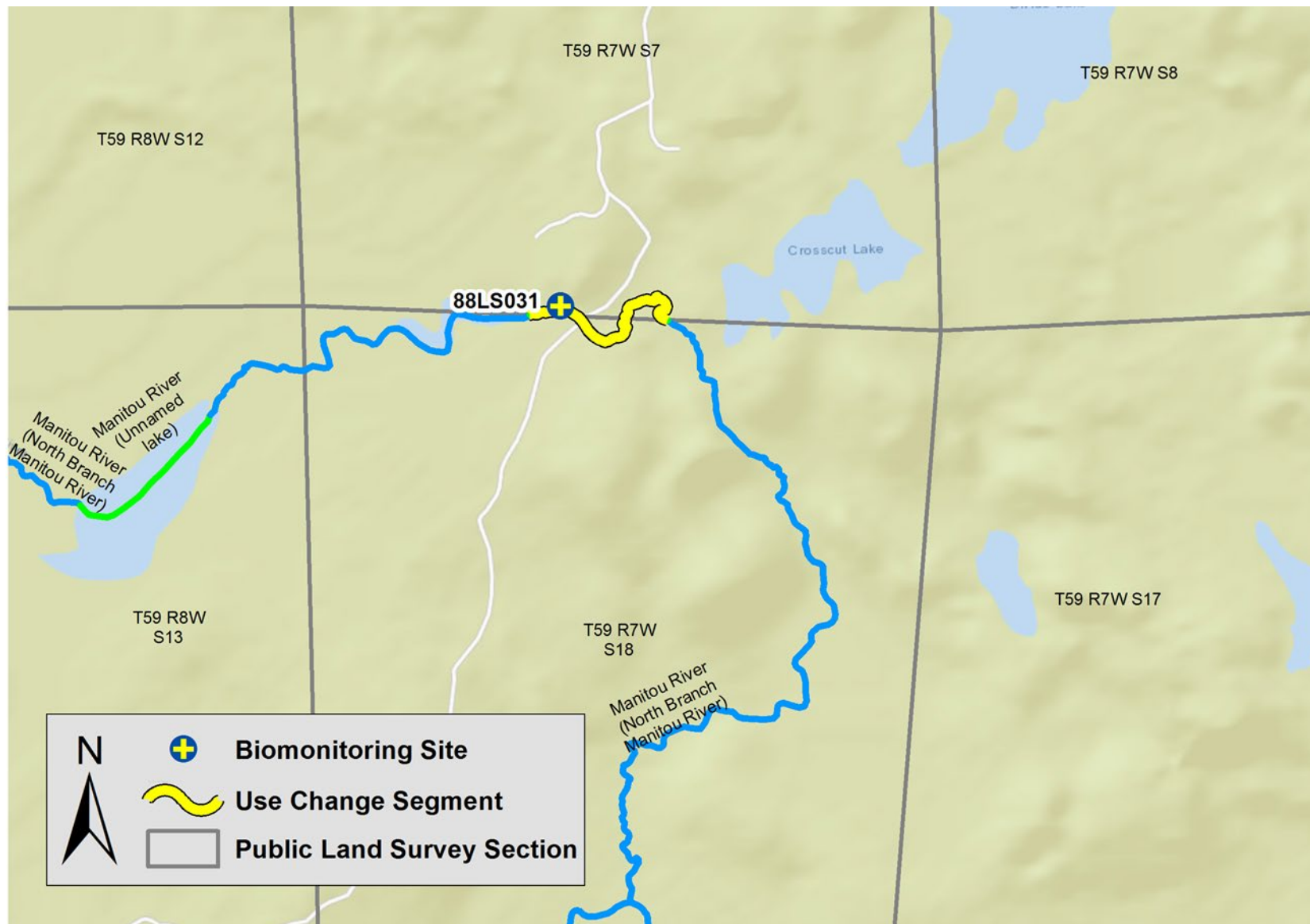
Lake Superior - North (04010101)



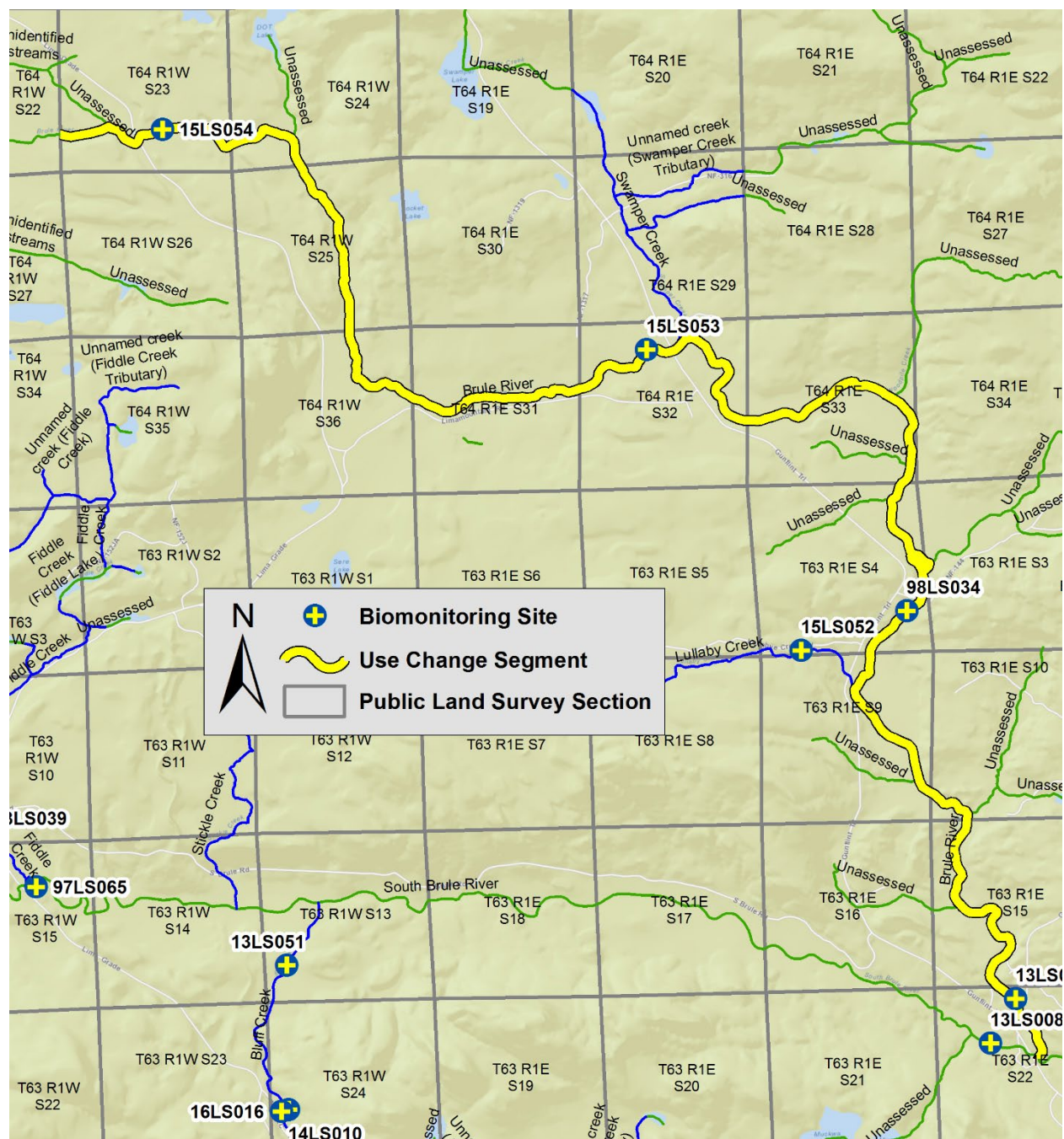
Spruce Creek (Deer Yard Creek) (04010101-615)



Manitou River (North Branch Manitou River) (04010101-D23)



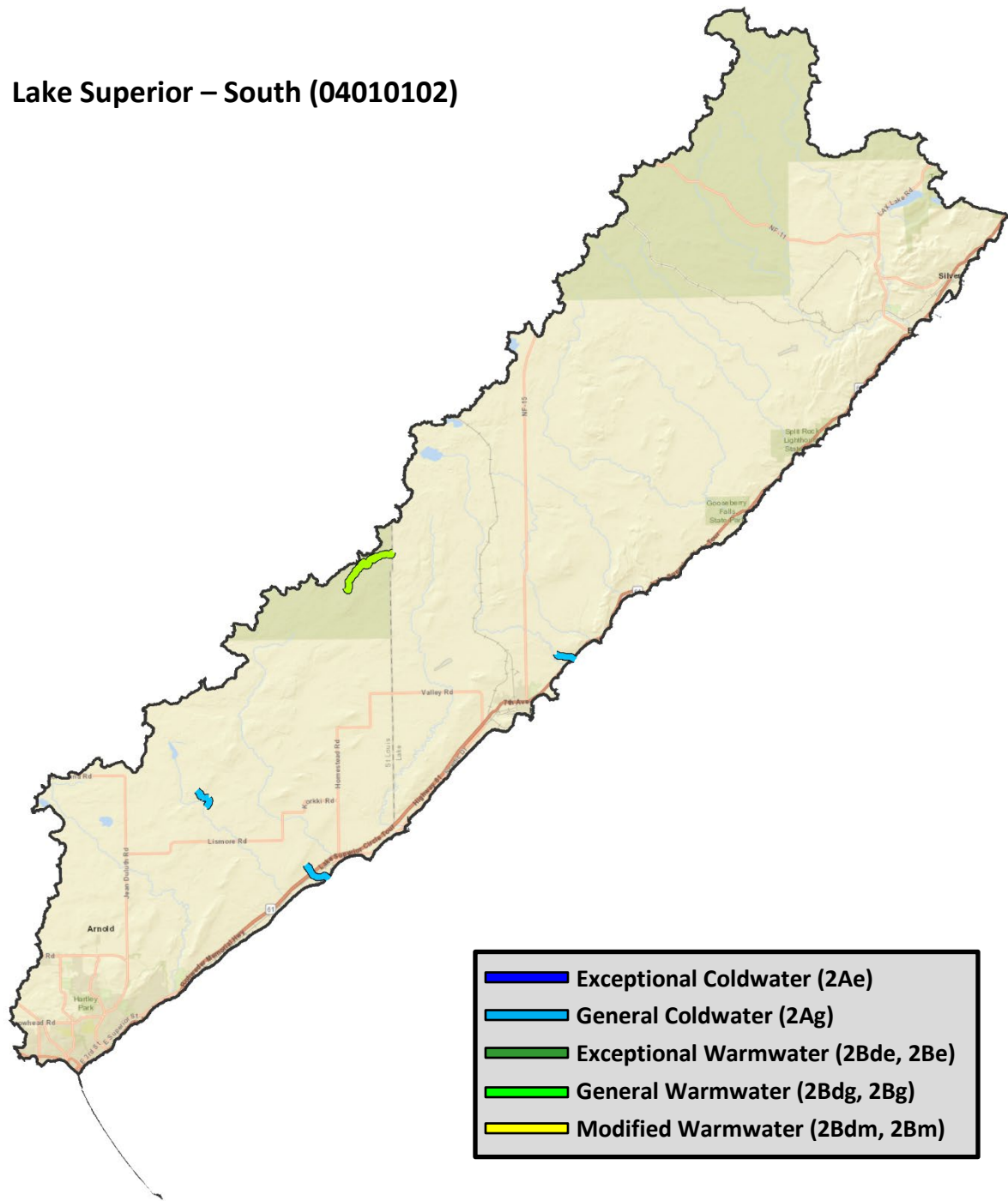
Brule River (04010101-D30)



Sugarloaf Creek (04010101-D87)



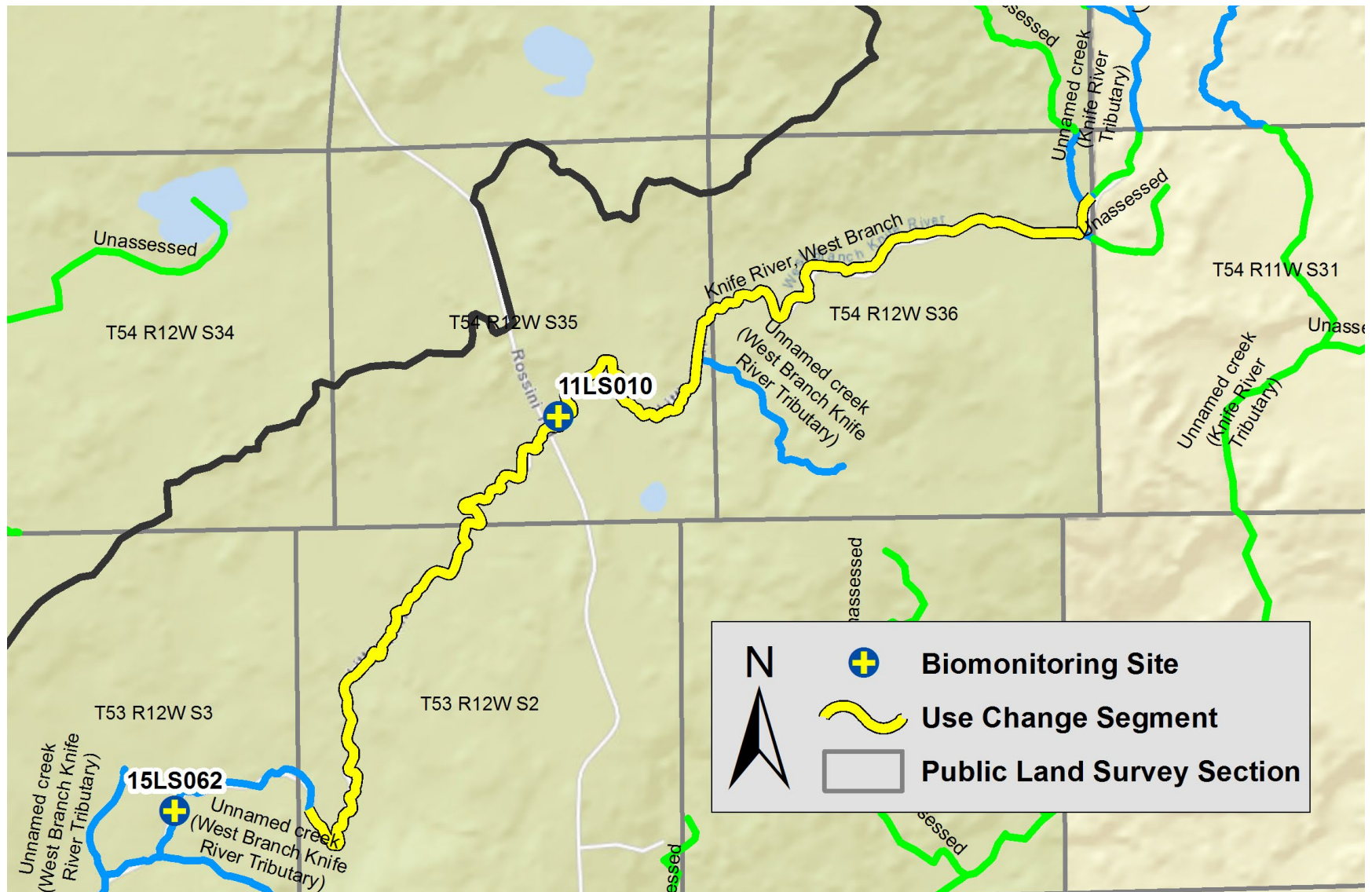
Lake Superior – South (04010102)



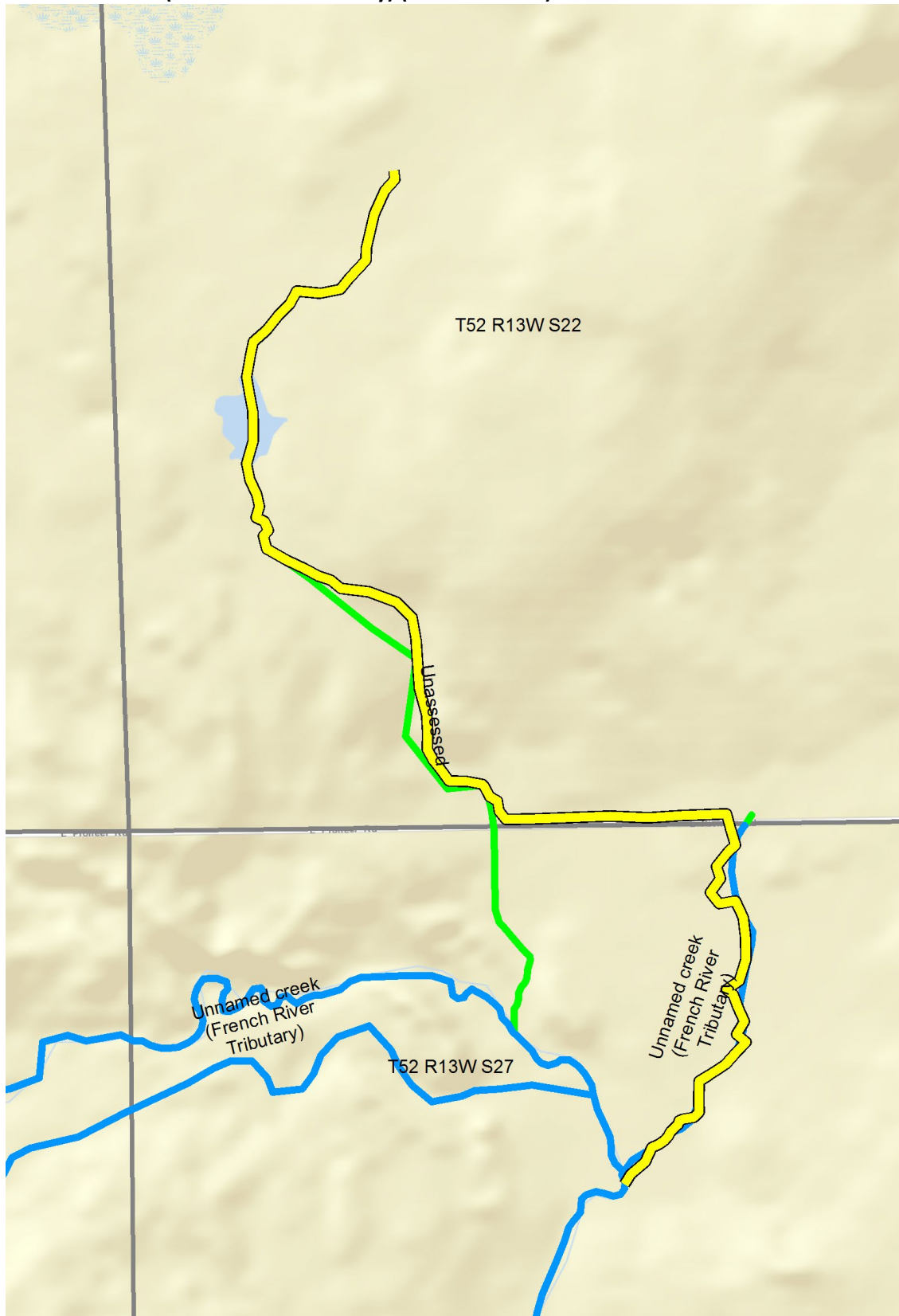
Pete's Creek (04010102-518)



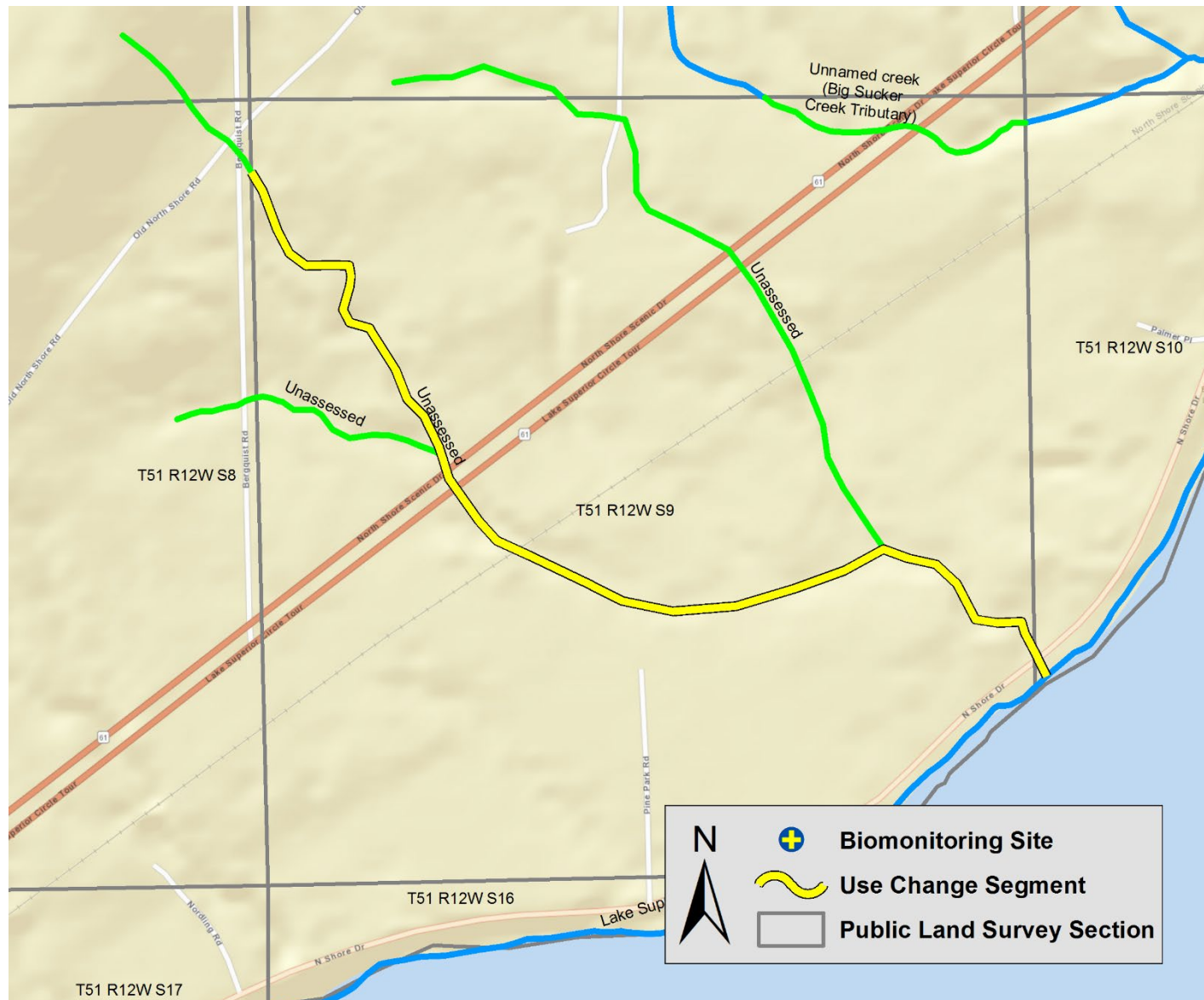
Knife River, West Branch (04010102-C16)



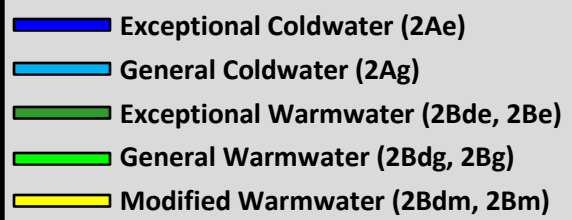
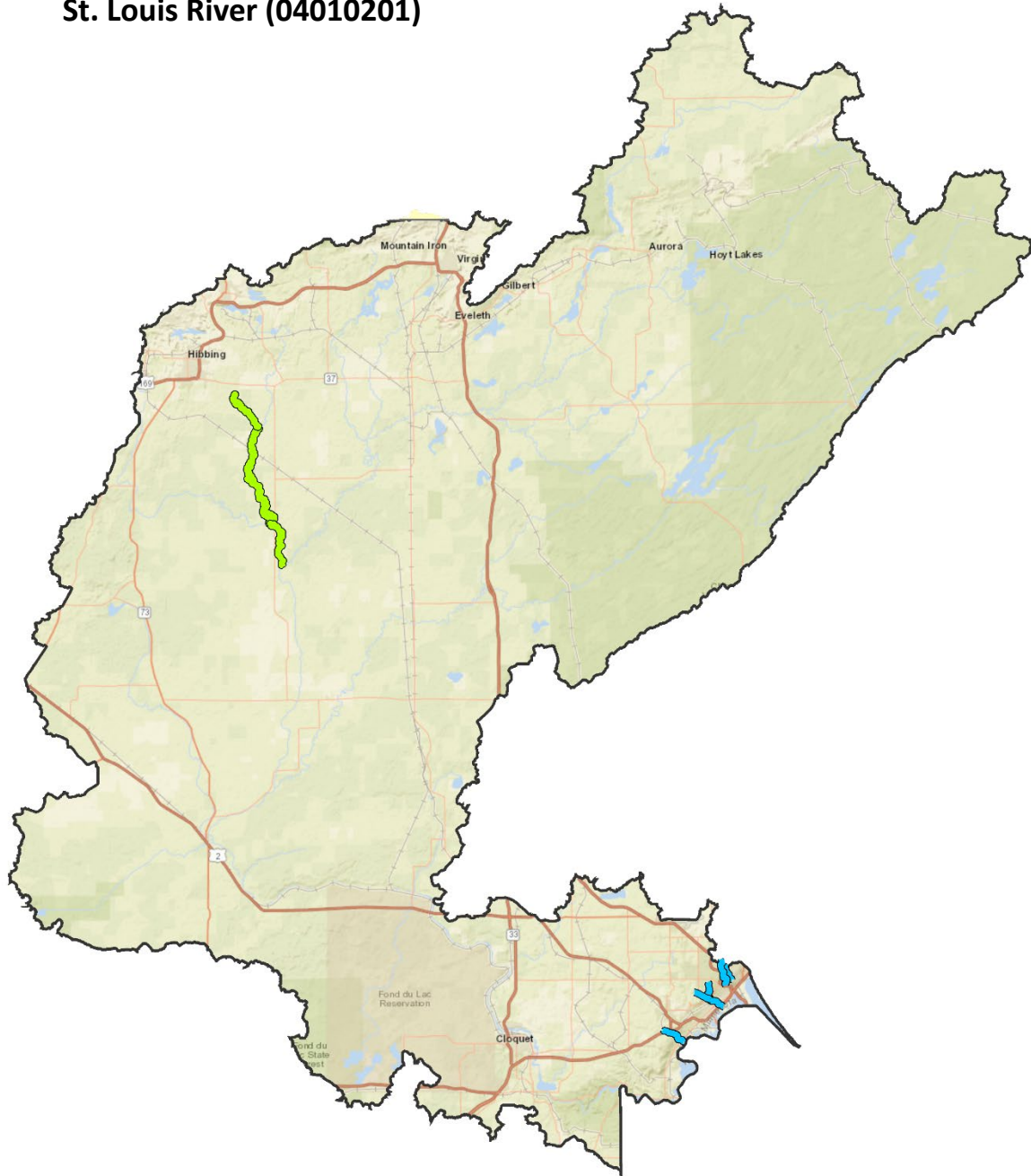
Unnamed creek (French River Tributary) (04010102-C39)



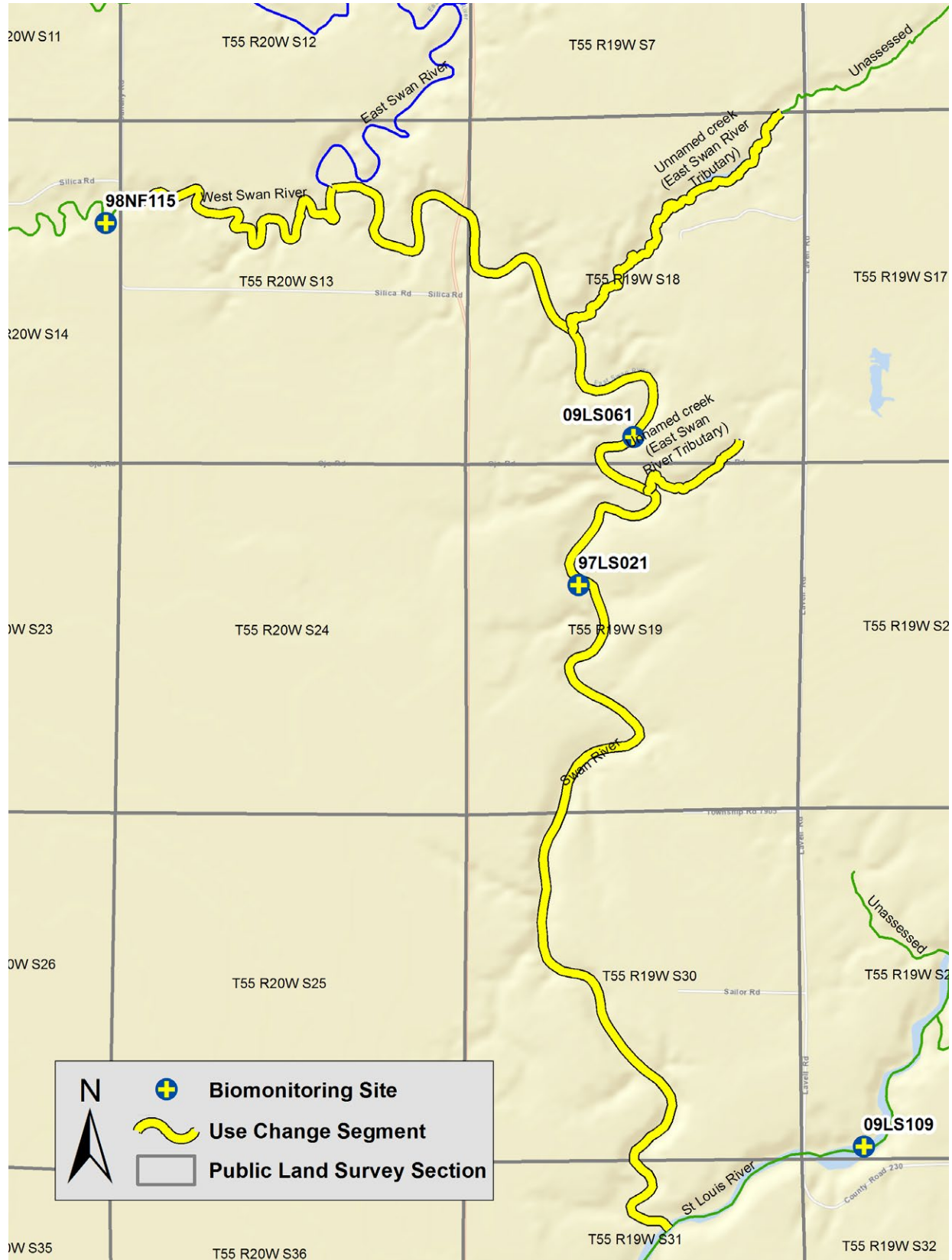
Unnamed creek (Palmer Creek) (04010102-C40)



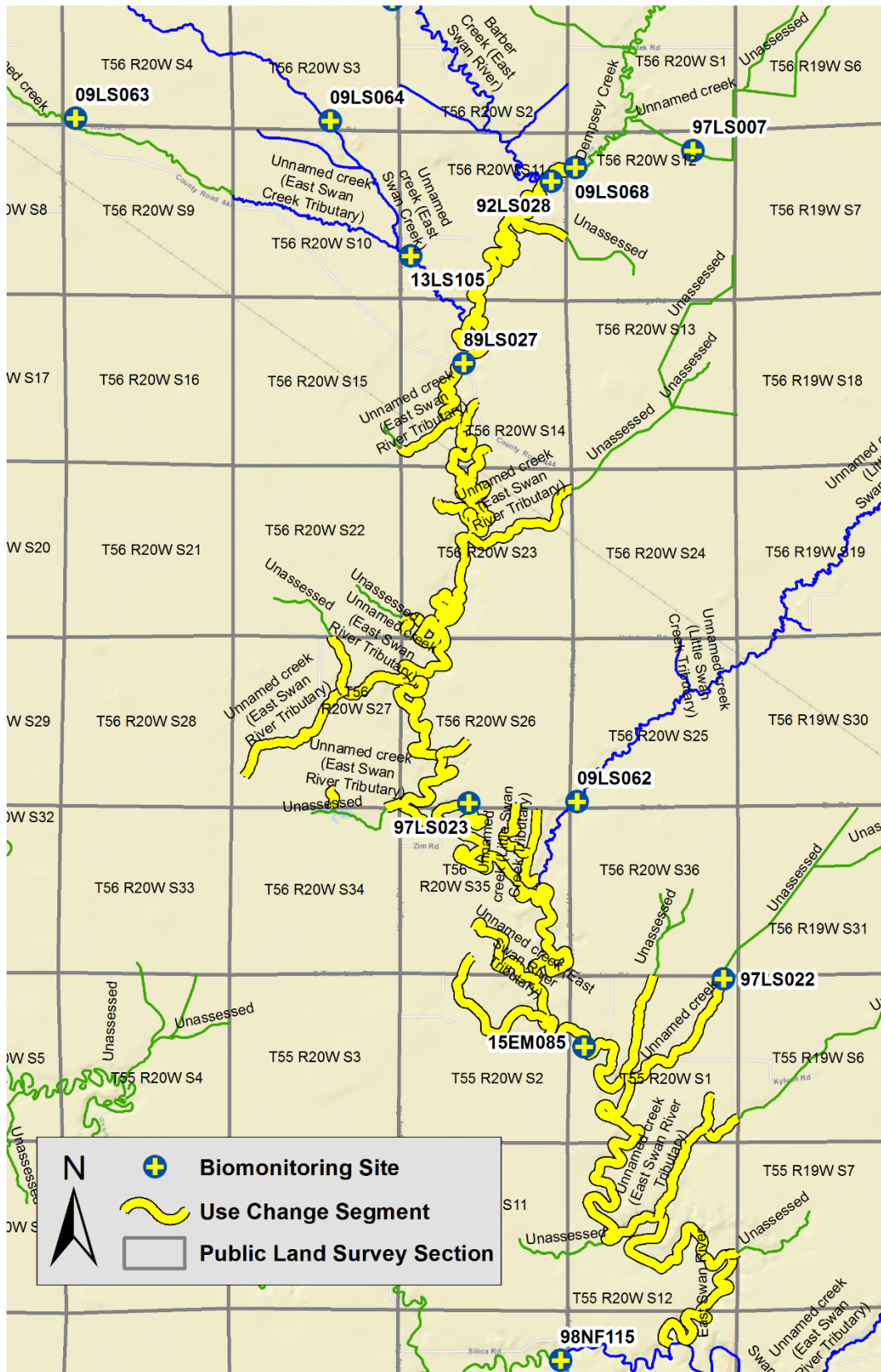
St. Louis River (04010201)



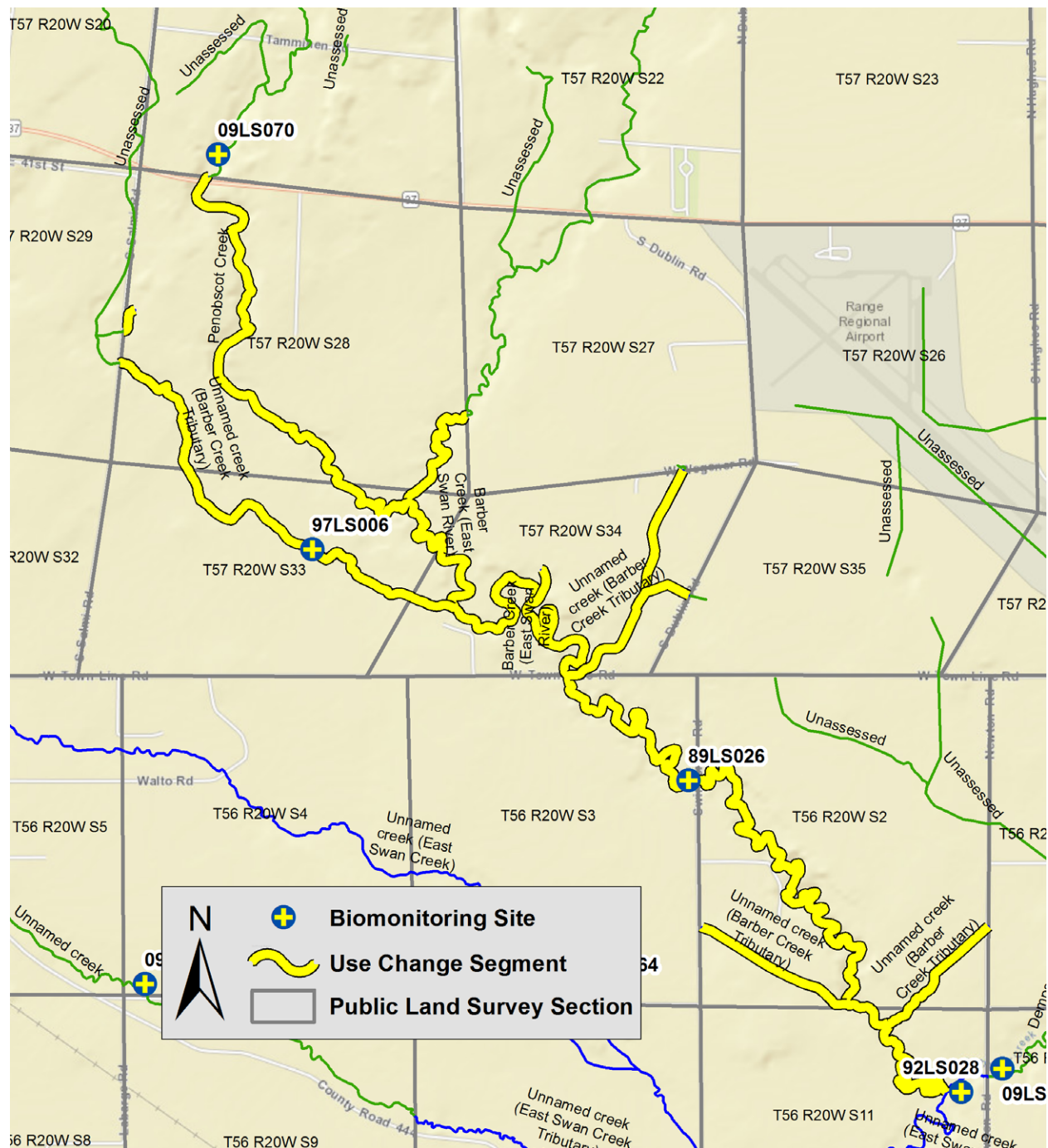
Swan River (04010201-557)



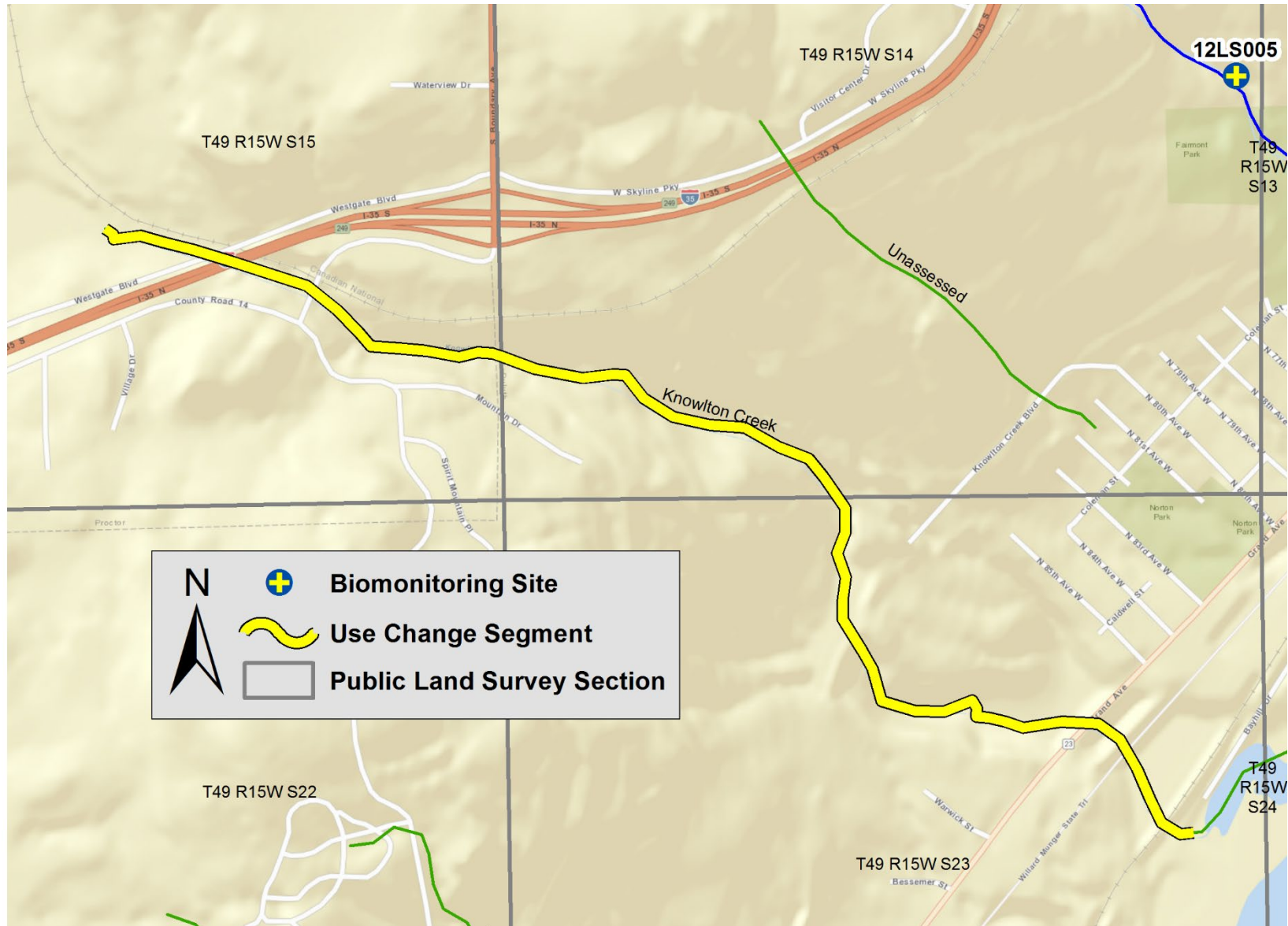
East Swan River (04010201-558)



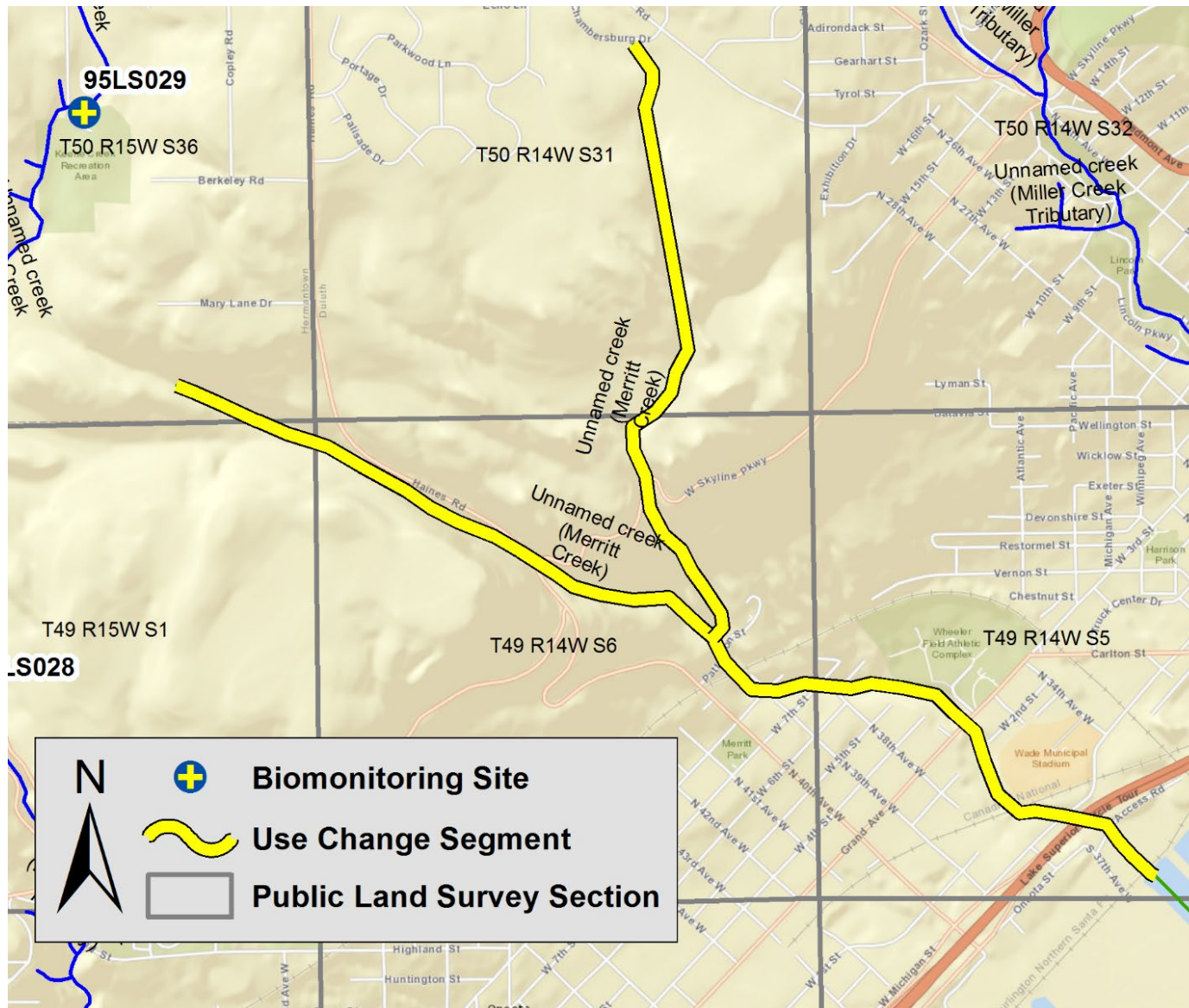
Barber Creek (East Swan River) (04010201-569)



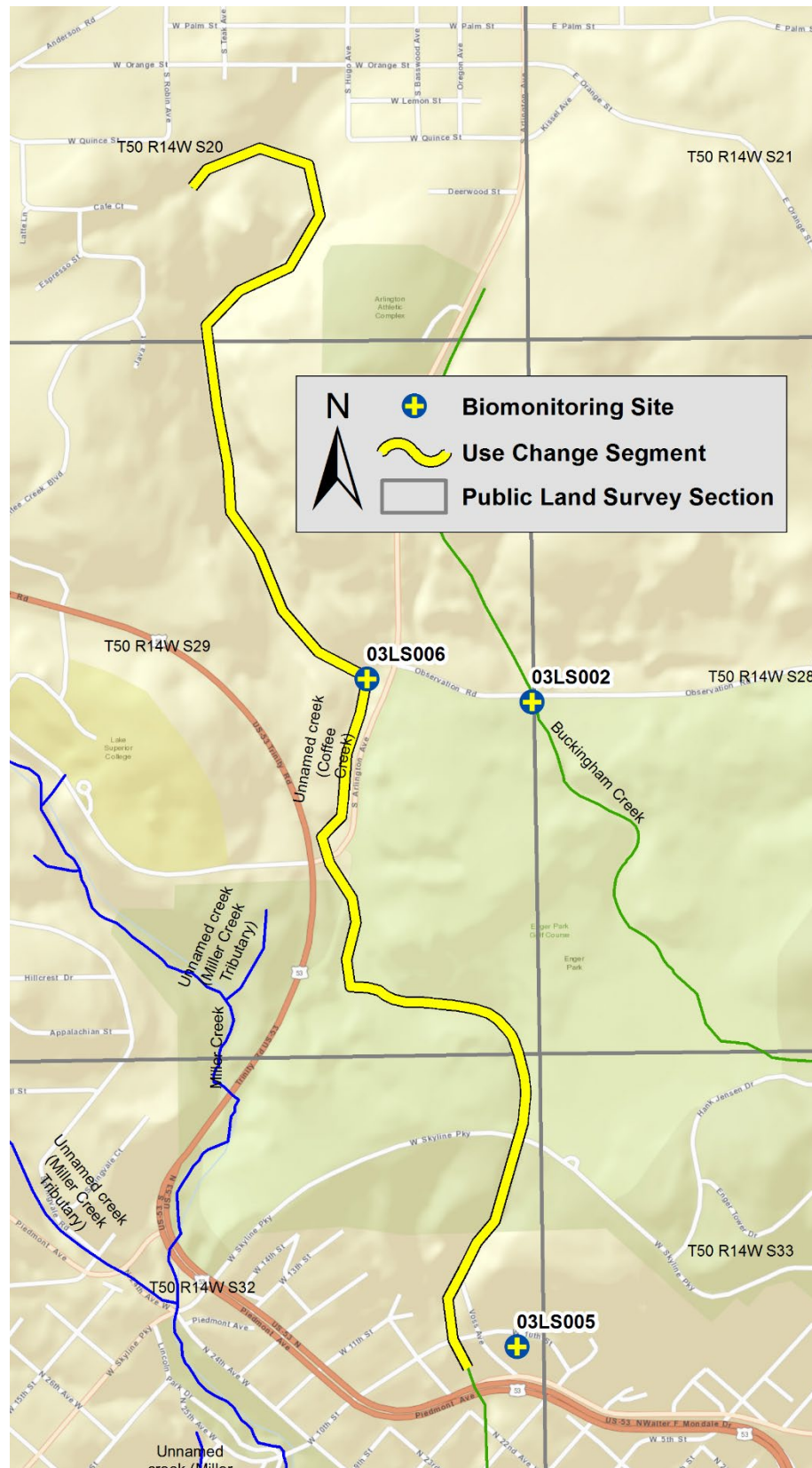
Knowlton Creek (04010201-985)



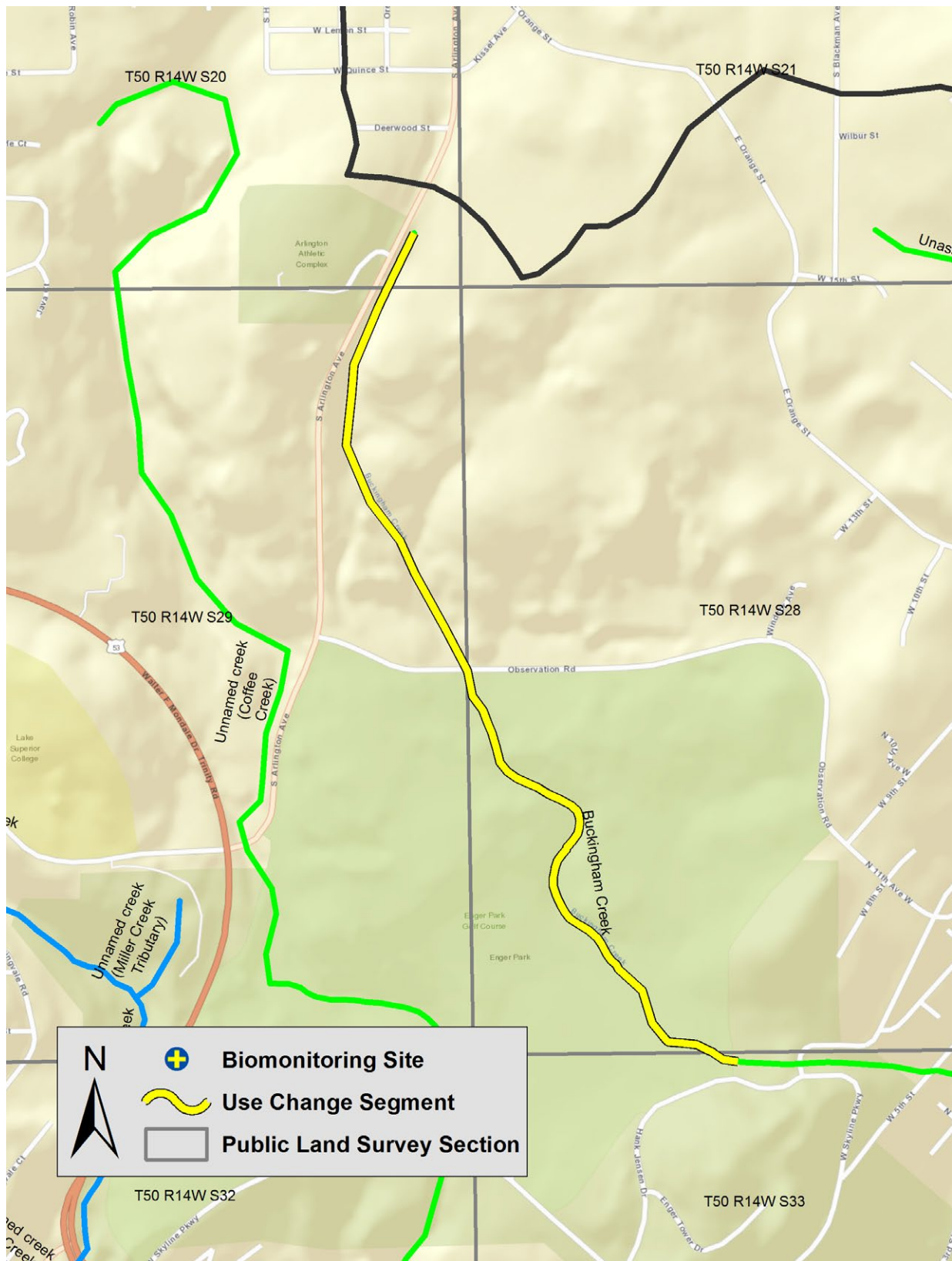
Unnamed creek (Merritt Creek) (04010201-987, 04010201-A80, 04010201-A81)



Unnamed creek (Coffee Creek) (04010201-A82)



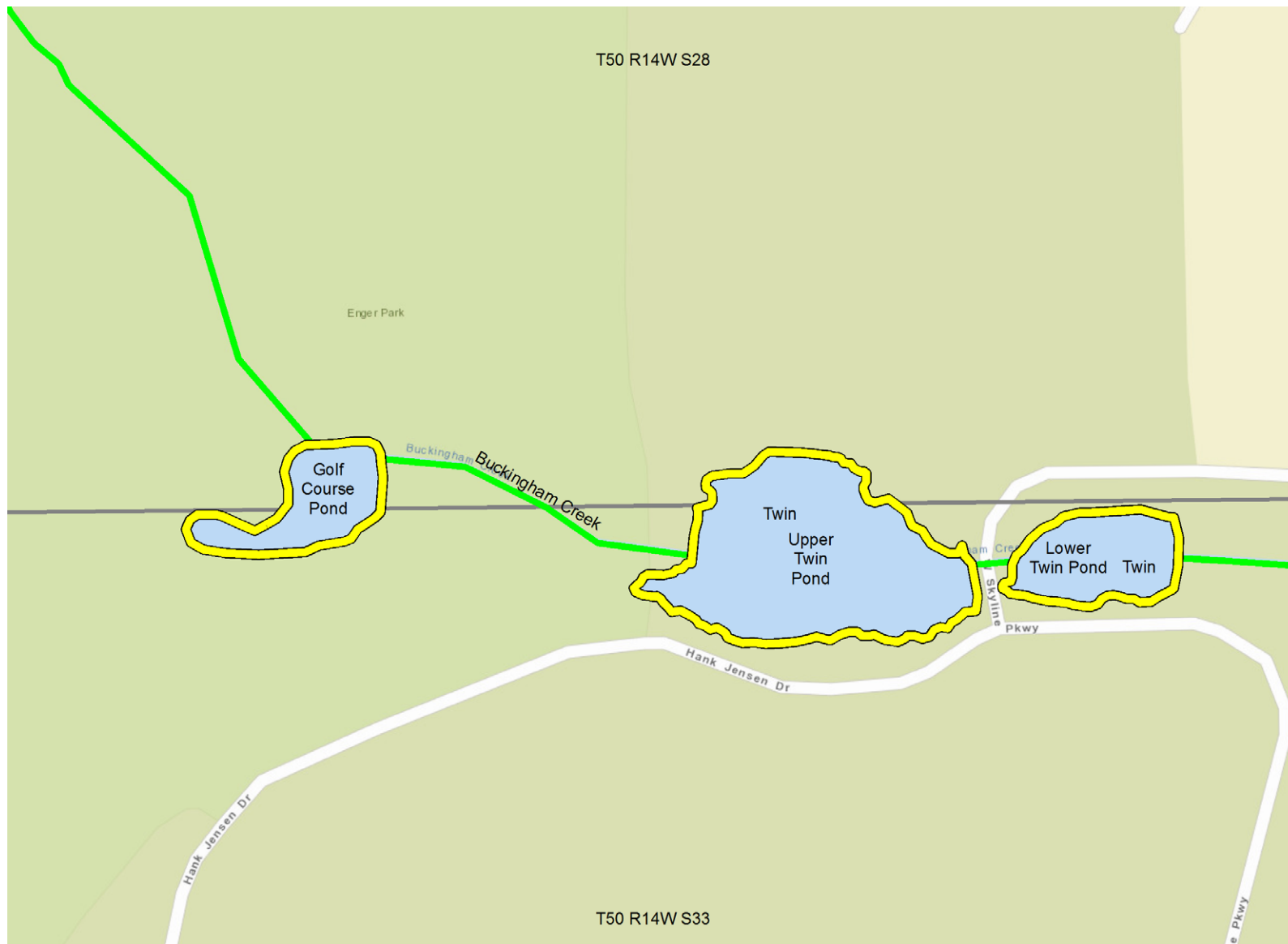
Buckingham Creek (04010201-B02)



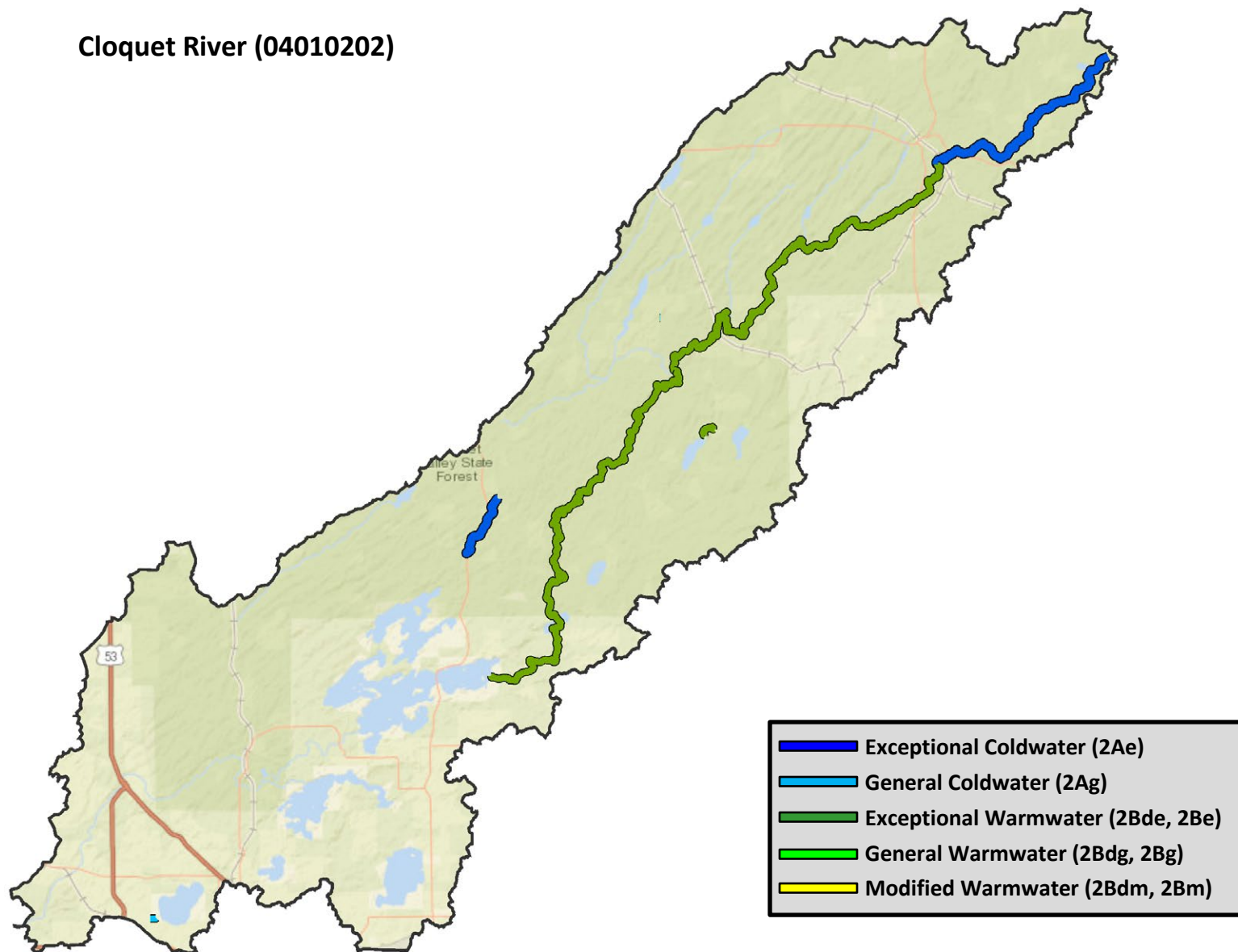
Cedar Lake (69-0431-00)



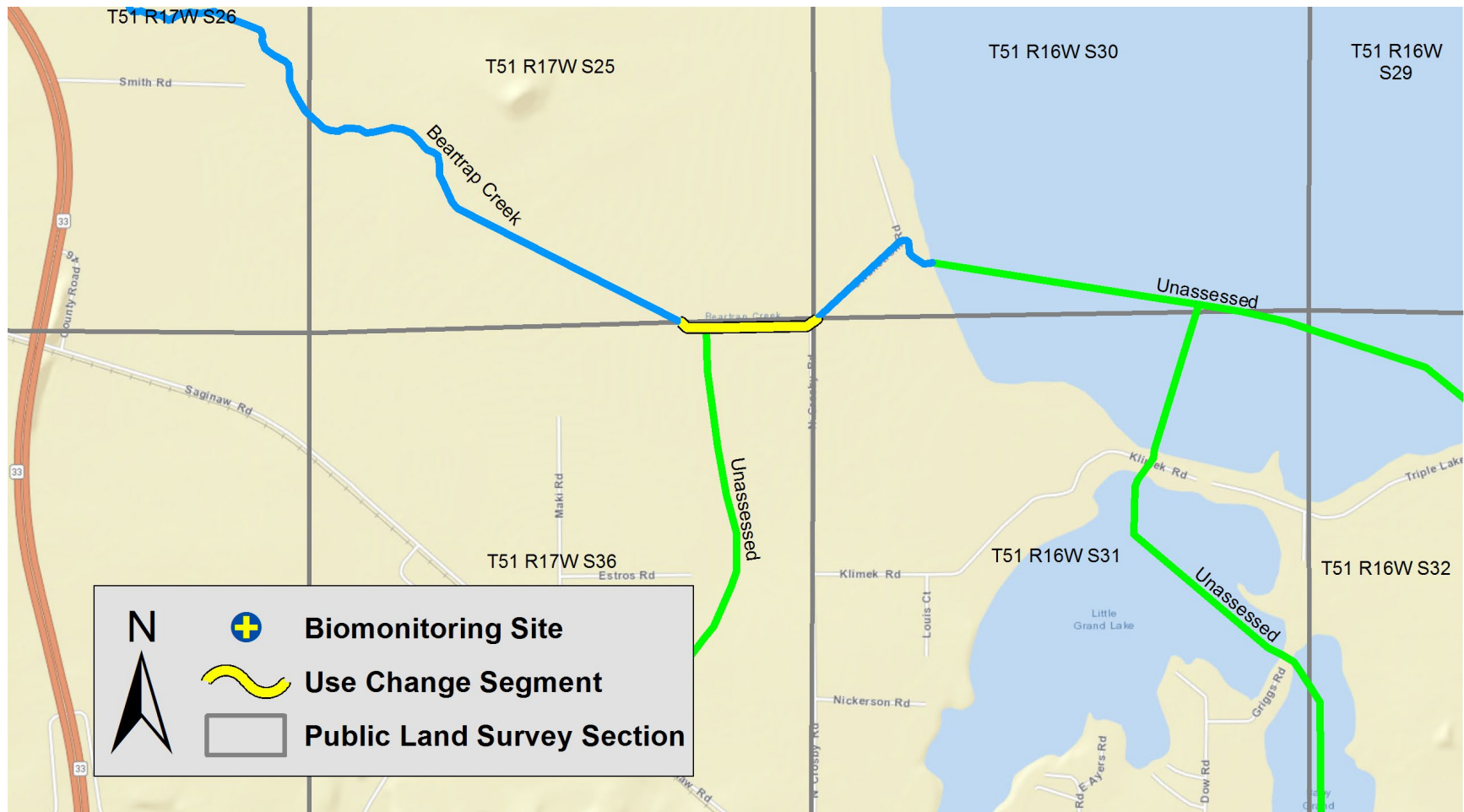
Lower Twin Lake (69-0967-00), Upper Twin Lake (69-0967-01), and Golf Course Pond (69-1345-00)



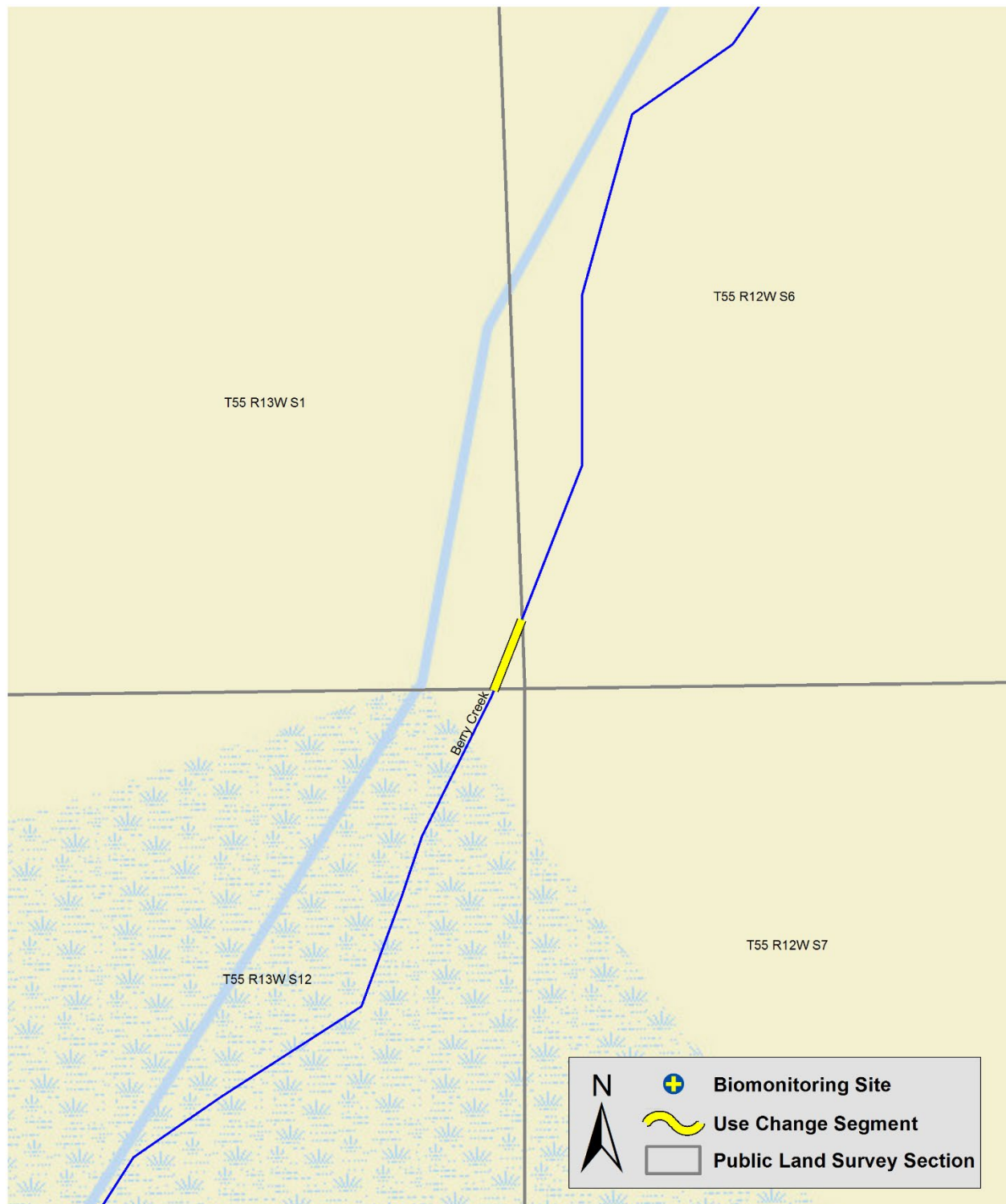
Cloquet River (04010202)



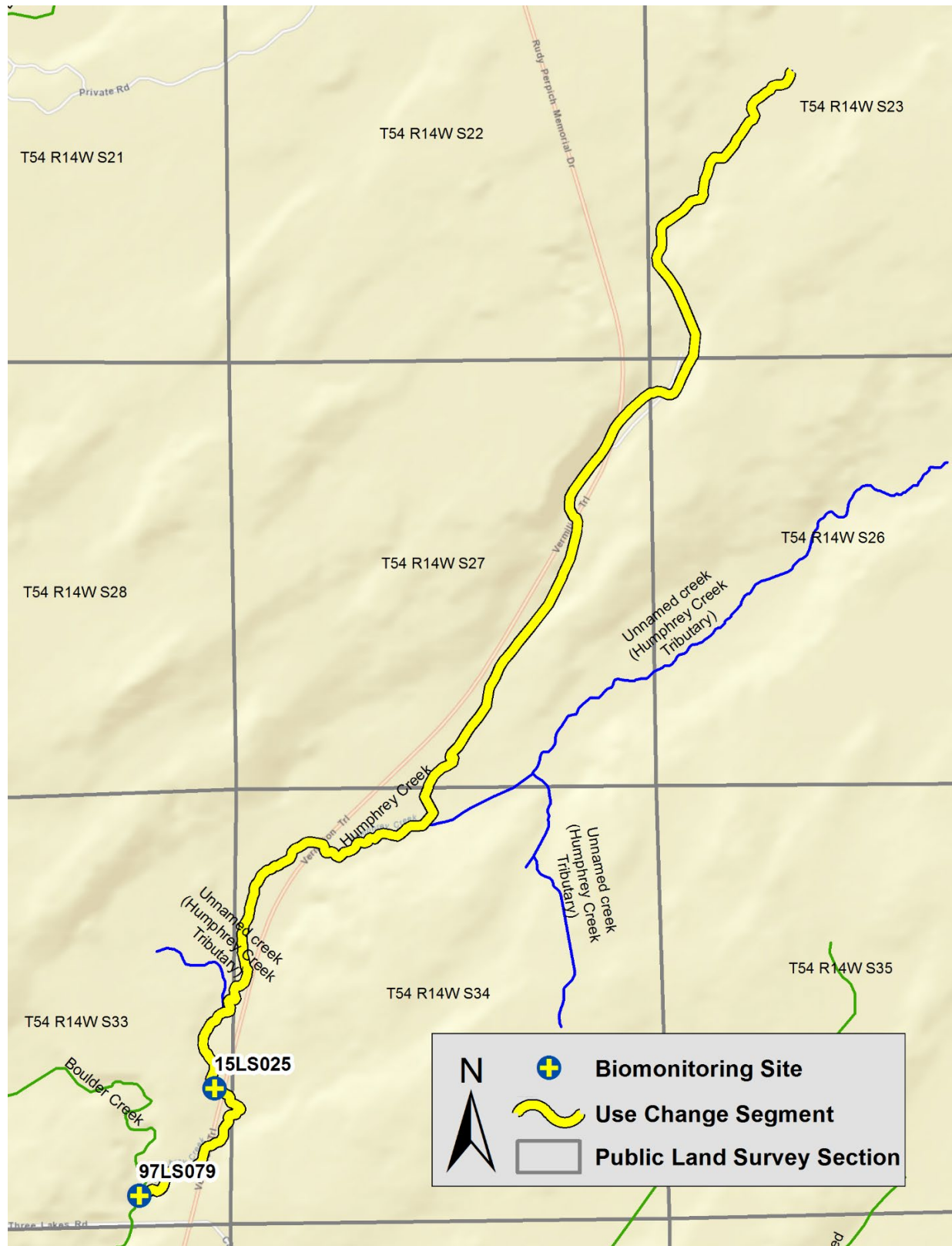
Beartrap Creek (04010202-520)



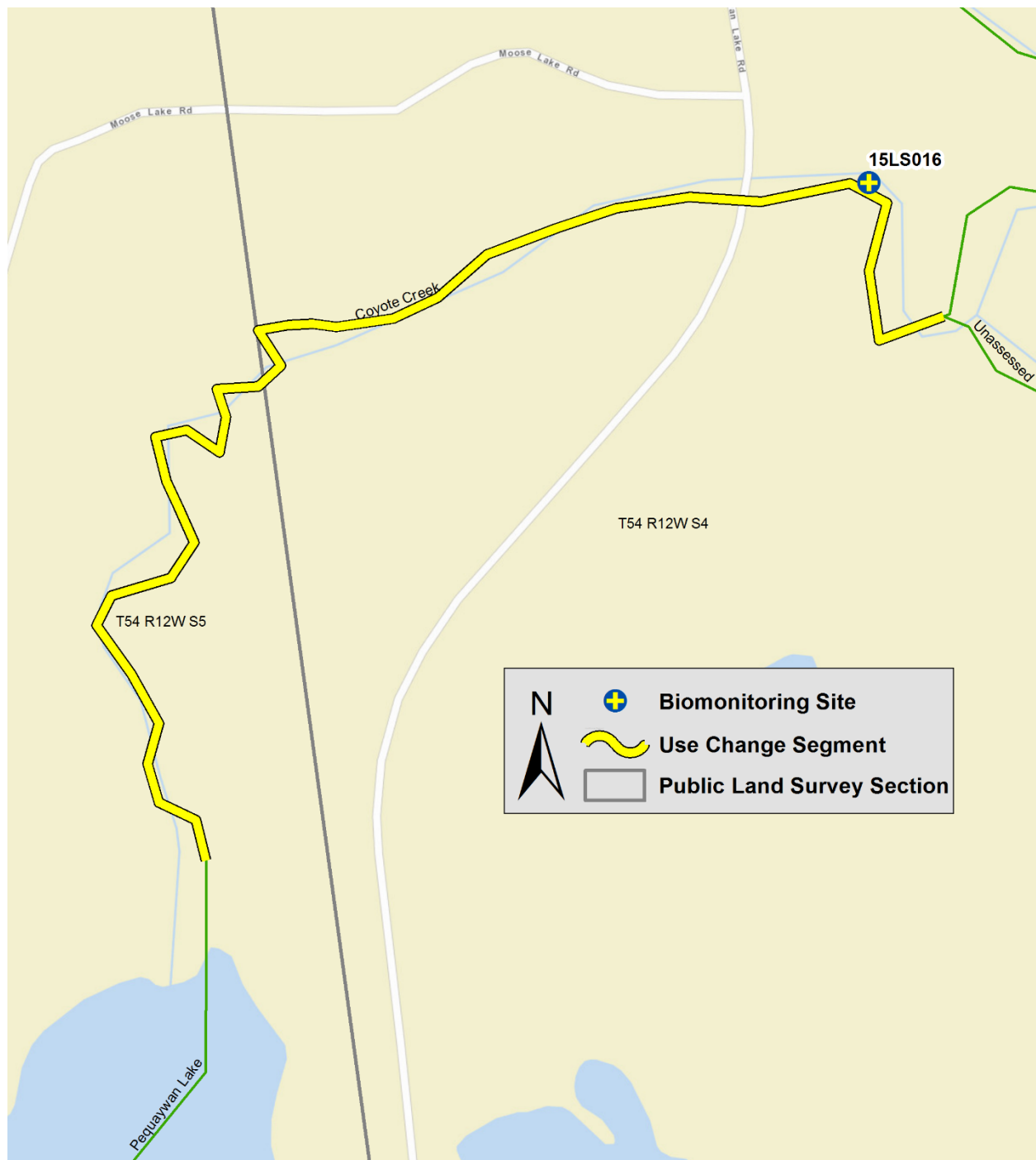
Berry Creek (04010202-526)



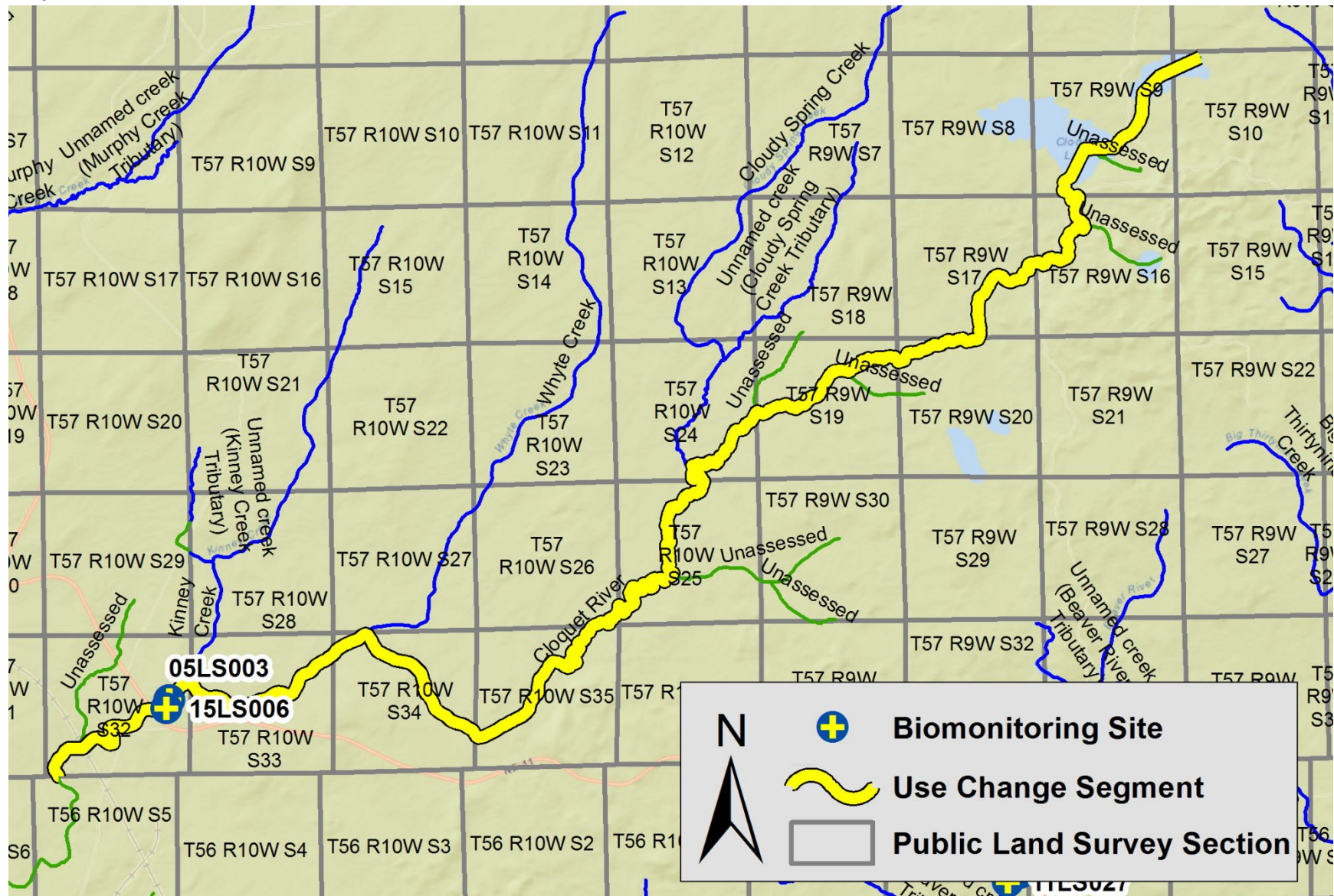
Humphrey Creek (04010202-530)



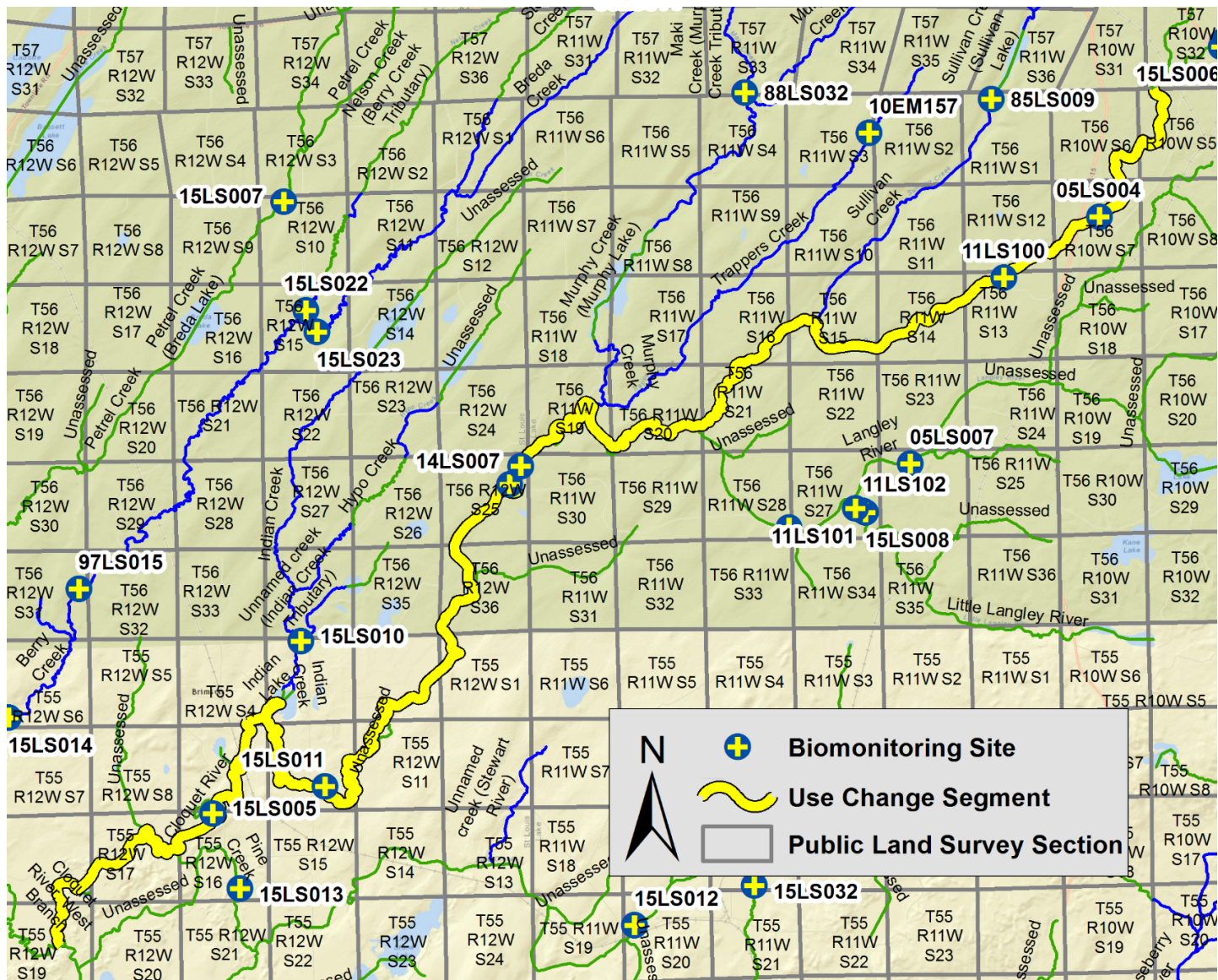
Coyote Creek (04010202-584)



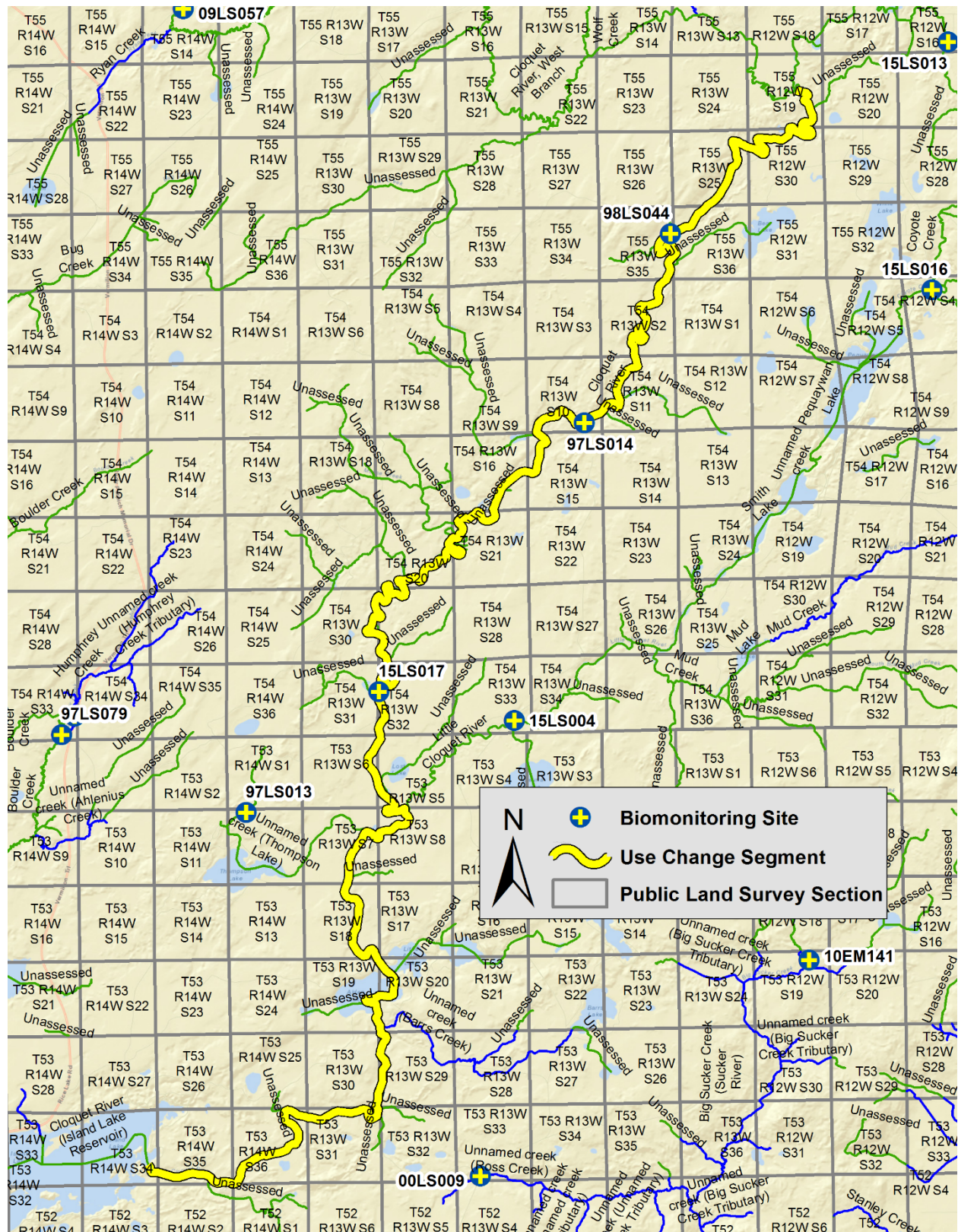
Cloquet River (04010202-669)



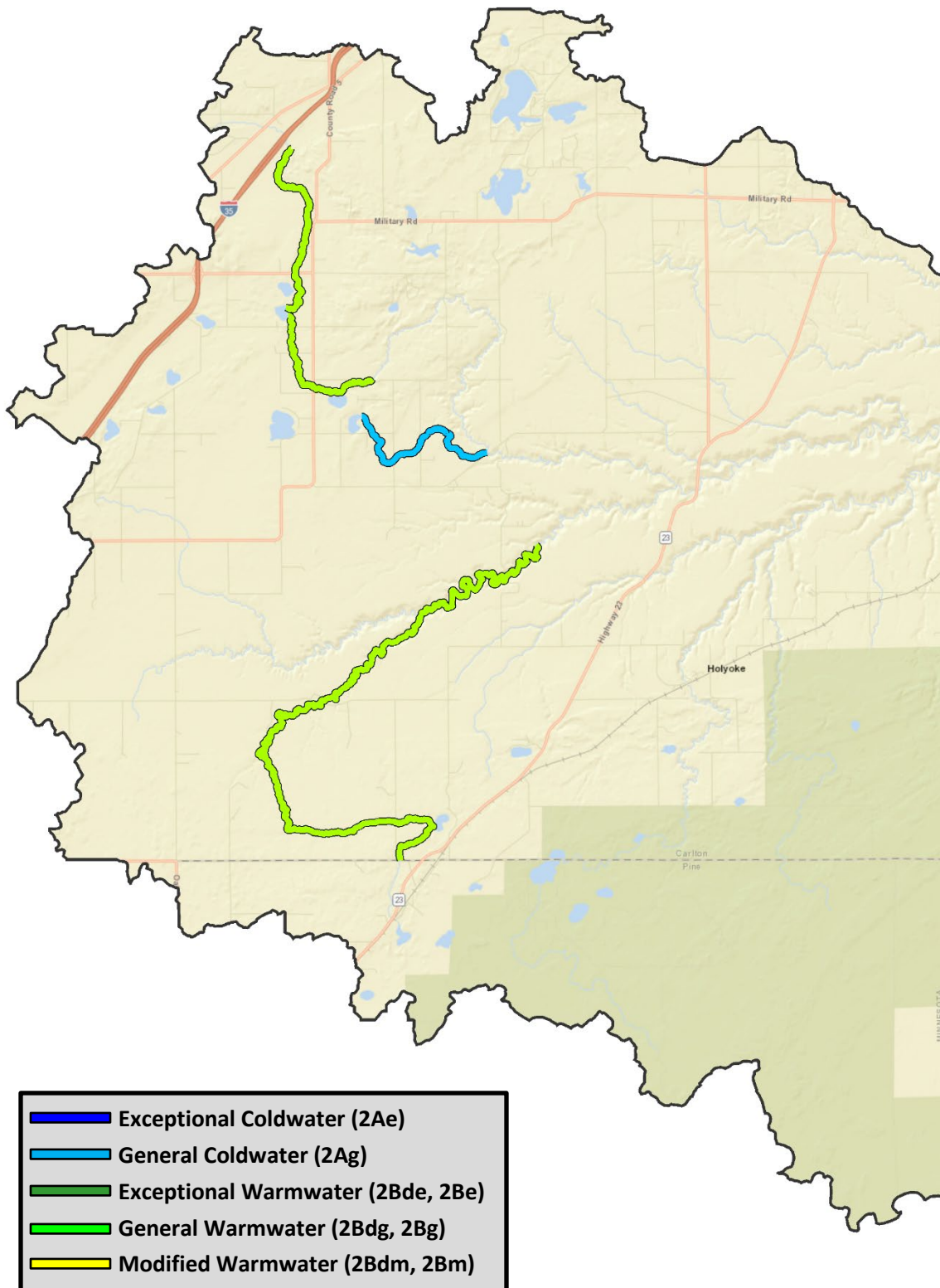
Cloquet River (04010202-670)



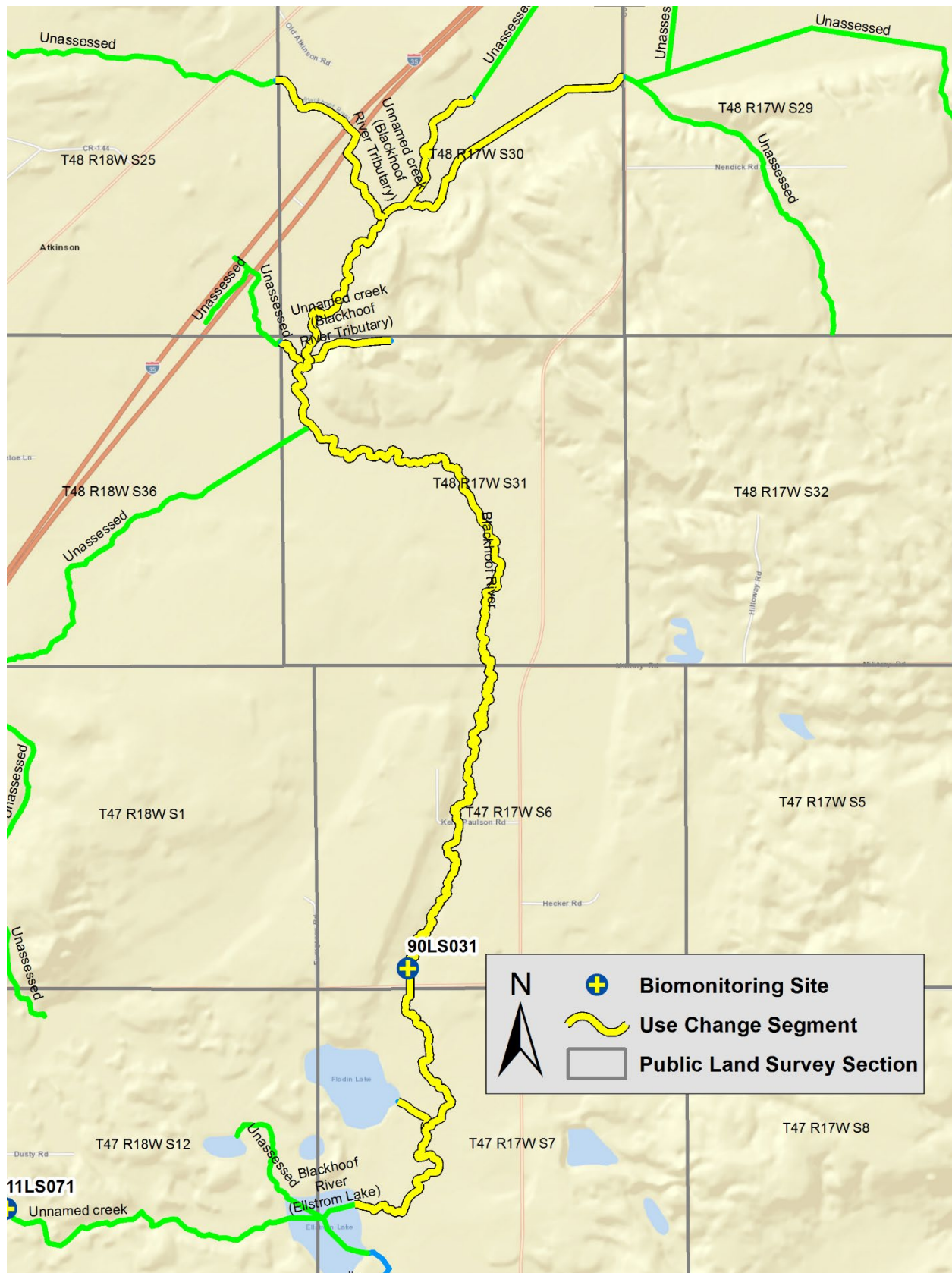
Cloquet River (04010202-671)



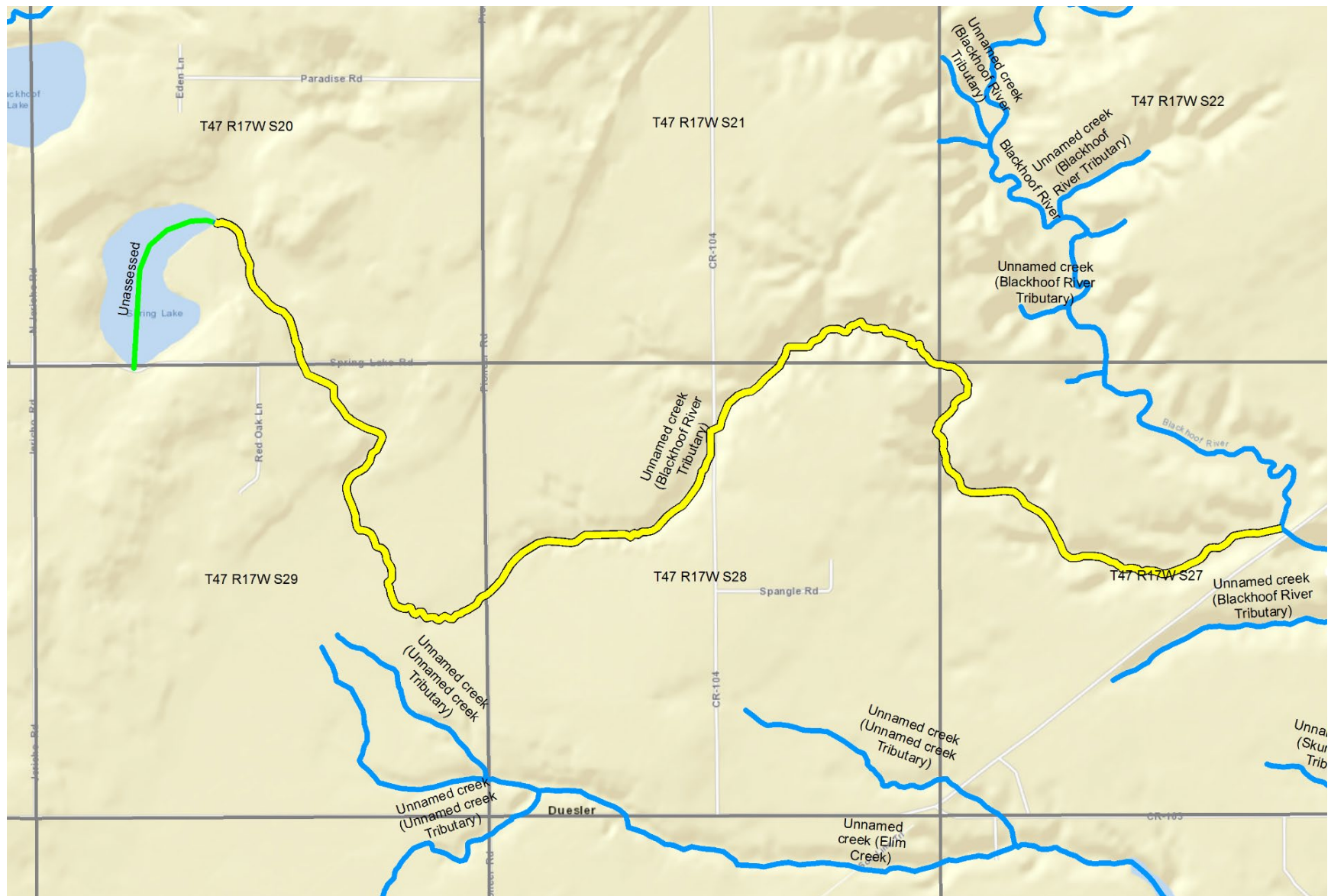
Nemadji River (04010301)



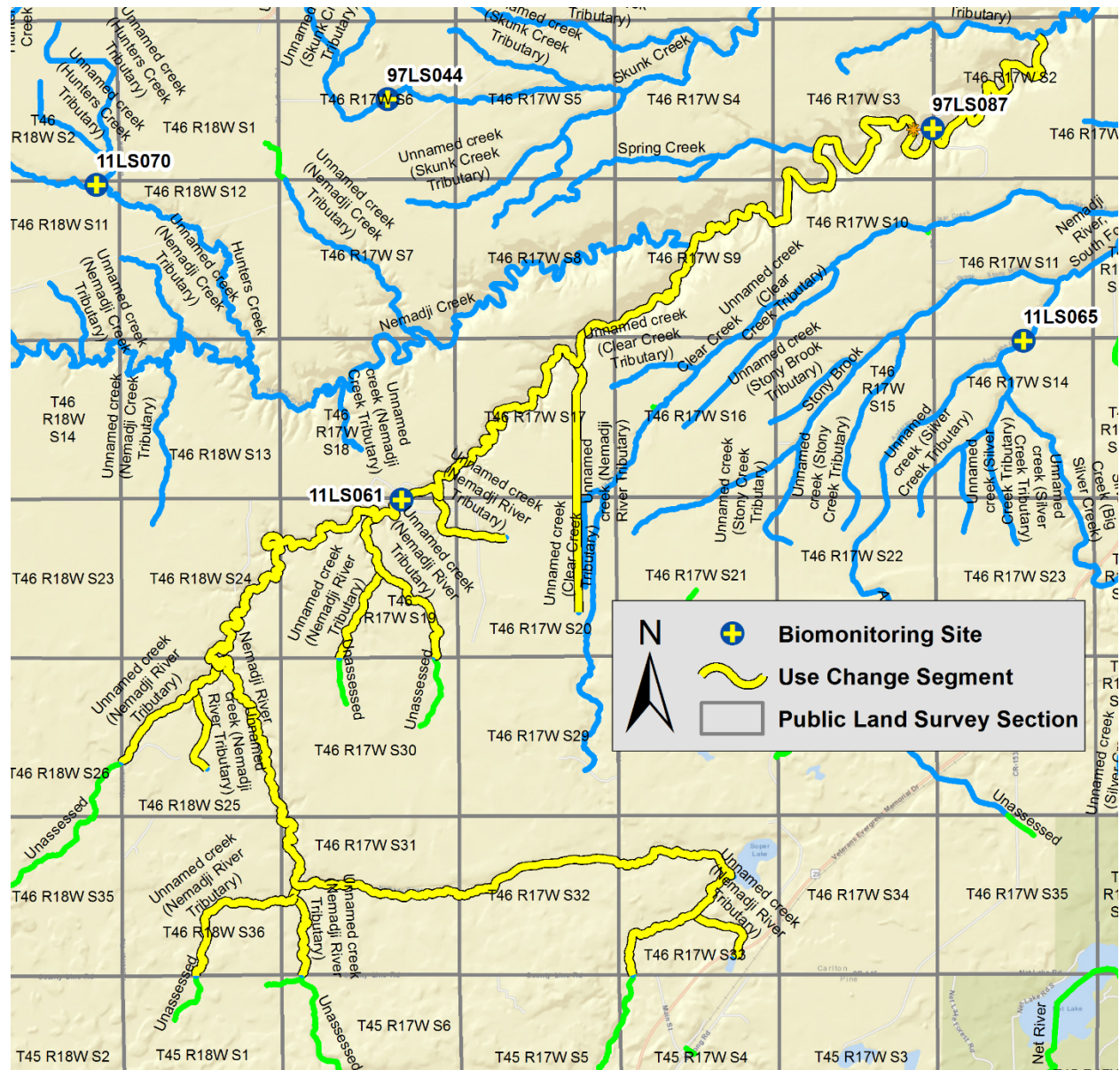
Blackhoof River (04010301-519)



Unnamed creek (Blackhoof River Tributary) (04010301-523, 04010301-524, 04010301-525)



Nemadji River (04010301-757)



Blackhoof River (04010301-761)

