

## 2026 Modification to South Metro Mississippi Total Suspended Solids Total Maximum Daily Load Report

### GENERAL INFORMATION

<b>TMDL project name</b>	<a href="#">South Metro Mississippi TSS TMDL</a>
<b>Date of original EPA TMDL approval</b>	April 26, 2016
<b>TMDL Modification Public Notice Dates</b>	January 5, 2026- February 4, 2026
<b>TMDL Assessment Unit Identification (AUID) and pollutants that require modification</b>	07010206-505 – total suspended solids (TSS) 07010206-504 – total suspended solids (TSS) 07010206-502 – total suspended solids (TSS) 07010206-501 – total suspended solids (TSS) 07040001-531 – total suspended solids (TSS)
<b>TMDL tables being modified</b>	Table 7: Annual allocations of TSS for average flow conditions of the South Metro Mississippi. Table 8: Annual allocations of TSS for a range of flow conditions of the South Metro Mississippi. Table 9: Daily allocations of TSS for a range of flow conditions of the South Metro Mississippi.

### EXPLANATION OF MODIFICATION

#### **What is being changed from the final Total Maximum Daily Load (TMDL) to the modified TMDL?**

The Minnesota Pollution Control Agency (MPCA) is making adjustments to Municipal Separate Storm Sewer Systems (MS4s) wasteload allocations (WLAs) to account for 10 new permittees, 11 terminated permittees, corrections to the original MS4 permittee list and changes in developed land cover area (2021 NLCD vs 2011 NLCD) for existing MS4 permittees within the TMDL project area. This modification also clarifies which MS4 permittees require reductions and which do not. The adjustments will not change the approved overall total loading capacities of the TMDLs.

This memo does not reflect any wastewater modifications, expansions or corrections, which may have affected the overall loading capacity. Wastewater permit limits are established at levels that do not contribute to impairments and wastewater treatment plant modification data are not readily available to incorporate into this modification.

#### **Given the modification described, are there any changes to Stormwater Pollution Prevention Programs (SWPPPs) to account for the modified WLAs? When will the SWPPPs be updated?**

Permitted MS4s (Table 1) with applicable WLAs (WLAs that require reductions) will be required to account for the TSS impaired reaches of the South Metro Mississippi TMDL in their SWPPPs when the MS4 General Permit is reissued.

- Becker Township, Belle Plaine City, Chisago City, Delano City, Jordan City, Linwood Township, Livonia Township, New Prague City, Zimmerman City, and Wright County MS4s will be required to submit SWPPPs when they apply for permit coverage (expected in 2027).
- Current MS4 permittees will be required to submit updated SWPPPs when they apply for permit coverage under the reissued MS4 General Permit (expected in 2026).

**Table 1. Modified Appendix B – Regulated MS4 List (Page 112-119 of TMDL report; additions underlined and removals struck through).**

<b>MS4ID</b>	<b>Name</b>	<b>Notes</b>
MNR040000	Minnesota Phase II MS4s	
WI-S050075-1	Wisconsin Phase II MS4s	
* <u>MS400281</u>	Albertville MS4	<u>Reductions required.</u> <sup>2</sup>
MS400264	Alexandria City MS4	<u>No reductions required.</u> <sup>1</sup>
MS400073	Andover City MS4	<u>No reductions required.</u> <sup>1</sup>
MS400001	Anoka City MS4	<u>No reductions required.</u> <sup>1</sup>
MS400066	Anoka County MS4	<u>Reductions required.</u> <sup>2</sup>
<del>MS400222</del>	<del>Anoka Technical College MS4</del>	<u>Permit coverage terminated as of 2/13/2018</u>
MS400223	Anoka-Ramsey Community College MS4	<u>No reductions required.</u> <sup>1</sup>
MS400074	Apple Valley City MS4	<u>Reductions required.</u> <sup>3</sup>
MS400002	Arden Hills City MS4	<u>No reductions required.</u> <sup>1</sup>
*† <u>MS400337</u>	<del>Baldwin Township City</del> <u>MS4</u>	<u>No reductions required.</u> <sup>1</sup>
MS400231	Baxter City MS4	<u>No reductions required.</u> <sup>1</sup>
* <u>MS400295</u>	Bayport City MS4	<u>No reductions required.</u> <sup>1</sup>
† <u>MS400330</u>	<u>Becker Township MS4</u>	<u>No reductions required.</u> <sup>1</sup>
† <u>MS400338</u>	<u>Belle Plaine City MS4</u>	<u>Reductions required.</u> <sup>3</sup>
MS400067	Benton County MS4	<u>No reductions required.</u> <sup>1</sup>
MS400249	Big Lake City MS4	<u>No reductions required.</u> <sup>1</sup>
MS400234	Big Lake Township MS4	<u>No reductions required.</u> <sup>1</sup>
<u>MS400004</u>	<u>Birchwood Village MS4</u>	<u>No reductions required.</u> <sup>1</sup>
MS400075	Blaine City MS4	<u>No reductions required.</u> <sup>1</sup>
MS400005	Bloomington City MS4	<u>Reductions required.</u> <sup>3</sup>
* <u>MS400276</u>	Blue Earth County MS4	<u>Reductions required.</u> <sup>3</sup>
MS400266	Brainerd City MS4	<u>No reductions required.</u> <sup>1</sup>
MS400068	Brockway Township MS4	<u>No reductions required.</u> <sup>1</sup>
MS400006	Brooklyn Center City MS4	<u>No reductions required.</u> <sup>1</sup>
MS400007	Brooklyn Park City MS4	<u>No reductions required.</u> <sup>1</sup>
MS400238	Buffalo city of MS4	<u>Reductions required.</u> <sup>3</sup>
MS400069	<del>Burns Township MS4</del> <u>Nowthen City MS4</u>	<u>No reductions required.</u> <sup>1</sup>
MS400076	Burnsville City MS4	<u>Reductions required.</u> <sup>3</sup>
MS400250	Cambridge City MS4	<u>No reductions required.</u> <sup>1</sup>
MS400206	Capitol Region WD MS4	<u>Reductions required.</u> <sup>2</sup>
MS400077	Carver City MS4	<u>Reductions required.</u> <sup>3</sup>
MS400070	Carver County MS4	<u>Reductions required.</u> <sup>2</sup>
MS400078	Centerville City MS4	<u>No reductions required.</u> <sup>1</sup>
MS400171	Century College MS4	<u>Reductions required.</u> <sup>2</sup>
MS400008	Champlin City MS4	<u>No reductions required.</u> <sup>1</sup>
MS400079	Chanhassen City MS4	<u>Reductions required.</u> <sup>2</sup>
MS400080	Chaska City MS4	<u>Reductions required.</u> <sup>3</sup>
† <u>MS400339</u>	<u>Chisago City MS4</u>	<u>No reductions required.</u> <sup>1</sup>
MS400009	Circle Pines City MS4	<u>No reductions required.</u> <sup>1</sup>

<b>MS4ID</b>	<b>Name</b>	<b>Notes</b>
MS400010	Columbia Heights City MS4	<u>No reductions required.</u> <sup>1</sup>
MS400172	Coon Creek WD MS4	<u>No reductions required.</u> <sup>1</sup>
MS400011	Coon Rapids City MS4	<u>No reductions required.</u> <sup>1</sup>
MS400081	Corcoran City MS4	<u>Reductions required.</u> <sup>2</sup>
MS400082	Cottage Grove City MS4	<u>Reductions required.</u> <sup>2</sup>
MS400131	Credit River <del>Township</del> <u>City</u> MS4	<u>Reductions required.</u> <sup>3</sup>
MS400012	Crystal City MS4	<u>No reductions required.</u> <sup>1</sup>
MS400132	Dakota County MS4	<u>Reductions required.</u> <sup>3</sup>
<del>MS400254</del>	<del>Dakota County Technical College</del> MS4	<u>Terminated as of February 13, 2018</u>
MS400083	Dayton City MS4	<u>Reductions required.</u> <sup>2</sup>
MS400013	Deephaven City MS4	<u>Reductions required.</u> <sup>2</sup>
<u>†MS400332</u>	<u>Delano City</u> MS4	<u>Reductions required.</u> <sup>3</sup>
MS400084	Dellwood City MS4	<u>No reductions required.</u> <sup>1</sup>
MS400014	Eagan City MS4	<u>Reductions required.</u> <sup>3</sup>
<u>*MS400284</u>	Eagle Lake City MS4	<u>Reductions required.</u> <sup>3</sup>
MS400087	East Bethel City MS4	<u>No reductions required.</u> <sup>1</sup>
MS400015	Eden Prairie City MS4	<u>Reductions required.</u> <sup>3</sup>
MS400016	Edina City MS4	<u>Reductions required.</u> <sup>2</sup>
MS400089	Elk River City MS4	<u>No reductions required.</u> <sup>1</sup>
MS400237	Elko-New Market City MS4	<u>Reductions required.</u> <sup>3</sup>
MS400135	Empire <del>Township</del> <u>City</u> MS4	<u>Reductions required.</u> <sup>3</sup>
MS400017	Excelsior City MS4	<u>No reductions required.</u> <sup>1</sup>
MS400239	Fairmont City MS4	<u>Reductions required.</u> <sup>3</sup>
MS400018	Falcon Heights City MS4	<u>Reductions required.</u> <sup>2</sup>
MS400233	Faribault City MS4	<u>Reductions required.</u> <sup>3</sup>
MS400090	Farmington City MS4	<u>Reductions required.</u> <sup>3</sup>
<del>MS400175</del>	<del>Federal Medical Center</del> MS4	<u>Terminated as of February 28, 2017</u>
MS400262	Forest Lake MS4	<u>No reductions required.</u> <sup>1</sup>
MS400019	Fridley City MS4	<u>No reductions required.</u> <sup>1</sup>
MS400020	Gem Lake City MS4	<u>Reductions required.</u> <sup>3</sup>
MS400252	Glencoe City MS4	<u>Reductions required.</u> <sup>3</sup>
MS400021	Golden Valley City MS4	<u>No reductions required.</u> <sup>1</sup>
MS400091	Grant City MS4	<u>No reductions required.</u> <sup>1</sup>
MS400022	Greenwood City MS4	<u>No reductions required.</u> <sup>1</sup>
MS400092	Ham Lake City MS4	<u>No reductions required.</u> <sup>1</sup>
<u>*MS400286</u>	Hanover City MS4	<u>Reductions required.</u> <sup>3</sup>
MS400240	Hastings City MS4	<u>Reductions required.</u> <sup>3</sup>
<del>MS400136</del>	<del>Haven Township</del> MS4	<u>Permit coverage terminated as of 5/15/2019</u>
MS400138	Hennepin County MS4	<u>Reductions required.</u> <sup>2</sup>
MS400198	Hennepin Technical College Brooklyn Pk - MS4	<u>No reductions required.</u> <sup>1</sup>
MS400199	Hennepin Technical College Eden Prairie MS4	<u>Reductions required.</u> <sup>3</sup>

<b>MS4ID</b>	<b>Name</b>	<b>Notes</b>
MS400023	Hilltop City MS4	<u>No reductions required.</u> <sup>1</sup>
MS400024	Hopkins City MS4	<u>Reductions required.</u> <sup>2</sup>
MS400094	Hugo City MS4	<u>No reductions required.</u> <sup>1</sup>
MS400248	Hutchinson City MS4	<u>Reductions required.</u> <sup>3</sup>
MS400095	Independence City MS4	<u>Reductions required.</u> <sup>2</sup>
MS400096	Inver Grove Heights City MS4	<u>Reductions required.</u> <sup>3</sup>
MS400224	Inver Hills Community College MS4	<u>Reductions required.</u> <sup>3</sup>
* <u>MS400287</u>	Isanti City MS4	<u>No reductions required.</u> <sup>1</sup>
MS400140	Jackson Township MS4	<u>Reductions required.</u> <sup>3</sup>
† <u>MS400341</u>	<u>Jordan City MS4</u>	<u>Reductions required.</u> <sup>3</sup>
* <u>MS400288</u>	Lake City MS4	<u>Reductions required.</u> <sup>3</sup>
MS400098	Lake Elmo City MS4	<u>Reductions required.</u> <sup>2</sup>
MS400142	Laketown Township MS4	<u>Reductions required.</u> <sup>2</sup>
MS400099	Lakeville City MS4	<u>Reductions required.</u> <sup>3</sup>
MS400025	Landfall City MS4	<u>Reductions required.</u> <sup>3</sup>
MS400026	Lauderdale City MS4	<u>No reductions required.</u> <sup>1</sup>
MS400143	Le Sauk Township MS4	<u>No reductions required.</u> <sup>1</sup>
MS400027	Lexington City MS4	<u>No reductions required.</u> <sup>1</sup>
MS400028	Lilydale City MS4	<u>Reductions required.</u> <sup>3</sup>
MS400100	Lino Lakes City MS4	<u>Reductions required.</u> <sup>2</sup>
† <u>MS400342</u>	<u>Linwood Township MS4</u>	<u>No reductions required.</u> <sup>1</sup>
MS400253	Litchfield City MS4	<u>Reductions required.</u> <sup>3</sup>
MS400029	Little Canada City MS4	<u>Reductions required.</u> <sup>3</sup>
MS400227	Little Falls City MS4	<u>No reductions required.</u> <sup>1</sup>
† <u>MS400333</u>	<u>Livonia Township MS4</u>	<u>No reductions required.</u> <sup>1</sup>
MS400101	Long Lake City MS4	<u>No reductions required.</u> <sup>1</sup>
MS400030	Loretto City MS4	<u>Reductions required.</u> <sup>3</sup>
MS400144	Louisville Township MS4	<u>Reductions required.</u> <sup>3</sup>
MS400031	Mahtomedi City MS4	<u>No reductions required.</u> <sup>1</sup>
MS400226	Mankato City MS4	<u>Reductions required.</u> <sup>3</sup>
* <u>MS400297</u>	Mankato Township MS4	<u>Reductions required.</u> <sup>3</sup>
MS400102	Maple Grove City MS4	<u>No reductions required.</u> <sup>1</sup>
MS400103	Maple Plain City MS4	<u>Reductions required.</u> <sup>2</sup>
MS400032	Maplewood City MS4	<u>Reductions required.</u> <sup>2</sup>
MS400241	Marshall City MS4	<u>Reductions required.</u> <sup>3</sup>
MS400104	Medicine Lake City MS4	<u>No reductions required.</u> <sup>1</sup>
MS400105	Medina City MS4	<u>Reductions required.</u> <sup>2</sup>
MS400033	Mendota City MS4	<u>Reductions required.</u> <sup>3</sup>
MS400034	Mendota Heights City MS4	<u>Reductions required.</u> <sup>3</sup>
MS400201	Metropolitan State University - MS4	<u>Reductions required.</u> <sup>3</sup>
<del>MS400146</del>	<del>Midway Township MS4</del>	<u>Not in project area</u>
MS400147	Minden Township MS4	<u>No reductions required.</u> <sup>1</sup>

<b>MS4ID</b>	<b>Name</b>	<b>Notes</b>
MN0061018	Minneapolis Municipal Storm Water	<u>Reductions required.</u> <sup>2</sup>
MS400182	Minnehaha Creek WD MS4	<u>No reductions required.</u> <sup>1</sup>
MS400177	Minnesota Correctional-Lino Lakes MS4	<u>No reductions required.</u> <sup>1</sup>
MS400179	Minnesota Correctional-St Cloud MS4	<u>No reductions required.</u> <sup>1</sup>
*	<del>Minnesota Correctional-Stillwater MS4</del>	<u>Permit coverage terminated as of 7/31/2025</u>
* <u>MS400279</u>	Minnesota State University – Mankato MS4	<u>Reductions required.</u> <sup>3</sup>
MS400036	Minnetonka Beach City MS4	<u>No reductions required.</u> <sup>1</sup>
MS400035	Minnetonka City MS4	<u>Reductions required.</u> <sup>2</sup>
MS400106	Minnetrista City MS4	<u>Reductions required.</u> <sup>2</sup>
MS400170	MNDOT Metro District MS4	<u>Reductions required.</u> <sup>2</sup>
MS400180	MNDOT Outstate District MS4	<u>Reductions required.</u> <sup>2</sup>
MS400261	Montevideo City MS4	<u>Reductions required.</u> <sup>3</sup>
MS400242	Monticello City MS4	<u>Reductions required.</u> <sup>2</sup>
<del>MS400274</del>	<del>Morris City MS4</del>	<u>Not in project area</u>
MS400108	Mound City MS4	<u>No reductions required.</u> <sup>1</sup>
MS400037	Mounds View City MS4	<u>No reductions required.</u> <sup>1</sup>
* <u>MS400274</u>	<del>Morris City MS4</del>	
MS400207	Mpls Community/Technical College MS4	<u>No reductions required.</u> <sup>1</sup>
MS400038	New Brighton City MS4	<u>No reductions required.</u> <sup>1</sup>
MS400039	New Hope City MS4	<u>No reductions required.</u> <sup>1</sup>
† <u>MS400343</u>	<u>New Prague City MS4</u>	<u>Reductions required.</u> <sup>3</sup>
MS400228	New Ulm City MS4	<u>Reductions required.</u> <sup>3</sup>
MS400040	Newport City MS4	<u>Reductions required.</u> <sup>3</sup>
*	<del>Nicollet County MS4</del>	<u>Did not become MS4</u>
MS400255	Normandale Community College MS4	<u>Reductions required.</u> <sup>3</sup>
MS400260	North Branch City MS4	<u>No reductions required.</u> <sup>1</sup>
<del>MS400205</del>	<del>North Hennepin Community College-MS4</del>	<u>Permit coverage terminated as of 5/23/2025</u>
MS400229	North Mankato City MS4	<u>Reductions required.</u> <sup>3</sup>
MS400109	North Oaks City MS4	<u>Reductions required.</u> <sup>2</sup>
MS400041	North St Paul City MS4	<u>Reductions required.</u> <sup>2</sup>
MS400271	Northfield City MS4	<u>Reductions required.</u> <sup>3</sup>
MS400110	Oak Grove City MS4	<u>No reductions required.</u> <sup>1</sup>
* <u>MS400290</u>	Oak Park Heights City MS4	<u>No reductions required.</u> <sup>1</sup>
MS400042	Oakdale City MS4	<u>Reductions required.</u> <sup>2</sup>
MS400111	Orono City MS4	<u>No reductions required.</u> <sup>1</sup>
MS400043	Osseo City MS4	<u>No reductions required.</u> <sup>1</sup>
MS400243	Otsego City MS4	<u>Reductions required.</u> <sup>2</sup>
MS400244	Owatonna City MS4	<u>Reductions required.</u> <sup>3</sup>
MS400044	Pine Springs City MS4	<u>No reductions required.</u> <sup>1</sup>
MS400112	Plymouth City MS4	<u>No reductions required.</u> <sup>1</sup>
MS400113	Prior Lake City MS4	<u>Reductions required.</u> <sup>3</sup>

<b>MS4ID</b>	<b>Name</b>	<b>Notes</b>
<del>MS400189</del>	<del>Prior Lake-Spring Lake WSD MS4</del>	Permit coverage terminated as of 4/9/2025
MS400115	Ramsey City MS4	<u>No reductions required.</u> <sup>1</sup>
MS400191	Ramsey County Public Works MS4	<u>Reductions required.</u> <sup>2</sup>
MS400190	Ramsey-Washington Metro WD MS4	<u>Reductions required.</u> <sup>3</sup>
MS400235	Red Wing City MS4	<u>Reductions required.</u> <sup>3</sup>
MS400236	Redwood Falls City MS4	<u>Reductions required.</u> <sup>3</sup>
<del>MS400193</del>	<del>Rice Creek WD MS4</del>	Permit coverage terminated as of 4/9/2025
MS400045	Richfield City MS4	<u>Reductions required.</u> <sup>2</sup>
MS400046	Robbinsdale City MS4	<u>No reductions required.</u> <sup>1</sup>
* <u>MS400282</u>	Rogers City MS4	<u>Reductions required.</u> <sup>2</sup>
MS400117	Rosemount City MS4	<u>Reductions required.</u> <sup>3</sup>
MS400047	Roseville City MS4	<u>Reductions required.</u> <sup>2</sup>
MS400048	Sartell City MS4	<u>No reductions required.</u> <sup>1</sup>
MS400118	Sauk Rapids City MS4	<u>No reductions required.</u> <sup>1</sup>
MS400153	Sauk Rapids Township MS4	<u>No reductions required.</u> <sup>1</sup>
*	<del>Sauk River WD MS4</del>	<u>Did not become MS4</u>
MS400119	Savage City MS4	<u>Reductions required.</u> <sup>3</sup>
MS400154	Scott County MS4	<u>Reductions required.</u> <sup>3</sup>
MS400120	Shakopee City MS4	<u>Reductions required.</u> <sup>3</sup>
MS400155	Sherburne County MS4	<u>No reductions required.</u> <sup>1</sup>
MS400121	Shoreview City MS4	<u>Reductions required.</u> <sup>2</sup>
MS400122	Shorewood City MS4	<u>Reductions required.</u> <sup>2</sup>
* <u>MS400292</u>	Skyline City MS4	<u>Reductions required.</u> <sup>3</sup>
* <u>MS400299</u>	South Bend Township MS4	<u>Reductions required.</u> <sup>3</sup>
*	<del>South Central College – North Mankato Campus MS4</del>	<u>Did not become MS4</u>
MS400049	South St Paul City MS4	<u>Reductions required.</u> <sup>3</sup>
<del>MS400196</del>	<del>South Washington WD MS4</del>	Permit coverage terminated as of 12/12/2024
MS400050	Spring Lake Park City MS4	<u>No reductions required.</u> <sup>1</sup>
MS400156	Spring Lake Township MS4	<u>Reductions required.</u> <sup>3</sup>
MS400123	Spring Park City MS4	<u>No reductions required.</u> <sup>1</sup>
MS400051	St Anthony Village MS4	<u>No reductions required.</u> <sup>1</sup>
* <u>MS400293</u>	St Augusta City MS4	<u>No reductions required.</u> <sup>1</sup>
MS400124	St Bonifacius City MS4	<u>No reductions required.</u> <sup>1</sup>
MS400052	St Cloud City MS4	<u>No reductions required.</u> <sup>1</sup>
MS400197	St Cloud State University MS4	<u>No reductions required.</u> <sup>1</sup>
<del>MS400204</del>	<del>St Cloud Technical College – MS4</del>	Permit coverage terminated as of 10/3/2024
* <u>MS400296</u>	St Francis City MS4	<u>No reductions required.</u> <sup>1</sup>
MS400125	St Joseph City MS4	<u>No reductions required.</u> <sup>1</sup>
MS400157	St Joseph Township MS4	<u>No reductions required.</u> <sup>1</sup>
MS400053	St Louis Park City MS4	<u>No reductions required.</u> <sup>1</sup>
MS400246	St Michael City MS4	<u>Reductions required.</u> <sup>2</sup>

<b>MS4ID</b>	<b>Name</b>	<b>Notes</b>
MS400202	St Paul Community & Technical College - MS4	<u>Reductions required.</u> <sup>3</sup>
MN0061263	St Paul Municipal Storm Water	<u>Reductions required.</u> <sup>2</sup>
MS400054	St Paul Park City MS4	<u>Reductions required.</u> <sup>3</sup>
MS400245	St Peter City MS4	<u>Reductions required.</u> <sup>3</sup>
MS400159	Stearns County MS4	<u>No reductions required.</u> <sup>1</sup>
MS400259	Stillwater City MS4	<u>No reductions required.</u> <sup>1</sup>
MS400055	Sunfish Lake City MS4	<u>Reductions required.</u> <sup>3</sup>
MS400056	Tonka Bay City MS4	<u>No reductions required.</u> <sup>1</sup>
MS400212	U of M-Twin Cities Campus MS4	<u>No reductions required.</u> <sup>1</sup>
<u>MS400298</u>	<u>VA Medical Center St. Cloud MS4</u>	<u>No reductions required.</u> <sup>1</sup>
MS400057	Vadnais Heights City MS4	<u>Reductions required.</u> <sup>3</sup>
<del>MS400217</del>	<del>Valley Branch WD MS4</del>	Permit coverage terminated 8/21/25
MS400126	Victoria City MS4	<u>Reductions required.</u> <sup>2</sup>
MS400232	Waconia City MS4	<u>Reductions required.</u> <sup>3</sup>
MS400127	Waite Park City MS4	<u>No reductions required.</u> <sup>1</sup>
MS400258	Waseca City MS4	<u>Reductions required.</u> <sup>3</sup>
MS400160	Washington County MS4	<u>Reductions required.</u> <sup>2</sup>
MS400161	Watab Township MS4	<u>No reductions required.</u> <sup>1</sup>
MS400058	Wayzata City MS4	<u>No reductions required.</u> <sup>1</sup>
MS400162	West Lakeland Township MS4	<u>No reductions required.</u> <sup>1</sup>
MS400059	West St Paul City MS4	<u>Reductions required.</u> <sup>3</sup>
MS400060	White Bear Lake City MS4	<u>Reductions required.</u> <sup>2</sup>
MS400163	White Bear Township MS4	<u>Reductions required.</u> <sup>2</sup>
MS400061	Willernie City MS4	<u>No reductions required.</u> <sup>1</sup>
MS400272	Willmar City MS4	<u>Reductions required.</u> <sup>3</sup>
MS400128	Woodbury City MS4	<u>Reductions required.</u> <sup>2</sup>
MS400129	Woodland City MS4	<u>No reductions required.</u> <sup>1</sup>
<u>†MS400164</u>	<u>Wright County MS4</u>	<u>Reductions required.</u> <sup>2</sup>
<u>*MS400294</u>	<u>Wyoming City MS4</u>	<u>No reductions required.</u> <sup>1</sup>
<u>†MS400344</u>	<u>Zimmerman City MS4</u>	<u>No reductions required.</u> <sup>1</sup>
WI-S050075-2 (31431)	River Falls, City, Wisconsin	
WI-S050075-2 (37192)	University of Wisconsin at River Falls	
WI-S050181-1 (52320)	Hudson, Wisconsin	
WI-S050181-1 (52317)	St. Joseph, Town, Wisconsin	

\*Minnesota MS4s designated after the 2010 census have not yet been assigned individual MS4 identification numbers.

†Proposed permit numbers for Minnesota MS4s designated after the 2020 decennial census.

<sup>1</sup>MS4 boundary entirely above Lock and Dam 1. No reductions required.

<sup>2</sup>MS4 boundary partially below Lock and Dam 1 or partially within Crow River watershed. Reductions required.

<sup>3</sup>MS4 boundary entirely below Lock and Dam 1 or in Crow River watershed. Reductions required.

### **Explanation of modifications:**

- There are 10 newly regulated MS4s: Becker Township, Belle Plaine City, Chisago City, Delano City, Jordan City, Linwood Township, Livonia Township, New Prague City, Zimmerman City, and Wright County (proposed permit numbers in Table 1). When the TMDLs were approved on April 26, 2016, any stormwater contributions from these entities were considered unregulated stormwater and were covered under the load allocations (LAs) as they were not designated as MS4s. Because it has been determined that the above listed entities will now be regulated MS4s under the next MS4 General Permit, a portion of the LA is being reallocated to WLAs for these MS4s.

There are 11 terminated MS4s (permit numbers and termination dates listed in Table 1): Anoka Technical College, Dakota County Technical College, Federal Medical Center, Haven Township, Minnesota Correctional - Stillwater MS4, North Hennepin Community College - MS4, Prior Lake-Spring Lake Watershed District MS4, Rice Creek WD MS4, South Washington Watershed District, St. Cloud Technical College MS4, Valley Branch Watershed District. The stormwater contributions associated with the colleges, watershed districts, medical center and correctional facility are located within other regulated MS4 areas and will remain assigned to MS4 WLA. However, the WLA assigned to Haven Township is not associated with any other regulated MS4's area and is being transferred back to the LA.

- Proposed MS4s listed in the report that never became permitted MS4s have been removed: Nicollet County MS4, Sauk River WD MS4, South Central College - North Mankato Campus MS4 (Table 1). Transfers include both WLA to LA and WLA to WLA.
- Permitted MS4 that were not listed in the TMDL report but are in the contributing drainage area have been added: Birchwood Village MS4, and VA Medical Center St Cloud MS4 (Table 1). Transfers are LA to WLA.
- Nowthen City MS4 was mistakenly listed as Burns Township MS4. Table 1 has been corrected, no transfer required.
- Permitted MS4s that are not in the contributing drainage area of the TMDL but were listed in the TMDL report in error were removed (Morris City MS4, Midway Township MS4). Transfers are WLA to LA.

### **Transfer methodology**

The MS4 WLA methodology in Section 6.1.2 of the TMDL report was followed, except that the 2021 National Land Cover Data (NLCD) was used instead of 2011.

The MPCA is proposing the following modifications:

### **South Metro Mississippi**

For the state of Minnesota, the MPCA is shifting between 933 and 2,857 metric tons/year of TSS depending on the flow zone from the LAs to the MS4 WLAs (Modified Table 7; Modified Table 8). This equates to between 2,557 and 7,827 kilograms/day of TSS depending on the flow zone that the MPCA is shifting from the LAs to the MS4 WLAs (Modified Table 9).

**MAPS**

**Figure 1. TSS TMDL Project Watershed and regulated MS4 areas.**

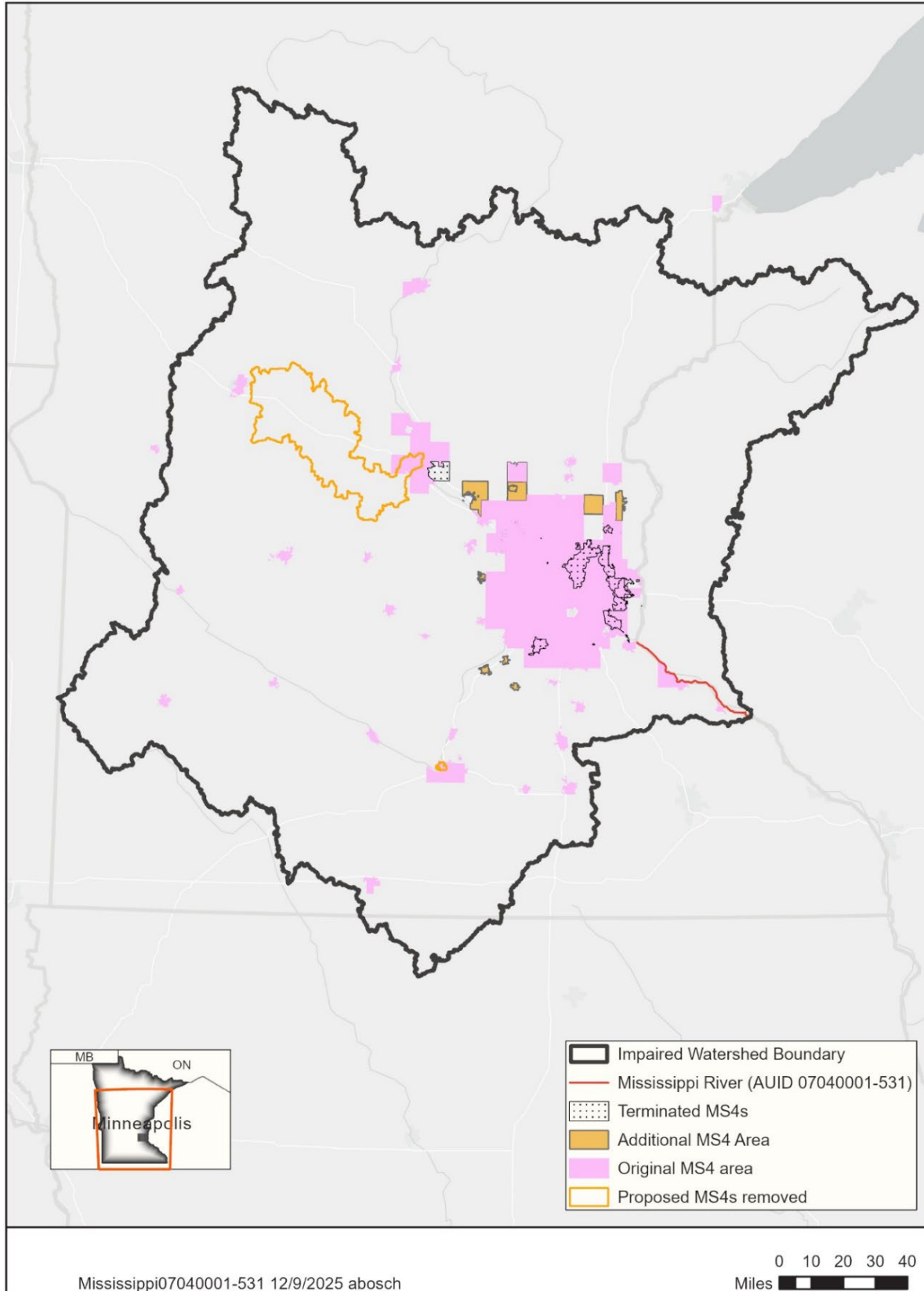
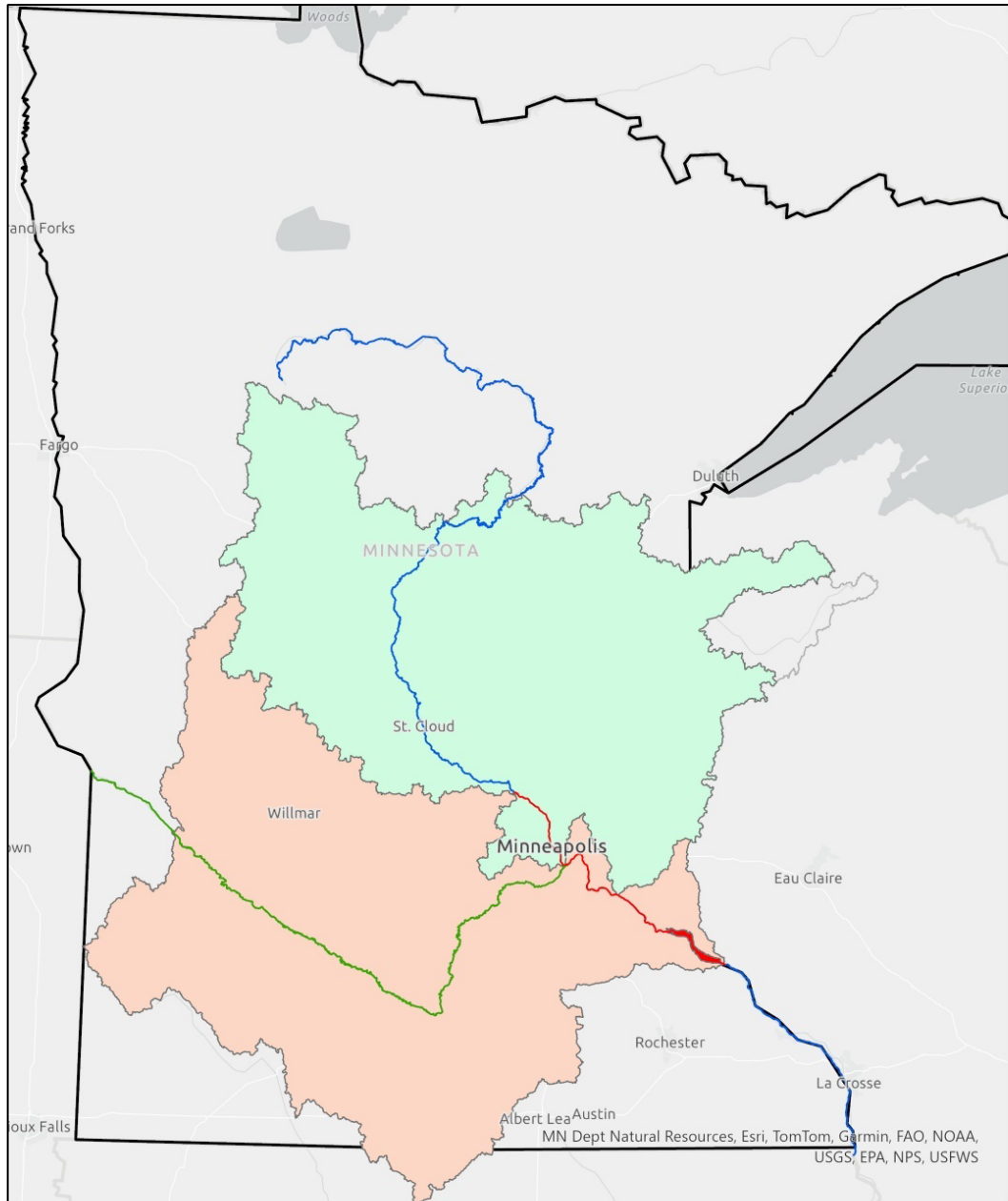


Figure 2. Map showing which drainage requires reductions and which does not for the South Metro Mississippi TSS TMDL.

### South Metro Mississippi TSS TMDL Drainage Area



**TABLES**

**Original Table 7 Excerpt (Totals by State): Annual allocations of TSS for average flow conditions of the South Metro Mississippi (pg. 54 of TMDL report).**

Category	State Totals		Grand Total
	MN	WI	
Metric tons/year			
<b>Stormwater* (Construction/ Industrial)</b>	1,189	34	1,223
<b>Stormwater (MS4s)**</b>	53,111	568	53,678
<b>Wastewater Treatment Plants</b>	41,477	841	42,318
<b>Natural Background</b>	74,677	1,884	76,561
<b>LA</b>	425,183	13,766	438,949
<b>Internal Load (for Total) †</b>			52,602
<b>Wastewater Reserve Capacity††</b>	47	41	88
<b>Total Loading Capacity</b>	595,684	17,134	612,818

\* The MPCA and WIDNR manage industrial and construction stormwater on a statewide basis via general permits.

\*\* Includes natural background.

† Internal loading is a subset of the total LA; see section 6.2.

†† Use of wastewater reserve capacity is described in section 6.5.

**Modified Table 7 Excerpt (Totals by State): Annual allocations of TSS for average flow conditions of the South Metro Mississippi (modifications highlighted in yellow).**

Category	State Totals		Grand Total
	MN	WI	
Metric tons/year			
<b>Stormwater* (Construction/ Industrial)</b>	1,189	34	1,223
<b>Stormwater (MS4s)**</b>	54,872	568	55,440
<b>Wastewater Treatment Plants</b>	41,477	841	42,318
<b>Natural Background</b>	74,677	1,884	76,561
<b>LA</b>	423,422	13,766	437,188
<b>Wastewater Reserve Capacity††</b>	47	41	88
<b>Total Loading Capacity</b>	595,684	17,134	612,818

\* The MPCA and WIDNR manage industrial and construction stormwater on a statewide basis via general permits.

\*\* Includes natural background.

† Internal loading is a subset of the total LA; see Section 6.2.

†† Use of wastewater reserve capacity is described in Section 6.5.

*Some small arithmetic errors may exist due to rounding.*

Original Table 8 Excerpt (Totals by State): Annual allocations of TSS for a range of flow conditions of the South Metro Mississippi (Page 56 of TMDL report).

Category	Flow condition	State Totals		Grand Total
		MN	WI	
Metric tons/year				
<b>Stormwater* (Industrial/ Construction)</b>	Very high	1,929	55	1,985
	High	1,504	43	1,547
	Moderate	1,189	34	1,223
	Low	914	26	940
	Very low	630	18	648
<b>Stormwater (MS4s)**</b>	Very high	86,177	921	87,098
	High	67,167	718	67,884
	Moderate	53,111	568	53,678
	Low	40,831	436	41,267
	Very low	28,147	301	28,448
<b>Wastewater Treatment Plants</b>	Very high	41,477	841	42,318
	High	41,477	841	42,318
	Moderate	41,477	841	42,318
	Low	41,477	841	42,318
	Very low	41,477	841	42,318
<b>Natural Background</b>	Very high	134,838	3,401	138,239
	High	88,798	2,240	91,037
	Moderate	74,677	1,884	76,561
	Low	53,255	1,343	54,599
	Very low	25,726	649	26,375
<b>LA†</b>	Very high	640,761	16,714	657,475
	High	426,503	16,509	443,012
	Moderate			438,949
	<i>Internal load (for Total)</i>	425,183	13,766	52,602
	Low	300,961	9,731	310,692
	Very low	196,538	6,568	203,105
<b>Wastewater Reserve Capacity††</b>	Very high	47	41	88
	High	47	41	88
	Moderate	47	41	88
	Low	47	41	88
	Very low	47	41	88

<b>Total Loading Capacity</b>	Very high	905,230	21,974	927,204
	High	625,495	20,392	645,887
	Moderate	595,684	17,134	612,818
	Low	437,485	12,420	449,905
	Very low	292,565	8,418	300,983

\* The MPCA and WDNR manage industrial and construction stormwater on a statewide basis via general permits.

\*\* Includes natural background.

† Internal loading is a subset of the total LA; see Section 6.2.

†† Use of wastewater reserve capacity is described in Section 6.5.

**Modified Table 8 Excerpt (Totals by State): Annual allocations of TSS for a range of flow conditions of the South Metro Mississippi (modifications highlighted in yellow).**

Category	Flow condition	State Totals		Grand Total
		MN	WI	
Metric tons/year				
<b>Stormwater* (Industrial/ Construction)</b>	Very high	1,929	55	1,985
	High	1,504	43	1,547
	Moderate	1,189	34	1,223
	Low	914	26	940
	Very low	630	18	648
<b>Stormwater (MS4s)**</b>	Very high	89,034	921	89,955
	High	69,393	718	70,111
	Moderate	54,872	568	55,440
	Low	42,184	436	42,620
	Very low	29,080	301	29,381
<b>Wastewater Treatment Plants</b>	Very high	41,477	841	42,318
	High	41,477	841	42,318
	Moderate	41,477	841	42,318
	Low	41,477	841	42,318
	Very low	41,477	841	42,318
<b>Natural Background</b>	Very high	134,838	3,401	138,239
	High	88,798	2,240	91,037
	Moderate	74,677	1,884	76,561
	Low	53,255	1,343	54,599
	Very low	25,726	649	26,375
<b>LA†</b>	Very high	637,904	16,714	654,618
	High	424,277	16,509	440,786
	Moderate	423,422	13,766	437,188
	Low	299,608	9,731	309,339

	Very low	195,605	6,568	202,173
--	----------	---------	-------	---------

<b>Wastewater Reserve Capacity<sup>††</sup></b>	Very high	47	41	88
	High	47	41	88
	Moderate	47	41	88
	Low	47	41	88
	Very low	47	41	88

<b>Total Loading Capacity</b>	Very high	905,230	21,974	927,204
	High	625,495	20,392	645,887
	Moderate	595,684	17,134	612,818
	Low	437,485	12,420	449,905
	Very low	292,565	8,418	300,983

\* The MPCA and WDNR manage industrial and construction stormwater on a statewide basis via general permits.

\*\* Includes natural background.

† Internal loading is a subset of the total LA; see Section 6.2.

†† Use of wastewater reserve capacity is described in Section 6.5.

*Some small arithmetic errors may exist due to rounding.*

**Original Table 9 Excerpt (Totals by State): Daily allocations of TSS for a range of flow conditions of the South Metro Mississippi (Page 57 of TMDL report).**

Category	Flow condition	State Totals		Grand Total
		MN	WI	
Kilograms/day				
<b>Stormwater* (Industrial/ Construction)</b>	Very high	5,286	152	5,438
	High	4,120	118	4,238
	Moderate	3,258	94	3,351
	Low	2,504	72	2,576
	Very low	1,726	50	1,776
<b>Stormwater (MS4s)**</b>	Very high	236,102	2,523	238,625
	High	184,018	1,967	185,985
	Moderate	145,509	1,555	147,064
	Low	111,866	1,195	113,061
	Very low	77,115	824	77,939
<b>Wastewater Treatment Plants</b>	Very high	164,195	3,241	167,436
	High	164,195	3,241	167,436
	Moderate	164,195	3,241	167,436
	Low	164,195	3,241	167,436
	Very low	164,195	3,241	167,436
<b>Natural Background</b>	Very high	369,419	9,318	378,737
	High	243,281	6,136	249,417

	Moderate	204,596	5,160	209,756
	Low	145,905	3,680	149,585
	Very low	70,481	1,778	72,259
<b>LA†</b>	Very high	1,755,510	45,793	1,801,303
	High	1,168,501	45,230	1,213,731
	Moderate			1,202,600
	<i>Internal load (for Total)</i>	1,164,885	37,715	144,114
	Low	824,550	26,660	851,210
	Very low	538,459	17,993	556,453
<b>Wastewater Reserve Capacity††</b>	Very high	775	159	934
	High	775	159	934
	Moderate	775	159	934
	Low	775	159	934
	Very low	775	159	934
<b>Total Loading Capacity</b>	Very high	2,531,287	61,185	2,592,473
	High	1,764,890	56,851	1,821,741
	Moderate	1,683,217	47,925	1,731,141
	Low	1,249,795	35,008	1,284,803
	Very low	852,752	24,045	876,797

\* The MPCA and WIDNR manage industrial and construction stormwater on a statewide basis via general permits.

\*\* Includes natural background.

† Internal loading is a subset of the total LA; see Section 6.2.

†† Use of wastewater reserve capacity is described in Section 6.5.

**Modified Table 9 Excerpt (Totals by State): Daily allocations of TSS for a range of flow conditions of the South Metro Mississippi (modifications highlighted in yellow).**

Category	Flow condition	State Totals		Grand Total
		MN	WI	
Kilograms/day				
<b>Stormwater* (Industrial/ Construction)</b>	Very high	5,286	152	5,438
	High	4,120	118	4,238
	Moderate	3,258	94	3,351
	Low	2,504	72	2,576
	Very low	1,726	50	1,776
<b>Stormwater (MS4s)**</b>	Very high	243,929	2,523	246,452
	High	190,117	1,967	192,084
	Moderate	150,334	1,555	151,889
	Low	115,572	1,195	116,767
	Very low	79,672	824	80,496

<b>Wastewater Treatment Plants</b>	Very high	164,195	3,241	167,436
	High	164,195	3,241	167,436
	Moderate	164,195	3,241	167,436
	Low	164,195	3,241	167,436
	Very low	164,195	3,241	167,436
<b>Natural Background</b>	Very high	369,419	9,318	378,737
	High	243,281	6,136	249,417
	Moderate	204,596	5,160	209,756
	Low	145,905	3,680	149,585
	Very low	70,481	1,778	72,259
<b>LA†</b>	Very high	1,747,683	45,793	1,793,476
	High	1,162,402	45,230	1,207,632
	Moderate	1,160,060	37,715	1,197,775
	Low	820,844	26,660	847,504
	Very low	535,902	17,993	553,895
<b>Wastewater Reserve Capacity††</b>	Very high	775	159	934
	High	775	159	934
	Moderate	775	159	934
	Low	775	159	934
	Very low	775	159	934
<b>Total Loading Capacity</b>	Very high	2,531,287	61,185	2,592,473
	High	1,764,890	56,851	1,821,741
	Moderate	1,683,217	47,925	1,731,141
	Low	1,249,795	35,008	1,284,803
	Very low	852,752	24,045	876,797

\* The MPCA and WIDNR manage industrial and construction stormwater on a statewide basis via general permits.

\*\* Includes natural background.

† Internal loading is a subset of the total LA; see Section 6.2.

†† Use of wastewater reserve capacity is described in Section 6.5.

*Some small arithmetic errors may exist due to rounding.*

### Reasonable Assurance

The MPCA is responsible for applying federal and state regulations to protect and enhance water quality in Minnesota. The MPCA oversees stormwater management accounting activities for all permitted MS4 entities listed in this TMDL modification. The MS4 General Permit requires regulated municipalities to implement best management practices (BMPs) that reduce pollutants in stormwater to the maximum extent practicable. A critical component of permit compliance is the requirement for the owners or operators of a permitted MS4 conveyance to develop a SWPPP. The SWPPP addresses all permit requirements, including the following six measures:

- Public education and outreach
- Public participation
- Illicit discharge detection and elimination program
- Construction site runoff controls
- Post-construction runoff controls
- Pollution prevention and municipal good housekeeping measures

A SWPPP is a management plan that describes the MS4 permittee’s activities for managing stormwater within their regulated area. The TMDL report and this modification assign WLAs to permitted MS4s in the study area. The MS4 permit requires applicants to submit information at the time of application on applicable WLAs. They must document how they will make progress on performance-based WLAs (bacteria, chloride, temperature), demonstrate they are currently meeting their numerical WLAs (oxygen demand, nitrate, total phosphorus [TP], or TSS), or develop a compliance schedule for those numerical WLAs that are not being met. A compliance schedule includes BMPs that will be implemented over the permit term, a timeline for their implementation, and a long-term strategy for continuing progress towards assigned WLAs. The MPCA requires MS4 owners or operators to submit their application and corresponding SWPPP document to the MPCA for review. Once the application and SWPPP are deemed complete by the MPCA, all application materials are placed on 30-day public notice, allowing the public an opportunity to review and comment on the prospective program.

Progress on BMP implementation must be reported annually. For WLAs being met at the time of permit application, the same level of treatment must be maintained in the future. Regardless of WLA attainment, all permitted MS4s are still required to reduce pollutant loadings to the maximum extent practicable.

The MPCA’s stormwater program and its National Pollutant Discharge Elimination System (NPDES)/State Disposal System (SDS) permit program are regulatory activities providing reasonable assurance that implementation activities are initiated, maintained, and consistent with WLAs assigned in this study.

Several nonpermitted reduction programs exist to support implementation of nonpoint source reduction BMPs statewide. Per the spending for water quality implementation projects website (data compiled by MPCA: [Spending for water quality implementation projects](#)), approximately 3 billion dollars in state and federal grants, loans, local government and landowner cost share match have been spent on nonpoint source projects since 2004 in the 26 watersheds contributing to the South Metro Mississippi drainage. Efforts to reduce nonpoint source pollution loading will continue.

### **Implementation**

The TMDL report and this modification assign applicable WLAs to current and new MS4s. Permittees should reference Table 1 and Figure 2 to determine if they are required to make reductions. From Section 6.1.2 of the TMDL report: “MS4s in Minnesota within the St. Croix River Basin or above Lock and Dam 1 (except for the Crow River Watershed) require no reduction for this TMDL. Other MS4s can evaluate compliance status for the South Metro Mississippi River TSS TMDL via monitoring, modeling or other means approved by MPCA Stormwater Program staff, with a target average loading of

154 lbs/acre/yr for their MS4-regulated area.” MS4 permittees identified in Table 1 as partially below Lock and Dam 1 or partially within the Crow River Watershed are assumed to require reductions for this TMDL unless evidence is provided that they do not discharge to those drainages.

When evaluating TSS WLA attainment during permit application, permittees should evaluate the areas draining to stormwater conveyance within the impairment subwatershed classified as developed land covers (2021 NCLD). Any wasteload reducing BMPs implemented since the baseline year of 2001 in those areas can be counted toward WLA attainment. See [Making WLA determinations | Minnesota Stormwater Manual](#).

Prior to implementation, permitted MS4s are encouraged to compare their sewersheds (e.g., catchments, pipesheds, etc.) with the drainage areas for each impaired water body to ensure appropriate BMP crediting. If a permitted MS4 sewershed is different from what is defined as the drainage area in this report, the sewershed should be considered part of the MS4 contribution to the impaired water if sufficient evidence of the appropriate sewershed area is provided to the MPCA. With Agency approval, any wasteload-reducing BMP implemented since the TMDL baseline year within the sewershed of the impaired water body will be creditable towards an MS4’s load reduction for purposes of annual reporting and demonstrating progress towards meeting the WLA(s).

Projects undertaken recently may take a few years to influence water quality. Any wasteload-reducing BMP implemented after the baseline year of 2001 will be creditable toward the MS4’s load reductions. If a BMP was implemented during or just prior to the baseline year, the MPCA is open to presentation of evidence by the MS4 permit holder to demonstrate that it should be considered as a credit.