

2019 Modification to Bluff Creek Watershed Total Maximum Daily Load Report

OVERVIEW

TMDL Project Name	Bluff Creek Watershed TMDL: Turbidity and Fish Bioassessment Impairments
Date of EPA TMDL Approval	June 28, 2013
EPA Modification Approval Date	June 14, 2019
TMDL segment AUID and pollutant which require modification	07020012-710 – Total Suspended Solids TMDL modification
TMDL Tables in final TMDL document which are being modified	Table A.1 Total Suspended Solids Loading Capacities and Allocations using 30 mg/L TSS Standard (AUID: 07020012-710)

What is being changed from the final TMDL to the modified TMDL?

The Minnesota Pollution Control Agency (MPCA) is making adjustments to stormwater wasteload allocations (WLAs) to shift a portion of Minnesota Department of Transportation’s (MnDOT’s) Municipal Separate Storm Sewer Systems (MS4) WLA (Permit #MS400170) to Carver County’s MS4 WLA (Permit # MS400070) and Chanhassen City’s MS4 WLA (Permit #MS400079) (Table 1). All three MS4s have existing WLAs in the approved TMDL for Bluff Creek (AUID: 07020012-710). The MnDOT has transferred ownership of portions of the right-of-way (ROW) to Carver County and the city of Chanhassen (Figure 1). The adjustments will not change the approved overall total loading capacities of the TMDL.

Table 1. Current regulated MS4s within the TMDL subwatershed.

AUID	Reach Name	Current MS4s included in TMDL	MS4 Permit Number	Impairment	Adjustment to MS4 WLA
07020012-710	Bluff Creek	MnDOT MS4	MS400170	Total Suspended Solids (TSS)	Yes
		Carver County MS4	MS400070		Yes
		Chanhassen City MS4	MS400079		Yes
		Chaska City MS4	MS400080		No

Explanation of modifications:

Ownership of portions of MnDOT’s ROW have been transferred to Carver County and Chanhassen City. The MPCA is proposing the following modifications:

Bluff Creek, AUID 07020012-710: The MPCA is shifting 0.002 and 0.047 tons/day of total suspended solids (TSS) depending on flow from MnDOT’s WLA to Carver County’s WLA and 0.0003 to 0.0019 tons/day of TSS depending on flow from MnDOT’s WLA to Chanhassen City’s WLA (See Modified Table A.1).

Maps

**MnDOT Right of Way and Turnbacked Areas
Bluff Creek**

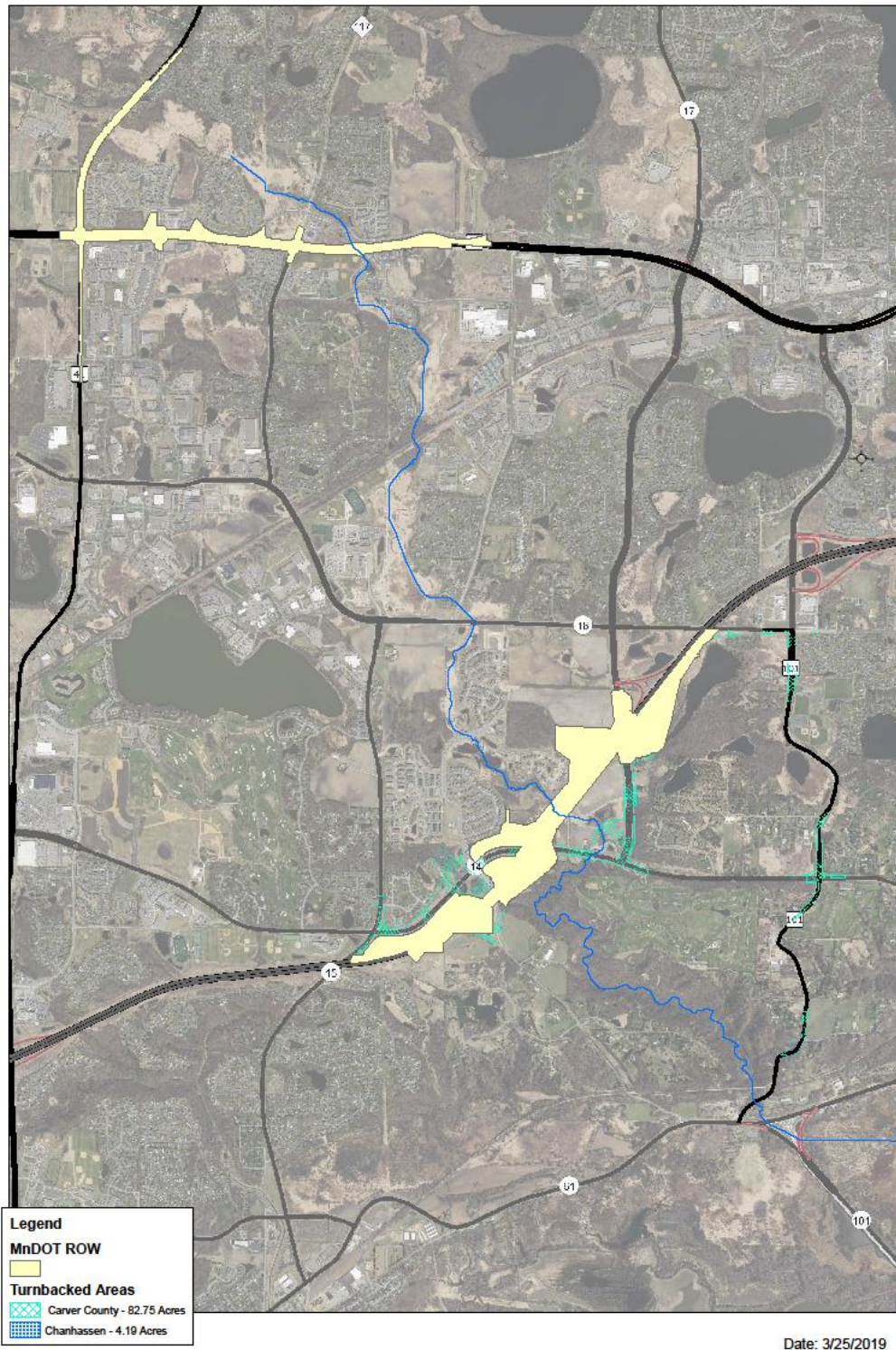


Figure 1. MnDOT right of way and turn-back areas in the Bluff Creek Watershed.

Tables

Original Table A.1. Total Suspended Solids Loading Capacities and Allocations using 30 mg/L TSS Standard (AUID: 07020012-710) (pg. A-2 of TMDL report)

	Flow Zone				
	High	Moist	Mid	Dry	Low
	Tons/day				
TOTAL DAILY LOADING CAPACITY	2.14	0.38	0.21	0.12	0.03
Wasteload Allocation					
Communities Subject to MS4 NPDES					
Mn/DOT MS4 NPDES	0.18	0.03	0.02	0.01	0.002
Carver County MS4 NPDES	0.03	0.01	0.003	0.002	<0.001
Chaska MS4 NPDES	0.07	0.01	0.01	0.004	0.001
Chanhassen MS4 NPDES	0.73	0.13	0.07	0.04	0.01
Construction Stormwater	0.001	<0.001	<0.001	<0.001	<0.001
Industrial Stormwater	0.001	<0.001	<0.001	<0.001	<0.001
Load Allocation	0.91	0.16	0.09	0.05	0.01
Margin of Safety	0.21	0.04	0.02	0.01	0.00
	<i>Percent of total daily loading capacity</i>				
TOTAL DAILY LOADING CAPACITY	100%	100%	100%	100%	100%
Wasteload Allocation					
Communities Subject to MS4 NPDES					
Mn/DOT MS4 NPDES	8.3%	8.3%	8.3%	8.3%	8.3%
Carver County MS4 NPDES	1.6%	1.6%	1.6%	1.6%	1.6%
Chaska MS4 NPDES	3.3%	3.3%	3.3%	3.3%	3.3%
Chanhassen MS4 NPDES	34.1%	34.1%	34.1%	34.1%	34.1%
Construction Stormwater	0.05%	0.05%	0.05%	0.05%	0.05%
Industrial Stormwater	0.05%	0.05%	0.05%	0.05%	0.05%
Load Allocation	42.6%	23.6%	23.6%	23.6%	23.6%
Margin of Safety	10%	10%	10%	10%	10%

Modified Table A.1 Total Suspended Solids Loading Capacities and Allocations using 30 mg/L TSS Standard (AUID: 07020012-710) (modifications highlighted in yellow)

	Flow Zone				
	High	Moist	Mid	Dry	Low
	Tons/day				
TOTAL DAILY LOADING CAPACITY	2.14	0.38	0.21	0.12	0.03
Wasteload Allocation					
Communities Subject to MS4 NPDES					
Mn/DOT MS4 NPDES	0.13	0.02	0.01	0.007	0.002
Carver County MS4 NPDES	0.08	0.01	0.008	0.004	0.001
Chaska MS4 NPDES	0.07	0.01	0.01	0.004	0.001
Chanhassen MS4 NPDES	0.73	0.13	0.07	0.04	0.01
Construction Stormwater	0.001	<0.001	<0.001	<0.001	<0.001
Industrial Stormwater	0.001	<0.001	<0.001	<0.001	<0.001
Load Allocation	0.91	0.16	0.09	0.05	0.01
Margin of Safety	0.21	0.04	0.02	0.01	0.00
	<i>Percent of total daily loading capacity</i>				
TOTAL DAILY LOADING CAPACITY	100%	100%	100%	100%	100%
Wasteload Allocation					
Communities Subject to MS4 NPDES					
Mn/DOT MS4 NPDES	6.2%	6.2%	6.2%	6.2%	6.2%
Carver County MS4 NPDES	3.6%	3.6%	3.6%	3.6%	3.6%
Chaska MS4 NPDES	3.3%	3.3%	3.3%	3.3%	3.3%
Chanhassen MS4 NPDES	34.2%	34.2%	34.2%	34.2%	34.2%
Construction Stormwater	0.05%	0.05%	0.05%	0.05%	0.05%
Industrial Stormwater	0.05%	0.05%	0.05%	0.05%	0.05%
Load Allocation	42.6%	23.6%	23.6%	23.6%	23.6%
Margin of Safety	10.0%	10%	10%	10%	10%

Note: Chanhassen appears to have no changes resulting from the MnDOT turnbacks, but Chanhassen's load and area are relatively large (about one third of the total), which simply masks the small changes.

Implementation

Given the modification described, are there any changes to the Stormwater Pollution Prevention Plan (SWPPP) to account for the modified WLAs?

Carver County MS4, Chanhassen City MS4, and MnDOT MS4 will be required to submit an updated SWPPP when the new MS4 permit becomes effective in late 2019. At that time, Carver County MS4, Chanhassen City MS4, and MnDOT MS4 will be required to account for the adjusted TSS WLA for Bluff Creek.

Will the SWPPPs be updated to include the new information included in the modification? If yes, when will the SWPPPs be updated?

The SWPPPs will be updated to include the new information in the modification when the new permit becomes effective in late 2019.

Have the permittee been notified of this proposed change?

We will notify the affected permittees of the proposed change and the permittees will have the opportunity to review and comment on the modifications after EPA's review.