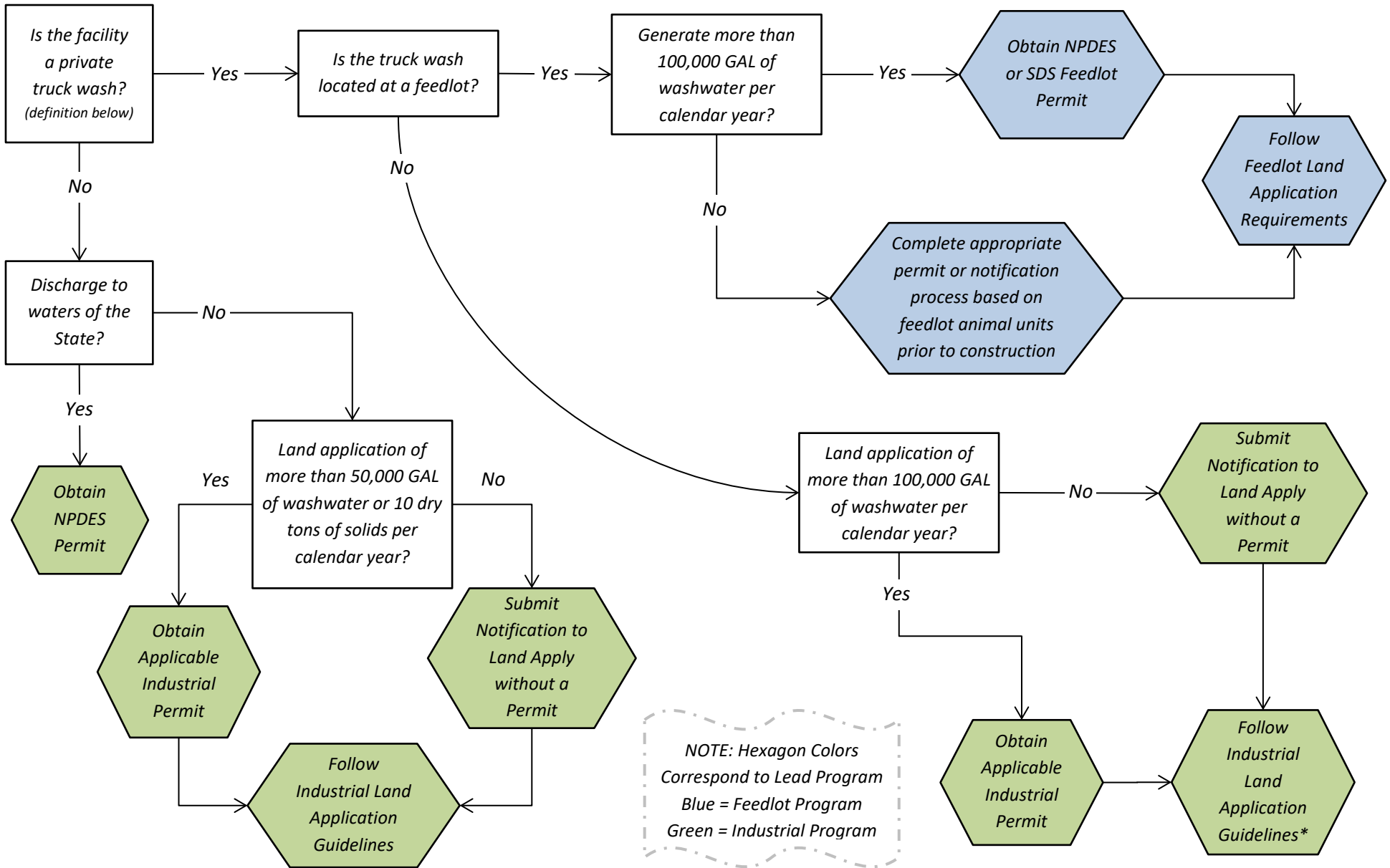


Permitting of Livestock Truck Wash Facilities (Decision Tree – 5/18/20)



NOTE: Hexagon Colors Correspond to Lead Program
 Blue = Feedlot Program
 Green = Industrial Program

“Private truck wash” means a truck washing facility owned/leased, operated, and used only by a feedlot operator to wash trucks owned/leased by the feedlot operator and used to transport animals or supplies to and from the feedlot(s) they own.

*A Type IV operator is not required provided the washwater is applied by the feedlot operator to land owned/operated by the feedlot owner or is applied by a licensed commercial animal waste technician (CAWT).