

**Clean Water Council
Budget and Outcomes Committee (BOC) Meeting Agenda
Friday, March 7, 2025 9:30 a.m. to 12:00 p.m.**

Hybrid Meeting: In person at 520 Lafayette Road, St. Paul, MN 55155 & on Webex

2023 BOC Members: Steve Besser (BOC Chair), Dick Brainerd (BOC Vice-Chair), Steve Christensen, Warren Formo, Brad Gausman, Holly Hatlewick, Annie Knight, Fran Miron

9:30 Regular Business

- Introductions
- Approve agenda & most recent minutes
- Chair and Staff update

9:45 Budget Forecast from Thursday

10:45 BREAK

11:00 Continued Ideas for More Formalized Input to Interagency Coordination Team in 2025

11:15 Upper Mississippi Protection/Restoration Goal Update

11:45 Public Comment

12:00 Adjourn and Lunch

Clean Water Council Strat Plan KPI Dashboard



Surface Water

MEASURE	STATUS	TREND
Rate of impairment/unimpairment of surface water statewide and by watershed: Stream aquatic life.	▲	NEI
Rate of impairment/unimpairment of surface water statewide and by watershed: Stream swimming	▲	NEI
Rate of impairment/unimpairment of surface water statewide and by watershed: Lake swimming	▲	NEI

Groundwater

Changes over time in source water quality used for community water supplies.	●	↶
Nitrate concentrations in newly constructed wells.	▲	➡
Arsenic concentrations in newly constructed wells.	▲	➡
Changes over time in groundwater levels.	▲	↶



Drinking Water

MEASURE	STATUS	TREND
Changes over time in pesticides, nitrate-nitrogen, and other key water quality parameters in groundwater: Pesticides.	▲	➡
Changes over time in pesticides, nitrate-nitrogen, and other key water quality parameters in groundwater: Nitrate-nitrogen statewide.	▲	NEI

People Act to Protect Water

MEASURE	STATUS	TREND
Social Measure- Building local capacity to support and engage in water restoration and protection.	▲	NEI
External drivers- Important land use, population, and climate trends.	▲	➡



Groundwater is clean and available to all in
Minnesota

Drinking water is safe for everyone,
everywhere in Minnesota

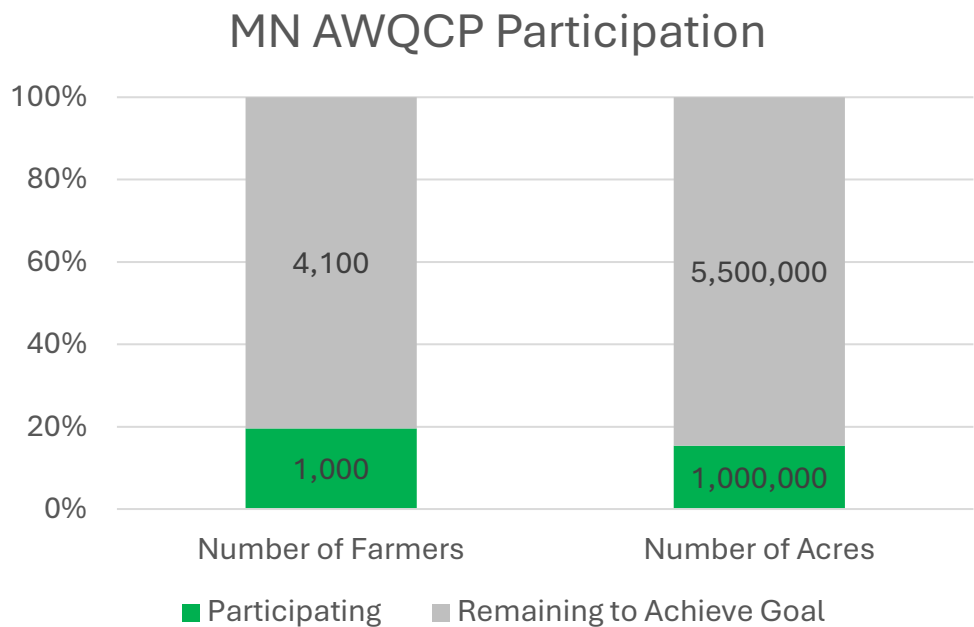
Minnesotans will have fishable and swimmable waters throughout the state

Options to Close \$6.826M Gap

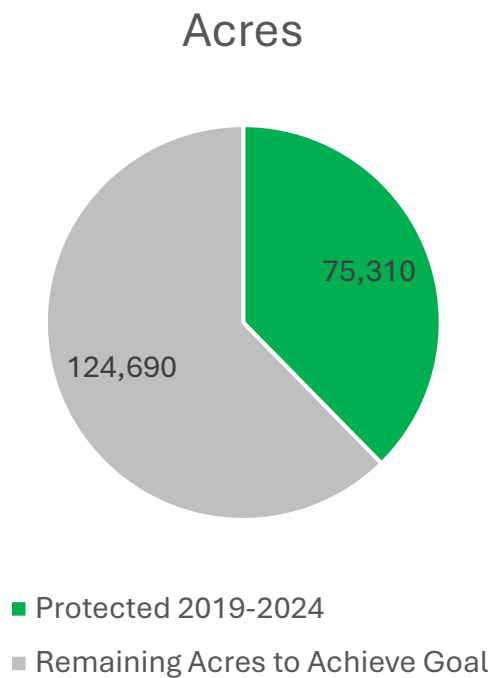
Leg Order	Program	Dec 2024 Rec	Potential Cut	Revised Rec
11	Expand MN Ag Weather Station Network	2,500	500	2,000
13	River & Lake Monitoring & Assessment	18,900	500	18,400
14	Watershed Restoration & Protection Strategies (incl TMDL)	14,500	500	14,000
35	Culvert Replacement Cost Share	3,000	500	2,500
36	WBIF	90,000	2,000	88,000
36	Accelerated Implementation	8,700	700	8,000
50	Enhancing Soil Health & Landowner Adoption of Cover Crops	11,852	1,852	10,000
55	WRAPS	7,790	790	7,000
62	County Geologic Atlas Part 8	800	500	300
63	Stormwater Research	2,000	400	1,600
	TOTALS		\$8,242	

All Minnesotans value water and take actions to sustain and protect it

Metric: Number of farmers and acres enrolled in Minnesota Agricultural Water Quality Certification Program, with a target of 5,100 farms and 6.5 million acres by 2030



Metric: Protection and restoration of 200,000 acres in the Upper Mississippi River headwaters basin during 2019-2034



Mission

Protect and restore Minnesota's waters for generations to come.

Goals and objectives



Drinking water is safe for everyone, everywhere in Minnesota

- Protect public water supplies
- Ensure private well users have safe water



Groundwater is clean and available

- Improve and protect groundwater quality
- Ensure sustainable long-term trends in aquifer levels
- Avoid adverse impacts to surface water features due to groundwater use



Surface waters are swimmable and fishable

- Prevent and reduce pollution of surface waters
- Maintain and improve the health of aquatic ecosystems
- Protect and restore hydrologic systems



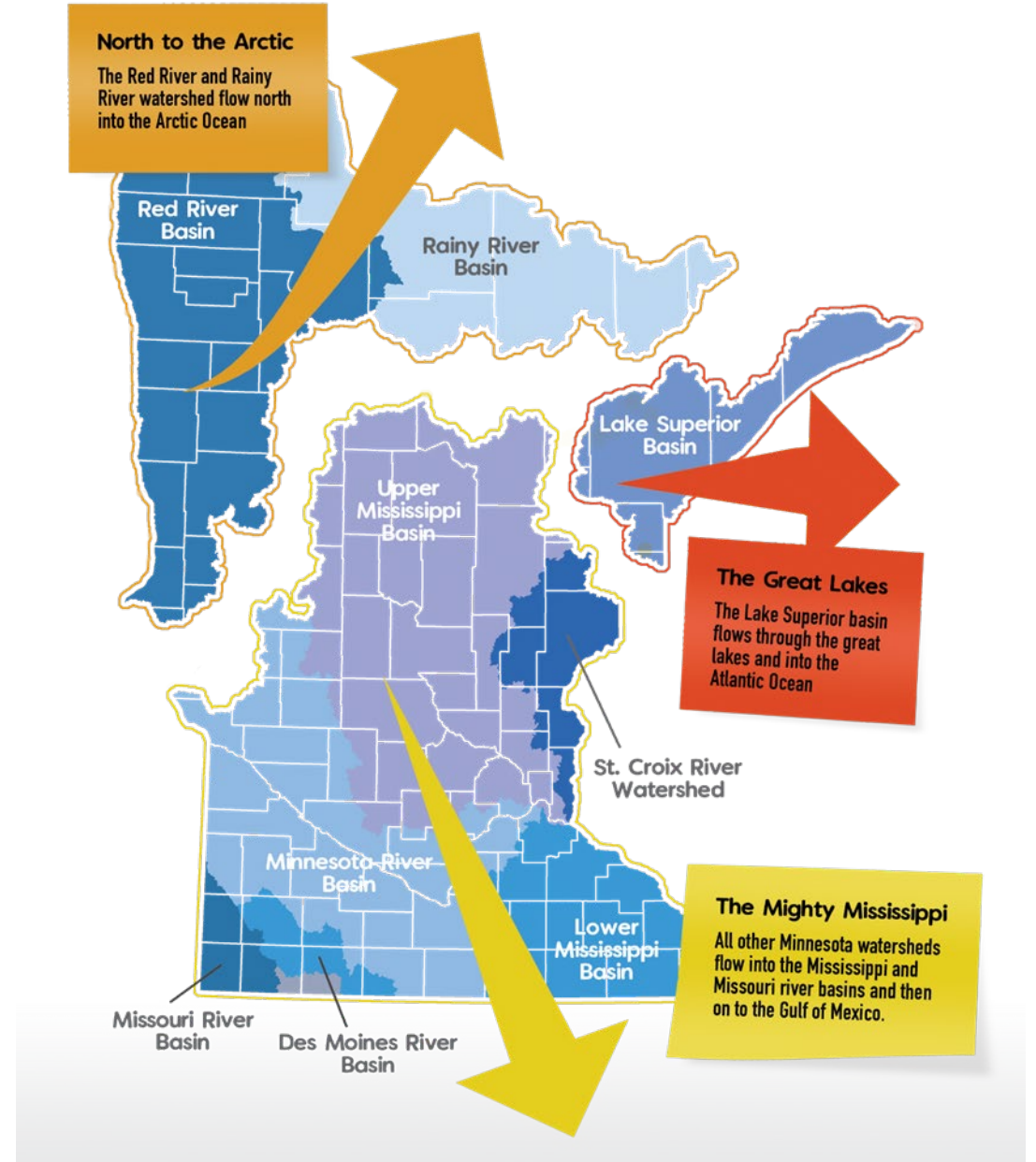
Minnesotans value water and take actions to sustain and protect it

- Build capacity of local communities to protect and sustain water resources
- Encourage systems and approaches that support, protect, and improve water
- Provide education and outreach to inform Minnesotans' water choices
- Encourage citizen and community engagement on water issues

Proposal to CWC for Upper Mississippi River headwaters basin Strat Plan Metric

AGENDA:

- Strat Plan Background & Measurement Challenges
- Geographic Scope
- Timing
- Funding Source(s)
- Protection vs. Restoration
- BOC Feedback



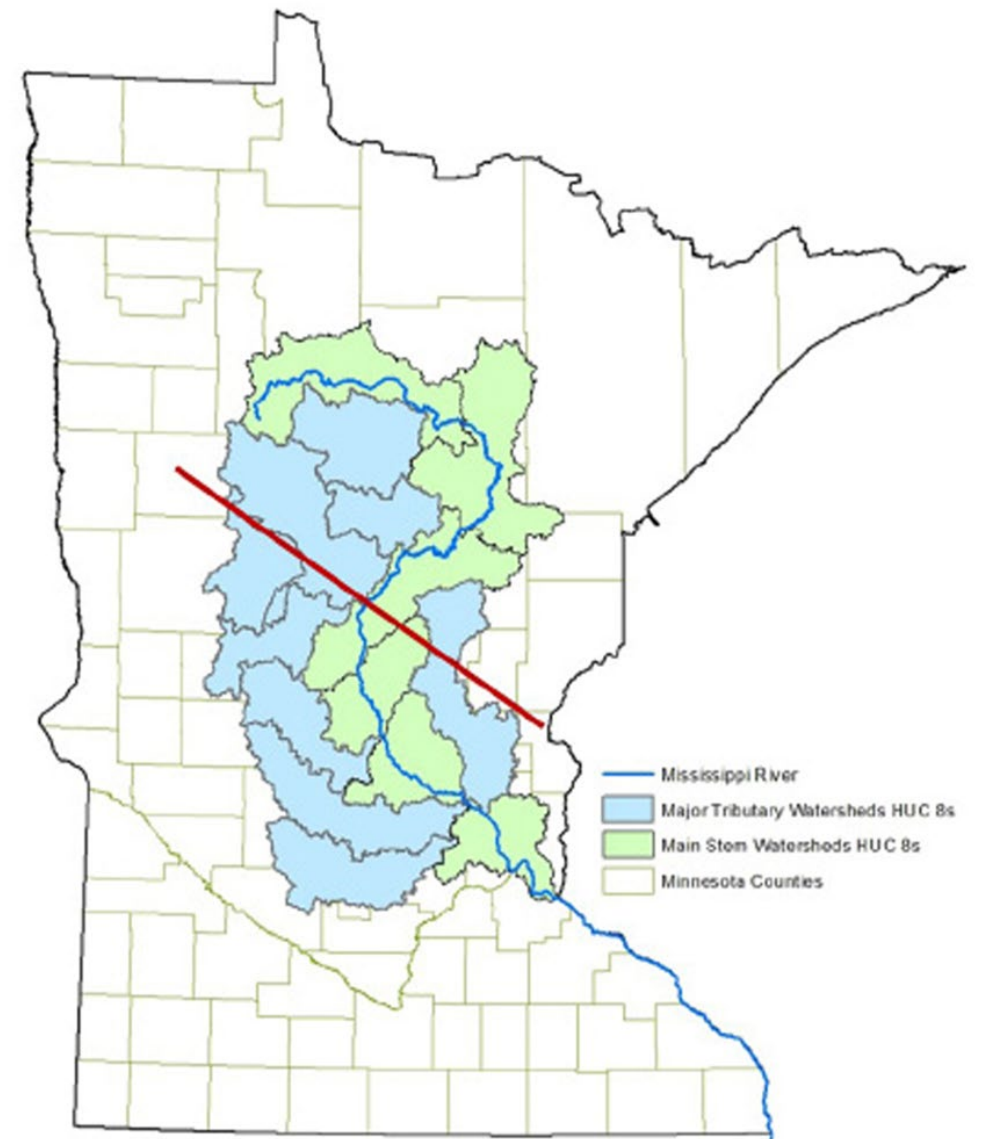
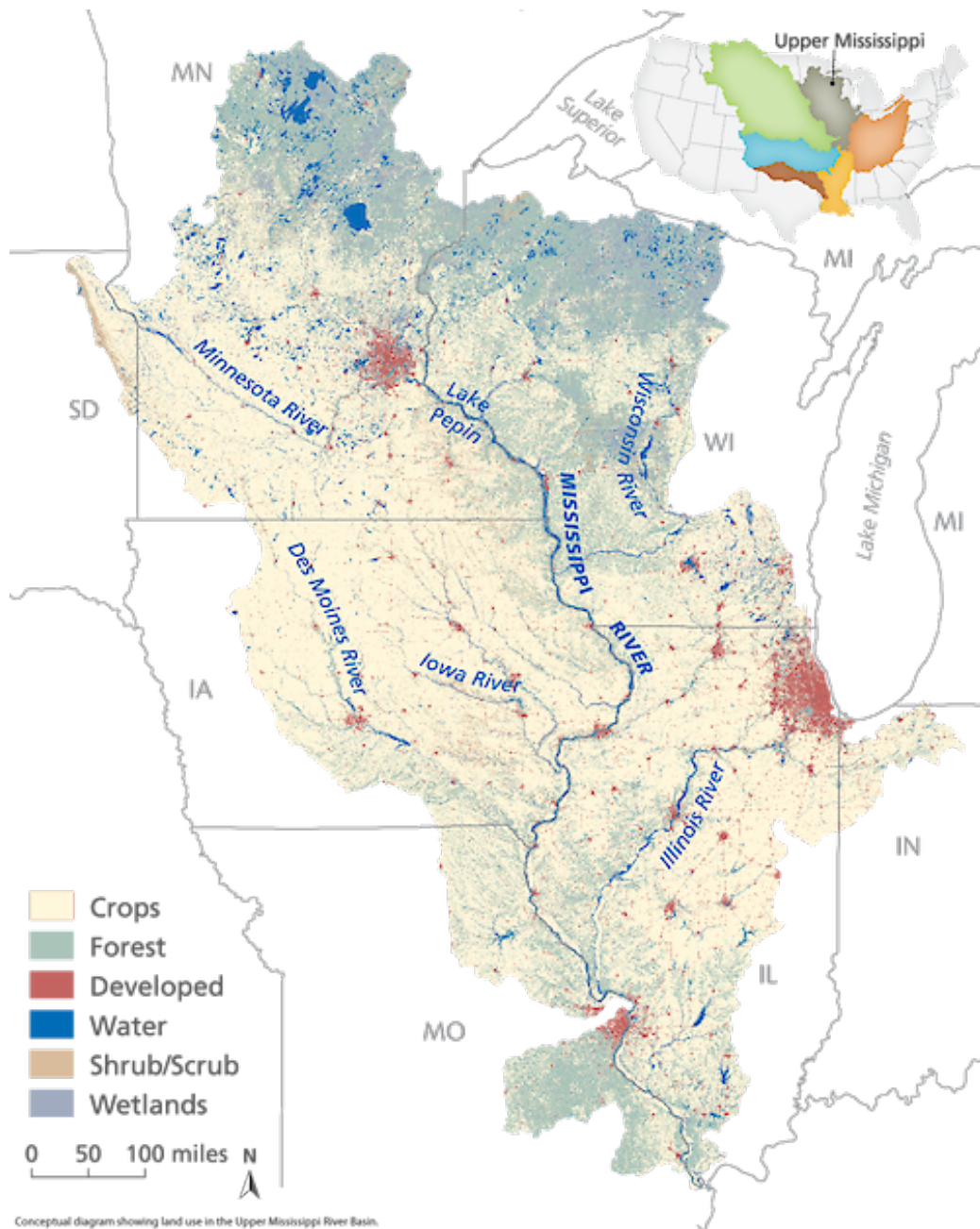
CWC Strat Plan – as updated in 2024

Relevant CWC Strat Plan text:

- Vision: All Minnesotans value water and take actions to sustain and protect it.
- Goal 1: Build capacity of local communities to protect and sustain water resources.
 - Action: Support local efforts to engage lakeshore property owners and private landowners
 - Measure: Protection of 100,000 acres and restoration of 100,000 acres in the Upper Mississippi River headwaters basin by 2034.

MEASUREMENT CHALLENGES – AND PROPOSED SOLUTIONS

- What is the geographic scope of the Upper Mississippi River headwaters basin? **HUC# 0701**
- When to begin measuring protection/restoration? **2018 as Baseline Year**
- Do we measure acres protected/restored by financial sources other than CWF? **YES**
- Do we measure protection & restoration separately? **NO** Can we combine these goals? **YES**
- **PROPOSED Measure: Protection and restoration of 200,000 ~~100,000~~ acres and restoration of ~~100,000~~ acres in the Upper Mississippi River headwaters basin during 2019-2034 by 2034.**

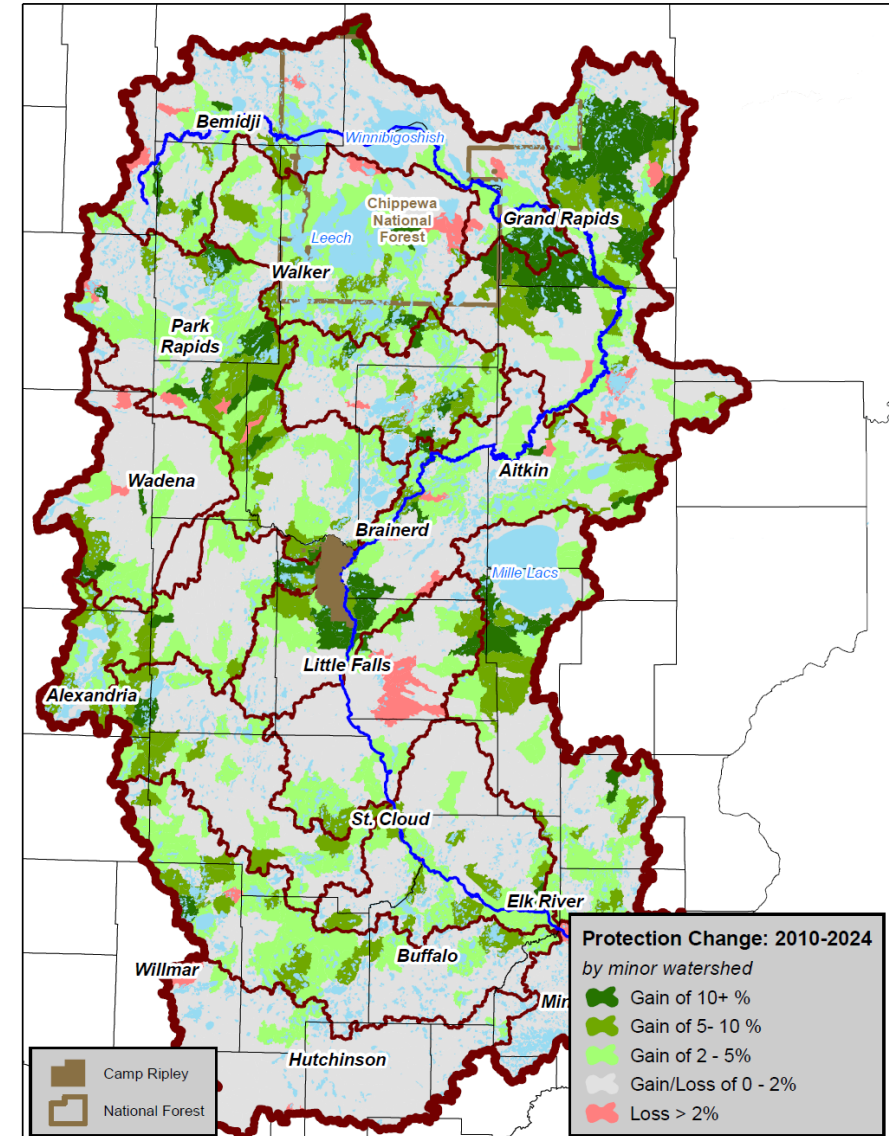
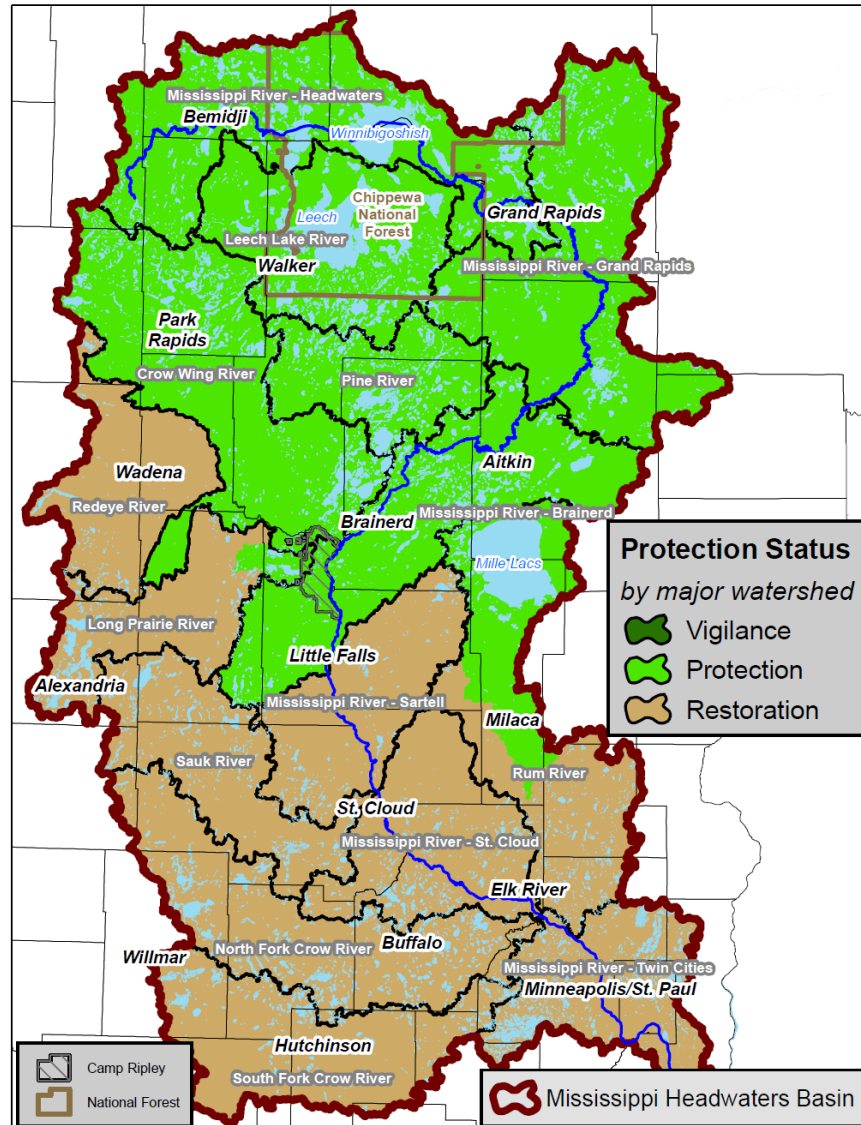


Upper Mississippi River Basin (HUC 4)

HUC# 0701

<https://www.pca.state.mn.us/sites/default/files/wq-ws4-38b.pdf>

Upper Mississippi River Headwaters Basin HUC# 0701



Upper Miss River Headwaters Basin HUC# 0701

Acres Protected – Overview

Years	Acres Protected &/or Restored	Average Acres Per Year Protected &/or Restored
2008-2018	290,151	29,015
2019-2024	75,310	7,531
Proposed Measure Timeframe Utilizes 2018 as Baseline Year	Protection and restoration of 200,000 acres in the Upper Mississippi River headwaters basin during 2019-2034	12,500 x 16 years = 200,000 acres

Upper Miss River Headwaters Basin HUC# 0701

Acres Protected – 2008-2018

Major Watershed	Acres	Protection 2008 (ac)	Protection 2018 (ac)	Protection Gain 2008-2018 (ac)
Leech Lake River	857,971	659,923	675,560	15,636
Mississippi River - Grand Rapids	1,332,798	908,738	996,893	88,155
Mississippi River - Headwaters	1,228,889	860,367	886,395	26,028
Pine River	500,887	314,110	323,125	9,015
Mississippi River - Brainerd	1,076,300	527,356	549,091	21,735
Crow Wing River	1,268,959	547,861	573,441	25,580
Rum River	1,013,794	438,030	461,142	23,112
Long Prairie River	565,078	172,766	185,031	12,266
Redeye River	572,069	169,548	177,609	8,061
North Fork Crow River	944,858	226,186	247,035	20,849
Mississippi River - St. Cloud	717,376	176,429	191,033	14,604
Mississippi River - Sartell	656,115	166,730	170,732	4,002
Mississippi River - Twin Cities	644,323	164,969	164,969	0
Sauk River	666,750	128,985	142,005	13,020
South Fork Crow River	818,103	110,051	118,139	8,088
<i>Totals</i>	<i>12,864,272</i>	<i>5,572,049</i>	<i>5,862,200</i>	<i>290,151</i>

Upper Miss River Headwaters Basin HUC# 0701

Acres Protected – 2019-2024

major wshd	acres	Protected_2018ac	Protected2024_ac	Increase_2018_2024ac
Mississippi River - Grand Rapids	1,332,798.4	996,893.4	1,002,257.8	5,364.4
Mississippi River - Headwaters	1,228,889.4	886,394.7	890,829.2	4,434.5
Leech Lake River	857,971.5	675,559.8	681,178.4	5,618.6
Crow Wing River	1,268,959.2	573,440.9	591,442.6	18,001.8
Mississippi River - Brainerd	1,076,299.8	549,091.2	562,407.9	13,316.7
Rum River	1,013,794.2	461,141.9	465,884.3	4,742.3
Pine River	500,887.1	323,125.5	328,699.1	5,573.7
North Fork Crow River	944,858.2	247,034.6	252,446.1	5,411.5
Long Prairie River	565,078.1	185,031.3	191,604.1	6,572.7
Mississippi River - St. Cloud	717,376.5	191,032.7	190,956.5	-76.2
Redeye River	572,068.9	177,609.0	179,037.3	1,428.4
Mississippi River - Sartell	656,115.2	170,732.0	174,062.8	3,330.8
Mississippi River - Twin Cities	644,322.9	169,677.3	164,968.8	-4,708.5
Sauk River	666,749.9	142,005.2	145,455.7	3,450.5
South Fork Crow River	818,102.8	118,138.7	120,987.9	2,849.2
<i>Totals</i>	<i>12,864,271.9</i>	<i>5,866,908.2</i>	<i>5,942,218.5</i>	<i>75,310.3</i>

Do we measure
acres protected
&/or restored by
financial sources
other than CWF?

Table 9. Protection Projects in North-central Minnesota by Year and Funding Amount

Project	# of Phases	Primary Geography	Protection Type	Project Start Year	Funding Source(s)	Total Funding Amount
Camp Ripley Sentinel Landscape ACUB Habitat Protection Program	12	Camp Ripley & vicinity	Easements	2010	OHF	\$23.2 Million
Camp Ripley ACUB Protection	2 cooperative agreements	Camp Ripley & vicinity	Easements	2006	DOD/NGB	\$47 Million
Wild Rice	8	10+ counties	Easements	2012	OHF	\$10.5 Million
Mississippi Headwaters Habitat Corridor Project	7	First 400 miles of Miss. R. (incl. headwaters lakes & tributaries)	Easements, Acquisition	2016	OHF, CWF	\$25.7 Million
Clean Water Critical Habitat (Northern Waters Land Trust, MLT)	10	Cass, Hubbard, Crow Wing, Aitkin	Easements, Acquisition	2014	OHF	\$27.8 Million
Lakes of Biological Significance (Northern Waters Land Trust, MLT)	3	Crow Wing, Cass, Hubbard, Wadena, Aitkin, Carlton, Itasca, Beltrami, Koochiching, St. Louis, Lake, Cook	Easements	2021	OHF	\$8.4 Million
RIM Critical Shorelands (multiple rivers)	4	Pine R, Crow Wing R, Rum R.	Easements	2016	CWF, TNC	\$11 Million
Protecting North-Central Minnesota Lakes	1	Camp Ripley, Aitkin & Crow Wing Co.	Easements, BMPs	2017	ENRTF	\$0.75 Million
Targeted RIM Easement & Acquisition to the Parcel	3	Pine R. & Leech Lake R. Watersheds	Easements, Acquisition	2020	OHF	\$6.6 Million

ACUB = Army Compatible Use Buffer, BMPs = Best Management Practices, CWF = Clean Water Fund (part of 2008 Legacy Amendment), DOD/NGB = United States Department of Defense/National Guard Bureau, ENRTF = Environment and Natural Resources Trust Fund, MHB = Mississippi Headwaters Board, MLT = Minnesota Land Trust, NRCS = United States Department of Agriculture, Natural Resources Conservation Service OHF = Outdoor Heritage Fund (part of 2008 Legacy Amendment), RIM = Reinvest in Minnesota, TNC = The Nature Conservancy

Do we measure protection & restoration separately?
Can we combine these protection & restoration metrics to simplify measurement?

Table 9. Protection Projects in North-central Minnesota by Year and Funding Amount

Project	# of Phases	Primary Geography	Protection Type	Project Start Year	Funding Source(s)	Total Funding Amount
Camp Ripley Sentinel Landscape ACUB Habitat Protection Program	12	Camp Ripley & vicinity	Easements	2010	OHF	\$23.2 Million
Camp Ripley ACUB Protection	2 cooperative agreements	Camp Ripley & vicinity	Easements	2006	DOD/NGB	\$47 Million
Wild Rice	8	10+ counties	Easements	2012	OHF	\$10.5 Million
Mississippi Headwaters Habitat Corridor Project	7	First 400 miles of Miss. R. (incl. headwaters lakes & tributaries)	Easements, Acquisition	2016	OHF, CWF	\$25.7 Million
Clean Water Critical Habitat (Northern Waters Land Trust, MLT)	10	Cass, Hubbard, Crow Wing, Aitkin	Easements, Acquisition	2014	OHF	\$27.8 Million
Lakes of Biological Significance (Northern Waters Land Trust, MLT)	3	Crow Wing, Cass, Hubbard, Wadena, Aitkin, Carlton, Itasca, Beltrami, Koochiching, St. Louis, Lake, Cook	Easements	2021	OHF	\$8.4 Million
RIM Critical Shorelands (multiple rivers)	4	Pine R, Crow Wing R, Rum R.	Easements	2016	CWF, TNC	\$11 Million
Protecting North-Central Minnesota Lakes	1	Camp Ripley, Aitkin & Crow Wing Co.	Easements, BMPs	2017	ENRTF	\$0.75 Million
Targeted RIM Easement & Acquisition to the Parcel	3	Pine R. & Leech Lake R. Watersheds	Easements, Acquisition	2020	OHF	\$6.6 Million

ACUB = Army Compatible Use Buffer, BMPs = Best Management Practices, CWF = Clean Water Fund (part of 2008 Legacy Amendment), DOD/NGB = United States Department of Defense/National Guard Bureau, ENRTF = Environment and Natural Resources Trust Fund, MHB = Mississippi Headwaters Board, MLT = Minnesota Land Trust, NRCS = United States Department of Agriculture, Natural Resources Conservation Service OHF = Outdoor Heritage Fund (part of 2008 Legacy Amendment), RIM = Reinvest in Minnesota, TNC = The Nature Conservancy

Proposal to CWC for Upper Mississippi River headwaters basin Strat Plan Metric

- What is the geographic scope of the Upper Mississippi River headwaters basin? **HUC# 0701**
- When to begin measuring protection/restoration? **2018 as Baseline Year**
- Do we measure acres protected/restored by financial sources other than CWF? **YES**
- Do we measure protection & restoration separately? **NO** Can we combine these goals? **YES**
- **PROPOSED Measure: Protection and restoration of 200,000 ~~100,000~~ acres and restoration of ~~100,000~~ acres in the Upper Mississippi River headwaters basin during 2019-2034 by 2034.**