

# TIME / TOOLS / MATERIALS

**TIME** 4 hours

**COST** \$150

**SKILL LEVEL** Basic

# HOW TO BUILD A WOOD SHED

## TOOLS

- Heavy-duty extension cord
- Circular saw (7-1/4" blade)
- Drill
- Drill bits (1/2")
- Phillips head screw tip bit
- Auger bits (1/2")
- Clamps

## MATERIALS

### *Outdoor Treated Lumber*

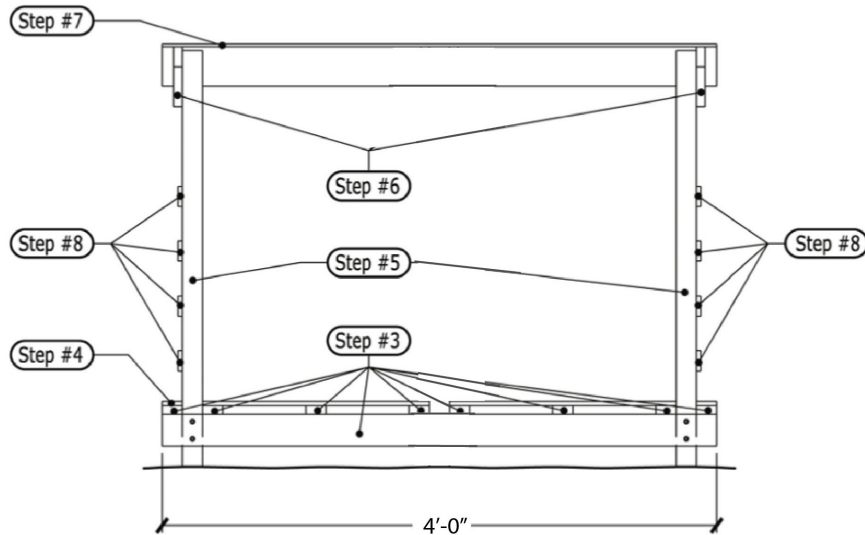
- 1 floor supports / 2" x 6" x 8' / cut to 4' lengths (2 pieces)
- 4 support posts / 4" x 4" x 6' / cut two to 5' 4"
- 1 floor joists / 2" x 4" x 8' / cut to 2' lengths (4 pieces)
- 2 roof joists / 2" x 4" x 4' / cut to 2' lengths (2 pieces)
- 3 flooring slats / 1" x 4" x 4' / utility grade cedar
- 8 side slats / 1" x 4" x 1'10"
- 1 CDX plywood / 1/2" x 2' x 4'

### *Other*

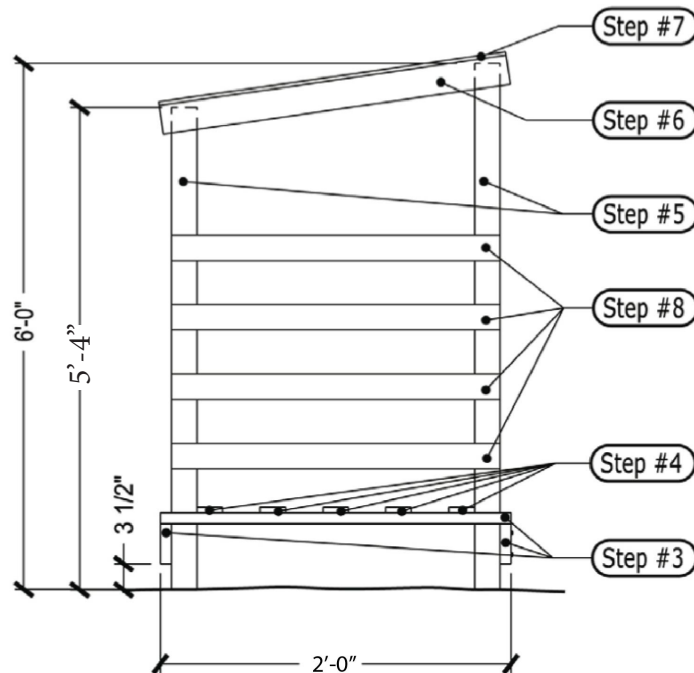
- 1/4" x 6" lag screws
- 3" galvanized deck screws
- 1 1/2" galvanized deck screws
- Roofing material (owner selected)

# WOOD SHED CONSTRUCTION STEPS

## FRONT VIEW



## SIDE VIEW



- STEP 1** Find a level surface to build the shed. The shed should be located in a section of your yard or property where it will get a lot of sun during the summer months and where it will be shielded from heavy fall and winter rains.
- STEP 2** Cut all lumber to size.
- STEP 3** Build the frame structure. Lay out the (2) 2" x 6" x 4' floor supports parallel to each other. Mark where the support posts will be positioned and then lay out the (4) 2" x 4" x 2' floor joists between the floor supports so they are evenly spaced between where the support post locations. Use (2) 3" deck screws to secure the floor joists to the 2" x 6" x 4' floor supports.
- STEP 4** Build the floor. Place the (3) 1" x 4" x 4' floor slats next to and evenly spaced between each post. Attach the floor slats with (2) 1 1/2" deck screws at each 2" x 4."
- STEP 5** Install the posts. Place the (2) 4" x 4" x 6' posts in the front and the (2) 4" x 4" x 5'-4" posts in the back where marked on the floor supports. Use clamps to hold the posts in position and then secure with the lag screws. Do one at a time.
- STEP 6** Attach the roof rafters. Clamp on the (2) 2" x 4" x 2' roof rafters to the outer sides of the outside posts and on both sides of the inner post. Attach with (2) 3" deck screws at each post.
- STEP 7** Screw on the roof. Place the 1/2" x 2' x 4' CDX plywood roof and hold with clamps. Attach with 1 1/2" deck screws every 6" along each 2" x 4" x 2' rafter. You can add roofing materials at your discretion.
- STEP 8** Add (8) 1" x 4" x 1'10" side slats with 6" airspace between each slat to the side of the shed. Affix the slats to the posts with (2) 1 1/2" deck screws.

*The materials and instructions in this document were modified to create a smaller sized wood shed from its original design provided by the Washington Department of Ecology and its partner air agencies. The original can be found at <http://www.burndryfirewood.com>.*