

Report on 2015 SCORE Programs

A summary of recycling and waste management in Minnesota



Minnesota Pollution Control Agency

April 2017

Legislative charge

In 1989, the Legislature adopted comprehensive waste reduction and recycling legislation based on recommendations of the Governor's Select Committee on Recycling and the Environment (SCORE). This set of laws, Minn. Stat. §§ 115A.551 to 115A.557, commonly referred to as SCORE, initiated a stable source of state funding for recycling programs, as well as waste reduction and the improved management of household hazardous wastes, yard waste, and problem materials. SCORE legislation provides grant dollars, along with funding to counties and local government for long-term flexible programs.

Authors

Ben Crowell, MPCA

Contributors/acknowledgements

Anna Kerr, MPCA
Tim Farnan, MPCA
Mark Rust, MPCA
Peder Sandhei, MPCA
Colleen Hetzel, MPCA

Editing and graphic design

Graphic design staff
Administrative staff
PIO staff

The MPCA is reducing printing and mailing costs by using the Internet to distribute reports and information to wider audience. Visit our website for more information.

MPCA reports are printed on 100% post-consumer recycled content paper manufactured without chlorine or chlorine derivatives.

Minnesota Pollution Control Agency

520 Lafayette Road North | Saint Paul, MN 55155-4194 |

651-296-6300 | 800-657-3864 | Or use your preferred relay service. | Info.pca@state.mn.us

This report is available in alternative formats upon request, and online at www.pca.state.mn.us.

SCORE background

In 1989, the Governor's Select Committee on Recycling and the Environment (SCORE) recommended to the Legislature to adopt a comprehensive set of laws, commonly referred to as SCORE. This act initiated a state funding source for recycling programs, as well as waste reduction, management of household hazardous wastes, and problem materials. SCORE legislation and grant dollars, along with funding from counties and local government, provide the basis for long-term, flexible programs.

This *Report on 2015 SCORE Programs* summarizes information submitted by all 87 counties and the Western Lake Superior Sanitary District (WLSSD) on waste management efforts, including funding and costs, waste reduction activities, recycling, composting, household hazardous waste programs, and problem materials collection. This information is used to calculate the cost of managing waste and recycling. The report and information on SCORE programs are available at <http://www.pca.state.mn.us/score>.

The first year the Minnesota Pollution Control Agency (MPCA) collected data was in 1989, and in 1991 counties began collecting data on a calendar year basis, instead of a fiscal year. By year 1991 the collection and format had greatly improved, making the quality of the data better. Since then, SCORE reporting was placed on-line for easier reporting by the counties and management by the State.

In 2007 Legislation Law (Chapter 37, Article 1, Section 62 (1,2) requiring the MPCA in consultation with the Association of Minnesota Counties, the Solid Waste Administrators Association), the Solid Waste Management Coordinating Board, and other interested parties to make recommendations that improve and abbreviate SCORE reporting.

The MPCA's first step was in abbreviating the online 2009 SCORE reporting by preloading previous year data and eliminating some survey questions, along with consolidating expense reporting. The second step began shortly after with an extensive evaluation of the current solid waste reporting systems used by the counties, facilities and the MPCA. That evaluation and lengthy stakeholder input process led to statutory changes to improve data quality through facility and hauler reporting. In 2015 (Reporting year 2014), counties began entering their SCORE information online via ReTRAC software. This moved the Agency to facility reporting through its permit process. As an effort to relieve the burden from counties and to ensure that there is less estimation, the entities directly in charge of the waste will also be reporting. The Agency has worked with the hauling community to develop a data reporting mechanism that will provide information regarding transport of municipal solid waste (MSW), recyclables, and organics from generation to facility. Standard reporting forms have been developed at the request of the haulers in order to simplify the reporting that haulers currently provide to counties. Haulers will begin using these forms and entering this data into ReTRAC in 2017 (Reporting year 2016). Counties will continue to be responsible for any data that they handle directly, such as drop-off events and materials handled outside of the traditional hauling system.

The MPCA uses SCORE information to detail trends in waste generation, management, and disposal. The MPCA Strategic Plan, 2013 to 2017, set a vision that Minnesota's land supports healthy ecosystems and sustainable land uses. To reach this vision, solid waste is to be managed to conserve materials, resources and energy; by ensuring waste is reduced, recycling and organic recovery is increased, resource recovery capacity is maintained, and landfilling is reduced.

Contents

- SCORE background..... i**
- Summary report.....1**
 - Minnesota counties diverted 68% of its waste from landfills 2
 - MMSW generation in Minnesota 2
 - Source reduction and reuse 4
 - Recycling..... 4
 - MMSW processing and disposal 7
 - Resource recovery and landfilling 7
 - Illegal on-site disposal 8
 - SCORE funding..... 9
 - 2015 policy and program highlights 11
 - SCORE reporting 11
 - 2015 legislation 12
 - Restriction on disposal 12
- Conclusion12**
- Appendix A:13**

Summary report

The year 2015 was a transition year for the SCORE Program. The goal of this transition is to create a reporting system that generates accurate and reliable data that can be used to develop sound laws, policies, and programs that shape our waste management system in order to meet waste management goals and policies established in statute and rule. The first step was to create a single reporting system that the entities that are directly in charge of managing our waste will report into directly. This reporting system was developed within ReTRAC software. Facilities started reporting their 2013 data online via ReTrac in 2014 and counties started reporting their 2014 SCORE data via ReTRAC in 2015. Haulers will report 2016 data on the amount and type of waste they collect and the destination facility in 2017. Unfortunately, legislation to require hauler reporting was not passed until 2015 which has led to unintended gaps in data that are crucial for calculating landfill diversion rates and recycling rates. However, starting in 2016, all necessary data will be reported into ReTRAC and that data will be more accurate and reliable than in the past.

The second step to achieving higher quality data was to eliminate the use of estimates in our reporting. Previously, several estimates including problem materials not recycled, State estimates of problem materials, and a commercial recycling estimate were utilized, as actual tonnages were difficult to acquire. However, these estimates were based on population. Therefore, trends could not be established on how effective programs across the State were at getting these materials recycled. The MPCA started phasing out these estimates for the 2014 SCORE reporting year and eliminated estimates completely for the 2015 SCORE reporting year. The MPCA is committed to working with counties to develop methods to acquire recycling data for these materials. The MPCA will also work with counties to develop sound calculations where reporting on these materials is incomplete. The 2015 reporting year will be the new baseline for establishing trends in recycling in Minnesota.

Even through the transition, there were trends that could be established. Recycling of source separated organic material (SSOM) was up by 33% over 2014. Previous investments in organics facilities and organics collection programs have translated into increased organics recycling. Contrary to organics, paper and glass recycling have decreased by 9% and 13% since 2013. However, Minnesota counties have increased their commitment to eliminating backyard burning of waste. There are now 32 counties that have local ordinances that prohibit illegal backyard burning of solid waste.

The amount of dollars spent to implement the county programs increased by 7.8% from 2014. In 2015, 78% of the costs were funded with county funds. SCORE disbursement dollars covered only 22% of county program costs. 2014 legislation increased these funds for Fiscal Year 2015 with a one-time \$4 million dollar disbursement. Beginning in Fiscal Year 2016, an additional \$3 million will be added to the annual base funding for SCORE grants. These additional funds are added to the base payment to assist all counties with their waste reduction, reuse, and recycling efforts. The Metropolitan Area counties must use half of these new funds for organic diversion activities.

Minnesota counties diverted 68% of its waste from landfills

The waste hierarchy

Preferred environmental option



Least preferred environmental option

The amount of MSW diverted from landfilling includes the amount of waste that was collected and recycled, composted, and processed at resource recovery facilities in 2015.

Waste management in Minnesota is guided by the Minnesota Waste Management Act, Minn. Stat. § 115A, an integrated waste management systems hierarchy that protects the state's land, air, water, and public health. This statute identifies the most to least preferred management, a hierarchy that prioritizes waste reduction, recycling, composting, and resource recovery.

SCORE is a measurement of total generation of MSW. This includes wastes composted, recycled, tons sent to landfills and resource recovery facilities, and materials disposed of illegally on-site (burn barrels or farm dumps).

In 1989, Minnesota legislation set county recycling goals. Each Greater Minnesota county (outside of the seven-county Metro Area) must recycle a minimum of 35% by weight of total solid waste generation. The seven metropolitan counties currently have a 50% by weight goal that increases to 75% in 2030. This new goal was passed into law in 2014.

MSW generation in Minnesota

Mixed Municipal Solid Waste (MMSW) is defined as "garbage, refuse, and other solid waste from residential, commercial, industrial, and community activities that the generator of the waste aggregates for collection." It includes common materials found in household and commercial garbage such as packaging materials, containers, food discards, plastic, paper, etc.

MMSW does not include auto hulks, street sweepings, ash, construction debris, mining waste, sludges, tree and agricultural wastes, tires, lead acid batteries, motor and vehicle fluids and filters, and other materials collected, processed, and disposed of as separate waste streams (Minn. Stat. § 115A.03, subd. 21). Recyclables, such as paper, plastic, glass, metal, and organics, are not considered MMSW if they are separated from the MMSW stream. This section analyzes how materials that can be found in the MMSW stream are managed.

Due to changes in the way SCORE data was collected in 2014, MMSW information was incomplete. MMSW disposal data does not include out-of-state disposal for years 2014 and 2015 due to reporting changes. Hauler reporting (which was passed in the 2015 legislative session) will help fill this temporary gap of information starting in 2016. MMSW data (Landfill and Waste-to-Energy) in Table 1 was estimated by comparing in-state disposal numbers in 2015 to in-state disposal numbers in 2013 (the last year access to both in-state and out-of-state data is available). Therefore, we cannot calculate the precise county or State recycling rates for 2015. Recycling and organics management methods were fully reported and can be observed in Table 1. This is a short-term issue as we transition to a new method of tracking this data.

Table 1. MSW management in Minnesota

Management method	2015	
	Tons of material	Percent
Landfill	1,742,937	32%
WTE (waste-to-energy)	1,296,517	23%
Recycling	1,822,637	33%
Organics	575,218	11%
On-Site Disposal	56,657	1%
Total Solid Waste Managed	5,493,966	

In 2015, approximately 5.5 million tons of mixed MSW was generated in Minnesota. Statewide this represents 5.1% decrease from 2014. However, as stated above, reporting on SCORE continues to transition and 2015 marked the first year where only documented recycling tonnages were allowed and estimates based on population only were not allowed.

Therefore, the amount of traditional recycling (paper, glass, plastic, etc.) was down significantly as a result which lowered the overall MSW generation reported in SCORE. Also note, because estimates were no longer used, Problem Materials Not Recycled will no longer be calculated as well. 2015 will establish a new benchmark with more accurate data to better assess the state of the waste management system in Minnesota.

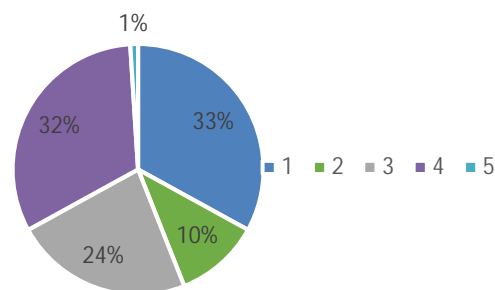


Figure 1. MSW management in Minnesota

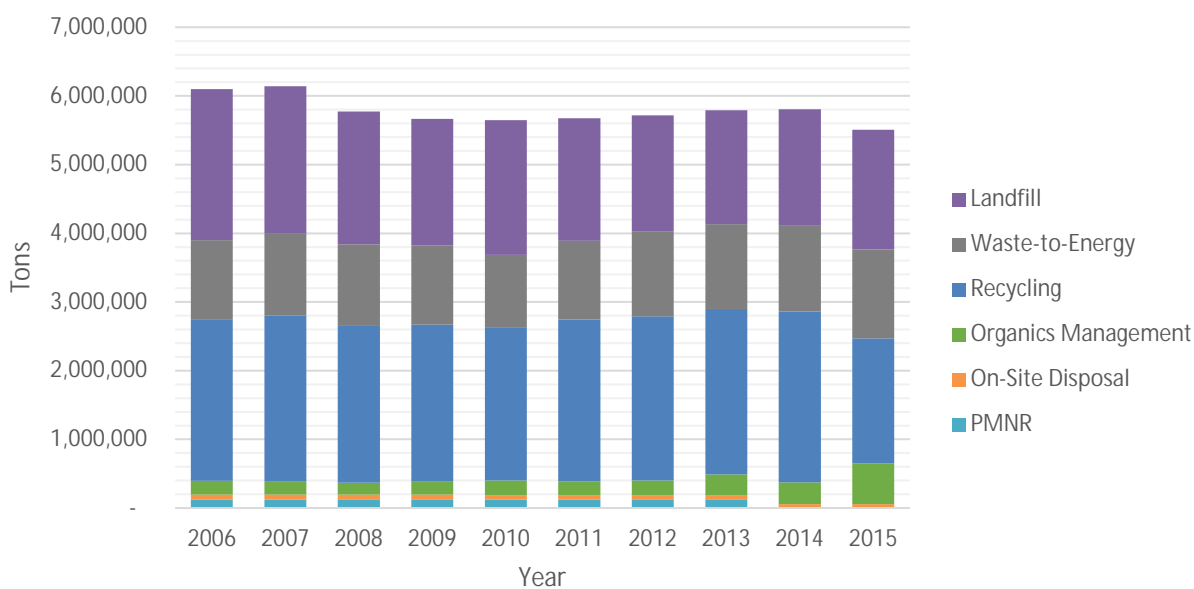


Figure 2. MSW generation trends

The total MSW generation is the amount of waste landfilled, sent to WTE facilities for processing, recycled (organics and non-organics), reused, and burned or dumped illegally via on-site disposal. The 87 counties and the WLSSD reported tons of recycling and organics. The tons reported are gathered by individual counties. The tonnages reported are as accurate as counties can tabulate. These tonnages are dependent on the cooperation of haulers and commercial businesses. Counties also calculate on-site disposal by determining the population they believe does not have collection or use drop-off sites, and; therefore, burn or bury illegally on-site. For 2015, landfill and WTE tonnages were estimated by the MPCA by comparing year-to-year tonnages reported by in-state facilities as discussed above. Starting in 2016, these tonnages will be supplied by haulers.

Source reduction and reuse

According to Minn. Stat. § 115A.55, "It is a goal of the state and counties to reduce the generation of municipal solid waste." In order to meet this goal, the counties and the State will have to work on source reduction along with other partners including citizens, businesses, and organizations. In the last few years, the MPCA has focused its source reduction programs on reuse, food waste prevention, and procuring more sustainable products. The MPCA will continue to work on these programs and expects the counties to support and implement programs in these areas as well.

In order to determine if the amount of waste created each year is from an increase in population or an increase in consumption, the MPCA calculates the amount of waste generated by the current population. In 2015, the Minnesota per capita rate decreased to 1.002 tons per person (2,004 pounds/person/year or a decrease of 5.8% from 2014). Per capita waste reduction is a good thing, but growth in overall waste generation takes a toll on the environment. Such increases in waste generation are unsustainable and must be curbed through aggressive source reduction and reuse strategies, since source reduction and reuse have the largest environmental benefits. For example, in 2015 the Minnesota Technical Assistance Program's Materials Exchange diverted 92,320 pounds of material through reuse. While this may seem like a small amount of material, the environmental benefits of reuse are more significant than management methods lower on the waste management hierarchy such as recycling. Last year, just over 7,250 pounds of computer and office equipment were exchanged. Recycling this material would have saved 9 metric tons of carbon dioxide equivalent (MTCO_{2e}). If those same 7,250 pounds were reused just one time, 186 MTCO_{2e} would have been saved which is 177 MTCO_{2e} more than recycling. This is just one example of why recycling and reduction/reuse should not be compared just on a pound-to-pound basis and why it is important to document management methods for material.

Recycling

Minnesota recycled 2,397,915 tons of MSW in 2015. Materials included in this total are: paper, glass, metal, plastic, and organics. The overall statewide recycling rate is estimated to be 44%. The definition of recycling also includes reuse; therefore, some of the material included in these numbers include materials that are technically reused. Recycling and reuse add tremendous value to the State's economy. Reuse and the economic impact of reuse was studied in depth recently by the Agency. The results of the study can be found on pages 20 and 21 of the 2015 Solid Waste Policy Report. The 2015 Solid Waste Policy Report can be found here: <https://www.pca.state.mn.us/sites/default/files/lrw-sw-1sy15.pdf>

Table 2. 2015 materials collected for recycling

Category	Tons recycled
Paper	863,594
Metal	503,363
Glass	129,298
Plastic	62,871
Organics	575,218
Banned	118,315
Other	145,255
Total	2,397,915

As discussed above, recycling estimates based on population were no longer allowed to be reported by counties in 2015. Commercial recycling estimates in the Metropolitan Area and State estimates for problem materials were no longer allowed. Therefore, we see a significant drop in the “Other” category

from 2014 to 2015. Counties and the State will continue to make efforts to document materials that are being recycled in 2016 and future years by continuing to improve reporting by commercial and public entities.

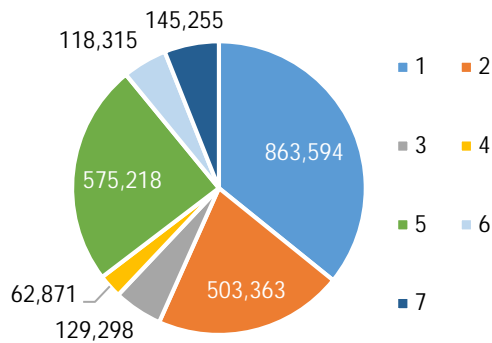


Figure 3. 2015 materials collected for recycling

Traditional recycling (paper, glass, metal, and plastic) tonnages remained steady overall in 2015. However, we continue to see declines in paper (-9%) and plastic (-13%) recycling from 2013 to 2015.

Some of those decreases may be attributed to lighter weight plastic containers and more digital consumption of news and information. However, we know that there is still opportunity to recycle more of these materials as evidenced by the 2013

Minnesota Statewide Characterization Study. Based on sampling at six sites around the state, the data reveals that Minnesota waste has changed. Paper, plastics, and organics are still the top three components of our garbage, but the proportions have changed-plastic is up, food is up, but paper is down. This Study shows that there is an opportunity to increase recycling, as 70% of what is now disposed of could be recycled or composted. The 2013 Minnesota Statewide Waste Characterization study can be found at: <http://www.pca.state.mn.us/ac966ux>

2013



Figure 4. 2013 Minnesota statewide waste characterization

Significant gains are being made on the largest portion of our waste. Organics recycling (Food to People, Food to Livestock, SSOM, and Yard Waste) is up 16.7% over 2014. In 2015, 11% of the MSW generated was managed as organics. Much of this gain is due to counties making efforts to document Yard Waste Composting and Food to Livestock recycling. 2013 was the first year since 1993 that counties were asked to track and report actual yard waste tonnages. In previous years, yard waste was not documented through SCORE reporting. Counties that had yard waste collection programs were able to apply a 5% credit to their recycling rates without documentation. Therefore, a substantial portion of the increase is likely attributable to the changes in reporting practice. However, many communities are undertaking significant efforts to capture SSOM from residents, businesses, and institutions. In 2015, SSOM increased by 33% over 2014. As communities continue to expand opportunities to increase organics collection, we can expect to see more gains in organics recycling in future years.

As stated above, 2015 establishes a new baseline for SCORE data. The goal of the MPCA is to establish more accurate and reliable data to better assess how resources and waste are managed in Minnesota.

Table 3. Materials collected for recycling tons and trends

Category	2013	2014		2015	
	Tons	Tons	% Change	Tons	% Change
Paper	943,375	879,152	-7.31%	863,594	-1.80%
Metal	476,541	518,706	8.13%	503,363	-3.05%
Glass	125,023	126,952	1.52%	129,298	1.81%
Plastic	71,132	60,511	-17.55%	62,871	3.75%
Organics	310,417	479,162	35.22%	575,218	16.70%
Banned	134,841	41,875	-222.01%	118,315	64.61%
Other	653,290	696,907	6.26%	145,255	-379.78%
Total	2,714,619	2,803,265	3.16%	2,397,915	-16.90%

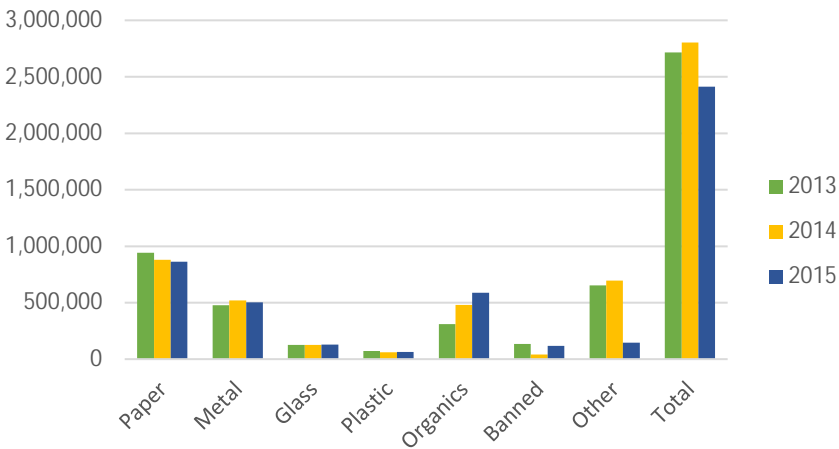
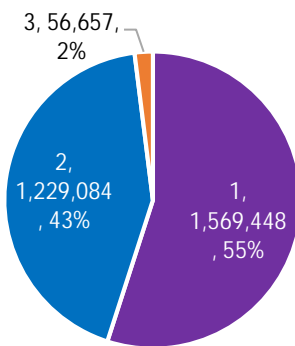


Figure 5. Materials collected for recycling tons and trends

MMSW processing and disposal

There are three main management methods for MMSW in Minnesota: landfilling, resource recovery facilities, and illegal on-site disposal. Due to reporting changes, data regarding MMSW disposed of out-of-state are not available for 2015. In order to analyze trends in MMSW processing and disposal, only



data reported by in-state facilities will be used; therefore, the numbers in these sections will be different from numbers reported above. Starting in 2016, hauler reporting will provide complete and accurate MMSW data for both in-state and out-of-state waste.

In 2015, 2,855,189 tons of MMSW were processed at in-state resource recovery facilities, or disposed of in in-state landfills or on-site illegally in Minnesota, a 4.95% increase over 2014.

Figure 6. In-state MMSW management

Resource recovery and landfilling

In 2015, waste burned for energy at resource recovery facilities in Minnesota totaled over 1.2 million tons (1,229,084), a 1% increase over 2014. Forty-three percent of MMSW managed at in-state facilities was processed at resource recovery facilities.

Several counties have completed the process of designating MMSW to WTE processing facilities per Minn. Stat. §§ 115A.80 to 89. Approved designation plans for Dodge, Martin, Faribault, Olmsted, Stearns, Benton, and eastern Sherburne counties are now in place. In 2015, the Ramsey and Washington counties jointly purchased the resource recovery facility in Newport with intentions of designating MMSW to the facility. Goodhue County has updated their Solid Waste Management Plan to establish the foundation for a designation plan that would direct MMSW to the Red Wing Resource Recovery Facility. It is expected that more MMSW will be processed at resource recovery facilities in 2016 and beyond as a result of these and other developments.

However, approximately 1.57 million tons of MMSW was disposed of at landfills in Minnesota in 2015, a 5% increase over 2014. Furthermore, as can be seen in Table 4, a higher percentage of MMSW managed at in-state facilities is being landfilled. In 2015, 55% of the MMSW managed in-state was landfilled. This is an increase over 2013 and 2014 where 53% and 54% of MMSW was landfilled respectively. Counties designating waste to resource recovery facilities may reverse this trend. Also, the MPCA continues to move forward with the intention to enforce Minn. Stat. § 473.848, which restricts the land disposal of MMSW generated in the seven-county Metropolitan Area which may increase the amount of waste diverted from landfill facilities in Minnesota.

Table 4. 2013-2015 In-state MMSW management

Management method	2013	Percent	2014	Percent	2015	Percent
Landfill	1,437,737	53%	1,492,502	54%	1,569,448	55%
Waste-to-Energy	1,225,789	45%	1,216,560	44%	1,229,084	43%
On-Site Disposal	57,113	2%	58,464	2%	56,657	2%
Total	2,720,639		2,767,526		2,855,189	

Illegal on-site disposal

On-site disposal of MSW, either burning or burying, has been an on-going practice for many years. Although it is against the law for most people, some farmers are still allowed to burn or bury very limited types of household garbage under existing Minn. Stat. §§ 88.171 and 17.135. However, it should be noted that nearly all materials found in modern garbage are considered prohibited materials (Minn. Stat. § 88.171) and as a result, are illegal to burn for all Minnesotans regardless of the farmer exemption found in Minn. Stat. § 17.135.

In the 2015 SCORE survey, counties estimated that 56,657 tons of waste was disposed of on-site representing 2% of the total MSW managed in Minnesota. This estimate may be very conservative. According to a 2010 study on backyard garbage burning in Minnesota, 39% of all rural residents (550,797 persons or 228,000 households) burned their garbage on-site totaling 201,041 tons each year. The 2010 Study may be seen at:

<http://www.pca.state.mn.us/index.php/view-document.html?qid=14316>.

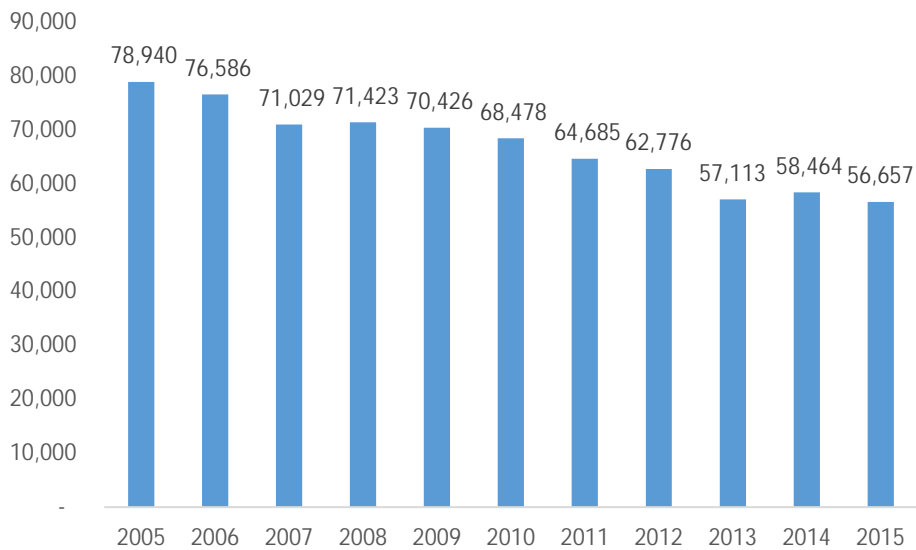


Figure 7. On-site disposal

In Minnesota, 32 counties have formally banned garbage burning at the local level, passing a county board resolution stating garbage service is reasonably available to all residents and making onsite disposal illegal for county residents. MPCA has available at its website facts and resources to help in reducing the amount of illegal backyard burning. <http://www.pca.state.mn.us/index.php/living-green/living-green-citizen/reduce-reuse-recycle/dont-burn-your-garbage.html>

SCORE funding

Funding of SCORE programs and revenues supporting county SCORE programs totaled \$79,991,572. The majority of revenues supporting the counties SCORE programs are from county service fees (41%), with SCORE dollars coming in second at 22%, and general revenues 14% of total revenues. The remaining 23% of revenues is from: materials sales, other, grants, processing tip fee, land disposal facility surcharge, adjustment to carry-over balance, and household hazardous waste (HHW) funding.

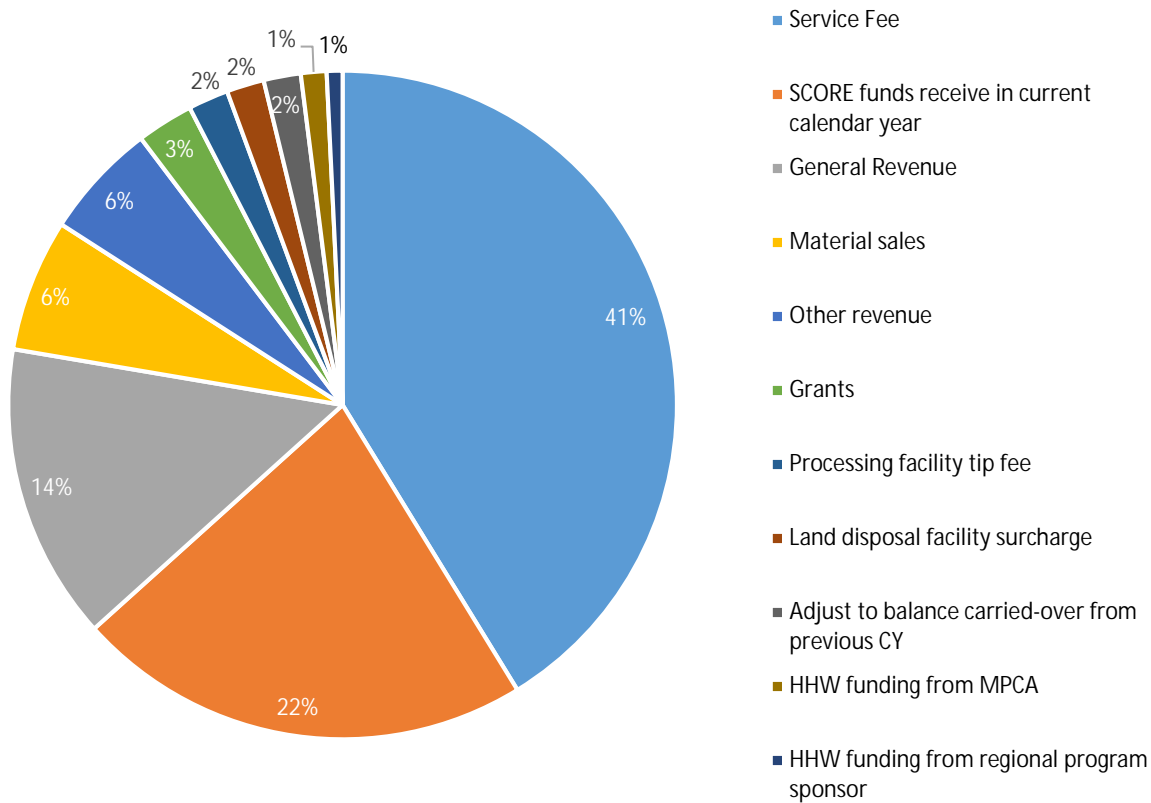


Figure 8. 2015 SCORE program revenue

SCORE reported expenses for 2015 totaled \$80,040,620. In looking closer to what the counties are spending their dollars on: 32% was spent on recycling, 20% was spent on administration and oversight, and 16% was spent on HHW and problem material programs management. The remaining 34% is divided between grants to others, waste-to-energy processing, education, organics, source reduction, litter prevention, and market development.

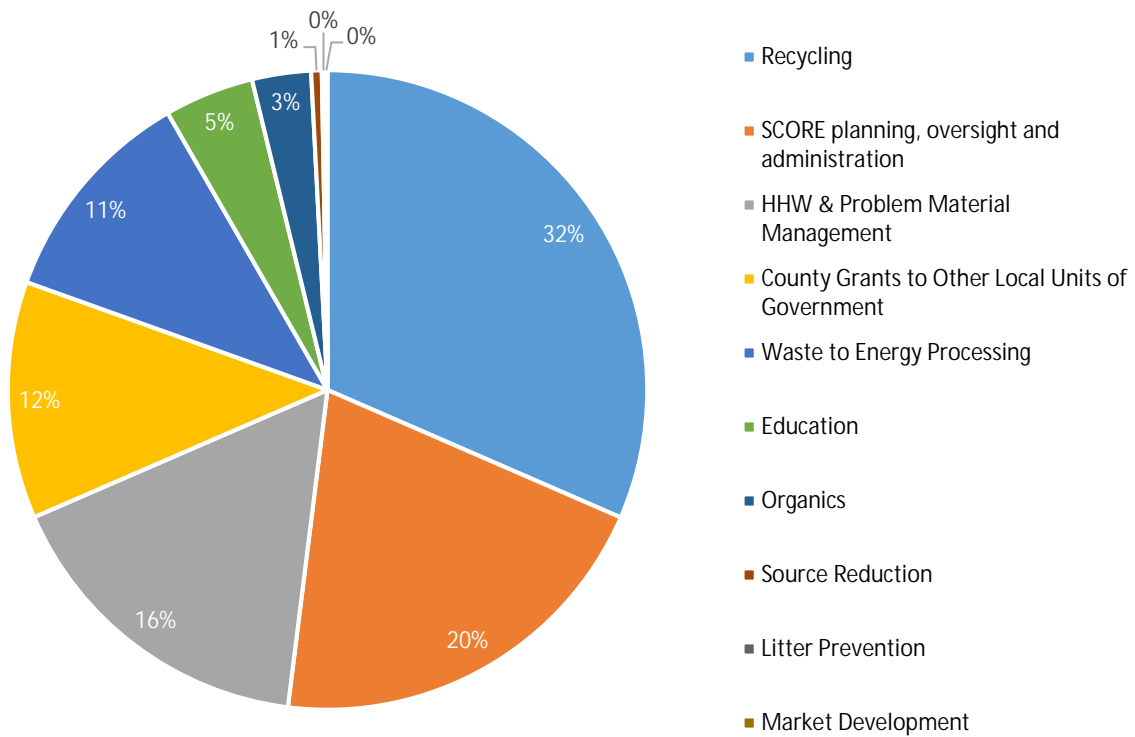


Figure 9. 2015 SCORE program expenses

This investment is in addition to undocumented dollars spent by other local units of government, such as townships and cities, on programs such as recycling, HHW collection, and waste education.

Money from the State is passed onto the county level in the form of annual block grants. Each county is required to match the funding from the Legislature with a local contribution of at least 25%.

2015 policy and program highlights

A number of solid waste programs, reporting, and policy changes occurred in 2015. These changes will affect future SCORE reporting and data going forward. The following sections detail the 2015 activities intended to improve resource and waste management in Minnesota.

SCORE reporting

In 2015, counties entered their 2014 SCORE data online via ReTRAC software. This was the first year the ReTRAC system was used for reporting SCORE data. The first year of reporting went well; however, changes were made to the reporting system to ensure counties received credit for their efforts in the electronics and HHW programs.

As an effort to relieve the burden from counties and to improve overall data quality (e.g. less estimation), the entities directly in charge of handling recycling and waste will also be reporting in ReTRAC. In 2015, legislation was passed that required licensed haulers to report the amount of waste that they collected from residents and businesses, the county in which the waste was collected, and the facility to which they delivered the waste. The MPCA continued to work with haulers to develop standard reporting forms in order to simplify the reporting that haulers currently provide to counties.

Hauler reporting will address the data gaps experienced in the 2014 and 2015 SCORE data. Haulers will be required to report their 2016 data into ReTRAC by February 1, 2017. Counties will still be responsible for collecting recycling data for material that bypasses the hauler reporting system. The State will continue to assist in collecting information from businesses that operate statewide and handle recycling internally. Additionally, the State will continue working with counties to develop sound strategies for calculating recycling tonnages where data is incomplete.

2015 legislation

In 2015, Minnesota legislators passed a number of bills that will have positive effects on recycling in the future.

Legislation was passed to establish a new competitive grant program for greater Minnesota counties and cities with a population less than 45,000. Eligible projects include development of residential recycling through curbside or centrally located collection sites, including but not limited to electronic waste. Applications for the first round of this new grant program were accepted in 2016.

Legislation was also passed to encourage organics recovery. The definition of "Recyclable Materials" was amended to include "sole source food streams managed through a biodegradative process." These materials will also count towards meeting statutory county recycling goals. In addition to the change in the definition of "Recyclable Materials," statutory language was added to allow Metropolitan Area counties to spend 50% of new SCORE grant dollars on development and implementation of food waste prevention programs or collection and transportation of food donated to humans or fed to animals; and to processing of source separated compostables following anaerobic digestion.

Restriction on disposal

The MPCA is taking steps to increase the amount of waste managed at resource recovery facilities by working to enforce Minn. Stat. § 473.848, which restricts land disposal of unprocessed MMSW generated in the seven-county Metropolitan Area. Although the statute only restricts disposal of MMSW generated in the Metro Area, any landfill in Minnesota that accepts metro waste must comply, regardless of their geographic location. The MPCA intends to enforce this restriction through landfill permitting and has already modified four landfill permits (Elk River, Spruce Ridge, Burnsville, and Pine Bend) to obtain compliance and reporting under the statute. The MPCA is also working with resource recovery facilities to obtain their compliance and reporting under the statute.

Conclusion

Although 2015 was a transition year for SCORE reporting, counties continued to implement and expand programs to increase waste reduction, reuse, recycling, organics diversion, and improve the management of solid waste. Counties continue to make efforts to stop illegal onsite disposal of MMSW. Waste is being designated to waste processing facilities in an effort to reduce the need for indiscriminate land disposal. Programs are being developed to collect and process SSOM. These efforts will lead to more waste being managed in accordance with the State's policies and goals.

Appendix A: County SCORE survey responses

County survey responses
Finances: Revenues (part 1)

County	Adjustment to carry over	General Revenue	Service Fee	Processing facility tip fee	Land disposal facility surcharge
Aitkin	\$0	\$174,903	\$0	\$0	\$0
Anoka	\$0	\$2,073,616	\$0	\$0	\$0
Becker	\$353	\$0	\$372,916	\$0	\$0
Beltrami	\$0	\$0	\$47,810	\$0	\$0
Benton	\$0	\$0	\$171,829	\$0	\$0
Big Stone	\$0	\$116,320	\$2,774	\$0	\$0
Blue Earth	\$0	\$141,375	\$200	\$0	\$0
Brown	\$9,245	\$357,727	\$19,005	\$0	\$0
Carlton	\$25,050	\$0	\$0	\$54,160	\$0
Carver	\$0	\$0	\$625,551	\$0	\$0
Cass	\$0	\$0	\$789,114	\$0	\$0
Chippewa	\$0	\$102,676	\$0	\$0	\$0
Chisago	\$0	\$0	\$253,283	\$13,159	\$0
Clay	\$0	\$0	\$584,295	\$0	\$0
Clearwater	\$0	\$0	\$105,674	\$0	\$0
Cook	\$0	\$176,463	\$0	\$0	\$0
Cottonwood	\$0	\$183,246	\$0	\$0	\$0
Crow Wing	\$0	\$0	\$471,030	\$105,521	\$0
Dakota	-\$300,704	\$1,414,279	\$0	\$0	\$0
Dodge	\$30,422	\$223,588	\$0	\$65,229	\$0
Faribault	\$0	\$104,879	\$230,934	\$0	\$0
Fillmore	-\$4,876	\$17,423	\$0	\$0	\$0
Freeborn	\$0	\$393,694	\$100	\$0	\$0
Goodhue	\$0	\$314,953	\$0	\$0	\$0
Grant	\$0	\$36,315	\$97,945	\$0	\$0
Hennepin	\$0	\$0	\$5,907,442	\$332,303	\$0
Houston	\$0	\$184,140	\$3,180	\$0	\$0
Hubbard	\$0	\$369,161	\$0	\$0	\$0
Isanti	\$3	\$28,594	\$0	\$0	\$0
Itasca	\$0	\$254,700	\$0	\$0	\$0
Jackson	\$0	\$18,872	\$0	\$0	\$0
Kanabec	\$2,083	\$15,951	\$0	\$0	\$0
Kandiyohi	\$0	\$87,014	\$298,926	\$0	\$0
Kittson	\$0	\$0	\$0	\$0	\$0
Koochiching	\$0	\$104,465	\$104,465	\$21,106	\$0
Lac qui Parle	-\$284,472	\$53,918	\$0	\$0	\$0
Lake	\$0	\$40,421	\$0	\$0	\$0

County survey responses
Finances: Revenues (part 1)

County	Adjustment to carry over	General Revenue	Service Fee	Processing facility tip fee	Land disposal facility surcharge
Lake of the Woods	\$0	\$136,069	\$0	\$0	\$0
Le Sueur	\$0	\$204,527	\$0	\$0	\$0
Lincoln	\$0	\$187,265	\$0	\$8,830	\$0
Lyon	\$0	\$0	\$219,057	\$0	\$106,430
Mahnomen	\$1,963	\$0	\$0	\$0	\$0
Marshall	\$0	\$0	\$2,601	\$0	\$0
Martin	\$0	\$330,900	\$322,371	\$0	\$0
McLeod	\$0	\$0	\$96,390	\$484,561	\$892,213
Meeker	\$960	\$18,000	\$0	\$0	\$0
Mille Lacs	\$0	\$26,277	\$0	\$0	\$0
Morrison	\$0	\$271,984	\$0	\$0	\$141,162
Mower	\$0	\$0	\$300,959	\$0	\$0
Murray	\$35,448	\$17,423	\$0	\$0	\$0
Nicollet	\$0	\$291,811	\$0	\$0	\$0
Nobles	\$0	\$0	\$133,458	\$0	\$225,264
Norman	\$0	\$17,423	\$0	\$0	\$0
Olmsted	\$1,192,371	\$0	\$0	\$0	\$0
Otter Tail	\$0	\$0	\$920,694	\$0	\$0
Pennington	\$0	\$0	\$0	\$0	\$0
Pine	\$0	\$79,677	\$0	\$0	\$0
Pipestone	-\$69,635	\$192,661	\$8,148	\$0	\$0
Polk	\$0	\$0	\$517,843	\$0	\$0
Pope/Douglas	\$0	\$250,000	\$0	\$0	\$0
Ramsey	\$0	\$0	\$11,990,980	\$0	\$0
Red Lake	\$0	\$16,950	\$0	\$0	\$0
Redwood	\$0	\$586,253	\$0	\$0	\$0
Renville	\$0	\$215,000	\$0	\$0	\$0
Rice	\$0	\$0	\$1,009,397	\$0	\$0
Rock	\$42,023	\$21,344	\$0	\$0	\$0
Roseau	\$97,905	\$0	\$0	\$0	\$0
Scott	\$0	\$102,847	\$0	\$0	\$0
Sherburne	\$0	\$0	\$0	\$0	\$69,475
Sibley	\$409	\$130,065	\$0	\$0	\$0
St. Louis (partial)	\$0	\$0	\$746,260	\$0	\$0
Stearns	\$0	\$112,026	\$142,333	\$0	\$0
Steele	\$0	\$573,992	\$620	\$0	\$0

**County survey responses
Finances: Revenues (part 1)**

County	Adjustment to carry over	General Revenue	Service Fee	Processing facility tip fee	Land disposal facility surcharge
Stevens	\$0	\$163,386	\$0	\$0	\$0
Swift	\$165,154	\$139,385	\$0	\$0	\$0
Todd	\$0	\$0	\$421,684	\$0	\$0
Traverse	\$28,824	\$17,423	\$0	\$0	\$0
Wabasha	\$16,872	\$0	\$0	\$0	\$0
Wadena	-\$7,853	\$0	\$125,737	\$21,856	\$0
Waseca	\$200,500	\$0	\$0	\$0	\$0
Washington	\$0	\$0	\$3,503,106	\$0	\$0
Watonwan	\$0	\$14,086	\$173,051	\$0	\$0
WLSSD	\$0	\$0	\$1,492,808	\$450,065	\$0
Wilkin	\$52,394	\$0	\$80,187	\$0	\$0
Winona	\$201,695	\$272,093	\$619,625	\$0	\$0
Wright	\$0	\$96,414	\$20,701	\$0	\$0
Yellow Medicine	\$0	\$0	\$55,166	\$0	\$18,860
Metro Area	\$275,654	\$3,590,742	\$21,401,528	\$386,463	\$0
Greater Minn.	\$1,711,786	\$7,883,233	\$11,588,121	\$1,170,326	\$1,453,404
Total	\$1,436,132	\$11,473,975	\$32,989,648	\$1,556,789	\$1,453,404

County survey responses
Finances: Revenue (part 2)

County	SCORE pass-through	Grants	HHW funding	Material sales	Other	Total revenue
Aitkin	\$69,692	\$0	\$3,421	\$0	\$23,681	\$271,697
Anoka	\$1,021,082	\$253,916	\$0	\$11,769	\$16,641	\$3,377,024
Becker	\$99,170	\$0	\$31,047	\$206,661	\$9,887	\$720,034
Beltrami	\$136,462	\$0	\$7,840	\$0	\$0	\$192,112
Benton	\$117,158	\$0	\$0	\$0	\$76,400	\$365,386
Big Stone	\$69,692	\$0	\$2,400	\$0	\$700	\$191,885
Blue Earth	\$195,286	\$0	\$56,420	\$1,829	\$0	\$395,110
Brown	\$76,021	\$1,096	\$12,237	\$0	\$22,273	\$497,604
Carlton	\$106,101	\$16,711	\$6,956	\$0	\$584	\$209,562
Carver	\$287,455	\$147,759	\$54,448	\$27,540	\$227,059	\$1,369,813
Cass	\$85,346	\$0	\$7,207	\$8,314	\$0	\$889,980
Chippewa	\$69,692	\$4,900	\$2,903	\$0	\$15,307	\$195,478
Chisago	\$161,011	\$0	\$22,045	\$4,541	\$30,207	\$484,246
Clay	\$181,511	\$0	\$9,414	\$1,450	\$0	\$776,670
Clearwater	\$69,692	\$0	\$4,602	\$0	\$0	\$179,968
Cook	\$69,692	\$0	\$2,527	\$66,131	\$0	\$314,813
Cottonwood	\$69,692	\$0	\$0	\$52,768	\$0	\$305,706
Crow Wing	\$188,952	\$0	\$9,884	\$0	\$4,793	\$780,180
Dakota	\$1,224,256	\$358,814	\$307,289	\$0	\$10,756	\$3,014,690
Dodge	\$69,692	\$0	\$600	\$70,245	\$6,665	\$466,441
Faribault	\$69,692	\$0	\$0	\$0	\$4,670	\$410,175
Fillmore	\$69,692	\$0	\$0	\$0	\$0	\$82,239
Freeborn	\$92,176	\$0	\$5,369	\$0	\$8,488	\$499,827
Goodhue	\$0	\$0	\$7,782	\$44,395	\$0	\$367,130
Grant	\$133,495	\$0	\$0	\$0	\$12,878	\$280,633
Hennepin	\$3,590,411	\$804,303	\$68,597	\$719,772	\$72,756	\$11,495,584
Houston	\$69,692	\$0	\$3,882	\$69,379	\$2,290	\$332,563
Hubbard	\$69,692	\$0	\$3,221	\$103,362	\$0	\$545,435
Isanti	\$114,377	\$0	\$1,360	\$0	\$0	\$144,334
Itasca	\$136,104	\$0	\$5,028	\$8,721	\$0	\$404,553
Jackson	\$69,692	\$0	\$0	\$5,115	\$0	\$93,679
Kanabec	\$69,692	\$0	\$0	\$0	\$57	\$87,783
Kandiyohi	\$126,302	\$0	\$64,534	\$305,830	\$112,351	\$994,957
Kittson	\$0	\$0	\$0	\$0	\$17,914	\$17,914
Koochiching	\$69,692	\$0	\$2,824	\$32,504	\$0	\$335,056
Lac qui Parle	\$69,692	\$0	\$2,400	\$0	\$4,778	-\$153,684
Lake	\$69,692	\$0	\$3,980	\$8,915	\$749	\$123,757
Lake of the Woods	\$133,495	\$0	\$0	\$36,918	\$0	\$306,482

County survey responses
Finances: Revenue (part 2)

County	SCORE pass-through	Grants	HHW funding	Material sales	Other	Total revenue
Le Sueur	\$83,034	\$833	\$4,004	\$0	\$16,900	\$309,298
Lincoln	\$69,692	\$0	\$0	\$0	\$20,210	\$285,997
Lyon	\$76,712	\$0	\$70,208	\$440	\$45,678	\$518,526
Mahnomen	\$69,692	\$0	\$2,801	\$0	\$17,914	\$92,370
Marshall	\$105,520	\$0	\$0	\$0	\$0	\$108,121
Martin	\$69,692	\$0	\$0	\$0	\$25,724	\$748,687
McLeod	\$107,539	\$0	\$22,257	\$885,143	\$920,329	\$3,408,433
Meeker	\$69,692	\$0	\$3,275	\$0	\$663	\$92,591
Mille Lacs	\$77,140	\$0	\$0	\$0	\$0	\$103,417
Morrison	\$98,126	\$0	\$7,104	\$8,126	\$0	\$526,502
Mower	\$117,495	\$0	\$7,617	\$153,484	\$3,217	\$582,772
Murray	\$69,692	\$0	\$0	\$0	\$342	\$122,905
Nicollet	\$99,028	\$833	\$5,665	\$0	\$14,705	\$412,042
Nobles	\$69,692	\$0	\$0	\$0	\$0	\$428,414
Norman	\$69,692	\$0	\$3,053	\$0	\$0	\$90,168
Olmsted	\$446,858	\$0	\$123,409	\$333,846	\$216,738	\$2,313,222
Otter Tail	\$171,960	\$0	\$37,477	\$539,207	\$0	\$1,669,338
Pennington	\$0	\$0	\$0	\$0	\$0	\$0
Pine	\$87,054	\$0	\$817	\$0	\$2,000	\$169,547
Pipestone	\$69,692	\$0	\$0	\$37,456	\$0	\$238,323
Polk	\$94,213	\$0	\$8,531	\$64,530	\$23,824	\$708,940
Pope/Douglas	\$179,123	\$0	\$23,484	\$0	\$0	\$452,607
Ramsey	\$1,574,094	\$363,006	\$0	\$0	\$386,270	\$14,314,350
Red Lake	\$69,692	\$0	\$3,782	\$0	\$535	\$90,959
Redwood	\$69,692	\$0	\$41,580	\$159,100	\$52,913	\$909,538
Renville	\$69,692	\$0	\$85,914	\$1,966	\$12,359	\$384,931
Rice	\$193,784	\$0	\$24,552	\$324,715	\$96,788	\$1,649,236
Rock	\$69,692	\$0	\$0	\$0	\$0	\$133,059
Roseau	\$105,250	\$0	\$4,260	\$0	\$15,930	\$223,345
Scott	\$411,388	\$0	\$0	\$0	\$0	\$514,235
Sherburne	\$270,769	\$0	\$7,350	\$0	\$1,618	\$349,211
Sibley	\$69,692	\$833	\$2,382	\$0	\$14,280	\$217,661
St. Louis (partial)	\$282,969	\$0	\$22,637	\$314,024	\$88,417	\$1,454,307
Stearns	\$455,801	\$0	\$93,181	\$0	\$316,121	\$1,119,461
Steele	\$108,888	\$0	\$4,244	\$0	\$0	\$687,744
Stevens	\$69,692	\$0	\$0	\$0	\$109	\$233,186
Swift	\$69,692	\$0	\$2,400	\$57,350	\$0	\$433,981
Todd	\$72,611	\$0	\$4,460	\$72,133	\$0	\$570,888

County survey responses
Finances: Revenue (part 2)

County	SCORE pass-through	Grants	HHW funding	Material sales	Other	Total revenue
Traverse	\$69,692	\$0	\$0	\$0	\$0	\$115,939
Wabasha	\$69,692	\$0	\$1,588	\$0	\$1,350	\$89,502
Wadena	\$69,692	\$0	\$0	\$5,369	\$995,000	\$1,209,800
Waseca	\$69,692	\$0	\$4,752	\$157,374	\$1,408	\$433,726
Washington	\$742,138	\$228,040	\$0	\$0	\$201,238	\$4,674,522
Watonwan	\$69,692	\$0	\$2,896	\$0	\$9,408	\$269,132
WLSSD	\$315,946	\$10,018	\$205,598	\$130,622	\$282,677	\$2,887,733
Wilkin	\$69,692	\$0	\$0	\$91,660	\$0	\$293,933
Winona	\$152,973	\$0	\$46,086	\$0	\$13,970	\$1,306,442
Wright	\$385,656	\$4,931	\$15,059	\$6,012	\$1,985	\$530,758
Yellow Medicine	\$69,692	\$0	\$0	\$0	\$1,238	\$144,956
Metro Area	\$8,850,824	\$2,155,839	\$430,334	\$759,081	\$914,720	\$38,760,218
Greater Minn.	\$8,819,712	\$40,154	\$1,172,305	\$4,369,633	\$3,569,022	\$41,231,354
Total	\$17,670,536	\$2,195,993	\$1,602,639	\$5,128,714	\$4,483,743	\$79,991,572

County survey responses
Finances: Expenditures by program area (part 1)

County	Planning & Administration	Recycling	Organics	HHW & problem materials	Source reduction
Aitkin	\$184,983	\$86,337	\$610	\$15,535	\$1,836
Anoka	\$916,334	\$39,722	\$78,405	\$601,968	\$88,553
Becker	\$246,914	\$338,907	\$8,678	\$0	\$0
Beltrami	\$0	\$164,400	\$0	\$24,269	\$0
Benton	\$97,610	\$0	\$0	\$99,429	\$0
Big Stone	\$76,173	\$112,186	\$0	\$5,865	\$476
Blue Earth	\$86,410	\$176,560	\$0	\$94,250	\$500
Brown	\$56,675	\$351,688	\$0	\$72,468	\$0
Carlton	\$65,300	\$68,794	\$4,458	\$68,210	\$0
Carver	\$626,272	\$67,850	\$82,709	\$461,186	\$0
Cass	\$44,000	\$803,195	\$0	\$42,785	\$0
Chippewa	\$169,014	\$0	\$0	\$26,463	\$0
Chisago	\$210,534	\$50,000	\$3,241	\$193,566	\$0
Clay	\$160,235	\$454,176	\$14,318	\$119,614	\$0
Clearwater	\$25,822	\$35,325	\$1,974	\$39,782	\$0
Cook	\$241,615	\$62,717	\$0	\$9,614	\$0
Cottonwood	\$33,964	\$227,953	\$0	\$162	\$0
Crow Wing	\$215,462	\$16,177	\$29,089	\$162,748	\$0
Dakota	\$537,093	\$105,198	\$150,206	\$1,914,163	\$0
Dodge	\$51,279	\$291,377	\$28,716	\$15,393	\$28,716
Faribault	\$18,809	\$127,528	\$795	\$61,114	\$590
Fillmore	\$0	\$87,940	\$0	\$19,193	\$0
Freeborn	\$50,488	\$437,043	\$0	\$2,372	\$0
Goodhue	\$88,608	\$392,812	\$0	\$9,619	\$0
Grant	\$0	\$181,739	\$0	\$18,316	\$0
Hennepin	\$2,183,833	\$2,461,058	\$416,570	\$1,973,863	\$13,500
Houston	\$57,670	\$264,279	\$0	\$10,614	\$0
Hubbard	\$33,485	\$433,342	\$10,404	\$61,281	\$0
Isanti	\$52,201	\$50,400	\$0	\$8,515	\$0
Itasca	\$47,628	\$310,988	\$11,777	\$29,423	\$572
Jackson	\$34,204	\$4,657	\$547	\$139,896	\$0
Kanabec	\$3,387	\$41,257	\$0	\$6,085	\$0
Kandiyohi	\$307,213	\$555,171	\$0	\$132,573	\$0
Kittson	\$33,347	\$25,000	\$0	\$6,963	\$0
Koochiching	\$154,572	\$132,545	\$505	\$46,489	\$0
Lac qui Parle	\$29,468	\$78,795	\$165	\$20,780	\$0
Lake	\$47,647	\$157,406	\$5,285	\$32,895	\$0
Lake of the Woods	\$7,319	\$238,835	\$1,593	\$58,717	\$0

County survey responses
Finances: Expenditures by program area (part 1)

County	Planning & Administration	Recycling	Organics	HHW & problem materials	Source reduction
Le Sueur	\$77,500	\$66,218	\$0	\$72,800	\$8,500
Lincoln	\$48,507	\$219,138	\$0	\$17,992	\$0
Lyon	\$50,409	\$256,668	\$0	\$177,741	\$1,000
Mahnomen	\$61,663	\$5,878	\$0	\$10,743	\$0
Marshall	\$74,497	\$25,000	\$0	\$11,486	\$0
Martin	\$35,365	\$298,954	\$598	\$62,289	\$1,249
McLeod	\$928,935	\$2,262,117	\$0	\$161,159	\$0
Meeker	\$9,705	\$52,435	\$778	\$20,726	\$1,555
Mille Lacs	\$1,810	\$59,144	\$0	\$23,261	\$0
Morrison	\$33,509	\$134,777	\$37,115	\$270,317	\$0
Mower	\$88,099	\$513,195	\$0	\$63,548	\$0
Murray	\$61,660	\$37,302	\$0	\$1,219	\$0
Nicollet	\$69,300	\$106,181	\$0	\$50,744	\$16,585
Nobles	\$118,139	\$221,480	\$410	\$65,629	\$25,102
Norman	\$10,007	\$56,739	\$0	\$20,256	\$0
Olmsted	\$66,255	\$840,692	\$141,149	\$585,836	\$163,320
Otter Tail	\$827,038	\$553,498	\$3,420	\$196,925	\$6,360
Pennington	\$20,000	\$12,260	\$0	\$11,521	\$0
Pine	\$31,924	\$108,302	\$0	\$28,102	\$770
Pipestone	\$53,561	\$159,121	\$0	\$699	\$5,690
Polk	\$300,075	\$141,693	\$9,218	\$82,624	\$0
Pope/Douglas	\$213,337	\$122,285	\$42,352	\$24,498	\$0
Ramsey	\$2,037,733	\$1,484,298	\$959,367	\$1,493,113	\$0
Red Lake	\$23,644	\$60,332	\$0	\$6,958	\$0
Redwood	\$225,496	\$462,737	\$0	\$59,975	\$0
Renville	\$10,000	\$209,268	\$0	\$69,136	\$0
Rice	\$21,330	\$1,531,887	\$60,435	\$81,347	\$2,200
Rock	\$49,427	\$92,408	\$10,233	\$22,250	\$900
Roseau	\$18,826	\$72,000	\$0	\$23,205	\$0
Scott	\$62,348	\$5,706	\$28,936	\$130,262	\$27,493
Sherburne	\$18,908	\$0	\$0	\$103,463	\$0
Sibley	\$61,532	\$27,150	\$200	\$34,272	\$9,669
St. Louis (partial)	\$239,423	\$990,280	\$26,146	\$138,835	\$0
Stearns	\$132,303	\$83,289	\$18,976	\$320,729	\$18,976
Steele	\$52,593	\$617,471	\$0	\$6,076	\$0
Stevens	\$59,268	\$223,794	\$0	\$15,907	\$0
Swift	\$303,630	\$57,350	\$6,125	\$10,640	\$1,000

County survey responses
Finances: Expenditures by program area (part 1)

County	Planning & Administration	Recycling	Organics	HHW & problem materials	Source reduction
Todd	\$22,836	\$511,864	\$0	\$34,253	\$933
Traverse	\$98,336	\$33,346	\$0	\$7,977	\$0
Wabasha	\$0	\$85,165	\$0	\$15,580	\$0
Wadena	\$104,863	\$1,087,326	\$3,146	\$20,216	\$0
Waseca	\$99,529	\$231,400	\$2,042	\$0	\$0
Washington	\$346,014	\$0	\$42,730	\$1,193,704	\$0
Watonwan	\$1,000	\$195,560	\$0	\$25,529	\$0
WLSSD	\$1,713,295	\$345,459	\$118,552	\$464,459	\$0
Wilkin	\$35,984	\$170,512	\$0	\$31,438	\$2,500
Winona	\$160,605	\$837,629	\$0	\$217,333	\$0
Wright	\$89,195	\$5,015	\$22,906	\$120,762	\$0
Yellow Medicine	\$5,659	\$125,819	\$0	\$1,095	\$200
Metro Area	\$6,709,627	\$4,163,831	\$1,758,923	\$7,768,259	\$129,546
Greater Minn.	\$9,661,013	\$21,069,667	\$625,955	\$5,446,546	\$299,199
Total	\$16,370,641	\$25,233,498	\$2,384,878	\$13,214,805	\$428,745

County survey responses
Finances: Expenditures by program area (part 2)

County	Education	Market development	Litter prevention	Grant to other LGUs	WTE Processing
Aitkin	\$7,280	\$0	\$0	\$0	\$0
Anoka	\$123,156	\$0	\$0	\$1,528,887	\$0
Becker	\$4,488	\$0	\$6,000	\$47,055	\$465,370
Beltrami	\$3,443	\$0	\$0	\$0	\$0
Benton	\$17,768	\$0	\$0	\$137,154	\$0
Big Stone	\$633	\$0	\$0	\$0	\$0
Blue Earth	\$35,890	\$0	\$1,500	\$0	\$0
Brown	\$1,123	\$0	\$0	\$0	\$0
Carlton	\$3,171	\$0	\$0	\$29,000	\$0
Carver	\$25,370	\$0	\$17,790	\$88,636	\$0
Cass	\$0	\$0	\$0	\$0	\$0
Chippewa	\$0	\$0	\$0	\$0	\$0
Chisago	\$26,904	\$0	\$0	\$0	\$0
Clay	\$27,547	\$0	\$6,248	\$0	\$0
Clearwater	\$1,625	\$0	\$0	\$0	\$75,440
Cook	\$867	\$0	\$0	\$0	\$0
Cottonwood	\$12,904	\$0	\$0	\$0	\$0
Crow Wing	\$21,961	\$0	\$0	\$334,743	\$0
Dakota	\$176,803	\$0	\$0	\$431,931	\$0
Dodge	\$50,096	\$900	\$0	\$0	\$0
Faribault	\$4,685	\$0	\$1,959	\$142,658	\$1,985
Fillmore	\$0	\$0	\$0	\$0	\$0
Freeborn	\$9,499	\$2,085	\$0	\$0	\$0
Goodhue	\$0	\$0	\$0	\$0	\$0
Grant	\$3,006	\$0	\$0	\$0	\$0
Hennepin	\$765,024	\$0	\$0	\$3,681,736	\$0
Houston	\$0	\$0	\$0	\$0	\$0
Hubbard	\$6,562	\$0	\$362	\$0	\$0
Isanti	\$0	\$0	\$0	\$3,440	\$0
Itasca	\$1,696	\$0	\$2,469	\$0	\$0
Jackson	\$3,465	\$0	\$0	\$0	\$0
Kanabec	\$2,165	\$0	\$0	\$0	\$0
Kandiyohi	\$0	\$0	\$0	\$0	\$0
Kittson	\$257	\$0	\$0	\$0	\$0
Koochiching	\$927	\$0	\$19	\$0	\$0
Lac qui Parle	\$1,579	\$0	\$0	\$0	\$0
Lake	\$0	\$0	\$0	\$0	\$0
Lake of the Woods	\$18	\$0	\$0	\$0	\$0

County survey responses
Finances: Expenditures by program area (part 2)

County	Education	Market development	Litter prevention	Grant to other LGUs	WTE Processing
Le Sueur	\$38,400	\$17,880	\$0	\$28,000	\$0
Lincoln	\$1,225	\$0	\$0	\$0	\$0
Lyon	\$32,707	\$0	\$0	\$0	\$0
Mahnomen	\$1,039	\$0	\$0	\$0	\$0
Marshall	\$824	\$0	\$0	\$0	\$0
Martin	\$4,667	\$0	\$2,465	\$168,898	\$0
McLeod	\$17,118	\$0	\$3,559	\$35,546	\$0
Meeker	\$3,818	\$0	\$0	\$11,155	\$0
Mille Lacs	\$7,807	\$0	\$0	\$0	\$0
Morrison	\$1,039	\$0	\$0	\$53,706	\$0
Mower	\$7,819	\$0	\$0	\$0	\$0
Murray	\$7,746	\$0	\$0	\$0	\$0
Nicollet	\$36,000	\$17,300	\$0	\$115,932	\$0
Nobles	\$3,329	\$0	\$0	\$0	\$0
Norman	\$1,134	\$0	\$0	\$0	\$0
Olmsted	\$127,671	\$0	\$0	\$0	\$0
Otter Tail	\$79,451	\$0	\$2,645	\$0	\$0
Pennington	\$0	\$0	\$0	\$0	\$0
Pine	\$450	\$0	\$0	\$0	\$0
Pipestone	\$4,886	\$0	\$741	\$0	\$0
Polk	\$10,766	\$0	\$0	\$15,000	\$0
Pope/Douglas	\$49,727	\$0	\$0	\$0	\$0
Ramsey	\$893,637	\$0	\$0	\$1,357,978	\$6,132,000
Red Lake	\$25	\$0	\$0	\$0	\$0
Redwood	\$3,745	\$0	\$0	\$215,057	\$0
Renville	\$5,000	\$0	\$43,646	\$0	\$0
Rice	\$21,777	\$7,128	\$6,729	\$0	\$0
Rock	\$1,000	\$0	\$1,000	\$0	\$0
Roseau	\$0	\$0	\$0	\$0	\$0
Scott	\$112,681	\$0	\$0	\$0	\$0
Sherburne	\$32,694	\$0	\$0	\$148,300	\$0
Sibley	\$24,680	\$12,650	\$4,669	\$42,430	\$0
St. Louis (partial)	\$59,623	\$0	\$0	\$0	\$0
Stearns	\$80,813	\$32,758	\$32,758	\$193,071	\$0
Steele	\$9,804	\$1,800	\$0	\$0	\$0
Stevens	\$1,934	\$0	\$0	\$0	\$0
Swift	\$7,100	\$0	\$0	\$0	\$0

County survey responses
Finances: Expenditures by program area (part 2)

County	Education	Market development	Litter prevention	Grant to other LGUs	WTE Processing
Todd	\$1,002	\$0	\$0	\$0	\$0
Traverse	\$528	\$0	\$0	\$2,000	\$0
Wabasha	\$1,194	\$0	\$0	\$0	\$15,509
Wadena	\$2,101	\$0	\$0	\$0	\$0
Waseca	\$0	\$0	\$0	\$0	\$0
Washington	\$377,484	\$0	\$0	\$490,377	\$2,268,000
Watonwan	\$1,340	\$0	\$0	\$0	\$0
WLSSD	\$146,608	\$0	\$0	\$99,361	\$0
Wilkin	\$1,105	\$0	\$0	\$0	\$0
Winona	\$57,646	\$0	\$0	\$0	\$0
Wright	\$1,396	\$0	\$0	\$194,435	\$0
Yellow Medicine	\$3,751	\$0	\$0	\$0	\$0
Metro Area	\$2,474,156	\$0	\$17,790	\$7,579,545	\$8,400,000
Greater Minn.	\$1,152,050	\$92,501	\$116,768	\$2,016,941	\$558,304
Total	\$3,626,206	\$92,501	\$134,558	\$9,596,485	\$8,958,304

County survey responses
Finances: Balance sheet

County	Balance carry-over from 2014	Total revenues	Total expenditures	Balance
Aitkin	\$259,710	\$271,697	\$296,581	\$234,826
Anoka	\$0	\$3,377,024	\$3,377,024	\$0
Becker	-\$353	\$720,034	\$1,117,413	-\$397,732
Beltrami	\$0	\$192,112	\$192,112	\$0
Benton	-\$13,425	\$365,386	\$351,961	\$0
Big Stone	-\$5,924	\$191,885	\$195,333	-\$9,372
Blue Earth	\$0	\$395,110	\$395,110	\$0
Brown	-\$4,521	\$497,604	\$481,954	\$11,129
Carlton	-\$25,050	\$209,562	\$238,933	-\$54,421
Carver	\$0	\$1,369,813	\$1,369,813	\$0
Cass	\$0	\$889,980	\$889,980	\$0
Chippewa	\$0	\$195,478	\$195,478	\$0
Chisago	\$0	\$484,246	\$484,246	\$0
Clay	\$4,571	\$776,670	\$782,138	-\$897
Clearwater	\$0	\$179,968	\$179,968	\$0
Cook	\$0	\$314,813	\$314,813	\$0
Cottonwood	\$135,519	\$305,706	\$274,983	\$166,242
Crow Wing	\$0	\$780,180	\$780,180	\$0
Dakota	\$300,704	\$3,014,690	\$3,315,394	\$0
Dodge	-\$30,422	\$466,441	\$466,477	-\$30,458
Faribault	\$149,945	\$410,175	\$360,123	\$199,997
Fillmore	\$4,876	\$82,239	\$107,134	-\$20,019
Freeborn	\$0	\$499,827	\$501,487	-\$1,660
Goodhue	-\$75,048	\$367,130	\$491,039	-\$198,957
Grant	\$23,152	\$280,633	\$203,061	\$100,724
Hennepin	\$0	\$11,495,584	\$11,495,584	\$0
Houston	\$0	\$332,563	\$332,563	\$0
Hubbard	\$0	\$545,435	\$545,435	\$0
Isanti	\$133,474	\$144,334	\$114,556	\$163,252
Itasca	\$0	\$404,553	\$404,553	\$0
Jackson	\$231,902	\$93,679	\$182,768	\$142,814
Kanabec	\$136,899	\$87,783	\$52,894	\$171,788
Kandiyohi	\$0	\$994,957	\$994,957	\$0
Kittson	-\$14,196	\$17,914	\$65,566	-\$61,848
Koochiching	\$0	\$335,056	\$335,056	\$0
Lac qui Parle	\$284,472	-\$153,684	\$130,788	\$0
Lake	\$0	\$123,757	\$243,233	-\$119,476
Lake of the Woods	\$0	\$306,482	\$306,482	\$0

County survey responses
Finances: Balance sheet

County	Balance carry-over from 2014	Total revenues	Total expenditures	Balance
Le Sueur	\$0	\$309,298	\$309,298	\$0
Lincoln	\$10,389	\$285,997	\$286,862	\$9,525
Lyon	\$0	\$518,526	\$518,526	\$0
Mahnomen	\$29,128	\$92,370	\$79,323	\$42,175
Marshall	\$0	\$108,121	\$111,807	-\$3,686
Martin	\$476,607	\$748,687	\$574,485	\$650,809
McLeod	\$0	\$3,408,433	\$3,408,433	\$0
Meeker	\$16,040	\$92,591	\$100,172	\$8,459
Mille Lacs	\$132,267	\$103,417	\$92,022	\$143,662
Morrison	\$0	\$526,502	\$530,463	-\$3,961
Mower	-\$8,628	\$582,772	\$672,661	-\$98,517
Murray	-\$35,448	\$122,905	\$107,927	-\$20,470
Nicollet	\$10,533	\$412,042	\$412,042	\$10,533
Nobles	\$72,533	\$428,414	\$434,089	\$66,858
Norman	\$30,873	\$90,168	\$88,136	\$32,905
Olmsted	-\$1,192,371	\$2,313,222	\$1,924,923	-\$804,072
Otter Tail	\$0	\$1,669,338	\$1,669,338	\$0
Pennington	\$241,612	\$0	\$43,781	\$197,831
Pine	\$0	\$169,547	\$169,547	\$0
Pipestone	\$69,635	\$238,323	\$224,698	\$83,260
Polk	\$411,019	\$708,940	\$559,375	\$560,585
Pope/Douglas	\$26,406	\$452,607	\$452,199	\$26,814
Ramsey	\$808,935	\$14,314,350	\$14,358,126	\$765,159
Red Lake	\$0	\$90,959	\$90,959	\$0
Redwood	\$636,880	\$909,538	\$967,010	\$579,409
Renville	\$87,468	\$384,931	\$337,050	\$135,349
Rice	\$379,436	\$1,649,236	\$1,732,833	\$295,838
Rock	-\$42,023	\$133,059	\$177,218	-\$86,181
Roseau	-\$97,905	\$223,345	\$114,031	\$11,409
Scott	\$949,020	\$514,235	\$367,426	\$1,095,828
Sherburne	\$277,090	\$349,211	\$303,365	\$322,936
Sibley	-\$409	\$217,661	\$217,252	\$0
St. Louis (partial)	\$0	\$1,454,307	\$1,454,307	\$0
Stearns	\$231,159	\$1,119,461	\$913,673	\$436,947
Steele	\$0	\$687,744	\$687,744	\$0
Stevens	\$6,921	\$233,186	\$300,903	-\$60,795
Swift	-\$165,154	\$433,981	\$385,845	-\$117,018

County survey responses
Finances: Balance sheet

County	Balance carry-over from 2014	Total revenues	Total expenditures	Balance
Todd	\$0	\$570,888	\$570,888	\$0
Traverse	-\$28,824	\$115,939	\$142,187	-\$55,072
Wabasha	-\$16,872	\$89,502	\$117,448	-\$44,818
Wadena	\$7,853	\$1,209,800	\$1,217,653	\$0
Waseca	-\$200,500	\$433,726	\$332,971	-\$99,745
Washington	\$0	\$4,674,522	\$4,718,309	-\$43,787
Watonwan	\$421,767	\$269,132	\$223,429	\$467,470
WLSSD	\$0	\$2,887,733	\$2,887,733	\$0
Wilkin	-\$52,394	\$293,933	\$241,539	\$0
Winona	-\$201,695	\$1,306,442	\$1,273,213	-\$168,466
Wright	\$969,979	\$530,758	\$433,709	\$1,067,028
Yellow Medicine	\$1,804	\$144,956	\$136,523	\$10,236
Metro Area	\$2,058,659	\$38,760,218	\$39,001,677	\$1,817,200
Greater Minn.	\$3,700,759	\$41,231,354	\$41,038,943	\$3,893,170
Total	\$5,759,418	\$79,991,572	\$80,040,620	\$5,710,370

County survey responses
Paper collected for recycling (tons)

County	Cardboard	Magazine /Catalog	Mixed Paper	Newspaper	Office Paper	Other Paper	Phone Books	Total Paper
Aitkin	614	0	737	0	0	0	0	1,351
Anoka	62,045	1,548	18,881	9,798	1,260	5,431	6	98,969
Becker	2,807	37	935	1,272	64	0	3	5,117
Beltrami	2,853	0	1,530	0	54	0	0	4,437
Benton	1,388	116	182	668	171	5	2	2,532
Big Stone	70	0	311	0	14	0	0	394
Blue Earth	10,960	1,645	5,515	318	235	0	0	18,673
Brown	3,557	0	1	1,177	3,815	4,750	0	13,300
Carlton	2,215	245	423	588	148	0	0	3,618
Carver	7,135	0	14,594	3,235	67	0	0	25,032
Cass	6,829	0	860	977	179	0	0	8,846
Chippewa	1,069	6	12	206	2	0	0	1,296
Chisago	2,170	0	0	1,933	249	0	0	4,353
Clay	0	108	537	867	353	2,580	0	4,445
Clearwater	76	0	17	0	0	0	0	93
Cook	512	74	38	60	0	0	0	684
Cottonwood	566	0	190	203	0	0	0	959
Crow Wing	5,671	0	6,472	282	4	0	0	12,429
Dakota	23,465	0	36,493	14,590	0	0	0	74,548
Dodge	770	15	1,067	0	59	0	0	1,911
Faribault	1,819	0	2,077	0	1	0	0	3,897
Fillmore	432	0	1,963	0	0	0	0	2,396
Freeborn	6,076	7	746	903	0	0	0	7,732
Goodhue	3,762	0	579	1,740	0	0	0	6,081
Grant	179	22	0	63	38	0	0	302
Hennepin	70,073	2,366	45,161	33,579	9,688	0	0	160,867
Houston	507	0	400	124	0	0	0	1,030
Hubbard	2,039	0	3	365	100	0	0	2,508
Isanti	1,925	10	42	1,119	8	0	0	3,105
Itasca	3,207	0	484	1,121	214	0	0	5,026
Jackson	1,238	0	553	0	0	0	0	1,791
Kanabec	617	0	4	188	72	0	0	881
Kandiyohi	3,836	195	315	535	66	26	16	4,989
Kittson	130	69	0	85	19	0	1	304
Koochiching	3,302	0	831	74	36	0	0	4,243
Lac qui Parle	577	0	0	460	15	0	0	1,052
Lake	710	50	12	116	12	89	0	990
Lake of the Woods	26	0	0	0	0	0	0	26

County survey responses
Paper collected for recycling (tons)

County	Cardboard	Magazine /Catalog	Mixed Paper	Newspaper	Office Paper	Other Paper	Phone Books	Total Paper
Le Sueur	1,364	0	1,363	18	25	0	6	2,775
Lincoln	216	0	279	0	0	0	0	495
Lyon	1,699	0	632	0	747	0	0	3,079
Mahnomen	169	1	57	0	0	0	0	226
Marshall	135	43	16	81	5	0	2	282
Martin	1,969	0	2,505	0	1	0	0	4,475
McLeod	4,477	0	6	2,625	3	88	0	7,199
Meeker	2,172	0	363	448	59	0	0	3,042
Mille Lacs	643	0	408	0	2	0	0	1,053
Morrison	2,848	1,226	0	6,938	910	0	0	11,922
Mower	12,857	0	937	646	57	0	0	14,497
Murray	622	33	64	745	140	0	0	1,604
Nicollet	3,360	432	5,531	562	2,709	0	0	12,594
Nobles	2,927	0	556	836	201	0	0	4,520
Norman	39	0	5	0	0	0	0	44
Olmsted	13,616	64	6,841	3,263	1,640	0	0	25,424
Otter Tail	5,185	139	153	763	0	1	0	6,242
Pennington	1,824	43	0	191	152	0	0	2,209
Pine	1,165	4	2	377	261	176	0	1,985
Pipestone	780	0	301	66	36	0	0	1,183
Polk	963	0	355	0	0	0	0	1,319
Pope/Douglas	4,671	0	1,140	1,001	23	13	0	6,848
Ramsey	7,092	1,613	6,346	17,115	25	2	346	32,539
Red Lake	77	7	0	57	2	0	0	143
Redwood	1,871	59	253	251	257	0	0	2,691
Renville	398	0	925	0	0	0	0	1,323
Rice	15,378	0	1,723	1,254	0	0	0	18,356
Rock	459	0	90	208	0	0	0	756
Roseau	2,030	106	0	130	81	0	0	2,347
Scott	17,020	74	18,528	126	836	888	0	37,472
Sherburne	969	0	8,265	0	0	63	0	9,298
Sibley	186	0	267	90	119	0	0	663
St. Louis - partial	5,474	11	1,643	247	519	0	0	7,895
Stearns	11,404	7,513	2,004	2,858	1,225	0	9	25,013
Steele	1,734	0	1,029	1,100	1,931	0	0	5,795
Stevens	621	0	220	242	0	0	0	1,083
Swift	702	65	0	547	165	0	0	1,479
Todd	1,450	0	6,378	0	0	0	0	7,828

County survey responses
Paper collected for recycling (tons)

County	Cardboard	Magazine /Catalog	Mixed Paper	Newspaper	Office Paper	Other Paper	Phone Books	Total Paper
Traverse	125	9	0	51	0	0	16	201
Wabasha	431	0	633	160	0	0	0	1,224
Wadena	1,219	0	152	0	2	0	0	1,374
Waseca	3,791	93	2,409	121	589	22,770	4	29,777
Washington	9,022	0	6,625	7,071	82	0	0	22,800
Watonwan	3,210	0	321	834	2	0	0	4,368
Wilkin	433	10	0	85	8	0	0	536
Winona	9,433	0	5,874	80	0	0	0	15,387
WLSSD	13,339	694	0	5,451	937	564	0	20,985
Wright	2,947	3	4,748	639	0	0	0	8,337
Yellow Medicine	376	19	84	121	103	0	0	702
Metro Area	195,852	5,601	146,628	85,514	11,958	6,321	352	452,227
Greater Minn.	214,272	13,172	85,368	48,528	18,841	31,126	59	411,367
Minnesota	410,124	18,773	231,996	134,043	30,799	37,446	412	863,594

County survey responses
Metal collected for recycling (tons)

County	Aluminum	Ferrous Metals	Non Ferrous Metal	Total Metal
Aitkin	74	351	0	424
Anoka	2,517	37,124	8,554	48,195
Becker	409	1,243	11	1,663
Beltrami	81	978	105	1,164
Benton	844	6,558	6,223	13,625
Big Stone	11	144	0	155
Blue Earth	3,170	7,911	247	11,328
Brown	170	14,585	1,869	16,623
Carlton	151	293	254	698
Carver	218	2,745	468	3,432
Cass	169	88	0	257
Chippewa	29	29	25	83
Chisago	69	506	7	582
Clay	156	3,060	0	3,216
Clearwater	25	215	0	240
Cook	15	0	27	42
Cottonwood	14	19	0	32
Crow Wing	133	24,177	0	24,311
Dakota	2,120	1,915	4,604	8,640
Dodge	34	483	0	517
Faribault	299	162	122	583
Fillmore	0	566	26	591
Freeborn	433	1,798	0	2,231
Goodhue	236	3,094	0	3,330
Grant	10	1	14	26
Hennepin	0	49,105	7,080	56,185
Houston	70	1,555	278	1,903
Hubbard	242	738	66	1,046
Isanti	699	0	1,758	2,457
Itasca	135	3,076	25	3,236
Jackson	27	7,573	80	7,680
Kanabec	8	74	80	162
Kandiyohi	340	85	0	425
Kittson	49	1,631	11	1,691
Koochiching	37	666	89	792
Lac qui Parle	83	0	0	83
Lake	27	0	30	57
Lake of the Woods	1	182	0	183
Le Sueur	21	1,979	860	2,860
Lincoln	68	0	12	80

County survey responses
Metal collected for recycling (tons)

County	Aluminum	Ferrous Metals	Non Ferrous Metal	Total Metal
Lyon	285	200	9,908	10,393
Mahnomen	8	54	0	62
Marshall	123	601	59	783
Martin	1,652	812	0	2,464
McLeod	71	929	0	1,000
Meeker	0	624	364	988
Mille Lacs	78	0	0	78
Morrison	17	3,775	60	3,852
Mower	141	108	0	249
Murray	70	0	73	143
Nicollet	433	2,201	86	2,720
Nobles	39	58	0	97
Norman	25	89	0	114
Olmsted	364	14,091	2,134	16,588
Otter Tail	216	27,753	116	28,085
Pennington	3	5,036	250	5,290
Pine	67	3,036	49	3,151
Pipestone	8	54	47	109
Polk	190	3,249	53	3,493
Pope/Douglas	208	33,082	3,318	36,609
Ramsey	602	12,060	652	13,313
Red Lake	2	2	0	4
Redwood	462	559	0	1,021
Renville	30	71	0	101
Rice	239	8,287	256	8,783
Rock	22	597	10	629
Roseau	142	2,773	0	2,915
Scott	316	8,769	17,367	26,453
Sherburne	0	11,431	1,801	13,232
Sibley	149	2,213	44	2,406
St. Louis	729	27,873	8,740	37,342
Stearns	2,448	29,236	696	32,380
Steele	112	3,441	0	3,553
Stevens	26	159	10	195
Swift	117	0	148	265
Todd	18	360	0	378
Traverse	12	0	0	12
Wabasha	39	46	0	85
Wadena	186	2,555	297	3,038
Waseca	146	1,079	357	1,582

County survey responses
Metal collected for recycling (tons)

County	Aluminum	Ferrous Metals	Non Ferrous Metal	Total Metal
Washington	480	1,202	0	1,682
Watonwan	18	0	27	45
Wilkin	39	5	0	44
Winona	418	2,873	0	3,291
WLSSD	588	11,792	0	12,381
Wright	197	669	175	1,041
Yellow Medicine	2	0	96	98
Metro Area	6,253	112,921	38,725	157,899
Greater Minn.	18,478	285,594	41,392	345,464
Total	24,731	398,514	80,118	503,363

County survey responses
Glass collected for recycling

County	Food and Beverage Glass	Other Glass	Total Glass
Aitkin	276	0	276
Anoka	8,488	0	8,488
Becker	477	0	477
Beltrami	534	0	534
Benton	1,335	0	1,335
Big Stone	102	0	102
Blue Earth	509	0	509
Brown	493	0	493
Carlton	713	0	713
Carver	2,080	0	2,080
Cass	236	0	236
Chippewa	16	0	16
Chisago	948	0	948
Clay	508	0	508
Clearwater	24	0	24
Cook	207	0	207
Cottonwood	129	0	129
Crow Wing	1,243	0	1,243
Dakota	10,767	0	10,767
Dodge	383	319	702
Faribault	233	0	233
Fillmore	455	0	455
Freeborn	507	0	507
Goodhue	947	0	947
Grant	86	0	86
Hennepin	22,402	0	22,402
Houston	320	0	320
Hubbard	429	0	429
Isanti	405	0	405
Itasca	482	0	482
Jackson	185	0	185
Kanabec	63	0	63
Kandiyohi	351	0	351
Kittson	1	0	1
Koochiching	95	0	95
Lac qui Parle	69	0	69
Lake	356	0	356
Lake of the Woods	15	0	15
Le Sueur	215	0	215

**County survey responses
Glass collected for recycling**

County	Food and Beverage Glass	Other Glass	Total Glass
Lincoln	53	0	53
Lyon	427	0	427
Mahnomen	19	0	19
Marshall	1	0	1
Martin	233	0	233
McLeod	1,126	0	1,126
Meeker	338	0	338
Mille Lacs	244	0	244
Morrison	2,194	0	2,194
Mower	328	0	328
Murray	170	0	170
Nicollet	294	0	294
Nobles	359	0	359
Norman	58	0	58
Olmsted	2,377	0	2,377
Otter Tail	732	0	732
Pennington	45	0	45
Pine	388	0	388
Pipestone	199	0	199
Polk	136	0	136
Pope/Douglas	768	0	768
Ramsey	9,077	0	9,077
Red Lake	15	0	15
Redwood	190	0	190
Renville	171	0	171
Rice	1,856	1,753	3,609
Rock	121	0	121
Roseau	0	1,326	1,326
Scott	2,443	0	2,443
Sherburne	1,703	0	1,703
Sibley	89	0	89
St. Louis	830	0	830
Stearns	5,433	0	5,433
Steele	697	23,946	24,643
Stevens	133	0	133
Swift	341	0	341
Todd	248	0	248
Traverse	35	0	35
Wabasha	281	0	281
Wadena	186	0	186

**County survey responses
Glass collected for recycling**

County	Food and Beverage Glass	Other Glass	Total Glass
Waseca	243	0	243
Washington	4,478	0	4,478
Watonwan	170	0	170
Wilkin	35	0	35
Winona	821	0	821
WLSSD	2,807	0	2,807
Wright	1,861	0	1,861
Yellow Medicine	122	0	122
Metro Area	59,735	0	59,735
Greater Minn.	42,218	27,344	69,562
Total	101,953	27,344	129,298

County survey responses
Plastic collected for recycling (tons)

County	Film Plastic	HDPE	Mixed Plastic	Other Plastic	PET	Polystyrene	Total Plastic
Aitkin	0	0	102	150	0	0	252
Anoka	450	314	2,331	39	257	15	3,406
Becker	33	0	206	0	0	0	238
Beltrami	0	84	0	0	0	0	84
Benton	27	569	134	0	70	0	799
Big Stone	0	0	0	0	28	0	28
Blue Earth	937	1	238	0	1	0	1,177
Brown	855	0	4	14	120	0	993
Carlton	59	0	267	0	0	0	326
Carver	64	32	1,180	0	3	0	1,279
Cass	0	2	62	0	63	0	127
Chippewa	62	0	175	0	1	39	276
Chisago	0	186	0	31	93	0	309
Clay	0	0	218	0	0	0	218
Clearwater	0	0	14	0	0	0	14
Cook	0	0	41	0	0	0	41
Cottonwood	0	0	34	0	0	0	34
Crow Wing	0	0	567	0	0	0	567
Dakota	234	1	2,808	0	0	0	3,043
Dodge	8	0	0	159	0	88	255
Faribault	10	78	0	2	53	0	143
Fillmore	0	0	120	0	0	0	120
Freeborn	0	0	2,337	0	0	0	2,337
Goodhue	25	191	0	0	306	0	522
Grant	0	0	0	0	31	0	31
Hennepin	0	0	15,652	0	0	0	15,652
Houston	0	0	83	0	0	0	83
Hubbard	24	0	0	127	1	0	152
Isanti	30	3	0	7	193	0	233
Itasca	77	25	162	0	30	0	293
Jackson	0	0	0	0	46	0	46
Kanabec	0	0	80	0	0	0	80
Kandiyohi	8	107	0	10	148	0	273
Kittson	0	11	0	0	11	0	23
Koochiching	7	20	0	0	17	0	43
Lac qui Parle	0	35	0	11	28	0	73
Lake	0	30	0	0	35	0	66
Lake of the Woods	0	0	0	0	0	0	0
Le Sueur	16	0	324	0	0	0	340

County survey responses
Plastic collected for recycling (tons)

County	Film Plastic	HDPE	Mixed Plastic	Other Plastic	PET	Polystyrene	Total Plastic
Lincoln	0	21	0	0	10	0	31
Lyon	39	0	118	0	68	0	225
Mahnomen	0	0	0	0	9	0	9
Marshall	11	12	0	0	12	0	35
Martin	15	519	0	2	369	0	905
McLeod	4,162	0	611	6	5	0	4,784
Meeker	0	0	0	189	0	0	189
Mille Lacs	14	0	0	102	0	0	117
Morrison	134	0	0	0	1,588	0	1,721
Mower	19	147	0	0	68	0	234
Murray	0	25	80	0	0	0	105
Nicollet	191	0	598	106	107	0	1,002
Nobles	104	7	99	0	1	0	211
Norman	0	0	0	25	0	0	25
Olmsted	255	78	489	58	62	229	1,170
Otter Tail	202	134	120	0	163	0	620
Pennington	49	15	0	0	23	0	87
Pine	27	20	66	4	17	0	134
Pipestone	258	44	0	0	46	0	349
Polk	8	0	0	0	57	0	65
Pope/Douglas	35	0	108	7	1	0	152
Ramsey	90	553	1,247	0	849	0	2,739
Red Lake	0	0	0	0	4	0	4
Redwood	131	80	95	0	49	0	355
Renville	0	0	37	0	0	0	37
Rice	19	215	62	0	293	0	590
Rock	0	3	52	0	0	0	54
Roseau	0	0	342	0	53	0	395
Scott	0	236	96	964	1,075	0	2,371
Sherburne	0	0	682	0	0	0	682
Sibley	0	0	63	12	19	0	94
St. Louis	29	392	0	0	459	5	885
Stearns	188	2,262	597	0	309	0	3,356
Steele	64	9	362	0	10	11	456
Stevens	0	0	73	0	0	0	73
Swift	0	74	0	0	91	0	165
Todd	0	19	0	0	14	0	33
Traverse	0	0	0	0	17	0	17

County survey responses
Plastic collected for recycling (tons)

County	Film Plastic	HDPE	Mixed Plastic	Other Plastic	PET	Polystyrene	Total Plastic
Wabasha	0	0	0	0	51	0	51
Wadena	45	0	223	5	1	0	274
Waseca	0	31	184	0	52	0	267
Washington	0	0	0	1,343	0	0	1,343
Watonwan	0	0	0	104	0	0	104
Wilkin	0	0	0	0	11	0	11
Winona	0	149	0	45	90	171	456
WLSSD	169	251	339	21	389	0	1,169
Wright	64	0	597	0	2	0	664
Yellow Medicine	0	0	83	0	0	0	83
Metro Area	837	1,136	23,314	2,345	2,184	15	29,831
Greater Minn.	8,410	5,850	11,247	1,197	5,793	542	33,040
Total	9,248	6,986	34,560	3,543	7,976	558	62,871

County survey responses
Organics collected for recycling (tons)

County	Food to Livestock	Food to People	Source Separated Composting	Yard Waste Composting	Other Organics	Total Organics
Aitkin	0	0	0	21	0	21
Anoka	10,218	515	609	22,712	96	34,150
Becker	0	50	75	600	1,559	2,284
Beltrami	0	0	172	200	0	372
Benton	66	31	417	0	0	514
Big Stone	0	0	123	0	0	123
Blue Earth	0	143	3,569	3,355	0	7,066
Brown	2,546	0	0	0	0	2,546
Carlton	0	82	227	0	0	309
Carver	8,612	103	27	9,434	0	18,176
Cass	0	0	0	0	40	40
Chippewa	86	37	13	0	0	136
Chisago	261	0	0	2,625	0	2,886
Clay	0	207	0	325	0	532
Clearwater	0	0	0	14	0	14
Cook	0	0	0	30	0	30
Cottonwood	0	0	0	10	0	10
Crow Wing	0	147	106	2,943	798	3,993
Dakota	16,430	2,981	12,845	47,372	0	79,629
Dodge	0	0	8	0	0	8
Faribault	0	0	0	4	0	4
Fillmore	0	0	0	400	0	400
Freeborn	0	0	1,424	1,766	0	3,190
Goodhue	0	0	0	1,574	0	1,574
Grant	0	0	0	0	0	0
Hennepin	23,820	0	17,889	0	0	41,709
Houston	0	0	0	820	0	820
Hubbard	0	70	0	50	42	162
Isanti	0	188	0	0	88	276
Itasca	0	104	0	285	0	389
Jackson	38	75	0	0	0	113
Kanabec	0	0	0	349	0	349
Kandiyohi	0	136	0	0	120	255
Kittson	0	0	0	35	0	35
Koochiching	0	0	0	100	0	100
Lac qui Parle	0	0	0	0	0	0
Lake	0	0	0	6	0	6
Lake of the Woods	0	0	0	56	99	156

County survey responses
Organics collected for recycling (tons)

County	Food to Livestock	Food to People	Source Separated Composting	Yard Waste Composting	Other Organics	Total Organics
Le Sueur	4,100	0	0	0	0	4,100
Lincoln	18	0	0	0	0	18
Lyon	0	337	62	0	171	571
Mahnomen	0	0	0	0	323	323
Marshall	0	0	0	80	0	80
Martin	0	0	0	69	0	69
McLeod	0	71	1,896	4,366	0	6,333
Meeker	0	52	0	0	164	216
Mille Lacs	0	0	0	0	90	90
Morrison	0	0	0	12,882	0	12,882
Mower	0	0	0	780	0	780
Murray	0	0	29	0	0	29
Nicollet	0	0	0	57	0	57
Nobles	105	214	93	0	0	412
Norman	0	0	0	0	0	0
Olmsted	78,470	155	605	0	0	79,231
Otter Tail	19,151	443	0	0	0	19,594
Pennington	0	0	0	180	0	180
Pine	402	135	0	0	64	601
Pipestone	72	0	0	1	0	73
Polk	500	0	1,221	128	169	2,019
Pope/Douglas	0	369	92	1,424	54	1,938
Ramsey	41,697	2,161	5,493	42,791	34,194	126,337
Red Lake	0	0	0	0	0	0
Redwood	85	427	0	0	0	512
Renville	100	0	0	0	0	100
Rice	21,572	0	489	8,355	0	30,416
Rock	0	0	0	0	0	0
Roseau	0	0	0	0	0	0
Scott	0	0	572	13,020	0	13,592
Sherburne	450	129	11,475	7,729	4	19,787
Sibley	3,005	0	0	0	0	3,005
St. Louis	28	115	0	475	0	617
Stearns	261	252	641	0	0	1,154
Steele	0	0	10	0	0	10
Stevens	0	0	46	573	0	619
Swift	0	0	2,306	0	0	2,306
Todd	0	0	0	280	0	280

**County survey responses
Organics collected for recycling (tons)**

County	Food to Livestock	Food to People	Source Separated Composting	Yard Waste Composting	Other Organics	Total Organics
Traverse	0	0	0	2	0	2
Wabasha	0	0	0	0	0	0
Wadena	0	188	0	15	67	269
Waseca	0	45	0	3	0	48
Washington	14,500	1,390	9	11,209	1,046	28,154
Watsonwan	0	0	0	0	0	0
Wilkin	0	0	0	0	0	0
Winona	8,523	0	0	0	0	8,523
WLSSD	50	693	2,730	1,727	0	5,199
Wright	32	135	154	1,120	875	2,316
Yellow Medicine	0	0	0	1	0	1
Metro Area	115,277	7,150	37,443	146,539	35,336	341,745
Greater Minn.	139,920	5,029	27,982	55,814	4,728	247,483
Total	255,197	12,179	65,426	202,352	40,065	575,218

County survey responses
Problem materials (banned) collected for recycling (tons)

County	Antifreeze	Electronic devices	Fluorescent & HID Lamps	Latex Paint	Major appliances	Oil Filters	Used Oil	Vehicle Batteries	Waste tires	Total Banned
Aitkin	2	29	2	4	97	8	110	99	32	385
Anoka	10	561	24	1	595	33	238	129	211	1,801
Becker	2	161	8	34	0	15	256	84	348	907
Beltrami	0	200	4	15	932	4	36	20	191	1,402
Benton	0	19	1	4	25	0	2	3	59	112
Big Stone	0	5	1	0	13	4	58	12	27	122
Blue Earth	17	0	26	21	362	15	622	456	1,204	2,723
Brown	1	131	0	1	109	2	23	62	153	482
Carlton	7	121	3	5	250	23	178	122	104	814
Carver	4	367	70	129	265	8	282	578	57	1,760
Cass	3	89	14	12	23	34	17	0	314	505
Chippewa	4	36	2	4	57	3	22	7	153	289
Chisago	2	392	5	0	251	3	69	7	128	856
Clay	0	169	1	1	387	15	130	25	293	1,021
Clearwater	0	30	1	0	33	0	0	0	29	93
Cook	0	20	0	0	0	0	14	7	0	41
Cottonwood	0	48	2	7	33	0	1	0	92	183
Crow Wing	3	226	19	16	587	68	51	414	188	1,572
Dakota	54	66	41	0	3,575	226	1,733	1,610	0	7,306
Dodge	1	26	1	0	41	1	0	2	0	72
Faribault	3	6	3	12	88	9	11	92	48	272
Fillmore	1	36	2	9	132	3	12	3	71	270
Freeborn	0	35	2	6	878	0	6	19	45	991
Goodhue	0	79	5	0	48	3	35	3	0	173
Grant	1	14	3	2	70	6	10	72	24	202
Hennepin	50	2,624	31	745	7,170	956	2,390	7,335	558	21,859
Houston	0	81	2	2	62	0	16	35	200	399
Hubbard	1	172	7	0	67	1	50	24	280	603
Isanti	12	0	9	21	26	3	354	31	15,719	16,174
Itasca	1	111	3	19	1,500	2	41	185	128	1,991
Jackson	0	0	0	0	18	0	0	17	19	54
Kanabec	0	25	0	0	27	0	17	0	17	88
Kandiyohi	0	0	0	27	0	0	0	0	0	27
Kittson	4	2	4	4	22	1	0	20	65	121
Koochiching	0	43	1	3	38	0	12	0	50	146
Lac qui Parle	2	23	2	9	57	2	32	35	20	182

County survey responses
Problem materials (banned) collected for recycling (tons)

County	Antifreeze	Electronic devices	Fluorescent & HID Lamps	Latex Paint	Major appliances	Oil Filters	Used Oil	Vehicle Batteries	Waste tires	Total Banned
Lake	1	13	7	17	47	2	11	5	26	130
Lake of the Woods	0	0	2	4	18	1	0	1	90	116
Le Sueur	0	19	12	0	101	9	51	50	123	364
Lincoln	0	9	2	3	53	0	39	44	22	171
Lyon	0	4	5	46	167	2	26	119	40	408
Mahnomen	0	10	1	4	31	3	4	33	11	96
Marshall	2	11	5	44	72	1	18	14	75	242
Martin	0	67	47	19	168	11	38	145	121	616
McLeod	1	54	4	30	36	21	50	58	90	346
Meeker	0	51	1	7	285	42	65	142	160	753
Mille Lacs	0	8	0	0	7	0	0	15	5	35
Morrison	8	51	3	0	52	0	198	0	273	586
Mower	0	0	0	6	0	0	0	0	0	6
Murray	2	20	1	4	18	1	8	2	30	87
Nicollet	0	26	12	0	196	9	58	107	131	537
Nobles	0	31	3	8	124	4	24	18	66	278
Norman	0	0	1	3	0	0	0	0	0	4
Olmsted	8	8,653	29	0	449	5	463	5,400	1,776	16,782
Otter Tail	23	360	17	392	193	16	56	74	310	1,441
Pennington	0	52	4	8	23	2	8	261	179	536
Pine	4	46	22	8	62	4	71	54	179	449
Pipestone	3	35	4	0	51	4	46	71	91	305
Polk	0	109	3	24	115	3	8	63	153	478
Pope/Douglas	0	79	6	0	27	250	58	413	104	937
Ramsey	3	157	2	0	431	10	130	82	175	990
Red Lake	0	11	1	2	0	2	4	25	7	53
Redwood	28	350	3	0	49	24	169	329	503	1,454
Renville	0	2	4	3	6	0	2	1	111	128
Rice	36	129	5	45	180	4	48	499	223	1,169
Rock	0	16	0	0	15	0	6	0	314	351
Roseau	4	33	15	12	33	8	18	29	50	202
Scott	162	216	37	91	216	108	2,033	495	543	3,901
Sherburne	0	149	0	0	61	0	16	0	15	242
Sibley	0	30	3	1	71	12	27	19	97	260
St. Louis	38	318	14	26	1,566	148	1,261	184	4,890	8,445

County survey responses
Problem materials (banned) collected for recycling (tons)

County	Antifreeze	Electronic devices	Fluorescent & HID Lamps	Latex Paint	Major appliances	Oil Filters	Used Oil	Vehicle Batteries	Waste tires	Total Banned
Stearns	8	215	14	51	913	74	122	934	304	2,634
Steele	0	61	11	5	0	0	161	12	35	285
Stevens	1	45	2	4	59	3	37	57	120	328
Swift	0	52	4	0	120	4	7	59	40	287
Todd	0	49	1	7	82	0	0	3	70	213
Traverse	2	0	0	0	21	2	3	21	7	56
Wabasha	0	0	0	0	0	0	0	0	0	0
Wadena	1	38	3	6	27	1	5	65	11	156
Waseca	0	46	3	0	68	944	29	15	430	1,535
Washington	28	710	0	249	93	11	112	24	23	1,250
Watsonwan	0	0	0	2	0	0	0	0	0	2
Wilkin	0	4	2	0	45	3	5	40	13	113
Winona	0	0	0	0	0	0	0	9	0	9
WLSSD	63	560	29	82	859	106	0	231	100	2,030
Wright	3	70	6	20	143	0	52	65	157	517
Yellow Medicine	0	0	0	0	11	0	0	0	0	12
Metro Area	311	4,700	205	1,215	12,345	1,352	6,918	10,254	1,567	38,867
Greater Minn.	304	14,215	444	1,130	12,857	1,949	5,459	11,542	31,550	79,448
Total	614	18,915	649	2,345	25,202	3,301	12,377	21,796	33,116	118,315

County survey responses
Other materials collected for recycling (tons)

County	Carpet	Mattresses and Box Springs	Pallets	Textiles	Other	Total
Aitkin	0	0	172	107	0	280
Anoka	89	111	4,190	604	221	5,216
Becker	0	0	81	297	16,811	17,189
Beltrami	0	0	157	0	0	157
Benton	0	0	31	0	0	31
Big Stone	0	0	0	18	0	18
Blue Earth	0	0	12,674	259	0	12,933
Brown	0	0	1,052	0	0	1,052
Carlton	0	31	0	125	1	157
Carver	66	13	1,409	92	0	1,580
Cass	0	0	0	12	20	32
Chippewa	0	0	0	18	625	644
Chisago	1	52	0	10	0	63
Clay	0	3	0	270	0	273
Clearwater	0	0	0	0	0	0
Cook	0	0	0	0	0	0
Cottonwood	0	25	0	21	0	46
Crow Wing	0	121	2,877	233	9	3,239
Dakota	0	17	6,004	5,134	0	11,154
Dodge	5	0	21	6	54	86
Faribault	0	0	0	5	0	5
Fillmore	0	0	3	5	1,262	1,270
Freeborn	0	0	613	0	0	613
Goodhue	0	0	79	0	0	79
Grant	0	0	0	0	57	57
Hennepin	0	210	0	0	14,131	14,341
Houston	0	0	0	45	0	45
Hubbard	0	0	0	202	0	202
Isanti	0	49	53	0	122	224
Itasca	0	0	132	0	0	132
Jackson	0	0	650	25	0	675
Kanabec	0	0	0	0	0	0
Kandiyohi	0	0	0	0	0	0
Kittson	0	0	0	0	0	0
Koochiching	0	0	0	0	0	0
Lac qui Parle	0	0	0	25	0	26
Lake	0	0	0	0	0	0
Lake of the Woods	0	0	0	0	0	0
Le Sueur	3	1	1,854	2	0	1,859

County survey responses
Other materials collected for recycling (tons)

County	Carpet	Mattresses and Box Springs	Pallets	Textiles	Other	Total
Lincoln	0	1	0	73	0	73
Lyon	0	0	485	424	1,979	2,887
Mahnomen	0	0	0	0	0	0
Marshall	0	0	23	1	0	24
Martin	0	0	37	233	0	270
McLeod	0	24	818	0	185	1,026
Meeker	0	0	0	4	0	4
Mille Lacs	0	2	0	0	0	2
Morrison	0	0	754	23	1,296	2,073
Mower	0	0	4,258	67	0	4,325
Murray	0	0	123	113	0	236
Nicollet	0	1	1,601	2	0	1,604
Nobles	0	0	732	389	0	1,121
Norman	0	0	0	0	544	544
Olmsted	181	0	3,947	619	15	4,762
Otter Tail	0	0	2,953	0	249	3,202
Pennington	0	0	0	0	6	6
Pine	2	35	0	0	0	37
Pipestone	0	0	1,778	35	0	1,813
Polk	0	0	34	78	5	117
Pope/Douglas	0	0	0	40	1	40
Ramsey	2	13	2,719	157	223	3,114
Red Lake	0	0	0	0	0	0
Redwood	0	12	708	924	2,849	4,493
Renville	0	0	0	0	0	0
Rice	0	2	2,802	0	11,727	14,531
Rock	0	0	0	0	0	0
Roseau	0	0	1,975	0	0	1,975
Scott	0	7	1,313	0	71	1,390
Sherburne	0	0	0	0	337	337
Sibley	2	1	26	0	0	29
St. Louis	0	82	3	54	648	787
Stearns	0	0	1,457	0	0	1,457
Steele	0	0	3,986	112	0	4,098
Stevens	0	3	0	11	0	14
Swift	0	0	0	0	0	0
Todd	0	0	0	0	776	776
Traverse	0	0	1	0	0	1

County survey responses
Other materials collected for recycling (tons)

County	Carpet	Mattresses and Box Springs	Pallets	Textiles	Other	Total
Wabasha	0	0	0	0	0	0
Wadena	0	20	2	0	2	23
Waseca	0	0	116	19	0	135
Washington	0	0	551	0	2,893	3,444
Watonwan	0	0	0	0	0	0
Wilkin	0	0	0	0	0	0
Winona	0	0	6,452	0	552	7,004
WLSSD	58	0	1,583	1,372	546	3,560
Wright	0	0	241	2	0	243
Yellow Medicine	0	0	0	0	0	0
Metro Area	157	370	16,186	5,987	17,539	40,239
Greater Minn.	251	466	57,343	6,280	40,676	105,016
Total	408	837	73,528	12,267	58,215	145,255