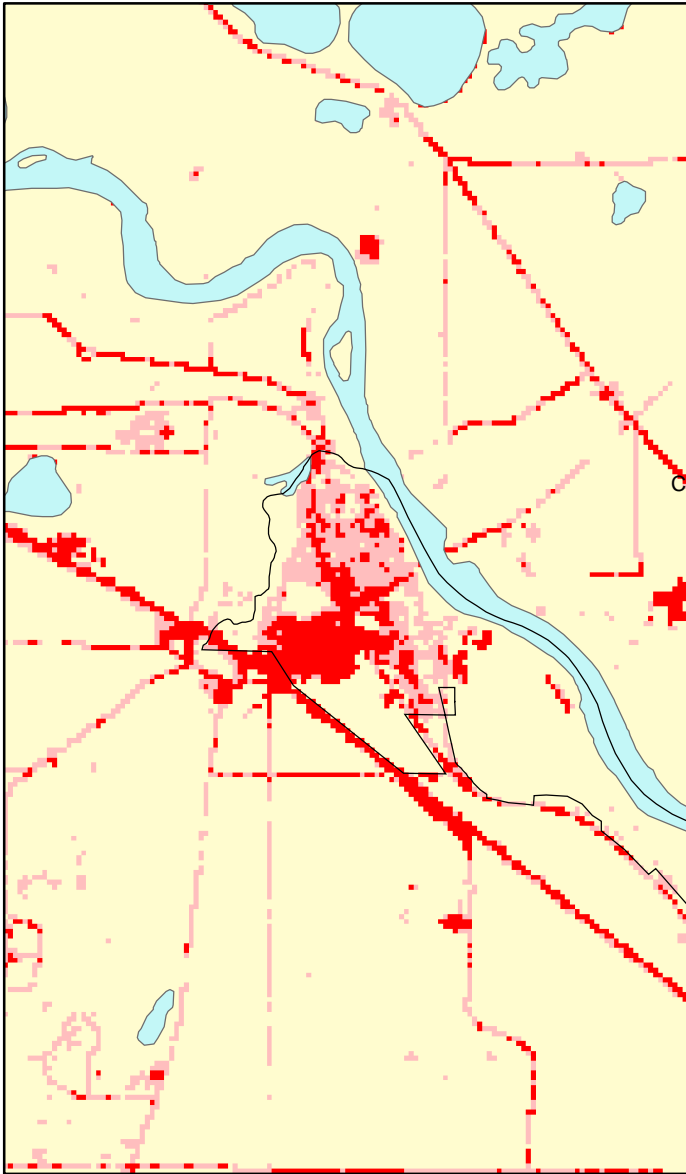
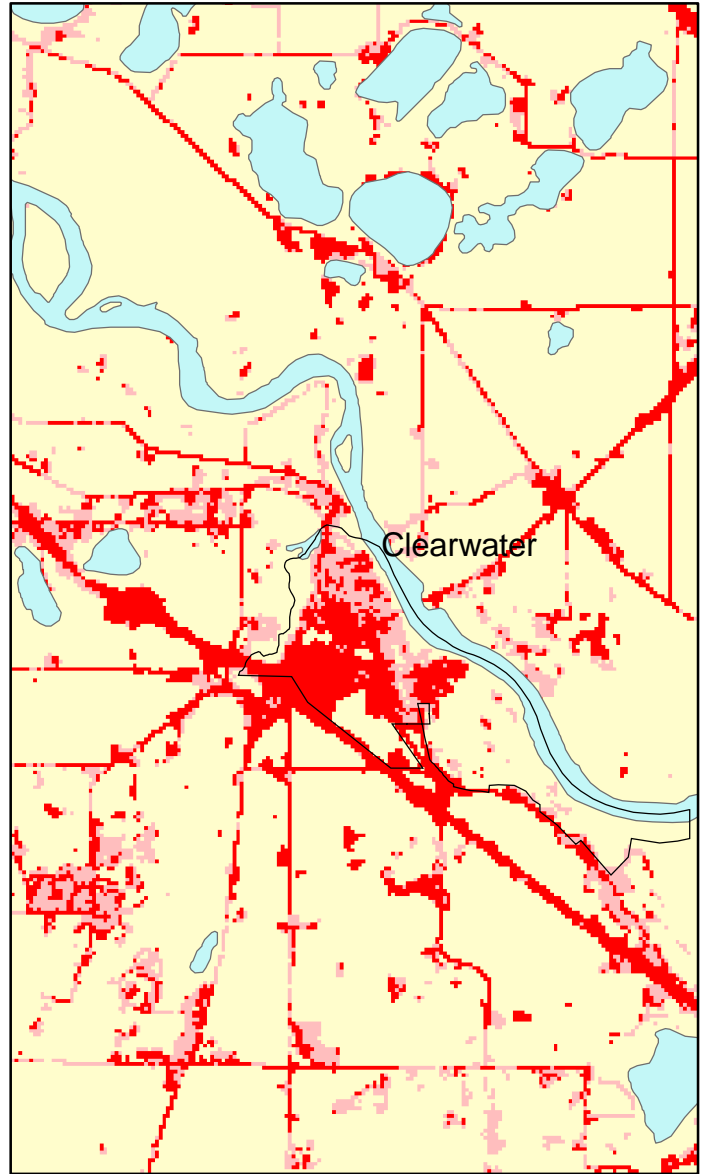


Clearwater, MN: Impervious Cover

1990



2000



Clearwater Summary	
Total Area of MCD (Acres):	1054
1990 Impervious Area Total (Acres):	156
2000 Impervious Area Total (Acres):	261
1990 Percent Impervious Surface:	15%
2000 Percent Impervious Surface:	25%
Increase in IC (Acres)	105
Percent Increase IC%	67%

