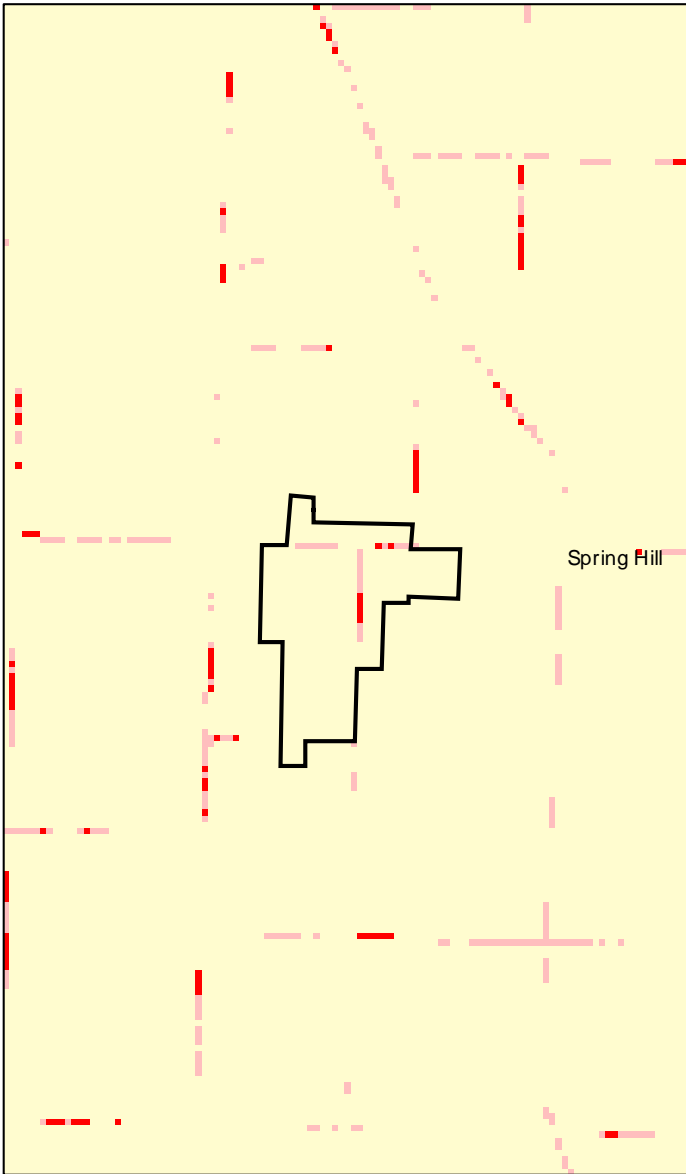
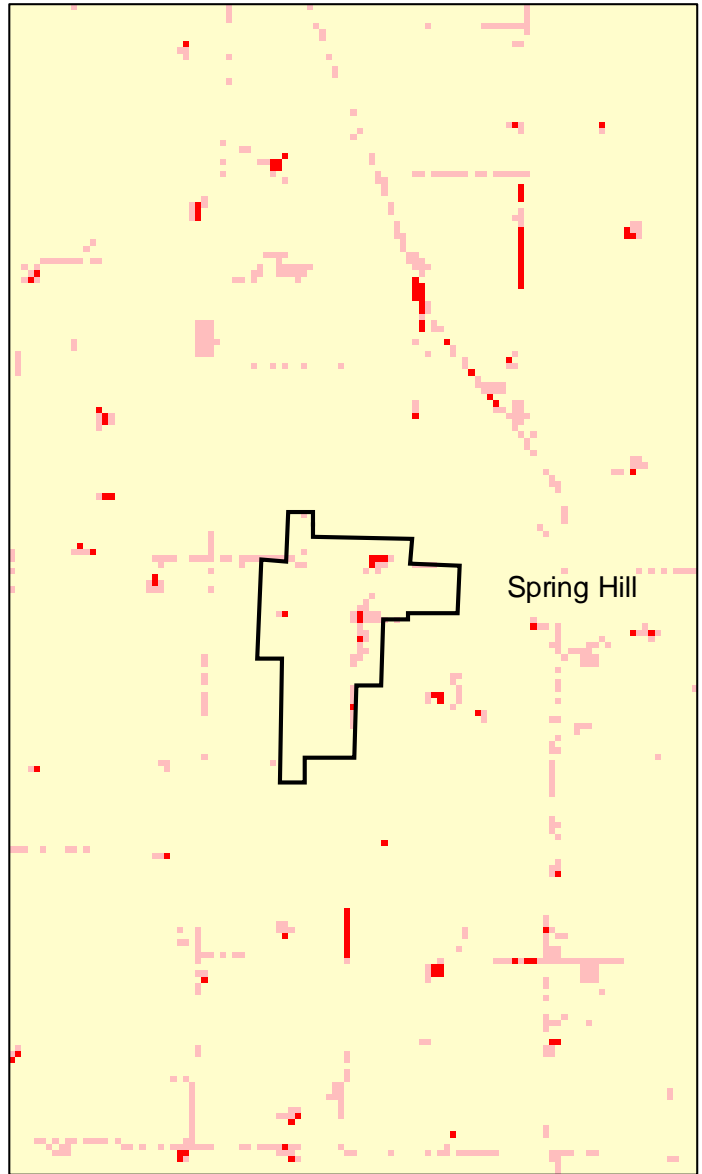


# Spring Hill, MN: Impervious Cover

**1990**



**2000**



<b>Spring Hill Summary</b>	
Total Area Of MCD (Acres):	466
1990 Impervious Area Total (Acres):	6
2000 Impervious Area Total (Acres):	9
1990 Percent Impervious Surface:	1%
2000 Percent Impervious Surface:	2%
<b>Increase In IC (Acres)</b>	<b>3</b>
<b>Percent Increase IC %</b>	<b>53%</b>

