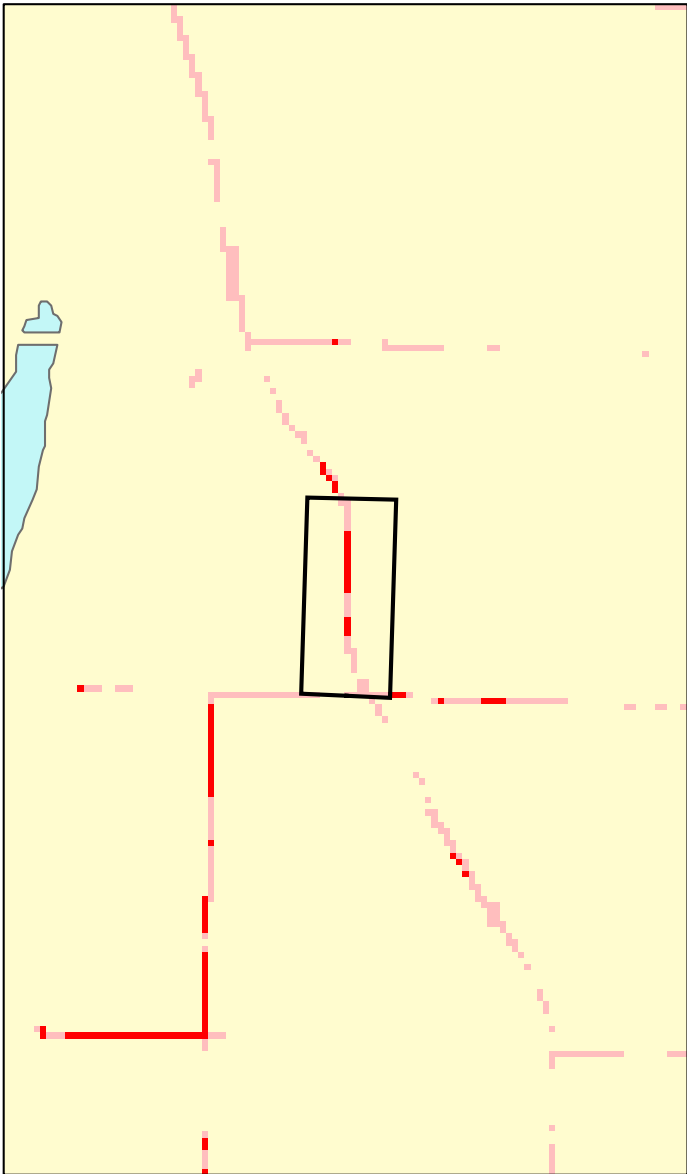
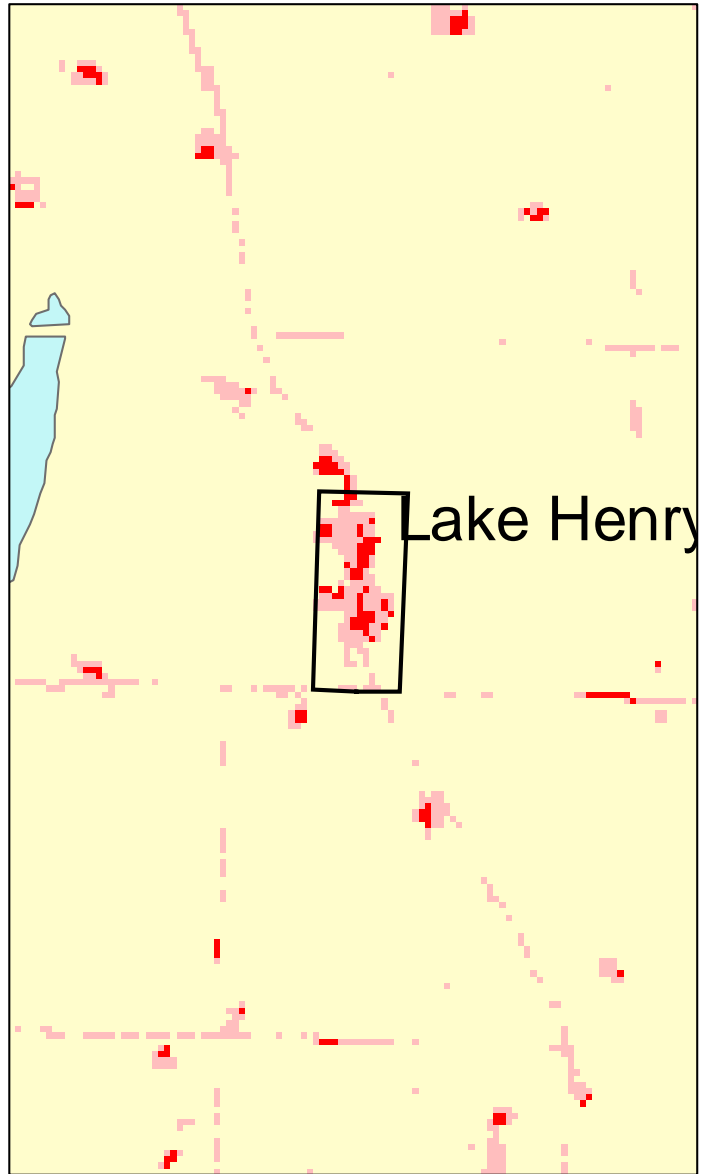


Lake Henry, MN: Impervious Cover

1990



2000



Lake Henry

Lake Henry Summary	
Total Area Of MCD (Acres):	89
1990 Impervious Area Total (Acres):	4
2000 Impervious Area Total (Acres):	15
1990 Percent Impervious Surface:	4%
2000 Percent Impervious Surface:	16%
Increase In IC (Acres)	11
Percent Increase IC %	301%

