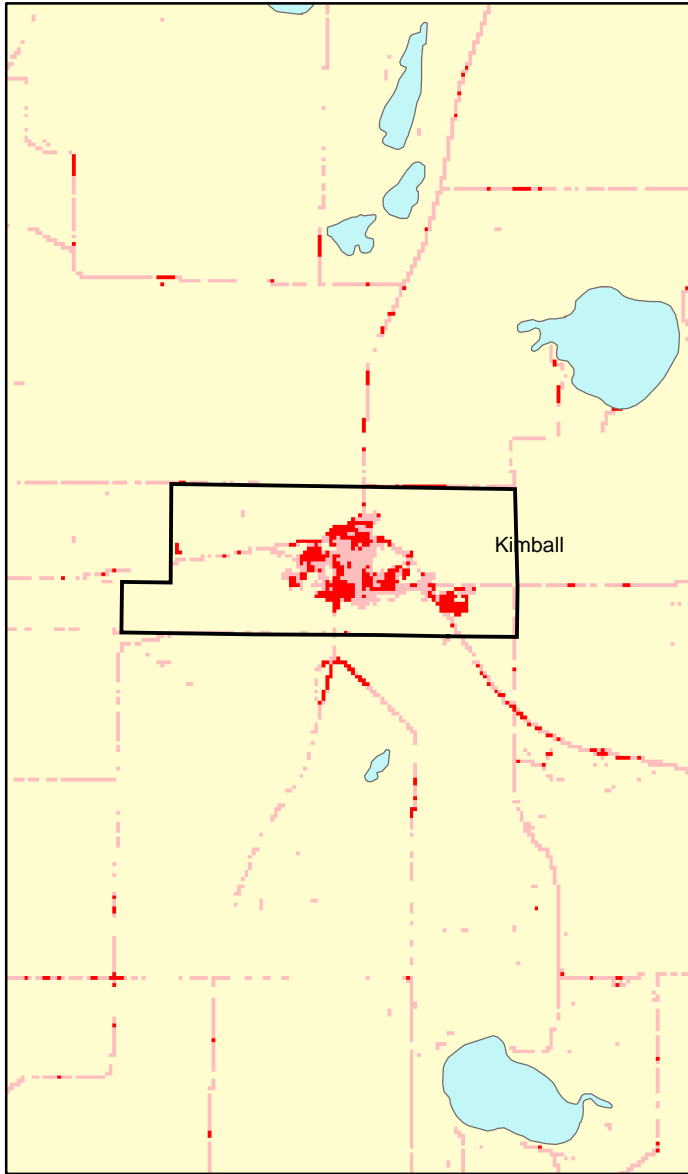
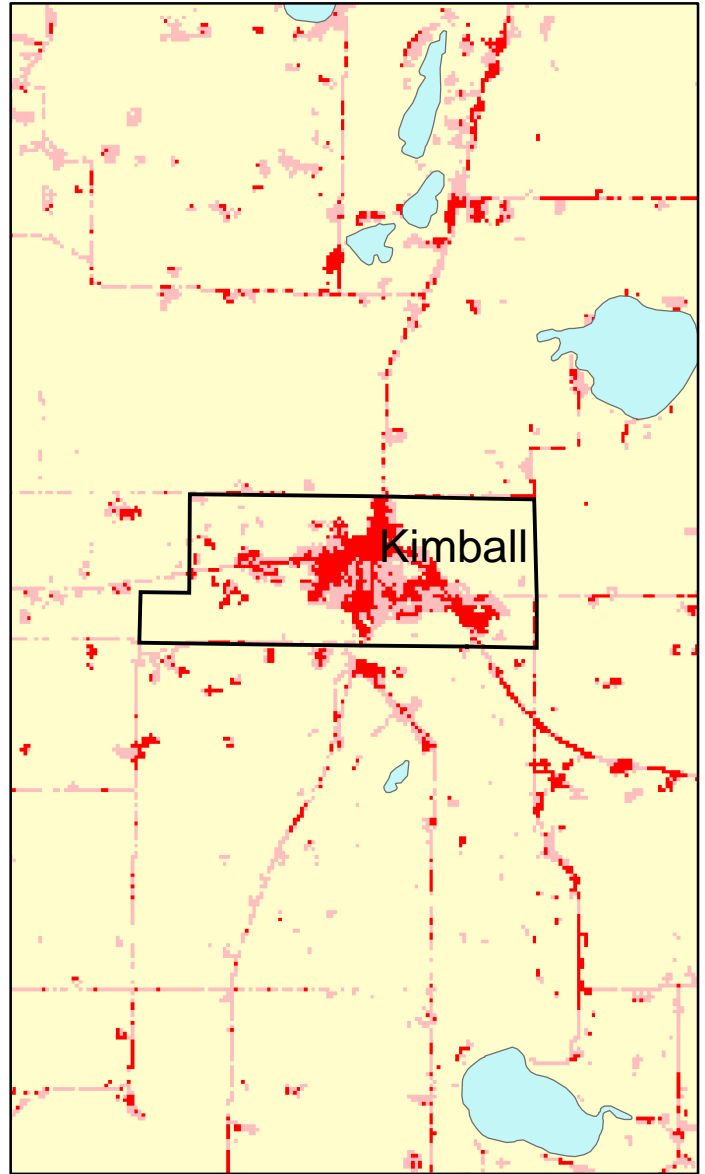


Kimball, MN: Impervious Cover

1990



2000



| Kimball Summary | |
|-------------------------------------|------------|
| Total Area Of MCD (Acres): | 885 |
| 1990 Impervious Area Total (Acres): | 82 |
| 2000 Impervious Area Total (Acres): | 155 |
| 1990 Percent Impervious Surface: | 9% |
| 2000 Percent Impervious Surface: | 17% |
| Increase In IC (Acres) | 72 |
| Percent Increase IC % | 87% |

