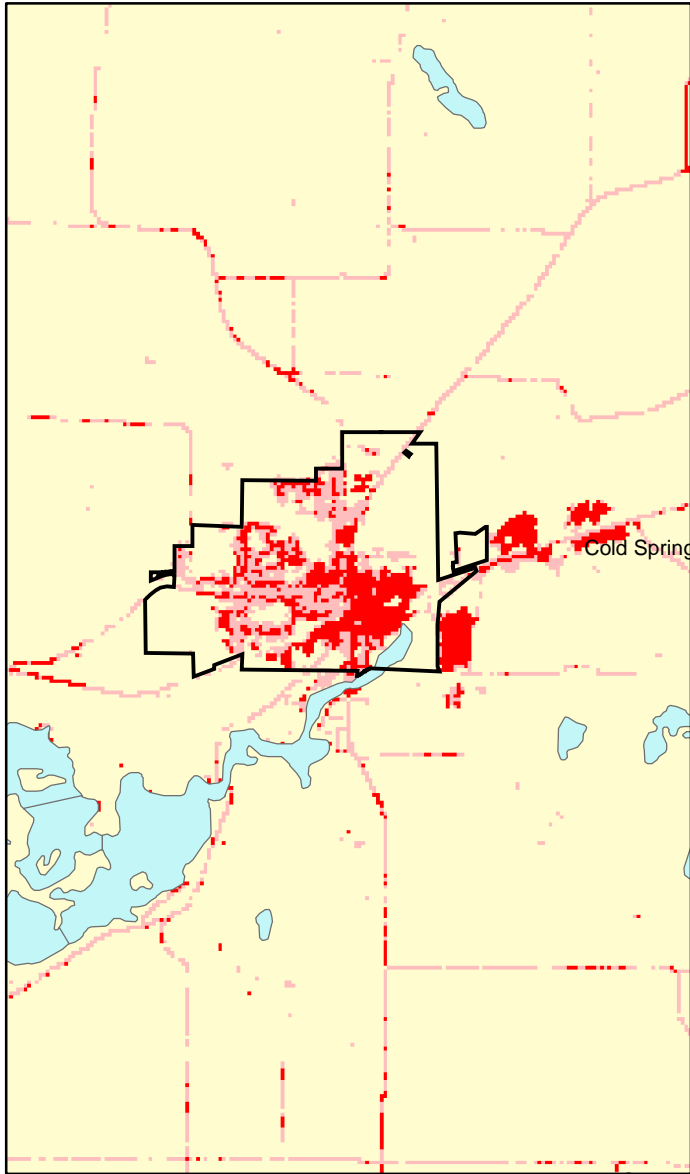
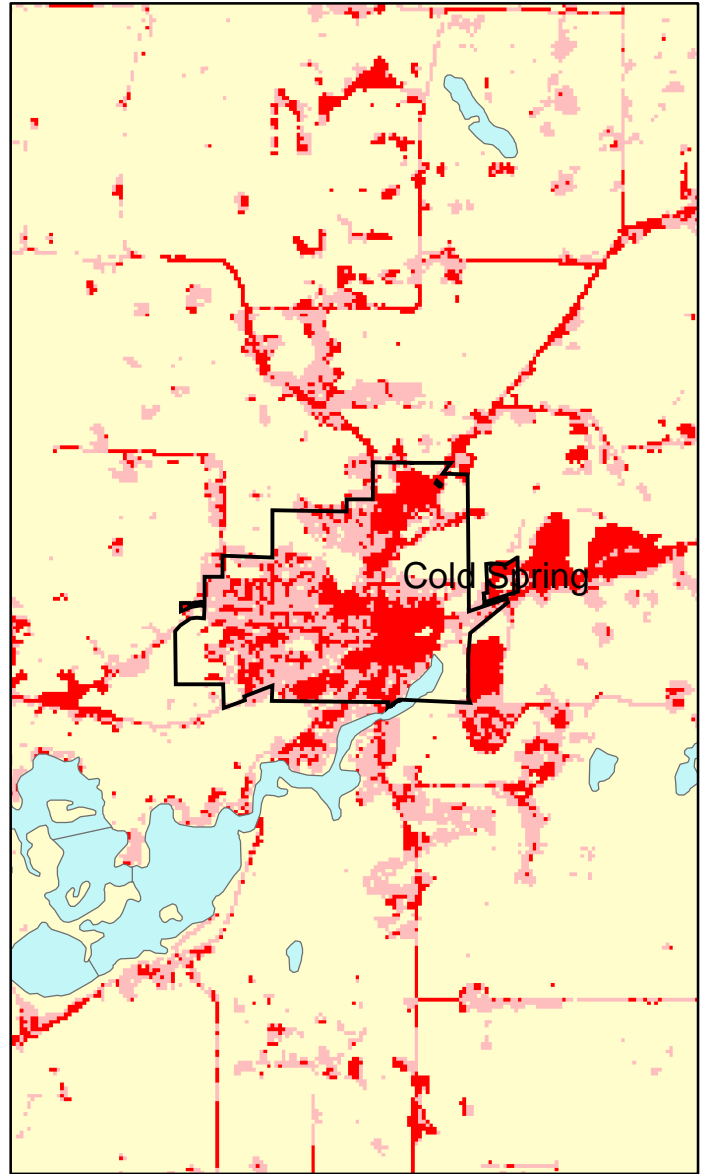


# Cold Spring, MN: Impervious Cover

1990



2000



Cold Spring Summary	
Total Area Of MCD (Acres):	1498
1990 Impervious Area Total (Acres):	285
2000 Impervious Area Total (Acres):	507
1990 Percent Impervious Surface:	19%
2000 Percent Impervious Surface:	34%
<b>Increase In IC (Acres)</b>	<b>222</b>
<b>Percent Increase IC %</b>	<b>78%</b>

