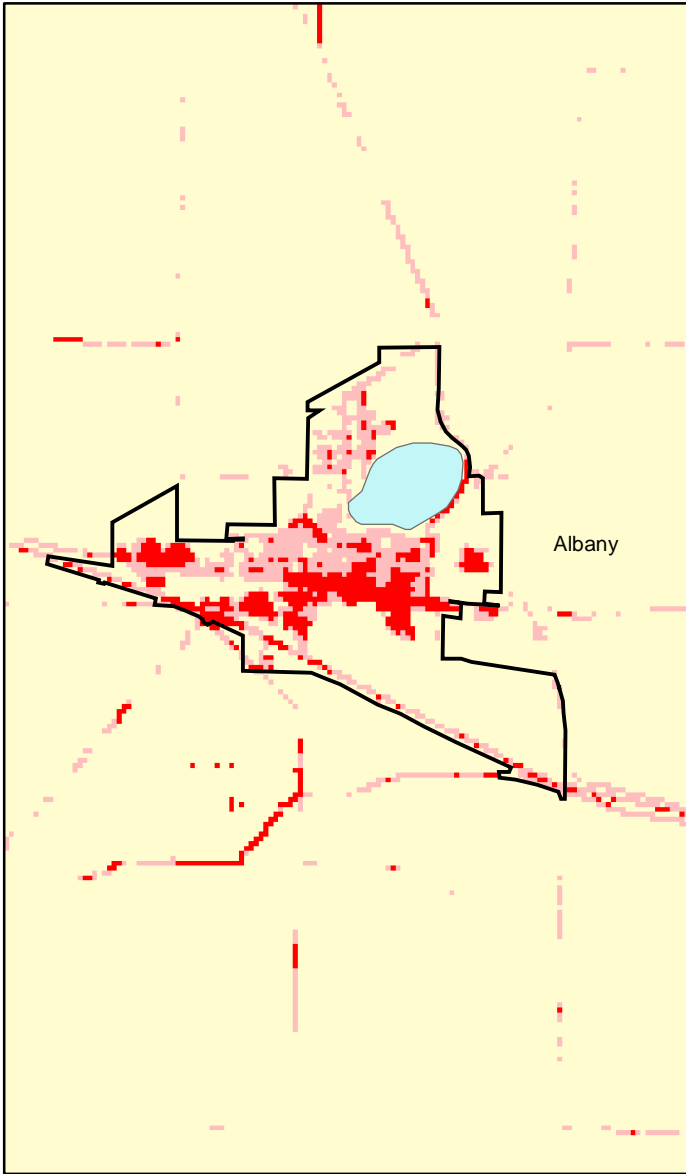
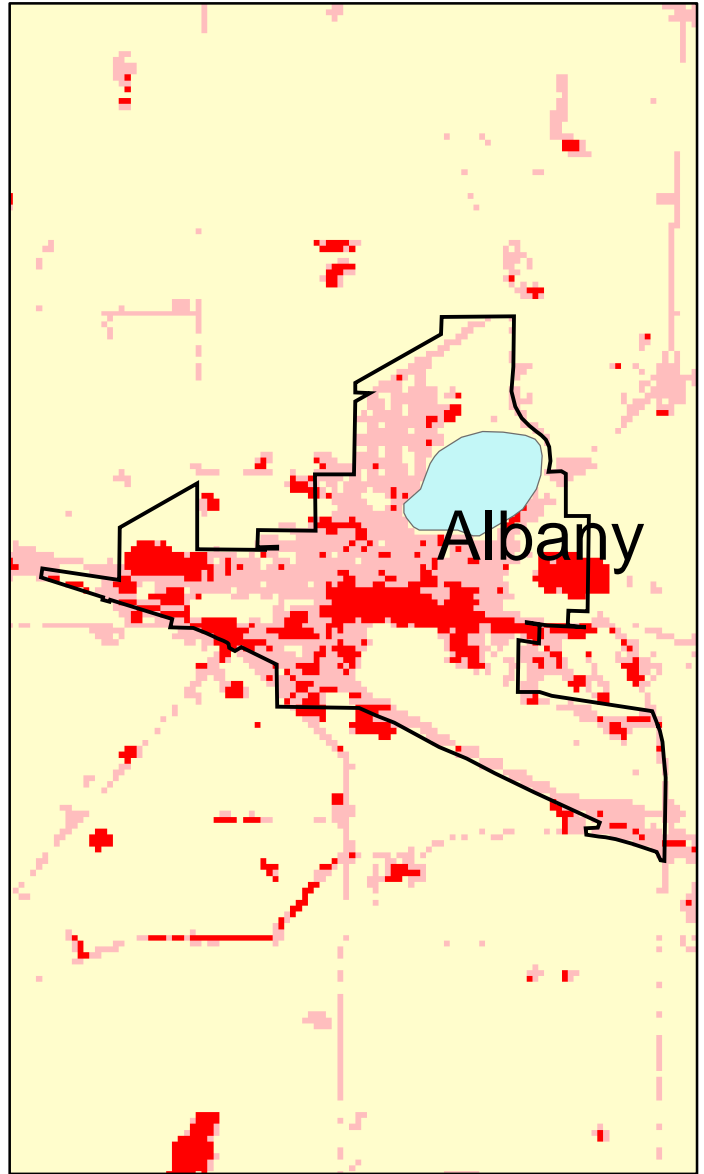


# Albany, MN: Impervious Cover

## 1990



## 2000



<b>Albany Summary</b>	
Total Area Of MCD (Acres):	965
1990 Impervious Area Total (Acres):	144
2000 Impervious Area Total (Acres):	216
1990 Percent Impervious Surface:	15%
2000 Percent Impervious Surface:	22%
<b>Increase In IC (Acres)</b>	<b>72</b>
<b>Percent Increase IC %</b>	<b>50%</b>

