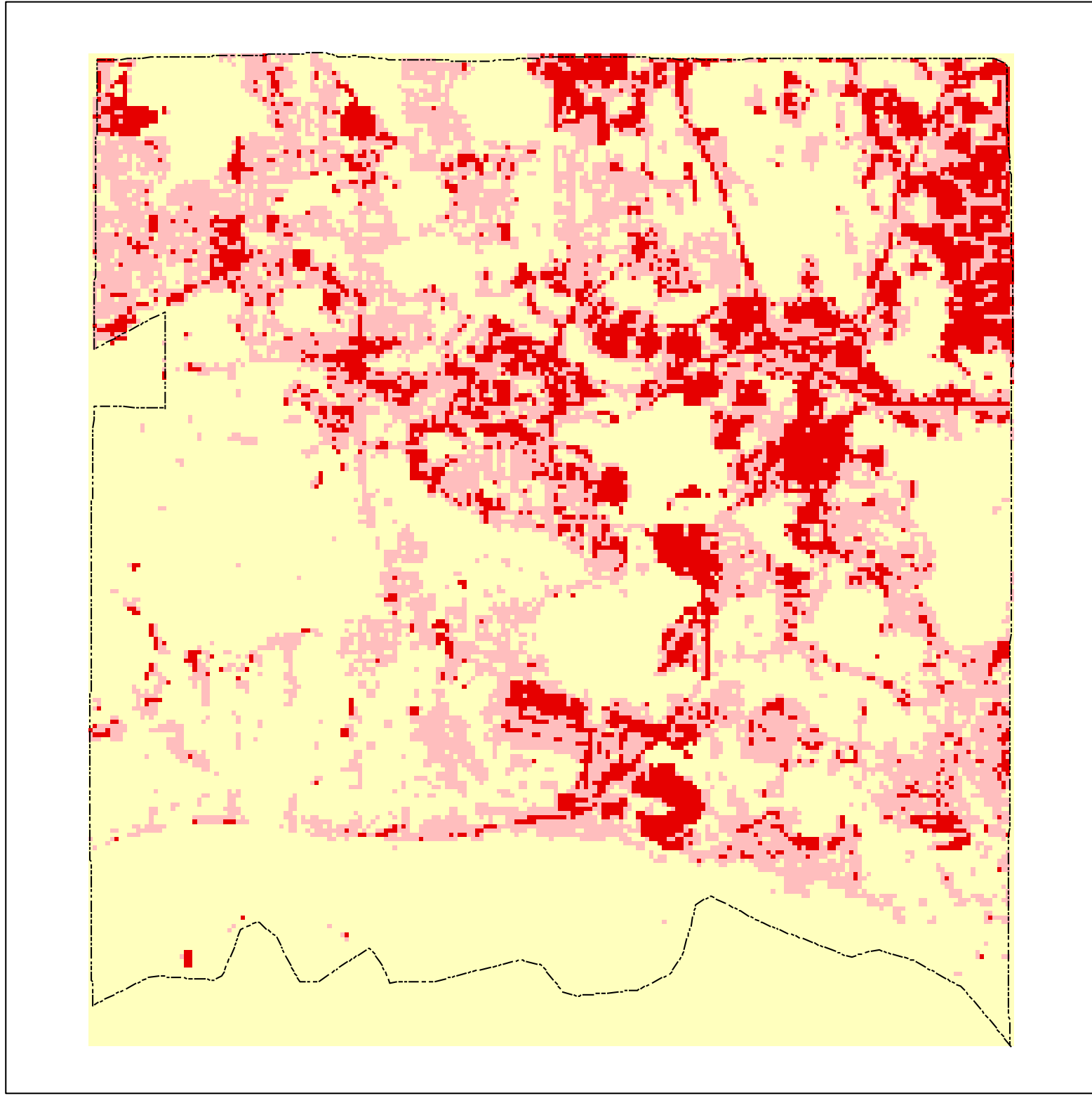
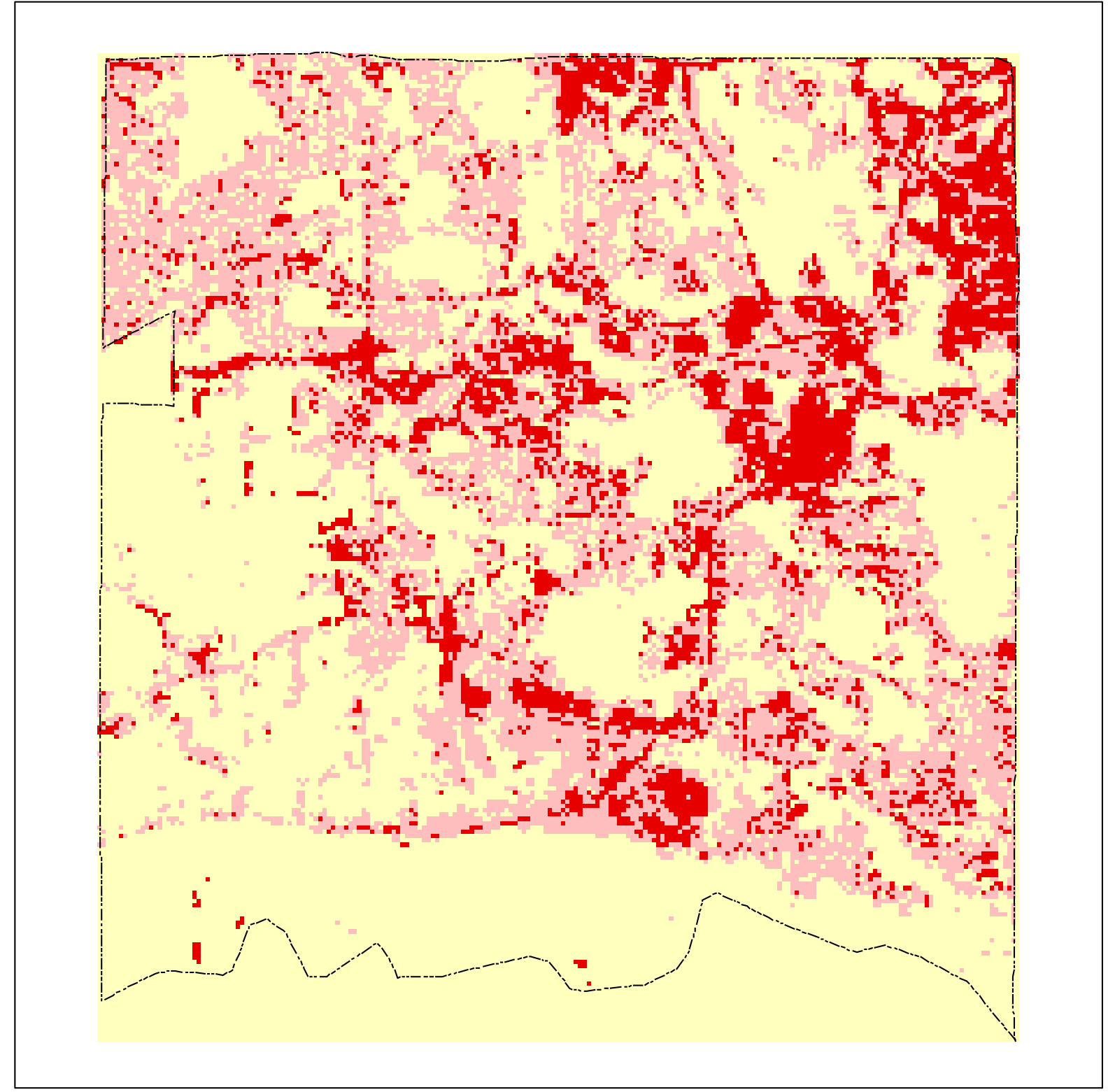


City of Eden Prairie Impervious Coverage based on Satellite Remote Sensing

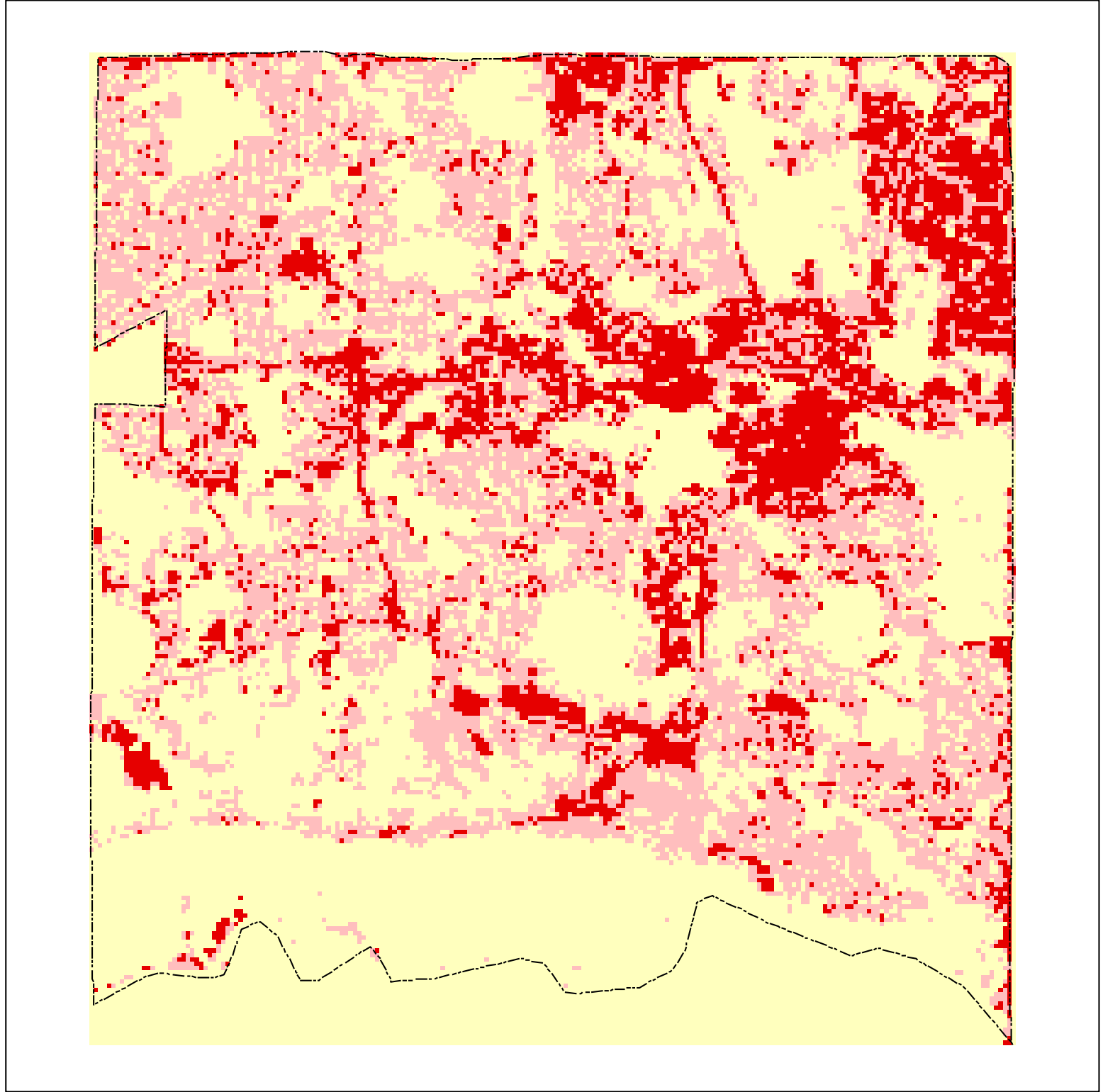
1986



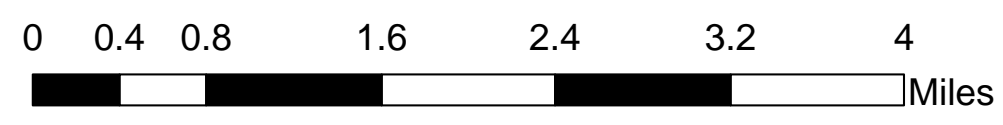
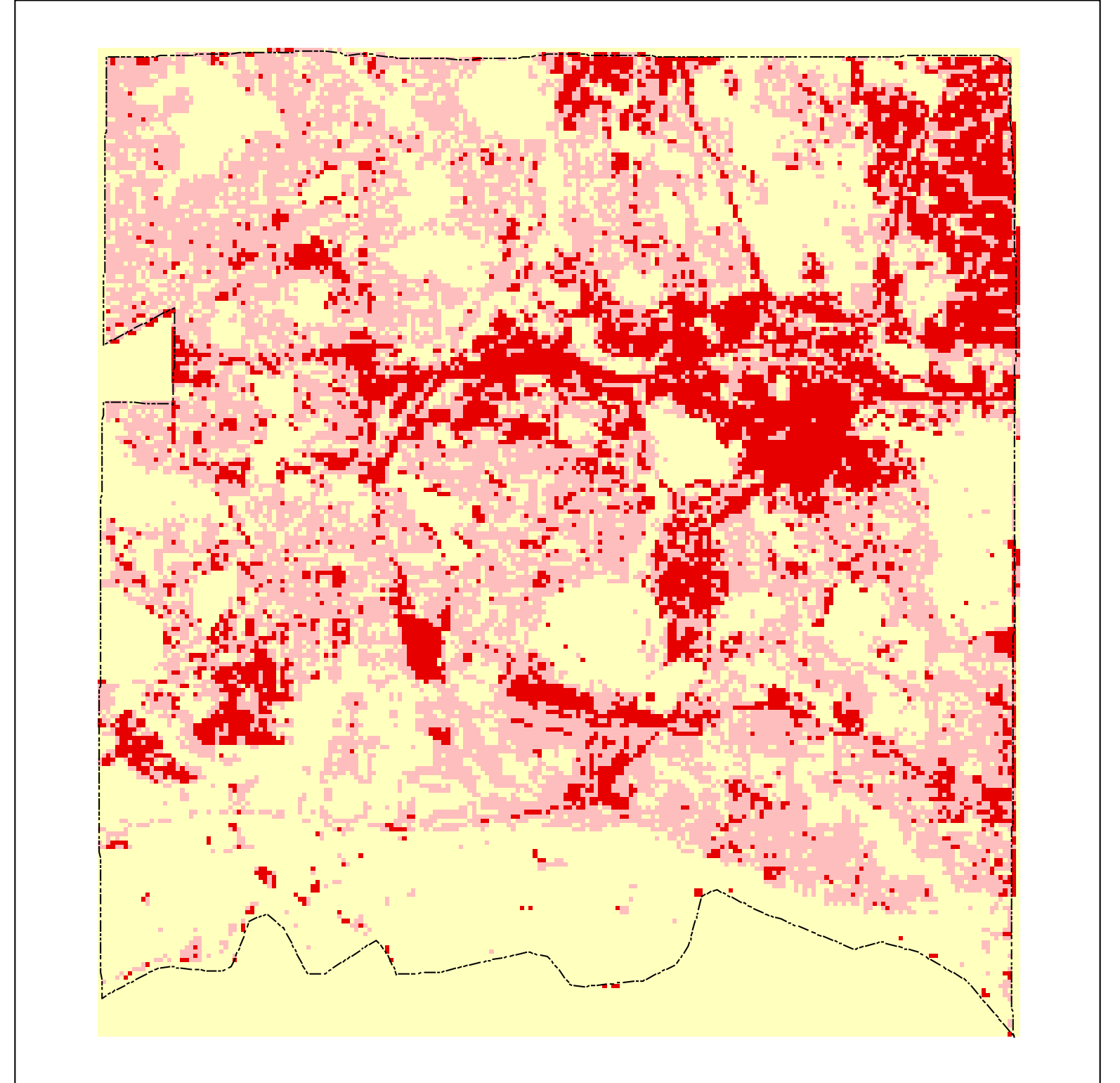
1991



1998



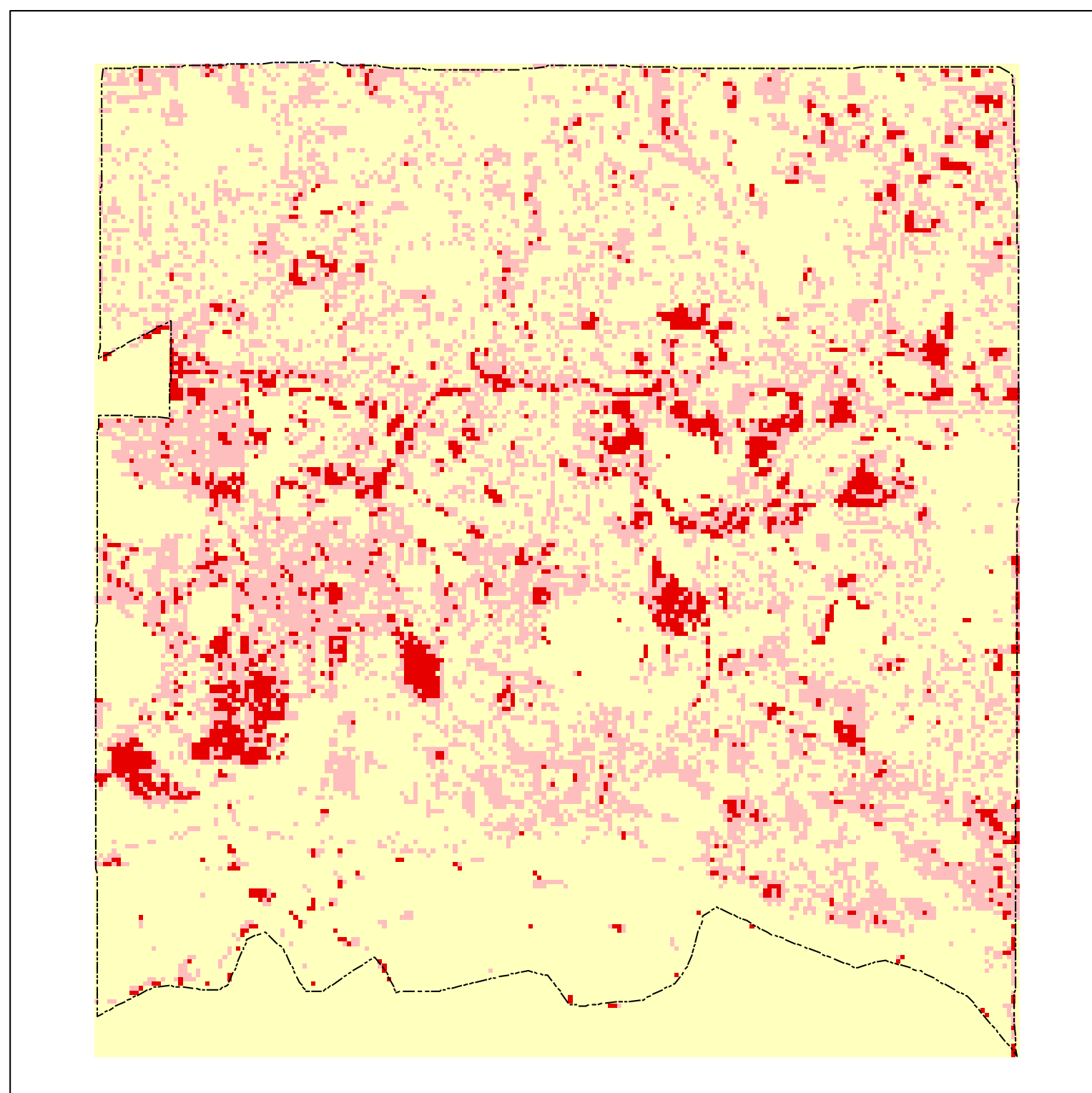
2002



1986 through 2002 Impervious Cover



Percent Change from 1986 to 2002



Municipality	Impervious Acres				1986-2002 Change
	1986	1991	1998	2002	
Eden Prairie	4019.7	4377.3	5051.4	5423.3	1403.6

% Change

