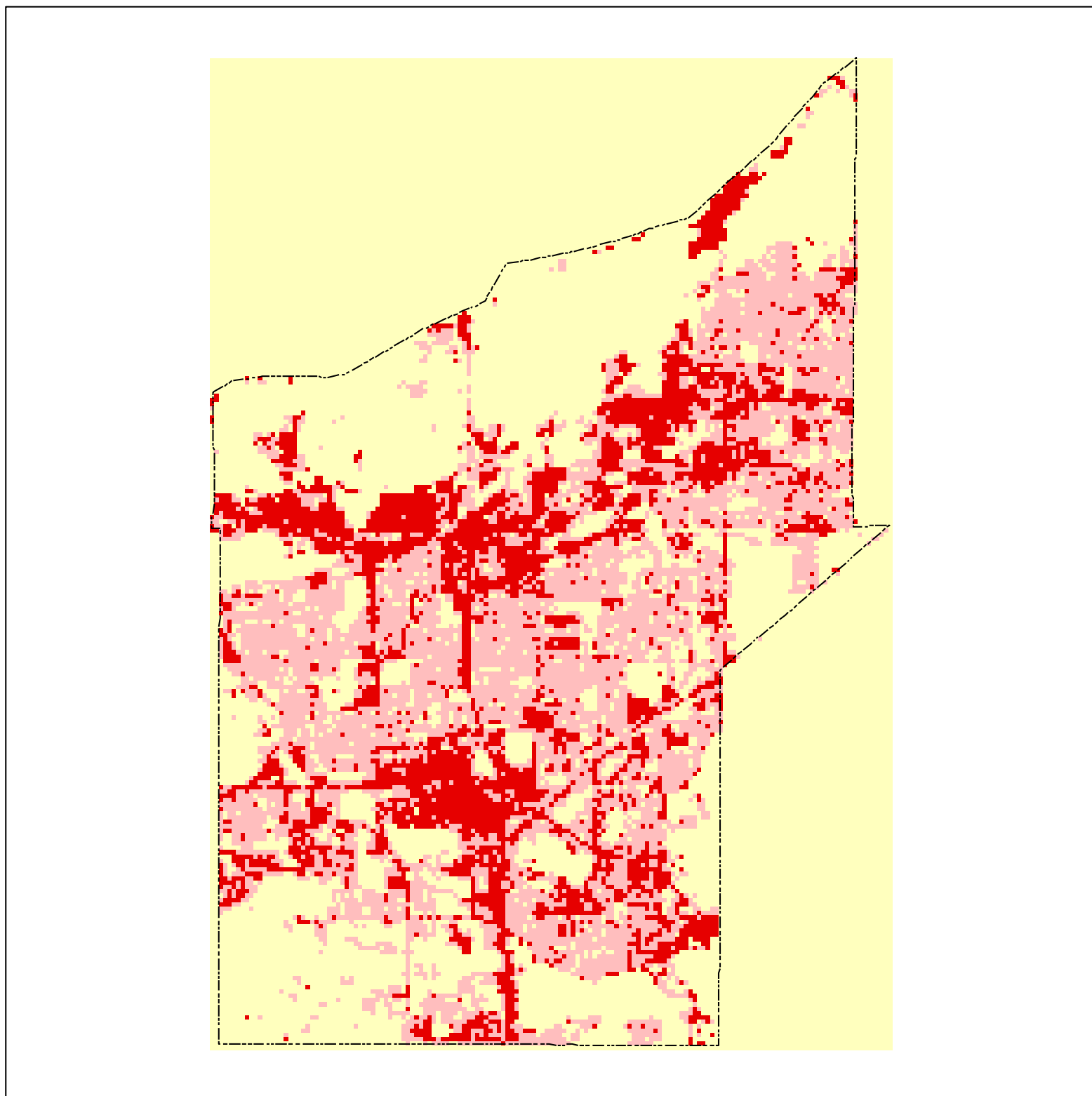
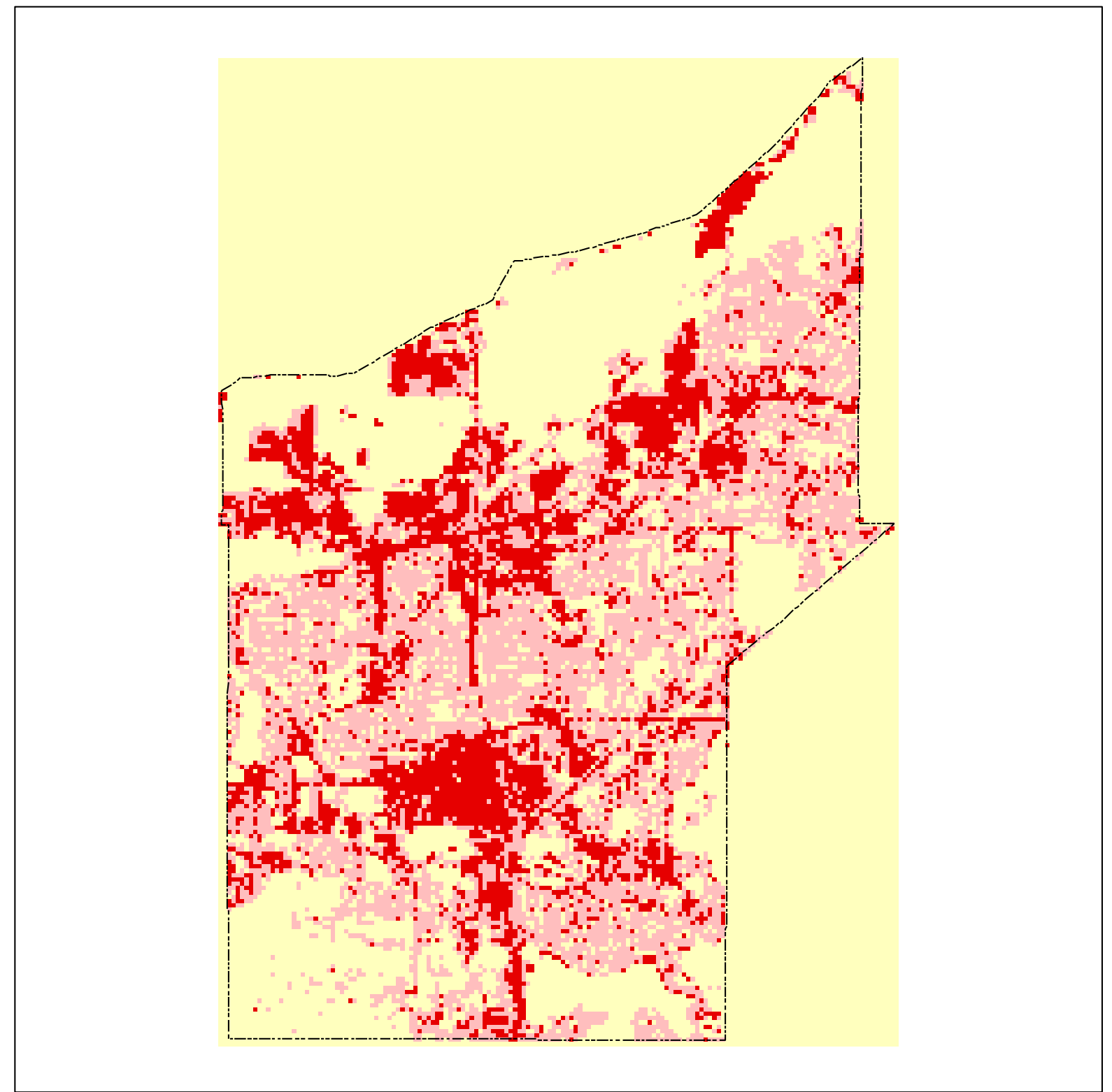


City of Burnsville Impervious Coverage based on Satellite Remote Sensing

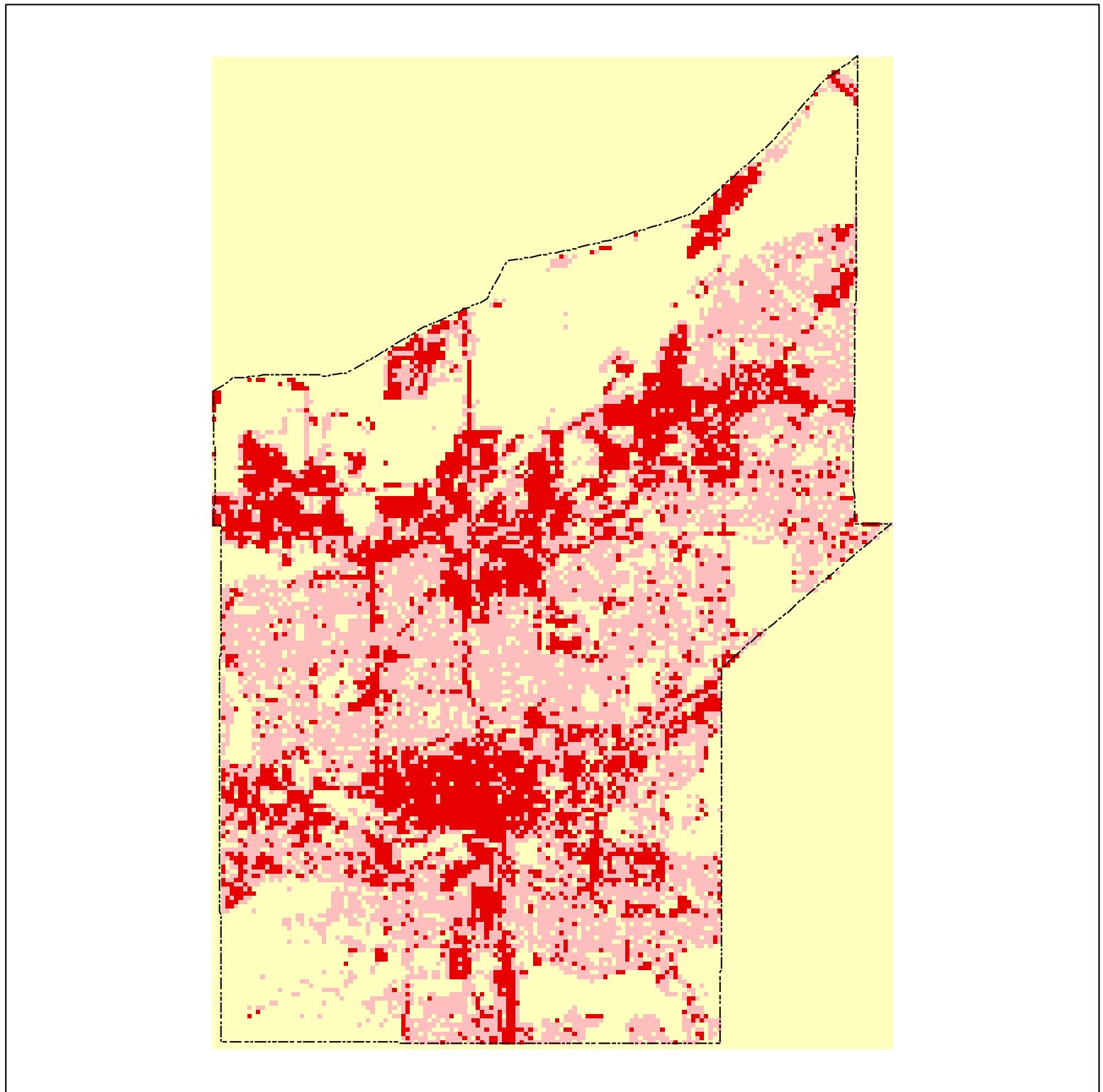
1986



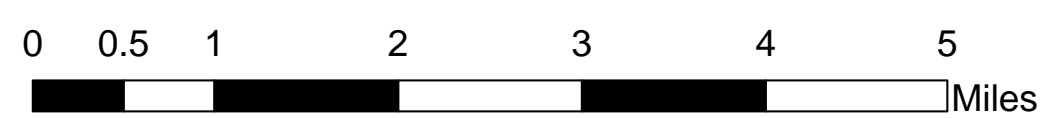
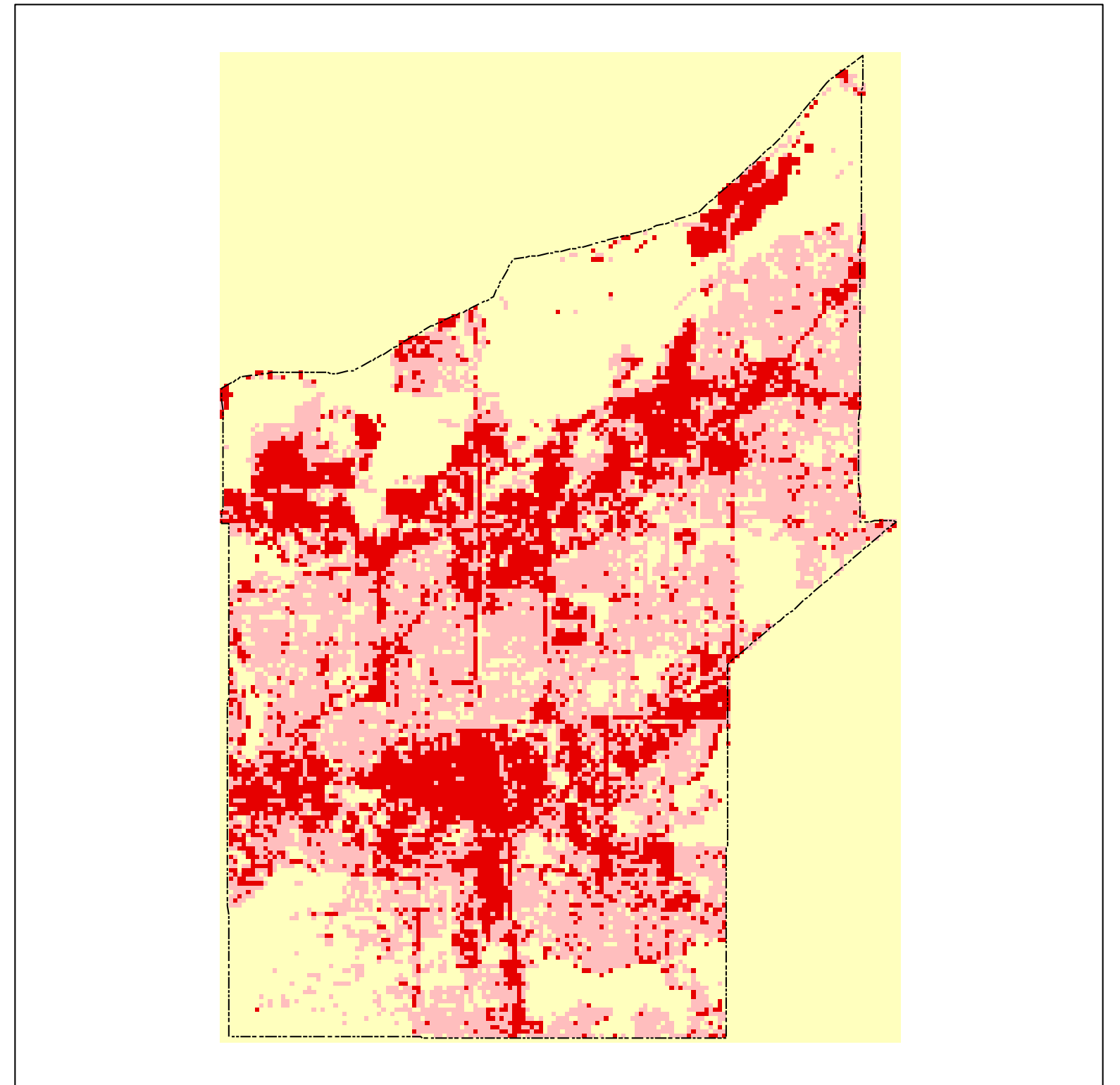
1991



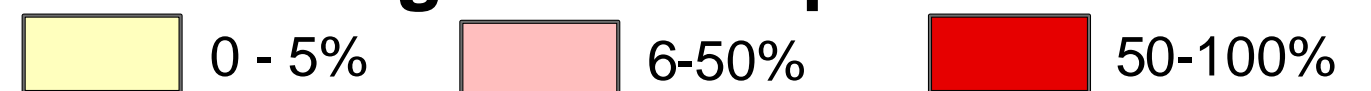
1998



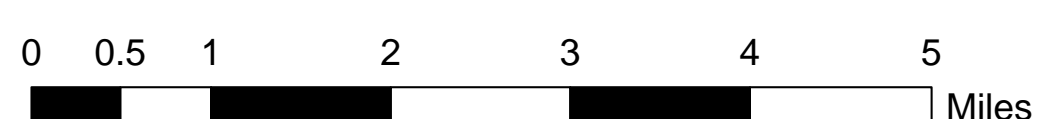
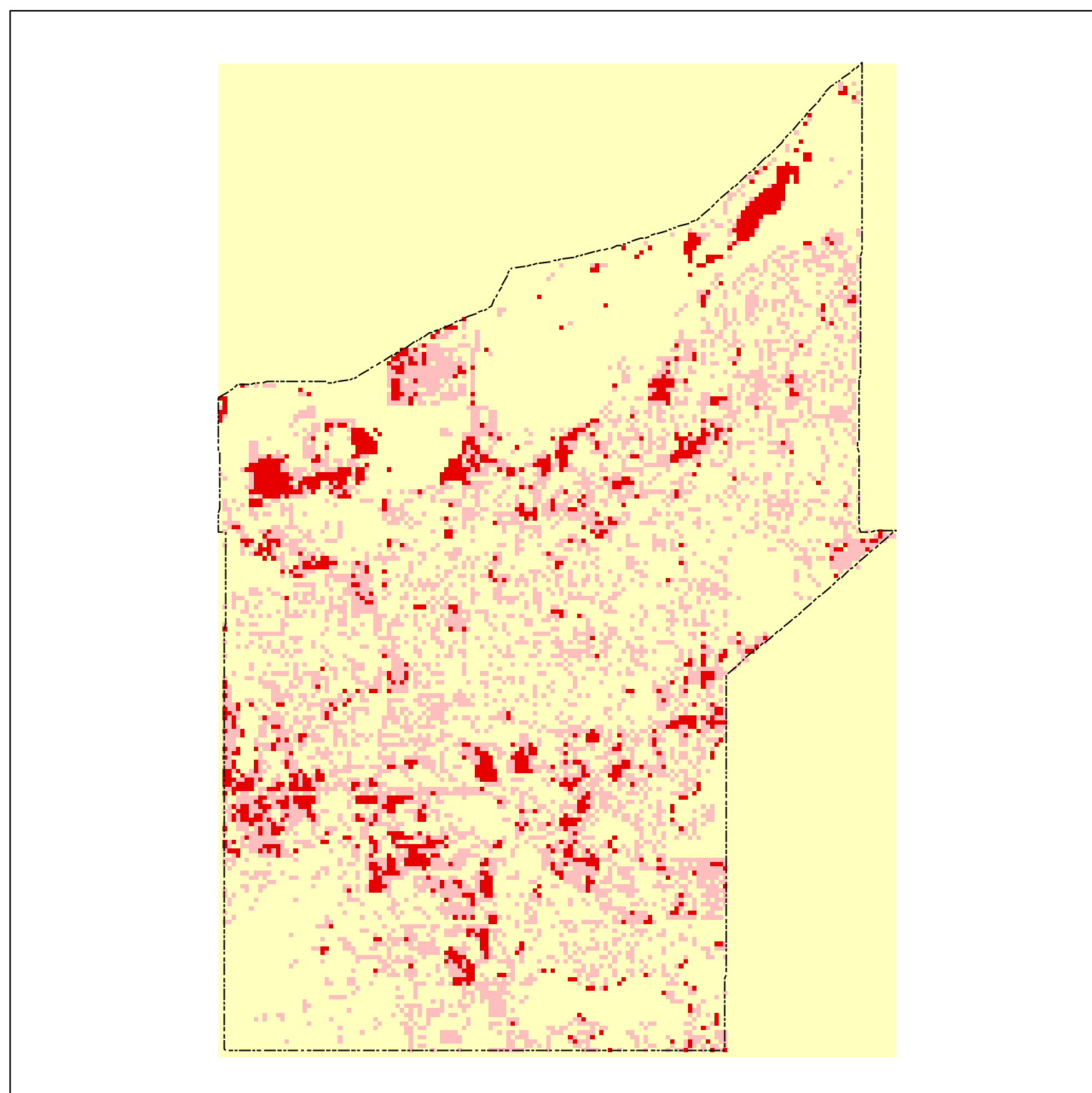
2002



1986 through 2002 Impervious Cover



Percent Change from 1986 to 2002



Impervious Acres					1986-2002 Change
Municipality	1986	1991	1998	2002	
Burnsville	4392.4	4611.2	4822.8	5238.8	846.4

% Change

