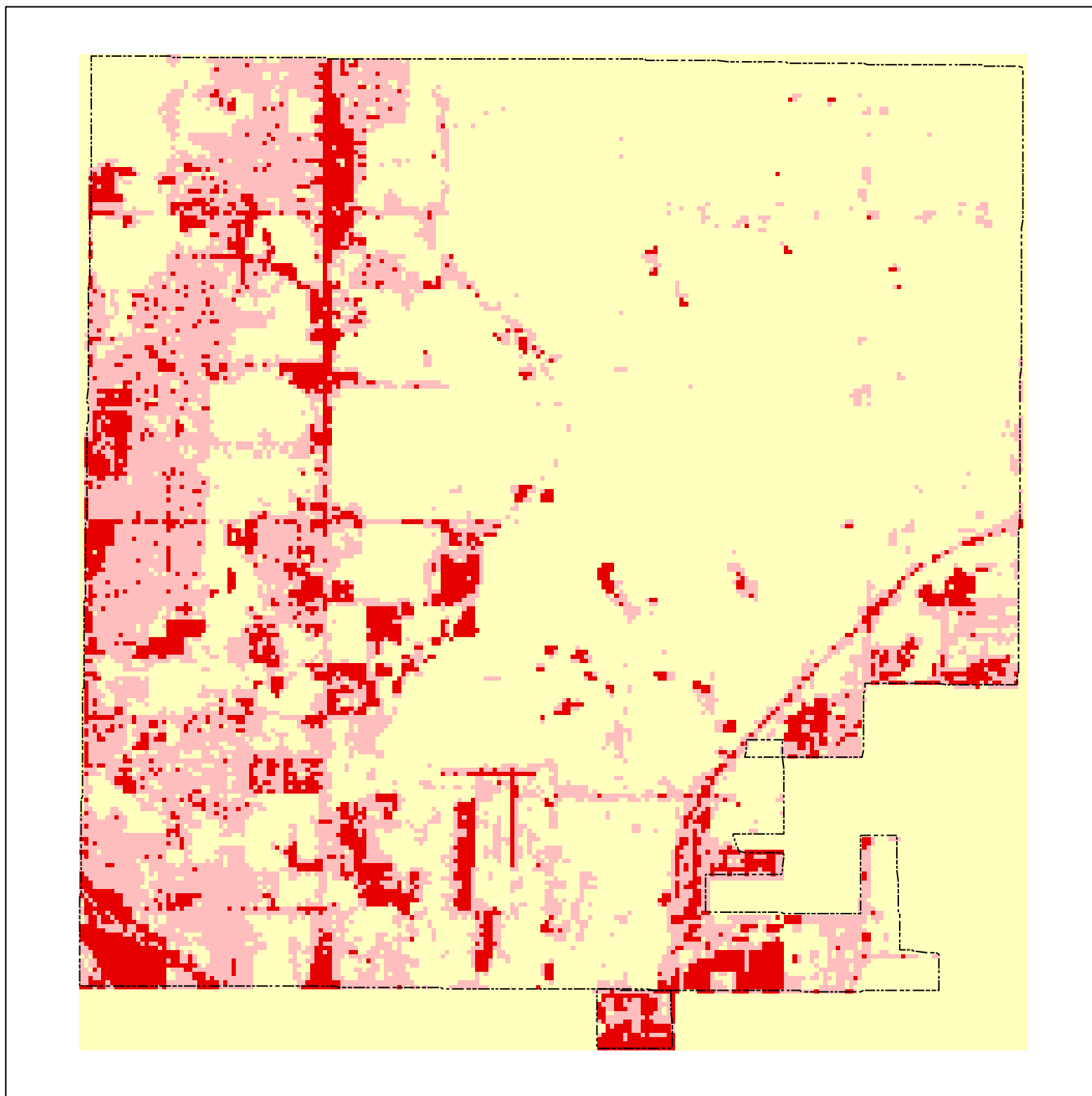
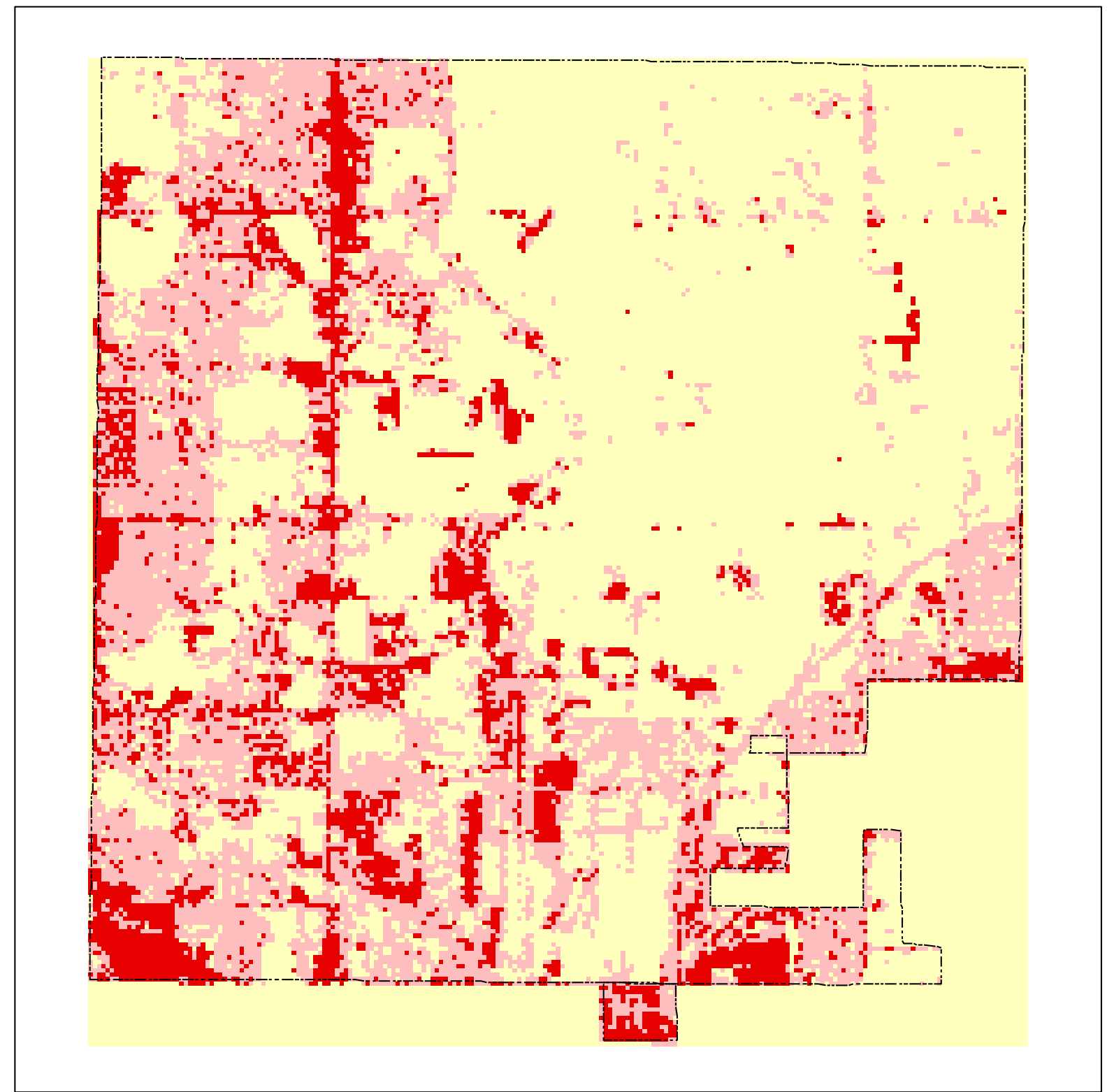


City of Blaine Impervious Coverage based on Satellite Remote Sensing

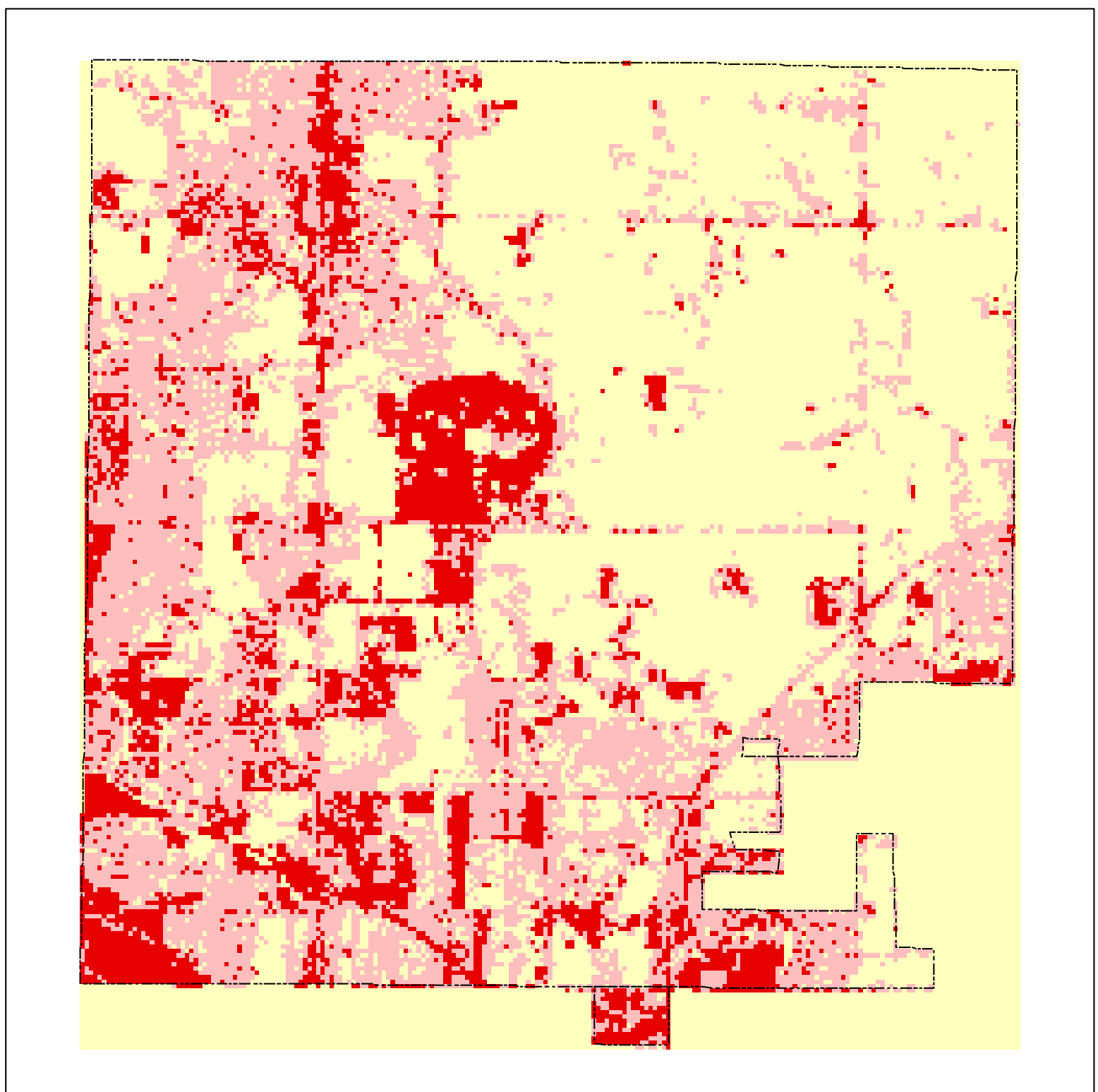
1986



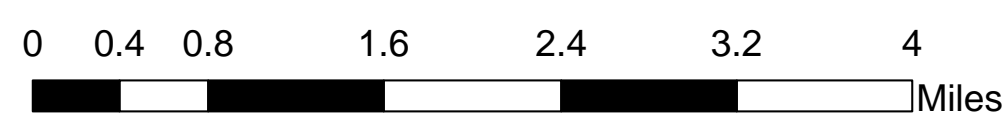
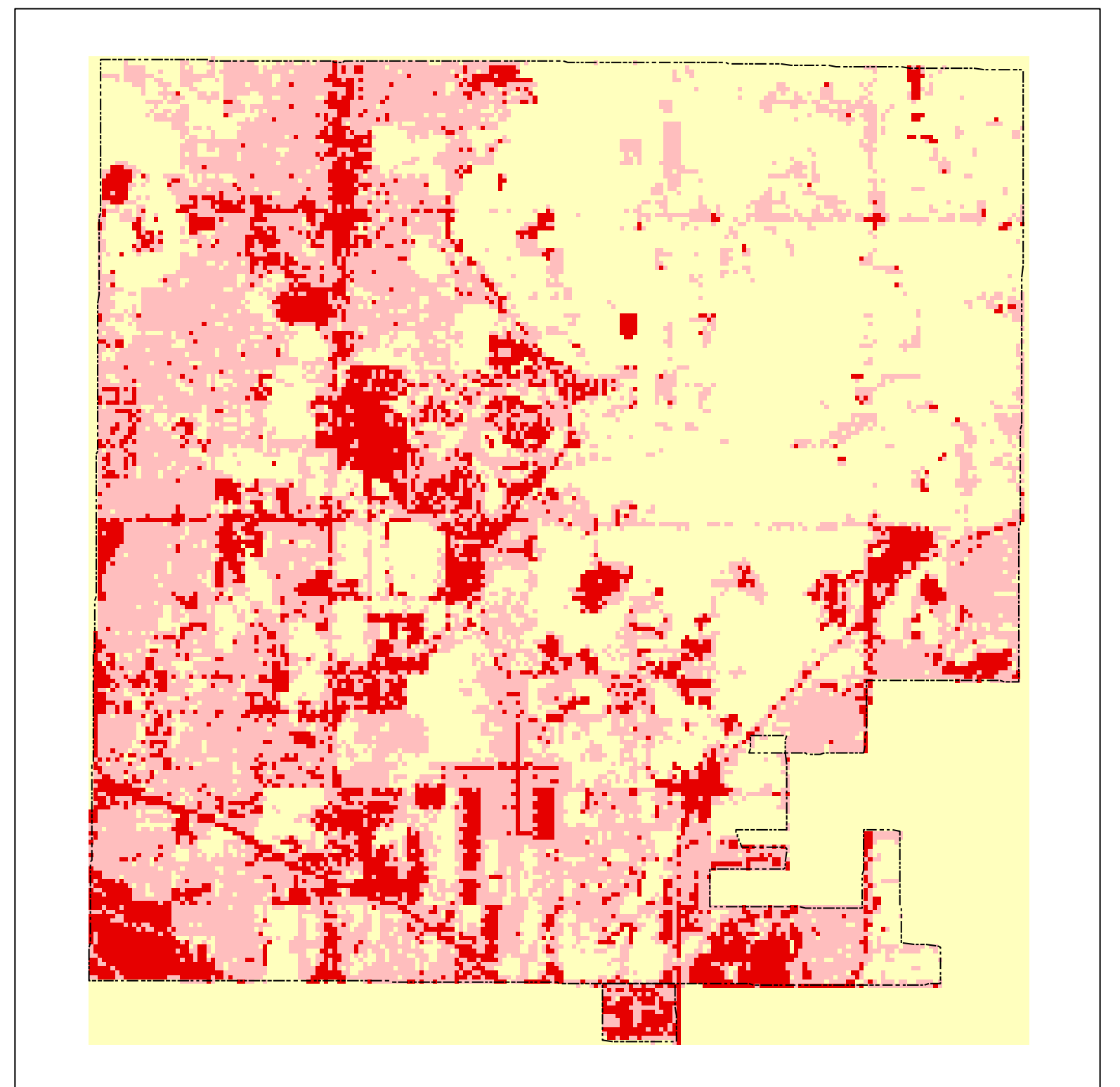
1991



1998



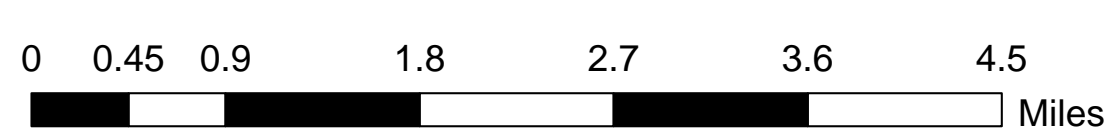
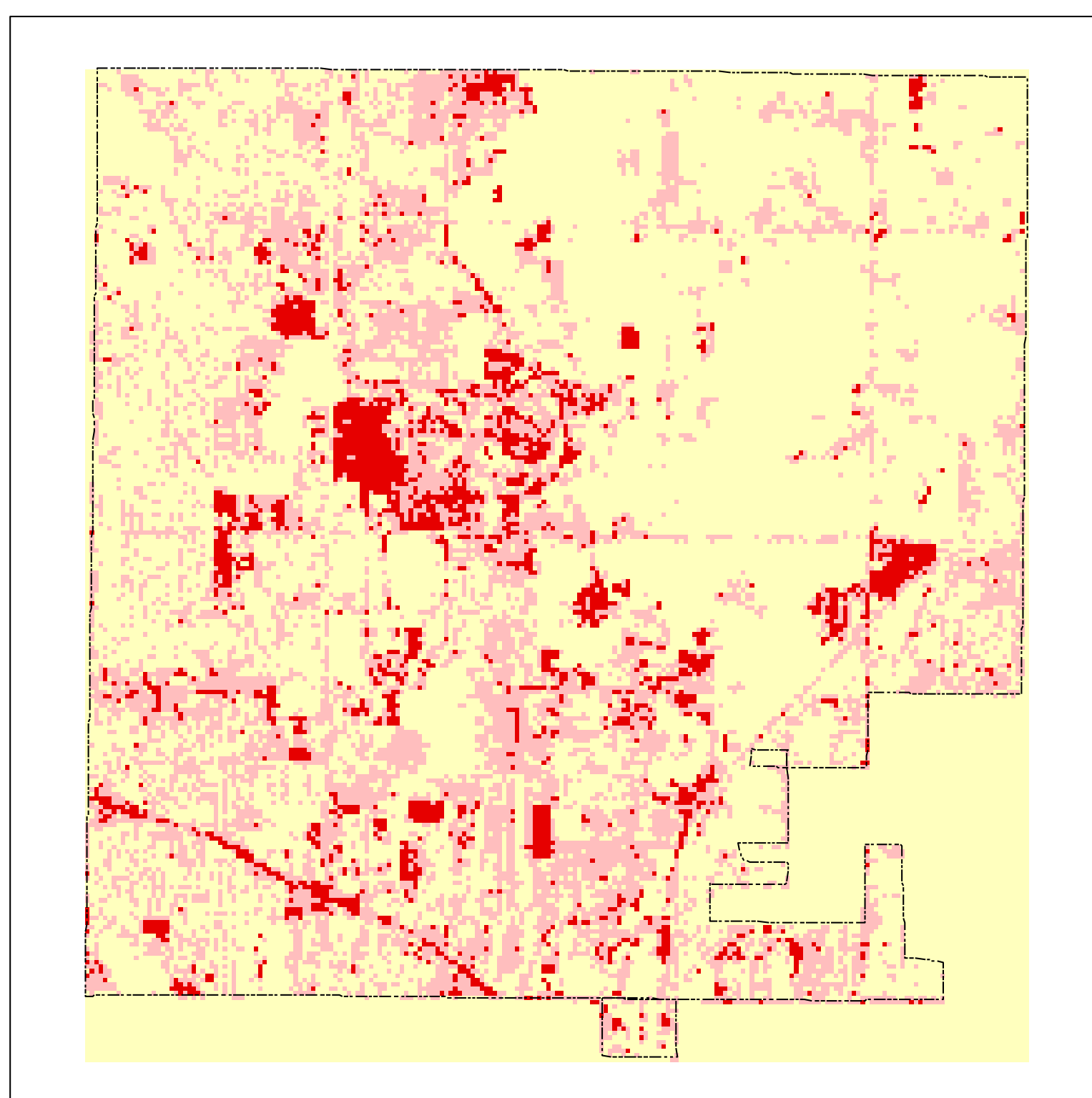
2002



1986 through 2002 Impervious Cover



Percent Change from 1986 to 2002



Impervious Acres					1986-2002 Change
Municipality	1986	1991	1998	2002	
Blaine	3030.0	3804.6	4680.1	4853.6	1823.6

% Change

