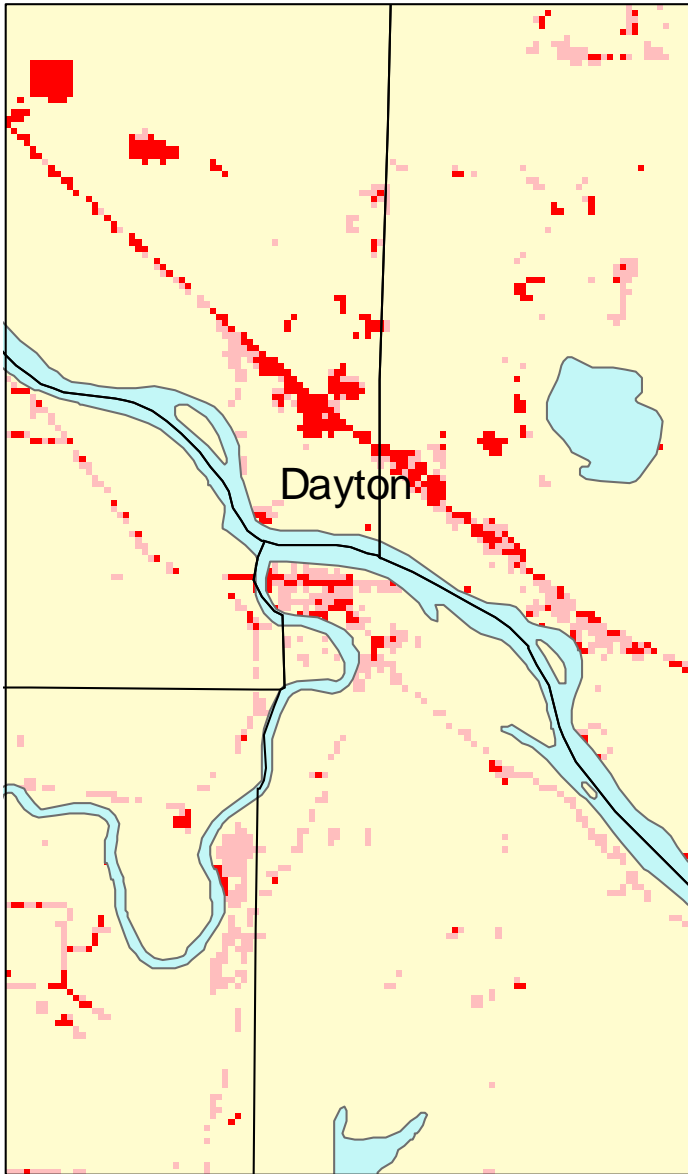
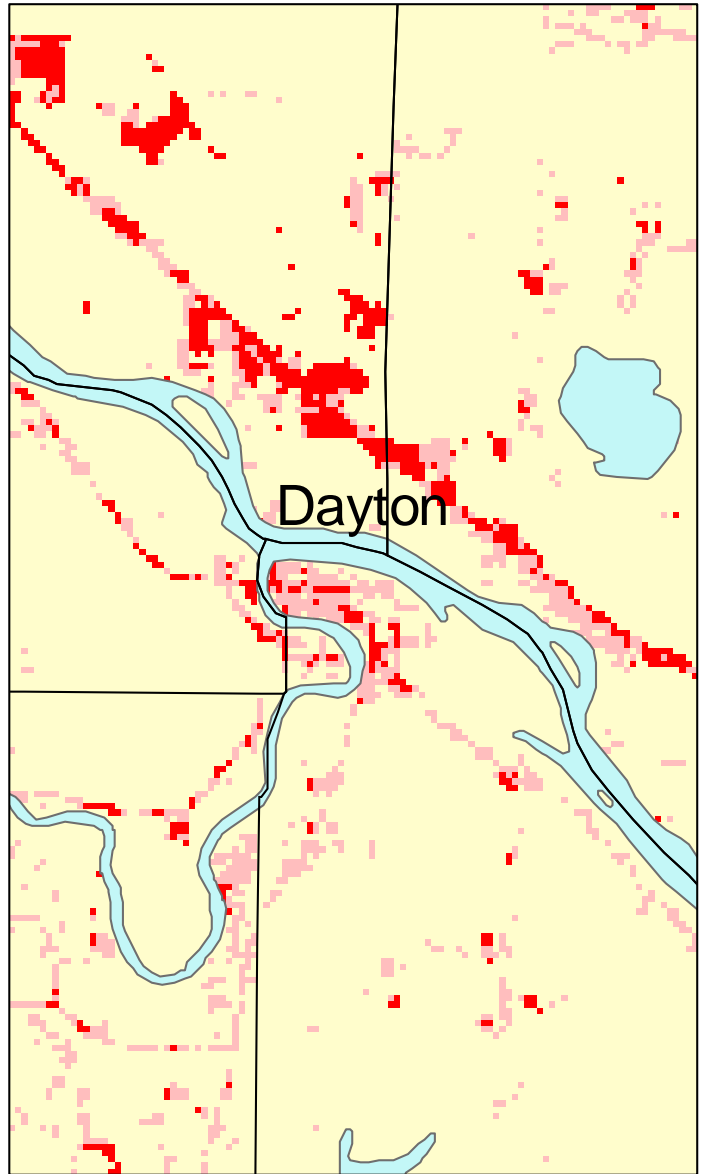


# Dayton, MN: Impervious Cover

## 1990



## 2000



Dayton Summary	
Total Area of MCD (Acres):	16095
1990 Impervious Area Total (Acres):	485
2000 Impervious Area Total (Acres):	526
1990 Percent Impervious Surface:	3%
2000 Percent Impervious Surface:	3%
<b>Increase in IC (Acres)</b>	<b>41</b>
<b>Percent Increase IC%</b>	<b>8%</b>

