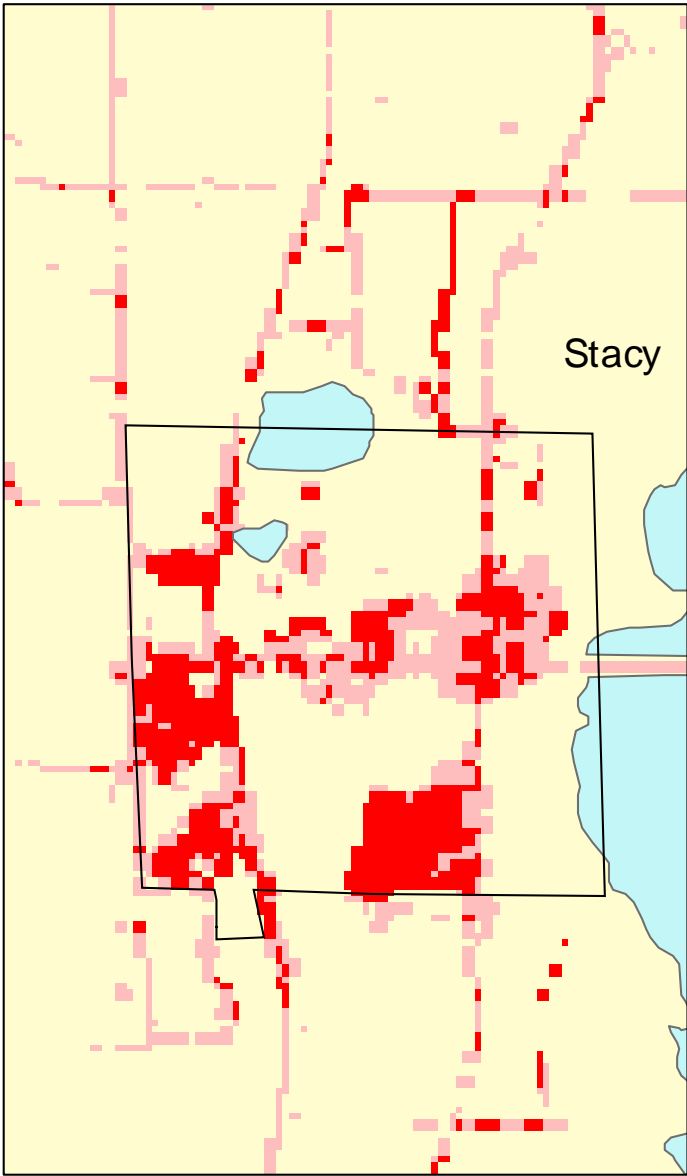
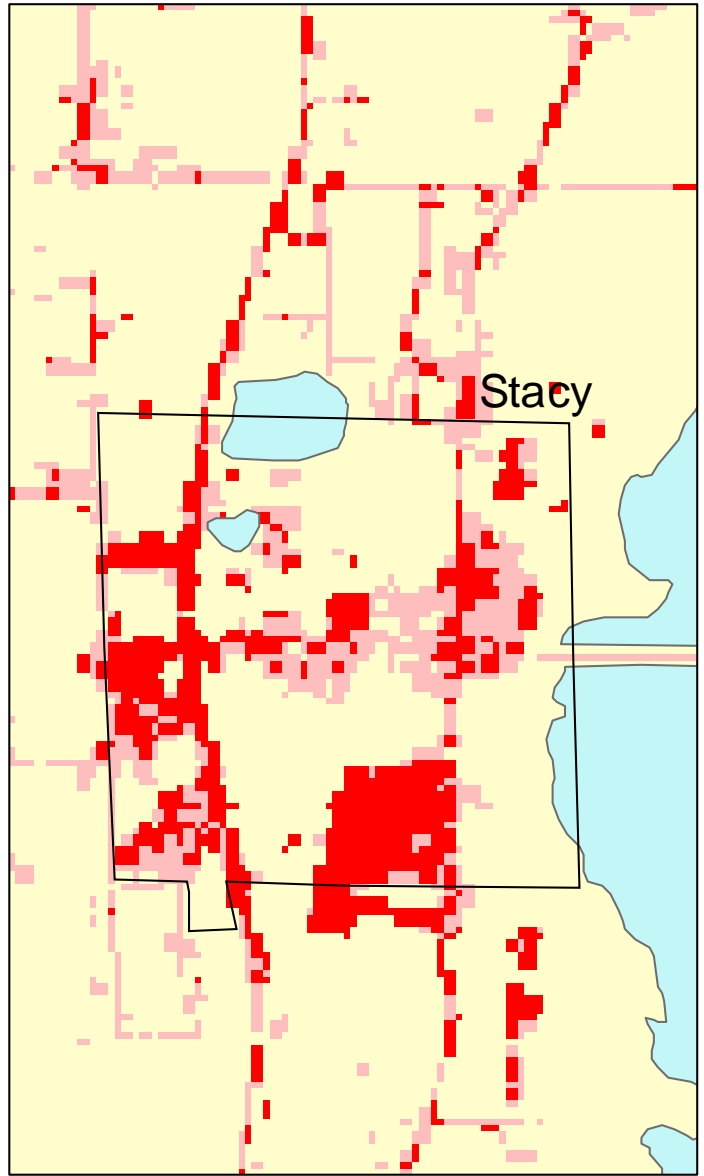


# Stacy, MN: Impervious Cover

1990



2000



Stacy Summary	
Total Area Of MCD (Acres):	735
1990 Impervious Area Total (Acres):	127
2000 Impervious Area Total (Acres):	155
1991 Percent Impervious Surface:	17%
2000 Percent Impervious Surface:	21%
<b>Increase In IC (Acres)</b>	<b>28</b>
<b>Percent Increase IC %</b>	<b>22%</b>

