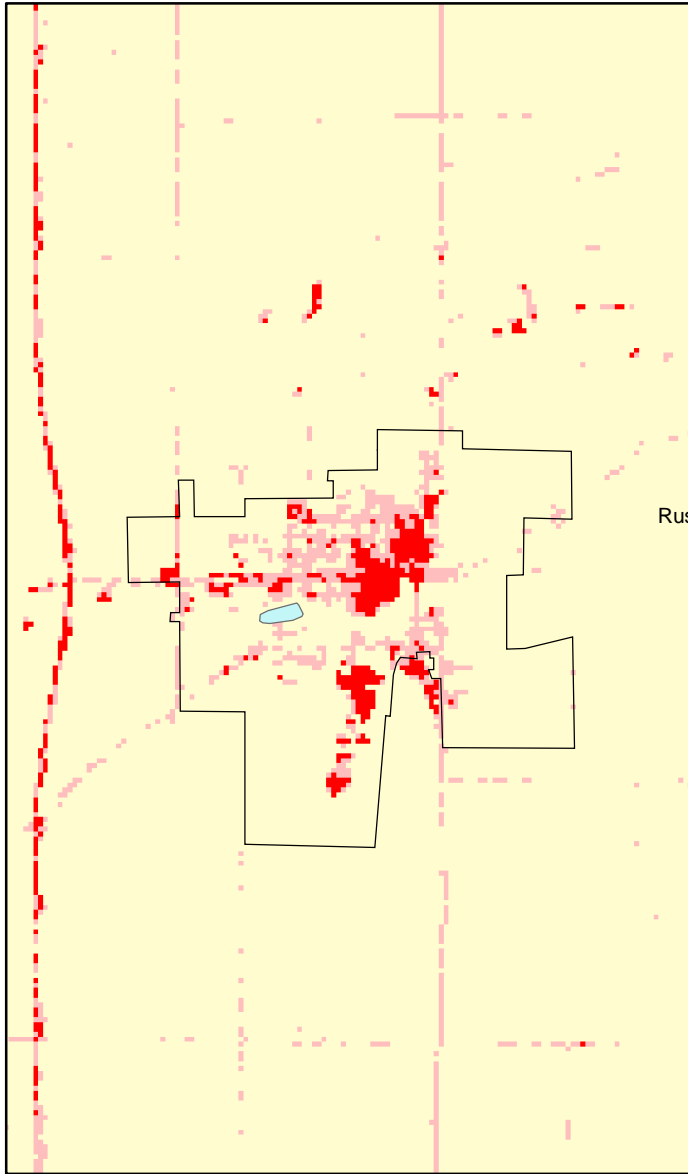
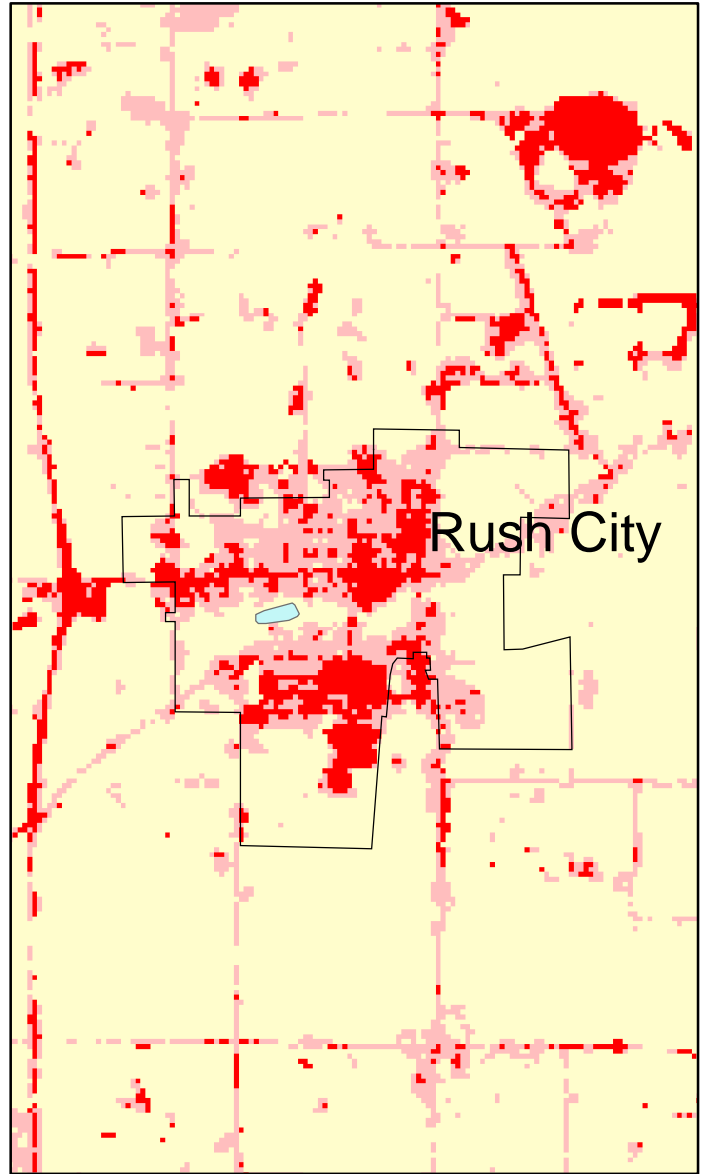


# Ruch City, MN: Impervious Cover

1990



2000



Rush City Summary	
Total Area Of MCD (Acres):	2320
1990 Impervious Area Total (Acres):	122
2000 Impervious Area Total (Acres):	440
1991 Percent Impervious Surface:	5%
2000 Percent Impervious Surface:	19%
<b>Increase In IC (Acres)</b>	<b>319</b>
<b>Percent Increase IC %</b>	<b>262%</b>

