

Meeting agenda

6:00	Welcome and introductions – <i>Dana Vanderbosch</i>
6:15	Presentation – <i>Katrina Hapka, Charles Peterson, Lisa Scheirer</i>
6:45	Question and answer session – <i>Anna Hotz, Lisa Scheirer</i>
7:55	Closing and final remarks – <i>Dana Vanderbosch</i>

**West River Dairy
environmental assessment worksheet (EAW)
& feedlot permit**

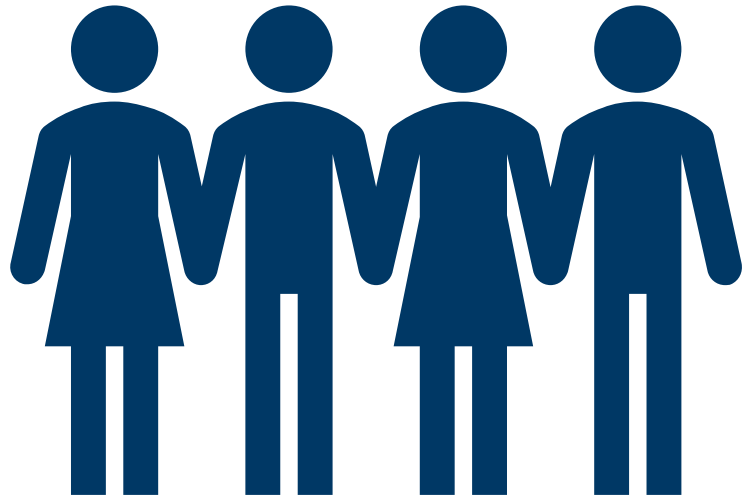


April 28, 2026



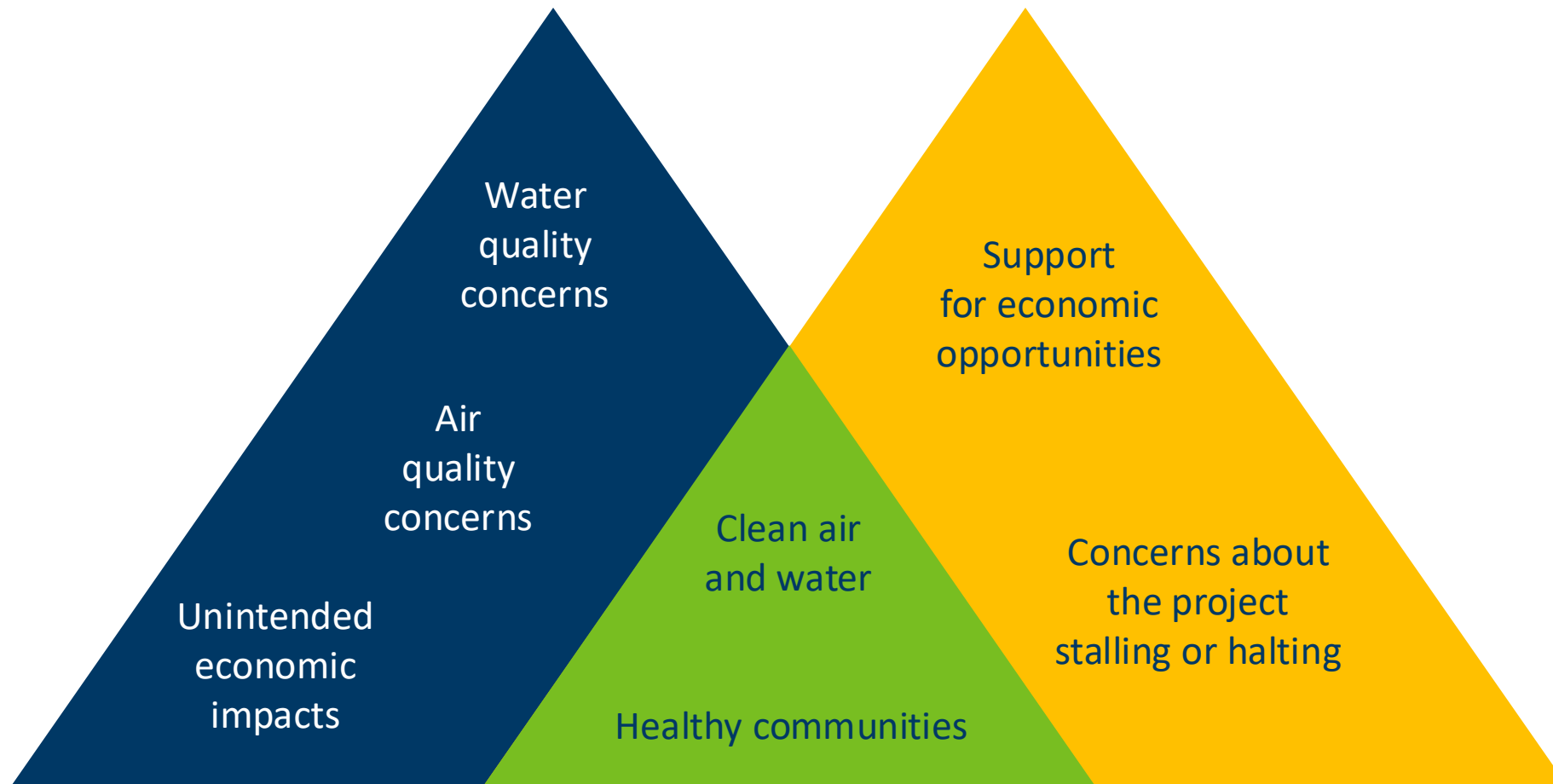
Welcome

We hear you



We received a variety of public comments for the EAW and feedlot permit.

Reviewing public comments



Shared values

Our first goal is to help you understand this proposed project and how the MPCA looked at potential **environmental effects**.

Our second goal is to answer your questions and ensure that you leave tonight knowing how to submit an effective **public comment** that will become part of the **public record**.

Brief presentation

- We will start with a brief presentation to provide context.

Q&A

- We will leave ample time to answer your questions.
- Raise a paddle.
- Write your question on a plain notecard.

Questions and comments at tonight's meeting **WILL NOT** be part of the public record.

Speaker lineup

Katrina Hapka



Charles Peterson



Lisa Scheirer



How it started





Riverview LLC submitted a **feedlot permit application** for the expansion of West River Dairy.

2

West River Dairy's expansion plans exceeded **1,000 animal units**, which triggered **environmental review**.



Environmental review

What is environmental review?

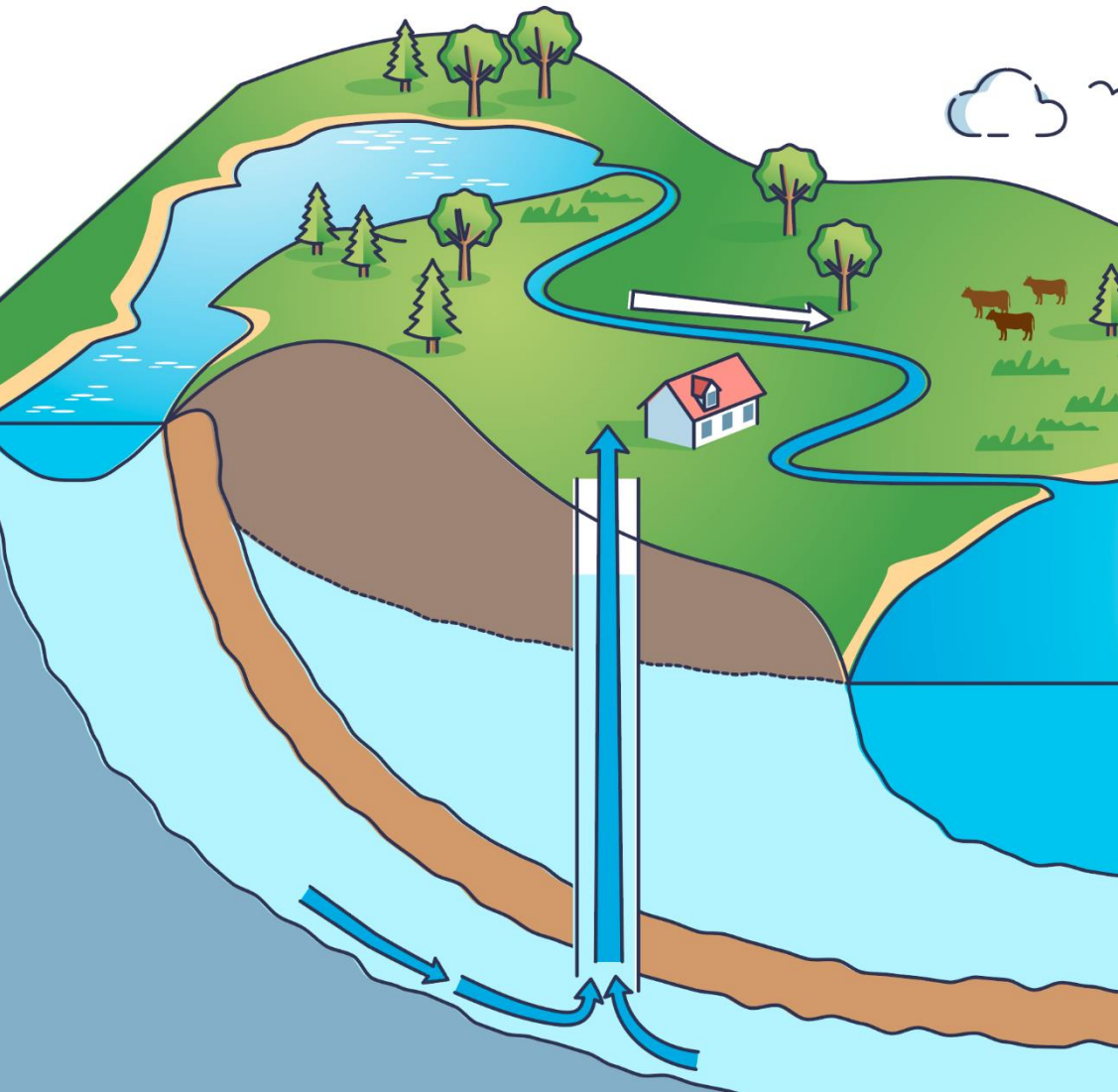
Environmental review is a fact-finding process the State of Minnesota uses to inform decision making.

Environmental
assessment
worksheet
(EAW)





Environmental review **is not** an approval process.



Water appropriations

- DNR has regulatory authority
- DNR water appropriations permit
- Aquifer test
- Impact to Pomme de Terre River
- Clean water storage ponds

Water quality

- MPCA has regulatory authority
- MPCA individual feedlot permit
- Includes engineered designed liners for storage structures
- Prevent discharges except in extreme events
- Comprehensive nutrient management plan





Stormwater

- Temporary and permanent stormwater controls in feedlot permit
- Capture and reuse most runoff
- Estimate 90 million gallons per year capture and reuse

Manure management

Liquid manure and process wastewater stored in below-ground earthen and concrete-lined storage structures

Solid manure stored on above-ground concrete-lined pads

Manure applied to surrounding cropland at agronomic rates





Air & odor emissions

- Manure basin covers, manure separation process
- Manure removal system, good housekeeping practices
- All liquid manure is pumped through hoses to cropland, injected during application

Climate change and greenhouse gases

Adaptation, resilience, mitigation

- Stormwater basins 20% larger than required
- Roughly 3,400 extra manure application acres
- Alfalfa conversion carbon sink, area ammonia replacement



Other environmental topics considered



- Land use
- Fish, wildlife, plant communities, and sensitive ecological resources
- Historic and cultural resources
- Visual
- Noise
- Transportation

The **MPCA commissioner** makes the final decision on the adequacy of the EAW based on four criteria in Minnesota law.

1. Type, extent, and reversibility
2. Cumulative potential effects
3. The extent to which the environmental effects are subject to mitigation
4. The extent to which environmental effects can be anticipated and controlled

Feedlot permit

The feedlot permit and environmental review move forward together, **but no permits may be issued until environmental review is complete.**



Elements of the feedlot permit

Key criteria to protect waters

- Manure and process wastewater storage
- Manure management plan
- Land application of manure practices



Manure and process wastewater storage



Prevent discharges to waters

- Contain and store all manure/process wastewater for at least nine months
- Prohibit discharges except in extreme events
- Require protective storage structure liners

Manure management plan



Prevent pollution of waters

- **Plan rate** of application
- **Plan timing** of application
- **Plan location** of application

Land application of manure practices

Prevent manure from leaving field

- Setbacks from waters and wells
- In-field inspections and reporting
- Nitrogen best management practices
- Recordkeeping



Odors: What the feedlot permit regulates

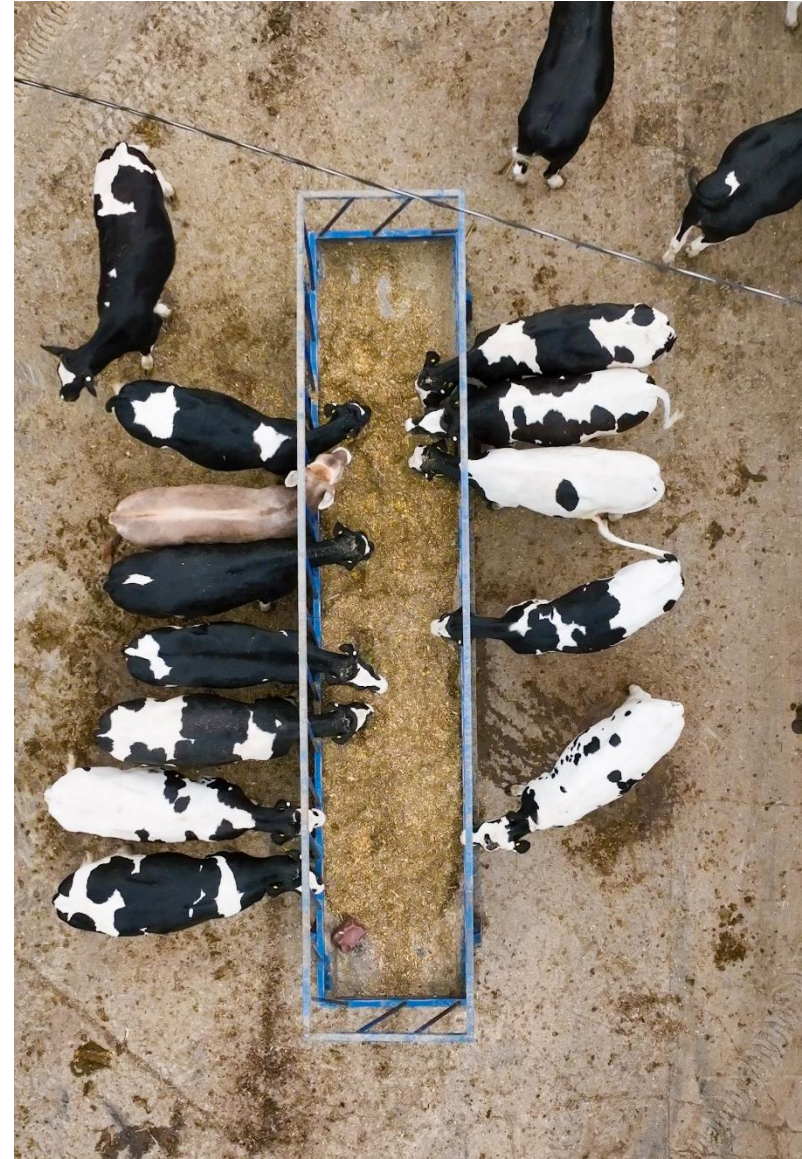
The MPCA has limited authority to regulate odor. **Hydrogen sulfide is the exception.**

For this project, West River Dairy must:

- Implement an air emissions plan
- Implement practices to mitigate odors and control emissions

Examples of controls:

- Covered manure storage areas
- Remove solids from liquid manure storage



Public comment



Public comment open through May 7, 2026.

- Submit comments in writing.
- Submit online using the QR code or use the form at your table.
- Turn in forms before you leave tonight.

We will review and respond to all comments.



How to make an effective comment

Focus on facts

Identify gaps

Add details

How your comments may differ

EAW

- Address the accuracy.
- Identify missing components.
- Determine if an EIS is needed.

Permit

- Address specific conditions.
- Suggest draft revisions.

Q&A



Panel lineup

Anna Hotz



Katrina Hapka



Lisa Scheirer



Meeting norms



- Keep questions and comments respectful and productive.
- Do not interrupt others while they are speaking.
- Limit your comments to two minutes per speaker.

Join the MPCA's West River Dairy email list. We will share:

- Findings of fact
- Future updates as the project progresses

You must opt in to receive updates.

- Sign in using the QR code on the screen.
- Enter your email on the list that was circulating.



Thank you

