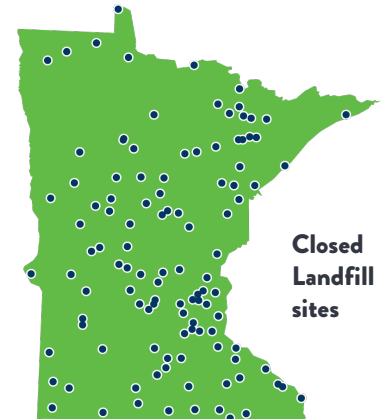




Maintain closed landfills across Minnesota

Ensuring access to the Closed Landfill Investment Fund will allow the MPCA to continue to protect communities and groundwater from closed landfills.



RECOMMENDATION

Make CLIF funds available in 2025 and beyond.

Clarify statutory language to give the MPCA access to the Closed Landfill Investment Fund (CLIF) beyond fiscal year 2025.

Challenge

Closed landfills produce contaminated fluids (leachate) and gases that must be managed in perpetuity to avoid polluting groundwater or affecting nearby structures. CLIF makes this essential work possible, but access to these funds will end in 2025 without legislative action.

Why it's important

Access to the CLIF makes maintenance and emergency response possible at 112 closed landfills across Minnesota. MPCA needs flexibility to be able to address environmental responses, including human health and environmental emergencies, that cannot wait for an appropriation in a future legislative session.

Who is impacted

Minnesotans living near the state's 112 closed landfills, as well as other Minnesotans who rely on groundwater for drinking water, benefit from ongoing safety and maintenance of these sites.

Tom Johnson

Government Relations Director

tom.e.johnson@state.mn.us

651-338-8955

Alexis Donath

Legislative Coordinator

alexis.donath@state.mn.us

651-373-9277