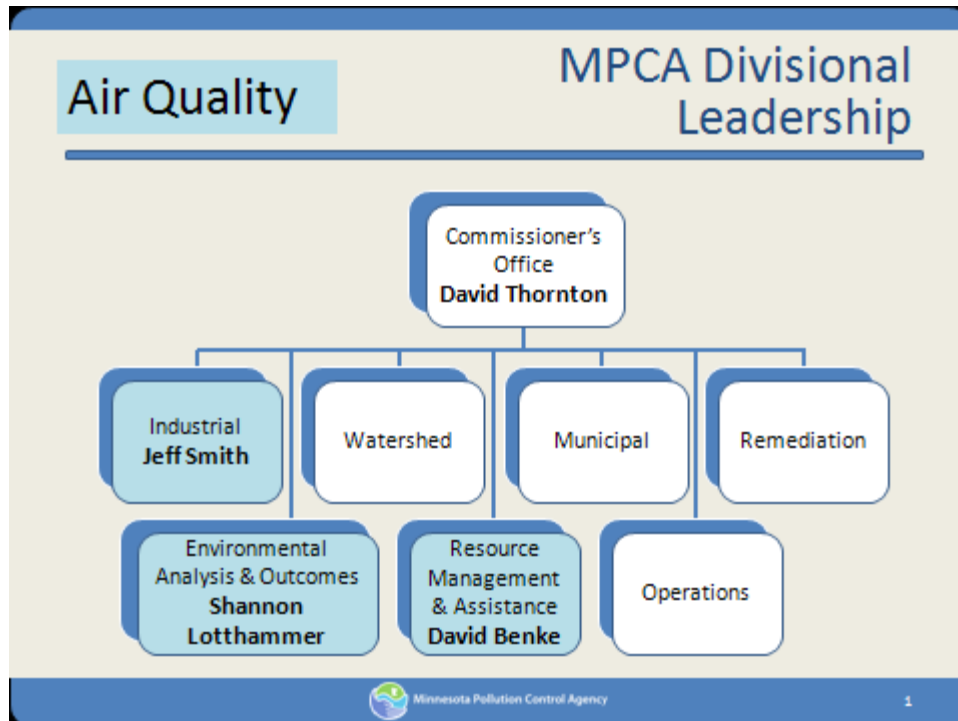




MPCA Matrix Organization

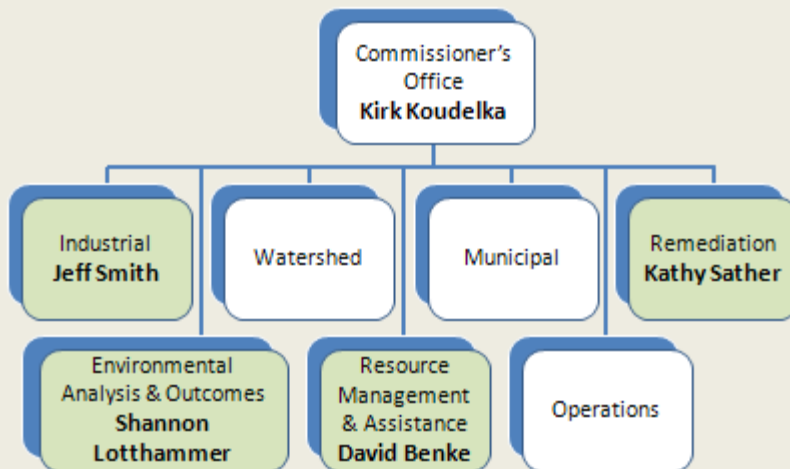


- ## Air Quality Program Contacts
- Air ambient program
 - Frank Kohlasch, Manager
Environmental Analysis and Outcomes
 - Air quality point source program
 - Don Smith, Manager
Industrial
- Minnesota Pollution Control Agency 2



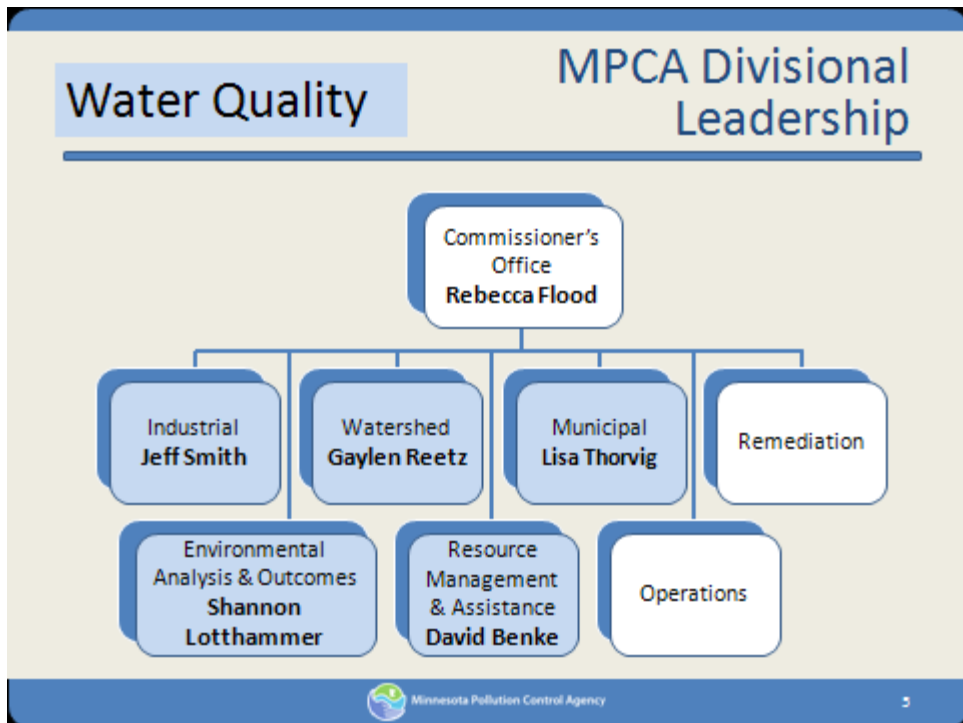
Land and Waste

MPCA Divisional Leadership



Land and Waste Program Contacts

- ❑ Closed landfill program
 - Steve Lee
Remediation manager
- ❑ Emergency response program
 - Steve Lee
Remediation manager
- ❑ Hazardous waste program
 - Vacant (Jeff Connell)
Industrial manager
- ❑ Petroleum remediation program
 - Michael Kanner
Remediation manager
- ❑ Solid waste program
 - Steve Giddings
RMA manager
- ❑ Superfund/RCRA corrective action program
 - Vacant (Jeff Lewis)
Remediation manager
- ❑ Tanks compliance/enf. program
 - Vacant (Jeff Connell)
Industrial manager
- ❑ Voluntary investigation and cleanup program
 - Vacant (Jeff Lewis)
Remediation manager

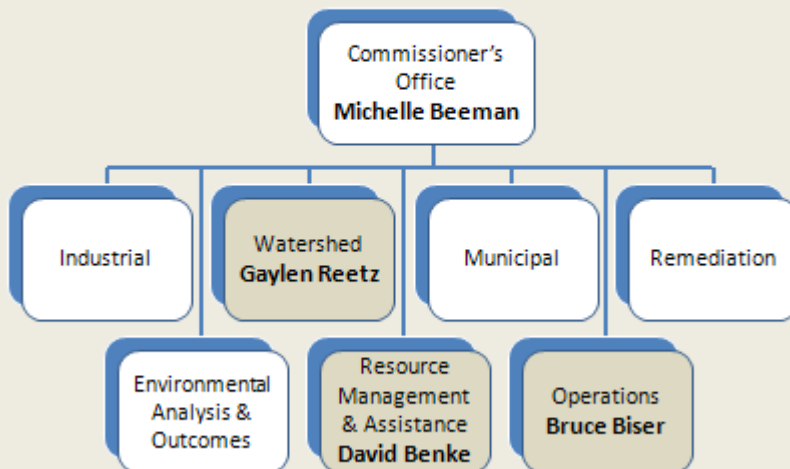


- ## Water Program Contacts
- ❑ Feedlot program
 - Randy Hukriede
Watershed manager
 - ❑ Groundwater program
 - Glenn Skuta
EAO manager
 - ❑ Nonpoint/Watershed program
 - Doug Wetzstein
Watershed manager
 - ❑ Stormwater program
 - Beth Lockwood
Municipal manager
 - ❑ Subsurface sewage treatment system program
 - Jim Ziegler
Municipal manager
 - ❑ Surface water ambient program
 - Glenn Skuta
EAO manager
 - ❑ TMDL/WRAPS program
 - Gaylen Reetz
Watershed manager
 - ❑ Wastewater point source program
 - Wendy Turri
Municipal manager
- Minnesota Pollution Control Agency 6



Assistance and Operations

MPCA Divisional Leadership



Assistance and Operations Contacts

- ❑ Administrative operations
 - Cathy Moeger
Operations assistant CFO
- ❑ Communications
 - Dave Verhasselt
Operations manager
- ❑ Community and business asst.
 - Rick Patraw
RMAD manager
- ❑ Data management
 - Todd Biewen
EAO manager
- ❑ Information technology
 - Darrell Johnson
MN.IT @ MPCA
- ❑ Toxics reduction
 - Steve Giddings
RMAD manager