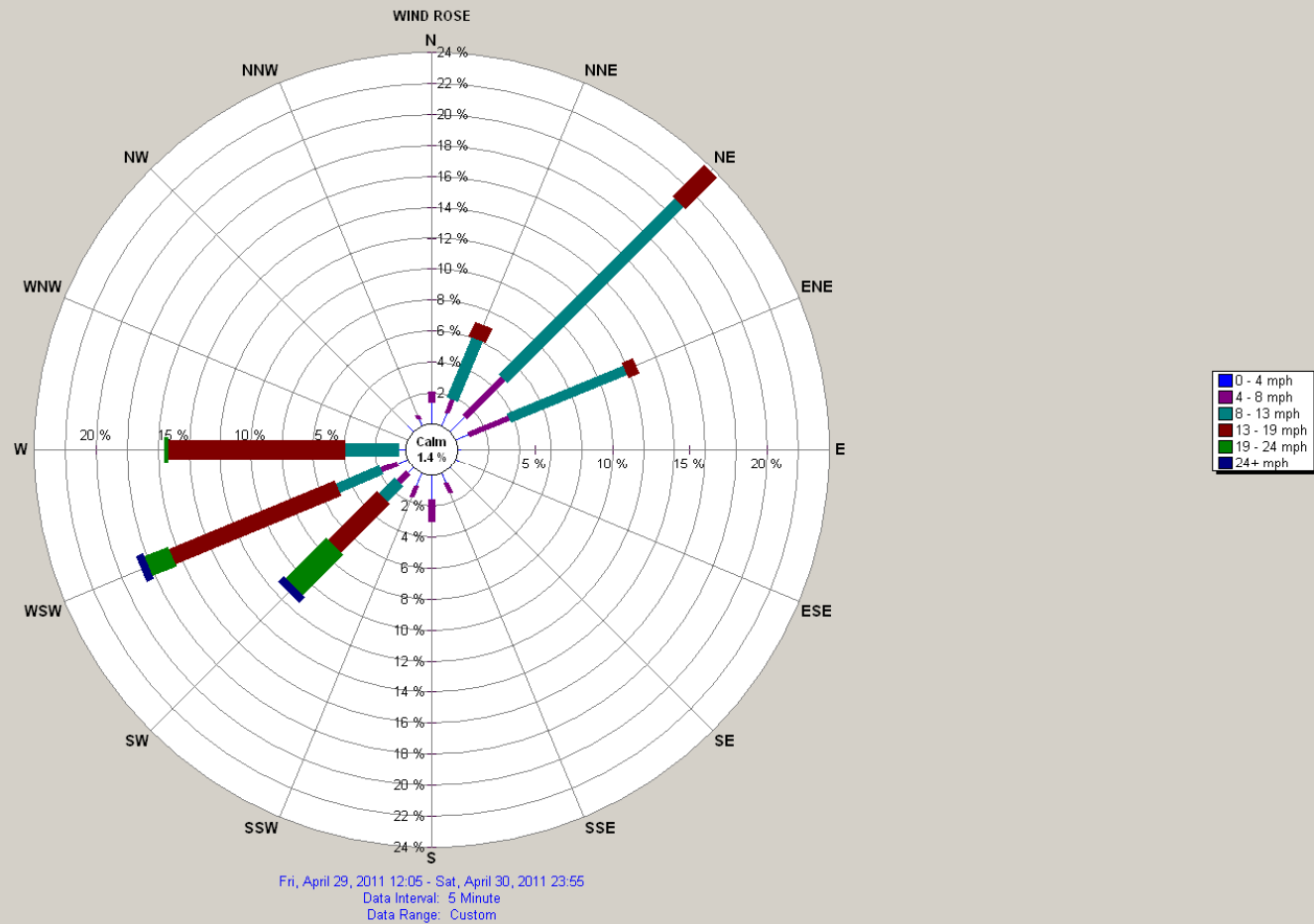
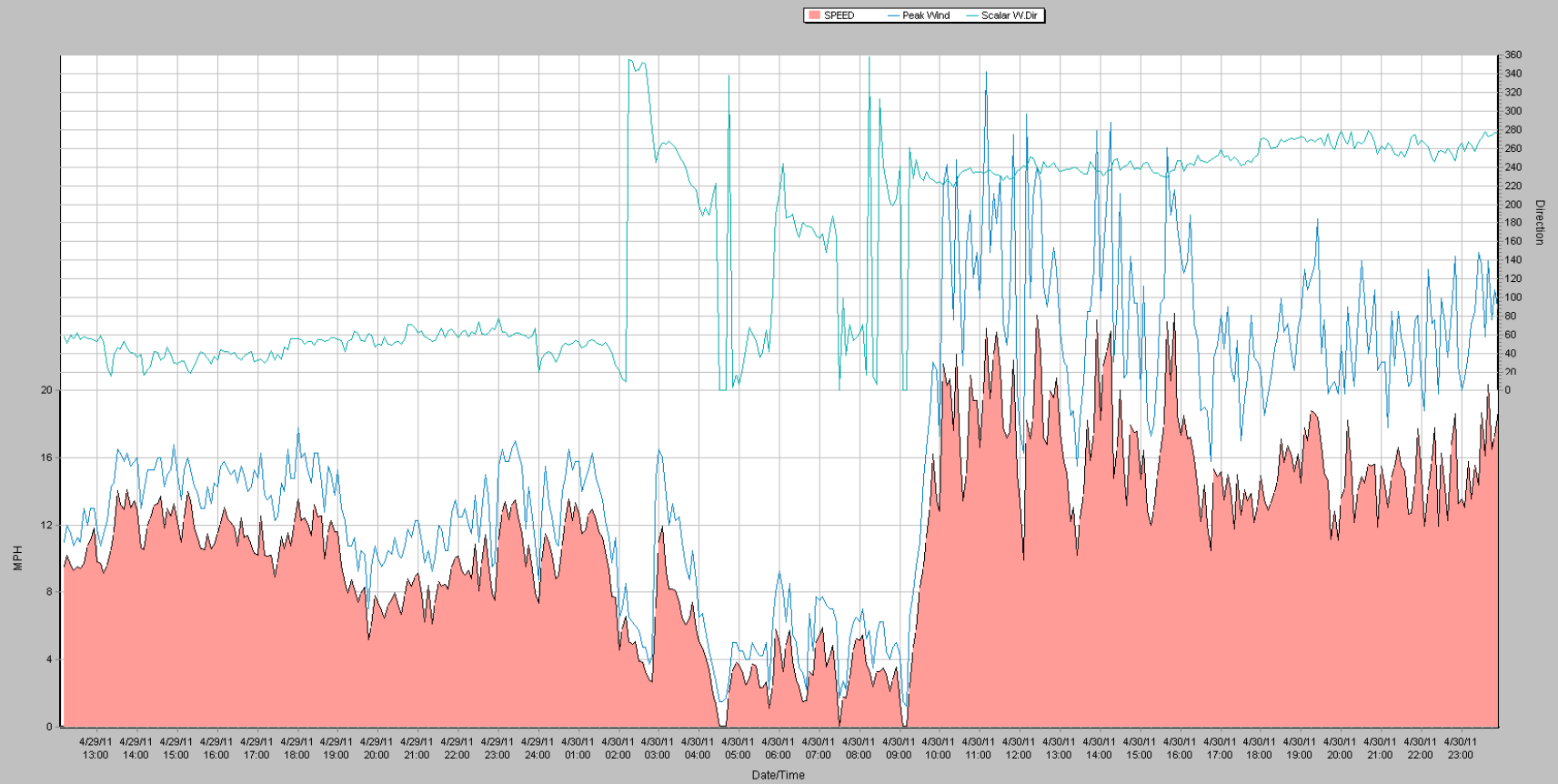


April 2011 Weather Graphs

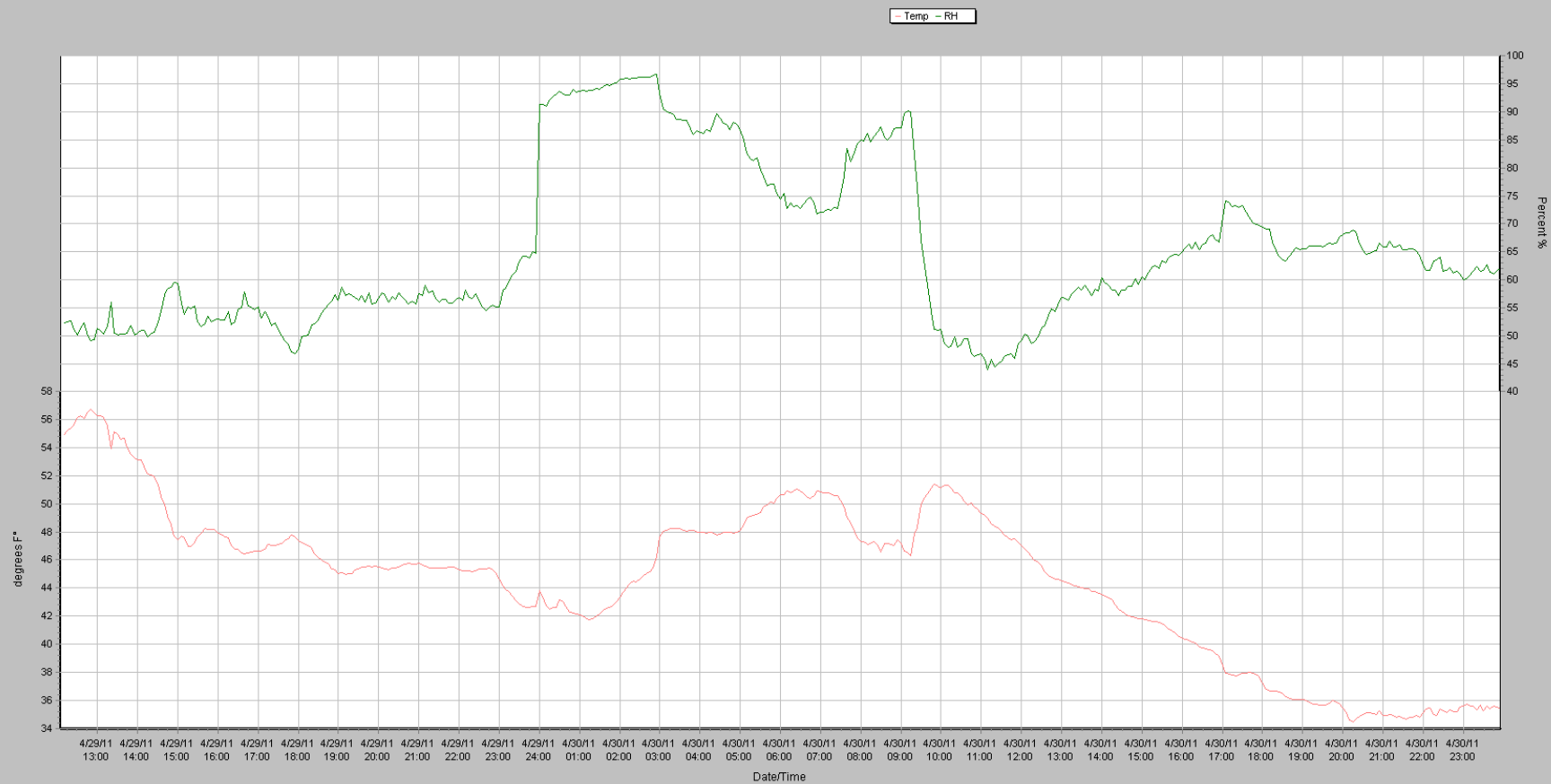
USS Spirit Lake Meteorological Station



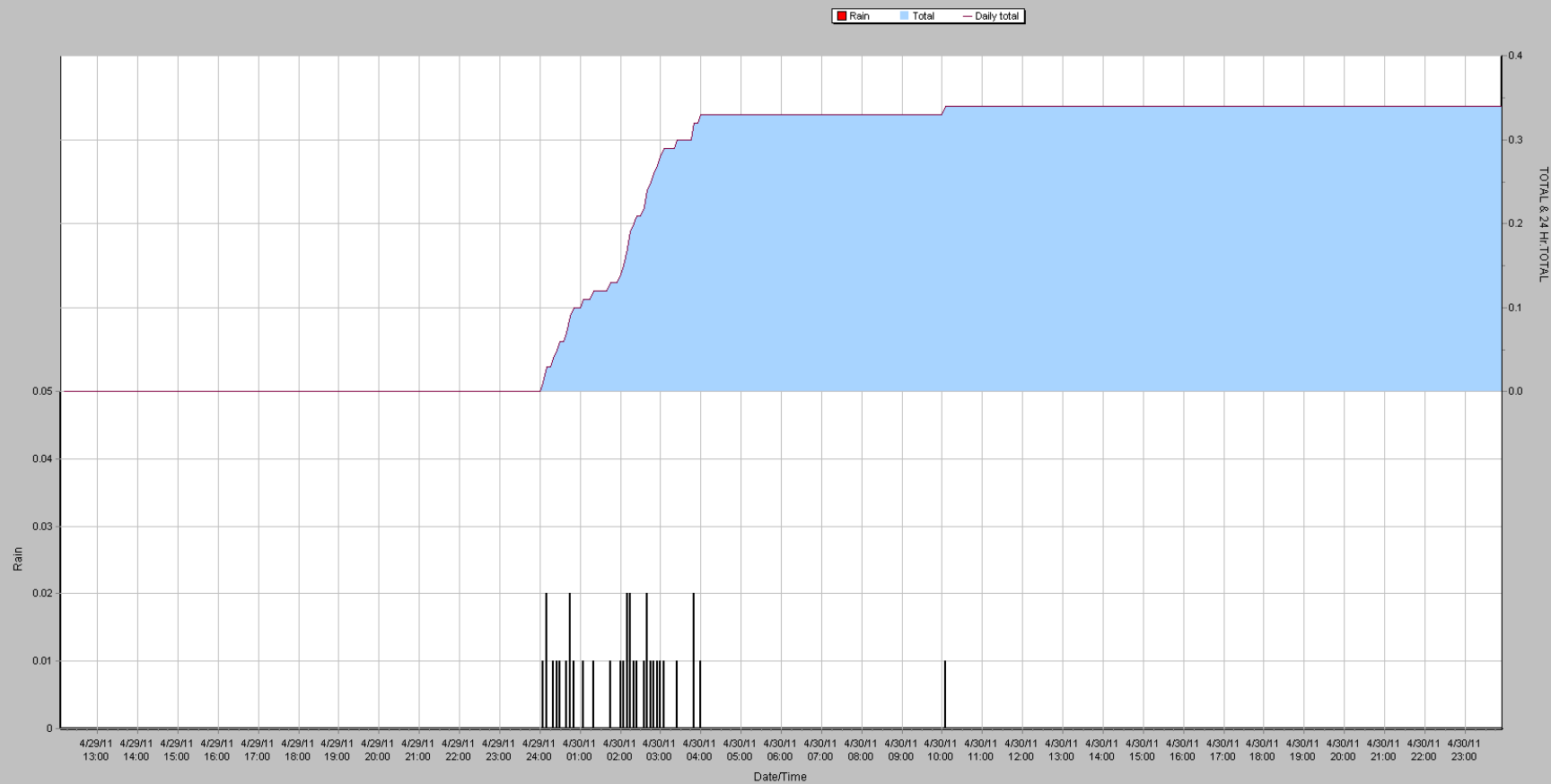
Wind Speed / Wind Direction
(5 Minute Data Interval)



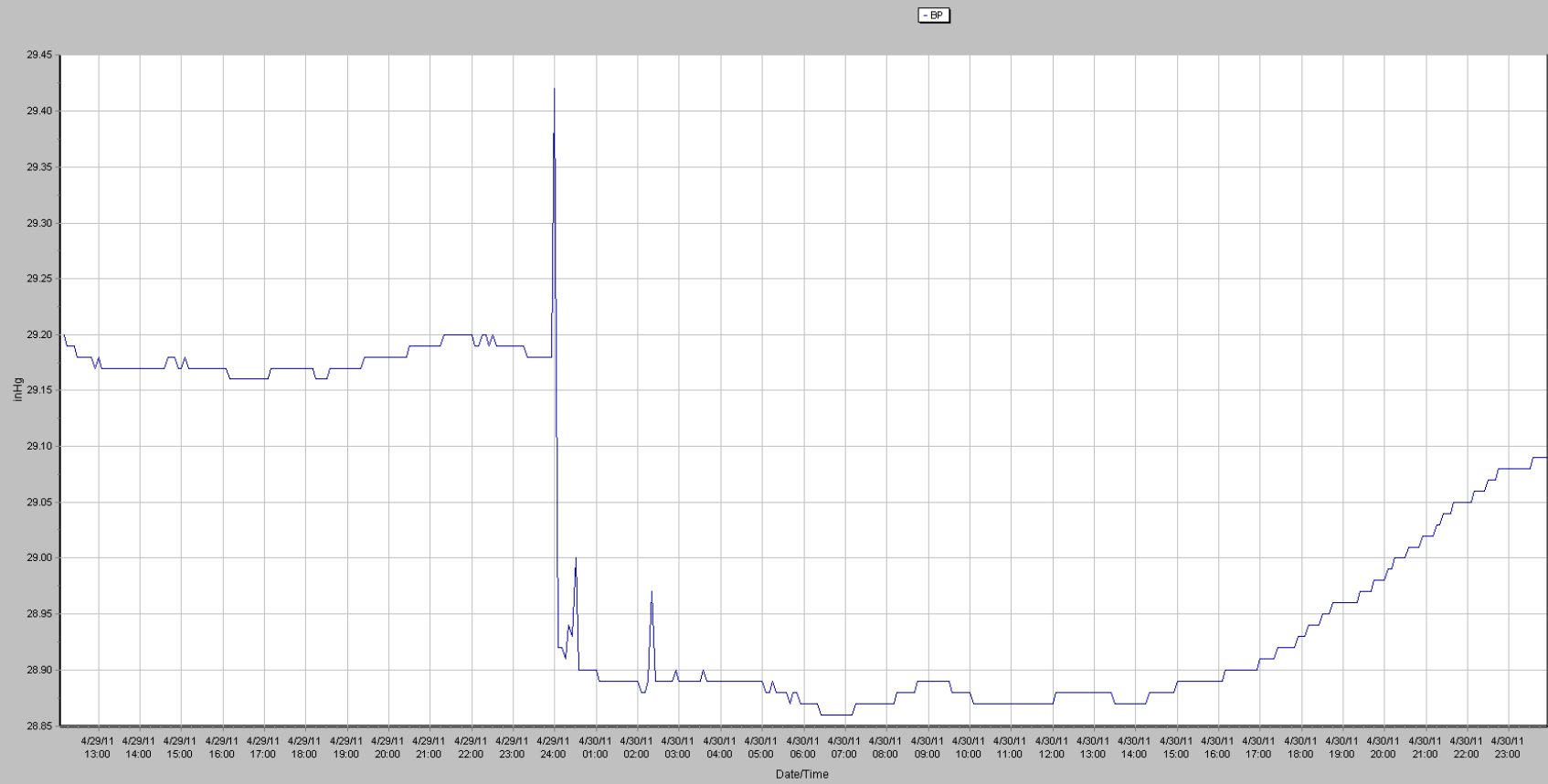
Temperature / Relative Humidity
(5 Minute Data Interval)



Precipitation and Totals
(5 Minute Data Interval)

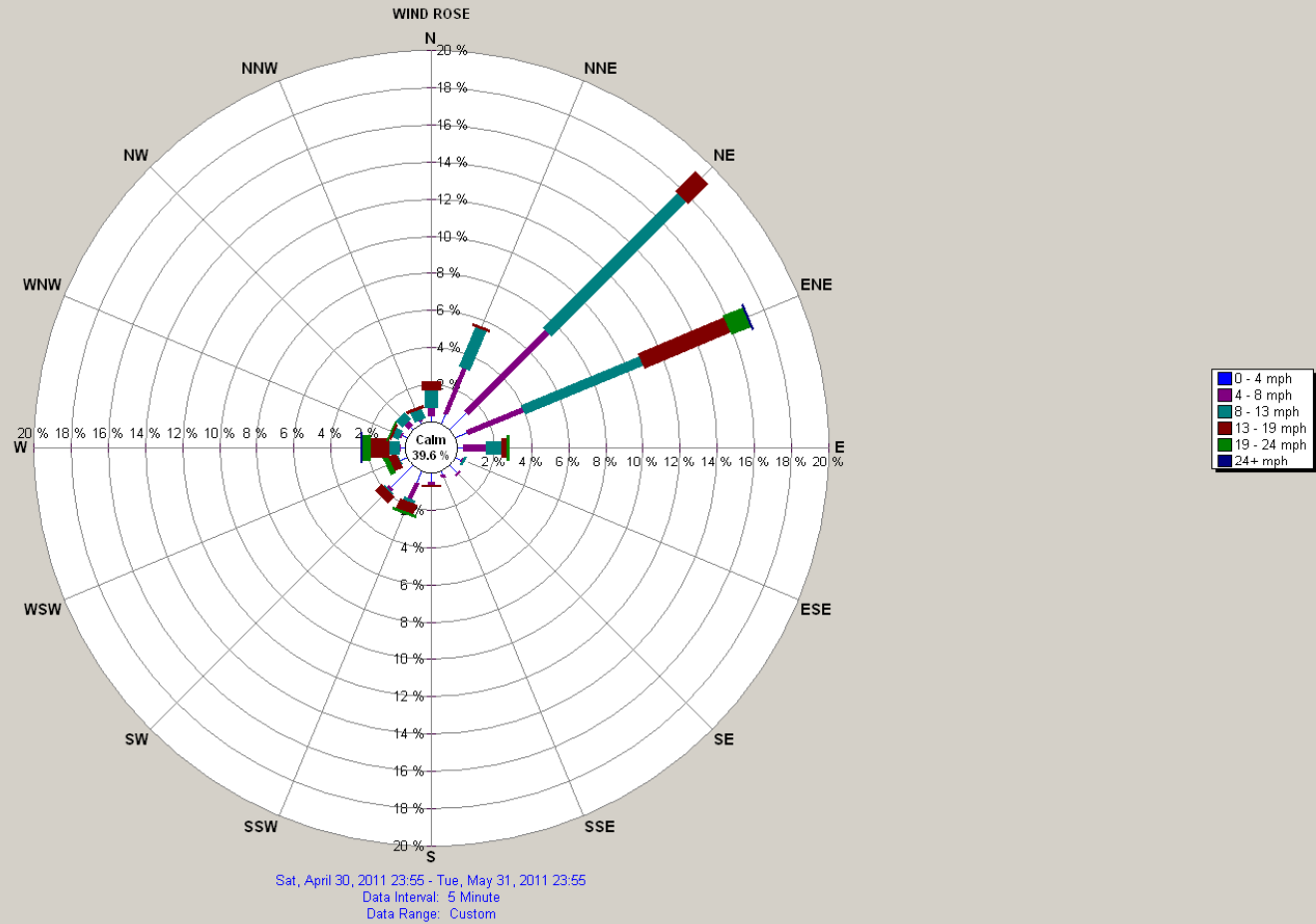


Barometric Pressure
(5 Minute Data Interval)

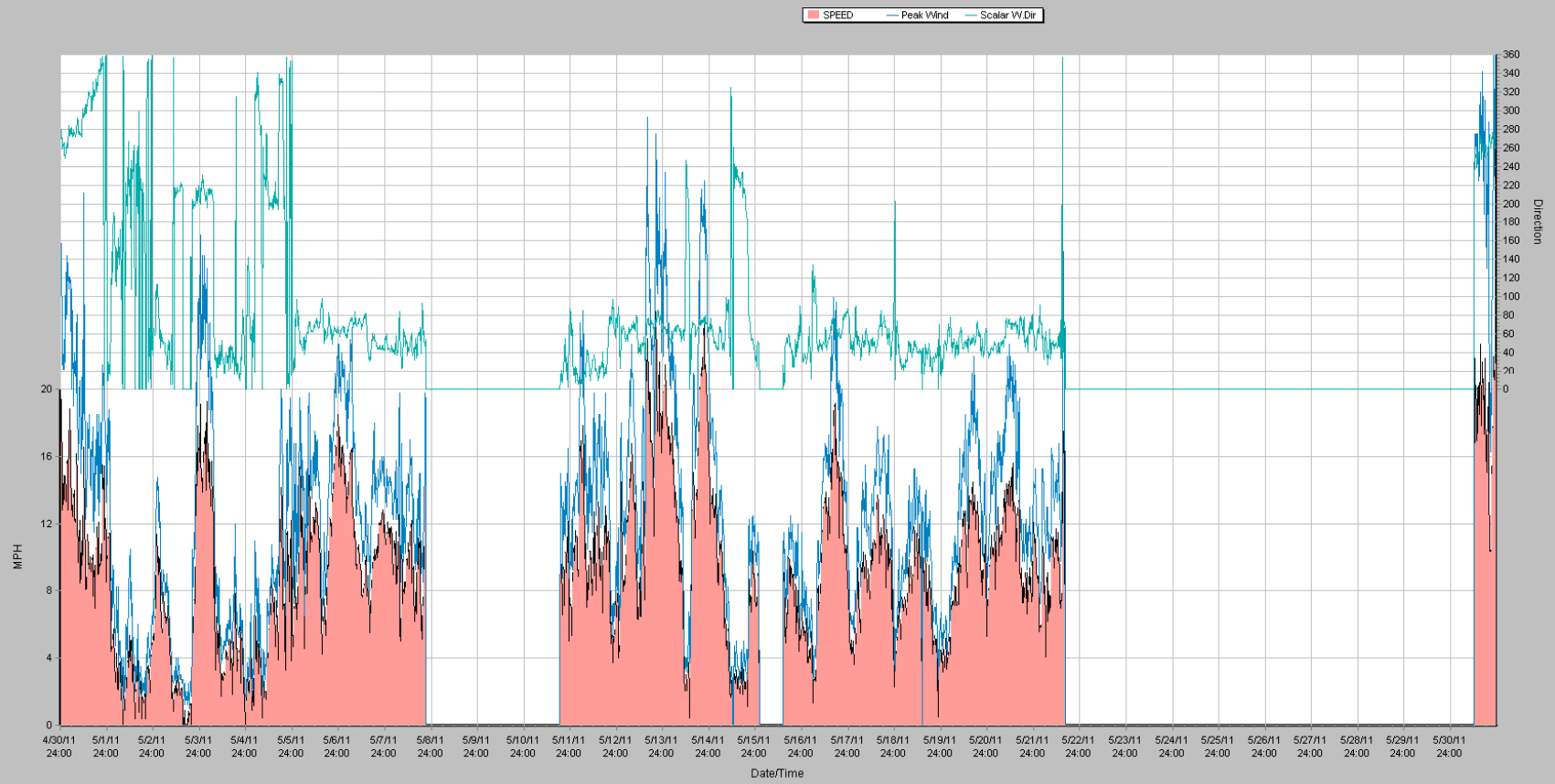


May 2011 Weather Graphs

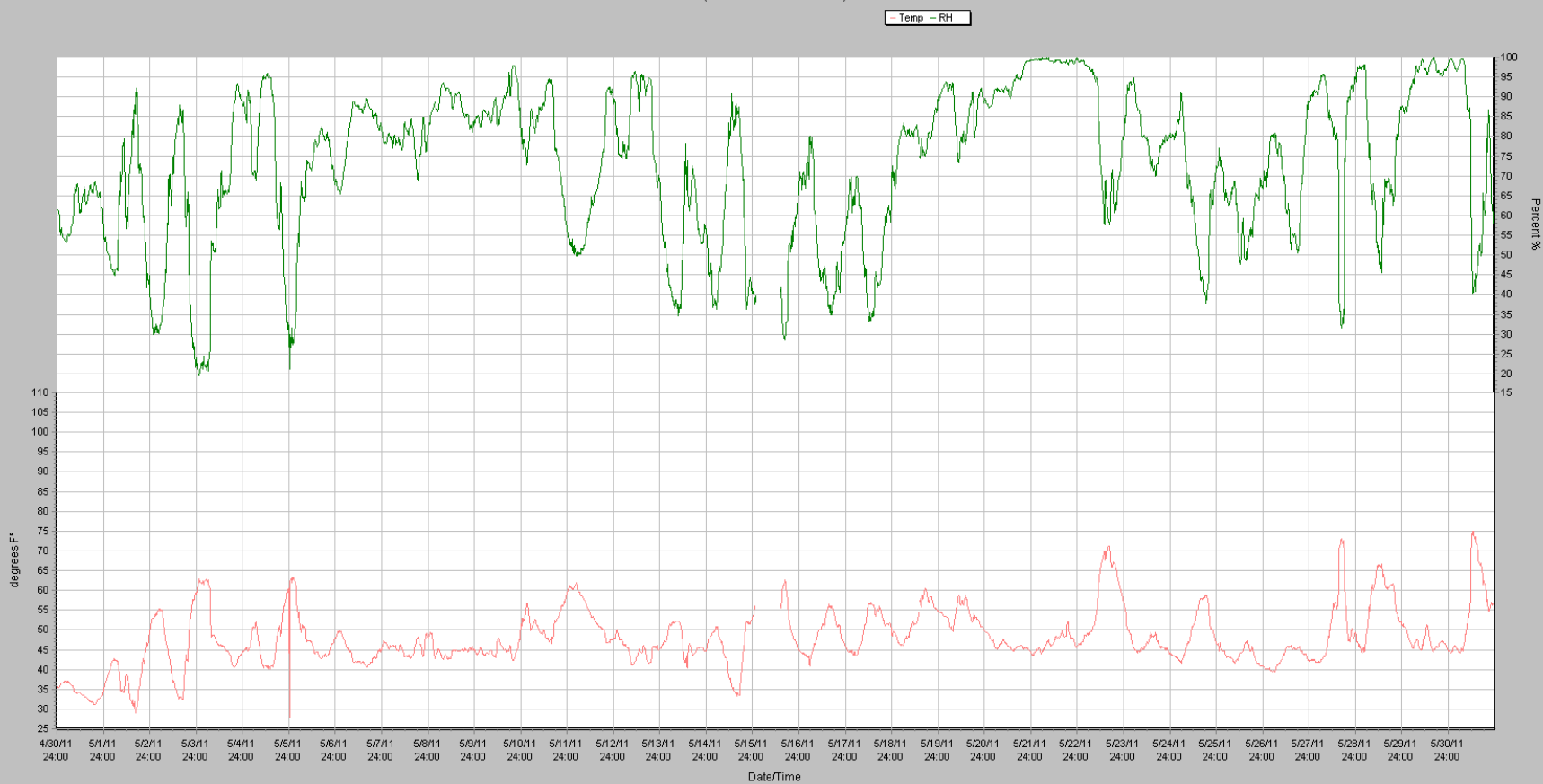
USS Spirit Lake Meteorological Station



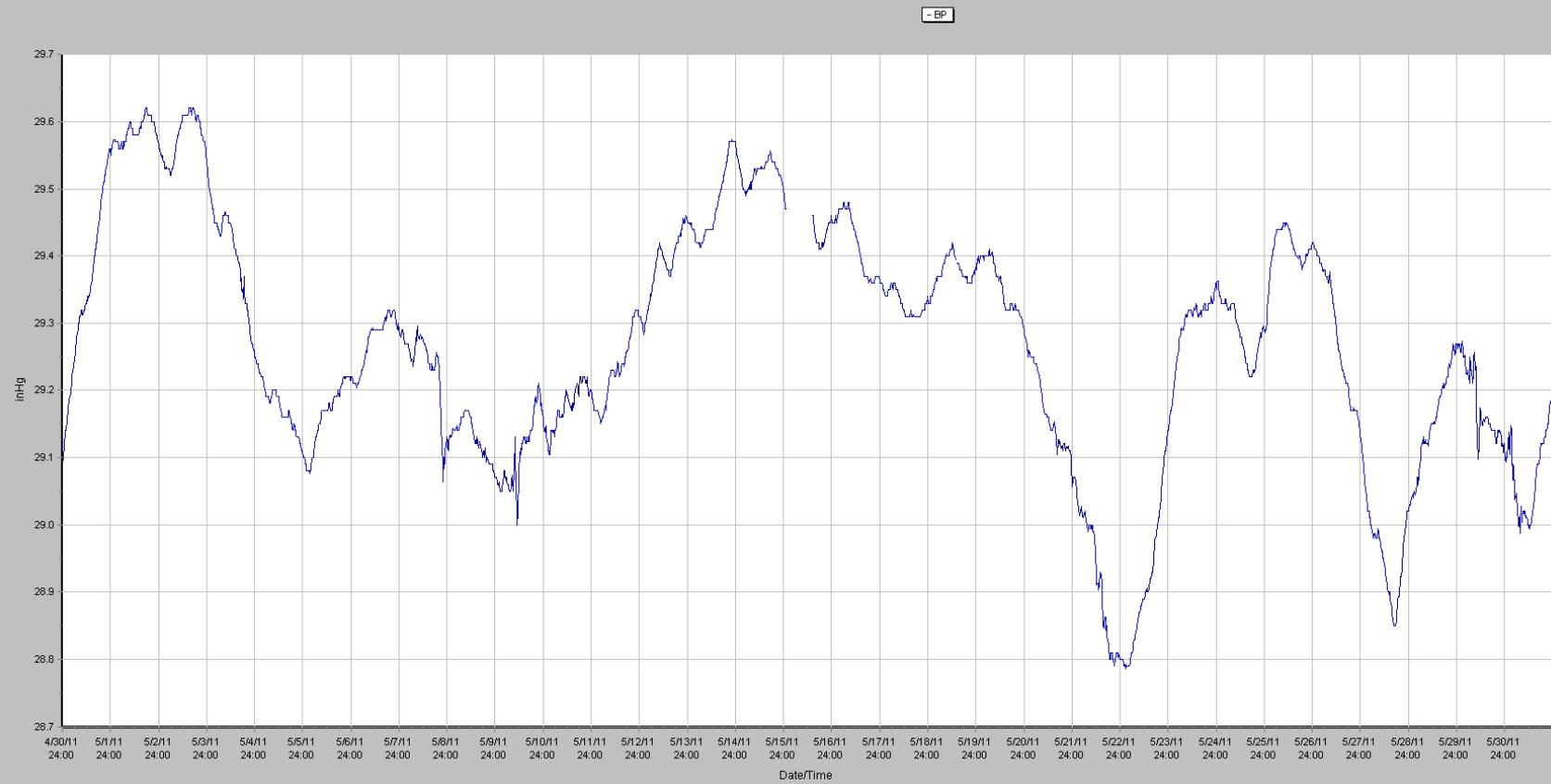
Wind Speed / Wind Direction
(15 Minute Data Interval)



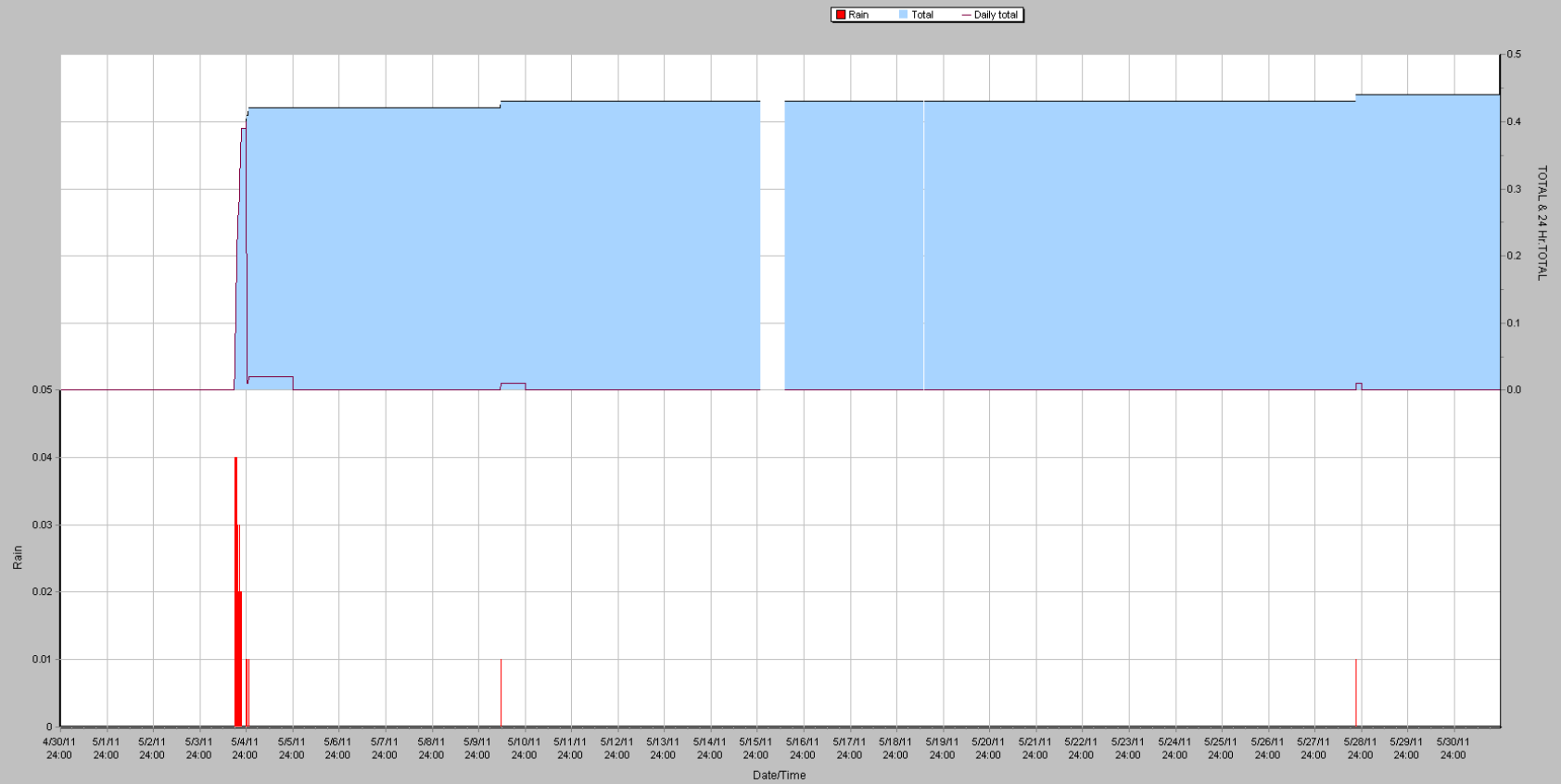
Temperature / Relative Humidity
(15 Minute Data Interval)



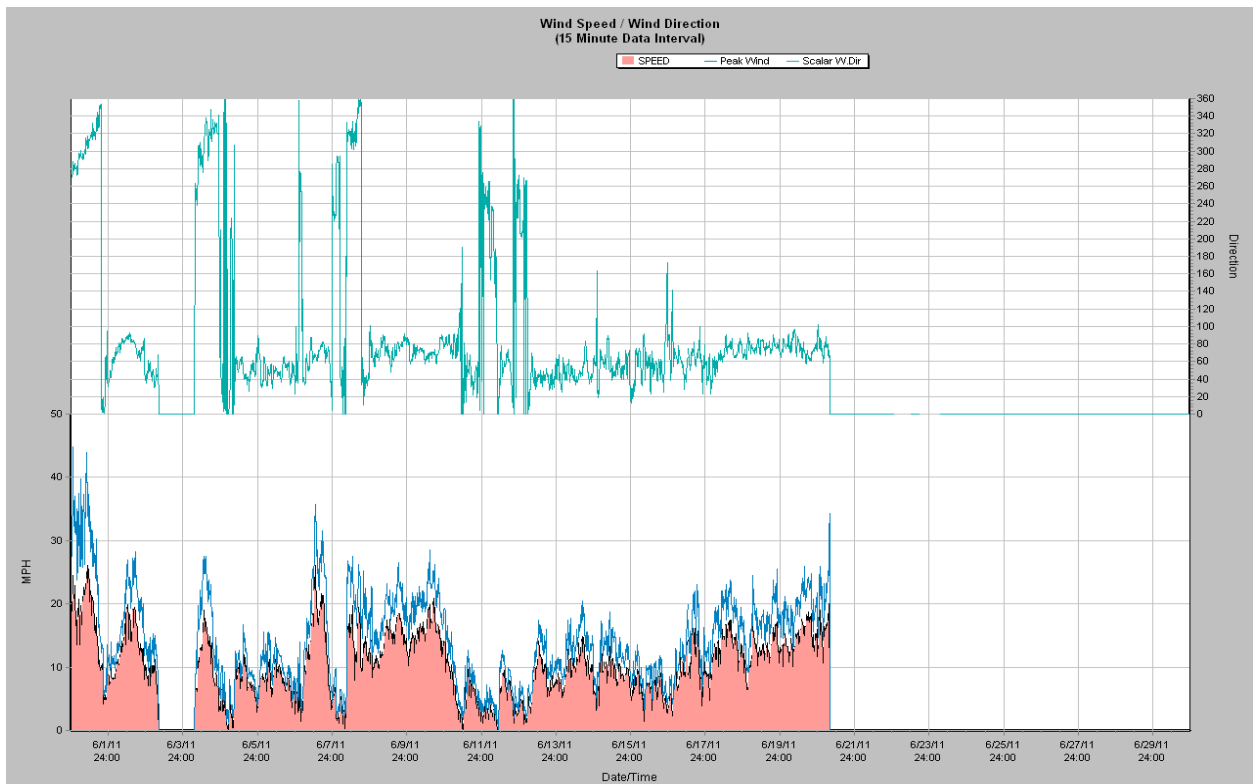
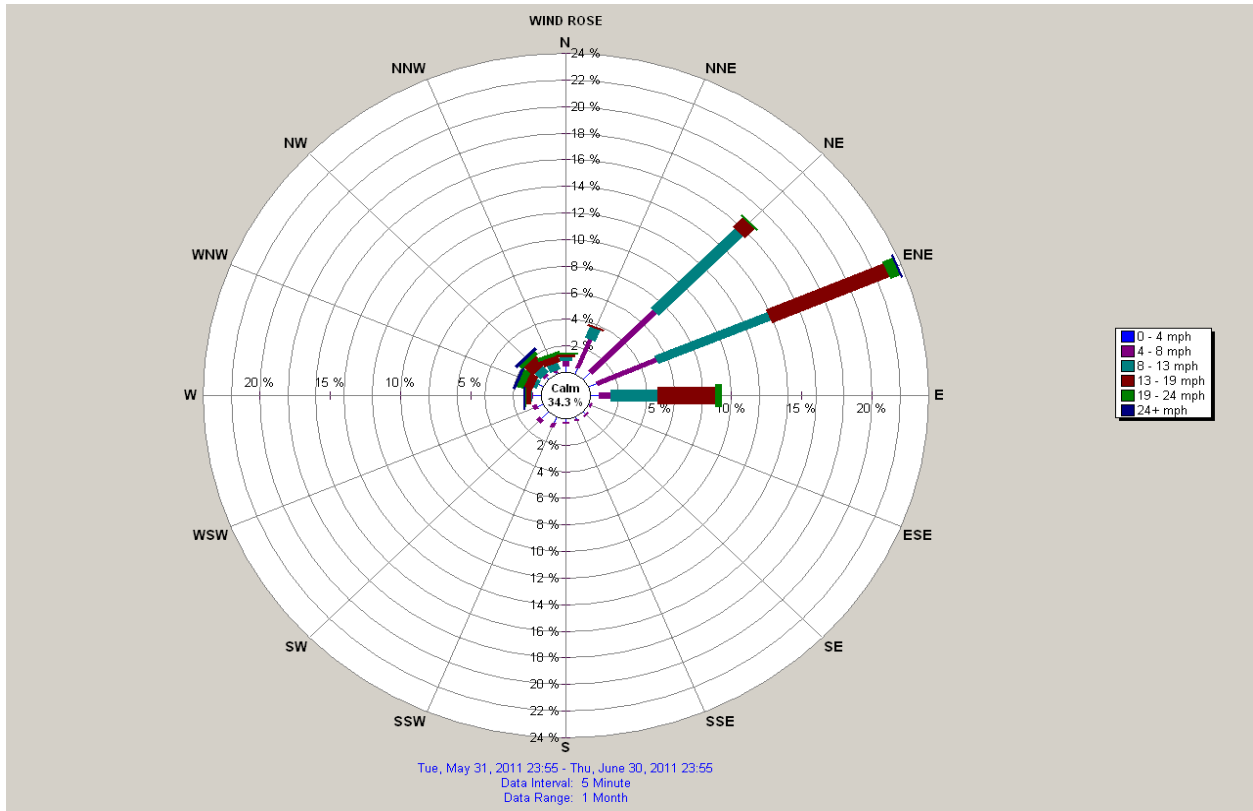
Barometric Pressure
(15 Minute Data Interval)

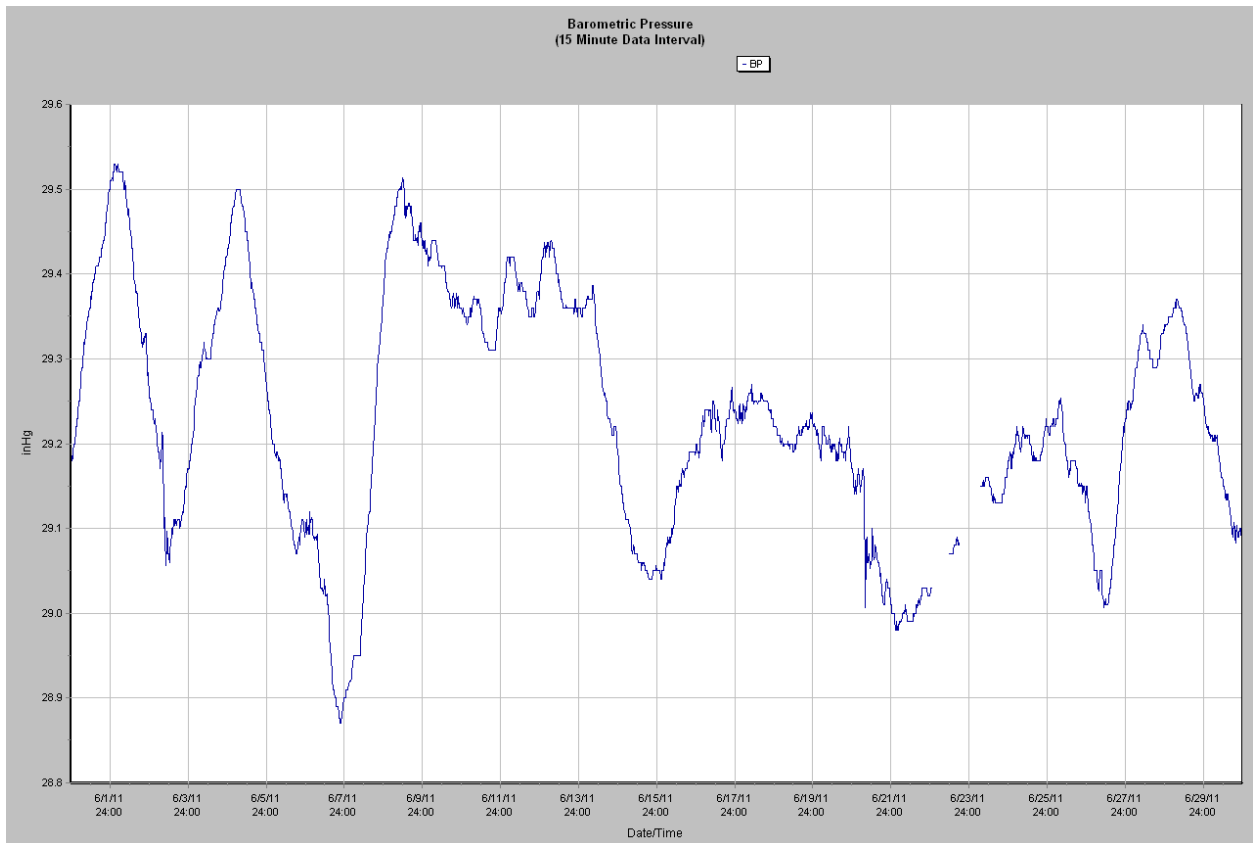
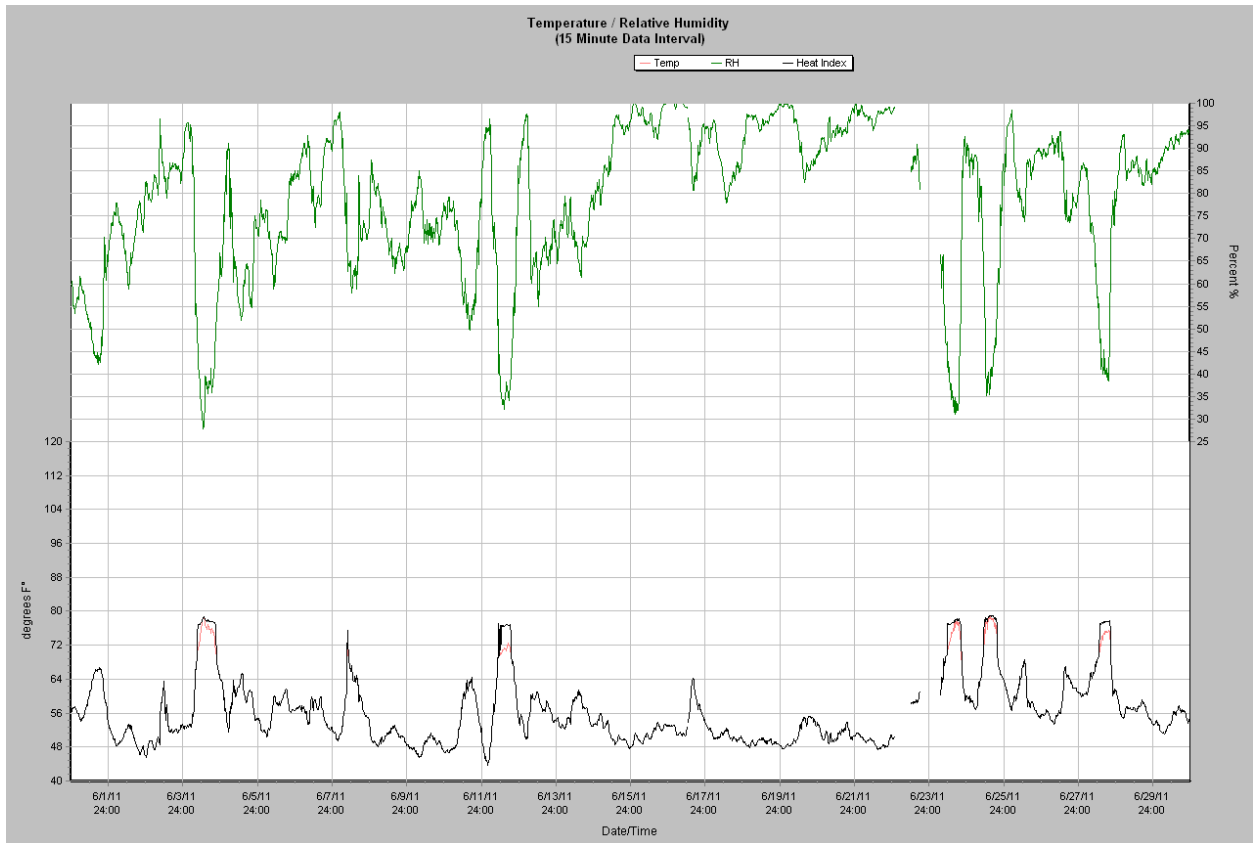


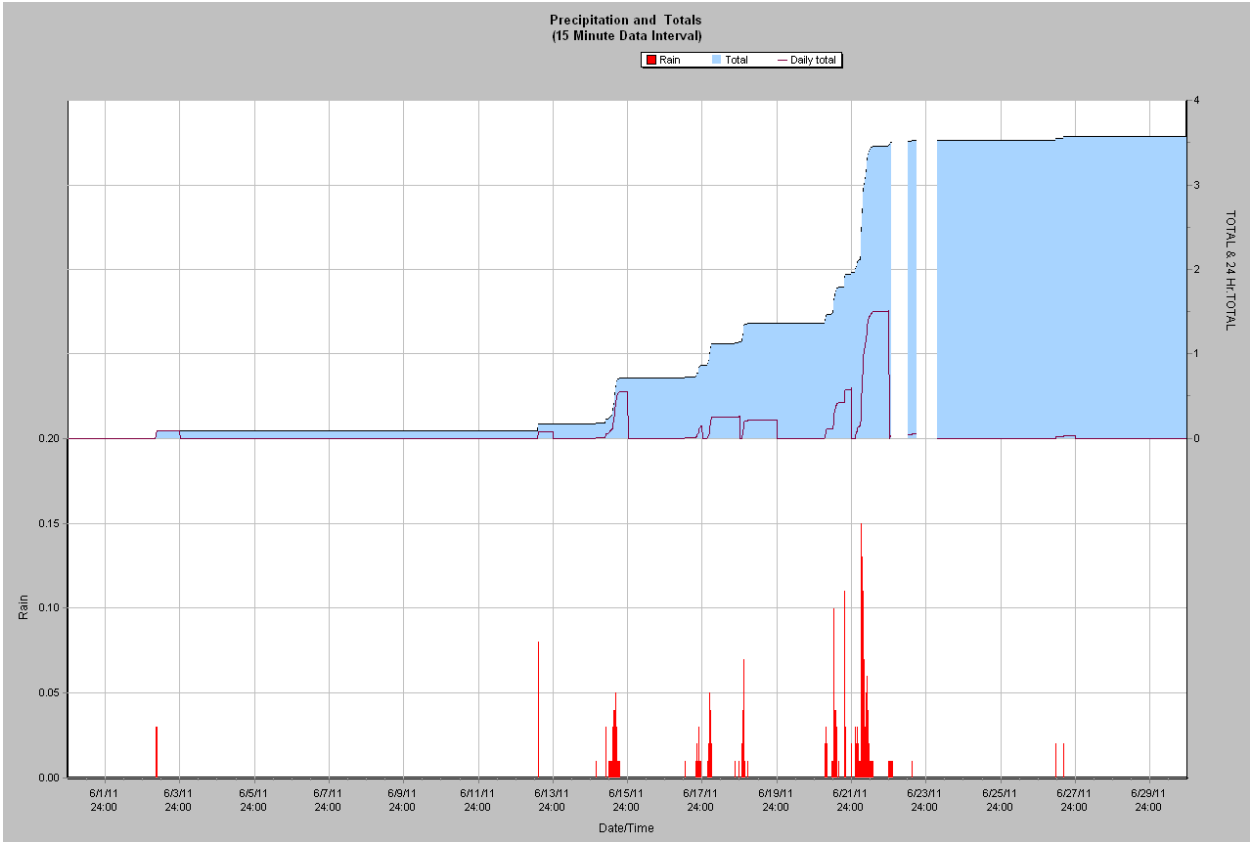
Precipitation and Totals
(15 Minute Data Interval)



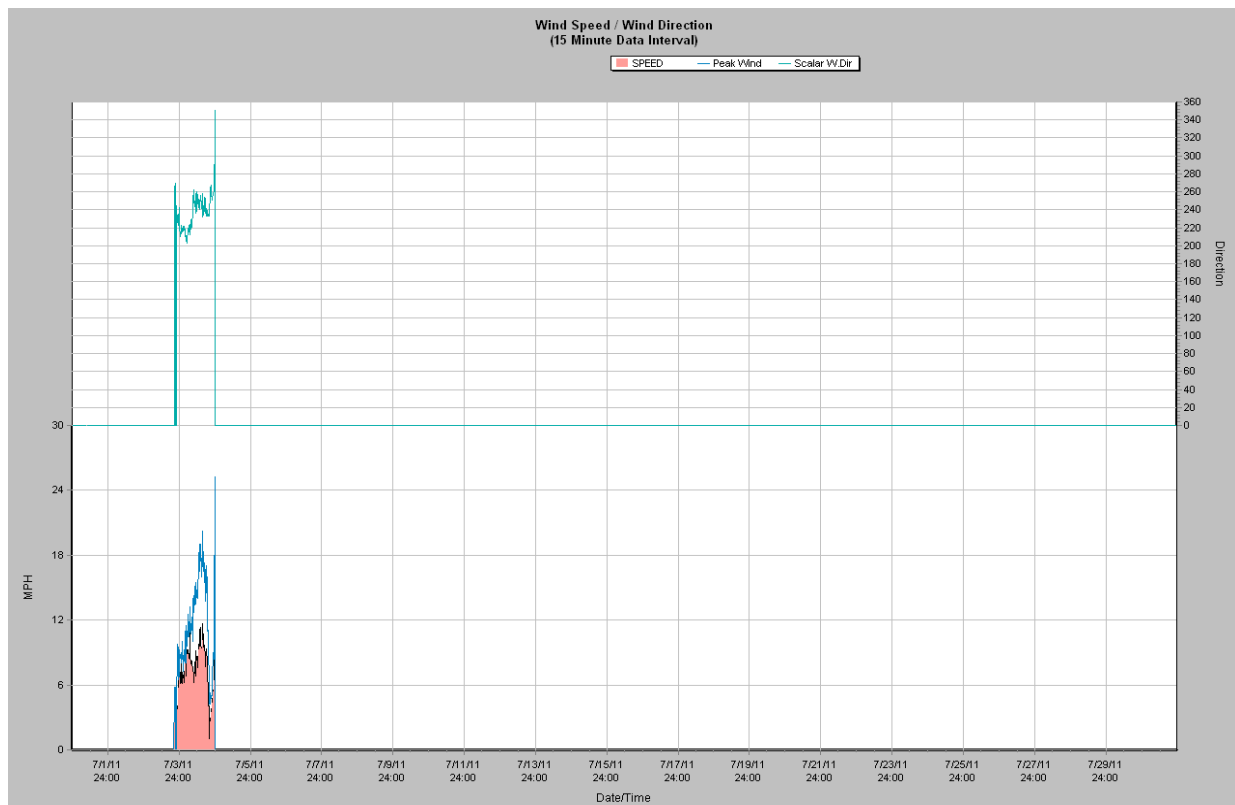
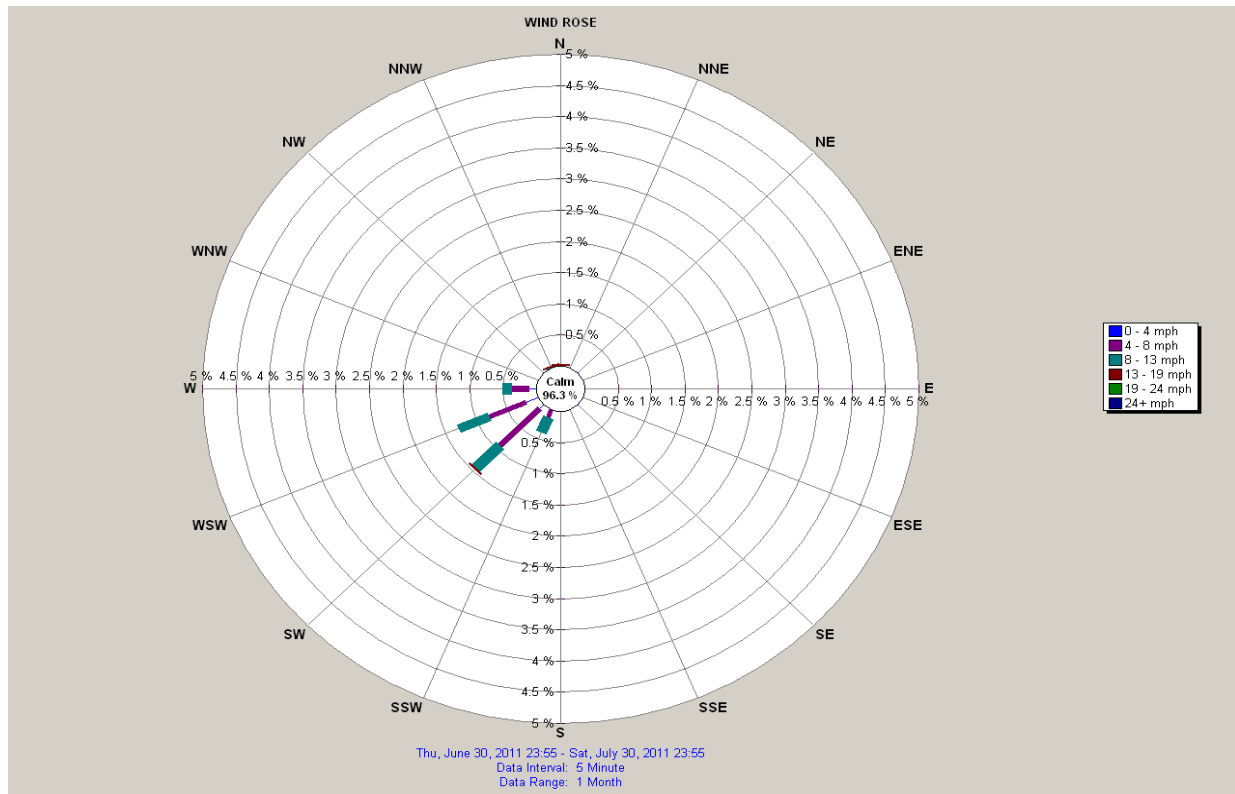
June 2011 Weather Graphs

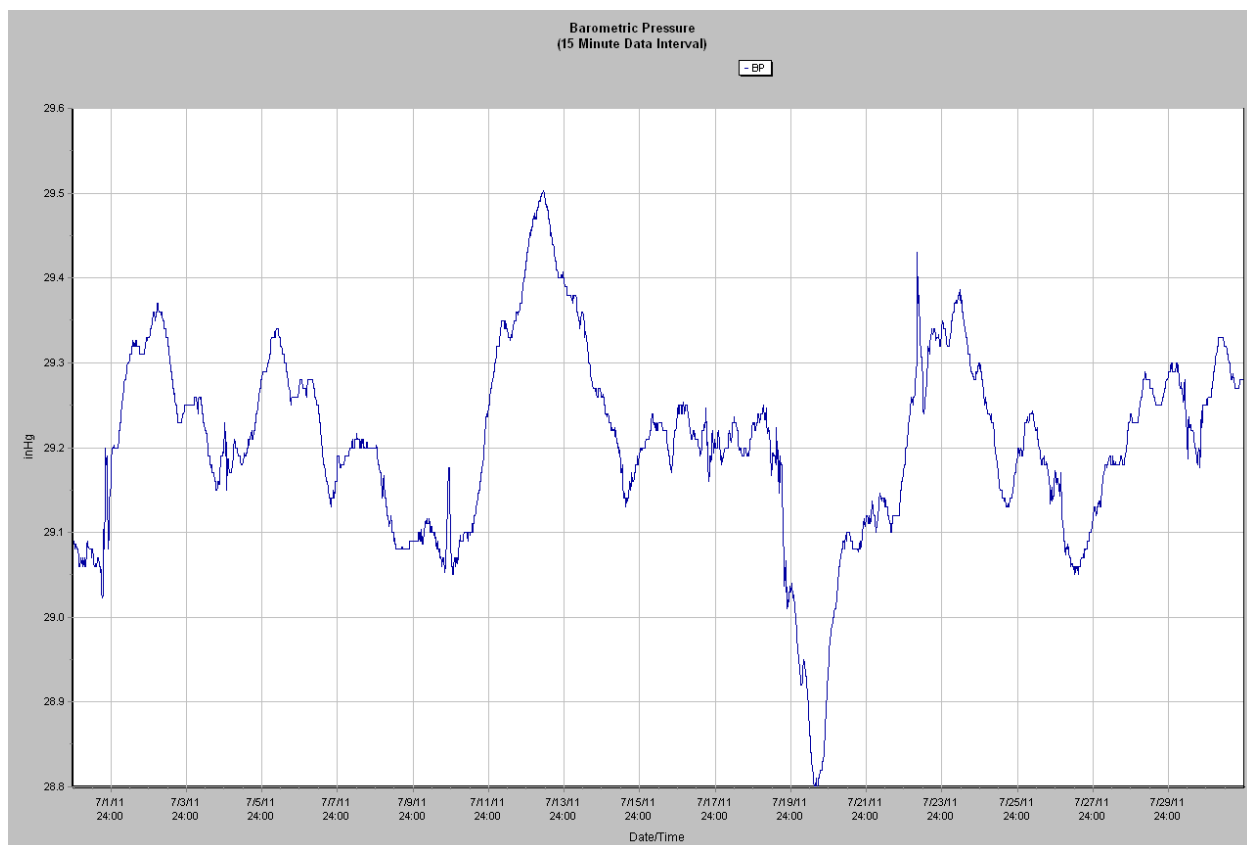
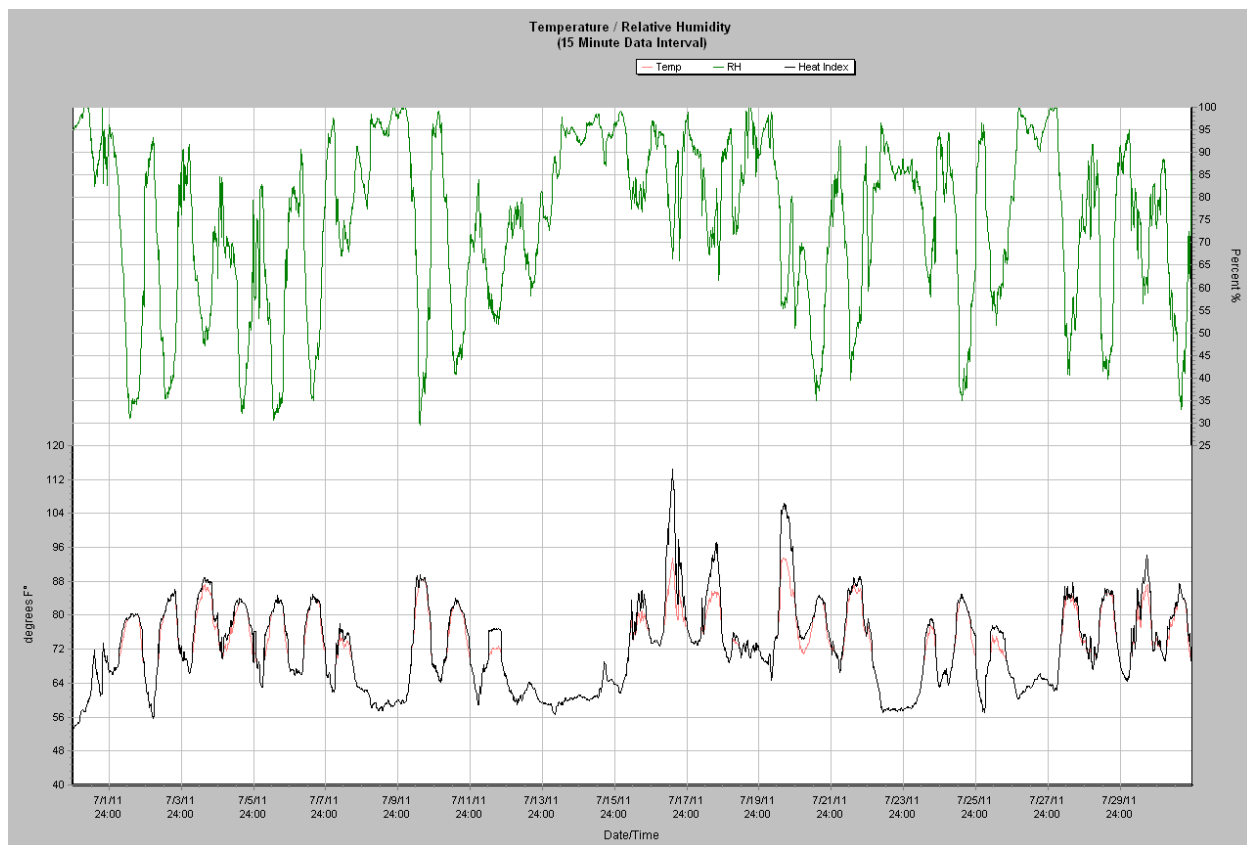


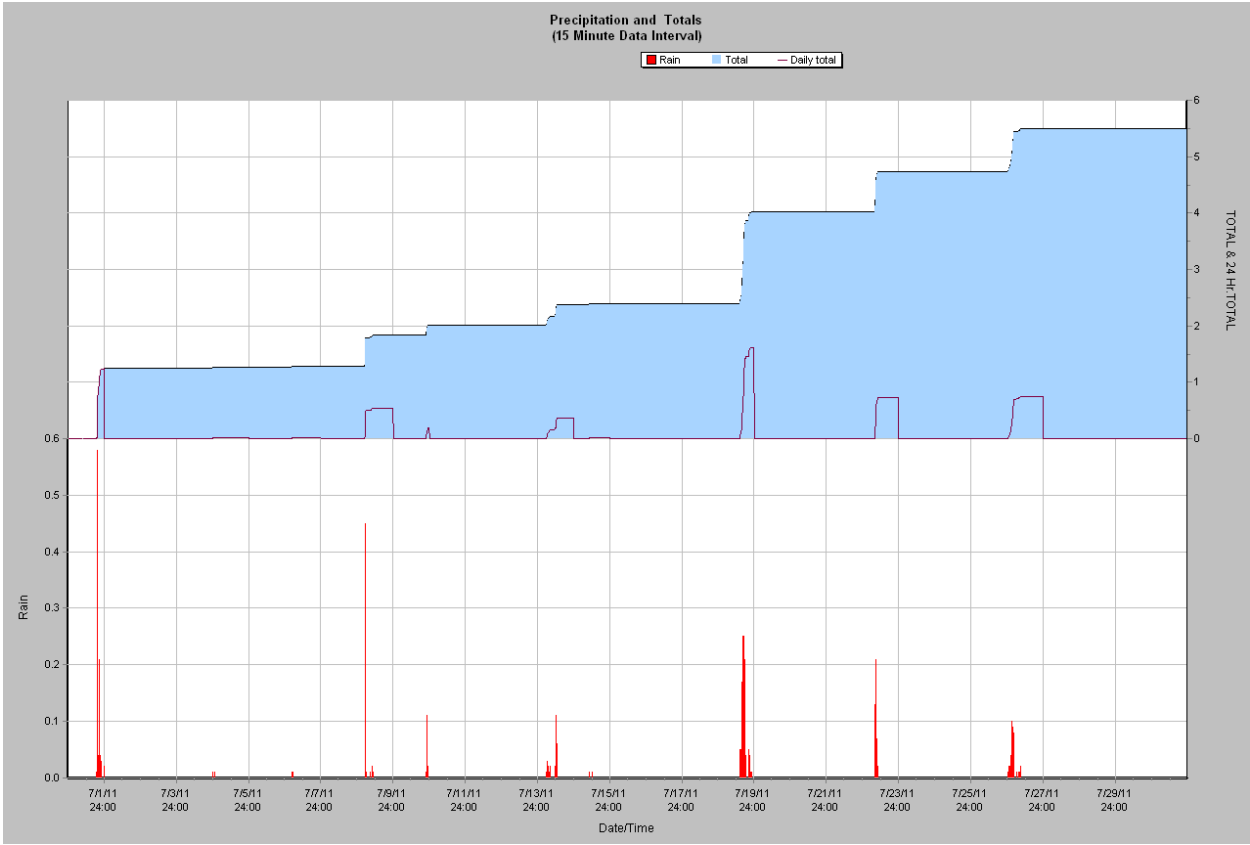




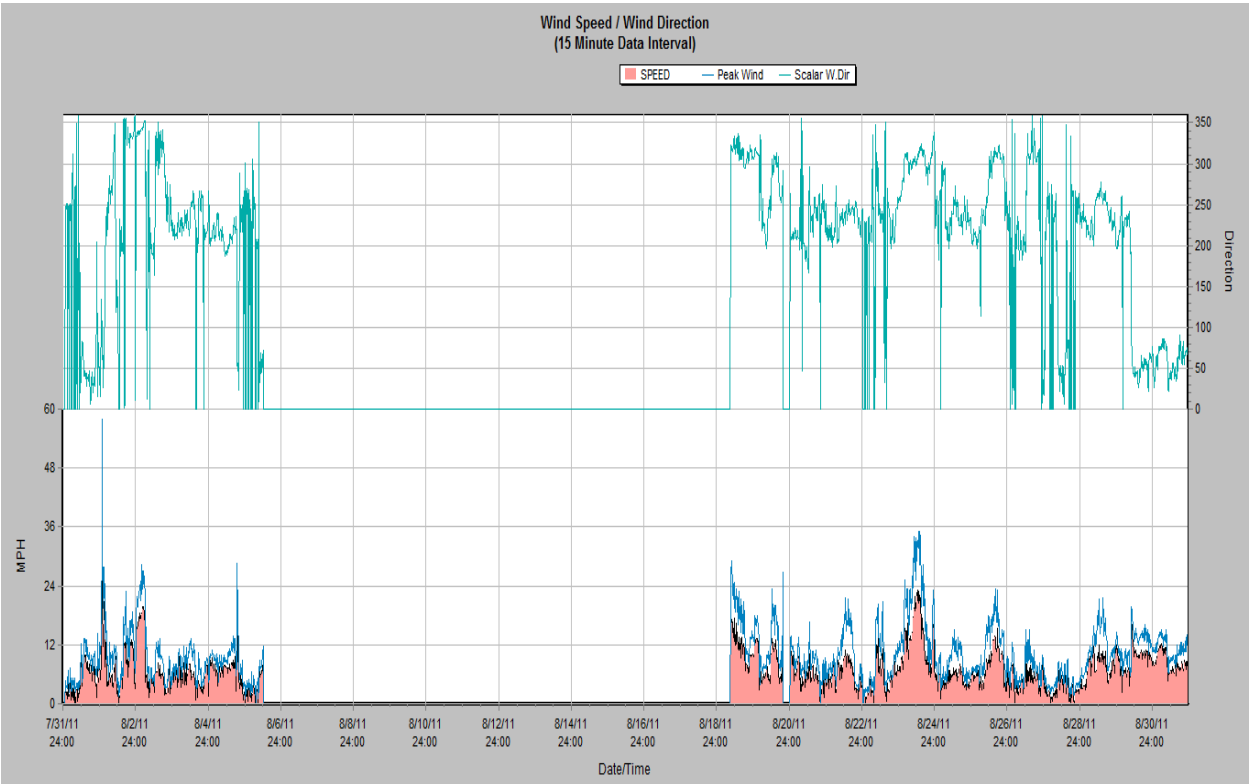
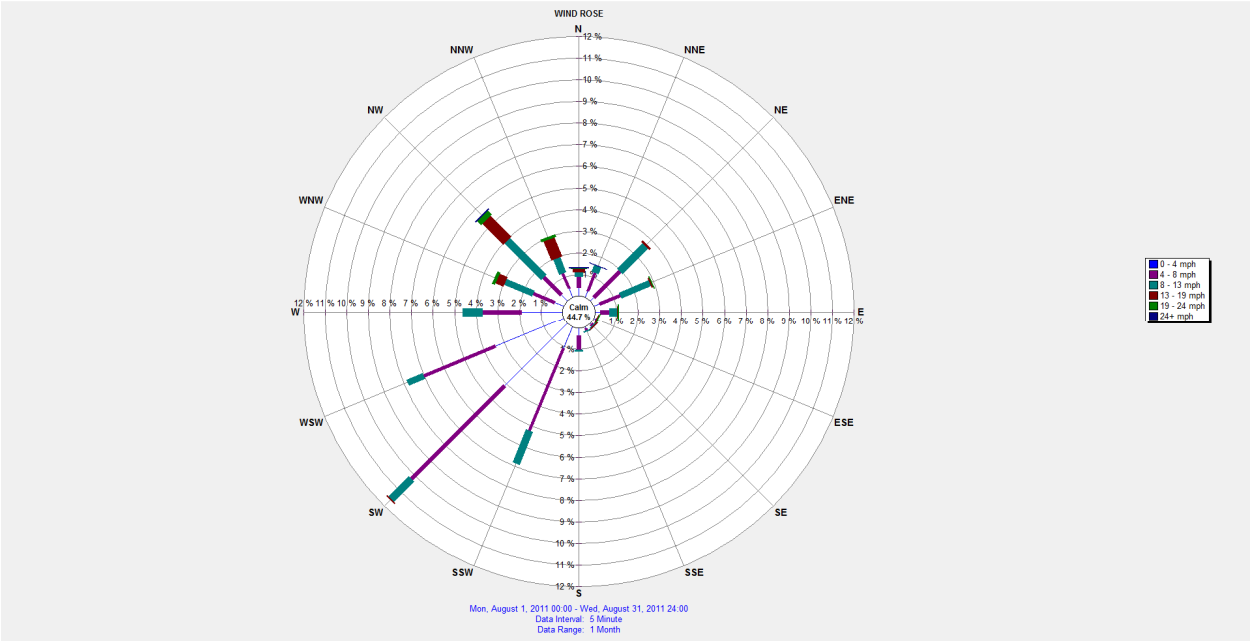
July 2011 Weather Graphs

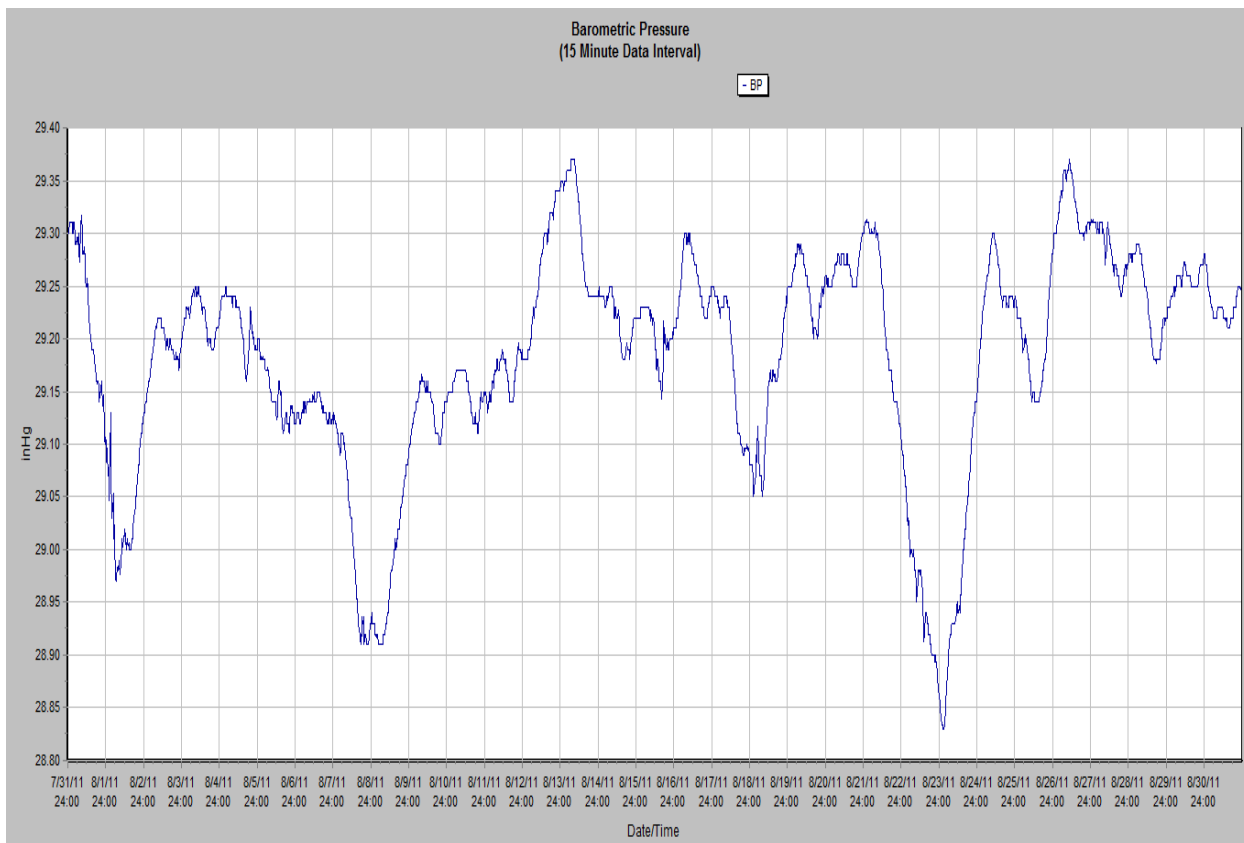
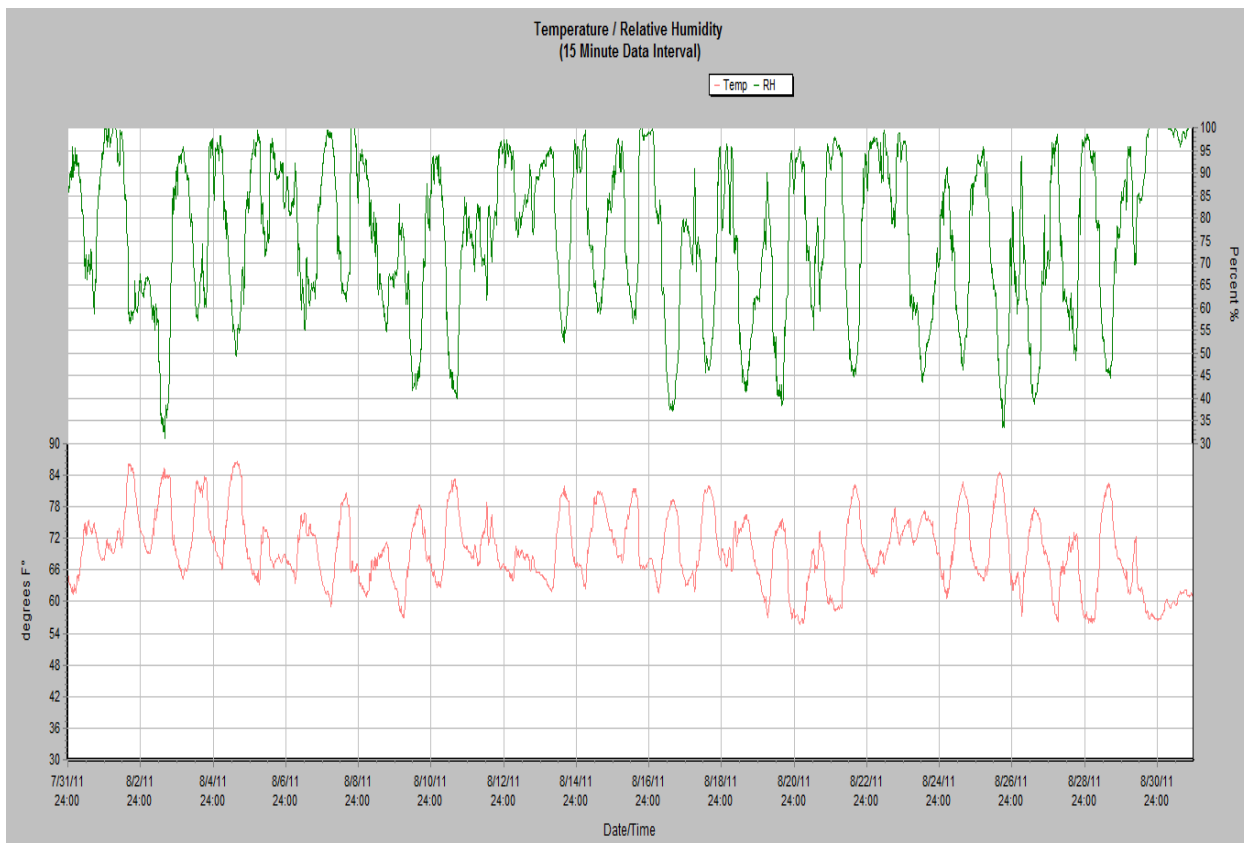






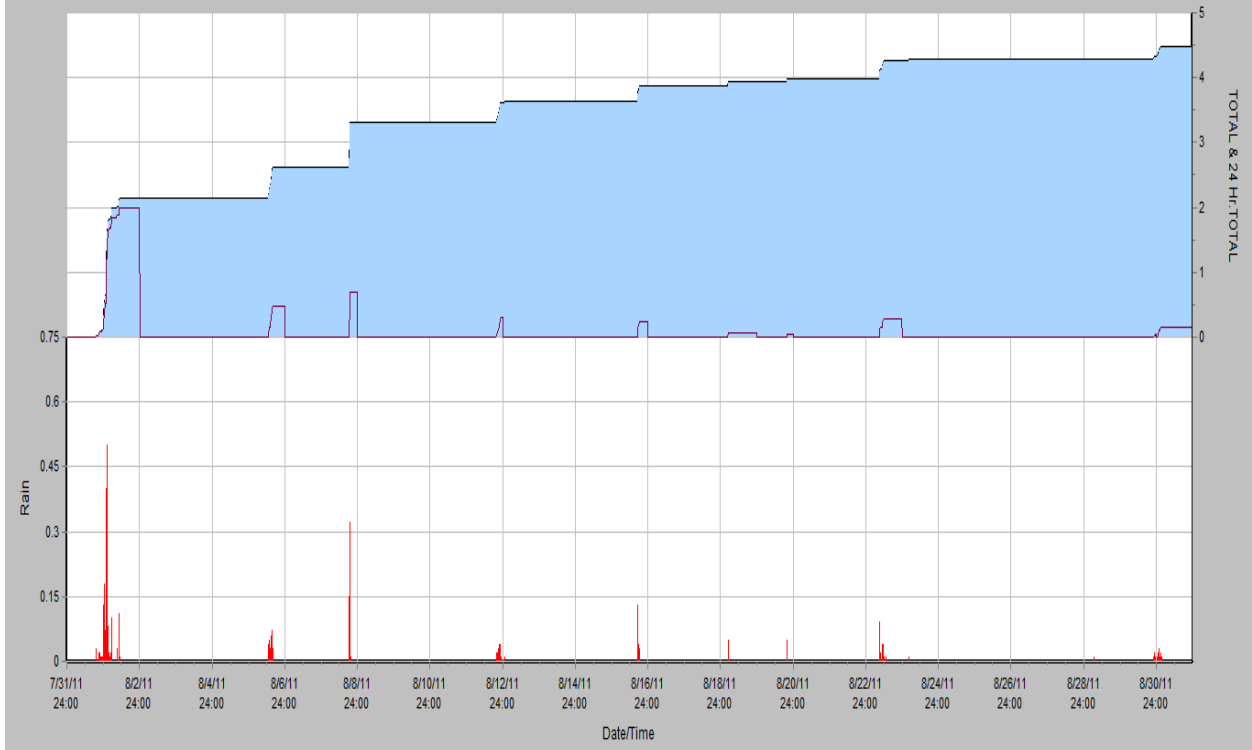
August 2011 Weather Graphs



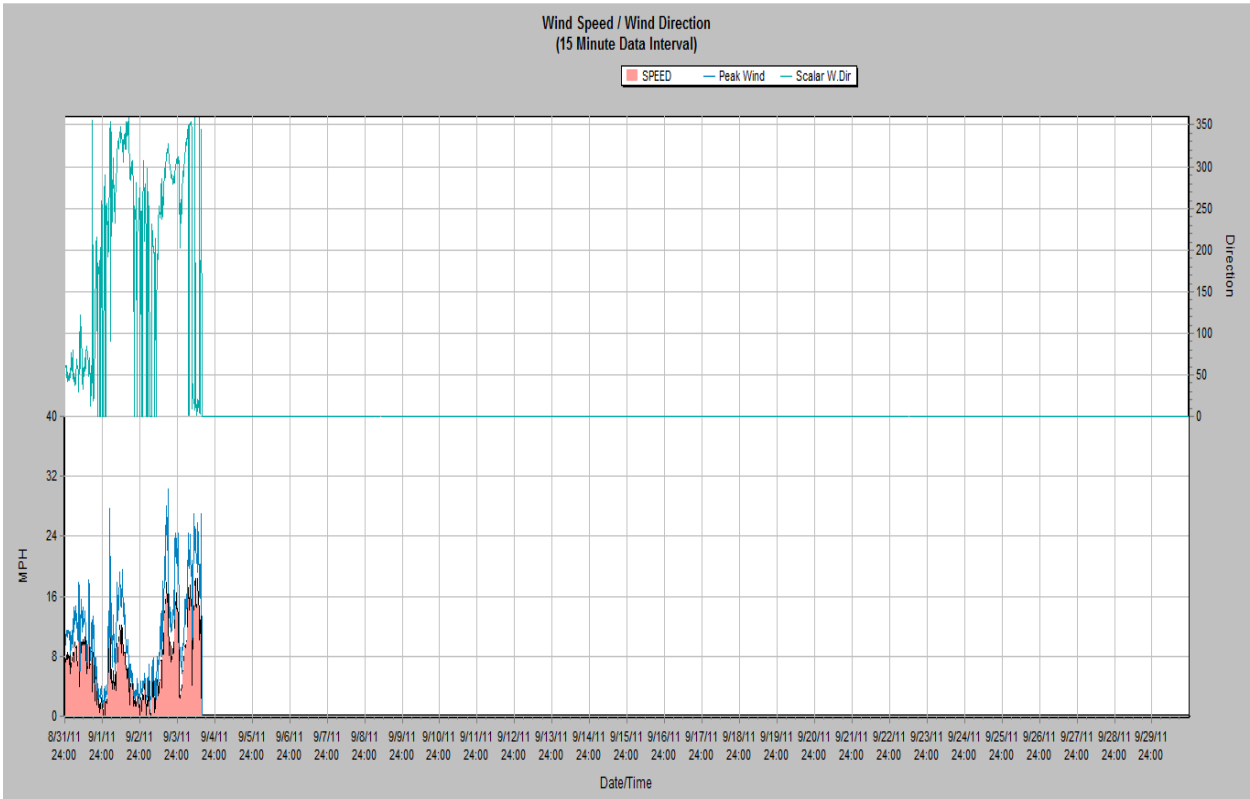
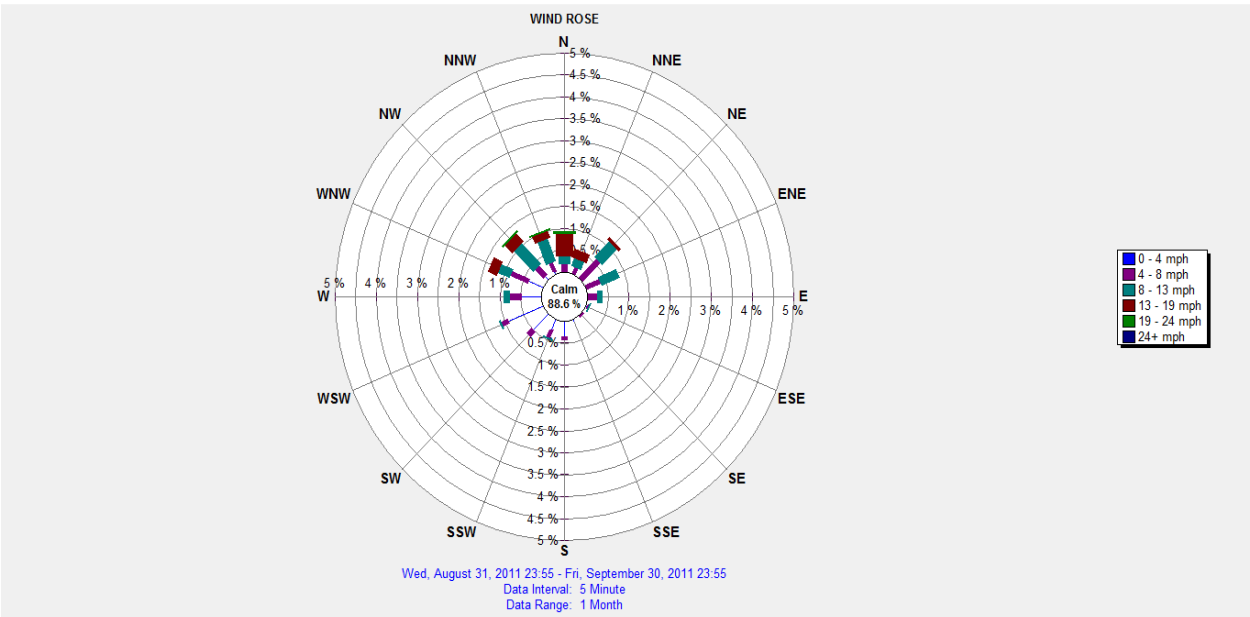


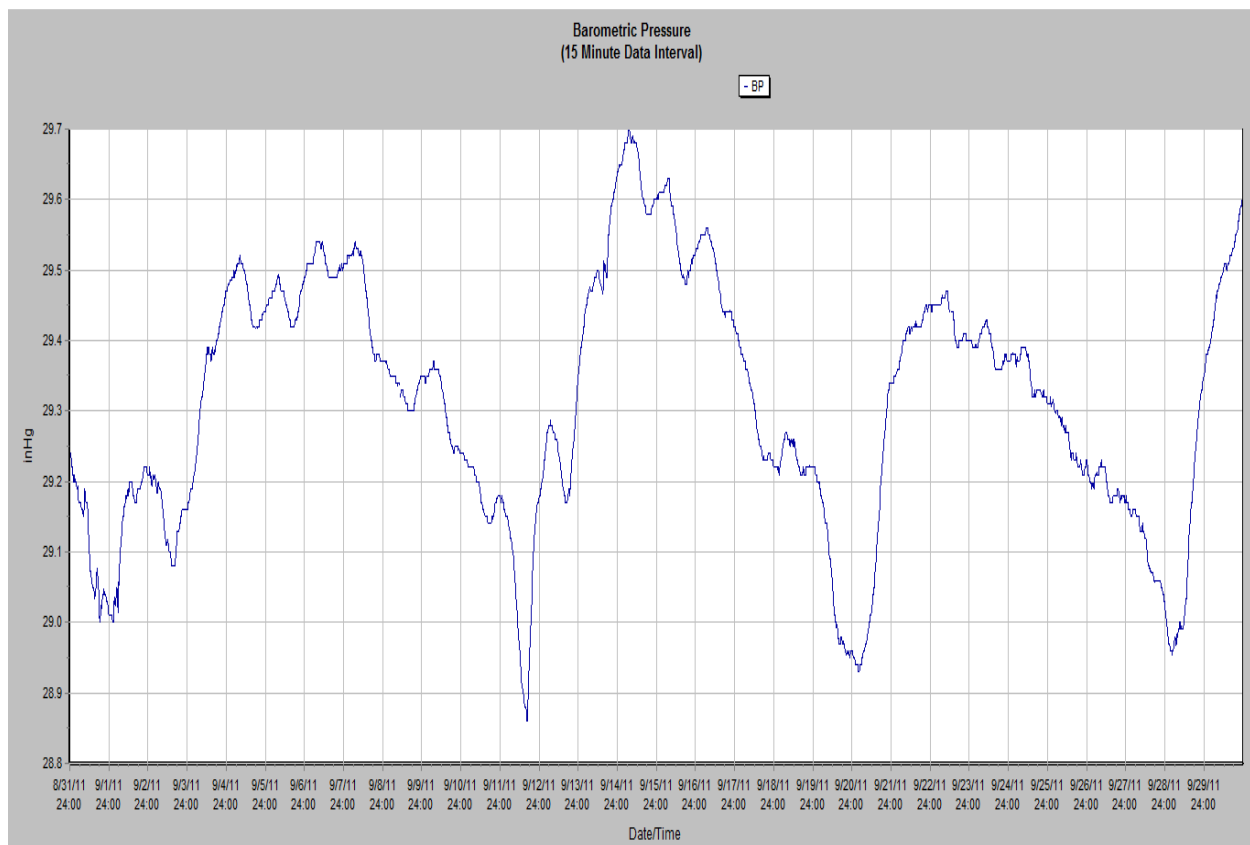
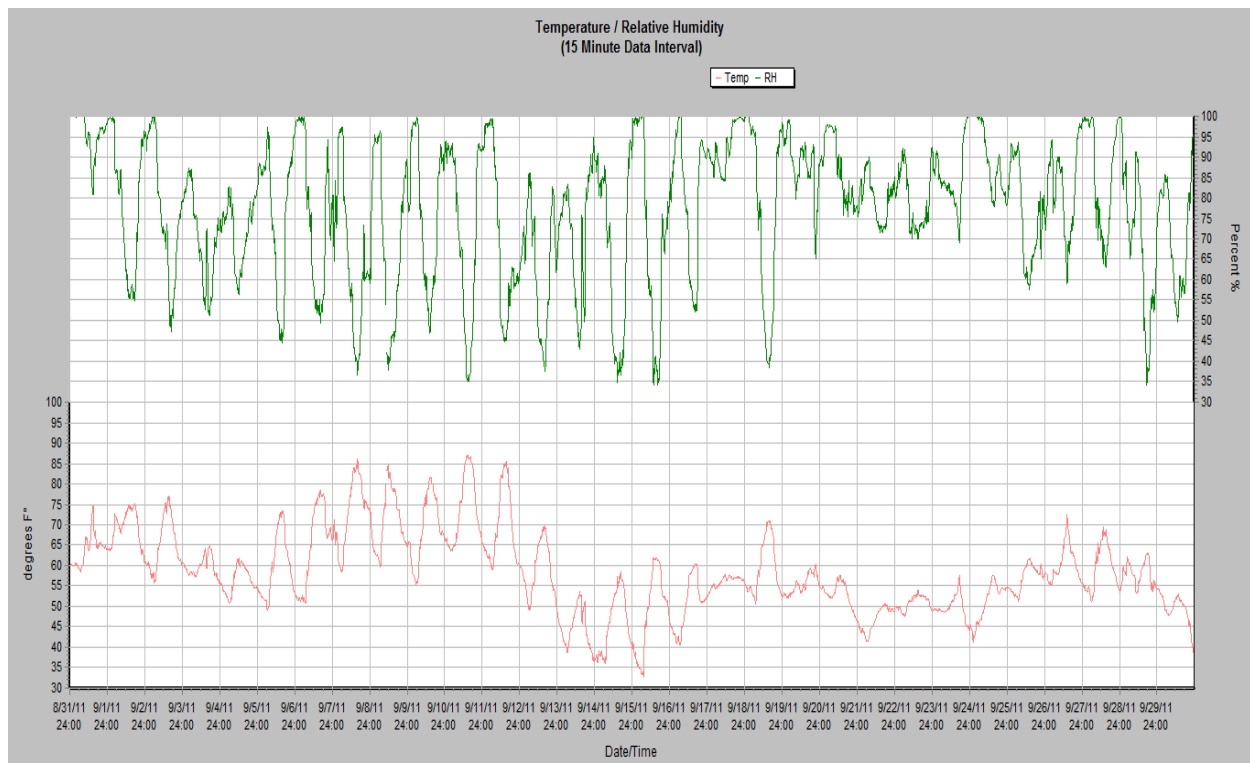
Precipitation and Totals
(15 Minute Data Interval)

Rain Total Daily total

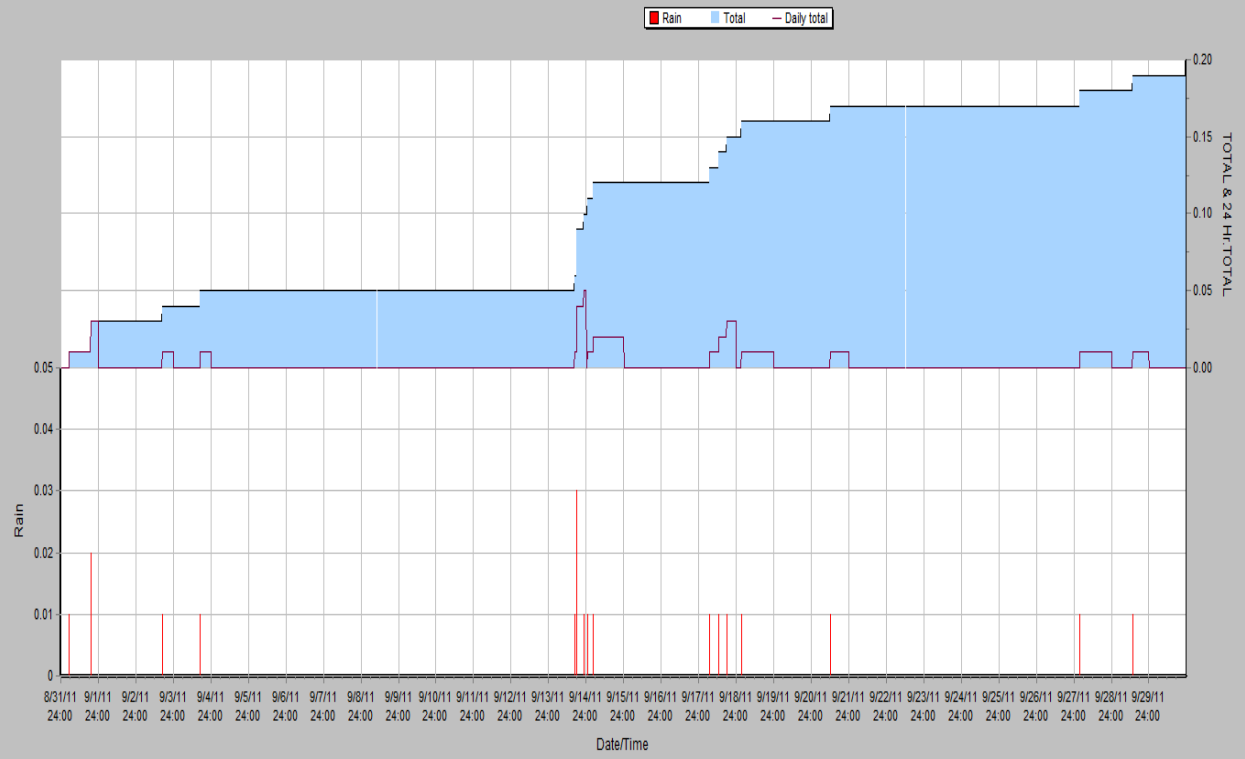


September 2011 Weather Graphs

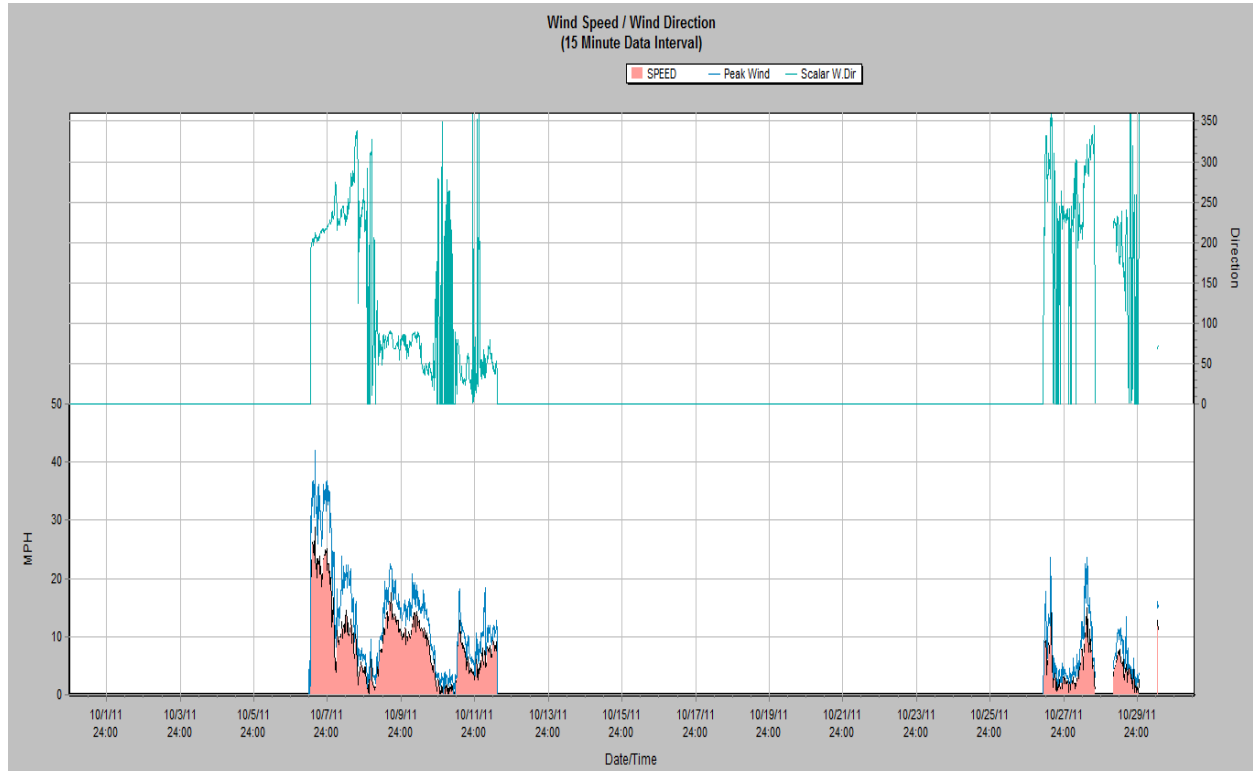
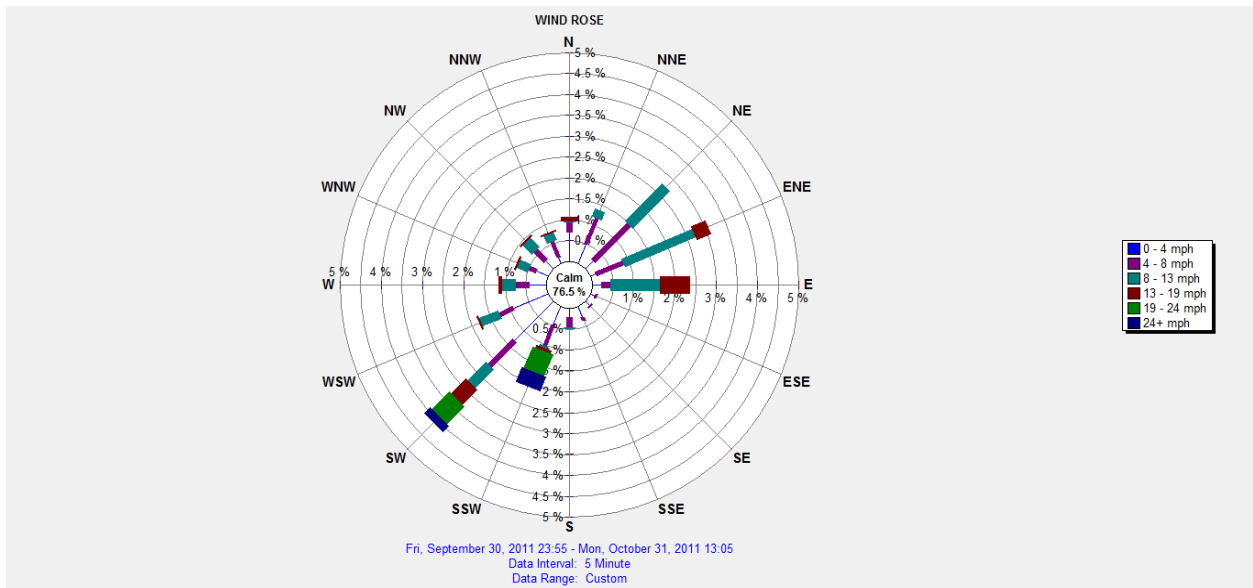


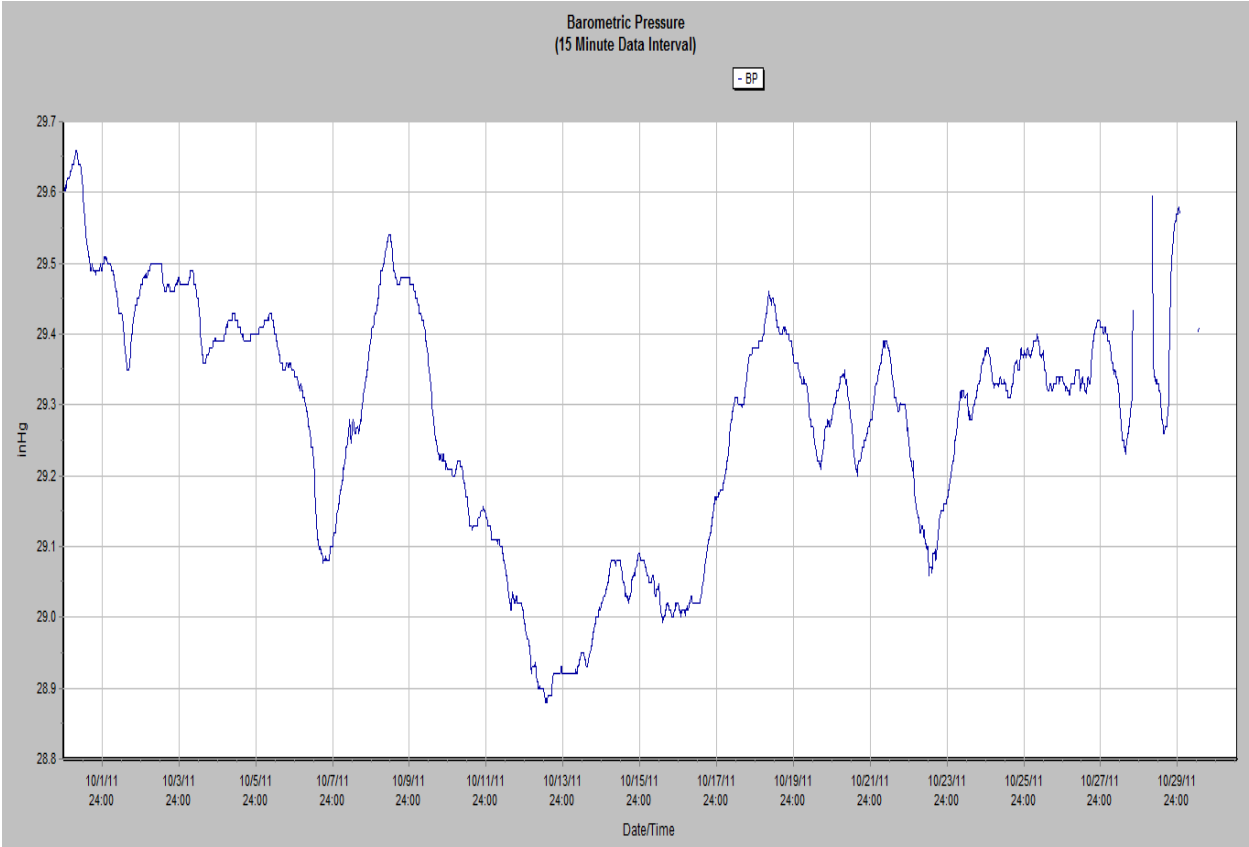
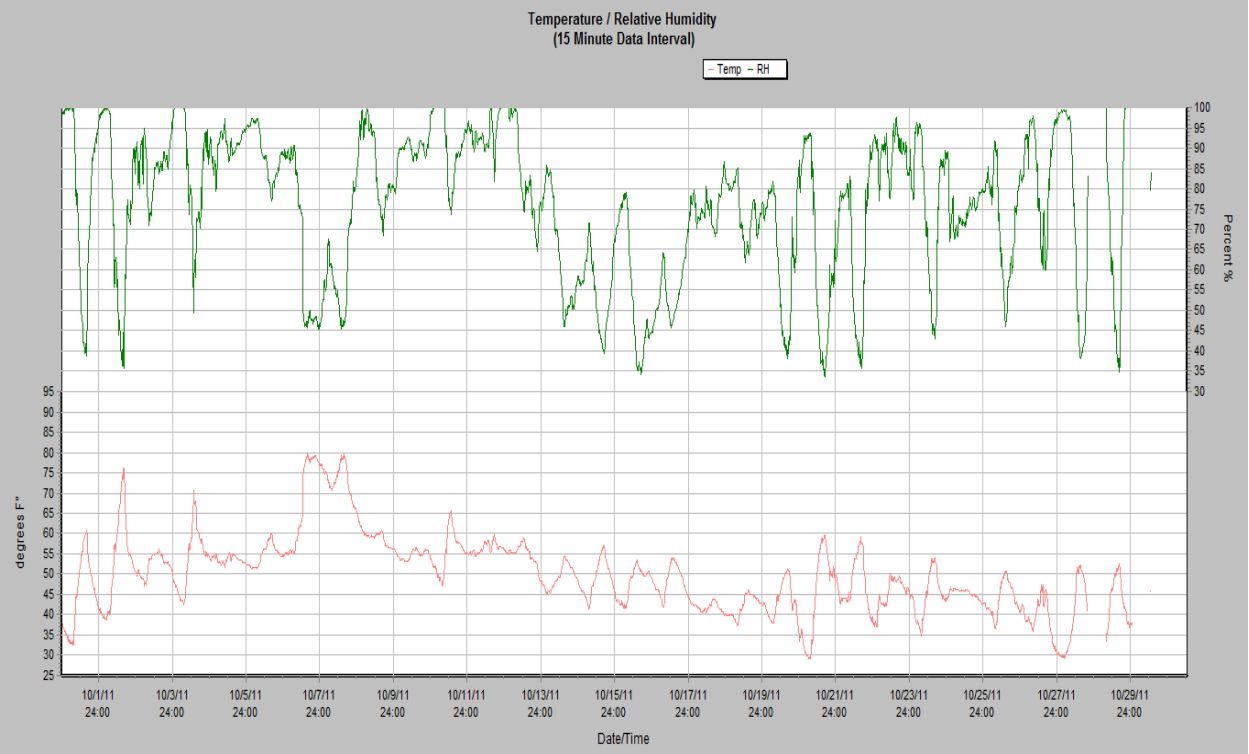


Precipitation and Totals
(15 Minute Data Interval)

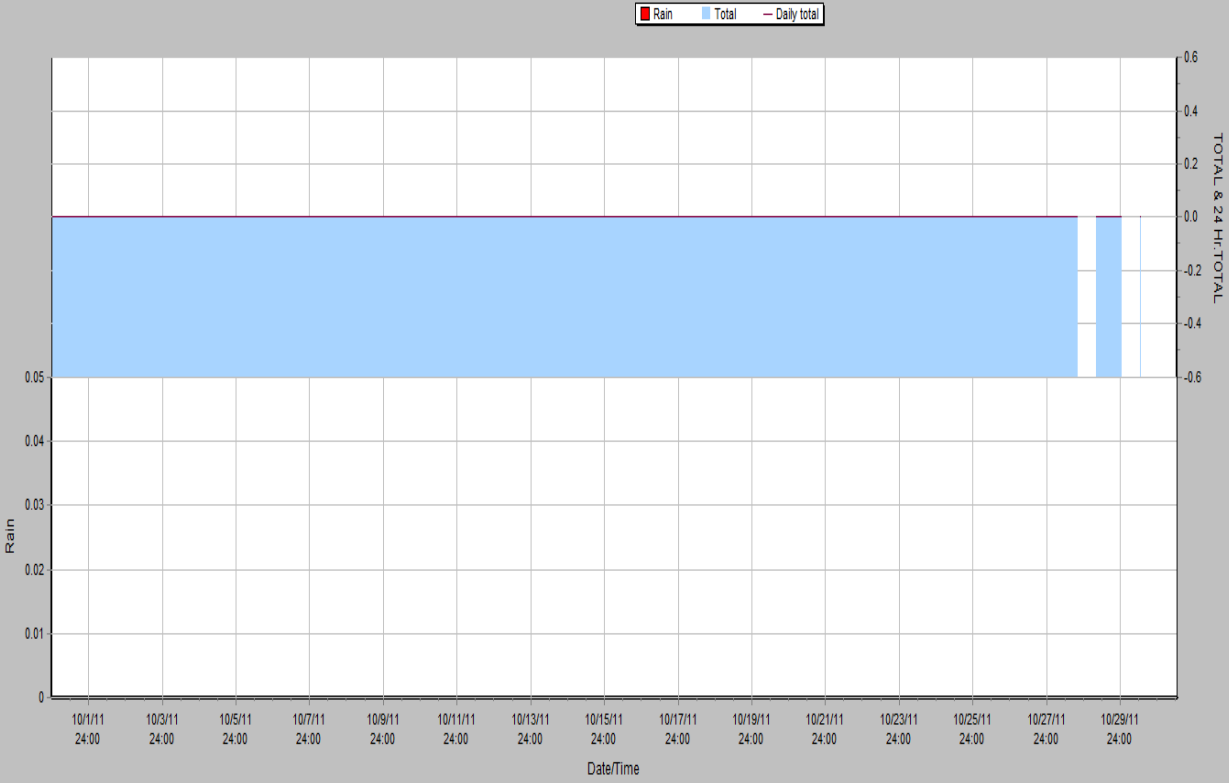


October 2011 Weather Graphs

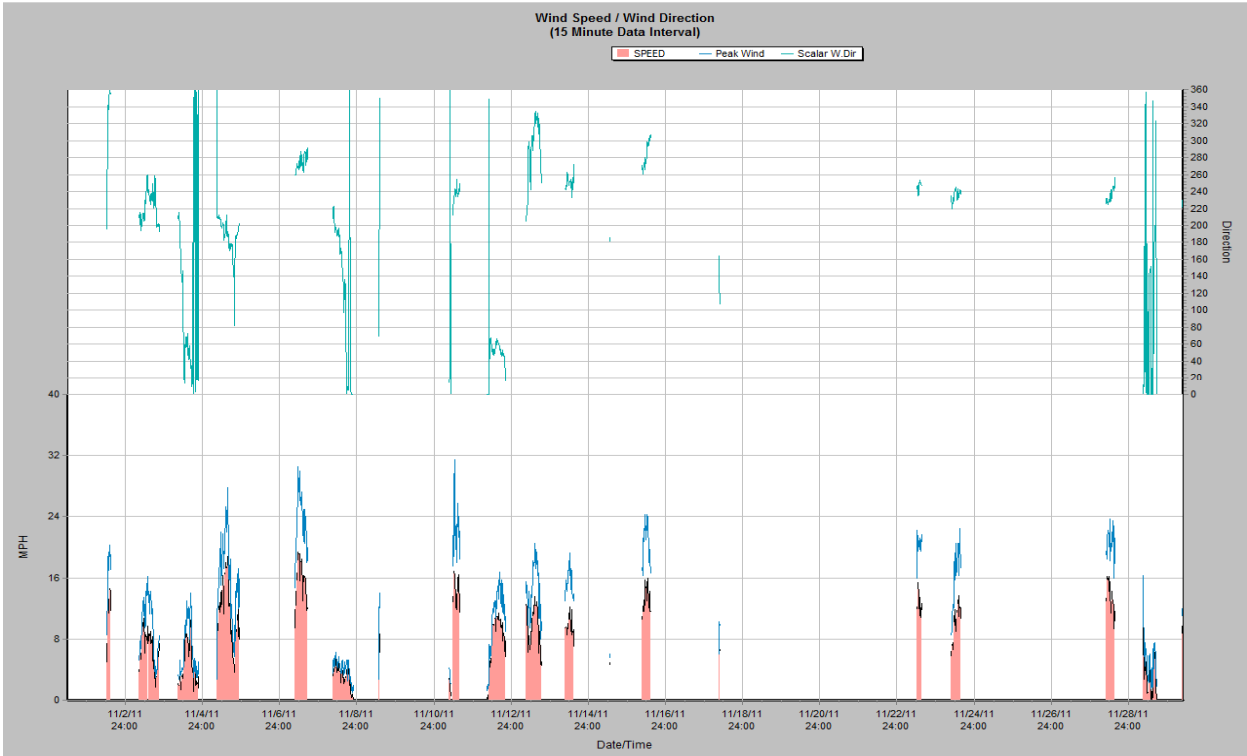
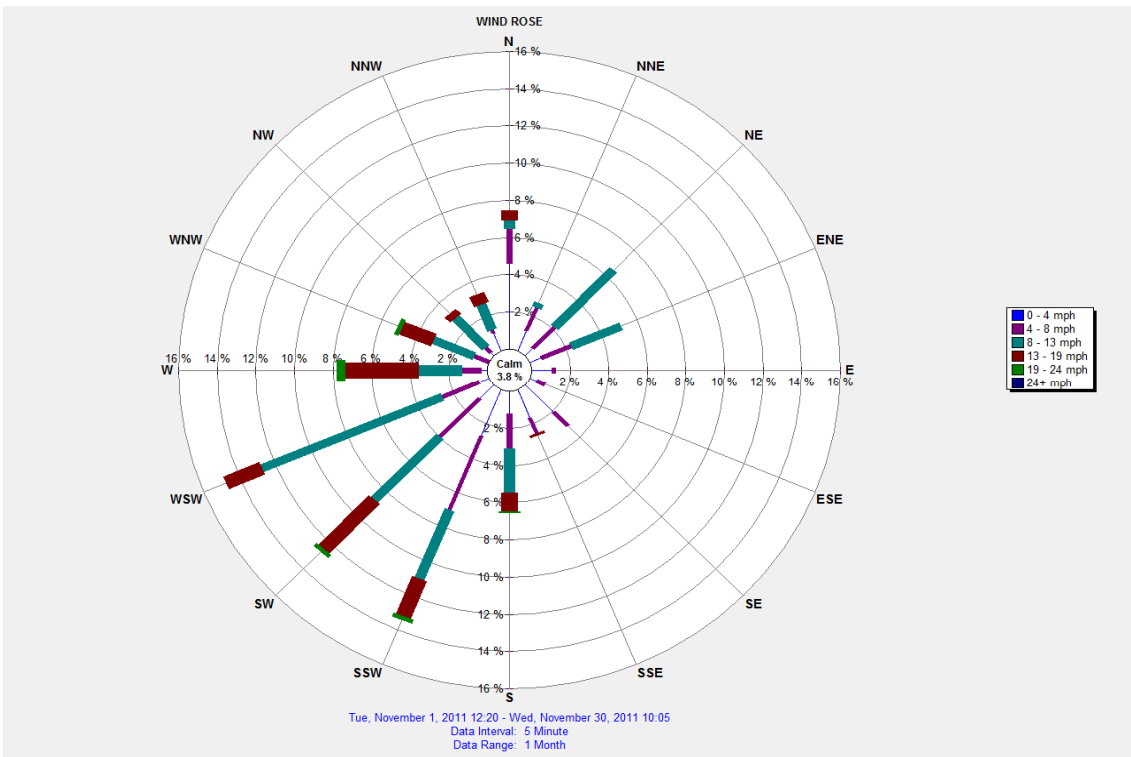


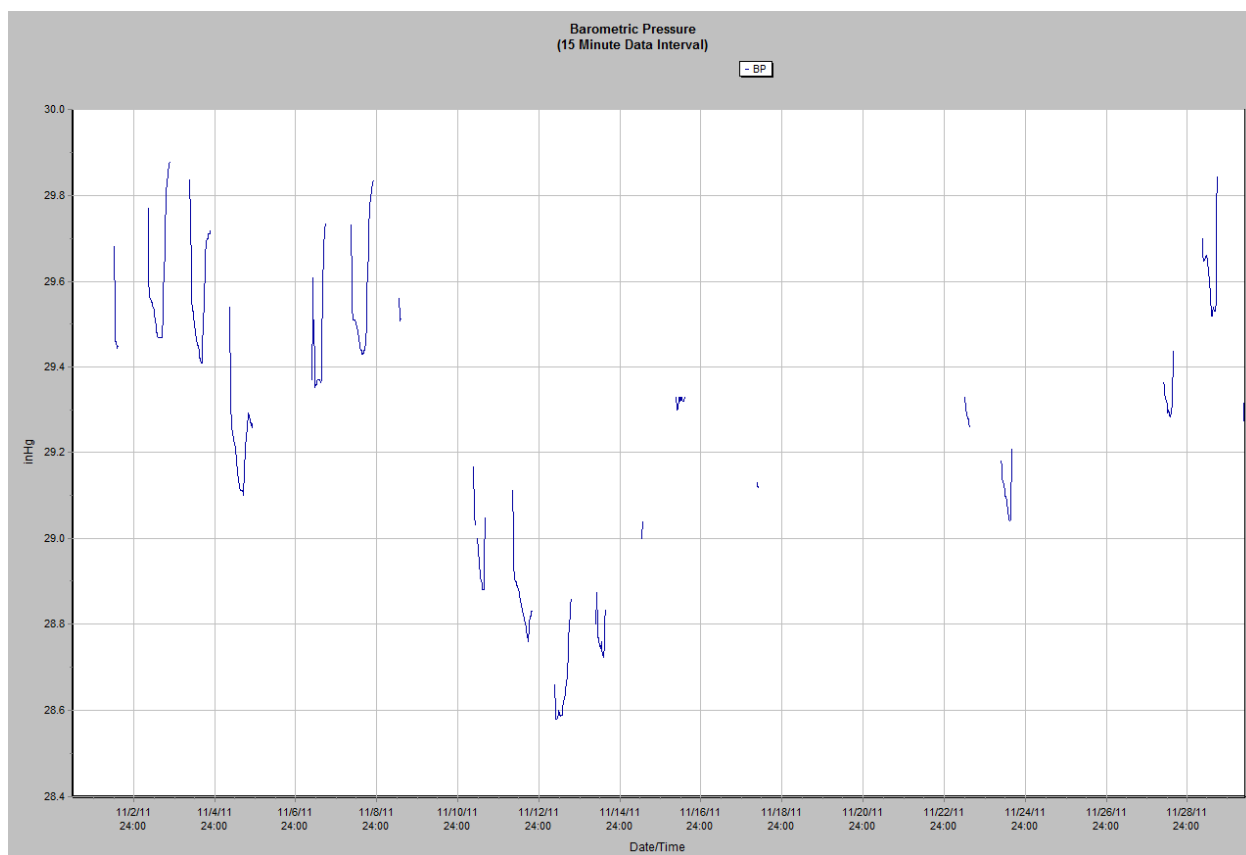
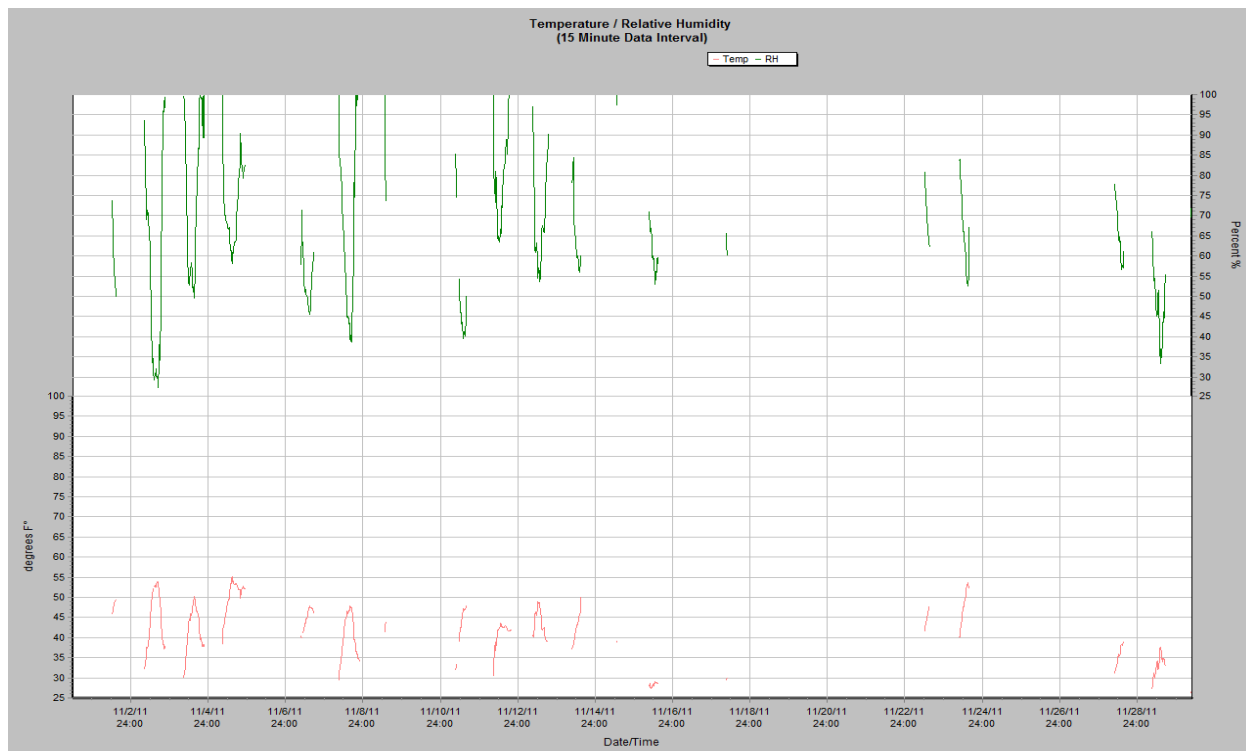


Precipitation and Totals
(15 Minute Data Interval)



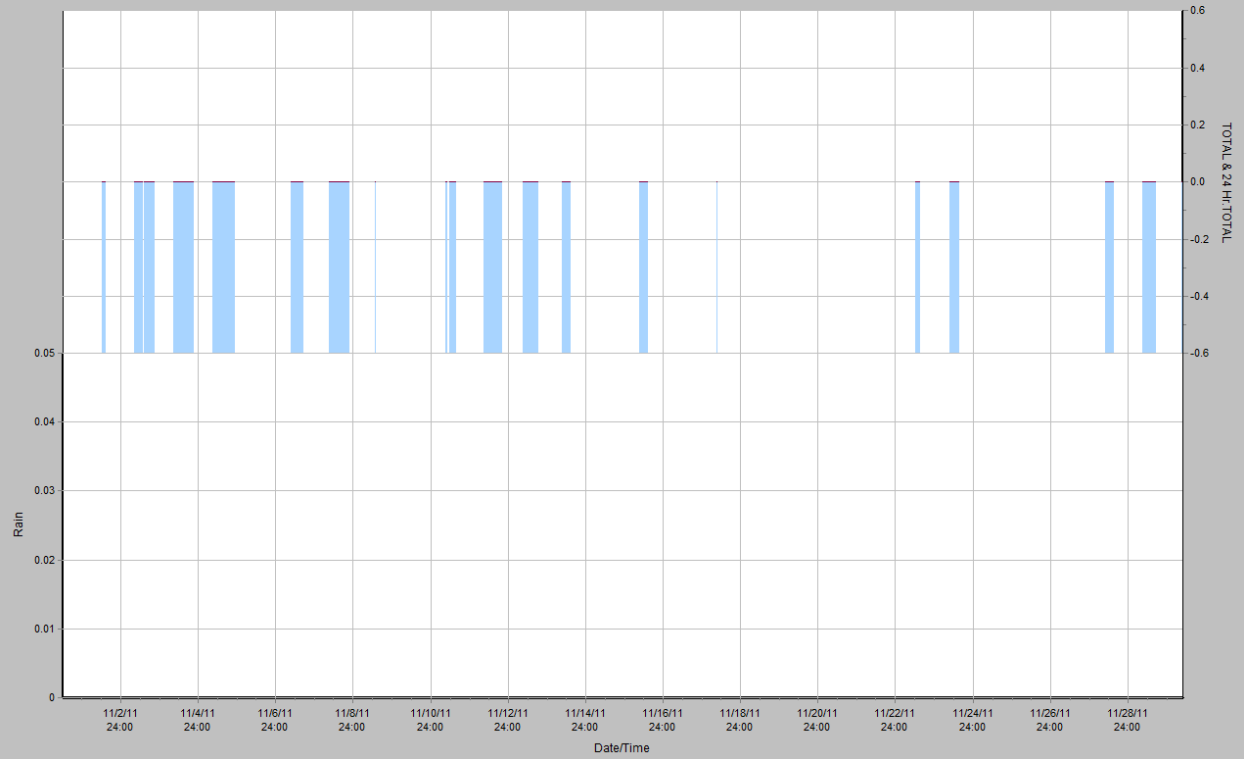
November 2011 Weather Graphs



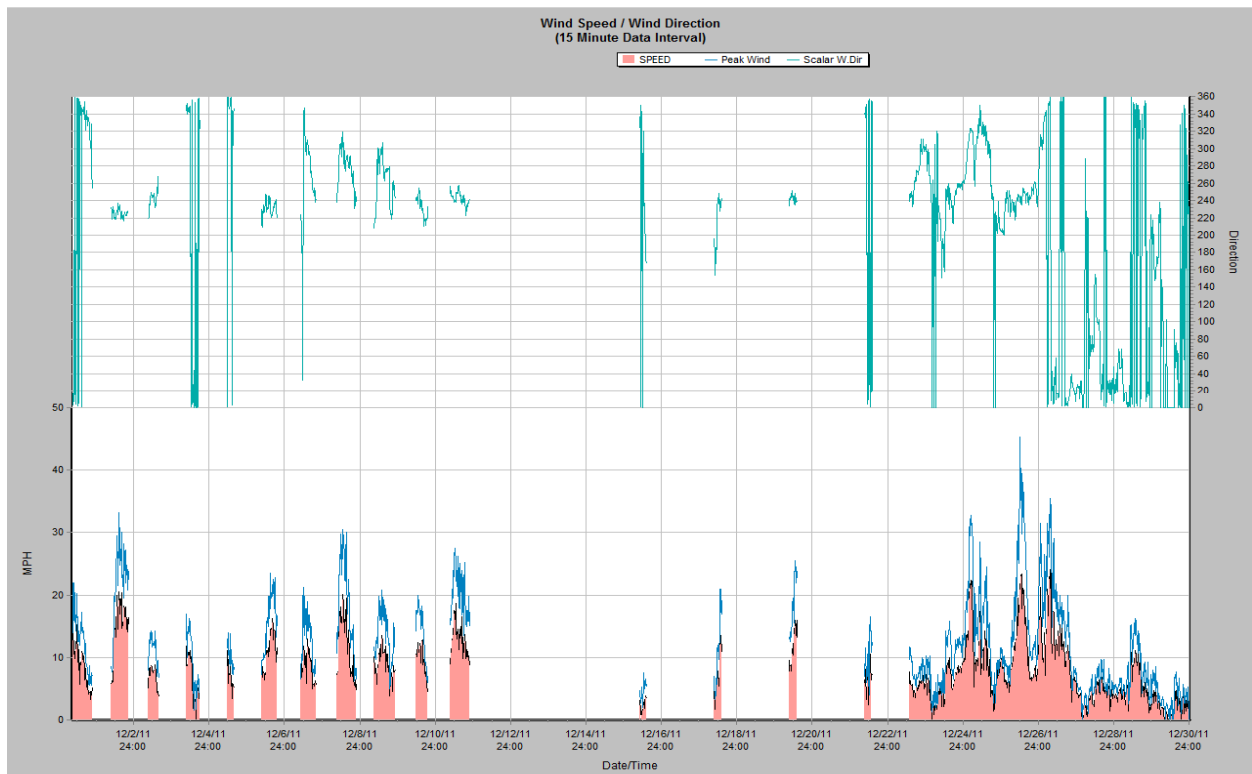
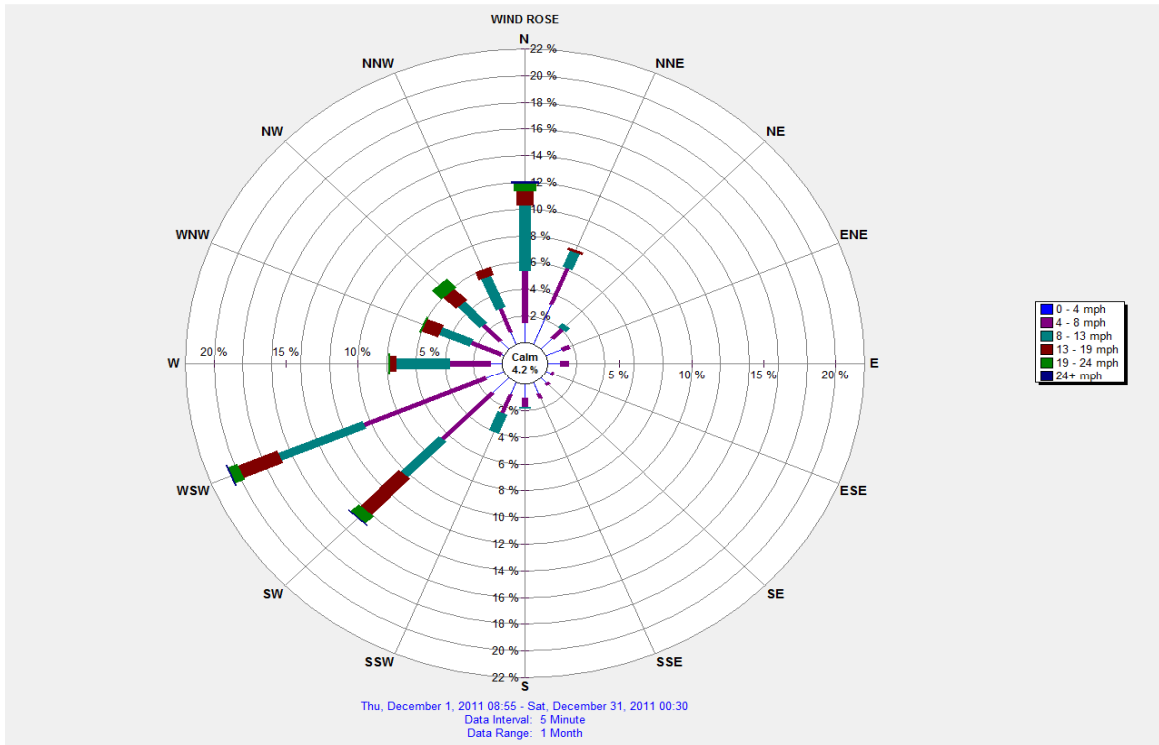


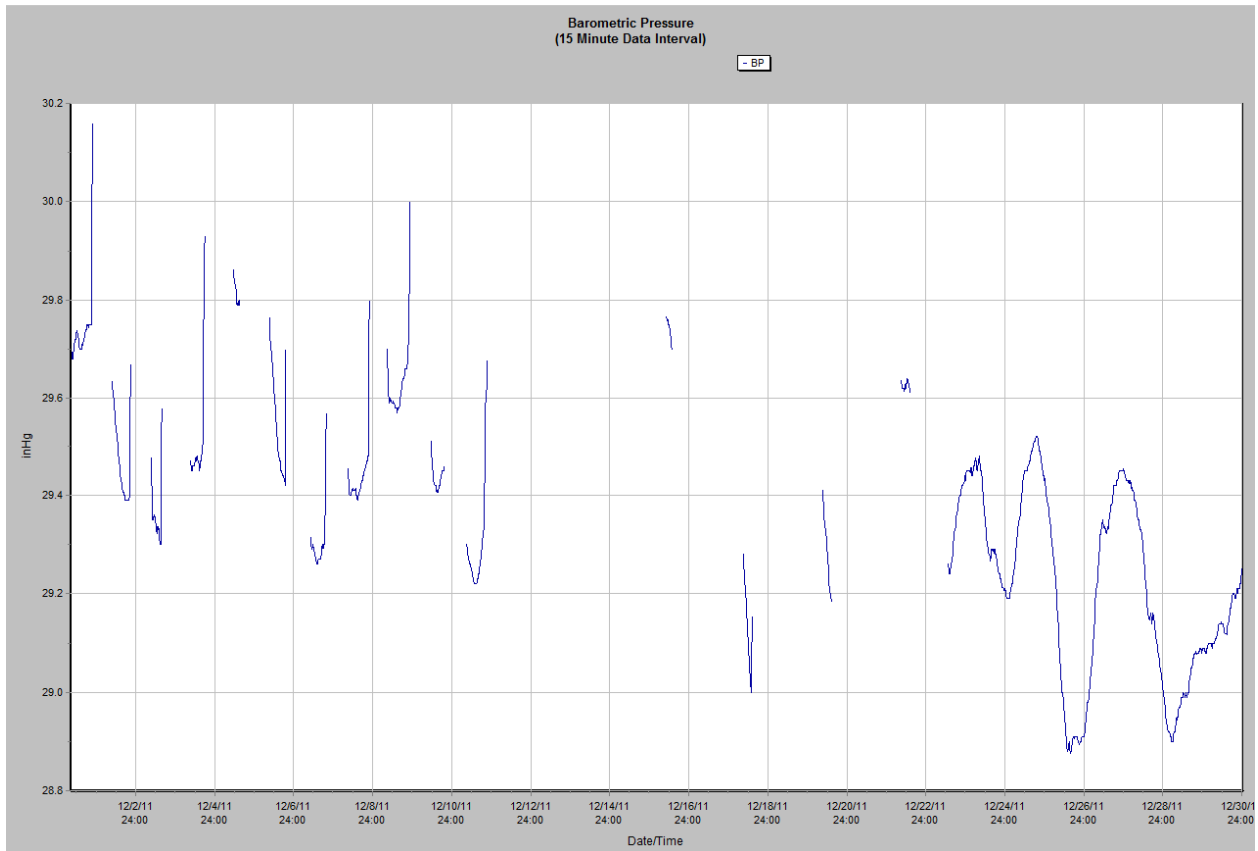
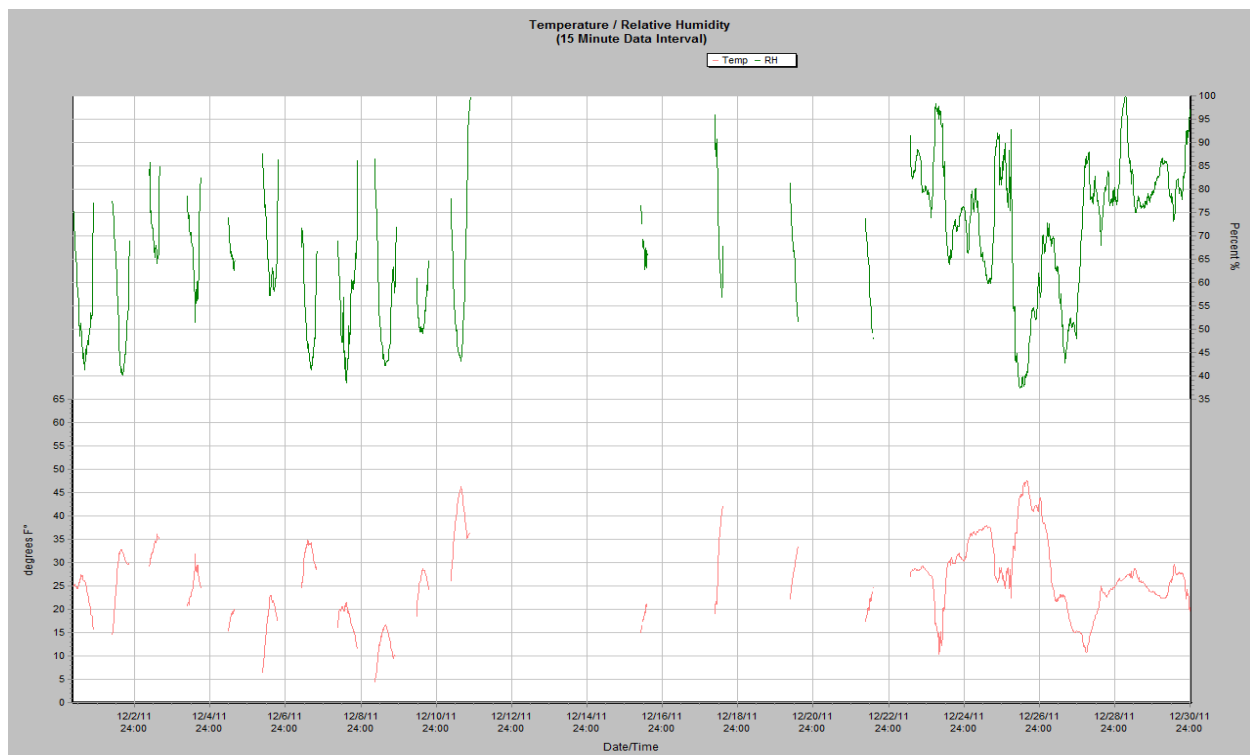
Precipitation and Totals
(15 Minute Data Interval)

Rain Total Daily total



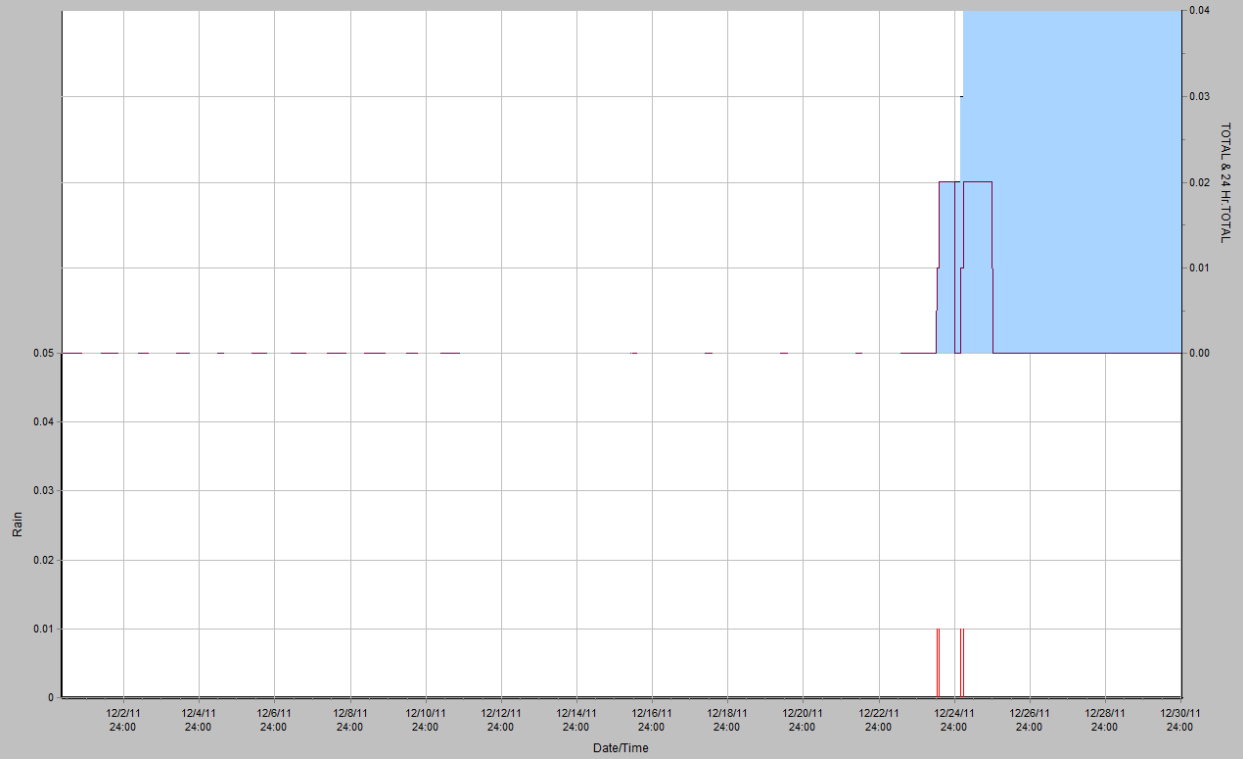
December 2011 Weather Graphs



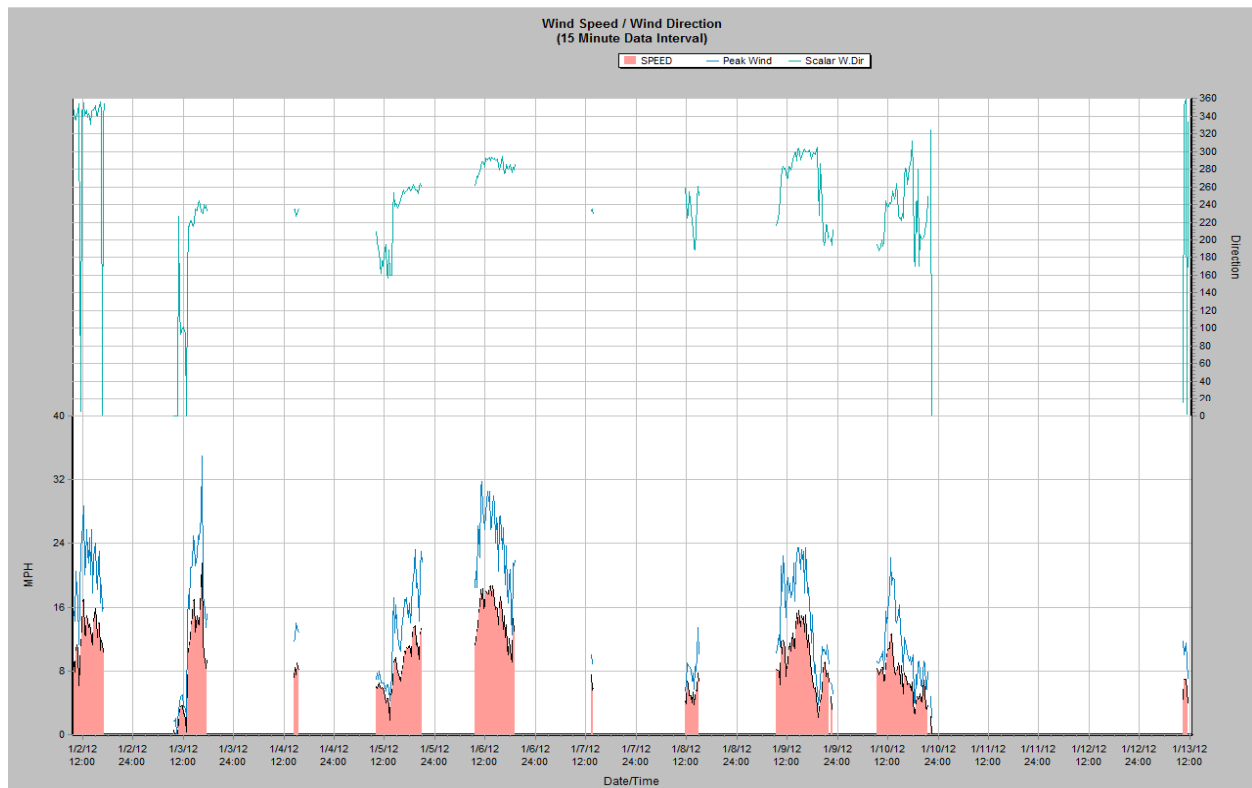
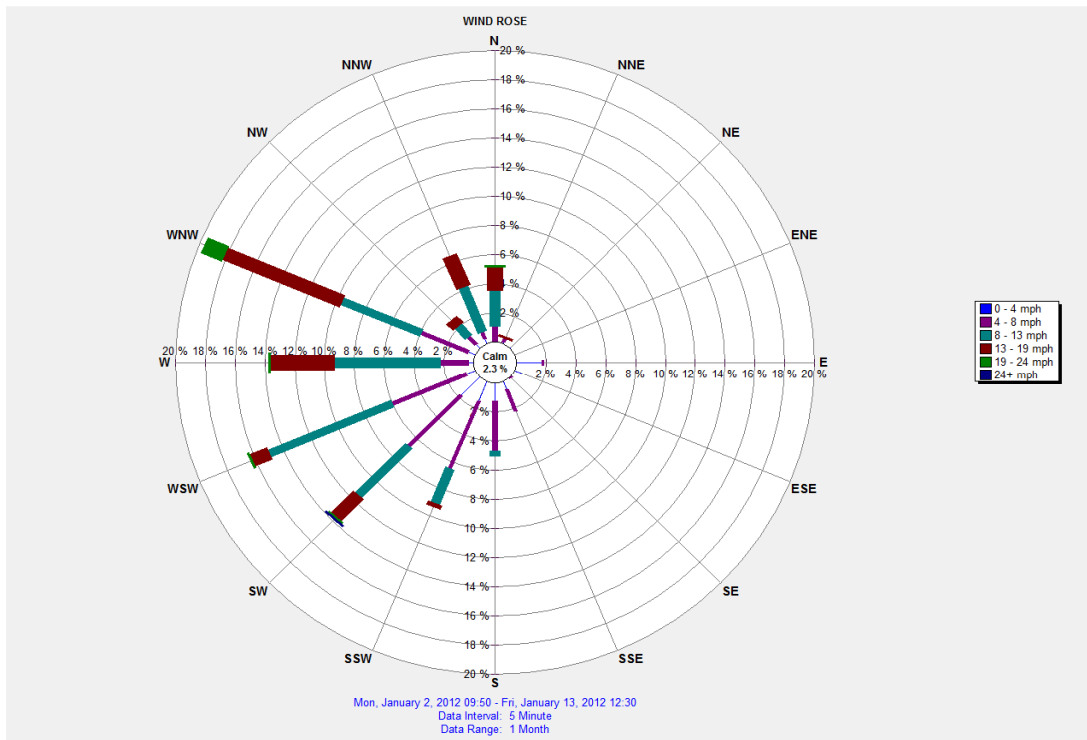


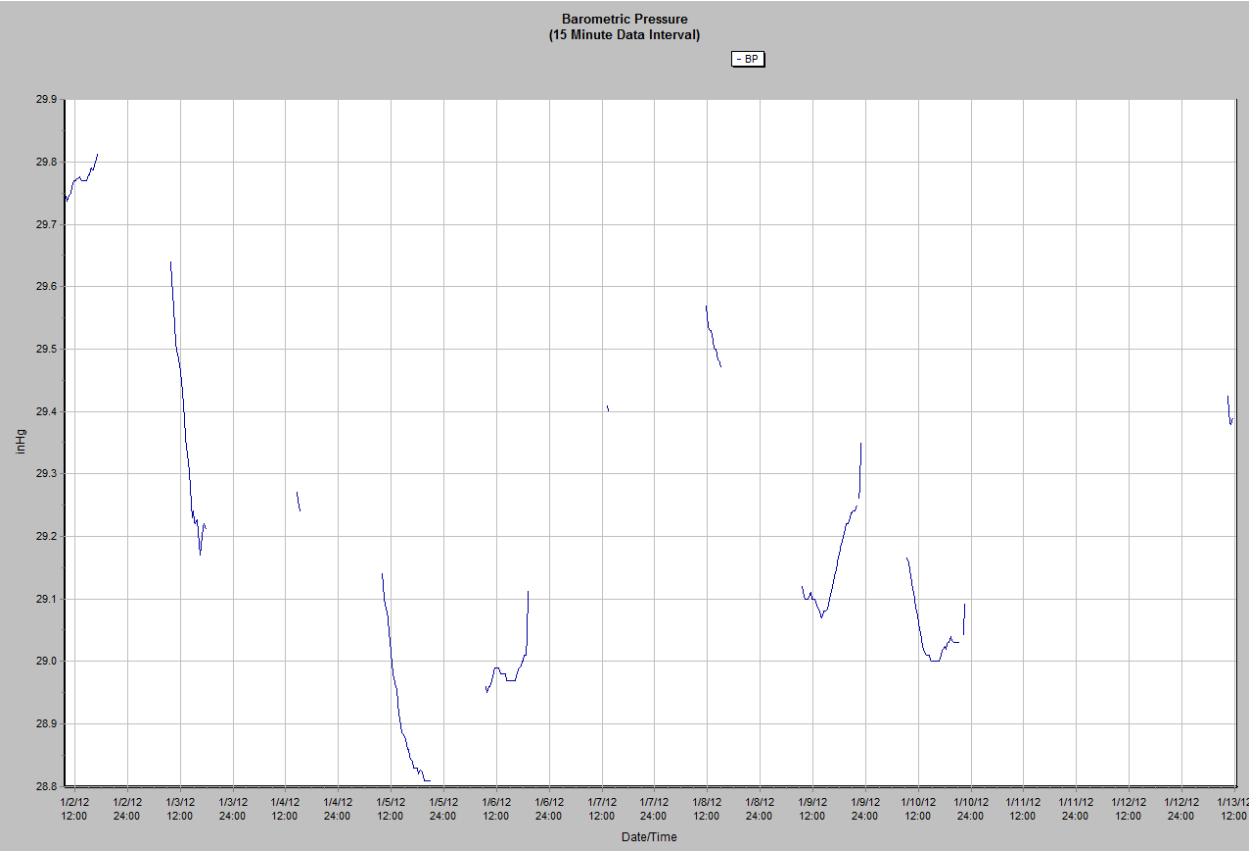
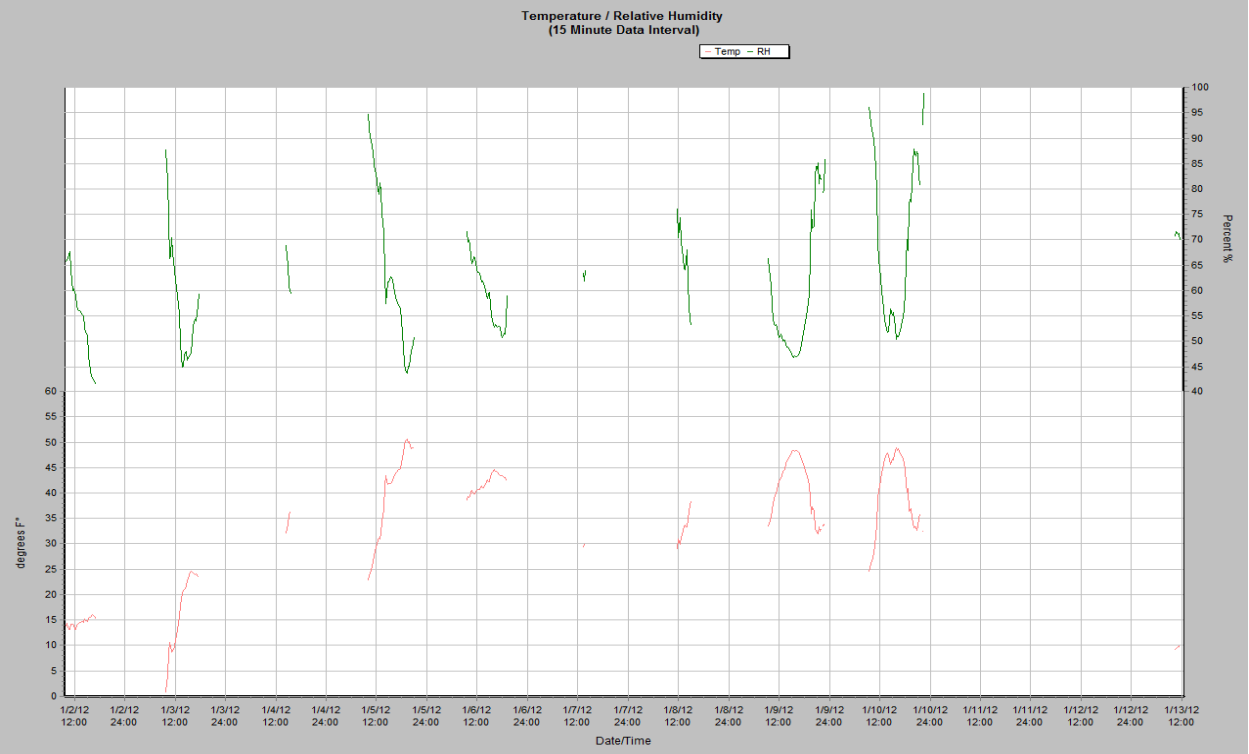
Precipitation and Totals
(15 Minute Data Interval)

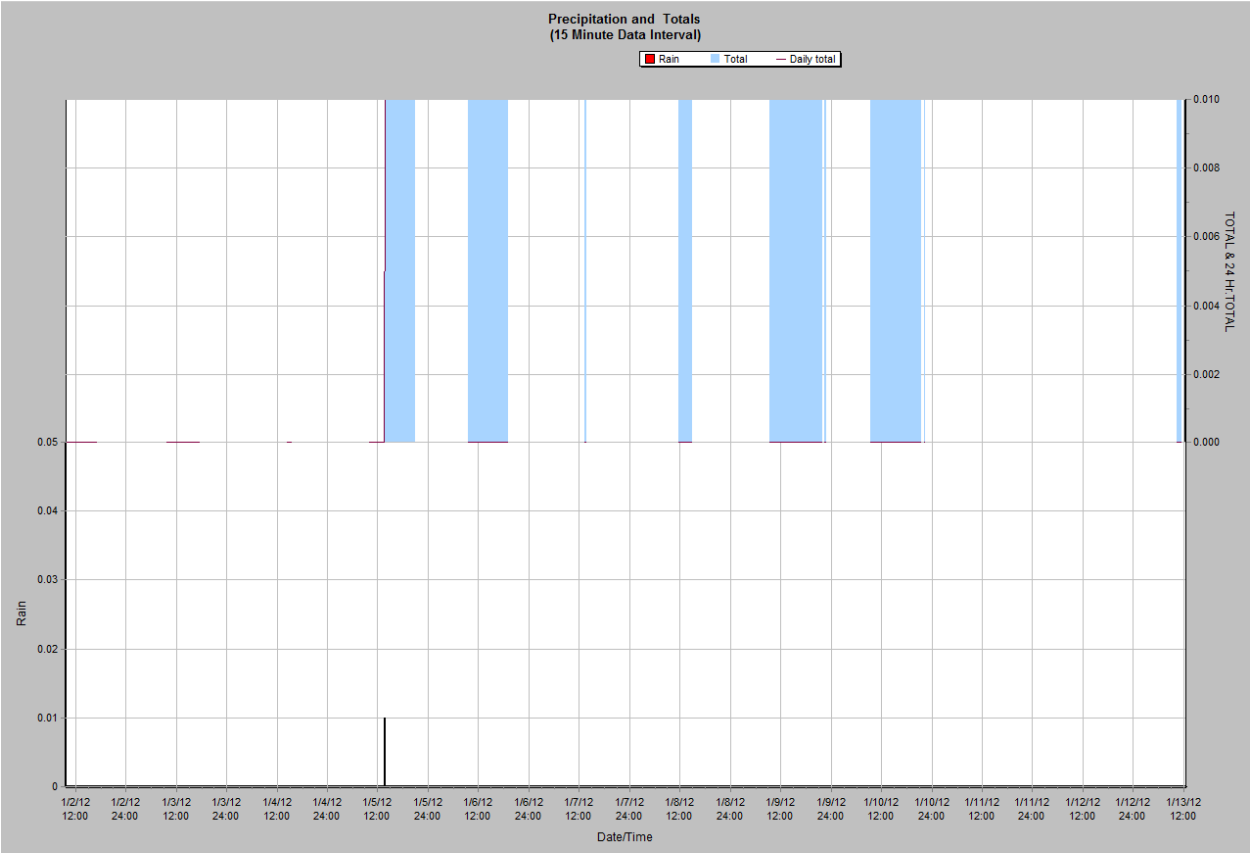
■ Rain ■ Total — Daily total



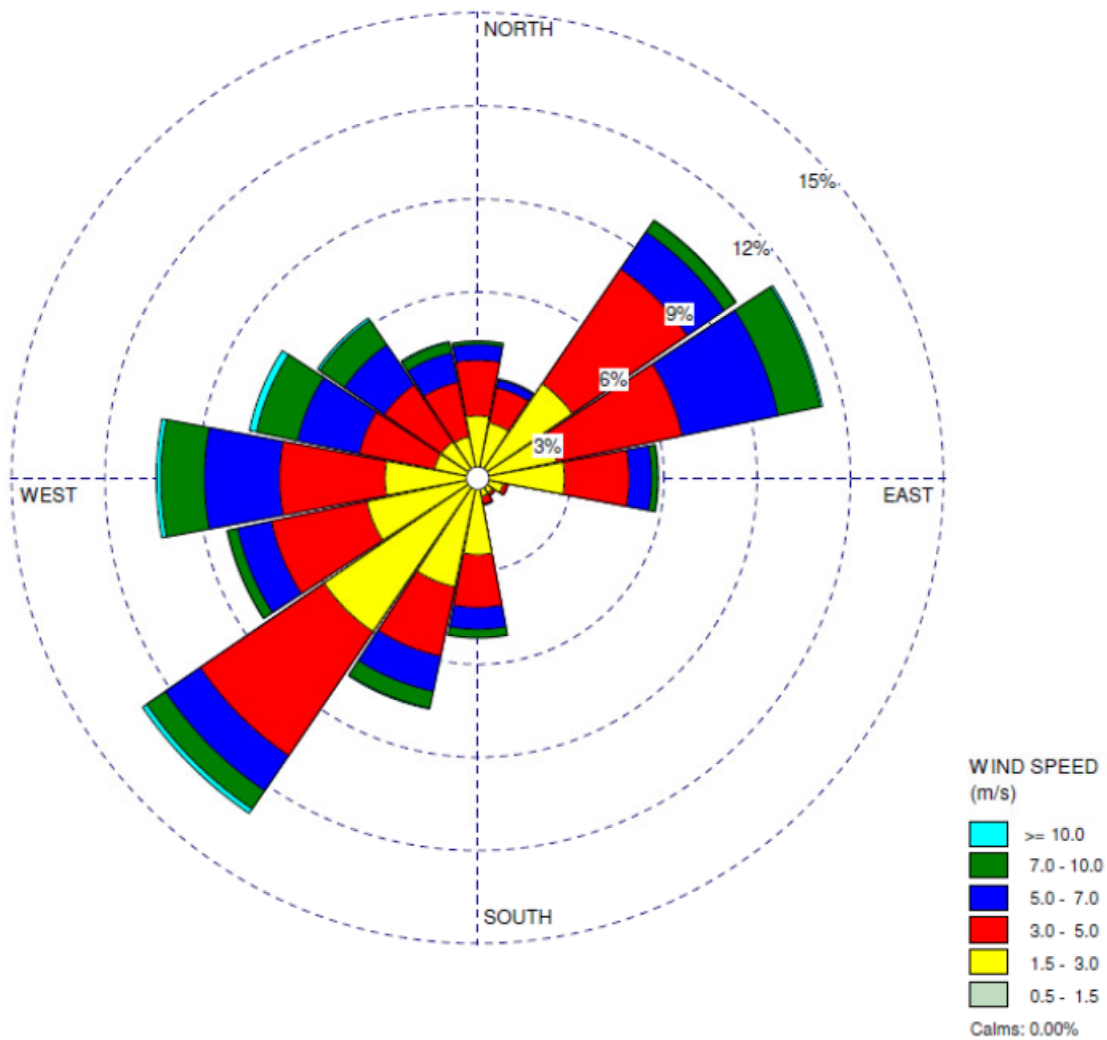
January 2012 Weather Graphs



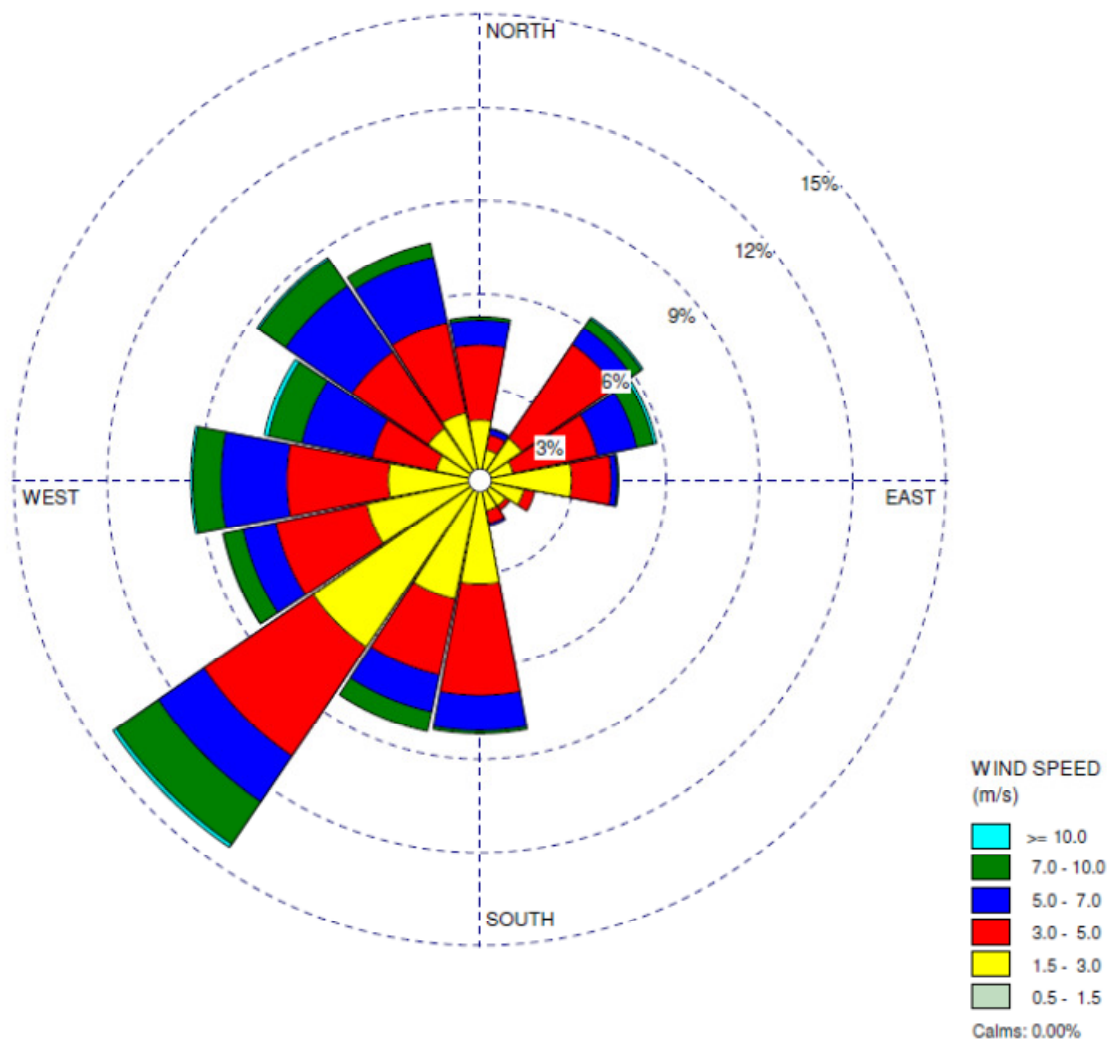




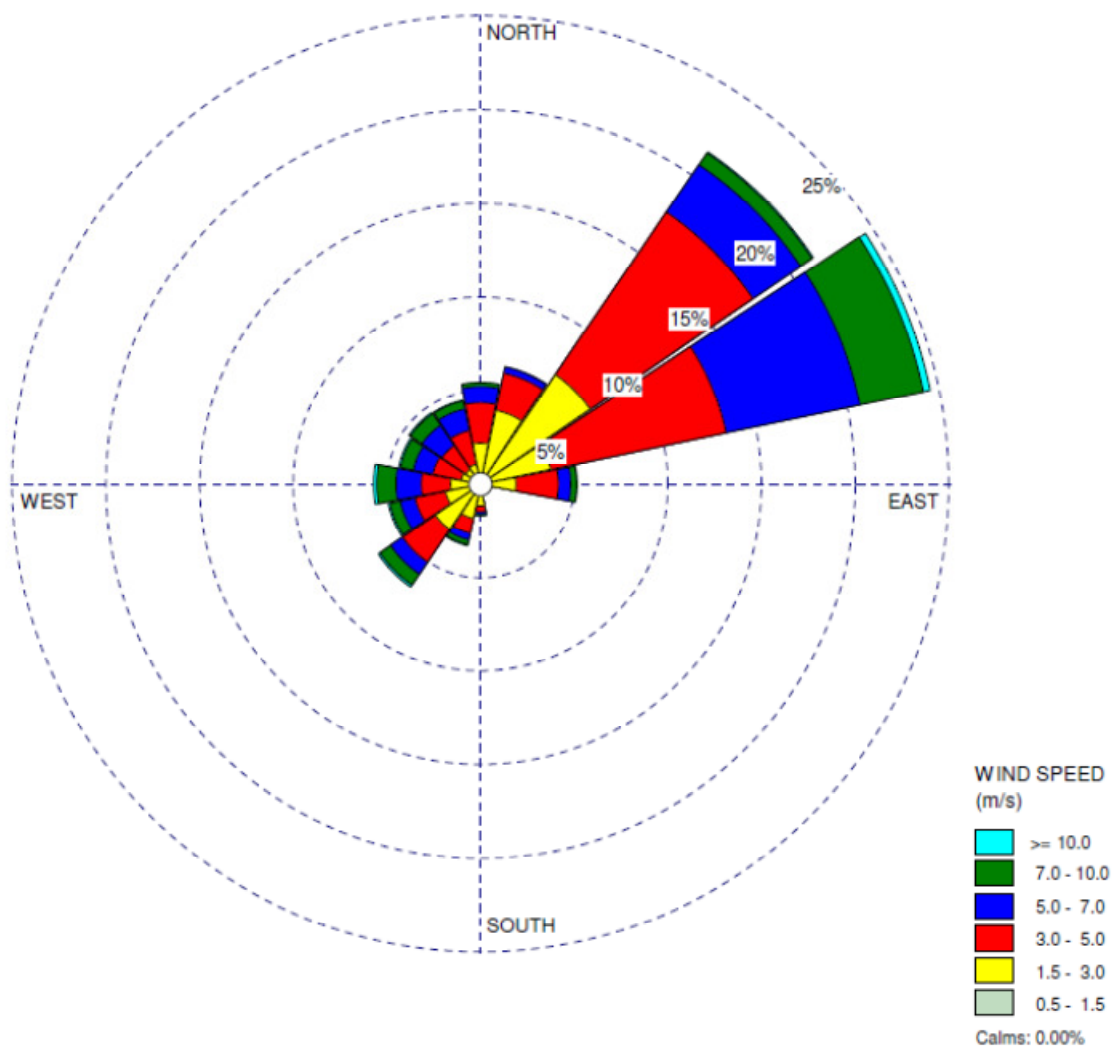
Bong Airport, Superior, Wisconsin
Fall 2006-2012 (September 1 - November 20)



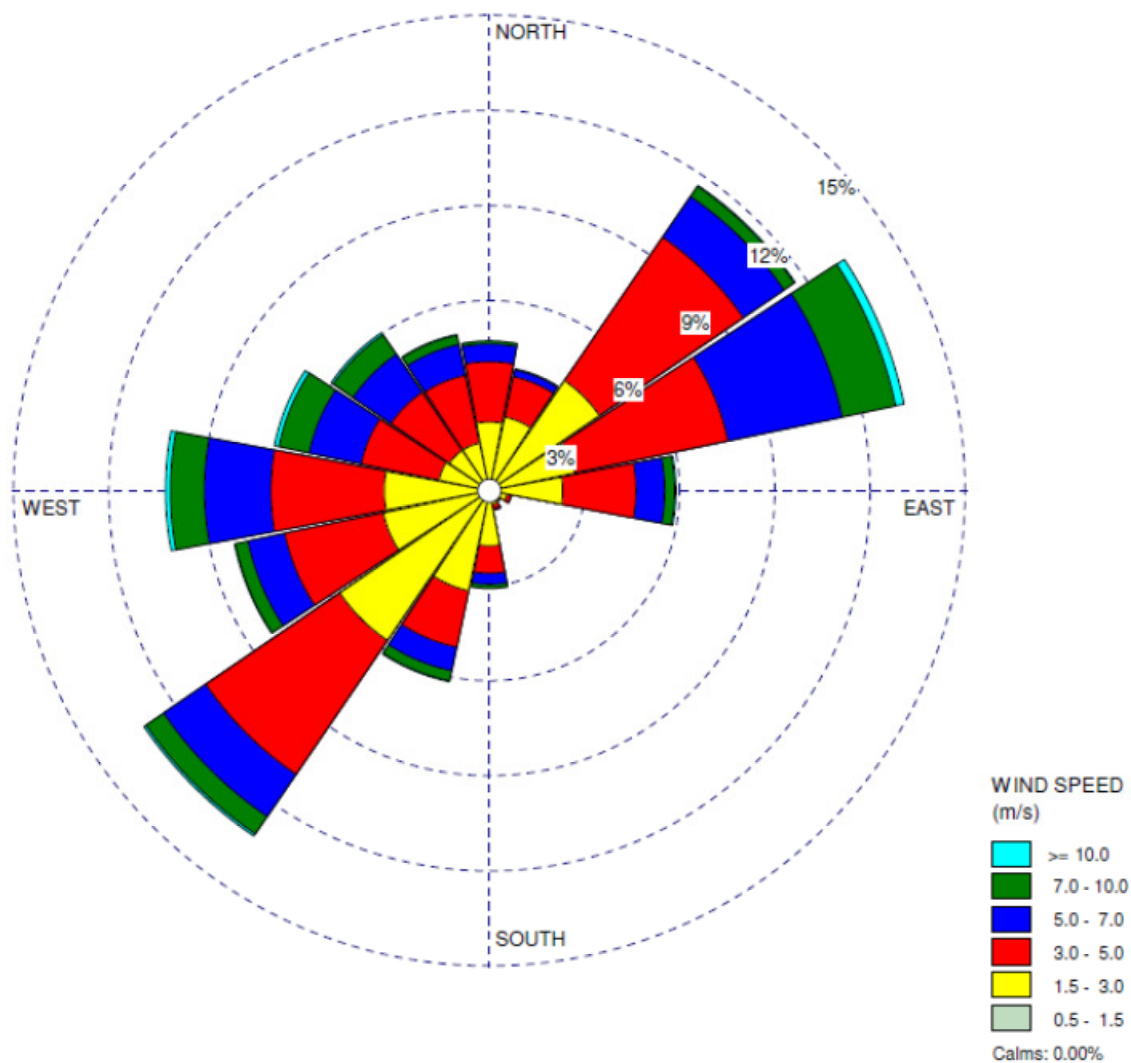
Bong Airport, Superior, Wisconsin
Fall 2006-2012 (November 5 - November 20)



Bong Airport, Superior, Wisconsin
Spring 2006-2012 (April 1 - July 1)



Bong Airport, Superior, Wisconsin
1/12006-2/2/2012



Bong Airport, Superior, Wisconsin
Summer 2006-2012 (July 1 - August 31)

