

# Temporary Debris Management Areas

---

Transfer Station – setup and operation

Jake Brady  
MPCA, Solid Waste

# Objectives

---

- Location
- Setup
- Communication



# Location

---

- Choose a location easily accessible for everyone
- Choose a location large if possible
- Choose a location that can allow heavy traffic

# Location – things to consider

---

- Be aware of and lessen the effects of operations that might irritate occupants of neighboring areas.
- Establish a buffer zone to abate concerns over smoke, dust, noise, and traffic.



# Setup

---

- Cones
- Signs
- Stations
- Personnel

# Setup – things to consider

---

- Create an easy entrance and exit
- Create a multi-staged operation
- Consider on-site traffic patterns and segregate materials based on planned volume
- There shall be no significant accumulation of debris. Instead, debris shall be constantly flowing to permitted sites









ENTER  
ONLY

Wed - Noon-7

Thu - 4-7

Fri - 4-7

Sat - Noon-7

Sun - Noon-7













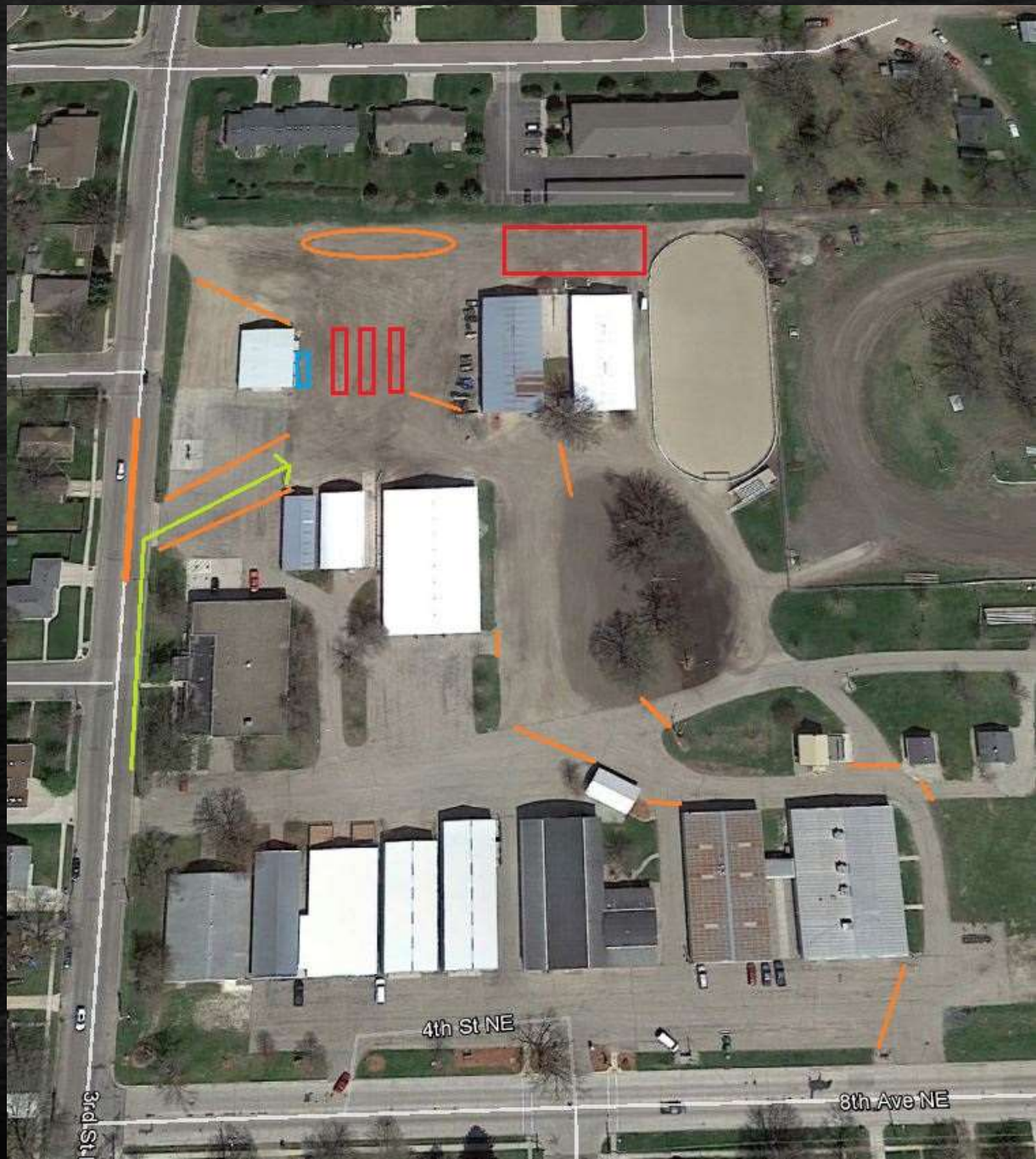




HAULERS  
ENTRY  
ONLY

Haulers ONLY  
DROP OFF  
ENTRANCE →







# Communication

---

- LGU
- Haulers
- Landfills
- Volunteers
- PCA staff

# Communication – things to consider

---

- Conduct morning briefings
- Conduct an end of the day debriefing
- Be prepared to inform the public with alternate disposal locations











# Overall things to consider

---

- The individuals that are coming and going are not paying customers, they are victims.
- You should make every attempt to accommodate them and assist as much as possible.
- Pay attention to what is working and what is not and make appropriate changes.
- The overall goal is to make this as easy of a process as possible, by eliminating any further stress.