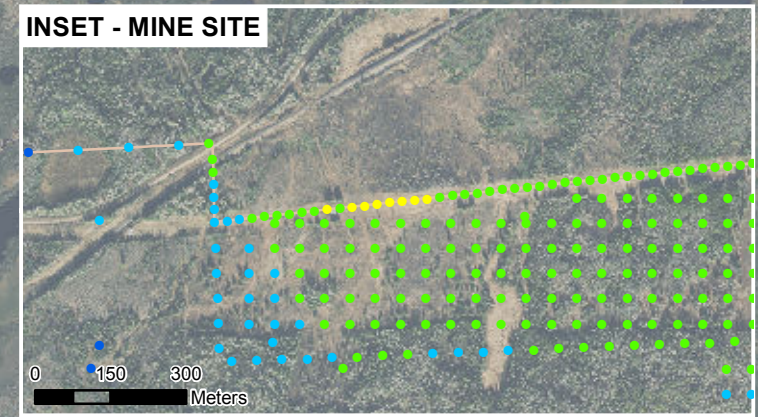
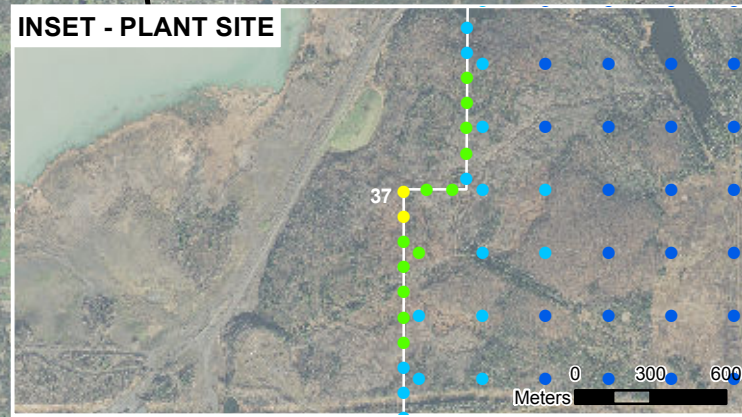
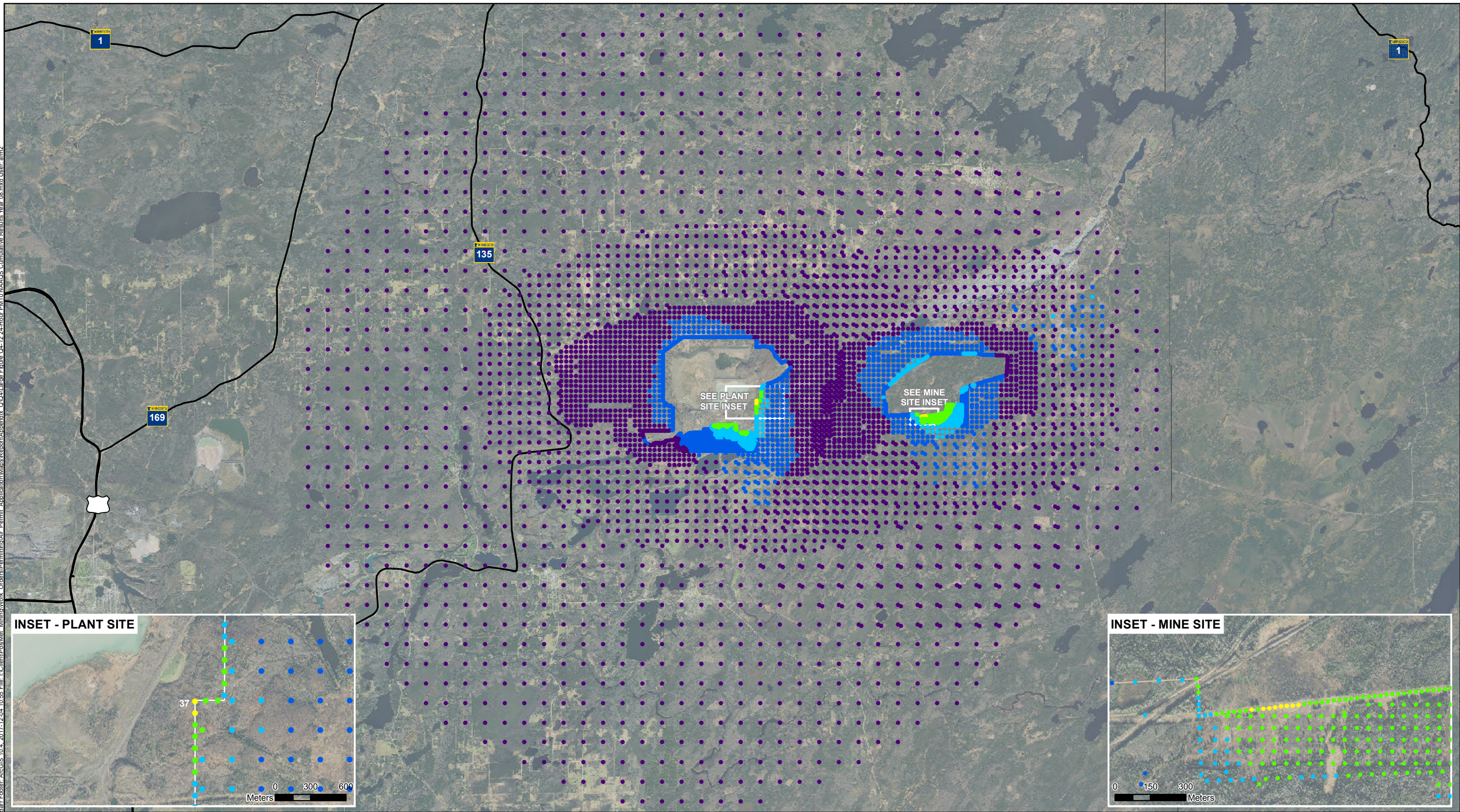
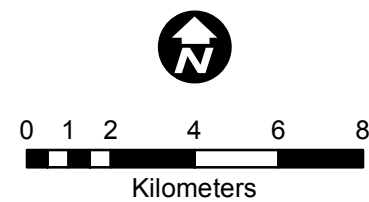


Barr Footer: ArcGIS 10.4, 2017-12-04 10:55 File: L:\Client\Polymet_Minima\Work_Orders\Permitting\Air_Permit_Application\Maps\Report\Appendix_Q10\Large_Figure_Q4-12-24-Hour-PM10-NAAQS_Cumulative_Results_Year_08.mxd User: am2



- 24-hour PM₁₀ NAAQS ($\mu\text{g}/\text{m}^3$)
 - 33.6 - 50.0
 - 50.0 - 75.0
 - 75.0 - 100.0
 - 100.0 - 125.0
 - 125.0 - 134.4
- Mine Site Effective Fence Line
 - Plant Site Effective Fence Line
- 24-hour PM₁₀ NAAQS is 150 $\mu\text{g}/\text{m}^3$
Background of 32 $\mu\text{g}/\text{m}^3$ included.



**24-HOUR PM₁₀ NAAQS CUMULATIVE
RESULTS - YEAR 8**
 NorthMet Project
 Poly Met Mining, Inc.

Large Figure Q4-12
 Appendix Q-4 Total Facility Modeling

Note: Inset shows areas with highest modeled concentrations.