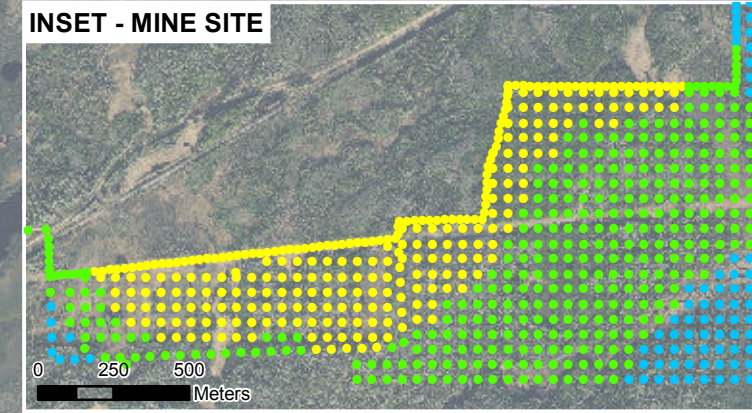
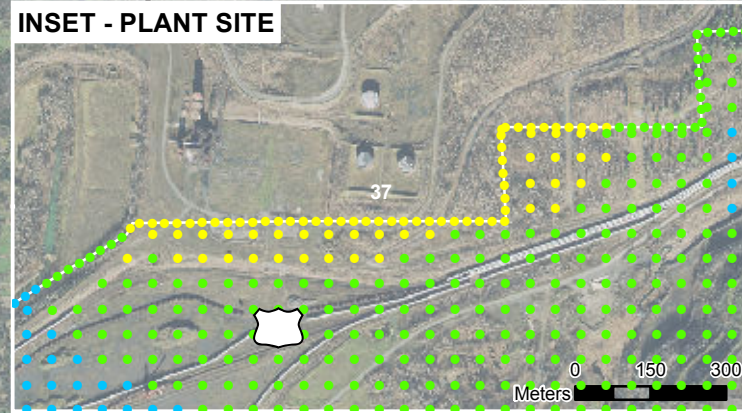
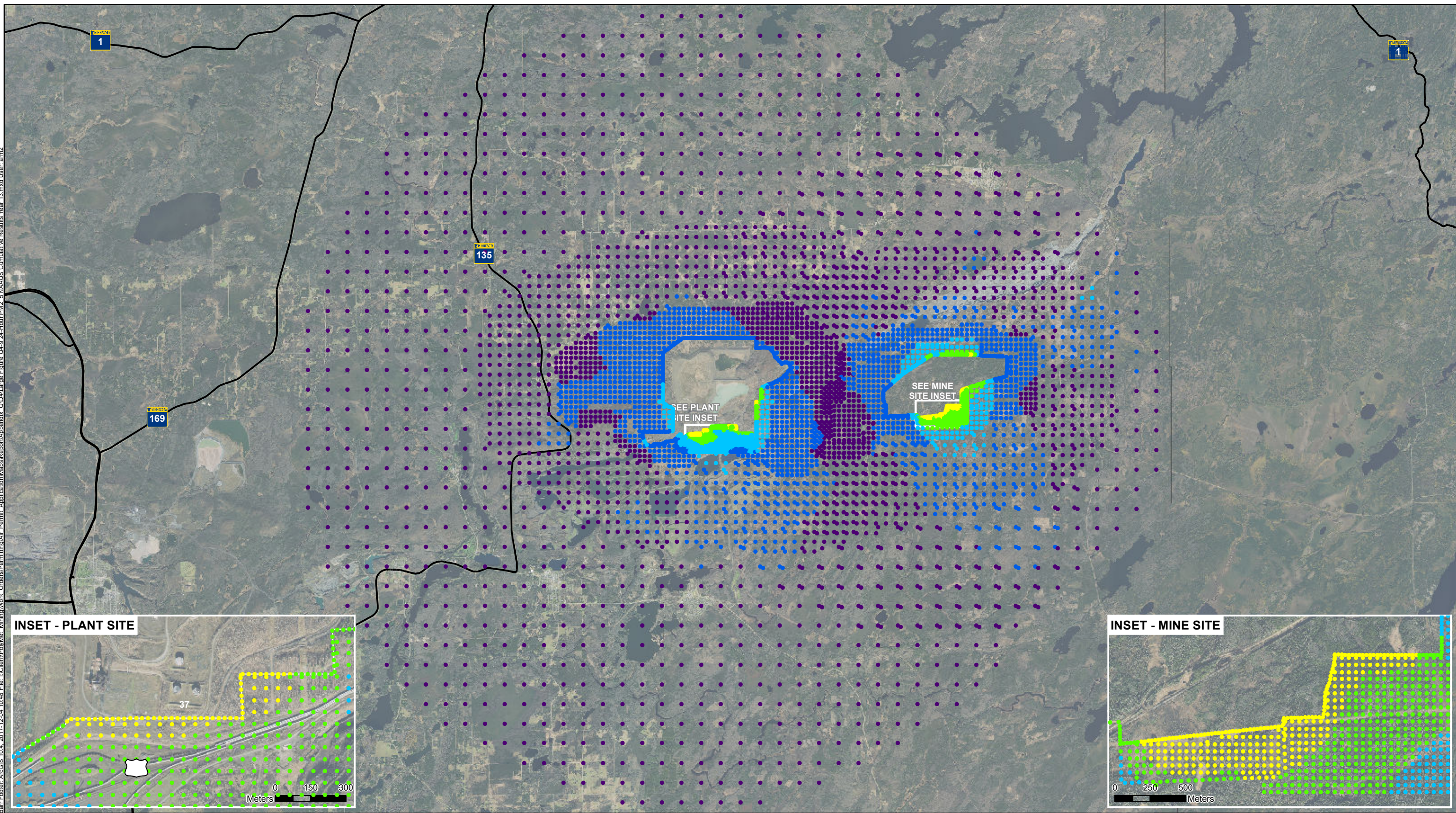
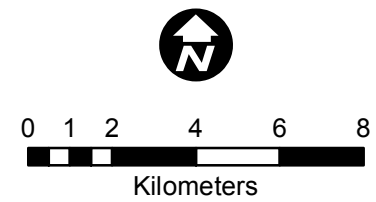


Bar Footer: ArcGIS 10.4, 2017-12-04 10:48 File: L:\Client\Polymet\Mining\Work Orders\Permitting\Air Permit\_Application\Maps\Report\Appendix Q104\Large Figure Q4-9 24-Hour PM2.5 NAAQS Cumulative Results Year 13.mxd User: arm2



- 24-hour PM<sub>2.5</sub> NAAQS (µg/m<sup>3</sup>)
  - 16.4 - 18.0
  - 18.0 - 21.0
  - 21.0 - 24.0
  - 24.0 - 27.0
  - 27.0 - 31.4
- Mine Site Effective Fence Line
  - Plant Site Effective Fence Line
- 24-hour PM<sub>2.5</sub> NAAQS is 35 µg/m<sup>3</sup>  
Background of 16 µg/m<sup>3</sup> included.



24-HOUR PM<sub>2.5</sub> NAAQS CUMULATIVE RESULTS - YEAR 13  
NorthMet Project  
Poly Met Mining, Inc.

Large Figure Q4-9  
Appendix Q-4 Total Facility Modeling

Note: Inset shows areas with highest modeled concentrations.