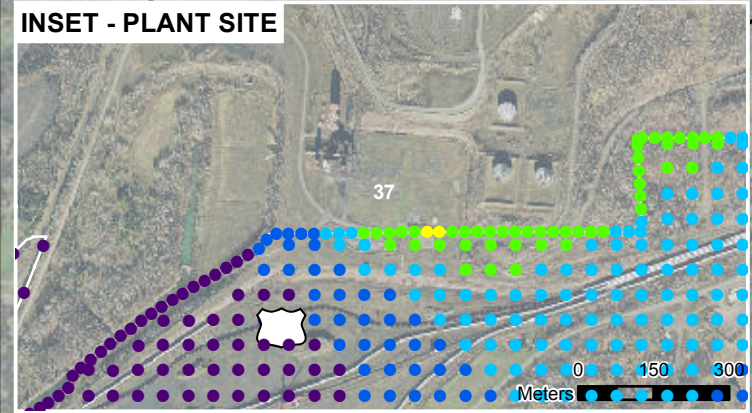
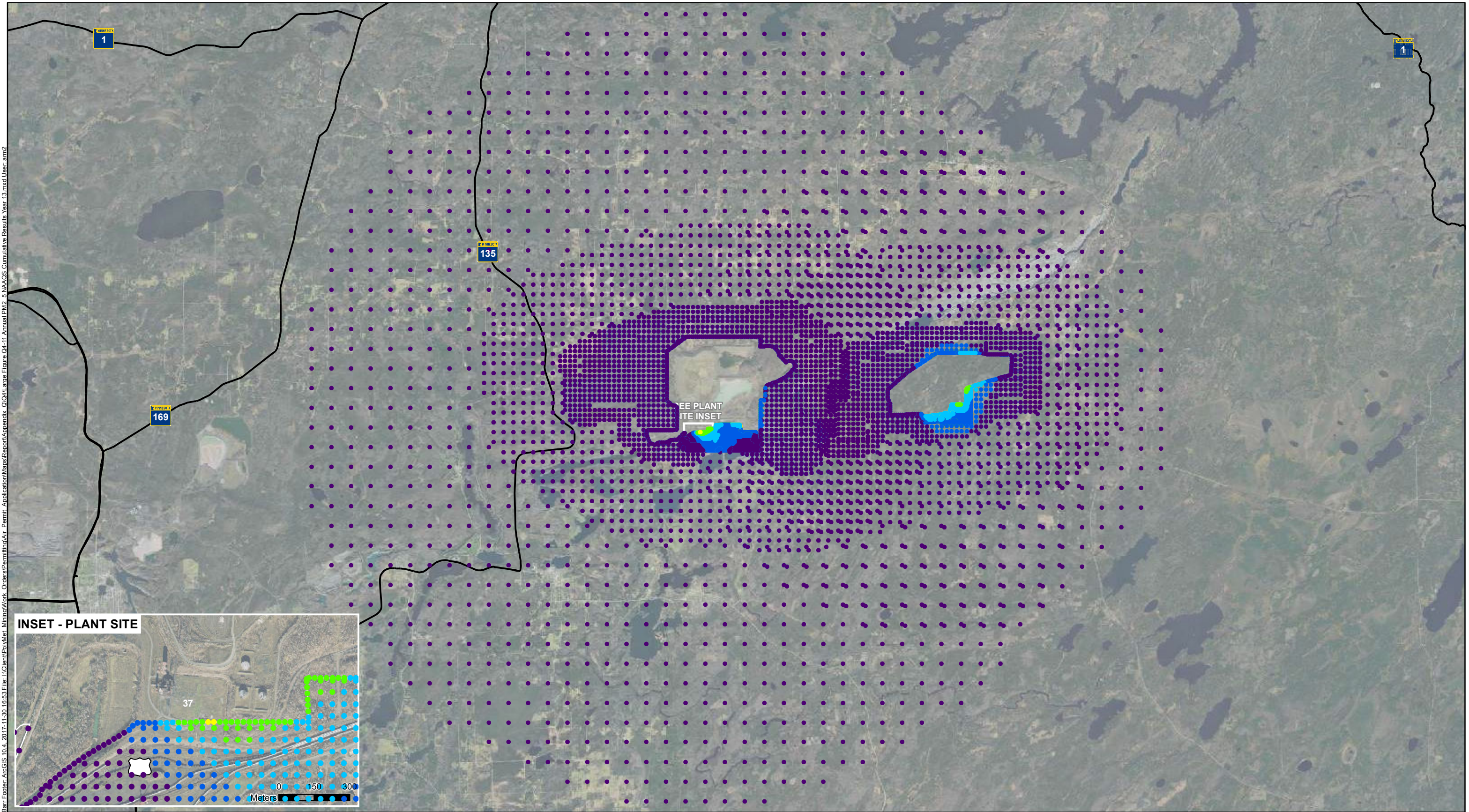
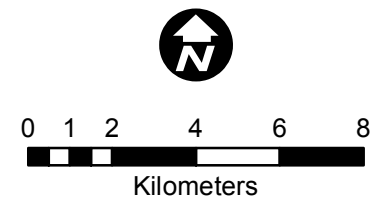


Barr Footer: ArcGIS 10.4, 2017-11-30 16:53 File: L:\Client\BowMet_Minima\Work_Orders\Permitting\Air_Permit_Application\Mines\Report\Appendix_Q104_Large_Figure_Q4-11_Annual_PM2.5_NAAQS_Cumulative_Results_Year_13.mxd User: am2



- 24-hour PM_{2.5} NAAQS (µg/m³)
- 16.4 - 18.0
 - 18.0 - 21.0
 - 21.0 - 24.0
 - 24.0 - 27.0
 - 27.0 - 31.4
- Mine Site Effective Fence Line
— Plant Site Effective Fence Line
- 24-hour PM_{2.5} NAAQS is 12 µg/m³
Background of 6.2 µg/m³ included.



ANNUAL PM_{2.5} NAAQS CUMULATIVE
RESULTS - YEAR 13
NorthMet Project
Poly Met Mining, Inc.

Large Figure Q4-11
Appendix Q-4 Total Facility Modeling

Note: Inset shows areas with highest modeled concentrations.