



**Minnesota Pollution
Control Agency**

Public Informational Meeting

Draft Air Emissions Permit For Metro Transit Light Rail O&M Facility

6:30 Presentation on Draft Permit

6:50 Question and Answer

7:55 Wrap-up



Minnesota Pollution
Control Agency

Public Informational Meeting

- Application Review
- Draft Permit
- Public Participation

```
graph LR; A[Permit Application] --> B[MPCA Review]; B --> C[Public Review EPA Review]; C --> D[Permit Decision]
```

Permit
Application

MPCA
Review

Public
Review
EPA Review

Permit
Decision



- Spray booth
- Emergency generator
- Maintenance activities
- Natural gas combustion for heating

MPCA Review

STANDARD

Processes/equipment

Emissions

Operational Limits

Emission Limits

Federal Rules

State Rules

AS NEEDED

Air Emissions Risk
Assessment

Criteria Pollutant
Modeling

Ambient Monitoring
Data

STATUTE

Cumulative Levels and
Effects Analysis

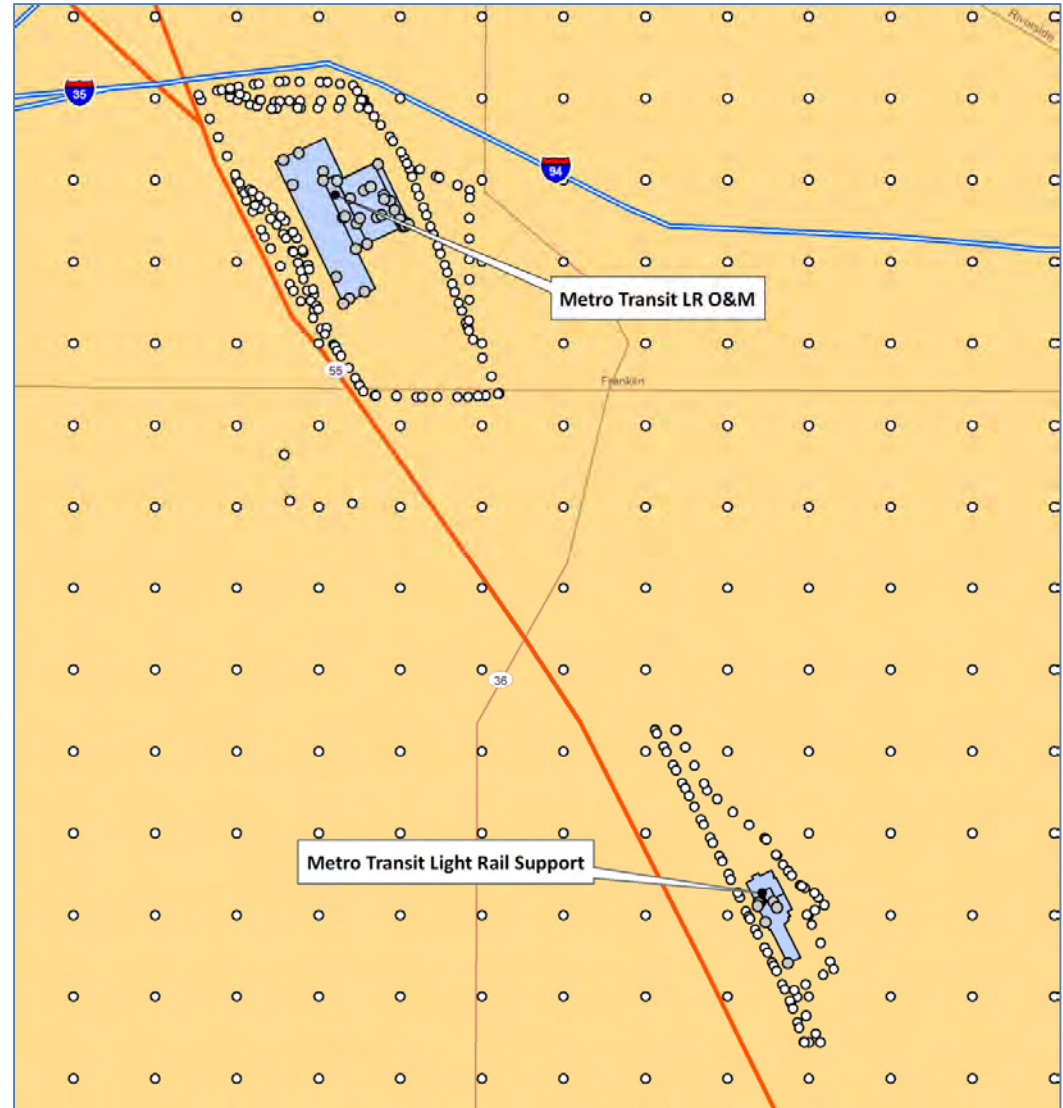
Statewide Risks
Screening Model

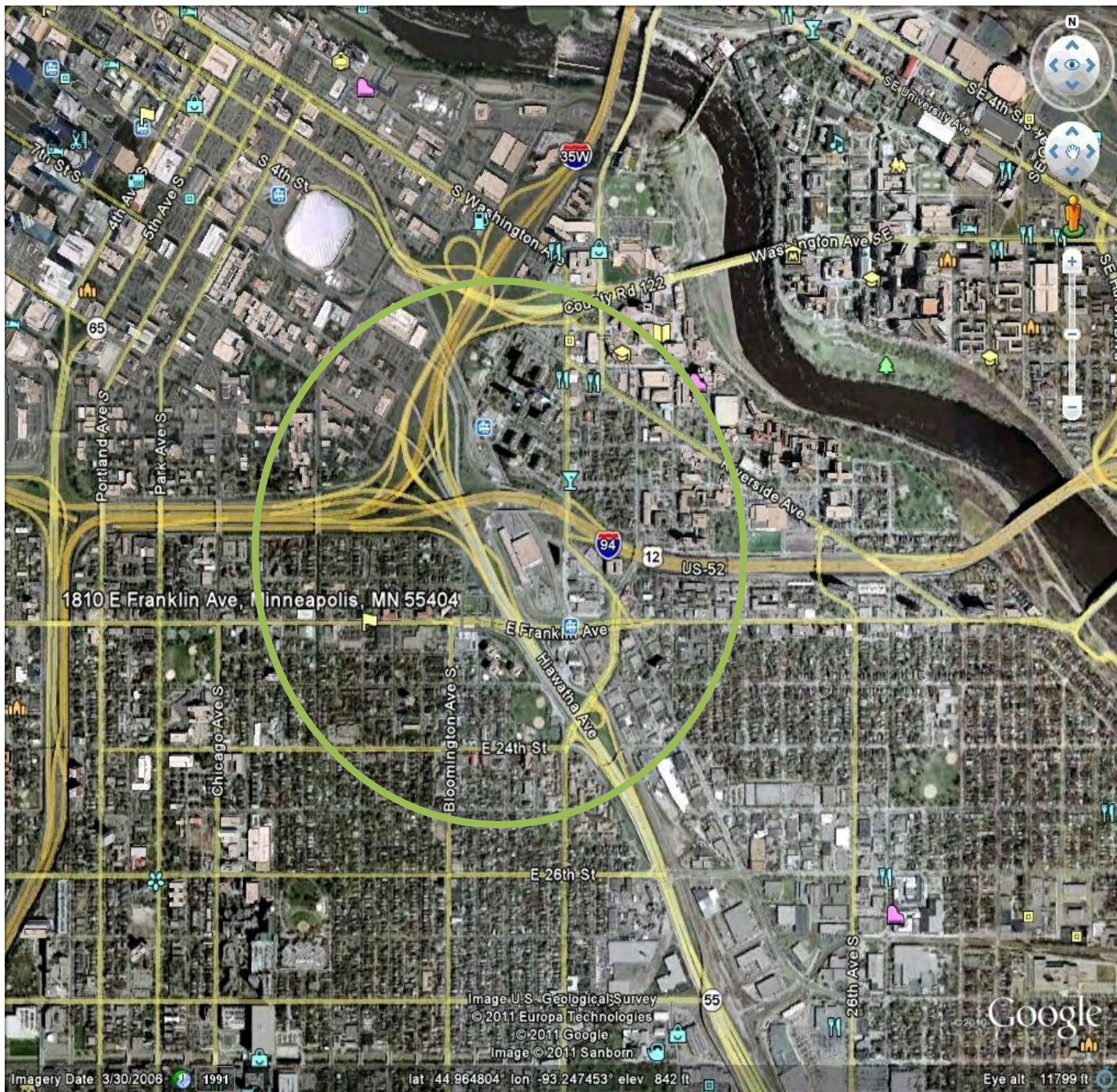
National Air Toxics
Assessment

Environmental Health
Data

Sources Included in the Modeling

- Natural gas combustion
- Maintenance of rail cars (including maintenance welding)
- Spray booth





1810 E Franklin Ave, Minneapolis, MN 55404

Image © U.S. Geological Survey
© 2011 Europa Technologies
© 2011 Google
Image © 2011 Sanborn

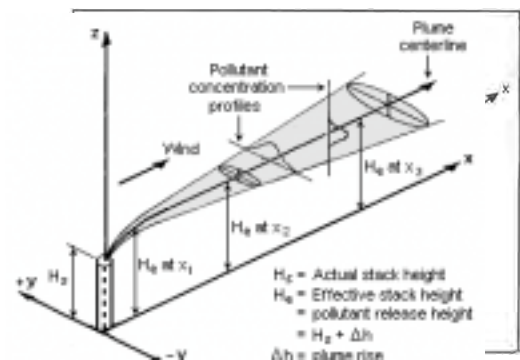
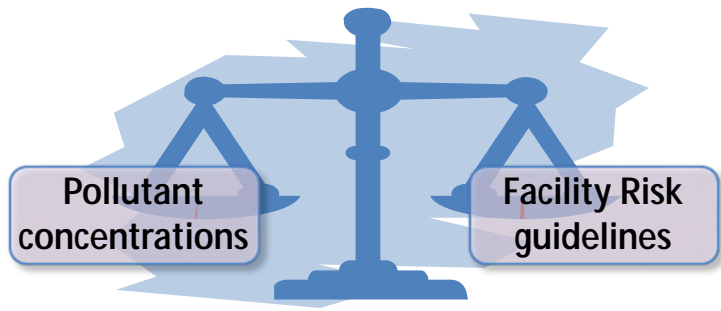
Imagery Date: 3/30/2006

lat: 44.964804° lon: -93.247453° elev: 842 ft

Eye alt: 11799 ft

System/Endpoint	Acute (short term exposure)	Chronic (lifetime exposure)
Respiratory	CL&E	
Developmental/Reproductive/Endocrine		
Hematological (e.g. blood, lymphatic and immune)		
Neurological (e.g. central nervous)		
Eyes (irritant)		
Alimentary (e.g. digestive)		
Bone & teeth		
Cardiovascular	CL&E	
Kidney (e.g. renal)		
Hepatic (e.g. liver)		
Cancer		

These health endpoints were screened in for further analysis, this screening does not indicate a health impact



Air Emissions Risk Analysis Results

	Facility Results	Facility Risk Guideline	Screening Value for the CL&E Analysis
Acute Inhalation	0.13	1.0	0.1
Non-Cancer, chronic (urban gardener scenario)	0.02	1.0	0.1
Cancer (urban gardener scenario)	0.027 in 100,000	1 in 100,000	0.1 in 100,000

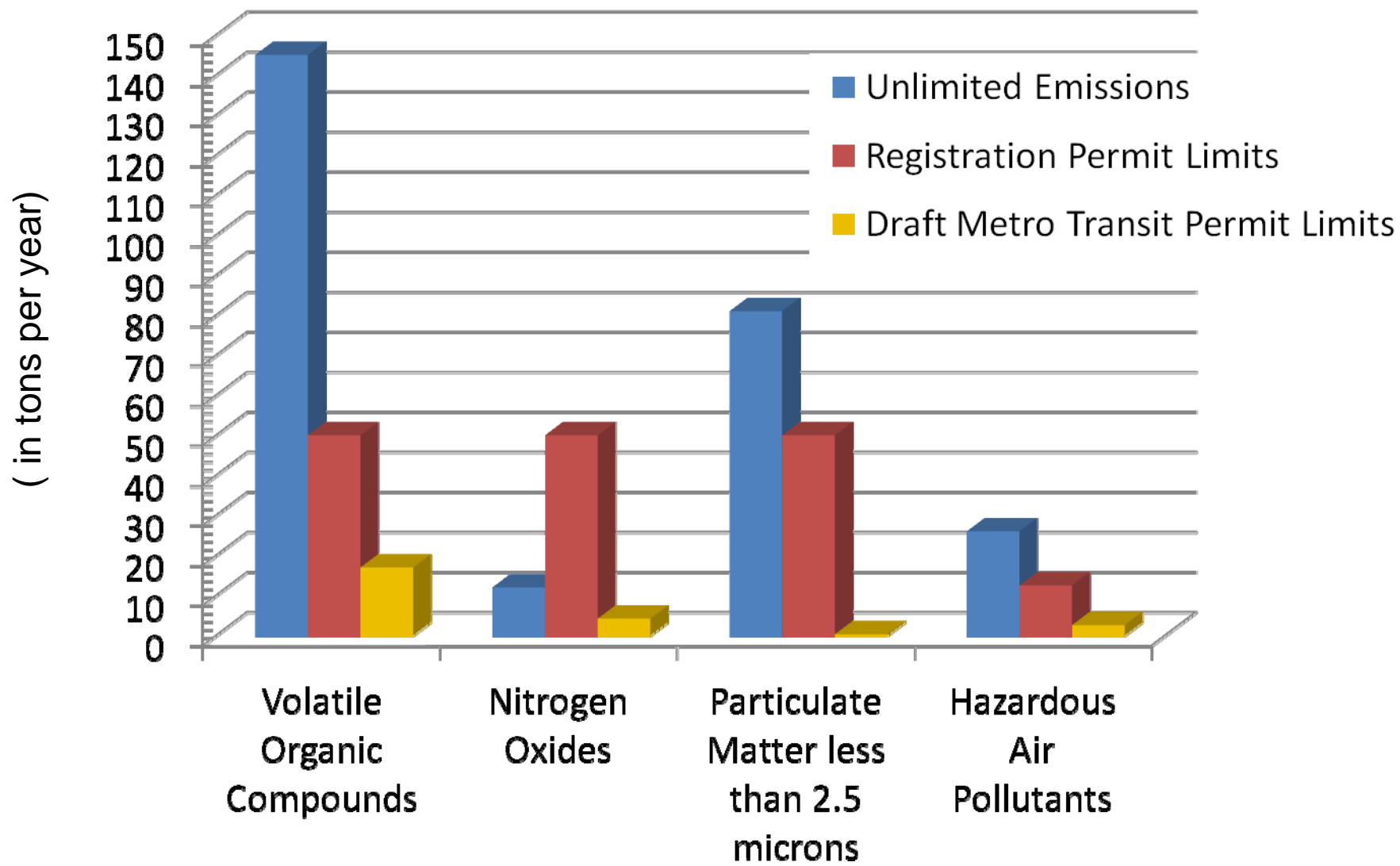
	Operational Limits	Emission Limits
Spray booth	Less than 5,000 gallons paint per year Less than 35 gallons paint per day Use 2-panel filter system No paints with cadmium, lead, manganese, nickel or chromium	Less than 8.4 tons VOC per year Less than 1.53 tons total HAP per year Less than 1.37 tons single HAP per year
Emergency Generator	Emergency use only <500 hours/year Natural gas only	
Maintenance Activities		Less than 8.8 tons VOC per year Less than 1.0 tons total HAP per year Less than 0.51 tons single HAP per year
Natural Gas Heating	Fuel usage limited to natural gas only Fuel usage limit at 20% of total capacity	

VOC = volatile organic compounds

HAP = hazardous air pollutants

Monitoring and Recordkeeping

	What?	Daily	Monthly	Quarterly	Annual
Spray Booth	Paint Usage	X	X		X
	Contents of paints (VOCs, HAPs, metals, solids, etc)	X			
	Control Equipment - inspections	X		X	
Maintenance Activities	Maintenance product usage		X		X
	Contents of maintenance products (VOCs, HAPs)		X		X
Emergency generator	Usage and regular maintenance				X
Heating Equipment	Natural gas usage		X		X



Public Review and Comment

Draft permit and technical support document available on MPCA website, at the Franklin Library, or at MPCA offices.

Comments, requests and petitions must be in writing

Submit comments tonight or by mail, email, fax, or hand deliver to MPCA Offices

Comments must be received at MPCA by **4:30 p.m. on May 26**

- The draft permit meets all state and federal rules and laws.
- MPCA staff conducted a comprehensive review of the potential impacts, including analysis of the cumulative levels and effects of past and current pollution as required by statute.
- The potential impacts calculated from the facility emissions are small and are not likely to cause health impacts.