

Destruction photo examples for VW and DERA vehicles and equipment replacement grants

Volkswagen (VW) settlement replacement grants require that the old vehicle's engine and frame be disabled so it cannot operate and pollute again. As proof, a minimum of **six** photos are requested to validate this work has been done. The following photos are good examples of what the Minnesota Pollution Control Agency (MPCA) needs in order to reimburse the grant award.



Photo tips to speed up your reimbursement:

- Make sure your photos of the vehicle/equipment being disabled match the same vehicle/ (VIN, engine family, make, model, year, etc.) as your vehicle application information.
- If your grant has multiple vehicles, can MPCA staff can tell the difference between your various disabled vehicle photos?
- Take your time to record and label accurate photos so we can identify a specific vehicle and engine.
- MPCA may prefer one vehicle photo series per PDF

1. Side profile of old vehicle

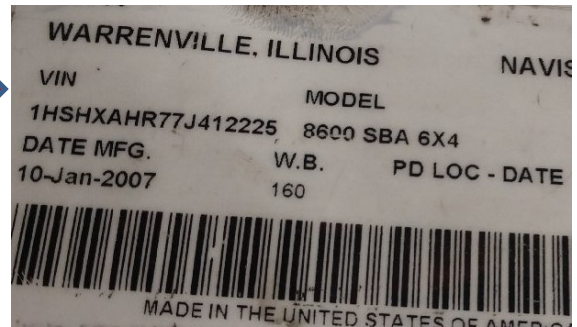
A side profile or ¾ view helps us match which vehicle it is and what type of vehicle it is.

If there is a vehicle number that the entity uses – please show or add a photo that shows this identifying number. (See Item 7 below.



2. Vehicle identification number (VIN)

The VIN is important so MPCA can match it with the application information the grantee has provided. Make sure the number is clear and readable.



3. Engine label/Engine serial number

Engine labels and serial numbers are sometimes hard to find or may be covered in grease. Clear and readable numbers are what we are looking for.



4. Chassis rails cut in half*

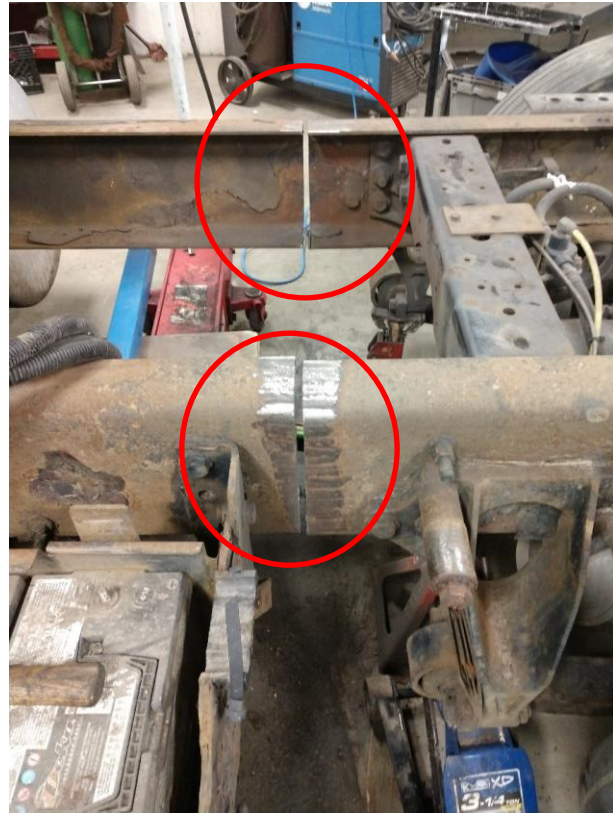
Both of the chassis rails must be cut all the way through between the front wheels and rear axle. That way, no one is tempted to resurrect the old chassis and add an old polluting engine to it.

Owners can cut the frame and engine or have a scrapyard do it.

Owners may keep doors and mirrors and other non-engine parts, and or keep any money the scrapyard may give for the old vehicle.

*For DERA off-road projects only:

- Please provide receipt for any parts sold from equipment destroyed. This income does not affect the grant award amount.
- Chassis destruction photo not applicable for engine only replacements.



5. Engine block prior to hole

It is important to take a photo of the area of the engine block *before* the 3" diameter hole will be cut – to help validate the photo with the actual engine block hole.

Some owners even mark the engine block with chalk – showing where they intend to cut the hole.



6. Engine block, after hole

Cut a 3" diameter hole in the engine block. (There are several methods.) This assures the engine will never be used again.

Take a photo with a business card or tape measure to show size of the hole. (Business cards are usually 2 1/2" x 3 1/2")



7. Additional photo preferred.

In this section, please include pictures that display any internal serial numbers or vehicle ID numbers that you use to track vehicles.

