

LCCMR Groundwater Contamination Mapping Project

November 2018 Progress Report

Data Harvest – 2017-2019

- Phase 1 – Active Superfund sites. Load well information into EQulS.
- Phase 2 – Active Superfund sites. Load groundwater sampling results into EQulS.
- Phase 3 – Select other program groundwater sites. Load well locations and sampling results.

Mapping Contamination - 2019

- Map areas of groundwater contamination.
- Peer review.

Publishing - 2020

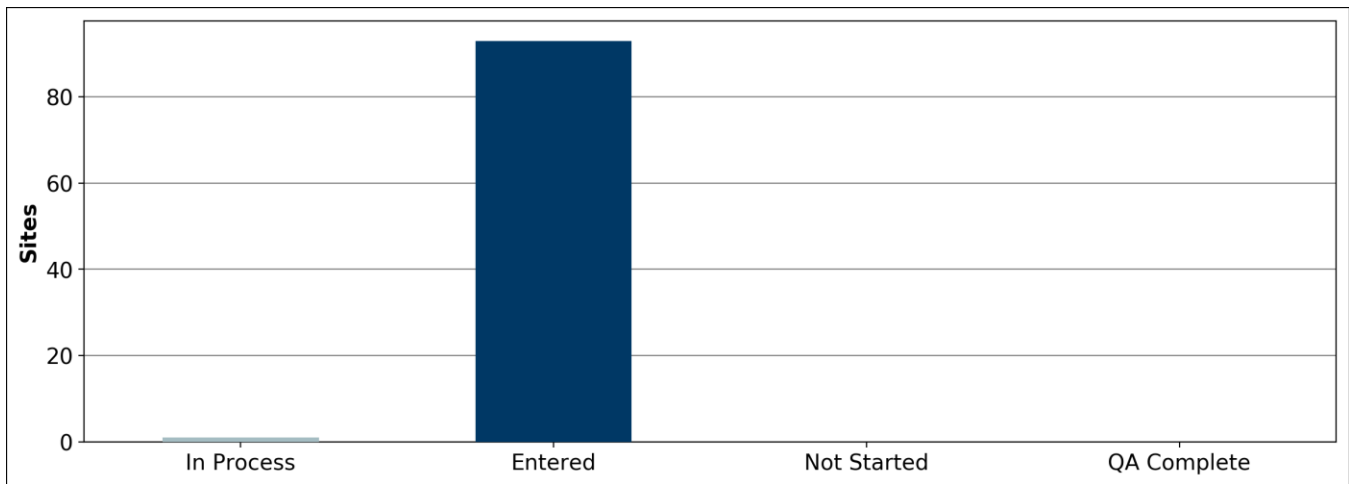
- Interactive web-based map and supporting data published.

Project in: **Phase 2 Data Harvest**

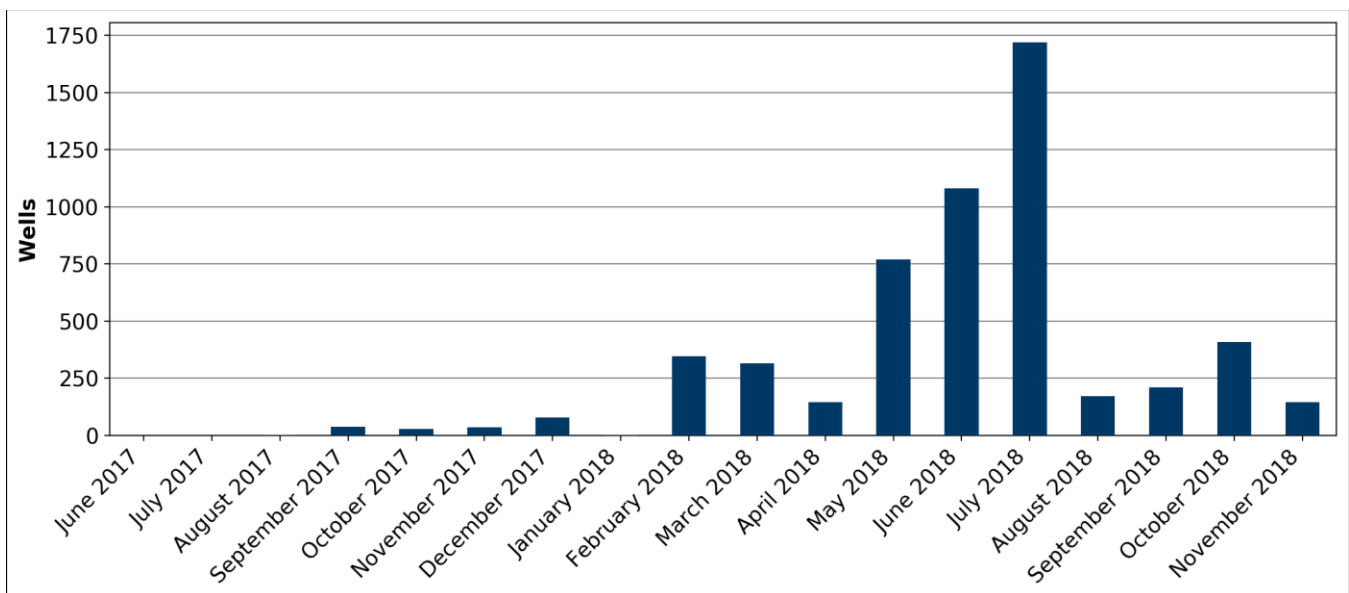
Phase 1 Data Harvest - 99% complete
 Phase 2 Data Harvest - 3% complete

Total Number of Wells in EQulS
 9681 permanent wells
 2229 temporary wells

Well Location Entry Status of Active Superfund Sites



Number of Wells Worked on in EQulS



Facility Code	Facility Name	Location Status	Permanent Wells	Temporary Wells	Total Wells
SR0000001	Joslyn Mfg. & Supply Co.OU1	Entered	71	13	84
SR0000003	General Mills	Entered	143	91	234
SR0000004	Boise Cascade/Onan/Medtronics	Entered	25	7	32
SR0000008	St. Regis Paper OU 1	Entered	116	0	116
SR0000016	Burlington Northern Tie Plant	Entered	40	0	40
SR0000017	Burlington Northern Car Shops (Brainerd)	Entered	20	16	36
SR0000018	Honeywell Inc. - Golden Valley Plant	Entered	223	17	240
SR0000025	Tonka Main Plant	Entered	43	0	43
SR0000029	FMC	Entered	94	87	181
SR0000033	3M Chemolite / Cottage Grove	Entered	40	0	40
SR0000034	Bell Lumber & Pole Co	Entered	24	0	24
SR0000035	Waite Park Wells	Entered	15	0	15
SR0000039	Ritari Post & Pole	Entered	41	0	41
SR0000040	Long Prairie Groundwater Contamination	Entered	53	0	53
SR0000044	Valentine Clark Corp	Entered	32	3	35
SR0000055	Oakdale Dump Sites	Entered	111	0	111
SR0000056	Perham Arsenic	Entered	37	41	78
SR0000058	Boise Cascade Paint Waste Dump	Entered	10	38	48
SR0000060	Reilly Tar & Chemical Saint Louis Park	Entered	312	10	322
SR0000063	Isanti Schumacher	Entered	16	0	16
SR0000067	Arrowhead Refinery Co.	Entered	56	1	57
SR0000072	NIROP OU1	Entered	181	277	458
SR0000073	Twin Cities AFRB	Entered	13	0	13
SR0000084	Baytown Twp Groundwater Cont	Entered	760	11	771
SR0000087	Cedar Services	In Process	0	0	0
SR0000093	Duluth City Dump Former	Entered	36	0	36
SR0000095	Duluth Air Force Base OU1	Entered	424	162	586
SR0000098	Freeway Sanitary Landfill	Entered	48	1	49
SR0000099	Old Freeway Dump	Entered	25	0	25
SR0000107	Pollution Controls Inc. (aka PCI) (SF)	Entered	23	23	46
SR0000112	Brooklyn Park Dump (SF)	Entered	50	0	50
SR0000117	Pigs Eye Landfill	Entered	57	0	57
SR0000122	Highway 96 Dump	Entered	202	0	202
SR0000131	Superior Plating Inc (SF)	Entered	16	56	72
SR0000136	Electric Machinery	Entered	53	0	53
SR0000145	Lakeland Ground Water Contamination	Entered	224	0	224
SR0000149	St. Louis/Interlake/Duluth/Tar Site - OU Sed (Sedi	Entered	73	20	93
SR0000175	Schloff Chemical	Entered	57	9	66
SR0000176	Mankato Plating Co	Entered	28	0	28
SR0000177	MIBCO Site	Entered	69	0	69
SR0000179	West Duluth Industrial Site	Entered	15	16	31
SR0000181	Winona GW Contamination	Entered	63	0	63
SR0000192	Pine Street Dump (SF)	Entered	52	20	72
SR0000198	St Paul Levee Property	Entered	0	0	0
SR0000199	Littlefork GW Contamination Site	Entered	64	0	64
SR0000200	MacGillis and Gibbs Waste Site	Entered	136	37	173
SR0000205	Former Finland Air Force Station	Entered	71	1	72
SR0000206	Pilgrim Cleaners	Entered	9	0	9
SR0000249	Precision Plating, Inc. (SF)	Entered	24	75	99
SR0000264	D's Fabric Care (SF)	Entered	12	18	30
SR0000276	St. Louis River/US Steel Site Wide	Entered	63	78	141

SR0000278	Ashland Oil - Park Penta	Entered	31	0	31
SR0000279	Minnegasco OU2 Ground Water	Entered	85	0	85
SR0000313	TCAAP General	Entered	603	0	603
SR0000329	Farmington Ground Water Plume	Entered	42	0	42
SR0000348	CMC Heartland Lite Yard	Entered	18	0	18
SR0000349	Kettle River Company - Creosote	Entered	43	0	43
SR0000350	Peter Pan	Entered	2	81	83
SR0000351	Reserve Mining Silver Bay Scrapyard & DRO Plume	Entered	25	28	53
SR0000357	SW Fridley Area Wide Groundwater Survey	Entered	398	544	942
SR0000358	Edina Well Field Site	Entered	136	30	166
SR0000359	Rochester Groundwater Plume	Entered	35	0	35
SR0000360	Minnesota Valley Landfill	Entered	5	34	39
SR0000361	Hibbing Gas Manufacturing Plant Site	Entered	13	53	66
SR0000369	Esko Groundwater Contamination Site	Entered	59	94	153
SR0000372	Capri Beauty Salon	Entered	7	73	80
SR0000373	Hmong Shopping Center/Pilgrim Cleaners	Entered	7	0	7
SR0000375	Southview Boulevard	Entered	130	5	135
SR0000376	Fish Hatchery Dump	Entered	16	35	51
SR0000377	St. Louis Park Solvent Plume	Entered	113	130	243
SR0000378	Brainerd Foundry (SR)	Entered	3	0	3
SR0000379	Centerville Road Dump	Entered	29	1	30
SR0000381	Bulinski Point - Wittrup	Entered	6	0	6
SR0000382	Rice County Dump	Entered	19	0	19
SR0001009	Chemical Marketing Corp Of America	Entered	4	0	4
SR0001051	Cedar Serv Inc	Entered	36	0	36
SR0001273	Poplar Hill Solvent Site	Entered	5	13	18
SR0001281	Main Street Solvent Plume	Entered	5	0	5
SR0001293	White Way Cleaners	Entered	22	4	26
SR0001339	Exclusive Cleaners Worthington	Entered	11	18	29
SR0001349	Spring Park Municipal Wells	Entered	37	65	102
SR0001351	Ace Signs, Inc (SF)	Entered	0	0	0
SR0001353	Clothing Care Cleaners (SF)	Entered	14	0	14
SR0001354	Page & Hill (SF)	Entered	17	0	17
SR0001398	Universal Plating	Entered	0	0	0
SR0001400	66th St & Vincent Ave	Entered	25	25	50
SR0001401	Southeast Hennepin Area Groundwater & Vapor Site	Entered	21	50	71
SR0001402	Lyndale Ave Corridor	Entered	87	10	97
SR0001403	Arcade & Hawthorne Ave E	Entered	3	10	13
SR0001404	55th St & Lyndale Ave S	Entered	0	0	0
SR0001405	University Ave & Pascal St	Entered	24	67	91
SR0001406	Hospital Linen	Entered	0	0	0
SR0001412	Former Pure Oil Company	Entered	6	5	11
SR0001503	West Broadway Ground Water Contamination	Entered	31	8	39
Total			6543	2511	9054

LCCMR Groundwater Contamination Mapping Project

November 2018 Progress Report

Data Harvest – 2017-2019

- Phase 1 – Active Superfund sites. Load well information into EQulS.
- Phase 2 – Active Superfund sites. Load groundwater sampling results into EQulS.
- Phase 3 – Select other program groundwater sites. Load well locations and sampling results.

Mapping Contamination - 2019

- Map areas of groundwater contamination.
- Peer review.

Publishing - 2020

- Interactive web-based map and supporting data published.

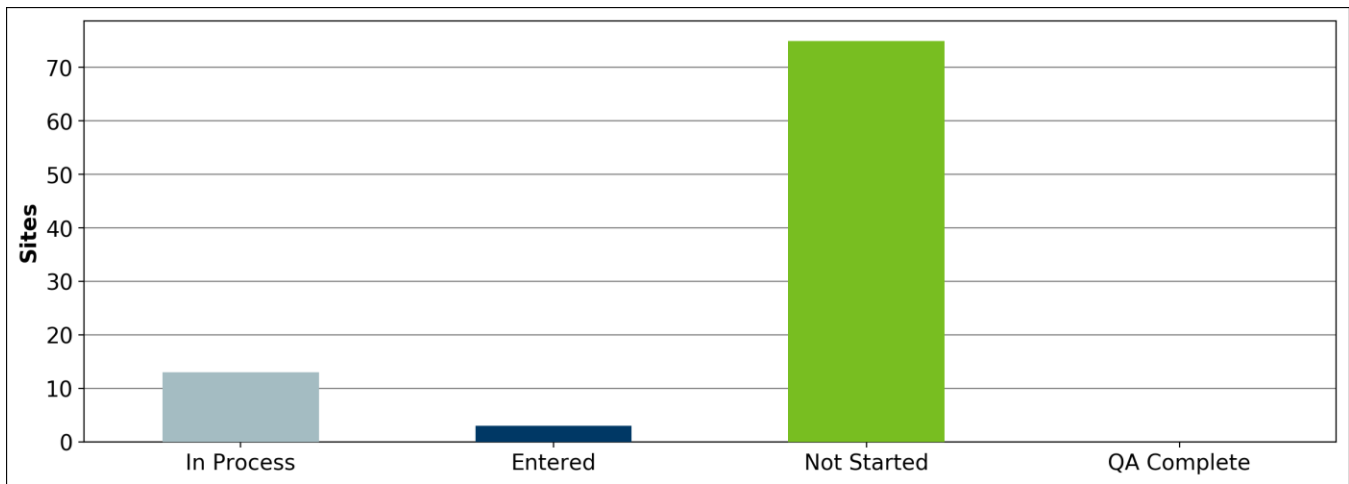
Project in: **Phase 2 Data Harvest**

Phase 1 Data Harvest - 99% complete
Phase 2 Data Harvest - 3% complete

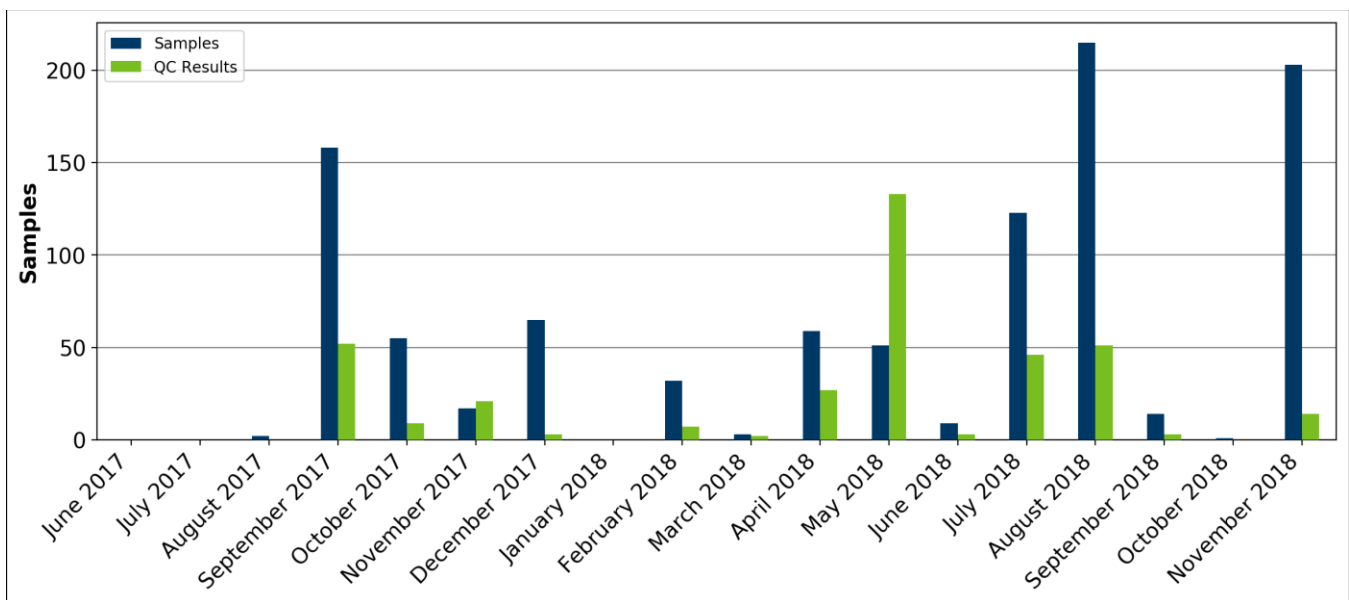
Total Number of Samples in EQulS

5485 samples
1179 QC samples

Sample Entry Status of Active Superfund Sites



Number of Samples Loaded in EQulS



Facility Code	Facility Name	Status	Sample Count	QC Count	Percent of Locations with Samples
SR000001	Joslyn Mfg. & Supply Co.OU1	Not Started	0	0	0%
SR000003	General Mills	Not Started	0	0	0%
SR000004	Boise Cascade/Onan/Medtronics	Not Started	0	0	0%
SR000008	St. Regis Paper OU 1	Not Started	0	0	0%
SR000016	Burlington Northern Tie Plant	Not Started	0	0	0%
SR000017	Burlington Northern Car Shops (Brainerd)	Not Started	0	0	0%
SR000018	Honeywell Inc. - Golden Valley Plant	Not Started	0	0	0%
SR000025	Tonka Main Plant	Not Started	0	0	0%
SR000029	FMC	In Process	0	0	0%
SR000033	3M Chemolite / Cottage Grove	In Process	55	102	100%
SR000034	Bell Lumber & Pole Co	Not Started	0	0	0%
SR000035	Waite Park Wells	Not Started	0	0	0%
SR000039	Ritari Post & Pole	Not Started	0	0	0%
SR000040	Long Prairie Groundwater Contamination	Not Started	0	0	0%
SR000044	Valentine Clark Corp	Not Started	0	0	0%
SR000055	Oakdale Dump Sites	In Process	0	0	0%
SR000056	Perham Arsenic	In Process	104	24	70%
SR000058	Boise Cascade Paint Waste Dump	Not Started	0	0	0%
SR000060	Reilly Tar & Chemical Saint Louis Park	In Process	3002	478	35%
SR000063	Isanti Schumacher	Not Started	0	0	0%
SR000067	Arrowhead Refinery Co.	Not Started	0	0	0%
SR000072	NIROP OU1	Not Started	0	0	0%
SR000073	Twin Cities AFRB	Not Started	0	0	0%
SR000084	Baytown Twp Groundwater Cont	Entered	1214	32	55%
SR000087	Cedar Services	Not Started	0	0	0%
SR000093	Duluth City Dump Former	Not Started	0	0	0%
SR000095	Duluth Air Force Base OU1	In Process	61	73	9%
SR000098	Freeway Sanitary Landfill	Not Started	0	0	0%
SR000099	Old Freeway Dump	Not Started	0	0	0%
SR000107	Pollution Controls Inc. (aka PCI) (SF)	Not Started	0	0	0%
SR000112	Brooklyn Park Dump (SF)	Not Started	0	0	0%
SR000117	Pigs Eye Landfill	In Process	177	282	82%
SR000122	Highway 96 Dump	Not Started	0	0	0%
SR000131	Superior Plating Inc (SF)	Not Started	37	41	81%
SR000136	Electric Machinery	Not Started	0	0	0%
SR000145	Lakeland Ground Water Contamination	In Process	4	0	1%
SR000149	St. Louis/Interlake/Duluth/Tar Site - OU Sed (Sedi	Not Started	0	0	0%
SR000175	Schloff Chemical	Not Started	0	0	0%
SR000176	Mankato Plating Co	Not Started	0	0	0%
SR000177	MIBCO Site	Not Started	0	0	0%
SR000179	West Duluth Industrial Site	Not Started	0	0	0%
SR000181	Winona GW Contamination	Not Started	0	0	0%
SR000192	Pine Street Dump (SF)	Not Started	0	0	0%
SR000198	St Paul Levee Property	Not Started	0	0	0%
SR000199	Littlefork GW Contamination Site	Not Started	0	0	0%
SR000200	MacGillis and Gibbs Waste Site	Not Started	0	0	0%
SR000205	Former Finland Air Force Station	Not Started	0	0	0%

SR0000206	Pilgrim Cleaners	Not Started	1	0	11%
SR0000249	Precision Plating, Inc. (SF)	Not Started	0	0	0%
SR0000264	D's Fabric Care (SF)	Not Started	0	0	0%
SR0000276	St. Louis River/US Steel Site Wide	In Process	4	0	4%
SR0000278	Ashland Oil - Park Penta	Not Started	0	0	0%
SR0000279	Minnegasco OU2 Ground Water	Not Started	0	0	0%
SR0000313	TCAAP General		0	0	0%
SR0000329	Farmington Ground Water Plume	In Process	18	3	19%
SR0000348	CMC Heartland Lite Yard	Not Started	0	0	0%
SR0000349	Kettle River Company - Creosote	Entered	145	0	76%
SR0000350	Peter Pan	Not Started	0	0	0%
SR0000351	Reserve Mining Silver Bay Scrapyard & DRO Plume	Not Started	19	3	44%
SR0000357	SW Fridley Area Wide Groundwater Survey	Not Started	0	0	0%
SR0000358	Edina Well Field Site	Not Started	0	0	0%
SR0000359	Rochester Groundwater Plume	Not Started	95	17	71%
SR0000360	Minnesota Valley Landfill	Not Started	0	0	0%
SR0000361	Hibbing Gas Manufacturing Plant Site	Not Started	0	0	0%
SR0000369	Esko Groundwater Contamination Site	Not Started	14	1	11%
SR0000372	Capri Beauty Salon	Not Started	0	0	0%
SR0000373	Hmong Shopping Center/Pilgrim Cleaners	In Process	7	3	71%
SR0000375	Southview Boulevard	Not Started	0	0	0%
SR0000376	Fish Hatchery Dump	In Process	9	6	37%
SR0000377	St. Louis Park Solvent Plume	Entered	491	112	72%
SR0000378	Brainerd Foundry (SR)	Not Started	0	0	0%
SR0000379	Centerville Road Dump	In Process	10	0	20%
SR0000381	Bulinski Point - Wittrup	Not Started	0	0	0%
SR0000382	Rice County Dump	Not Started	11	1	31%
SR0001009	Chemical Marketing Corp Of America	Not Started	0	0	0%
SR0001051	Cedar Serv Inc	Not Started	0	0	0%
SR0001273	Poplar Hill Solvent Site	Not Started	0	0	0%
SR0001281	Main Street Solvent Plume	Not Started	0	0	0%
SR0001293	White Way Cleaners	Not Started	0	0	0%
SR0001339	Exclusive Cleaners Worthington	Not Started	0	0	0%
SR0001349	Spring Park Municipal Wells	Not Started	3	0	8%
SR0001351	Ace Signs, Inc (SF)	Not Started	0	0	0%
SR0001353	Clothing Care Cleaners (SF)	Not Started	0	0	0%
SR0001354	Page & Hill (SF)	Not Started	0	0	0%
SR0001398	Universal Plating	Not Started	4	1	57%
SR0001400	66th St & Vincent Ave	Not Started	0	0	0%
SR0001401	Southeast Hennepin Area Groundwater & Vapor Site	Not Started	0	0	0%
SR0001402	Lyndale Ave Corridor	Not Started	0	0	0%
SR0001403	Arcade & Hawthorne Ave E	Not Started	0	0	0%
SR0001404	55th St & Lyndale Ave S	Not Started	0	0	0%
SR0001405	University Ave & Pascal St	Not Started	0	0	0%
SR0001406	Hospital Linen	Not Started	0	0	0%
SR0001412	Former Pure Oil Company	Not Started	0	0	0%
SR0001503	West Broadway Ground Water Contamination	Not Started	0	0	0%

Total	5485	1179	20%
--------------	------	------	-----