

State Disposal System
MN0069795

Permittee: Metropolitan Council
Facility name: MCES – East Bethel Water Reclamation Facility
City: East Bethel **County:** Anoka
Issuance date: TBD
Expiration date: TBD

The state of Minnesota, on behalf of its citizens through the Minnesota Pollution Control Agency (MPCA), authorizes the Permittee to operate a disposal system at the facility named above in accordance with the requirements of this permit.

The goal of this permit is to reduce pollutant levels in point source discharges and protect water quality in accordance with the U.S. Clean Water Act, Minnesota statutes and rules, and federal laws and regulations.

This permit expires at midnight on the expiration date identified above.

Signature:

This document has been electronically signed.

for the Minnesota Pollution Control Agency

Bill D. Priebe, P.E.
Supervisor, Metro Regional and Infrastructure Financing Unit
Municipal Wastewater Section
Municipal Division

Submit eDMRs

Submit via the MPCA e-Services at
https://rsp.pca.state.mn.us/TEMPO_RSP/Orchestrate.do?initiate=true

Questions on this permit?

For eDMR and other permit reporting issues, contact:
Tami Dahl, 507-476-4252

Submit other WQ reports to:

Attention: WQ Submittals Center
Minnesota Pollution Control Agency
520 Lafayette Road North
St. Paul, MN 55155-4194

For specific permit requirements, please refer to:
Kaitlin Jamieson, 651-757-2306

Wastewater Permit Program general questions, contact:
MPCA, 651-282-6143 or 1-800-657-3938.

Table of Contents

	Page
1. Permitted facility description.....	3
2. Location map of permitted facility.....	4
3. Flow diagram.....	5
4. Summary of stations and station locations.....	6
5. Permit requirements.....	7
6. Submittal action summary.....	28
7. Limits and monitoring.....	31

DRAFT

1. Permitted facility description

The MCES - East Bethel Water Reclamation facility (facility) is located at 18460 Buchanan Street Northeast, East Bethel, Minnesota 55011, Anoka County.

The facility is a water reclamation plant that provides tertiary treatment and disinfection of wastewater, followed by distribution of treated effluent to separate subsurface infiltration sites (Site A and Site E). The facility is designed to treat an average wet weather flow of 470,000 gallons per day. Each infiltration site is designed to receive up to 410,000 gallons per day on an annual average basis. This is a Class B facility.

The facility includes influent pumping, fine screening and grit removal, one set of biological treatment tanks with a five-stage biological nutrient removal system, two membrane biological reactor units for tertiary treatment, chemical addition capability, ultraviolet disinfection, back-up chlorination, and pumping and conveyance facilities. Residual biosolids from the plant are periodically removed and delivered to another MCES plant for further treatment and disposal. The facility has back-up equipment and procedures to ensure reliability of the treatment process.

The facility's two infiltration sites (Sites A and E) consist of multi-celled grass-covered earthen basins and the associated distribution system consisting of underground 16-inch and 10-inch pipe that carries water year round to both sites for distribution of the treated effluent. Each site is designed to confine multiple cells in shallow, soil-covered basins with granular material at the bottom to facilitate delivery of the treated effluent through the unsaturated zone. Both Sites A and E have a piezometer (GW009 and GW010, respectively) in the middle of each site to measure elevations, and to serve as observation ports for the piping. The sites also have a network of eight monitoring wells (GW001 - GW008) to determine if there are changes in ground water quality or elevations. The treated effluent is delivered to Sites A and E to optimize cell performance based on the operational requirements to control the mound height and maintain an unsaturated zone above the water table.

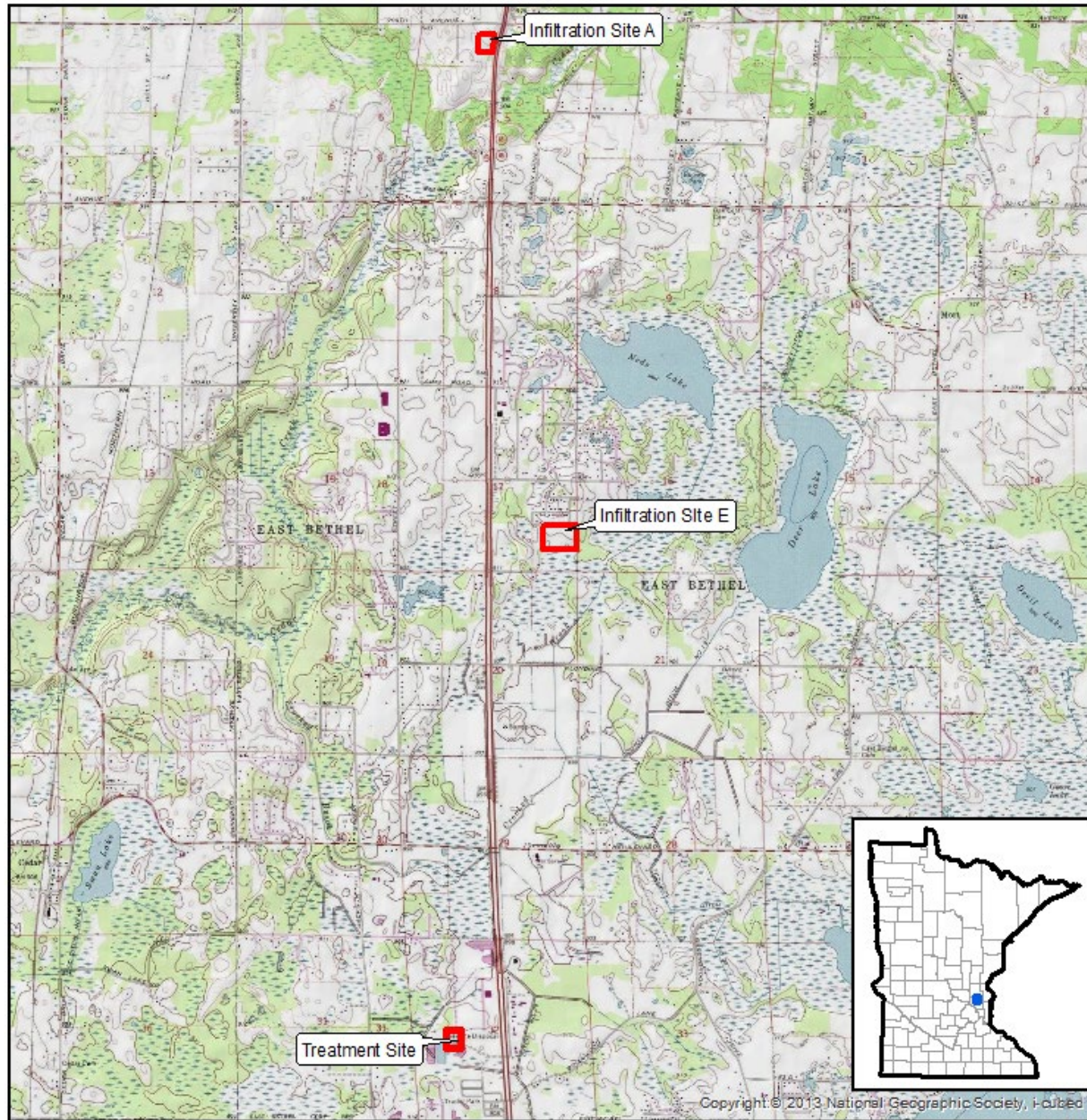
Some of the facility's treated effluent may be used for reuse activities. Effluent that meets the limits and monitoring requirements outlined in Waste Stream Stations WS005 and WS006 may be reused for the corresponding activities described for Disinfected Tertiary 2.2 Effluent and Disinfected Secondary 23 Effluent in the Municipal Wastewater Reuse factsheet found on the MPCA website (www.pca.state.mn.us). If the facility proposes reuse for an activity not listed in the fact sheet, a request must be made to the MPCA describing the activity. Future reuse activities that include the construction of permanent piping systems to distribute the treated effluent to users may require a major permit modification. However, at this time the Permittee is only conveying effluent to the two subsurface disposal sites. The Permittee is not authorized under this permit to construct any additional permanent piping systems to distribute effluent for reuse. Any proposals shall be submitted to the MPCA for review and approval prior to construction.

The facility is currently being operated in batch mode due to low initial flows, necessitating changes to operations, sampling and monitoring provisions of the permit. Requirements for batch mode are outlined in the special requirements section of this permit.

2. Location map of permitted facility

Topographic Map of Permitted Facility

MN0069795: Met Council - East Bethel Reuse Plant
T33N, R23W, Section 32
East Bethel, Anoka County, Minnesota

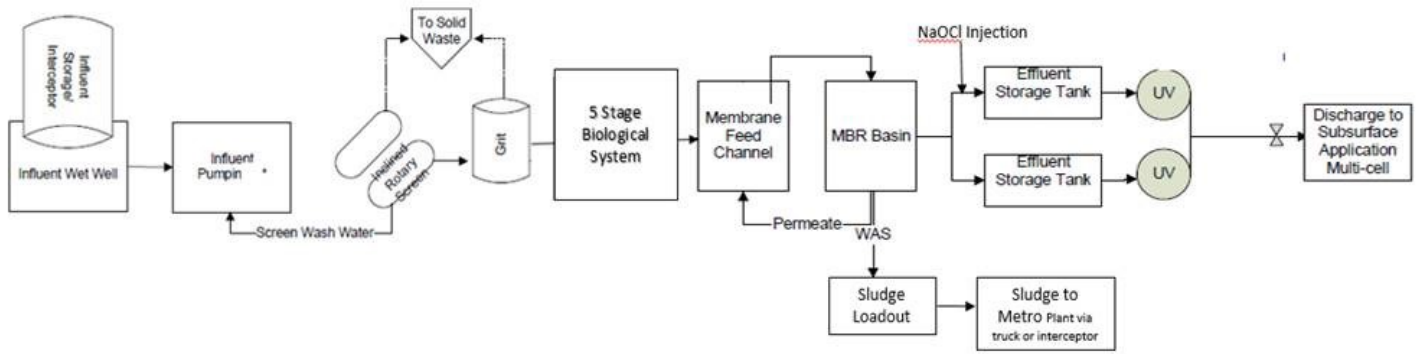


Map produced by: MPCA Staff, 1/9/2017
Main Map Scale: 1:50,000

0 0.5 1 2Miles



3. Flow diagram



DRAFT

4. Summary of stations and station locations

Station	Type of station	Local name	PLS location
GW 001	Well, Upgradient	MW - A1 (NE Corner - Subsurface Site A)	T33N, R23W, S05, NE Quarter of the NW Quarter
GW 002	Well, Downgradient	MW - A2 (SW Corner - Subsurface Site A)	T33N, R23W, S05, NE Quarter of the NW Quarter
GW 003	Well, Upgradient	MW - A3 (NW Corner - Subsurface Site A)	T33N, R23W, S05, NE Quarter of the NW Quarter
GW 004	Well, Downgradient	MW - A4 (SE Corner - Subsurface Site A)	T33N, R23W, S05, NE Quarter of the NW Quarter
GW 005	Well, Other	MW - E1 (NE Corner - Subsurface Site E)	T33N, R23W, S17, SE Quarter of the SE Quarter
GW 006	Well, Other	MW - E2 (SW Corner - Subsurface Site E)	T33N, R23W, S17, SE Quarter of the SE Quarter
GW 007	Well, Upgradient	MW - E3 (North Side - Subsurface Site E)	T33N, R23W, S17, SE Quarter of the SE Quarter
GW 008	Well, Downgradient	MW - E4 (South Side - Subsurface Site E)	T33N, R23W, S17, SE Quarter of the SE Quarter
GW 009	Piezometer, Other	Subsurface Site A	T33N, R23W, S05, NE Quarter of the NW Quarter
GW 010	Piezometer, Other	Subsurface Site E	T33N, R23W, S17, SE Quarter of the SE Quarter
WS 001	Influent Waste	Influent to Mechanical Facility	T33N, R23W, S32, NW Quarter of the SW Quarter
WS 002	Intermediate: WW to Land	Effluent to Subsurface Sites	T33N, R23W, S32
WS 003	Internal Waste Stream	Disposal to Subsurface Site A	T33N, R23W, S05
WS 004	Internal Waste Stream	Disposal to Subsurface Site E	T33N, R23W, S17
WS 005	Intermediate: WW to Land	Reuse Effluent, Disinfected Tertiary 2.2	T33N, R23W, S32
WS 006	Intermediate: WW to Land	Reuse Effluent, Disinfected Secondary 23	T33N, R23W, S32

5. Permit requirements

GW 001	Well, Upgradient	
		Facility Specific Limit and Monitoring Requirements
	5.1.1	The Permittee shall submit a monthly DMR: Due by 21 days after the end of each calendar month following permit issuance. [Minn. R. 7001.0150, Subp. 2(B)]
	5.1.2	Sampling Location. [Minn. R. 7001.0150, Subp. 2(B)]
	5.1.3	The Permittee shall submit monitoring results in accordance with the limits and monitoring requirements for this station. If conditions are such that no sample can be acquired, the Permittee shall report "No Flow" or "No Discharge" on Discharge Monitoring Report (DMR) and shall add a Comments attachment to the DMR detailing why the sample was not collected. [Minn. R. 7001.0150, Subp. 2(B)]
GW 002	Well, Downgradient	
		Facility Specific Limit and Monitoring Requirements
	5.2.1	The Permittee shall submit a monthly DMR: Due by 21 days after the end of each calendar month following permit issuance. [Minn. R. 7001.0150, Subp. 2(B)]
	5.2.2	Sampling Location. [Minn. R. 7001.0150, Subp. 2(B)]
	5.2.3	The Permittee shall submit monitoring results in accordance with the limits and monitoring requirements for this station. If conditions are such that no sample can be acquired, the Permittee shall report "No Flow" or "No Discharge" on Discharge Monitoring Report (DMR) and shall add a Comments attachment to the DMR detailing why the sample was not collected. [Minn. R. 7001.0150, Subp. 2(B)]
GW 003	Well, Upgradient	
		Facility Specific Limit and Monitoring Requirements
	5.3.1	The Permittee shall submit a monthly DMR: Due by 21 days after the end of each calendar month following permit issuance. [Minn. R. 7001.0150, Subp. 2(B)]
	5.3.2	Sampling Location. [Minn. R. 7001.0150, Subp. 2(B)]
	5.3.3	The Permittee shall submit monitoring results in accordance with the limits and monitoring requirements for this station. If conditions are such that no sample can be acquired, the Permittee shall report "No Flow" or "No Discharge" on Discharge Monitoring Report (DMR) and shall add a Comments attachment to the DMR detailing why the sample was not collected. [Minn. R. 7001.0150, Subp. 2(B)]
GW 004	Well, Downgradient	
		Facility Specific Limit and Monitoring Requirements
	5.4.1	The Permittee shall submit a monthly DMR: Due by 21 days after the end of each calendar month following permit issuance. [Minn. R. 7001.0150, Subp. 2(B)]
	5.4.2	Sampling Location. [Minn. R. 7001.0150, Subp. 2(B)]
	5.4.3	The Permittee shall submit monitoring results in accordance with the limits and monitoring requirements for this station. If conditions are such that no sample can be acquired, the Permittee shall report "No Flow" or "No Discharge" on Discharge Monitoring Report (DMR) and shall add a Comments attachment to the DMR detailing why the sample was not collected. [Minn. R. 7001.0150, Subp. 2(B)]
GW 005	Well, Other	
		Facility Specific Limit and Monitoring Requirements
	5.5.1	The Permittee shall submit a monthly DMR: Due by 21 days after the end of each calendar month following permit issuance. [Minn. R. 7001.0150, Subp. 2(B)]
	5.5.2	Sampling Location. [Minn. R. 7001.0150, Subp. 2(B)]

	5.5.3	The Permittee shall submit monitoring results in accordance with the limits and monitoring requirements for this station. If conditions are such that no sample can be acquired, the Permittee shall report "No Flow" or "No Discharge" on Discharge Monitoring Report (DMR) and shall add a Comments attachment to the DMR detailing why the sample was not collected. [Minn. R. 7001.0150, Subp. 2(B)]
GW 006	Well, Other	
		Facility Specific Limit and Monitoring Requirements
	5.6.1	The Permittee shall submit a monthly DMR: Due by 21 days after the end of each calendar month following permit issuance. [Minn. R. 7001.0150, Subp. 2(B)]
	5.6.2	Sampling Location. [Minn. R. 7001.0150, Subp. 2(B)]
	5.6.3	The Permittee shall submit monitoring results in accordance with the limits and monitoring requirements for this station. If conditions are such that no sample can be acquired, the Permittee shall report "No Flow" or "No Discharge" on Discharge Monitoring Report (DMR) and shall add a Comments attachment to the DMR detailing why the sample was not collected. [Minn. R. 7001.0150, Subp. 2(B)]
GW 007	Well, Upgradient	
		Facility Specific Limit and Monitoring Requirements
	5.7.1	The Permittee shall submit a monthly DMR: Due by 21 days after the end of each calendar month following permit issuance. [Minn. R. 7001.0150, Subp. 2(B)]
	5.7.2	Sampling Location. [Minn. R. 7001.0150, Subp. 2(B)]
	5.7.3	The Permittee shall submit monitoring results in accordance with the limits and monitoring requirements for this station. If conditions are such that no sample can be acquired, the Permittee shall report "No Flow" or "No Discharge" on Discharge Monitoring Report (DMR) and shall add a Comments attachment to the DMR detailing why the sample was not collected. [Minn. R. 7001.0150, Subp. 2(B)]
GW 008	Well, Downgradient	
		Facility Specific Limit and Monitoring Requirements
	5.8.1	The Permittee shall submit a monthly DMR: Due by 21 days after the end of each calendar month following permit issuance. [Minn. R. 7001.0150, Subp. 2(B)]
	5.8.2	Sampling Location. [Minn. R. 7001.0150, Subp. 2(B)]
	5.8.3	The Permittee shall submit monitoring results in accordance with the limits and monitoring requirements for this station. If conditions are such that no sample can be acquired, the Permittee shall report "No Flow" or "No Discharge" on Discharge Monitoring Report (DMR) and shall add a Comments attachment to the DMR detailing why the sample was not collected. [Minn. R. 7001.0150, Subp. 2(B)]
GW 009	Piezometer, Other	
		Facility Specific Limit and Monitoring Requirements
	5.9.1	The Permittee shall submit a monthly DMR: Due by 21 days after the end of each calendar month following permit issuance. [Minn. R. 7001.0150, Subp. 2(B)]
	5.9.2	Sampling Location. [Minn. R. 7001.0150, Subp. 2(B)]
	5.9.3	The Permittee shall submit monitoring results in accordance with the limits and monitoring requirements for this station. If conditions are such that no sample can be acquired, the Permittee shall report "No Flow" or "No Discharge" on Discharge Monitoring Report (DMR) and shall add a Comments attachment to the DMR detailing why the sample was not collected. [Minn. R. 7001.0150, Subp. 2(B)]
GW 010	Piezometer, Other	
		Facility Specific Limit and Monitoring Requirements

	5.10.1	The Permittee shall submit a monthly DMR: Due by 21 days after the end of each calendar month following permit issuance. [Minn. R. 7001.0150, Subp. 2(B)]
	5.10.2	Sampling Location. [Minn. R. 7001.0150, Subp. 2(B)]
	5.10.3	The Permittee shall submit monitoring results in accordance with the limits and monitoring requirements for this station. If conditions are such that no sample can be acquired, the Permittee shall report "No Flow" or "No Discharge" on Discharge Monitoring Report (DMR) and shall add a Comments attachment to the DMR detailing why the sample was not collected. [Minn. R. 7001.0150, Subp. 2(B)]
WS 001	Influent Waste	
		Facility Specific Limit and Monitoring Requirements
	5.11.1	The Permittee shall submit a monthly DMR: Due by 21 days after the end of each calendar month following permit issuance. [Minn. R. 7001.0150, Subp. 2(B)]
	5.11.2	Sampling Location. [Minn. R. 7001.0150, Subp. 2(B)]
	5.11.3	Samples for waste stream station WS 001 shall be taken at a point representative of total influent flow to the system. [Minn. R. 7001.0150, Subp. 2(B)]
	5.11.4	The Permittee shall submit monitoring results in accordance with the limits and monitoring requirements for this station. If conditions are such that no sample can be acquired, the Permittee shall report "No Flow" or "No Discharge" on Discharge Monitoring Report (DMR) and shall add a Comments attachment to the DMR detailing why the sample was not collected. [Minn. R. 7001.0150, Subp. 2(B)]
WS 002	Intermediate: WW to Land	
		Facility Specific Limit and Monitoring Requirements
	5.12.1	The Permittee shall submit a monthly DMR: Due by 21 days after the end of each calendar month following permit issuance. [Minn. R. 7001.0150, Subp. 2(B)]
	5.12.2	Sampling Location. [Minn. R. 7001.0150, Subp. 2(B)]
	5.12.3	Samples for waste stream station WS 002 shall be taken after the treatment components and prior to entering the subsurface sites. [Minn. R. 7001.0150, Subp. 2(B)]
	5.12.4	The Permittee shall submit monitoring results in accordance with the limits and monitoring requirements for this station. If conditions are such that no sample can be acquired, the Permittee shall report "No Flow" or "No Discharge" on Discharge Monitoring Report (DMR) and shall add a Comments attachment to the DMR detailing why the sample was not collected. [Minn. R. 7001.0150, Subp. 2(B)]
WS 003	Internal Waste Stream	
		Facility Specific Limit and Monitoring Requirements
	5.13.1	The Permittee shall submit a monthly DMR: Due by 21 days after the end of each calendar month following permit issuance. [Minn. R. 7001.0150, Subp. 2(B)]
	5.13.2	Sampling Location. [Minn. R. 7001.0150, Subp. 2(B)]
	5.13.3	Samples for waste stream station WS 003 shall be taken prior to distribution to Subsurface Site A. [Minn. R. 7001.0150, Subp. 2(B)]
	5.13.4	The Permittee shall submit monitoring results in accordance with the limits and monitoring requirements for this station. If conditions are such that no sample can be acquired, the Permittee shall report "No Flow" or "No Discharge" on Discharge Monitoring Report (DMR) and shall add a Comments attachment to the DMR detailing why the sample was not collected. [Minn. R. 7001.0150, Subp. 2(B)]
WS 004	Internal Waste Stream	
		Facility Specific Limit and Monitoring Requirements

	5.14.1	The Permittee shall submit a monthly DMR: Due by 21 days after the end of each calendar month following permit issuance. [Minn. R. 7001.0150, Subp. 2(B)]
	5.14.2	Sampling Location. [Minn. R. 7001.0150, Subp. 2(B)]
	5.14.3	Samples for waste stream station WS 004 shall be taken prior to distribution to Subsurface Site E. [Minn. R. 7001.0150, Subp. 2(B)]
	5.14.4	The Permittee shall submit monitoring results in accordance with the limits and monitoring requirements for this station. If conditions are such that no sample can be acquired, the Permittee shall report "No Flow" or "No Discharge" on Discharge Monitoring Report (DMR) and shall add a Comments attachment to the DMR detailing why the sample was not collected. [Minn. R. 7001.0150, Subp. 2(B)]
WS 005	Intermediate: WW to Land	
		Facility Specific Limit and Monitoring Requirements
	5.15.1	The Permittee shall submit a monthly DMR: Due by 21 days after the end of each calendar month following permit issuance. [Minn. R. 7001.0150, Subp. 2(B)]
	5.15.2	Sampling Location. [Minn. R. 7001.0150, Subp. 2(B)]
	5.15.3	Samples for waste stream station WS 005 shall be taken at a point after tertiary 2.2 disinfection and prior to effluent reuse as outlined in the facility description. [Minn. R. 7001.0150, Subp. 2(B)]
	5.15.4	The Permittee shall submit monitoring results in accordance with the limits and monitoring requirements for this station. If conditions are such that no sample can be acquired, the Permittee shall report "No Flow" or "No Discharge" on Discharge Monitoring Report (DMR) and shall add a Comments attachment to the DMR detailing why the sample was not collected. [Minn. R. 7001.0150, Subp. 2(B)]
		Facility Specific Requirements
	5.16.5	As outlined in the limits and monitoring section for waste stream station WS005, the number of total coliform bacteria must not exceed 23 organisms per 100 milliliters in more than one sample in any month. [Minn. R. 7001]
	5.16.6	Turbidity on waste stream station WS 005 is continuously monitored. Compliance with the daily average turbidity limit shall be determined by averaging the turbidity of 6 individual readings taken at 4-hour intervals over a 24-hour period. Sampling is required only during periods when effluent is reused. [Minn. R. 7001]
WS 006	Intermediate: WW to Land	
		Facility Specific Limit and Monitoring Requirements
	5.17.1	The Permittee shall submit a monthly DMR: Due by 21 days after the end of each calendar month following permit issuance. [Minn. R. 7001.0150, Subp. 2(B)]
	5.17.2	Sampling Location. [Minn. R. 7001.0150, Subp. 2(B)]
	5.17.3	Samples for waste stream station WS 006 shall be taken at a point after secondary 23 disinfection and prior to effluent reuse as outlined in the facility description. [Minn. R. 7001.0150, Subp. 2(B)]
	5.17.4	The Permittee shall submit monitoring results in accordance with the limits and monitoring requirements for this station. If conditions are such that no sample can be acquired, the Permittee shall report "No Flow" or "No Discharge" on Discharge Monitoring Report (DMR) and shall add a Comments attachment to the DMR detailing why the sample was not collected. [Minn. R. 7001.0150, Subp. 2(B)]
MN0069795	Met Council - East Bethel Water Reclamation Facility	
		Groundwater Station General Requirements

5.18.1	Analysis Requirements. [Minn. R. 7001]
5.18.2	pH, specific conductance and temperature analyses shall be conducted within 15 minutes of sample collection. [Minn. R. 7053]
5.18.3	Monitoring Wells. [Minn. R. 7001]
5.18.4	The Permittee shall install, maintain and abandon groundwater monitoring wells according to the Minnesota Water Well Construction Code, Minnesota Rules, ch. 4725. Damaged or improperly constructed monitoring wells shall be repaired or properly abandoned and replaced. Information on licensed water well contractors is available from the Minnesota Department of Health. [Minn. R. 4725]
5.18.5	The Permittee shall submit a detailed monitoring well log for each monitoring well at the facility and a detailed US Geological Survey topographical map identifying the location of each well. [Minn. R. 7001]
5.18.6	Each monitoring well shall be clearly numbered on the outside of the well with either indelible paint or an inscribed number. [Minn. R. 7001]
5.18.7	The monitoring wells shall be sampled in accordance with "Minnesota Pollution Control Agency, Water Quality Division: Sampling Procedures for Ground Water Monitoring Wells, July 1997, Reviewed and re-approved September 2006" or any updates to this document. A copy of this publication is available on the MPCA website at: http://www.pca.state.mn.us . [Minn. R. 7001]
5.18.8	Grab samples shall be collected at all ground water monitoring points after stabilization tests are conducted. [Minn. R. 7001]
5.18.9	Prior to well purging and sampling, depths to groundwater shall be measured to the nearest 0.01 foot below the top of the well casing, and groundwater elevations shall be reported to the nearest 0.01 foot above mean sea level. [Minn. R. 7001]
5.18.10	Temperature, specific conductance and pH shall be reported as the final field measurements from well stabilization. [Minn. R. 7001]
	Waste Stream Station General Requirements
5.19.11	Analysis Requirements. [Minn. R. 7001]
5.19.12	pH, specific conductance and temperature analyses shall be conducted within 15 minutes of sample collection. [Minn. R. 7053]
5.19.13	Representative Samples. [Minn. R. 7001]
5.19.14	Grab and composite samples shall be collected at a point representative of total influent flow to the system. [Minn. R. 7001]
5.19.15	Nitrogen Limits and Monitoring Requirements. [Minn. R. 7001]
5.19.16	"Total Nitrogen" is to be reported as the summation of the Total Kjeldahl Nitrogen and Total Nitrite plus Nitrate Nitrogen values. [Minn. R. 7001]
	Special Requirements
5.20.17	Batch Operations. [Minn. R. 7001]
5.20.18	At permit issuance the facility is not operating in continuous mode. Influent and effluent are pumped in a batch mode as flow levels allow. [Minn. R. 7001]
5.20.19	While the facility is operating in batch mode the Permittee shall collect 24-hour time composite samples for parameters listed with "24-hour flow composite" sample type in the limits and monitoring section of this permit. [Minn. R. 7001]
5.20.20	Once flow levels reach 0.13 million gallons per day (mgd) the facility will operate in continuous mode and collect 24-hour flow composite samples as identified in the limits and monitoring section of this permit. The Permittee shall notify the MPCA, in writing within 5 days, when the Calendar Month Average flow levels reach 0.13 mgd and operations are switched to continuous mode. [Minn. R. 7001]
5.20.21	Wastewater Reuse. [Minn. R. 7001]
5.20.22	Wastewater Reuse Definitions. [Minn. R. 7001]
5.20.23	"Disinfected Tertiary 2.2 Effluent" means that the wastewater has been treated by a secondary treatment process and has been filter and disinfected to ensure compliance with a total coliform

		limit of 2.2 MPN per 100 ml sample. [Minn. R. 7001]
5.20.24		"Disinfected Secondary 23 Effluent" means that the wastewater has been treated by a secondary treatment process and has been disinfected to ensure compliance with a total coliform limit of 23 MPN per 100 mL sample. [Minn. R. 7001]
5.20.25		"Maximum 7-Sample Moving Median" shall be calculated by listing the current sample value and the previous 6 sample values in order from the lowest value to the highest value and recording the middle value (median). It may be necessary to include sample values from the previous monitoring period(s) in order to obtain 7 sample values for the calculation. On the eDMR, report the highest 7-sample median calculated during that monitoring period. [Minn. R. 7001]
5.20.26		"Effluent Reuse", "Wastewater Reuse", "Recycled Wastewater", or "Reclaimed Wastewater", is the use of municipal wastewater effluent that, as a result of treatment, is suitable for a direct beneficial use or a controlled use that would normally use another source of water such as potable water, surface water, or groundwater. These terms have the same meaning and may be used interchangeably. [Minn. R. 7001]
5.20.27		Effluent Reuse - General Requirements. [Minn. R. 7001]
5.20.28		<p>Authorization</p> <p>This permit authorizes the Permittee to reuse, recycle, or reclaim (herein after "reuse") domestic wastewater effluent in accordance with the provisions of this section.</p> <p>a. Wastewater effluent meeting the requirements for Disinfected Tertiary 2.2 Effluent may be used for all types of reuse as described in the MPCA factsheet titled <i>Municipal Wastewater Reuse</i> (wq-wwr1-01, March 2010, and all subsequent revisions), found on the MPCA website http://www.pca.state.mn.us/.</p> <p>b. Wastewater effluent meeting the requirements for Disinfected Secondary 23 Effluent may be used for only the types of reuse listed for Disinfected Secondary 23 Effluent and Secondary 200 Effluent in the MPCA factsheet titled <i>Municipal Wastewater Reuse</i> (wq-wwr1-01, March 2010, and all subsequent revisions), found on the MPCA website http://www.pca.state.mn.us/. [Minn. R. 7001]</p>
5.20.29		Future reuse activities that include the construction of permanent piping systems to distribute the treated effluent to users will require a modification to this permit. The Permittee is not authorized under this permit to construct any additional permanent piping systems to distribute effluent for reuse. Any proposals for reuse activities that require the construction of a permanent piping distribution system shall be submitted to the MPCA for review and approval prior to construction. [Minn. R. 7001]
5.20.30		<p>Exception</p> <p>The requirements set forth in this chapter shall not apply for use of recycled wastewater onsite at the wastewater recycling plant provided that public access to the area of onsite recycled wastewater use is restricted. [Minn. R. 7001]</p>
5.20.31		<p>Any use of recycled wastewater shall comply with the following:</p> <ol style="list-style-type: none"> 1) Any irrigation runoff shall be confined to the recycled wastewater use area, unless the runoff does not pose a public health threat and is authorized by the regulatory agency. 2) Spray, mist, or runoff shall not enter dwellings, designated outdoor eating areas, or food handling facilities. 3) Drinking water fountains shall be protected against contact with recycled wastewater spray, mist, or runoff. [Minn. R. 7001]
5.20.32		The Permittee shall prevent the surface runoff of reused effluent from reuse sites(s), including precipitation runoff mixed with reused effluent. The Permittee shall provide runoff collection and re-application systems as appropriate to prevent the discharge of surface runoff. [Minn. R. 7001]
5.20.33		If odor or aerosol drift resulting from operation of the reused effluent disposal system creates a

	nuisance condition, the Permittee shall immediately take appropriate action to control or abate the odor or aerosol drift. The Permittee shall notify the Agency of a nuisance condition and corrective action within five (5) days of discovery. [Minn. R. 7001]
5.20.34	The Permittee must have a Contingency Plan on-site which will assure that no untreated or inadequately treated reused effluent will be delivered to the use area. There shall be no bypassing of untreated or partially treated effluent from the reclamation facility to the point of use. Any such discharge must be reported immediately to the Agency. [Minn. R. 7001]
5.20.35	Effluent Reuse Annual Report. [Minn. R. 7001]
5.20.36	Annual Report. The Permittee shall submit an Effluent Reuse Annual Report by January 21 of each year following permit issuance. The report shall include but not be limited to: <ul style="list-style-type: none"> a) Total amount of water reused, including the annual, monthly and daily volume of reused wastewater at each location; b) Inventory of sites where reused wastewater was used, including how the water was used, the locations (including a map, if appropriate), the average number of persons estimated as being served on a daily basis, and the persons responsible for the reclaimed wastewater at each site; c) Any agreements between the Permittee and recycled wastewater user(s) that define the responsibilities for meeting the requirements of this chapter at the reuse site (if appropriate); d) Summary of the quality of reused wastewater; e) Description of public notification and/or public information programs; f) Records of operational problems and equipment breakdowns, and any corrective and preventative actions taken as a result; and g) Reasons for noncompliance with effluent limitations, if appropriate. <p>The Permittee shall submit a report : Due by 21 days after the end of each calendar year following permit issuance. [Minn. R. 7001]</p>
5.20.37	Effluent Reuse - Restrictions. [Minn. R. 7001]
5.20.38	Except as allowed under Minn. R. 4715, "Plumbing Code", no physical connection shall be made or allowed to exist between any recycled/reused effluent system and any separate system conveying potable water. [Minn. R. 7001]
5.20.39	The Permittee shall comply with Minn. Rules ch. 4725, "Well Code" with regard to setback distances from reuse areas to water supply wells. [Minn. R. 7001]
5.20.40	Setback Distances <ul style="list-style-type: none"> 1) No irrigation with disinfected tertiary 2.2 water shall occur within 50 feet of any domestic water supply well. 2) No impoundment of disinfected tertiary 2.2 water shall occur within 100 feet of any domestic water supply well. 3) No irrigation of disinfected secondary 23 water shall occur within 100 feet of any domestic water supply well. 4) No irrigation of disinfected secondary 23 water shall occur within 100 feet of a residence or a place where public exposure could be similar to that of a park, playground or school yard. [Minn. R. 7001]
5.20.41	The portions of the piping system used in the reuse system in areas subject to access by the general public shall not include any hose bibs. Only quick couplers that differ from those used on the potable water system shall be used on the portions of the reuse water piping system in areas subject to public access. A sign shall be permanently posted at each piping system quick coupler connection point, or other distribution outlet to indicate that the water is "Recycled Water - DO NOT DRINK.". [Minn. R. 7001]
5.20.42	Effluent Reuse - Public Notification. [Minn. R. 7001]
5.20.43	Where feasible, areas where reused effluent is used for irrigation that are accessible to the public

	shall be posted with signs that are visible to the public, in a size no less than 4 inches high by 8 inches wide, that includes the following wording: "RECYCLED WATER - DO NOT DRINK". Each sign shall display an international symbol for "do not drink." The MPCA may accept alternative signage and wording, or an education program, provided the Permittee demonstrates the alternative approval will assure an equivalent degree of public notification. [Minn. R. 7001]
5.20.44	Effluent Reuse - Irrigation/Land Application. [Minn. R. 7001]
5.20.45	Effluent reuse shall not have physical or chemical characteristics that prevent the proper operation of the disposal system. The water shall be free of material that interferes with the operation of nozzles, orifices or flow measurement devices. [Minn. R. 7001]
5.20.46	Reused effluent shall be applied so as not to harm vegetative cover and so that prolonged saturated soil conditions do not develop due to the application. Reused effluent shall not be land applied during precipitation periods. [Minn. R. 7001]
5.20.47	A vegetative cover shall be seeded and maintained on the site where reused effluent is reused during the application season unless otherwise approved by the MPCA. [Minn. R. 7001]
5.20.48	Reused effluent shall not be reused for irrigation applied after vegetative cover has become dormant as a result of frost or below freezing temperatures. [Minn. R. 7001]
	Mechanical System
5.21.49	Bypass Structures. [Minn. R. 7001]
5.21.50	All structures capable of bypassing the treatment system shall be manually controlled and kept locked at all times. [Minn. R. 7001.0030]
5.21.51	Sanitary Sewer Extension Permit. [Minn. R. 7001]
5.21.52	The Permittee may be required to obtain a Sanitary Sewer Extension Permit from the MPCA for any addition, extension or replacement to the sanitary sewer. If a sewer extension permit is required, construction may not begin until plans and specifications have been submitted and a written permit is granted except as allowed in Minn. Stat. 115.07, Subd. 3(b). [Minn. R. 7001.0020, D]
5.21.53	Operator Certification. [Minn. R. 7001]
5.21.54	The Permittee shall provide a Class B state certified operator who is in direct responsible charge of the operation, maintenance and testing functions required to ensure compliance with the terms and conditions of this permit. [Minn. R. 9400]
5.21.55	If the Permittee chooses to meet operator certification requirements through a contractual agreement, the Permittee shall provide a copy of the contract to the MPCA, WQ Submittals Center. The contract shall include the certified operator's name, certificate number, company name if appropriate, the period covered by the contract and provisions for renewal; the duties and responsibilities of the certified operator; the duties and responsibilities of the permittee; and provisions for notifying the MPCA 30 days in advance of termination if the contract is terminated prior to the expiration date. [Minn. R. 9400]
5.21.56	The Permittee shall notify the MPCA within 30 days of a change in operator certification or contract status. [Minn. R. 9400]
	Drainfields
5.22.57	Subsurface Sites A and E. [Minn. R. 7001]
5.22.58	Ponding depth inspections to determine the condition of each subsurface disposal site standpipe shall be conducted once per quarter during the time the subsurface disposal sites are in use. The inspection of each subsurface disposal site shall include the identification of wet or saturated areas, depth of effluent ponding in the piezometers GW 009 and GW010, evidence of effluent at the surface, frozen components, and measurements in GW009 and GW010. Visual observations shall be recorded and inspection records shall be maintained by the owner for a minimum of three years following each inspection. The results of the inspection are not required to be

	submitted to the MPCA but shall be made available upon request by MPCA staff. [Minn. R. 7001.0150, 3(F)]
5.22.59	Indications of excessive hydraulic and organic loading to the subsurface disposal sites include prolonged saturated soil conditions, vegetative drowning or excessive ground water mounding (observed at GW009 and 010) and exceeding daily permitted flow rates as indicated by flow meters, event counters and running time clocks. [Minn. R. 7001.0150, 3(F)]
5.22.60	Routine maintenance shall be conducted to discourage the presence of rodents and other burrowing animals on the subsurface disposal sites and to allow access for inspection of piezometers GW009 and GW010. [Minn. R. 7001.0150, 3(F)]
5.22.61	A dense vegetative cover shall be maintained over the subsurface disposal sites at all times during the growing season to prevent the growth of unwanted vegetation such as trees, deep rooted nuisance plants, aquatic vegetation and to prevent erosion. [Minn. R. 7001]
5.22.62	The subsurface disposal sites shall be fenced. [Minn. R. 7001.0150, 3(F)]
5.22.63	Discharge of animal wastes, industrial wastes, petroleum products, and toxic pollutants and other hazardous wastes or substances is prohibited. [Minn. R. 7001.0150, 3(F)]
5.22.64	The Permittee shall take all reasonable steps to prohibit the discharge of any wastes other than domestic wastes into the subsurface disposal sites unless discharge of such other substances is specifically approved in writing by the MPCA. [Minn. R. 7001]
	Pretreatment: Delegated Requirements
5.23.65	Pretreatment - Definitions. [Minn. R. 7049]
5.23.66	For the purposes of these pretreatment requirements, "Significant Industrial User" (SIU) shall mean any industrial user (IU) which: <ul style="list-style-type: none"> a. is subject to Categorical Pretreatment Standards, as defined in Minnesota Rules 7049.0120, subpart 5; b. discharges 25,000 gallons per day or more of process wastewater, excluding sanitary, noncontact cooling or boiler blowdown wastewater, to the POTW; c. contributes a process wastewater containing five percent or more of the flow or load of any pollutant of concern to the POTW treatment plant; or d. is designated as significant by the Permittee on the basis that the Industrial User has a reasonable potential for adversely affecting the POTW's operation or for violating any pretreatment standard or requirement. [Minn. R. 7049]
5.23.67	Exemption. [Minn. R. 7049]
5.23.68	Industrial users qualifying as significant solely on the basis of criteria b. or c. above may be exempted from consideration as a SIU if the Permittee finds that they have no reasonable potential to adversely affect the POTW's operation or to violate pretreatment standards or requirements. <p>Industrial Users qualifying as Significant solely on the basis of criteria a. above, may be determined by the Permittee to be a Non-Significant Categorical Industrial User as provided in Minn. R. 7049.1020, subp. 24, D if the Permittee's waste discharge rules allow. [Minn. R. 7049]</p>
5.23.69	The Permittee shall notify the MPCA in writing of any Industrial User so exempted and provide justification for their exemption. [Minn. R. 7049]
5.23.70	Pretreatment - Delegated Authority. [Minn. R. 7049]
5.23.71	Under the authority of the General Pretreatment Regulations (40 CFR 403), the Permittee's pretreatment program was approved in December 1982. Amendments to the Permittee's waste discharge rules were approved May 29, 1992, December 10, 2010 and February 2013. The Permittee has been delegated authority to operate as the Publicly Owned Treatment Works (POTW) control authority under the General Pretreatment Regulations and Minn.R.Ch.7049. The Permittee shall fully and effectively implement and operate the approved pretreatment program according to the legal authorities contained therein and the General Pretreatment Regulations. [Minn. R. 7049]
5.23.72	In addition to the Prohibitions contained in the General Pretreatment Regulations and the

	approved program, the Permittee shall prohibit new discharges of non-contact cooling waters to the POTW unless there are no cost-effective alternatives. [Minn. R. 7049]
5.23.73	Existing discharges of non-contact cooling water to the wastewater treatment facility shall be eliminated where elimination is cost effective, or where an infiltration/inflow analysis and sewer system evaluation survey indicate the need for such removal. [Minn. R. 7049]
5.23.74	Pollutants of concern in the administration of the Permittee's pretreatment program shall be considered in the determination of the Significance of Industrial Users, monitoring of Significant Industrial Users, establishment of limitations on users, and communications with users. A pollutant of concern is a pollutant that is discharged, or may be discharged by an industrial user to the permittees treatment works and that is, or should be, of concern on the basis that it may cause interference or pass through as defined in Minnesota Rules 7049.0120, subparts 10 and 12. [Minn. R. 7049]
5.23.75	Legal Authority. [Minn. R. 7049]
5.23.76	The Permittee shall maintain the legal authority that allows it to fully implement its approved pretreatment program in conformance with the requirements of the General Pretreatment Regulation. The pretreatment requirements contained in this permit shall apply to the Metropolitan Council system-wide pretreatment program, until such time as they are replaced wholly or in part by pretreatment requirements contained in Minn. R. ch. 7049, an amendment to the federally approved pretreatment program, or any future permit issued by the MPCA to the Metropolitan Council. [Minn. R. 7049]
5.23.77	Industrial Users Inventory. [Minn. R. 7049]
5.23.78	The Permittee shall update its inventory of Industrial Users at least annually and as needed to ensure that all SIUs are properly identified, characterized and categorized. The Permittee shall: a. identify Industrial Users which may be subject to the POTW pretreatment program; b. characterize the discharge of pollutants to the POTW by the Industrial User; and c. determine the applicable categories for industrial users subject to National Categorical Pretreatment Standards. [Minn. R. 7049]
5.23.79	Within 30 days of the designation of an Industrial User as significant, the Permittee shall notify the SIU of all applicable pretreatment standards and requirements. The Permittee shall also notify all Industrial Users of all applicable pretreatment standards and requirements, and the Industrial Users' obligation to comply with applicable requirements under Subtitles C and D of the Resource Conservation and Recovery Act (RCRA). [Minn. R. 7049]
5.23.80	Local Limits. [Minn. R. 7049]
5.23.81	The Permittee shall develop, maintain and enforce specific local limits to implement the prohibitions listed in Minnesota Rules 7049.0140. [Minn. R. 7049]
5.23.82	The Permittee shall evaluate the need to revise local limits to effectively implement these prohibitions at least once during the term of this permit. Prior to the expiration date of this permit, the permittee shall submit, for approval, a report on the evaluation. If the evaluation determines that a more restrictive local limit is needed, the permittee shall submit for approval a suggested schedule for amending the permittee's local limits. [Minn. R. 7049]
5.23.83	The evaluation shall include a pollutant mass balance for all pollutants of concern. The mass balance shall attempt to balance the source of the pollutants (Industrial Users and other sources), the measured headwork's loading of the pollutants and the fates of the pollutants (discharge, biosolids and others). The mass balance shall make use of all available and appropriate monitoring data. The permittee shall, for all pollutants of concern, obtain sufficient data to allow the permittee to evaluate the need for local limits and to set local limits if they are needed. Monitoring shall be done at a sensitivity adequate to evaluate the need for local limits and set local limits if needed. [Minn. R. 7049]
5.23.84	Permit Significant Industrial Users. [Minn. R. 7049]

5.23.85	The Permittee shall issue and reissue permits to all existing SIUs within 180 days of expiration of the existing SIU permit for existing SIUs, or identification of a new SIU. The permit shall contain at least the following: a. a statement of duration (no longer than five (5) years); b. a statement of nontransferability without prior approval by the POTW, and provision of a copy of the existing permit to the new owner or operator; c. discharge limits based on applicable prohibited discharges in Minnesota Wastewater Pretreatment Rules (Minn. R. 7049.0140), National Categorical Pretreatment Standards, and local limits and local discharge prohibitions; d. self-monitoring, sampling, reporting, notification and record keeping requirements, including an identification of the pollutants to be monitored, sampling location, sampling frequency and sample type; and e. a statement of applicable civil and criminal penalties for violation of pretreatment standards and requirements, and any applicable compliance schedule. [Minn. R. 7049]
5.23.86	The Permittee may not extend the compliance date beyond applicable federal deadlines in any compliance schedule. [Minn. R. 7049]
5.23.87	Compliance Monitoring and Inspections. [Minn. R. 7049]
5.23.88	The Permittee shall randomly sample and analyze the discharge from Industrial Users and conduct surveillance activities to identify, independent of information supplied by Industrial Users, noncompliance with pretreatment standards. The Permittee shall inspect and sample the discharge from each SIU at least once a year. [Minn. R. 7049]
5.23.89	The Permittee shall evaluate whether each SIU needs a plan to control spill and slug discharges as provided in Minnesota Rules 7049.0830 G. Where a control plan is determined to be needed, the Permittee shall require, in the permit issued to the industrial user, that the industrial user develop and implement such a plan. [Minn. R. 7049]
5.23.90	Industrial User Reports. [Minn. R. 7049]
5.23.91	The Permittee shall receive and analyze self-monitoring reports and other reports and notices submitted by Industrial Users in accordance with requirements contained in permits issued by the Permittee and in accordance with the General Pretreatment Regulation. [Minn. R. 7049]
5.23.92	Enforcement Actions. [Minn. R. 7049]
5.23.93	The Permittee shall investigate instances of noncompliance with pretreatment standards and requirements as indicated by reports submitted by Industrial Users, by information collected by the Permittee or by other means. [Minn. R. 7049]
5.23.94	The Permittee shall collect samples, analyze data and compile information in a manner to ensure accuracy and admissibility in enforcement proceedings and judicial actions. [Minn. R. 7049]
5.23.95	In instances of noncompliance, the Permittee shall take effective enforcement action in accordance with the approved enforcement response plan. [Minn. R. 7049]
5.23.96	Data Management and Record Keeping. [Minn. R. 7049]
5.23.97	The Permittee shall maintain records documenting pretreatment activities. These records shall contain an inventory of industrial users, characterization of discharges, compliance status, permit status, and records of enforcement actions. [Minn. R. 7049]
5.23.98	The Permittee shall retain all records of monitoring activities and results for at least three (3) years and shall make the records available to EPA and the MPCA upon request. [Minn. R. 7049]
5.23.99	Public Participation. [Minn. R. 7049]
5.23.100	The Permittee shall comply with public participation requirements of 40 CFR 25 in the enforcement of national pretreatment standards. [Minn. R. 7049]
5.23.101	The Permittee shall, once a year, publish the names of Industrial Users that were in significant noncompliance with pretreatment requirements, as defined in Minnesota Rules 7049.0120, subpart 25, any time during the previous twelve (12) months. [Minn. R. 7049]
5.23.102	All industrial discharge data shall be made available to the public upon request. [Minn. R. 7049]
5.23.103	Program Resources. [Minn. R. 7049]
5.23.104	The Permittee shall acquire sufficient resources and qualified personnel to carry out the program

	implementation procedures described in this permit. [Minn. R. 7049]
5.23.105	Program Modification. [Minn. R. 7049]
5.23.106	The Permittee shall submit to the MPCA a statement of the basis for desired program modifications and a modified program description for all substantial modifications as defined in Minnesota Rules 7049.0980. The Permittee shall await formal approval from the MPCA before implementing substantial program modifications. [Minn. R. 7049]
5.23.107	The Permittee shall notify the MPCA of non-substantial modifications to its pretreatment program at least 45 days prior to implementing the modification. [Minn. R. 7049]
5.23.108	Non-substantial modifications are deemed approved unless the MPCA notifies the Permittee otherwise within 45 days. [Minn. R. 7049]
5.23.109	Notification Requirements. [Minn. R. 7049]
5.23.110	The Permittee shall notify the MPCA of planned or actual changes in the discharges from SIUs which will require changes to the user's control document and which may affect the Permittee's effluent. [Minn. R. 7049]
5.23.111	The Permittee shall supply the MPCA with information regarding the discharge, compliance status, or enforcement actions taken for any industrial user upon request. [Minn. R. 7049]
5.23.112	Pretreatment Annual Report. [Minn. R. 7049]
5.23.113	The Permittee shall submit a pretreatment annual report : Due by March 31 of each year following permit issuance. The Permittee may continue to submit one Pretreatment Annual Report that includes all of their wastewater treatment facilities. [Minn. R. 7049]
5.23.114	The Permittee shall submit the Pretreatment Annual Report annually to the following address: MPCA Attn: WQ Submittals Center 520 Lafayette Road North St. Paul, Minnesota 55155-4194 The Pretreatment Annual Report shall describe the Permittee's pretreatment activities during the reporting period and shall contain, at a minimum, the items described in this section of the permit. [Minn. R. 7049]
5.23.115	The Pretreatment Annual Report shall describe the pretreatment activities during the previous calendar year and shall contain the following lists: a. An updated list of the Permittee's significant industrial users including their names, addresses, any applicable federal categorical standards, and a summary total of significant industrial users and categorical industrial users. b. A separate list of deletions from and additions to previously submitted lists of SIUs, with a brief explanation for each deletion. c. A list of SIUs with expired permits. [Minn. R. 7049]
5.23.116	The Pretreatment Annual Report shall contain the following descriptions: a. A characterization of the compliance status of each SIU during the reporting year. The compliance characterization shall at least indicate status as follows: 1. no violations noted with discharge limits, and compliance with monitoring and reporting requirements is sufficient to determine compliance with discharge limitations; 2. violations were noted with discharge limits, or violations of monitoring and reporting requirements that may have impaired the Permittee's ability to determine compliance with discharge limitations were noted, but the noncompliance does not meet the definition of significant noncompliance as referenced below; 3. significant noncompliance (as defined by 40 CFR 403.8(f)(2)(vii)); or 4. status unknown. b. A description of the standards or requirements that were violated for SIUs that are out of compliance with pretreatment standards. For an SIU in significant noncompliance, the characterization shall note the reason for the significant violations (if known) and whether the

	<p>SIU is on a compliance schedule. If the SIU is on a compliance schedule, the date of final compliance shall be noted in the report.</p> <p>c. A description of any upsets, interference, or pass through incidents at the POTW which the Permittee knows or suspects were caused by Industrial Users of the POTW system. The description shall include the reasons why the incidents occurred, the corrective actions taken, and the Industrial Users responsible, if known. [Minn. R. 7049]</p>
5.23.117	<p>The permittee shall, for all pollutants of concern, obtain sufficient data to allow the permittee to evaluate the need for local limits, and shall set local limits if they are needed. Monitoring shall be done at a sensitivity adequate to evaluate the need for local limits and set local limits if they are needed. [Minn. R. 7049]</p>
5.23.118	<p>The Pretreatment Annual Report shall contain the following summaries:</p> <p>a. A summary of the discharge monitoring data for each SIU for the reporting year. This summary shall include all available data and shall accurately represent the discharge by the user.</p> <p>b. A summary of the inspection and sampling activities conducted by the POTW during the reporting year to gather information and data regarding Industrial Users. The summary shall include identification of the Industrial Users subject to surveillance by the POTW and an indication of the type (inspection or sampling) and the number of surveillance activities performed.</p> <p>c. A summary of the enforcement actions by the POTW during the reporting year. The summary shall include the names and addresses of the Industrial Users that were the subject of enforcement action, the enforcement action taken, and whether the Industrial User has returned to compliance.</p> <p>d. A summary of the Permittee's pretreatment budget for the reporting year, including the cost of personnel, equipment and services employed in the pretreatment program.</p> <p>e. A summary of public participation activities to involve and inform the public. This shall include a copy of the annual publication of significant noncompliance, if such publication was needed to comply with 40 CFR 403.8(f)(2)(vii). [Minn. R. 7049]</p>
	<p>Biosolids: Septage Transfer</p>
5.24.119	<p>Authorization. [Minn. R. 7041]</p>
5.24.120	<p>This permit authorizes the permittee to store and/or transfer only wastewater biosolids and/or septage to another permitted treatment facility for final treatment and disposal in accordance with the provision in this chapter and Minn. R. ch. 7041. For the purpose for this permit chapter, septage is referred to as biosolids.</p> <p>Land application of biosolids and/or septage is not authorized by this permit. [Minn. R. 7041]</p>
5.24.121	<p>Reporting Requirements. [Minn. R. 7041]</p>
5.24.122	<p>The Permittee shall submit a biosolids annual report : Due annually, by the 31st of December on a form provided by or approved by the MPCA. The report shall include the requirements in Minnesota Rules, part 7041.1700. [Minn. R. 7041.1700]</p>
5.24.123	<p>The permittee shall submit a Biosolids Annual Report by December 31 of each year for biosolids storage and/or transfer activities occurring during the cropping year previous to December 31. The report shall indicate whether or not biosolids were transferred and/or stored. If biosolids were transferred, the report shall describe how much was transferred, where it was transferred to, the name of the facility that accepted the transfer and the contact person at that facility. "Cropping year" means a year beginning on September 1 of the year prior to the growing season and ending August 31 the year the crop is harvested. For example, the 2012 cropping year began September 1, 2011, and ended August 31, 2012. [Minn. R. 7041]</p>
5.24.124	<p>The Permittee shall submit the Biosolids Annual Report to: Biosolids Coordinator, Minnesota Pollution Control Agency, 520 Lafayette Road North, St Paul Minnesota 551554194. [Minn. R. 7041]</p>
	<p>Total Facility Requirements (SDS)</p>

5.25.125	No Discharge. There shall be no point source discharge to surface water from the permitted activity. [Minn. R. 7001.]
5.25.126	Definitions. Refer to the 'Permit Users Manual' found on the MPCA website (www.pca.state.mn.us) for standard definitions. [Minn. R. 7001.]
5.25.127	Incorporation by Reference. The following applicable federal and state laws are incorporated by reference in this permit, are applicable to the Permittee, and are enforceable parts of this permit: 40 CFR pts. 122.41, 122.42, 136, 403 and 503; Minn. R. pts. 7001, 7041, 7045, 7050, 7052, 7053, 7060, and 7080; and Minn. Stat. ch. 115 and 116. [Minn. R. 7001]
5.25.128	Permittee Responsibility. The Permittee shall perform the actions or conduct the activity authorized by the permit in compliance with the conditions of the permit and, if required, in accordance with the plans and specifications approved by the Agency. [Minn. R. 7001.0150, subp. 3(E)]
5.25.129	Toxic Discharges Prohibited. Whether or not this permit includes effluent limitations for toxic pollutants, the Permittee shall not discharge a toxic pollutant except according to Code of Federal Regulations, Title 40, sections 400 to 460 and Minnesota Rules 7050, 7052, 7053 and any other applicable MPCA rules. [Minn. R. 7001.1090, subp. 1(A)]
5.25.130	Nuisance Conditions Prohibited. The Permittee's discharge shall not cause any nuisance conditions including, but not limited to: floating solids, scum and visible oil film, acutely toxic conditions to aquatic life, or other adverse impact on the receiving water. [Minn. R. 7050.0210, subp. 2]
5.25.131	Property Rights. This permit does not convey a property right or an exclusive privilege. [Minn. R. 7001.0150, subp. 3(C)]
5.25.132	Liability Exemption. In issuing this permit, the state and the MPCA assume no responsibility for damage to persons, property, or the environment caused by the activities of the Permittee in the conduct of its actions, including those activities authorized, directed, or undertaken under this permit. To the extent the state and the MPCA may be liable for the activities of its employees, that liability is explicitly limited to that provided in the Tort Claims Act. [Minn. R. 7001.0150, subp. 3(O)]
5.25.133	The MPCA's issuance of this permit does not obligate the MPCA to enforce local laws, rules, or plans beyond what is authorized by Minnesota Statutes. [Minn. R. 7001.0150, subp. 3(D)]
5.25.134	Liabilities. The MPCA's issuance of this permit does not release the Permittee from any liability, penalty or duty imposed by Minnesota or federal statutes or rules or local ordinances, except the obligation to obtain the permit. [Minn. R. 7001.0150, subp. 3(A)]
5.25.135	The issuance of this permit does not prevent the future adoption by the MPCA of pollution control rules, standards, or orders more stringent than those now in existence and does not prevent the enforcement of these rules, standards, or orders against the Permittee. [Minn. R. 7001.0150, subp. 3(B)]
5.25.136	Severability. The provisions of this permit are severable and, if any provisions of this permit or the application of any provision of this permit to any circumstance are held invalid, the application of such provision to other circumstances and the remainder of this permit shall not be affected thereby. [Minn. R. 7001]
5.25.137	Compliance with Other Rules and Statutes. The Permittee shall comply with all applicable air quality, solid waste, and hazardous waste statutes and rules in the operation and maintenance of the facility. [Minn. R. 7001]
5.25.138	Inspection and Entry. When authorized by Minn. Stat. ch. 115.04; 115B.17, subd. 4; and 116.091, and upon presentation of proper credentials, the agency, or an authorized employee or agent of the agency, shall be allowed by the Permittee to enter at reasonable times upon the property of the Permittee to examine and copy books, papers, records, or memoranda pertaining to the construction, modification, or operation of the facility covered by the permit or pertaining to the activity covered by the permit; and to conduct surveys and investigations, including sampling or monitoring, pertaining to the construction, modification, or operation of the facility covered by the permit or pertaining to the activity covered by the permit. [Minn. R. 7001.0150, subp. 3(I)]
5.25.139	Control Users. The Permittee shall regulate the users of its wastewater treatment facility so as to prevent the introduction of pollutants or materials that may result in the inhibition or disruption

	of the conveyance system, treatment facility or processes, or disposal system that would contribute to the violation of the conditions of this permit or any federal, state or local law or regulation. [Minn. R. 7001.0150, subp. 3(F)]
5.25.140	Sampling. [Minn. R. 7001]
5.25.141	Representative Sampling. Samples and measurements required by this permit shall be conducted as specified in this permit and shall be representative of the discharge or monitored activity. [Minn. R. 7001.0150, 2(B)]
5.25.142	Additional Sampling. If the Permittee monitors more frequently than required, the results and the frequency of monitoring shall be reported on the Discharge Monitoring Report (DMR) or another MPCA-approved form for that reporting period. [Minn. R. 7001.1090, subp. 1(E)]
5.25.143	Certified Laboratory. A laboratory certified by the Minnesota Department of Health and/or registered by the MPCA shall conduct analyses required by this permit. Analyses of dissolved oxygen, pH, temperature, specific conductance, and total residual oxidants (chlorine, bromine) do not need to be completed by a certified laboratory but shall comply with manufacturers specifications for equipment calibration and use. [Minn. R. 4740.2010, Minn. R. 4740.2050 through 2120]
5.25.144	Sample Preservation and Procedure. Sample preservation and test procedures for the analysis of pollutants shall conform to 40 CFR Part 136 and Minn. R. 7041.3200. [Minn. R. 7001.0150, 2(B), Minn. R. 7041.3200]
5.25.145	Equipment Calibration: Flow meters, pumps, flumes, lift stations or other flow monitoring equipment used for purposes of determining compliance with permit shall be checked and/or calibrated for accuracy at least twice annually. [Minn. R. 7001.0150, 2(B and C)]
5.25.146	Maintain Records. The Permittee shall keep the records required by this permit for at least three years, including any calculations, original recordings from automatic monitoring instruments, and laboratory sheets. The Permittee shall extend these record retention periods upon request of the MPCA. The Permittee shall maintain records for each sample and measurement. The records shall include the following information: a. the exact place, date, and time of the sample or measurement; b. the date of analysis; c. the name of the person who performed the sample collection, measurement, analysis, or calculation; d. the analytical techniques, procedures and methods used; and e. the results of the analysis. [Minn. R. 7001.0150, 2(C)]
5.25.147	Completing Reports. The Permittee shall submit the results of the required sampling and monitoring activities on the forms provided, specified, or approved by the MPCA. The information shall be recorded in the specified areas on those forms and in the units specified. Required forms may include DMR Supplemental/Sample Value Form Individual values for each sample and measurement shall be recorded on the DMR Supplemental/Sample Value Form which, if required, will be provided by the MPCA. DMR Supplemental/Sample Value Forms shall be submitted with the appropriate DMRs. You may design and use your own supplemental form; however it shall be approved by the MPCA. Note: Required summary information shall also be recorded on the DMR. Summary information that is submitted ONLY on the DMR Supplemental/Sample Value Form does not comply with the reporting requirements. [Minn. R. 7001.1090, 1(D), Minn. R. 7001.150, 2(B)]
5.25.148	Submitting Reports. DMRs, DMR supplemental forms and related attachments must be electronically submitted via the MPCA Online Services Portal after authorization is approved. DMRs and DMR Supplemental Forms shall be electronically submitted by the 21st day of the month following the sampling period or as otherwise specified in this permit. Electronic DMR submittal shall be complete on or before 11:59 PM of the 21st day of the month following the sampling period or as otherwise specified in this permit. A DMR shall be submitted for each required station even if no discharge occurred during the reporting period.

		Other reports required by this permit shall be postmarked by the date specified in the permit to: MPCA, Attn: WQ Submittals Center, 520 Lafayette Road North, St Paul Minnesota 551554194. [Minn. R. 7001..0150, Subp. 2(B), Minn. R. 7001..0150, Subp. 3(H)]
5.25.149		Incomplete or Incorrect Reports. The Permittee shall immediately submit an electronically amended report or DMR to the MPCA upon discovery by the Permittee or notification by the MPCA that it has submitted an incomplete or incorrect report or DMR. The amended report or DMR shall contain the missing or corrected data along with a cover letter explaining the circumstances of the incomplete or incorrect report. If it is impossible to electronically amend the report or DMR, the Permittee shall immediately notify the MPCA and the MPCA will provide direction for the amendment submittals. [Minn. R. 7001.0150, 3(G)]
5.25.150		Required Signatures. All DMRs, forms, reports, and other documents submitted to the MPCA shall be signed by the Permittee or the duly authorized representative of the Permittee. Minn. R. 7001.0150, subp. 2, item D. The person or persons that sign the DMRs, forms, reports or other documents shall certify that he or she understands and complies with the certification requirements of Minn. R. 7001.0070 and 7001.0540, including the penalties for submitting false information. Technical documents, such as design drawings and specifications and engineering studies required to be submitted as part of a permit application or by permit conditions, shall be certified by a registered professional engineer. [Minn. R. 7001.0540]
5.25.151		Detection Level. The Permittee shall report monitoring results below the reporting limit (RL) of a particular instrument as "<" the value of the RL. For example, if an instrument has a RL of 0.1 mg/L and a parameter is not detected at a value of 0.1 mg/L or greater, the concentration shall be reported as "<0.1 mg/L." "Non-detected," "undetected," "below detection limit," and "zero" are unacceptable reporting results, and are permit reporting violations. Where sample values are less than the level of detection and the permit requires reporting of an average, the Permittee shall calculate the average as follows: a. If one or more values are greater than the level of detection, substitute zero for all nondetectable values to use in the average calculation. b. If all values are below the level of detection, report the averages as "<" the corresponding level of detection. c. Where one or more sample values are less than the level of detection, and the permit requires reporting of a mass, usually expressed as kg/day, the Permittee shall substitute zero for all nondetectable values. [Minn. R. 7001.0150, 2(B)]
5.25.152		Records. The Permittee shall, when requested by the Agency, submit within a reasonable time the information and reports that are relevant to the control of pollution regarding the construction, modification, or operation of the facility covered by the permit or regarding the conduct of the activity covered by the permit. [Minn. R. 7001.0150, 3(H)]
5.25.153		Confidential Information. Except for data determined to be confidential according to Minn. Stat. ch. 116.075, subd. 2, all reports required by this permit shall be available for public inspection. Effluent data shall not be considered confidential. To request the Agency maintain data as confidential, the Permittee shall follow Minn. R. 7000.1300. [Minn. R. 7000.1300]
5.25.154		Noncompliance and Enforcement. [Minn. R. 7001]
5.25.155		Subject to Enforcement Action and Penalties. Noncompliance with a term or condition of this permit subjects the Permittee to penalties provided by federal and state law set forth in section 309 of the Clean Water Act; United States Code, title 33, section 1319, as amended; and in Minn. Stat. ch. 115.071 and 116.072, including monetary penalties, imprisonment, or both. [Minn. R. 7001.1090, 1(B)]
5.25.156		Criminal Activity. The Permittee may not knowingly make a false statement, representation, or certification in a record or other document submitted to the Agency. A person who falsifies a report or document submitted to the Agency, or tampers with, or knowingly renders inaccurate a monitoring device or method required to be maintained under this permit is subject to criminal and civil penalties provided by federal and state law. [Minn. R. 7001.0150, 3(G), Minn. R.

		7001.1090, 1(G and H), Minn. Stat. ch. 609.671, 1]
	5.25.157	Noncompliance Defense. It shall not be a defense for the Permittee in an enforcement action that it would have been necessary to halt or reduce the permitted activity in order to maintain compliance with the conditions of this permit. [Minn. R. 7001]
	5.25.158	<p>Effluent Violations. If sampling by the Permittee indicates a violation of any discharge limitation specified in this permit, the Permittee shall immediately make every effort to verify the violation by collecting additional samples, if appropriate, investigate the cause of the violation, and take action to prevent future violations. If the permittee discovers that noncompliance with a condition of the permit has occurred which could endanger human health, public drinking water supplies, or the environment, the Permittee shall within 24 hours of the discovery of the noncompliance, orally notify the commissioner and submit a written description of the noncompliance within 5 days of the discovery. The written description shall include items a. through e., as listed below. If the Permittee discovers other non-compliance that does not explicitly endanger human health, public drinking water supplies, or the environment, the non-compliance shall be reported during the next reporting period to the MPCA with its Discharge Monitoring Report (DMR). If no DMR is required within 30 days, the Permittee shall submit a written report within 30 days of the discovery of the noncompliance. This description shall include the following information:</p> <ul style="list-style-type: none"> a. a description of the event including volume, duration, monitoring results and receiving waters; b. the cause of the event; c. the steps taken to reduce, eliminate and prevent reoccurrence of the event; d. the exact dates and times of the event; and e. steps taken to reduce any adverse impact resulting from the event. [Minn. R. 7001.150, 3(K)]
	5.25.159	<p>Upset Defense. In the event of temporary noncompliance by the Permittee with an applicable effluent limitation resulting from an upset at the Permittee's facility due to factors beyond the control of the Permittee, the Permittee has an affirmative defense to an enforcement action brought by the Agency as a result of the noncompliance if the Permittee demonstrates by a preponderance of competent evidence:</p> <ul style="list-style-type: none"> a. the specific cause of the upset; b. that the upset was unintentional; c. that the upset resulted from factors beyond the reasonable control of the Permittee and did not result from operational error, improperly designed treatment facilities, inadequate treatment facilities, lack of preventative maintenance, or increases in production which are beyond the design capability of the treatment facilities; d. that at the time of the upset the facility was being properly operated; e. that the Permittee properly notified the Commissioner of the upset in accordance with Minn. R. 7001.1090, subp. 1, item I; and f. that the Permittee implemented the remedial measures required by Minn. R. 7001.0150, subp. 3, item J. [Minn. R. 7001.1090]
	5.25.160	Release. [Minn. R. 7001]
	5.25.161	Unauthorized Releases of Wastewater Prohibited. Except for discharges from outfalls specifically authorized by this permit, overflows, discharges, spills, or other releases of wastewater or materials to the environment, whether intentional or not, are prohibited. However, the MPCA will consider the Permittee's compliance with permit requirements, frequency of release, quantity, type, location, and other relevant factors when determining appropriate action. [Minn. Stat. ch. 115.061]
	5.25.162	<p>Discovery of a release. Upon discovery of a release, the Permittee shall:</p> <ul style="list-style-type: none"> a. Take all reasonable steps to immediately end the release. b. Notify the Minnesota Department of Public Safety Duty Officer at 1(800)422-0798 or (651)649-5451 (metro area) immediately upon discovery of the release. You may contact the MPCA during business hours at 1(800)657-3864 or (651)296-6300 (metro area). c. Recover as rapidly and as thoroughly as possible all substances and materials released or

	<p>immediately take other action as may be reasonably possible to minimize or abate pollution to waters of the state or potential impacts to human health caused thereby. If the released materials or substances cannot be immediately or completely recovered, the Permittee shall contact the MPCA. If directed by the MPCA, the Permittee shall consult with other local, state or federal agencies (such as the Minnesota Department of Natural Resources and/or the Wetland Conservation Act authority) for implementation of additional clean-up or remediation activities in wetland or other sensitive areas. [Minn. R. 7001.1090]</p>
5.25.163	<p>Sampling of a release. Upon discovery of a release, the Permittee shall:</p> <ol style="list-style-type: none">Collect representative samples of the release. The Permittee shall sample the release for parameters of concern immediately following discovery of the release. The Permittee may contact the MPCA during business hours to discuss the sampling parameters and protocol. In addition, Fecal Coliform Bacteria samples shall be collected where it is determined by the Permittee that the release contains or may contain sewage. If the release cannot be immediately stopped, the Permittee shall consult with MPCA regarding additional sampling requirements. Samples shall be collected at least, but not limited to, two times per week for as long as the release continues.Submit the sampling results on the Release Sampling Form (http://www.pca.state.mn.us/index.php/view-document.html?gid=18867). The Release Sampling Form shall be submitted to the MPCA with the next DMR or within 30 days whichever is sooner. [Minn. R. 7001.1090]
5.25.164	<p>Bypass. [Minn. R. 7001]</p>
5.25.165	<p>Anticipated bypass. The permittee may allow any bypass to occur which does not cause effluent limitations to be exceeded, but only if the bypass is for essential maintenance to assure efficient operation of the facility. The permittee shall submit prior notice, if possible at least ten days before the date of the bypass to the MPCA.</p> <p>The notice of the need for an anticipated bypass shall include the following information:</p> <ol style="list-style-type: none">the proposed date and estimated duration of the bypass;the alternatives to bypassing; anda proposal for effluent sampling during the bypass. Any bypass wastewater shall enter waters of the state from outfalls specifically authorized by this permit. Therefore, samples shall be collected at the frequency and location identified in this permit or two times per week for as long as the bypass continues, whichever is more frequent. [Minn. R. 7001.1090, 1(J)]
5.25.166	<p>All other bypasses are prohibited. The MPCA may take enforcement action against the Permittee for a bypass, unless the specific conditions described in Minn. R. Ch. 7001.1090 subp. 1, K and 122.41(m)(4)(i) are met.</p> <p>In the event of an unanticipated bypass, the permittee shall:</p> <ol style="list-style-type: none">Take all reasonable steps to immediately end the bypass.Notify the Minnesota Department of Public Safety Duty Officer at 1(800)422-0798 or (651)649-5451 (metro area) immediately upon commencement of the bypass. You may contact the MPCA during business hours at 1(800)657-3864 or (651)296-6300 (metro area).Immediately take action as may be reasonably possible to minimize or abate pollution to waters of the state or potential impacts to human health caused thereby. If directed by the MPCA, the Permittee shall consult with other local, state or federal agencies for implementation of abatement, clean-up, or remediation activities.Only allow bypass wastewater as specified in this section to enter waters of the state from outfalls specifically authorized by this permit. Samples shall be collected at the frequency and location identified in this permit or two times per week for as long as the bypass continues, whichever is more frequent. The permittee shall also follow the reporting requirements for effluent violations as specified in this permit. [40 CFR 122.41(m)(4)(i), Minn. R. 7001.1090, 1(K),

	Minn. Stat. ch. 115.061]
5.25.167	Operation and Maintenance. [Minn. R. 7001]
5.25.168	The Permittee shall at all times properly operate and maintain the facilities and systems of treatment and control, and the appurtenances related to them which are installed or used by the Permittee to achieve compliance with the conditions of the permit. Proper operation and maintenance includes effective performance, adequate funding, adequate operator staffing and training, and adequate laboratory and process controls, including appropriate quality assurance procedures. The Permittee shall install and maintain appropriate backup or auxiliary facilities if they are necessary to achieve compliance with the conditions of the permit and, for all permits other than hazardous waste facility permits, if these backup or auxiliary facilities are technically and economically feasible Minn. R. 7001.0150. subp. 3, item F. [Minn. R. 7001.0150, 3(F)]
5.25.169	In the event of a reduction or loss of effective treatment of wastewater at the facility, the Permittee shall control production or curtail its discharges to the extent necessary to maintain compliance with the terms and conditions of this permit. The Permittee shall continue this control or curtailment until the wastewater treatment facility has been restored or until an alternative method of treatment is provided. [Minn. R. 7001.1090, 1(C)]
5.25.170	Solids Management. The Permittee shall properly store, transport, and dispose of biosolids, septage, sediments, residual solids, filter backwash, screenings, oil, grease, and other substances so that pollutants do not enter surface waters or ground waters of the state. Solids should be disposed of in accordance with local, state and federal requirements. [40 CFR 503, Minn. R. 7041]
5.25.171	Scheduled Maintenance. The Permittee shall schedule maintenance of the treatment works during non-critical water quality periods to prevent degradation of water quality, except where emergency maintenance is required to prevent a condition that would be detrimental to water quality or human health. [Minn. R. 7001.0150, 3(F), Minn. R. 7001.150, 2(B)]
5.25.172	Control Tests. In-plant control tests shall be conducted at a frequency adequate to ensure compliance with the conditions of this permit. [Minn. R. 7001.0150, 3(F), Minn. R. 7001.150, 2(B)]
5.25.173	Changes to the Facility or Permit. [Minn. R. 7001]
5.25.174	Permit Modifications. Except as provided under Minnesota Statutes, section 115.07, subdivisions 1 and 3, no person required by statute or rule to obtain a permit may construct, install, modify, or operate the facility to be permitted, nor shall a person commence an activity for which a permit is required by statute or rule until the agency has issued a written permit for the facility or activity. Permittees that propose to make a change to the facility or discharge that requires a permit modification shall follow Minn. R. 7001.0190. If the Permittee cannot determine whether a permit modification is needed, the Permittee shall contact the MPCA prior to any action. It is recommended that the application for permit modification be submitted to the MPCA at least 180 days prior to the planned change. [Minn. R. 7001.0030]
5.25.175	Plans, specifications and MPCA approval are not necessary when maintenance dictates the need for installation of new equipment, provided the equipment is the same design size and has the same design intent. For instance, a broken pipe, lift station pump, aerator, or blower can be replaced with the same design-sized equipment without MPCA approval. If the proposed construction is not expressly authorized by this permit, it may require a permit modification. If the construction project requires an Environmental Assessment Worksheet under Minn. R. 4410, no construction shall begin until a negative declaration is issued and all approvals are received or implemented. [Minn. R. 7001.0030]
5.25.176	Report Changes. The Permittee shall give advance notice as soon as possible to the MPCA of any substantial changes in operational procedures, activities that may alter the nature or frequency of the discharge, and/or material factors that may affect compliance with the conditions of this permit. [Minn. R. 7001.0150, 3(M)]
5.25.177	Chemical Additives. The Permittee shall receive prior written approval from the MPCA before increasing the use of a chemical additive authorized by this permit, or using a chemical additive not authorized by this permit, in quantities or concentrations that have the potential to change

	<p>the characteristics, nature and/or quality of the discharge.</p> <p>The Permittee shall request approval for an increased or new use of a chemical additive at least 60 days, or as soon as possible, before the proposed increased or new use. This written request shall include at least the following information for the proposed additive:</p> <ul style="list-style-type: none"> a. The process for which the additive will be used; b. Safety Data Sheet (SDS) which shall include aquatic toxicity, human health, and environmental fate information for the proposed additive. The aquatic toxicity information shall include at minimum the results of: a) a 48-hour LC50 or EC50 acute study for a North American freshwater planktonic crustacean (either Ceriodaphnia or Daphnia sp.) and b) a 96-hour LC50 acute study for rainbow trout, bluegill or fathead minnow or another North American freshwater aquatic species other than a planktonic crustacean; c. a complete product use and instruction label; d. the commercial and chemical names and Chemical Abstract Survey (CAS) number for all ingredients in the additive (If the MSDS does not include information on chemical composition, including percentages for each ingredient totaling to 100%, the Permittee shall contact the supplier to have this information provided); and e. The proposed method of application, application frequency, concentration, and daily average and maximum rates of use. <p>Upon review of the information submitted regarding the proposed chemical additive, the MPCA may require additional information be submitted for consideration. This permit may be modified to restrict the use or discharge of a chemical additive and include additional influent and effluent monitoring requirements. Approval for the use of an additive shall not justify the exceedance of any effluent limitation nor shall it be used as a defense against pollutant levels in the discharge causing or contributing to the violation of a water quality standard. [Minn. R. 7001.0170]</p>
5.25.178	<p>MPCA Initiated Permit Modification, Suspension, or Revocation. The MPCA may modify or revoke and reissue this permit pursuant to Minn. R. 7001.0170. The MPCA may revoke without reissuance this permit pursuant to Minn. R. 7001.0180. [Minn. R. 7001.0170, Minn. R. 7001.0180]</p>
5.25.179	<p>TMDL Impacts. Facilities that discharge to an impaired surface water, watershed or drainage basin may be required to comply with additional permits or permit requirements, including additional restriction or relaxation of limits and monitoring as authorized by the CWA 303(d)(4)(A) and 40 CFR 122.44.I.2.i., necessary to ensure consistency with the assumptions and requirements of any applicable US EPA approved wasteload allocations resulting from Total Maximum Daily Load (TMDL) studies. [Minn. R. 7001]</p>
5.25.180	<p>Permit Transfer. The permit is not transferable to any person without the express written approval of the Agency after compliance with the requirements of Minn. R. 7001.0190. A person to whom the permit has been transferred shall comply with the conditions of the permit. [Minn. R. 7001.0150, 3(N)]</p>
5.25.181	<p>Facility Closure. The Permittee is responsible for closure and post-closure care of the facility. The Permittee shall notify the MPCA of a significant reduction or cessation of the activities described in this permit at least 180 days before the reduction or cessation. The MPCA may require the Permittee to provide to the MPCA a facility Closure Plan for approval.</p> <p>Facility closure that could result in a potential long-term water quality concern, such as the ongoing discharge of wastewater to surface or ground water, may require a permit modification or reissuance.</p> <p>The MPCA may require the Permittee to establish and maintain financial assurance to ensure performance of certain obligations under this permit, including closure, post-closure care and remedial action at the facility. If financial assurance is required, the amount and type of financial assurance, and proposed modifications to previously MPCA-approved financial assurance, shall be approved by the MPCA. [Minn. Stat. ch. 116.07, 4]</p>

5.25.182

Permit Reissuance. If the Permittee desires to continue permit coverage beyond the date of permit expiration, the Permittee shall submit an application for permit reissuance: Due by 180 days prior to permit expiration. If the Permittee does not intend to continue the activities authorized by this permit after the expiration date of this permit, the Permittee shall notify the MPCA in writing at least 180 days before permit expiration.

If the Permittee has submitted a timely application for permit reissuance, the Permittee may continue to conduct the activities authorized by this permit, in compliance with the requirements of this permit, until the MPCA takes final action on the application, unless the MPCA determines any of the following (Minn. R. 7001.0040 and 7001.0160):

- a. The Permittee is not in substantial compliance with the requirements of this permit, or with a stipulation agreement or compliance schedule designed to bring the Permittee into compliance with this permit;
- b. The MPCA, as a result of an action or failure to act by the Permittee, has been unable to take final action on the application on or before the expiration date of the permit;
- c. The Permittee has submitted an application with major deficiencies or has failed to properly supplement the application in a timely manner after being informed of deficiencies.

[Minn. R. 7001.0160]



6. Submittal action summary

GW 001	Well, Upgradient	
		Facility Specific Limit and Monitoring Requirements
	6.1.1	The Permittee shall submit a monthly DMR: Due by 21 days after the end of each calendar month following permit issuance. [Minn. R. 7001.0150, Subp. 2(B)]
GW 002	Well, Downgradient	
		Facility Specific Limit and Monitoring Requirements
	6.2.1	The Permittee shall submit a monthly DMR: Due by 21 days after the end of each calendar month following permit issuance. [Minn. R. 7001.0150, Subp. 2(B)]
GW 003	Well, Upgradient	
		Facility Specific Limit and Monitoring Requirements
	6.3.1	The Permittee shall submit a monthly DMR: Due by 21 days after the end of each calendar month following permit issuance. [Minn. R. 7001.0150, Subp. 2(B)]
GW 004	Well, Downgradient	
		Facility Specific Limit and Monitoring Requirements
	6.4.1	The Permittee shall submit a monthly DMR: Due by 21 days after the end of each calendar month following permit issuance. [Minn. R. 7001.0150, Subp. 2(B)]
GW 005	Well, Other	
		Facility Specific Limit and Monitoring Requirements
	6.5.1	The Permittee shall submit a monthly DMR: Due by 21 days after the end of each calendar month following permit issuance. [Minn. R. 7001.0150, Subp. 2(B)]
GW 006	Well, Other	
		Facility Specific Limit and Monitoring Requirements
	6.6.1	The Permittee shall submit a monthly DMR: Due by 21 days after the end of each calendar month following permit issuance. [Minn. R. 7001.0150, Subp. 2(B)]
GW 007	Well, Upgradient	
		Facility Specific Limit and Monitoring Requirements
	6.7.1	The Permittee shall submit a monthly DMR: Due by 21 days after the end of each calendar month following permit issuance. [Minn. R. 7001.0150, Subp. 2(B)]
GW 008	Well, Downgradient	
		Facility Specific Limit and Monitoring Requirements
	6.8.1	The Permittee shall submit a monthly DMR: Due by 21 days after the end of each calendar month following permit issuance. [Minn. R. 7001.0150, Subp. 2(B)]
GW 009	Piezometer, Other	
		Facility Specific Limit and Monitoring Requirements
	6.9.1	The Permittee shall submit a monthly DMR: Due by 21 days after the end of each calendar month following permit issuance. [Minn. R. 7001.0150, Subp. 2(B)]
GW 010	Piezometer, Other	
		Facility Specific Limit and Monitoring Requirements
	6.10.1	The Permittee shall submit a monthly DMR: Due by 21 days after the end of each calendar month following permit issuance. [Minn. R. 7001.0150, Subp. 2(B)]
WS 001	Influent Waste	

		Facility Specific Limit and Monitoring Requirements
	6.11.1	The Permittee shall submit a monthly DMR: Due by 21 days after the end of each calendar month following permit issuance. [Minn. R. 7001.0150, Subp. 2(B)]
WS 002	Intermediate: WW to Land	
		Facility Specific Limit and Monitoring Requirements
	6.12.1	The Permittee shall submit a monthly DMR: Due by 21 days after the end of each calendar month following permit issuance. [Minn. R. 7001.0150, Subp. 2(B)]
WS 003	Internal Waste Stream	
		Facility Specific Limit and Monitoring Requirements
	6.13.1	The Permittee shall submit a monthly DMR: Due by 21 days after the end of each calendar month following permit issuance. [Minn. R. 7001.0150, Subp. 2(B)]
WS 004	Internal Waste Stream	
		Facility Specific Limit and Monitoring Requirements
	6.14.1	The Permittee shall submit a monthly DMR: Due by 21 days after the end of each calendar month following permit issuance. [Minn. R. 7001.0150, Subp. 2(B)]
WS 005	Intermediate: WW to Land	
		Facility Specific Limit and Monitoring Requirements
	6.15.1	The Permittee shall submit a monthly DMR: Due by 21 days after the end of each calendar month following permit issuance. [Minn. R. 7001.0150, Subp. 2(B)]
WS 006	Intermediate: WW to Land	
		Facility Specific Limit and Monitoring Requirements
	6.16.1	The Permittee shall submit a monthly DMR: Due by 21 days after the end of each calendar month following permit issuance. [Minn. R. 7001.0150, Subp. 2(B)]
MN0069795	Met Council - East Bethel Water Reclamation Facility	
		Special Requirements
	6.17.1	Annual Report. The Permittee shall submit an Effluent Reuse Annual Report by January 21 of each year following permit issuance. The report shall include but not be limited to: a) Total amount of water reused, including the annual, monthly and daily volume of reused wastewater at each location; b) Inventory of sites where reused wastewater was used, including how the water was used, the locations (including a map, if appropriate), the average number of persons estimated as being served on a daily basis, and the persons responsible for the reclaimed wastewater at each site; c) Any agreements between the Permittee and recycled wastewater user(s) that define the responsibilities for meeting the requirements of this chapter at the reuse site (if appropriate); d) Summary of the quality of reused wastewater; e) Description of public notification and/or public information programs; f) Records of operational problems and equipment breakdowns, and any corrective and

		<p>preventative actions taken as a result; and g) Reasons for noncompliance with effluent limitations, if appropriate.</p> <p>The Permittee shall submit a report : Due by 21 days after the end of each calendar year following permit issuance. [Minn. R. 7001]</p>
		Pretreatment: Delegated Requirements
6.18.2		<p>The Permittee shall submit a pretreatment annual report : Due by March 31 of each year following permit issuance. The Permittee may continue to submit one Pretreatment Annual Report that includes all of their wastewater treatment facilities. [Minn. R. 7049]</p>
		Biosolids: Septage Transfer
6.19.3		<p>The Permittee shall submit a biosolids annual report : Due annually, by the 31st of December on a form provided by or approved by the MPCA. The report shall include the requirements in Minnesota Rules, part 7041.1700. [Minn. R. 7041.1700]</p>
		Total Facility Requirements (SDS)
6.20.4		<p>Permit Reissuance. If the Permittee desires to continue permit coverage beyond the date of permit expiration, the Permittee shall submit an application for permit reissuance : Due by 180 days prior to permit expiration. If the Permittee does not intend to continue the activities authorized by this permit after the expiration date of this permit, the Permittee shall notify the MPCA in writing at least 180 days before permit expiration.</p> <p>If the Permittee has submitted a timely application for permit reissuance, the Permittee may continue to conduct the activities authorized by this permit, in compliance with the requirements of this permit, until the MPCA takes final action on the application, unless the MPCA determines any of the following (Minn. R. 7001.0040 and 7001.0160):</p> <ol style="list-style-type: none"> a. The Permittee is not in substantial compliance with the requirements of this permit, or with a stipulation agreement or compliance schedule designed to bring the Permittee into compliance with this permit; b. The MPCA, as a result of an action or failure to act by the Permittee, has been unable to take final action on the application on or before the expiration date of the permit; c. The Permittee has submitted an application with major deficiencies or has failed to properly supplement the application in a timely manner after being informed of deficiencies. [Minn. R. 7001.0160]

7. Limits and monitoring

Subject item	Parameter	Discharge limitations						Monitoring requirements				Notes
		Quantity /Loading avg.	Quantity /Loading max.	Quantity /Loading units	Quality /Conc. min.	Quality /Conc. avg.	Quality /Conc. max.	Quality / Conc. units	Frequency	Sample type	Effective period	
GW 001 MW - A1 (NE Corner - Subsurface Site A)	Elevation of GW Relative to Mean Sea Level		Monitor only. instantaneous maximum	feet					once per month	Measurement, Instantaneous	Apr, Jul, Oct	
GW 001 MW - A1 (NE Corner - Subsurface Site A)	Nitrite Plus Nitrate, Total (as N)						Monitor only. calendar month maximum	milligrams per liter	once per month	Grab	Apr, Jul, Oct	
GW 001 MW - A1 (NE Corner - Subsurface Site A)	Nitrogen, Ammonia, Total (as N)						Monitor only. calendar month maximum	milligrams per liter	once per month	Grab	Apr, Jul, Oct	
GW 001 MW - A1 (NE Corner - Subsurface Site A)	Nitrogen, Kjeldahl, Total						Monitor only. calendar month maximum	milligrams per liter	once per month	Grab	Apr, Jul, Oct	
GW 001 MW - A1 (NE Corner - Subsurface Site A)	Phosphorus, Total (as P)						Monitor only. calendar month maximum	milligrams per liter	once per month	Grab	Apr, Jul, Oct	
GW 002 MW - A2 (SW Corner - Subsurface Site A)	Elevation of GW Relative to Mean Sea Level		Monitor only. instantaneous maximum	feet					once per month	Measurement, Instantaneous	Apr, Jul, Oct	
GW 002 MW - A2 (SW Corner - Subsurface Site A)	Nitrite Plus Nitrate, Total (as N)						Monitor only. calendar month maximum	milligrams per liter	once per month	Grab	Apr, Jul, Oct	
GW 002 MW - A2 (SW Corner - Subsurface Site A)	Nitrogen, Ammonia, Total (as N)						Monitor only. calendar month maximum	milligrams per liter	once per month	Grab	Apr, Jul, Oct	

Subject item	Parameter	Discharge limitations							Monitoring requirements			Notes
		Quantity /Loading avg.	Quantity /Loading max.	Quantity /Loading units	Quality /Conc. min.	Quality /Conc. avg.	Quality /Conc. max.	Quality/ Conc. units	Frequency	Sample type	Effective period	
GW 002 MW - A2 (SW Corner - Subsurface Site A)	Nitrogen, Kjeldahl, Total						Monitor only. calendar month maximum	milligrams per liter	once per month	Grab	Apr, Jul, Oct	
GW 002 MW - A2 (SW Corner - Subsurface Site A)	Phosphorus, Total (as P)						Monitor only. calendar month maximum	milligrams per liter	once per month	Grab	Apr, Jul, Oct	
GW 003 MW - A3 (NW Corner - Subsurface Site A)	Elevation of GW Relative to Mean Sea Level		Monitor only. instantaneous maximum	feet					once per month	Measurement, Instantaneous	Apr, Jul, Oct	
GW 003 MW - A3 (NW Corner - Subsurface Site A)	Nitrite Plus Nitrate, Total (as N)						Monitor only. calendar month maximum	milligrams per liter	once per month	Grab	Apr, Jul, Oct	
GW 003 MW - A3 (NW Corner - Subsurface Site A)	Nitrogen, Ammonia, Total (as N)						Monitor only. calendar month maximum	milligrams per liter	once per month	Grab	Apr, Jul, Oct	
GW 003 MW - A3 (NW Corner - Subsurface Site A)	Nitrogen, Kjeldahl, Total						Monitor only. calendar month maximum	milligrams per liter	once per month	Grab	Apr, Jul, Oct	
GW 003 MW - A3 (NW Corner - Subsurface Site A)	Phosphorus, Total (as P)						Monitor only. calendar month maximum	milligrams per liter	once per month	Grab	Apr, Jul, Oct	
GW 004 MW - A4 (SE Corner - Subsurface Site A)	Elevation of GW Relative to Mean Sea Level		Monitor only. instantaneous maximum	feet					once per month	Measurement, Instantaneous	Apr, Jul, Oct	
GW 004 MW - A4 (SE Corner - Subsurface Site A)	Nitrite Plus Nitrate, Total (as N)						Monitor only. calendar month maximum	milligrams per liter	once per month	Grab	Apr, Jul, Oct	

Subject item	Parameter	Discharge limitations							Monitoring requirements			Notes
		Quantity /Loading avg.	Quantity /Loading max.	Quantity /Loading units	Quality /Conc. min.	Quality /Conc. avg.	Quality /Conc. max.	Quality / Conc. units	Frequency	Sample type	Effective period	
GW 004 MW - A4 (SE Corner - Subsurface Site A)	Nitrogen, Ammonia, Total (as N)						Monitor only. calendar month maximum	milligrams per liter	once per month	Grab	Apr, Jul, Oct	
GW 004 MW - A4 (SE Corner - Subsurface Site A)	Nitrogen, Kjeldahl, Total						Monitor only. calendar month maximum	milligrams per liter	once per month	Grab	Apr, Jul, Oct	
GW 004 MW - A4 (SE Corner - Subsurface Site A)	Phosphorus, Total (as P)						Monitor only. calendar month maximum	milligrams per liter	once per month	Grab	Apr, Jul, Oct	
GW 005 MW - E1 (NE Corner - Subsurface Site E)	Elevation of GW Relative to Mean Sea Level		Monitor only. instantaneous maximum	feet					once per month	Measurement, Instantaneous	Apr, Jul, Oct	
GW 005 MW - E1 (NE Corner - Subsurface Site E)	Nitrite Plus Nitrate, Total (as N)						Monitor only. calendar month maximum	milligrams per liter	once per month	Grab	Apr, Jul, Oct	
GW 005 MW - E1 (NE Corner - Subsurface Site E)	Nitrogen, Ammonia, Total (as N)						Monitor only. calendar month maximum	milligrams per liter	once per month	Grab	Apr, Jul, Oct	
GW 005 MW - E1 (NE Corner - Subsurface Site E)	Nitrogen, Kjeldahl, Total						Monitor only. calendar month maximum	milligrams per liter	once per month	Grab	Apr, Jul, Oct	
GW 005 MW - E1 (NE Corner - Subsurface Site E)	Phosphorus, Total (as P)						Monitor only. calendar month maximum	milligrams per liter	once per month	Grab	Apr, Jul, Oct	
GW 006 MW - E2 (SW Corner - Subsurface Site E)	Elevation of GW Relative to Mean Sea Level		Monitor only. instantaneous maximum	feet					once per month	Measurement, Instantaneous	Apr, Jul, Oct	

Subject item	Parameter	Discharge limitations							Monitoring requirements			Notes
		Quantity /Loading avg.	Quantity /Loading max.	Quantity /Loading units	Quality /Conc. min.	Quality /Conc. avg.	Quality /Conc. max.	Quality/ Conc. units	Frequency	Sample type	Effective period	
GW 006 MW - E2 (SW Corner - Subsurface Site E)	Nitrite Plus Nitrate, Total (as N)						Monitor only. calendar month maximum	milligrams per liter	once per month	Grab	Apr, Jul, Oct	
GW 006 MW - E2 (SW Corner - Subsurface Site E)	Nitrogen, Ammonia, Total (as N)						Monitor only. calendar month maximum	milligrams per liter	once per month	Grab	Apr, Jul, Oct	
GW 006 MW - E2 (SW Corner - Subsurface Site E)	Nitrogen, Kjeldahl, Total						Monitor only. calendar month maximum	milligrams per liter	once per month	Grab	Apr, Jul, Oct	
GW 006 MW - E2 (SW Corner - Subsurface Site E)	Phosphorus, Total (as P)						Monitor only. calendar month maximum	milligrams per liter	once per month	Grab	Apr, Jul, Oct	
GW 007 MW - E3 (North Side - Subsurface Site E)	Elevation of GW Relative to Mean Sea Level		Monitor only. instantaneous maximum	feet					once per month	Measurement, Instantaneous	Apr, Jul, Oct	
GW 007 MW - E3 (North Side - Subsurface Site E)	Nitrite Plus Nitrate, Total (as N)						Monitor only. calendar month maximum	milligrams per liter	once per month	Grab	Apr, Jul, Oct	
GW 007 MW - E3 (North Side - Subsurface Site E)	Nitrogen, Ammonia, Total (as N)						Monitor only. calendar month maximum	milligrams per liter	once per month	Grab	Apr, Jul, Oct	
GW 007 MW - E3 (North Side - Subsurface Site E)	Nitrogen, Kjeldahl, Total						Monitor only. calendar month maximum	milligrams per liter	once per month	Grab	Apr, Jul, Oct	
GW 007 MW - E3 (North Side - Subsurface Site E)	Phosphorus, Total (as P)						Monitor only. calendar month maximum	milligrams per liter	once per month	Grab	Apr, Jul, Oct	

Subject item	Parameter	Discharge limitations							Monitoring requirements			Notes
		Quantity /Loading avg.	Quantity /Loading max.	Quantity /Loading units	Quality /Conc. min.	Quality /Conc. avg.	Quality /Conc. max.	Quality /Conc. units	Frequency	Sample type	Effective period	
GW 008 MW - E4 (South Side - Subsurface Site E)	Elevation of GW Relative to Mean Sea Level		Monitor only. instantaneous maximum	feet					once per month	Measurement, Instantaneous	Apr, Jul, Oct	
GW 008 MW - E4 (South Side - Subsurface Site E)	Nitrite Plus Nitrate, Total (as N)						Monitor only. calendar month maximum	milligrams per liter	once per month	Grab	Apr, Jul, Oct	
GW 008 MW - E4 (South Side - Subsurface Site E)	Nitrogen, Ammonia, Total (as N)						Monitor only. calendar month maximum	milligrams per liter	once per month	Grab	Apr, Jul, Oct	
GW 008 MW - E4 (South Side - Subsurface Site E)	Nitrogen, Kjeldahl, Total						Monitor only. calendar month maximum	milligrams per liter	once per month	Grab	Apr, Jul, Oct	
GW 008 MW - E4 (South Side - Subsurface Site E)	Phosphorus, Total (as P)						Monitor only. calendar month maximum	milligrams per liter	once per month	Grab	Apr, Jul, Oct	
GW 009 Subsurface Site A	Elevation of GW Relative to Mean Sea Level		Monitor only. instantaneous maximum	feet					once per month	Measurement, Instantaneous	Apr, Jul, Oct	
GW 010 Subsurface Site E	Elevation of GW Relative to Mean Sea Level		Monitor only. instantaneous maximum	feet					once per month	Measurement, Instantaneous	Apr, Jul, Oct	
WS 001 Influent to Mechanical Facility	BOD, Carbonaceous 05 Day (20 Deg C)					Monitor only. calendar month average	Monitor only. calendar month maximum	milligrams per liter	once per week	24-Hour Flow Composite	Jan-Dec	
WS 001 Influent to Mechanical Facility	Flow		Monitor only. calendar month total	million gallons		Monitor only. calendar month average	Monitor only. calendar month maximum	million gallons per day	once per day	Measurement, Continuous	Jan-Dec	

Subject item	Parameter	Discharge limitations							Monitoring requirements			Notes
		Quantity /Loading avg.	Quantity /Loading max.	Quantity /Loading units	Quality /Conc. min.	Quality /Conc. avg.	Quality /Conc. max.	Quality /Conc. units	Frequency	Sample type	Effective period	
WS 001 Influent to Mechanical Facility	pH				Monitor only. calendar month minimum		Monitor only. calendar month maximum	standard units	3 times per week	Grab	Jan-Dec	
WS 001 Influent to Mechanical Facility	Phosphorus, Total (as P)					Monitor only. calendar month average		milligrams per liter	once per week	24-Hour Flow Composite	Jan-Dec	
WS 001 Influent to Mechanical Facility	Precipitation		Monitor only. calendar month total	inches					once per day	Measurement	Jan-Dec	
WS 001 Influent to Mechanical Facility	Solids, Total Suspended (TSS)					Monitor only. calendar month average	Monitor only. calendar month maximum	milligrams per liter	once per week	24-Hour Flow Composite	Jan-Dec	
WS 002 Effluent to Subsurface Sites	BOD, Carbonaceous 05 Day (20 Deg C)					25 calendar month average	45 maximum calendar week average	milligrams per liter	once per week	24-Hour Flow Composite	Jan-Dec	
WS 002 Effluent to Subsurface Sites	Chloride, Total					Monitor only. calendar month average		milligrams per liter	once per week	24-Hour Flow Composite	Jan-Dec	
WS 002 Effluent to Subsurface Sites	Fecal Coliform, MPN or Membrane Filter 44.5C					200 calendar month geometric mean		organisms per 100 milliliter	3 times per week	Grab	Jan-Dec	
WS 002 Effluent to Subsurface Sites	Flow		Monitor only. calendar year to date total	million gallons					once per month	Calculation	Jan-Dec	
WS 002 Effluent to Subsurface Sites	Flow		Monitor only. calendar month total	million gallons		Monitor only. calendar month average	Monitor only. calendar month maximum	million gallons per day	once per day	Measurement, Continuous	Jan-Dec	

Subject item	Parameter	Discharge limitations							Monitoring requirements			Notes
		Quantity /Loading avg.	Quantity /Loading max.	Quantity /Loading units	Quality /Conc. min.	Quality /Conc. avg.	Quality /Conc. max.	Quality /Conc. units	Frequency	Sample type	Effective period	
WS 002 Effluent to Subsurface Sites	Nitrite Plus Nitrate, Total (as N)					Monitor only. calendar month average		milligrams per liter	once per week	24-Hour Flow Composite	Jan-Dec	
WS 002 Effluent to Subsurface Sites	Nitrogen, Ammonia, Total (as N)					Monitor only. calendar month average		milligrams per liter	once per week	24-Hour Flow Composite	Jan-Dec	
WS 002 Effluent to Subsurface Sites	Nitrogen, Kjeldahl, Total					Monitor only. calendar month average		milligrams per liter	once per week	24-Hour Flow Composite	Jan-Dec	
WS 002 Effluent to Subsurface Sites	Nitrogen, Total (as N)					10.0 calendar month average		milligrams per liter	once per week	Calculation	Jan-Dec	
WS 002 Effluent to Subsurface Sites	pH				6.0 calendar month minimum		9.0 calendar month maximum	standard units	3 times per week	Grab	Jan-Dec	
WS 002 Effluent to Subsurface Sites	Phosphorus, Total (as P)					1.0 calendar month average		milligrams per liter	once per week	24-Hour Flow Composite	Jan-Dec	
WS 002 Effluent to Subsurface Sites	Solids, Total Suspended (TSS)					30 calendar month average	45 maximum calendar week average	milligrams per liter	once per week	24-Hour Flow Composite	Jan-Dec	
WS 003 Disposal to Subsurface Site A	Flow		Monitor only. calendar month total	million gallons		0.41 calendar month average	Monitor only. calendar month maximum	million gallons per day	once per day	Measurement, Continuous	Jan-Dec	
WS 003 Disposal to Subsurface Site A	Flow		Monitor only. calendar year to date total	million gallons					once per month	Calculation	Jan-Dec	
WS 004 Disposal to Subsurface Site E	Flow		Monitor only. calendar month total	million gallons		0.41 calendar month average	Monitor only. calendar month maximum	million gallons per day	once per day	Measurement, Continuous	Jan-Dec	

Subject item	Parameter	Discharge limitations							Monitoring requirements			Notes
		Quantity /Loading avg.	Quantity /Loading max.	Quantity /Loading units	Quality /Conc. min.	Quality /Conc. avg.	Quality /Conc. max.	Quality /Conc. units	Frequency	Sample type	Effective period	
WS 004 Disposal to Subsurface Site E	Flow		Monitor only. calendar year to date total	million gallons					once per month	Calculation	Jan-Dec	
WS 005 Reuse Effluent, Disinfected Tertiary 2.2	BOD, Carbonaceous 05 Day (20 Deg C)					25 calendar month average	45 maximum calendar week average	milligrams per liter	once per week	24-Hour Flow Composite	Jan-Dec	
WS 005 Reuse Effluent, Disinfected Tertiary 2.2	Chloride, Total					Monitor only. calendar month average		milligrams per liter	once per week	24-Hour Flow Composite	Jan-Dec	
WS 005 Reuse Effluent, Disinfected Tertiary 2.2	Coliform, Total						240 daily maximum	organisms per 100 milliliter	once per day	Grab	Jan-Dec	
WS 005 Reuse Effluent, Disinfected Tertiary 2.2	Coliform, Total		1 calendar month total	# of samples >23 organisms per 100 mL			2.2 max 7- sample moving median	organisms per 100 milliliter	once per month	Calculation	Jan-Dec	
WS 005 Reuse Effluent, Disinfected Tertiary 2.2	Flow		Monitor only. calendar year to date total	million gallons					once per month	Calculation	Jan-Dec	
WS 005 Reuse Effluent, Disinfected Tertiary 2.2	Flow		Monitor only. calendar month total	million gallons		Monitor only. calendar month average	Monitor only. calendar month maximum	million gallons per day	once per day	Measurement, Continuous	Jan-Dec	
WS 005 Reuse Effluent, Disinfected Tertiary 2.2	Nitrite Plus Nitrate, Total (as N)					Monitor only. calendar month average		milligrams per liter	once per week	24-Hour Flow Composite	Jan-Dec	
WS 005 Reuse Effluent, Disinfected Tertiary 2.2	Nitrogen, Ammonia, Total (as N)					Monitor only. calendar month average		milligrams per liter	once per week	24-Hour Flow Composite	Jan-Dec	

Subject item	Parameter	Discharge limitations							Monitoring requirements			Notes
		Quantity /Loading avg.	Quantity /Loading max.	Quantity /Loading units	Quality /Conc. min.	Quality /Conc. avg.	Quality /Conc. max.	Quality /Conc. units	Frequency	Sample type	Effective period	
WS 005 Reuse Effluent, Disinfected Tertiary 2.2	Nitrogen, Kjeldahl, Total					Monitor only. calendar month average		milligrams per liter	once per week	24-Hour Flow Composite	Jan-Dec	
WS 005 Reuse Effluent, Disinfected Tertiary 2.2	Nitrogen, Total (as N)					10.0 calendar month average		milligrams per liter	once per week	Calculation	Jan-Dec	
WS 005 Reuse Effluent, Disinfected Tertiary 2.2	pH				6.0 calendar month minimum		9.0 calendar month maximum	standard units	once per day	Grab	Jan-Dec	
WS 005 Reuse Effluent, Disinfected Tertiary 2.2	Phosphorus, Total (as P)					1.0 calendar month average		milligrams per liter	once per week	24-Hour Flow Composite	Jan-Dec	
WS 005 Reuse Effluent, Disinfected Tertiary 2.2	Solids, Total Suspended (TSS)					30 calendar month average	45 maximum calendar week average	milligrams per liter	once per week	24-Hour Flow Composite	Jan-Dec	
WS 005 Reuse Effluent, Disinfected Tertiary 2.2	Turbidity					2 daily average	10 daily maximum	nephelometric turbidity units (NTU)	6 times per day	Measurement, Continuous	Jan-Dec	
WS 006 Reuse Effluent, Disinfected Secondary 23	BOD, Carbonaceous 05 Day (20 Deg C)					25 calendar month average	45 maximum calendar week average	milligrams per liter	once per week	24-Hour Flow Composite	Jan-Dec	
WS 006 Reuse Effluent, Disinfected Secondary 23	Chloride, Total					Monitor only. calendar month average		milligrams per liter	once per week	24-Hour Flow Composite	Jan-Dec	
WS 006 Reuse Effluent, Disinfected Secondary 23	Coliform, Total						240 daily maximum	organisms per 100 milliliter	once per day	Grab	Jan-Dec	

Subject item	Parameter	Discharge limitations							Monitoring requirements			Notes
		Quantity /Loading avg.	Quantity /Loading max.	Quantity /Loading units	Quality /Conc. min.	Quality /Conc. avg.	Quality /Conc. max.	Quality/ Conc. units	Frequency	Sample type	Effective period	
WS 006 Reuse Effluent, Disinfected Secondary 23	Coliform, Total						23 max 7-sample moving median	organisms per 100 milliliter	once per month	Calculation	Jan-Dec	
WS 006 Reuse Effluent, Disinfected Secondary 23	Flow		Monitor only. calendar year to date total	million gallons					once per month	Calculation	Jan-Dec	
WS 006 Reuse Effluent, Disinfected Secondary 23	Flow		Monitor only. calendar month total	million gallons		Monitor only. calendar month average	Monitor only. calendar month maximum	million gallons per day	once per day	Measurement, Continuous	Jan-Dec	
WS 006 Reuse Effluent, Disinfected Secondary 23	Nitrite Plus Nitrate, Total (as N)					Monitor only. calendar month average		milligrams per liter	once per week	24-Hour Flow Composite	Jan-Dec	
WS 006 Reuse Effluent, Disinfected Secondary 23	Nitrogen, Ammonia, Total (as N)					Monitor only. calendar month average		milligrams per liter	once per week	24-Hour Flow Composite	Jan-Dec	
WS 006 Reuse Effluent, Disinfected Secondary 23	Nitrogen, Kjeldahl, Total					Monitor only. calendar month average		milligrams per liter	once per week	24-Hour Flow Composite	Jan-Dec	
WS 006 Reuse Effluent, Disinfected Secondary 23	Nitrogen, Total (as N)					10.0 calendar month average		milligrams per liter	once per week	Calculation	Jan-Dec	
WS 006 Reuse Effluent, Disinfected Secondary 23	pH				6.0 calendar month minimum		9.0 calendar month maximum	standard units	once per day	Grab	Jan-Dec	
WS 006 Reuse Effluent, Disinfected Secondary 23	Phosphorus, Total (as P)					1.0 calendar month average		milligrams per liter	once per week	24-Hour Flow Composite	Jan-Dec	

Subject item	Parameter	Discharge limitations							Monitoring requirements			Notes
		Quantity /Loading avg.	Quantity /Loading max.	Quantity /Loading units	Quality /Conc. min.	Quality /Conc. avg.	Quality /Conc. max.	Quality / Conc. units	Frequency	Sample type	Effective period	
WS 006 Reuse Effluent, Disinfected Secondary 23	Solids, Total Suspended (TSS)					30 calendar month average	45 maximum calendar week average	milligrams per liter	once per week	24-Hour Flow Composite	Jan-Dec	

DRAFT