

## 2019 Modification to Lower Minnesota River Dissolved Oxygen Total Maximum Daily Load Report

### Overview

TMDL Project Name	<a href="#">Lower Minnesota River Dissolved Oxygen TMDL</a>
Date of EPA TMDL Approval	September 28, 2004
Public Notice Dates	May 6, 2019 through June 5, 2019
MPCA Approval Date for Modification	June 5, 2019
TMDL segment AUID and pollutant which require modification	07020012-505 – phosphorus TMDL modification
TMDL Tables in final TMDL document which are being modified	Table 6.1: Total phosphorus allocation table by major watershed for the Minnesota River summer low flow critical period Table 6.2: Total average daily phosphorus allocation by major watershed for the Minnesota River summer low flow critical period

#### **What is being changed from the final Total Maximum Daily Load (TMDL) to the modified TMDL?**

The Minnesota Pollution Control Agency (MPCA) is making adjustments to stormwater wasteload allocations (WLAs) to account for new regulated-Municipal Separate Storm Sewer Systems (MS4s). There are six new regulated-MS4s within the TMDL project area, Blue Earth County (Permit #MS400276), Eagle Lake City (Permit #MS400284), Mankato Township (Permit #MS400297), Skyline City (Permit #MS400292), South Bend Township (Permit #MS400299), and Minnesota State University Mankato (Permit #MS400279) (Table 1; Table 2). There is also a new 2010 Census Defined Urbanized Area in this TMDL project area, so the Minnesota Department of Transportation (MnDOT) Outstate District (Permit #MS400180) is also a new regulated MS4 in this area. When the TMDLs were approved on September 28, 2004, Blue Earth County, Eagle Lake City, Mankato Township, Skyline City, South Bend Township, and MnDOT Outstate District were unregulated and the areas associated with these cities, counties, townships, and MnDOT were assigned to the load allocation (LA). Now that these areas are regulated-MS4s, the LA assigned to them is being transferred to the MS4 WLA. The adjustments will not change the approved overall total loading capacities of the TMDLs.

**Table 1. Current and new regulated-MS4s within TMDL subwatershed.**

AUID	Reach Name	Current MS4s with a WLA	New MS4s	Impairment
07020012-505	Minnesota River	Fairmont City Mankato City Marshall City Montevideo City New Ulm City North Mankato City Redwood Falls City St. Peter City Waseca City Willmar City	Blue Earth County Eagle Lake City Mankato Township Skyline City South Bend Township MN State University – Mankato MnDOT Outstate District	Low Dissolved Oxygen

**Table 2. Regulated-MS4s and MS4 Permit Numbers**

Regulated MS4	MS4 Permit #
Blue Earth County	MS400276
Eagle Lake City	MS400284
Fairmont City	MS400239
Mankato City	MS400226
Mankato Township	MS400297
Marshall City	MS400241
MN State University - Mankato	MS400279
MnDOT Outstate	MS400180
Montevideo City	MS400261
New Ulm City	MS400228
North Mankato City	MS400229
Redwood Falls City	MS400236
Skyline City	MS400292
South Bend Township	MS400299
St. Peter City	MS400245
Waseca City	MS400258
Willmar City	MS400272

**Explanation of modifications:**

The MS4s above were not regulated under the MS4 permit when the TMDL was completed in 2004. The MS4s listed above are now regulated-MS4s and the permitted area needs to be accounted for in the TMDL WLAs for the TMDL segments listed above. The MPCA is proposing the following modifications:

**Minnesota River, AUID 07020012-505**

The MPCA is shifting 11.7 pounds/day of phosphorus from the LA (Other Stormwater) to the MS4 WLA for the MS4s listed above (Modified Table 6.1; Modified Table 6.2).

## Maps

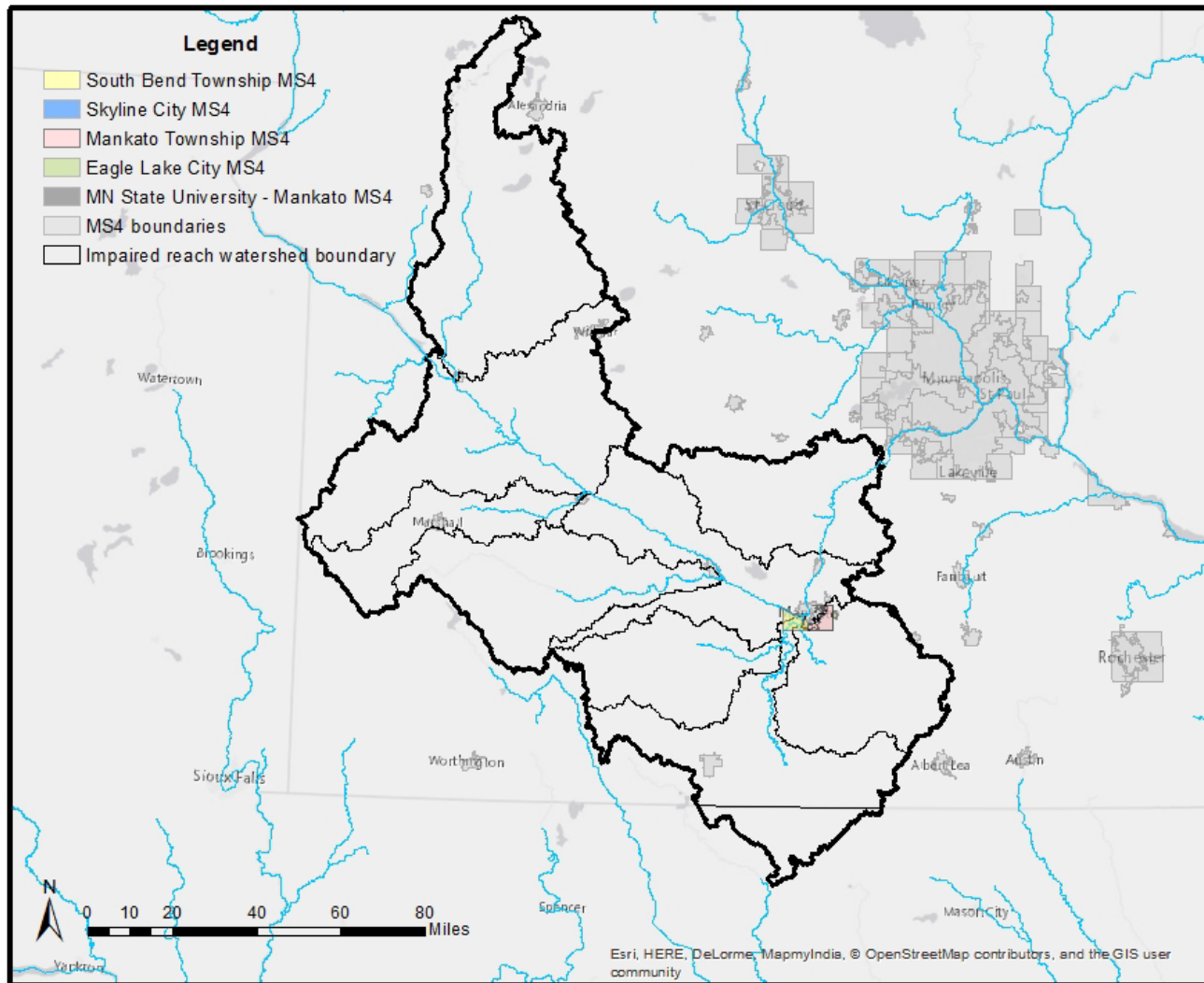


Figure 1. Impaired dissolved oxygen reach Minnesota River (AUID 07020012-505) TMDL Subwatershed and regulated MS4 areas.

\*Blue Earth County MS4 and MnDOT Outstate MS4 ROWs are not shown.

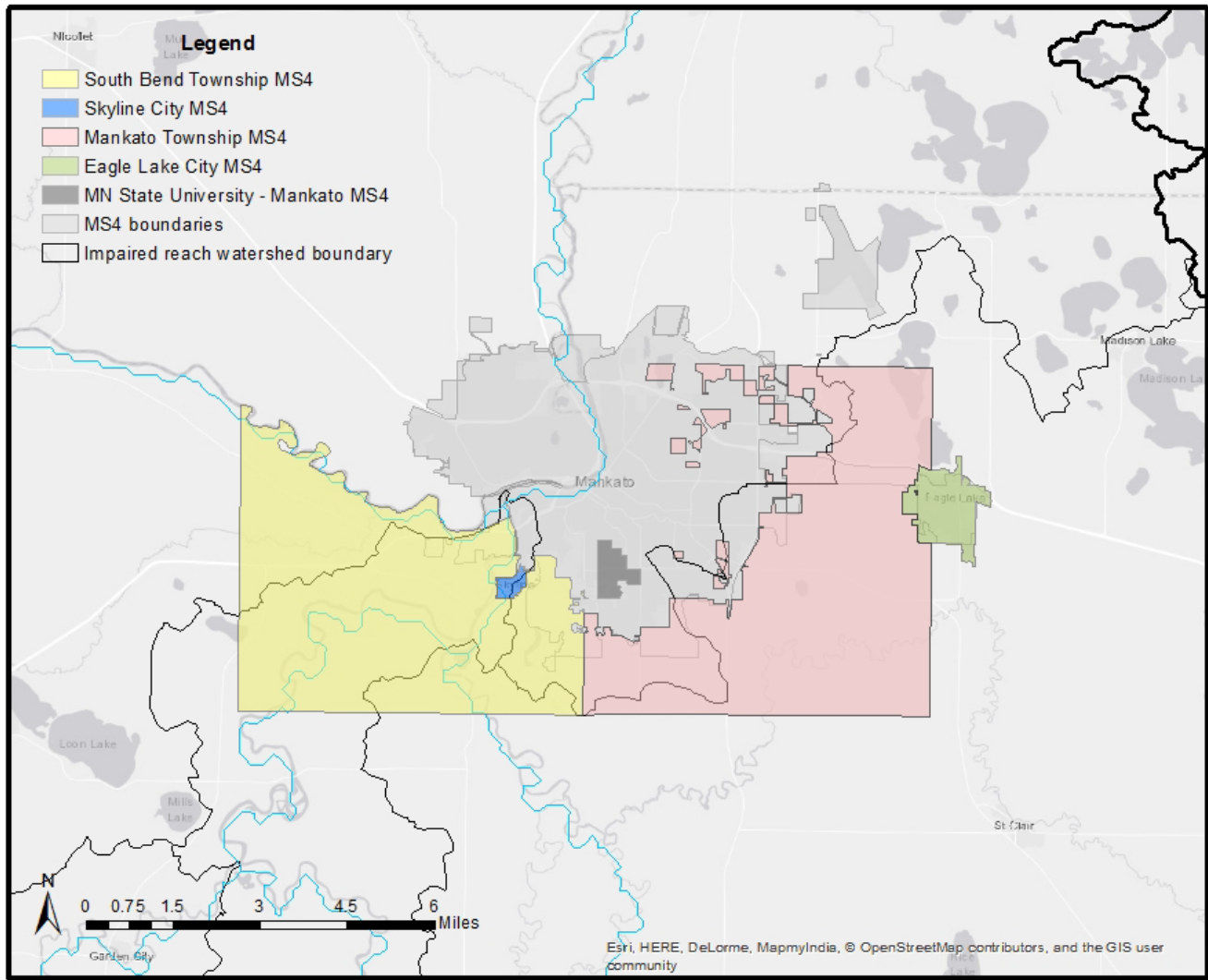


Figure 2. Impaired dissolved oxygen reach Minnesota River (AUID 07020012-505) TMDL Subwatershed and regulated MS4 areas  
 \*Blue Earth County MS4 and MnDOT Outstate MS4 ROWs are not shown.

## Tables

Original excerpt from Table 6.1 Total phosphorus (lbs/61 days) allocation table by major watershed for the Minnesota River summer low flow critical period (August and September 1988 Hydrology) (pg. 30).

	Ag	Non-compliant ISTS	Under-treated communities	Point Sources	NPDES Storm-water	Other storm-water	Other Natural and Back-ground Sources	Total
TOTAL	10,907	341	268	23,258	1,863	8,999	233	45,869
	23.8%	0.7%	0.6%	50.7%	4.1%	19.6%	0.5%	

Modified excerpt from Table 6.1 Total phosphorus (lbs/61 days) allocation table by major watershed for the Minnesota River summer low flow critical period (August and September 1988 Hydrology) (modifications in yellow).

	Ag	Non-compliant ISTS	Under-treated communities	Point Sources	NPDES Storm-water	Other storm-water	Other Natural and Back-ground Sources	Total
TOTAL	10,907	341	268	23,258	2,577	8,285	233	45,869
	23.8%	0.7%	0.6%	50.7%	5.6%	18.1%	0.5%	

Original excerpt from Table 6.2 Total average daily phosphorus allocation by major watershed for the Minnesota River summer low flow critical period (generated loading) (pg. 31).

	Ag	Non-compliant ISTS	Under-treated communities	Point Sources	NPDES Storm-water	Other storm-water	Other Natural and Back-ground Sources	Total
TOTAL	178.8	5.6	4.4	381.3	30.5	147.5	3.8	752.0
	23.8%	0.7%	0.6%	50.7%	4.1%	19.6%	0.5%	

Modified excerpt from Table 6.2 Total average daily phosphorus allocation by major watershed for the Minnesota River summer low flow critical period (generated loading) (modifications highlighted in yellow).

	Ag	Non-compliant ISTS	Under-treated communities	Point Sources	NPDES Storm-water	Other storm-water	Other Natural and Back-ground Sources	Total
TOTAL	178.8	5.6	4.4	381.3	42.2	135.8	3.8	752.0
	23.8%	0.7%	0.6%	50.7%	5.6%	18.1%	0.5%	

## **Implementation**

**Given the modification described, are there any changes to Stormwater Pollution Prevention Plan (SWPPP) to account for the modified WLAs?**

The MS4s listed above will be required to submit an updated SWPPP when the new MS4 permit becomes effective in late 2019. At that time, the MS4s listed above will be required to account for the phosphorus impaired reach above.

**Will the SWPPPs be updated to include the new information included in the modification? If yes, when will the SWPPPs be updated?**

The SWPPPs will be updated to include the new information in the modification when the new MS4 permit becomes effective in late 2019.