



Minnesota Pollution Control Agency

STATE OF MINNESOTA

Minnesota Pollution Control Agency

**MUNICIPAL DIVISION
PUBLIC NOTICE OF INTENT TO REISSUE
NATIONAL POLLUTANT DISCHARGE ELIMINATION SYSTEM (NPDES)/
STATE DISPOSAL SYSTEM (SDS) PERMIT MN0023396**

Public Comment Period Begins: May 14, 2013
Public Comment Period Ends: June 13, 2013

Current Permit Issued: October 21, 2010
Current Permit Expiration Date: August 31, 2015

Name and Address of Permittee:

City of Felton
PO Box 568
Felton, MN 56536-0568

Facility Name and Location:

Felton Wastewater Treatment Facility
County Highway 34
T142N, R46W, Section 28
Felton Township, Clay County, Minnesota

Receiving Water: Unnamed Ditch (Class 2B, 3C, 4A, 4B, 5, 6 Water)

Description of Permitted Facility:

The Felton Wastewater Treatment Facility (Facility) is located in the SE ¼ of Section 28, Township 142 North, Range 46 West, Felton Township, Clay County, Minnesota. This is a Class D Facility.

Major components of the Existing Facility include:

- 1 Primary Stabilization Pond - 3.2 acres, measured at the 3-foot operating depth (To Be Eliminated)
- 1 Secondary Stabilization Pond - 1.1 acres, measured at the 3-foot operating depth (To Be Eliminated)

The existing Facility consists of one lift station, approximately 2,000 feet of 4-inch force main and a 2-cell stabilization pond system. The Facility has a controlled discharge (SD001) to an unnamed ditch (Class 2B, 3C, 4A, 4B, 5, 6 Water). The Facility is designed to treat an average wet weather flow (AWWF) of 22,000 gallons per day (gpd) with a five-day carbonaceous biochemical oxygen demand (CBOD₅) strength of 300 milligrams per liter (mg/L). The pond system provides a total detention time of 220 days at design flow.

The existing Facility is further described in plans and specifications on file with the MPCA, prepared by Harry E.

Adams, Consulting Engineering, St. Paul, Minnesota, dated October 4, 1966.

Major components of the Proposed Facility include:

- 2 Primary Stabilization Ponds - 2.57 acres each, measured at the 4-foot operating depth (Proposed)
- 1 Secondary Stabilization Pond - 3.34 acres, measured at the 4-foot operating depth (Proposed)

The proposed Facility consists of approximately 2,000 feet of 4-inch force main and a 3-cell stabilization pond system. The City of Felton plans to reconstruct and line the existing primary pond and use it as the new secondary pond. The existing secondary pond will be eliminated and two new secondary ponds constructed at the same location. The Facility will continue to have a controlled discharge (SD001) to the unnamed ditch (Class 2B, 3C, 4A, 4B, 5, 6 Water). The Facility will be designed to treat an AWWF of 52,500 gpd with a CBOD₅ strength of 135 mg/L. The new pond system will provide a total detention time of 210 days at design flow.

The proposed Facility is further described in plans and specifications on file with the MPCA, prepared by Moore Engineering, Inc., West Fargo, North Dakota, dated December 28, 2012.

In accordance with MPCA rules regarding nondegradation for all waters that are not Outstanding Resource Value Waters, nondegradation review is required for any new or expanded significant discharge (Minn. R. 7050.0185). A significant discharge is 1) a new discharge (not in existence before January 1, 1988) that is greater than 200,000 gpd to any water other than a Class 7 water or 2) an expanded discharge that expands by greater than 200,000 gpd that discharges to any water other than a Class 7 water or 3) a new or expanded discharge containing any toxic pollutant at a mass loading rate likely to increase the concentration of the toxicant in the receiving water by greater than one percent over the baseline quality. The flow rate used to determine significance is the design average wet weather flow. The January 1, 1988, design average wet weather flow for this facility is 22,000 gpd.

This Permit also complies with Minn. R. 7053.0275 regarding anti-backsliding.

Any point source discharger of sewage, industrial, or other wastes for which a NPDES permit has been issued by the MPCA that contains effluent limits more stringent than those that would be established by parts 7053.0215 to 7053.0265 shall continue to meet the effluent limits established by the permit, unless the permittee establishes that less stringent effluent limits are allowable pursuant to federal law, under section 402(o) of the Clean Water Act, United States Code, title 33, section 1342.

The location of the Facility is shown on the map on page 5.

Preliminary Determination on the Draft Permit

The MPCA Commissioner has made a preliminary determination to reissue this NPDES/SDS permit for a term of approximately five years. A draft permit is available for review at the MPCA office at the Detroit Lakes address below and on-line at <http://www.pca.state.mn.us/index.php/about-mpca/mpca-news/public-notice/public-notice.html>.

A copy of the draft permit will be mailed to you if the MPCA receives your written or oral request at this office. If you have questions about this draft permit or the Commissioner's preliminary determination, please contact Holly Christensen at 218-846-8104.

Written Comments

You may submit written comments on the conditions of the draft permit or on the Commissioner's preliminary determination. Written comments must include the following:

1. A statement of your interest in the permit application or the draft permit.
2. A statement of the action you wish the MPCA to take, including specific references to sections of the draft permit that you believe should be changed.
3. The reasons supporting your position, stated with sufficient specificity as to allow the Commissioner to investigate the merits of your position.

Petition for Public Informational Meeting

You also may request that the MPCA Commissioner hold a public informational meeting. A public informational meeting is an informal meeting that the MPCA may hold to solicit public comment and statements on matters before the MPCA, and to help clarify and resolve issues.

A petition requesting a public informational meeting must include the following information:

1. A statement identifying the matter of concern.
2. The information required under items 1 through 3 of "Written Comments," identified above.
3. A statement of the reasons the MPCA should hold a public informational meeting.
4. The issues that you would like the MPCA to address at the public informational meeting.

Petition for Contested Case Hearing

You also may submit a petition for a contested case hearing. A contested case hearing is a formal evidentiary hearing before an administrative law judge. In accordance with Minn. R. 7000.1900, the MPCA will grant a petition to hold a contested case hearing if it finds that: (1) there is a material issue of fact in dispute concerning the application or draft permit; (2) the MPCA has the jurisdiction to make a determination on the disputed material issue of fact; and (3) there is a reasonable basis underlying the disputed material issue of fact or facts such that the holding of the contested case hearing would allow the introduction of information that would aid the MPCA in resolving the disputed facts in making a final decision on the draft permit. A material issue of fact means a fact question, as distinguished from a policy question, whose resolution could have a direct bearing on a final MPCA decision.

A petition for a contested case hearing must include the following information:

1. A statement of reasons or proposed findings supporting the MPCA decision to hold a contested case hearing according to the criteria in Minn. R. 7000.1900, as discussed above.
2. A statement of the issues proposed to be addressed by a contested case hearing and the specific relief requested or resolution of the matter.

In addition and to the extent known, a petition for a contested case hearing should also include the following information:

1. A proposed list of prospective witnesses to be called, including experts, with a brief description of proposed testimony or summary of evidence to be presented at a contested case hearing.
2. A proposed list of publications, references, or studies to be introduced and relied upon at a contested case hearing.
3. An estimate of time required for you to present the matter at a contested case hearing.

MPCA Decision

You may submit a petition to the Commissioner requesting that the MPCA Citizens' Board (Board) consider the

permit issuance. To be considered timely, the petition must be received by the MPCA by 4:30 p.m. on the date the public comment period ends, identified on page 1 of this notice. Under the provisions of Minn. Stat. § 116.02, subd. 6(4), the decision whether to issue the permit and, if so, under what terms will be presented to the Board for decision if: (1) the Commissioner grants the petition requesting the matter be presented to the Board; (2) one or more Board members request to hear the matter before the time the Commissioner makes a final decision on the permit; or (3) a timely request for a contested case hearing is pending. You may participate in the activities of the Board as provided in Minn. R. 7000.0650.

The written comments, requests, and petitions submitted on or before the last day of the public comment period will be considered in the final decision on this permit. If the MPCA does not receive written comments, requests, or petitions during the public comment period, MPCA staff as authorized by the Board, will make the final decision on the draft permit.

Comments, petitions, and/or requests must be submitted in writing on or before the end date of the public comment period identified on page 1 of this notice to:

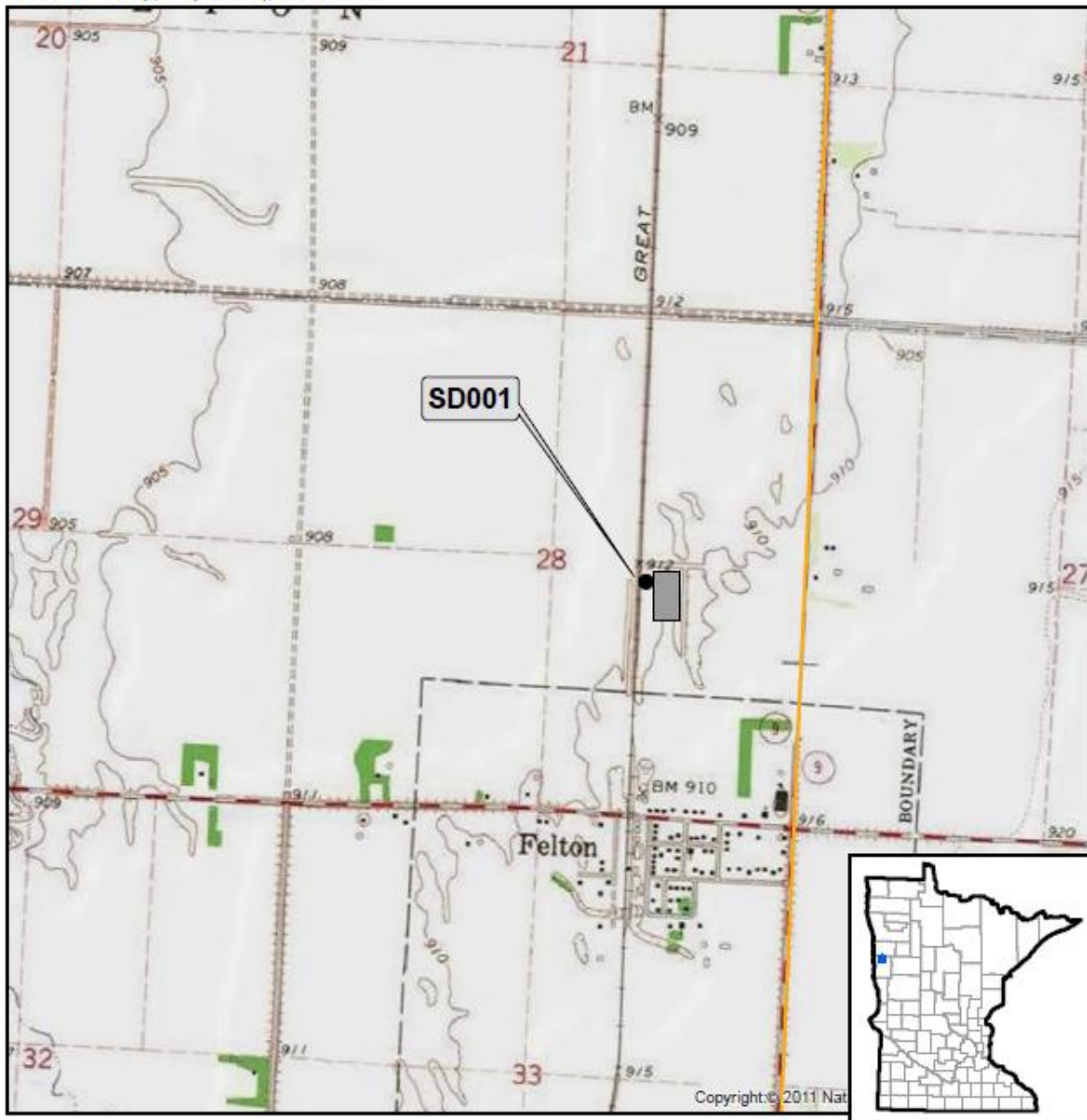
Holly Christensen
Minnesota Pollution Control Agency
714 Lake Avenue, Suite 220
Detroit Lakes, Minnesota 56501

Topographic Map of Permitted Facility

MN0023396: Felton Wastewater Treatment Facility

T142N, R46W, Section 28

Felton Township, Clay County, Minnesota



Map produced by: MPCA Staff, 01/11/13

Source: USGS Quad, Felton WWTF

Scale: 1:18,000

0 0.175 0.35 0.7 Miles

