



Minnesota Pollution Control Agency

STATE OF MINNESOTA

Minnesota Pollution Control Agency

INDUSTRIAL DIVISION
PUBLIC NOTICE OF INTENT TO REISSUE
NATIONAL POLLUTANT DISCHARGE ELIMINATION SYSTEM (NPDES)/
STATE DISPOSAL SYSTEM (SDS) PERMIT MN0060747

Public Comment Period Begins: November 27, 2012
Public Comment Period Ends: December 27, 2012

Current Permit Issued: October 12, 2007
Current Permit Expiration Date: September 30, 2012

Name and Address of Permittee:

LifeCore Biomedical LLC
3515 Lyman Blvd
Chaska MN 55318

Facility Name and Location:

LifeCore Biomedical LLC
3515 Lyman Blvd
T116N, R23W, Section 21,
Chaska, Carver County, Minnesota

Receiving Water: Big Woods (Upper Grace) Lake

Description of Permitted Facility

The LifeCore Biomedical LLC facility (Facility) is located at Northwest 1/4 of Northwest 1/4 of Section 21, Township 116 North, Range 23 West, at 3515 Lyman Boulevard, Chaska, Carver County, Minnesota. The principal activity at the Facility is the production of Sodium Hyaluronate.

The discharge authorized by this permit is a combined discharge of reverse osmosis (RO) reject water and flush water from a vapor compressor still. The RO system provides permeate, which is the makeup water for the vapor compressor still. As the distillation process is initiated, the vapor compressor “flushes” the first ten minutes worth of permeate prior to the still reaching its full working capacity. The RO water will make up 95 percent of the discharge and the flush water from the still will make up 5 percent of the discharge. The RO reject water and vapor compressor flush water is combined prior to the sample monitoring point and discharged (SD-001) to the storm sewer, which flows to an uncontrolled onsite storm water pond, and ultimately flows to Big Woods (Upper Grace) Lake (Class 2B, 3B, 4A, 4B, 5, 6 Water) through a series of wetlands (which are not waters of the state). The Chaska municipal water supply provides a maximum of 80,000 gallons per day. Approximately 18 million gallons of water are used annually to facilitate the production process. The average flow rate of the discharge into the environment is 16,000 gallons per day with a maximum rate of 50,000 gallons per day.

Waters used to flush and clean the RO system, industrial process water, and sanitary wastes are discharged to the sanitary sewer.

All stormwater on site is managed under the No Exposure Exclusion as identified by the Minnesota Pollution Control Agencies Industrial Stormwater Multi-Sector General Permit MNR050000. Lifecore's Identification Number is MNRNE335C. All parking lot stormwater discharges to the onsite pond.

The location of designated monitoring station is specified on the attached "Summary of Stations and Station Locations" report.

Chemical Additives

Chemical additives currently approved to discharge through SD 001 include the following:

Product Name	Process in which Used and Purpose	Dosage Frequency	Maximum Rate of Use	Average Rate of Use
Vitec 3000	Antiscalant	0.267 oz/1000 gallons	60 gallons/year	38 gallons/year
Sodium Bisulfate 38%	Chlorine Removal	0.668 oz/1000 gallons	150 gallons/year	95 gallons/year

The January 1, 1988, calculated design **maximum daily** flow for this Facility is 0 million gallons per day (mgd). In accordance with the Minnesota Pollution Control Agency (MPCA) rules regarding nondegradation for all waters, the design **maximum daily** flow of the Facility as of January 1, 1988, and associated mass loading, is the baseline design flow and mass loading. This baseline flow and mass loading will be used to determine whether nondegradation review is required for any change in the discharge. Any change that results in an increase in design flow greater than 0.2 mgd and an increased loading of one or more pollutants, or any change in a discharge containing a toxic pollutant that results in a mass loading rate likely to increase the concentration of the toxicant in the receiving water by greater than one percent over the baseline quality, is subject to nondegradation review in accordance with Minn. R. 7050.0185.

This Permit also complies with Minn. R. 7053.0275 regarding anti-backsliding.

Any point source discharger of sewage, industrial, or other wastes for which a NPDES permit has been issued by the MPCA that contains effluent limits more stringent than those that would be established by parts 7053.0215 to 7053.0265 shall continue to meet the effluent limits established by the permit, unless the permittee establishes that less stringent effluent limits are allowable pursuant to federal law, under section 402(o) of the Clean Water Act, United States Code, title 33, section 1342.

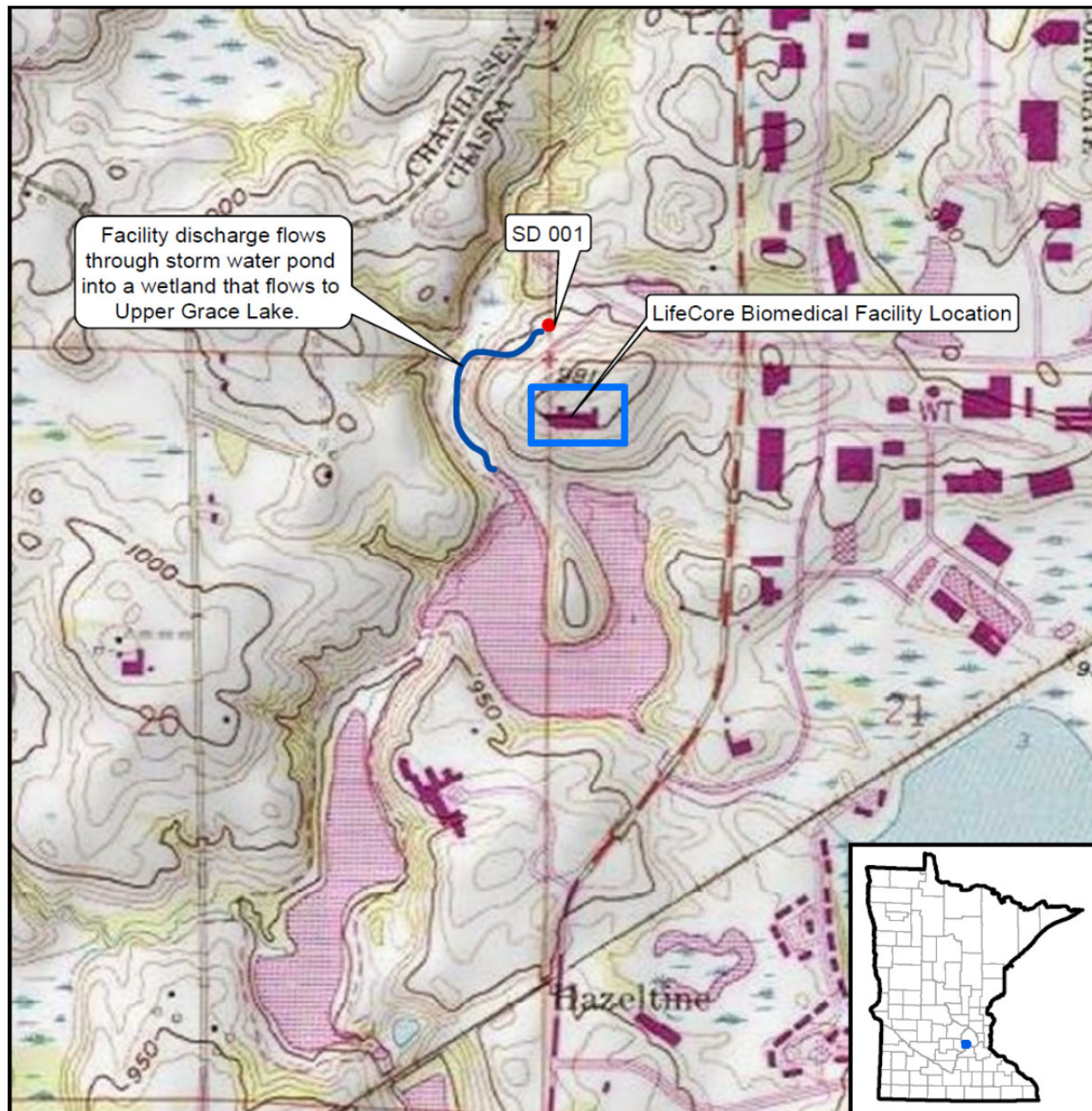
The location of the facility is shown on the following topographical map.

Topographic Map of Permitted Facility

MN0060747: LifeCore Biomedical LLC

T116N, R23W, Section 21

Chaska, Carver County, Minnesota



Map produced by: MPCA Staff, 10/23/2012
Source: USGS Shakopee and Victoria Quads
Scale: 1:15,000



Preliminary Determination on the Draft Permit

The MPCA Commissioner has made a preliminary determination to issue this NPDES/SDS permit for a term of approximately five years.

A draft permit is available for review at the MPCA office at the St. Paul address listed below and on-line at <http://www.pca.state.mn.us/news/data/index.cfm?PN=1>.

A copy of the draft permit will be mailed to you if the MPCA receives your written or oral request at this office. If you have questions about this draft permit or the Commissioner's preliminary determination, please contact Emma Ziebarth at 651-757-2445.

Written Comments

You may submit written comments on the conditions of the draft permit or on the Commissioner's preliminary determination.

Written comments must include the following:

1. A statement of your interest in the permit application or the draft permit.
2. A statement of the action you wish the MPCA to take, including specific references to sections of the draft permit that you believe should be changed.
3. The reasons supporting your position, stated with sufficient specificity as to allow the Commissioner to investigate the merits of your position.

Petition for Public Informational Meeting

You also may request that the MPCA Commissioner hold a public informational meeting. A public informational meeting is an informal meeting that the MPCA may hold to solicit public comment and statements on matters before the MPCA, and to help clarify and resolve issues.

A petition requesting a public informational meeting must include the following information:

1. A statement identifying the matter of concern.
2. The information required under items 1 through 3 of "Written Comments," identified above.
3. A statement of the reasons the MPCA should hold a public informational meeting.
4. The issues that you would like the MPCA to address at the public informational meeting.

Petition for Contested Case Hearing

You also may submit a petition for a contested case hearing. A contested case hearing is a formal evidentiary hearing before an administrative law judge. In accordance with Minn. R. 7000.1900, the MPCA will grant a petition to hold a contested case hearing if it finds that: (1) there is a material issue of fact in dispute concerning the application or draft permit; (2) the MPCA has the jurisdiction to make a determination on the disputed material issue of fact; and (3) there is a reasonable basis underlying the disputed material issue of fact or facts such that the holding of the contested case hearing would allow the introduction of information that would aid the MPCA in resolving the disputed facts in making a final decision on the draft permit. A material issue of fact means a fact question, as distinguished from a policy question, whose resolution could have a direct bearing on a final MPCA decision.

A petition for a contested case hearing must include the following information:

1. A statement of reasons or proposed findings supporting the MPCA decision to hold a contested case hearing according to the criteria in Minn. R. 7000.1900, as discussed above.
2. A statement of the issues proposed to be addressed by a contested case hearing and the specific relief requested or resolution of the matter.

In addition and to the extent known, a petition for a contested case hearing should also include the following information:

1. A proposed list of prospective witnesses to be called, including experts, with a brief description of proposed testimony or summary of evidence to be presented at a contested case hearing.
2. A proposed list of publications, references, or studies to be introduced and relied upon at a contested case hearing.
3. An estimate of time required for you to present the matter at a contested case hearing.

MPCA Decision

You may submit a petition to the Commissioner requesting that the MPCA Citizens' Board (Board) consider the permit issuance. To be considered timely, the petition must be received by the MPCA by 4:30 p.m. on the date the public comment period ends, identified on page 1 of this notice. Under the provisions of Minn. Stat. § 116.02, subd. 6(4), the decision whether to issue the permit and, if so, under what terms will be presented to the Board for decision if: (1) the Commissioner grants the petition requesting the matter be presented to the Board; (2) one or more Board members request to hear the matter before the time the Commissioner makes a final decision on the permit; or (3) a timely request for a contested case hearing is pending. You may participate in the activities of the Board as provided in Minn. R. 7000.0650.

The written comments, requests, and petitions submitted on or before the last day of the public comment period will be considered in the final decision on this permit. If the MPCA does not receive written comments, requests, or petitions during the public comment period, MPCA staff as authorized by the Board, will make the final decision on the draft permit.

Comments, petitions, and/or requests must be submitted in writing on or before the end date of the public comment period identified on page 1 of this notice to:

Emma Ziebarth
MPCA – 5th Floor
520 Lafayette Road N
St. Paul MN 55155-4194