



STATE OF MINNESOTA

Minnesota Pollution Control Agency

Industrial Division

**National Pollutant Discharge Elimination System (NPDES)/
State Disposal System (SDS) Permit MN0062227**

PERMITTEE: Milestone Materials
FACILITY NAME: Milestone Materials - Goldberg Quarry
RECEIVING WATER: South Fork Zumbro River (Class 2B,3B,3C,4A,4B,5,6 water)

CITY OR TOWNSHIP: Oronoco Township **COUNTY:** Olmsted
ISSUANCE DATE: **EXPIRATION DATE:**

The state of Minnesota, on behalf of its citizens through the Minnesota Pollution Control Agency (MPCA), authorizes the Permittee to operate a disposal system at the facility named above and to discharge from this facility to the receiving water named above, in accordance with the requirements of this permit.

The goal of this permit is to reduce pollutant levels in point source discharges and protect water quality in accordance with Minnesota and US statutes and rules, including Minn. Stat. chs. 115 and 116, Minn. R. chs. 7001, 7050, 7053, 7060, 7090, and the US Clean Water Act.

This permit is effective on the issuance date identified above, and supersedes the previous permit that was issued for this facility on September 30, 2005. This permit expires at midnight on the expiration date identified above.

Signature: _____

Jeff Udd, P.E.
Supervisor, Water Quality Permits Unit
Water Section
Industrial Division

for The Minnesota Pollution Control Agency

Submit DMRs to:

Attention: Discharge Monitoring Reports
Minnesota Pollution Control Agency
520 Lafayette Rd N
St Paul, MN 55155-4194

Submit Other WQ Reports to:

Attention: WQ Submittals Center
Minnesota Pollution Control Agency
520 Lafayette Rd N
St Paul, MN 55155-4194

Questions on this permit?

- For DMR and other permit reporting issues, contact:
Belinda Nicholas, 651-757-2613.
- For specific permit requirements or permit compliance status, contact:
Craig Weingart, 507-206-2655.
- General permit or NPDES program questions, contact:
MPCA, 651-282-6143 or 1-800-657-3938.

520 Lafayette Rd. N.; St. Paul, MN 55155-4194; 651-296-6300 (voice); 651-282-5332 (TTY)

Regional Offices: Duluth • Brainerd • Detroit Lakes • Marshall • Rochester

Equal Opportunity Employer • Printed on recycled paper containing at least 10% fibers from paper recycled by consumers

Table of Contents

Permitted Facility Description	3
Topographic Map of Permitted Facility	4
Summary of Stations and Station Locations	5
Limits and Monitoring Requirements	6
 Chapter 1. Industrial Process Wastewater	 7
1. Prohibited Discharges	
2. Toxic Substance Reporting	
3. Mobile and Rail Equipment Service Areas	
4. New Proposed Dewatering	
5. Application for Permit Reissuance	
Chapter 2. Surface Discharge Stations	8
1. Requirements for Specific Stations	
2. Sampling Location	
3. Surface Discharges	
4. Winter Sampling Conditions	
5. Discharge Monitoring Reports	
Chapter 3. Stormwater Management	8
1. Authorization	
2. Prohibited Discharges	
3. Water Quality Standards	
4. Stormwater Pollution Prevention Plan	
5. Temporary Protection and Permanent Cover	
6. Inspection and Maintenance	
7. Sedimentation Basin Design and Construction	
8. Application of Chemical Dust Suppressants	
9. Reporting	
10. Records	
11. Notification	
12. Request for Termination of Stormwater Permit Coverage	
13. Definitions	
Chapter 4. Total Facility Requirements	15
1. General Requirements	

Facility Description

The Milestone Materials - Goldberg Quarry facility (facility) is located at SE 1/4 of SW 1/4 of Section 36, Township 108 North, Range 14 West, Oronoco Township, Olmsted County, Minnesota.

The facility is a gravel and limestone quarrying and mining operation. The facility operates seasonally and as market conditions dictate. Mining areas are dewatered prior to the start of mining activities, with some reduced additional dewatering during mining operations. The water discharged consists of pit dewatering and gravel washing water. In addition, stormwater is combined with the pit dewatering and gravel washing water in settling ponds prior to discharge. The facility discharges to the South Fork of the Zumbro River just north of Rochester, Minnesota.

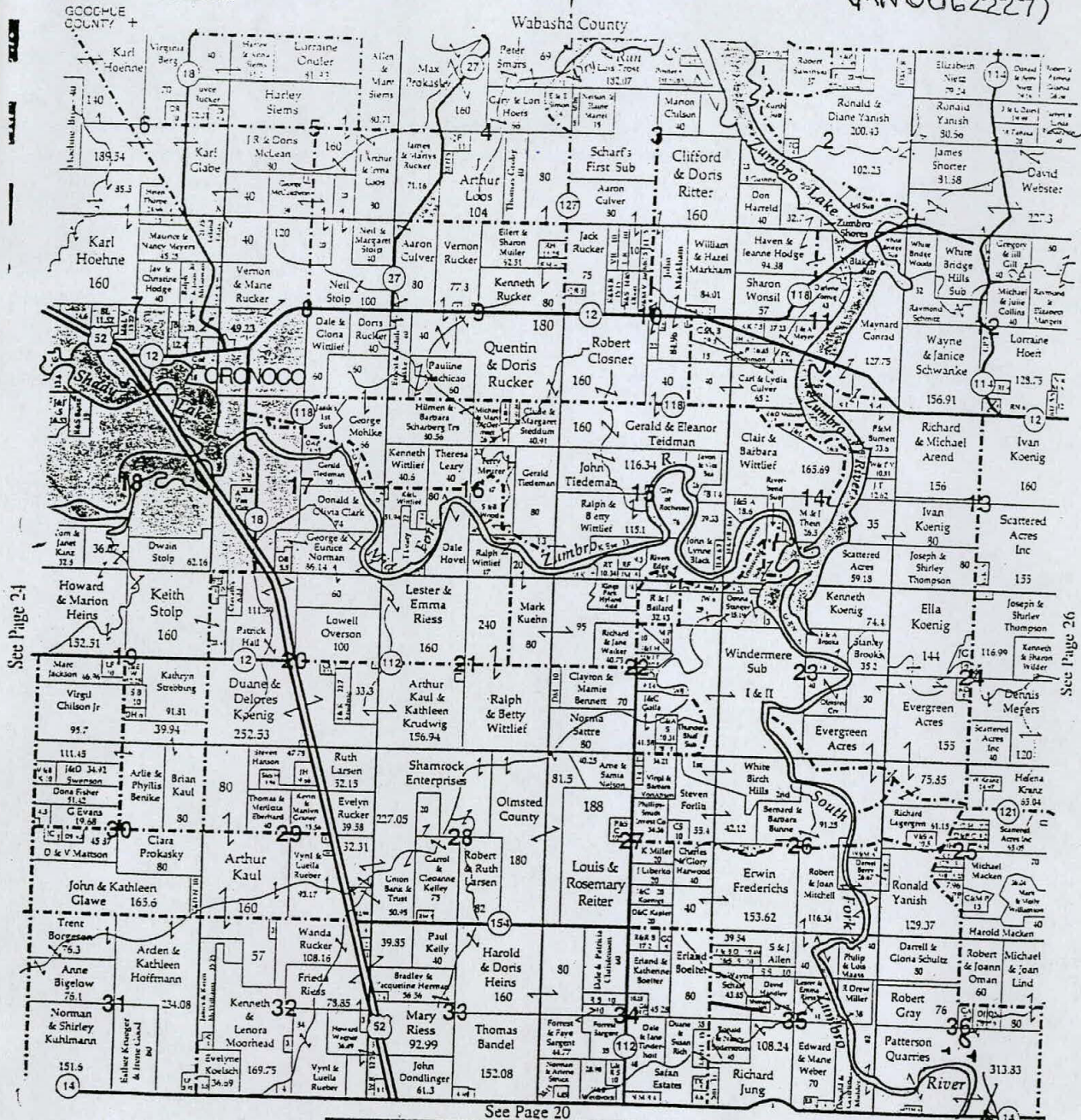
The discharge from SD001 or SD002 consists of the combined dewatering, washing, and stormwater from the mining operation at an average rate of 14.7 million gallons per day (mgd) and maximum rate of 16.45 mgd. The location of the discharge will be determined by the location in the quarry that activity is occurring. Water will flow to settling ponds which ultimately discharge from settling pond #3 to an unnamed ditch to the Zumbro River.

The location of the facility is shown on the attached map.

In accordance with MPCA rules regarding nondegradation for all waters that are not Outstanding Resource Value Waters, nondegradation review is required for any new or expanded significant discharge (Minn. R. 7050.0185). A significant discharge is: (1) a new discharge (not in existence before January 1, 1988) that is greater than 200,000 gallons per day to any water other than a Class 7 water or (2) an expanded discharge that expands by greater than 200,000 gallons per day that discharges to any water other than a Class 7 water or (3) a new or expanded discharge containing any toxic pollutant at a mass loading rate likely to increase the concentration of the toxicant in the receiving water by greater than one percent over the baseline quality. The flow rate used to determine significance is the design daily maximum flow. The January 1, 1988, design daily maximum flow for the facility is 2.2 mgd.

This Permit also complies with Minn. R. 7053.0275 regarding anti-backsliding. Any point source discharger of sewage, industrial, or other wastes for which a NPDES permit has been issued by the MPCA that contains effluent limits more stringent than those that would be established by Minn. R. 7053.0215 to 7053.0265 shall continue to meet the effluent limits established by the permit, unless the permittee establishes that less stringent effluent limits are allowable pursuant to federal law, under section 402(o) of the Clean Water Act, United States Code, title 33, section 1342.

T.108N. - R.14W.
(MN0062227)


PINE ISLAND
 TELEPHONE COMPANY

Goldberg
Quarry

DRAFT DRAFT DRAFT DRAFT DRAFT DRAFT DRAFT DRAFT DRAFT DRAFT

Surface Discharge Stations

<u>Station</u>	<u>Type of Station</u>	<u>Local Name</u>	<u>PLS Location</u>
SD001	Effluent To Surface Water	Pit Dewatering, Gravel Washwtr& Stormwater	NE Quarter of Section 36, Township 108 North, Range 14 West
SD002	Effluent To Surface Water	Pit Dewatering, Gravel Washwtr& Stormwater	NE Quarter of Section 36, Township 108 North, Range 14 West

Milestone Materials - Goldberg Quarry

Limits and Monitoring Requirements

DRAFT DRAFT DRAFT DRAFT DRAFT DRAFT DRAFT DRAFT DRAFT DRAFT

The Permittee shall comply with the limits and monitoring requirements as specified below.

SD 001: Pit Dewatering, Gravel Washwtr& Stormwater

Parameter	Limit	Units	Limit Type	Effective Period	Sample Type	Frequency	Notes
Flow	Monitor Only	mgd	Calendar Month Average	Jan-Dec	Measurement, Continuous	1 x Week	1
Flow	Monitor Only	mgd	Calendar Month Maximum	Jan-Dec	Measurement, Continuous	1 x Week	
Flow	Monitor Only	MG	Calendar Month Total	Jan-Dec	Measurement, Continuous	1 x Week	
pH	9.0	SU	Instantaneous Maximum	Jan-Dec	Measurement, Instantaneous	1 x Week	
pH	6.0	SU	Instantaneous Minimum	Jan-Dec	Measurement, Instantaneous	1 x Week	
Solids, Total Suspended (TSS)	1868	kg/day	Calendar Month Average	Jan-Dec	Grab	1 x Week	2
Solids, Total Suspended (TSS)	30	mg/L	Calendar Month Average	Jan-Dec	Grab	1 x Week	
Solids, Total Suspended (TSS)	45	mg/L	Daily Maximum	Jan-Dec	Grab	1 x Week	

SD 002: Pit Dewatering, Gravel Washwtr& Stormwater

Parameter	Limit	Units	Limit Type	Effective Period	Sample Type	Frequency	Notes
Flow	Monitor Only	mgd	Calendar Month Average	Jan-Dec	Measurement, Continuous	1 x Week	1
Flow	Monitor Only	mgd	Calendar Month Maximum	Jan-Dec	Measurement, Continuous	1 x Week	
Flow	Monitor Only	MG	Calendar Month Total	Jan-Dec	Measurement, Continuous	1 x Week	
pH	9.0	SU	Instantaneous Maximum	Jan-Dec	Measurement, Instantaneous	1 x Week	
pH	6.0	SU	Instantaneous Minimum	Jan-Dec	Measurement, Instantaneous	1 x Week	
Solids, Total Suspended (TSS)	1868	kg/day	Calendar Month Average	Jan-Dec	Grab	1 x Week	2
Solids, Total Suspended (TSS)	30	mg/L	Calendar Month Average	Jan-Dec	Grab	1 x Week	
Solids, Total Suspended (TSS)	45	mg/L	Daily Maximum	Jan-Dec	Grab	1 x Week	

Notes:
1 -- Facility discharges from SD001 or SD002, not simultaneously.
2 -- Facility total discharge limit (for SD001 and SD002).

DRAFT DRAFT DRAFT DRAFT DRAFT DRAFT DRAFT DRAFT DRAFT DRAFT DRAFT

Chapter 1. Industrial Process Wastewater

1. Prohibited Discharges

- 1.1 This permit does not authorize the discharge of sewage, wash water, scrubber water, spills, oil, hazardous substances, or equipment/vehicle cleaning and maintenance wastewaters to ditches, wetlands or other surface waters of the state.
- 1.2 The Permittee shall prevent the routing of pollutants from the facility to a municipal wastewater treatment system in any manner unless authorized by the pretreatment standards of the MPCA and the municipal authority.
- 1.3 The Permittee shall not transport pollutants to a municipal wastewater treatment system that will interfere with the operation of the treatment system or cause pass-through violations of effluent limits or water quality standards.

2. Chemical Additives

- 2.1 The following chemical additive has been approved for use on an as-needed basis according to the chemical manufacturer recommendations for use:

Clearwater CW13 (a polyacrylamide)

3. New Proposed Dewatering

- 3.1 The Permittee shall obtain a permit modification before discharging from a new dewatering outfall.
- 3.2 In addition to the requirements in the Permit Modifications section of this permit, the Permittee shall submit to the MPCA detailed plans and specifications for the proposed methods of achieving discharge limits for turbidity and total suspended solids, based in part upon representative water quality data for untreated wastewater and a detailed map and diagram description of the proposed design for the flow control structures, and route of the discharge to receiving waters.

4. Application for Permit Reissuance

- 4.1 The permit application shall include analytical data as part of the application for reissuance of this permit. These analyses shall be done on individual samples taken during the twelve-month period before the reissuance application is submitted.
- 4.2 The Permittee shall submit an application for permit reissuance at least 180 days before permit expiration. (Minnesota Rules, pt. 7001.0040, subp.3)
- 4.3 The permit application shall include analytical data for at least the following parameters at monitoring stations SD001 and SD002:
 - a. Total Dissolved Solids,
 - b. Hardness,
 - c. Oil and Grease and surfactants,
 - d. Antimony, arsenic, beryllium, cadmium, chromium, copper, lead, nickel, selenium, silver, thallium, and zinc,
 - e. Aluminum, barium, boron, cobalt, iron, magnesium, manganese molybdenum, total tin, and total aluminum.
- 4.4 A Pollution Prevention Plan which may be a revision of or an attachment to the current Pollution Prevention Plan.

DRAFT DRAFT DRAFT DRAFT DRAFT DRAFT DRAFT DRAFT DRAFT DRAFT

Chapter 2. Surface Discharge Stations

1. Requirements for Specific Stations

- 1.1 SD 001: Submit a monthly DMR monthly by 21 days after the end of each calendar month following permit issuance.
- 1.2 SD 002: Submit a monthly DMR monthly by 21 days after the end of each calendar month following permit issuance.

2. Sampling Location

- 2.1 Samples for Stations SD001 and SD002 shall be taken at points representative of the discharges.
- 2.2 Samples and measurements required by this permit shall be representative of the monitored activity.

3. Surface Discharges

- 3.1 Floating solids or visible foam shall not be discharged in other than trace amounts.
- 3.2 Oil or other substances shall not be discharged in amounts that create a visible color film.
- 3.3 The Permittee shall install and maintain outlet protection measures at the discharge stations to prevent erosion.

4. Winter Sampling Conditions

- 4.1 The Permittee shall sample flows at the designated monitoring stations including when this requires removing ice to sample the water. If the station is completely frozen throughout a designated sampling month, the Permittee shall check the "No Discharge" box on the Discharge Monitoring Report (DMR) and note the ice conditions in Comments on the DMR.

5. Discharge Monitoring Reports

- 5.1 The Permittee shall submit monitoring results for discharges in accordance with the limits and monitoring requirements for this station. If no discharge occurred during the reporting period, the Permittee shall check the "No Discharge" box on the Discharge Monitoring Report (DMR).

Chapter 3. Stormwater Management

1. Authorization

- 1.1 This chapter authorizes the Permittee to discharge stormwater associated with industrial activity in accordance with the terms and conditions of this chapter. The MPCA may initiate modification of this chapter in accordance with Minn. R. 7001.0170 and Minn. R. 7001.0190 Subp. 1 to incorporate revised requirements in response to the reissuance or modification of the General Stormwater Permit for Industrial Activity (MNR05000).

2. Prohibited Discharges

- 2.1 This permit, unless specifically authorized by another chapter, does not authorize the discharge of sewage, wash water, scrubber water, spills, oil, hazardous substances, or equipment/vehicle cleaning and maintenance wastewaters to ditches, wetlands or other surface waters of the state.
- 2.2 This permit does not authorize discharges from sites for which Environmental Assessment Worksheets or Environmental Impact Statements are required, in accordance with Minn. R. ch. 4410, until that environmental review is completed.

3. Water Quality Standards

- 3.1 The Permittee shall operate and maintain the facility and shall control runoff, including stormwater, from the facility to prevent the exceedance of water quality standards specified in Minnesota Rules, chs. 7050 and 7060.

DRAFT DRAFT DRAFT DRAFT DRAFT DRAFT DRAFT DRAFT DRAFT DRAFT

Chapter 3. Stormwater Management

3. Water Quality Standards

- 3.2 The Permittee shall limit and control the use of materials at the facility that may cause exceedances of ground water standards specified in Minnesota Rules, ch. 7060. These materials include, but are not limited to, detergents and cleaning agents, solvents, chemical dust suppressants, lubricants, fuels, drilling fluids, oils, fertilizers, explosives and blasting agents.

4. Stormwater Pollution Prevention Plan

- 4.1 Submit a Stormwater Pollution Prevention Plan by 180 days after permit issuance.
- 4.2 The Permittee shall develop and implement a Stormwater Pollution Prevention Plan (Plan) to address the specific conditions at the industrial facility. The goal of the Plan is to eliminate or minimize contact of stormwater with significant materials that may result in pollution of the runoff. If contact cannot be eliminated or reduced, stormwater that has contacted significant material should be treated before it is discharged from the site.
- 4.3 The Plan shall be implemented at the site before the Permittee is covered under this permit.
- 4.4 The Stormwater Pollution Prevention Plan shall include a description of appropriate Best Management Practices for protection of surface and ground water quality at the facility, and a schedule for implementing the practices. The Plan shall also include the procedures to be followed by designated staff employed by the Permittee to implement the plan.
- 4.5 The Permittee shall comply with its Stormwater Pollution Prevention Plan.

Plan Contents

- 4.6 Complete a drainage map. The map should indicate the following items at or adjacent to the facility:
- a. drainage areas and directions of stormwater runoff (indicated by arrows);
 - b. discharge outfalls from the site (structures that carry stormwater runoff from the facility such as ditches or storm sewers);
 - c. the name and location of waters of the state that receive facility stormwater runoff (if waters of the state are too distant from the facility to be indicated on the site map, indicate the name, direction and shortest distance to the lake, river, stream or wetland that receives runoff from your site);
 - d. areas where significant materials are exposed to stormwater;
 - e. locations of storm sewer inlets and an indication of which, if any, structures have floor drains or loading dock drains that are connected to storm sewers; and
 - f. locations and types of Best Management Practices (BMPs) currently installed at the facility to reduce or eliminate pollutants to stormwater.

DRAFT DRAFT DRAFT DRAFT DRAFT DRAFT DRAFT DRAFT DRAFT DRAFT

Chapter 3. Stormwater Management

4. Stormwater Pollution Prevention Plan

- 4.7 Complete an inventory of exposed significant materials. Indicate the types of significant materials handled or stored at the site that may potentially contact stormwater. The following are examples of materials that, if exposed to stormwater, must be included in the inventory:
- a. raw materials, such as fuels; solvents; petroleum products; detergents; plastic pellets; materials used in food processing or production; stockpiled sand, salt or coal;
 - b. by-products or intermediate products, such as wood dust, chips or bark; screened limestone, taconite or gravel by-product, recycled blacktop;
 - c. finished materials, such as metallic products, including scrap metal and recycled or scrap motor vehicle parts, old process equipment/machinery, taconite pellets;
 - d. waste products, such as ashes, sludge, solid and liquid waste, slag;
 - e. hazardous substances designated under section 101(14) of the Comprehensive Environmental Response Compensation and Liability Act (CERCLA);
 - f. any chemical the facility is required to report under section 313 of the Emergency Planning and Community Right-to-Know Act (EPCRA).
- 4.8 Evaluate facility areas for exposure of significant materials to stormwater. In creating the inventory of exposed significant materials, the Permittee must, at a minimum, evaluate the following areas at the industrial site (as well as other areas where appropriate) to determine whether or not significant materials are exposed in these areas:
- a. vehicle and equipment maintenance, parking and storage areas including fueling and washing/cleaning areas, to determine if there is discolored soil in these areas as a result of fuel and lubricant leaks and spills;
 - b. liquid storage tanks and other bulk material stockpile areas;
 - c. loading and unloading areas;
 - d. outdoor manufacturing, processing or storage areas and industrial plant yards, to determine if there is discolored soil in these areas as a result of leaked or spilled solvents, fuels, or lubricants;
 - e. dust or particulate generating areas including dust collection devices that may release dust;
 - f. rooftops contaminated by industrial activity or operation of a pollution control device;
 - g. on-site waste disposal areas, such as waste ponds, dumpsters, solid waste storage or management areas; and
 - h. exposed (non-vegetated) soil areas where there is a potential for erosion to occur.

DRAFT DRAFT DRAFT DRAFT DRAFT DRAFT DRAFT DRAFT DRAFT DRAFT

Chapter 3. Stormwater Management

4. Stormwater Pollution Prevention Plan

- 4.9 Describe appropriate BMPs, including structural and non-structural BMPs, that will be used at the facility to minimize or eliminate pollution of stormwater at the site. The description must include an objective for each BMP, as well as a description of how to evaluate proper functioning of the BMP and any maintenance requirements of the BMP. BMPs should target significant materials and areas identified in subparts 7 and 8 of this part. The following general categories of BMPs shall be considered and one or more shall be incorporated into the facility's Plan if significant materials are exposed to stormwater on-site:
- a. Source reduction: reduce or eliminate the significant materials that are exposed to stormwater. Materials management practices should be evaluated to determine whether inventories of exposed materials can be reduced or eliminated. This can include clean-up of equipment yards, periodic checking of dust control equipment to ensure minimal accumulation of dust in the area of control equipment, removal and treatment of petroleum contaminated soil, consolidation of materials from multiple areas into one area, and training employees regarding proper handling and disposal of materials. Significant materials may also be moved indoors or covered with a tarp or structure to eliminate contact with precipitation.
 - b. Diversion: divert stormwater drainage away from exposed significant materials through use of curbing, berms, sewers or other forms of drainage control or elevate exposed significant material above surrounding drainage.
 - c. Treatment: where contact of stormwater with significant materials is unavoidable, use treatment devices to reduce the concentration and amount of pollutants in the discharge. Such devices include oil/water separators, stormwater detention/retention ponds, and vegetative swales.
- 4.10 Evaluate all discharge conveyances from the site (storm sewers, pipes, tile lines, ditches, etc.) to determine if liquids other than stormwater are being discharged from these devices. This should be done during dry weather when stormwater discharge is not occurring. The evaluation should cover sewer inlets and floor drains to determine which inlets/drains are connected to sanitary sewer lines, storm sewer lines, or septic tanks/drainage fields; appropriate methods such as dye or smoke testing or video imaging should be used to determine the source of discharges.
- The Plan must certify that discharges from the site have been evaluated for the presence of non-stormwater discharges. The certification shall indicate the date of testing, location of testing, describe the method used to determine the source of discharges and the results of testing. Discharge of non-stormwater (such as sanitary sewer or floor drain connections to storm sewers) is not authorized by this permit; before such discharge may continue, authorization under an appropriate NPDES permit must be obtained.
- 4.11 Develop a preventive maintenance program. The program must require regular inspection and maintenance of stormwater management devices (e.g. cleaning oil/water separators and catch basins), as well as inspecting and testing plant equipment and systems to uncover conditions that could cause breakdowns or failures resulting in discharges of pollutants (e.g. hydraulic leaks, torn bag-house filters) to surface waters.
- 4.12 Develop a spill prevention and response procedure. In order to develop this procedure, Permittees should evaluate where spills have occurred and where they have the potential to occur. Determine drainage points for potential spill areas and develop appropriate spill prevention and containment measures, should a spill occur. Detailed procedures for cleaning-up spills shall be identified and made available to appropriate personnel. If your facility has any other spill contingency plan that satisfies the above requirements, that plan may be incorporated by reference into this Plan to satisfy this requirement.
- 4.13 Develop and implement an employee training program to inform appropriate personnel of the components and goals of the Plan. Training shall address spill response, good housekeeping and materials management practices. The Plan shall identify periodic dates for such training.
- 4.14 Identify personnel responsible for managing and implementing the Plan as well as those responsible for the reporting requirements of this permit. This should include the facility contact person as indicated on the permit application. Identified personnel must be available at reasonable times of operation.

DRAFT DRAFT DRAFT DRAFT DRAFT DRAFT DRAFT DRAFT DRAFT DRAFT

Chapter 3. Stormwater Management

5. Temporary Protection and Permanent Cover

- 5.1 The Permittee shall provide and maintain temporary protection or permanent cover for the exposed areas at the facility.
- 5.2 Temporary protection methods are used to prevent erosion on a short-term basis, such as the placement of mulching straw, wood fiber blankets, wood chips, erosion control netting, or temporary seeding.
- 5.3 Permanent cover or final stabilization methods are used to prevent erosion, such as the placement of rip rap, sodding, or permanent seeding or planting. Permanent seeding and planting must have a uniform perennial vegetation cover of at least 70 percent density to constitute final stabilization.

6. Inspection and Maintenance

- 6.1 Site inspections shall be conducted at least once every two months throughout the calendar year. During winter months, the inspections shall be conducted during non-frozen conditions. Inspections shall be conducted by an appropriately trained personnel at the facility site, as identified in part 4.13 of this chapter. The purpose of inspections is to: 1) determine whether structural and non-structural BMPs require maintenance or changes, and 2) evaluate the completeness and accuracy of the Plan.

At least one inspection during a reporting period shall be conducted while stormwater is discharging from the facility.

- 6.2 Inspections shall be documented and a copy of all documentation shall remain on the permitted site whenever Permittee staff are available on the site, and be available upon request. The inspection form developed for the General Storm Water Permit for Industrial Activity may be used for recording inspection results.
- 6.3 The following compliance items will be inspected, and documented where appropriate:
 - a. evaluate the facility to determine that the Plan accurately reflects site conditions as described in subpart 6 of this part, and document any inaccuracies;
 - b. evaluate the facility to determine whether new exposed materials have been added to the site since completion of the Plan, and document any new significant materials;
 - c. during the inspection conducted during the runoff event, observe the runoff to determine if it is discolored or otherwise visibly contaminated, and document observations; and,
 - d. determine if the non-structural and structural BMPs as indicated in the Plan are installed and functioning properly.
- 6.4 The Permittee shall ensure that temporary protection and permanent cover for the exposed areas at the site are maintained.
- 6.5 Indicate the date and time of the inspection as well as the name of the inspector on the inspection form.
- 6.6 When the depth of sediment collected in the final sedimentation basin above the outfall reaches one-half of the riser height, or one-half of the basin design hydraulic storage volume, the Permittee shall drain the basin and remove the sediment within sixty (60) days of discovery. No outflow from the sedimentation basin shall occur while sediment is being removed from that basin. The sediment removed from the basin shall be disposed of at a site which drains to sedimentation basin(s) at the facility.
- 6.7 If conditions are observed at the site that require changes in the Plan, such changes shall be made to the Plan prior to submission of the annual report for that calendar year.
- 6.8 The Permittee shall minimize vehicle tracking of gravel, soil or mud onto paved surfaces at the facility.

DRAFT DRAFT DRAFT DRAFT DRAFT DRAFT DRAFT DRAFT DRAFT DRAFT

Chapter 3. Stormwater Management

6. Inspection and Maintenance

- 6.9 If the findings of a site inspection indicate that BMPs are not meeting the objectives as identified in subpart 9 of this part, corrective actions must be initiated within 30 days and the BMP restored to full operation as soon as field conditions allow.
- 6.10 The Permittee shall remove tracked material from the road surface and return it to the facility within one (1) day of discovery so that the materials drain to sedimentation basin(s) at the facility.

7. Sedimentation Basin Design and Construction

New Sedimentation Basins

- 7.1 Sedimentation basins shall be designed by a registered professional engineer, and installed under the direct supervision of a registered professional engineer.
- 7.2 The basin shall provide at least 1800 cubic feet, per acre drained, of hydraulic storage volume below the discharge point.
- 7.3 Inlet(s) and outlet(s) shall be designed to prevent short circuiting and the discharge of floating debris.
- 7.4 The inlet(s) shall be placed at an elevation at least above one-half of the basin design hydraulic storage volume.
- 7.5 The elevated outlet(s) shall be constructed in accordance with the requirements of this permit and in combination with other BMPs standard to the nonmetallic mining industry to control sediment and the volume of water discharged.
- 7.6 Permanent erosion control, such as rip rap, splash pads or gabions shall be installed at the outlet(s) to prevent downstream erosion.
- 7.7 The basins shall be designed to allow for regular removal of accumulated sediment by a backhoe or other suitable equipment.

8. Application of Chemical Dust Suppressants

- 8.1 If chemical dust suppressants are applied, the Permittee shall submit a Chemical Dust Suppressant Annual Report due 31 days after the end of each calendar year following the application of a chemical dust suppressant.
- 8.2 The Chemical Dust Suppressant Annual Report shall include:
- a. a record of the dates, methods, locations and amounts by volume of chemical application at the facility;
 - b. whether the product was applied in the preceding year; and,
 - c. the results of a chemical analysis of the materials applied each year.
- 8.3 If a material applied is mixed with water or another solvent before application, the chemical analysis shall be done on the aqueous or other mixture that is representative of the solution applied. This analysis shall be conducted during the same calendar year of application. This analysis shall include the parameters that may be determined by U.S. Environmental Protection Agency (EPA) Methods 624 and 625 which are described in 40 CFR Part 136.
- 8.4 Chemical dust suppressants, if used, shall not be applied within 100 feet of the surface receiving waters identified in the 'Facility Description' section of this permit. These materials also shall not be applied within 100 feet of ditches that conduct surface flow to the surface receiving waters identified on Page 1 of this permit.

9. Reporting

- 9.1 Submit a Stormwater Annual Report by March 31 of each year following permit issuance. A copy of the Stormwater Annual Report Form is provided in the appendices section of this permit.

DRAFT DRAFT DRAFT DRAFT DRAFT DRAFT DRAFT DRAFT DRAFT DRAFT

Chapter 3. Stormwater Management

9. Reporting

- 9.2 The Permittee shall, upon request of the Agency, submit within a reasonable time the information and reports that are relevant to compliance with this Chapter, including the Plan, inspection reports, annual reports, original laboratory sheets from analyses conducted on the waste stream, and BMP plans and specifications.

10. Records

- 10.1 The Plan shall be retained for the duration of the permit. A copy of the Plan shall remain on the permitted site whenever Permittee staff are available on the site, and be available upon request. The Permittee shall maintain the following records for the period of permit coverage:
- a. dates of inspections;
 - b. findings of inspections;
 - c. corrective actions taken;
 - d. documentation of all changes to the Plan; and,
 - e. a copy of annual reports.

11. Notification

- 11.1 If the Permittee discharges stormwater into a municipal storm sewer, the Permittee shall notify the operator of the municipal storm sewer of the existence of this permit.

12. Request for Termination of Stormwater Permit Coverage

- 12.1 All Permittees regulated by 40 CFR 122.26(b)(14)(i) through (ix) and (xi) may request termination of permit coverage by applying for the no exposure exclusion from permitting. The Permittee must submit (form provided by the Agency) a written certification that a condition of no exposure exists at the facility and that the facility meets the definition of no exposure of industrial activities and materials to storm water.

The application for the no exposure exclusion must be completed by the Permittee and sent to: MPCA, Industrial Storm Water Program, 520 Lafayette Rd N, St Paul, MN 55155-4194.

Failure to complete an accurate application will result in the facility being denied the no exposure exclusion from permitting. The facility must submit the application to the Agency once every five years.

- 12.2 The no exposure exclusion is conditional. The Permittee must maintain a condition of no exposure at the facility in order for the no exposure exclusion to remain applicable. In the event of any change or circumstance that causes exposure of industrial activities or materials to stormwater, the Permittee must comply with the stormwater requirements of this chapter.
- 12.3 The no exposure certification is non-transferrable. In the event that the facility operator changes, then the new operator must submit a new no exposure certification to the MPCA, Industrial Stormwater Program, 520 Lafayette Rd N, St Paul, MN 55155-4194.
- 12.4 The MPCA retains the authority to require the facility operator to comply with the requirements of this chapter, even when an industrial operator certifies no exposure, if the MPCA has determined that the discharge is contributing to the violation of, or interfering with the attainment or maintenance of water quality standards, including designated uses.

DRAFT DRAFT DRAFT DRAFT DRAFT DRAFT DRAFT DRAFT DRAFT DRAFT

Chapter 3. Stormwater Management

13. Definitions

- 13.1 "No exposure" means all industrial materials and activities are protected by a storm resistant shelter to prevent exposure to rain, snow, snow melt, and/or runoff. Industrial activities or materials include, but are not limited to, material handling equipment or activities, industrial machinery, raw materials, intermediate products, by-products, final products, or waste products.
- 13.2 "Non-stormwater discharge" means any discharge not comprised entirely of stormwater discharges authorized by a NPDES permit.
- 13.3 "Runoff" means any liquid that drains over land from any part of a facility.

Chapter 4. Total Facility Requirements

1. General Requirements

General Requirements

- 1.1 Incorporation by Reference. The following applicable federal and state laws are incorporated by reference in this permit, are applicable to the Permittee, and are enforceable parts of this permit: 40 CFR pts. 122.41, 122.42, 136, 403 and 503; Minn. R. pts. 7001, 7041, 7045, 7050, 7052, 7053, 7060, and 7080; and Minn. Stat. Sec. 115 and 116.
- 1.2 Permittee Responsibility. The Permittee shall perform the actions or conduct the activity authorized by the permit in compliance with the conditions of the permit and, if required, in accordance with the plans and specifications approved by the Agency. (Minn. R. 7001.0150, subp. 3, item E)
- 1.3 Toxic Discharges Prohibited. Whether or not this permit includes effluent limitations for toxic pollutants, the Permittee shall not discharge a toxic pollutant except according to Code of Federal Regulations, Title 40, sections 400 to 460 and Minnesota Rules 7050, 7052, 7053 and any other applicable MPCA rules. (Minn. R. 7001.1090, subp.1, item A)
- 1.4 Nuisance Conditions Prohibited. The Permittee's discharge shall not cause any nuisance conditions including, but not limited to: floating solids, scum and visible oil film, acutely toxic conditions to aquatic life, or other adverse impact on the receiving water. (Minn. R. 7050.0210 subp. 2)
- 1.5 Property Rights. This permit does not convey a property right or an exclusive privilege. (Minn. R. 7001.0150, subp. 3, item C)
- 1.6 Liability Exemption. In issuing this permit, the state and the MPCA assume no responsibility for damage to persons, property, or the environment caused by the activities of the Permittee in the conduct of its actions, including those activities authorized, directed, or undertaken under this permit. To the extent the state and the MPCA may be liable for the activities of its employees, that liability is explicitly limited to that provided in the Tort Claims Act. (Minn. R. 7001.0150, subp. 3, item O)
- 1.7 The MPCA's issuance of this permit does not obligate the MPCA to enforce local laws, rules, or plans beyond what is authorized by Minnesota Statutes. (Minn. R. 7001.0150, subp.3, item D)
- 1.8 Liabilities. The MPCA's issuance of this permit does not release the Permittee from any liability, penalty or duty imposed by Minnesota or federal statutes or rules or local ordinances, except the obligation to obtain the permit. (Minn. R. 7001.0150, subp.3, item A)
- 1.9 The issuance of this permit does not prevent the future adoption by the MPCA of pollution control rules, standards, or orders more stringent than those now in existence and does not prevent the enforcement of these rules, standards, or orders against the Permittee. (Minn. R. 7001.0150, subp.3, item B)

DRAFT DRAFT DRAFT DRAFT DRAFT DRAFT DRAFT DRAFT DRAFT DRAFT

Chapter 4. Total Facility Requirements

1. General Requirements

- 1.10 Severability. The provisions of this permit are severable and, if any provisions of this permit or the application of any provision of this permit to any circumstance are held invalid, the application of such provision to other circumstances and the remainder of this permit shall not be affected thereby.
- 1.11 Compliance with Other Rules and Statutes. The Permittee shall comply with all applicable air quality, solid waste, and hazardous waste statutes and rules in the operation and maintenance of the facility.
- 1.12 Inspection and Entry. When authorized by Minn. Stat. Sec. 115.04; 115B.17, subd. 4; and 116.091, and upon presentation of proper credentials, the agency, or an authorized employee or agent of the agency, shall be allowed by the Permittee to enter at reasonable times upon the property of the Permittee to examine and copy books, papers, records, or memoranda pertaining to the construction, modification, or operation of the facility covered by the permit or pertaining to the activity covered by the permit; and to conduct surveys and investigations, including sampling or monitoring, pertaining to the construction, modification, or operation of the facility covered by the permit or pertaining to the activity covered by the permit. (Minn. R. 7001.0150, subp.3, item I)
- 1.13 Control Users. The Permittee shall regulate the users of its wastewater treatment facility so as to prevent the introduction of pollutants or materials that may result in the inhibition or disruption of the conveyance system, treatment facility or processes, or disposal system that would contribute to the violation of the conditions of this permit or any federal, state or local law or regulation.

Sampling

- 1.14 Representative Sampling. Samples and measurements required by this permit shall be conducted as specified in this permit and shall be representative of the discharge or monitored activity. (40 CFR 122.41 (j)(1))
- 1.15 Additional Sampling. If the Permittee monitors more frequently than required, the results and the frequency of monitoring shall be reported on the Discharge Monitoring Report (DMR) or another MPCA-approved form for that reporting period. (Minn. R. 7001.1090, subp. 1, item E)
- 1.16 Certified Laboratory. A laboratory certified by the Minnesota Department of Health and/or registered by the MPCA shall conduct analyses required by this permit. Analyses of dissolved oxygen, pH, temperature, specific conductance, and total residual oxidants (chlorine, bromine) do not need to be completed by a certified laboratory but shall comply with manufacturers specifications for equipment calibration and use. (Minn. Stat. Sec. 144.97 through 144.98 and Minn. R. 4740.2010 and 4740.2050 through 4740.2120) (Minn. R. 4740.2010 and 4740.2050 through 2120)
- 1.17 Sample Preservation and Procedure. Sample preservation and test procedures for the analysis of pollutants shall conform to 40 CFR Part 136 and Minn. R. 7041.3200.
- 1.18 Equipment Calibration: Flow meters, pumps, flumes, lift stations or other flow monitoring equipment used for purposes of determining compliance with permit shall be checked and/or calibrated for accuracy at least twice annually. (Minn. R. 7001.0150, subp. 2, items B and C)

DRAFT DRAFT DRAFT DRAFT DRAFT DRAFT DRAFT DRAFT DRAFT DRAFT

Chapter 4. Total Facility Requirements

1. General Requirements

- 1.19 Maintain Records. The Permittee shall keep the records required by this permit for at least three years, including any calculations, original recordings from automatic monitoring instruments, and laboratory sheets. The Permittee shall extend these record retention periods upon request of the MPCA. The Permittee shall maintain records for each sample and measurement. The records shall include the following information (Minn. R. 7001.0150, subp. 2, item C):
- a. The exact place, date, and time of the sample or measurement;
 - b. The date of analysis;
 - c. The name of the person who performed the sample collection, measurement, analysis, or calculation; and
 - d. The analytical techniques, procedures and methods used; and
 - e. The results of the analysis.
- 1.20 Completing Reports. The Permittee shall submit the results of the required sampling and monitoring activities on the forms provided, specified, or approved by the MPCA. The information shall be recorded in the specified areas on those forms and in the units specified. (Minn. R. 7001.1090, subp. 1, item D; Minn. R. 7001.0150, subp. 2, item B)

Required forms may include:

DMR Supplemental Form

Individual values for each sample and measurement must be recorded on the DMR Supplemental Form which, if required, will be provided by the MPCA. DMR Supplemental Forms shall be submitted with the appropriate DMRs. You may design and use your own supplemental form; however it must be approved by the MPCA.

Note: Required summary information **MUST** also be recorded on the DMR. Summary information that is submitted **ONLY** on the DMR Supplemental Form does not comply with the reporting requirements.

- 1.21 Submitting Reports. DMRs and Supplementals shall be submitted to:

MPCA

Attn: Discharge Monitoring Reports
520 Lafayette Road North
St. Paul, Minnesota 55155-4194.

DMRs, DMR supplemental forms and related attachments may be electronically submitted via the MPCA Online Services Portal after authorization is approved. When electronically submitted, the paper DMR submittal requirement is waived.

DMRs and DMR Supplemental Forms shall be postmarked or electronically submitted by the 21st day of the month following the sampling period or as otherwise specified in this permit. Electronic DMR submittal must be complete on or before 11:59 PM of the 21st day of the month following the sampling period or as otherwise specified in this permit. A DMR shall be submitted for each required station even if no discharge occurred during the reporting period. (Minn. R. 7001.0150, subps. 2.B and 3.H)

Other reports required by this permit shall be postmarked by the date specified in the permit to:

MPCA

Attn: WQ Submittals Center
520 Lafayette Road North
St. Paul, Minnesota 55155-4194

DRAFT DRAFT DRAFT DRAFT DRAFT DRAFT DRAFT DRAFT DRAFT DRAFT

Chapter 4. Total Facility Requirements

1. General Requirements

- 1.22 Incomplete or Incorrect Reports. The Permittee shall immediately submit an amended report or DMR to the MPCA upon discovery by the Permittee or notification by the MPCA that it has submitted an incomplete or incorrect report or DMR. The amended report or DMR shall contain the missing or corrected data along with a cover letter explaining the circumstances of the incomplete or incorrect report. (Minn. R. 7001.0150 subp. 3, item G)
- 1.23 Required Signatures. All DMRs, forms, reports, and other documents submitted to the MPCA shall be signed by the Permittee or the duly authorized representative of the Permittee. Minn. R. 7001.0150, subp. 2, item D. The person or persons that sign the DMRs, forms, reports or other documents must certify that he or she understands and complies with the certification requirements of Minn. R. 7001.0070 and 7001.0540, including the penalties for submitting false information. Technical documents, such as design drawings and specifications and engineering studies required to be submitted as part of a permit application or by permit conditions, must be certified by a registered professional engineer. (Minn. R. 7001.0540)
- 1.24 Detection Level. The Permittee shall report monitoring results below the reporting limit (RL) of a particular instrument as "<" the value of the RL. For example, if an instrument has a RL of 0.1 mg/L and a parameter is not detected at a value of 0.1 mg/L or greater, the concentration shall be reported as "<0.1 mg/L." "Non-detected," "undetected," "below detection limit," and "zero" are unacceptable reporting results, and are permit reporting violations. (Minn. R. 7001.0150, subp. 2, item B)

Where sample values are less than the level of detection and the permit requires reporting of an average, the Permittee shall calculate the average as follows:

- a. If one or more values are greater than the level of detection, substitute zero for all nondetectable values to use in the average calculation.
 - b. If all values are below the level of detection, report the averages as "<" the corresponding level of detection.
 - c. Where one or more sample values are less than the level of detection, and the permit requires reporting of a mass, usually expressed as kg/day, the Permittee shall substitute zero for all nondetectable values. (Minn. R. 7001.0150, subp. 2, item B)
- 1.25 Records. The Permittee shall, when requested by the Agency, submit within a reasonable time the information and reports that are relevant to the control of pollution regarding the construction, modification, or operation of the facility covered by the permit or regarding the conduct of the activity covered by the permit. (Minn. R. 7001.0150, subp. 3, item H)
- 1.26 Confidential Information. Except for data determined to be confidential according to Minn. Stat. Sec. 116.075, subd. 2, all reports required by this permit shall be available for public inspection. Effluent data shall not be considered confidential. To request the Agency maintain data as confidential, the Permittee must follow Minn. R. 7000.1300.

Noncompliance and Enforcement

- 1.27 Subject to Enforcement Action and Penalties. Noncompliance with a term or condition of this permit subjects the Permittee to penalties provided by federal and state law set forth in section 309 of the Clean Water Act; United States Code, title 33, section 1319, as amended; and in Minn. Stat. Sec. 115.071 and 116.072, including monetary penalties, imprisonment, or both. (Minn. R. 7001.1090, subp. 1, item B)
- 1.28 Criminal Activity. The Permittee may not knowingly make a false statement, representation, or certification in a record or other document submitted to the Agency. A person who falsifies a report or document submitted to the Agency, or tampers with, or knowingly renders inaccurate a monitoring device or method required to be maintained under this permit is subject to criminal and civil penalties provided by federal and state law. (Minn. R. 7001.0150, subp. 3, item G., 7001.1090, subps. 1, items G and H and Minn. Stat. Sec. 609.671)

DRAFT DRAFT DRAFT DRAFT DRAFT DRAFT DRAFT DRAFT DRAFT DRAFT

Chapter 4. Total Facility Requirements

1. General Requirements

- 1.29 Noncompliance Defense. It shall not be a defense for the Permittee in an enforcement action that it would have been necessary to halt or reduce the permitted activity in order to maintain compliance with the conditions of this permit. (40 CFR 122.41(c))
- 1.30 Effluent Violations. If sampling by the Permittee indicates a violation of any discharge limitation specified in this permit, the Permittee shall immediately make every effort to verify the violation by collecting additional samples, if appropriate, investigate the cause of the violation, and take action to prevent future violations. If the permittee discovers that noncompliance with a condition of the permit has occurred which could endanger human health, public drinking water supplies, or the environment, the Permittee shall within 24 hours of the discovery of the noncompliance, orally notify the commissioner and submit a written description of the noncompliance within 5 days of the discovery. The written description shall include items a. through e., as listed below. If the Permittee discovers other non-compliance that does not explicitly endanger human health, public drinking water supplies, or the environment, the non-compliance shall be reported during the next reporting period to the MPCA with its Discharge Monitoring Report (DMR). If no DMR is required within 30 days, the Permittee shall submit a written report within 30 days of the discovery of the noncompliance. This description shall include the following information:
- a. a description of the event including volume, duration, monitoring results and receiving waters;
 - b. the cause of the event;
 - c. the steps taken to reduce, eliminate and prevent reoccurrence of the event;
 - d. the exact dates and times of the event; and
 - e. steps taken to reduce any adverse impact resulting from the event. (Minn. R. 7001.0150, subp. 3k)
- 1.31 Unauthorized Releases of Wastewater Prohibited. Except for conditions specifically described in Minn. R. 7001.1090, subp. 1, items J and K, all unauthorized bypasses, overflows, discharges, spills, or other releases of wastewater or materials to the environment, whether intentional or not, are prohibited. However, the MPCA will consider the Permittee's compliance with permit requirements, frequency of release, quantity, type, location, and other relevant factors when determining appropriate action. (40 CFR 122.41 and Minn. Stat. Sec 115.061)

DRAFT DRAFT DRAFT DRAFT DRAFT DRAFT DRAFT DRAFT DRAFT DRAFT

Chapter 4. Total Facility Requirements

1. General Requirements

1.32 Discovery of a release. Upon discovery of a release, the Permittee shall:

- a. Take all reasonable steps to immediately end the release.
- b. Notify the Minnesota Department of Public Safety Duty Officer at 1(800)422-0798 or (651)649-5451 (metro area) immediately upon discovery of the release. You may contact the MPCA during business hours at 1(800)657-3864 or (651)296-6300 (metro area).
- c. Recover as rapidly and as thoroughly as possible all substances and materials released or immediately take other action as may be reasonably possible to minimize or abate pollution to waters of the state or potential impacts to human health caused thereby. If the released materials or substances cannot be immediately or completely recovered, the Permittee shall contact the MPCA. If directed by the MPCA, the Permittee shall consult with other local, state or federal agencies (such as the Minnesota Department of Natural Resources and/or the Wetland Conservation Act authority) for implementation of additional clean-up or remediation activities in wetland or other sensitive areas.
- d. Collect representative samples of the release. The Permittee shall sample the release for parameters of concern immediately following discovery of the release. The Permittee may contact the MPCA during business hours to discuss the sampling parameters and protocol. In addition, Fecal Coliform Bacteria samples shall be collected where it is determined by the Permittee that the release contains or may contain sewage. If the release cannot be immediately stopped, the Permittee shall consult with MPCA regarding additional sampling requirements. Samples shall be collected at least, but not limited to, two times per week for as long as the release continues.
- e. Submit the sampling results as directed by the MPCA. At a minimum, the results shall be submitted to the MPCA with the next DMR.

1.33 Upset Defense. In the event of temporary noncompliance by the Permittee with an applicable effluent limitation resulting from an upset at the Permittee's facility due to factors beyond the control of the Permittee, the Permittee has an affirmative defense to an enforcement action brought by the Agency as a result of the noncompliance if the Permittee demonstrates by a preponderance of competent evidence:

- a. The specific cause of the upset;
- b. That the upset was unintentional;
- c. That the upset resulted from factors beyond the reasonable control of the Permittee and did not result from operational error, improperly designed treatment facilities, inadequate treatment facilities, lack of preventative maintenance, or increases in production which are beyond the design capability of the treatment facilities;
- d. That at the time of the upset the facility was being properly operated;
- e. That the Permittee properly notified the Commissioner of the upset in accordance with Minn. R. 7001.1090, subp. 1, item I; and
- f. That the Permittee implemented the remedial measures required by Minn. R. 7001.0150, subp. 3, item J.

Operation and Maintenance

DRAFT DRAFT DRAFT DRAFT DRAFT DRAFT DRAFT DRAFT DRAFT DRAFT

Chapter 4. Total Facility Requirements

1. General Requirements

- 1.34 The Permittee shall at all times properly operate and maintain the facilities and systems of treatment and control, and the appurtenances related to them which are installed or used by the Permittee to achieve compliance with the conditions of the permit. Proper operation and maintenance includes effective performance, adequate funding, adequate operator staffing and training, and adequate laboratory and process controls, including appropriate quality assurance procedures. The Permittee shall install and maintain appropriate backup or auxiliary facilities if they are necessary to achieve compliance with the conditions of the permit and, for all permits other than hazardous waste facility permits, if these backup or auxiliary facilities are technically and economically feasible Minn. R. 7001.0150. subp. 3, item F.
- 1.35 In the event of a reduction or loss of effective treatment of wastewater at the facility, the Permittee shall control production or curtail its discharges to the extent necessary to maintain compliance with the terms and conditions of this permit. The Permittee shall continue this control or curtailment until the wastewater treatment facility has been restored or until an alternative method of treatment is provided. (Minn. R. 7001.1090, subp. 1, item C)
- 1.36 Solids Management. The Permittee shall properly store, transport, and dispose of biosolids, septage, sediments, residual solids, filter backwash, screenings, oil, grease, and other substances so that pollutants do not enter surface waters or ground waters of the state. Solids should be disposed of in accordance with local, state and federal requirements. (40 CFR 503 and Minn. R. 7041 and applicable federal and state solid waste rules)
- 1.37 Scheduled Maintenance. The Permittee shall schedule maintenance of the treatment works during non-critical water quality periods to prevent degradation of water quality, except where emergency maintenance is required to prevent a condition that would be detrimental to water quality or human health. (Minn. R. 7001.0150. subp. 3, item F and Minn. R. 7001.0150. subp. 2, item B)
- 1.38 Control Tests. In-plant control tests shall be conducted at a frequency adequate to ensure compliance with the conditions of this permit. (Minn. R. 7001.0150. subp. 3, item F and Minn. R. 7001.0150. subp. 2, item B)

Changes to the Facility or Permit

- 1.39 Permit Modifications. Except as provided under Minnesota Statutes, section 115.07, subdivisions 1 and 3, no person required by statute or rule to obtain a permit may construct, install, modify, or operate the facility to be permitted, nor shall a person commence an activity for which a permit is required by statute or rule until the agency has issued a written permit for the facility or activity. (Minn. R. 7001.0030)

Permittees that propose to make a change to the facility or discharge that requires a permit modification must follow Minn. R. 7001.0190. If the Permittee cannot determine whether a permit modification is needed, the Permittee must contact the MPCA prior to any action. It is recommended that the application for permit modification be submitted to the MPCA at least 180 days prior to the planned change.

- 1.40 No person required by statute or rule to obtain a permit may construct, install, modify, or operate the facility to be permitted except as provided under Minnesota Statutes, section 115.07, subdivisions 1 and 3, nor shall a person commence an activity for which a permit is required by statute or rule until the agency has issued a written permit for the facility or activity.
- 1.41 Plans, specifications and MPCA approval are not necessary when maintenance dictates the need for installation of new equipment, provided the equipment is the same design size and has the same design intent. For instance, a broken pipe, lift station pump, aerator, or blower can be replaced with the same design-sized equipment without MPCA approval.

If the proposed construction is not expressly authorized by this permit, it may require a permit modification. If the construction project requires an Environmental Assessment Worksheet under Minn. R. 4410, no construction shall begin until a negative declaration is issued and all approvals are received or implemented.

DRAFT DRAFT DRAFT DRAFT DRAFT DRAFT DRAFT DRAFT DRAFT DRAFT

Chapter 4. Total Facility Requirements

1. General Requirements

- 1.42 Report Changes. The Permittee shall give advance notice as soon as possible to the MPCA of any substantial changes in operational procedures, activities that may alter the nature or frequency of the discharge, and/or material factors that may affect compliance with the conditions of this permit. (Minn. R. 7001.0150, subp. 3, item M)
- 1.43 Chemical Additives. The Permittee shall receive prior written approval from the MPCA before increasing the use of a chemical additive authorized by this permit, or using a chemical additive not authorized by this permit, in quantities or concentrations that have the potential to change the characteristics, nature and/or quality of the discharge.

The Permittee shall request approval for an increased or new use of a chemical additive at least 60 days, or as soon as possible, before the proposed increased or new use.

This written request shall include at least the following information for the proposed additive:

- a. The process for which the additive will be used;
 - b. Material Safety Data Sheet (MSDS) which shall include aquatic toxicity, human health, and environmental fate information for the proposed additive. The aquatic toxicity information shall include at minimum the results of: a) a 48-hour LC50 or EC50 acute study for a North American freshwater planktonic crustacean (either Ceriodaphnia or Daphnia sp.) and b) a 96-hour LC50 acute study for rainbow trout, bluegill or fathead minnow or another North American freshwater aquatic species other than a planktonic crustacean;
 - c. A complete product use and instruction label;
 - d. The commercial and chemical names and Chemical Abstract Survey (CAS) number for all ingredients in the additive (If the MSDS does not include information on chemical composition, including percentages for each ingredient totaling to 100%, the Permittee shall contact the supplier to have this information provided); and
 - e. The proposed method of application, application frequency, concentration, and daily average and maximum rates of use. (Minn. R. 7001.0170)
- 1.44 Upon review of the information submitted regarding the proposed chemical additive, the MPCA may require additional information be submitted for consideration. This permit may be modified to restrict the use or discharge of a chemical additive and include additional influent and effluent monitoring requirements.
- Approval for the use of an additive shall not justify the exceedance of any effluent limitation nor shall it be used as a defense against pollutant levels in the discharge causing or contributing to the violation of a water quality standard.
- 1.45 MPCA Initiated Permit Modification, Suspension, or Revocation. The MPCA may modify or revoke and reissue this permit pursuant to Minn. R. 7001.0170. The MPCA may revoke without reissuance this permit pursuant to Minn. R. 7001.0180.
- 1.46 TMDL Impacts. Facilities that discharge to an impaired surface water, watershed or drainage basin may be required to comply with additional permits or permit requirements, including additional restriction or relaxation of limits and monitoring as authorized by the CWA 303(d)(4)(A) and 40 CFR 122.44.1.2.i., necessary to ensure consistency with the assumptions and requirements of any applicable US EPA approved wasteload allocations resulting from Total Maximum Daily Load (TMDL) studies.
- 1.47 Permit Transfer. The permit is not transferable to any person without the express written approval of the Agency after compliance with the requirements of Minn. R. 7001.0190. A person to whom the permit has been transferred shall comply with the conditions of the permit. (Minn. R., 7001.0150, subp. 3, item N)

DRAFT DRAFT DRAFT DRAFT DRAFT DRAFT DRAFT DRAFT DRAFT DRAFT

Chapter 4. Total Facility Requirements

1. General Requirements

- 1.48 Facility Closure. The Permittee is responsible for closure and post-closure care of the facility. The Permittee shall notify the MPCA of a significant reduction or cessation of the activities described in this permit at least 180 days before the reduction or cessation. The MPCA may require the Permittee to provide to the MPCA a facility Closure Plan for approval.

Facility closure that could result in a potential long-term water quality concern, such as the ongoing discharge of wastewater to surface or ground water, may require a permit modification or reissuance.

The MPCA may require the Permittee to establish and maintain financial assurance to ensure performance of certain obligations under this permit, including closure, post-closure care and remedial action at the facility. If financial assurance is required, the amount and type of financial assurance, and proposed modifications to previously MPCA-approved financial assurance, shall be approved by the MPCA. (Minn. Stat. Sec. 116.07, subd. 4)

- 1.49 Permit Reissuance. If the Permittee desires to continue permit coverage beyond the date of permit expiration, the Permittee shall submit an application for reissuance at least 180 days before permit expiration. If the Permittee does not intend to continue the activities authorized by this permit after the expiration date of this permit, the Permittee shall notify the MPCA in writing at least 180 days before permit expiration.

If the Permittee has submitted a timely application for permit reissuance, the Permittee may continue to conduct the activities authorized by this permit, in compliance with the requirements of this permit, until the MPCA takes final action on the application, unless the MPCA determines any of the following (Minn. R. 7001.0040 and 7001.0160):

- a. The Permittee is not in substantial compliance with the requirements of this permit, or with a stipulation agreement or compliance schedule designed to bring the Permittee into compliance with this permit;
- b. The MPCA, as a result of an action or failure to act by the Permittee, has been unable to take final action on the application on or before the expiration date of the permit;
- c. The Permittee has submitted an application with major deficiencies or has failed to properly supplement the application in a timely manner after being informed of deficiencies.