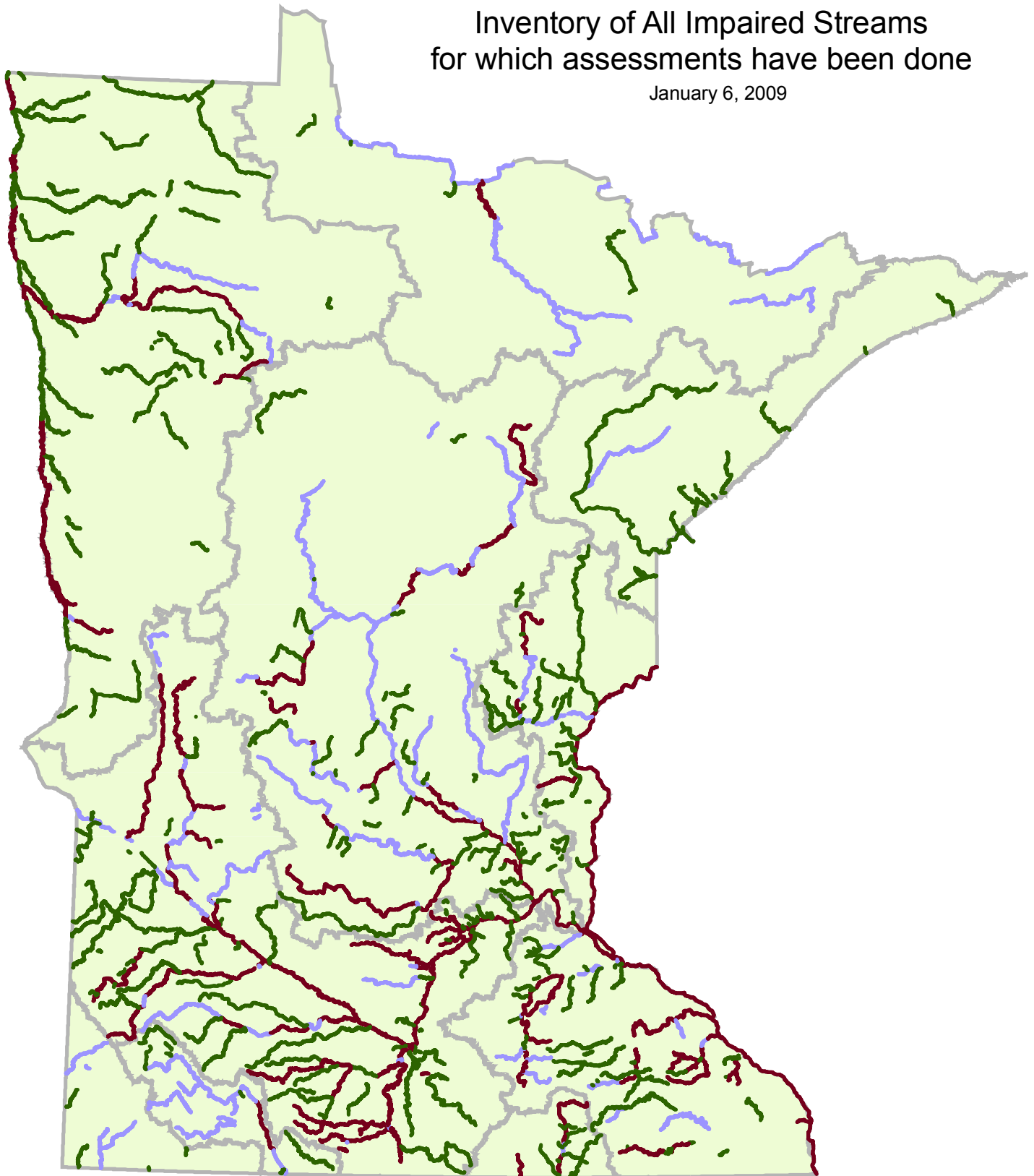


# Inventory of All Impaired Streams for which assessments have been done

January 6, 2009



## Legend

- TMDL needed for one or more pollutants
- At least one approved TMDL, still needs additional TMDL approval(s)
- All required TMDLs have been approved or impairment is caused by natural sources

 Basin



More information about impaired waters is available at <http://www.pca.state.mn.us/water/tmdl/tmdl-303dlist.html>