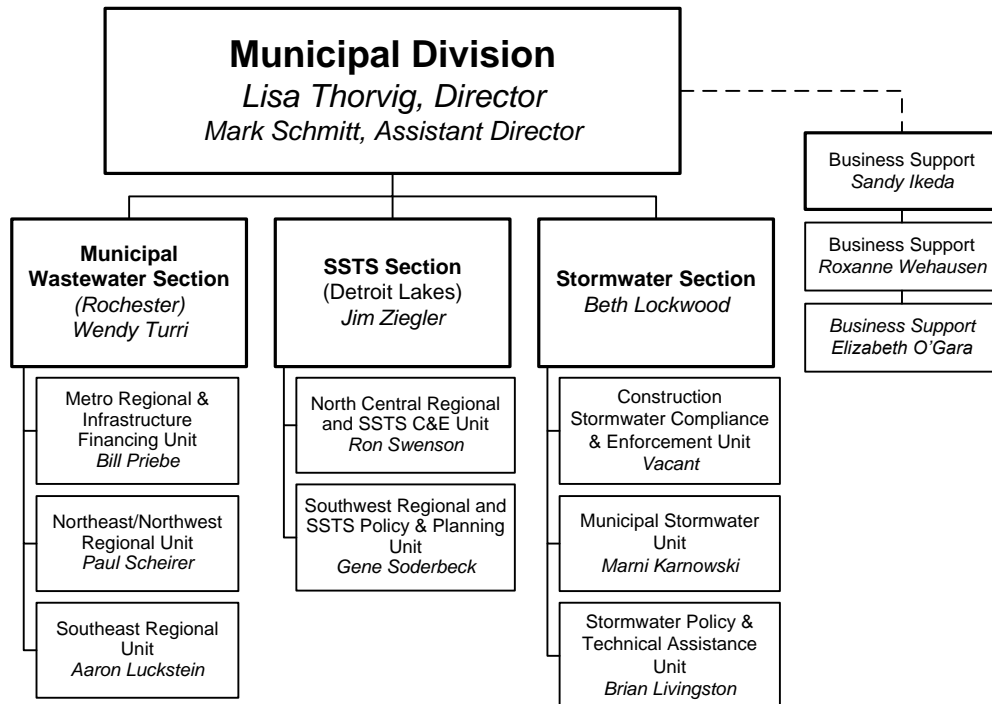




**Minnesota  
Pollution  
Control  
Agency**



The MPCA's Municipal Division works with cities and towns to ensure proper management of wastewater and stormwater to help protect the environment and citizens. Work includes technical assistance, development of rules and policy, permitting, and compliance and enforcement.

Use the links below to learn more about some of the programs operated in this division.

- [Stormwater](#)
- [Wastewater](#)