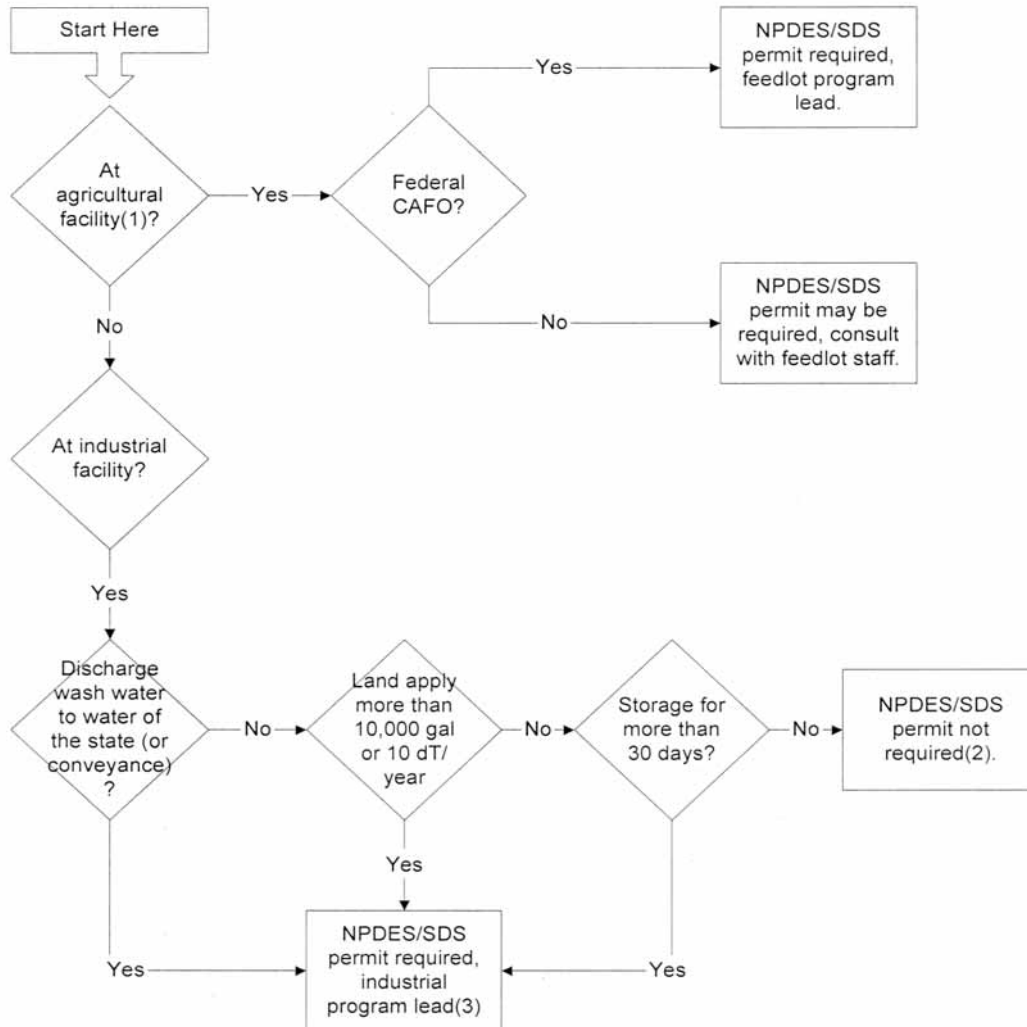




Decision Tree: Permitting of Truck Wash Water  
5/2/08, J. Rantala



- (1) "Agricultural facility" is intended to exclude distribution centers and other facilities that are inherently industrial in nature.  
(2) Land apply wastewater and/or solids and store liquid manure and/or manure in accordance with Minn. R. 7020.  
(3) Industrial permit would contain provisions for discharge, if appropriate, and land application provisions would incorporate the land application standards of Minn. R. 7020 (sampling, analytes, setbacks, structure standards).