

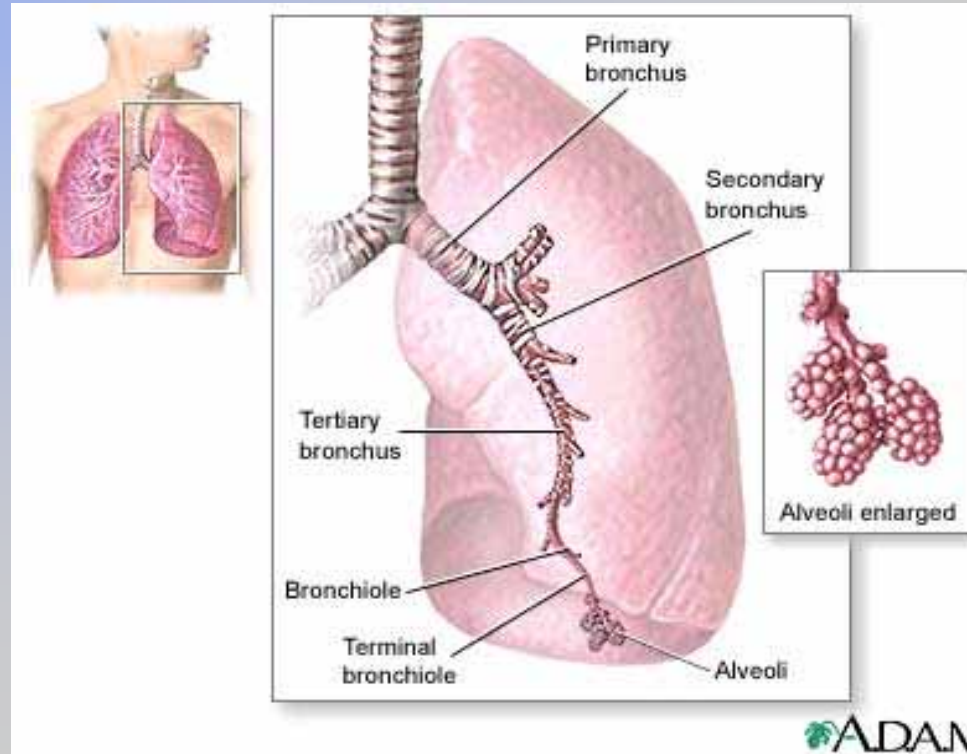
Asthma in Minnesota

Wendy Brunner
Asthma Program
Minnesota Department of Health

October 12, 2009

Asthma

- Chronic respiratory disease
- Bronchoconstriction
- Inflammation





Common Symptoms of Asthma

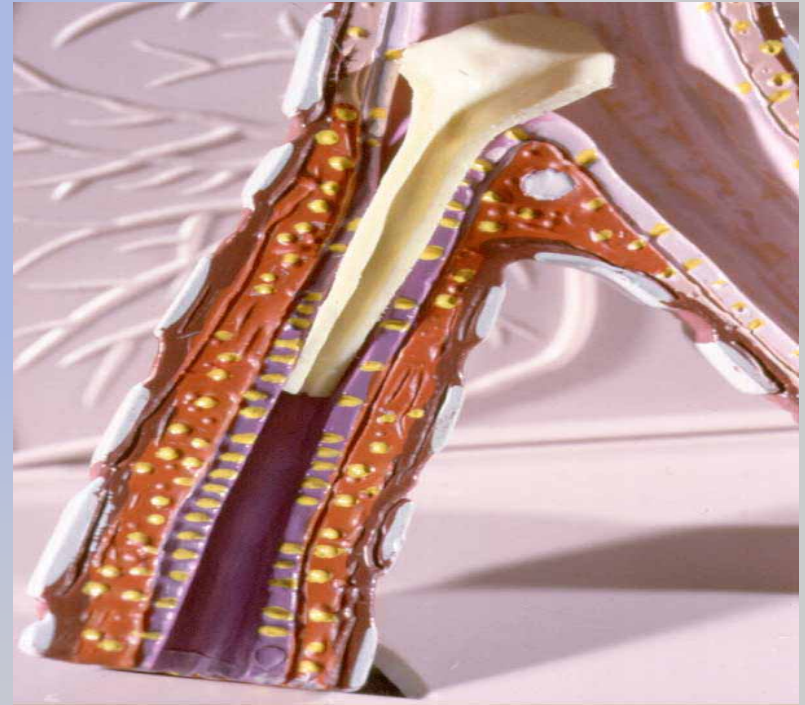
- Frequent cough, especially at night
- Shortness of breath or rapid breathing
- Chest tightness
- Chest pain
- Wheezing
- Fatigue

Airway Obstruction

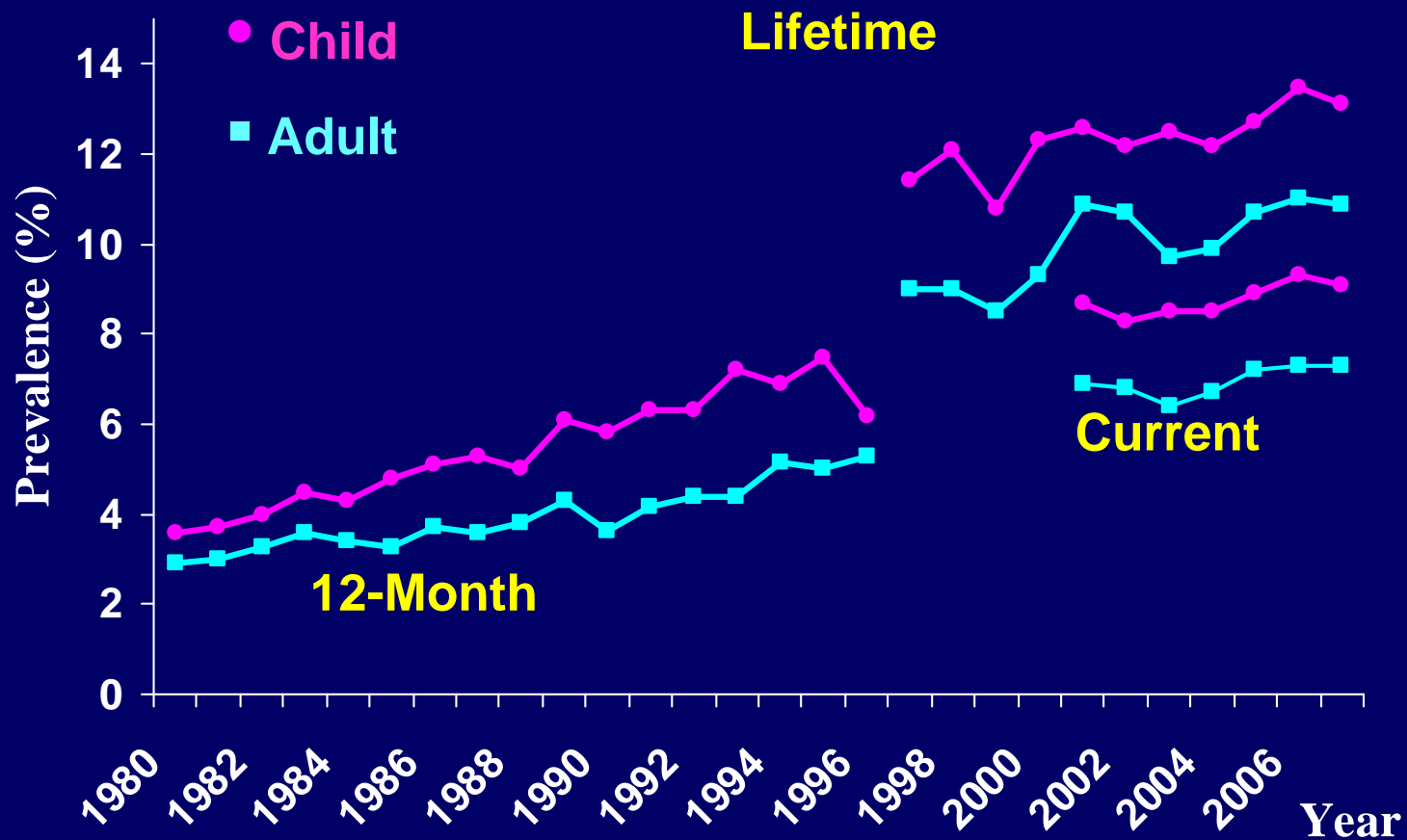
Normal Bronchiole



Inflamed Bronchiole
with Mucus



Child and Adult Asthma Prevalence United States, 1980-2007



Source: National Health Interview Survey; CDC National Center for Health Statistics



Causes of Asthma

- Genetics
- Environmental exposures
 - *Sufficient evidence for causal relationship:* house dust mites
 - *Sufficient evidence for an association:* environmental tobacco smoke (pre-school children)
 - *Limited/suggestive evidence for an association:* cockroach (pre-school children), respiratory syncytial virus (RSV)
- “Hygiene hypothesis”

Common Triggers - Allergens

- Pollen
- Animal dander saliva/urine
- Dust mites
- Cockroach/mice/rat droppings and urine
- Mold
- Some medications (e.g., aspirin)
- Some foods

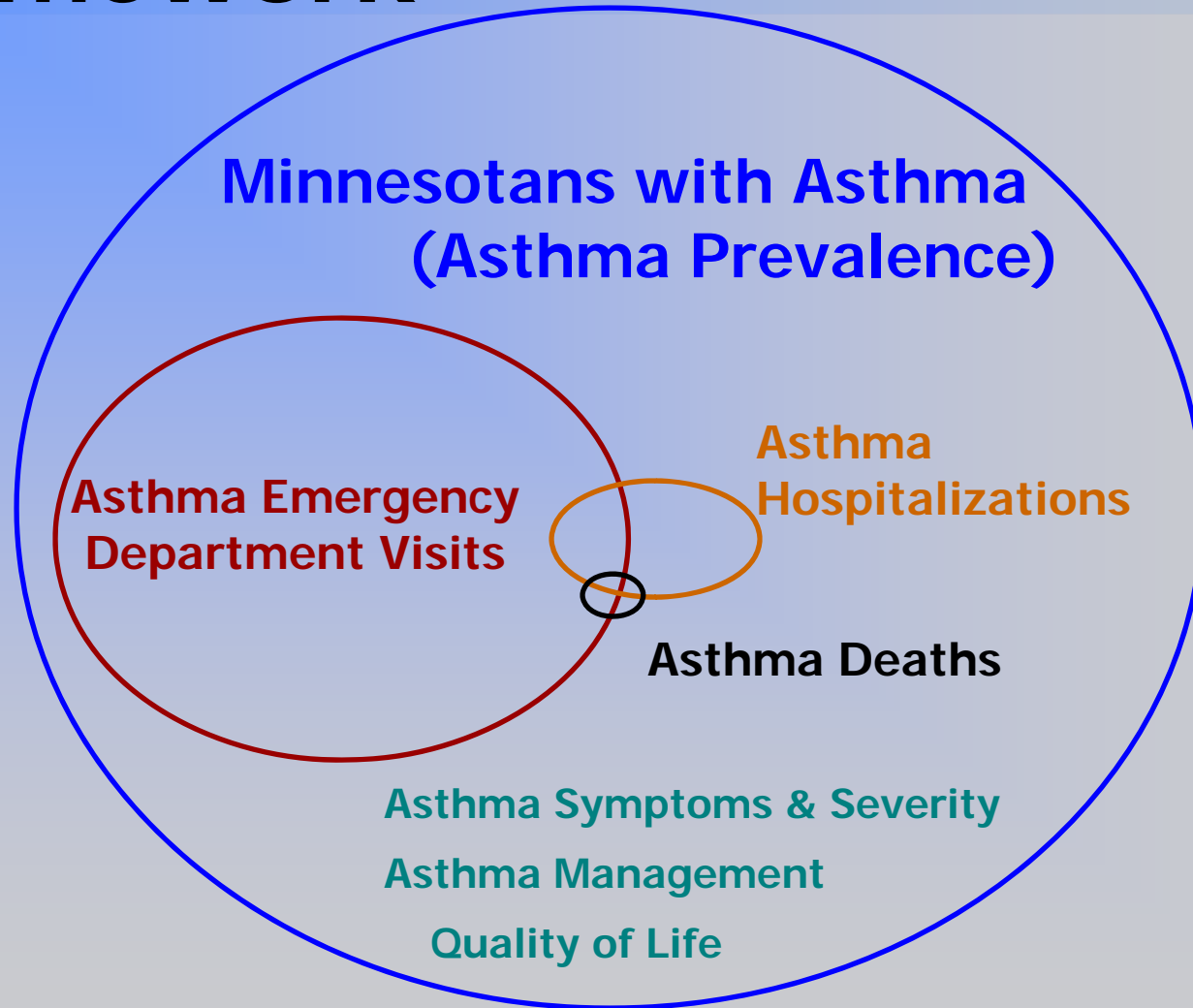
Common Triggers - Irritants

- Exercise
- Cold air
- **Viral/upper respiratory infections**
- Air pollution
- Tobacco smoke or secondhand smoke
- Chemical irritants and strong smells
- Strong emotional feelings
- Diesel fumes

Asthma – Key Points

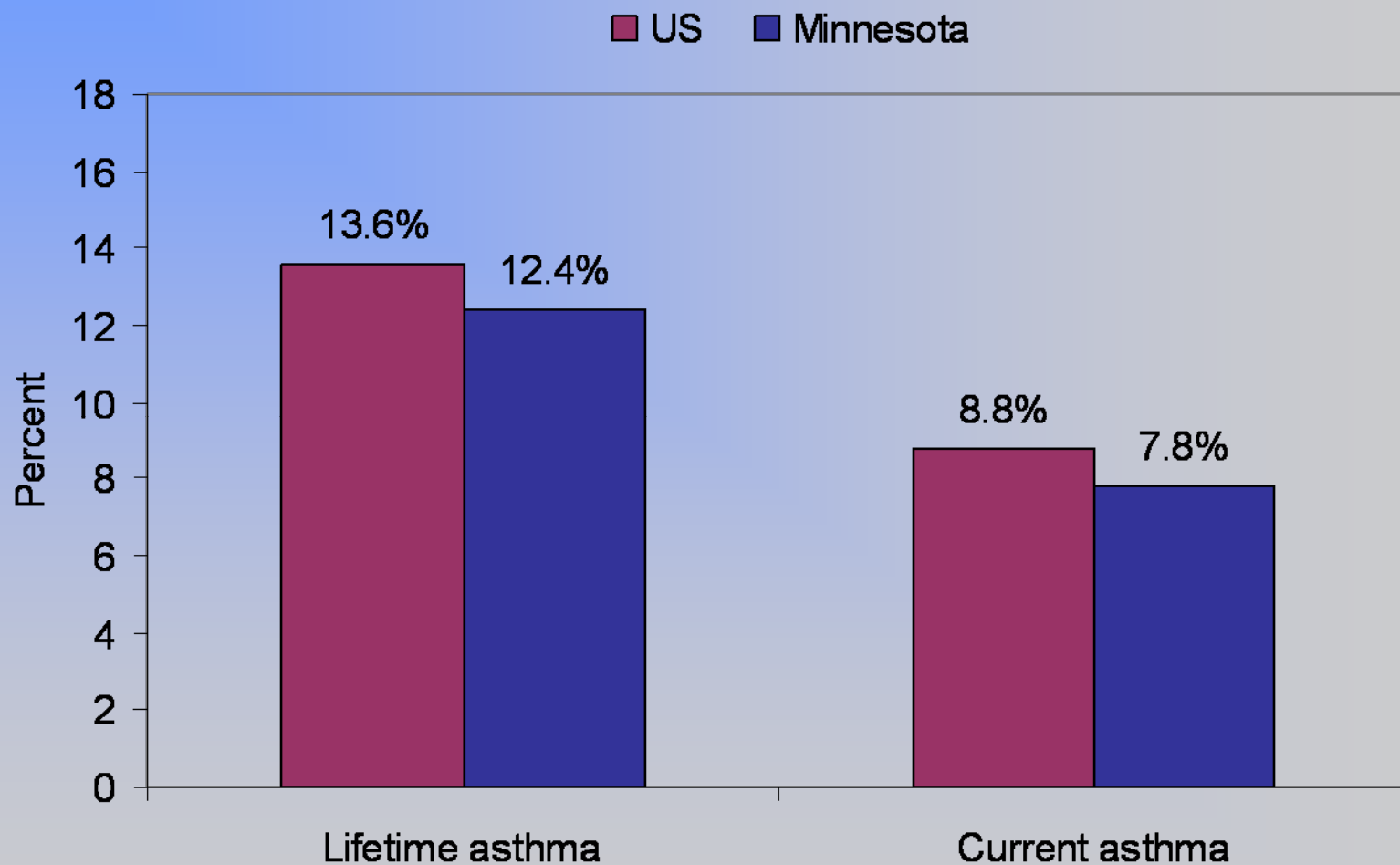
- Chronic disease with acute components (asthma episodes)
- Factors that cause asthma to develop are unknown
- Asthma episodes can be caused by exposures to triggers

Asthma Surveillance Framework



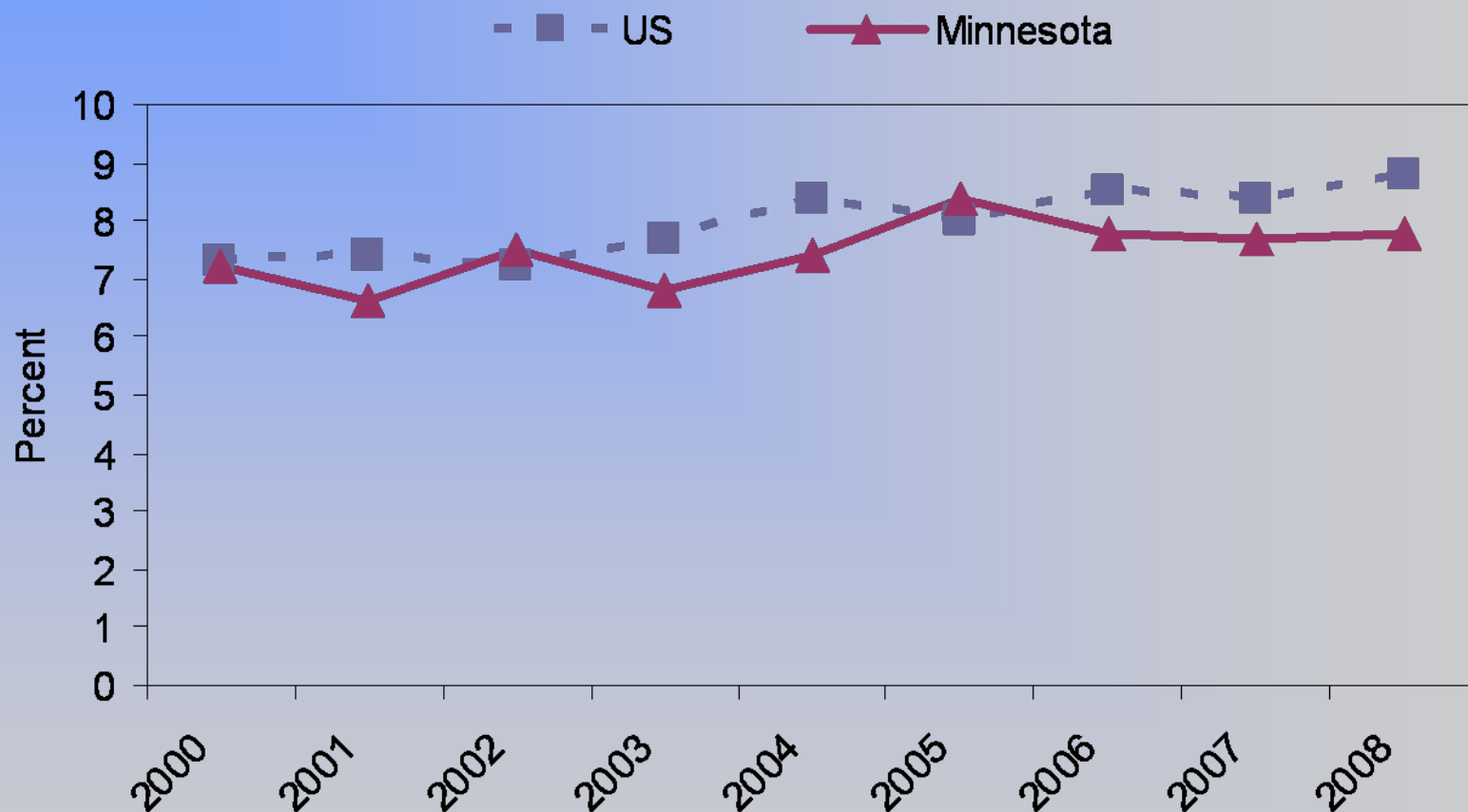
Asthma Prevalence

Asthma Prevalence, Minnesota and U.S. Adults, 2008



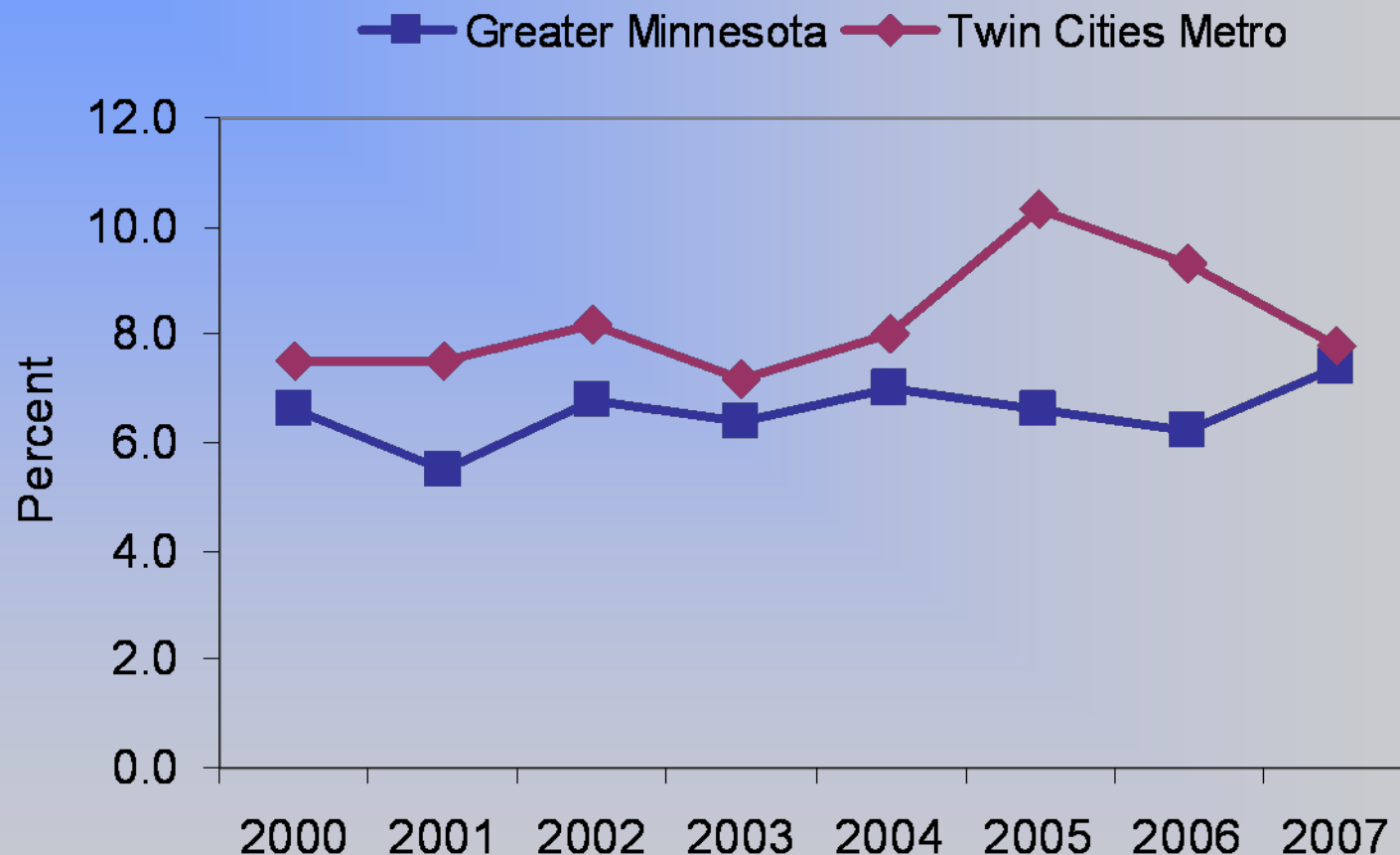
Source: Behavioral Risk Factor Surveillance System

Current Asthma Prevalence, Minnesota and U.S. Adults, 2000-2008



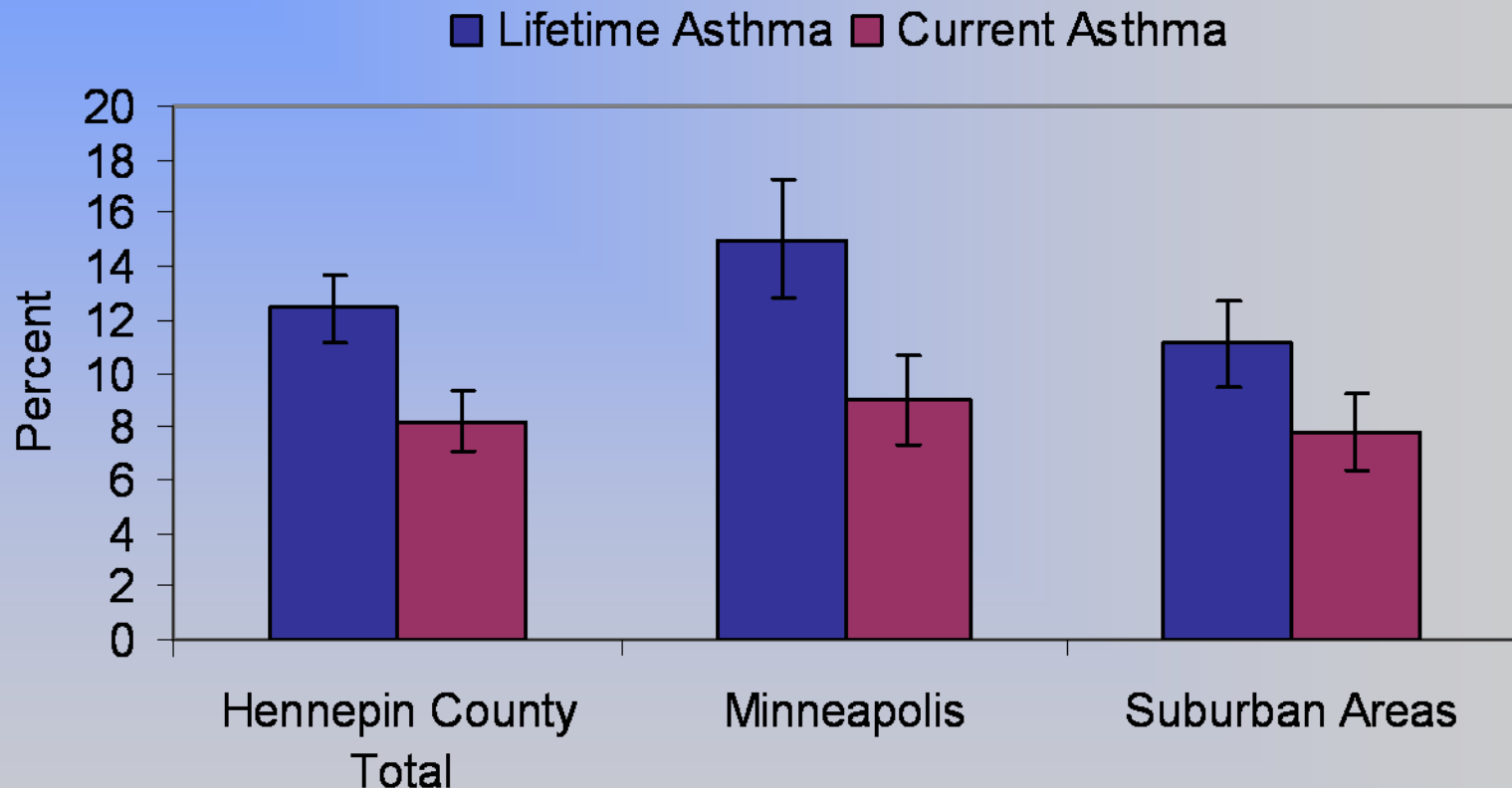
Source: Behavioral Risk Factor Surveillance System

Current Asthma Prevalence by Residence, Minnesota Adults, 2000-2007



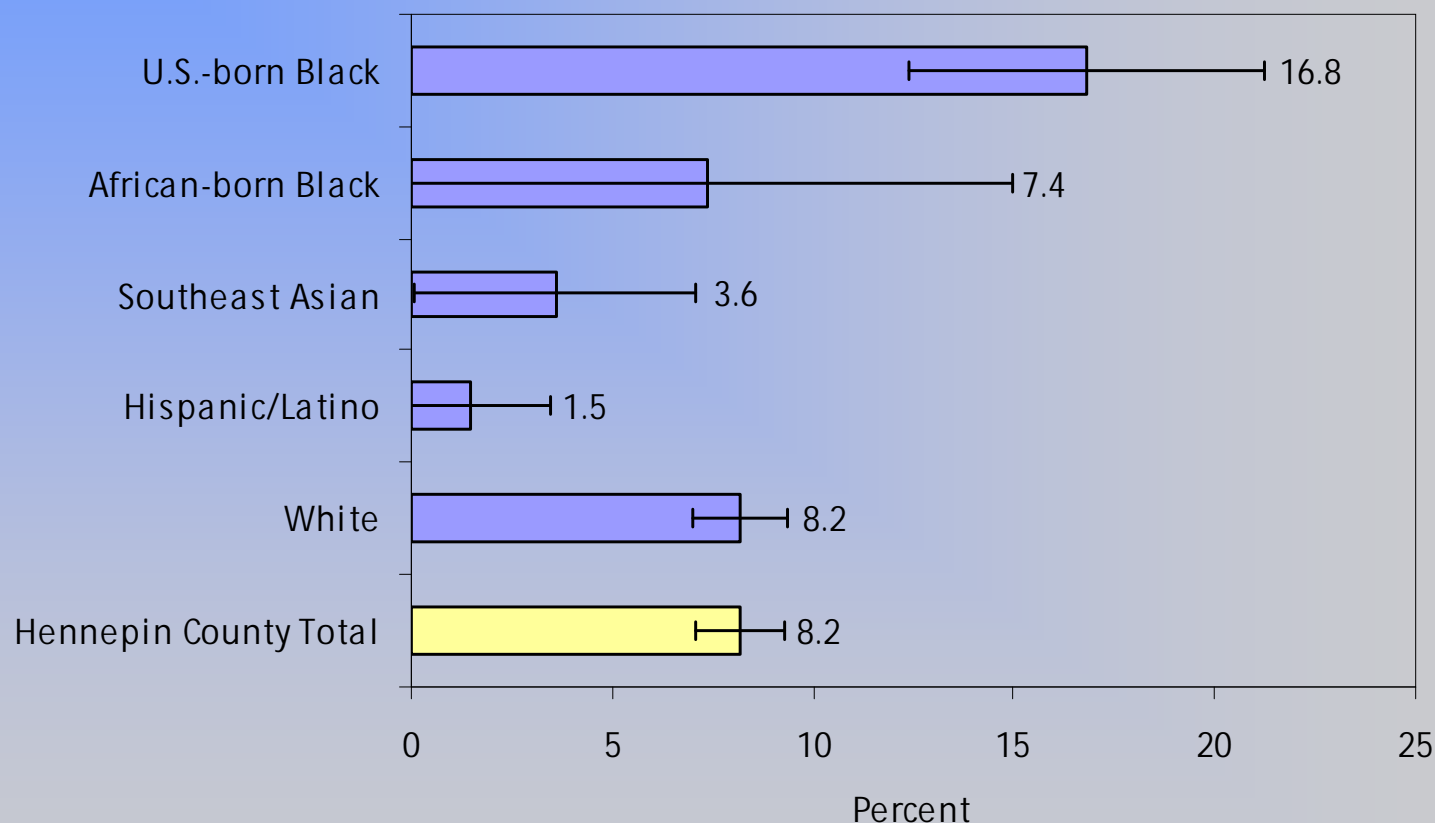
Source: Behavioral Risk Factor Surveillance System

Lifetime and Current Asthma, Adults, Hennepin County, 2006



Data source: Hennepin County: SHAPE 2006

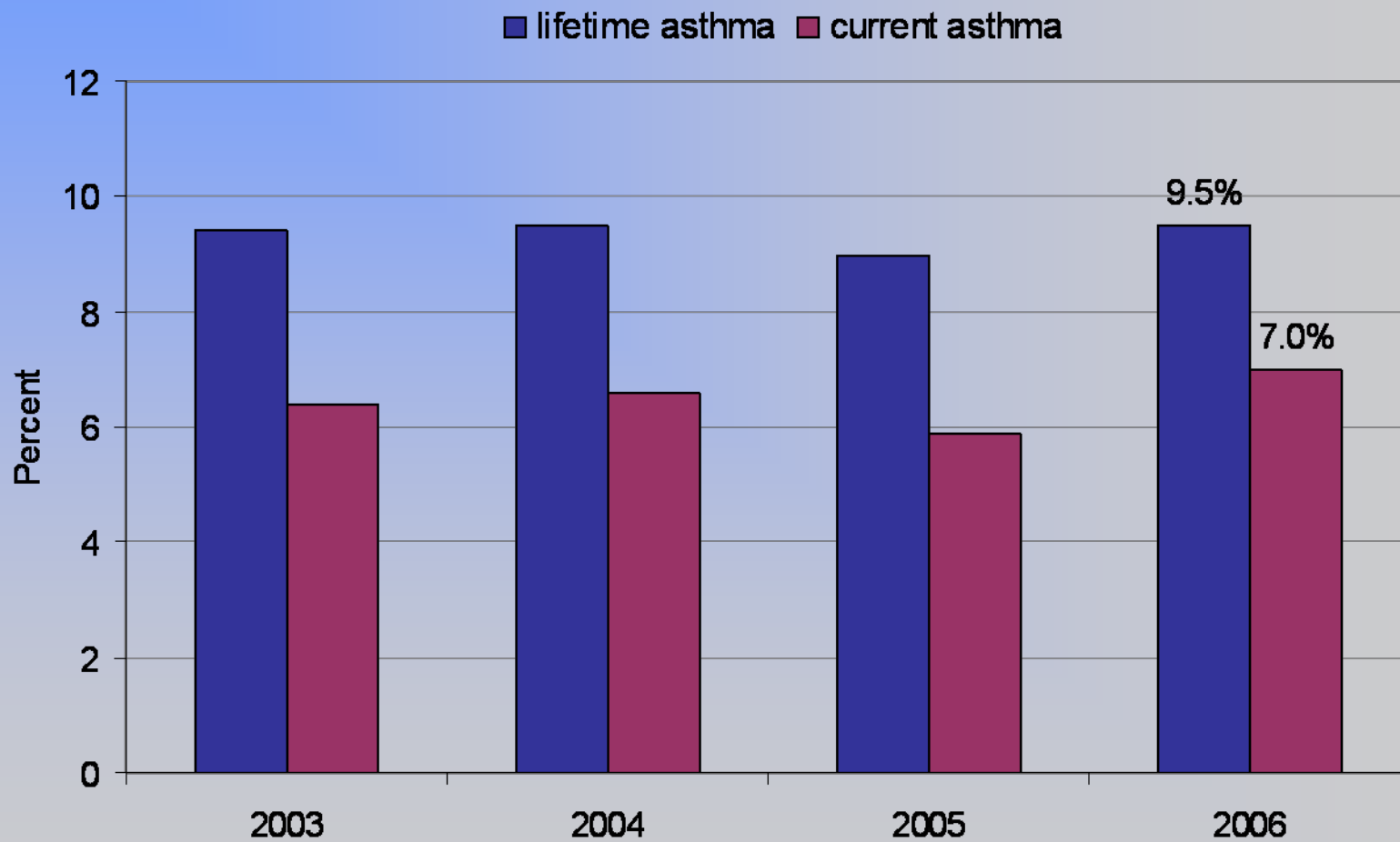
Current Asthma Rates Among Adults by Racial and Ethnic Groups, Hennepin County, 2006



Notes: Hispanic/Latino ethnicity and race are mutually exclusive.
The race presents the primary racial designation.

Source: SHAPE 2006.

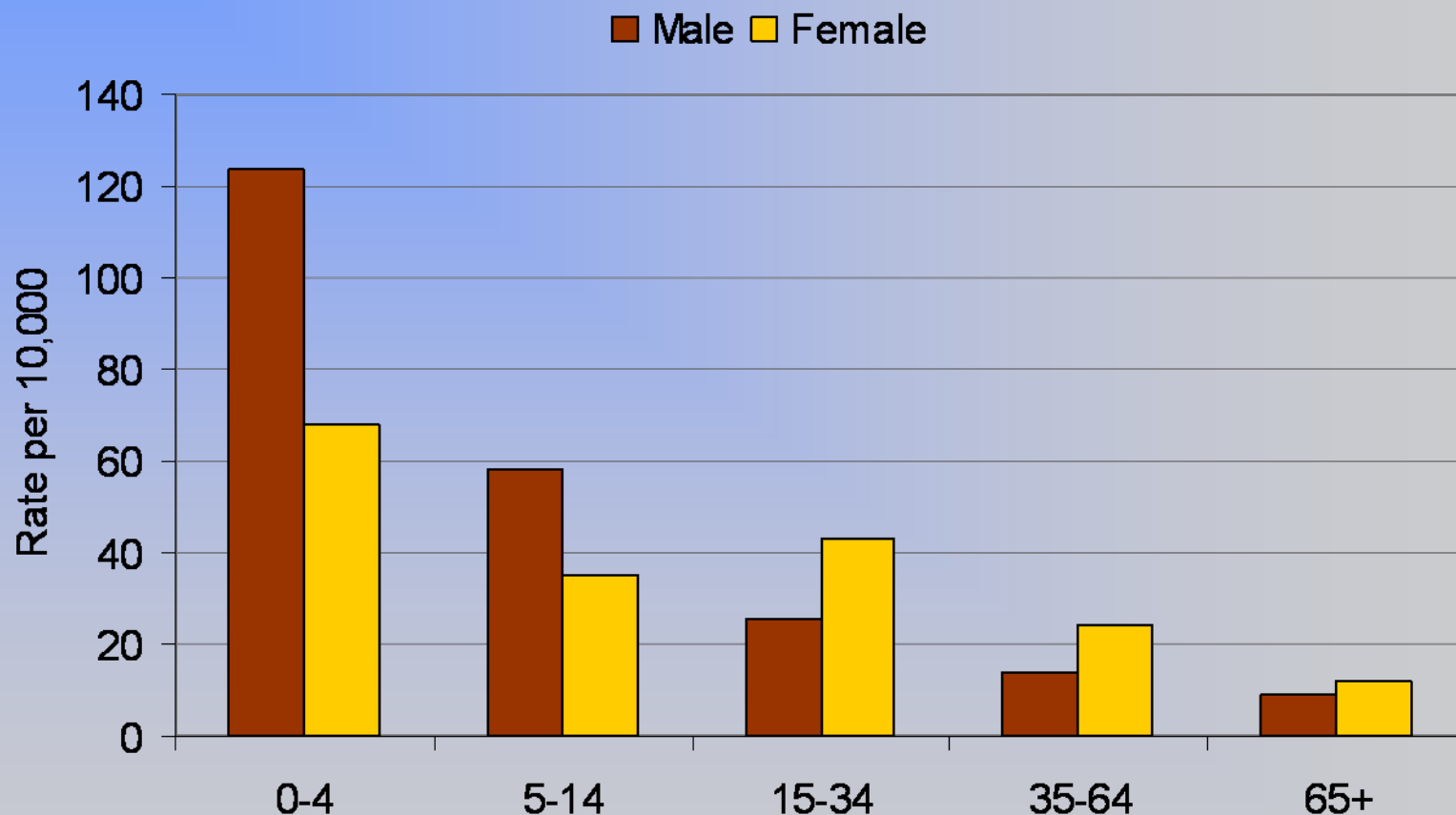
Asthma Prevalence, Minnesota Children, 2003-2006



Source: Behavioral Risk Factor Surveillance System

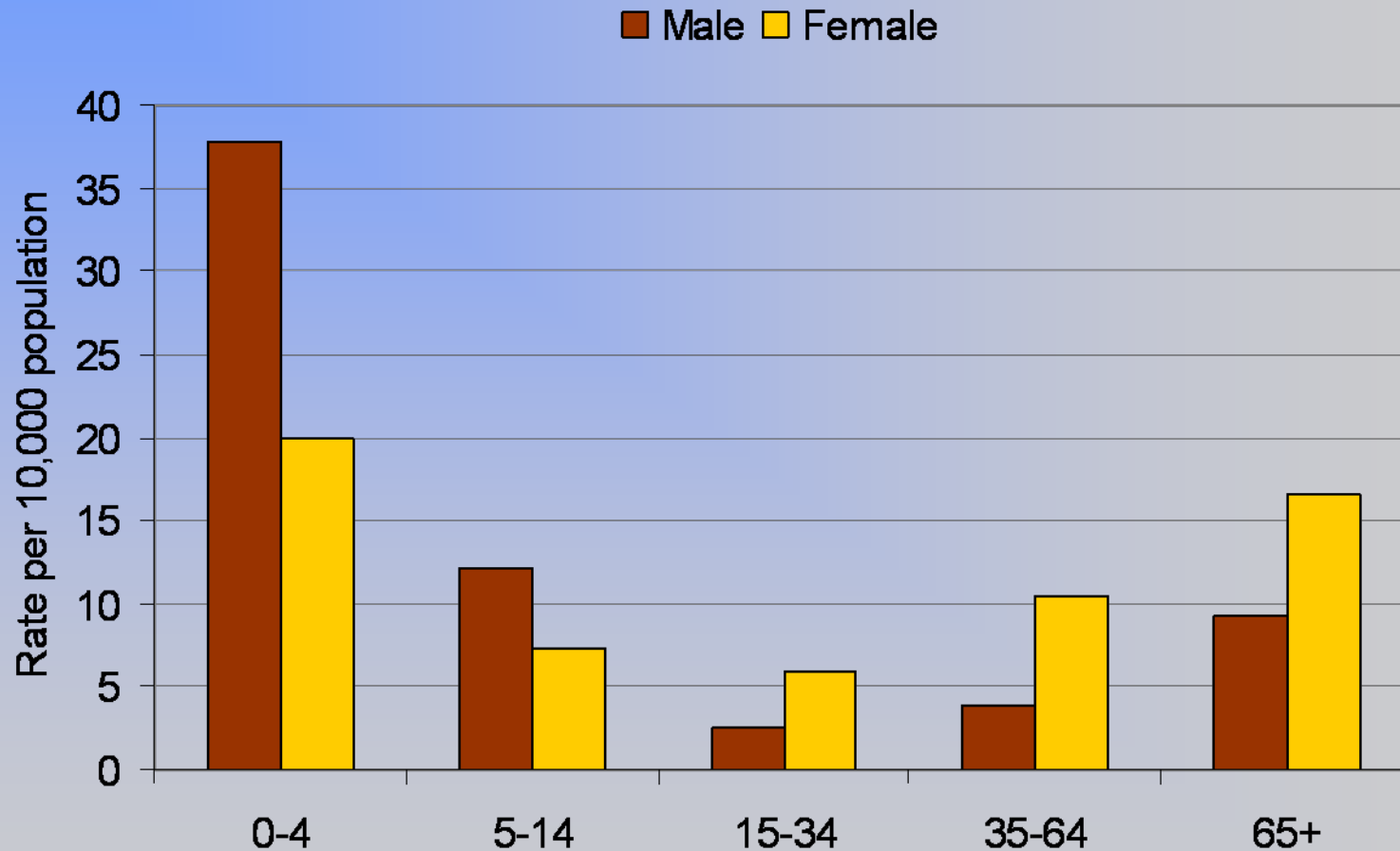
Asthma Hospitalizations & Emergency Department Visits

Asthma Emergency Department Visit Rates by Age and Sex, Minnesota, 2007



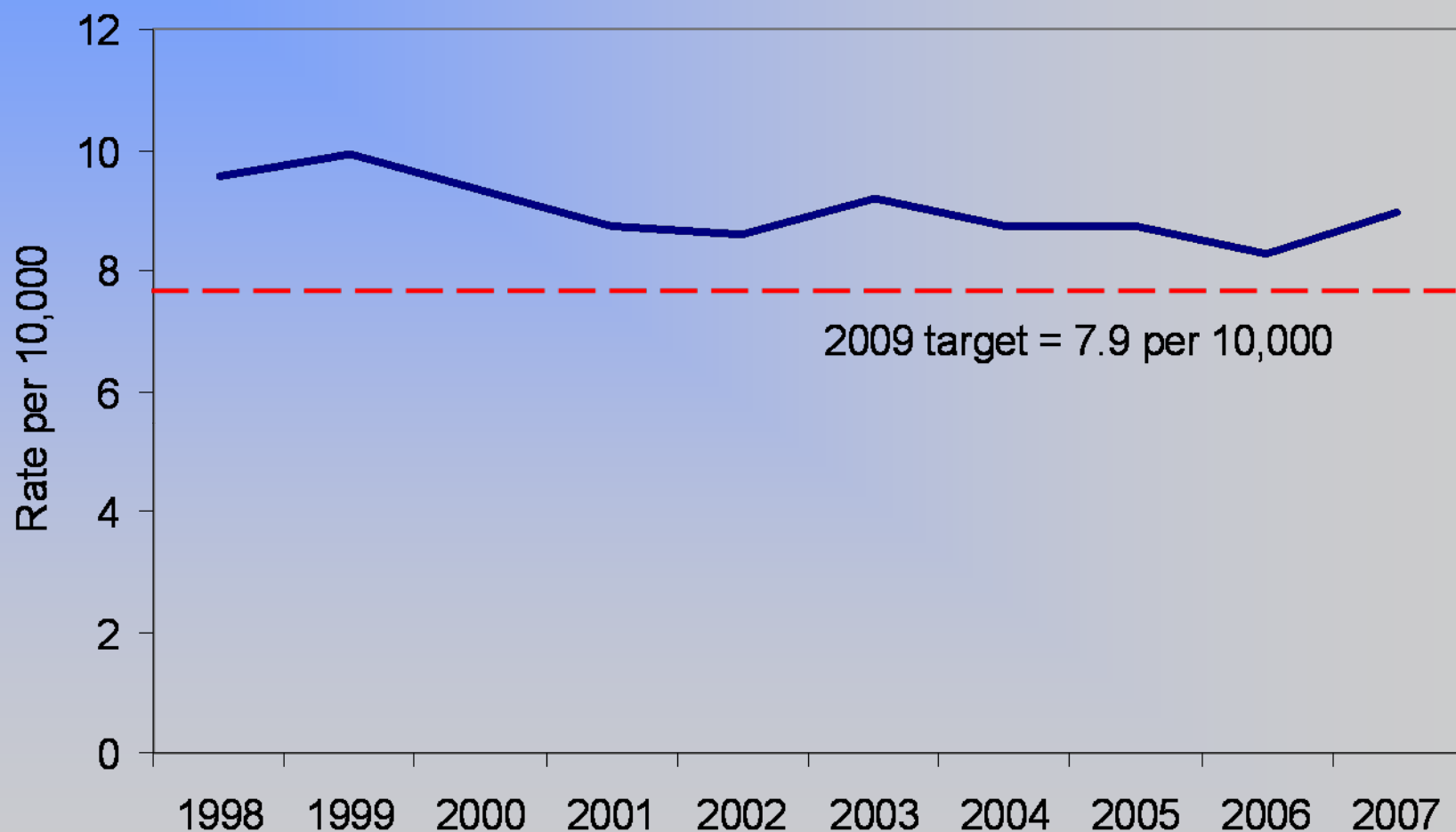
Source: Minnesota Hospital Association

Asthma Hospitalization Rates by Age and Sex, Minnesota, 2007



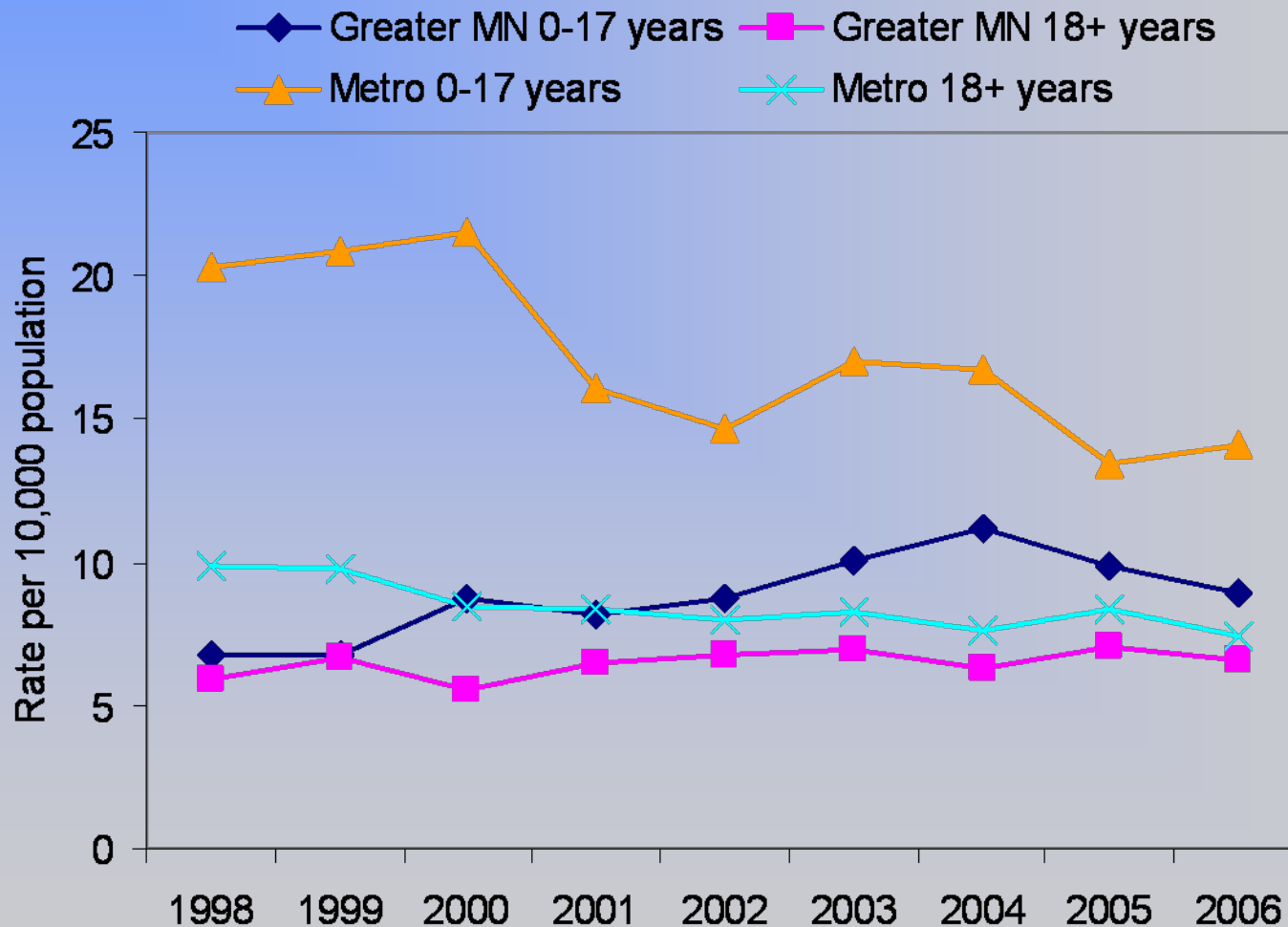
Source: Minnesota Hospital Association

Age-Adjusted Asthma Hospitalization Rates, Minnesota, 1998-2007



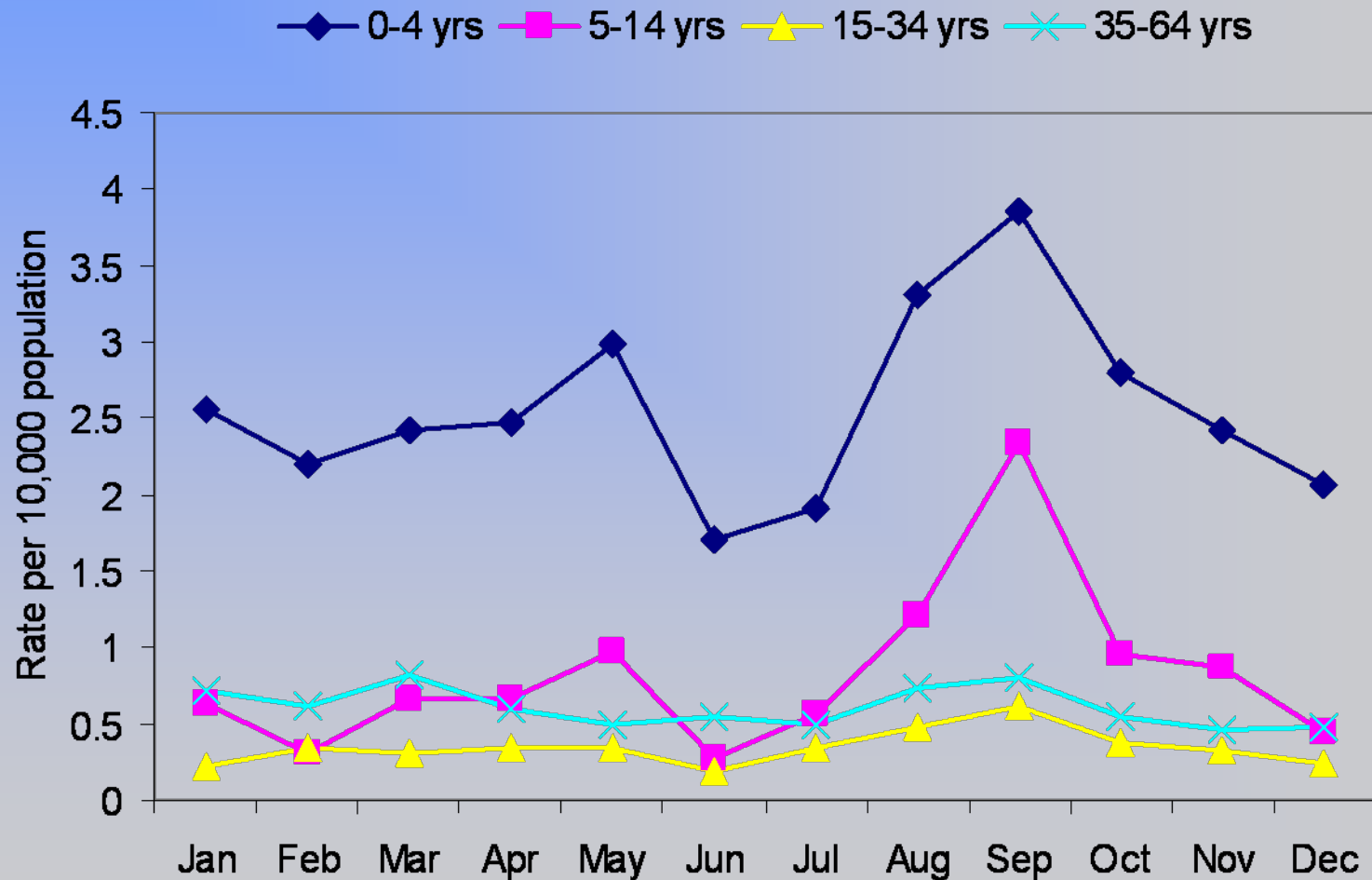
Source: Minnesota Hospital Association

Asthma Hospitalization Rates by Age Group and Region, 1998-2006



Source: Minnesota Hospital Association

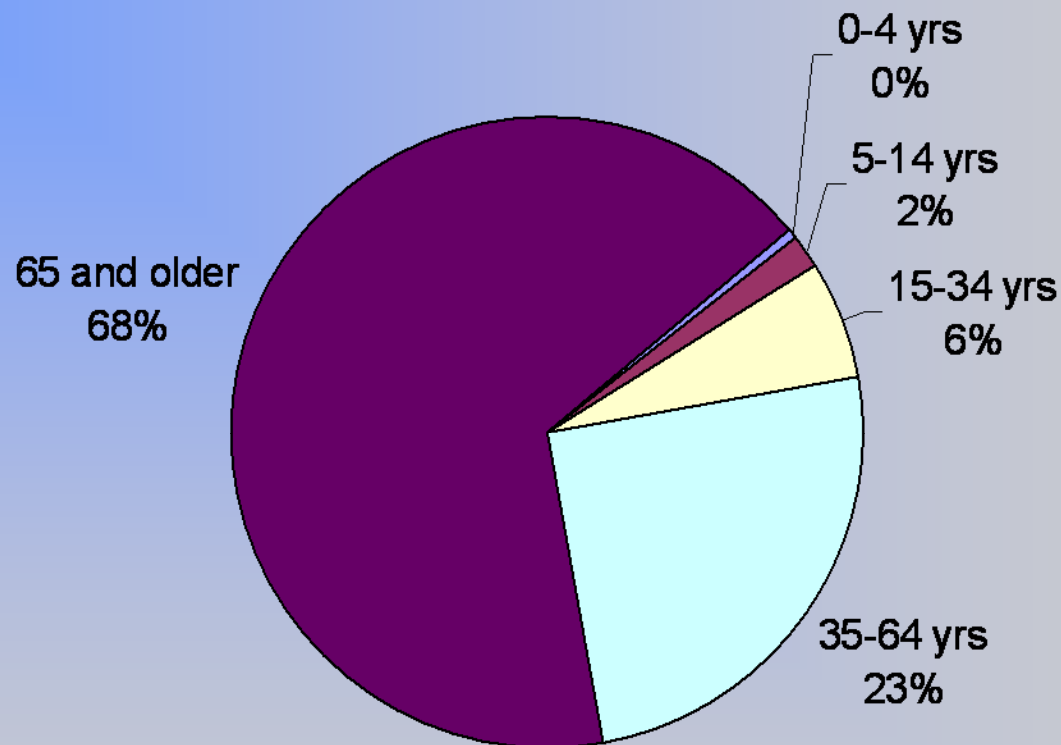
Seasonal Variations in Asthma Hospitalizations, Minnesota, 2007



Source: Minnesota Hospital Association

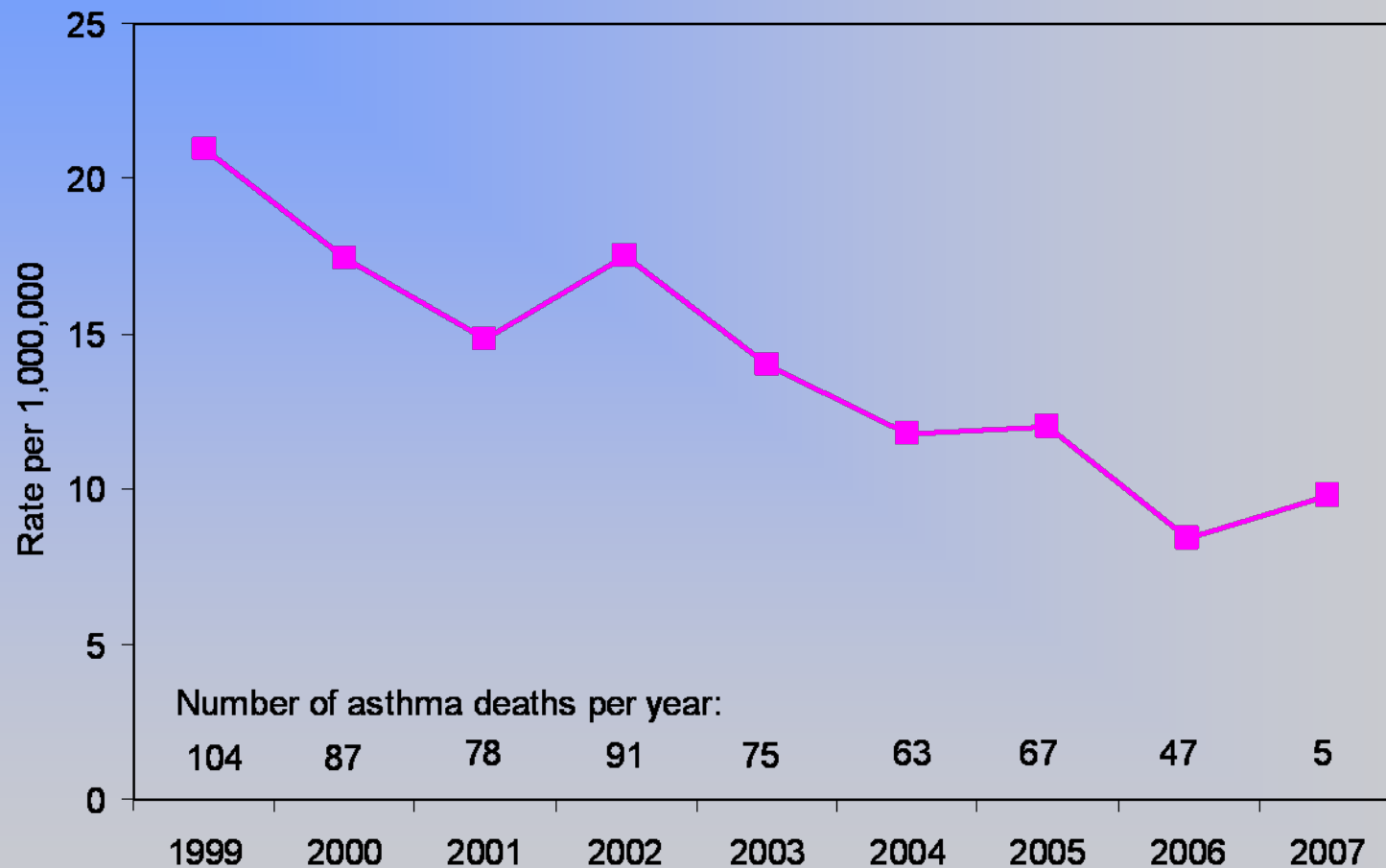
Asthma Mortality

Asthma Mortality by Age, Minnesota, 2003-2007



Source: Minnesota Center for Health Statistics

Age-Adjusted Asthma Mortality Rates, Minnesota, 1990-2007



Source: Minnesota Center for Health Statistics

Special Topics

Environment

Air pollutants, such as smog, automobile exhaust and chemicals, may cause poor outdoor air quality, and on some days, result in air quality alerts or advisories.

Have you ever heard of air quality alerts or advisories in the area where you live?

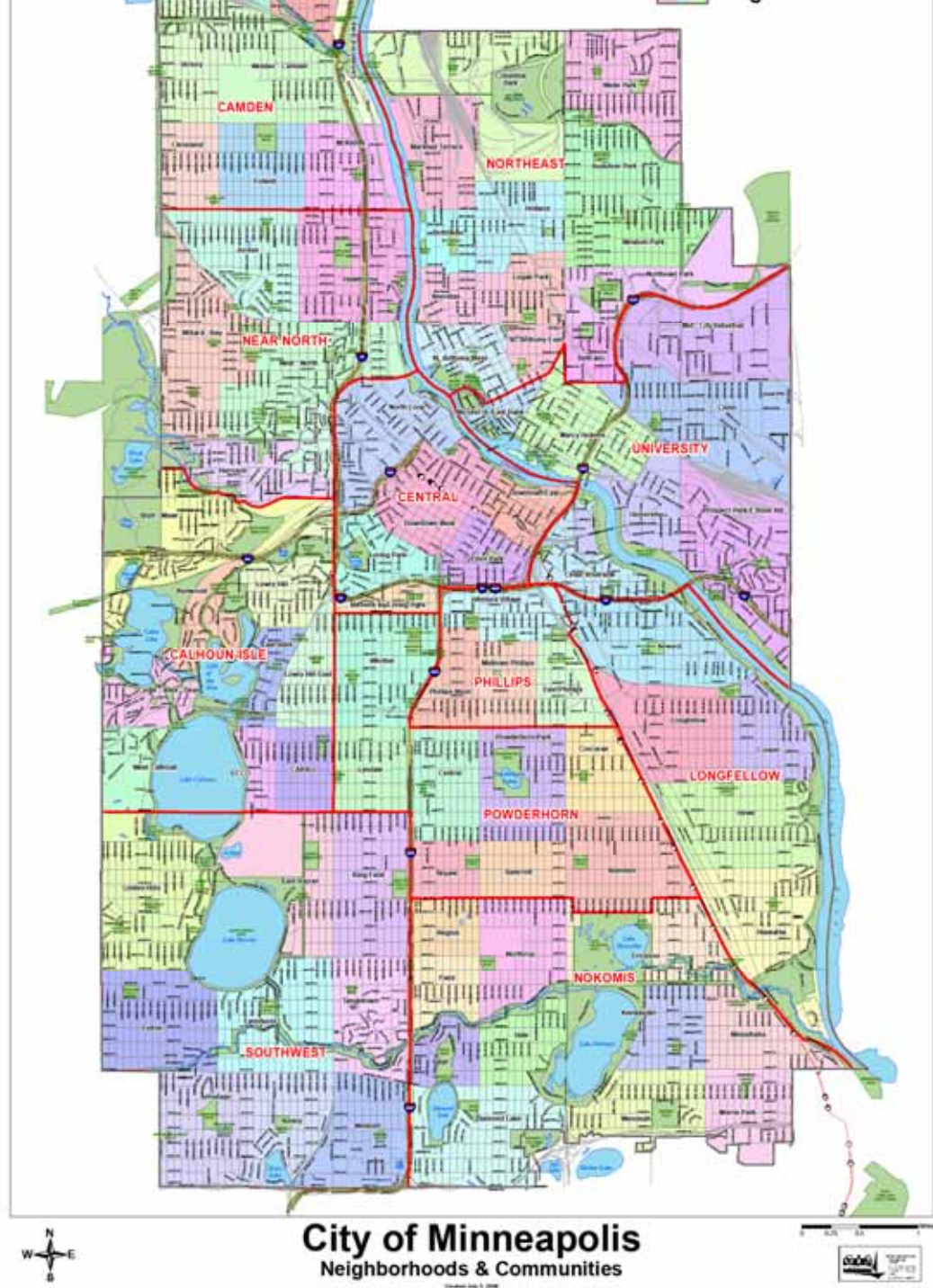
Yes: 46.3% of Minnesota adults

Source: Behavioral Risk Factor Surveillance System, 2005

Using Asthma Data to Respond to Environmental Concerns

Responding to Environmental Concerns

- Wood smoke, outdoor wood boilers
- Avon wood-finishing facility
- Eyota ethanol facility
- Midtown Eco-Energy project





Estimated percentage of adults (age 18 and older) who have asthma

	Phillips neighborhood	Minneapolis	Hennepin Co.	Minnesota
Current asthma	8.1%±2.6	8.5%±1.1	7.6%±1.0	7.7%

Notes: ± = 95% confidence intervals (margin of error)

Current asthma = Yes to: "Has a doctor or other health professional ever told you that you had asthma?" and "Do you still have asthma?"

Sources: SHAPE 2002, Hennepin County Human Services and Public Health Department Behavioral Risk Factor Surveillance System, 2007

Estimated percentage of children (age 0-17) who have asthma

	Central (Powderhorn/ Phillips)	Minneapolis	Hennepin Co.	Minnesota
Current asthma	9.4%	10.0%	9.4%	6.6%

Current asthma = Yes to both: Has a doctor ever told you that your child has asthma? and Does your child still have

Sources: Unpublished SHAPE 2006 data, Hennepin County Human Services and Public Health Department Behavioral Risk Factor Surveillance System, 2004

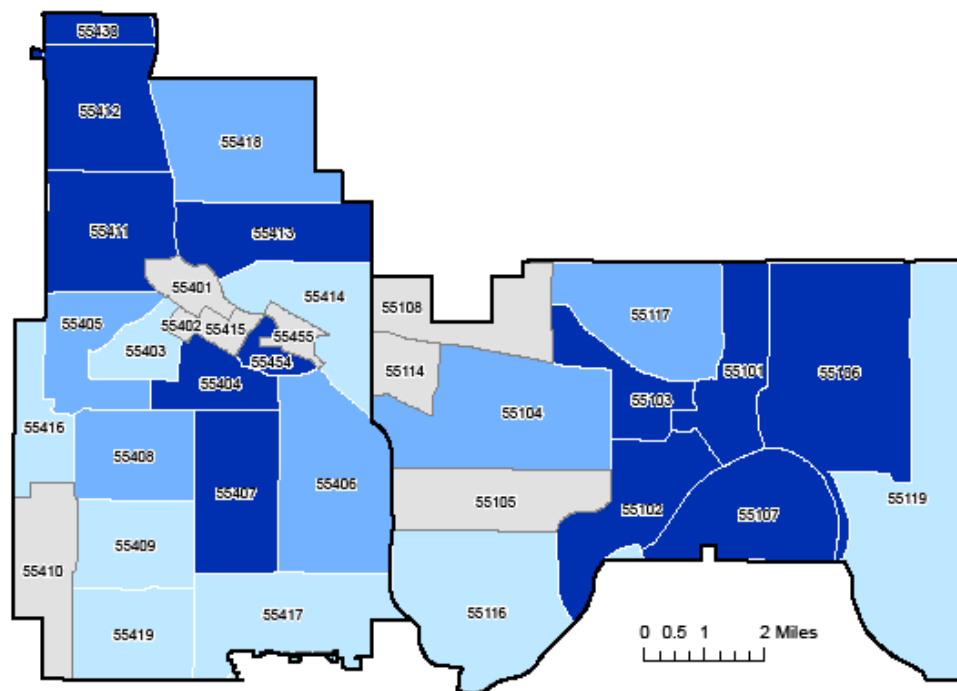
Asthma Emergency Department Visits by Zip Code, 2006

Children (0-17)	Rate per 10,000 residents	Adults (18+)	Rate per 10,000 residents
55404	301.7	55404	108.1
55407	229.5	55407	56.0
Minnesota	55.7	Minnesota	22.6

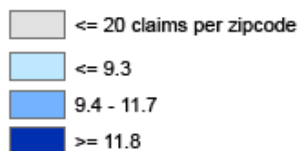
Asthma Hospitalizations by Zip Code, 2006

Children (0-17)	Rate per 10,000 residents	Adults (18+)	Rate per 10,000 residents
55404	43.4	55404	21.2
55407	33.0	55407	17.0
Minnesota	12.0	Minnesota	7.1

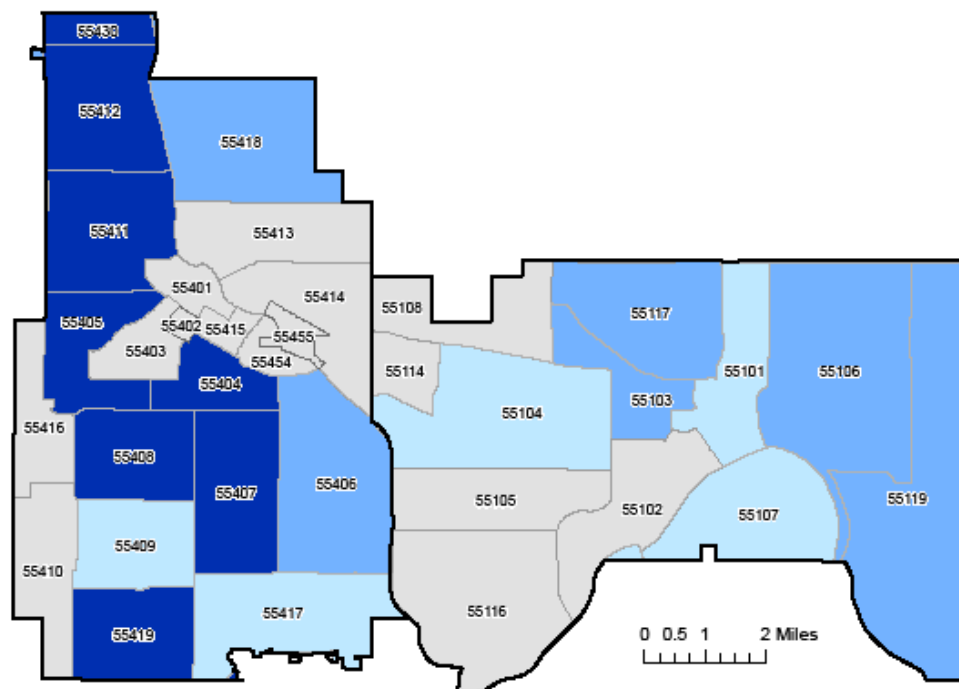
Average Annual Adult Asthma Hospitalization Rates by Zip Code Minneapolis/St. Paul, 2004-2006



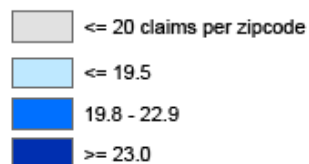
Adult Hospitalization rates per 10,000 population



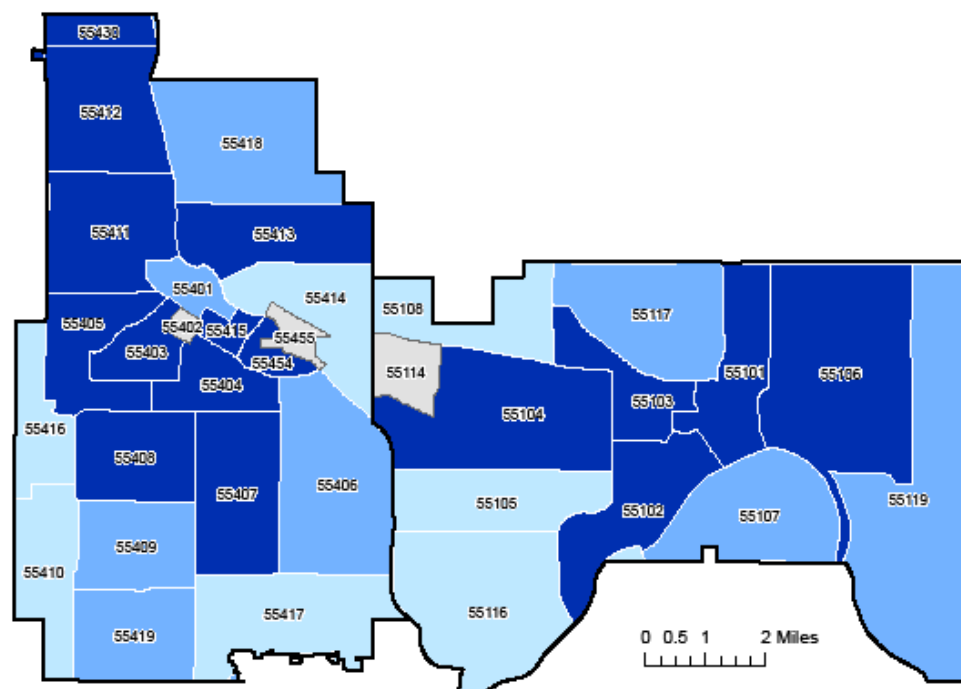
Average Annual Child Asthma Hospitalization Rates by Zip Code Minneapolis/St. Paul, 2004-2006



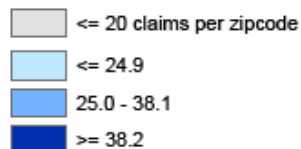
Child Hospitalization rates per 10,000 population



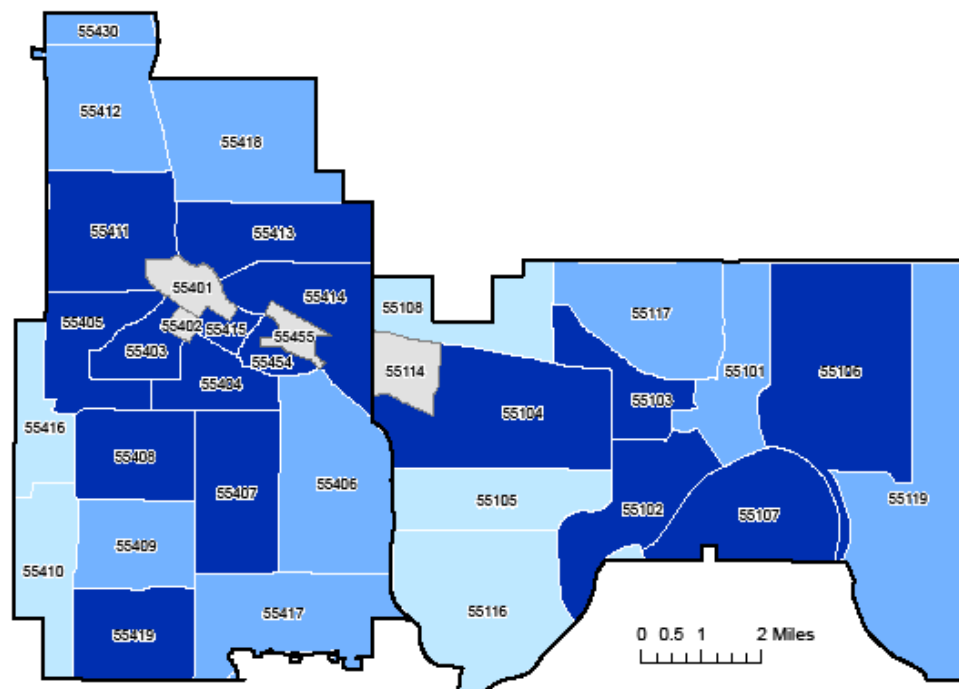
Average Annual Adult Asthma Emergency Department Visit Rates by Zip Code Minneapolis/St. Paul, 2005-2006



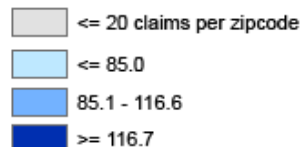
Adult ED visit rates per 10,000 population



Average Annual Child Asthma Emergency Department Visit Rates by Zip Code Minneapolis/St. Paul, 2005-2006



Child ED visit rates per 10,000 population



For more information

Wendy Brunner

wendy.brunner@state.mn.us

651.201.5895

MDH Asthma Program website:

www.health.state.mn.us/asthma/