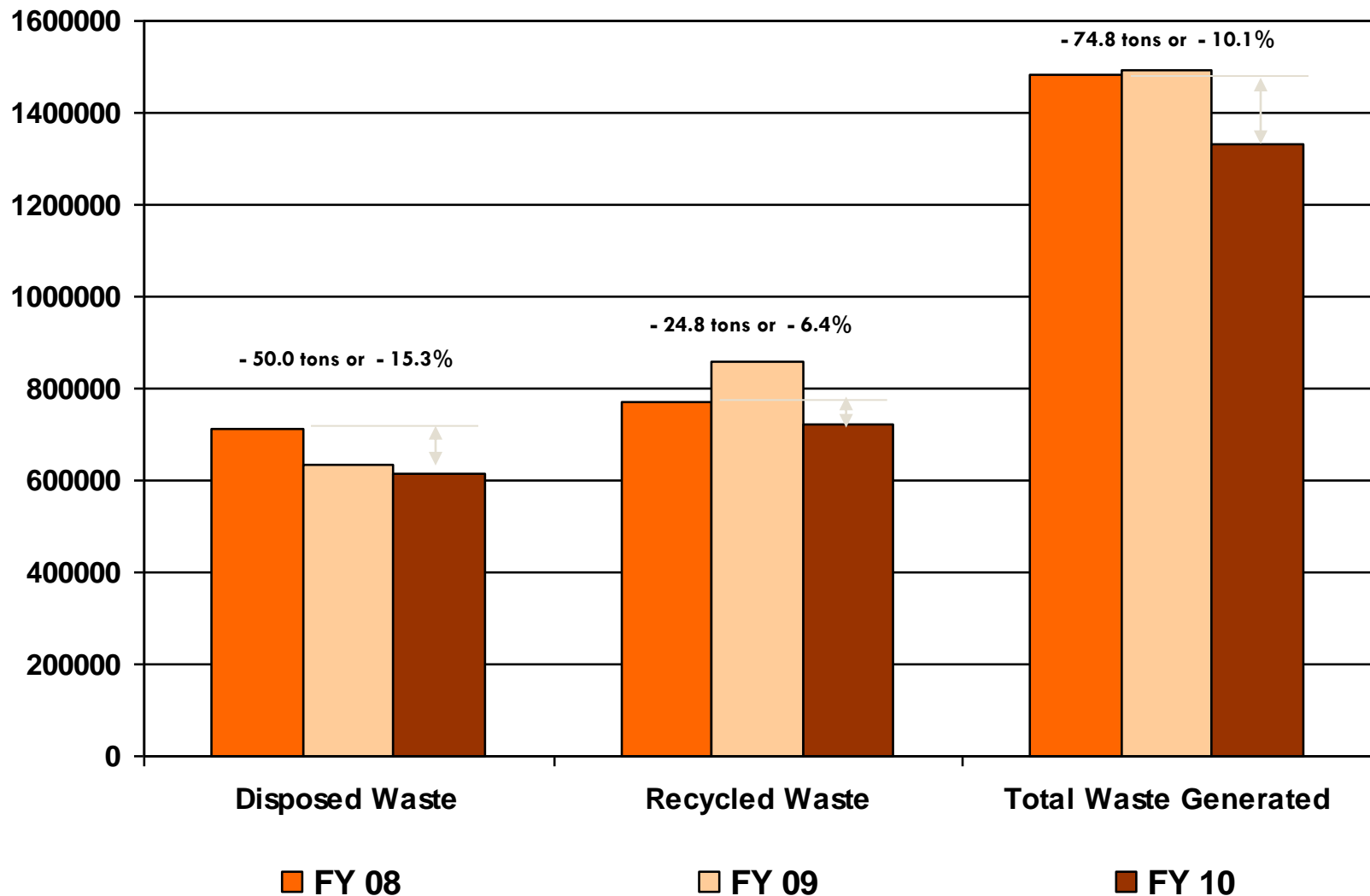


Capitol Complex Resource Recovery Center Update

March 25, 2010

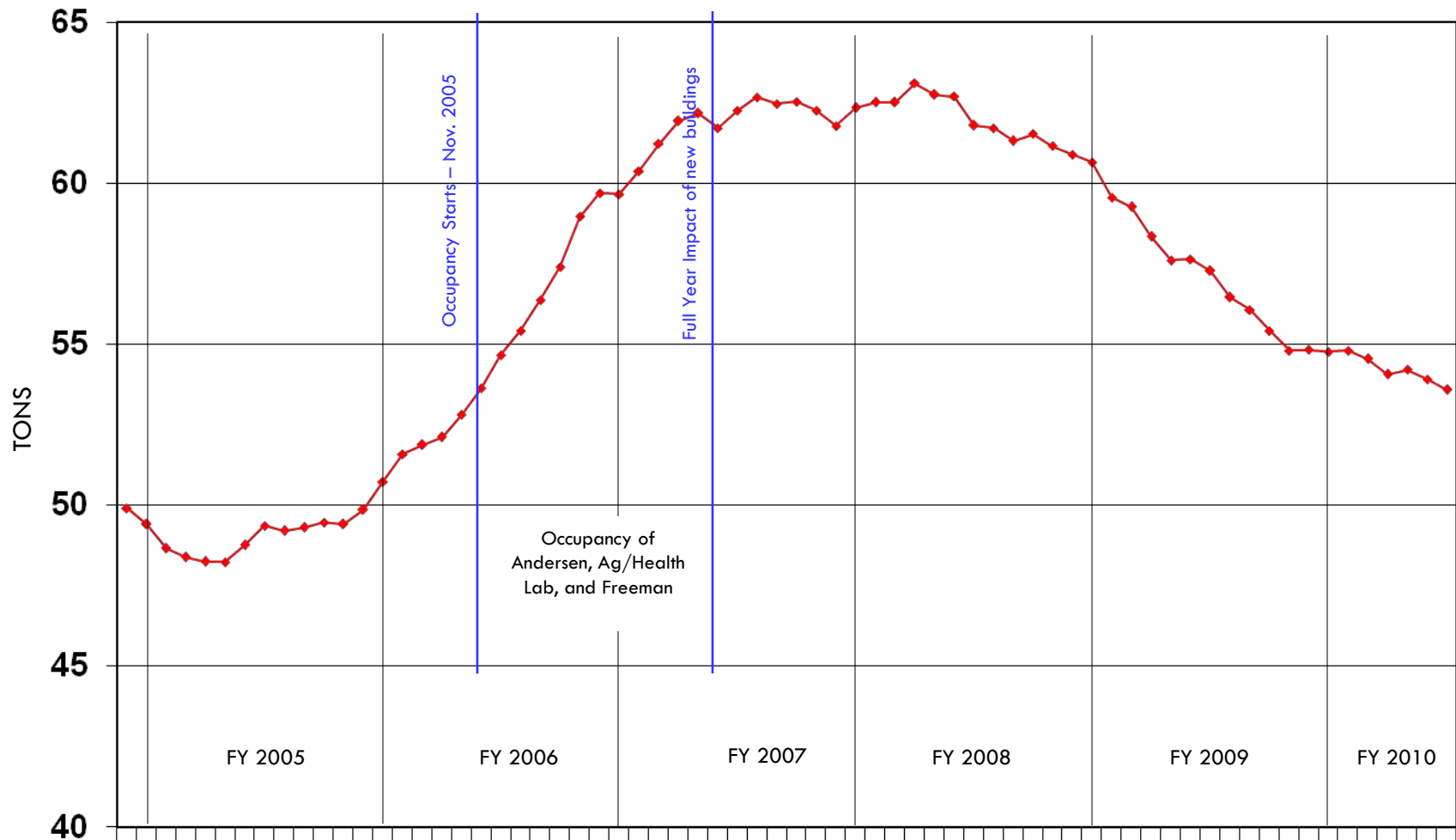
Capitol Complex

Total Waste Generated – 1st Half of FY 2008 – FY 2010



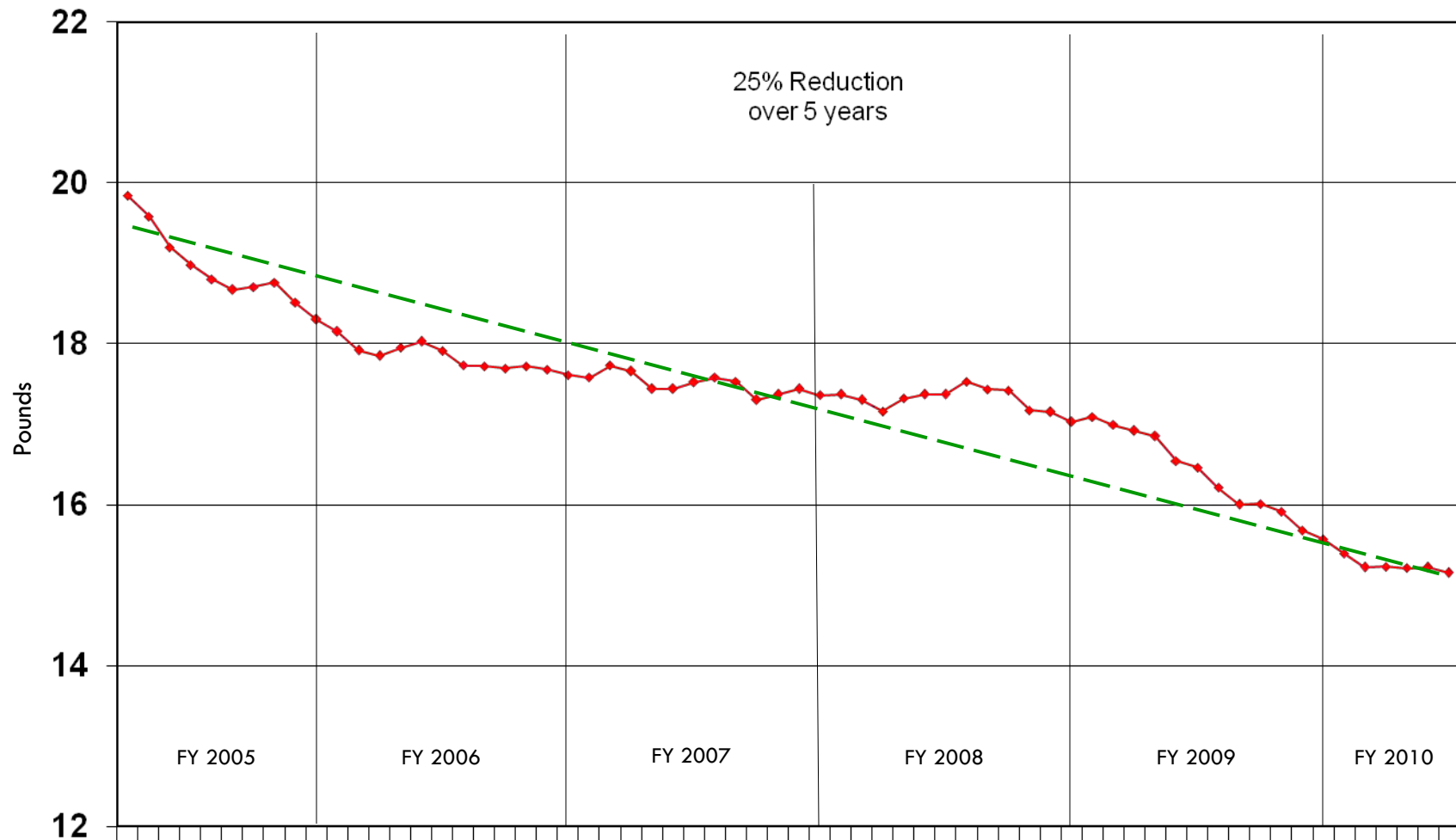
Capitol Complex

Total Waste Generated – 12 month moving average



Capitol Complex

Monthly Waste Generated per Employee – 12 month moving average



Capitol Complex Solid Waste Survey Results

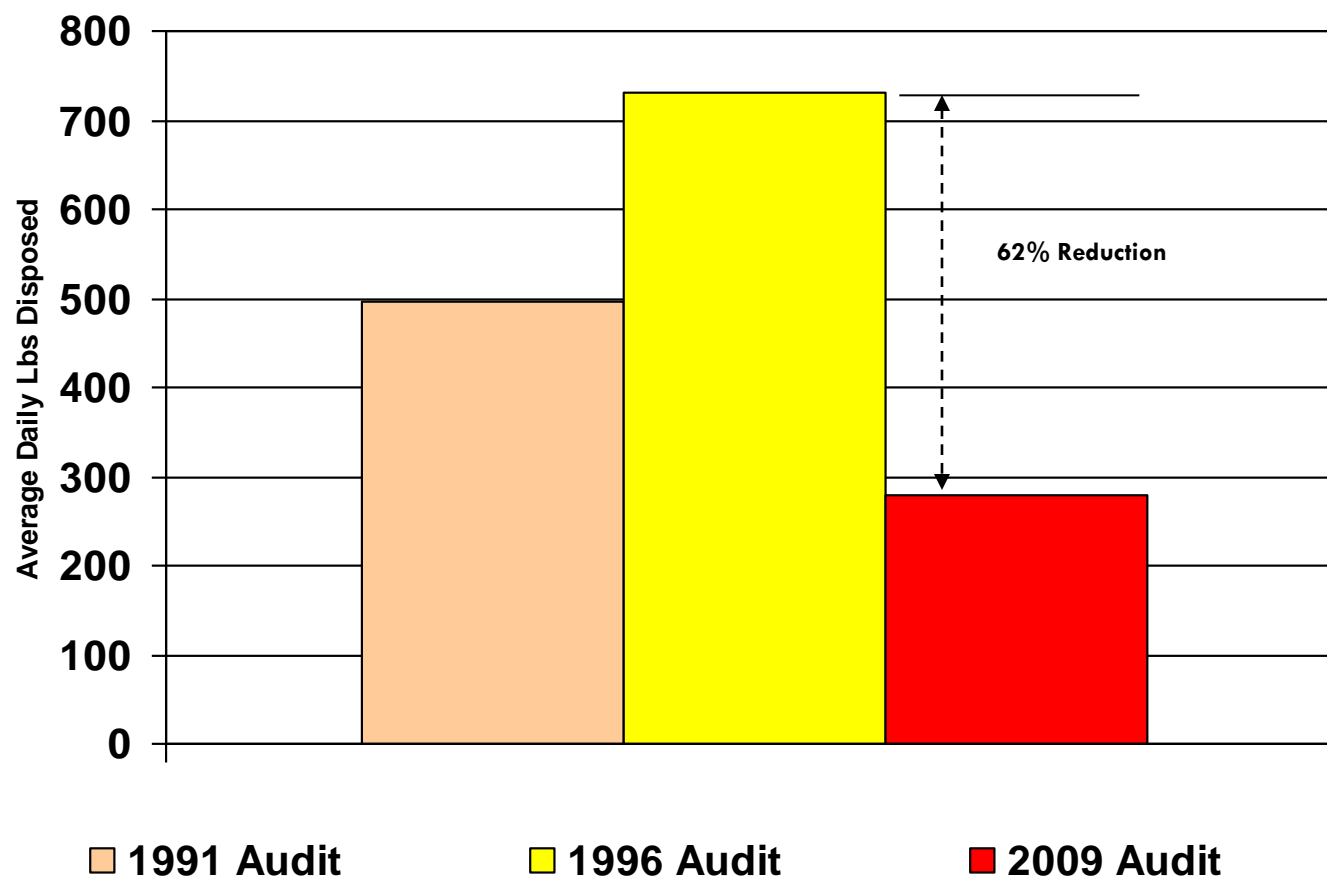
Category

All amounts are net weight and
in pounds

	total by item	Wgt/day	Lbs/1000 emp.	% of total 2009 audit	total by item	Wgt/day	Lbs/1000 emp.	% of total 1996 audit	total by item	Wgt/day	Lbs/1000 emp.	% of total 1990- 1991 audit
White & Pastel Ledger	38.5	9.6	1.34	3.5	643.0	64.3	12.69	8.8	1115.6	111.6	22.83	22.5
Newsprint	7.1	1.8	0.25	0.6	197.3	19.7	3.89	2.7	282.6	28.3	5.78	5.7
Corrugated	7.4	1.9	0.26	0.7	204.6	20.5	4.04	2.8	416.5	41.6	8.52	8.4
Mixed Paper	71.9	18.0	2.50	6.5	1008.4	100.8	19.89	13.8	1165.1	116.5	23.84	23.5
Non-Recyclable Paper	445.4	111.4	15.46	40.0	1001.1	100.1	19.75	13.7	500.8	50.1	10.25	10.1
Recyclable Plastics	19.7	4.9	0.68	1.8	577.3	57.7	11.39	7.9	168.6	16.9	3.45	3.4
Non-Recyclable Plastics	177.5	44.4	6.16	15.9	372.7	37.3	7.35	5.1	124.0	12.4	2.54	2.5
Cans	7.9	2.0	0.27	0.7	80.4	8.0	1.59	1.1	59.5	5.9	1.22	1.2
Ferrous Metal Scrap	15.4	3.9	0.53	1.4	138.8	13.9	2.74	1.9	49.6	5.0	1.01	1
Non-Ferrous Metal Scrap	1.7	0.4	0.06	0.2	29.2	2.9	0.58	0.4	5.0	0.5	0.10	0.1
Clear Glass	4.3	1.1	0.15	0.4	73.1	7.3	1.44	1	74.4	7.4	1.52	1.5
Reuseable Office Supplies	8.2	2.1	0.28	0.7	219.2	21.9	4.32	3	114.0	11.4	2.33	2.3
Food Waste	219.7	54.9	7.63	19.7	920.7	92.1	18.16	12.6	297.5	29.7	6.09	6
Yard Waste	2.1	0.5	0.07	0.2	73.1	7.3	1.44	1	9.9	1.0	0.20	0.2
Wood Waste	2.2	0.6	0.08	0.2	935.3	93.5	18.45	12.8	138.8	13.9	2.84	2.8
Disposable Diapers	6.7	1.7	0.23	0.6	36.5	3.7	0.72	0.5	44.6	4.5	0.91	0.9
Other Organics	31.7	7.9	1.10	2.8	138.8	13.9	2.74	1.9	49.6	5.0	1.01	1
Small Electric Appliances	8.8	2.2	0.31	0.8	29.2	2.9	0.58	0.4	34.7	3.5	0.71	0.7
Other Inorganics	10.1	2.5	0.35	0.9	285.0	28.5	5.62	3.9	198.3	19.8	4.06	4
Demo/Construction Debris	0	0.0	0.00	0.0	241.1	24.1	4.76	3.3	49.6	5.0	1.01	1
Household Hazardous Waste	0.7	0.2	0.02	0.06	21.9	2.2	0.43	0.3	14.9	1.5	0.30	0.3
Empty House. Haz. Cont.	1.3	0.3	0.05	0.1	14.6	1.5	0.29	0.2	0.0	0.0	0.00	0
Batteries	3.4	0.9	0.12	0.3	7.3	0.7	0.14	0.1	0.0	0.0	0.00	0
Textiles	21.2	5.3	0.74	1.9	58.5	5.8	1.15	0.8	44.6	4.5	0.91	0.9
Total Disposed Waste Wgt (Lbs)	1113	278.2	38.64		7307	730.7	144.15	100	4958	495.8	101.45	
Length of Audit	4 days				10 days				10 days			
Number of Capitol Campus Employees	7201				5069				4887			

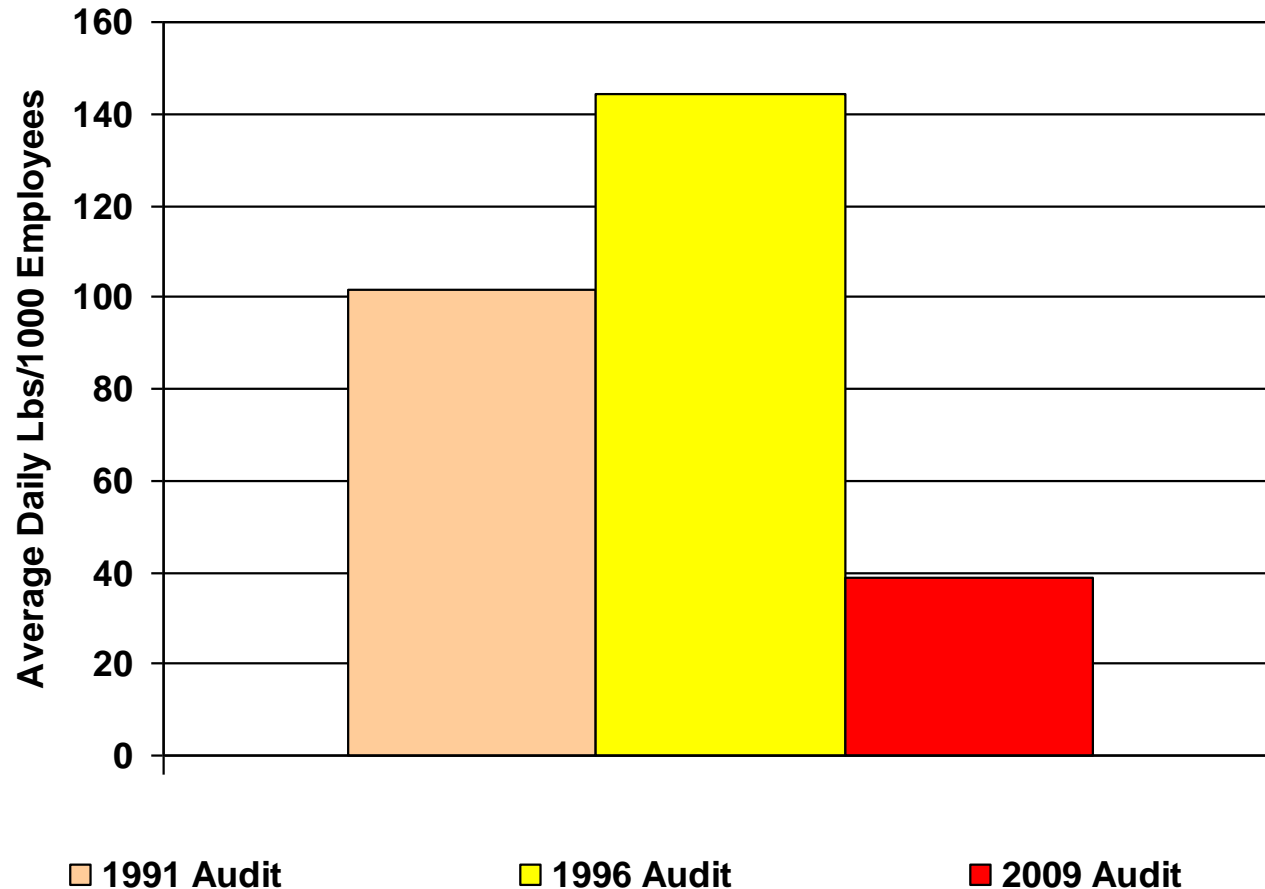
Capitol Complex Waste Audit Results

Average Daily Pounds of Waste Disposed



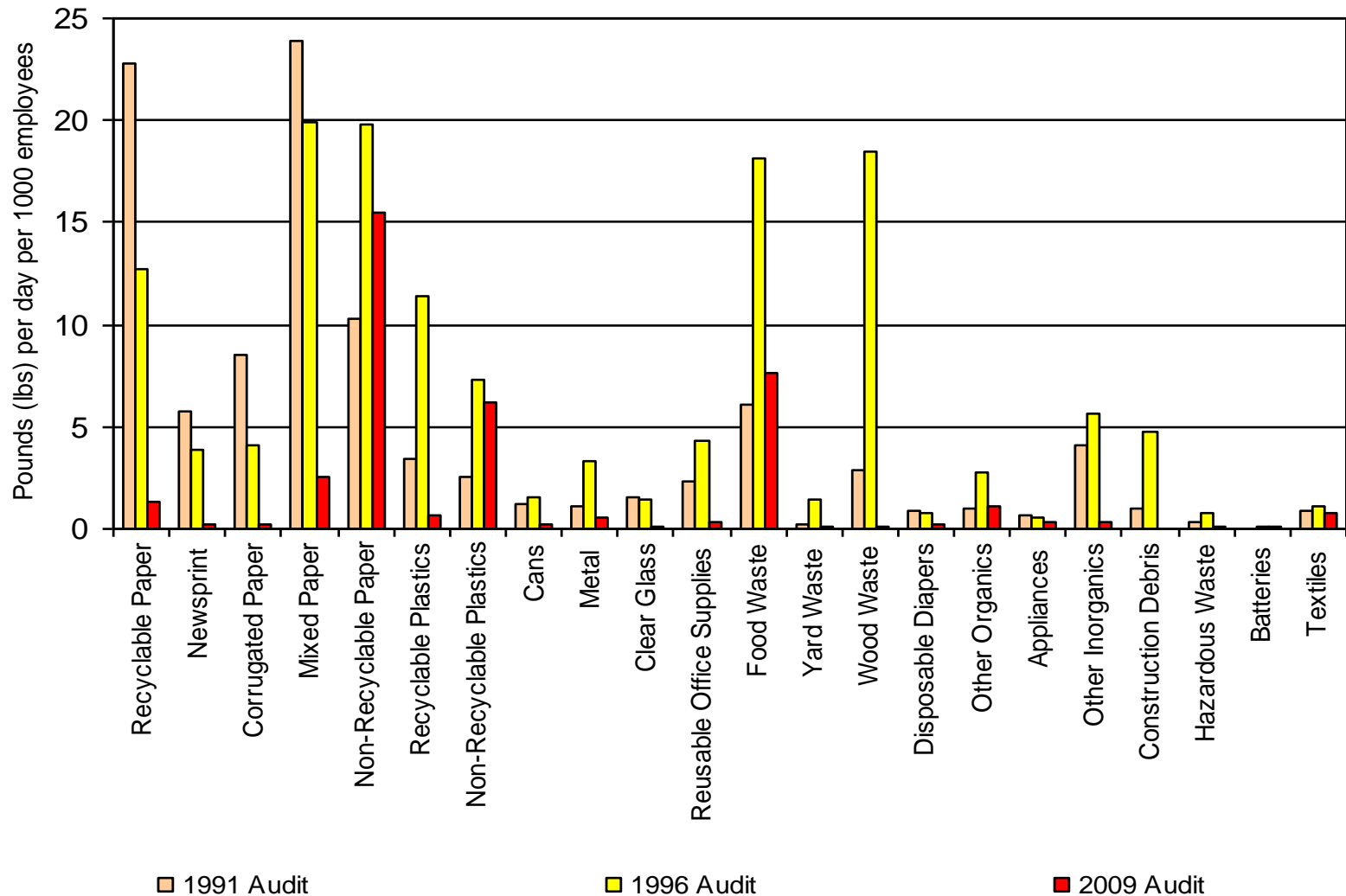
Capitol Complex Waste Audit Results

Average Daily Pounds of Waste Disposed per 1000 employees



Capitol Complex Waste Audit Results

Average Daily Pounds per 1000 employees by type



Capitol Complex

Recycled Paper Revenue Rates per Ton by Type

