

# Report on 2008 SCORE Programs

A summary of recycling and waste management in Minnesota

December 2009



**Minnesota Pollution Control Agency**

Employees at Rock Tenn in St. Paul cut open bales of corrugated cardboard in preparation for recycling.

Minnesota Pollution Control Agency  
520 Lafayette Road North  
Saint Paul, MN 55155-4194  
<http://www.pca.state.mn.us>  
651-296-6300 or 800-657-3864 toll free  
TTY 651-282-5332 or 800-657-3864 toll free  
Available in alternative formats

## Author

Principal Author/Data Analysis: Arlene Vee

## Contributors

Wayne Gjerde  
Mary Baker  
Don Kyser  
Tina Patton

## Editing and Graphics

Paul Andre  
Theresa Gaffey  
Glenn Krocheski-Meyer  
Beth Tegdesch

lrp-p2s-3sy09

*The total cost of preparing the Report on 2008 SCORE Programs was \$11,125  
including staff time, writing, editing, and printing.*

*The MPCA is reducing printing and mailing costs by using the Internet to distribute reports  
and information to a wider audience. For additional information on recycling, waste prevention,  
and waste management, check out the SCORE Web site: <http://www.pca.state.mn.us/score>*

*This report was printed on recycled paper manufactured without the use of elemental chlorine  
(cover: 30% post-consumer; body: 100% post-consumer).*

# Table of Contents

<b>Summary</b> .....	1
<b>Introduction and Purpose</b> .....	2
<b>MSW Generation in Minnesota</b> .....	2
Totals and trends .....	3
On-site disposal and problem materials not recycled .....	4
Per capita MSW generation .....	4
<b>Recycling and Benefits</b> .....	4
Economic and environmental benefits of recycling .....	7
<b>MSW Processing and Disposal</b> .....	9
Trends in waste disposal .....	9
<b>Funding of SCORE Programs</b> .....	11
State funding: SCORE block grants .....	11
County funding .....	12
<b>Appendices</b> .....	13
<b>Figures</b>	
Figure 1: 2008 Total MSW managed .....	1
Figure 2: Minnesota MSW generation .....	3
Figure 3: Minnesota’s recycling progress .....	5
Figure 4: MSW processing and disposal .....	9
Figure 5: Trends in Minnesota waste management .....	10
Figure 6: SCORE expenditures .....	12



# Summary

This *Report on 2008 SCORE Programs* summarizes information submitted by all 87 counties and the Western Lake Superior Sanitary District (WLSSD) on waste management efforts, including waste reduction activities, recycling, household hazardous waste programs, yard waste, and problem materials collection.

In 2008, less MSW was generated and more was recycled.

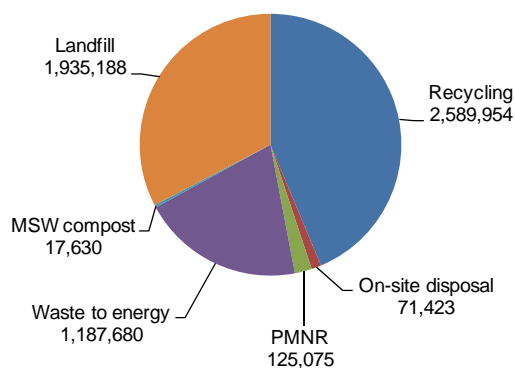
## MSW generation

In 2008, while population increased, total waste generation dropped by 3.5 percent.

Minnesota's municipal solid waste (MSW) generation totaled 5,926,951 tons in 2008; this represents a total of on-site disposal, problem materials not recycled (PMNR), recyclables, MSW disposal and processing (landfilled, resource recovery facilities, and MSW composting).

In 2008, an average Minnesotan created 2,242 pounds of MSW per year or 1.12 tons. Minnesota's population increased to 5,287,976 or 0.5 percent.

**Figure 1: 2008 Total MSW managed**  
(Figures in tons)



## Recycling

In 2008, 2,589,954 tons were recycled, an increase of 0.2 percent. The base recycling rate, a more accurate measure of progress, for 2008 is 43.7 percent of the total MSW generated. With credits for yard waste recycling and waste reduction efforts, Minnesota's recycling rate for 2008 is 51.1 percent. The base recycling rate is the actual percentage of materials recycled; it does not include the additional source reduction and yard waste credits. The steady recycling growth reflects the significant state, local, and industry investment in our recycling system.

## MSW processing and disposal

In Minnesota, waste is managed through four main disposal and processing methods: landfills, resource recovery, MSW composting, and on-site disposal. In 2008:

- 1,935,188 tons were landfilled
- 1,187,680 tons were processed through resource recovery
- 17,630 tons were composted
- 71,423 tons were disposed of on-site

The amount of waste leaving Minnesota continues to decrease. In 2008, 604,287 tons left Minnesota to the states of Iowa, Wisconsin, North Dakota, and South Dakota.

## Funding

In 2008, Minnesota counties spent over \$57.8 million for SCORE-related programs — \$13.8 million (24 percent) was funded by the state, and \$44 million (76 percent) was funded by counties. Due to the 2007

Legislature and Governor's actions, to restore SCORE funds to the levels of 2002, \$13.8 was disbursed in calendar year 2008.

## Recycling markets

In 2008, global economic recession caused the price of virgin materials to drop significantly. Minnesota recycling markets experienced a drop similar to that which was seen in 1997. Many outside factors affected the price of the recycled materials, the two biggest were the economic recession and China pulling out of the market for a short while. Local recyclers also relied on selling to China's markets which in turn caused the local end users to find material elsewhere and sign long-term contracts. When the Chinese market dropped out, local recyclers were left with little opportunity to sell their material to local markets.

The local market has indicated interest to engage local recyclers if they are willing to sign long term supply contracts. Local market concerns are of losing raw material to China from local suppliers once the market recovers.

## Introduction and Purpose

---

In 1989, the Legislature adopted comprehensive legislation based on recommendations of the Governor's Select Committee on Recycling and the Environment (SCORE). This set of laws, Minn. Stat. § 115A.551-115A.558, commonly referred to as SCORE, initiated a stable source of state funding for recycling programs, as well as waste reduction and the improved management of household hazardous wastes, yard waste, and problem materials. SCORE legislation provides grant dollars, along with funding to counties and local government for long-term flexible programs.

This *Report on 2008 SCORE Programs* (Report) summarizes information submitted by all 87 counties and the WLSSD on waste management efforts, including waste reduction activities, recycling, household hazardous waste programs, and problem materials collection.

The Minnesota Pollution Control Agency (MPCA) uses this information to calculate the state's recycling rates and the cost of managing waste and recycling, and to detail trends in waste generation and disposal. While data collection began in 1989, in 1991, counties began collecting data on a calendar year basis, instead of a fiscal year basis. By 1991, data collection and format had greatly improved, making the quality of the data that much better.

This report and information on the SCORE program are available on the MPCA's Web site at <http://www.pca.state.mn.us/score>. The MPCA continues to review and use the submitted survey data after publication of the final report each year. As a result, tonnages published in this report for previous years may not match the tonnages originally reported for those years. Occasionally, counties find errors, and it is necessary to adjust reported data after the final report is published.

Every other year, the MPCA expands on the annual report on SCORE programs and makes solid waste policy recommendations to the Legislature in the Solid Waste Policy Report. Work on the *2009 Solid Waste Policy Report* has begun. See <http://www.pca.state.mn.us/oea/policy/policyreport.cfm> for more details.

## MSW Generation in Minnesota

---

Since 1999, Minnesota's MSW generation has slowed. Beginning in 2006, MSW generation growth slowed to an all-time low—increasing by only 0.3 percent in 2006, in 2007 by 0.07; however, in 2008, to a record low of -3.5 percent. This is the first time in the history of SCORE reporting that we have seen a decrease in MSW generation. In 2008, per capita generation of MSW dropped to 1.12 tons, down from 1.16 tons per capita over the past six years (2002-2007).

Mixed MSW is defined by statute as “garbage, refuse, and other solid waste from residential, commercial, industrial, and community activities that the generator of the waste aggregates for collection.” It includes common materials found in household and commercial garbage, such as packaging materials, containers, food discards and other compostable materials, plastic, paper, etc. MSW does *not* include auto hulks, street



sweepings, ash, construction debris, mining waste, sludge, tree and agricultural wastes, tires, lead acid batteries, motor and vehicle fluids and filters, and other materials collected, processed, and disposed of as separate waste streams (Minn. Stat. § 115A.03, subd. 20). Total MSW generation *does* include wastes discarded (tons sent to disposal and resource recovery facilities), recycled, disposed of on-site (burn barrels or farm dumps), and PMNR.

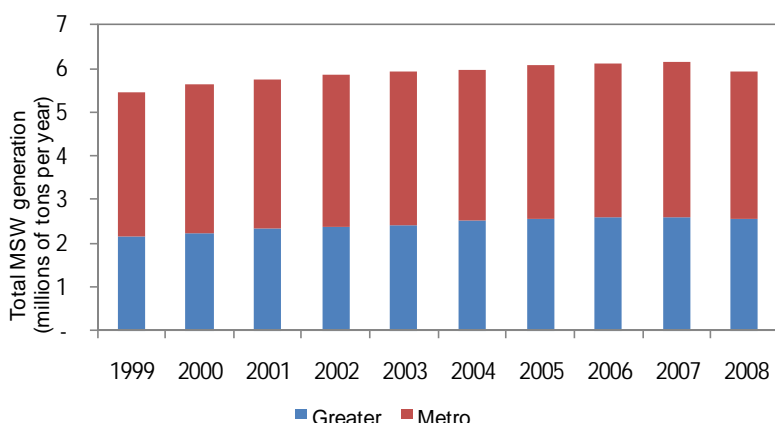
## Totals and trends

Minnesota's MSW generation totaled 5,926,951 tons in 2008, a decrease from 6,140,012, in 2007. Statewide, this represents a decrease of 3.5 percent from the previous year. Greater Minnesota accounted for 43 percent of the state's MSW generation, and the seven-county Metropolitan Area accounted for 57 percent in 2008.

The four centroid areas — Duluth, St. Cloud, Rochester, and the Twin Cities — consisting of 17 counties, generate 70 percent of the waste in Minnesota, or 4,353,320 tons in 2008. This is a decrease of approximately 153,773 tons from 2007. Sixty-nine percent of Minnesota's population lives in these 17 counties, or 3,637,577 residents.

Since 1999, MSW generation dropped on average by 1 percent (1999-2008) and 0.07 percent over each of the past five years (2004-2008). Counties attribute the 2008 decrease to less tourism, and less consumer spending as seen by businesses closing or cutting inventory. While improvement in waste reduction efforts may account for some decline, waste generation generally decreases during times of economic recession and increases during an economic expansion.

**Figure 2: Minnesota MSW generation**



Total 2008 generation:  
5,926,951 tons

For 2007–2008, the  
amount of MSW  
generated in Minnesota  
decreased by 3.5% while  
population increased by 0.5%.

MSW Generation	1999	2000	2001	2002	2003	2004	2005	2006	2007	2008	Change 2007-08
Greater Minnesota	2.14	2.20	2.32	2.37	2.41	2.53	2.56	2.58	2.60	2.57	(1.2%)
Metropolitan Area	3.30	3.43	3.42	3.49	3.51	3.45	3.52	3.52	3.54	3.36	(5.2%)
Statewide	5.44	5.63	5.74	5.86	5.92	5.98	6.08	6.10	6.14	5.93	(3.5%)

*Figures in millions of tons*

## On-site disposal and problem materials not recycled

On-site disposal of MSW, either burning or burying, has been used for generations and still is being used. Although it is against the law for most people, some farmers are allowed to burn or bury their household garbage under existing Minn. Stat. §§ 88.171 and 17.135.

In the 2008 SCORE survey, counties estimate that 1.2 percent of the total waste generated is disposed of on-site, — an increase of 394 tons (0.6 percent) from 2007 (71,029 tons up to 71,423 tons).

Problem materials not recycled (PMNR) make up 2 percent of the total MSW generation for 2008. PMNR includes five materials that have been banned from disposal in Minnesota (vehicle batteries, tires, major appliances, motor oil, and oil filters). The PMNR number is that portion of the materials that is not recycled, but is assumed to be disposed of somewhere, legally or not, as they are banned from MSW disposal facilities. It is assumed that they are not being counted in landfill or incinerator tonnages.

## Per capita MSW generation

The MPCA calculates the amount of waste that the average Minnesotan creates each year in an attempt to understand if waste growth is coming primarily from an increase in population or increases in consumption.

In 2008, the Minnesota per capita rate decreased (-3.91 percent from 2007) to 1.12 tons per person (2,242 pounds/person/year). This is consistent with the decreases seen in MSW generation (-3.5 percent) and with Minnesota's economy. In looking at Greater Minnesota versus the Metropolitan Area per capita rate, we find that the Greater Minnesota per capita rate is 1.06 tons (2,125 pounds/person/year), a decrease of approximately 1.31 percent from 2007. In comparison, the Metropolitan Area per capita rate is 1.170 tons (2,340 pounds/person/year), a decrease of 5.85 percent from 2007.

Minnesota's population continues to grow. In 2008, Minnesota's population increased 0.5 percent to 5,287,976 from 2007 population of 5,263,610—Greater Minnesota by 0.1 percent and the Metropolitan Area by 0.7 percent. In the last five years, Minnesota's population increased approximately 28,574 per year; however in 2008, the population increased by only 24,366. From 1991 to 2008, Minnesota's population grew 19.7 percent—Greater Minnesota increased 15.3 percent and the Metropolitan Area increased by 23.8 percent.

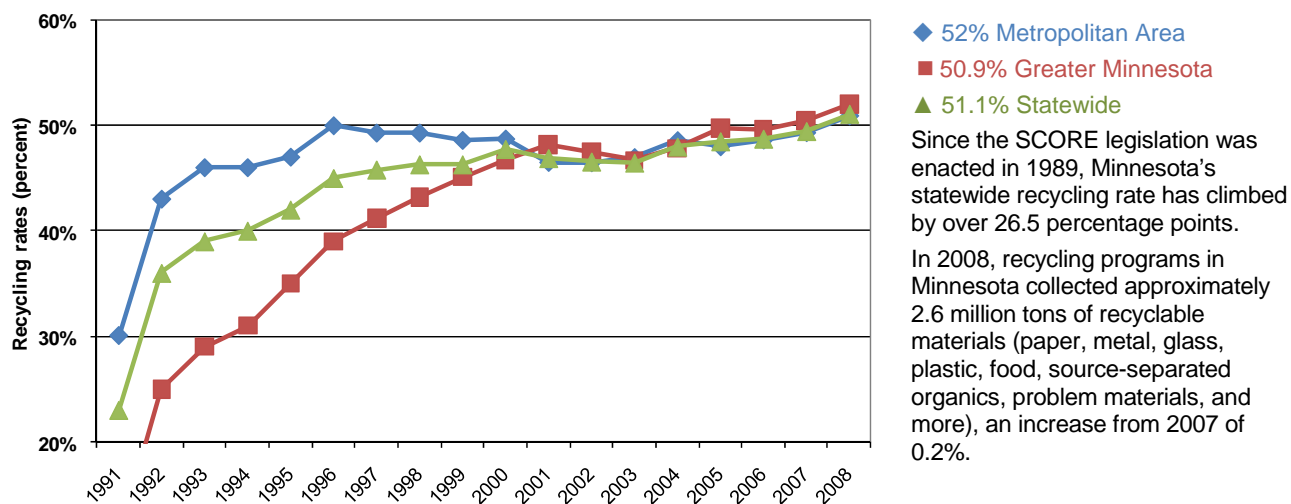
## Recycling and Benefits

Minnesota's recycling programs are among the nation's most successful. In 2008, 2,589,954 tons were recycled; Minnesota's recycling rate (including credits for yard waste recycling and waste reduction efforts) increased by 1.6 percentage points to 51.1 percent. The state's base recycling rate is approximately 43.7 percent, an increase of 1.59 percentage points. The base recycling rate is a more accurate measure of progress as it is the actual percentage of materials recycled; it does not include the additional source reduction and yard waste credits. While this growth reflects the significant state, local, and industry investment in our recycling system, as well as strong material markets, evidence suggests much more could be done to recover the millions of tons of discarded recyclable and organic materials still disposed of each year.

In 2008, 27 percent of the materials collected for recycling in Minnesota came from residential sources; this is up slightly from 25 percent over the last 10 years. Commercial, industrial, and institutional recycling, both documented and undocumented industrial sectors, accounts for another 71 percent, and mechanical/hand separated recycling accounts for the remaining 2 percent.



**Figure 3: Minnesota's recycling progress**



Recycling Rates	2001	2002	2003	2004	2005	2006	2007	2008
Metropolitan Area	48.2	47.4	46.7	47.8	49.7	49.7	50.5	52.0
Greater Minnesota	46.5	46.5	47.0	48.6	48.0	48.6	49.3	50.9
Statewide	46.9	46.6	46.5	48.0	48.5	48.7	49.5	51.1

The total reported recycling tonnages are from documented and estimated sources. Documented tonnages account for 66 percent of the total recycling tonnages. Counties ask for, and the majority of them are able to receive, documented tonnages from their haulers, recyclers, and businesses. This is a difficult task for all counties, especially those in the Metropolitan Area due to the large population and businesses, the number of haulers, along with municipalities that contract for recycling. The amount of staff and time placed into the collection of tonnages, enables the county to better identify and receive documented tonnages which increases the degree of accuracy in annual reporting.

Counties have available to them tools that they can implement to assist them to obtain necessary and accurate data, along with assisting in their solid waste management programs. The Solid Waste Ordinance is one such tool, along with licensing of solid waste and recycling haulers.

It may help to look at the submitted 2008 SCORE survey to better understand and identify how many counties implement these tools and how it may relate to the counties' recycling rates. Below are break outs from the general survey questions to recycling:

- **Curbside collection** – Counties reported in the 2008 SCORE survey that there are 799 cities or townships that offer curbside collection at least once a month, serving over 4 million people or over 76 percent of Minnesota residents. There are 24 counties in Minnesota that have less than a 35 percent recycling rate with credits. The population of these counties ranges from 3,724 to 105,000. In these 24 counties, it is estimated the percentage of the population receiving curbside collection ranges from 0 percent all the way to 99.49 percent.
- **Commercial/industrial recycling promotion** – The survey asks if the county has specific programs promoting commercial/industrial recycling: 65 counties said yes, 22 counties said no. Of the counties with less than a 35 percent recycling rate; 9 of the 24 counties have no program for commercial/industrial recycling.

- **Availability to recycling centers, stations, or MRFs** – All 87 counties have at least one recycling center, station, or MRF available to their residents for recycling. Some counties have a combination of centers, stations, or MRFs available for their residents. Minn. Stat. § 115A.552, Opportunity to Recycle, describes county requirements, opportunities, education, and promotion of their recycling programs.
- **Banned recyclable materials from landfills or disposal** – Only 18 counties of the 87 have banned recyclable materials from disposal. The 24 counties with less than a 35 percent recycling rate indicate that only 2 of them have banned recycling from disposal.
- **Enacted solid waste ordinances requiring residents to recycle, businesses to recycle, and haulers to provide recycling collection services** – Only 21 counties have enacted an ordinance requiring residents to recycle, and 20 of those counties require businesses to recycle. Only 30 of the 87 counties require haulers to provide recycling collection services. If counties have not enacted an ordinance, the 2008 SCORE survey shows that 114 cities have enacted an ordinance requiring residents to recycle. Only 53 cities have enacted an ordinance requiring businesses to recycle and 155 cities require haulers to provide recycling collection services. Looking closer at the 24 counties with less than a 35 percent recycling rate, 3 of them have an ordinance requiring residents and businesses to recycle. Four of the 24 counties require haulers to provide recycling collection services. Two of the 24 counties that have not enacted an ordinance, reported that there are 5 cities that require residents to recycle; 3 cities require businesses to recycle, and 22 cities require haulers to provide recycling collection services.
- **Licensed recycling collectors** – Just over half of the counties in Minnesota license their haulers, 50 counties report that they license recycling collectors. However, 66 counties report that they require recyclers to submit tonnage reports. Eleven of the 24 counties, with less than a 35 percent recycling rate, indicate that they license recycling collectors and 16 require recyclers to submit tonnage reports.

Below is a summary of the 2008 SCORE general survey questions in regard to solid waste. [The survey questions are: do counties license solid waste haulers, and if not, do the cities; and are the solid waste haulers required to have variable-rate pricing structure.]

- **County solid waste licensing** – Out of the 87 counties, 79 license solid waste haulers and 67 of those report that they do not know or is not applicable that their cities license solid waste haulers. Looking at the 24 counties with less than a 35 percent recycling rate, 21 counties state that they license their solid waste haulers. There are only 3 counties that do not license; however, 1 of those counties report that its cities license solid waste haulers.
- **Variable-rate pricing** – In the 2008 SCORE survey, 76 counties reported that they require variable-rate pricing of their solid waste haulers. Fifteen of the 24 counties that have less than a 35 percent recycling rate state that they do require solid waste haulers to have variable-rate pricing structures in place.

In Minnesota, an estimated 4,057,345 people, or 76 percent of the population is served by curbside recycling programs for 2008. In 2007, the population served by curbside collection was 3,593,483.

In 2008, Minnesota county recycling programs collected approximately 2.6 million tons of recyclable materials (paper, metals, glass, plastic, food, problem materials, etc.) — an increase of over 4,544 tons, or 0.2 percent from the previous year. Since the SCORE legislation was enacted in 1989, the tons of materials collected for recycling in Minnesota have more than tripled, and the statewide recycling rate has increased by more than 28 percentage points, moving from 23 percent to 51.1 percent.

In order to understand the increase in recycling in contrast to the market drop and economic recession, the table depicts the recycling tonnages by category, from 2007 and 2008 and also the change seen. In 2008, due to high markets for metal earlier in the year, the majority of the increase seen in recycling was in metals. The majority of the tonnages lost, in 2008, were from organic and paper recycled tonnages. This is the second year organics reported tonnages have decreased from the high in 2006 of 179,000 tons. Organic recycling consists of food to livestock, food to people, and source separated composting.

The 17 counties in the four centroid areas, the geographical urban area of Minnesota recycled a total of 1,839,382 tons or 71 percent of the total amount recycled in Minnesota in 2008. This is an increase of 13,286 tons or a 0.73 percent increase from 2007. This does not follow the Minnesota trend, statewide we saw a small increase of 0.2 percent from 2007.

Category	2007 Tonnage	2008 Tonnage	Change from 2007
Banned	121,395	126,807	5,412
Glass	126,496	126,391	(105)
Metal	491,715	517,441	25,725
Organics	177,227	153,481	(23,746)
Other	670,009	695,522	25,513
Paper	932,223	901,879	(30,343)
Plastic	49,419	52,197	2,778
Textiles	16,926	16,236	(690)
<b>Total</b>	<b>2,585,410</b>	<b>2,589,954</b>	<b>4,544</b>

## Economic and environmental benefits of recycling

Recycling is important in Minnesota—both economically and environmentally. Minnesota’s recycling manufacturers continues to contribute an estimated \$3 billion to the state’s economy; and over 9,000 manufacturing jobs are tied to companies using recycled material in their manufacturing processes. Over \$760 million in wages is related to recycling activities. In addition to the contributions of these value-added manufacturers, there is economic value related to collecting, processing, and marketing recyclables in Minnesota (which is supported by SCORE dollars).

## Recycling markets

### Outside economic indicators affecting market

Many outside factors affected the price of the recycled material market in 2008. The two biggest markets were the 2008 global economic recession which caused the price of virgin materials to drop, and China exiting the markets for a period of time. The price of recycled material closely tracks the virgin material markets. There was a similar drop for recycled material in Minnesota in 1997. Since 1997, Minnesota has added additional capacity in paper and plastic which helps cushion the drop in markets.

### Local markets

A strong local recycling infrastructure promotes local job development and capital investment, two essential needs during these difficult economic times.

The largest segment of the value-added recycling industry is made up of manufacturers who use recycled paper, post-consumer paper, old corrugated cardboard, and newspaper as raw materials. Major companies around Minnesota include Rock-Tenn (St. Paul), Liberty Paper (Becker), New Page (Duluth), Pactiv (Moorehead), and Insolution (Lorreto). These companies use 820,000 tons of cardboard, office paper, and newspaper annually, much of their raw material is collected from Minnesota curbside and business recycling programs.

Minnesota has one of the largest concentrations of plastic lumber/sheet manufacturers in the country: Master Mark Plastic (Albany), Bedford Technology (Worthington), and Recycled Plastic Inc. (Garfield). A phone survey to the local paper, plastic, and glass markets still indicated demand for these materials.

## Over reliance on China by some local recyclers

Some recyclers put a great deal of reliance on the China market due to increased upward pricing opportunities. This caused the local end users to bring in raw material from other sources because they were unable to source enough material locally. The evaporation of the China market for the recyclers has left them with little to no opportunity with the local market due to the long term supply contracts. The local end users have indicated they would engage local recyclers if recyclers were willing to sign long-term supply contracts. The local market is concerned that it would lose raw material to China from local suppliers once the market recovered.

In response to and in order to open this dialogue with local recyclers, the Minnesota Pollution Control Agency in partnership with Recycling Association of Minnesota, Southeast Minnesota Recycler's Exchange (SEMREX), and the Solid Waste Management Coordinating Board (SWMCB) held three market workshops around the state, late 2008 and early 2009.

Discussion included markets for materials, such as plastic, paper, glass, and other region-specific materials, as well as potential partnerships, resort and event recycling, and transportation logistics. The workshops also offered attendees the chance to:

- see a snapshot of recycling tonnages and markets in your region
- hear about local, national, and international market conditions
- discover opportunities for improving your recycling program's efficiency and cost-effectiveness
- learn about local success stories
- hear from recycling markets in your region and other parts of the state and have an opportunity to talk with them one-on-one

## Environmental benefits

One measure of Minnesota recycling environmental benefits is the reduction of green house gas emissions compared to other waste management practices. The U.S. Environmental Protection Agency created a tool to measure and track these benefits: the Waste Reduction Model (WARM). Calculations using Minnesota recycling of 2.6 million tons of material in 2008 show that: According to WARM, by recycling 2.6 million tons of materials in 2008, Minnesota:

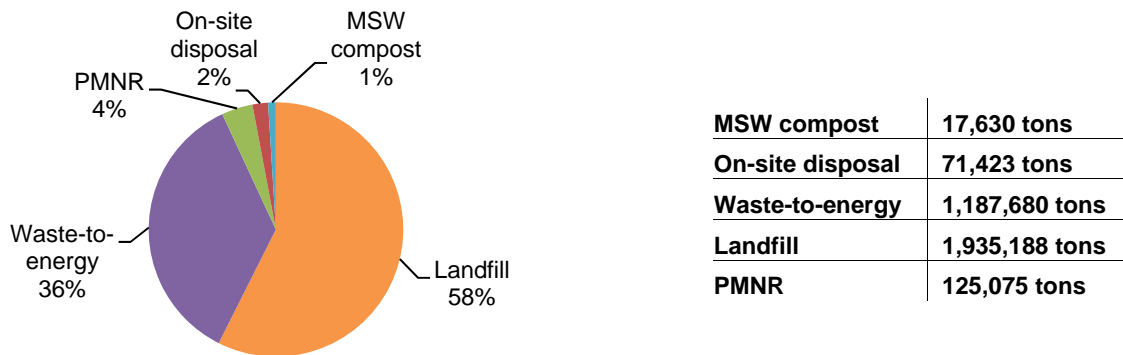
- reduced 7.9 million metric tons of carbon dioxide equivalent (MTCO<sub>2</sub>E)
- saved 84.1 million BTUs

WARM is available both as a [Web-based calculator](#) and as a [Microsoft Excel spreadsheet](#) (317K WinZip archive). <http://epa.gov/climatechange/index.html>

# MSW Processing and Disposal

In Minnesota, waste is managed through four main methods: landfills, MSW composting, resource recovery facilities, and on-site disposal. In 2008, waste that was not recycled or prevented/reduced and, therefore, must be disposed of, totaled nearly 3.1 million tons—a decrease of over 219,056 tons (-6.5 percent) from 2007. This number includes waste landfilled and processed, as well as estimates for on-site disposal and PMNR.

**Figure 4: MSW processing and disposal in Minnesota**

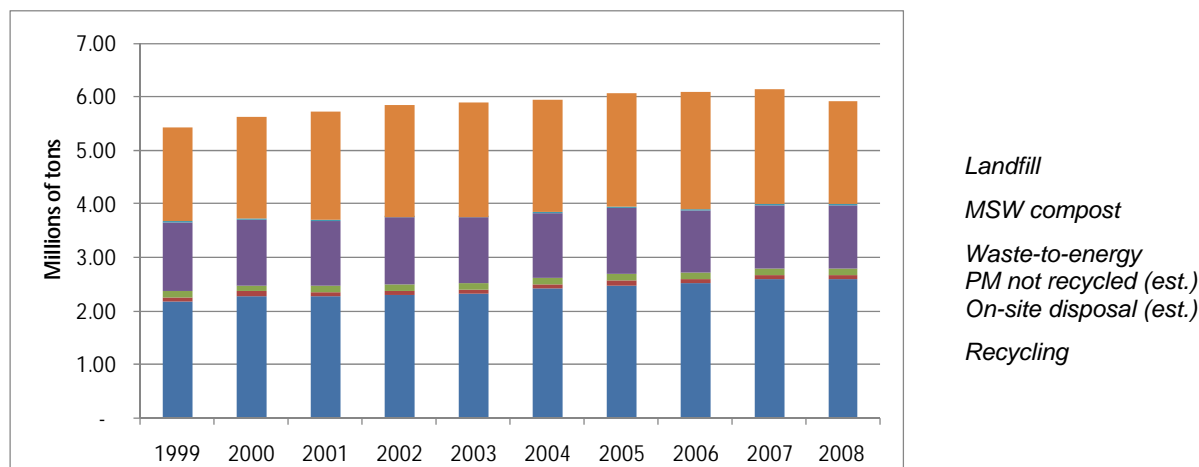


## Trends in waste disposal

Waste management in Minnesota is guided by a hierarchy that prioritizes waste reduction, recycling, composting, and resource recovery. During 2008:

- MSW composting decreased slightly by 1.7 percent—from 17,930 tons in 2007 to 17,630 in 2008.
- On-site disposal (estimates from county staff on the level of on-site dumping and burning that occurs) increased by 0.6 percent (more than 394 tons) to 71,423 tons.
- Waste-to-energy (WTE) in comparing tonnages from the previous year, 2007, the 2008 tonnage decreased by 1.3 percent (15,264 tons) to 1,187,680 tons. Permitted capacity remained the same in 2008; facility downtime for improvements or repairs accounts for some of the decreases of waste handled by WTE facilities in 2008.
- Landfilling decreased by 203,492 tons, or -9.5 percent to 1,935,188 tons. Landfilling, is the most dominant disposal method, and in turn saw the largest decrease. Despite being the least-preferred option, landfilling remains the dominant disposal method in Minnesota.
- PMNR (Problem Materials Not Recycled) increased by 1,058 tons or by 0.9 percent to 125,075 tons. PMNR tonnages consist of reported tonnages, most of the tonnage is a calculated tonnage based on population and the amount generated, minus the amount recycled.

**Figure 5: Trends in Minnesota waste management in tons**



Trends in Tons	1999	2000	2001	2002	2003	2004	2005	2006	2007	2008	Change 2007-08
Landfill	1.79	1.91	2.03	2.11	2.16	2.12	2.12	2.20	2.14	1.94	(9.5%)
MSW compost	0.02	0.01	0.01	0.01	0.01	0.01	0.02	0.02	0.02	0.02	(1.7%)
Waste to energy	1.30	1.23	1.22	1.26	1.23	1.21	1.24	1.16	1.20	1.19	(1.3%)
PMNR	0.11	0.11	0.11	0.12	0.12	0.12	0.12	0.12	0.12	0.13	0.9%
On-site disposal	.08	0.10	0.09	0.08	0.08	0.08	0.08	0.08	0.08	0.07	0.6%
Recycling	2.17	2.27	2.27	2.29	2.32	2.42	2.49	2.52	2.58	2.59	0.2%
Total	5.47	5.63	5.74	5.88	5.92	5.98	6.09	6.10	6.14	5.93	(3.5%)

Figures in millions of tons

## Out-of-state waste flow

In tracking the trends of the amount of waste generated, and where that waste is processed and disposed of, we find that in 2008, 604,287 tons left Minnesota. This equates to 19 percent of the total waste landfilled or processed at a Waste to Energy facility is taken out of state. To break that amount further, 10,923 tons were processed at a Waste to Energy facility and 593,364 tons were landfilled in the states of Iowa, North Dakota, South Dakota, and Wisconsin. In comparing 2008 to 2007, there is a decrease of 100,560 tons (-14 percent) in the amount of MSW leaving Minnesota.

While many factors may contribute to this decline in out-of-state waste flow (facility locations, hauling companies in operation, existing contracts, surcharges and tip fees, and gas prices), the economy, increasing state surcharges from Wisconsin and rising transportation costs likely have the most impact. The price of diesel is probably the largest reason for the decline in MSW leaving Minnesota. In 2008, petroleum prices began in January at \$3.159 and ended December at a low of \$1.67; the month of July, gas prices showed to be the highest at \$4.165:

[http://tonto.eia.doe.gov/dnav/pet/hist/mg\\_tt\\_usw.htm](http://tonto.eia.doe.gov/dnav/pet/hist/mg_tt_usw.htm).

MSW leaving Minnesota	
2001	671,954 tons
2002	614,002 tons
2003	702,131 tons
2004	850,204 tons
2005	812,379 tons
2006	742,093 tons
2007	705,631 tons
2008	615,210 tons



# Funding of SCORE Programs

---

Minnesota boasts one of the best recycling rates in the nation due to the level of participation by our residents and businesses, along with comprehensive recycling programs at the township, city, and county levels—programs funded by local government and state revenues.

In 2008, Minnesota counties spent \$57.8 million for SCORE-related programs, an increase of \$1,934,546 (3.5 percent) from 2007. Continued funding commitments from the Legislature and significant investments at the local level provide the funding for these programs.

## State funding: SCORE block grants

From the inception of SCORE, state tax revenue has provided a long-standing funding source for recycling and waste reduction programs. The Legislature, in 1989, set up a funding source for SCORE by passing Minn. Stat. § 297A: General Sales Tax and Distribution (SCORE). The rate of tax on residential generators of mixed municipal solid waste management services set in 297H.02 is 9.75 percent. In Minn. Stat. §297H.03, commercial generators tax rate for solid waste management services was set at 17 percent. Industrial and construction debris, meeting definitions in Minn. Stat. § 115A.03, set in 297H.04 is taxed at 60 cents per cubic yard. Infectious waste, defined in Minn. Stat. § 116.76, is taxed at 60 cents per 150 pounds.

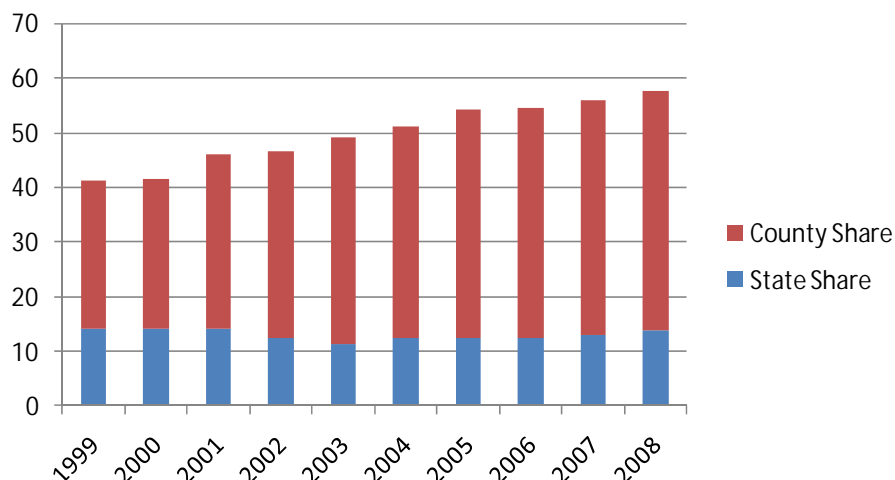
In fiscal year 2008, total solid waste tax received was \$67.3 million. Of that amount, \$20.2 million was deposited into the general fund, and \$47.1 million was deposited into the environmental fund. Appropriations from the environmental fund pay for SCORE grants as well as many other solid waste programs. Greater Minnesota counties received over \$7 million and the seven Metropolitan Area counties received over \$6.9 million. In Minn. Stat. § 115A.557, the Legislators describe how the SCORE disbursements are appropriated to counties. SCORE disbursement dollars are to be distributed each fiscal year based on population, with an established per county base minimum of \$55,000.

Money from the state is passed on to the county level in the form of annual block grants as described in Minn. Stat. § 115A.557. SCORE disbursements are to be appropriated to counties each fiscal year based on population. In the 2007 session, the Legislature and Governor Pawlenty took action to restore SCORE funds to the levels of 2002, or \$14 million per year. \$13.8 million was disbursed in calendar year 2008, which is approximately 24 percent of the amount spent on SCORE-related programs.

Restored SCORE grant dollars to previous levels of \$14 million and the state's renewed interest in its commitment to recycling and product stewardship, presents counties the ability to restore their reduced or cut programs. Additional funding could enhance the ability to remove usable materials from the disposal system and capture energy and economic benefits for the state.

Despite the economic value of the recycling industry to the state's economy, Minnesota's recycling infrastructure faces challenges. Some counties are dealing with budget reductions by closing down recycling centers or limiting the types of materials they collect. Plastic and glass recycling have been eliminated in some communities. Rural recycling programs, in particular, are facing more obstacles in getting materials to distant markets. The MPCA continues to explore ways to better support county recycling programs and secondary markets, recover more recyclable and organic material from the waste stream, and identify more opportunities to reduce, reuse, and recycle in the manufacturing and business sectors.

**Figure 6: SCORE expenditures (millions of dollars)**



## County funding

Within certain guidelines, counties have broad discretion in determining how to spend SCORE block grants and local matching funds, which gives them flexibility to develop programs that best meet local needs. The MPCA monitors the counties' use of SCORE grants to ensure the money is used to fund SCORE-eligible programs: source reduction, recycling, market development, management of problem materials, waste education, litter prevention, technical assistance to ensure proper solid waste management, and waste processing (Minn. Stat. § 115A.55).

Between 1999 and 2008, overall SCORE expenditures have increased by 40 percent. These increases have been funded entirely at the local level by counties and cities through use of general revenue dollars, special assessments, or other sources of revenue. In 2008, a total of \$57.8 million was spent on SCORE expenditures. Greater Minnesota counties *increased* expenditures by \$2.4 million (7.5 percent) and the Metropolitan Area counties *decreased* their spending by \$499,313 (-2.1 percent) from 2007.

County Expenditure	1999	2000	2001	2002	2003	2004	2005	2006	2007	2008	Change 2007-08
Greater Minnesota	22.9	23.1	25.8	26.7	29.5	28.5	30.22	31.25	32.54	34.98	7.5%
Metropolitan Area	18.3	18.5	20.2	19.9	19.7	22.6	24.06	23.35	23.38	22.88	(2.1%)
<b>Total</b>	<b>41.3</b>	<b>41.6</b>	<b>46.0</b>	<b>46.7</b>	<b>49.1</b>	<b>51.1</b>	<b>54.28</b>	<b>54.60</b>	<b>55.9</b>	<b>57.86</b>	<b>3.5%</b>

*Figure in millions of dollars. The annual SCORE survey includes only county spending; local units of government also fund programs for waste management, reduction, and recycling.*

Minn. Stat. § 115A.557 requires each county to match the funding from the Legislature with a local contribution of at least 25 percent. In 2008, county funds continued to exceed this match, spending over \$44 million or 76 percent of the amount spent toward SCORE-related activities. This investment is in addition to undocumented dollars spent by other local units of government, such as cities and townships, on programs such as recycling, household hazardous waste, and waste education.

In 2008, counties' increase in spending, in part, is due to economic recession and market price drops experienced in the fall of 2008, along with SCORE dollars not keeping up with inflation. These spending increases, by counties, have paid for additional costs to recycling, source reduction, education, and market development programs. County grants to other local units of government increased as the amount spent on county planning, oversight and administration decreased.

Counties face growing challenges to collect materials and deliver them to markets. Counties' declining dollars are not covering their existing recycling programs and have been hard pressed to expand their recycling programs. Counties are aware of the millions of tons of remaining recyclables in the waste stream along with the missed economic and environmental benefits associated with recycling.

# **Appendix A:**

## **County SCORE Survey Responses**

**County Survey Responses**  
**Finances: Revenues (part 1)**

County	CY2007 revenue carried over	Adjustment to carryover	General revenue	Service fee	Processing facility tip fee
Aitkin	\$147,437	0	\$200,962	\$400	\$0
Anoka	\$184,488	0	\$65,236	\$714,841	\$0
Becker	(\$124,070)	124,070	\$0	\$192,062	\$0
Beltrami	\$0	0	\$0	\$499,898	\$0
Benton	\$0	0	\$0	\$160,847	\$0
Big Stone	(\$34,281)	34,281	\$115,590	\$526	\$0
Blue Earth	\$0	0	\$109,822	\$0	\$0
Brown	\$0	0	\$298,041	\$0	\$0
Carlton	(\$68,148)	68,148	\$0	\$0	\$58,995
Carver	\$0	0	\$0	\$462,933	\$0
Cass	\$0	0	\$0	\$775,055	\$0
Chippewa	\$0	0	\$91,761	\$0	\$0
Chisago	(\$13,576)	0	\$0	\$161,013	\$0
Clay	\$186,096	0	\$0	\$313,871	\$0
Clearwater	\$0	0	\$0	\$61,742	\$0
Cook	\$0	0	\$179,230	\$0	\$0
Cottonwood	\$166,376	0	\$185,597	\$0	\$0
Crow Wing	\$0	0	\$424,008	\$0	\$81,591
Dakota	\$0	0	\$0	\$0	\$0
Dodge	\$112,446	0	\$173,830	\$23,844	\$33,999
Faribault	\$0	0	\$34,225	\$0	\$0
Fillmore	(\$29,045)	29,045	\$13,750	\$0	\$0
Freeborn	\$0	0	\$341,335	\$1,140	\$0
Goodhue	\$115,938	0	\$347,793	\$0	\$0
Grant	\$33,317	0	\$36,065	\$121,888	\$0
Hennepin	\$0	0	\$0	\$3,403,207	\$26,894
Houston	\$0	0	\$165,522	\$0	\$0
Hubbard	\$0	0	\$13,750	\$488,753	\$0
Isanti	\$101,622	0	\$23,714	\$0	\$0
Itasca	\$0	0	\$345,255	\$0	\$0
Jackson	\$142,198	0	\$13,750	\$0	\$0
Kanabec	\$74,004	0	\$12,375	\$0	\$0
Kandiyohi	\$0	0	\$0	\$201,944	\$0
Kittson	\$0	0	\$96,329	\$0	\$47,849
Koochiching	\$0	0	\$67,439	\$67,439	\$10,683
Lac qui Parle	\$27,835	0	\$98,184	\$0	\$0
Lake	\$0	0	\$150,188	\$0	\$11,159
Lake of The Woods	\$0	0	\$87,681	\$0	\$0
Le Sueur	\$0	0	\$107,896	\$0	\$0
Lincoln	\$43,705	0	\$78,248	\$225	\$0
Lyon	\$0	0	\$0	\$308,899	\$0
Mahnomen	\$34,925	0	\$0	\$13,750	\$0
Marshall	\$0	0	\$5,412	\$0	\$0
Martin	\$57,409	0	\$182,284	\$0	\$0
McLeod	\$5,082	0	\$0	\$0	\$224,009
Meeker	\$20,198	0	\$15,000	\$0	\$0
Mille Lacs	\$49,019	0	\$113,797	\$0	\$0
Morrison	\$0	0	\$167,511	\$0	\$0

**County Survey Responses**  
**Finances: Revenues (part 1)**

County	CY2007 revenue carried over	Adjustment to carryover	General revenue	Service fee	Processing facility tip fee
Mower	\$0	0	\$0	\$269,046	\$0
Murray	\$28,729	0	\$13,750	\$0	\$0
Nicollet	\$0	0	\$266,018	\$0	\$0
Nobles	\$162,847	0	\$5,551	\$61,389	\$0
Norman	(\$240)	0	\$39,184	\$0	\$0
Olmsted	\$216,739	0	\$0	\$0	\$208,175
Otter Tail	\$15,200	0	\$0	\$696,591	\$0
Pennington	\$43,608	0	\$13,750	\$0	\$0
Pine	(\$8,595)	8,595	\$291,109	\$0	\$0
Pipestone	\$0	0	\$189,733	\$0	\$0
Polk	\$145,632	0	\$0	\$183,712	\$0
Pope/Douglas	(\$36,726)	36,726	\$250,000	\$0	\$0
Ramsey	\$634,318	0	\$0	\$4,699,678	\$0
Red Lake	\$0	0	\$8,835	\$0	\$0
Redwood	(\$1,041)	1,041	\$306,798	\$0	\$0
Renville	\$99,431	0	\$186,600	\$0	\$2,000
Rice	\$31,553	0	\$0	\$446,684	\$0
Rock	\$1,770	0	\$70,028	\$0	\$0
Roseau	(\$39,107)	39,107	\$0	\$0	\$0
Scott	\$978,269	0	\$179,513	\$31,432	\$0
Sherburne	\$167,158	0	\$0	\$0	\$0
Sibley	\$0	0	\$128,826	\$0	\$0
St. Louis - partial	\$0	0	\$0	\$399,318	\$0
Stearns	\$91,995	0	\$73,450	\$133,487	\$0
Steele	\$0	0	\$0	\$346,313	\$0
Stevens	\$26,120	0	\$57,020	\$0	\$0
Swift	\$26,792	0	\$154,835	\$0	\$0
Todd	\$0	0	\$274,960	\$0	\$0
Traverse	(\$37,366)	37,366	\$13,750	\$0	\$0
Wabasha	\$0	0	\$89,651	\$0	\$0
Wadena	\$0	0	\$116,403	\$0	\$16,244
Waseca	\$0	0	\$0	\$75,345	\$0
Washington	\$0	0	\$0	\$853,639	\$0
Watsonwan	\$417,148	0	\$13,536	\$170,376	\$0
Wilkin	\$0	0	\$0	\$83,076	\$0
Winona	\$53,108	0	\$236,291	\$450,854	\$0
WLSSD	\$0	0	\$0	\$1,579,634	\$324,092
Wright	\$297,990	0	\$101,349	\$20,249	\$0
Yellow Medicine	\$0	0	\$12,201	\$54,222	\$0
<hr/>					
Metro Area	\$985,964	\$0	\$65,236	\$10,134,298	\$26,894
Greater Minn.	\$3,562,343	\$378,379	\$7,389,485	\$8,395,022	\$1,018,797
Minnesota	\$4,548,306	\$378,379	\$7,454,721	\$18,529,320	\$1,045,691

**County Survey Responses**  
**Finances: Revenues (part 2)**

County	SCORE pass-through	Grants	HHW funding	Material sales	Other
Aitkin	\$55,000	\$2,485	\$2,466	\$0	\$0
Anoka	\$809,566	\$135,828	\$0	\$32,327	\$71,846
Becker	\$79,060	\$57,618	\$12,109	\$0	\$31,688
Beltrami	\$106,020	\$0	\$8,107	\$0	\$0
Benton	\$95,796	\$0	\$923	\$0	\$29,159
Big Stone	\$55,000	\$0	\$2,400	\$0	\$200
Blue Earth	\$145,629	\$0	\$49,352	\$0	\$45,698
Brown	\$64,741	\$0	\$3,502	\$0	\$11,589
Carlton	\$83,687	\$13,347	\$6,469	\$0	\$0
Carver	\$214,230	\$106,594	\$0	\$0	\$192,553
Cass	\$70,783	\$0	\$7,125	\$33,353	\$0
Chippewa	\$55,000	\$0	\$2,400	\$103	\$13,914
Chisago	\$123,561	\$70,137	\$20,878	\$3,895	\$21,994
Clay	\$135,365	\$0	\$9,150	\$0	\$8,379
Clearwater	\$55,000	\$0	\$5,664	\$17,936	\$0
Cook	\$55,000	\$0	\$0	\$78,913	\$0
Cottonwood	\$55,000	\$0	\$0	\$9,582	\$20,818
Crow Wing	\$150,205	\$0	\$8,867	\$0	\$0
Dakota	\$964,579	\$0	\$0	\$0	\$92,536
Dodge	\$55,000	\$0	\$3,608	\$181,840	\$4,391
Faribault	\$55,000	\$0	\$0	\$0	\$4,102
Fillmore	\$55,000	\$0	\$0	\$0	\$0
Freeborn	\$77,510	\$0	\$6,367	\$0	\$6,306
Goodhue	\$113,093	\$0	\$9,029	\$164,507	\$0
Grant	\$55,000	\$0	\$0	\$0	\$7,397
Hennepin	\$2,833,991	\$301,572	\$35,346	\$2,517,976	\$187,872
Houston	\$27,500	\$0	\$4,278	\$171,072	\$18,717
Hubbard	\$55,000	\$0	\$3,859	\$34,169	\$0
Isanti	\$94,857	\$0	\$2,143	\$0	\$0
Itasca	\$108,734	\$0	\$4,483	\$3,922	\$0
Jackson	\$55,000	\$0	\$0	\$0	\$15,146
Kanabec	\$55,000	\$0	\$1,182	\$0	\$0
Kandiyohi	\$102,387	\$0	\$55,205	\$453,751	\$93,486
Kittson	\$55,000	\$0	\$5,412	\$39,365	\$22,467
Koochiching	\$55,000	\$0	\$2,969	\$31,190	\$1,161
Lac qui Parle	\$55,000	\$0	\$2,400	\$0	\$904
Lake	\$55,000	\$0	\$8,533	\$30,589	\$124
Lake of The Woods	\$55,000	\$0	\$0	\$51,252	\$135
Le Sueur	\$68,383	\$0	\$3,258	\$52,606	\$14,522
Lincoln	\$55,000	\$13,275	\$0	\$0	\$8,209
Lyon	\$61,270	\$0	\$45,788	\$1,075	\$26,130
Mahnomen	\$55,000	\$0	\$2,805	\$0	\$0
Marshall	\$55,000	\$0	\$5,815	\$33,562	\$5,569
Martin	\$55,000	\$0	\$0	\$0	\$4,302
McLeod	\$91,001	\$0	\$10,432	\$516,397	\$92,787
Meeker	\$57,405	\$0	\$3,368	\$0	\$1,012
Mille Lacs	\$64,078	\$0	\$847	\$0	\$0
Morrison	\$80,906	\$0	\$4,676	\$0	\$218,597
Mower	\$94,812	\$0	\$7,709	\$249,451	\$900
Murray	\$55,000	\$0	\$0	\$0	\$24,946



**County Survey Responses**  
**Finances: Revenues (part 2)**

County	SCORE pass-through	Grants	HHW funding	Material sales	Other
Nicollet	\$78,491	\$0	\$5,709	\$0	\$10,373
Nobles	\$55,000	\$0	\$0	\$0	\$10,708
Norman	\$55,000	\$0	\$2,820	\$0	\$0
Olmsted	\$340,628	\$0	\$113,647	\$0	\$979,277
Otter Tail	\$143,533	\$0	\$32,074	\$662,224	\$35,883
Pennington	\$55,000	\$0	\$0	\$489	\$0
Pine	\$69,423	\$0	\$0	\$0	\$0
Pipestone	\$55,000	\$0	\$0	\$0	\$0
Polk	\$76,237	\$0	\$7,477	\$115,466	\$10,412
Pope/Douglas	\$142,481	\$0	\$10,059	\$0	\$600
Ramsey	\$1,266,308	\$178,389	\$0	\$0	\$83,086
Red Lake	\$55,000	\$0	\$5,337	\$4,599	\$327
Redwood	\$55,000	\$0	\$34,553	\$201,376	\$0
Renville	\$0	\$0	\$2,400	\$0	\$0
Rice	\$153,796	\$0	\$22,584	\$623,763	\$53,685
Rock	\$55,000	\$0	\$0	\$0	\$10,842
Roseau	\$55,000	\$0	\$6,294	\$44,387	\$7,055
Scott	\$298,584	\$0	\$0	\$0	\$1,533
Sherburne	\$210,202	\$0	\$4,873	\$0	\$1,733
Sibley	\$55,000	\$0	\$2,072	\$41,040	\$10,121
St. Louis - partial	\$229,939	\$0	\$14,566	\$707,993	\$0
Stearns	\$356,185	\$0	\$4,684	\$0	\$76,394
Steele	\$89,130	\$0	\$4,065	\$0	\$2,700
Stevens	\$55,000	\$0	\$0	\$0	\$427
Swift	\$55,000	\$0	\$2,400	\$141,666	\$0
Todd	\$0	\$0	\$4,684	\$100,948	\$0
Traverse	\$55,000	\$0	\$0	\$0	\$0
Wabasha	\$55,142	\$0	\$3,581	\$138	\$1,350
Wadena	\$55,000	\$0	\$2,711	\$0	\$0
Waseca	\$55,000	\$0	\$2,710	\$225,435	\$696
Washington	\$565,829	\$115,394	\$0	\$0	\$117,321
Watsonwan	\$55,000	\$0	\$2,176	\$2,054	\$8,061
Wilkin	\$55,000	\$0	\$0	\$169,484	\$1,200
Winona	\$122,514	\$0	\$21,266	\$110,414	\$11,837
WLSSD	\$251,534	\$24,148	\$222,866	\$90,791	\$114,253
Wright	\$548,129	\$1,197	\$10,700	\$6,692	\$9,105
Yellow Medicine	\$55,000	\$0	\$0	\$0	\$119
<hr/>					
Metro Area	\$6,864,705	\$837,778	\$40,219	\$2,550,303	\$746,946
Greater Minn.	\$7,252,529	\$182,208	\$875,014	\$5,407,489	\$2,111,708
Minnesota	\$14,117,234	\$1,019,986	\$915,233	\$7,957,792	\$2,858,654

**County Survey Responses**  
**Finances: Revenue summary**

County	Adjusted CY2007 revenue (carried over) CY2008	revenue	Total revenue
Aitkin	\$147,437	\$261,313	\$408,750
Anoka	\$184,488	\$1,829,644	\$2,014,132
Becker	\$0	\$372,537	\$372,537
Beltrami	\$0	\$614,025	\$614,025
Benton	\$0	\$286,724	\$286,724
Big Stone	\$0	\$173,716	\$173,716
Blue Earth	\$0	\$350,501	\$350,501
Brown	\$0	\$377,873	\$377,873
Carlton	\$0	\$162,498	\$162,498
Carver	\$0	\$976,310	\$976,310
Cass	\$0	\$886,316	\$886,316
Chippewa	\$0	\$163,178	\$163,178
Chisago	(\$13,576)	\$401,477	\$387,901
Clay	\$186,096	\$466,765	\$652,861
Clearwater	\$0	\$140,342	\$140,342
Cook	\$0	\$313,143	\$313,143
Cottonwood	\$166,376	\$270,997	\$437,373
Crow Wing	\$0	\$664,671	\$664,671
Dakota	\$0	\$2,080,202	\$2,080,202
Dodge	\$112,446	\$476,512	\$588,958
Faribault	\$0	\$93,327	\$93,327
Fillmore	\$0	\$68,750	\$68,750
Freeborn	\$0	\$432,658	\$432,658
Goodhue	\$115,938	\$634,422	\$750,361
Grant	\$33,317	\$220,350	\$253,667
Hennepin	\$0	\$9,306,858	\$9,306,858
Houston	\$0	\$387,089	\$387,089
Hubbard	\$0	\$595,531	\$595,531
Isanti	\$101,622	\$120,714	\$222,336
Itasca	\$0	\$462,394	\$462,394
Jackson	\$142,198	\$83,896	\$226,094
Kanabec	\$74,004	\$68,557	\$142,561
Kandiyohi	\$0	\$906,773	\$906,773
Kittson	\$0	\$266,422	\$266,422
Koochiching	\$0	\$235,882	\$235,882
Lac qui Parle	\$27,835	\$156,489	\$184,324
Lake	\$0	\$255,593	\$255,593
Lake of The Woods	\$0	\$194,068	\$194,068
Le Sueur	\$0	\$246,666	\$246,666
Lincoln	\$43,705	\$154,957	\$198,662
Lyon	\$0	\$544,162	\$544,162
Mahnomen	\$34,925	\$71,555	\$106,480
Marshall	\$0	\$105,359	\$105,359
Martin	\$57,409	\$241,586	\$298,995
McLeod	\$5,082	\$1,929,228	\$1,934,310
Meeker	\$20,198	\$76,785	\$96,983
Mille Lacs	\$49,019	\$178,722	\$227,741
Morrison	\$0	\$471,690	\$471,690

**County Survey Responses**  
**Finances: Revenue summary**

County	Adjusted CY2007 revenue (carried over) CY2008	revenue	Total revenue
Mower	\$0	\$621,918	\$621,918
Murray	\$28,729	\$93,696	\$122,425
Nicollet	\$0	\$360,591	\$360,591
Nobles	\$162,847	\$409,406	\$572,253
Norman	(\$240)	\$97,004	\$96,764
Olmsted	\$216,739	\$1,641,727	\$1,858,466
Otter Tail	\$15,200	\$1,570,306	\$1,585,506
Pennington	\$43,608	\$69,239	\$112,847
Pine	\$0	\$360,532	\$360,532
Pipestone	\$0	\$244,733	\$244,733
Polk	\$145,632	\$393,304	\$538,937
Pope/Douglas	\$0	\$403,140	\$403,140
Ramsey	\$634,318	\$6,227,461	\$6,861,779
Red Lake	\$0	\$74,097	\$74,097
Redwood	\$0	\$597,727	\$597,727
Renville	\$99,431	\$191,000	\$290,431
Rice	\$31,553	\$1,300,512	\$1,332,065
Rock	\$1,770	\$135,870	\$137,640
Roseau	\$0	\$112,736	\$112,736
Scott	\$978,269	\$555,785	\$1,534,054
Sherburne	\$167,158	\$337,762	\$504,920
Sibley	\$0	\$237,059	\$237,059
St. Louis - partial	\$0	\$1,351,816	\$1,351,816
Stearns	\$91,995	\$644,200	\$736,195
Steele	\$0	\$442,208	\$442,208
Stevens	\$26,120	\$112,447	\$138,567
Swift	\$26,792	\$353,901	\$380,693
Todd	\$0	\$380,592	\$380,592
Traverse	\$0	\$68,750	\$68,750
Wabasha	\$0	\$149,862	\$149,862
Wadena	\$0	\$190,359	\$190,359
Waseca	\$0	\$359,186	\$359,186
Washington	\$0	\$1,652,183	\$1,652,183
Watonwan	\$417,148	\$251,202	\$668,350
Wilkin	\$0	\$308,760	\$308,760
Winona	\$53,108	\$953,176	\$1,006,284
WLSSD	\$0	\$2,607,319	\$2,607,319
Wright	\$297,990	\$697,421	\$995,411
Yellow Medicine	\$0	\$149,873	\$149,873
<hr/>			
Metro Area	\$985,964	\$22,410,420	\$23,396,383
Greater Minn.	\$3,940,722	\$34,077,665	\$38,018,387
Minnesota	\$4,926,686	\$56,488,084	\$61,414,770

**County Survey Responses**  
**Finances: Expenditures by program area (part 1)**

County	Planning & administration	Recycling	Yard waste	HHW and problem materials	Source reduction
Aitkin	\$134,907	\$76,173	\$400	\$14,678	\$300
Anoka	\$605,086	\$24,106	\$110,178	\$350,213	\$31,818
Becker	\$176,933	\$185,640	\$2,270	\$179,016	\$0
Beltrami	\$1	\$578,400	\$0	\$15,415	\$0
Benton	\$127,481	\$6,545	\$0	\$59,802	\$16,838
Big Stone	\$64,253	\$142,672	\$0	\$9,434	\$0
Blue Earth	\$72,596	\$154,299	\$0	\$84,643	\$0
Brown	\$31,661	\$292,451	\$0	\$46,818	\$0
Carlton	\$61,415	\$79,470	\$1,880	\$42,037	\$0
Carver	\$417,628	\$103,503	\$39,867	\$302,416	\$2,488
Cass	\$107,511	\$664,258	\$2,140	\$112,407	\$0
Chippewa	\$21,970	\$123,320	\$0	\$17,558	\$0
Chisago	\$170,570	\$57,000	\$0	\$137,396	\$0
Clay	\$199,078	\$288,710	\$38,317	\$94,668	\$0
Clearwater	\$27,884	\$79,609	\$1,201	\$30,394	\$0
Cook	\$230,597	\$79,378	\$0	\$2,666	\$0
Cottonwood	\$154,231	\$56,627	\$0	\$4,167	\$0
Crow Wing	\$169,005	\$81,968	\$24,237	\$108,706	\$0
Dakota	\$533,724	\$17,197	\$0	\$844,552	\$0
Dodge	\$38,673	\$375,564	\$8,039	\$10,604	\$8,039
Faribault	\$22,403	\$23,045	\$0	\$4,444	\$0
Fillmore	\$0	\$68,750	\$0	\$0	\$0
Freeborn	\$102,850	\$306,331	\$0	\$17,338	\$0
Goodhue	\$370,751	\$150,728	\$0	\$33,331	\$0
Grant	\$0	\$156,921	\$0	\$18,402	\$0
Hennepin	\$1,644,085	\$1,323,266	\$80,110	\$2,799,208	\$150,276
Houston	\$20,713	\$323,655	\$0	\$40,172	\$0
Hubbard	\$70,932	\$347,858	\$3,729	\$153,384	\$0
Isanti	\$52,000	\$47,960	\$0	\$10,290	\$0
Itasca	\$88,028	\$322,752	\$0	\$46,998	\$38
Jackson	\$29,519	\$16,525	\$0	\$11,124	\$0
Kanabec	\$3,387	\$55,744	\$0	\$82	\$0
Kandiyohi	\$264,039	\$545,723	\$0	\$97,011	\$0
Kittson	\$33,177	\$930	\$0	\$8,693	\$0
Koochiching	\$109,485	\$101,619	\$2,500	\$15,994	\$0
Lac qui Parle	\$18,958	\$51,356	\$0	\$18,580	\$0
Lake	\$2,246	\$190,423	\$2,177	\$86,574	\$923
Lake of The Woods	\$6,055	\$161,007	\$1,165	\$23,520	\$0
Le Sueur	\$54,777	\$51,595	\$0	\$70,776	\$0
Lincoln	\$53,921	\$105,568	\$202	\$8,620	\$50
Lyon	\$57,255	\$308,412	\$0	\$137,892	\$1,000
Mahnomen	\$43,676	\$7,746	\$0	\$14,489	\$0
Marshall	\$29,451	\$0	\$0	\$11,027	\$0
Martin	\$29,830	\$190,276	\$308	\$8,035	\$298
McLeod	\$326,758	\$1,376,206	\$25,242	\$86,832	\$2,165
Meeker	\$10,257	\$21,989	\$0	\$13,078	\$0
Mille Lacs	\$61,851	\$95,074	\$0	\$18,688	\$0
Morrison	\$46,050	\$120,077	\$7,148	\$241,194	\$0
Mower	\$94,883	\$510,753	\$0	\$8,344	\$0

**County Survey Responses**  
**Finances: Expenditures by program area (part 1)**

County	Planning & administration	Recycling	Yard waste	HHW and problem materials	Source reduction
Murray	\$64,156	\$31,107	\$0	\$1,549	\$0
Nicollet	\$58,032	\$171,560	\$0	\$81,753	\$0
Nobles	\$103,311	\$200,861	\$0	\$109,318	\$0
Norman	\$17,111	\$60,879	\$0	\$17,288	\$0
Olmsted	\$57,055	\$700,618	\$115,974	\$466,959	\$133,701
Otter Tail	\$710,097	\$565,890	\$3,420	\$218,299	\$6,233
Pennington	\$21,434	\$11,158	\$0	\$8,602	\$0
Pine	\$46,400	\$353,143	\$0	\$50,262	\$0
Pipestone	\$24,351	\$122,024	\$0	\$93,591	\$0
Polk	\$34,667	\$217,744	\$7,252	\$64,584	\$0
Pope/Douglas	\$162,447	\$124,965	\$49,313	\$27,904	\$0
Ramsey	\$2,373,307	\$268,645	\$848,150	\$1,041,408	\$60,000
Red Lake	\$23,218	\$44,869	\$0	\$4,885	\$0
Redwood	\$263,382	\$210,033	\$537	\$62,832	\$4,800
Renville	\$81,863	\$120,885	\$0	\$41,737	\$0
Rice	\$494,150	\$1,319,631	\$42,500	\$371,581	\$500
Rock	\$61,498	\$53,626	\$2,890	\$19,229	\$700
Roseau	\$15,084	\$0	\$0	\$26,051	\$0
Scott	\$285,125	\$0	\$0	\$145,199	\$0
Sherburne	\$2,122	\$28,500	\$0	\$109,792	\$0
Sibley	\$49,283	\$37,519	\$0	\$56,801	\$0
St. Louis - partial	\$201,455	\$864,822	\$0	\$205,722	\$19,519
Stearns	\$164,128	\$51,766	\$14,826	\$176,220	\$14,826
Steele	\$116,806	\$290,416	\$0	\$11,542	\$0
Stevens	\$51,844	\$29,167	\$950	\$21,043	\$0
Swift	\$239,785	\$81,912	\$4,350	\$2,181	\$930
Todd	\$101,107	\$178,419	\$2,500	\$90,124	\$1,548
Traverse	\$51,532	\$40,455	\$0	\$11,504	\$0
Wabasha	\$91,198	\$43,453	\$0	\$15,211	\$0
Wadena	\$25,270	\$97,401	\$0	\$13,121	\$0
Waseca	\$75,876	\$198,097	\$2,475	\$78,526	\$0
Washington	\$231,778	\$42,597	\$0	\$824,760	\$7,606
Watonwan	\$11,656	\$224,788	\$0	\$25,355	\$0
Wilkin	\$33,723	\$221,951	\$3,644	\$54,506	\$0
Winona	\$256,799	\$623,991	\$0	\$64,210	\$0
WLSSD	\$1,458,606	\$270,794	\$134,932	\$411,628	\$0
Wright	\$63,652	\$2,986	\$0	\$64,909	\$0
Yellow Medicine	\$2,932	\$132,347	\$0	\$6,496	\$0
Metro Area	\$5,807,730	\$1,807,814	\$1,078,304	\$6,272,349	\$252,189
Greater Minn.	\$9,311,050	\$16,680,385	\$506,517	\$5,296,044	\$212,406
Minnesota	\$15,118,780	\$18,488,199	\$1,584,821	\$11,568,393	\$464,595

**County Survey Responses**  
**Finances: Expenditures by program area (part 2)**

County	Education	Market development	Litter prevention	County grants to other local units of government
Aitkin	\$2,754	\$0	\$0	\$0
Anoka	\$166,817	\$0	\$0	\$725,914
Becker	\$5,790	\$0	\$1,500	\$57,618
Beltrami	\$20,209	\$0	\$0	\$0
Benton	\$21,887	\$0	\$0	\$54,172
Big Stone	\$1,975	\$0	\$0	\$0
Blue Earth	\$37,405	\$0	\$1,556	\$0
Brown	\$6,943	\$0	\$0	\$0
Carlton	\$5,851	\$0	\$0	\$15,000
Carver	\$15,966	\$0	\$1,358	\$93,084
Cass	\$0	\$0	\$0	\$0
Chippewa	\$330	\$0	\$0	\$0
Chisago	\$22,935	\$0	\$0	\$0
Clay	\$26,435	\$0	\$0	\$0
Clearwater	\$1,254	\$0	\$0	\$0
Cook	\$502	\$0	\$0	\$0
Cottonwood	\$4,621	\$0	\$0	\$0
Crow Wing	\$30,429	\$0	\$1,226	\$249,100
Dakota	\$292,915	\$0	\$0	\$391,814
Dodge	\$35,069	\$900	\$0	\$0
Faribault	\$1,171	\$0	\$890	\$41,374
Fillmore	\$0	\$0	\$0	\$0
Freeborn	\$18,996	\$0	\$0	\$0
Goodhue	\$5,101	\$0	\$0	\$0
Grant	\$0	\$0	\$0	\$0
Hennepin	\$275,645	\$0	\$0	\$3,034,268
Houston	\$2,548	\$0	\$0	\$0
Hubbard	\$18,128	\$0	\$300	\$1,200
Isanti	\$450	\$0	\$0	\$2,000
Itasca	\$4,579	\$0	\$0	\$0
Jackson	\$11,747	\$0	\$0	\$0
Kanabec	\$2,619	\$0	\$0	\$0
Kandiyohi	\$0	\$0	\$0	\$0
Kittson	\$0	\$0	\$0	\$223,623
Koochiching	\$6,158	\$0	\$126	\$0
Lac qui Parle	\$1,097	\$0	\$0	\$0
Lake	\$2,963	\$923	\$0	\$0
Lake of The Woods	\$2,321	\$0	\$0	\$0
Le Sueur	\$52,060	\$0	\$0	\$17,459
Lincoln	\$2,461	\$0	\$100	\$0
Lyon	\$39,603	\$0	\$0	\$0
Mahnomen	\$2,012	\$0	\$0	\$0
Marshall	\$0	\$0	\$0	\$64,880
Martin	\$8,122	\$0	\$2,310	\$12,315
McLeod	\$49,162	\$0	\$0	\$67,946
Meeker	\$19,041	\$0	\$0	\$14,357
Mille Lacs	\$3,500	\$0	\$0	\$0
Morrison	\$1,812	\$0	\$0	\$55,409



**County Survey Responses**  
**Finances: Expenditures by program area (part 2)**

County	Education	Market development	Litter prevention	County grants to other local units of government
Mower	\$7,938	\$0	\$0	\$0
Murray	\$4,109	\$0	\$0	\$0
Nicollet	\$49,246	\$0	\$0	\$0
Nobles	\$12,426	\$0	\$0	\$0
Norman	\$1,486	\$0	\$0	\$0
Olmsted	\$225,349	\$0	\$0	\$0
Otter Tail	\$63,722	\$0	\$2,645	\$0
Pennington	\$745	\$0	\$0	\$0
Pine	\$500	\$0	\$0	\$0
Pipestone	\$1,641	\$0	\$0	\$3,126
Polk	\$9,364	\$0	\$0	\$15,000
Pope/Douglas	\$25,969	\$0	\$0	\$0
Ramsey	\$488,427	\$126,074	\$0	\$1,023,778
Red Lake	\$1,126	\$0	\$0	\$0
Redwood	\$15,325	\$0	\$265	\$0
Renville	\$6,297	\$0	\$0	\$0
Rice	\$17,300	\$1,850	\$200	\$0
Rock	\$4,566	\$0	\$0	\$0
Roseau	\$0	\$0	\$0	\$123,495
Scott	\$166,267	\$0	\$0	\$25,000
Sherburne	\$63,188	\$5,555	\$0	\$204,467
Sibley	\$38,456	\$0	\$0	\$54,999
St. Louis - partial	\$60,298	\$0	\$0	\$0
Stearns	\$28,198	\$14,826	\$14,826	\$217,280
Steele	\$23,444	\$0	\$0	\$0
Stevens	\$4,693	\$0	\$0	\$0
Swift	\$7,765	\$0	\$0	\$0
Todd	\$6,594	\$0	\$300	\$0
Traverse	\$1,010	\$0	\$0	\$4,000
Wabasha	\$0	\$0	\$0	\$0
Wadena	\$2,459	\$0	\$0	\$0
Waseca	\$4,211	\$0	\$0	\$0
Washington	\$186,882	\$0	\$0	\$358,560
Watsonwan	\$2,776	\$0	\$0	\$0
Wilkin	\$2,988	\$0	\$0	\$0
Winona	\$8,531	\$0	\$0	\$0
WLSSD	\$206,368	\$13,210	\$21,113	\$90,669
Wright	\$250	\$0	\$0	\$189,744
Yellow Medicine	\$8,099	\$0	\$0	\$0
<hr/>				
Metro Area	\$1,489,840	\$131,629	\$1,358	\$5,831,885
Greater Minn.	\$1,499,555	\$31,709	\$47,357	\$1,599,765
Minnesota	\$2,989,395	\$163,338	\$48,715	\$7,431,651

**County Survey Responses**  
**Finances: Balance Sheet**

County	Total revenues	Total expenditures	Balance
Aitkin	\$408,750	\$229,212	\$179,538
Anoka	\$2,014,132	\$2,014,132	(\$0)
Becker	\$372,537	\$608,768	(\$236,231)
Beltrami	\$614,025	\$614,025	\$0
Benton	\$286,724	\$286,724	\$0
Big Stone	\$173,716	\$218,334	(\$44,618)
Blue Earth	\$350,501	\$350,501	\$0
Brown	\$377,873	\$377,873	\$0
Carlton	\$162,498	\$205,653	(\$43,155)
Carver	\$976,310	\$976,310	(\$0)
Cass	\$886,316	\$886,316	\$0
Chippewa	\$163,178	\$163,178	\$0
Chisago	\$387,901	\$387,901	\$0
Clay	\$652,861	\$647,208	\$5,653
Clearwater	\$140,342	\$140,342	(\$0)
Cook	\$313,143	\$313,143	\$0
Cottonwood	\$437,373	\$219,646	\$217,727
Crow Wing	\$664,671	\$664,671	\$0
Dakota	\$2,080,202	\$2,080,202	\$0
Dodge	\$588,958	\$476,888	\$112,070
Faribault	\$93,327	\$93,327	\$0
Fillmore	\$68,750	\$68,750	\$0
Freeborn	\$432,658	\$445,515	(\$12,857)
Goodhue	\$750,361	\$559,912	\$190,449
Grant	\$253,667	\$175,323	\$78,344
Hennepin	\$9,306,858	\$9,306,858	\$0
Houston	\$387,089	\$387,089	\$0
Hubbard	\$595,531	\$595,531	\$0
Isanti	\$222,336	\$112,700	\$109,635
Itasca	\$462,394	\$462,394	\$0
Jackson	\$226,094	\$68,915	\$157,180
Kanabec	\$142,561	\$61,831	\$80,730
Kandiyohi	\$906,773	\$906,773	\$0
Kittson	\$266,422	\$266,422	\$0
Koochiching	\$235,882	\$235,882	\$0
Lac qui Parle	\$184,324	\$89,992	\$94,332
Lake	\$255,593	\$286,229	(\$30,636)
Lake of The Woods	\$194,068	\$194,068	\$0
Le Sueur	\$246,666	\$246,666	\$0
Lincoln	\$198,662	\$170,922	\$27,740
Lyon	\$544,162	\$544,162	\$0
Mahnomen	\$106,480	\$67,924	\$38,557
Marshall	\$105,359	\$105,359	\$0
Martin	\$298,995	\$251,494	\$47,501
McLeod	\$1,934,310	\$1,934,310	\$0
Meeker	\$96,983	\$78,722	\$18,261
Mille Lacs	\$227,741	\$179,113	\$48,628
Morrison	\$471,690	\$471,690	\$0
Mower	\$621,918	\$621,918	(\$0)

**County Survey Responses**  
**Finances: Balance Sheet**

County	Total revenues	Total expenditures	Balance
Murray	\$122,425	\$100,921	\$21,503
Nicollet	\$360,591	\$360,591	(\$0)
Nobles	\$572,253	\$425,916	\$146,337
Norman	\$96,764	\$96,764	(\$0)
Olmsted	\$1,858,466	\$1,699,656	\$158,810
Otter Tail	\$1,585,506	\$1,570,306	\$15,200
Pennington	\$112,847	\$41,939	\$70,908
Pine	\$360,532	\$450,306	(\$89,773)
Pipestone	\$244,733	\$244,733	\$0
Polk	\$538,937	\$348,610	\$190,327
Pope/Douglas	\$403,140	\$390,598	\$12,542
Ramsey	\$6,861,779	\$6,229,789	\$631,990
Red Lake	\$74,097	\$74,097	\$0
Redwood	\$597,727	\$557,175	\$40,553
Renville	\$290,431	\$250,782	\$39,649
Rice	\$1,332,065	\$2,247,712	(\$915,647)
Rock	\$137,640	\$142,509	(\$4,869)
Roseau	\$112,736	\$164,630	(\$51,894)
Scott	\$1,534,054	\$621,591	\$912,463
Sherburne	\$504,920	\$413,624	\$91,295
Sibley	\$237,059	\$237,059	\$0
St. Louis - partial	\$1,351,816	\$1,351,816	\$0
Stearns	\$736,195	\$696,896	\$39,299
Steele	\$442,208	\$442,208	\$0
Stevens	\$138,567	\$107,696	\$30,871
Swift	\$380,693	\$336,923	\$43,770
Todd	\$380,592	\$380,592	\$0
Traverse	\$68,750	\$108,501	(\$39,751)
Wabasha	\$149,862	\$149,862	\$0
Wadena	\$190,359	\$138,250	\$52,108
Waseca	\$359,186	\$359,186	\$0
Washington	\$1,652,183	\$1,652,183	\$0
Watsonwan	\$668,350	\$264,575	\$403,775
Wilkin	\$308,760	\$316,812	(\$8,052)
Winona	\$1,006,284	\$953,531	\$52,753
WLSSD	\$2,607,319	\$2,607,319	\$0
Wright	\$995,411	\$321,541	\$673,869
Yellow Medicine	\$149,873	\$149,873	\$0
<hr/>			
Metro Area	\$23,396,383	\$22,673,098	\$723,285
Greater Minn.	\$38,018,387	\$35,184,788	\$2,833,598
Minnesota	\$61,414,770	\$57,857,887	\$3,556,884

**County Survey Responses:**  
**Paper collected for recycling (tons)**

County	Computer paper	Corrugated	Magazine/ catalog	Mixed paper	Newsprint	Office paper	Other paper	Phone book	Total paper
Aitkin	0	694	0	313	0	0	0	0	1,007
Anoka	2	41,934	579	14,554	15,614	723	5,514	19	78,938
Becker	0	6,307	89	253	2,052	9	0	9	8,718
Beltrami	0	2,613	0	715	91	94	20	3	3,536
Benton	0	1,466	11,202	907	741	109	401	7	14,832
Big Stone	0	251	0	56	252	0	0	0	559
Blue Earth	0	15,991	1,268	6,053	3,256	182	0	0	26,751
Brown	0	3,166	0	3,336	921	21	1,772	0	9,216
Carlton	0	2,421	128	698	746	173	1	0	4,166
Carver	0	3,957	0	8,495	1,219	801	0	0	14,473
Cass	0	2,693	42	350	2,498	271	0	2	5,857
Chippewa	0	966	14	56	401	1	0	0	1,438
Chisago	225	2,326	0	98	2,201	200	0	25	5,075
Clay	0	2,593	157	574	1,042	314	0	24	4,704
Clearwater	0	209	0	75	0	0	0	2	286
Cook	0	492	119	0	94	39	0	0	744
Cottonwood	0	1,284	16	0	211	21	0	0	1,532
Crow Wing	0	5,228	158	4,923	1,698	19	0	28	12,053
Dakota	0	18,145	127	55,229	4,518	949	952	0	79,920
Dodge	0	777	69	852	0	89	8	0	1,794
Faribault	0	2,822	0	2,154	0	0	0	0	4,976
Fillmore	0	217	181	96	662	48	0	0	1,204
Freeborn	0	4,678	190	0	1,132	0	0	0	5,999
Goodhue	0	4,423	221	3,969	1,105	2,966	0	0	12,684
Grant	0	143	30	0	110	35	0	0	319
Hennepin	0	35,152	4,283	34,040	45,027	9,336	2,132	75	130,045
Houston	0	245	0	348	198	0	0	0	792
Hubbard	0	2,223	0	0	510	142	0	0	2,875
Isanti	0	2,447	0	7	835	0	0	0	3,289
Itasca	20	4,520	100	675	1,554	300	0	20	7,189
Jackson	0	1,243	0	0	356	129	0	0	1,728
Kanabec	0	518	0	0	144	0	1	0	663
Kandiyohi	0	3,862	342	507	757	68	53	18	5,607
Kittson	0	91	6	0	105	3	0	1	205
Koochiching	0	1,461	23	224	96	18	0	0	1,821
Lac qui Parle	0	470	0	0	203	37	0	0	711
Lake	0	871	74	111	303	52	0	0	1,411
Lake of The Woods	0	79	0	0	0	0	0	0	79
Le Sueur	129	1,051	0	743	0	73	0	0	1,996
Lincoln	0	245	0	32	218	0	0	0	495
Lyon	0	3,137	0	105	734	7	0	0	3,983
Mahnomen	0	142	8	0	42	0	0	0	192
Marshall	0	68	3	24	132	7	0	1	236
Martin	0	6,291	0	3,813	0	0	0	0	10,104
McLeod	0	1,780	0	52	146	34	0	0	2,012
Meeker	0	1,098	12	105	416	117	0	0	1,747
Mille Lacs	0	455	0	266	0	0	0	0	722

**County Survey Responses:**  
**Paper collected for recycling (tons)**

County	Computer paper	Corrugated	Magazine/ catalog	Mixed paper	Newsprint	Office paper	Other paper	Phone book	Total paper
Morrison	0	3,269	307	0	350	1,699	0	0	5,625
Mower	247	12,229	92	0	897	0	0	8	13,473
Murray	0	497	15	4	421	159	0	0	1,097
Nicollet	0	1,769	0	6,693	450	2,808	275	21	12,016
Nobles	0	4,367	0	0	198	171	860	0	5,596
Norman	0	44	0	0	35	0	0	1	80
Olmsted	0	12,576	470	5,462	4,235	3,291	12,233	17	38,284
Otter Tail	0	2,455	176	0	968	363	0	109	4,071
Pennington	0	961	43	0	185	112	0	0	1,301
Pine	0	160	0	140	0	0	783	0	1,083
Pipestone	0	1,041	0	57	388	0	1	0	1,487
Polk	0	2,031	0	475	0	44	0	7	2,556
Pope/Douglas	0	5,357	0	441	1,477	55	0	0	7,330
Ramsey	0	3,365	1,890	8,284	24,725	117	24	346	38,752
Red Lake	0	77	12	0	67	2	0	0	158
Redwood	110	2,807	217	182	284	409	0	0	4,009
Renville	0	418	0	498	552	0	0	0	1,468
Rice	0	11,271	0	3,124	0	0	0	3	14,398
Rock	0	602	0	0	180	35	0	0	817
Roseau	0	2,023	84	0	169	108	0	0	2,384
Scott	883	14,668	0	14,418	3,463	902	376	1	34,711
Sherburne	0	1,489	1,520	1,995	500	126	100	9	5,739
Sibley	0	482	0	368	105	3	0	0	958
St. Louis - partial	0	4,047	0	3,851	469	194	0	0	8,561
Stearns	0	9,670	9,460	3,837	3,253	4,286	232	43	30,780
Steele	0	5,233	2	1,416	0	1,605	503	0	8,759
Stevens	0	428	8	30	161	25	0	11	663
Swift	33	667	76	0	480	115	0	3	1,374
Todd	0	1,559	0	15,965	221	0	0	0	17,745
Traverse	0	115	30	0	86	31	0	0	262
Wabasha	0	5,210	203	0	846	30	0	0	6,290
Wadena	0	709	0	0	0	17	0	0	726
Waseca	0	3,360	65	1,186	183	347	28,186	7	33,334
Washington	0	15,103	336	15,531	19,699	12,866	87	117	63,740
Watonwan	0	645	0	0	1,108	0	0	0	1,753
Wilkin	17	389	14	0	176	0	0	0	596
Winona	1,054	6,407	0	4,058	776	0	0	0	12,295
WLSSD	0	13,775	225	8,904	1,320	1,314	423	0	25,960
Wright	4	7,997	31	186	3,985	5	0	0	12,207
Yellow Medicine	0	460	13	58	218	13	0	0	762
0									
Metro Area	885	132,323	7,216	150,552	114,266	25,694	9,086	558	440,579
Greater MN	1,839	220,648	27,514	91,422	50,706	22,944	45,851	377	461,300
Minnesota	2,723	352,971	34,729	241,973	164,972	48,638	54,937	935	901,879

**County Survey Responses**  
**Metal collected for recycling (tons)**

County	Aluminum	Co-mingled alum/steel/tin	Other ferrous & non-ferrous	Steel/tin cans	Total metal
Aitkin	110	0	667	96	874
Anoka	1,339	501	28,549	4,217	34,605
Becker	51	0	0	57	108
Beltrami	103	0	1,032	110	1,245
Benton	502	15,374	26,311	105	42,292
Big Stone	4	0	663	8	674
Blue Earth	9,684	0	8,106	1,112	18,901
Brown	58	733	2,749	0	3,540
Carlton	187	0	20	124	331
Carver	52	211	5,487	79	5,829
Cass	117	1,501	0	50	1,668
Chippewa	11	373	0	45	429
Chisago	272	0	671	201	1,144
Clay	65	0	7,888	100	8,053
Clearwater	23	21	653	0	697
Cook	18	0	160	31	209
Cottonwood	12	0	14	31	56
Crow Wing	198	0	22,858	404	23,460
Dakota	1,148	9,288	13,107	205	23,748
Dodge	17	0	3,685	62	3,764
Faribault	240	514	847	0	1,601
Fillmore	36	0	26	107	169
Freeborn	579	3,240	29	1,973	5,820
Goodhue	301	68	417	179	965
Grant	10	10	0	22	42
Hennepin	6,027	1,148	49,292	2,181	58,648
Houston	214	0	622	84	920
Hubbard	24	164	254	64	505
Isanti	439	228	897	4,592	6,156
Itasca	80	130	1,083	134	1,427
Jackson	38	0	670	30	738
Kanabec	0	15	0	702	717
Kandiyohi	246	0	8	101	355
Kittson	10	50	33	17	110
Koochiching	60	0	860	16	935
Lac qui Parle	41	86	636	0	763
Lake	18	22	339	46	425
Lake of The Woods	5	3	192	0	201
Le Sueur	32	171	2,256	407	2,866
Lincoln	66	0	11	12	89
Lyon	171	0	5,000	39	5,210
Mahnomen	11	0	51	10	71
Marshall	6	158	241	0	405
Martin	1,700	2,425	4,812	0	8,937
McLeod	56	0	342	19	417
Meeker	159	54	645	4	863
Mille Lacs	0	56	0	0	56
Morrison	0	166	4,290	0	4,456

**County Survey Responses**  
**Metal collected for recycling (tons)**

County	Aluminum	Co-mingled alum/steel/tin	Other ferrous & non-ferrous	Steel/tin cans	Total metal
Mower	188	0	50	115	353
Murray	99	229	120	22	470
Nicollet	219	897	296	23	1,435
Nobles	205	4,246	0	0	4,451
Norman	16	0	757	0	773
Olmsted	905	2,021	5,627	1,547	10,100
Otter Tail	286	863	4,379	142	5,671
Pennington	0	41	0	0	41
Pine	21	543	203	0	767
Pipestone	15	0	91	35	141
Polk	151	4	2,625	52	2,831
Pope/Douglas	1,146	0	346	567	2,059
Ramsey	2,592	757	1,111	14,139	18,598
Red Lake	1	27	250	6	284
Redwood	790	0	2,965	57	3,812
Renville	4	693	64	0	761
Rice	390	298	1,876	431	2,995
Rock	26	0	421	37	485
Roseau	65	0	599	85	749
Scott	590	1,710	12,691	827	15,817
Sherburne	181	20,503	2,204	68	22,956
Sibley	11	40	183	74	308
St. Louis - partial	530	2,927	40,633	824	44,914
Stearns	1,510	562	50,423	2,072	54,567
Steele	56	0	20	105	181
Stevens	77	0	315	154	546
Swift	138	0	59	90	287
Todd	29	0	190	42	262
Traverse	23	18	378	39	457
Wabasha	100	0	2,281	238	2,618
Wadena	0	160	4,702	0	4,862
Waseca	169	0	1,739	25	1,933
Washington	2,157	310	5,509	856	8,832
Watsonwan	13	0	0	13	26
Wilkin	57	0	57	11	124
Winona	615	0	11,757	0	12,372
WLSSD	496	1,537	10,855	160	13,047
Wright	182	5	33	482	702
Yellow Medicine	6	25	300	26	358
<hr/>					
Metro Area	13,905	13,924	115,745	22,504	166,078
Greater Minn.	24,693	61,199	246,835	18,636	351,363
Minnesota	38,597	75,123	362,580	41,141	517,441

**County Survey Responses**  
**Glass collected for recycling (tons)**

County	Food & beverage	Other glass	Total glass
Aitkin	102	0	102
Anoka	4,853	1,756	6,609
Becker	467	0	467
Beltrami	565	18	583
Benton	869	338	1,207
Big Stone	68	0	68
Blue Earth	1,033	0	1,033
Brown	343	0	343
Carlton	675	0	675
Carver	416	0	416
Cass	167	0	167
Chippewa	139	0	139
Chisago	751	0	751
Clay	523	0	523
Clearwater	0	0	0
Cook	215	0	215
Cottonwood	95	0	95
Crow Wing	1,199	0	1,199
Dakota	658	1,252	1,910
Dodge	249	317	566
Faribault	82	54	136
Fillmore	443	0	443
Freeborn	1,726	0	1,726
Goodhue	1,454	0	1,454
Grant	112	0	112
Hennepin	22,361	0	22,361
Houston	138	0	138
Hubbard	456	0	456
Isanti	293	0	293
Itasca	991	0	991
Jackson	115	0	115
Kanabec	73	0	73
Kandiyohi	293	0	293
Kittson	140	0	140
Koochiching	96	0	96
Lac qui Parle	38	0	38
Lake	585	0	585
Lake of The Woods	500	0	500
Le Sueur	0	422	422
Lincoln	69	0	69
Lyon	262	0	262
Mahnomen	30	0	30
Marshall	117	0	117
Martin	908	280	1,188
McLeod	74	0	74
Meeker	198	0	198
Mille Lacs	108	0	108
Morrison	488	0	488
Mower	359	0	359



**County Survey Responses**  
**Glass collected for recycling (tons)**

County	Food & beverage	Other glass	Total glass
Murray	124	12	136
Nicollet	142	0	142
Nobles	205	0	205
Norman	68	0	68
Olmsted	2,000	946	2,946
Otter Tail	628	0	628
Pennington	56	0	56
Pine	120	0	120
Pipestone	147	0	147
Polk	277	0	277
Pope/Douglas	1,349	0	1,349
Ramsey	8,135	0	8,135
Red Lake	118	0	118
Redwood	307	0	307
Renville	392	0	392
Rice	954	3,876	4,830
Rock	82	0	82
Roseau	187	3,650	3,837
Scott	2,051	0	2,051
Sherburne	1,168	221	1,389
Sibley	0	245	245
St. Louis - partial	1,423	0	1,423
Stearns	2,768	985	3,752
Steele	514	31,938	32,452
Stevens	126	0	126
Swift	261	0	261
Todd	123	0	123
Traverse	31	0	31
Wabasha	455	0	455
Wadena	140	0	140
Waseca	132	0	132
Washington	2,926	0	2,926
Watonwan	106	0	106
Wilkin	60	0	60
Winona	955	0	955
WLSSD	4,215	0	4,215
Wright	1,224	0	1,224
Yellow Medicine	221	0	221
<hr/>			
Metro Area	41,401	3,007	44,409
Greater Minn.	(41,401)	43,302	81,983
Minnesota		46,309	126,391

**County Survey Responses:**  
**Plastic collected for recycling (tons)**

County	Film plastic	HDPE	Mixed plastic	Other plastic	PET	Polystyrene	Total Plastic
Aitkin	0	0	64	0	0	0	64
Anoka	44	203	1,225	709	2	3	2,186
Becker	4	0	92	511	0	0	607
Beltrami	0	52	0	0	0	0	52
Benton	28	371	49	96	42	0	587
Big Stone	0	8	0	0	8	0	16
Blue Earth	1,172	20	315	99	461	51	2,119
Brown	0	0	581	0	0	0	581
Carlton	23	0	357	0	0	0	380
Carver	54	0	892	0	0	26	971
Cass	0	16	27	0	37	0	80
Chippewa	2	3	72	0	0	7	83
Chisago	2	0	345	0	0	0	347
Clay	0	0	171	0	0	0	171
Clearwater	0	0	0	0	0	0	0
Cook	0	0	47	0	0	0	47
Cottonwood	0	5	48	0	0	0	53
Crow Wing	0	0	319	70	0	0	389
Dakota	38	0	3,028	0	13	0	3,080
Dodge	0	0	89	148	0	0	237
Faribault	2	5	226	0	0	0	233
Fillmore	0	57	0	0	43	0	100
Freeborn	0	0	767	0	0	0	767
Goodhue	0	79	50	0	68	0	197
Grant	0	0	32	0	0	0	32
Hennepin	0	82	13,625	0	310	0	14,017
Houston	0	0	137	1	0	0	138
Hubbard	0	0	128	0	0	0	128
Isanti	16	0	118	0	0	0	134
Itasca	10	60	294	0	170	0	534
Jackson	0	0	42	0	0	0	42
Kanabec	0	0	22	0	0	0	22
Kandiyohi	33	81	0	0	90	0	204
Kittson	0	1	19	0	3	0	23
Koochiching	0	10	0	0	9	0	20
Lac qui Parle	0	0	0	1	56	0	57
Lake	0	0	62	0	0	0	62
Lake of The Woods	0	0	0	0	5	0	5
Le Sueur	0	0	77	11	0	0	87
Lincoln	0	4	3	0	6	0	13
Lyon	0	0	134	0	0	0	134
Mahnomen	0	0	6	0	0	0	6
Marshall	0	3	26	0	8	0	37
Martin	7	22	835	0	0	0	864
McLeod	2,240	0	30	4	0	174	2,448
Meeker	0	0	90	0	0	0	90
Mille Lacs	0	0	48	0	0	0	48
Morrison	12	0	240	0	0	0	253

**County Survey Responses:**  
**Plastic collected for recycling (tons)**

County	Film plastic	HDPE	Mixed plastic	Other plastic	PET	Polystyrene	Total Plastic
Mower	32	86	0	0	62	0	179
Murray	0	47	69	3	0	0	120
Nicollet	0	73	224	126	97	0	521
Nobles	0	185	0	1,040	122	0	1,347
Norman	0	0	0	0	0	0	0
Olmsted	1	0	928	17	0	6	952
Otter Tail	0	119	0	61	110	0	290
Pennington	0	0	13	0	0	0	13
Pine	0	0	24	0	0	0	24
Pipestone	0	0	78	269	0	0	347
Polk	20	0	73	0	0	0	93
Pope/Douglas	46	0	329	13	0	0	388
Ramsey	102	512	658	0	840	0	2,112
Red Lake	0	0	13	0	1	0	13
Redwood	209	81	96	0	42	0	427
Renville	0	0	90	0	0	0	90
Rice	49	0	760	0	0	0	809
Rock	0	0	65	0	0	0	65
Roseau	383	0	67	123	0	0	573
Scott	52	27	513	390	116	0	1,098
Sherburne	0	0	424	104	0	0	529
Sibley	0	0	30	0	0	0	30
St. Louis - partial	0	126	2	0	128	0	256
Stearns	115	1,132	186	404	181	30	2,049
Steele	49	0	103	147	0	0	300
Stevens	0	25	0	0	20	0	45
Swift	0	59	0	0	66	0	125
Todd	0	0	14	0	0	0	14
Traverse	0	0	17	0	0	0	17
Wabasha	0	0	323	0	0	0	323
Wadena	0	0	125	0	0	0	125
Waseca	0	22	20	91	43	0	176
Washington	105	0	1,082	0	12	0	1,199
Watonwan	0	0	23	0	0	0	23
Wilkin	0	0	15	0	0	0	15
Winona	0	498	0	0	0	0	498
WLSSD	119	1,040	2,439	41	284	3	3,926
Wright	0	0	305	0	0	0	305
Yellow Medicine	0	0	38	0	0	0	38
Metro Area	395	824	21,023	1,099	1,293	29	24,663
Greater Minn.	4,574	4,290	12,856	3,382	2,162	270	27,534
Minnesota	4,969	5,115	33,879	4,480	3,455	299	52,197

**County Survey Responses**  
**Organics collected for recycling (tons) - Part 1**

County	Food to livestock	Food to people	Source- separated organics	Total organics
Aitkin	0	0	0	0
Anoka	2,726	56	0	2,782
Becker	0	0	0	0
Beltrami	0	0	0	0
Benton	27	0	0	27
Big Stone	0	0	71	71
Blue Earth	0	0	0	0
Brown	1,929	0	0	1,929
Carlton	0	0	0	0
Carver	9,351	0	326	9,677
Cass	0	0	0	0
Chippewa	0	0	0	0
Chisago	16	0	0	16
Clay	5,993	80	0	6,073
Clearwater	0	0	0	0
Cook	0	0	0	0
Cottonwood	0	0	0	0
Crow Wing	570	0	0	570
Dakota	15,746	0	60	15,806
Dodge	0	0	71	71
Faribault	0	0	0	0
Fillmore	0	0	0	0
Freeborn	0	0	0	0
Goodhue	350	0	0	350
Grant	0	0	0	0
Hennepin	17,117	0	1,669	18,786
Houston	0	0	0	0
Hubbard	62	0	0	62
Isanti	464	0	0	464
Itasca	0	0	0	0
Jackson	31	0	0	31
Kanabec	0	0	0	0
Kandiyohi	156	0	0	156
Kittson	17	0	0	17
Koochiching	0	0	0	0
Lac qui Parle	648	0	0	648
Lake	0	0	0	0
Lake of The Woods	0	0	0	0
Le Sueur	4,450	0	0	4,450
Lincoln	0	8	0	8
Lyon	0	0	0	0
Mahnomen	0	0	0	0
Marshall	0	0	0	0
Martin	0	0	0	0
McLeod	0	0	2,046	2,046
Meeker	0	0	0	0
Mille Lacs	0	0	0	0

**County Survey Responses**  
**Organics collected for recycling (tons) - Part 1**

County	Food to livestock	Food to people	Source- separated organics	Total organics
Morrison	0	0	0	0
Mower	0	0	0	0
Murray	0	5	0	5
Nicollet	171	0	0	171
Nobles	119	24	0	143
Norman	0	0	0	0
Olmsted	5,631	0	0	5,631
Otter Tail	0	0	0	0
Pennington	0	0	0	0
Pine	670	0	0	670
Pipestone	0	0	0	0
Polk	2,517	0	0	2,517
Pope/Douglas	2	0	0	2
Ramsey	28,361	430	18	28,809
Red Lake	0	0	0	0
Redwood	2,200	550	0	2,750
Renville	650	240	0	890
Rice	28,720	0	183	28,903
Rock	0	0	0	0
Roseau	0	0	0	0
Scott	469	0	474	943
Sherburne	491	0	11	503
Sibley	4,275	0	0	4,275
St. Louis - partial	0	0	0	0
Stearns	830	0	0	830
Steele	0	0	0	0
Stevens	0	0	0	0
Swift	0	0	1,084	1,084
Todd	0	0	0	0
Traverse	0	0	0	0
Wabasha	3,654	0	0	3,654
Wadena	0	0	0	0
Waseca	0	0	0	0
Washington	4,042	133	0	4,175
Watsonwan	0	0	0	0
Wilkin	0	0	0	0
Winona	1,467	0	0	1,467
WLSSD	208	147	1,668	2,022
Wright	0	0	0	0
Yellow Medicine	0	0	0	0
Metro Area	77,812	619	2,547	80,977
Greater Minn.	66,316	1,053	5,134	72,503
Minnesota	144,127	1,672	7,681	153,481

**County Survey Responses**  
**Textiles, other collected for recycling (tons) - Part 2**

County	Carpet	Textiles	Pallets	Unspecified or Other	Mattresses & box springs	Total
Aitkin	0	12	0	0	0	12
Anoka	0	3,016	627	3,114	0	6,758
Becker	0	41	455	0	0	496
Beltrami	0	0	0	0	0	0
Benton	0	0	0	0	0	0
Big Stone	0	7	0	0	0	7
Blue Earth	0	2,103	11,101	0	0	13,204
Brown	0	0	1,470	263	0	1,732
Carlton	0	0	0	0	43	43
Carver	10	121	712	4,774	0	5,617
Cass	0	11	0	3,658	0	3,669
Chippewa	0	0	0	150	0	150
Chisago	0	96	25	0	9	130
Clay	0	262	212	0	3	477
Clearwater	0	15	0	0	0	15
Cook	0	3	0	31	0	33
Cottonwood	0	0	2,400	2	0	2,402
Crow Wing	0	257	0	1	67	324
Dakota	0	3,051	12,734	64,557	0	80,342
Dodge	0	0	26	138	0	164
Faribault	0	13	0	0	0	13
Fillmore	0	11	0	724	0	735
Freeborn	0	2	60	0	0	62
Goodhue	0	7	5	0	0	12
Grant	0	0	0	125	0	125
Hennepin	0	0	46	332,088	29	332,163
Houston	0	26	0	257	0	283
Hubbard	0	188	0	0	0	188
Isanti	0	0	28	0	10	37
Itasca	0	0	0	0	0	0
Jackson	0	76	870	300	0	1,246
Kanabec	0	0	0	704	2	706
Kandiyohi	0	0	0	0	0	0
Kittson	0	0	0	3	0	3
Koochiching	0	0	3	20	0	23
Lac qui Parle	0	20	0	1	0	21
Lake	0	0	0	37	2	39
Lake of The Woods	0	0	0	0	0	0
Le Sueur	0	0	1,050	2	0	1,052
Lincoln	0	58	0	0	0	58
Lyon	0	769	1,872	2,986	0	5,627
Mahnomen	0	0	0	0	0	0
Marshall	0	0	0	0	0	0
Martin	0	4	0	0	0	4
McLeod	0	0	678	6,634	0	7,312
Meeker	0	0	900	306	0	1,206
Mille Lacs	0	0	0	0	8	8
Morrison	0	116	1,092	3	0	1,210

**County Survey Responses**  
**Textiles, other collected for recycling (tons) - Part 2**

County	Carpet	Textiles	Pallets	Unspecified or Other	Mattresses & box springs	Total
Mower	0	112	7,479	0	0	7,591
Murray	0	153	133	0	0	286
Nicollet	0	3	438	1	0	442
Nobles	0	334	1,914	0	0	2,248
Norman	0	0	0	2	0	2
Olmsted	120	544	122	112	0	898
Otter Tail	29	0	0	748	16	793
Pennington	0	0	0	0	0	0
Pine	0	0	0	0	23	23
Pipestone	0	150	1,640	0	0	1,790
Polk	0	0	0	1,782	0	1,782
Pope/Douglas	120	294	31	0	0	445
Ramsey	8	611	10	192,020	0	192,648
Red Lake	0	0	0	0	0	0
Redwood	20	1,010	600	6,300	0	7,930
Renville	0	45	44	0	0	89
Rice	0	227	2,341	0	0	2,568
Rock	0	0	498	0	0	498
Roseau	0	0	1,194	0	0	1,194
Scott	0	227	4,500	0	0	4,726
Sherburne	0	0	193	0	4	197
Sibley	2	0	25	0	0	27
St. Louis - partial	0	0	0	0	155	155
Stearns	0	0	2,373	0	0	2,373
Steele	0	202	3,915	21	0	4,138
Stevens	0	0	0	0	0	0
Swift	0	0	0	0	0	0
Todd	0	1	0	0	0	1
Traverse	0	0	0	0	0	0
Wabasha	0	3	32	5	0	41
Wadena	0	0	0	0	0	0
Waseca	0	126	0	11	0	137
Washington	0	10	17	3,742	0	3,768
Watonwan	0	0	0	0	0	0
Wilkin	0	0	0	117	0	117
Winona	0	0	2,220	0	0	2,220
WLSSD	10	1,548	2,465	190	0	4,213
Wright	0	0	0	0	0	0
Yellow Medicine	0	33	500	178	0	711
						0
Metro Area	18	7,036	18,645	600,294	29	626,022
Greater Minn.	301	8,882	50,404	25,810	340	85,736
Minnesota	319	15,918	69,048	626,104	369	711,758

**County Survey Responses**  
**Problem materials (banned) collected for recycling (tons)**

County	Antifreeze	Electronics	Fluorescent & HID lamps	HHW	Latex paint	Major appliances	Used oil	Used oil filters	Vehicle batteries	Waste tires	Total problem mats
Aitkin	2	47	4	6	3	121	92	8	99	181	562
Anoka	75	1,099	27	4	91	1,997	266	155	2,042	666	6,422
Becker	1	43	3	1	18	199	26	15	198	65	568
Beltrami	3	127	4	7	7	304	35	20	269	127	904
Benton	0	20	1	3	7	239	32	19	289	80	689
Big Stone	0	26	2	2	1	39	19	5	34	18	145
Blue Earth	47	165	37	9	15	670	289	130	1,225	2,000	4,586
Brown	0	81	2	8	15	158	21	12	162	53	511
Carlton	5	55	2	1	7	205	27	16	209	68	596
Carver	4	377	4	61	63	538	72	42	550	179	1,890
Cass	2	45	6	10	8	247	28	13	176	388	923
Chippewa	0	13	3	0	0	76	10	6	78	470	655
Chisago	4	152	3	45	64	437	45	24	310	103	1,186
Clay	24	80	11	7	15	462	254	26	343	368	1,589
Clearwater	0	25	5	0	4	49	7	4	52	89	235
Cook	0	0	0	0	0	33	10	3	33	11	90
Cottonwood	0	50	1	1	2	93	9	5	71	23	255
Crow Wing	12	166	25	1	18	588	49	35	410	220	1,524
Dakota	121	6,454	100	101	248	2,391	319	188	2,446	797	13,164
Dodge	0	44	1	4	4	121	16	10	124	40	365
Faribault	2	47	1	2	1	96	13	8	99	35	304
Fillmore	2	36	3	0	25	127	17	10	129	42	391
Freeborn	1	40	1	9	8	189	25	15	193	63	543
Goodhue	0	104	6	0	0	277	37	22	283	92	821
Grant	0	30	1	5	0	36	5	3	37	12	129
Hennepin	34	2,142	29	96	640	7,015	935	546	7,176	2,338	20,952
Houston	0	111	2	3	0	185	16	9	121	96	543
Hubbard	0	123	9	1	1	208	26	9	116	466	959
Isanti	0	56	1	3	4	234	31	18	240	78	665
Itasca	2	109	4	0	0	1,100	36	21	272	89	1,633
Jackson	0	73	2	1	1	66	9	5	68	22	247
Kanabec	2	4	0	0	0	98	47	8	101	72	332
Kandiyohi	0	0	0	0	35	251	33	20	256	84	679
Kittson	0	5	1	0	2	28	4	2	29	9	79
Koochiching	0	29	2	2	0	81	11	6	83	27	241
Lac qui Parle	1	26	1	0	17	44	41	3	46	15	194
Lake	2	35	5	0	0	240	78	8	67	22	457
Lake of The Woods	0	0	2	3	2	26	3	3	26	42	107
Le Sueur	1	25	5	0	6	178	43	13	172	90	533
Lincoln	0	17	1	3	0	36	22	3	37	40	158
Lyon	0	47	0	0	0	150	20	12	154	50	432
Mahnomen	0	5	0	0	1	31	4	2	31	10	84
Marshall	1	4	1	3	2	60	8	5	61	40	184
Martin	3	62	20	3	1	145	18	12	155	56	475
McLeod	9	25	5	2,020	28	224	30	17	229	75	2,660
Meeker	0	60	18	16	5	140	19	11	143	47	459
Mille Lacs	0	30	0	3	6	158	21	12	162	53	446
Morrison	5	106	8	0	10	206	220	15	202	383	1,156
Mower	3	16	1	0	15	231	31	18	236	77	627



**County Survey Responses**  
**Problem materials (banned) collected for recycling (tons)**

County	Antifreeze	Electronics	Fluorescent & HID lamps	HHW	Latex paint	Major appliances	Used oil	Used oil filters	Vehicle batteries	Waste tires	Total problem mats
Murray	0	15	0	1	1	52	7	4	53	17	151
Nicollet	1	56	7	8	0	210	33	15	218	73	621
Nobles	46	57	14	6	3	123	364	16	126	270	1,025
Norman	0	19	2	0	1	41	5	3	42	14	128
Olmsted	26	314	31	40	19	848	113	66	867	283	2,608
Otter Tail	1	74	19	31	21	364	47	27	372	121	1,078
Pennington	0	12	2	2	3	82	15	6	84	27	233
Pine	1	148	0	10	0	521	23	13	174	577	1,466
Pipestone	0	35	3	4	0	56	7	4	57	19	186
Polk	0	71	1	5	7	186	25	15	190	143	642
Pope/Douglas	20	451	18	7	14	283	38	22	294	94	1,242
Ramsey	13	273	22	223	267	3,104	414	242	3,176	1,035	8,769
Red Lake	0	4	1	1	1	25	3	2	25	8	69
Redwood	58	498	31	13	8	217	580	29	612	1,096	3,141
Renville	0	56	3	0	5	188	15	8	105	162	542
Rice	76	95	17	45	37	388	50	29	413	126	1,277
Rock	0	45	1	1	2	57	8	4	58	511	687
Roseau	4	37	10	3	2	181	20	8	111	124	500
Scott	148	1,075	33	41	87	771	500	78	789	305	3,826
Sherburne	1	106	7	0	93	527	70	41	539	176	1,562
Sibley	2	25	3	15	9	231	12	7	94	82	480
St. Louis - partial	279	227	7	79	0	3,740	461	38	494	806	6,131
Stearns	11	357	2	0	0	882	205	69	902	743	3,171
Steele	0	92	8	6	11	220	29	17	225	73	683
Stevens	0	60	2	7	0	58	8	5	60	19	219
Swift	0	19	3	0	0	68	9	5	70	23	197
Todd	0	25	1	0	1	146	19	11	149	53	405
Traverse	0	0	1	1	1	23	3	2	23	8	61
Wabasha	0	35	1	7	0	134	18	10	137	45	388
Wadena	0	0	0	0	0	81	11	6	83	84	266
Waseca	0	46	2	3	0	117	60	9	120	91	448
Washington	12	474	13	0	186	1,406	187	109	1,438	469	4,294
Watsonwan	0	0	0	0	4	69	9	5	70	23	179
Wilkin	0	16	2	1	1	73	8	7	45	17	170
Winona	0	158	6	24	20	301	40	23	308	217	1,098
WLSSD	49	1,041	24	18	69	986	93	143	709	231	3,363
Wright	1	96	3	30	15	716	95	56	732	239	1,984
Yellow											
Medicine	0	2	0	3	0	63	8	5	64	21	166
<hr/>											
Metro Area	406	11,894	228	527	1,581	17,221	2,693	1,361	17,618	5,789	59,317
Greater MN	711	6,654	439	2,554	703	21,140	4,349	1,374	16,460	13,105	67,490
Minnesota	1,117	18,548	668	3,081	2,284	38,361	7,043	2,734	34,077	18,894	126,807

**County Survey Responses**  
**Wastes generated (tons)**

County	Estimated tons of MSW not collected	Problem mats not collected for recycling	Tons to MSW disposal/processing facilities	Tons collected for recycling	Total tons generated
Aitkin	275	174	8,386	2,620	11,455
Anoka	0	8,392	179,490	138,300	326,182
Becker	252	810	17,788	10,964	29,813
Beltrami	0	1,026	24,741	6,320	32,087
Benton	2,686	985	21,120	59,634	84,425
Big Stone	840	110	2,389	1,539	4,877
Blue Earth	1,279	677	31,499	66,593	100,047
Brown	1,480	657	12,678	17,852	32,667
Carlton	685	861	12,602	6,191	20,338
Carver	294	2,260	45,485	38,873	86,912
Cass	0	445	16,293	12,364	29,102
Chippewa	1,679	214	7,691	2,894	12,477
Chisago	420	1,187	22,545	8,648	32,800
Clay	833	860	26,274	21,589	49,556
Clearwater	126	140	3,809	1,233	5,308
Cook	29	131	5,006	1,338	6,505
Cottonwood	1,006	263	5,890	4,392	11,552
Crow Wing	239	1,336	37,025	39,519	78,119
Dakota	0	10,048	234,357	217,969	462,374
Dodge	893	491	8,527	6,962	16,874
Faribault	2,180	351	7,470	7,263	17,264
Fillmore	3,022	526	6,606	3,043	13,197
Freeborn	315	782	25,140	14,917	41,154
Goodhue	420	1,159	26,247	16,482	44,309
Grant	742	151	2,024	759	3,675
Hennepin	0	29,486	854,215	596,972	1,480,673
Houston	546	406	5,039	2,814	8,805
Hubbard	0	285	14,647	5,173	20,105
Isanti	1,259	985	21,132	11,038	34,415
Itasca	371	1,052	25,183	11,774	38,380
Jackson	942	271	5,216	4,146	10,575
Kanabec	27	336	7,488	2,513	10,365
Kandiyohi	840	1,049	23,150	7,293	32,332
Kittson	84	115	1,590	577	2,366
Koochiching	315	332	7,652	3,137	11,436
Lac qui Parle	1,424	148	3,293	2,432	7,297
Lake	420	190	5,491	2,979	9,080
Lake of The Woods	17	65	2,774	892	3,747
Le Sueur	1,039	642	14,038	11,407	27,126
Lincoln	858	101	1,928	890	3,776
Lyon	812	625	15,139	15,648	32,224
Mahnomen	91	128	1,616	384	2,219
Marshall	315	218	4,911	978	6,422
Martin	2,375	472	9,697	21,572	34,116
McLeod	2,099	940	20,146	16,971	40,156
Meeker	1,007	580	8,721	4,564	14,873
Mille Lacs	1,469	666	13,484	1,386	17,005
Morrison	378	361	10,846	13,187	24,772

**County Survey Responses**  
**Wastes generated (tons)**

County	Estimated tons of MSW not collected	Problem mats not collected for recycling	Tons to MSW disposal/processing facilities	Tons collected for recycling	Total tons generated
Mower	1,238	955	25,381	22,581	50,155
Murray	798	213	3,535	2,264	6,810
Nicollet	1,066	759	14,926	15,347	32,098
Nobles	944	38	9,888	15,015	25,886
Norman	23	171	3,292	1,050	4,536
Olmsted	2,373	3,564	88,814	61,419	156,171
Otter Tail	949	1,379	31,856	12,531	46,714
Pennington	1,637	342	10,039	1,644	13,662
Pine	1,679	445	18,166	4,152	24,442
Pipestone	1,196	236	3,951	4,098	9,481
Polk	183	695	16,753	10,698	28,329
Pope/Douglas	483	1,187	27,619	12,815	42,103
Ramsey	0	13,049	360,880	297,822	671,751
Red Lake	8	104	1,546	642	2,300
Redwood	1,211	0	7,450	22,376	31,037
Renville	2,057	250	8,150	4,232	14,689
Rice	2,560	1,549	44,032	55,779	103,921
Rock	462	163	4,315	2,633	7,573
Roseau	682	273	9,459	9,237	19,651
Scott	33	2,788	72,533	63,174	138,528
Sherburne	210	2,217	40,961	32,874	76,261
Sibley	462	305	6,183	6,325	13,273
St. Louis - partial	333	864	55,869	61,440	118,506
Stearns	1,259	3,171	72,614	97,523	174,567
Steele	1,007	926	29,841	46,513	78,287
Stevens	401	244	5,797	1,599	8,041
Swift	1,062	284	4,640	3,328	9,314
Todd	840	599	10,907	18,549	30,895
Traverse	504	93	1,199	828	2,624
Wabasha	614	557	8,884	13,768	23,823
Wadena	378	284	8,172	6,119	14,952
Waseca	78	393	8,475	36,160	45,106
Washington	0	5,910	96,598	88,934	191,442
Watonwan	986	283	9,009	2,087	12,365
Wilkin	840	145	1,501	1,082	3,568
Winona	1,217	1,150	28,365	30,905	61,637
WLSSD	2,796	2,732	62,178	56,747	124,453
Wright	1,427	3,010	53,985	16,422	74,844
Yellow Medicine	1,049	257	4,261	2,256	7,823
<hr/>					
Metro Area	327	71,933	1,843,558	1,442,044	3,357,862
Greater Minn.	71,096	53,143	1,296,940	1,147,910	2,569,089
Minnesota	71,423	125,075	3,140,499	2,589,954	5,926,951

**County Survey Responses**  
**Recycling rate**

County	Tons collected for recycling	Total MSW generated	Percent of MSW collected for recycling	Source reduction credit	Yard waste credit	Recycling rate with credits
Aitkin	2,620	11,455	22.9%	3%	5%	30.9%
Anoka	138,300	326,182	42.4%	3%	5%	50.4%
Becker	10,964	29,813	36.8%	3%	5%	44.8%
Beltrami	6,320	32,087	19.7%	0%	5%	24.7%
Benton	59,634	84,425	70.6%	3%	5%	78.6%
Big Stone	1,539	4,877	31.6%	3%	3%	37.6%
Blue Earth	66,593	100,047	66.6%	3%	5%	74.6%
Brown	17,852	32,667	54.6%	2%	0%	56.6%
Carlton	6,191	20,338	30.4%	3%	5%	38.4%
Carver	38,873	86,912	44.7%	3%	5%	52.7%
Cass	12,364	29,102	42.5%	1%	5%	48.5%
Chippewa	2,894	12,477	23.2%	1%	5%	29.2%
Chisago	8,648	32,800	26.4%	3%	5%	34.4%
Clay	21,589	49,556	43.6%	3%	5%	51.6%
Clearwater	1,233	5,308	23.2%	3%	0%	26.2%
Cook	1,338	6,505	20.6%	3%	5%	28.6%
Cottonwood	4,392	11,552	38.0%	2%	5%	45.0%
Crow Wing	39,519	78,119	50.6%	8%	5%	63.5%
Dakota	217,969	462,374	47.1%	3%	5%	55.1%
Dodge	6,962	16,874	41.3%	3%	5%	49.3%
Faribault	7,263	17,264	42.1%	3%	5%	50.1%
Fillmore	3,043	13,197	23.1%	3%	5%	31.1%
Freeborn	14,917	41,154	36.2%	3%	5%	44.2%
Goodhue	16,482	44,309	37.2%	1%	5%	43.2%
Grant	759	3,675	20.6%	0%	5%	25.6%
Hennepin	596,972	1,480,673	40.3%	3%	5%	48.3%
Houston	2,814	8,805	32.0%	3%	5%	40.0%
Hubbard	5,173	20,105	25.7%	3%	5%	33.7%
Isanti	11,038	34,415	32.1%	3%	5%	40.1%
Itasca	11,774	38,380	30.7%	3%	5%	38.7%
Jackson	4,146	10,575	39.2%	3%	5%	47.2%
Kanabec	2,513	10,365	24.2%	2%	5%	31.2%
Kandiyohi	7,293	32,332	22.6%	2%	5%	29.6%
Kittson	577	2,366	24.4%	3%	5%	32.4%
Koochiching	3,137	11,436	27.4%	1%	5%	33.4%
Lac qui Parle	2,432	7,297	33.3%	3%	5%	41.3%
Lake	2,979	9,080	32.8%	2%	5%	39.8%
Lake of The Woods	892	3,747	23.8%	1%	5%	29.8%
Le Sueur	11,407	27,126	42.1%	3%	5%	50.1%
Lincoln	890	3,776	23.6%	3%	5%	31.6%
Lyon	15,648	32,224	48.6%	3%	5%	56.6%
Mahnomen	384	2,219	17.3%	3%	5%	25.3%
Marshall	978	6,422	15.2%	2%	5%	22.2%
Martin	21,572	34,116	63.2%	3%	5%	71.2%
McLeod	16,971	40,156	42.3%	3%	5%	50.3%
Meeker	4,564	14,873	30.7%	3%	5%	38.7%
Mille Lacs	1,386	17,005	8.2%	1%	5%	14.2%

**County Survey Responses**  
**Recycling rate**

County	Tons collected for recycling	Total MSW generated	Percent of MSW collected for recycling	Source reduction credit	Yard waste credit	Recycling rate with credits
Morrison	13,187	24,772	53.2%	3%	5%	61.2%
Mower	22,581	50,155	45.0%	3%	5%	53.0%
Murray	2,264	6,810	33.3%	3%	5%	41.3%
Nicollet	15,347	32,098	47.8%	3%	5%	55.8%
Nobles	15,015	25,886	58.0%	3%	5%	66.0%
Norman	1,050	4,536	23.2%	0%	5%	28.2%
Olmsted	61,419	156,171	39.3%	3%	5%	47.3%
Otter Tail	12,531	46,714	26.8%	3%	5%	34.8%
Pennington	1,644	13,662	12.0%	3%	5%	20.0%
Pine	4,152	24,442	17.0%	1%	5%	23.0%
Pipestone	4,098	9,481	43.2%	3%	5%	51.2%
Polk	10,698	28,329	37.8%	3%	5%	45.8%
Pope/Douglas	12,815	42,103	30.4%	3%	5%	38.4%
Ramsey	297,822	671,751	44.3%	3%	5%	52.3%
Red Lake	642	2,300	27.9%	3%	5%	35.9%
Redwood	22,376	31,037	72.1%	3%	5%	80.1%
Renville	4,232	14,689	28.8%	3%	5%	36.8%
Rice	55,779	103,921	53.7%	3%	5%	61.7%
Rock	2,633	7,573	34.8%	3%	5%	42.8%
Roseau	9,237	19,651	47.0%	3%	5%	55.0%
Scott	63,174	138,528	45.6%	3%	5%	53.6%
Sherburne	32,874	76,261	43.1%	3%	5%	51.1%
Sibley	6,325	13,273	47.6%	3%	5%	55.6%
St. Louis - partial	61,440	118,506	51.8%	3%	5%	59.8%
Stearns	97,523	174,567	55.9%	2%	5%	62.9%
Steele	46,513	78,287	59.4%	3%	5%	67.4%
Stevens	1,599	8,041	19.9%	3%	5%	27.9%
Swift	3,328	9,314	35.7%	3%	5%	43.7%
Todd	18,549	30,895	60.0%	3%	5%	68.0%
Traverse	828	2,624	31.6%	2%	5%	38.6%
Wabasha	13,768	23,823	57.8%	3%	5%	65.8%
Wadena	6,119	14,952	40.9%	1%	5%	46.9%
Waseca	36,160	45,106	80.2%	1%	5%	86.2%
Washington	88,934	191,442	46.5%	3%	5%	54.5%
Watsonwan	2,087	12,365	16.9%	0%	0%	16.9%
Wilkin	1,082	3,568	30.3%	3%	5%	38.3%
Winona	30,905	61,637	50.1%	3%	5%	58.1%
WLSSD	56,747	124,453	45.6%	3%	5%	53.6%
Wright	16,422	74,844	21.9%	1%	5%	27.9%
Yellow Medicine	2,256	7,823	28.8%	2%	5%	35.8%
Metro Area	1,442,044	3,357,862	42.95%	3.0%	5.0%	50.9%
Greater Minn.	1,147,910	2,569,089	44.68%	2.5%	4.8%	52.0%
Minnesota	2,589,954	5,926,951	43.70%	2.6%	4.8%	51.1%