



## Report on 2004 SCORE Programs

Minnesota Pollution Control Agency  
520 Lafayette Road North  
Saint Paul, MN 55155-4194  
651-296-6300 or 800-657-3864 toll free  
[www.pca.state.mn.us](http://www.pca.state.mn.us)

## Authors and Contributors

Principal Author/Data Analysis: Mark Rust

Ann Bernstein

David Fawcett

Jerome Davis

## Editing and Graphics

Scott Andre

Theresa Gaffey

Glenn Krocheski-Meyer

*The total cost of preparing the Report on 2004 SCORE Programs was \$10,000, including staff time, writing, editing, and printing.*

*The MPCA is reducing printing and mailing costs by using the Internet to distribute reports and information to a wider audience. For additional information on recycling, waste prevention, and waste management, check out the SCORE web site: [www.moea.state.mn.us/score/](http://www.moea.state.mn.us/score/)*

*This report was printed on recycled paper manufactured without the use of elemental chlorine (cover: 30% post-consumer; body: 100% post-consumer).*

# Table of Contents

<b>Introduction .....</b>	<b>1</b>
<i>The SCORE Program .....</i>	<i>1</i>
<i>The SCORE Report .....</i>	<i>1</i>
<b>MSW Generation in Minnesota .....</b>	<b>1</b>
<i>Totals and trends .....</i>	<i>2</i>
<i>Per-capita MSW generation .....</i>	<i>3</i>
<b>Recycling and Waste Reduction .....</b>	<b>3</b>
<i>Commercial and residential recycling .....</i>	<i>4</i>
<i>Benefits of recycling .....</i>	<i>4</i>
<i>Serving local markets .....</i>	<i>4</i>
<i>Waste and toxicity reduction .....</i>	<i>5</i>
<b>MSW Processing and Disposal .....</b>	<b>6</b>
<i>Trends in waste processing and disposal .....</i>	<i>6</i>
<b>Funding of SCORE Programs .....</b>	<b>9</b>
<i>State funding: SCORE block grants .....</i>	<i>9</i>
<i>County funding .....</i>	<i>9</i>
<i>Challenges .....</i>	<i>10</i>
 <b>Figures</b>	
<i>Figure 1: Minnesota MSW generation .....</i>	<i>2</i>
<i>Figure 2: Minnesota's recycling progress .....</i>	<i>3</i>
<i>Figure 3: MSW disposal and processing in Minnesota, 2004 .....</i>	<i>6</i>
<i>Figure 4: Trends in Minnesota waste management .....</i>	<i>7</i>
<i>Figure 5: SCORE expenditures .....</i>	<i>10</i>

# Introduction

How much garbage do we create in Minnesota every year? How much does the average person generate? Where does it end up and how much of it gets recycled? How much do we recycle each year and why do we recycle in the first place? These are all excellent questions and there are many more that come up every time we explore the timeless issue of what do we do with the waste we create.

To help answer these questions, we gather data from all 87 counties in the state. By comparing the most current information about waste generation, recycling, household hazardous waste, landfilling, processing, waste reduction, and funding to past years' data, we can see emerging trends that help us improve our programs, policies, and outreach efforts. By analyzing the data, we can also quantify recycling's impact on our environment (the amount of resources conserved) and on our economy (the businesses and jobs supported by Minnesota's value-added recycling manufacturing industry, as well as the resulting direct and indirect tax revenues).

The *Report on 2004 SCORE Programs* uses data collected during calendar year (CY) 2004, the most current data set available; CY2005 data are not due to the MPCA until March 31, 2006. These 2004 data were further used to develop the *2005 Solid Waste Policy Report*, which makes policy and program recommendations to the Legislature every other year: [www.moea.state.mn.us/policy/policy2005.cfm](http://www.moea.state.mn.us/policy/policy2005.cfm).

## The SCORE program

Minnesota's statewide recycling efforts began in earnest in 1989, when the Legislature adopted comprehensive legislation based on the recommendations of the *Governor's Select Committee on Recycling and the Environment*. This set of laws, commonly referred to as SCORE, initiated a source of state funding for programs for recycling, as well as waste reduction and the improved management of household hazardous wastes and problem materials. The legislation, SCORE grant dollars, and revenue from counties and local government provide the basis for programs that are long-term and flexible within the scope of waste reduction, recycling, and problem materials management.

## The SCORE Report

Data for this *Report on 2004 SCORE Programs* were collected from Minnesota's 87 counties through the MPCA's annual SCORE survey. The key contributors are the county solid waste staff members who provide the details on local programs for solid waste management and recycling.

The MPCA uses the information from the survey to calculate recycling rates and the cost of managing waste and recycling, as well as identify trends in waste generation and disposal. This is what drives our planning efforts, policy direction, and assistance efforts.

Although SCORE data were first collected in fiscal year 1989/1990, the MPCA uses calendar year 1991 as a baseline for trend analysis in the SCORE report. These data are considered to be the most accurate and comparable with the most recent SCORE surveys.

# MSW Generation in Minnesota

Though Minnesota has generally shown a steady growth in municipal solid waste (MSW) since 1989, reflected in both the total amount of MSW generated and in the per-capita figures, the rate of growth has declined over the past two years.

Mixed MSW is defined by statute as "garbage, refuse, and other solid waste from residential, commercial, industrial, and community activities that the generator of the waste aggregates for collection." It includes

common materials found in household and commercial garbage such as packaging materials, containers, food discards, and other compostable materials, plastic, paper, etc. Municipal solid waste does *not* include auto hulks, street sweepings, ash, construction debris, mining waste, sludges, tree and agricultural wastes, tires, lead acid batteries, motor and vehicle fluids and filters, and other materials collected, processed, and disposed of as separate waste streams (Minn. Stat. § 115A.03, subd. 21).

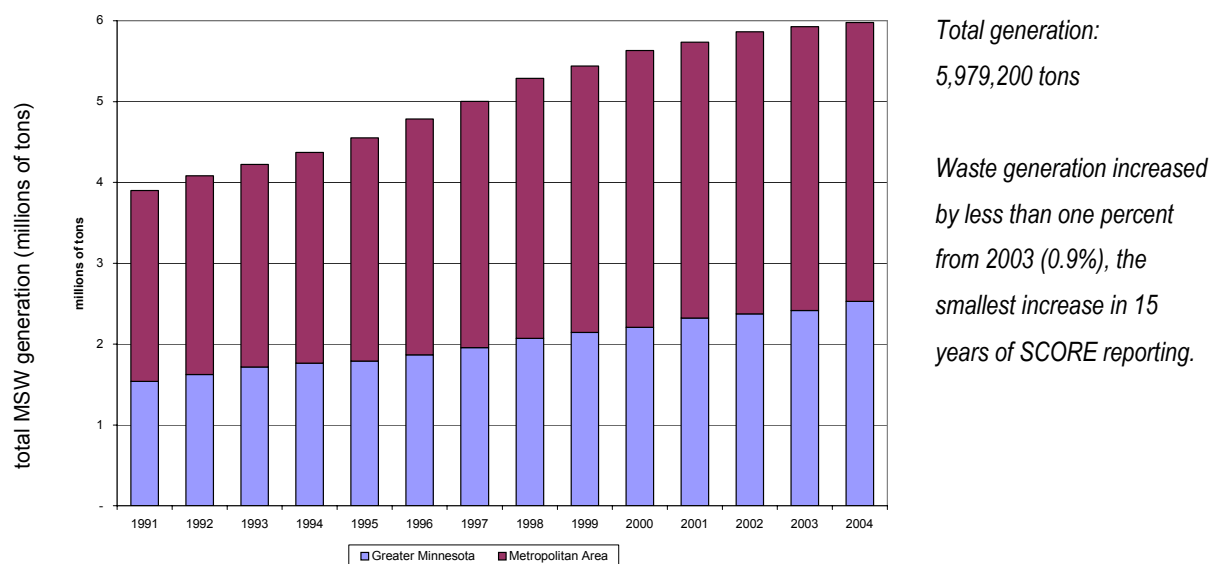
Total generation of the state's municipal solid waste includes wastes recycled, discarded (including tons sent to disposal and resource recovery facilities), and tons disposed of on-site (burn barrels or rural dumps).

## Totals and trends

Minnesota MSW generation totaled nearly 6 million tons in 2004. Statewide, this represents an increase just shy of one percent over the previous year. Since 1991, MSW generation has grown on average by 3.4 percent per year. Over the past two years, however, total MSW generation has only grown by only one percent annually—the lowest rates of growth recorded since records have been kept (1989). The most significant growth occurred in the mid-1990s (4.4 percent per year from 1993-1998), decreasing to an average of 2.1 percent over the past six years. We attribute these fluctuations primarily to the economy, which tends to mirror waste generation trends. For more information on this correlation, see the *2005 Solid Waste Policy Report*: [www.moea.state.mn.us/policy/policy2005.cfm](http://www.moea.state.mn.us/policy/policy2005.cfm).

With 46 percent of Minnesota's population, the seven-county Metropolitan Area generates 58 percent of the state's waste. The 80 counties of Greater Minnesota report the balance, 42 percent of the waste.

**Figure 1: Minnesota MSW generation**



	1991	1998	1999	2000	2001	2002	2003	2004	Changes 2003-04
Greater Minnesota	1.54	2.07	2.14	2.21	2.32	2.37	2.41	2.53	4.8%
Metropolitan Area	2.37	3.22	3.30	3.42	3.42	3.49	3.51	3.45	(1.7%)
Minnesota	3.90	5.29	5.44	5.63	5.74	5.86	5.92	5.98	0.9%

Figures in millions of tons. Decreases indicated by parentheses (x%).

## Per-capita MSW generation

Per-capita MSW generation is a preferable measure to overall MSW generation when trying to ascertain trends involving individual consumption and waste generation. In 2003, the per-capita rate was 1.165 tons/person/-year; showing a very slight 0.03 percent decline from 2002. This decline was repeated in 2004, with a per-capita rate of 1.162 tons, a year-on-year decrease of 0.2 percent. These decreases may seem minimal, but they are significant when put into context with the historical trend—over 15 years of SCORE data collection, per-capita MSW growth has increased by an average of 2.2 percent annually, and had never shown a decline until 2003 and 2004. We will be watching to determine how much of an impact an improving economy has on per-capita MSW generation, and what role ongoing educational programs and initiatives for waste reduction play in reducing waste generation rates for individuals and businesses.

## Recycling and Waste Reduction

The heart of SCORE is Minnesota's recycling efforts, and our city and county programs are among the nation's most successful. In 2004, Minnesota's recycling rate (including credits for yard waste recycling and waste reduction efforts) increased to 48 percent, an increase of 1.5 percentage points from 2003. The statewide recycling rate has increased by 12 percentage points since 1991. While the latest edition of *BioCycle* magazine's annual survey won't be published until spring 2006, their last survey lists Minnesota among the top ten states in the nation, and the best among surrounding states.

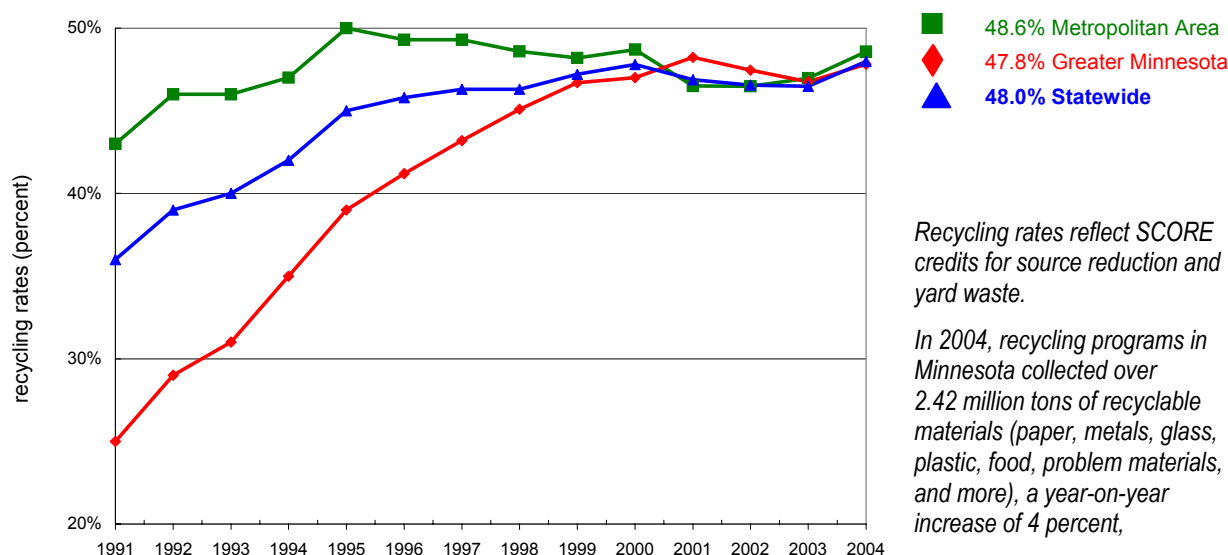
The state's base recycling rate is nearly 41 percent—the highest rate since SCORE began in 1989. (*Base recycling rate* is the actual percentage of materials recycled, not including the additional SCORE credits for source reduction and yard wastes.)

### BioCycle's 2003 recycling rates

Minnesota	45.6%
Iowa	41.7%
Wisconsin	24.6%
North Dakota	9.4%
South Dakota	3.0%

source: "The State of Garbage in America,"  
*BioCycle*, January 2004

**Figure 2: Minnesota's recycling progress**



In 2004, recycling programs in Minnesota collected over 2.42 million tons of recyclable materials (paper, metals, glass, plastic, food, problem materials, and more), a year-on-year increase of 4 percent, nearly 100,000 tons. Since 1991, the tons of materials collected for recycling in Minnesota have more than doubled, growing by 103 percent.

While this growth reflects the significant state, local, and industry investment in our recycling system, as well as strong material markets, evidence suggests much more could be done to recover millions of tons of recyclable and organic material that are still discarded as waste each year. In fact, nearly 75 percent of all waste disposed could be either recycled or composted. The *2005 Solid Waste Policy Report* discusses this issue in greater detail and provides recommendations for meeting the challenge of recycling and processing a greater percentage of our waste.

## Commercial and residential recycling

The breakout of collection and processing of recyclables by sector is relatively unchanged: 73 percent commercial and 27 percent residential. The MPCA has identified additional tons of recyclables that could be recovered from both sectors and is working with partners on projects designed to reinvigorate residential recycling participation and boost commercial recovery. (See the *2005 Solid Waste Policy Report* for more information.)

## Benefits of recycling

Recycling is important in Minnesota—both environmentally and economically.

**Environmental benefits.** Recycling conserves natural resources and reduces air and water pollution. In 2004, recycling in Minnesota conserved nearly 700,000 tons of natural resources, including coal, iron ore, limestone, etc. Recycling reduced greenhouse gas emissions by 1.6 million tons; if that waste had been landfilled, the reduction would have been just 92,000 tons. Waterborne wastes were reduced by 6,700 tons. (Figures developed using the National Recycling Coalition’s “environmental benefits calculator,” a tool to quantify and illustrate the impact of recycling.)

**Economic benefits.** Recycling industries make a substantial contribution to the state’s economy. Minnesota’s recycling manufacturers contribute an estimated \$2.98 billion to the state’s economy, supporting nearly 9,000 direct jobs and nearly 20,000 jobs in total. Further information is available in the Minnesota Office of Environmental Assistance’s *2004 Biennial Report to the Legislature*: [www.moea.state.mn.us/publications/biennial2005.pdf](http://www.moea.state.mn.us/publications/biennial2005.pdf).

## Serving local markets

Minnesota has developed strong local markets for core recycled materials such as plastic, newspaper, cardboard, glass, and steel. While many states do not have a complete array of available markets, Minnesota has become a net importer of recycled materials and has some of the most well-rounded markets in the nation. In order to support our state economy and keep our recycling programs strong, we must support our local recycling manufacturers.

For example, Master Mark Plastics (Albany, Minn.) employs 100 people and annually uses 40-50 million pounds of HDPE (milk jugs and detergent bottles) to make a plastic composite lumber for decking and landscaping products—and the amount of material they need continues to grow. Rock-Tenn’s St. Paul plant uses 1,000 tons of paper per day; loss of this one company would reduce local market capacity by 45 percent and result in the loss of 500 to 600 jobs.



One important way we can do that is by supplying them with local material, which reduces transportation and labor costs for local markets as well as recycling programs. With narrow profit margins, this can make a big difference in market sustainability in the long run.

## Waste and toxicity reduction

Waste reduction efforts focus attention on the prevention of waste at its source and the reuse of materials before they are recycled or discarded, slowing the rate of overall MSW growth. Removing toxic materials from garbage is an important strategy for minimizing potential harm to human health and the environment.

### Waste reduction

Preventing waste at its source is at the top of the waste management hierarchy because it is the most beneficial waste management strategy, both economically and environmentally. Waste that is prevented does not need to be managed or recycled, which means fewer costs and less pollution from waste transport, recycling, or disposal. Selected MPCA waste reduction efforts include:

- Partnering with Minnesota Waste Wise, a program of the state Chamber of Commerce, to offer assistance to member businesses in developing effective waste reduction and recycling programs and find new markets for waste materials.
- Cooperation with the Department of Natural Resources and others to educate anglers on the risks of lead fishing tackle and identify nontoxic alternatives. In 2004, a series of 30 exchange events brought in almost 900 pounds of lead sinkers and jigs, which were swapped for nonlead versions.
- Continuing the *Reduce Waste: If not you, who?* campaign ([www.reduce.org](http://www.reduce.org)), educating consumers on the importance of waste reduction. Reducing the use of office paper, stopping junk mail, and home composting are important opportunities for reducing the amount of material discarded and recycled in Minnesota.

### Household hazardous waste

Household hazardous wastes (HHW) are materials that are toxic and should be managed separately from the regular waste stream, such as pesticides, paint, household chemicals, and mercury thermometers. Collection programs for HHW are important because they minimize the volume and toxicity of waste and reduce the potential for harm to human health and the environment. All counties in Minnesota have programs for their residents' household hazardous wastes, offering a collection site, periodic HHW collection events, or a contract with other county programs.

All Minnesota counties provide education and information to county residents about safe management of HHW, including collection opportunities. In 2004, over 243,000 households delivered HHW to a permanent facility or one of the 385 special collection events held around the state.

In 2004, state and local government spent more than \$13.25 million on HHW programs, including costs for public education, staff, training, facilities, equipment, and waste management. Between ten to fifty percent of local program costs are offset by state revenue, with the rest paid for with local revenue sources.

Plans are underway to develop a comprehensive online system for collecting data from HHW programs, similar to the annual SCORE survey, to better document HHW management data and trends.

### Minnesota Technical Assistance Program

MPCA's Minnesota Technical Assistance Program (MnTAP) at the University of Minnesota focuses on pollution prevention assistance and expertise from industry specialists to a wide array of manufacturing and service industries. All services designed to help businesses reduce costs by preventing pollution at its source.



Through their efforts in 2004, MnTAP documented reductions of 61.5 million pounds of waste and 5.8 million pounds of wastewater pollution, and conservation of 12.2 million gallons of water. Their pollution prevention activities resulted in a total cost savings of \$2.6 million to businesses.

Materials exchange programs are reuse networks that help businesses and organizations find uses for items that would otherwise be thrown away or recycled, keeping usable materials from becoming waste. Businesses save money by avoiding disposal costs and obtaining materials at little or no cost. MnTAP coordinates the statewide materials exchange network, which totaled 1,500 tons of waste exchanged, saving companies \$1.5 million in avoided purchase and disposal costs.

## MSW Processing and Disposal

In 2004, waste remaining for disposal, after recycling and reduction efforts, totaled nearly 3.6 million tons, a decrease of 1.6 percent from 2003. This includes waste disposed of or processed, as well as estimates for on-site disposal and problem materials not recycled.

In Minnesota, waste is managed through four main methods: source-separated and MSW compost facilities, waste-to-energy and Refuse Derived Fuel (RDF) facilities, landfills, and on-site disposal.

### Trends in waste processing and disposal

Waste management in Minnesota is guided by a hierarchy that prioritizes waste reduction, reuse, recycling at the top, followed by traditional waste disposal options: composting, waste-to-energy, and landfilling.

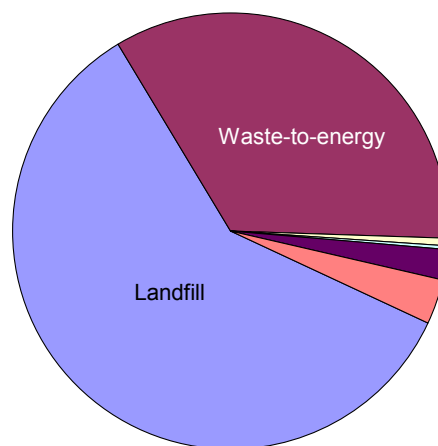
This overview of the second half of the hierarchy presents the latest data and ongoing and emerging trends. In addition, this section addresses burn barrels and on-site disposal of waste, recognizing their unofficial place at the bottom of the solid waste management hierarchy—the least-preferred way to manage waste.

### Composting

The primary way of actively managing organics in the municipal waste stream is through source-separated organics and MSW composting. The key difference between the two methods is that source-separated organics composting is separated by the generator and managed separately, whereas MSW compost is managed in aggregate without pre-sorting. During 2004, source-separated composting had the largest increase, doubling from five to ten thousand tons, while MSW composting was unchanged from the previous year.

**Source-separated organics composting** manages just 0.2 percent of the state's total waste generation, or 0.3 percent of tons disposed and processed. But as the dramatic year-on-year increase of 112% indicates, source-separated programs are growing in importance for the future of integrated solid waste management. The state's 1999 waste composition study found that organic materials comprise over 1/3 of the

**Figure 3: MSW disposal and processing in Minnesota, 2004**



		Change 2003-04
Landfill	59.5%	(1.9%)
Waste-to-energy	34.1%	(0.8%)
Problem Materials not Recycled (est.)	3.4%	2.2%
On-site Disposal (est.)	2.3%	(0.6%)
MSW Compost	0.4%	0.6%
Source-separated Compost	0.3%	112.6%

Percentages of total waste disposal; decreases in parentheses (x%).

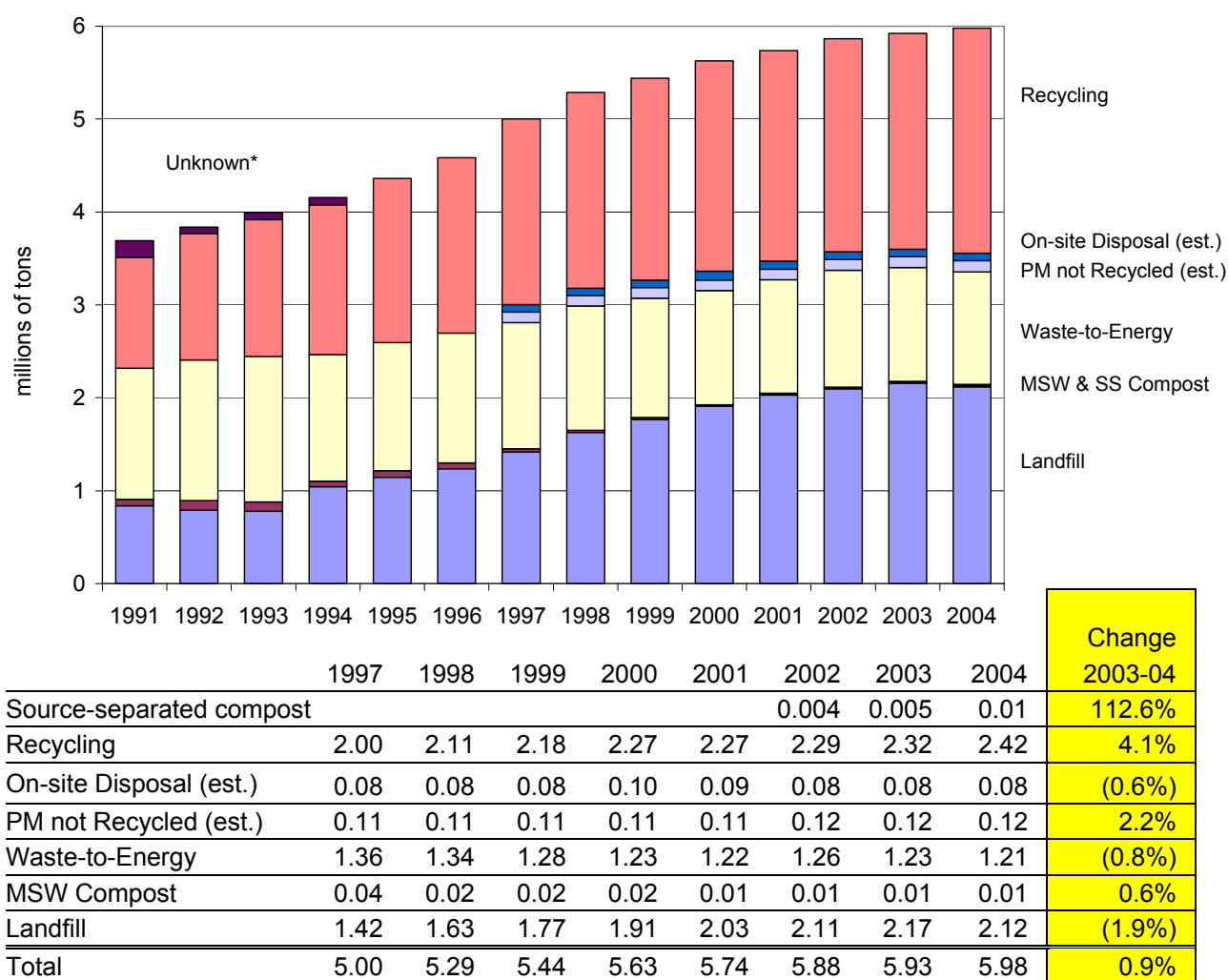
total waste stream, highlighting an important opportunity to recover additional material. There are established source-separated organics projects in the Metro Area, Duluth, and southeast Minnesota, with many other pilot projects underway or being developed.

**MSW composting** comprises a small, but stable portion of Minnesota's integrated waste management system. Three facilities—Swift County Compost, Dodge County Compost, and the Prairieland facility in Martin County—annually manage over 14,000 tons of MSW, providing a vital service in the communities they serve. For more information about the latest on programs, policies, and related recommendations for organics diversion efforts, see part 3 of the *2005 Solid Waste Policy Report*.

## Waste-to-energy

Waste-to-energy declined by 0.8 percent from 2003. Since reaching its highest level in 1993, representing over 57 percent of waste disposed or processed, it has declined to the point where it now represents only 34 percent of all waste disposed or processed in 2004.

**Figure 4: Trends in Minnesota waste management**



Figures in millions of tons. PM = Problem Materials. Decreases indicated by parentheses (x%).

\* Unknown destination waste totals were only reported during the early years of SCORE (1989-1994).

Currently, five plants burn garbage for energy, two plants grind waste into refuse-derived fuel (RDF), and three RDF combustors use RDF for fuel. Over \$500 million has been invested in WTE capacity in Minnesota. After two decades of operation, these facilities are mostly paid for and have been the subject of much refinement. These facilities help our state avoid dependency on landfills and lengthen the life of existing landfills in Minnesota. After accounting for unburnable materials and ash, WTE facilities reduce MSW landfilling needs by at least 80 percent.

Minnesota's WTE facilities process 3,800 tons of municipal waste per day (1.2 million tons per year) for generation of industrial heat and electricity. This represents a substantial amount of energy value, roughly equivalent to burning 2,000 tons per day of western coal. Since the passage of the Waste Management Act, the total energy reclaimed is equivalent to 12 million tons of coal. These facilities produce approximately 100,000 megawatts of electrical energy, enough energy to power 98,000 homes. Waste-to-energy is a vital part of the energy infrastructure in those communities where it is located.

For a more detailed look at waste processing in Minnesota, future directions, and recommended policies and research needs, see the *2005 Solid Waste Policy Report*.

## Landfilling

Since the inception of the Waste Management Act (WMA), the number of land-disposal facilities in Minnesota has dropped dramatically to 22 mixed municipal solid waste (MSW) landfills. Over the past year, the amount of waste sent to landfills decreased by 2 percent (43,000 tons) to 2,118,000 tons. Tons sent to out-of-state landfills increased by 22 percent to over 840,000 tons in 2004, the largest total in 15 years of SCORE reporting. Assuming the status quo, as MSW generation continues to increase, both in- and out-of-state landfill tonnages can be expected to increase.

At present, no large-scale open MSW dumps remain (not including residential on-site dumping). All MSW landfills must have liners, which allow the operators to collect contaminated liquids gathering at the bottom of the landfill, intercepting the liquids from seeping into our water supplies and sending it for treatment instead. All medium- to large-sized landfills collect the flammable gas caused by slow waste decomposition and burn it to reduce air pollution; four of the largest landfills even capture it for electricity production. Experiments are underway to accelerate the decomposition of waste in landfills so that biologically active material will not remain for future generations to handle.

The state has set up an innovative Closed Landfill Program to provide perpetual care and remedial action for 110 old state-permitted landfills that closed before 2000. Those old landfills contain more than 40 million tons of waste deposited as long as six decades ago. To date, the first ten years of the Closed Landfill Program cost the state \$223 million. This program, along with the state's other solid waste efforts, is supported by a Solid Waste Management Tax that encourages waste generators to cut their garbage collection bills through recycling, source-separated composting, and reduction.

## Burn barrels and on-site disposal of waste

Open burning and burial of waste are dated practices that generate significant pollution, posing very real health and environmental risks to the citizens of Minnesota. These activities can be greatly reduced or virtually eliminated through effective education, infrastructure development, incentives, and enforcement efforts.

A 2005 study of burn-barrel use in rural Minnesota found that 45 percent of rural residents still burn their household wastes in backyard burn barrels, fire pits, open spaces, and stoves; rates in some parts of state are as high as 64 percent. This equates to nearly 100,000 tons of waste burned each year in rural Minnesota, with more inclusive estimates running as high as 250,000 tons.

The U.S. EPA considers open burning to be the nation's largest source of uncontrolled airborne dioxin emissions, a major risk to human health. Curbing the generation of dioxin is a key driver for efforts to reduce backyard burning of trash. Based on EPA's emissions research, one burn barrel from an average family of four

will produce as much dioxin as a full-scale municipal waste incinerator burning 200 tons per day. By plugging Minnesota-specific data into the equation we find that Minnesota annually produces 50 to 180 pounds of dioxin from burn barrel use alone—the equivalent dioxin output of *thousands* of full-scale municipal waste burners, each burning 200 tons of waste per day. Other health risks include toxic smoke that contains substances that are known or suspected carcinogens, including heavy metals, volatile organic compounds (VOCs), and dioxin. The smoke is also an irritant that affects people with sensitive respiratory systems (asthma and emphysema), as well as children and the elderly. Backyard burning can also increase the risk of heart disease and cause rashes, nausea, and headaches.

While burning or burying waste on-site has been illegal since 1969, state law still allows farmers to legally engage in these activities unless their county has passed a resolution stating garbage service options exist (Minn. Stat. § 17.135). Over two-thirds of Minnesota counties have not passed such a resolution for a variety of reasons (politically difficult, education barriers, enforcement issues, etc.). Nearly 70 percent of those who burn their household wastes on site are not farmers and are not legally allowed to burn anyway, but determining who is or isn't a farmer can be difficult, and if a person sees neighbors burning they might assume they can as well. Enforcement suffers from a lack of staff, money, and education on both sides of the issue.

Upcoming burn barrel reduction efforts include partnering with the agricultural community, working with DNR's Firewise grant program which will distribute \$100,000 in grant aid for county burn-barrel buy-back programs, and undertaking a statewide reduction campaign in partnership with these and other stakeholders. For more resources and information on state and local burn barrel reduction efforts, including the 2005 study *Open Burning in Rural Minnesota*, go to [www.moea.state.mn.us/reduce/burnbarrel.cfm](http://www.moea.state.mn.us/reduce/burnbarrel.cfm). For more information on the latest policy and program recommendations on burn barrels and on-site disposal, see section 3 of the *2005 Solid Waste Policy Report*.

## Funding of SCORE Programs

Minnesota boasts one of the best recycling rates in the nation due to the level of participation by our citizens and businesses, along with comprehensive recycling programs at the city and county levels—programs funded by local government and state revenues. In 2004, Minnesota counties spent over \$51 million for SCORE-related programs, an increase of over \$2 million, or 4 percent, from 2003. Despite the success of recycling programs in the state, significant advances will likely not be possible without a new approach and additional state funding. State financial support for Waste Management Act activities has been eroding and some counties have begun cutting back their efforts on recycling, waste reduction, public education, and problem materials management (See Figure 5).

### State funding: SCORE block grants

From the inception of SCORE, state solid waste tax revenue has provided an annual funding source for recycling and waste reduction programs. Money from the state is passed on to the county level in the form of annual block grants. The OEA disbursed \$12.5 million in SCORE block grants to eligible counties in 2004.

Within certain guidelines, counties have broad discretion in determining how to spend SCORE block grants and local matching funds, which gives them flexibility to develop programs that best meet local needs. The MPCA monitors the county use of SCORE grants to ensure they are used to fund SCORE-eligible programs: source reduction, recycling, market development, management of problem materials, waste education, litter prevention, technical assistance to ensure proper solid waste management, and waste processing (Minn. Stat. § 115A.55).

### County funding

In the past ten years, overall SCORE expenditures have increased by over 46 percent. These increases have been funded entirely at the local level by counties through use of general revenue, special assessments, and

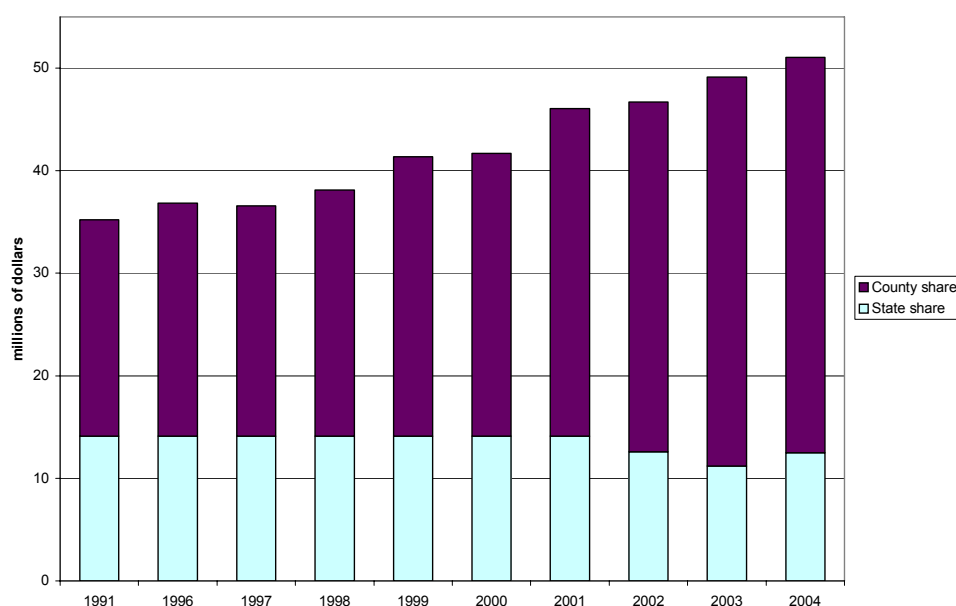
other sources. Figure 5 illustrates the reliance on local dollars to fund reduction, recycling, HHW, and other SCORE programs. This investment is in addition to undocumented dollars spent on waste-related programs by other local units of government such as cities and townships.

Each county is required to match the funding from the Legislature with a local contribution of at least 25 percent. In 2004, counties exceeded this match by 11 times, spending over \$38 million of county funds on SCORE-related activities.

## Challenges

Despite the aforementioned economic value of the recycling industry to the state's economy, Minnesota's recycling infrastructure faces both technical and financial challenges. Some counties are dealing with budget reductions by closing down recycling centers or limiting the types of materials they collect. Plastic and glass recycling have been eliminated in some communities. Rural recycling programs, in particular, are facing more obstacles in getting materials collected since population centers are spread out over large areas not to mention the problems associated with moving materials to distant markets. The MPCA continues to explore ways to better support county recycling programs and secondary markets such as the 2005 regional recycling markets workshops, recover more recyclable and organic material from the waste stream, and identify more opportunities to reduce, reuse, and recycle in the manufacturing and business sectors. For more information about the MPCA's funding recommendations designed to bolster the SCORE program, see "Policy Recommendations: Recyclables and Organics" in the *2005 Solid Waste Policy Report*.

**Figure 5: SCORE expenditures**



	1991	1997	1998	1999	2000	2001	2002	2003	2004	Change 2003-04
Greater Minnesota	14.4	20.4	21.5	23.0	23.1	25.8	26.7	29.5	28.5	(3.4%)
Metropolitan Area	20.8	16.1	16.7	18.4	18.6	20.2	19.9	19.7	22.6	14.9%
Total	35.2	36.6	38.1	41.4	41.7	46.0	46.7	49.1	51.1	3.9%

Millions of dollars; decreases indicated by parentheses (x%). The annual SCORE survey includes only county spending; local units of government also fund programs for waste management, reduction, and recycling.

# **Appendix A: County SCORE Survey Responses**

## County SCORE Survey Responses

### Finances: Revenues (part 1)

County	CY2003 revenue carried over	Adjustment to carryover	General revenue	Service fee	Processing facility tip fee	Land disposal facility surcharge
Aitkin	\$165,951	0	\$170,221	\$800	\$27,344	\$0
Anoka	\$0	0	\$58,021	\$86,656	\$0	\$0
Becker	\$0	0	\$0	\$0	\$0	\$0
Beltrami	\$0	0	\$0	\$447,998	\$0	\$0
Benton	\$4,417	0	\$0	\$20,899	\$0	\$0
Big Stone	\$46,228	0	\$12,280	\$0	\$0	\$0
Blue Earth	\$0	0	\$0	\$120,526	\$0	\$0
Brown	\$0	0	\$0	\$310,330	\$0	\$0
Carlton	\$0	0	\$14,190	\$58,860	\$33,726	\$0
Carver	\$0	0	\$0	\$572,126	\$0	\$0
Cass	\$0	0	\$0	\$648,285	\$0	\$0
Chippewa	\$44	0	\$102,071	\$0	\$0	\$0
Chisago	\$74,803	0	\$0	\$70,616	\$0	\$0
Clay	\$195,056	0	\$0	\$230,029	\$0	\$0
Clearwater	\$0	0	\$0	\$39,362	\$0	\$0
Cook	\$0	0	\$133,566	\$0	\$0	\$0
Cottonwood	\$23,042	8,984	\$0	\$180,505	\$0	\$0
Crow Wing	\$0	0	\$535,423	\$0	\$61,153	\$0
Dakota	\$0	0	\$0	\$0	\$0	\$1,499,081
Dodge	(\$11,725)	11,725	\$143,394	\$0	\$22,359	\$0
Faribault	\$7,734	0	\$17,000	\$31,847	\$0	\$0
Fillmore	\$40,203	0	\$12,291	\$0	\$0	\$0
Freeborn	\$0	0	\$309,590	\$1,287	\$0	\$0
Goodhue	\$0	0	\$215,312	\$11,041	\$0	\$0
Grant	(\$7,979)	0	\$0	\$162,800	\$0	\$0
Hennepin	\$0	0	\$0	\$6,984,306	\$0	\$0
Houston	\$0	0	\$24,640	\$0	\$0	\$0
Hubbard	\$0	0	\$13,750	\$524,607	\$0	\$0
Isanti	\$84,150	0	\$19,725	\$0	\$0	\$0
Itasca	\$0	0	\$362,530	\$0	\$0	\$0
Jackson	\$133,695	0	\$12,275	\$0	\$0	\$0
Kanabec	\$101,253	0	\$12,275	\$0	\$0	\$0
Kandiyohi	\$0	0	\$104,486	\$141,479	\$0	\$0
Kittson	\$0	0	\$20,139	\$0	\$48,174	\$0
Koochiching	\$0	0	\$0	\$95,241	\$38,631	\$0
Lac Qui Parle	(\$23,302)	0	\$100,632	\$0	\$0	\$0
Lake	(\$112,448)	112,448	\$0	\$84,284	\$0	\$0
Lake of the Woods	\$0	0	\$0	\$20,974	\$0	\$0
Le Sueur	\$0	0	\$97,032	\$0	\$0	\$0
Lincoln	\$54,840	0	\$44,493	\$9,063	\$0	\$0
Lyon	\$0	0	\$0	\$182,899	\$0	\$80,000
Mahnomen	\$45,643	0	\$12,280	\$0	\$0	\$0
Marshall	\$0	0	\$29,437	\$0	\$0	\$0
Martin	(\$1,342)	1,342	\$0	\$240,876	\$0	\$0
McLeod	\$0	0	\$0	\$0	\$148,397	\$658,884
Meeker	\$10,303	0	\$15,000	\$0	\$0	\$0



## County SCORE Survey Responses

### Finances: Revenues (part 1)

County	CY2003 revenue carried over	Adjustment to carryover	General revenue	Service fee	Processing facility tip fee	Land disposal facility surcharge
Mille Lacs	(\$5,460)	5,460	\$70,478	\$0	\$0	\$0
Morrison	\$0	0	\$51,758	\$0	\$0	\$0
Mower	\$0	0	\$0	\$343,833	\$0	\$0
Murray	\$18,959	0	\$13,750	\$0	\$0	\$0
Nicollet	\$0	0	\$243,904	\$0	\$0	\$0
Nobles	\$92,825	0	\$8,836	\$187,417	\$0	\$128,551
Norman	(\$22,057)	22,057	\$9,820	\$0	\$0	\$0
Olmsted	(\$380,640)	380,640	\$0	\$0	\$295,877	\$0
Otter Tail	\$15,200	0	\$0	\$438,733	\$0	\$0
Pennington	\$0	0	\$0	\$15,892	\$0	\$0
Pine	\$0	0	\$69,534	\$0	\$0	\$0
Pipestone	\$0	0	\$120,653	\$0	\$0	\$0
Polk	\$105,988	0	\$0	\$200,201	\$0	\$0
Pope/Douglas	(\$142,856)	142,856	\$257,144	\$0	\$0	\$0
Ramsey	\$0	0	\$0	\$3,777,110	\$0	\$0
Red Lake	\$0	0	\$20,084	\$0	\$0	\$0
Redwood	\$0	0	\$0	\$157,563	\$0	\$0
Renville	\$140,964	0	\$141,149	\$0	\$3,638	\$0
Rice	(\$173,841)	173,841	\$0	\$374,557	\$0	\$0
Rock	\$1,119	0	\$51,452	\$0	\$0	\$0
Roseau	(\$145,042)	145,042	\$0	\$0	\$0	\$0
Scott	\$619,030	0	\$105,825	\$0	\$0	\$0
Sherburne	\$110,858	0	\$0	\$0	\$0	\$70,293
Sibley	\$0	0	\$127,534	\$0	\$0	\$0
St. Louis	\$0	0	\$0	\$451,348	\$0	\$40,944
Stearns	\$94,996	0	\$39,709	\$108,031	\$0	\$0
Steele	\$0	0	\$13,344	\$339,262	\$0	\$0
Stevens	\$28,434	0	\$12,280	\$0	\$0	\$0
Swift	(\$7,670)	7,670	\$72,500	\$0	\$0	\$0
Todd	\$0	0	\$131,078	\$0	\$0	\$0
Traverse	(\$30,073)	30,073	\$12,275	\$0	\$0	\$0
Wabasha	(\$98,076)	98,076	\$12,562	\$0	\$0	\$0
Wadena	\$0	0	\$47,876	\$0	\$0	\$0
Waseca	\$0	0	\$0	\$31,627	\$0	\$0
Washington	\$0	0	\$0	\$745,549	\$0	\$0
Watsonwan	\$288,811	0	\$14,196	\$138,460	\$0	\$0
Wilkin	\$0	0	\$0	\$84,712	\$0	\$0
Winona	(\$26,329)	0	\$627,664	\$0	\$0	\$0
WLSSD	(\$836,343)	836,343	\$0	\$856,000	\$396,874	\$0
Wright	\$745,610	0	\$57,514	\$16,644	\$0	\$48,421
Yellow Medicine	\$37,175	0	\$12,375	\$58,597	\$0	\$19,540
<hr/>						
Metro Area	\$110,858	\$0	\$58,021	\$12,165,747	\$0	\$1,569,374
Greater Minn.	\$1,151,286	\$1,976,557	\$4,879,326	\$7,437,484	\$1,076,172	\$976,340
Minnesota	\$1,262,144	\$1,976,557	\$4,937,347	\$19,603,231	\$1,076,172	\$2,545,714

## County SCORE Survey Responses

### Finances: Revenues (part 2)

County	SCORE pass-through	Grants	HHW funding	Material sales	Other	Total Revenue
Aitkin	\$49,099	\$5,115	\$3,952	\$0	\$0	\$422,481
Anoka	\$708,603	\$177,343	\$0	\$0	\$817,106	\$1,847,729
Becker	\$70,598	\$0	\$17,927	\$0	\$331,521	\$420,046
Beltrami	\$94,180	\$0	\$7,231	\$0	\$0	\$549,409
Benton	\$83,757	\$0	\$0	\$0	\$1,593	\$110,666
Big Stone	\$49,099	\$0	\$2,400	\$0	\$0	\$110,006
Blue Earth	\$130,781	\$0	\$61,712	\$0	\$43,512	\$356,531
Brown	\$61,196	\$0	\$3,566	\$0	\$12,914	\$388,006
Carlton	\$75,048	\$11,970	\$6,321	\$0	\$0	\$200,115
Carver	\$89,032	\$87,184	\$0	\$0	\$124,414	\$872,756
Cass	\$63,986	\$13,710	\$9,890	\$0	\$5,000	\$740,871
Chippewa	\$49,099	\$0	\$2,400	\$0	\$0	\$153,614
Chisago	\$104,228	\$0	\$48,453	\$36	\$18,978	\$317,115
Clay	\$118,755	\$0	\$10,985	\$0	\$458	\$555,282
Clearwater	\$49,099	\$0	\$7,453	\$0	\$9,368	\$105,282
Cook	\$49,099	\$0	\$2,654	\$58,628	\$0	\$243,947
Cottonwood	\$49,099	\$0	\$0	\$2,255	\$8,458	\$272,343
Crow Wing	\$131,957	\$0	\$12,767	\$0	\$70,720	\$812,020
Dakota	\$849,835	\$0	\$0	\$0	\$72,421	\$2,421,337
Dodge	\$49,099	\$0	\$1,782	\$124,418	\$11,213	\$352,264
Faribault	\$49,099	\$0	\$0	\$0	\$20,133	\$125,813
Fillmore	\$49,164	\$3,031	\$6,564	\$0	\$0	\$111,253
Freeborn	\$73,380	\$0	\$10,145	\$1,283	\$0	\$395,685
Goodhue	\$103,098	\$0	\$20,465	\$129,375	\$0	\$479,291
Grant	\$49,099	\$0	\$0	\$0	\$250	\$204,170
Hennepin	\$1,293,689	\$299,444	\$19,032	\$1,783,848	\$105,182	\$10,485,501
Houston	\$49,099	\$750	\$4,006	\$144,585	\$50,943	\$274,023
Hubbard	\$49,099	\$0	\$3,938	\$0	\$0	\$591,393
Isanti	\$78,899	\$0	\$2,423	\$0	\$0	\$185,197
Itasca	\$100,970	\$0	\$2,858	\$0	\$0	\$466,358
Jackson	\$49,099	\$0	\$0	\$4	\$5,075	\$200,147
Kanabec	\$0	\$49,099	\$1,371	\$0	\$0	\$163,997
Kandiyohi	\$94,351	\$0	\$63,519	\$433,773	\$127,309	\$964,917
Kittson	\$49,099	\$0	\$4,692	\$34,836	\$9,802	\$166,742
Koochiching	\$49,099	\$0	\$3,566	\$22,103	\$0	\$208,640
Lac Qui Parle	\$49,099	\$0	\$2,400	\$0	\$0	\$128,830
Lake	\$24,559	\$0	\$4,232	\$24,418	\$2,170	\$139,663
Lake of the Woods	\$49,079	\$0	\$0	\$34,233	\$1,947	\$106,233
Le Sueur	\$60,140	\$0	\$3,596	\$26,922	\$14,359	\$202,049
Lincoln	\$49,099	\$10,430	\$0	\$0	\$3,751	\$171,676
Lyon	\$86,536	\$30,000	\$73,940	\$398	\$2,244	\$456,017
Mahnomen	\$49,099	\$0	\$723	\$0	\$2,869	\$110,614
Marshall	\$49,099	\$0	\$4,989	\$22,345	\$17,363	\$123,233
Martin	\$49,136	\$0	\$0	\$0	\$4,794	\$294,806
McLeod	\$81,628	\$5,621	\$10,410	\$141,858	\$44,503	\$1,091,301
Meeker	\$78,909	\$0	\$3,258	\$0	\$0	\$107,469

## County SCORE Survey Responses

### Finances: Revenues (part 2)

County	SCORE pass-through	Grants	HHW funding	Material sales	Other	Total Revenue
Mille Lacs	\$54,581	\$0	\$5,580	\$0	\$0	\$130,639
Morrison	\$74,220	\$0	\$7,353	\$0	\$344,079	\$477,410
Mower	\$88,930	\$0	\$14,004	\$216,350	\$4,199	\$667,316
Murray	\$49,099	\$0	\$0	\$0	\$2,129	\$83,937
Nicollet	\$70,081	\$0	\$6,112	\$29,304	\$11,526	\$360,927
Nobles	\$49,099	\$0	\$0	\$0	\$6,463	\$473,191
Norman	\$49,099	\$0	\$3,195	\$9	\$39,610	\$101,732
Olmsted	\$299,066	\$0	\$119,455	\$0	\$83,348	\$797,746
Otter Tail	\$133,393	\$0	\$40,415	\$541,244	\$33,337	\$1,202,321
Pennington	\$49,099	\$0	\$0	\$0	\$0	\$64,991
Pine	\$62,910	\$0	\$0	\$0	\$0	\$132,444
Pipestone	\$49,099	\$0	\$0	\$0	\$0	\$169,752
Polk	\$71,144	\$0	\$8,074	\$58,429	\$1,624	\$445,459
Pope/Douglas	\$126,670	\$0	\$14,105	\$0	\$500	\$398,419
Ramsey	\$1,629,393	\$242,158	\$0	\$0	\$147,383	\$5,796,044
Red Lake	\$49,099	\$0	\$5,401	\$8,037	\$0	\$82,621
Redwood	\$49,099	\$0	\$34,220	\$136,510	\$330	\$377,721
Renville	\$49,099	\$0	\$0	\$0	\$0	\$334,850
Rice	\$135,218	\$0	\$30,588	\$503,899	\$40,841	\$1,085,103
Rock	\$49,099	\$0	\$0	\$0	\$13,490	\$115,160
Roseau	\$49,099	\$0	\$5,428	\$27,846	\$19,958	\$102,331
Scott	\$233,775	\$0	\$0	\$0	\$0	\$958,630
Sherburne	\$167,100	\$1,436	\$2,545	\$0	\$780	\$353,012
Sibley	\$49,099	\$0	\$2,675	\$21,381	\$9,542	\$210,231
St. Louis	\$219,090	\$0	\$17,953	\$340,216	\$0	\$1,069,551
Stearns	\$313,251	\$0	\$5,502	\$0	\$13,603	\$575,091
Steele	\$78,956	\$0	\$0	\$0	\$995	\$432,557
Stevens	\$49,099	\$0	\$0	\$0	\$50	\$89,863
Swift	\$49,099	\$0	\$2,400	\$109,473	\$0	\$233,472
Todd	\$55,724	\$0	\$5,498	\$106,967	\$0	\$299,267
Traverse	\$49,099	\$0	\$0	\$0	\$0	\$61,374
Wabasha	\$25,158	\$750	\$3,199	\$47	\$1,125	\$42,842
Wadena	\$49,099	\$0	\$0	\$0	\$0	\$96,975
Waseca	\$49,099	\$0	\$0	\$164,475	\$396	\$245,597
Washington	\$484,535	\$111,014	\$0	\$0	\$21,660	\$1,362,758
Watsonwan	\$49,099	\$0	\$3,340	\$0	\$1,218	\$495,124
Wilkin	\$49,099	\$0	\$0	\$114,559	\$0	\$248,370
Winona	\$113,430	\$0	\$25,144	\$67,506	\$7,565	\$814,980
WLSSD	\$236,168	\$28,422	\$253,374	\$41,307	\$442,142	\$2,254,288
Wright	\$230,055	\$745	\$8,753	\$0	\$21,466	\$1,129,207
Yellow Medicine	\$49,099	\$0	\$0	\$0	\$529	\$177,315
<hr/>						
Metro Area	\$5,222,187	\$918,579	\$21,577	\$1,783,848	\$1,288,946	\$23,139,136
Greater Minn.	\$6,302,818	\$159,643	\$1,048,354	\$3,689,028	\$1,921,313	\$30,618,321
Minnesota	\$11,525,005	\$1,078,221	\$1,069,931	\$5,472,876	\$3,210,259	\$53,757,458

## County SCORE Survey Responses

### Finances: Revenue Summary

County	Adjusted CY2003 Revenue (carried over)	CY2003 Revenue	Total Revenue
Aitkin	\$165,951	\$256,530	\$422,481
Anoka	\$0	\$1,847,729	\$1,847,729
Becker	\$0	\$420,046	\$420,046
Beltrami	\$0	\$549,409	\$549,409
Benton	\$4,417	\$106,249	\$110,666
Big Stone	\$46,228	\$63,779	\$110,006
Blue Earth	\$0	\$356,531	\$356,531
Brown	\$0	\$388,006	\$388,006
Carlton	\$0	\$200,115	\$200,115
Carver	\$0	\$872,756	\$872,756
Cass	\$0	\$740,871	\$740,871
Chippewa	\$44	\$153,570	\$153,614
Chisago	\$74,803	\$242,313	\$317,115
Clay	\$195,056	\$360,226	\$555,282
Clearwater	\$0	\$105,282	\$105,282
Cook	\$0	\$243,947	\$243,947
Cottonwood	\$32,026	\$240,317	\$272,343
Crow Wing	\$0	\$812,020	\$812,020
Dakota	\$0	\$2,421,337	\$2,421,337
Dodge	\$0	\$352,264	\$352,264
Faribault	\$7,734	\$118,079	\$125,813
Fillmore	\$40,203	\$71,050	\$111,253
Freeborn	\$0	\$395,685	\$395,685
Goodhue	\$0	\$479,291	\$479,291
Grant	(\$7,979)	\$212,149	\$204,170
Hennepin	\$0	\$10,485,501	\$10,485,501
Houston	\$0	\$274,023	\$274,023
Hubbard	\$0	\$591,393	\$591,393
Isanti	\$84,150	\$101,047	\$185,197
Itasca	\$0	\$466,358	\$466,358
Jackson	\$133,695	\$66,453	\$200,147
Kanabec	\$101,253	\$62,744	\$163,997
Kandiyohi	\$0	\$964,917	\$964,917
Kittson	\$0	\$166,742	\$166,742
Koochiching	\$0	\$208,640	\$208,640
Lac Qui Parle	(\$23,302)	\$152,131	\$128,830
Lake	\$0	\$139,663	\$139,663
Lake of the Woods	\$0	\$106,233	\$106,233
Le Sueur	\$0	\$202,049	\$202,049
Lincoln	\$54,840	\$116,836	\$171,676
Lyon	\$0	\$456,017	\$456,017
Mahnomen	\$45,643	\$64,971	\$110,614
Marshall	\$0	\$123,233	\$123,233
Martin	\$0	\$294,806	\$294,806
McLeod	\$0	\$1,091,301	\$1,091,301
Meeker	\$10,303	\$97,167	\$107,469

## County SCORE Survey Responses

### Finances: Revenue Summary

County	Adjusted CY2003 Revenue (carried over)	CY2003 Revenue	Total Revenue
Mille Lacs	\$0	\$130,639	\$130,639
Morrison	\$0	\$477,410	\$477,410
Mower	\$0	\$667,316	\$667,316
Murray	\$18,959	\$64,978	\$83,937
Nicollet	\$0	\$360,927	\$360,927
Nobles	\$92,825	\$380,366	\$473,191
Norman	\$0	\$101,732	\$101,732
Olmsted	\$0	\$797,746	\$797,746
Otter Tail	\$15,200	\$1,187,121	\$1,202,321
Pennington	\$0	\$64,991	\$64,991
Pine	\$0	\$132,444	\$132,444
Pipestone	\$0	\$169,752	\$169,752
Polk	\$105,988	\$339,471	\$445,459
Pope/Douglas	\$0	\$398,419	\$398,419
Ramsey	\$0	\$5,796,044	\$5,796,044
Red Lake	\$0	\$82,621	\$82,621
Redwood	\$0	\$377,721	\$377,721
Renville	\$140,964	\$193,886	\$334,850
Rice	\$0	\$1,085,103	\$1,085,103
Rock	\$1,119	\$114,041	\$115,160
Roseau	\$0	\$102,331	\$102,331
Scott	\$619,030	\$339,600	\$958,630
Sherburne	\$110,858	\$242,154	\$353,012
Sibley	\$0	\$210,231	\$210,231
St. Louis	\$0	\$1,069,551	\$1,069,551
Stearns	\$94,996	\$480,095	\$575,091
Steele	\$0	\$432,557	\$432,557
Stevens	\$28,434	\$61,429	\$89,863
Swift	\$0	\$233,472	\$233,472
Todd	\$0	\$299,267	\$299,267
Traverse	\$0	\$61,374	\$61,374
Wabasha	\$0	\$42,842	\$42,842
Wadena	\$0	\$96,975	\$96,975
Waseca	\$0	\$245,597	\$245,597
Washington	\$0	\$1,362,758	\$1,362,758
Watsonwan	\$288,811	\$206,312	\$495,124
Wilkin	\$0	\$248,370	\$248,370
Winona	(\$26,329)	\$841,309	\$814,980
WLSSD	\$0	\$2,254,288	\$2,254,288
Wright	\$745,610	\$383,598	\$1,129,207
Yellow Medicine	\$37,175	\$140,141	\$177,315
<hr/>			
Metro Area	\$110,858	\$23,028,278	\$23,139,136
Greater Minn.	\$3,127,843	\$27,490,478	\$30,618,321
Minnesota	\$3,238,701	\$50,518,757	\$53,757,458

## County SCORE Survey Responses

### Finances: Expenditures by program area (part 1)

County	Planning & administration	Recycling	Yard waste	HHW and problem materials	Source reduction
Aitkin	\$118,001	\$126,452	\$0	\$24,893	\$0
Anoka	\$544,721	\$21,825	\$82,996	\$399,715	\$12,091
Becker	\$176,307	\$136,671	\$11,097	\$38,549	\$0
Beltrami	\$116,022	\$388,518	\$0	\$44,869	\$0
Benton	\$84,586	\$86	\$0	\$8,220	\$0
Big Stone	\$41,231	\$108,060	\$0	\$7,343	\$0
Blue Earth	\$5,169	\$216,292	\$0	\$97,052	\$0
Brown	\$36,552	\$330,692	\$0	\$35,751	\$0
Carlton	\$44,226	\$86,550	\$1,900	\$51,033	\$0
Carver	\$299,295	\$89,519	\$30,665	\$350,657	\$0
Cass	\$131,498	\$535,179	\$9,152	\$46,548	\$7,043
Chippewa	\$27,798	\$123,320	\$0	\$2,452	\$0
Chisago	\$98,193	\$57,170	\$0	\$77,487	\$0
Clay	\$183,709	\$220,553	\$26,179	\$78,593	\$0
Clearwater	\$21,808	\$51,577	\$3,838	\$24,848	\$0
Cook	\$181,195	\$50,597	\$0	\$11,642	\$0
Cottonwood	\$130,731	\$58,113	\$0	\$5,170	\$0
Crow Wing	\$141,740	\$277,724	\$5,814	\$126,831	\$5,000
Dakota	\$1,257,871	\$28,403	\$0	\$732,501	\$0
Dodge	\$26,707	\$238,848	\$0	\$25,657	\$20,208
Faribault	\$780	\$37,275	\$0	\$37,321	\$0
Fillmore	\$12,115	\$45,035	\$0	\$27,578	\$0
Freeborn	\$88,945	\$291,285	\$2,293	\$12,476	\$0
Goodhue	\$342,904	\$92,944	\$0	\$40,068	\$0
Grant	\$0	\$148,292	\$0	\$57,891	\$0
Hennepin	\$1,374,980	\$1,201,042	\$32,807	\$4,748,001	\$110,364
Houston	\$27,492	\$236,553	\$0	\$6,438	\$0
Hubbard	\$63,378	\$407,589	\$3,950	\$96,514	\$0
Isanti	\$46,295	\$39,332	\$0	\$11,325	\$0
Itasca	\$98,393	\$328,439	\$932	\$36,853	\$0
Jackson	\$31,067	\$22,114	\$0	\$16,930	\$0
Kanabec	\$5,667	\$50,976	\$0	\$5,793	\$0
Kandiyohi	\$221,360	\$642,397	\$0	\$101,160	\$0
Kittson	\$30,201	\$92,694	\$0	\$2,265	\$0
Koochiching	\$83,254	\$100,807	\$0	\$19,563	\$0
Lac Qui Parle	\$49,949	\$49,584	\$0	\$962	\$0
Lake	\$60,464	\$145,879	\$79,988	\$10,351	\$0
Lake of the Woods	\$513	\$83,433	\$1,027	\$20,120	\$0
Le Sueur	\$44,842	\$57,861	\$0	\$54,460	\$0
Lincoln	\$36,120	\$70,374	\$0	\$3,219	\$0
Lyon	\$31,975	\$226,885	\$0	\$112,739	\$42,721
Mahnomen	\$39,786	\$16,877	\$0	\$15,982	\$0
Marshall	\$22,759	\$394	\$0	\$8,691	\$0
Martin	\$30,834	\$170,600	\$70	\$802	\$0
McLeod	\$331,006	\$260,941	\$42,156	\$53,934	\$0
Meeker	\$20,259	\$25,996	\$0	\$9,467	\$0

## County SCORE Survey Responses

### Finances: Expenditures by program area (part 1)

County	Planning & administration	Recycling	Yard waste	HHW and problem materials	Source reduction
Mille Lacs	\$34,500	\$91,204	\$0	\$4,935	\$0
Morrison	\$61,706	\$143,261	\$18,372	\$189,421	\$0
Mower	\$112,382	\$414,517	\$0	\$28,045	\$0
Murray	\$46,238	\$24,950	\$0	\$2,295	\$0
Nicollet	\$53,187	\$203,560	\$0	\$67,449	\$0
Nobles	\$79,182	\$193,528	\$0	\$73,040	\$0
Norman	\$23,788	\$52,131	\$0	\$11,567	\$0
Olmsted	\$50,810	\$331,653	\$153,268	\$348,724	\$111,593
Otter Tail	\$543,829	\$424,054	\$3,420	\$158,567	\$4,788
Pennington	\$0	\$55,500	\$0	\$9,491	\$0
Pine	\$20,484	\$110,960	\$0	\$0	\$0
Pipestone	\$27,230	\$138,074	\$0	\$2,843	\$0
Polk	\$37,828	\$190,835	\$3,075	\$68,527	\$0
Pope/Douglas	\$160,248	\$127,445	\$0	\$38,048	\$0
Ramsey	\$1,549,359	\$91,288	\$1,140,719	\$1,075,479	\$17,540
Red Lake	\$17,387	\$59,170	\$0	\$5,786	\$0
Redwood	\$201,947	\$155,015	\$0	\$7,020	\$3,000
Renville	\$55,907	\$140,469	\$0	\$8,078	\$0
Rice	\$450,363	\$502,149	\$37,000	\$108,504	\$500
Rock	\$44,030	\$53,457	\$2,588	\$14,012	\$600
Roseau	\$15,283	\$0	\$0	\$27,111	\$0
Scott	\$293,804	\$0	\$0	\$91,088	\$0
Sherburne	\$5,040	\$6,192	\$1,500	\$91,620	\$0
Sibley	\$40,093	\$41,401	\$0	\$48,621	\$0
St. Louis	\$123,692	\$727,227	\$6,810	\$171,509	\$0
Stearns	\$129,197	\$45,482	\$12,340	\$100,962	\$12,340
Steele	\$98,555	\$307,957	\$0	\$8,218	\$0
Stevens	\$36,403	\$29,303	\$950	\$16,388	\$0
Swift	\$166,810	\$57,536	\$1,600	\$11,460	\$880
Todd	\$128,439	\$100,209	\$1,000	\$67,354	\$1,000
Traverse	\$52,874	\$27,306	\$0	\$5,556	\$0
Wabasha	\$53,540	\$74,401	\$0	\$16,235	\$0
Wadena	\$0	\$79,417	\$3,000	\$14,427	\$0
Waseca	\$65,135	\$142,253	\$768	\$36,129	\$0
Washington	\$208,401	\$9,401	\$0	\$547,900	\$34,951
Watsonwan	\$12,874	\$134,939	\$0	\$7,202	\$0
Wilkin	\$49,337	\$150,331	\$3,427	\$42,298	\$2,019
Winona	\$213,026	\$525,229	\$0	\$60,051	\$0
WLSSD	\$1,132,080	\$499,686	\$89,264	\$516,394	\$0
Wright	\$29,127	\$26,771	\$23,609	\$141,253	\$0
Yellow Medicine	\$6,965	\$97,226	\$0	\$1,154	\$0
<hr/>					
Metro Area	\$5,239,667	\$1,447,670	\$1,288,687	\$7,945,873	\$174,946
Greater Minn.	\$7,954,111	\$13,129,566	\$548,889	\$3,999,603	\$211,691
Minnesota	\$13,193,778	\$14,577,236	\$1,837,575	\$11,945,476	\$386,637



## County SCORE Survey Responses

### Finances: Expenditures by program area (part 2)

County	Education	Market development	Litter prevention	County grants to other local units of government
Aitkin	\$7,252	\$0	\$0	\$0
Anoka	\$77,778	\$0	\$0	\$703,871
Becker	\$7,846	\$0	\$0	\$49,576
Beltrami	\$0	\$0	\$0	\$0
Benton	\$1,572	\$0	\$0	\$98,091
Big Stone	\$0	\$0	\$0	\$0
Blue Earth	\$36,761	\$0	\$1,257	\$0
Brown	\$11,031	\$0	\$0	\$0
Carlton	\$2,010	\$0	\$0	\$14,396
Carver	\$17,079	\$0	\$9,260	\$76,281
Cass	\$11,451	\$0	\$0	\$0
Chippewa	\$44	\$0	\$0	\$0
Chisago	\$20,747	\$0	\$0	\$0
Clay	\$13,825	\$0	\$0	\$0
Clearwater	\$3,211	\$0	\$0	\$0
Cook	\$513	\$0	\$0	\$0
Cottonwood	\$4,232	\$0	\$0	\$0
Crow Wing	\$23,376	\$0	\$35,095	\$196,440
Dakota	\$210,204	\$0	\$0	\$192,358
Dodge	\$29,522	\$900	\$0	\$0
Faribault	\$16,231	\$0	\$0	\$38,070
Fillmore	\$6,972	\$0	\$366	\$0
Freeborn	\$686	\$0	\$0	\$0
Goodhue	\$3,376	\$0	\$0	\$0
Grant	\$0	\$0	\$0	\$0
Hennepin	\$256,479	\$0	\$0	\$2,761,828
Houston	\$3,540	\$0	\$0	\$0
Hubbard	\$19,962	\$0	\$0	\$0
Isanti	\$58	\$0	\$0	\$0
Itasca	\$1,740	\$0	\$0	\$0
Jackson	\$6,377	\$0	\$0	\$0
Kanabec	\$0	\$0	\$96	\$0
Kandiyohi	\$0	\$0	\$0	\$0
Kittson	\$123	\$0	\$0	\$41,459
Koochiching	\$4,915	\$0	\$100	\$0
Lac Qui Parle	\$3,445	\$0	\$0	\$1,500
Lake	\$1,073	\$600	\$0	\$0
Lake of the Woods	\$1,140	\$0	\$0	\$0
Le Sueur	\$33,084	\$0	\$0	\$11,803
Lincoln	\$3,194	\$0	\$0	\$0
Lyon	\$41,696	\$0	\$0	\$0
Mahnomen	\$1,635	\$0	\$418	\$0
Marshall	\$0	\$0	\$0	\$91,390
Martin	\$5,265	\$0	\$109	\$21,329
McLeod	\$44,480	\$0	\$0	\$358,785
Meeker	\$18,641	\$0	\$0	\$3,120

## County SCORE Survey Responses

### Finances: Expenditures by program area (part 2)

County	Education	Market development	Litter prevention	County grants to other local units of government
Mille Lacs	\$0	\$0	\$0	\$0
Morrison	\$1,308	\$0	\$0	\$63,342
Mower	\$7,911	\$0	\$0	\$0
Murray	\$4,986	\$0	\$0	\$600
Nicollet	\$36,731	\$0	\$0	\$0
Nobles	\$6,269	\$0	\$0	\$0
Norman	\$3,168	\$0	\$0	\$0
Olmsted	\$187,459	\$0	\$0	\$0
Otter Tail	\$49,818	\$0	\$2,645	\$0
Pennington	\$0	\$0	\$0	\$0
Pine	\$1,000	\$0	\$0	\$0
Pipestone	\$1,605	\$0	\$0	\$0
Polk	\$9,180	\$0	\$0	\$15,000
Pope/Douglas	\$13,278	\$0	\$0	\$0
Ramsey	\$351,835	\$0	\$0	\$985,000
Red Lake	\$278	\$0	\$0	\$0
Redwood	\$10,742	\$0	\$0	\$0
Renville	\$1,223	\$0	\$0	\$0
Rice	\$15,900	\$1,820	\$100	\$0
Rock	\$4,992	\$0	\$0	\$0
Roseau	\$0	\$0	\$0	\$104,402
Scott	\$15,375	\$0	\$0	\$0
Sherburne	\$47,241	\$5,000	\$42,267	\$101,922
Sibley	\$30,645	\$0	\$0	\$49,472
St. Louis	\$40,313	\$0	\$0	\$0
Stearns	\$31,888	\$12,340	\$12,340	\$121,167
Steele	\$17,827	\$0	\$0	\$0
Stevens	\$6,452	\$0	\$0	\$0
Swift	\$3,600	\$0	\$0	\$0
Todd	\$1,265	\$0	\$0	\$0
Traverse	\$643	\$0	\$0	\$4,000
Wabasha	\$0	\$0	\$0	\$0
Wadena	\$131	\$0	\$0	\$0
Waseca	\$1,312	\$0	\$0	\$0
Washington	\$136,881	\$0	\$0	\$425,224
Watonwan	\$2,691	\$0	\$0	\$0
Wilkin	\$959	\$0	\$0	\$0
Winona	\$6,231	\$0	\$0	\$0
WLSSD	\$86,149	\$9,908	\$12,903	\$79,844
Wright	\$11,015	\$0	\$0	\$255,774
Yellow Medicine	\$2,397	\$0	\$0	\$0
<hr/>				
Metro Area	\$1,097,498	\$5,000	\$51,527	\$5,246,483
Greater Minn.	\$1,005,767	\$25,568	\$65,430	\$1,619,558
Minnesota	\$2,103,265	\$30,568	\$116,957	\$6,866,041

## County SCORE Survey Responses

### Finances: Balance Sheet

County	Total Revenues	Total Expenditures	CY2003 Balance
Aitkin	\$422,481	\$276,597	\$145,883
Anoka	\$1,847,729	\$1,842,996	\$4,732
Becker	\$420,046	\$420,046	\$0
Beltrami	\$549,409	\$549,409	\$0
Benton	\$110,666	\$192,554	(\$81,888)
Big Stone	\$110,006	\$156,635	(\$46,629)
Blue Earth	\$356,531	\$356,531	\$0
Brown	\$388,006	\$414,026	(\$26,020)
Carlton	\$200,115	\$200,115	\$0
Carver	\$872,756	\$872,756	\$0
Cass	\$740,871	\$740,871	\$0
Chippewa	\$153,614	\$153,614	\$0
Chisago	\$317,115	\$253,597	\$63,518
Clay	\$555,282	\$522,859	\$32,423
Clearwater	\$105,282	\$105,282	\$0
Cook	\$243,947	\$243,947	\$0
Cottonwood	\$272,343	\$198,246	\$74,097
Crow Wing	\$812,020	\$812,020	\$0
Dakota	\$2,421,337	\$2,421,337	\$0
Dodge	\$352,264	\$341,842	\$10,422
Faribault	\$125,813	\$129,677	(\$3,865)
Fillmore	\$111,253	\$92,066	\$19,187
Freeborn	\$395,685	\$395,685	\$0
Goodhue	\$479,291	\$479,291	(\$0)
Grant	\$204,170	\$206,183	(\$2,013)
Hennepin	\$10,485,501	\$10,485,501	\$0
Houston	\$274,023	\$274,023	\$0
Hubbard	\$591,393	\$591,393	(\$0)
Isanti	\$185,197	\$97,010	\$88,187
Itasca	\$466,358	\$466,358	(\$0)
Jackson	\$200,147	\$76,489	\$123,659
Kanabec	\$163,997	\$62,532	\$101,466
Kandiyohi	\$964,917	\$964,917	\$0
Kittson	\$166,742	\$166,742	(\$0)
Koochiching	\$208,640	\$208,640	(\$0)
Lac Qui Parle	\$128,830	\$105,440	\$23,390
Lake	\$139,663	\$298,355	(\$158,692)
Lake of the Woods	\$106,233	\$106,233	\$0
Le Sueur	\$202,049	\$202,049	(\$0)
Lincoln	\$171,676	\$112,907	\$58,769
Lyon	\$456,017	\$456,017	\$0
Mahnomen	\$110,614	\$74,699	\$35,915
Marshall	\$123,233	\$123,233	(\$0)
Martin	\$294,806	\$229,009	\$65,797
McLeod	\$1,091,301	\$1,091,301	\$0
Meeker	\$107,469	\$77,482	\$29,987

## County SCORE Survey Responses

### Finances: Balance Sheet

County	Total Revenues	Total Expenditures	CY2003Balance
Mille Lacs	\$130,639	\$130,639	\$0
Morrison	\$477,410	\$477,410	\$0
Mower	\$667,316	\$562,855	\$104,460
Murray	\$83,937	\$79,069	\$4,868
Nicollet	\$360,927	\$360,927	\$0
Nobles	\$473,191	\$352,019	\$121,172
Norman	\$101,732	\$90,655	\$11,077
Olmsted	\$797,746	\$1,183,507	(\$385,761)
Otter Tail	\$1,202,321	\$1,187,121	\$15,200
Pennington	\$64,991	\$64,991	\$0
Pine	\$132,444	\$132,444	\$0
Pipestone	\$169,752	\$169,752	\$0
Polk	\$445,459	\$324,446	\$121,014
Pope/Douglas	\$398,419	\$339,020	\$59,400
Ramsey	\$5,796,044	\$5,211,220	\$584,824
Red Lake	\$82,621	\$82,621	(\$0)
Redwood	\$377,721	\$377,724	(\$3)
Renville	\$334,850	\$205,677	\$129,173
Rice	\$1,085,103	\$1,116,336	(\$31,233)
Rock	\$115,160	\$119,679	(\$4,519)
Roseau	\$102,331	\$146,796	(\$44,465)
Scott	\$958,630	\$400,267	\$558,363
Sherburne	\$353,012	\$300,782	\$52,230
Sibley	\$210,231	\$210,231	\$0
St. Louis	\$1,069,551	\$1,069,551	\$0
Stearns	\$575,091	\$478,056	\$97,035
Steele	\$432,557	\$432,557	\$0
Stevens	\$89,863	\$89,496	\$367
Swift	\$233,472	\$241,886	(\$8,414)
Todd	\$299,267	\$299,267	\$0
Traverse	\$61,374	\$90,379	(\$29,005)
Wabasha	\$42,842	\$144,176	(\$101,334)
Wadena	\$96,975	\$96,975	\$0
Waseca	\$245,597	\$245,597	\$0
Washington	\$1,362,758	\$1,362,758	\$0
Watsonwan	\$495,124	\$157,706	\$337,417
Wilkin	\$248,370	\$248,370	\$0
Winona	\$814,980	\$804,537	\$10,443
WLSSD	\$2,254,288	\$2,426,228	(\$171,941)
Wright	\$1,129,207	\$487,549	\$641,658
Yellow Medicine	\$177,315	\$107,742	\$69,573
<hr/>			
Metro Area	\$23,139,136	\$22,497,350	\$641,786
Greater Minn.	\$30,618,321	\$28,560,183	\$2,058,139
Minnesota	\$53,757,458	\$51,057,532	\$2,699,925

## County SCORE Survey Responses

### Paper collected for recycling (tons)

County	Computer paper	Corrugated (OCC)	Magazine/catalog	Mixed paper	Newsprint (ONP)	Office paper	Other paper	Phone book	Total Paper
Aitkin	0	772	0	499	0	0	0	0	1,271
Anoka	5	41,796	513	7,745	13,692	345	16,820	42	80,958
Becker	0	3,303	89	151	276	0	0	7	3,826
Beltrami	0	1,770	146	773	76	80	0	0	2,845
Benton	0	2,046	11,719	383	1,259	211	239	15	15,872
Big Stone	0	166	0	166	0	0	0	0	331
Blue Earth	0	18,193	2,323	5,880	7,272	381	4	89	34,142
Brown	0	2,963	0	2,908	1,160	864	0	0	7,894
Carlton	0	2,194	125	669	892	267	0	0	4,147
Carver	0	3,774	0	5,157	1,161	5,823	0	1	15,916
Cass	0	2,746	52	0	2,068	63	0	0	4,928
Chippewa	0	1,243	48	19	467	1	0	0	1,778
Chisago	100	2,086	0	2,221	0	132	0	50	4,589
Clay	0	2,419	119	4	1,148	277	0	24	3,993
Clearwater	0	226	0	84	0	2	0	2	314
Cook	0	495	104	41	147	0	0	5	792
Cottonwood	0	1,306	16	0	217	54	0	0	1,593
Crow Wing	0	3,261	2,669	981	1,109	13	0	10	8,042
Dakota	0	9,950	1,166	23,338	20,095	3,493	0	799	58,841
Dodge	0	954	65	688	0	0	10	0	1,716
Faribault	0	1,097	0	302	136	10	47	0	1,593
Fillmore	0	224	124	141	312	60	0	0	862
Freeborn	0	6,258	0	1,556	2	0	0	0	7,816
Goodhue	0	3,685	102	1,712	2,789	0	200	0	8,488
Grant	0	158	0	0	124	32	0	0	313
Hennepin	0	35,396	3,932	32,950	49,068	9,477	4,405	278	135,506
Houston	0	724	91	0	300	0	0	0	1,115
Hubbard	0	1,813	0	0	463	87	0	0	2,363
Isanti	0	2,427	37	7	733	168	0	10	3,382
Itasca	32	3,203	100	2,336	1,780	429	0	21	7,901
Jackson	0	1,180	0	0	432	44	0	1	1,657
Kanabec	0	595	0	25	124	1	0	0	745
Kandiyohi	0	4,155	321	201	856	205	229	12	5,980
Kittson	0	105	7	0	95	5	0	0	212
Koochiching	0	881	23	1,106	85	35	0	0	2,130
Lac Qui Parle	0	374	45	0	188	45	0	0	651
Lake	0	476	78	0	213	41	14	8	828
Lake of the Woods	0	92	0	0	0	0	0	0	92
Le Sueur	0	810	0	585	175	37	0	0	1,606
Lincoln	0	220	125	0	0	0	0	0	345
Lyon	0	3,163	1	500	143	3	0	0	3,810
Mahnomen	0	83	5	0	44	0	0	0	132
Marshall	0	114	0	37	114	5	0	1	272
Martin	0	4,332	422	444	857	492	147	0	6,694
McLeod	0	2,421	18	475	1,416	319	0	2	4,652
Meeker	0	1,135	14	126	264	68	0	0	1,606

## County SCORE Survey Responses

### Paper collected for recycling (tons)

County	Computer paper	Corrugated (OCC)	Magazine/catalog	Mixed paper	Newsprint (ONP)	Office paper	Other paper	Phone book	Total Paper
Mille Lacs	0	446	0	440	0	0	0	0	886
Morrison	0	2,568	69	0	331	1,376	30	1	4,375
Mower	0	10,154	143	0	1,029	457	0	8	11,791
Murray	0	516	12	0	459	16	0	0	1,004
Nicollet	0	1,933	0	7,435	356	656	0	0	10,380
Nobles	0	3,480	445	0	1,041	600	0	0	5,566
Norman	0	92	0	0	53	0	0	0	145
Olmsted	0	10,359	0	161	4,683	2,080	8,371	17	25,671
Otter Tail	0	3,900	31	0	864	245	0	0	5,040
Pennington	0	689	23	0	146	79	0	0	937
Pine	0	554	0	1,020	0	25	0	0	1,599
Pipestone	0	868	0	0	280	91	0	0	1,239
Polk	0	2,240	254	0	443	73	0	0	3,009
Pope/Douglas	0	10,186	59	256	1,585	176	0	0	12,262
Ramsey	0	2,805	2,258	45,688	18,798	75	1,011	122	70,756
Red Lake	0	149	0	119	0	3	0	1	271
Redwood	0	1,816	190	22	354	182	3	0	2,568
Renville	0	536	203	36	755	54	227	0	1,811
Rice	0	8,651	0	0	2,300	0	0	27	10,978
Rock	24	617	0	0	212	12	0	1	866
Roseau	0	1,996	26	0	146	157	0	0	2,325
Scott	0	21,831	211	18,460	3,512	234	285	2	44,535
Sherburne	0	2,138	108	300	2,107	141	312	9	5,115
Sibley	0	642	0	211	51	2	0	0	906
St. Louis	0	7,104	0	4,029	385	46	0	0	11,564
Stearns	9	10,531	8,042	2,169	5,060	749	157	52	26,769
Steele	0	2,299	21	2,778	3	28	312	0	5,440
Stevens	0	362	10	20	182	20	0	4	598
Swift	39	625	60	0	435	106	0	3	1,268
Todd	0	1,576	61	0	161	0	13,346	0	15,144
Traverse	0	112	28	0	86	10	0	0	236
Wabasha	0	3,797	55	0	813	30	0	0	4,695
Wadena	0	332	0	164	0	0	6	1	503
Waseca	0	2,433	90	1,152	355	513	27,586	10	32,139
Washington	0	15,393	508	14,204	17,662	12,544	2	35	60,350
Watsonwan	0	1,484	0	0	1,037	2	0	0	2,523
Wilkin	0	361	25	0	160	22	0	0	568
Winona	0	6,560	194	3,245	760	425	0	0	11,184
WLSSD	0	15,443	176	2,331	6,995	537	1,677	639	27,798
Wright	2	249	90	24	4,125	6	0	0	4,495
Yellow Medicine	0	482	94	0	240	54	16	0	887
<hr/>									
Metro Area	5	111,252	8,485	129,382	122,583	31,898	22,550	1,285	427,441
Greater Minn.	206	223,841	29,599	69,089	67,132	13,494	52,906	1,023	457,289
Minnesota	212	335,093	38,084	198,471	189,714	45,392	75,455	2,309	884,730

## County SCORE Survey Responses

### Metal collected for recycling (tons)

County	Aluminum	Commingled alum/steel/tin	Other ferrous & non-ferrous	Steel/tin cans	Total Metal
Aitkin	91	0	780	50	921
Anoka	362	485	29,175	999	31,021
Becker	109	0	0	57	166
Beltrami	121	0	1,497	0	1,618
Benton	202	86	6,282	2,561	9,132
Big Stone	55	0	869	9	933
Blue Earth	7,651	3,000	1,526	1,245	13,422
Brown	265	0	2,805	403	3,472
Carlton	185	0	44	137	366
Carver	259	26	3,946	47	4,279
Cass	57	0	112	42	211
Chippewa	10	43	0	50	102
Chisago	145	0	100	193	438
Clay	129	0	7	122	258
Clearwater	40	0	357	125	522
Cook	18	0	496	40	554
Cottonwood	11	0	452	35	498
Crow Wing	122	0	7,658	204	7,984
Dakota	627	9,868	8,131	177	18,803
Dodge	27	0	1,500	55	1,582
Faribault	10	88	154	62	314
Fillmore	36	52	0	81	168
Freeborn	236	4,748	0	460	5,444
Goodhue	303	0	285	55	643
Grant	14	0	167	24	205
Hennepin	4,665	2,193	50,411	2,527	59,796
Houston	156	0	625	57	838
Hubbard	343	0	2,485	62	2,890
Isanti	384	0	92	3,389	3,864
Itasca	100	130	2,100	115	2,445
Jackson	59	0	93	195	347
Kanabec	3	1	194	17	215
Kandiyohi	197	0	0	117	314
Kittson	9	58	77	0	144
Koochiching	81	0	835	24	940
Lac Qui Parle	48	73	44	316	482
Lake	20	0	209	42	271
Lake of the Woods	13	0	330	0	343
Le Sueur	378	1	3,503	232	4,114
Lincoln	0	41	0	0	41
Lyon	153	0	68	50	272
Mahnomen	14	0	52	9	75
Marshall	0	71	175	0	246
Martin	263	1,070	2,614	995	4,942
McLeod	72	61	191	138	463
Meeker	82	29	141	214	465



## County SCORE Survey Responses

### Metal collected for recycling (tons)

County	Aluminum	Commingled alum/steel/tin	Other ferrous & non-ferrous	Steel/tin cans	Total Metal
Mille Lacs	0	66	0	0	66
Morrison	1	171	1,209	32	1,413
Mower	266	0	20	90	377
Murray	57	51	97	0	205
Nicollet	644	38	1,251	69	2,002
Nobles	131	0	0	134	265
Norman	25	0	480	120	626
Olmsted	238	500	3,772	510	5,019
Otter Tail	424	0	4,916	155	5,495
Pennington	0	763	0	0	763
Pine	0	370	2,548	0	2,918
Pipestone	38	43	27	45	153
Polk	197	0	2,974	138	3,309
Pope/Douglas	179	11	3,372	326	3,887
Ramsey	395	604	32,396	904	34,299
Red Lake	12	0	200	36	248
Redwood	540	0	2,886	61	3,486
Renville	84	0	580	178	842
Rice	232	190	1,396	282	2,100
Rock	41	0	1,279	95	1,415
Roseau	44	0	307	216	567
Scott	752	173	14,505	3,354	18,784
Sherburne	248	83	7,467	2,970	10,768
Sibley	310	0	302	23	634
St. Louis	308	2,965	33,882	854	38,009
Stearns	1,177	1,347	19,714	9,078	31,317
Steele	116	10	706	121	953
Stevens	71	0	403	133	607
Swift	115	0	59	78	252
Todd	95	0	0	63	158
Traverse	46	16	0	10	72
Wabasha	57	10	74	467	607
Wadena	221	0	522	45	787
Waseca	123	0	1,068	23	1,214
Washington	1,864	313	5,941	915	9,033
Watonwan	17	0	0	38	54
Wilkin	55	0	61	12	128
Winona	619	0	0	2,278	2,897
WLSSD	580	0	12,864	307	13,751
Wright	229	5	158	818	1,210
Yellow Medicine	12	0	15	66	93
<hr/>					
Metro Area	8,419	13,572	137,468	8,539	167,999
Greater Minn.	20,267	16,280	150,566	32,236	219,349
Minnesota	28,687	29,853	288,033	40,775	387,348

## County SCORE Survey Responses

### Glass collected for recycling (tons)

County	Food & beverage	Other glass	Total Glass
Aitkin	281	0	281
Anoka	4,573	377	4,950
Becker	1,706	0	1,706
Beltrami	617	54	671
Benton	573	4	577
Big Stone	42	0	42
Blue Earth	780	0	780
Brown	383	0	383
Carlton	786	0	786
Carver	5	0	5
Cass	275	0	275
Chippewa	181	0	181
Chisago	641	0	641
Clay	267	0	267
Clearwater	10	0	10
Cook	175	0	175
Cottonwood	119	0	119
Crow Wing	658	0	658
Dakota	6,995	0	6,995
Dodge	225	338	562
Faribault	156	71	227
Fillmore	332	0	332
Freeborn	1,222	0	1,222
Goodhue	1,418	0	1,418
Grant	112	0	112
Hennepin	19,409	1,105	20,514
Houston	556	0	556
Hubbard	411	0	411
Isanti	188	0	188
Itasca	790	0	790
Jackson	104	0	104
Kanabec	47	0	47
Kandiyohi	323	0	323
Kittson	94	0	94
Koochiching	82	0	82
Lac Qui Parle	126	0	126
Lake	196	0	196
Lake of the Woods	500	0	500
Le Sueur	366	0	366
Lincoln	56	0	56
Lyon	190	0	190
Mahnomen	28	0	28
Marshall	101	0	101
Martin	794	255	1,049
McLeod	792	0	792
Meeker	140	0	140

## County SCORE Survey Responses

### Glass collected for recycling (tons)

County	Food & beverage	Other glass	Total Glass
Mille Lacs	252	0	252
Morrison	289	0	289
Mower	264	0	264
Murray	170	0	170
Nicollet	383	0	383
Nobles	240	0	240
Norman	40	0	40
Olmsted	1,960	670	2,630
Otter Tail	0	482	482
Pennington	0	0	0
Pine	211	0	211
Pipestone	144	0	144
Polk	1,080	0	1,080
Pope/Douglas	1,433	0	1,433
Ramsey	6,328	0	6,328
Red Lake	87	0	87
Redwood	315	0	315
Renville	639	0	639
Rice	867	3,754	4,621
Rock	130	0	130
Roseau	126	3,655	3,781
Scott	1,365	0	1,365
Sherburne	752	5	757
Sibley	116	0	116
St. Louis	1,263	0	1,263
Stearns	2,376	13	2,389
Steele	532	20,409	20,941
Stevens	129	0	129
Swift	253	0	253
Todd	124	0	124
Traverse	33	0	33
Wabasha	362	0	362
Wadena	0	0	0
Waseca	216	0	216
Washington	3,565	0	3,565
Watsonwan	155	0	155
Wilkin	65	0	65
Winona	794	0	794
WLSSD	1,915	0	1,915
Wright	1,190	0	1,190
Yellow Medicine	147	0	147
<hr/>			
Metro Area	41,627	1,487	43,114
Greater Minn.	36,508	29,704	66,212
Minnesota	78,135	31,192	109,326

## County SCORE Survey Responses

### Plastic collected for recycling (tons)

County	Film plastic	HDPE	Mixed plastic	Other plastic	PET	Polystyrene (PS)	Total Plastics
Aitkin	0	0	52	0	0	0	52
Anoka	31	90	1,357	1,079	20	91	2,667
Becker	0	0	127	0	0	0	127
Beltrami	0	0	0	0	0	0	0
Benton	49	32	181	12	19	0	293
Big Stone	0	0	28	0	0	0	28
Blue Earth	309	77	1,890	0	549	67	2,892
Brown	22	0	681	0	0	0	702
Carlton	0	15	143	0	11	0	169
Carver	0	0	547	0	3	0	550
Cass	0	0	311	0	28	0	339
Chippewa	1	3	0	3	58	99	165
Chisago	2	0	171	0	0	0	173
Clay	0	0	139	0	0	0	139
Clearwater	0	0	2	0	0	0	2
Cook	0	0	43	0	0	0	43
Cottonwood	0	75	44	1	0	0	120
Crow Wing	0	0	378	0	0	0	378
Dakota	33	1	3,617	0	0	0	3,651
Dodge	0	0	44	215	0	0	258
Faribault	15	0	59	0	13	0	87
Fillmore	0	33	0	0	27	0	60
Freeborn	0	0	856	0	0	0	856
Goodhue	0	228	0	0	119	0	347
Grant	0	0	26	0	0	0	26
Hennepin	0	90	14,077	0	81	0	14,248
Houston	0	30	0	1	40	0	71
Hubbard	0	0	77	0	0	0	77
Isanti	7	0	8	0	0	0	15
Itasca	0	25	27	0	22	0	74
Jackson	0	1	45	5	0	0	51
Kanabec	0	0	93	0	0	0	93
Kandiyohi	0	61	0	0	41	0	102
Kittson	0	2	18	0	4	0	23
Koochiching	0	5	0	0	25	0	30
Lac Qui Parle	0	56	17	0	26	0	100
Lake	0	0	36	0	0	0	36
Lake of the Woods	0	0	0	0	0	0	0
Le Sueur	0	0	74	12	0	0	85
Lincoln	0	0	38	0	0	0	38
Lyon	0	0	177	0	0	0	177
Mahnomen	0	0	7	0	0	0	7
Marshall	0	0	25	0	2	0	27
Martin	15	4	728	0	0	1	748
McLeod	0	0	3,910	0	0	194	4,104
Meeker	0	0	49	0	0	0	49

## County SCORE Survey Responses

### Plastic collected for recycling (tons)

County	Film plastic	HDPE	Mixed plastic	Other plastic	PET	Polystyrene (PS)	Total Plastics
Mille Lacs	0	0	77	0	0	0	77
Morrison	0	0	112	177	0	0	289
Mower	68	57	0	0	33	0	158
Murray	0	2	84	2	0	0	88
Nicollet	86	17	134	0	32	0	269
Nobles	0	93	0	0	77	0	170
Norman	0	0	13	0	0	0	13
Olmsted	0	187	214	0	118	0	520
Otter Tail	0	206	0	0	0	0	206
Pennington	0	0	0	0	0	0	0
Pine	0	0	92	0	0	0	92
Pipestone	0	0	737	0	0	0	737
Polk	0	2	76	0	0	0	78
Pope/Douglas	0	292	129	0	90	0	511
Ramsey	10	0	919	0	0	0	929
Red Lake	0	0	15	0	0	0	15
Redwood	40	15	127	47	5	6	239
Renville	0	0	162	0	0	0	162
Rice	30	147	66	0	105	0	348
Rock	0	38	0	2	41	0	81
Roseau	0	0	46	230	0	0	276
Scott	50	51	402	10	188	0	701
Sherburne	32	19	267	7	13	0	338
Sibley	0	0	18	0	0	0	18
St. Louis	0	102	0	0	106	0	208
Stearns	91	108	655	63	123	232	1,272
Steele	0	0	125	69	0	0	194
Stevens	0	21	0	0	21	0	42
Swift	0	52	0	0	61	0	113
Todd	14	0	18	0	12	0	44
Traverse	0	0	14	0	0	0	14
Wabasha	0	0	133	0	0	0	133
Wadena	0	0	0	0	0	0	0
Waseca	0	33	29	17	38	0	117
Washington	111	10	744	0	8	0	873
Watsonwan	0	0	57	0	0	0	57
Wilkin	0	0	10	0	0	0	10
Winona	33	81	244	53	0	43	454
WLSSD	10	376	4	0	111	0	501
Wright	0	0	297	0	8	0	305
Yellow Medicine	0	0	82	0	0	0	82
Metro Area	217	210	21,527	1,086	124	91	23,254
Greater Minn.	841	2,527	14,670	917	2,155	642	21,753
Minnesota	1,058	2,737	36,197	2,003	2,279	733	45,007

## County SCORE Survey Responses

### Organics, textiles and other materials collected for recycling (tons)

County	Food waste	Carpet	Textiles	Pallets	Unspecified or Other	Total
Aitkin	0	0	10	0	3	13
Anoka	13,453	0	1,571	5,256	2,304	22,585
Becker	0	0	0	0	0	0
Beltrami	0	0	0	0	0	0
Benton	0	0	0	0	2	2
Big Stone	0	0	0	0	0	0
Blue Earth	0	0	823	17,761	0	18,584
Brown	800	0	0	1,056	180	2,036
Carlton	0	0	0	0	0	0
Carver	11,836	0	6	585	2,737	15,164
Cass	0	0	25	0	3,000	3,025
Chippewa	0	0	0	0	152	152
Chisago	0	0	54	10	0	64
Clay	6,558	0	578	441	2	7,579
Clearwater	0	0	10	0	0	10
Cook	0	0	19	0	20	39
Cottonwood	0	0	0	1,600	48	1,648
Crow Wing	0	0	334	0	14,951	15,285
Dakota	8,535	0	6,998	4,999	39,463	59,995
Dodge	0	0	6	0	52	58
Faribault	375	0	6	0	0	381
Fillmore	0	0	9	0	0	9
Freeborn	0	0	3	0	0	3
Goodhue	300	0	33	0	0	333
Grant	0	0	0	0	0	0
Hennepin	43,687	6	6	8,742	289,595	342,036
Houston	0	0	18	0	0	18
Hubbard	0	0	102	0	0	102
Isanti	119	0	7	4,073	0	4,199
Itasca	0	0	0	1,750	0	1,750
Jackson	0	0	142	2	304	448
Kanabec	0	0	0	6	2	8
Kandiyohi	156	0	0	0	0	156
Kittson	22	0	0	0	4	25
Koochiching	0	0	0	0	0	0
Lac Qui Parle	0	0	0	0	0	0
Lake	0	0	0	0	16	16
Lake of the Woods	0	0	0	0	0	0
Le Sueur	3,500	0	0	57	0	3,557
Lincoln	0	0	9	0	0	9
Lyon	0	0	159	0	3,000	3,159
Mahnomen	0	0	0	0	0	0
Marshall	0	0	0	0	0	0
Martin	0	0	89	3,268	2	3,359
McLeod	0	0	0	633	2,307	2,940
Meeker	17	0	0	662	0	679

## County SCORE Survey Responses

### Organics, textiles and other materials collected for recycling (tons)

County	Food waste	Carpet	Textiles	Pallets	Unspecified or Other	Total
Mille Lacs	0	0	0	0	0	0
Morrison	0	0	28	1,420	3	1,451
Mower	0	0	62	13,090	0	13,152
Murray	483	0	146	31	46	705
Nicollet	0	0	0	354	0	354
Nobles	0	0	325	80	0	405
Norman	0	0	0	0	0	0
Olmsted	1,803	0	551	0	2	2,356
Otter Tail	16,592	0	166	43	0	16,801
Pennington	0	0	0	0	0	0
Pine	0	0	0	0	12	12
Pipestone	0	0	125	3,200	104	3,429
Polk	2,308	0	0	0	1,776	4,084
Pope/Douglas	0	124	8	0	213	345
Ramsey	15,308	0	1,022	543	145,053	161,926
Red Lake	0	0	8	0	0	8
Redwood	383	20	838	460	3,018	4,720
Renville	890	0	45	0	0	935
Rice	19,175	0	50	700	0	19,925
Rock	0	0	61	4	0	65
Roseau	531	0	0	527	0	1,058
Scott	169	12	19	627	32	860
Sherburne	387	0	0	6,537	330	7,254
Sibley	2,300	0	0	110	0	2,410
St. Louis	0	0	0	0	0	0
Stearns	1,560	0	0	5,097	4,039	10,696
Steele	0	0	14	5,337	826	6,176
Stevens	0	0	0	0	0	0
Swift	0	0	0	0	0	0
Todd	0	0	0	0	0	0
Traverse	0	0	0	0	0	0
Wabasha	5,848	0	2	150	0	6,001
Wadena	0	0	0	0	201	201
Waseca	0	0	214	0	0	214
Washington	2,033	0	20	1,208	4,053	7,315
Watsonwan	0	0	0	0	0	0
Wilkin	0	0	0	0	69	69
Winona	1,209	0	13	1,538	0	2,760
WLSSD	559	0	1,300	2,620	97	4,576
Wright	0	0	0	1	0	1
Yellow Medicine	0	0	0	0	108	108
<hr/>						
Metro Area	95,239	6	9,623	27,870	483,535	616,274
Greater Minn.	65,655	156	6,409	66,706	34,591	173,518
Minnesota	160,894	162	16,032	94,577	518,126	789,792

## County SCORE Survey Responses

### Problem materials (banned) collected for recycling (tons)

County	Anti-freeze	Electronic appliances	Fluorescent & HID lamps	HHW	Latex paint	Major appliances	Used oil	Used oil filters	Vehicle batteries	Waste tires	Total PM
Aitkin	1	15	1	1	4	181	104	8	100	297	711
Anoka	9	92	8	0	0	1,879	251	146	1,922	626	4,934
Becker	0	0	2	18	7	187	25	15	191	62	506
Beltrami	1	25	2	0	0	250	66	19	255	125	743
Benton	2	0	0	1	2	222	469	17	227	74	1,015
Big Stone	0	0	1	0	1	42	39	6	35	34	159
Blue Earth	4	74	5	11	14	650	122	75	1,100	2,100	4,155
Brown	0	9	5	22	5	161	21	13	165	54	456
Carlton	0	0	1	2	4	199	27	15	203	66	518
Carver	2	140	8	197	7	471	63	37	481	157	1,563
Cass	0	4	4	12	6	279	23	13	173	431	944
Chippewa	0	0	0	0	0	78	10	6	80	26	200
Chisago	4	15	1	28	36	279	37	22	285	93	801
Clay	18	8	10	6	16	312	315	29	319	169	1,204
Clearwater	0	0	0	3	1	51	7	4	52	17	135
Cook	0	0	0	0	0	32	15	2	32	11	92
Cottonwood	0	0	5	0	2	72	10	27	74	24	213
Crow Wing	3	32	17	2	13	951	47	33	358	169	1,625
Dakota	118	474	82	79	186	2,254	301	176	2,677	751	7,097
Dodge	0	0	1	8	0	114	15	9	117	47	311
Faribault	2	0	3	1	1	96	13	8	99	32	254
Fillmore	0	0	2	5	20	128	17	10	131	43	356
Freeborn	0	23	1	11	9	242	517	17	213	323	1,355
Goodhue	1	18	6	10	13	271	36	21	277	90	744
Grant	0	3	1	4	3	38	5	3	38	13	107
Hennepin	34	1,485	28	124	514	6,839	912	533	6,996	2,280	19,744
Houston	0	0	2	0	0	275	16	9	123	169	594
Hubbard	0	0	5	2	1	985	25	9	114	340	1,481
Isanti	4	0	4	11	0	1,192	59	17	217	157	1,660
Itasca	2	0	4	0	0	950	37	22	271	88	1,375
Jackson	0	42	3	1	1	67	9	5	69	22	219
Kanabec	0	4	0	0	0	120	18	7	97	232	479
Kandiyohi	0	0	0	0	0	248	33	19	253	83	636
Kittson	0	2	1	1	1	31	4	2	31	10	83
Koochiching	0	0	2	0	1	84	11	7	86	28	219
Lac Qui Parle	0	40	0	0	0	50	25	4	49	16	184
Lake	5	1	1	0	5	67	60	5	69	30	243
Lake of the Woods	0	0	2	4	2	35	74	3	30	85	236
Le Sueur	0	7	3	6	0	160	21	12	164	150	524
Lincoln	0	0	2	3	0	37	21	3	39	29	134
Lyon	0	0	3	0	0	152	20	12	155	51	393
Mahnomen	0	0	0	0	0	39	83	3	34	52	210
Marshall	1	0	2	1	1	60	8	5	61	20	157
Martin	8	335	30	6	6	276	255	12	130	455	1,513
McLeod	0	0	7	60	17	1,400	29	17	220	72	1,822
Meeker	1	0	17	34	4	139	19	11	171	46	442



## County SCORE Survey Responses

### Problem materials (banned) collected for recycling (tons)

County	Anti-freeze	Electronic appliances	Fluorescent & HID lamps	HHW	Latex paint	Major appliances	Used oil	Used oil filters	Vehicle batteries	Waste tires	Total PM
Mille Lacs	0	0	0	0	0	146	19	11	149	49	374
Morrison	76	4	12	0	7	196	607	15	200	320	1,438
Mower	1	6	6	4	8	234	31	18	239	78	625
Murray	0	1	2	2	1	55	15	4	63	35	178
Nicollet	0	8	10	13	0	185	25	14	190	90	535
Nobles	13	0	10	2	15	124	17	10	127	41	358
Norman	0	0	1	1	3	44	6	3	45	15	118
Olmsted	5	0	1	42	49	792	755	69	868	264	2,845
Otter Tail	0	31	11	60	24	353	47	27	361	118	1,031
Pennington	0	5	5	3	0	82	11	6	84	88	283
Pine	0	0	12	0	0	382	22	13	177	120	726
Pipestone	0	0	0	1	1	58	8	5	59	19	151
Polk	0	0	2	8	2	391	25	15	192	158	792
Pope/Douglas	2	4	78	14	26	272	36	21	278	91	823
Ramsey	0	84	0	0	0	3,092	412	241	3,163	1,031	8,022
Red Lake	0	0	1	1	1	26	7	2	26	15	80
Redwood	42	18	3	6	3	98	230	17	448	717	1,581
Renville	0	2	2	4	3	103	14	8	105	34	275
Rice	12	68	12	6	23	420	48	28	367	120	1,104
Rock	0	0	2	2	1	58	8	5	60	36	171
Roseau	0	8	16	0	2	98	13	8	100	33	278
Scott	147	112	13	95	70	631	84	49	1,927	210	3,338
Sherburne	4	62	2	3	13	449	60	35	459	150	1,236
Sibley	0	4	1	4	0	93	12	7	95	110	325
St. Louis	37	3	10	58	0	1,599	844	40	520	927	4,038
Stearns	0	819	0	0	0	827	637	64	846	1,081	4,273
Steele	0	17	8	4	3	208	28	16	213	69	568
Stevens	0	3	3	5	5	60	8	5	61	20	170
Swift	0	0	3	6	3	70	9	5	72	23	192
Todd	0	0	2	0	2	146	19	11	149	119	449
Traverse	0	0	1	0	1	24	3	2	24	8	63
Wabasha	0	8	1	7	0	133	18	10	136	44	357
Wadena	0	0	0	0	0	225	11	6	84	27	354
Waseca	0	0	2	0	0	117	16	9	120	39	303
Washington	12	0	8	90	144	1,280	171	100	1,310	427	3,541
Watsonwan	0	0	1	0	0	71	9	6	72	24	182
Wilkin	0	0	2	2	0	71	11	8	43	23	160
Winona	0	0	0	19	15	298	40	23	305	99	799
WLSSD	48	214	13	98	60	1,016	95	157	699	228	2,627
Wright	0	17	1	34	46	618	82	48	632	206	1,685
Yellow Medicine	0	0	0	0	0	65	9	5	66	22	166
<hr/>											
Metro Area	179	2,337	137	493	863	16,263	2,168	1,267	17,009	5,421	46,138
Greater Minn.	439	2,010	403	776	569	21,585	6,646	1,329	17,111	12,156	63,025
Minnesota	618	4,347	541	1,268	1,433	37,848	8,814	2,596	34,120	17,577	109,162

## County SCORE Survey Responses

### Wastes generated (tons)

County	Estimated MSW not collected	Problem matls not collected	MSW to facilities: disposal/processing	Tons collected for recycling	Total tons generated
Aitkin	275	229	7,957	2,544	11,005
Anoka	0	7,990	183,437	140,460	331,888
Becker	252	802	14,592	6,231	21,876
Beltrami	0	885	18,736	8,021	27,642
Benton	2,827	959	22,117	28,735	54,638
Big Stone	1,007	81	1,873	1,237	4,199
Blue Earth	1,427	805	44,536	76,765	123,533
Brown	2,267	679	15,499	16,935	35,379
Carlton	881	836	12,693	5,250	19,660
Carver	294	2,058	48,111	41,259	91,722
Cass	210	451	17,058	8,315	26,033
Chippewa	1,679	319	8,097	2,581	12,676
Chisago	630	1,221	24,548	7,641	34,040
Clay	833	1,002	27,096	13,489	42,420
Clearwater	42	150	3,856	1,324	5,371
Cook	30	129	4,021	1,540	5,720
Cottonwood	1,006	290	5,792	5,743	12,831
Crow Wing	254	1,400	41,981	40,599	84,234
Dakota	0	9,131	211,428	178,166	398,724
Dodge	881	488	8,664	3,978	14,011
Faribault	1,847	386	7,769	5,105	15,106
Fillmore	3,064	533	5,341	1,994	10,932
Freeborn	420	0	25,783	18,547	44,750
Goodhue	420	1,152	26,517	12,062	40,151
Grant	765	155	2,173	782	3,875
Hennepin	0	28,852	947,994	603,722	1,580,569
Houston	504	333	5,924	2,630	9,390
Hubbard	0	274	13,939	6,729	20,943
Isanti	2,728	921	23,010	8,946	35,605
Itasca	466	1,047	25,173	18,831	45,517
Jackson	943	283	4,039	3,038	8,303
Kanabec	1,259	212	9,315	1,305	12,091
Kandiyohi	871	1,044	29,601	7,402	38,918
Kittson	101	121	1,738	613	2,573
Koochiching	525	346	8,388	3,399	12,658
Lac Qui Parle	1,679	167	2,840	1,237	5,924
Lake	252	33	6,501	2,413	9,199
Lake of the Woods	17	76	2,551	1,351	3,994
Le Sueur	1,028	558	18,662	11,139	31,387
Lincoln	1,007	121	2,184	706	4,019
Lyon	854	631	18,455	8,099	28,039
Mahnomen	426	0	1,538	577	2,541
Marshall	315	252	5,224	786	6,577
Martin	2,375	82	9,950	23,068	35,475
McLeod	3,694	819	27,676	9,959	42,148
Meeker	588	587	9,216	3,466	13,857

## County SCORE Survey Responses

### Wastes generated (tons)

County	Estimated MSW not collected	Problem matls not collected	MSW to facilities: disposal/processing	Tons collected for recycling	Total tons generated
Mille Lacs	1,679	631	10,572	1,949	14,831
Morrison	378	294	23,462	9,885	34,019
Mower	1,343	983	28,205	24,556	55,087
Murray	902	215	3,275	2,437	6,828
Nicollet	1,049	638	16,346	16,293	34,326
Nobles	1,217	515	10,180	6,559	18,471
Norman	22	178	3,213	1,122	4,535
Olmsted	531	3,379	89,198	57,139	150,247
Otter Tail	982	1,390	32,275	28,664	63,311
Pennington	1,637	342	13,582	2,283	17,844
Pine	574	708	18,415	5,539	25,236
Pipestone	1,196	242	5,060	4,054	10,552
Polk	189	681	17,287	11,853	30,010
Pope/Douglas	496	1,155	29,745	18,782	50,177
Ramsey	0	12,999	422,676	286,601	722,276
Red Lake	8	78	1,404	746	2,237
Redwood	2,045	0	8,225	16,194	26,464
Renville	2,183	420	8,578	3,023	14,203
Rice	1,301	1,453	40,686	38,577	82,017
Rock	588	202	3,880	3,618	8,287
Roseau	682	406	10,794	8,555	20,437
Scott	14	2,788	65,678	63,331	131,811
Sherburne	1,652	1,993	53,401	26,495	83,541
Sibley	443	300	6,673	4,627	12,042
St. Louis	330	677	54,560	52,619	108,186
Stearns	2,776	2,219	74,018	87,472	166,485
Steele	1,070	887	31,946	34,568	68,471
Stevens	406	247	5,166	1,522	7,341
Swift	1,098	291	4,425	2,100	7,915
Todd	2,057	580	11,077	17,384	31,098
Traverse	525	97	972	425	2,019
Wabasha	614	561	6,956	10,193	18,323
Wadena	378	322	7,852	6,122	14,674
Waseca	78	489	10,733	37,629	48,930
Washington	0	5,484	101,358	86,687	193,528
Watonwan	1,049	290	6,390	2,853	10,583
Wilkin	840	141	2,192	1,108	4,281
Winona	1,139	1,257	33,591	20,619	56,605
WLSSD	3,652	2,937	67,704	51,820	126,113
Wright	1,259	2,692	46,930	15,664	66,545
Yellow Medicine	1,217	269	4,305	1,382	7,172
<hr/>					
Metro Area	308	69,302	1,980,682	1,400,226	3,450,518
Greater Minn.	80,235	51,014	1,375,894	1,021,539	2,528,682
Minnesota	80,543	120,317	3,356,576	2,421,765	5,979,200

## County SCORE Survey Responses

### Recycling rate

County	Tons collected for recycling	Total MSW generated	MSW collected for recycling	Source reduction credit	Yard waste credit	Recycling rate with credits
Aitkin	2,544	11,005	23.1%	3%	5%	31.1%
Anoka	140,460	331,888	42.3%	3%	5%	50.3%
Becker	6,231	21,876	28.5%	3%	5%	36.5%
Beltrami	8,021	27,642	29.0%	1%	5%	35.0%
Benton	28,735	54,638	52.6%	2%	5%	59.6%
Big Stone	1,237	4,199	29.5%	2%	3%	34.5%
Blue Earth	76,765	123,533	62.1%	3%	5%	70.1%
Brown	16,935	35,379	47.9%	3%	5%	55.9%
Carlton	5,250	19,660	26.7%	3%	5%	34.7%
Carver	41,259	91,722	45.0%	3%	5%	53.0%
Cass	8,315	26,033	31.9%	3%	5%	39.9%
Chippewa	2,581	12,676	20.4%	0%	5%	25.4%
Chisago	7,641	34,040	22.4%	3%	5%	30.4%
Clay	13,489	42,420	31.8%	3%	5%	39.8%
Clearwater	1,324	5,371	24.6%	3%	5%	32.6%
Cook	1,540	5,720	26.9%	3%	5%	34.9%
Cottonwood	5,743	12,831	44.8%	3%	5%	52.8%
Crow Wing	40,599	84,234	48.2%	6%	5%	59.2%
Dakota	178,166	398,724	44.7%	3%	5%	52.7%
Dodge	3,978	14,011	28.4%	2%	5%	35.4%
Faribault	5,105	15,106	33.8%	0%	5%	38.8%
Fillmore	1,994	10,932	18.2%	3%	5%	26.2%
Freeborn	18,547	44,750	41.4%	3%	5%	49.4%
Goodhue	12,062	40,151	30.0%	1%	5%	36.0%
Grant	782	3,875	20.2%	0%	5%	25.2%
Hennepin	603,722	1,580,569	38.2%	3%	5%	46.2%
Houston	2,630	9,390	28.0%	3%	5%	36.0%
Hubbard	6,729	20,943	32.1%	3%	5%	40.1%
Isanti	8,946	35,605	25.1%	2%	5%	32.1%
Itasca	18,831	45,517	41.4%	3%	5%	49.4%
Jackson	3,038	8,303	36.6%	3%	5%	44.6%
Kanabec	1,305	12,091	10.8%	1%	5%	16.8%
Kandiyohi	7,402	38,918	19.0%	1%	5%	25.0%
Kittson	613	2,573	23.8%	3%	5%	31.8%
Koochiching	3,399	12,658	26.9%	4%	3%	33.5%
Lac Qui Parle	1,237	5,924	20.9%	3%	5%	28.9%
Lake	2,413	9,199	26.2%	3%	5%	34.2%
Lake of the Woods	1,351	3,994	33.8%	1%	3%	37.8%
Le Sueur	11,139	31,387	35.5%	2%	5%	42.5%
Lincoln	706	4,019	17.6%	3%	5%	25.6%
Lyon	8,099	28,039	28.9%	3%	5%	36.9%
Mahnomen	577	2,541	22.7%	3%	5%	30.7%
Marshall	786	6,577	12.0%	2%	5%	19.0%
Martin	23,068	35,475	65.0%	3%	5%	73.0%
McLeod	9,959	42,148	23.6%	3%	5%	31.6%
Meeker	3,466	13,857	25.0%	3%	5%	33.0%

## County SCORE Survey Responses

### Recycling rate

County	Tons collected for recycling	Total MSW generated	MSW collected for recycling	Source reduction credit	Yard waste credit	Recycling rate with credits
Mille Lacs	1,949	14,831	13.1%	1%	5%	19.1%
Morrison	9,885	34,019	29.1%	3%	5%	37.1%
Mower	24,556	55,087	44.6%	3%	5%	52.6%
Murray	2,437	6,828	35.7%	3%	5%	43.7%
Nicollet	16,293	34,326	47.5%	2%	5%	54.5%
Nobles	6,559	18,471	35.5%	3%	5%	43.5%
Norman	1,122	4,535	24.7%	1%	5%	30.7%
Olmsted	57,139	150,247	38.0%	3%	5%	46.0%
Otter Tail	28,664	63,311	45.3%	3%	5%	53.3%
Pennington	2,283	17,844	12.8%	3%	5%	20.8%
Pine	5,539	25,236	21.9%	3%	5%	29.9%
Pipestone	4,054	10,552	38.4%	3%	5%	46.4%
Polk	11,853	30,010	39.5%	3%	5%	47.5%
Pope/Douglas	18,782	50,177	37.4%	3%	5%	45.4%
Ramsey	286,601	722,276	39.7%	3%	5%	47.7%
Red Lake	746	2,237	33.4%	3%	5%	41.4%
Redwood	16,194	26,464	61.2%	3%	5%	69.2%
Renville	3,023	14,203	21.3%	3%	3%	27.3%
Rice	38,577	82,017	47.0%	3%	5%	55.0%
Rock	3,618	8,287	43.7%	3%	5%	51.7%
Roseau	8,555	20,437	41.9%	3%	5%	49.4%
Scott	63,331	131,811	48.0%	3%	5%	56.0%
Sherburne	26,495	83,541	31.7%	3%	5%	39.7%
Sibley	4,627	12,042	38.4%	2%	5%	45.4%
St. Louis	52,619	108,186	48.6%	3%	5%	56.6%
Stearns	87,472	166,485	52.5%	3%	5%	60.5%
Steele	34,568	68,471	50.5%	2%	5%	57.5%
Stevens	1,522	7,341	20.7%	3%	5%	28.7%
Swift	2,100	7,915	26.5%	3%	5%	34.5%
Todd	17,384	31,098	55.9%	2%	5%	62.9%
Traverse	425	2,019	21.0%	3%	5%	29.0%
Wabasha	10,193	18,323	55.6%	3%	5%	63.6%
Wadena	6,122	14,674	41.7%	2%	5%	48.7%
Waseca	37,629	48,930	76.9%	2%	5%	83.9%
Washington	86,687	193,528	44.8%	3%	5%	52.8%
Watsonwan	2,853	10,583	27.0%	0%	5%	32.0%
Wilkin	1,108	4,281	25.9%	3%	5%	33.9%
Winona	20,619	56,605	36.4%	3%	5%	44.4%
WLSSD	51,820	126,113	41.1%	3%	5%	49.1%
Wright	15,664	66,545	23.5%	3%	5%	31.5%
Yellow Medicine	1,382	7,172	19.3%	3%	5%	27.3%
Metro Area	1,400,226	3,450,518	40.6%	3.0%	5.0%	48.6%
Greater Minn.	1,021,539	2,528,682	40.4%	2.5%	4.9%	47.8%
Minnesota	2,421,765	5,979,200	40.5%	2.6%	4.9%	48.0%