



# Minnesota Pollution Control Agency

520 Lafayette Road  
St. Paul, MN 55155-4194

# Lake Cokato, Wright County

National Lake Assessment Project (NLAP)

Sample Date: August 20, 2007

**Minnesota Lake ID:** 86-0263

**Area:** 543 acres

**Watershed Area:** 29,745 acres

**Ecoregion:** North Central Hardwoods Forests (NCHF)

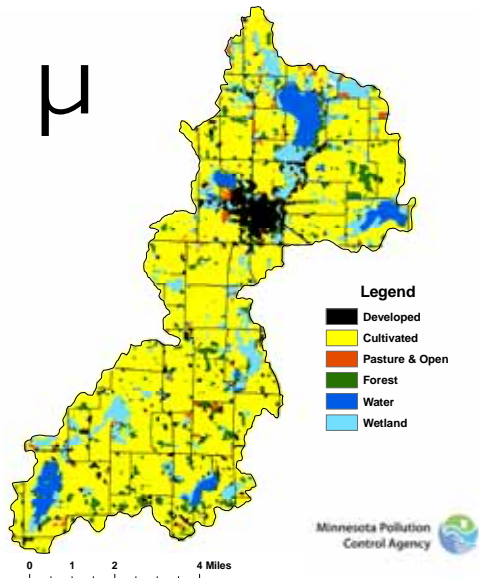
**NLAP ID:** 0551

**Maximum Depth:** 52 ft

**Mean Depth:** 35 ft



Cokato Lake Land Use



Land Use	Cokato Land Use %	CHF Typical Land Use %
Developed	9	2-9
Cultivated (Ag)	70	22-50
Pasture & Open	2	11-25
Forest	6	6-25
Water & Wetland	13	14-30
Feedlots (#)	18	

Minnesota 2000 Level 1 Landsat Landcover  
Classification.img

University of Minnesota Remote & Geospatial Analysis Lab

**Lake Cokato 2007 as compared to typical range for CHF ecoregion reference lakes. Single NLAP visit based on U.S. Environmental Protection Agency protocol as compared to typical range for summer-means. Data from Minnesota Department of Health (MDH) laboratory.**

Parameter	Cokato (MDH)		NCHF
Number of reference lakes	1		43
Total Phosphorus (µg/L)	54		23 - 50
Chlorophyll mean (µg/L)	16		5 - 22
Secchi Disk (feet)	5.9		4.9 - 10.5
(meters)	1.8		(1.5 - 3.2)
Total Kjeldahl Nitrogen (mg/L)	1.2		< 0.60 - 1.2
Alkalinity (mg/L)	170		75 - 150
Color (Pt-Co U)	20		10 - 20
pH (SU)	8.4		8.6 - 8.8
Chloride (mg/L)	27		4 - 10
Total Suspended Solids (mg/L)	5		2 - 6
Total Suspended Inorganic Solids (mg/L)	2		1 - 2
Conductivity (umhos/cm)	366		300 - 400
TN:TP ratio	22:1		25:1 - 35:1
Microcystin(µg/L)	Near Shore	Index Site	<10 Low Risk
WHO risk Category*	1.5	1	10-20 Moderate Risk
			20- 200 High Risk

\* Guidelines for safe recreational water environments (World Health Organization, 2003)

µg/L = micrograms per liter  
 mg/L = milligrams per liter  
 umhos/cm = micromhos per centimeter

Pt-Co-U = Platinum Cobalt Units  
 SU = Standard Units

**Mixing Status: thermally stratified (dimictic)**

